



Athens-Chilesburg Elementary

Policy Name: **School Space**

Related KRS and/or FCPS Board Policy:

KRS 160.345(2)(i)5

**Purpose**

The principal shall present to the Council for approval, a plan for the use of school space during the school day, by the August council meeting of each year. Assignment of school space shall be made based upon criteria that considers class size, program space need, accessibility for the disabled, and supervision of students, safety, and overall effective school management.

When necessary to alter classroom space, the principal may make those decisions to respond to unanticipated enrollment or staffing changes; when the principal and affected teachers agree that a change is needed; or if the council changes other policies and the change needs to take place before the next school year.

The Principal shall make changes as needed, with consultation to the council.

**Policy Evaluation**

We will evaluate the effectiveness of this policy through our School Improvement Planning Process.

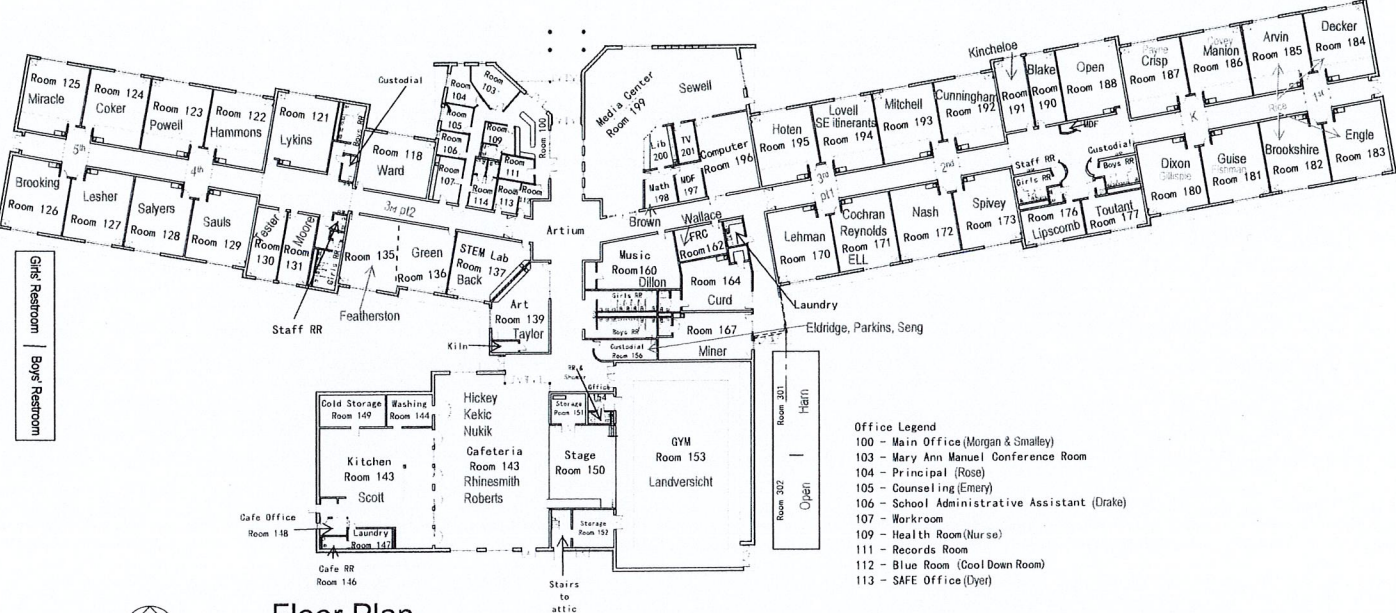
Date Adopted: \_\_\_\_\_

Date Reviewed or Revised: \_\_\_\_\_ Council Chairperson's Initials: \_\_\_\_\_

Date Reviewed or Revised: \_\_\_\_\_ Council Chairperson's Initials: \_\_\_\_\_

Room 501  
Band-Kite  
Room 502  
Open  
Room 401  
Cristina-Franco  
Room 402  
Open

Girls Restroom  
Boys Restroom



- Office Legend**
- 100 - Main Office (Morgan & Smalley)
  - 103 - Mary Ann Manuel Conference Room
  - 104 - Principal (Rose)
  - 105 - Counseling (Emery)
  - 106 - School Administrative Assistant (Drake)
  - 107 - Workroom
  - 109 - Health Room (Nurse)
  - 111 - Records Room
  - 112 - Blue Room (Cool Down Room)
  - 113 - SAFE Office (Dyer)

**Floor Plan**  
Scale: 1" = 40'-0"

