



Update on FCPS Construction/Renovation Projects

May 2017



Frederick Douglass High School

- ▶ Architect: Tate Hill Jacobs:Architects
- ▶ General Contractor: D.W.Wilburn, Inc.
- ▶ GC Contract Sum: \$62,044,000
- ▶ Total Project Cost: \$81,511,696
- ▶ Change Orders to Date (20): \$808,653.90
- ▶ Scheduled Contract Completion Date: July 2017
- ▶ % of Contract Completed: 89.98%
- ▶ Revised Completion Date per GC: No Change

Frederick Douglass High School

Schematic Rendering of Final Façade



Frederick Douglass High School

▶ **Work Completed to Date:**

- ▶ Sod installation and final grading have continued. Water quality control box work began. Permeable paver installation began. Perimeter fencing began at the athletic fields and the irrigation meter was set. Concrete polishing is nearly complete at the social stair. Masonry touch-ups, patching, and sill replacement have continued.
- ▶ Roofing trim and cap sheet installation has continued. Doors are nearly complete in Area A. Interior window glazing has continued.
- ▶ Gypsum board touch-ups have continued. Ceiling tile installation was completed in Area D. The wood ceiling is nearly complete at the south entry canopy.
- ▶ Terrazzo prep work has begun in the cafeteria. Rubber flooring installation continued in Area D. Finish painting was completed in Area B and moved to Area E4. The bleacher installation is at 80% complete and the lockers are at 95% complete. Division 10 (Specialties) work has continued.
- ▶ Plumbing fixture installation has continued in the academic building and at the Fieldhouse. HVAC grilles and rough-ins continued. Testing and balancing has continued. Light fixtures & controls continued. Voice/data, fire alarm, & security cabling installation continued. Wiring devices are 99% installed. Electrical work began at the ticket booths and press box.

Frederick Douglass High School

▶ **Current Work Effort (May):**

- ▶ Sod and permeable paver installation will be completed. Fire lane work will begin. Water quality control boxes will be completed. Irrigation and fencing will continue at the athletic fields. Final track material will begin. Site concrete should be completed. Concrete polishing work will continue. Masonry touch-ups, patching, and sill replacement will continue.
- ▶ Roofing trim and cap sheet and the north entrance canopy will nearly be completed. Door installation will move to Area D. Interior window glazing will continue.
- ▶ Gypsum board should be completed throughout. Ceilings will be completed with the exception of the wood ceiling at the north entry canopy.
- ▶ Terrazzo will begin in the cafeteria and the terrazzo logos/graphics will also begin. Rubber flooring will be completed and rubber floor base will continue. Finish painting will be completed in Area E4 and move to Area A. Division 10 (Specialties) work will continue. Bleachers and lockers will be completed. Work in the Health Sciences room will begin.
- ▶ HVAC rough-ins and GRD's should be completed. Plumbing fixture installation will near completion at the Fieldhouse. Health Sciences plumbing and HVAC will be nearly completed. Testing and balancing will continue. Electrical plates will be installed after finish painting is complete in each area. Wattstopper will check controls. Light fixture installation will continue.

Frederick Douglass High School

North Entry – Permeable Pavers



North Lobby



South Entry Canopy



Auxiliary Gym

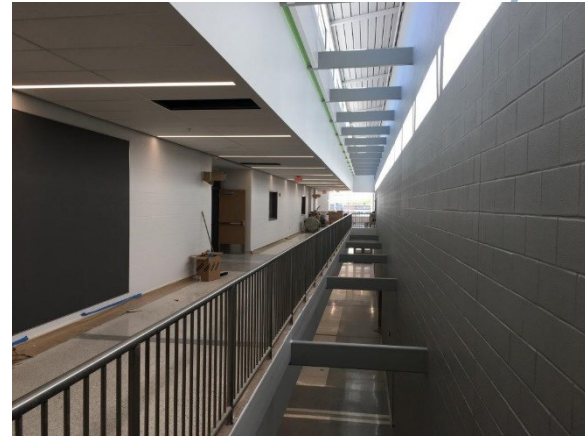


Frederick Douglass High School

Main Gym



North-South Clerestory



Café Patio & Entry



South Façade

