

Mary Todd Elementary -- Renovation

- ▶ Architect: Murphy + Graves Architects
- ▶ General Contractor: Alliance Corporation
- ▶ Substantial Completion Date: December 2012
- ▶ GC Contract Sum: \$8,678,503
- ▶ Total Project Cost: \$10,910,625
- ▶ Change Orders to Date (I): \$43,781
- ▶ Current Phase: I
- ▶ Estimated Completion: 34%



Mary Todd Elementary -- Renovation

Rendering of Final Façade



Mary Todd Elementary School: Entry Perspective

December 2011

Mary Todd Elementary -- Renovation

▶ **Work Completed to Date:**

- ▶ Painting has begun in Phase I classrooms.
- ▶ Gym masonry repair work continues.
- ▶ Painting and finish work continues in the new Administrative Suite.
- ▶ Phase I Corridor construction was completed.

▶ **Current Work Effort (December):**

- ▶ Media Center steel erection and masonry work continues.
- ▶ Contractor to begin work on Entry Vestibule and Lobby structural framing.
- ▶ Roof work will continue.
- ▶ Murphy + Graves to hold second “Renovation 101” session with the students of Mary Todd Elementary.



Mary Todd Elementary -- Renovation

Painting has Begun



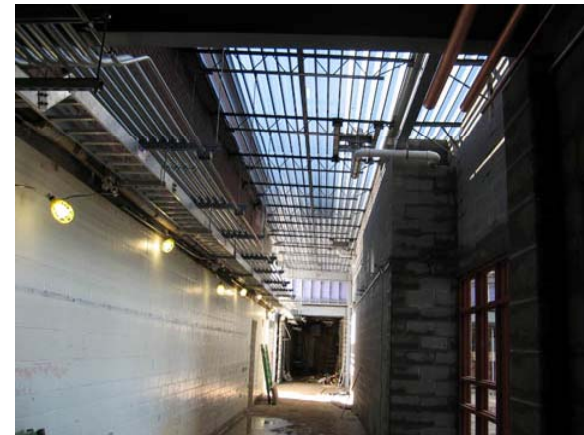
Gym Repair



Admin. Suite



Corridor



Mary Todd Elementary -- Renovation

Media Center



Lobby - Structural Framing



Roof Work



Renovation 101 Session

