



2010-2011
INTERIM PERFORMANCE REPORT

School: Lansdowne Elementary School
 District: Fayette County
 Code: 165062
 Grade: 00 - 05

In March 2009, the Kentucky General Assembly passed Senate Bill 1 (SB1) that was subsequently signed into law by the Governor. SB1 called for a significant overhaul of the state's assessment and accountability system. The school years of 2008-2009, 2009-2010 and 2010-2011 are described in SB1 as an interim period. This three-year period allowed Kentucky time to develop the new assessment and accountability system and to carry on state and federal testing requirements.

The 2010-2011 Interim Performance Report (IPR) is the final reporting of the Kentucky Core Content Test (KCCT) and completes the interim period. The new state assessment and accountability system begins in school year 2011-2012.

The IPR includes the KCCT in Reading (grades 3-8 and 10), Mathematics (grades 3-8 and 11), Science (grades 4, 7 and 11), Social Studies (grades 5, 8 and 11) and Writing On-Demand (grades 5, 8 and 12). The KCCT is based on the Kentucky Core Content for Assessment (Version 4.1) and contains multiple-choice and open-response questions. The Writing On-Demand test uses writing prompts that require students to craft a piece of writing in a 60 minute period.

The KCCT continues to fulfill the requirements of the federal statute known as the No Child Left Behind Act of 2001. A separate accountability report for No Child Left Behind (NCLB) is published by the Kentucky Department of Education.

The IPR focuses entirely on the five state-required content areas and provides data for schools or districts. The data in this report is not used for state accountability; although, these results may be used by schools or districts for their own accountability needs.

Performance standards are based on descriptions of Novice, Apprentice, Proficient and Distinguished (NAPD) student performance levels specific to the content area and grade being assessed. The performance standards, in conjunction with Kentucky's Core Content for Assessment, should allow instruction to better focus on the content area to be taught and on how well students must demonstrate achievement in each content area.

Report Format

The IPR includes three pages for each content area by grade level. The three pages are performance level (NAPD) trend, core content and disaggregation data. It displays distributions of how students scored in the Novice (with sublevels), Apprentice (with sublevels), Proficient and Distinguished performance levels.

Confidentiality Changes

Due to federal regulations around the Family Education Rights and Privacy Act (FERPA), the numbers of students have been removed. Though there is a need to report as much data as possible, there is also a paramount need to maintain the confidential aspects of individual scores. When scores are reported in what is commonly called "small cells" where very few students may be categorized, there is the possibility of revealing individual scores when numbers are reported. Numbers are reported to each district in a confidential report that accompanies the public Interim Performance Report.

CONTENTS OF THIS REPORT

	Elementary
Academic Trend Data	
Reading Results	2- 8
Mathematics Results	9- 15
Science Results	16- 18
Social Studies Results	19- 21
Writing Results	22- 24

For more information, refer to the 2011 Interim Performance Report Interpretive Guide on the Kentucky Department of Education Web site (www.education.ky.gov).

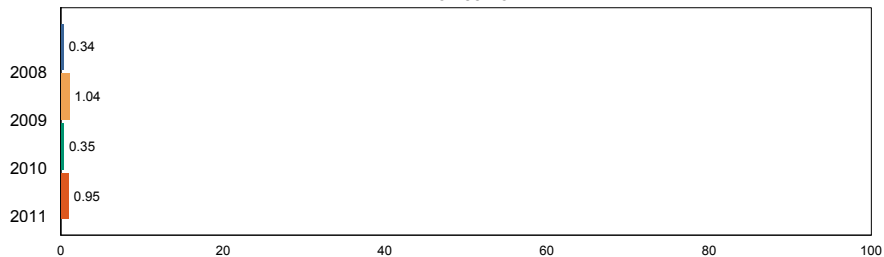




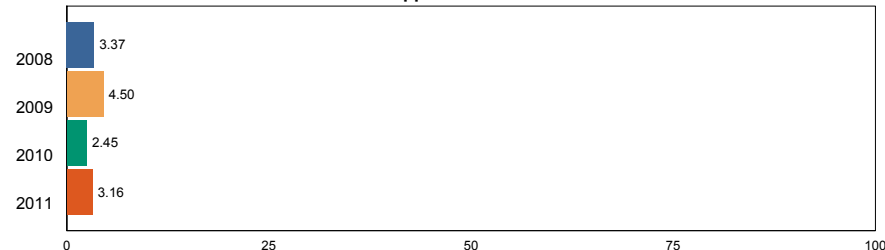
**2010-2011
INTERIM PERFORMANCE REPORT
READING TREND DATA
Performance Level Percents**

School: Lansdowne Elementary School
 District: Fayette County
 Code: 165062
 Grade: Elementary

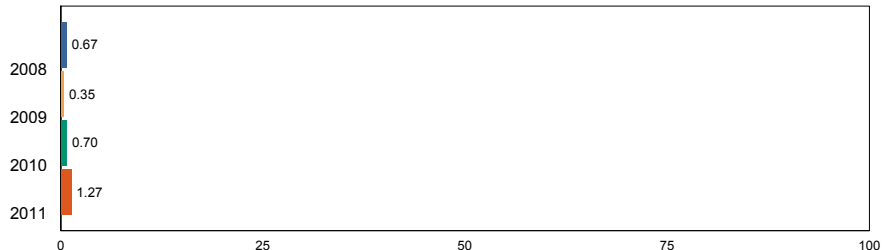
Novice Low



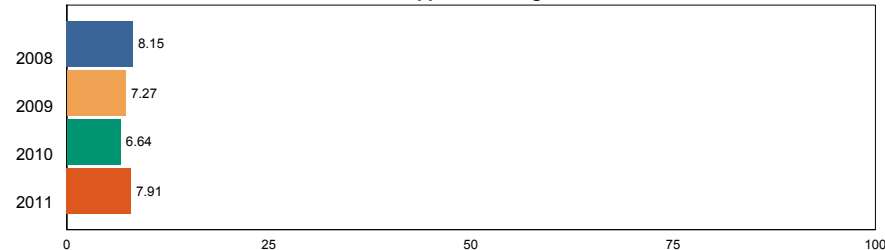
Apprentice - Medium



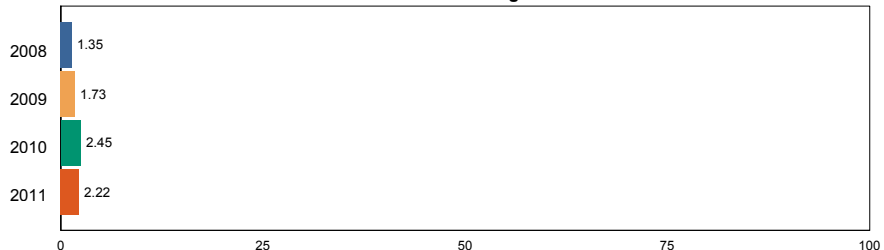
Novice - Medium



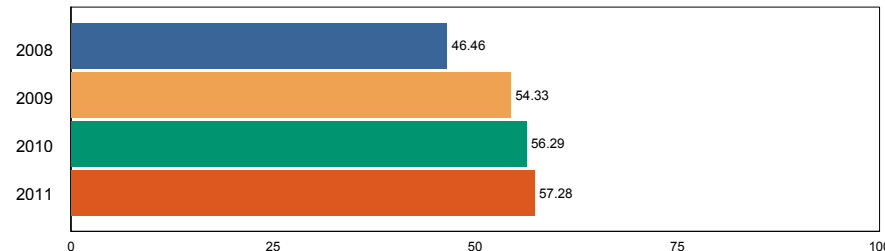
Apprentice - High



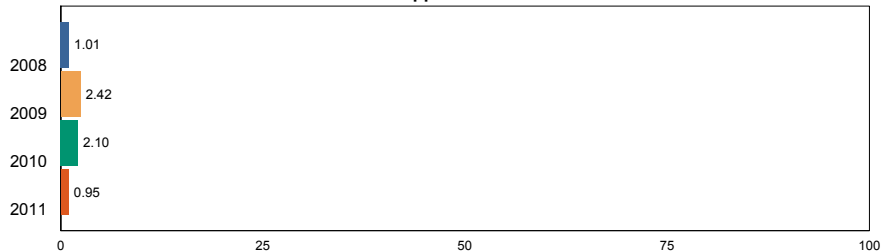
Novice - High



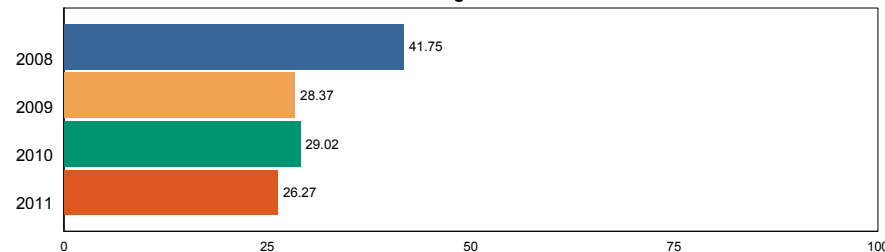
Proficient



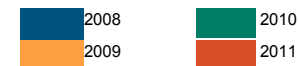
Apprentice - Low



Distinguished



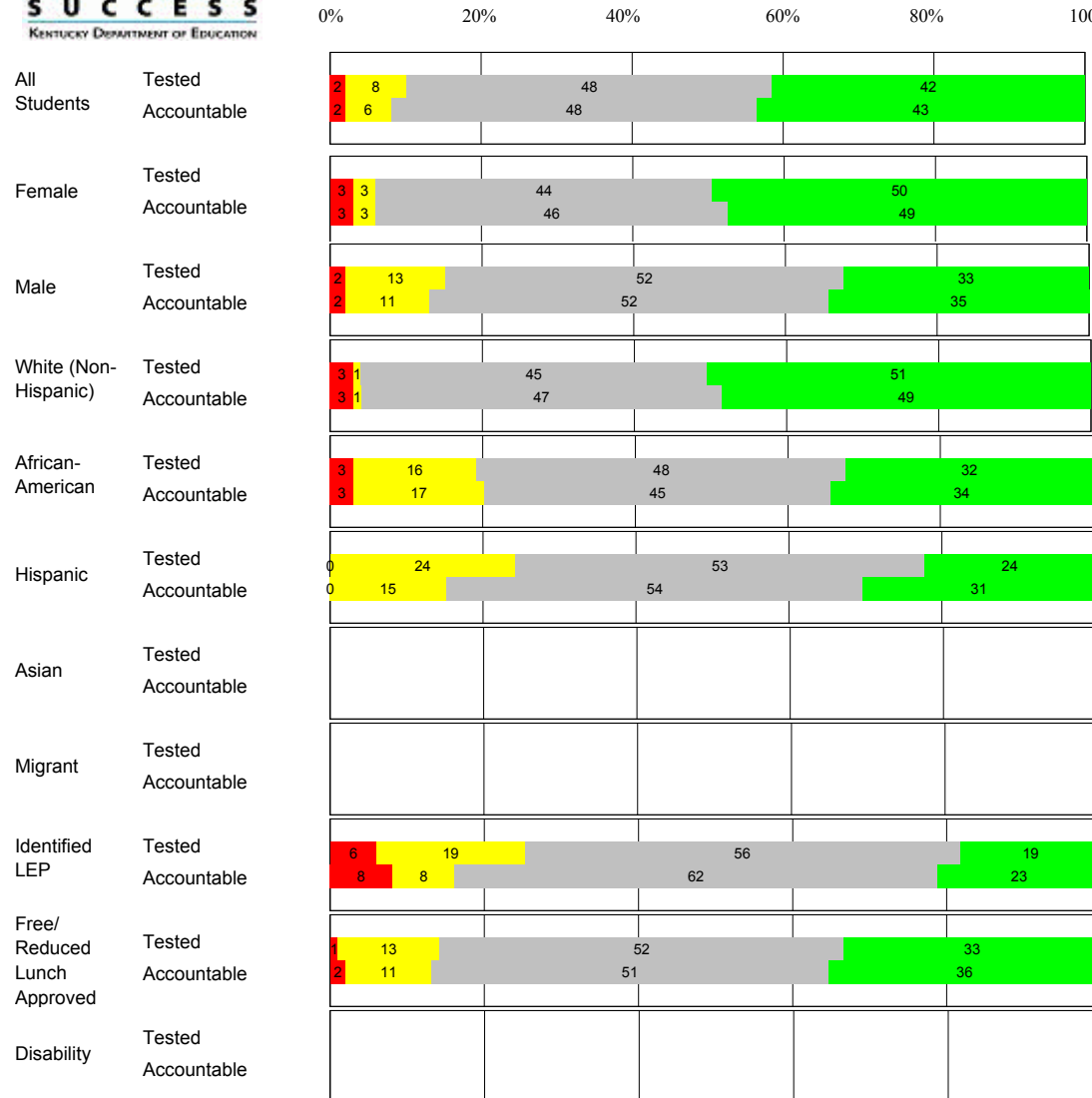
The horizontal bar represents the percent of students scoring at a performance level within a particular year. Percentages may not sum to 100% due to rounding.





**2010-2011
INTERIM PERFORMANCE REPORT
READING DISAGGREGATION
Performance Level Percents**

School: Lansdowne Elementary School
 District: Fayette County
 Code: 165062
 Grade: 03



Tested Students	N%	A%	P%	D%	P+D%
Total	2	8	48	42	90.23
Female	3	3	44	50	94.44
Male	2	13	52	33	85.25
White (Non-Hispanic)	3	1	45	51	96.10
African-American	3	16	48	32	80.65
Hispanic	0	24	53	24	76.47
Asian	***				
Other	***				
Title I	2	8	48	42	90.23
Migrant					
Identified LEP	6	19	56	19	75.00
Extended Sch Services	5	11	79	5	84.21
Gifted/Talented	0	0	11	89	100.00
F/R Lunch Approved	1	13	52	33	85.51
Vocational/2 Credits					
Disability (KCCT)	***				
With Accomodations	***				
Alternate Assessment					

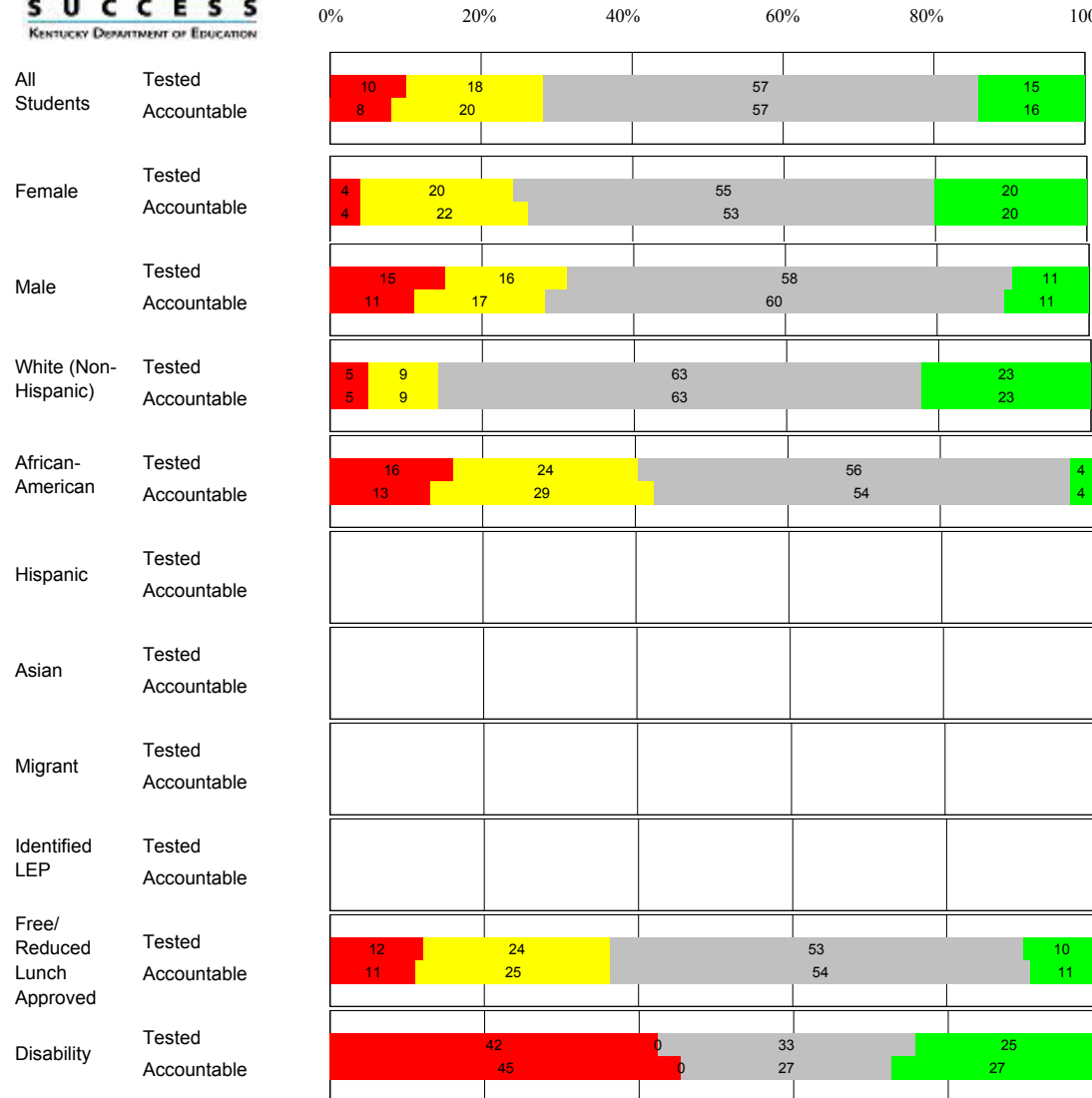
NCLB Accountable Students					
Total	2	6	48	43	91.13
Female	3	3	46	49	94.29
Male	2	11	52	35	87.04
White (Non-Hispanic)	3	1	47	49	96.00
African-American	3	17	45	34	79.31
Hispanic	0	15	54	31	84.62
Asian	***				
Other	***				
Title I	2	6	48	43	91.13
Migrant					
Identified LEP	8	8	62	23	84.62
Extended Sch Services	5	11	79	5	84.21
Gifted/Talented	0	0	12	88	100.00
F/R Lunch Approved	2	11	51	36	86.89
Vocational/2 Credits					
Disability (KCCT)	***				
With Accomodations	***				
Alternate Assessment					

Percentages may not sum to 100% due to rounding. "****" indicates unreportable populations with fewer than 10 students or populations where all students score at the same performance level.



**2010-2011
INTERIM PERFORMANCE REPORT
READING DISAGGREGATION
Performance Level Percents**

School: Lansdowne Elementary School
 District: Fayette County
 Code: 165062
 Grade: 04



Tested Students	N%	A%	P%	D%	P+D%
Total	10	18	57	15	72.12
Female	4	20	55	20	75.51
Male	15	16	58	11	69.09
White (Non-Hispanic)	5	9	63	23	85.94
African-American	16	24	56	4	60.00
Hispanic	***				
Asian	***				
Other	***				
Title I	10	18	57	15	72.12
Migrant					
Identified LEP	***				
Extended Sch Services	19	56	25	0	25.00
Gifted/Talented	0	0	54	46	100.00
F/R Lunch Approved	12	24	53	10	63.79
Vocational/2 Credits					
Disability (KCCT)	42	0	33	25	58.33
With Accomodations	50	0	30	20	50.00
Alternate Assessment	***				

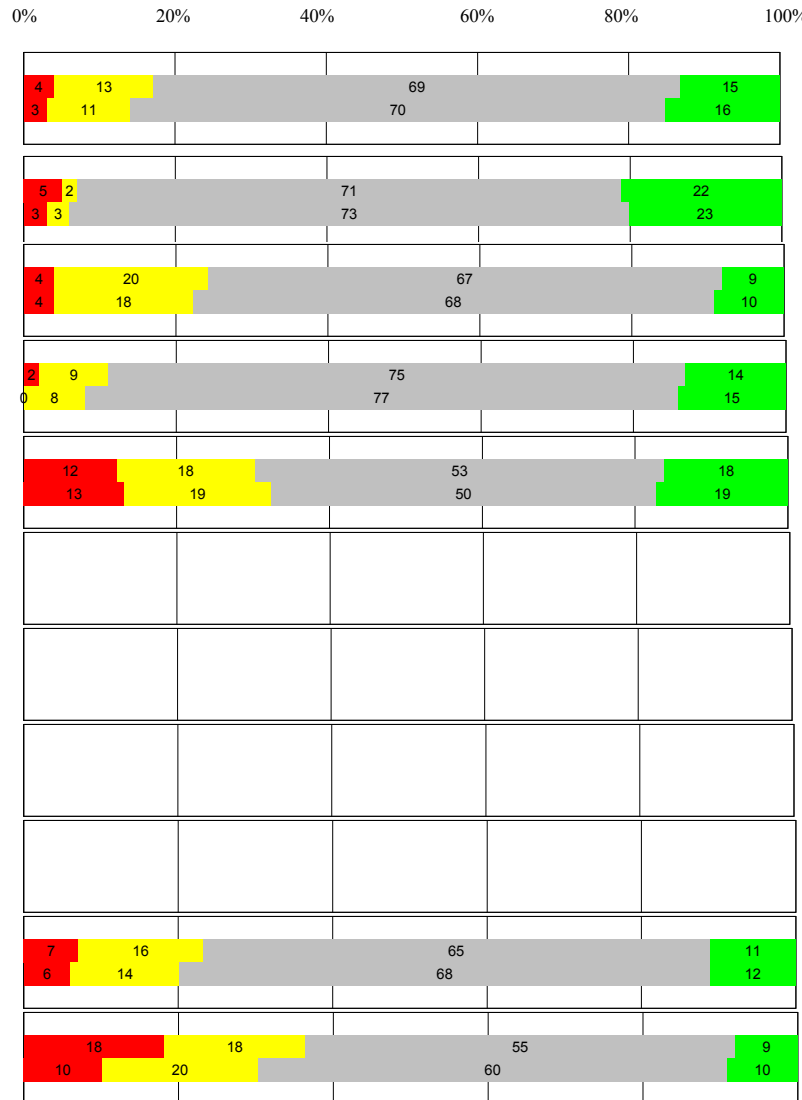
NCLB Accountable Students					
Tested Students	N%	A%	P%	D%	P+D%
Total	8	20	57	16	72.55
Female	4	22	53	20	73.47
Male	11	17	60	11	71.70
White (Non-Hispanic)	5	9	63	23	86.15
African-American	13	29	54	4	58.33
Hispanic	***				
Asian	***				
Other	***				
Title I	8	20	57	16	72.55
Migrant					
Identified LEP	***				
Extended Sch Services	19	56	25	0	25.00
Gifted/Talented	0	0	54	46	100.00
F/R Lunch Approved	11	25	54	11	64.29
Vocational/2 Credits					
Disability (KCCT)	45	0	27	27	54.55
With Accomodations	50	0	30	20	50.00
Alternate Assessment	***				

Percentages may not sum to 100% due to rounding. "****" indicates unreportable populations with fewer than 10 students or populations where all students score at the same performance level.



**2010-2011
INTERIM PERFORMANCE REPORT
READING DISAGGREGATION
Performance Level Percents**

School: Lansdowne Elementary School
 District: Fayette County
 Code: 165062
 Grade: 05



Tested Students	N%	A%	P%	D%	P+D%
Total	4	13	69	15	83.33
Female	5	2	71	22	92.68
Male	4	20	67	9	76.36
White (Non-Hispanic)	2	9	75	14	89.23
African-American	12	18	53	18	70.59
Hispanic	***				
Asian	***				
Other	***				
Title I	4	13	69	15	83.33
Migrant					
Identified LEP	***				
Extended Sch Services	11	16	74	0	73.68
Gifted/Talented	0	0	45	55	100.00
F/R Lunch Approved	7	16	65	11	76.36
Vocational/2 Credits					
Disability (KCCT)	18	18	55	9	63.64
With Accomodations	18	18	55	9	63.64
Alternate Assessment					

NCLB Accountable Students					
Total	3	11	70	16	85.56
Female	3	3	73	23	95.00
Male	4	18	68	10	78.00
White (Non-Hispanic)	0	8	77	15	91.80
African-American	13	19	50	19	68.75
Hispanic	***				
Asian	***				
Other	***				
Title I	3	11	70	16	85.56
Migrant					
Identified LEP	***				
Extended Sch Services	11	16	74	0	73.68
Gifted/Talented	0	0	45	55	100.00
F/R Lunch Approved	6	14	68	12	80.00
Vocational/2 Credits					
Disability (KCCT)	10	20	60	10	70.00
With Accomodations	10	20	60	10	70.00
Alternate Assessment					

Percentages may not sum to 100% due to rounding. "****" indicates unreportable populations with fewer than 10 students or populations where all students score at the same performance level.



**2010-2011
INTERIM PERFORMANCE REPORT
READING CORE CONTENT**

Run Date: 9/15/2011

Page 6

School: Lansdowne Elementary School
 District: Fayette County
 Code: 165062
 Grade: 03

		SCHOOL										STATE									
				Percents										Percents						School -State	
OPEN RESPONSE		No. Items	No. Observations	B	0	1	2	3	4	Mean	Std. Err.	No. Observations	B	0	1	2	3	4	Mean	Mean	
02 .x.x	Developing Understanding	2	248	0	1	16	49	29	5	2.2	0.1	98,508	0	6	23	54	15	2	1.8	0.4	
03 .x.x	Interpreting Text	2	248	0	1	16	49	29	5	2.2	0.1	98,508	0	6	23	54	15	2	1.8	0.4	
MULTIPLE CHOICE				Correct	Incorrect	Omit/Mult						Correct	Incorrect	Omit/Mult							
01 .x.x	Forming a Foundation	32	970	89	11	0		0.89	0.01	385,968	84	16	0		0.84	0.05					
02 .x.x	Developing Understanding	91	2,497	86	14	0		0.86	0.01	992,760	81	19	0		0.81	0.05					
03 .x.x	Interpreting Text	29	1,116	85	15	0		0.84	0.01	444,036	78	22	0		0.78	0.06					
05 .x.x	Critical Stance	15	528	84	16	0		0.84	0.02	204,795	80	20	0		0.80	0.04					

Percentages may not sum to 100% due to rounding. "****" indicates unreportable populations with fewer than 10 students or populations where all students score at the same performance level.



**2010-2011
INTERIM PERFORMANCE REPORT
READING CORE CONTENT**

Run Date: 9/15/2011

Page 7

School: Lansdowne Elementary School
 District: Fayette County
 Code: 165062
 Grade: 04

		SCHOOL										STATE									
				Percents										Percents						School -State	
OPEN RESPONSE		No. Items	No. Observations	B	0	1	2	3	4	Mean	Std. Err.	No. Observations	B	0	1	2	3	4	Mean	Mean	
02	.x.x	Developing Understanding	5	166	0	4	17	55	23	1	2.0	0.1	84,195	0	3	25	56	15	2	1.9	0.1
03	.x.x	Interpreting Text	6	271	0	6	21	46	24	2	2.0	0.1	134,963	0	4	25	51	17	3	1.9	0.1
MULTIPLE CHOICE				Correct	Incorrect	Omit/Mult				Correct	Incorrect	Omit/Mult				Correct	Incorrect	Omit/Mult			
01	.x.x	Forming a Foundation	34	839	75	25	0		0.75	0.02	413,200	73	27	0		0.73	0.02			0.73	0.02
02	.x.x	Developing Understanding	76	1,785	71	29	0		0.71	0.01	893,075	73	27	0		0.73	-0.02			0.73	-0.02
03	.x.x	Interpreting Text	29	556	79	21	0		0.79	0.02	286,784	79	21	0		0.79	0.00			0.79	0.00
05	.x.x	Critical Stance	9	313	71	29	0		0.71	0.02	160,150	74	26	0		0.74	-0.03			0.74	-0.03

Percentages may not sum to 100% due to rounding. "****" indicates unreportable populations with fewer than 10 students or populations where all students score at the same performance level.



**2010-2011
INTERIM PERFORMANCE REPORT
READING CORE CONTENT**

Run Date: 9/15/2011

Page 8

School: Lansdowne Elementary School
 District: Fayette County
 Code: 165062
 Grade: 05

		SCHOOL										STATE									
				Percents										Percents						School -State	
OPEN RESPONSE		No. Items	No. Observations	B	0	1	2	3	4	Mean	Std. Err.	No. Observations	B	0	1	2	3	4	Mean	Mean	
02	.x.x	Developing Understanding	6	165	0	4	10	51	27	8	2.2	0.1	91,909	0	4	20	48	23	5	2.1	0.1
03	.x.x	Interpreting Text	6	242	0	3	10	61	21	5	2.2	0.1	133,739	0	4	17	50	23	6	2.1	0.1
MULTIPLE CHOICE				Correct	Incorrect	Omit/Mult						Correct	Incorrect	Omit/Mult							
01	.x.x	Forming a Foundation	28	496	77		23	0		0.77	0.02	275,462	75	25		0			0.75	0.02	
02	.x.x	Developing Understanding	71	1,514	81		19	0		0.81	0.01	844,337	80	20		0			0.80	0.01	
03	.x.x	Interpreting Text	27	629	85		15	0		0.85	0.02	350,861	82	18		0			0.82	0.03	
05	.x.x	Critical Stance	17	555	83		17	0		0.83	0.02	308,849	77	23		0			0.77	0.06	

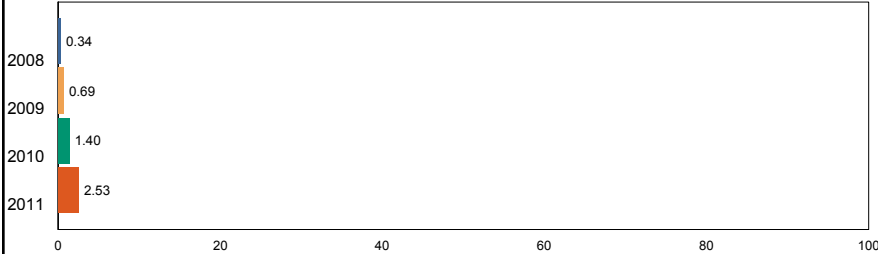
Percentages may not sum to 100% due to rounding. "****" indicates unreportable populations with fewer than 10 students or populations where all students score at the same performance level.



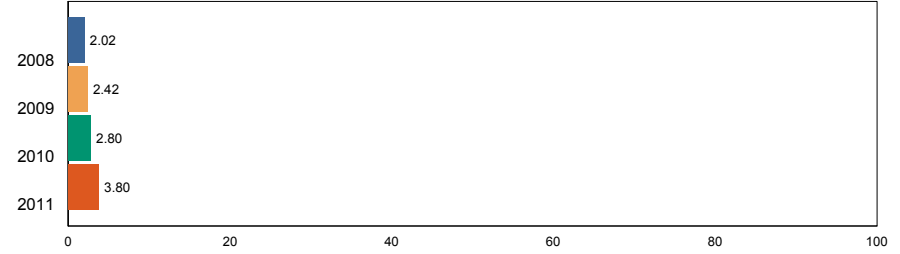
**2010-2011
INTERIM PERFORMANCE REPORT
MATHEMATICS TREND DATA
Performance Level Percents**

School: Lansdowne Elementary School
 District: Fayette County
 Code: 165062
 Grade: Elementary

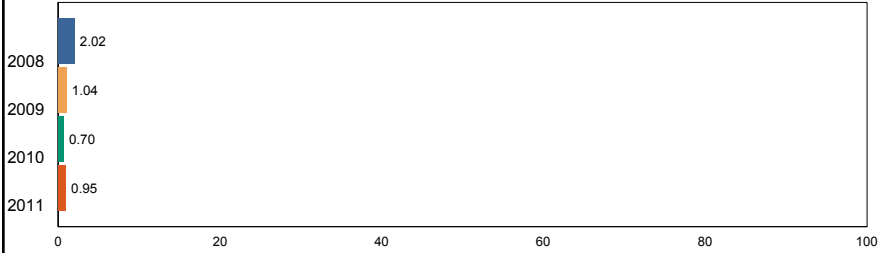
Novice - Low



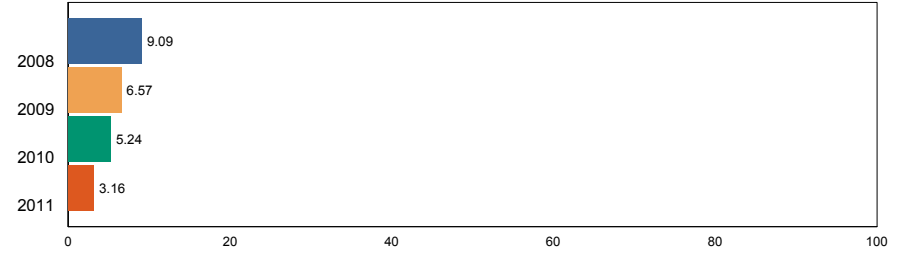
Apprentice - Medium



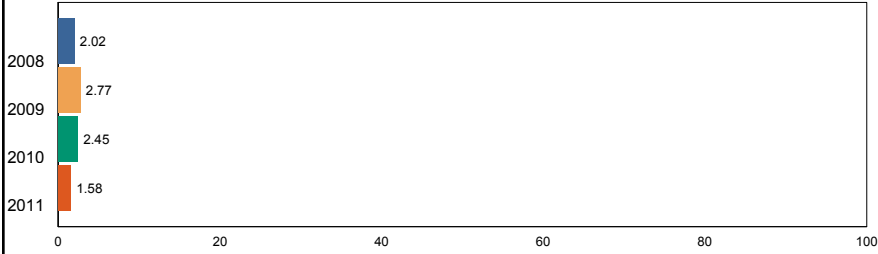
Novice - Medium



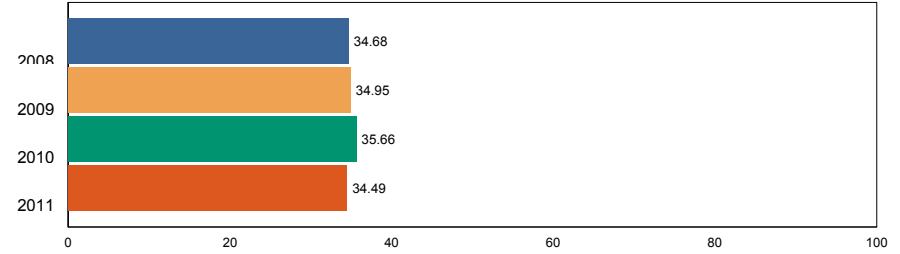
Apprentice - High



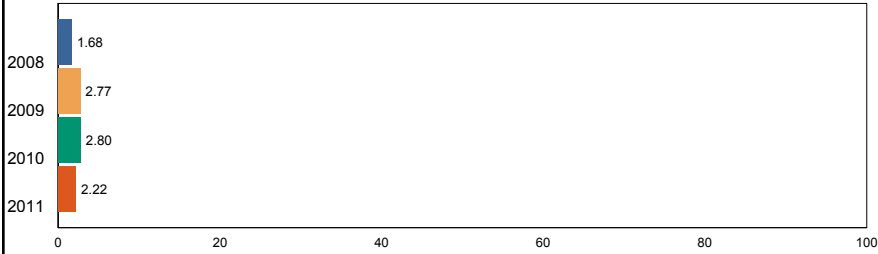
Novice - High



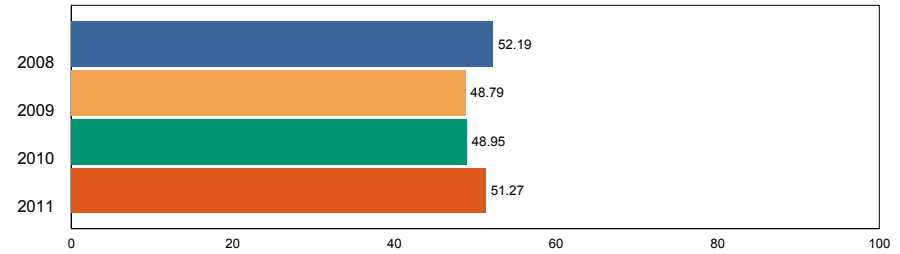
Proficient



Apprentice - Low



Distinguished



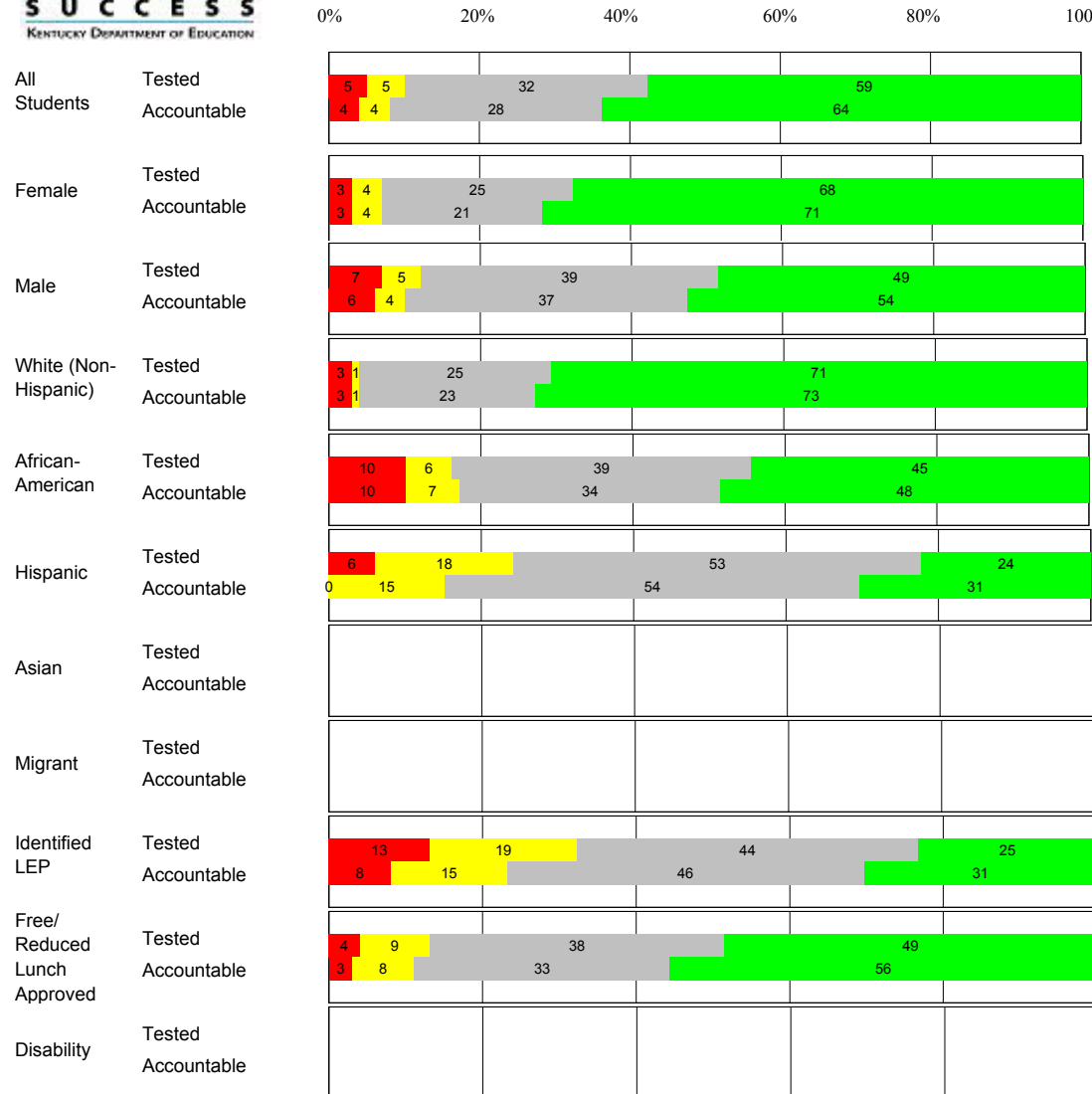
The horizontal bar represents the percent of students scoring at a performance level within a particular year. Percentages may not sum to 100% due to rounding.





**2010-2011
INTERIM PERFORMANCE REPORT
MATHEMATICS DISAGGREGATION
Performance Level Percents**

School: Lansdowne Elementary School
 District: Fayette County
 Code: 165062
 Grade: 03



Tested Students	N%	A%	P%	D%	P+D%
Total	5	5	32	59	90.98
Female	3	4	25	68	93.06
Male	7	5	39	49	88.52
White (Non-Hispanic)	3	1	25	71	96.10
African-American	10	6	39	45	83.87
Hispanic	6	18	53	24	76.47
Asian	***				
Other	***				
Title I	5	5	32	59	90.98
Migrant					
Identified LEP	13	19	44	25	68.75
Extended Sch Services	11	16	32	42	73.68
Gifted/Talented					
F/R Lunch Approved	4	9	38	49	86.96
Vocational/2 Credits					
Disability (KCCT)	***				
With Accomodations	***				
Alternate Assessment					

NCLB Accountable Students

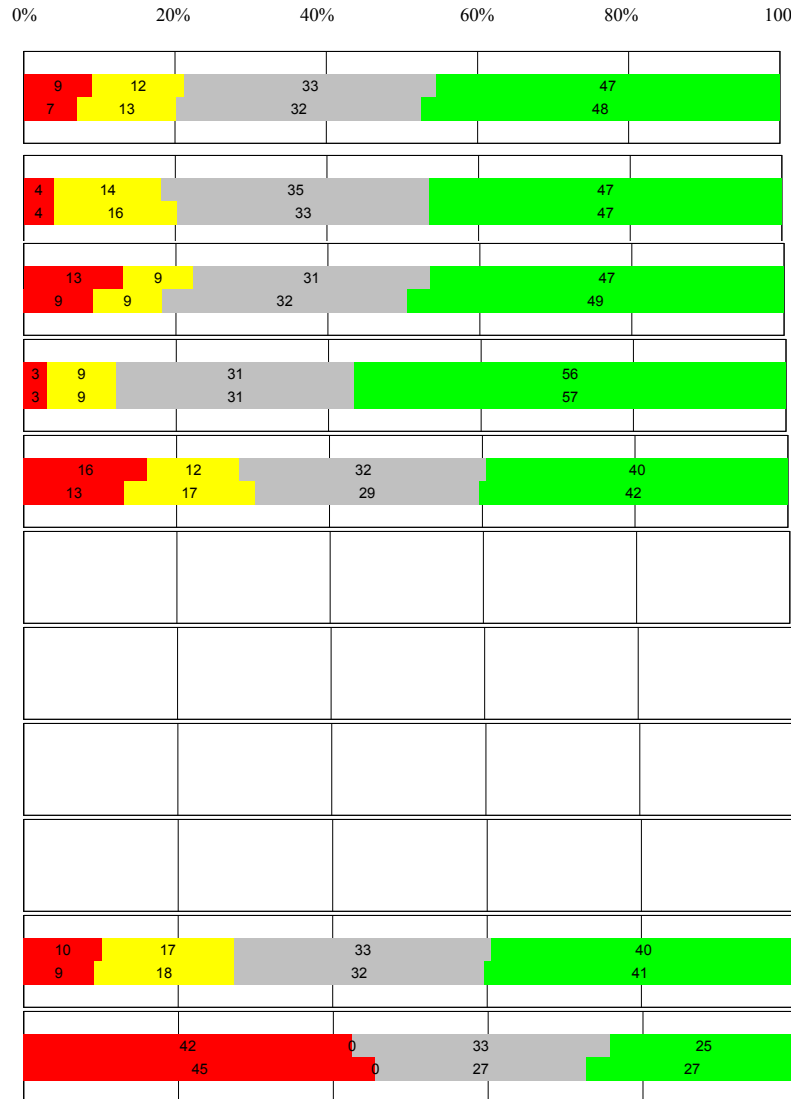
Total	4	4	28	64	91.94
Female	3	4	21	71	92.86
Male	6	4	37	54	90.74
White (Non-Hispanic)	3	1	23	73	96.00
African-American	10	7	34	48	82.76
Hispanic	0	15	54	31	84.62
Asian	***				
Other	***				
Title I	4	4	28	64	91.94
Migrant					
Identified LEP	8	15	46	31	76.92
Extended Sch Services	11	16	32	42	73.68
Gifted/Talented					
F/R Lunch Approved	3	8	33	56	88.52
Vocational/2 Credits					
Disability (KCCT)	***				
With Accomodations	***				
Alternate Assessment					

Percentages may not sum to 100% due to rounding. "****" indicates unreportable populations with fewer than 10 students or populations where all students score at the same performance level.



**2010-2011
INTERIM PERFORMANCE REPORT
MATHEMATICS DISAGGREGATION
Performance Level Percents**

School: Lansdowne Elementary School
 District: Fayette County
 Code: 165062
 Grade: 04



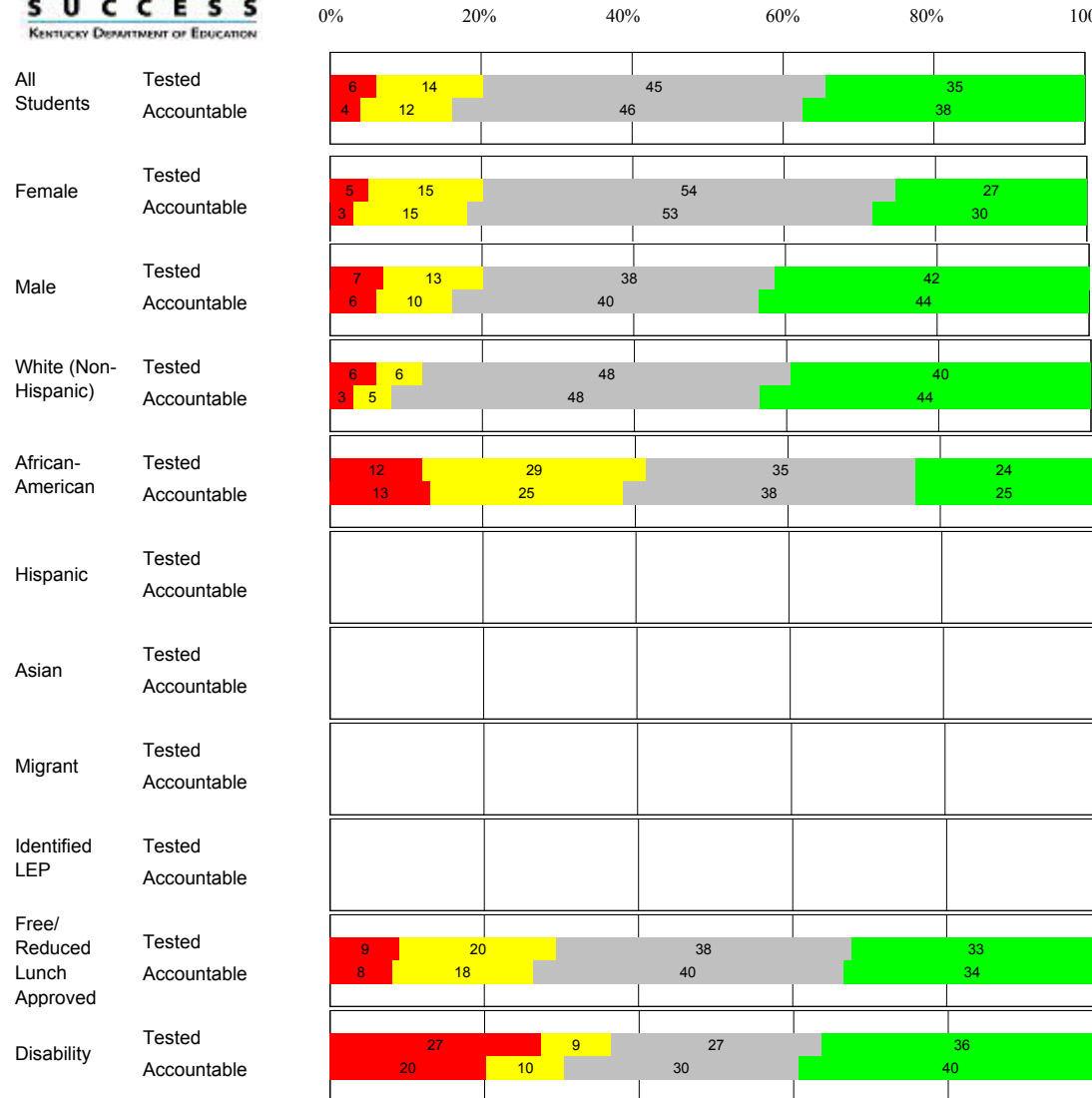
Tested Students	N%	A%	P%	D%	P+D%
Total	9	12	33	47	79.81
Female	4	14	35	47	81.63
Male	13	9	31	47	78.18
White (Non-Hispanic)	3	9	31	56	87.50
African-American	16	12	32	40	72.00
Hispanic	***				
Asian	***				
Other	***				
Title I	9	12	33	47	79.81
Migrant					
Identified LEP	***				
Extended Sch Services	13	44	38	6	43.75
Gifted/Talented	0	0	8	92	100.00
F/R Lunch Approved	10	17	33	40	72.41
Vocational/2 Credits					
Disability (KCCT)	42	0	33	25	58.33
With Accomodations	50	0	30	20	50.00
Alternate Assessment	***				
NCLB Accountable Students					
Total	7	13	32	48	80.39
Female	4	16	33	47	79.59
Male	9	9	32	49	81.13
White (Non-Hispanic)	3	9	31	57	87.69
African-American	13	17	29	42	70.83
Hispanic	***				
Asian	***				
Other	***				
Title I	7	13	32	48	80.39
Migrant					
Identified LEP	***				
Extended Sch Services	13	44	38	6	43.75
Gifted/Talented	0	0	8	92	100.00
F/R Lunch Approved	9	18	32	41	73.21
Vocational/2 Credits					
Disability KCCT	45	0	27	27	54.55
With Accomodations	50	0	30	20	50.00
Alternate Assessment	***				

Percentages may not sum to 100% due to rounding. "****" indicates unreportable populations with fewer than 10 students or populations where all students score at the same performance level.



**2010-2011
INTERIM PERFORMANCE REPORT
MATHEMATICS DISAGGREGATION
Performance Level Percents**

School: Lansdowne Elementary School
 District: Fayette County
 Code: 165062
 Grade: 05



Tested Students	N%	A%	P%	D%	P+D%
Total	6	14	45	35	80.21
Female	5	15	54	27	80.49
Male	7	13	38	42	80.00
White (Non-Hispanic)	6	6	48	40	87.69
African-American	12	29	35	24	58.82
Hispanic	***				
Asian	***				
Other	***				
Title I	6	14	45	35	80.21
Migrant					
Identified LEP	***				
Extended Sch Services	16	21	53	11	63.16
Gifted/Talented	0	0	27	73	100.00
F/R Lunch Approved	9	20	38	33	70.91
Vocational/2 Credits					
Disability (KCCT)	27	9	27	36	63.64
With Accomodations	27	9	27	36	63.64
Alternate Assessment					

NCLB Accountable Students					
Total	4	12	46	38	83.33
Female	3	15	53	30	82.50
Male	6	10	40	44	84.00
White (Non-Hispanic)	3	5	48	44	91.80
African-American	13	25	38	25	62.50
Hispanic	***				
Asian	***				
Other	***				
Title I	4	12	46	38	83.33
Migrant					
Identified LEP	***				
Extended Sch Services	16	21	53	11	63.16
Gifted/Talented	0	0	27	73	100.00
F/R Lunch Approved	8	18	40	34	74.00
Vocational/2 Credits					
Disability (KCCT)	20	10	30	40	70.00
With Accomodations	20	10	30	40	70.00
Alternate Assessment					

Percentages may not sum to 100% due to rounding. "****" indicates unreportable populations with fewer than 10 students or populations where all students score at the same performance level.



**2010-2011
INTERIM PERFORMANCE REPORT
MATHEMATICS CORE CONTENT**

Run Date: 9/15/2011

Page 13

School: Lansdowne Elementary School
 District: Fayette County
 Code: 165062
 Grade: 03

		SCHOOL										STATE									
				Percents										Percents						School -State Mean	
	OPEN RESPONSE	No. Items	No. Observations	B	0	1	2	3	4	Mean	Std. Err.	No. Observations	B	0	1	2	3	4	Mean	Mean	
01 .x.x	Number Prop Oper	5	307	1	14	26	31	19	10	1.9	0.1	123,082	0	20	33	28	10	8	1.5	0.4	
02 .x.x	Measurement	1	19	0	11	0	21	32	37	2.8	0.3	8,127	0	24	5	30	16	26	2.1	0.7	
03 .x.x	Geometry	2	44	0	0	20	41	20	18	2.4	0.2	16,552	0	7	27	33	13	21	2.1	0.3	
04 .x.x	Data Analysis & Probabilit	1	124	0	5	2	10	14	69	3.4	0.1	49,254	0	9	9	18	19	46	2.8	0.6	
05 .x.x	Algebraic Thinking	2	145	0	4	2	8	18	68	3.4	0.1	57,382	0	9	10	18	21	43	2.8	0.6	
MULTIPLE CHOICE				Correct	Incorrect	Omit/Mult						Correct	Incorrect	Omit/Mult							
01 .x.x	Number Prop Oper	32	2,008	83	17	0	0.83	0.01			796,361	76	24	0	0.76	0.07					
02 .x.x	Measurement	7	452	85	15	0	0.85	0.02			180,464	82	18	0	0.82	0.03					
03 .x.x	Geometry	18	992	90	10	0	0.90	0.01			394,032	86	14	0	0.86	0.04					
04 .x.x	Data Analysis & Probabilit	8	475	75	24	0	0.75	0.02			188,888	70	30	0	0.69	0.06					
05 .x.x	Algebraic Thinking	11	537	84	15	0	0.84	0.02			213,399	80	20	0	0.80	0.04					

Percentages may not sum to 100% due to rounding. "****" indicates unreportable populations with fewer than 10 students or populations where all students score at the same performance level.



**2010-2011
INTERIM PERFORMANCE REPORT
MATHEMATICS CORE CONTENT**

School: Lansdowne Elementary School
 District: Fayette County
 Code: 165062
 Grade: 04

		SCHOOL										STATE									
				Percents										Percents						School -State Mean	
	OPEN RESPONSE	No. Items	No. Observations	B	0	1	2	3	4	Mean	Std. Err.	No. Observations	B	0	1	2	3	4	Mean	Mean	
01 .x.x	Number Prop Oper	4	153	0	19	20	22	15	24	2.1	0.1	75,720	0	16	22	29	17	16	1.9	0.2	
02 .x.x	Measurement	1	15	0	33	27	0	13	27	1.7	0.4	8,365	0	41	13	10	21	15	1.5	0.2	
03 .x.x	Geometry	2	119	0	12	9	15	16	48	2.8	0.1	59,035	0	9	17	16	18	39	2.6	0.2	
04 .x.x	Data Analysis & Probabilit	1	15	0	0	40	33	20	7	1.9	0.3	8,398	0	6	34	29	24	7	1.9	0.0	
05 .x.x	Algebraic Thinking	2	117	0	5	22	35	22	15	2.2	0.1	59,191	0	5	25	32	24	14	2.2	0.0	
MULTIPLE CHOICE				Correct	Incorrect	Omit/Mult						Correct	Incorrect	Omit/Mult							
01 .x.x	Number Prop Oper	31	1,361	73	27	0	0.73	0.01			683,433	69	31	0	0.68	0.05					
02 .x.x	Measurement	7	284	63	37	0	0.63	0.03			143,069	64	36	0	0.63	0.00					
03 .x.x	Geometry	14	578	80	20	0	0.80	0.02			286,521	78	22	0	0.78	0.02					
04 .x.x	Data Analysis & Probabilit	12	617	77	23	0	0.77	0.02			312,114	73	27	0	0.73	0.04					
05 .x.x	Algebraic Thinking	11	524	74	26	0	0.74	0.02			261,171	70	29	0	0.70	0.04					

Percentages may not sum to 100% due to rounding. "****" indicates unreportable populations with fewer than 10 students or populations where all students score at the same performance level.



**2010-2011
INTERIM PERFORMANCE REPORT
MATHEMATICS CORE CONTENT**

Run Date: 9/15/2011

Page 15

School: Lansdowne Elementary School
 District: Fayette County
 Code: 165062
 Grade: 05

	OPEN RESPONSE	No. Items	No. Observations	SCHOOL								STATE								
				Percents					Mean	Std. Err.	No. Observations	Percents					Mean	School -State Mean		
B	0	1	2	3	4	B	0	1				2	3	4						
01 .x.x	Number Prop Oper	4	137	0	7	12	18	23	40	2.8	0.1	75,114	0	9	18	18	25	30	2.5	0.3
02 .x.x	Measurement	1	15	0	33	20	7	13	27	1.8	0.4	8,500	0	40	23	13	11	13	1.3	0.5
03 .x.x	Geometry	2	104	0	1	13	33	31	22	2.6	0.1	58,454	0	6	24	30	25	15	2.2	0.4
04 .x.x	Data Analysis & Probabilit	1	90	0	7	18	12	23	40	2.7	0.2	50,124	0	19	16	13	18	33	2.3	0.4
05 .x.x	Algebraic Thinking	1	14	0	14	0	43	0	43	2.6	0.4	8,304	0	12	14	21	16	37	2.5	0.1

	MULTIPLE CHOICE	No. Items	No. Observations	Correct			Incorrect			Omit/Mult			Mean	Std. Err.	No. Observations	Correct			Incorrect			Omit/Mult			Mean	Std. Err.
				Count	Percent	Count	Percent	Count	Percent	Count	Percent	Count				Percent	Count	Percent	Count	Percent	Count	Percent				
01 .x.x	Number Prop Oper	29	1,185	69	62.4%	31	27.6%	0	0%	0.69	0.01	660,112	65	62.4%	35	27.6%	0	0%	0.65	0.04						
02 .x.x	Measurement	9	284	69	76.7%	31	33.3%	0	0%	0.69	0.03	158,676	63	76.7%	37	33.3%	0	0%	0.63	0.06						
03 .x.x	Geometry	14	511	82	61.4%	18	13.5%	0	0%	0.82	0.02	283,914	79	61.4%	21	13.5%	0	0%	0.79	0.03						
04 .x.x	Data Analysis & Probabilit	11	464	71	64.5%	30	27.3%	0	0%	0.70	0.02	258,950	64	64.5%	36	27.3%	0	0%	0.64	0.06						
05 .x.x	Algebraic Thinking	10	450	74	66.7%	26	23.3%	0	0%	0.74	0.02	250,620	67	66.7%	33	23.3%	0	0%	0.67	0.07						

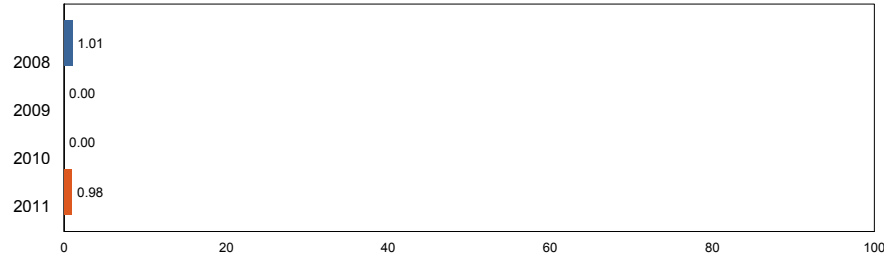
Percentages may not sum to 100% due to rounding. "***" indicates unreportable populations with fewer than 10 students or populations where all students score at the same performance level.



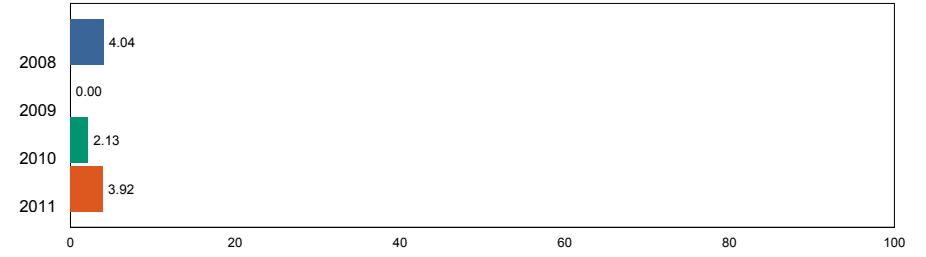
**2010-2011
INTERIM PERFORMANCE REPORT
SCIENCE TREND DATA
Performance Level Percents**

School: Lansdowne Elementary School
 District: Fayette County
 Code: 165062
 Grade: Elementary

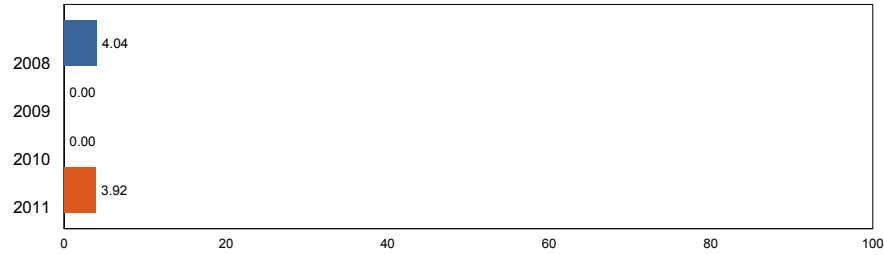
Novice Low



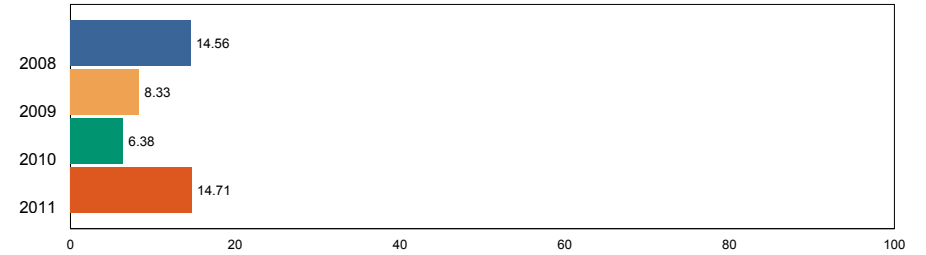
Apprentice - Medium



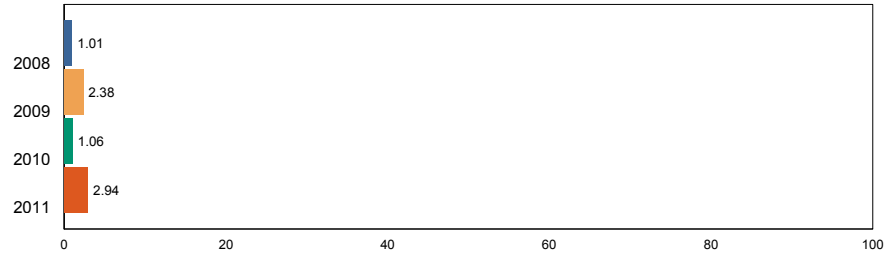
Novice - Medium



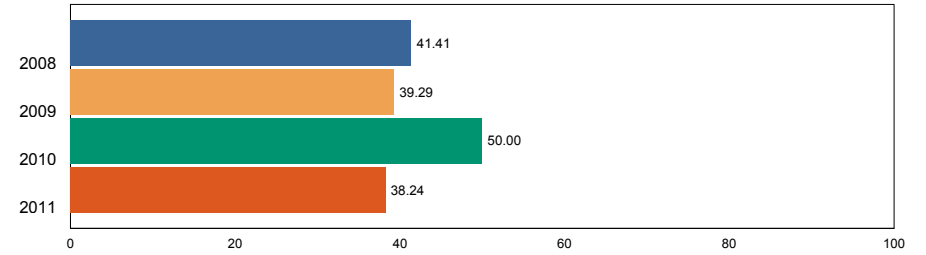
Apprentice - High



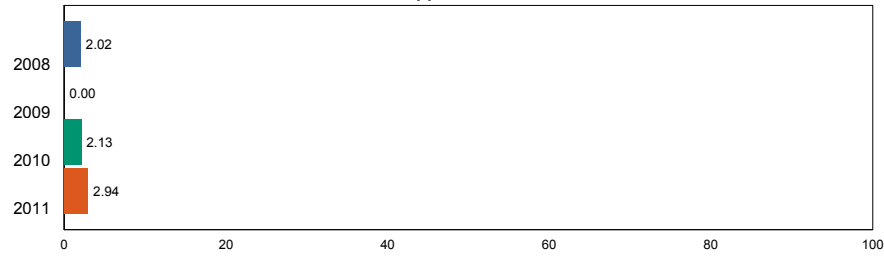
Novice - High



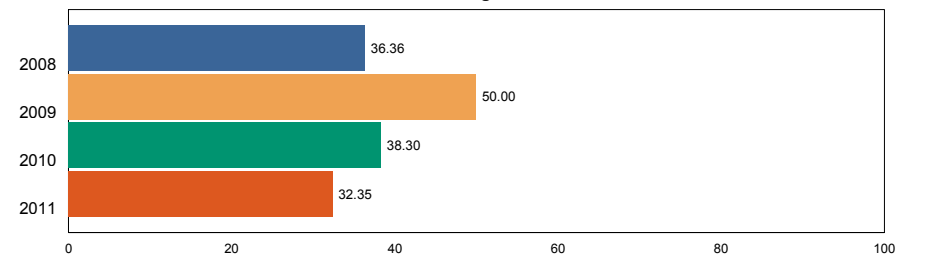
Proficient



Apprentice - Low



Distinguished



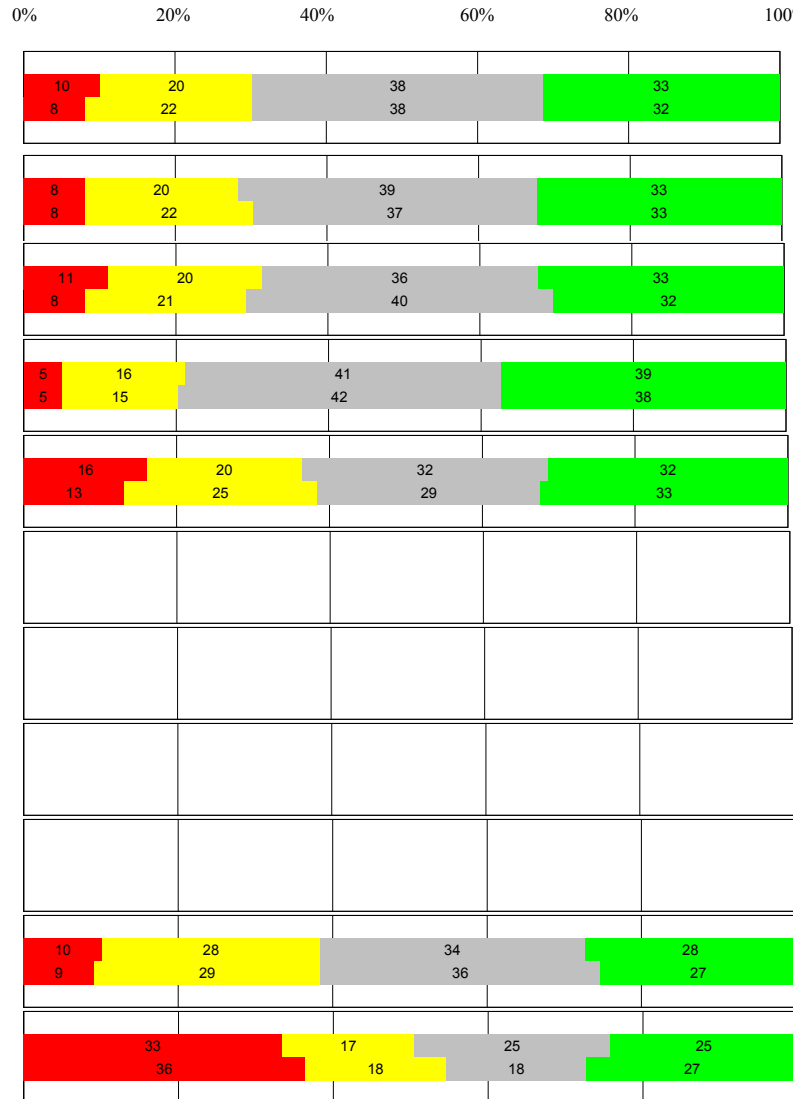
The horizontal bar represents the percent of students scoring at a performance level within a particular year. Percentages may not sum to 100% due to rounding.





**2010-2011
INTERIM PERFORMANCE REPORT
SCIENCE DISAGGREGATION
Performance Level Percents**

School: Lansdowne Elementary School
 District: Fayette County
 Code: 165062
 Grade: 04



Tested Students	N%	A%	P%	D%	P+D%
Total	10	20	38	33	70.19
Female	8	20	39	33	71.43
Male	11	20	36	33	69.09
White (Non-Hispanic)	5	16	41	39	79.69
African-American	16	20	32	32	64.00
Hispanic	***				
Asian	***				
Other	***				
Title I	10	20	38	33	70.19
Migrant					
Identified LEP	***				
Extended Sch Services	25	50	19	6	25.00
Gifted/Talented	0	0	23	77	100.00
F/R Lunch Approved	10	28	34	28	62.07
Vocational/2 Credits					
Disability (KCCT)	33	17	25	25	50.00
With Accomodations	40	20	20	20	40.00
Alternate Assessment	***				
100 Day Students					
Total	8	22	38	32	70.59
Female	8	22	37	33	69.39
Male	8	21	40	32	71.70
White (Non-Hispanic)	5	15	42	38	80.00
African-American	13	25	29	33	62.50
Hispanic	***				
Asian	***				
Other	***				
Title I	8	22	38	32	70.59
Migrant					
Identified LEP	***				
Extended Sch Services	25	50	19	6	25.00
Gifted/Talented	0	0	23	77	100.00
F/R Lunch Approved	9	29	36	27	62.50
Vocational/2 Credits					
Disability (KCCT)	36	18	18	27	45.45
With Accomodations	40	20	20	20	40.00
Alternate Assessment	***				

Percentages may not sum to 100% due to rounding. "****" indicates unreportable populations with fewer than 10 students or populations where all students score at the same performance level.



**2010-2011
INTERIM PERFORMANCE REPORT
SCIENCE CORE CONTENT**

School: Lansdowne Elementary School
 District: Fayette County
 Code: 165062
 Grade: 04

Item	Description	No. Items	No. Observations	SCHOOL							STATE							School -State Mean		
				Percents							No. Observations	Percents							Mean	
				B	0	1	2	3	4	Mean		Std. Err.	B	0	1	2	3			4
01 .x.x	Physical Science	2	33	0	15	18	24	36	6	2.0	0.2	16,847	0	16	18	38	20	7	1.8	0.2
02 .x.x	Earth Space Science	3	134	0	10	12	30	40	8	2.2	0.1	67,588	0	9	15	36	34	5	2.1	0.1
03 .x.x	Biological Science	3	136	0	1	10	38	45	6	2.4	0.1	67,323	0	2	11	39	41	7	2.4	0.0
04 .x.x	Unifying Concepts	2	117	0	6	11	40	30	13	2.3	0.1	59,191	0	2	15	44	29	9	2.3	0.0

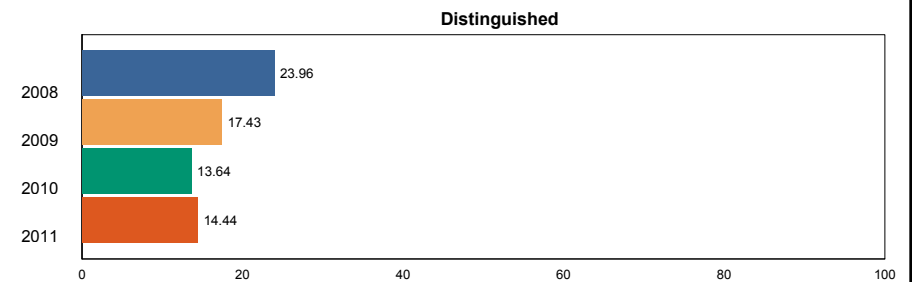
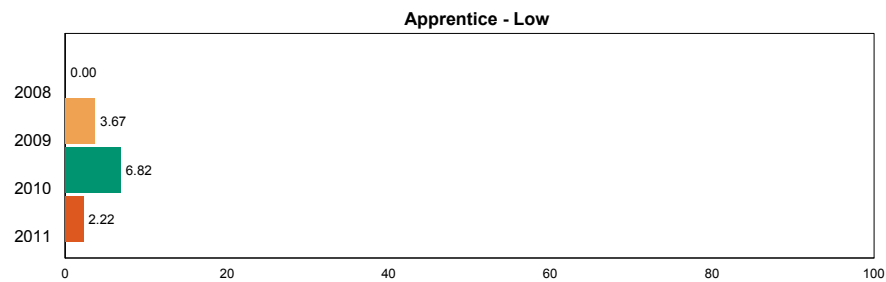
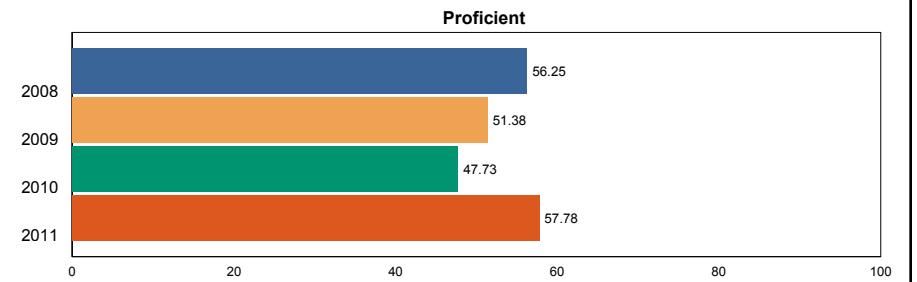
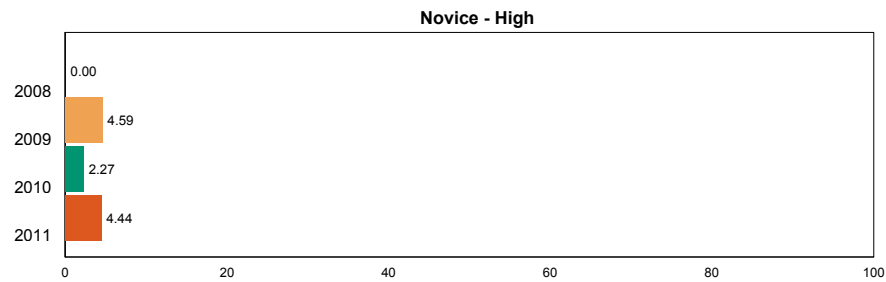
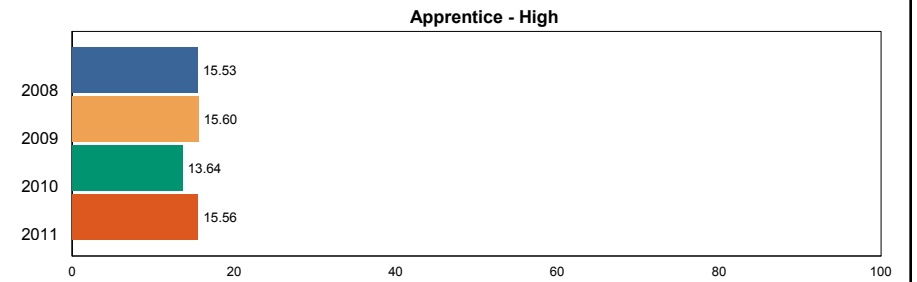
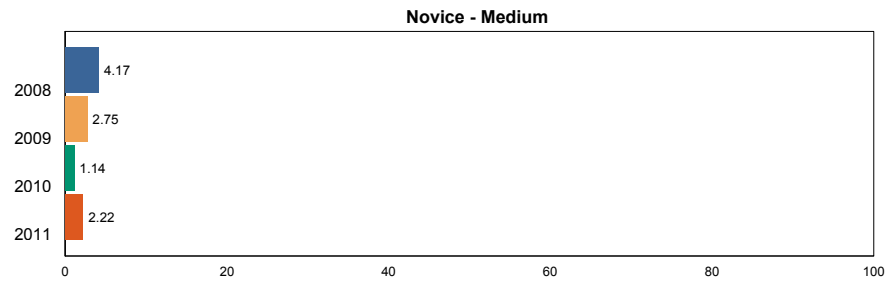
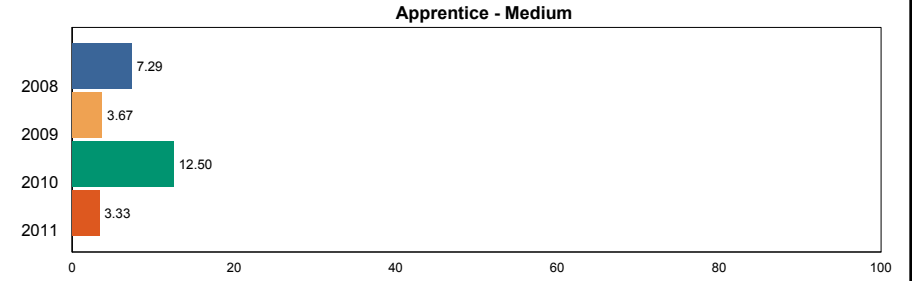
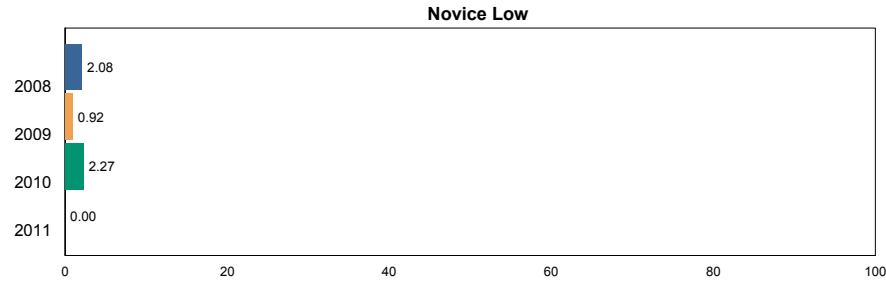
Item	Description	No. Items	No. Observations	MULTIPLE CHOICE			Correct	Incorrect	Omit/Mult	Correct	Incorrect	Omit/Mult	Correct	Incorrect	Omit/Mult
				Correct	Incorrect	Omit/Mult									
01 .x.x	Physical Science	18	808	77	23	0	0.77	0.01	404,688	82	18	0	0.82	-0.05	
02 .x.x	Earth Space Science	19	823	72	28	0	0.72	0.02	413,086	71	29	0	0.71	0.01	
03 .x.x	Biological Science	22	962	78	22	0	0.78	0.01	480,647	77	22	0	0.77	0.01	
04 .x.x	Unifying Concepts	14	654	87	13	0	0.87	0.01	328,729	84	16	0	0.84	0.03	

Percentages may not sum to 100% due to rounding. "***" indicates unreportable populations with fewer than 10 students or populations where all students score at the same performance level.



**2010-2011
INTERIM PERFORMANCE REPORT
SOCIAL STUDIES TREND DATA
Performance Level Percents**

School: Lansdowne Elementary School
 District: Fayette County
 Code: 165062
 Grade: Elementary



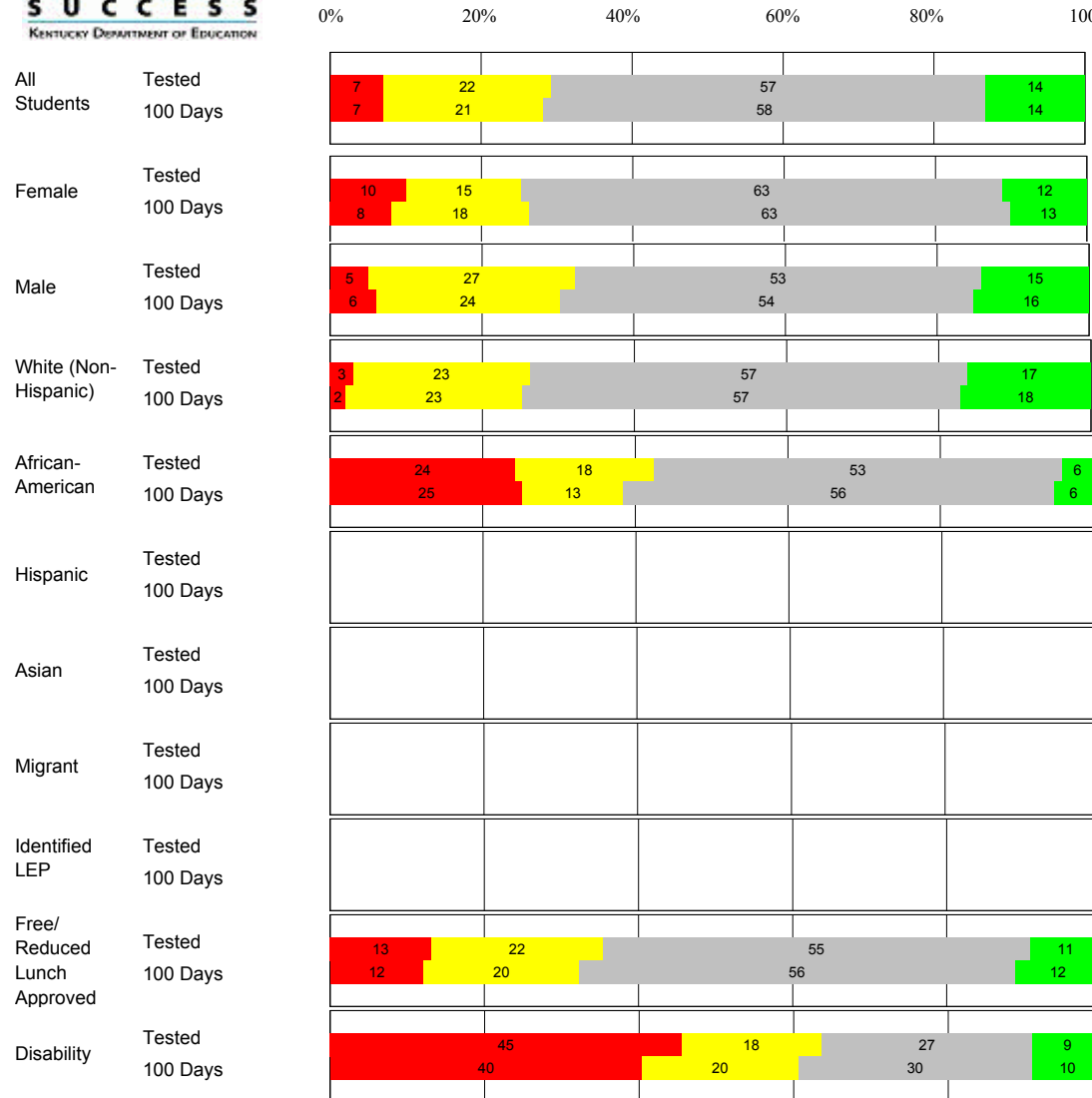
The horizontal bar represents the percent of students scoring at a performance level within a particular year. Percentages may not sum to 100% due to rounding.





**2010-2011
INTERIM PERFORMANCE REPORT
SOCIAL STUDIES DISAGGREGATION
Performance Level Percents**

School: Lansdowne Elementary School
 District: Fayette County
 Code: 165062
 Grade: 05



Tested Students	N%	A%	P%	D%	P+D%
Total	7	22	57	14	70.83
Female	10	15	63	12	75.61
Male	5	27	53	15	67.27
White (Non-Hispanic)	3	23	57	17	73.85
African-American	24	18	53	6	58.82
Hispanic	***				
Asian	***				
Other	***				
Title I	7	22	57	14	70.83
Migrant					
Identified LEP	***				
Extended Sch Services	16	5	79	0	78.95
Gifted/Talented	0	9	27	64	90.91
F/R Lunch Approved	13	22	55	11	65.45
Vocational/2 Credits					
Disability (KCCT)	45	18	27	9	36.36
With Accomodations	45	18	27	9	36.36
Alternate Assessment					
100 Day Students					
Total	7	21	58	14	72.22
Female	8	18	63	13	75.00
Male	6	24	54	16	70.00
White (Non-Hispanic)	2	23	57	18	75.41
African-American	25	13	56	6	62.50
Hispanic	***				
Asian	***				
Other	***				
Title I	7	21	58	14	72.22
Migrant					
Identified LEP	***				
Extended Sch Services	16	5	79	0	78.95
Gifted/Talented	0	9	27	64	90.91
F/R Lunch Approved	12	20	56	12	68.00
Vocational/2 Credits					
Disability (KCCT)	40	20	30	10	40.00
With Accomodations	40	20	30	10	40.00
Alternate Assessment					

Percentages may not sum to 100% due to rounding. "****" indicates unreportable populations with fewer than 10 students or populations where all students score at the same performance level.



**2010-2011
INTERIM PERFORMANCE REPORT
SOCIAL STUDIES CORE CONTENT**

Run Date: 9/15/2011

Page 21

School: Lansdowne Elementary School
 District: Fayette County
 Code: 165062
 Grade: 05

		SCHOOL										STATE									
				Percents										Percents						School -State Mean	
	OPEN RESPONSE	No. Items	No. Observations	B	0	1	2	3	4	Mean	Std. Err.	No. Observations	B	0	1	2	3	4	Mean	Mean	
01	.x.x	Government & Civics	2	106	0	2	24	57	16	2	1.9	0.1	58,447	0	5	41	40	11	2	1.6	0.3
02	.x.x	Cultures & Societies	1	16	0	13	13	63	13	0	1.8	0.2	8,330	0	6	23	55	13	4	1.9	-0.1
03	.x.x	Economics	1	90	0	6	23	47	17	8	2.0	0.1	50,124	0	11	34	39	13	4	1.7	0.3
04	.x.x	Geography	2	28	0	0	43	36	21	0	1.8	0.2	16,632	0	8	38	37	14	3	1.7	0.1
05	.x.x	Historical Perspective	3	120	0	2	32	53	11	3	1.8	0.1	66,963	0	6	37	46	10	2	1.6	0.2
		MULTIPLE CHOICE		Correct	Incorrect	Omit/Mult						Correct	Incorrect	Omit/Mult							
01	.x.x	Government & Civics	14	585	65	35	0		0.65	0.02	325,905	64	36	0		0.64	0.01				
02	.x.x	Cultures & Societies	11	387	69	31	0		0.69	0.02	217,137	69	31	0		0.69	0.00				
03	.x.x	Economics	11	466	78	22	0		0.78	0.02	258,943	73	27	0		0.73	0.05				
04	.x.x	Geography	16	689	64	36	0		0.64	0.02	384,300	66	34	0		0.66	-0.02				
05	.x.x	Historical Perspective	27	1,081	72	28	0		0.72	0.01	601,526	69	31	0		0.69	0.03				

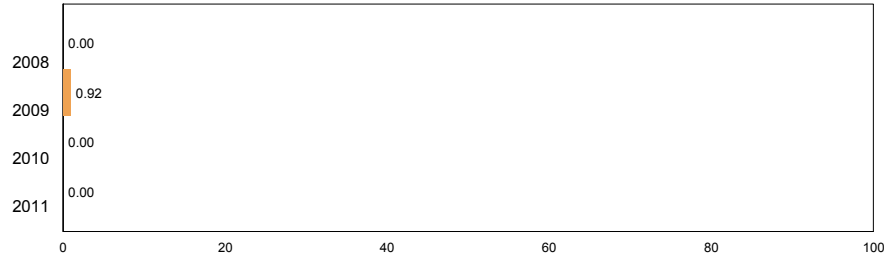
Percentages may not sum to 100% due to rounding. "****" indicates unreportable populations with fewer than 10 students or populations where all students score at the same performance level.



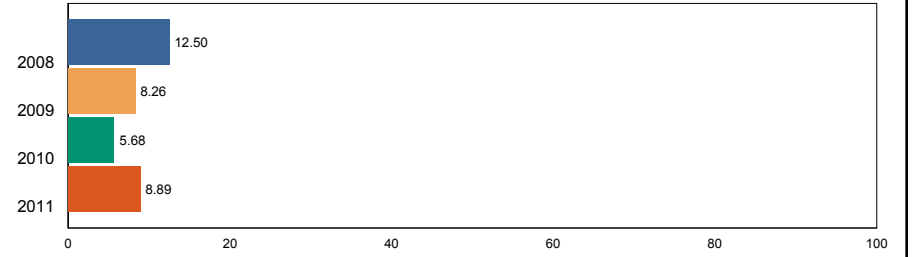
**2010-2011
INTERIM PERFORMANCE REPORT
ON-DEMAND WRITING TREND DATA
Performance Level Percents**

School: Lansdowne Elementary School
 District: Fayette County
 Code: 165062
 Grade: Elementary

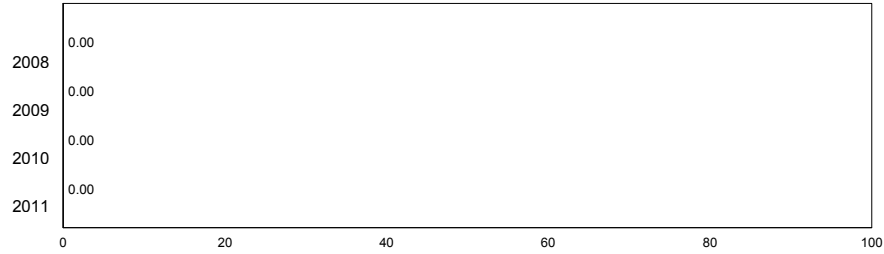
Novice Low



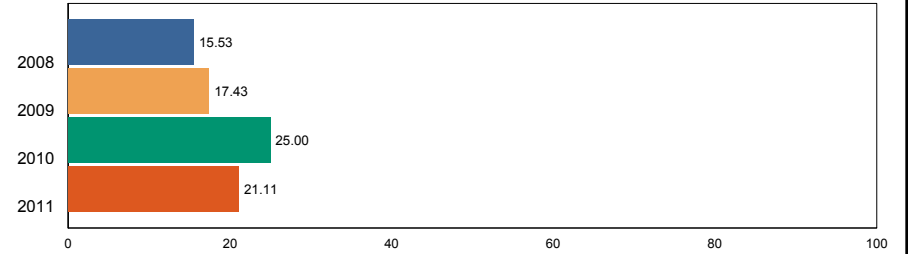
Apprentice - Medium



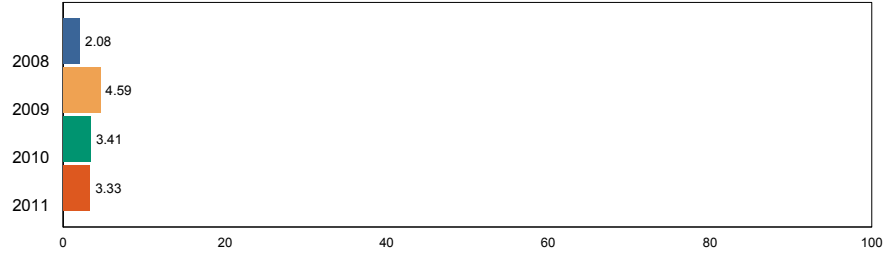
Novice - Medium



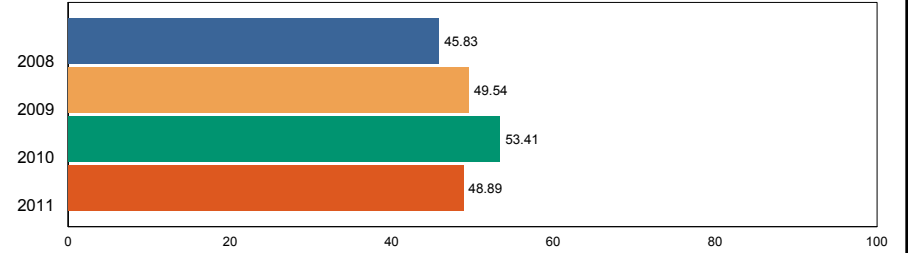
Apprentice - High



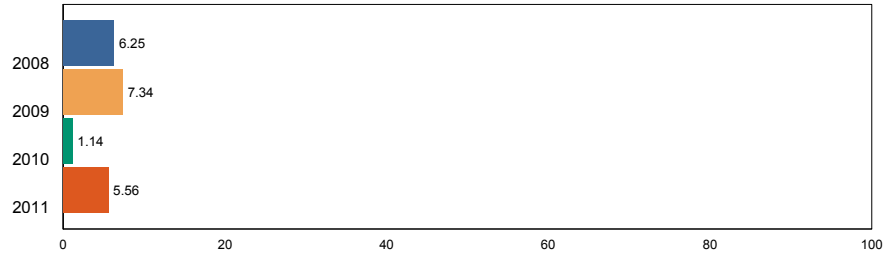
Novice - High



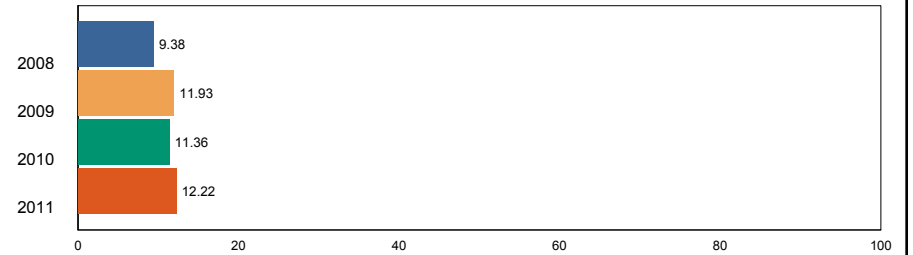
Proficient



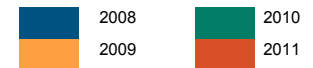
Apprentice - Low



Distinguished



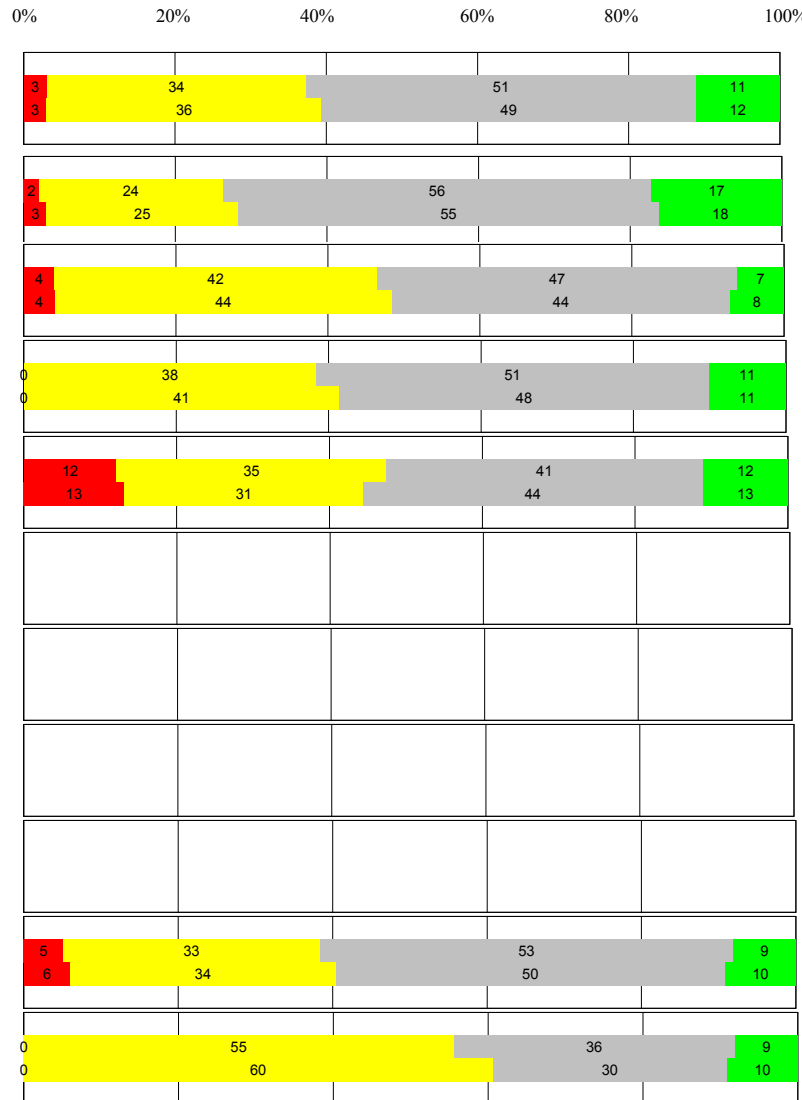
The horizontal bar represents the percent of students scoring at a performance level within a particular year. Percentages may not sum to 100% due to rounding.





**2010-2011
INTERIM PERFORMANCE REPORT
WRITING ON-DEMAND DISAGGREGATION
Performance Level Percents**

School: Lansdowne Elementary School
 District: Fayette County
 Code: 165062
 Grade: 05



Tested Students	N%	A%	P%	D%	P+D%
Total	3	34	51	11	62.50
Female	2	24	56	17	73.17
Male	4	42	47	7	54.55
White (Non-Hispanic)	0	38	51	11	61.54
African-American	12	35	41	12	52.94
Hispanic	***				
Asian	***				
Other	***				
Title I	3	34	51	11	62.50
Migrant					
Identified LEP	***				
Extended Sch Services	16	42	37	5	42.11
Gifted/Talented	0	0	55	45	100.00
F/R Lunch Approved	5	33	53	9	61.82
Vocational/2 Credits					
Disability (KCCT)	0	55	36	9	45.45
With Accomodations	0	55	36	9	45.45
Alternate Assessment					

100 Day Students	N%	A%	P%	D%	P+D%
Total	3	36	49	12	61.11
Female	3	25	55	18	72.50
Male	4	44	44	8	52.00
White (Non-Hispanic)	0	41	48	11	59.02
African-American	13	31	44	13	56.25
Hispanic	***				
Asian	***				
Other	***				
Title I	3	36	49	12	61.11
Migrant					
Identified LEP	***				
Extended Sch Services	16	42	37	5	42.11
Gifted/Talented	0	0	55	45	100.00
F/R Lunch Approved	6	34	50	10	60.00
Vocational/2 Credits					
Disability (KCCT)	0	60	30	10	40.00
With Accomodations	0	60	30	10	40.00
Alternate Assessment					

Percentages may not sum to 100% due to rounding. "****" indicates unreportable populations with fewer than 10 students or populations where all students score at the same performance level.



**2010-2011
KENTUCKY PERFORMANCE REPORT
WRITING ON-DEMAND CORE CONTENT**

School: Lansdowne Elementary School
 District: Fayette County
 Code: 165062
 Grade: 05

WRITING PROMPT	No. Observations	SCHOOL											Mean	State											Mean	School -State Mean
		B	0	1	2	3	4	5	6	7	8	B		0	1	2	3	4	5	6	7	8				
Persuade																										
Content	31	0	0	0	10	6	68	10	6	0	0	3.97	0	1	1	10	11	40	20	14	2	1	4.13	-0.16		
Structure	31	0	0	0	6	10	71	10	3	0	0	3.94	0	3	3	10	12	42	18	10	1	0	3.88	0.06		
Convention	31	0	0	0	10	13	61	10	6	0	0	3.90	0	0	0	15	13	41	18	11	1	0	4.02	-0.12		
Inform																										
Content	30	0	0	0	7	10	40	13	30	0	0	4.50	0	2	2	11	11	40	18	13	2	1	4.03	0.47		
Structure	30	0	0	0	7	27	27	17	23	0	0	4.23	0	3	4	11	13	41	16	10	1	0	3.83	0.40		
Convention	30	0	0	0	10	13	37	10	30	0	0	4.37	0	0	0	16	13	42	17	10	1	1	3.97	0.40		
Narrate for a purpose																										
Content	29	0	0	0	10	10	38	21	21	0	0	4.31	0	1	1	8	8	40	21	18	2	1	4.34	-0.03		
Structure	29	0	0	3	17	10	45	17	7	0	0	3.76	0	2	2	8	11	46	18	11	1	0	4.03	-0.27		
Convention	29	0	0	0	10	14	45	17	14	0	0	4.10	0	0	0	11	11	44	19	12	1	0	4.15	-0.05		

MULTIPLE CHOICE		Correct	Incorrect	Omit/Mult	Std. Err.	Correct	Incorrect	Omit/Mult	Std. Err.				
Editing	34	661	72	28	0	0.72	0.02	367,480	73	27	0	0.73	-0.01
Writing Process	52	1,080	74	26	0	0.74	0.01	601,488	74	26	0	0.74	0.00
Revising	18	419	77	23	0	0.77	0.02	234,008	76	24	0	0.76	0.01

Percentages may not sum to 100% due to rounding. "****" indicates unreportable populations with fewer than 10 students or populations where all students score at the same performance level.