



# Update on FCPS Construction/Renovation Projects

May 2011

---

# Leestown Middle – Renovation

---

- ▶ Architect: Lucas/Schwering Architects
- ▶ General Contractor: D.W. Wilburn, Inc.
- ▶ Substantial Completion Date: November, 2010  
(Except Bus Loop Improvements): (July, 2011)
- ▶ GC Contract Sum: \$11,182,000
- ▶ Total Project Cost: \$13,682,854
- ▶ Change Orders to Date (13): \$69,382
- ▶ Current Phase: 4a
- ▶ Estimated Completion: 97%

# Leestown Middle – Renovation

Rendering of Final Façade



May 2011

# Leestown Middle – Renovation

---

## ▶ **Work Completed in Last 30 Days:**

- ▶ Portables moved by FCPS.
- ▶ Completion of bus loop and exterior improvements to resume after close of school year.

# Leestown Middle – Renovation

---

Site Work



Boys Locker Room



Computer Room



Girls Locker Room



# Leestown Middle – Renovation

---

**FMD Classroom**



**Guidance Office**



**Health Classroom**



**Phase 3 Corridor**



# Wellington Elementary – New Construction

---

- ▶ Architect: GBBN Architects
- ▶ General Contractor: D.W. Wilburn, Inc.
- ▶ Substantial Completion Date: August 2011
- ▶ GC Contract Sum: \$13,566,000
- ▶ Total Project Cost: \$16,457,368
- ▶ Change Orders to Date (5): \$150,610
- ▶ Current Phase: Construction
- ▶ Estimated Completion: 91%

# Wellington Elementary–New Construction

Rendering of Final Façade



May 2011

# Wellington Elementary–New Construction

---

## ▶ **Work Completed to Date:**

- ▶ Landscaping has begun
- ▶ Decorative Canopies are installed
- ▶ Bleachers have been installed

## ▶ **Current Work Effort (May):**

- ▶ Sidewalks will complete
- ▶ Entrance canopy will finish
- ▶ Gym Floor will complete

# Wellington Elementary–New Construction

Sod is Being Installed



Bus Loop Permeable Pavers



Decorative Canopies at North Entry



South East Entry Canopy



May 2011

# Wellington Elementary–New Construction

Decorative Canopies at South Entry



Concrete Landings – Outdoor Classroom



Lights in South Classrooms



Corridor Floor Tiles



May 2011

## Locust Trace Agriscience Farm - Phase 2

---

- ▶ Architect: Tate.Hill.Jacobs: Architects
- ▶ General Contractor: Messer Construction Co.
- ▶ Substantial Completion Date: October 15, 2011
- ▶ GC Contract Sum: \$14,930,200
- ▶ Total Project Cost: \$18,011,353
- ▶ Change Orders to Date (10): \$323,898
- ▶ Current Phase: Construction
- ▶ Estimated Completion: 67%

# Locust Trace Agriscience Farm – Phase 2

Rendering of Final Façade



ACADEMIC CLASSROOM BUILDING - NORTH ELEVATION



ARENA - SOUTH ELEVATION

# Locust Trace Agriscience Farm – Phase 2

Rendering of Final Façade



○ ACADEMIC CLASSROOM BUILDING - WEST ELEVATION



○ ARENA - WEST ELEVATION

# Locust Trace Agriscience Farm - Phase 2

---

## ▶ **Work Completed to Date:**

- ▶ Academic Bldg. standing seam roofing and metal siding 80% complete.
- ▶ Academic Bldg. stonework 75% complete.
- ▶ Academic Bldg. interior dried in.
- ▶ Academic Bldg. interior painting continues with walls and ductwork.
- ▶ Academic Bldg. Mechanical, Electrical and Plumbing work continues with startup beginning.
- ▶ Arena CMU and Steel structure complete with cement board siding beginning.
- ▶ Arena SIPS roof panel installation complete with standing seam roofing beginning.
- ▶ Greenhouse installation 90% complete.
- ▶ Store masonry wall installation complete.

# Locust Trace Agriscience Farm - Phase 2

---

## ▶ **Current Work Effort (May):**

- ▶ Academic Bldg. roofing work to complete.
- ▶ Academic Bldg. solatube daylighting assemblies installation to complete.
- ▶ Academic Bldg. photovoltaic and solar water heating system panels to complete.
- ▶ Academic Bldg. gypsum board installation to begin as building mechanicals startup.
- ▶ Academic Bldg. floor finishes to begin.
- ▶ Academic Bldg. green roof assembly on canopy to begin.
- ▶ Arena standing seam roof panel installation to complete.
- ▶ Arena exterior cementitious board siding to complete.
- ▶ Arena Mechanical, Electrical and Plumbing work to complete.
- ▶ Pervious road paver installation to complete.

# Locust Trace Agriscience Farm – Phase 2

Academic Bldg.—Entry w/ Green Roof Structure



Roof w/ Photovoltaic Installation



Roof w/ Solar Thermal Heating Tubes



Academic Bldg.—Typical Classroom

View into Lab



# Locust Trace Agriscience Farm – Phase 2

Academic Bldg.



Greenhouse Interior



Arena



Aerial Site View



May 2011

# Yates Elementary -- Renovation

---

- ▶ Architect: Sherman Carter Barnhart Architects
- ▶ General Contractor: Messer Construction
- ▶ Substantial Completion Date: August 2011
- ▶ GC Contract Sum: \$9,009,000
- ▶ Total Project Cost: \$10,918,388
- ▶ Change Orders to Date (8): \$295,102
- ▶ Current Phase: 2
- ▶ Estimated Completion: 69%

# Yates Elementary -- Renovation

Rendering of Final Façade



# Yates Elementary -- Renovation

---

## ▶ **Work Completed to Date:**

- ▶ Completed selective demolition in the Kitchen and cafeteria.
- ▶ Completed installation of drywall in Area “D”.
- ▶ Completed installation of handicap ramps in Area “D” and Corridor.
- ▶ Completed ceiling tile installation and painting in Area “C”.
- ▶ Started floor prep in Area “C”.
- ▶ Started under slab rough-ins in Kitchen.

## ▶ **Current Work Effort (May):**

- ▶ Complete MEP rough-ins in the ceiling at Area “D”.
- ▶ Complete floor tile installation in Area “C”.
- ▶ Complete under slab rough-ins in the Kitchen.
- ▶ Start ceiling grid and painting in Area “D”.
- ▶ Start foundation for new connector wing.

# Yates Elementary -- Renovation

Cafeteria Demolition



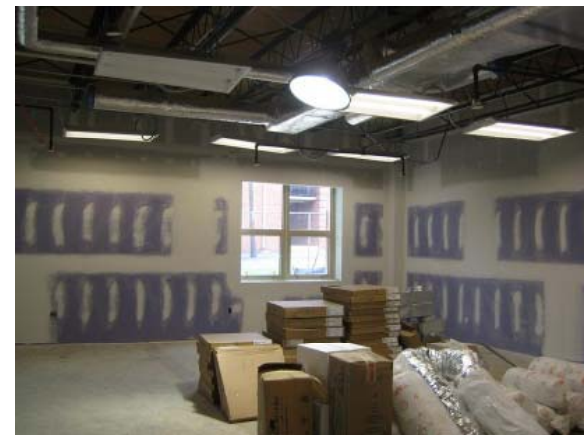
Kitchen Demo



Area "C" Corridor



Area "D" Classroom



# Yates Elementary -- Renovation

Media Center



New Art Room



Corridor Handicap Ramp



Gym Stage Handicap Ramp



# Tates Creek Middle -- Renovation

---

- ▶ Architect: Ross Tarrant Architects
- ▶ General Contractor: D.W. Wilburn, Inc.
- ▶ Substantial Completion Date: January 2012
- ▶ GC Contract Sum: \$15,614,500
- ▶ Total Project Cost: \$18,854,244
- ▶ Change Orders to Date (3): \$183,410
- ▶ Current Phase: I
- ▶ Estimated Completion: 46%

# Tates Creek Middle -- Renovation

Rendering of Final Façade



May 2011

# Tates Creek Middle -- Renovation

---

## ▶ **Work Completed to Date:**

- ▶ HVAC duct rough-ins are complete throughout Phase I
- ▶ Electrical rough-ins are complete throughout Phase I
- ▶ Mechanical and plumbing pipe rough-ins are complete
- ▶ Structural Steel and decking has completed at awnings
- ▶ HM frames are complete in Phase I
- ▶ Exterior metal wall panels at high roof are complete
- ▶ Drywall finishing nears completion – 75%
- ▶ Sprinkler piping trim-outs have begun (mainly in soffits so far)
- ▶ Stone veneer is ongoing @ envelope, 30% complete
- ▶ Storm sewer installation is ongoing
- ▶ Storefront installation is ongoing
- ▶ Primer and 1<sup>st</sup> coat of paint near completion

# Tates Creek Middle -- Renovation

---

## ▶ **Current Work Effort (May):**

- ▶ All exterior metal wall panels will complete
- ▶ Stone veneer will complete
- ▶ Sprinkler trim outs will be ongoing
- ▶ Installation of kitchen equipment will be ongoing
- ▶ All metal framing of soffits will complete
- ▶ Permanent Roof system will complete (including cap sheet)
- ▶ Underground electric conduit for permanent power will complete
- ▶ Primer and 1<sup>st</sup> coat of paint will complete @ cmu walls
- ▶ Aluminum storefronts and curtain walls will near completion
- ▶ Drywall hanging and finishing will be ongoing
- ▶ Floor finishes will be ongoing throughout building

# Tates Creek Middle -- Renovation

Structural Steel on Canopies



HM Frames



Drywall Finishing



Storefront Windows



# Tates Creek Middle -- Renovation

**Primer & First Coat Paint**



**Installation of Kitchen Equipment**



**Metal Framing of Soffits**



**Floor Finishes**

