

BRIEFING PACKET

Nonacademic Data

**Dropout, Retention, Transition to Adult Life,
Attendance and Graduation Rates**

**1993 to 2007
State Totals**



May 28, 2008

KENTUCKY DEPARTMENT OF EDUCATION

Jon Draud, Commissioner



	<u>Page</u>
Observations	1
<u>Dropout Rates</u>	
Figure 1a: Dropout Rates (Grades 9-12).....	2
Figure 1b: Dropout Rates by Grade	3
Figure 1c: Dropout Rates by Gender (Grades 9-12).....	4
Figure 1d: Dropout Rates by Ethnicity (Grades 9-12).....	5
Table 1a: Dropouts by Grade	6
Table 1b: Dropout Membership by Grade	6
Table 1c: Male Dropouts and Membership by Grade	7
Table 1d: Female Dropouts and Membership by Grade	7
Table 1e: Dropouts and Membership by Ethnicity and Grade 1999	8
Table 1f: Dropouts and Membership by Ethnicity and Grade 2000	8
Table 1g: Dropouts and Membership by Ethnicity and Grade 2001.....	8
Table 1h: Dropouts and Membership by Ethnicity and Grade 2002	9
Table 1i: Dropouts and Membership by Ethnicity and Grade 2003	9
Table 1j: Dropouts and Membership by Ethnicity and Grade 2004	9
Table 1k: Dropouts and Membership by Ethnicity and Grade 2005	10
Table 1l: Dropouts and Membership by Ethnicity and Grade 2006	10
Table 1l: Dropouts and Membership by Ethnicity and Grade 2007	10
<u>Retention Rates</u>	
Figure 2: Retention Rates by Grade	11
Table 2a: Retentions by Grade	12
Table 2b: Retention Membership by Grade	12
<u>Transition to Adult Life</u>	
Figure 3: Transition to Adult Life Percentages	13
Table 3a: Transition to Adult Life Data	14
Table 3b: Graduates by Gender and Ethnicity	14
<u>Attendance Rates</u>	
Figure 4: Attendance Rates by Grade	15
<u>Graduation Rates</u>	
Figure 5: Graduation Rates	16

Observations

Dropout Rate (grades 9-12)

- The high school dropout rate slightly decreased from 3.34 in 2006 to 3.17 in 2007.
- The male dropout rate continues to be greater than the female dropout rate.
- The male dropout rate slightly decreased from 3.91 in 2006 to 3.69 in 2007.
- The female dropout rate slightly decreased from 2.69 in 2006 to 2.64 in 2007.
- The African American and Hispanic dropout rates continue to be greater than the White dropout rate.
- The White dropout rate slightly decreased from 3.03 in 2006 to 2.94 in 2007.
- The African American dropout rate decreased from 5.45 in 2006 to 4.77 in 2007.
- The Hispanic dropout rate decreased from 6.11 in 2006 to 5.46 in 2007.

Retention Rate (grades 4-12)

- The retention rate increased from 2.92 in 2006 to 3.00 in 2007.
- The 9th grade retention rate increased from 9.64 in 2006 to 10.02 in 2007 and continues to exceed the rates at other grade levels.

Transition to Adult Life

- The percent of graduates that were considered successful for transition to adult life slightly decreased from 96.07 in 2006 to 95.70 in 2007.
- The percent of graduates attending college in Kentucky slightly decreased from 49.6 in 2006 to 48.7 in 2007.

Attendance Rate

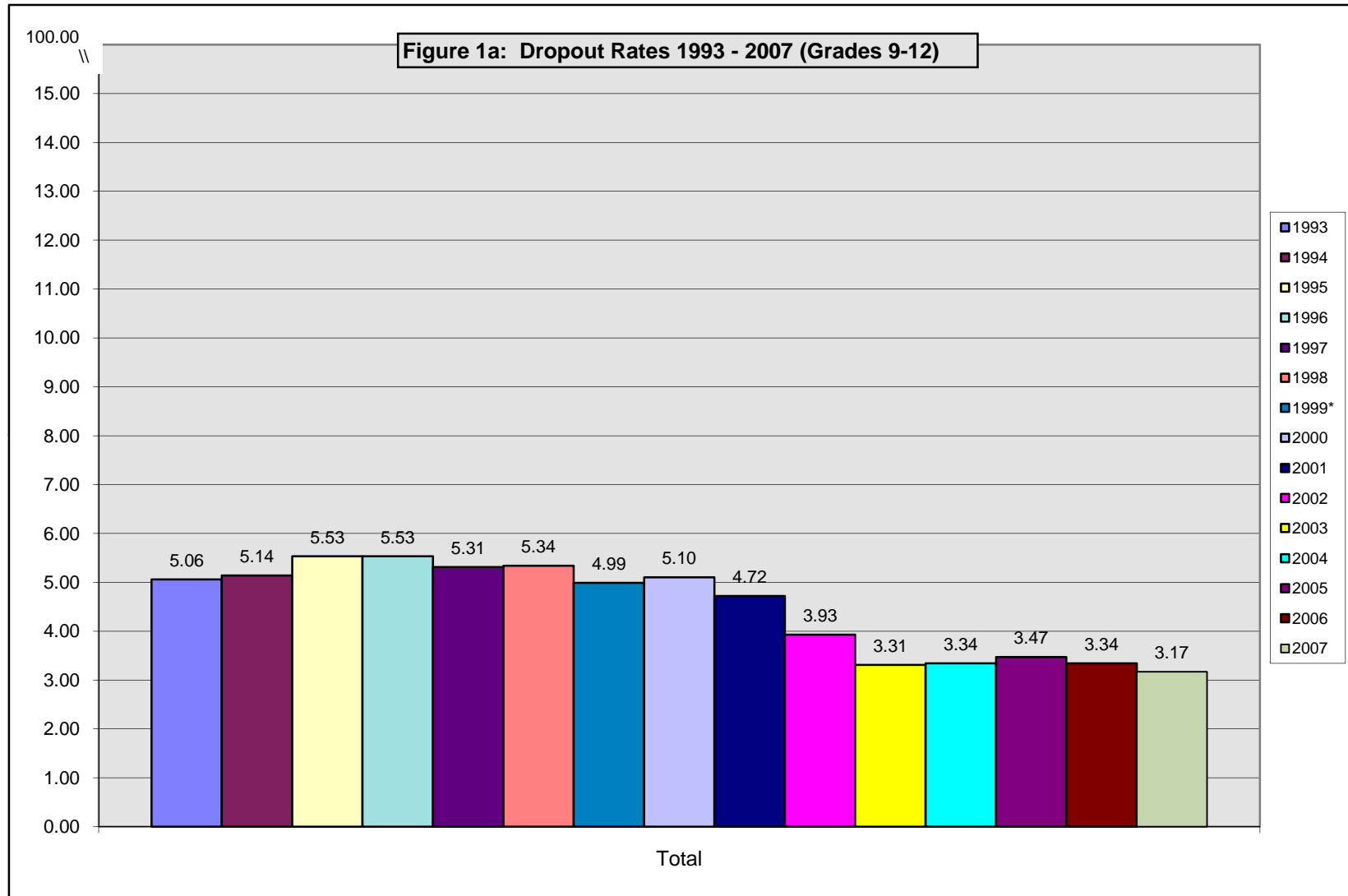
- The attendance rate slightly decreased from 94.60 in 2006 to 94.18 in 2007.

Graduation Rate

- The graduation rate slightly increased from 83.26 in 2006 to 83.72 in 2007.

Figure 1a: Dropout Rates 1993 - 2007 (Grades 9-12)

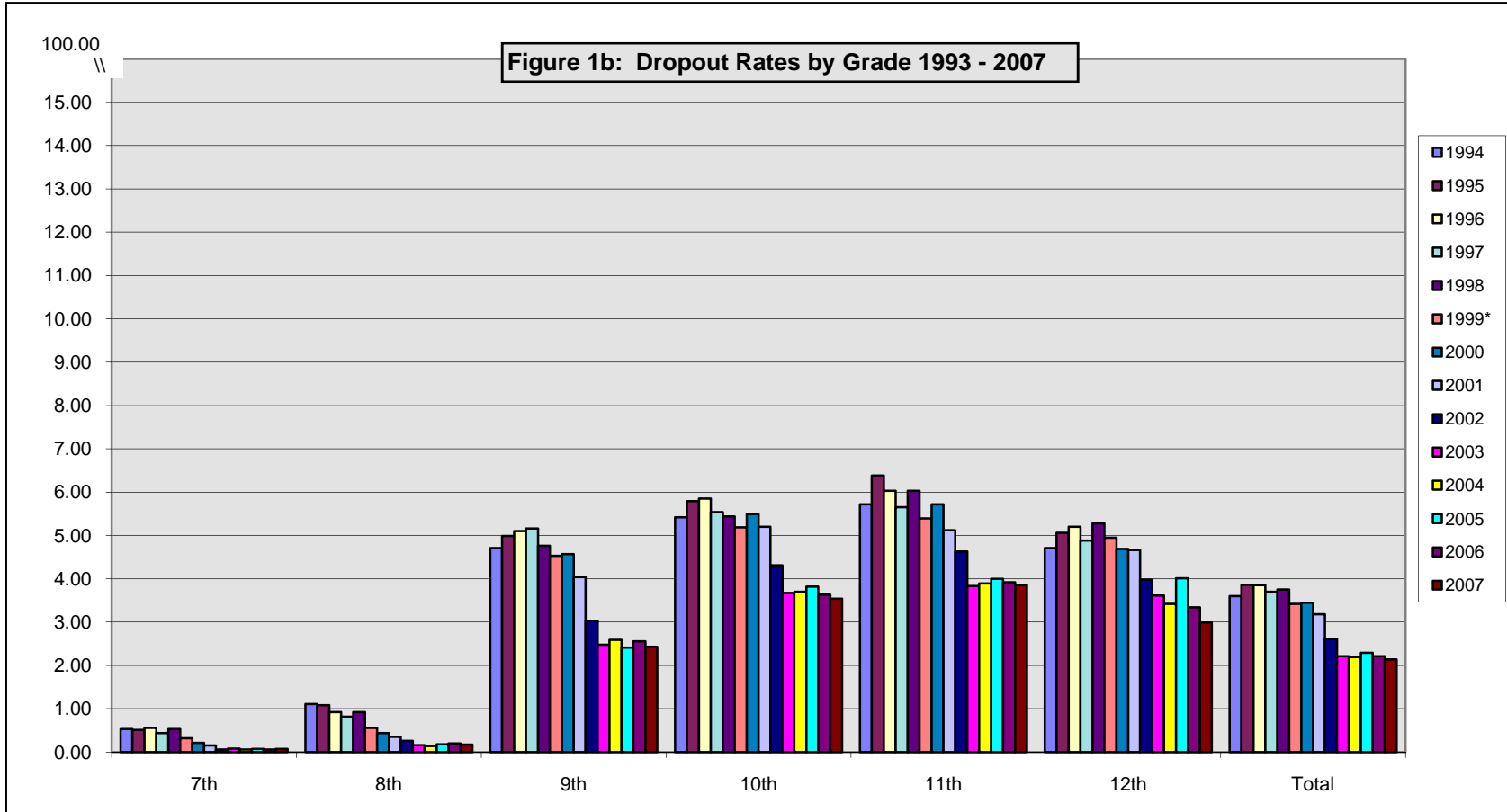
	1993	1994	1995	1996	1997	1998	1999*	2000	2001	2002	2003	2004	2005	2006	2007
Total	5.06	5.14	5.53	5.53	5.31	5.34	4.99	5.10	4.72	3.93	3.31	3.34	3.47	3.34	3.17



*Prior to 1998-99, if a student failed to return to school by October 1st, that student was considered a dropout for the past year and the grade which they had completed. Beginning in 1998-99, a student who failed to return to school by October 1st was considered a dropout for the grade and year for which they failed to return. Also beginning in 1998-99, dropout membership was adjusted to equal fall membership. These adjustments were required to be consistent with the National Center for Education Statistics' (NCES) dropout definition.

Figure 1b: Dropout Rates by Grade 1993 - 2007

	1993	1994	1995	1996	1997	1998	1999*	2000	2001	2002	2003	2004	2005	2006	2007
7th	0.54	0.53	0.51	0.56	0.44	0.53	0.32	0.21	0.15	0.06	0.08	0.06	0.07	0.06	0.07
8th	0.97	1.11	1.08	0.92	0.82	0.92	0.56	0.44	0.35	0.26	0.16	0.14	0.18	0.20	0.17
9th	4.85	4.71	4.99	5.10	5.16	4.76	4.53	4.57	4.04	3.03	2.48	2.59	2.41	2.56	2.43
10th	5.28	5.42	5.79	5.85	5.54	5.44	5.19	5.49	5.20	4.31	3.67	3.70	3.82	3.63	3.54
11th	5.31	5.72	6.38	6.03	5.65	6.03	5.39	5.72	5.12	4.63	3.83	3.89	4.00	3.92	3.86
12th	4.81	4.71	5.06	5.20	4.88	5.28	4.95	4.69	4.66	3.98	3.61	3.42	4.01	3.34	2.99
Total	3.50	3.60	3.86	3.85	3.70	3.75	3.42	3.45	3.18	2.62	2.21	2.19	2.29	2.21	2.14



*Prior to 1998-99, if a student failed to return to school by October 1st, that student was considered a dropout for the past year and the grade which they had completed. Beginning in 1998-99, a student who failed to return to school by October 1st was considered a dropout for the grade and year for which they failed to return. Also beginning in 1998-99, dropout membership was adjusted to equal fall membership. These adjustments were required to be consistent with the National Center for Education Statistics' (NCES) dropout definition.

Figure 1c: Dropout Rates by Gender 1999 - 2007 (Grades 9-12)

	1999	2000	2001	2002	2003	2004	2005	2006	2007
Male	5.86	6.04	5.67	4.63	3.91	3.91	4.06	3.91	3.69
Female	4.09	4.11	3.73	3.20	2.75	2.77	2.86	2.69	2.64

Note: 1999 was the first year dropout data was available by gender

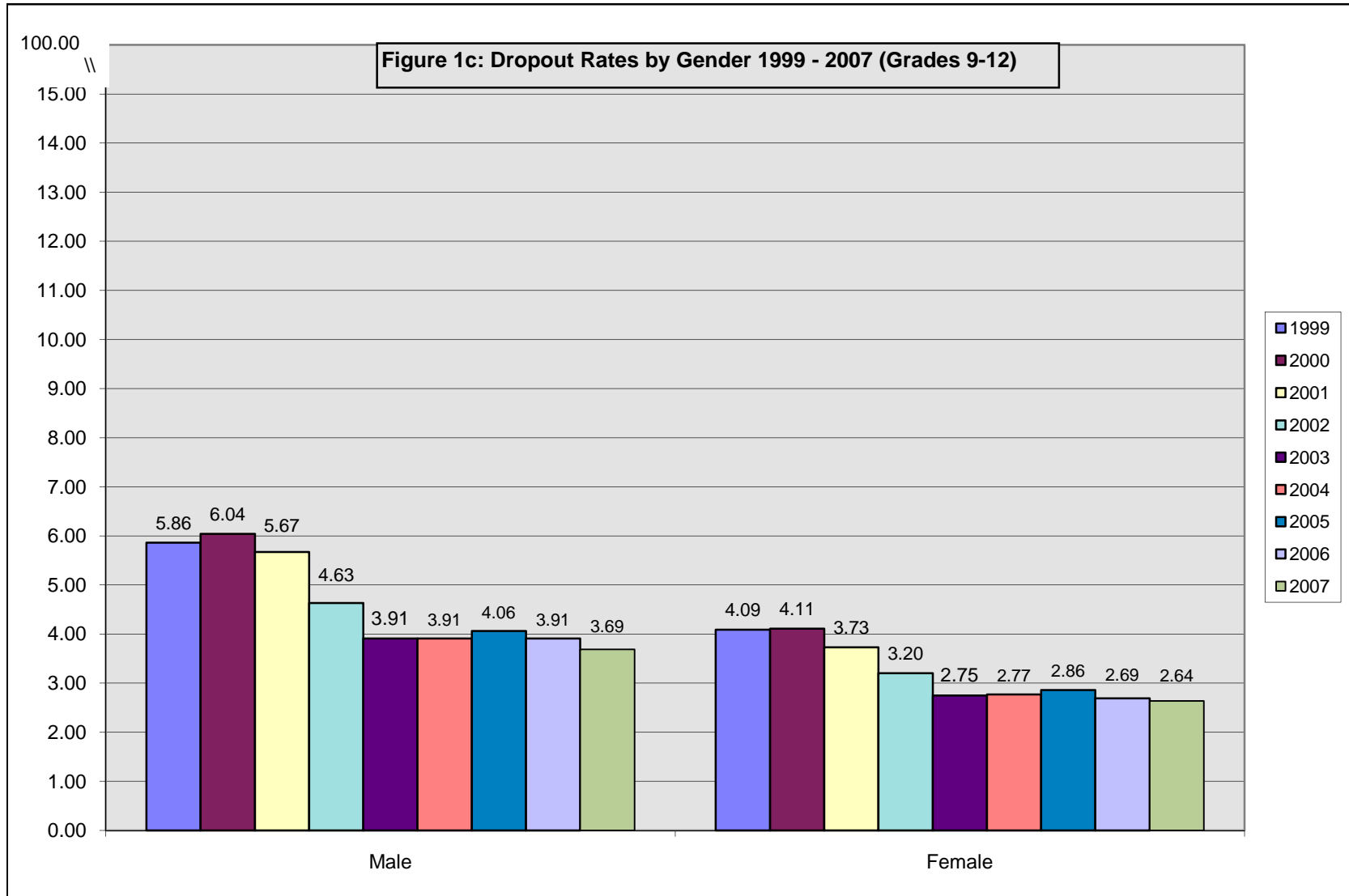


Figure 1d: Dropout Rates by Ethnicity 1999 - 2007 (Grades 9-12)

	1999	2000	2001	2002	2003	2004	2005	2006	2007
White	4.81	4.84	4.50	3.78	3.23	3.22	3.21	3.03	2.94
African American	7.00	7.81	6.83	5.52	4.45	4.56	5.75	5.45	4.77
Hispanic	7.20	6.65	7.24	5.96	4.65	4.77	5.08	6.11	5.46
Asian	3.04	2.29	3.26	2.09	1.80	1.73	1.39	1.11	1.22
American Indian	1.20	3.23	5.86	1.64	2.08	5.32	2.81	2.64	2.45
Other	2.92	3.07	2.98	2.72	2.29	2.50	3.38	3.67	3.96

Note: 1999 was the first year dropout data was available by ethnicity.

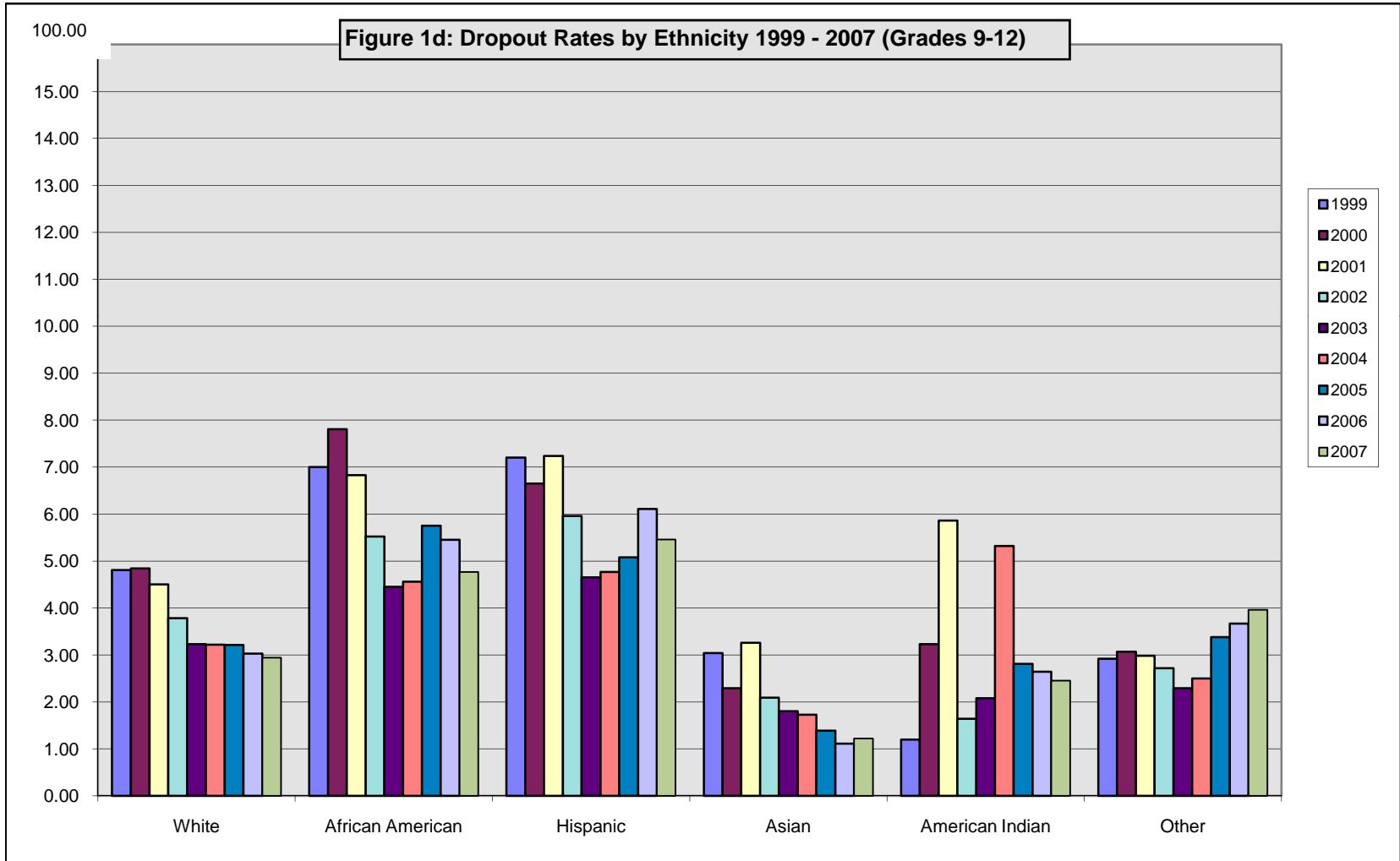


Table 1a & Table 1b: Number of Dropouts and Membership by Grade 1993 - 2007

Table 1a: Dropouts by Grade															
	1993	1994	1995	1996	1997	1998	1999*	2000	2001	2002	2003	2004	2005	2006	2007
7th	281	276	264	281	217	263	154	100	73	28	40	30	35	30	36
8th	489	566	553	463	411	455	275	212	165	122	78	68	93	103	86
9th	2,593	2,563	2,803	2,838	2,873	2,638	2,465	2,532	2,167	1,630	1,328	1,419	1,363	1,481	1,392
10th	2,547	2,640	2,820	2,842	2,717	2,673	2,502	2,567	2,484	2,028	1,750	1,762	1,847	1,827	1,825
11th	2,177	2,521	2,752	2,561	2,454	2,620	2,315	2,447	2,110	1,958	1,620	1,646	1,705	1,714	1,755
12th	1,855	1,821	2,056	2,055	1,971	2,187	1,922	1,808	1,780	1,485	1,403	1,336	1,566	1,307	1,203
(9-12)	9,172	9,545	10,431	10,296	10,015	10,118	9,204	9,354	8,541	7,101	6,101	6,163	6,481	6,329	6,175
(7-12)	9,942	10,387	11,248	11,040	10,643	10,836	9,633	9,666	8,779	7,251	6,219	6,261	6,609	6,462	6,297

Table 1b: Dropout Membership by Grade															
	1993	1994	1995	1996	1997	1998	1999*	2000	2001	2002	2003	2004	2005	2006	2007
7th	52,224	51,634	51,334	50,608	49,438	49,959	47,994	48,497	47,493	49,163	50,268	51,344	50,618	50,136	49,172
8th	50,280	51,180	51,172	50,101	49,835	49,649	48,844	47,764	47,478	47,199	48,932	50,184	51,117	50,692	50,290
9th	53,485	54,362	56,168	55,639	55,718	55,444	54,455	55,354	53,687	53,878	53,537	54,730	56,637	57,753	57,258
10th	48,275	48,721	48,727	48,575	49,037	49,096	48,199	46,783	47,776	47,077	47,743	47,640	48,331	50,295	51,558
11th	40,991	44,060	43,154	42,447	43,447	43,457	42,986	42,812	41,230	42,278	42,303	42,361	42,582	43,750	45,490
12th	38,545	38,677	40,663	39,522	40,351	41,445	38,793	38,584	38,164	37,290	38,901	39,025	39,075	39,151	40,232
(9-12)	181,296	185,820	188,712	186,183	188,553	189,442	184,433	183,533	180,857	180,523	182,484	183,756	186,625	190,949	194,538
(7-12)	283,800	288,634	291,218	286,892	287,826	289,050	281,271	279,794	275,828	276,885	281,684	285,284	288,360	291,777	294,000

*Prior to 1998-99, if a student failed to return to school by October 1st, that student was considered a dropout for the past year and the grade which they had completed. Beginning in 1998-99, a student who failed to return to school by October 1st was considered a dropout for the grade and year for which they failed to return. Also beginning in 1998-99, dropout membership was adjusted to equal fall membership. These adjustments were required to be consistent with the National Center for Education Statistics' (NCES) dropout definition.

Table 1c & Table 1d: Male\Female Dropouts and Membership by Grade 1999-2007

Table 1c: Male Dropouts and Membership by Grade										
	Male 1999		Male 2000		Male 2001		Male 2002		Male 2003	
	Dropouts	Membership	Dropouts	Membership	Dropouts	Membership	Dropouts	Membership	Dropouts	Membership
7th	97	24,940	64	25,071	48	24,518	17	25,482	30	25,992
8th	158	25,353	133	24,733	94	24,369	73	24,216	48	25,165
9th	1,581	28,701	1,639	29,605	1,428	28,440	1,002	28,422	873	28,201
10th	1,534	24,725	1,553	23,929	1,535	24,826	1,258	24,353	1,095	24,594
11th	1,319	21,370	1,439	21,507	1,292	20,536	1,176	21,389	918	21,381
12th	1,061	18,935	1,043	18,949	998	18,860	842	18,268	769	19,398
(9-12)	5,495	93,731	5,674	93,990	5,253	92,662	4,278	92,432	3,655	93,574
(7-12)	5,750	144,024	5,871	143,794	5,395	141,549	4,368	142,130	3,733	144,731

	Male 2004		Male 2005		Male 2006		Male 2007	
	Dropouts	Membership	Dropouts	Membership	Dropouts	Membership	Dropouts	Membership
7th	22	26,431	20	26,426	16	25,905	25	25,471
8th	39	25,843	50	26,281	59	26,350	49	25,826
9th	894	28,864	868	29,825	962	30,272	897	30,267
10th	1,059	24,533	1,109	25,015	1,099	25,822	1,113	26,246
11th	956	21,276	1,000	21,444	1,014	22,035	1,025	22,774
12th	771	19,328	902	19,288	740	19,346	624	19,954
(9-12)	3,680	94,001	3,879	95,572	3,815	97,475	3,659	99,241
(7-12)	3,741	146,275	3,949	148,279	3,890	149,730	3,733	150,538

Table 1d: Female Dropouts and Membership by Grade										
	Female 1999		Female 2000		Female 2001		Female 2002		Female 2003	
	Dropouts	Membership	Dropouts	Membership	Dropouts	Membership	Dropouts	Membership	Dropouts	Membership
7th	57	23,054	36	23,426	25	22,975	11	23,681	10	24,276
8th	117	23,491	79	23,031	71	23,109	49	22,983	30	23,767
9th	884	25,754	893	25,749	739	25,247	628	25,456	455	25,336
10th	968	23,474	1,014	22,854	949	22,950	770	22,724	655	23,149
11th	996	21,616	1,008	21,305	818	20,694	782	20,889	702	20,922
12th	861	19,858	765	19,635	782	19,304	643	19,022	634	19,503
(9-12)	3,709	90,702	3,680	89,543	3,288	88,195	2,823	88,091	2,446	88,910
(7-12)	3,883	137,247	3,795	136,000	3,384	134,279	2,883	134,755	2,486	136,953

	Female 2004		Female 2005		Female 2006		Female 2007	
	Dropouts	Membership	Dropouts	Membership	Dropouts	Membership	Dropouts	Membership
7th	8	24,913	15	24,192	14	24,231	11	23,701
8th	29	24,341	43	24,836	44	24,342	37	24,464
9th	525	25,866	495	26,812	519	27,481	495	26,991
10th	703	23,107	738	23,316	728	24,473	712	25,312
11th	690	21,085	705	21,138	700	21,715	730	22,716
12th	565	19,697	664	19,787	567	19,805	579	20,278
(9-12)	2,483	89,755	2,602	91,053	2,514	93,474	2,516	95,297
(7-12)	2,520	139,009	2,660	140,081	2,572	142,047	2,564	143,462

Note: 1999 was the first year dropout data was available by gender.
 *** Data not reported when membership in any category is below 100.

Table 1e, Table 1f & Table 1g: Number of Dropouts and Membership by Ethnicity and Grade 1999, 2000 & 2001

Table 1e: Dropouts and Membership by Ethnicity and Grade 1999												
	White		African American		Hispanic		Asian		American Indian		Other	
	Dropouts	Membership	Dropouts	Membership	Dropouts	Membership	Dropouts	Membership	Dropouts	Membership	Dropouts	Membership
7th	115	42,020	24	4,521	8	273	1	204	***	***	6	934
8th	227	43,325	36	4,208	7	254	1	213	***	***	4	804
9th	2,085	48,007	332	5,338	21	296	7	260	***	***	19	504
10th	2,093	42,801	372	4,490	17	265	12	206	***	***	7	382
11th	2,020	38,565	257	3,617	17	195	8	219	***	***	13	360
12th	1,705	34,977	199	3,132	13	189	0	202	***	***	5	261
(9-12)	7,903	164,350	1,160	16,577	68	945	27	887	2	167	44	1,507
(7-12)	8,245	249,695	1,220	25,306	83	1,472	29	1,304	2	249	54	3,245

Table 1f: Dropouts and Membership by Ethnicity and Grade 2000												
	White		African American		Hispanic		Asian		American Indian		Other	
	Dropouts	Membership	Dropouts	Membership	Dropouts	Membership	Dropouts	Membership	Dropouts	Membership	Dropouts	Membership
7th	77	42,878	18	4,654	3	302	1	262	***	***	1	342
8th	178	42,183	28	4,676	1	292	1	239	***	***	4	332
9th	2,085	48,732	397	5,513	28	385	8	267	***	***	12	408
10th	2,158	41,540	365	4,322	26	282	6	280	***	***	9	317
11th	2,064	38,182	359	3,819	11	271	4	234	***	***	9	269
12th	1,594	34,742	190	3,122	10	190	5	225	***	***	9	278
(9-12)	7,901	163,196	1,311	16,776	75	1,128	23	1,006	5	155	39	1,272
(7-12)	8,156	248,257	1,357	26,106	79	1,722	25	1,507	5	256	44	1,946

Table 1g: Dropouts and Membership by Ethnicity and Grade 2001												
	White		African American		Hispanic		Asian		American Indian		Other	
	Dropouts	Membership	Dropouts	Membership	Dropouts	Membership	Dropouts	Membership	Dropouts	Membership	Dropouts	Membership
7th	51	41,629	16	4,684	2	396	0	306	***	***	2	391
8th	135	41,966	23	4,358	4	361	1	350	0	104	2	339
9th	1,781	46,953	324	5,499	38	446	13	348	***	***	7	348
10th	2,120	42,396	307	4,377	25	340	13	325	***	***	11	271
11th	1,782	36,671	291	3,673	22	265	8	325	***	***	6	251
12th	1,539	34,312	215	3,089	9	247	7	261	***	***	8	204
(9-12)	7,222	160,332	1,137	16,638	94	1,298	41	1,259	17	256	32	1,074
(7-12)	7,408	243,927	1,176	25,680	100	2,055	42	1,915	19	447	36	1,804

Note: 1999 was the first year dropout data was available by ethnicity.

*** Data not reported when membership in any category is below 100.

Table 1h, Table 1i & Table 1j: Number of Dropouts and Membership by Ethnicity and Grade 2002, 2003 & 2004

Table 1h: Dropouts and Membership by Ethnicity and Grade 2002												
	White		African American		Hispanic		Asian		American Indian		Other	
	Dropouts	Membership	Dropouts	Membership	Dropouts	Membership	Dropouts	Membership	Dropouts	Membership	Dropouts	Membership
7th	23	42,855	5	4,932	0	481	0	322	0	117	0	456
8th	94	41,344	20	4,589	5	447	0	321	1	105	2	393
9th	1,349	46,913	244	5,565	22	485	6	383	2	134	7	398
10th	1,696	41,309	289	4,597	28	433	7	344	***	***	8	330
11th	1,689	37,658	228	3,580	21	339	4	337	***	***	10	306
12th	1,271	33,161	175	3,217	19	253	12	321	***	***	11	289
(9-12)	6,005	159,041	936	16,959	90	1,510	29	1,385	5	305	36	1,323
(7-12)	6,122	243,240	961	26,480	95	2,438	29	2,028	6	527	38	2,172

Table 1i: Dropouts and Membership by Ethnicity and Grade 2003												
	White		African American		Hispanic		Asian		American Indian		Other	
	Dropouts	Membership	Dropouts	Membership	Dropouts	Membership	Dropouts	Membership	Dropouts	Membership	Dropouts	Membership
7th	30	43,825	10	5,077	0	582	0	337	***	***	0	355
8th	58	42,669	13	4,903	5	534	0	389	1	101	1	336
9th	1,102	46,378	193	5,648	21	638	6	403	***	***	4	372
10th	1,478	41,777	228	4,722	28	484	7	416	***	***	7	256
11th	1,400	37,352	185	3,896	19	406	9	372	***	***	7	222
12th	1,195	34,659	176	3,308	18	323	6	363	***	***	6	200
(9-12)	5,175	160,166	782	17,574	86	1,851	28	1,554	6	289	24	1,050
(7-12)	5,263	246,660	805	27,554	91	2,967	28	2,280	7	482	25	1,741

Table 1j: Dropouts and Membership by Ethnicity and Grade 2004												
	White		African American		Hispanic		Asian		American Indian		Other	
	Dropouts	Membership	Dropouts	Membership	Dropouts	Membership	Dropouts	Membership	Dropouts	Membership	Dropouts	Membership
7th	25	44,283	3	5,423	1	692	1	384	0	107	0	455
8th	55	43,698	8	5,008	4	641	1	339	0	117	0	381
9th	1,189	47,253	175	5,834	29	702	9	406	6	140	11	395
10th	1,444	41,424	272	4,768	27	569	6	432	7	103	6	344
11th	1,380	37,306	222	3,870	26	431	9	418	***	***	7	250
12th	1,141	34,248	161	3,747	18	394	4	360	***	***	6	210
(9-12)	5,154	160,231	830	18,219	100	2,096	28	1,616	21	395	30	1,199
(7-12)	5,234	248,212	841	28,650	105	3,429	30	2,339	21	619	30	2,035

Note: 1999 was the first year dropout data was available by ethnicity.

*** Data not reported when membership in any category is below 100.

Table 1k: Number of Dropouts and Membership by Ethnicity and Grade 2005, 2006 & 2007

Table 1k: Dropouts and Membership by Ethnicity and Grade 2005												
	White		African American		Hispanic		Asian		American Indian		Other	
	Dropouts	Membership	Dropouts	Membership	Dropouts	Membership	Dropouts	Membership	Dropouts	Membership	Dropouts	Membership
7th	23	43,245	8	5,436	3	861	1	439	***	***	0	539
8th	67	44,072	20	5,342	4	778	0	366	***	***	0	464
9th	1,099	48,665	210	6,122	38	890	1	395	0	111	16	454
10th	1,445	41,810	343	4,952	36	672	11	413	***	***	11	396
11th	1,391	37,159	269	4,052	26	551	7	426	***	***	10	340
12th	1,260	34,312	255	3,592	29	424	4	420	***	***	12	260
(9-12)	5,195	161,946	1,077	18,718	129	2,537	23	1,654	9	320	49	1,450
(7-12)	5,285	249,263	1,105	29,496	136	4,176	24	2,459	11	513	49	2,453

Table 1i: Dropouts and Membership by Ethnicity and Grade 2006												
	White		African American		Hispanic		Asian		American Indian		Other	
	Dropouts	Membership	Dropouts	Membership	Dropouts	Membership	Dropouts	Membership	Dropouts	Membership	Dropouts	Membership
7th	18	42,917	6	5,181	4	905	1	388	***	***	1	660
8th	77	43,265	16	5,435	7	931	2	457	***	***	1	522
9th	1,141	49,054	262	6,591	56	993	4	436	***	***	16	587
10th	1,418	43,435	343	5,095	43	779	1	419	***	***	18	483
11th	1,352	37,921	275	4,316	53	583	11	449	***	***	22	413
12th	1,073	34,104	196	3,730	23	508	3	409	***	***	11	341
(9-12)	4,984	164,514	1,076	19,732	175	2,863	19	1,713	8	303	67	1,824
(7-12)	5,079	250,696	1,098	30,348	186	4,699	22	2,558	8	470	69	3,006

Table 1i: Dropouts and Membership by Ethnicity and Grade 2007												
	White		African American		Hispanic		Asian		American Indian		Other	
	Dropouts	Membership	Dropouts	Membership	Dropouts	Membership	Dropouts	Membership	Dropouts	Membership	Dropouts	Membership
7th	26	41,858	8	5,099	1	988	1	435	***	***	0	719
8th	56	42,952	18	5,189	10	980	0	418	***	***	2	675
9th	1,066	48,247	261	6,679	42	1,147	4	488	***	***	19	627
10th	1,434	43,962	297	5,649	65	872	6	453	***	***	21	557
11th	1,426	39,441	250	4,402	46	710	7	433	***	***	24	447
12th	977	34,904	178	3,927	25	532	5	425	***	***	16	391
(9-12)	4,903	166,554	986	20,657	178	3,261	22	1,799	6	245	80	2,022
(7-12)	4,985	251,364	1,012	30,945	189	5,229	23	2,652	6	394	82	3,416

Note: 1999 was the first year dropout data was available by ethnicity.

*** Data not reported when membership in any category is below 100.

Figure 2: Retention Rates by Grade 1993 - 2007

	1993	1994	1995	1996	1997	1998	1999	2000	2001	2002	2003	2004	2005	2006	2007
4th	0.68	0.64	1.06	1.05	1.15	1.23	1.34	1.36	1.15	0.97	0.74	0.62	0.52	0.47	0.55
5th	0.61	0.51	0.72	0.82	0.80	0.87	1.23	0.85	0.71	0.52	0.54	0.41	0.47	0.34	0.36
6th	1.47	1.57	1.89	1.75	1.66	2.05	1.99	1.95	2.02	1.94	1.80	1.58	1.39	1.16	0.99
7th	2.26	2.73	2.69	2.65	2.60	2.82	2.75	2.54	2.23	1.97	1.76	1.57	1.49	0.95	1.00
8th	1.37	1.73	1.61	1.89	1.81	1.94	1.99	1.61	1.48	1.37	1.36	1.13	1.10	0.85	0.80
9th	7.86	8.76	10.65	10.68	10.28	10.41	12.55	11.84	11.17	10.81	10.03	10.79	10.81	9.64	10.02
10th	5.52	5.70	6.89	6.79	6.49	6.74	6.88	8.03	7.51	7.59	7.50	6.91	7.18	6.66	6.78
11th	3.40	3.35	3.95	4.06	3.74	4.33	4.25	4.38	4.35	4.32	4.30	4.11	4.13	3.86	3.73
12th	2.59	2.23	2.26	2.17	2.26	2.06	2.30	2.46	2.10	2.31	2.47	2.11	2.00	1.43	1.75
Total	2.84	3.05	3.59	3.62	3.52	3.71	4.03	3.97	3.67	3.55	3.38	3.27	3.30	2.92	3.00

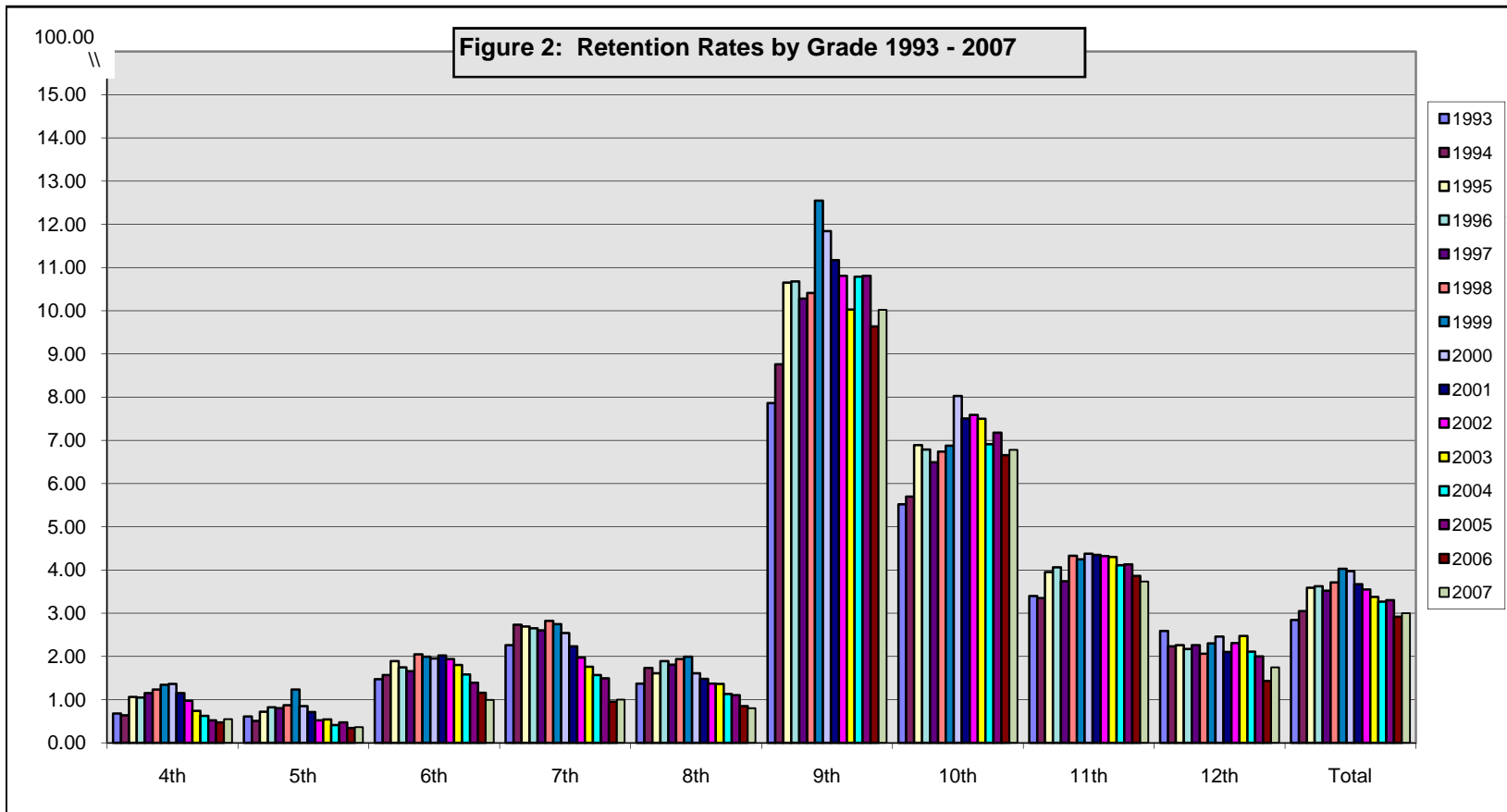


Table 2a & Table 2b: Number of Retentions and Membership by Grade 1993 - 2007

Table 2a: Retentions by Grade															
	1993	1994	1995	1996	1997	1998	1999	2000	2001	2002	2003	2004	2005	2006	2007
4th	338	315	513	492	538	570	643	672	570	480	357	298	246	226	261
5th	307	256	351	398	374	406	567	407	348	260	266	198	226	162	173
6th	746	794	950	857	807	967	943	913	981	967	913	792	688	564	481
7th	1,176	1,399	1,374	1,335	1,282	1,402	1,310	1,214	1,052	964	881	800	750	472	488
8th	684	874	813	939	897	955	963	760	699	645	665	563	556	429	401
9th	4,001	4,538	5,682	5,637	5,432	5,496	6,501	6,176	5,697	5,540	5,106	5,615	5,832	5,307	5,487
10th	2,525	2,622	3,160	3,105	3,002	3,129	3,143	3,553	3,396	3,427	3,408	3,117	3,322	3,206	3,338
11th	1,317	1,386	1,596	1,616	1,532	1,766	1,719	1,759	1,694	1,732	1,718	1,636	1,664	1,604	1,597
12th	930	804	850	782	837	789	867	914	783	856	950	790	756	545	689
Total	12,024	12,988	15,289	15,161	14,701	15,480	16,656	16,368	15,220	14,871	14,264	13,809	14,040	12,515	12,915

Table 2b: Retention Membership by Grade															
	1993	1994	1995	1996	1997	1998	1999	2000	2001	2002	2003	2004	2005	2006	2007
4th	49,638	48,939	48,471	46,652	46,860	46,309	48,128	49,247	49,719	49,245	48,487	47,755	47,749	47,628	47,843
5th	50,003	49,819	48,797	48,347	46,684	46,920	46,248	48,022	49,053	49,934	49,392	48,689	48,242	48,239	47,922
6th	50,807	50,509	50,296	48,999	48,588	47,155	47,360	46,750	48,657	49,960	50,857	50,049	49,442	48,808	48,779
7th	51,942	51,333	51,070	50,321	49,219	49,696	47,654	47,760	47,238	48,922	50,052	51,014	50,451	49,944	49,022
8th	49,788	50,588	50,454	49,605	49,422	49,193	48,400	47,068	47,259	47,015	48,731	49,954	50,846	50,550	50,091
9th	50,883	51,790	53,353	52,795	52,820	52,781	51,818	52,154	51,001	51,237	50,910	52,039	53,975	55,056	54,760
10th	45,722	46,037	45,895	45,725	46,261	46,393	45,658	44,261	45,209	45,147	45,454	45,129	46,296	48,163	49,256
11th	38,733	41,338	40,372	39,842	40,911	40,785	40,484	40,169	38,987	40,130	39,974	39,805	40,261	41,545	42,798
12th	35,947	36,093	37,692	35,957	37,094	38,330	37,698	37,110	37,257	37,084	38,416	37,392	37,789	38,117	39,405
Total	423,463	426,446	426,400	418,243	417,859	417,562	413,448	412,541	414,380	418,674	422,273	421,826	425,051	428,050	429,876

Figure 3: Transition to Adult Life Percentages 1993 - 2007

	1993	1994	1995	1996	1997	1998	1999	2000	2001	2002	2003	2004	2005	2006	2007
College in KY	44.1	43.8	43.6	44.4	44.4	45.7	46.0	46.4	47.6	48.4	48.8	49.3	48.5	49.6	48.7
College out of state	5.7	6.2	6.3	6.5	6.6	6.8	6.7	6.8	6.5	5.9	6.0	5.4	5.5	5.3	5.6
Voc./Tech.	4.1	4.3	4.0	4.6	4.8	4.9	4.3	4.6	5.0	5.1	4.9	4.7	5.4	5.2	4.9
Military	3.7	3.3	3.1	2.9	3.1	2.8	2.7	2.7	2.9	2.8	2.9	2.6	2.2	2.4	2.4
Employed	30.2	30.8	31.1	31.0	30.4	28.9	29.3	28.7	26.9	26.7	26.7	27.5	27.5	27.3	27.4
Work/School	4.8	5.5	5.6	5.9	5.9	5.9	6.3	6.2	6.1	6.8	6.7	6.4	7.0	6.2	6.8
No Success	7.4	6.0	6.3	4.7	4.8	5.0	4.8	4.7	4.9	4.3	4.0	4.0	3.9	3.9	4.3

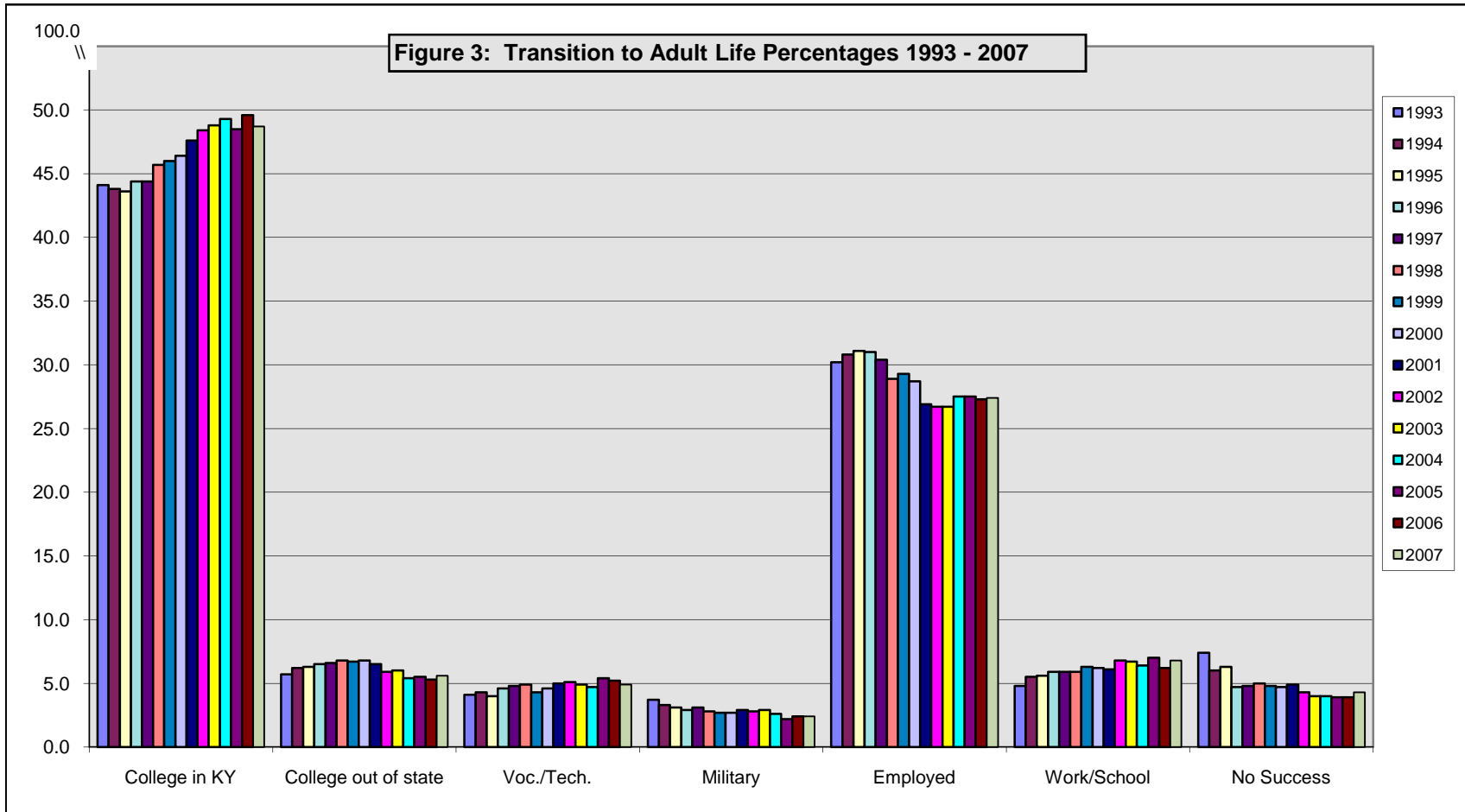


Table 3a & Table 3b: Transition to Adult Life Data & Graduates by Gender and Ethnicity 1999-2007

Table 3a: Transition to Adult Life Data															
	1993	1994	1995	1996	1997	1998	1999	2000	2001	2002	2003	2004	2005	2006	2007
College in KY	16,024	15,679	16,379	16,256	16,417	17,046	17,086	17,091	17,508	17,592	18,379	18,630	18,500	19,122	19,335
College out of KY	2,079	2,220	2,373	2,381	2,443	2,530	2,479	2,509	2,392	2,141	2,256	2,055	2,106	2,052	2,215
Voc./Tech.	1,501	1,526	1,519	1,669	1,770	1,822	1,604	1,677	1,837	1,852	1,862	1,793	2,043	2,004	1,946
Military	1,361	1,194	1,172	1,079	1,140	1,039	1,009	1,007	1,081	1,026	1,096	996	837	920	950
Employed	10,974	11,037	11,680	11,368	11,255	10,789	10,882	10,564	9,904	9,711	10,075	10,381	10,493	10,513	10,886
Work/School	1,728	1,971	2,109	2,148	2,174	2,196	2,352	2,267	2,249	2,471	2,509	2,420	2,677	2,400	2,702
No Success	2,693	2,150	2,356	1,740	1,794	1,848	1,767	1,716	1,799	1,573	1,495	1,512	1,468	1,496	1,689
Graduates	36,360	35,777	37,588	36,641	36,993	37,270	37,179	36,831	36,770	36,366	37,672	37,787	38,124	38,524	39,666
Transition Rate	92.59	93.99	93.73	95.25	95.15	95.04	95.25	95.34	95.11	95.67	96.03	96.00	96.15	96.07	95.70

Table 3b: Graduates by Gender and Ethnicity															
	1993	1994	1995	1996	1997	1998	1999	2000	2001	2002	2003	2004	2005	2006	2007
Male	# 17,728	17,694	18,206	18,138	17,802	18,060	17,942	17,846	17,866	17,641	18,640	18,667	18,671	18,895	19,738
	% 48.8	49.5	48.4	49.5	48.1	48.5	48.3	48.5	48.6	48.5	49.5	49.4	48.9	49.1	49.7
Female	# 18,314	17,914	19,030	18,469	19,175	19,210	19,237	18,985	18,904	18,725	19,032	19,088	19,518	19,612	19,965
	% 50.4	50.1	50.6	50.4	51.8	51.5	51.7	51.5	51.4	51.5	50.5	50.6	51.1	50.9	50.3
No gender	# 318	169	352	34	16	0	0	0	0	0	0	0	0	0	0
	% 0.9	0.5	0.9	0.1	0.0	0.0	0.0	0.0	0.0	0.0	0.0	0.0	0.0	0.0	0.0
White	# 32,367	32,066	33,795	32,955	33,218	33,607	33,602	32,938	32,927	32,385	33,565	33,170	33,591	33,739	34,490
	% 89.0	89.6	89.9	89.9	89.8	90.2	90.4	89.4	89.5	89.1	89.1	87.9	88.0	87.6	86.9
African American	# 2,802	2,735	2,923	2,989	3,048	3,007	3,020	2,902	2,994	3,158	3,123	3,387	3,482	3,548	3,728
	% 7.7	7.6	7.8	8.2	8.2	8.1	8.1	7.9	8.1	8.7	8.3	9.0	9.1	9.2	9.4
Hispanic	# ***	130	146	143	150	171	***	197	231	249	385	586	398	479	512
	% ***	0.4	0.4	0.4	0.4	0.5	***	0.5	0.6	0.7	1.0	1.6	1.0	1.2	1.3
Asian	# 160	250	249	260	238	224	213	239	266	350	329	347	403	384	387
	% 0.4	0.7	0.7	0.7	0.6	0.6	0.6	0.6	0.7	1.0	0.9	0.9	1.1	1.0	1.0
American Indian	# ***	***	***	***	***	***	108	***	***	***	***	***	***	***	200
	% ***	***	***	***	***	***	0.3	***	***	***	***	***	***	***	0.5
Other	# ***	257	171	242	291	261	146	528	312	193	225	215	256	298	356
	% ***	0.7	0.5	0.7	0.8	0.7	0.4	1.4	0.8	0.5	0.6	0.6	0.7	0.8	0.9
No ethnicity	# 859	339	304	52	48	0	0	0	0	0	0	0	0	0	0
	% 2.4	0.9	0.8	0.1	0.1	0.0	0.0	0.0	0.0	0.0	0.0	0.0	0.0	0.0	0.0
Graduates	36,360	35,777	37,588	36,641	36,993	37,270	37,179	36,831	36,770	36,366	37,672	37,787	38,124	38,524	39,666

Note: The American Indian category was not collected from 1993-1998.
 *** Data not reported when membership in any category below 100.

Figure 4: Attendance Rates by Grade 1993-2007

	1993	1994	1995	1996	1997	1998	1999	2000	2001	2002	2003	2004	2005	2006	2007
KG	94.19	94.33	94.08	94.03	93.76	93.86	93.66	93.85	93.84	94.30	94.14	94.12	94.21	94.50	94.16
Primary	95.68	95.83	95.54	95.46	95.27	95.24	95.02	95.16	95.15	95.38	95.32	95.36	95.36	95.58	95.24
4th	96.14	96.29	96.03	96.04	95.86	95.81	95.47	95.68	95.58	95.72	95.62	95.75	95.76	95.99	95.69
5th	96.03	96.17	95.93	95.89	95.77	95.64	95.40	95.57	95.52	95.61	95.55	95.58	95.65	95.91	95.62
6th	95.32	95.37	95.06	95.11	94.90	94.94	94.66	95.02	94.80	94.93	94.78	94.83	94.95	95.34	95.03
7th	94.62	94.62	94.27	94.31	94.22	94.20	94.08	94.45	94.34	94.49	94.50	94.41	94.51	94.88	94.59
8th	94.27	94.26	93.78	93.84	93.65	93.73	93.44	93.94	93.87	94.17	94.01	94.01	94.03	94.36	94.01
9th	93.33	93.11	92.40	92.53	92.19	91.83	92.12	92.48	92.53	93.02	93.06	92.85	92.99	93.23	92.62
10th	93.66	93.36	92.89	93.09	92.87	92.49	92.64	93.17	93.01	93.39	93.21	93.10	93.17	93.50	92.83
11th	93.34	93.26	92.78	93.03	92.84	92.50	92.50	92.77	92.93	93.14	92.98	92.73	92.82	93.10	92.59
12th	92.86	92.69	92.45	92.57	92.10	91.72	91.44	91.79	91.66	92.12	91.72	91.46	91.44	91.96	91.13
Total	94.73	94.71	94.32	94.35	94.13	94.03	93.89	94.19	94.15	94.43	94.31	94.26	94.31	94.60	94.18

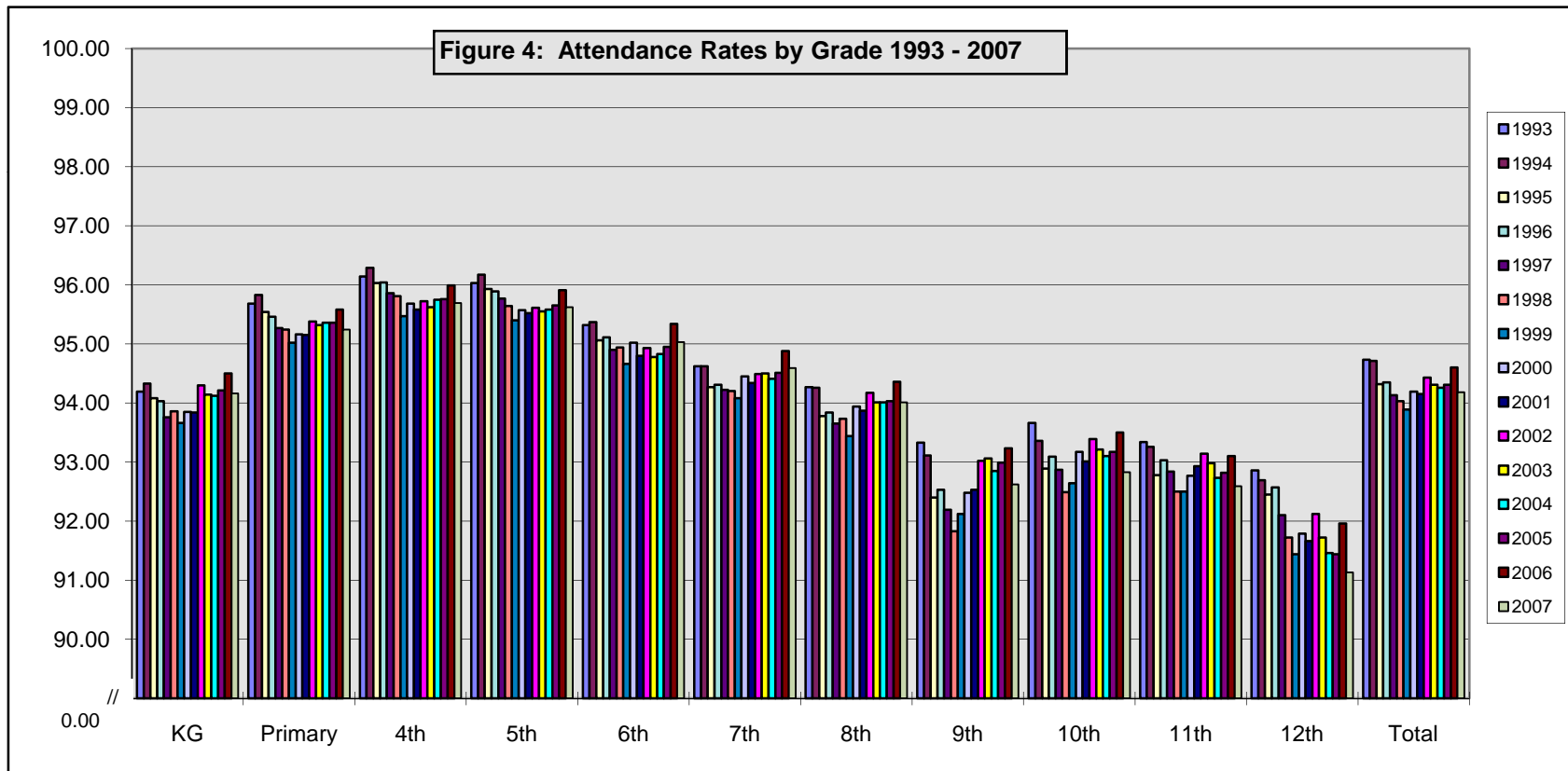
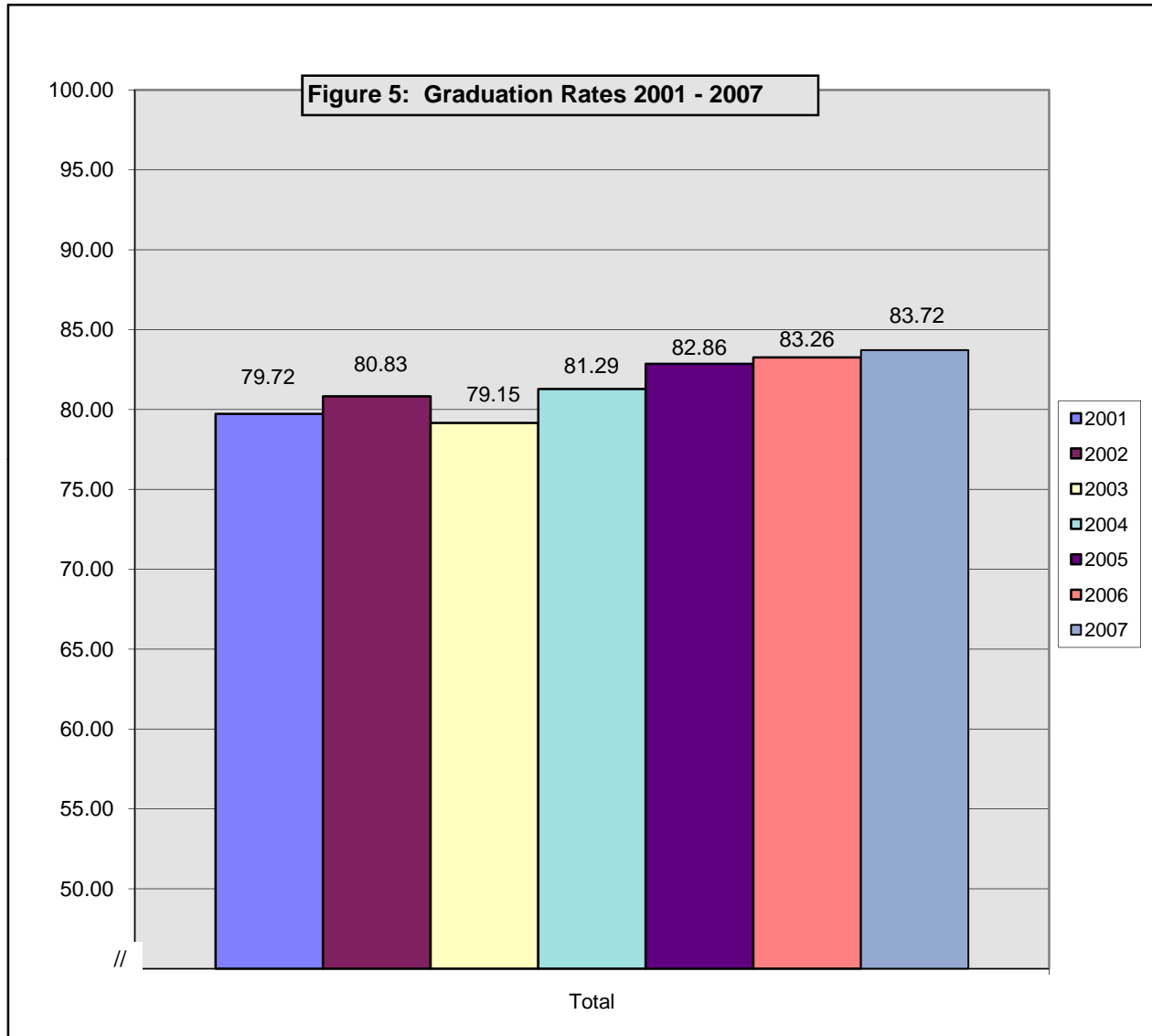


Figure 5: Graduation Rates 2001-2007

	2001	2002	2003	2004	2005	2006	2007
Total	79.72	80.83	79.15	81.29	82.86	83.26	83.72



Note: 2001 was the first year graduation rate was available.