



Update on FCPS Construction/Renovation Projects

December 2010

Leestown Middle – Renovation

- ▶ Architect: Lucas/Schwering Architects
- ▶ General Contractor: D.W. Wilburn, Inc.
- ▶ Substantial Completion Date: November, 2010
- ▶ GC Contract Sum: \$11,182,000
- ▶ Total Project Cost: \$13,682,854
- ▶ Change Orders to Date (11): \$55,923
- ▶ Current Phase: 3, 4
- ▶ Estimated Completion: 95%



Leestown Middle – Renovation

Rendering of Final Façade



December 2010

Leestown Middle – Renovation

▶ **Work Completed in Last 30 Days:**

- ▶ Phase 3 new work/fit-up on-going.
- ▶ Phase 4 new work/fit-up on-going.
- ▶ Work on outstanding punch lists on-going.

▶ **Current Work Effort (December):**

- ▶ Phase 3 new work/fit-up to complete.
- ▶ Phase 4 new work/fit-up to complete.
- ▶ Bus loop work to commence during the Spring of 2011.



Leestown Middle – Renovation

Site Work



Boys Locker Room



Computer Room



Girls Locker Room



Leestown Middle – Renovation

FMD Classroom



Guidance Office



Health Classroom



Phase 3 Corridor



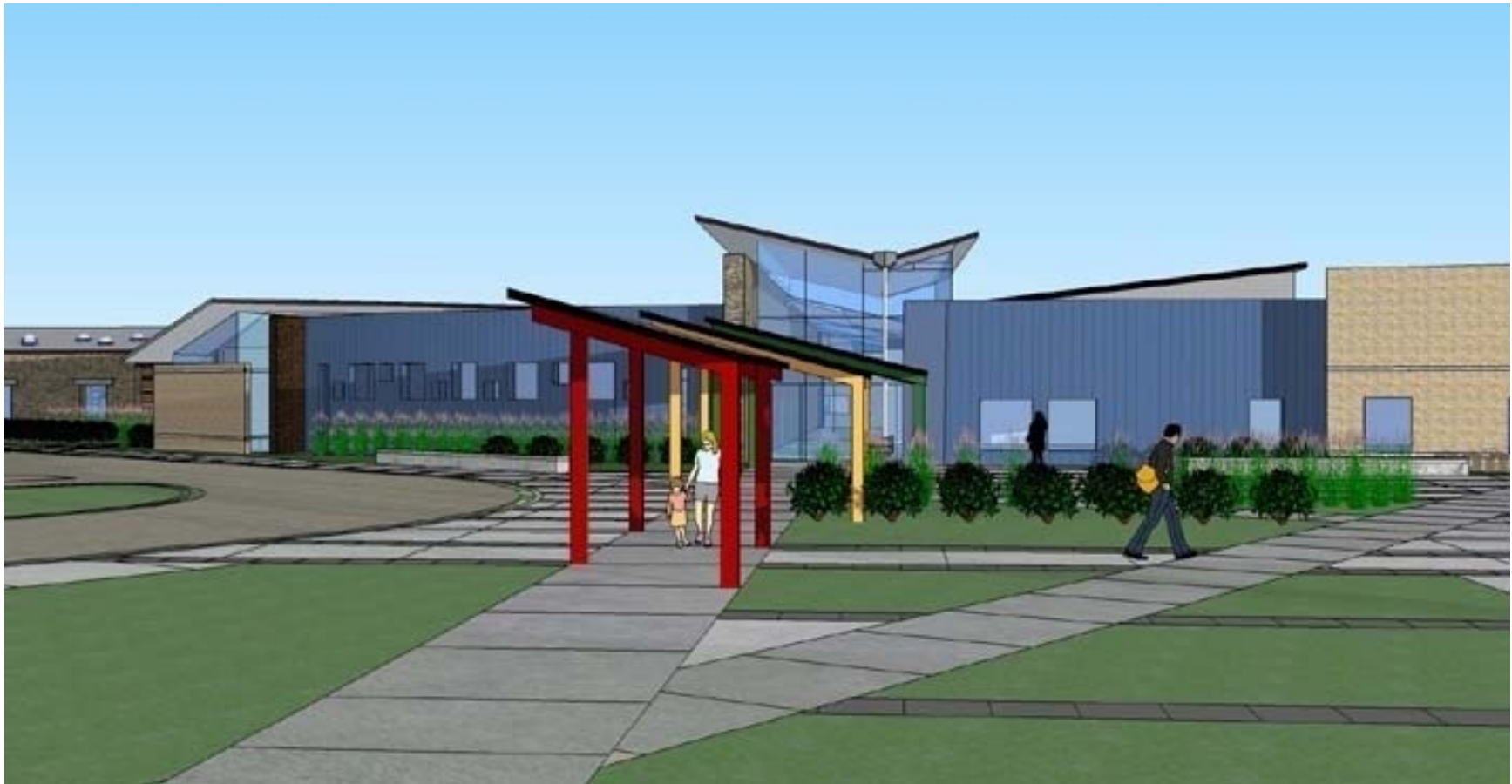
Wellington Elementary – New Construction

- ▶ Architect: GBBN Architects
- ▶ General Contractor: D.W. Wilburn, Inc.
- ▶ Substantial Completion Date: August 2011
- ▶ GC Contract Sum: \$13,566,000
- ▶ Total Project Cost: \$16,457,368
- ▶ Change Orders to Date (3): \$49,358
- ▶ Current Phase: Construction
- ▶ Estimated Completion: 56%



Wellington Elementary–New Construction

Rendering of Final Façade



December 2010

Wellington Elementary–New Construction

▶ **Work Completed to Date:**

- ▶ Base layer of Built up roof complete on Central Wing.
- ▶ Metal Roofs complete on East and West Wings.
- ▶ Acoustic decking installed in South Wing.

▶ **Current Work Effort (December):**

- ▶ Complete roofs on the South Wing.
- ▶ Install entry canopy structural steel.
- ▶ Begin first coat of interior finish paint in the West Wing.

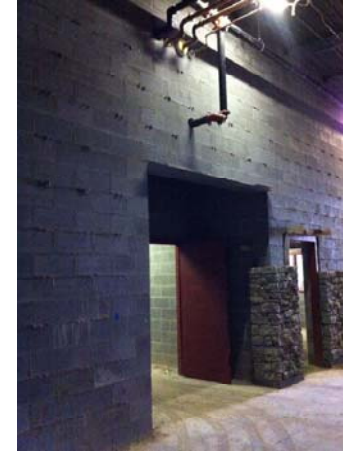


Wellington Elementary–New Construction

Spray Foam Insulation at Tops of Walls



Limestone in Main Corridor



Acoustic Decking in Main Entry



Mechanical Units on Roof



Wellington Elementary–New Construction

Base Layer of Built Up Roof



Roof Curbs for Solar Hot Water Panels



Metal Roof – South Corridor



FCPS Board and Staff Toured Job Site w/ GBBN and DWWI



December 2010

Locust Trace Agriscience Farm - Phase 2

- ▶ Architect: Tate.Hill.Jacobs: Architects
- ▶ General Contractor: Messer Construction Co.
- ▶ Substantial Completion Date: October 15, 2011
- ▶ GC Contract Sum: \$14,930,200
- ▶ Total Project Cost: \$18,011,353
- ▶ Change Orders to Date (5): \$296,504
- ▶ Current Phase: Construction
- ▶ Estimated Completion: 29%



Locust Trace Agriscience Farm – Phase 2

Rendering of Final Façade



ACADEMIC CLASSROOM BUILDING - NORTH ELEVATION



ARENA - SOUTH ELEVATION

December 2010

Locust Trace Agriscience Farm – Phase 2

Rendering of Final Façade



○ ACADEMIC CLASSROOM BUILDING - WEST ELEVATION



○ ARENA - WEST ELEVATION

Locust Trace Agriscience Farm - Phase 2

▶ **Work Completed to Date:**

- ▶ Phase I “Right of Way” Turning Lane remains on hold for approval by Ky. Dept. of Highways.
- ▶ Submittals/Shop Drawings being processed by Messer and received/reviewed by Consultants.
- ▶ Interior finishes being selected by consultants for FCPS review.
- ▶ Academic Bldg. ICF concrete pour 50% complete.
- ▶ Interior masonry cmu walls continue at Academic Bldg. with 75% complete.
- ▶ Underground utilities and sanitary leech fields ongoing.
- ▶ Roof joist and deck installation begun with 10% complete.
- ▶ Mezzanine floor joist and conc. floor begun with 50% complete.
- ▶ Geothermal laterals complete. Vault delivered and installation begun.
- ▶ Site water and electric underground begun.

Locust Trace Agriscience Farm - Phase 2

▶ **Current Work Effort (December):**

- ▶ Submittals/Shop Drawing review to continue.
- ▶ ICF and masonry walls to continue at Academic Bldg.
- ▶ Steel roof and floor joists installation to continue at Academic Bldg.
- ▶ Site utilities to complete.
- ▶ Masonry work to start at the Arena.
- ▶ Foundation work to start at the Greenhouse.



Locust Trace Agriscience Farm – Phase 2

Academic Bldg.



Academic Bldg. East End Entry



Academic Bldg. Main Corridor



Academic Bldg. From Bus Drop Off



Locust Trace Agriscience Farm – Phase 2

Academic Bldg. from Leestown Rd.



Academic Bldg. – Assembly Room



Aerial View – Typical Lab



Arena Looking West Across Horse Stalls



Yates Elementary -- Renovation

- ▶ Architect: Sherman Carter Barnhart Architects
- ▶ General Contractor: Messer Construction
- ▶ Substantial Completion Date: August 2011
- ▶ GC Contract Sum: \$9,009,000
- ▶ Total Project Cost: \$10,918,388
- ▶ Change Orders to Date (4): \$219,924
- ▶ Current Phase: I
- ▶ Estimated Completion: 40%



Yates Elementary -- Renovation

Rendering of Final Façade



December 2010

Yates Elementary -- Renovation

▶ **Work Completed to Date:**

- ▶ Started installation of drywall at Admin area.
- ▶ Started installation of metal stud framing.
- ▶ Started installation of tile within restrooms.
- ▶ Continuing installation of ceiling grid and light fixtures.
- ▶ Continuing painting at Phase I.
- ▶ Continuing hanging and finishing of drywall at Phase I.
- ▶ Complete installation of Brick veneer at West additions.



Yates Elementary -- Renovation

▶ **Current Work Effort (December):**

- ▶ Begin and finish installation of floor tile in Phase I classrooms.
- ▶ Begin and finish installation of ceiling tile.
- ▶ Complete painting at Phase I.
- ▶ Complete installation of Brick veneer at Admin area.
- ▶ Complete hanging and finishing of drywall at Phase I.
- ▶ Create Punch list for Phase I.



Yates Elementary -- Renovation

West Addition



Admin. Addition



Southwest Addition



Main Lobby Framing



Yates Elementary -- Renovation

Existing Classroom



Delivery of Casework/Cabinets



Tile in Girls' Restroom



Tile in Boys' Restroom



Tates Creek Middle -- Renovation

- ▶ Architect: Ross Tarrant Architects
- ▶ General Contractor: D.W. Wilburn, Inc.
- ▶ Substantial Completion Date: August 2011
- ▶ GC Contract Sum: \$15,614,500
- ▶ Total Project Cost: \$18,854,244
- ▶ Change Orders to Date (0): \$67,288
- ▶ Current Phase: I
- ▶ Estimated Completion: 25%



Tates Creek Middle -- Renovation

Rendering of Final Façade



December 2010

Tates Creek Middle -- Renovation

▶ **Work Completed to Date:**

- ▶ The brick has been removed from the future band room.
- ▶ CMU veneer column wrap has been installed in the cafeteria.
- ▶ The metal roof deck has been installed over the cafeteria, Tech Classroom and FCS popup.
- ▶ The lower level ceiling structure and upper Lobby floor slab have been completed.
- ▶ The gym lobby steel has started installation.
- ▶ The media center steel and cmu has begun.



Tates Creek Middle -- Renovation

▶ **Current Work Effort (December):**

- ▶ Structural steel will continue in the media center and main lobby.
- ▶ Cmu work on the new Administration area will continue.
- ▶ Existing parapet replacement will continue.
- ▶ Plumbing and electrical installation in the kitchen/cafeteria will continue.
- ▶ Installation of new storm system will continue.



Tates Creek Middle -- Renovation

Future Band Room



CMU Veneer Column Wrap -- Cafe



Metal Roof Deck



Upper Lobby Floor Slab



Tates Creek Middle -- Renovation

Lower Level Ceiling Structure



Gym Lobby Steel



Media Center Steel & CMU



Metal Roof Deck

