

BRIEFING PACKET

Nonacademic Data

**Dropout, Retention, Transition to Adult Life,
Attendance and Graduation Rates**

**1993 to 2009
State Totals**



June 1, 2010

KENTUCKY DEPARTMENT OF EDUCATION

Terry Holliday, Ph.D., Commissioner



	<u>Page</u>
Observations	1
<u>Dropout Rates</u>	
Figure 1a: Dropout Rates (Grades 9-12).....	2
Figure 1b: Dropout Rates by Grade	3
Figure 1c: Dropout Rates by Gender (Grades 9-12).....	4
Figure 1d: Dropout Rates by Ethnicity (Grades 9-12).....	5
Table 1a: Dropouts by Grade	6
Table 1b: Dropout Membership by Grade	6
Table 1c: Male Dropouts and Membership by Grade	7
Table 1d: Female Dropouts and Membership by Grade	7
Table 1e - 1n: Dropouts and Membership by Ethnicity and Grade 1999 - 2009	8
<u>Retention Rates</u>	
Figure 2: Retention Rates by Grade	12
Table 2a: Retentions by Grade	13
Table 2b: Retention Membership by Grade	13
<u>Transition to Adult Life</u>	
Figure 3: Transition to Adult Life Percentages	14
Table 3a: Transition to Adult Life Data	15
Table 3b: Graduates by Gender and Ethnicity	15
<u>Attendance Rates</u>	
Figure 4: Attendance Rates by Grade	16
<u>Graduation Rates</u>	
Figure 5: Graduation Rates	17
<u>Appendixes</u>	
Appendix A: Nonacademic Data Formulas	18
Appendix B: Kentucky Graduation Rate - Transition to a Cohort Model	

Observations

Dropout Rate (Grades 9-12)

- The high school dropout rate decreased from 3.29 in 2008 to 2.89 in 2009.
- The male dropout rate continues to be greater than the female dropout rate.
- The male dropout rate decreased from 3.77 in 2008 to 3.26 in 2009.
- The female dropout rate decreased from 2.79 in 2008 to 2.50 in 2009.
- The African American and Hispanic dropout rates continue to be greater than the White dropout rate.
- The White dropout rate decreased from 2.87 in 2008 to 2.60 in 2009.
- The African American dropout rate decreased from 6.14 in 2008 to 4.91 in 2009.
- The Hispanic dropout rate decreased from 6.07 in 2008 to 4.06 in 2009.

Retention Rate (Grades 4-12)

- The retention rate increased from 2.55 in 2008 to 2.75 in 2009.
- The 9th grade retention rate increased from 8.44 in 2008 to 8.82 in 2009 and continues to exceed the rates at other grade levels.

Transition to Adult Life

- The percent of graduates that were considered successful for transition to adult life slightly decreased from 95.27 in 2008 to 94.37 in 2009.
- The percent of graduates attending college in Kentucky increased from 49.7 in 2008 to 50.9 in 2009.

Attendance Rate

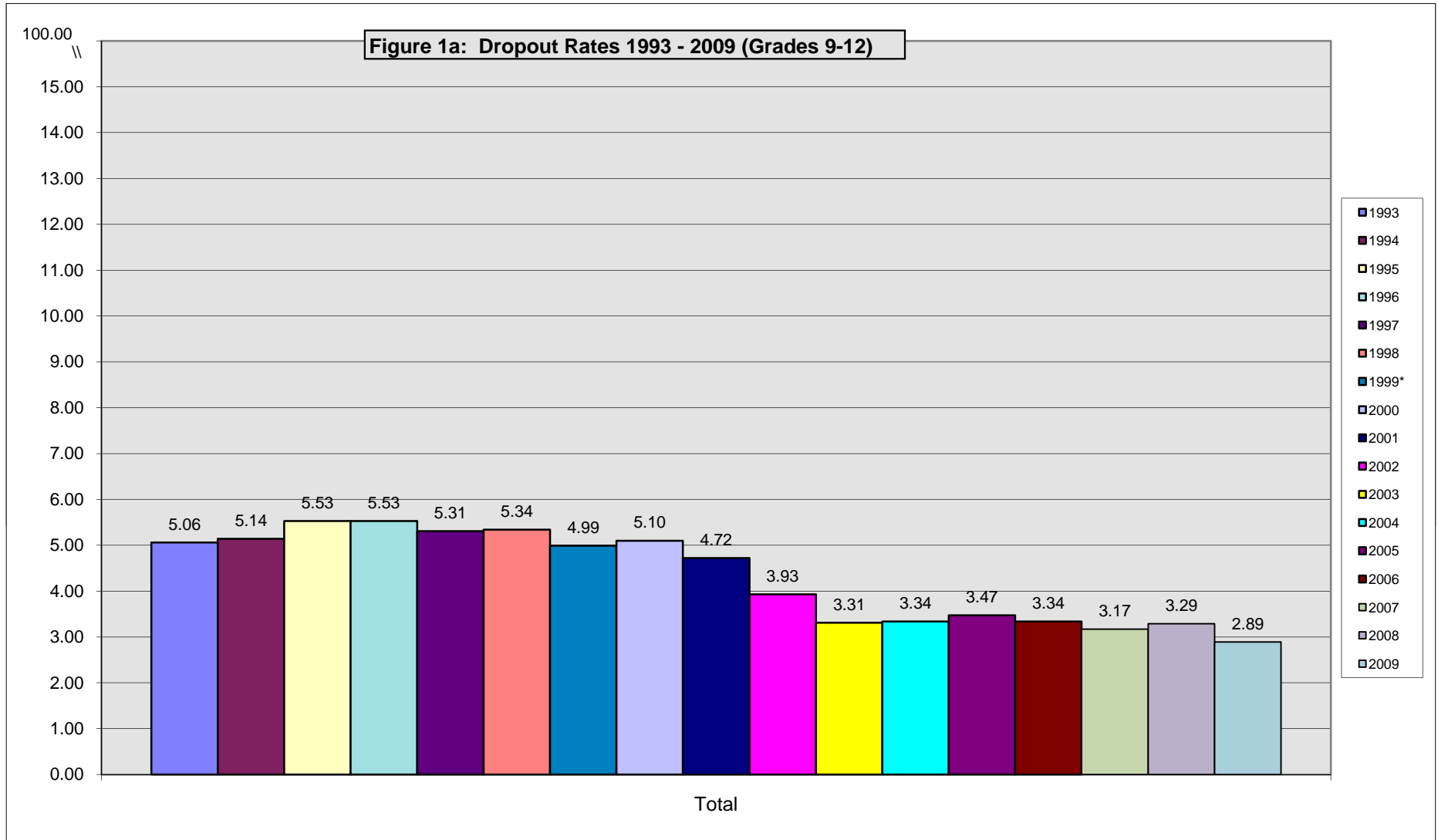
- The attendance rate slightly increased from 94.17 in 2008 to 94.18 in 2009.

Graduation Rate

- The graduation rate slightly decreased from 84.52 in 2008 to 83.91 in 2009.

Figure 1a: Dropout Rates 1993 - 2009 (Grades 9-12)

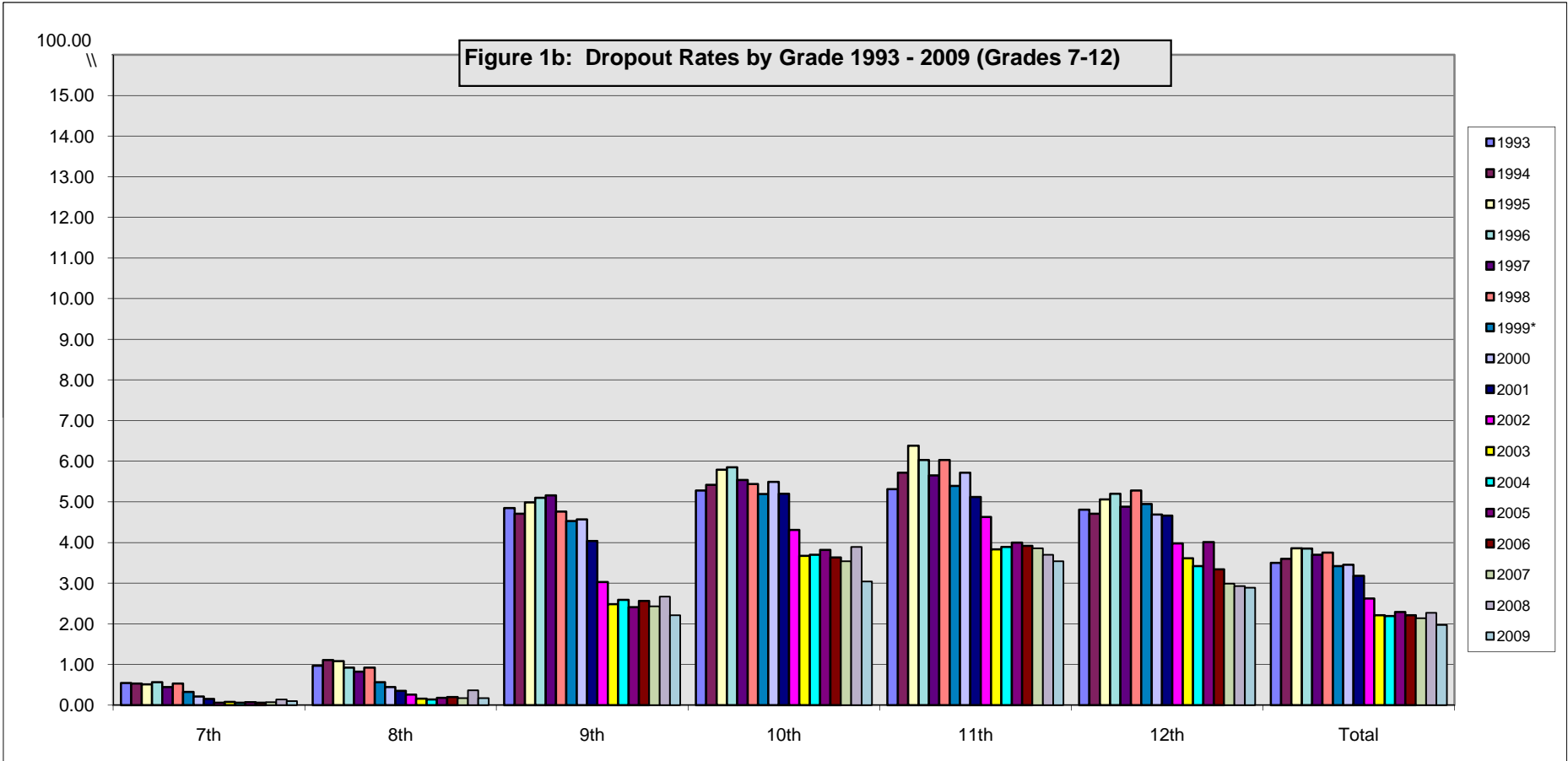
	1993	1994	1995	1996	1997	1998	1999*	2000	2001	2002	2003	2004	2005	2006	2007	2008	2009
Total	5.06	5.14	5.53	5.53	5.31	5.34	4.99	5.10	4.72	3.93	3.31	3.34	3.47	3.34	3.17	3.29	2.89



*Prior to 1998-99, if a student failed to return to school by October 1st, that student was considered a dropout for the past year and the grade which they had completed. Beginning in 1998-99, a student who failed to return to school by October 1st was considered a dropout for the grade and year for which they failed to return. Also beginning in 1998-99, dropout membership was adjusted to equal fall membership. These adjustments were required to be consistent with the National Center for Education Statistics' (NCES) dropout definition.

Figure 1b: Dropout Rates by Grade 1993 - 2009 (Grades 7-12)

	1993	1994	1995	1996	1997	1998	1999*	2000	2001	2002	2003	2004	2005	2006	2007	2008	2009
7th	0.54	0.53	0.51	0.56	0.44	0.53	0.32	0.21	0.15	0.06	0.08	0.06	0.07	0.06	0.07	0.14	0.10
8th	0.97	1.11	1.08	0.92	0.82	0.92	0.56	0.44	0.35	0.26	0.16	0.14	0.18	0.20	0.17	0.36	0.17
9th	4.85	4.71	4.99	5.10	5.16	4.76	4.53	4.57	4.04	3.03	2.48	2.59	2.41	2.56	2.43	2.67	2.21
10th	5.28	5.42	5.79	5.85	5.54	5.44	5.19	5.49	5.20	4.31	3.67	3.70	3.82	3.63	3.54	3.89	3.04
11th	5.31	5.72	6.38	6.03	5.65	6.03	5.39	5.72	5.12	4.63	3.83	3.89	4.00	3.92	3.86	3.70	3.54
12th	4.81	4.71	5.06	5.20	4.88	5.28	4.95	4.69	4.66	3.98	3.61	3.42	4.01	3.34	2.99	2.93	2.89
Total	3.50	3.60	3.86	3.85	3.70	3.75	3.42	3.45	3.18	2.62	2.21	2.19	2.29	2.21	2.14	2.27	1.97



*Prior to 1998-99, if a student failed to return to school by October 1st, that student was considered a dropout for the past year and the grade which they had completed. Beginning in 1998-99, a student who failed to return to school by October 1st was considered a dropout for the grade and year for which they failed to return. Also beginning in 1998-99, dropout membership was adjusted to equal fall membership. These adjustments were required to be consistent with the National Center for Education Statistics' (NCES) dropout definition.

Figure 1c: Dropout Rates by Gender 1999 - 2009 (Grades 9-12)

	1999	2000	2001	2002	2003	2004	2005	2006	2007	2008	2009
Male	5.86	6.04	5.67	4.63	3.91	3.91	4.06	3.91	3.69	3.77	3.26
Female	4.09	4.11	3.73	3.20	2.75	2.77	2.86	2.69	2.64	2.79	2.50

Note: 1999 was the first year dropout data was available by gender.

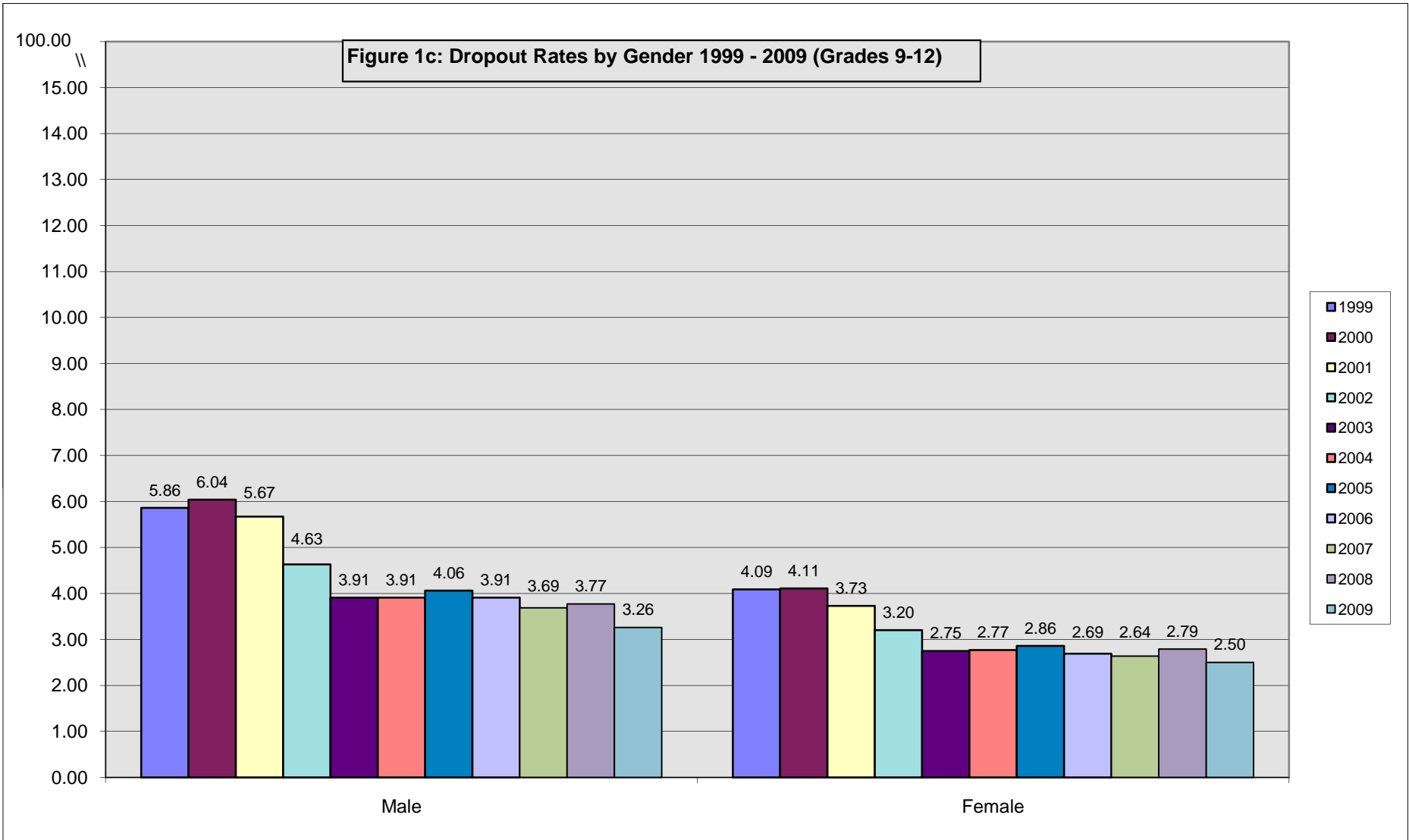


Figure 1d: Dropout Rates by Ethnicity 1999 - 2009 (Grades 9-12)

	1999	2000	2001	2002	2003	2004	2005	2006	2007	2008	2009
White	4.81	4.84	4.50	3.78	3.23	3.22	3.21	3.03	2.94	2.87	2.60
African American	7.00	7.81	6.83	5.52	4.45	4.56	5.75	5.45	4.77	6.14	4.91
Hispanic	7.20	6.65	7.24	5.96	4.65	4.77	5.08	6.11	5.46	6.07	4.06
Asian	3.04	2.29	3.26	2.09	1.80	1.73	1.39	1.11	1.22	1.82	2.27
American Indian	1.20	3.23	5.86	1.64	2.08	5.32	2.81	2.64	2.45	4.28	3.04
Other	2.92	3.07	2.98	2.72	2.29	2.50	3.38	3.67	3.96	4.09	3.49

Note: 1999 was the first year dropout data was available by ethnicity.

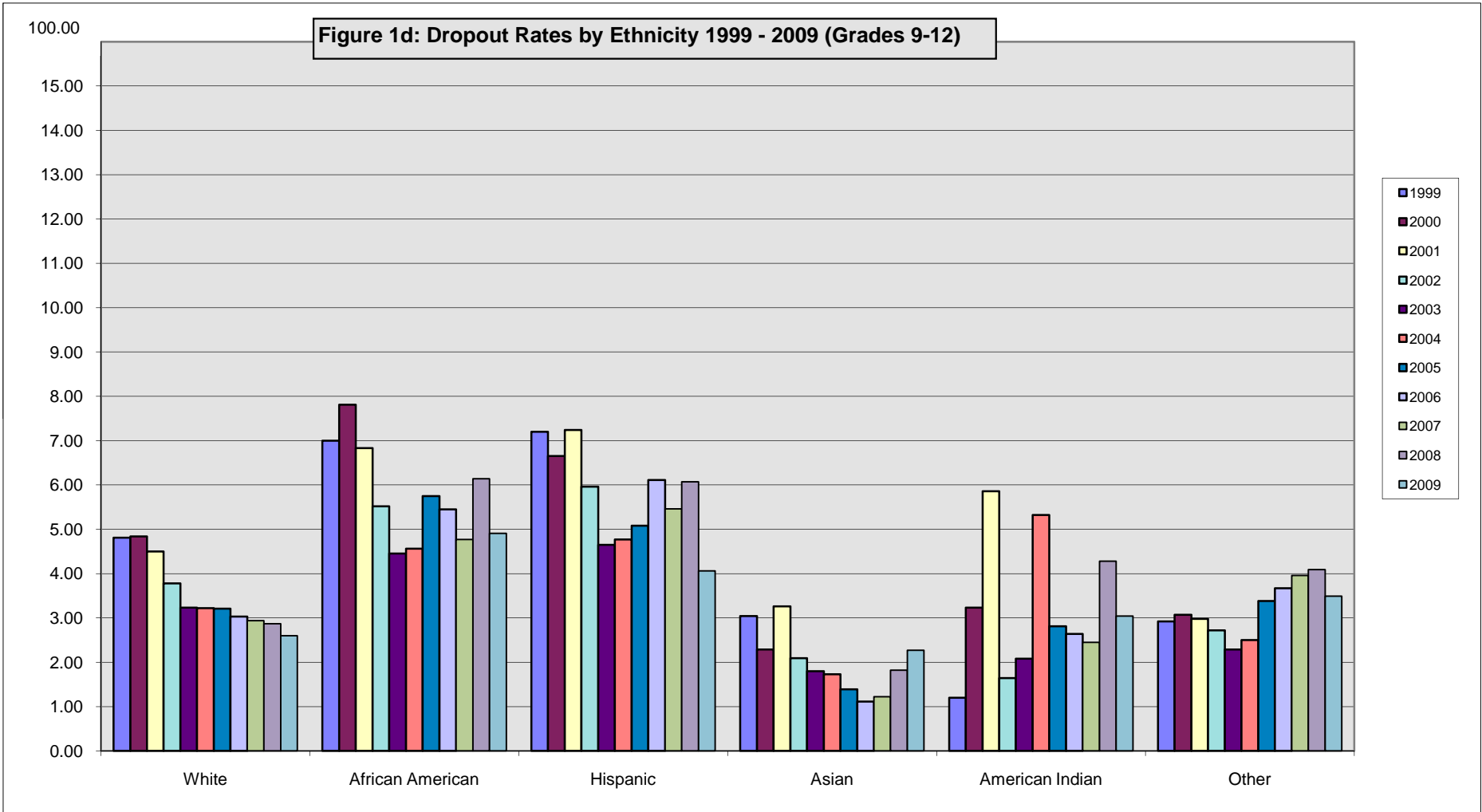


Table 1a & Table 1b: Number of Dropouts and Membership by Grade 1993 - 2009

Table 1a: Dropouts by Grade																	
	1993	1994	1995	1996	1997	1998	1999*	2000	2001	2002	2003	2004	2005	2006	2007	2008	2009
7th	281	276	264	281	217	263	154	100	73	28	40	30	35	26	36	67	49
8th	489	566	553	463	411	455	275	212	165	122	78	68	93	92	85	177	84
9th	2,593	2,563	2,803	2,838	2,873	2,638	2,465	2,532	2,167	1,630	1,328	1,419	1,362	1,478	1,390	1,521	1,222
10th	2,547	2,640	2,820	2,842	2,717	2,673	2,502	2,567	2,484	2,028	1,750	1,762	1,847	1,837	1,828	1,999	1,566
11th	2,177	2,521	2,752	2,561	2,454	2,620	2,315	2,447	2,110	1,958	1,620	1,646	1,705	1,732	1,757	1,723	1,642
12th	1,855	1,821	2,056	2,055	1,971	2,187	1,922	1,808	1,780	1,485	1,403	1,336	1,566	1,321	1,199	1,229	1,243
(9-12)	9,172	9,545	10,431	10,296	10,015	10,118	9,204	9,354	8,541	7,101	6,101	6,163	6,480	6,368	6,174	6,472	5,673
(7-12)	9,942	10,387	11,248	11,040	10,643	10,836	9,633	9,666	8,779	7,251	6,219	6,261	6,608	6,486	6,295	6,716	5,806

Table 1b: Dropout Membership by Grade																	
	1993	1994	1995	1996	1997	1998	1999*	2000	2001	2002	2003	2004	2005	2006	2007	2008	2009
7th	52,224	51,634	51,334	50,608	49,438	49,959	47,994	48,497	47,493	49,163	50,268	51,344	50,618	50,136	49,172	49,607	49,184
8th	50,280	51,180	51,172	50,101	49,835	49,649	48,844	47,764	47,478	47,199	48,932	50,184	51,117	50,692	50,290	49,645	49,658
9th	53,485	54,362	56,168	55,639	55,718	55,444	54,455	55,354	53,687	53,878	53,537	54,730	56,637	57,753	57,258	56,863	55,295
10th	48,275	48,721	48,727	48,575	49,037	49,096	48,199	46,783	47,776	47,077	47,743	47,640	48,331	50,295	51,558	51,341	51,514
11th	40,991	44,060	43,154	42,447	43,447	43,457	42,986	42,812	41,230	42,278	42,303	42,361	42,582	43,750	45,490	46,559	46,393
12th	38,545	38,677	40,663	39,522	40,351	41,445	38,793	38,584	38,164	37,290	38,901	39,025	39,075	39,151	40,232	41,950	43,032
(9-12)	181,296	185,820	188,712	186,183	188,553	189,442	184,433	183,533	180,857	180,523	182,484	183,756	186,625	190,949	194,538	196,713	196,234
(7-12)	283,800	288,634	291,218	286,892	287,826	289,050	281,271	279,794	275,828	276,885	281,684	285,284	288,360	291,777	294,000	295,965	295,076

*Prior to 1998-99, if a student failed to return to school by October 1st, that student was considered a dropout for the past year and the grade which they had completed. Beginning in 1998-99, a student who failed to return to school by October 1st was considered a dropout for the grade and year for which they failed to return. Also beginning in 1998-99, dropout membership was adjusted to equal fall membership. These adjustments were required to be consistent with the National Center for Education Statistics' (NCES) dropout definition.

Table 1c & Table 1d: Male\Female Dropouts and Membership by Grade 1999-2009

Table 1c: Male Dropouts and Membership by Grade

	Male 1999		Male 2000		Male 2001		Male 2002		Male 2003	
	Dropouts	Membership	Dropouts	Membership	Dropouts	Membership	Dropouts	Membership	Dropouts	Membership
	7th	97	24,940	64	25,071	48	24,518	17	25,482	30
8th	158	25,353	133	24,733	94	24,369	73	24,216	48	25,165
9th	1,581	28,701	1,639	29,605	1,428	28,440	1,002	28,422	873	28,201
10th	1,534	24,725	1,553	23,929	1,535	24,826	1,258	24,353	1,095	24,594
11th	1,319	21,370	1,439	21,507	1,292	20,536	1,176	21,389	918	21,381
12th	1,061	18,935	1,043	18,949	998	18,860	842	18,268	769	19,398
(9-12)	5,495	93,731	5,674	93,990	5,253	92,662	4,278	92,432	3,655	93,574
(7-12)	5,750	144,024	5,871	143,794	5,395	141,549	4,368	142,130	3,733	144,731

Note: 1999 was the first year dropout data was available by gender.

	Male 2004		Male 2005		Male 2006		Male 2007		Male 2008		Male 2009	
	Dropouts	Membership	Dropouts	Membership	Dropouts	Membership	Dropouts	Membership	Dropouts	Membership	Dropouts	Membership
7th	22	26,431	20	26,426	16	25,905	25	25,471	41	25,559	32	25,606
8th	39	25,843	50	26,281	59	26,350	49	25,826	117	25,703	52	25,613
9th	894	28,864	868	29,825	962	30,272	897	30,267	946	29,970	756	29,175
10th	1,059	24,533	1,109	25,015	1,099	25,822	1,113	26,246	1,213	26,510	947	26,619
11th	956	21,276	1,000	21,444	1,014	22,035	1,025	22,774	959	23,197	886	23,382
12th	771	19,328	902	19,288	740	19,346	624	19,954	672	20,779	684	21,231
(9-12)	3,680	94,001	3,879	95,572	3,815	97,475	3,659	99,241	3,790	100,456	3,273	100,407
(7-12)	3,741	146,275	3,949	148,279	3,890	149,730	3,733	150,538	3,948	151,718	3,357	151,626

Table 1d: Female Dropouts and Membership by Grade

	Female 1999		Female 2000		Female 2001		Female 2002		Female 2003	
	Dropouts	Membership	Dropouts	Membership	Dropouts	Membership	Dropouts	Membership	Dropouts	Membership
7th	57	23,054	36	23,426	25	22,975	11	23,681	10	24,276
8th	117	23,491	79	23,031	71	23,109	49	22,983	30	23,767
9th	884	25,754	893	25,749	739	25,247	628	25,456	455	25,336
10th	968	23,474	1,014	22,854	949	22,950	770	22,724	655	23,149
11th	996	21,616	1,008	21,305	818	20,694	782	20,889	702	20,922
12th	861	19,858	765	19,635	782	19,304	643	19,022	634	19,503
(9-12)	3,709	90,702	3,680	89,543	3,288	88,195	2,823	88,091	2,446	88,910
(7-12)	3,883	137,247	3,795	136,000	3,384	134,279	2,883	134,755	2,486	136,953

	Female 2004		Female 2005		Female 2006		Female 2007		Female 2008		Female 2009	
	Dropouts	Membership	Dropouts	Membership	Dropouts	Membership	Dropouts	Membership	Dropouts	Membership	Dropouts	Membership
7th	8	24,913	15	24,192	14	24,231	11	23,701	26	24,048	17	23,578
8th	29	24,341	43	24,836	44	24,342	37	24,464	60	23,942	32	24,045
9th	525	25,866	495	26,812	519	27,481	495	26,991	575	26,893	466	26,120
10th	703	23,107	738	23,316	728	24,473	712	25,312	786	24,831	619	24,895
11th	690	21,085	705	21,138	700	21,715	730	22,716	764	23,362	756	23,011
12th	565	19,697	664	19,787	567	19,805	579	20,278	557	21,171	559	21,801
(9-12)	2,483	89,755	2,602	91,053	2,514	93,474	2,516	95,297	2,682	96,257	2,400	95,827
(7-12)	2,520	139,009	2,660	140,081	2,572	142,047	2,564	143,462	2,768	144,247	2,449	143,450

Table 1e, Table 1f & Table 1g: Number of Dropouts and Membership by Ethnicity and Grade 1999, 2000 & 2001

Table 1e: Dropouts and Membership by Ethnicity and Grade 1999												
	White		African American		Hispanic		Asian		American Indian		Other	
	Dropouts	Membership	Dropouts	Membership	Dropouts	Membership	Dropouts	Membership	Dropouts	Membership	Dropouts	Membership
7th	115	42,020	24	4,521	8	273	1	204	***	***	6	934
8th	227	43,325	36	4,208	7	254	1	213	***	***	4	804
9th	2,085	48,007	332	5,338	21	296	7	260	***	***	19	504
10th	2,093	42,801	372	4,490	17	265	12	206	***	***	7	382
11th	2,020	38,565	257	3,617	17	195	8	219	***	***	13	360
12th	1,705	34,977	199	3,132	13	189	0	202	***	***	5	261
(9-12)	7,903	164,350	1,160	16,577	68	945	27	887	2	167	44	1,507
(7-12)	8,245	249,695	1,220	25,306	83	1,472	29	1,304	2	249	54	3,245

Table 1f: Dropouts and Membership by Ethnicity and Grade 2000												
	White		African American		Hispanic		Asian		American Indian		Other	
	Dropouts	Membership	Dropouts	Membership	Dropouts	Membership	Dropouts	Membership	Dropouts	Membership	Dropouts	Membership
7th	77	42,878	18	4,654	3	302	1	262	***	***	1	342
8th	178	42,183	28	4,676	1	292	1	239	***	***	4	332
9th	2,085	48,732	397	5,513	28	385	8	267	***	***	12	408
10th	2,158	41,540	365	4,322	26	282	6	280	***	***	9	317
11th	2,064	38,182	359	3,819	11	271	4	234	***	***	9	269
12th	1,594	34,742	190	3,122	10	190	5	225	***	***	9	278
(9-12)	7,901	163,196	1,311	16,776	75	1,128	23	1,006	5	155	39	1,272
(7-12)	8,156	248,257	1,357	26,106	79	1,722	25	1,507	5	256	44	1,946

Table 1g: Dropouts and Membership by Ethnicity and Grade 2001												
	White		African American		Hispanic		Asian		American Indian		Other	
	Dropouts	Membership	Dropouts	Membership	Dropouts	Membership	Dropouts	Membership	Dropouts	Membership	Dropouts	Membership
7th	51	41,629	16	4,684	2	396	0	306	***	***	2	391
8th	135	41,966	23	4,358	4	361	1	350	0	104	2	339
9th	1,781	46,953	324	5,499	38	446	13	348	***	***	7	348
10th	2,120	42,396	307	4,377	25	340	13	325	***	***	11	271
11th	1,782	36,671	291	3,673	22	265	8	325	***	***	6	251
12th	1,539	34,312	215	3,089	9	247	7	261	***	***	8	204
(9-12)	7,222	160,332	1,137	16,638	94	1,298	41	1,259	17	256	32	1,074
(7-12)	7,408	243,927	1,176	25,680	100	2,055	42	1,915	19	447	36	1,804

*** Data not reported when membership in any category is below 100.

Table 1h, Table 1i & Table 1j: Number of Dropouts and Membership by Ethnicity and Grade 2002, 2003 & 2004

Table 1h: Dropouts and Membership by Ethnicity and Grade 2002												
	White		African American		Hispanic		Asian		American Indian		Other	
	Dropouts	Membership	Dropouts	Membership	Dropouts	Membership	Dropouts	Membership	Dropouts	Membership	Dropouts	Membership
7th	23	42,855	5	4,932	0	481	0	322	0	117	0	456
8th	94	41,344	20	4,589	5	447	0	321	1	105	2	393
9th	1,349	46,913	244	5,565	22	485	6	383	2	134	7	398
10th	1,696	41,309	289	4,597	28	433	7	344	***	***	8	330
11th	1,689	37,658	228	3,580	21	339	4	337	***	***	10	306
12th	1,271	33,161	175	3,217	19	253	12	321	***	***	11	289
(9-12)	6,005	159,041	936	16,959	90	1,510	29	1,385	5	305	36	1,323
(7-12)	6,122	243,240	961	26,480	95	2,438	29	2,028	6	527	38	2,172

Table 1i: Dropouts and Membership by Ethnicity and Grade 2003												
	White		African American		Hispanic		Asian		American Indian		Other	
	Dropouts	Membership	Dropouts	Membership	Dropouts	Membership	Dropouts	Membership	Dropouts	Membership	Dropouts	Membership
7th	30	43,825	10	5,077	0	582	0	337	***	***	0	355
8th	58	42,669	13	4,903	5	534	0	389	1	101	1	336
9th	1,102	46,378	193	5,648	21	638	6	403	***	***	4	372
10th	1,478	41,777	228	4,722	28	484	7	416	***	***	7	256
11th	1,400	37,352	185	3,896	19	406	9	372	***	***	7	222
12th	1,195	34,659	176	3,308	18	323	6	363	***	***	6	200
(9-12)	5,175	160,166	782	17,574	86	1,851	28	1,554	6	289	24	1,050
(7-12)	5,263	246,660	805	27,554	91	2,967	28	2,280	7	482	25	1,741

Table 1j: Dropouts and Membership by Ethnicity and Grade 2004												
	White		African American		Hispanic		Asian		American Indian		Other	
	Dropouts	Membership	Dropouts	Membership	Dropouts	Membership	Dropouts	Membership	Dropouts	Membership	Dropouts	Membership
7th	25	44,283	3	5,423	1	692	1	384	0	107	0	455
8th	55	43,698	8	5,008	4	641	1	339	0	117	0	381
9th	1,189	47,253	175	5,834	29	702	9	406	6	140	11	395
10th	1,444	41,424	272	4,768	27	569	6	432	7	103	6	344
11th	1,380	37,306	222	3,870	26	431	9	418	***	***	7	250
12th	1,141	34,248	161	3,747	18	394	4	360	***	***	6	210
(9-12)	5,154	160,231	830	18,219	100	2,096	28	1,616	21	395	30	1,199
(7-12)	5,234	248,212	841	28,650	105	3,429	30	2,339	21	619	30	2,035

*** Data not reported when membership in any category is below 100.

Table 1k, Table 1l & Table 1m: Number of Dropouts and Membership by Ethnicity and Grade 2005, 2006 & 2007

Table 1k: Dropouts and Membership by Ethnicity and Grade 2005												
	White		African American		Hispanic		Asian		American Indian		Other	
	Dropouts	Membership	Dropouts	Membership	Dropouts	Membership	Dropouts	Membership	Dropouts	Membership	Dropouts	Membership
7th	23	43,245	8	5,436	3	861	1	439	***	***	0	539
8th	67	44,072	20	5,342	4	778	0	366	***	***	0	464
9th	1,099	48,665	210	6,122	38	890	1	395	0	111	16	454
10th	1,445	41,810	343	4,952	36	672	11	413	***	***	11	396
11th	1,391	37,159	269	4,052	26	551	7	426	***	***	10	340
12th	1,260	34,312	255	3,592	29	424	4	420	***	***	12	260
(9-12)	5,195	161,946	1,077	18,718	129	2,537	23	1,654	9	320	49	1,450
(7-12)	5,285	249,263	1,105	29,496	136	4,176	24	2,459	11	513	49	2,453

Table 1l: Dropouts and Membership by Ethnicity and Grade 2006												
	White		African American		Hispanic		Asian		American Indian		Other	
	Dropouts	Membership	Dropouts	Membership	Dropouts	Membership	Dropouts	Membership	Dropouts	Membership	Dropouts	Membership
7th	18	42,917	6	5,181	4	905	1	388	***	***	1	660
8th	77	43,265	16	5,435	7	931	2	457	***	***	1	522
9th	1,141	49,054	262	6,591	56	993	4	436	***	***	16	587
10th	1,418	43,435	343	5,095	43	779	1	419	***	***	18	483
11th	1,352	37,921	275	4,316	53	583	11	449	***	***	22	413
12th	1,073	34,104	196	3,730	23	508	3	409	***	***	11	341
(9-12)	4,984	164,514	1,076	19,732	175	2,863	19	1,713	8	303	67	1,824
(7-12)	5,079	250,696	1,098	30,348	186	4,699	22	2,558	8	470	69	3,006

Table 1m: Dropouts and Membership by Ethnicity and Grade 2007												
	White		African American		Hispanic		Asian		American Indian		Other	
	Dropouts	Membership	Dropouts	Membership	Dropouts	Membership	Dropouts	Membership	Dropouts	Membership	Dropouts	Membership
7th	26	41,858	8	5,099	1	988	1	435	***	***	0	719
8th	56	42,952	18	5,189	10	980	0	418	***	***	2	675
9th	1,066	48,247	261	6,679	42	1,147	4	488	***	***	19	627
10th	1,434	43,962	297	5,649	65	872	6	453	***	***	21	557
11th	1,426	39,441	250	4,402	46	710	7	433	***	***	24	447
12th	977	34,904	178	3,927	25	532	5	425	***	***	16	391
(9-12)	4,903	166,554	986	20,657	178	3,261	22	1,799	6	245	80	2,022
(7-12)	4,985	251,364	1,012	30,945	189	5,229	23	2,652	6	394	82	3,416

*** Data not reported when membership in any category is below 100.

Table 1n: Number of Dropouts and Membership by Ethnicity and Grade 2008 & 2009

Table 1n: Dropouts and Membership by Ethnicity and Grade 2008												
	White		African American		Hispanic		Asian		American Indian		Other	
	Dropouts	Membership	Dropouts	Membership	Dropouts	Membership	Dropouts	Membership	Dropouts	Membership	Dropouts	Membership
7th	26	41,786	24	5,311	10	1,206	4	472	***	***	3	764
8th	113	42,109	41	5,221	12	1,062	4	464	***	***	7	717
9th	1,041	47,752	392	6,635	57	1,193	6	464	***	***	23	740
10th	1,474	43,447	401	5,770	82	1,001	10	531	***	***	27	519
11th	1,323	39,953	315	4,830	51	788	13	450	***	***	19	485
12th	966	36,280	209	4,209	31	658	5	419	***	***	16	332
(9-12)	4,804	167,432	1,317	21,444	221	3,640	34	1,864	11	257	85	2,076
(7-12)	4,943	251,327	1,382	31,976	243	5,908	42	2,800	11	329	95	3,557

Table 1m: Dropouts and Membership by Ethnicity and Grade 2009												
	White		African American		Hispanic		Asian		American Indian		Other	
	Dropouts	Membership	Dropouts	Membership	Dropouts	Membership	Dropouts	Membership	Dropouts	Membership	Dropouts	Membership
7th	27	41,338	15	5,165	2	1,237	5	500	***	***	0	871
8th	55	41,747	15	5,286	7	1,271	3	491	***	***	4	796
9th	906	46,173	231	6,367	49	1,284	13	550	***	***	22	842
10th	1,193	43,473	296	5,763	40	1,057	9	482	***	***	25	665
11th	1,260	39,504	311	4,925	38	885	13	527	***	***	17	490
12th	954	36,819	223	4,565	34	735	10	424	***	***	21	441
(9-12)	4,313	165,969	1,061	21,620	161	3,961	45	1,983	8	263	85	2,438
(7-12)	4,395	249,054	1,091	32,071	170	6,469	53	2,974	8	403	89	4,105

*** Data not reported when membership in any category is below 100.

Figure 2: Retention Rates by Grade 1993 - 2009 (Grades 4-12)

	1993	1994	1995	1996	1997	1998	1999	2000	2001	2002	2003	2004	2005	2006	2007	2008	2009
4th	0.68	0.64	1.06	1.05	1.15	1.23	1.34	1.36	1.15	0.97	0.74	0.62	0.52	0.47	0.55	0.35	0.39
5th	0.61	0.51	0.72	0.82	0.80	0.87	1.23	0.85	0.71	0.52	0.54	0.41	0.47	0.34	0.36	0.31	0.28
6th	1.47	1.57	1.89	1.75	1.66	2.05	1.99	1.95	2.02	1.94	1.80	1.58	1.39	1.16	0.99	0.68	0.72
7th	2.26	2.73	2.69	2.65	2.60	2.82	2.75	2.54	2.23	1.97	1.76	1.57	1.49	0.95	1.00	0.74	0.79
8th	1.37	1.73	1.61	1.89	1.81	1.94	1.99	1.61	1.48	1.37	1.36	1.13	1.10	0.85	0.80	0.72	0.83
9th	7.86	8.76	10.65	10.68	10.28	10.41	12.55	11.84	11.17	10.81	10.03	10.79	10.81	9.64	10.02	8.44	8.82
10th	5.52	5.70	6.89	6.79	6.49	6.74	6.88	8.03	7.51	7.59	7.50	6.91	7.18	6.66	6.78	6.03	6.60
11th	3.40	3.35	3.95	4.06	3.74	4.33	4.25	4.38	4.35	4.32	4.30	4.11	4.13	3.86	3.73	3.22	4.06
12th	2.59	2.23	2.26	2.17	2.26	2.06	2.30	2.46	2.10	2.31	2.47	2.11	2.00	1.43	1.75	1.70	1.83
Total	2.84	3.05	3.59	3.62	3.52	3.71	4.03	3.97	3.67	3.55	3.38	3.27	3.30	2.92	3.00	2.55	2.75

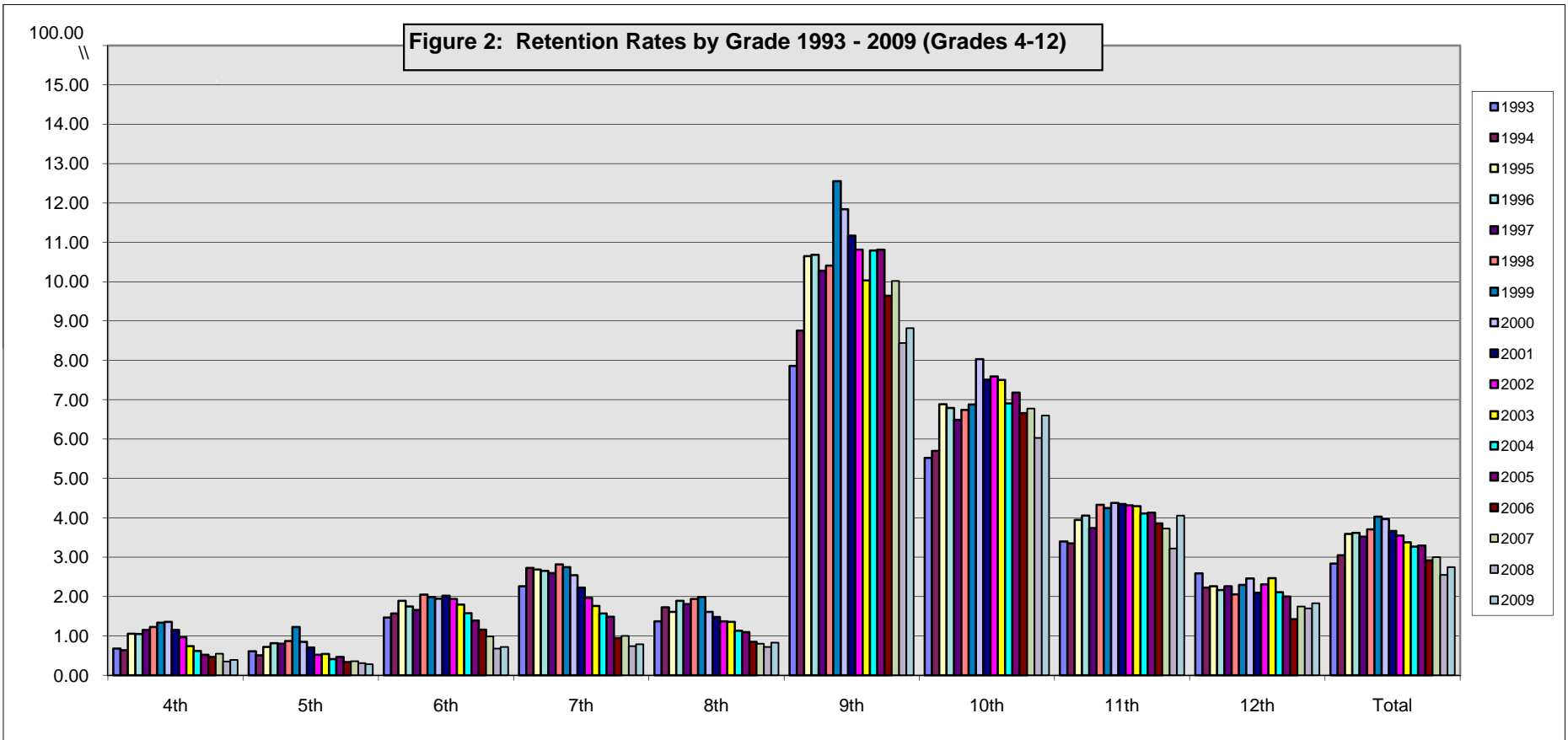


Table 2a & Table 2b: Number of Retentions and Membership by Grade 1993 - 2009

Table 2a: Retentions by Grade																	
	1993	1994	1995	1996	1997	1998	1999	2000	2001	2002	2003	2004	2005	2006	2007	2008	2009
4th	338	315	513	492	538	570	643	672	570	480	357	298	246	226	261	173	195
5th	307	256	351	398	374	406	567	407	348	260	266	198	226	162	173	152	141
6th	746	794	950	857	807	967	943	913	981	967	913	792	688	564	481	334	349
7th	1,176	1,399	1,374	1,335	1,282	1,402	1,310	1,214	1,052	964	881	800	750	472	488	367	388
8th	684	874	813	939	897	955	963	760	699	645	665	563	556	429	401	357	411
9th	4,001	4,538	5,682	5,637	5,432	5,496	6,501	6,176	5,697	5,540	5,106	5,615	5,832	5,307	5,487	4,625	4,698
10th	2,525	2,622	3,160	3,105	3,002	3,129	3,143	3,553	3,396	3,427	3,408	3,117	3,322	3,206	3,338	2,954	3,247
11th	1,317	1,386	1,596	1,616	1,532	1,766	1,719	1,759	1,694	1,732	1,718	1,636	1,664	1,604	1,597	1,413	1,785
12th	930	804	850	782	837	789	867	914	783	856	950	790	756	545	689	696	772
Total	12,024	12,988	15,289	15,161	14,701	15,480	16,656	16,368	15,220	14,871	14,264	13,809	14,040	12,515	12,915	11,071	11,986

Table 2b: Retention Membership by Grade																	
	1993	1994	1995	1996	1997	1998	1999	2000	2001	2002	2003	2004	2005	2006	2007	2008	2009
4th	49,638	48,939	48,471	46,652	46,860	46,309	48,128	49,247	49,719	49,245	48,487	47,755	47,749	47,628	47,843	49,192	49,839
5th	50,003	49,819	48,797	48,347	46,684	46,920	46,248	48,022	49,053	49,934	49,392	48,689	48,242	48,239	47,922	48,332	49,507
6th	50,807	50,509	50,296	48,999	48,588	47,155	47,360	46,750	48,657	49,960	50,857	50,049	49,442	48,808	48,779	48,763	48,548
7th	51,942	51,333	51,070	50,321	49,219	49,696	47,654	47,760	47,238	48,922	50,052	51,014	50,451	49,944	49,022	49,461	49,061
8th	49,788	50,588	50,454	49,605	49,422	49,193	48,400	47,068	47,259	47,015	48,731	49,954	50,846	50,550	50,091	49,612	49,667
9th	50,883	51,790	53,353	52,795	52,820	52,781	51,818	52,154	51,001	51,237	50,910	52,039	53,975	55,056	54,760	54,783	53,278
10th	45,722	46,037	45,895	45,725	46,261	46,393	45,658	44,261	45,209	45,147	45,454	45,129	46,296	48,163	49,256	49,006	49,203
11th	38,733	41,338	40,372	39,842	40,911	40,785	40,484	40,169	38,987	40,130	39,974	39,805	40,261	41,545	42,798	43,875	43,946
12th	35,947	36,093	37,692	35,957	37,094	38,330	37,698	37,110	37,257	37,084	38,416	37,392	37,789	38,117	39,405	41,056	42,117
Total	423,463	426,446	426,400	418,243	417,859	417,562	413,448	412,541	414,380	418,674	422,273	421,826	425,051	428,050	429,876	434,080	435,166

Figure 3: Transition to Adult Life Percentages 1993 - 2009

	1993	1994	1995	1996	1997	1998	1999	2000	2001	2002	2003	2004	2005	2006	2007	2008	2009
College in KY	44.1	43.8	43.6	44.4	44.4	45.7	46.0	46.4	47.6	48.4	48.8	49.3	48.5	49.6	48.7	49.7	50.9
College not in KY	5.7	6.2	6.3	6.5	6.6	6.8	6.7	6.8	6.5	5.9	6.0	5.4	5.5	5.3	5.6	5.4	5.5
Voc./ Tech.	4.1	4.3	4.0	4.6	4.8	4.9	4.3	4.6	5.0	5.1	4.9	4.7	5.4	5.2	4.9	5.0	6.3
Military	3.7	3.3	3.1	2.9	3.1	2.8	2.7	2.7	2.9	2.8	2.9	2.6	2.2	2.4	2.4	2.4	2.4
Work	30.2	30.8	31.1	31.0	30.4	28.9	29.3	28.7	26.9	26.7	26.7	27.5	27.5	27.3	27.5	26.0	22.8
Work/ School	4.8	5.5	5.6	5.9	5.9	5.9	6.3	6.2	6.1	6.8	6.7	6.4	7.0	6.2	6.8	6.8	6.5
No Success	7.4	6.0	6.3	4.7	4.8	5.0	4.8	4.7	4.9	4.3	4.0	4.0	3.9	3.9	4.3	4.7	5.6

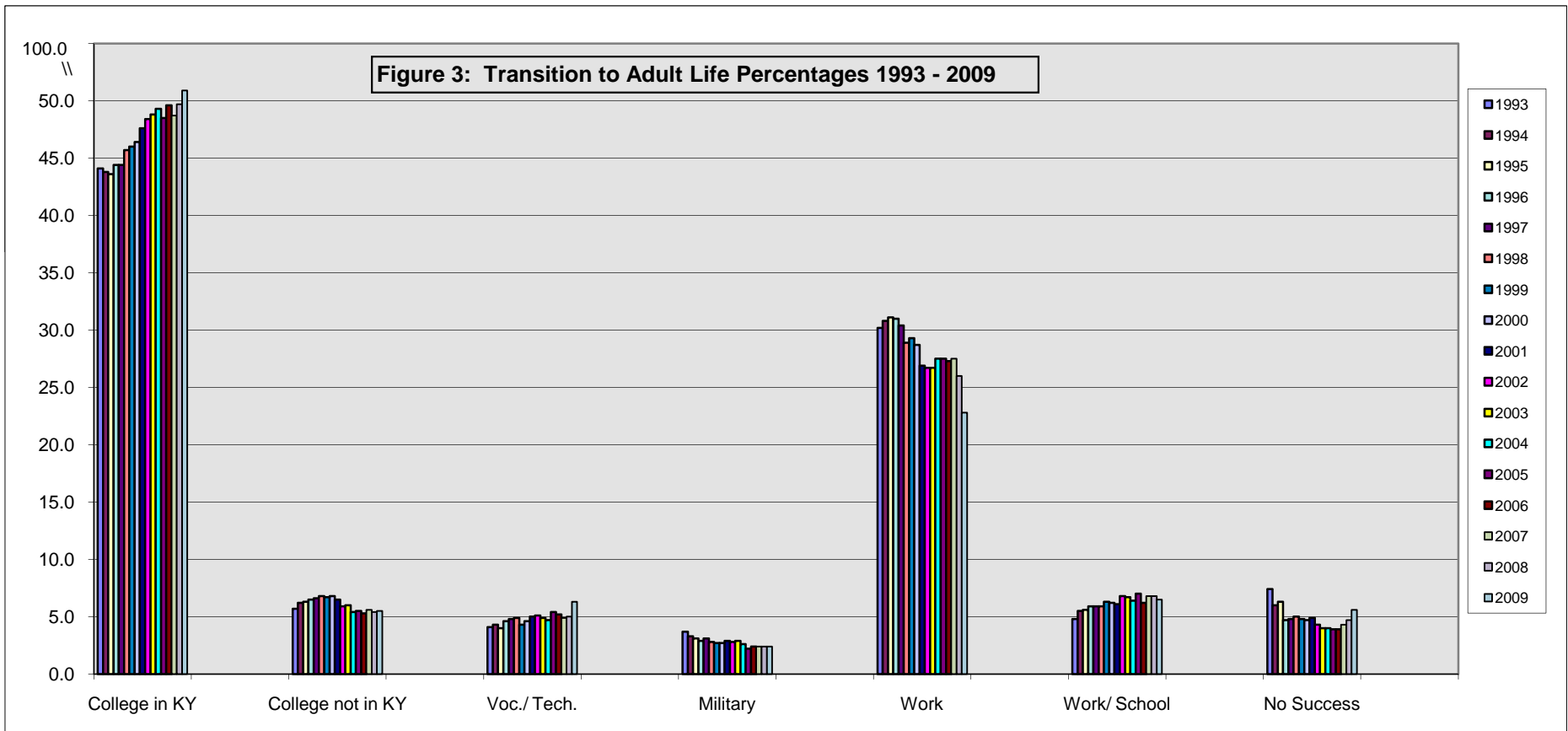


Table 3a & Table 3b: Transition to Adult Life Data & Graduates by Gender and Ethnicity 1999-2009

Table 3a: Transition to Adult Life Data																	
	1993	1994	1995	1996	1997	1998	1999	2000	2001	2002	2003	2004	2005	2006	2007	2008	2009
College in KY	16,024	15,679	16,379	16,256	16,417	17,046	17,086	17,091	17,508	17,592	18,379	18,630	18,500	19,122	19,332	20,525	21,703
College out of KY	2,079	2,220	2,373	2,381	2,443	2,530	2,479	2,509	2,392	2,141	2,256	2,055	2,106	2,052	2,217	2,247	2,337
Voc./ Tech.	1,501	1,526	1,519	1,669	1,770	1,822	1,604	1,677	1,837	1,852	1,862	1,793	2,043	2,004	1,946	2,051	2,686
Military	1,361	1,194	1,172	1,079	1,140	1,039	1,009	1,007	1,081	1,026	1,096	996	837	920	953	970	1,034
Work	10,974	11,037	11,680	11,368	11,255	10,789	10,882	10,564	9,904	9,711	10,075	10,381	10,493	10,513	10,912	10,720	9,723
Work/School	1,728	1,971	2,109	2,148	2,174	2,196	2,352	2,267	2,249	2,471	2,509	2,420	2,677	2,400	2,701	2,809	2,771
No Success	2,693	2,150	2,356	1,740	1,794	1,848	1,767	1,716	1,799	1,573	1,495	1,512	1,468	1,496	1,652	1,944	2,403
Grads	36,360	35,777	37,588	36,641	36,993	37,270	37,179	36,831	36,770	36,366	37,672	37,787	38,124	38,524	39,731	41,275	42,657
Transition Rate	92.59	93.99	93.73	95.25	95.15	95.04	95.25	95.34	95.11	95.67	96.03	96.00	96.15	96.07	95.80	95.27	94.37

Table 3b: Graduates by Gender and Ethnicity																	
	1993	1994	1995	1996	1997	1998	1999	2000	2001	2002	2003	2004	2005	2006	2007	2008	2009
Male #	17,728	17,694	18,206	18,138	17,802	18,060	17,942	17,846	17,866	17,641	18,640	18,667	18,671	18,895	19,738	20,355	21,069
%	48.8	49.5	48.4	49.5	48.1	48.5	48.3	48.5	48.6	48.5	49.5	49.4	48.9	49.1	49.7	49.3	49.4
Female	18,314	17,914	19,030	18,469	19,175	19,210	19,237	18,985	18,904	18,725	19,032	19,088	19,518	19,612	19,965	20,920	21,588
	50.4	50.1	50.6	50.4	51.8	51.5	51.7	51.5	51.4	51.5	50.5	50.6	51.1	50.9	50.3	50.7	50.6
No Gender	318	169	352	34	16	0	0	0	0	0	0	0	0	0	0	0	0
	0.9	0.5	0.9	0.1	0.0	0.0	0.0	0.0	0.0	0.0	0.0	0.0	0.0	0.0	0.0	0.0	0.0
White	32,367	32,066	33,795	32,955	33,218	33,607	33,602	32,938	32,927	32,385	33,565	33,170	33,591	33,739	34,490	35,939	36,728
	89.0	89.6	89.9	89.9	89.8	90.2	90.4	89.4	89.5	89.1	89.1	87.9	88.0	87.6	86.9	87.1	86.1
African American	2,802	2,735	2,923	2,989	3,048	3,007	3,020	2,902	2,994	3,158	3,123	3,387	3,482	3,548	3,728	3,889	4,317
	7.7	7.6	7.8	8.2	8.2	8.1	8.1	7.9	8.1	8.7	8.3	9.0	9.1	9.2	9.4	9.4	10.1
Hispanic	***	130	146	143	150	171	***	197	231	249	385	586	398	479	512	609	722
	***	0.4	0.4	0.4	0.4	0.5	***	0.5	0.6	0.7	1.0	1.6	1.0	1.2	1.3	1.5	1.7
Asian	160	250	249	260	238	224	213	239	266	350	329	347	403	384	387	411	420
	0.4	0.7	0.7	0.7	0.6	0.6	0.6	0.6	0.7	1.0	0.9	0.9	1.1	1.0	1.0	1.0	1.0
American Indian	***	***	***	***	***	***	108	***	***	***	***	***	***	***	200	***	***
	***	***	***	***	***	***	0.3	***	***	***	***	***	***	***	0.5	***	***
Other	***	257	171	242	291	261	146	528	312	193	225	215	256	298	356	371	424
	***	0.7	0.5	0.7	0.8	0.7	0.4	1.4	0.8	0.5	0.6	0.6	0.7	0.8	0.9	0.9	1.0
No ethnicity	859	339	304	52	48	0	0	0	0	0	0	0	0	0	0	0	0
	2.4	0.9	0.8	0.1	0.1	0.0	0.0	0.0	0.0	0.0	0.0	0.0	0.0	0.0	0.0	0.0	0.0
Grads	36,360	35,777	37,588	36,641	36,993	37,270	37,179	36,831	36,770	36,366	37,672	37,787	38,124	38,524	39,731	41,275	42,670

Note: The American Indian category was not collected from 1993-1998. *** Data not reported when membership in any category below 100.

Figure 4: Attendance Rates by Grade 1993-2009 (Grades KG-12)

	1993	1994	1995	1996	1997	1998	1999	2000	2001	2002	2003	2004	2005	2006	2007	2008	2009
KG	94.19	94.33	94.08	94.03	93.76	93.86	93.66	93.85	93.84	94.30	94.14	94.12	94.21	94.50	94.16	94.20	94.24
Primary	95.68	95.83	95.54	95.46	95.27	95.24	95.02	95.16	95.15	95.38	95.32	95.36	95.36	95.58	95.24	95.30	95.26
4th	96.14	96.29	96.03	96.04	95.86	95.81	95.47	95.68	95.58	95.72	95.62	95.75	95.76	95.99	95.69	95.66	95.59
5th	96.03	96.17	95.93	95.89	95.77	95.64	95.40	95.57	95.52	95.61	95.55	95.58	95.65	95.91	95.62	95.59	95.52
6th	95.32	95.37	95.06	95.11	94.90	94.94	94.66	95.02	94.80	94.93	94.78	94.83	94.95	95.34	95.03	95.06	94.97
7th	94.62	94.62	94.27	94.31	94.22	94.20	94.08	94.45	94.34	94.49	94.50	94.41	94.51	94.88	94.59	94.58	94.49
8th	94.27	94.26	93.78	93.84	93.65	93.73	93.44	93.94	93.87	94.17	94.01	94.01	94.03	94.36	94.01	93.93	93.95
9th	93.33	93.11	92.40	92.53	92.19	91.83	92.12	92.48	92.53	93.02	93.06	92.85	92.99	93.23	92.62	92.71	92.87
10th	93.66	93.36	92.89	93.09	92.87	92.49	92.64	93.17	93.01	93.39	93.21	93.10	93.17	93.50	92.83	92.86	92.81
11th	93.34	93.26	92.78	93.03	92.84	92.50	92.50	92.77	92.93	93.14	92.98	92.73	92.82	93.10	92.59	92.34	92.51
12th	92.86	92.69	92.45	92.57	92.10	91.72	91.44	91.79	91.66	92.12	91.72	91.46	91.44	91.96	91.13	90.87	91.05
Total	94.73	94.71	94.32	94.35	94.13	94.03	93.89	94.19	94.15	94.43	94.31	94.26	94.31	94.60	94.18	94.17	94.18

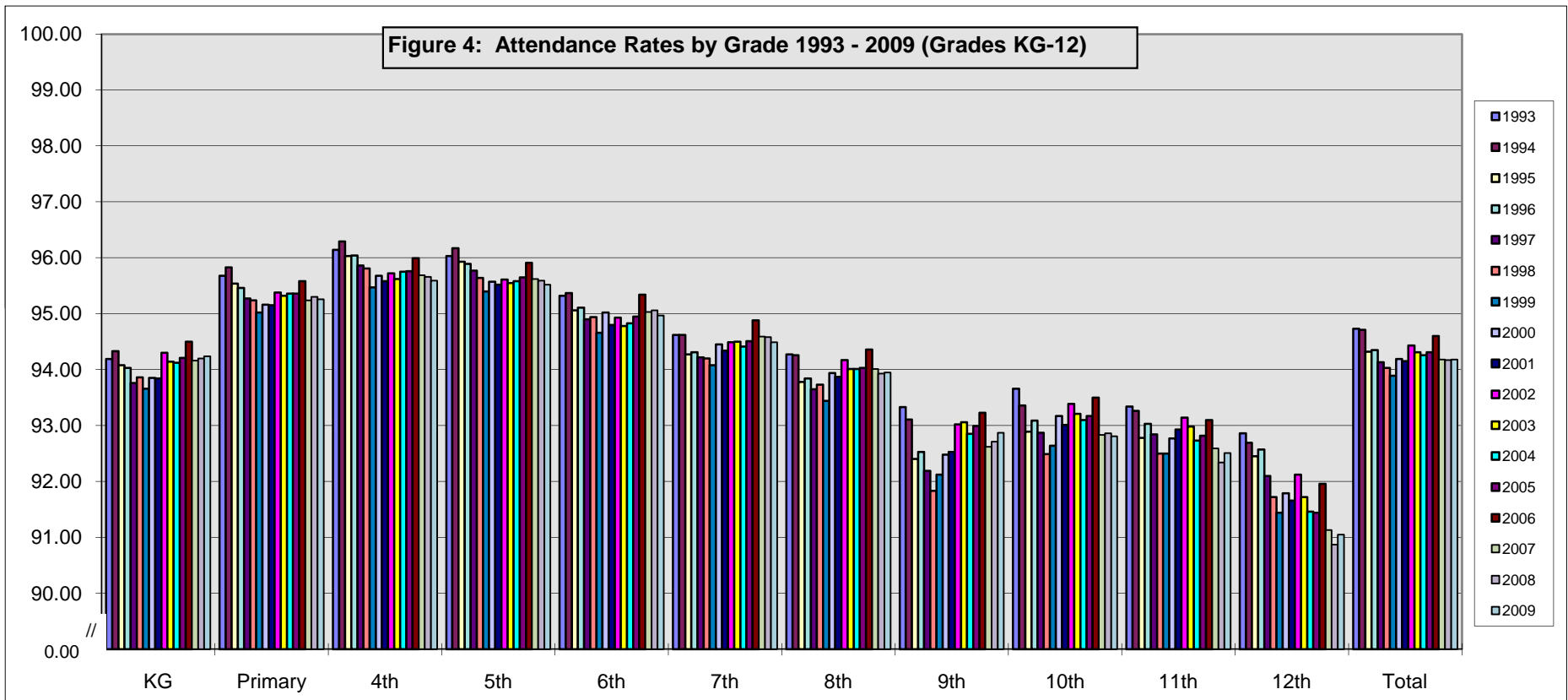
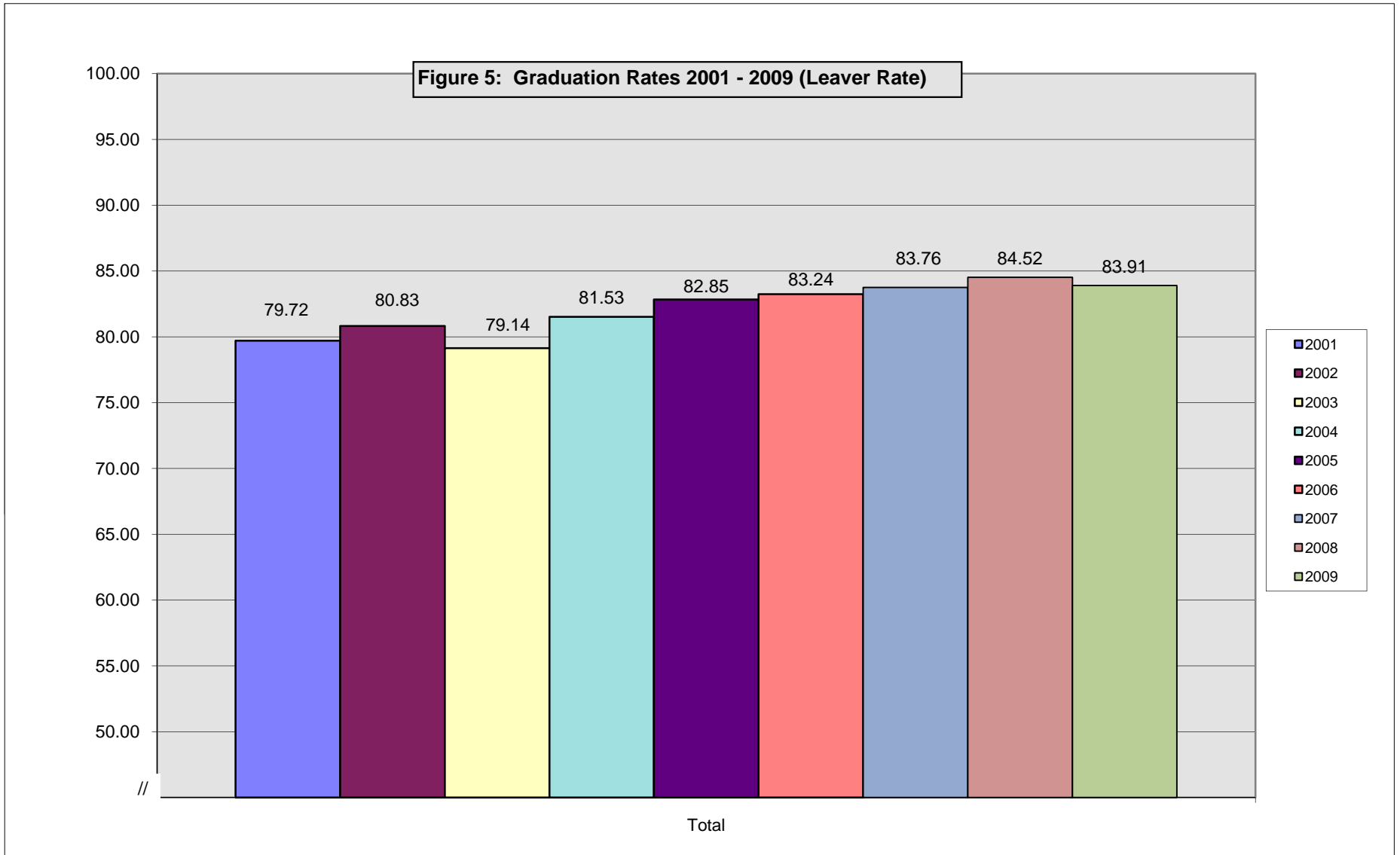


Figure 5: Graduation Rates 2001-2009 (Leaver Rate)

	2001	2002	2003	2004	2005	2006	2007	2008	2009
Total	79.72	80.83	79.14	81.53	82.85	83.24	83.76	84.52	83.91



Note: 2001 was the first year graduation rate was available. See Appendix B for an overview of Kentucky's transition to a cohort graduation rate model.

Appendix A

NONACADEMIC DATA - FORMULAS

Attendance Rate
(grades P-12)

$$\frac{\text{aggregate days of attendance}}{\text{aggregate days of attendance} + \text{aggregate days of absence}}$$

Retention Rate
(grades 4-12 only)

$$\frac{\text{number of students retained}}{\text{year end membership (SAAR**)}}$$

** SAAR = Superintendents Annual Attendance Report

Dropout Rate
(grades 7-12 only)

$$\frac{\text{number of dropouts}}{\text{fall membership (Growth Factor Report)}}$$

Transition to Adult Life
(high school graduates only)

$$\frac{\text{number of graduates deemed successful}}{\text{total number of graduates}}$$

NCES Leaver Graduation Rate

$$\frac{G4^{CY} + GIEP^{CY}}{G4^{CY} + GIEP^{CY} + G4P^{CY} + CERT^{CY} + D_{12}^{CY} + D_{11}^{CY-1} + D_{10}^{CY-2} + D_9^{CY-3}}$$

CY=current year

G4=graduates with a diploma within four years

GIEP=graduates with a diploma and an IEP that allows more than four years

G4P=graduates with a diploma in more than four years

CERT=completers with Certificates of Attainment or GEDs

D_{Grade}=dropouts in that grade

Appendix B

Kentucky Graduation Rate—Transition to a Cohort Model Overview

On October 28, 2008, then United States Secretary of Education Margaret Spellings announced final regulations to strengthen and clarify *No Child Left Behind* (NCLB), focusing on improved accountability and transparency, uniform and disaggregated graduation rates and improved parental notification for Supplemental Education Services and public school choice.

The federal regulations require that all states eventually report graduation rates for all students (aggregate) and for specific student groups (disaggregate) using a cohort model. Kentucky has worked with the United States Department of Education on a transitional plan for reporting graduation rate with a cohort model. The plan allows Kentucky time to implement completely the tracking of individual students in Infinite Campus.

Kentucky's Cohort Graduation Rate Plan has three steps to move the state to meeting federal expectations for reporting graduation rate with a cohort model. A critical element is the reporting of graduation rates in both the aggregate and disaggregated by group.

1. Use the current graduation rate (Leaver) for Adequate Yearly Progress (AYP) determinations in federal accountability reporting in summer 2010 (using data from school year/ "class of 2008-2009").
2. Use the Averaged Freshmen Graduation Rate (AFGR) as a transitional method to begin reporting graduation data disaggregated by group with the nonacademic data release in winter 2010-spring 2011 and for making AYP determinations in federal accountability reporting in summer 2011 (using data from school year/ "class of 2009-2010"). During 2011 federal NCLB reporting, data will be disaggregated by gender and ethnicity only. When complete student level membership data is available for export from the state student information system, graduation rates will be reported for all NCLB- required student groups. The AFGR will be used for federal accountability during the last year of the interim period and continue for two years (2011-2012 and 2012-2013) in the new assessment program.
3. Implement the Cohort Model with the nonacademic data release in fall 2013-winter 2014 and AYP determinations in summer 2014 (using data from school year/ "class of 2012-2013").

The following table summarizes the timeline for reporting of Kentucky’s graduation rate.

Reporting of Kentucky’s Graduation Rate					
Data from School Year “Class of...”	Nonacademic Public Release		Adequate Yearly Progress Determination in NCLB Reports (July/August)		
	Timeline	Graduation Rate Calculation Used	Timeline	Graduation Rate Calculation Used	State Goal Percentage Targets
2008-2009	May 2010	Leaver	Summer 2010	Leaver	86.75*
2009-2010	Fall 2010-Winter 2011	AFGR	Summer 2011	AFGR	82.32**
2010-2011	Fall 2011-Winter 2012	AFGR	Summer 2012	AFGR	To be defined in future regulation
2011-2012	Fall 2012-Winter 2013	AFGR	Summer 2013	AFGR	
2012-2013	Fall 2013-Winter 2014	Cohort	Summer 2014	Cohort	
*Goal defined in 703 KAR 5:001, Assessment and accountability definitions					
**Goal defined in 703 KAR 5:060, Interim assessment process					

Kentucky’s Current Method – NCES Leaver Graduation Rate

The NCES Leaver Graduation Rate takes the number of on-time graduates with a diploma plus the number of graduates with a diploma that have extended time written into their Individualized Education Plan (IEP) divided by the summation of the number of on-time graduates with a diploma; plus the number of graduates with a diploma that have extended time written into their IEPs; plus the number of graduates with a diploma who took more than four years to graduate; plus completers who received a certificate of attainment or GEDs; plus the number of 12th-grade dropouts for current year; plus the number of 11th-grade dropouts for the prior year; plus the number of 10th-grade dropouts for two years before; plus the number of 9th-grade dropouts for three years before.

The following formula is an example of the 2009 Leaver Rate.

$$\frac{2009 \text{ graduates with standard diploma in 4 years } plus \ 2009 \text{ graduates with standard diploma and an IEP specifying more than 4 years to graduate}}{2009 \text{ graduates with standard diplomas } plus \ 2009 \text{ certificates } plus \ 2009 \text{ grade 12 dropouts } plus \ 2008 \text{ grade 11 dropouts } plus \ 2007 \text{ grade 10 dropouts } plus \ 2006 \text{ grade 9 dropouts}}$$

In January 2010, Kentucky submitted documentation regarding the current graduation rate (definition, goals and annual targets) in accordance with final regulations that the U.S. Department of Education (USED) issued under Title I, Part A of the Elementary and Secondary Education Act (73 FR 64436 – Oct. 29, 2008) for the Graduation Rate Peer Review process. Kentucky provided an explanation of how the graduation rate goal represented an expectation for all high schools and how the annual targets demonstrate continuous and substantial improvement toward meeting or exceeding the state’s goal. While Kentucky’s annual graduation rate targets were approved, permitting “any improvement” from the prior year was not considered to meet the USED requirement of “continuous and substantial improvement.”

Results of the peer review require Kentucky modify the standard of “any improvement” from the prior year by establishing minimum growth. Starting in 2010, NCLB growth on the graduation rate means: a graduation rate that is equal to or greater than the corresponding annual goal; or, a graduation rate that exceeds that of the prior year **by a minimum of 2.00** (new requirement in bold). The goal for 2009 is 86.75. This change will be reflected in the September 2010 No Child Left Behind Adequate Yearly Progress reports.

Kentucky’s Current Leaver Graduation Rate Trends

Year	2001	2002	2003	2004	2005	2006	2007	2008	2009
Rate	79.72	80.83	79.15	81.29	82.86	83.26	83.72	84.52	83.91

Kentucky’s Transitional Method – Averaged Freshman Graduation Rate (AFGR)

The AFGR provides an estimate of the percentage of high school students who graduate on time. The rate uses aggregate student membership data to estimate the size of an incoming freshman class and aggregate counts of the number of regular diplomas awarded 4 years later. The incoming freshman class size is estimated by summing the membership in 9th grade for one year and 10th grade for the year after and then dividing by 2. The averaging is intended to account for higher grade retentions in the 9th grade in order to estimate the number of first-time 9th-graders. Although not as accurate as an on-time graduation rate computed from a cohort of students using student record data, this estimate of an on-time graduation rate can be computed with currently available data.

The following formula is an example of the 2010 Averaged Freshman Graduation Rate (AFGR).

$$\frac{2010 \text{ graduates with standard diploma in 4 years } plus \text{ 2010 graduates with standard diploma and an IEP specifying more than 4 years to graduate}}{\text{Membership in (Grade 9 in fall 2006 } plus \text{ Grade 10 in fall 2007)}/2}$$

Note: The AFGR will be used in Adequate Yearly Progress determinations for federal NCLB accountability in summer 2011. The National Center for Education Statistics (NCES) definition includes grade 8 in the denominator to estimate the freshmen class, but Kentucky will only use data from grades 9 and 10 in order to calculate consistent school and district rates for accountability purposes.

To meet NCLB graduation rate requirements in 2011 with AFGR, schools and districts will be required to meet the goal of 82.32 or close the gap between the previous year rate by at least 10 percent. The goal of 82.32 was derived using an ending graduation rate goal of 90. The KBE approved the interim goal of 82.32 as a component of 703 KAR 5:060, Interim assessment process. Graduation goals for reporting in 2012 and beyond must be determined by the Kentucky Board of Education during the regulation process for the new assessment system.

Kentucky’s Final Method – Cohort Graduation Rate

With implementation of the new state Student Information System (SIS) at the end of the 2008-2009, Kentucky will be able to track cohorts (first-time 9th graders) beginning with the 2009-2010 school year. This will allow Kentucky to track the 2009-2010 9th-grade cohort through the system until the cohort is scheduled to graduate four years later (2012-2013). Since the reporting of graduation rate is lagged by one year, the 2012-2013 Cohort Graduation Rate will be included in 2013-2014 Adequate Yearly Progress (AYP) report for NCLB.

The cohort formula is a four-year graduation rate (i.e., on-time graduates). Kentucky will report a four-year and five-year rate with the cohort model. The federal government must approve the inclusion of five-year graduates for federal AYP determinations. The four-year cohort graduation rate reflects graduates that complete in four years with no distinction made for students with Individualized Education Plans stating additional time is required for graduation. IEP students requiring more than four years would be included in the Extended-year Adjusted Cohort Graduation Rate.

Although it is possible changes may occur as the cohort graduation rate process is implemented in Kentucky, the following definitions are found in current federal guidance documents.

Four-year Adjusted Cohort Graduation Rate

The four-year adjusted cohort graduation rate is the number of students who graduate in four years with a regular high school diploma divided by the number of students who form the adjusted cohort for the graduating class. From the beginning of 9th grade, students who are entering that grade for the first time form a cohort that is subsequently “adjusted” by adding any students who transfer into the cohort later during the 9th grade and the next three years and subtracting any students who transfer out, emigrate to another country, or die during that same period.

The following formula provides an example of the four-year graduation rate for the cohort entering 9th grade for the first time in the fall of 2009 and graduating by the end of summer 2013.

$$\frac{\text{Number of cohort members who earned a regular high school diploma through summer 2013}}{\text{Number of first-time 9th graders in fall 2009 (starting cohort) plus students who transfer in, minus students who transfer out, emigrate, or die during school years 2009-2010, 2010-2011, 2011-2012, and through summer 2013}}$$

Extended-year Adjusted Cohort Graduation Rate

An extended-year adjusted cohort graduation rate is defined as the number of students who graduate in four years or more with a regular high school diploma divided by the number of students who form the adjusted cohort for the four-year graduation rate, provided that the adjustments add to the cohort all students who transfer into the cohort by the end of the year of graduation being considered and subtract students who transfer out, emigrate to another country, or are deceased by the end of that year.

The following formula provides an example of the calculation of a five-year adjusted cohort graduation rate based on the class entering 9th grade in fall 2009 and graduating five years later at the end of summer 2014.

$$\frac{\text{Numerator in the four-year adjusted cohort graduation rate plus the number of students from the cohort who earned a regular high school diploma through summer 2014}}{\text{Denominator in the four-year adjusted cohort graduation rate plus students who transferred in during the 2013-2014 school year minus students who transferred out, emigrated, or died during the 2013-2014 school year}}$$

Note: Based on the information available from other states that have transitioned to the Cohort Graduation Rate, results of Kentucky's cohort graduation rate can be expected to be slightly lower than the graduation rate with AFGR.