



Interim Performance Report

In March 2009, the Kentucky General Assembly passed Senate Bill 1 (SB1) that was subsequently signed into law by the Governor. SB1 calls for a significant overhaul of the state's assessment and accountability system. The new assessment system begins in the spring of 2012. The school years of 2008-2009, 2009-2010 and 2010-2011 are described in SB1 as an interim period. This three-year period allows Kentucky to develop the new assessment system and to carry on state and federal testing requirements.

The Interim Performance Report includes the Kentucky Core Content Test (KCCT) in Reading (grades 3-8 and 10), Mathematics (grades 3-8 and 11), Science (grades 4, 7 and 11), Social Studies (grades 5, 8 and 11) and Writing On-Demand (grades 5, 8 and 12). The KCCT is based on the Kentucky Core Content for Assessment (Version 4.1) and contains multiple choice and open response questions. The Writing On-Demand test uses writing prompts that require students to craft a piece of writing in a 60 minute period.

The KCCT is developed under the direction of content advisory committees of Kentucky educators who draft, review and select test questions. All test items are reviewed by a bias review committee to enhance the fairness of items for all Kentucky students.

The KCCT continues to fulfill the requirements of the federal statute known as the No Child Left Behind Act of 2001. A separate accountability report for No Child Left Behind (NCLB) is published by the Kentucky Department of Education.

The Interim Performance Report focuses entirely on the five state-required content areas and provides data for schools or districts. The data in this report is not used directly for state accountability; although, these results can fulfill the requirements of Senate Bill 168 from 2002 and may be used by schools or districts for their own local accountability needs.

Performance standards are based on descriptions of Novice, Apprentice, Proficient and Distinguished (NAPD) student performance levels specific to the content area and grade being assessed. The performance standards, in conjunction with Kentucky's Core Content for Assessment, should allow instruction to better focus on the content area to be taught and on how well students must demonstrate achievement in each content area.

Reporting Changes for 2009

Based on SB1, Kentucky will not be reporting state accountability and academic indices as in the past. The report does have several familiar pages with performance level (NAPD) trend, core content and disaggregation data per content area. Districts and schools will still see distributions of how students scored in the Novice (with sublevels), Apprentice (with sublevels), Proficient and Distinguished performance levels.

Confidentiality Changes

Due to federal regulations around the Family Education Rights and Privacy Act (FERPA), the numbers of students have been removed. Though there is a need to report as much data as possible, there is also a paramount need to maintain the confidential aspects of individual scores. When scores are reported in what is commonly called "small cells" where very few students may be categorized, there is the possibility of revealing individual scores when numbers are reported. Numbers are reported to each district in a confidential report that accompanies the public Interim Performance Report.

2008-2009

INTERIM PERFORMANCE REPORT

School: Tates Creek High School

District: Fayette County

Code: 165105

Grade: 09-12

CONTENTS OF THIS REPORT

Introduction	1
Academic Trend Data	
Reading Results	2-4
Mathematics Results	5-7
Science Results	8-10
Social Studies Results	11-13
Writing Results	14-16

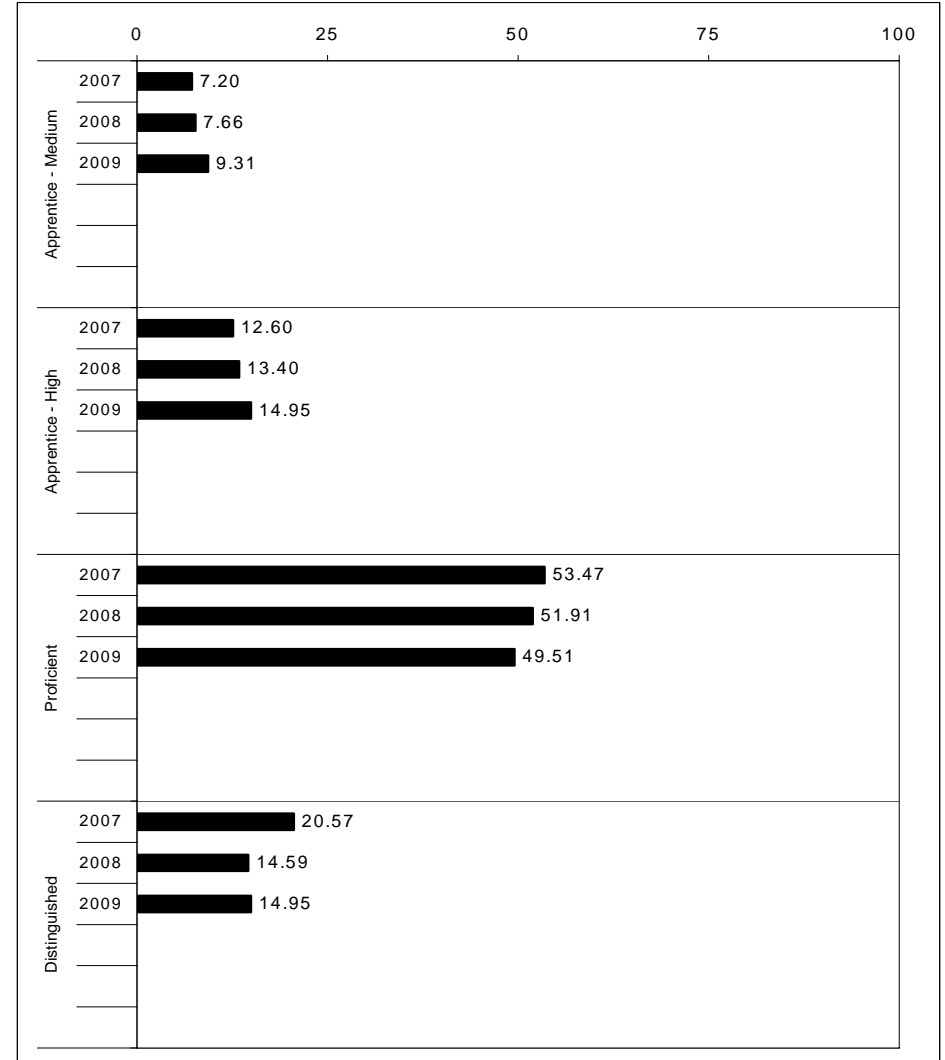
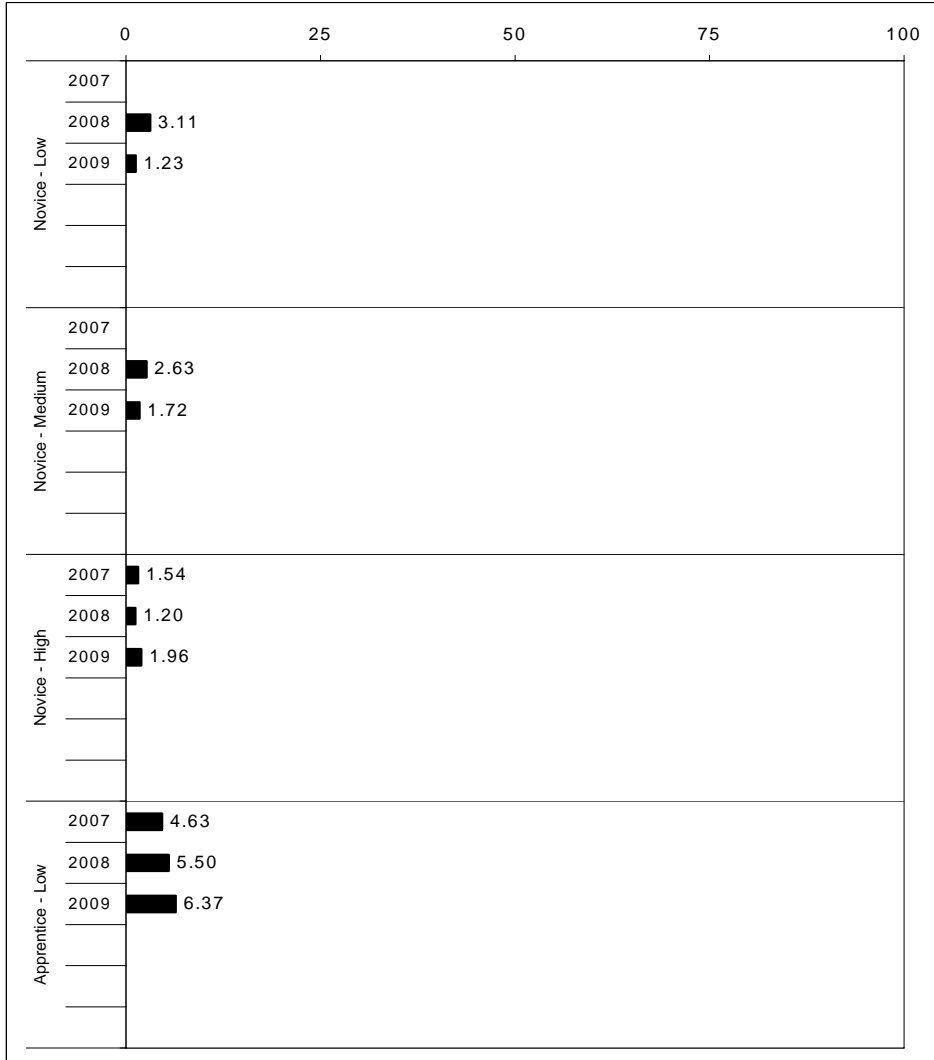
For more information, refer to the 2009 Interim Assessment Interpretative Guide on the Kentucky Department of Education Web site (www.education.ky.gov).





2008-2009
INTERIM PERFORMANCE REPORT
READING TREND DATA
Performance Level Percents

School: Tates Creek High School
 District: Fayette County
 Code: 165105
 Grade: HIGH



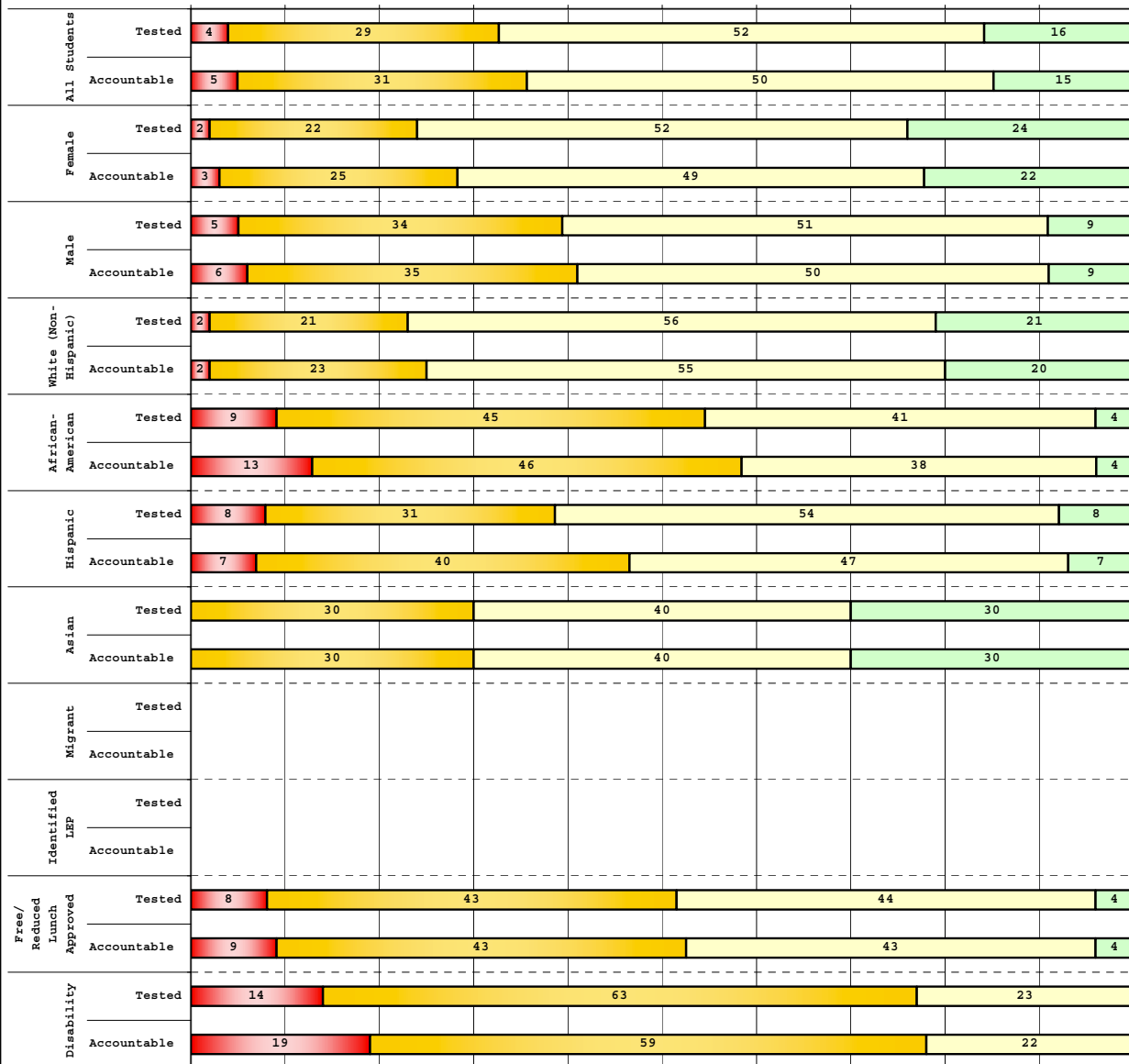
The horizontal bar represents the percent of students scoring at a performance level within a particular year. Percentages may not sum to 100% due to rounding.



**2008-2009
INTERIM PERFORMANCE REPORT
READING DISAGGREGATION
Performance Level Percents**

School: Tates Creek High School
District: Fayette County
Code: 165105
Grade: 10

0% 10% 20% 30% 40% 50% 60% 70% 80% 90% 100%



Tested Students

	N%	A%	P%	D%	P+D%
Total	4	29	52	16	67.44
Female	2	22	52	24	75.72
Male	5	34	51	9	60.75
White (Non-Hispanic)	2	21	56	21	76.74
African-American	9	45	41	4	45.26
Hispanic	8	31	54	8	61.54
Asian	0	30	40	30	70.00
Other	0	55	45	0	45.45
Title I					
Migrant					
Identified LEP					Unreportable*
Extended Sch Services					
Gifted/Talented					
F/R Lunch Approved	8	43	44	4	48.67
Vocational/2 Credits	4	29	56	11	66.88
Disability	14	63	23	0	22.86
Alternate Assessment					Unreportable*

NCLB Accountable Students

	N%	A%	P%	D%	P+D%
Total	5	31	50	15	64.46
Female	3	25	49	22	71.35
Male	6	35	50	9	58.74
White (Non-Hispanic)	2	23	55	20	74.91
African-American	13	46	38	4	41.35
Hispanic	7	40	47	7	53.33
Asian	0	30	40	30	70.00
Other	8	50	42	0	41.67
Title I					
Migrant					
Identified LEP					Unreportable*
Extended Sch Services					
Gifted/Talented					
F/R Lunch Approved	9	43	43	4	47.46
Vocational/2 Credits	4	29	56	11	66.88
Disability	19	59	22	0	21.62
Alternate Assessment					Unreportable*

■ Novice
■ Apprentice
■ Proficient
■ Distinguished

Percentage may not sum to 100% due to rounding. 'Unreportable*' indicates subpopulations with fewer than 10 students or subpopulations where all students score at the same performance level.



2008-2009
INTERIM PERFORMANCE REPORT
READING CORE CONTENT

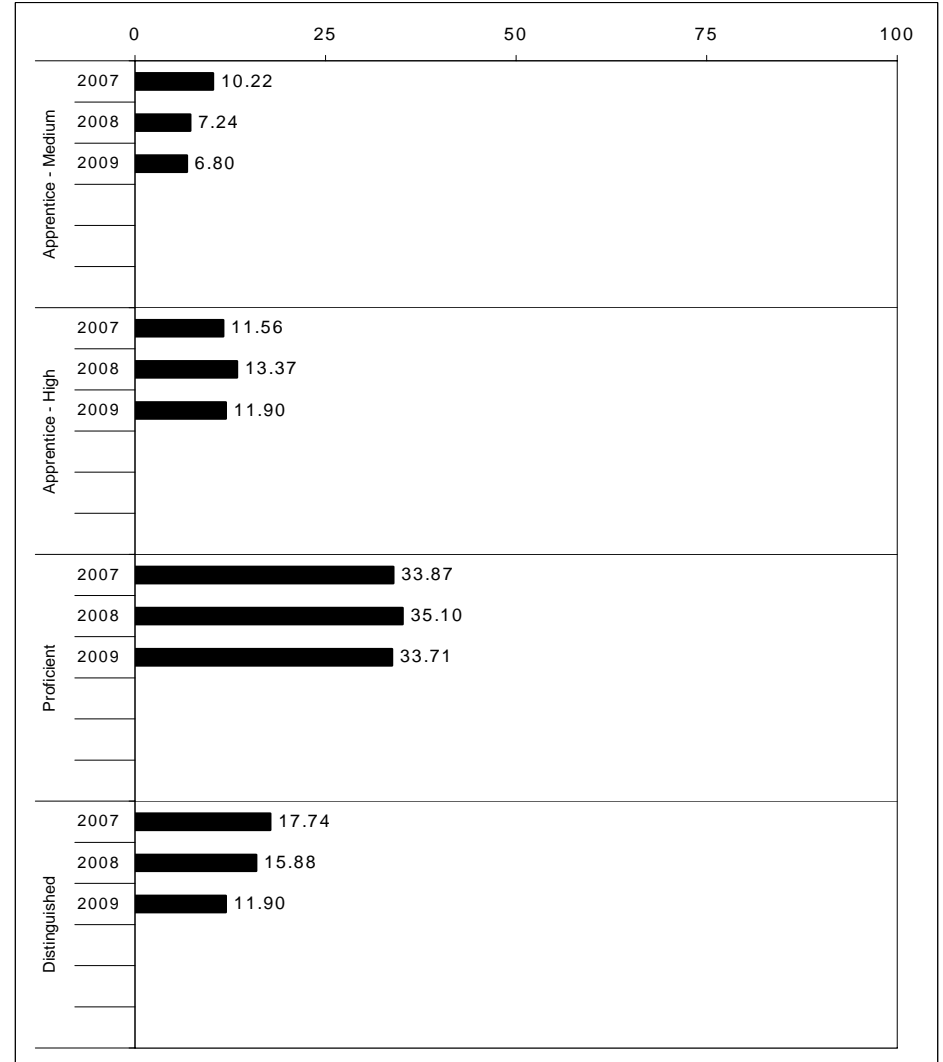
School: Tates Creek High School
 District: Fayette County
 Code: 165105
 Grade: 10

	No. Items	No. Observations	SCHOOL								Std. Err.	No. Observations	STATE								School -State Mean
			B	0	1	2	3	4	Mean	B			0	1	2	3	4	Mean			
OPEN RESPONSE																					
2.0.x - Developing Understanding	2	467	0	1	10	49	29	11	2.4	0.0	56,492	0	1	13	48	28	10	2.3	0.1		
3.0.x - Interpreting Text	4	602	1	2	12	36	32	17	2.5	0.0	72,472	1	3	13	44	29	11	2.3	0.2		
5.0.x - Critical Stance	2	134	2	3	17	33	28	17	2.3	0.1	16,533	1	6	17	43	25	9	2.1	0.2		
MULTIPLE CHOICE																					
1.0.x - Forming a Foundation	21	2,059	81	19	1				0.81	0.01	249,926	79	21	0				0.79	0.02		
2.0.x - Developing Understanding	78	7,260	76	23	1				0.76	0.01	875,285	75	25	0				0.75	0.01		
3.0.x - Interpreting Text	18	1,521	76	23	1				0.76	0.01	184,813	74	26	0				0.74	0.02		
5.0.x - Critical Stance	28	3,195	73	26	0				0.73	0.01	387,431	71	29	0				0.71	0.02		



2008-2009
INTERIM PERFORMANCE REPORT
MATHEMATICS TREND DATA
Performance Level Percents

School: Tates Creek High School
 District: Fayette County
 Code: 165105
 Grade: HIGH



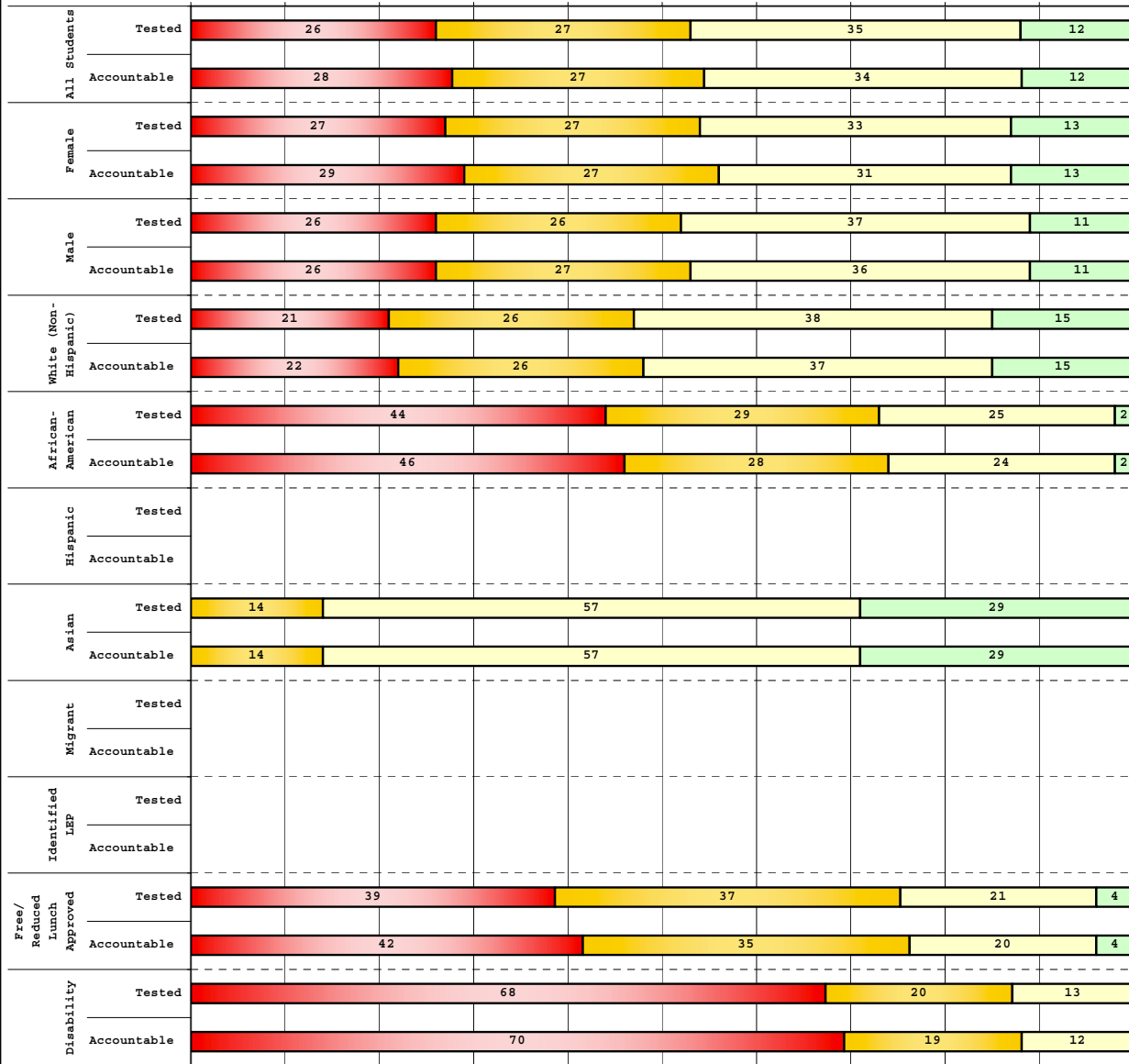
The horizontal bar represents the percent of students scoring at a performance level within a particular year. Percentages may not sum to 100% due to rounding.



**2008-2009
INTERIM PERFORMANCE REPORT
MATHEMATICS DISAGGREGATION
Performance Level Percents**

School: Tates Creek High School
District: Fayette County
Code: 165105
Grade: 11

0% 10% 20% 30% 40% 50% 60% 70% 80% 90% 100%

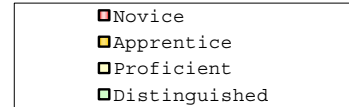


Tested Students

	N%	A%	P%	D%	P+D%
Total	26	27	35	12	46.80
Female	27	27	33	13	45.71
Male	26	26	37	11	47.93
White (Non-Hispanic)	21	26	38	15	52.56
African-American	44	29	25	2	27.06
Hispanic	Unreportable*				
Asian	0	14	57	29	85.71
Other	Unreportable*				
Title I	Unreportable*				
Migrant	Unreportable*				
Identified LEP	Unreportable*				
Extended Sch Services	Unreportable*				
Gifted/Talented	Unreportable*				
F/R Lunch Approved	39	37	21	4	24.75
Vocational/2 Credits	28	30	36	6	41.82
Disability	68	20	13	0	12.50
Alternate Assessment	Unreportable*				

NCLB Accountable Students

	N%	A%	P%	D%	P+D%
Total	28	27	34	12	45.61
Female	29	27	31	13	44.20
Male	26	27	36	11	47.09
White (Non-Hispanic)	22	26	37	15	51.68
African-American	46	28	24	2	25.84
Hispanic	Unreportable*				
Asian	0	14	57	29	85.71
Other	Unreportable*				
Title I	Unreportable*				
Migrant	Unreportable*				
Identified LEP	Unreportable*				
Extended Sch Services	Unreportable*				
Gifted/Talented	Unreportable*				
F/R Lunch Approved	42	35	20	4	23.58
Vocational/2 Credits	28	30	36	6	41.82
Disability	70	19	12	0	11.63
Alternate Assessment	Unreportable*				



Percentage may not sum to 100% due to rounding. 'Unreportable*' indicates subpopulations with fewer than 10 students or subpopulations where all students score at the same performance level.



2008-2009
INTERIM PERFORMANCE REPORT
MATHEMATICS CORE CONTENT

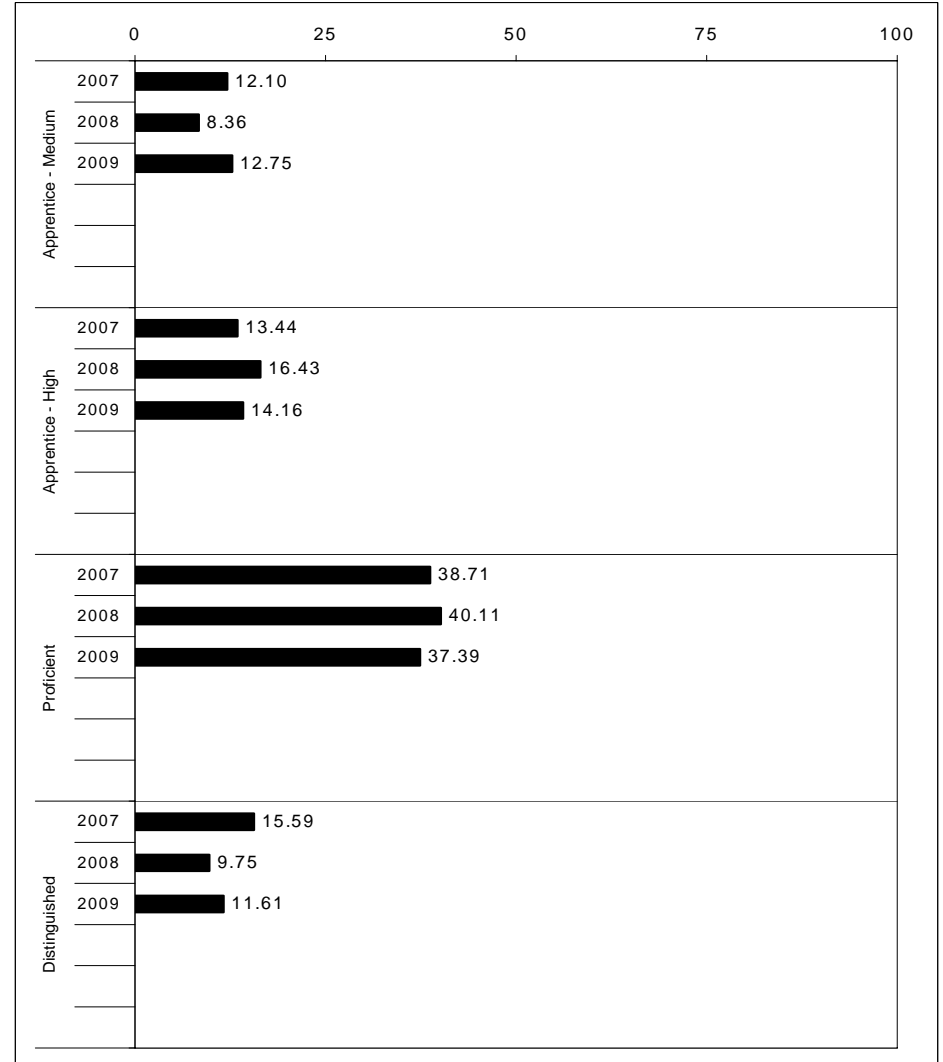
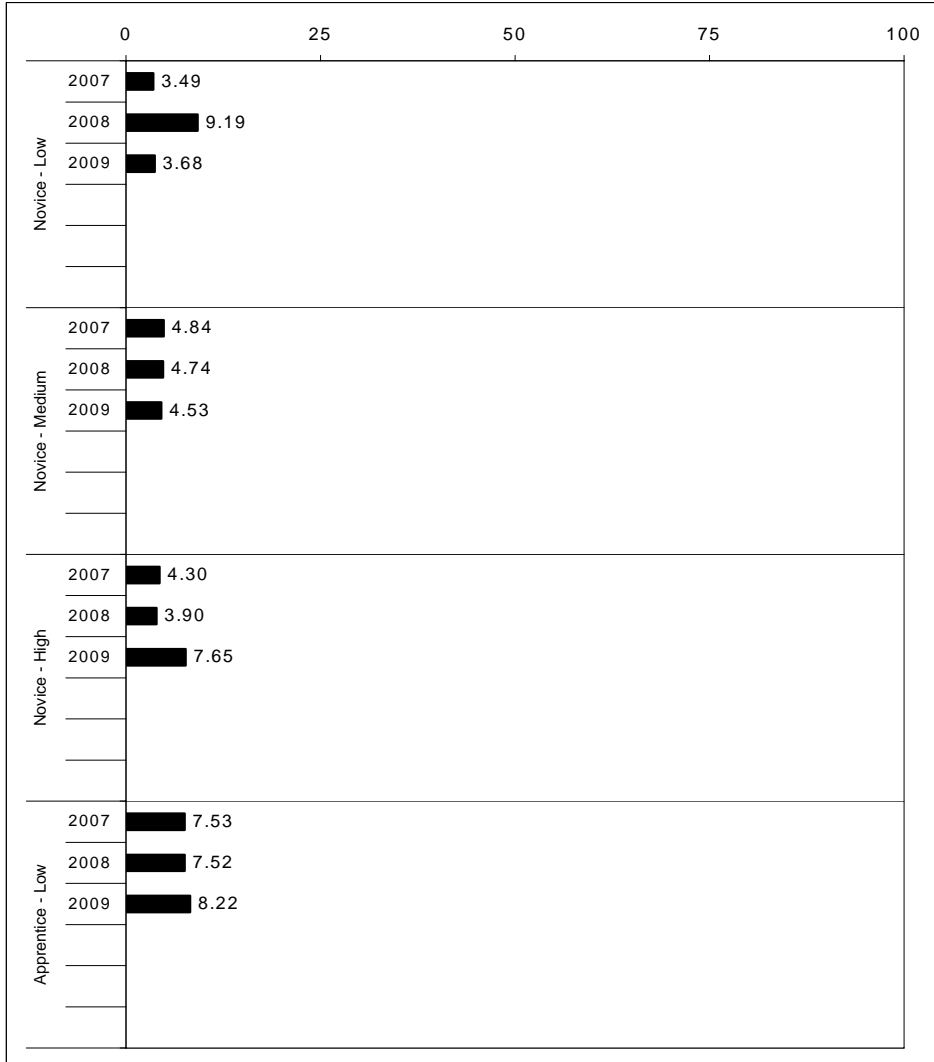
School: Tates Creek High School
 District: Fayette County
 Code: 165105
 Grade: 11

	No. Items	No. Observations	SCHOOL								Std. Err.	No. Observations	STATE								School -State Mean
			B	0	1	2	3	4	Mean	B			0	1	2	3	4	Mean			
OPEN RESPONSE																					
1.x.x - Number Prop Oper	3	458	3	31	38	13	6	8	1.2	0.0	58,157	1	35	40	14	5	4	1.0	0.2		
2.x.x - Measurement	1	59	7	36	7	27	14	10	1.4	0.2	7,732	2	41	8	27	11	10	1.4	0.0		
3.x.x - Geometry	2	114	3	30	31	14	11	11	1.4	0.1	14,423	1	32	41	12	8	6	1.1	0.3		
4.x.x - Data Analysis & Probabilit	1	347	2	7	64	18	7	3	1.3	0.1	43,744	1	11	58	16	11	4	1.4	-0.1		
5.x.x - Algebraic Thinking	4	812	3	24	28	20	11	14	1.6	0.0	101,871	1	26	31	22	9	11	1.5	0.1		
MULTIPLE CHOICE																					
1.x.x - Number Prop Oper	15	2,307	Correct	Incorrect	Omit/Mult				0.67	0.01	291,257	Correct	Incorrect	Omit/Mult				0.65	0.02		
2.x.x - Measurement	8	1,334	67	33	0				0.52	0.01	168,327	65	35	0				0.47	0.05		
3.x.x - Geometry	13	2,196	52	48	0				0.60	0.01	276,322	47	52	0				0.54	0.06		
4.x.x - Data Analysis & Probabilit	11	1,506	60	40	0				0.61	0.01	189,924	54	46	0				0.58	0.03		
5.x.x - Algebraic Thinking	28	3,935	61	39	0				0.53	0.01	496,648	58	42	0				0.53	0.00		
			53	47	0							53	47	0							



2008-2009
INTERIM PERFORMANCE REPORT
SCIENCE TREND DATA
Performance Level Percents

School: Tates Creek High School
 District: Fayette County
 Code: 165105
 Grade: 11

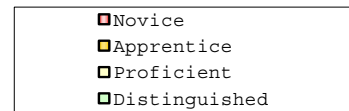
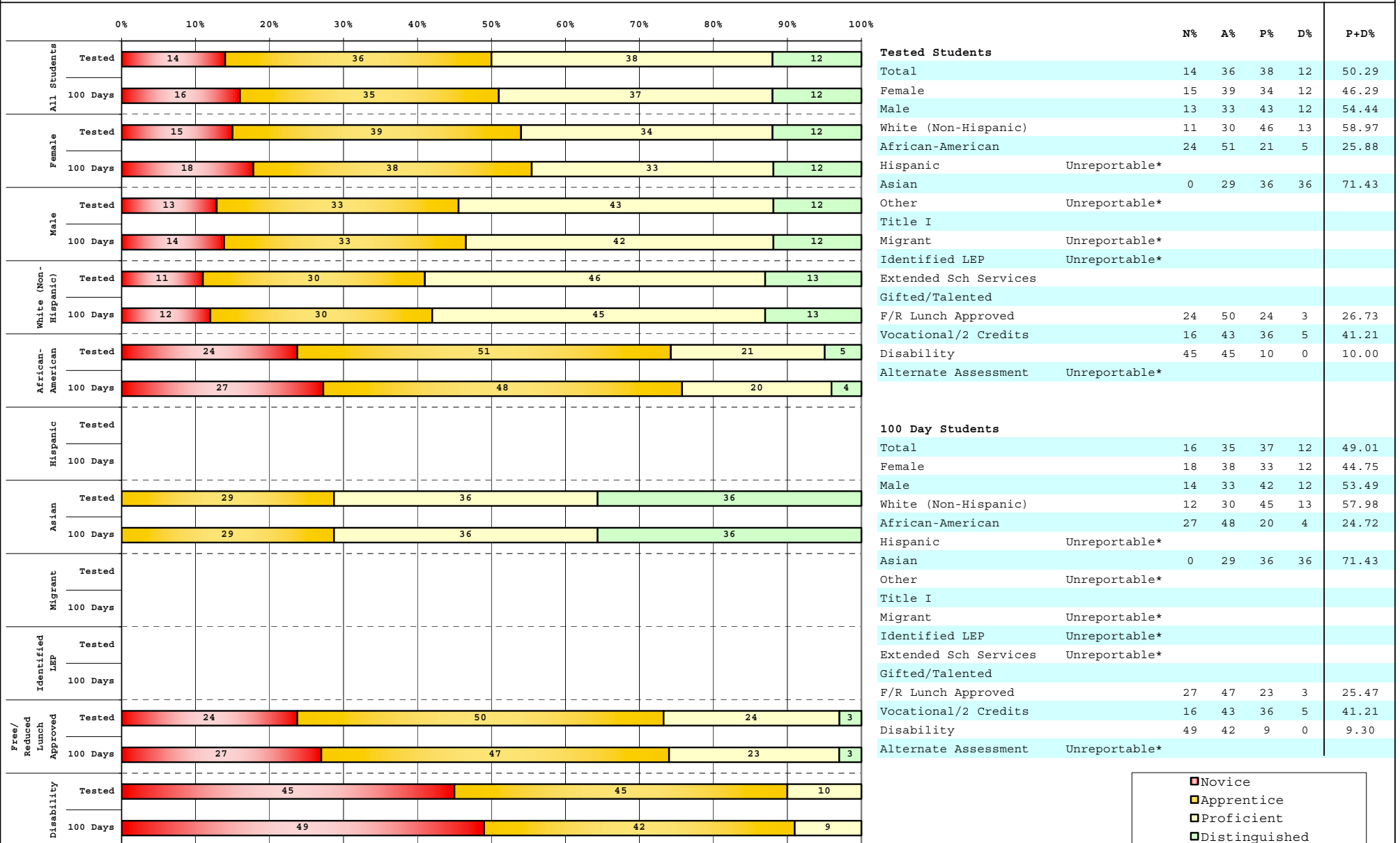


The horizontal bar represents the percent of students scoring at a performance level within a particular year. Percentages may not sum to 100% due to rounding.



**2008-2009
INTERIM PERFORMANCE REPORT
SCIENCE DISAGGREGATION
Performance Level Percents**

School: Tates Creek High School
District: Fayette County
Code: 165105
Grade: 11



Percentage may not sum to 100% due to rounding. 'Unreportable*' indicates subpopulations with fewer than 10 students or subpopulations where all students score at the same performance level.



2008-2009
INTERIM PERFORMANCE REPORT
SCIENCE CORE CONTENT

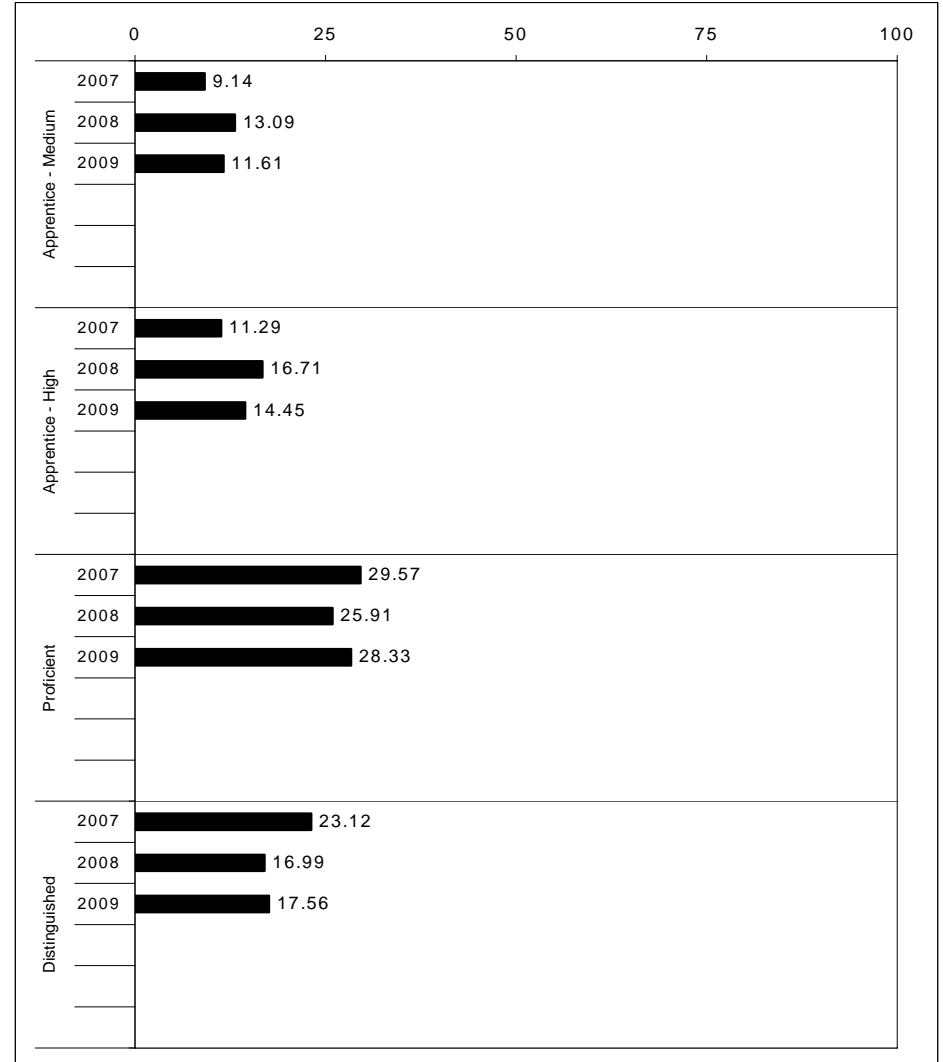
School: Tates Creek High School
 District: Fayette County
 Code: 165105
 Grade: 11

	No. Items	No. Observations	SCHOOL							Mean	Std. Err.	No. Observations	STATE							Mean	School -State Mean
			B	0	1	2	3	4	Percents				B	0	1	2	3	4	Percents		
OPEN RESPONSE																					
1.x.x - Physical Science	2	115	2	14	33	27	16	9	1.7	0.1	14,423	1	16	32	31	12	8	1.6	0.1		
2.x.x - Earth Space Science	2	407	1	10	13	34	29	13	2.2	0.1	50,954	1	14	20	32	26	8	1.9	0.3		
3.x.x - Biological Science	3	460	2	31	27	22	11	6	1.3	0.1	58,124	2	38	31	18	7	3	1.0	0.3		
4.x.x - Unifying Concepts	3	466	2	10	50	22	12	5	1.5	0.0	58,685	1	11	52	23	10	3	1.4	0.1		
MULTIPLE CHOICE																					
1.x.x - Physical Science	14	2,252	61	39	0				0.61	0.01	284,043	57	42	0				0.57	0.04		
2.x.x - Earth Space Science	14	2,259	61	38	0				0.61	0.01	284,629	56	43	0				0.56	0.05		
3.x.x - Biological Science	18	2,776	50	50	0				0.50	0.01	349,952	46	53	0				0.46	0.04		
4.x.x - Unifying Concepts	26	3,817	59	41	0				0.59	0.01	481,184	53	47	0				0.53	0.06		



2008-2009
INTERIM PERFORMANCE REPORT
SOCIAL STUDIES TREND DATA
Performance Level Percents

School: Tates Creek High School
 District: Fayette County
 Code: 165105
 Grade: 11

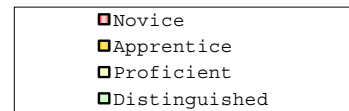
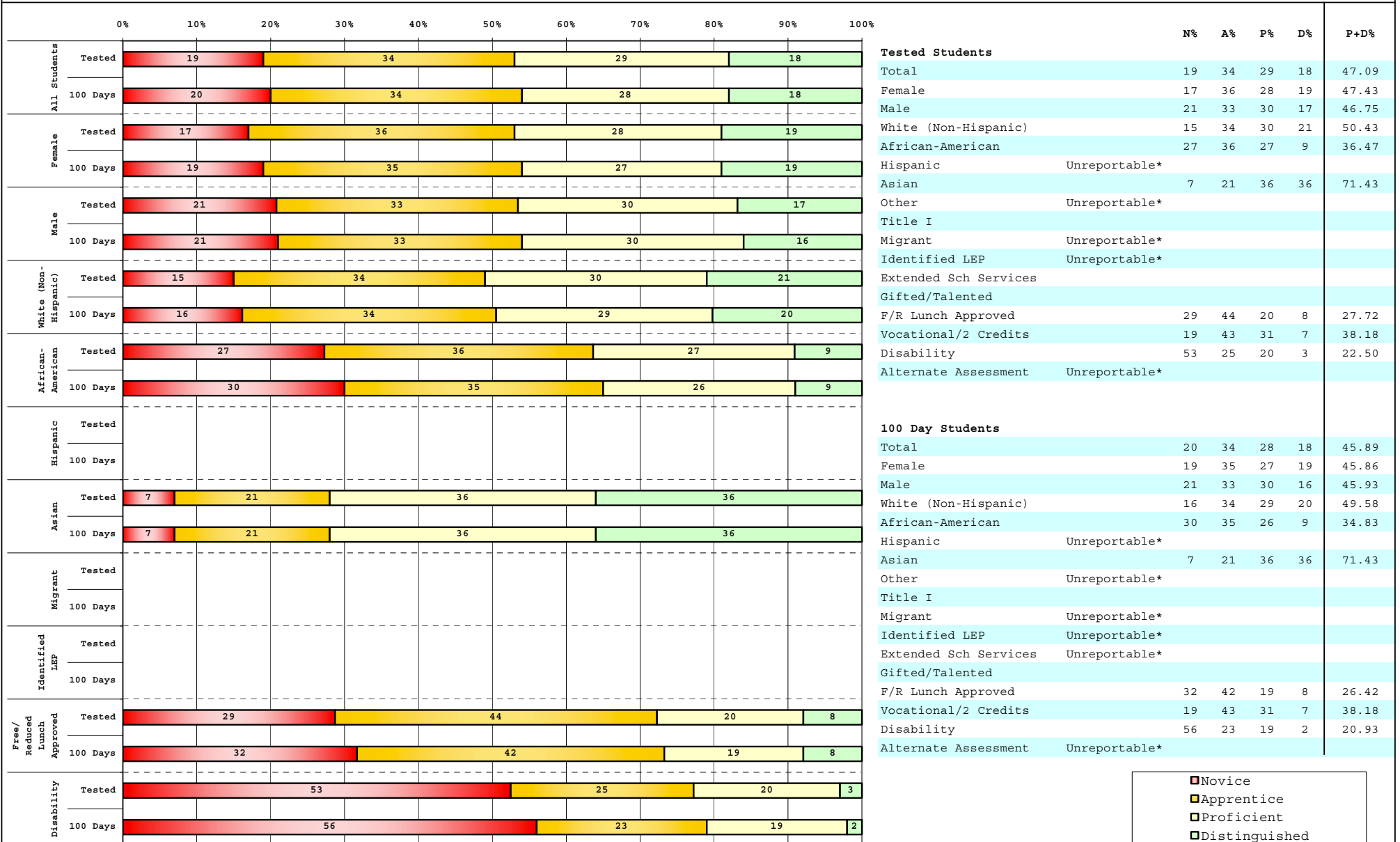


The horizontal bar represents the percent of students scoring at a performance level within a particular year. Percentages may not sum to 100% due to rounding.



2008-2009
INTERIM PERFORMANCE REPORT
SOCIAL STUDIES DISAGGREGATION
Performance Level Percents

School: Tates Creek High School
 District: Fayette County
 Code: 165105
 Grade: 11



Percentage may not sum to 100% due to rounding. 'Unreportable*' indicates subpopulations with fewer than 10 students or subpopulations where all students score at the same performance level.



2008-2009
INTERIM PERFORMANCE REPORT
SOCIAL STUDIES CORE CONTENT

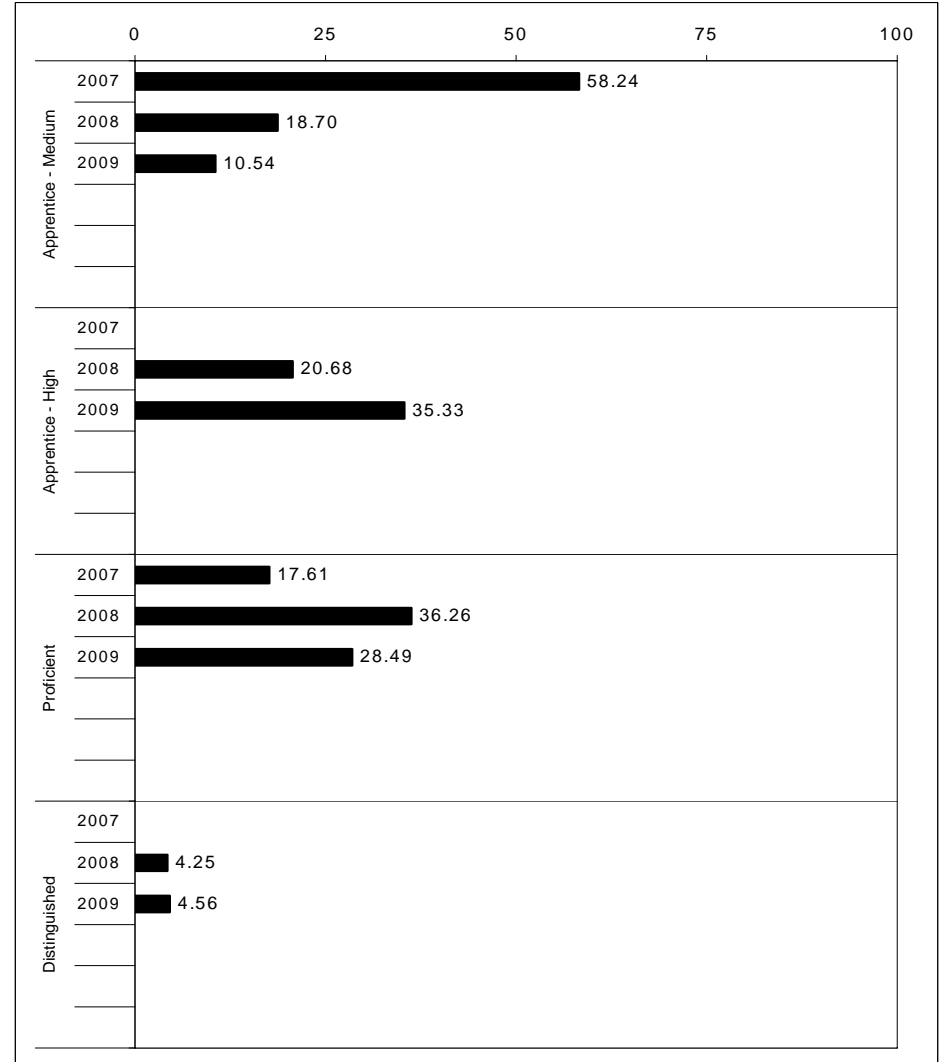
School: Tates Creek High School
District: Fayette County
Code: 165105
Grade: 11

	No. Items	No. Observations	SCHOOL							Mean	Std. Err.	No. Observations	STATE							Mean	School -State Mean
			B	0	1	2	3	4	B				0	1	2	3	4				
OPEN RESPONSE																					
1.x.x - Government & Civics	2	406	2	8	22	36	26	6	1.9	0.1	51,476	1	11	24	40	18	5	1.8	0.1		
2.x.x - Cultures & Societies	2	406	5	19	21	34	16	5	1.6	0.1	50,960	2	18	25	35	16	5	1.6	0.0		
3.x.x - Economics	1	60	5	17	22	22	23	12	1.8	0.2	7,210	1	23	26	28	16	6	1.5	0.3		
4.x.x - Geography	1	56	2	13	32	25	25	4	1.7	0.1	7,206	2	16	33	31	14	3	1.5	0.2		
5.x.x - Historical Perspective	5	866	4	14	28	34	15	5	1.6	0.0	109,600	2	14	30	37	13	4	1.6	0.0		
MULTIPLE CHOICE																					
1.x.x - Government & Civics	16	2,368	57	41	Omit/Mult			2	0.57	0.01	298,998	56	44	Omit/Mult			1	0.56	0.01		
2.x.x - Cultures & Societies	7	982	68	31	Omit/Mult			1	0.68	0.02	124,016	62	37	Omit/Mult			0	0.62	0.06		
3.x.x - Economics	12	2,138	68	31	Omit/Mult			1	0.68	0.01	269,670	65	34	Omit/Mult			1	0.65	0.03		
4.x.x - Geography	11	1,794	62	37	Omit/Mult			1	0.62	0.01	225,936	62	38	Omit/Mult			0	0.62	0.00		
5.x.x - Historical Perspective	39	6,020	63	36	Omit/Mult			1	0.63	0.01	757,994	61	38	Omit/Mult			0	0.61	0.02		



2008-2009
INTERIM PERFORMANCE REPORT
WRITING ON-DEMAND TREND DATA
Performance Level Percents

School: Tates Creek High School
 District: Fayette County
 Code: 165105
 Grade: 12

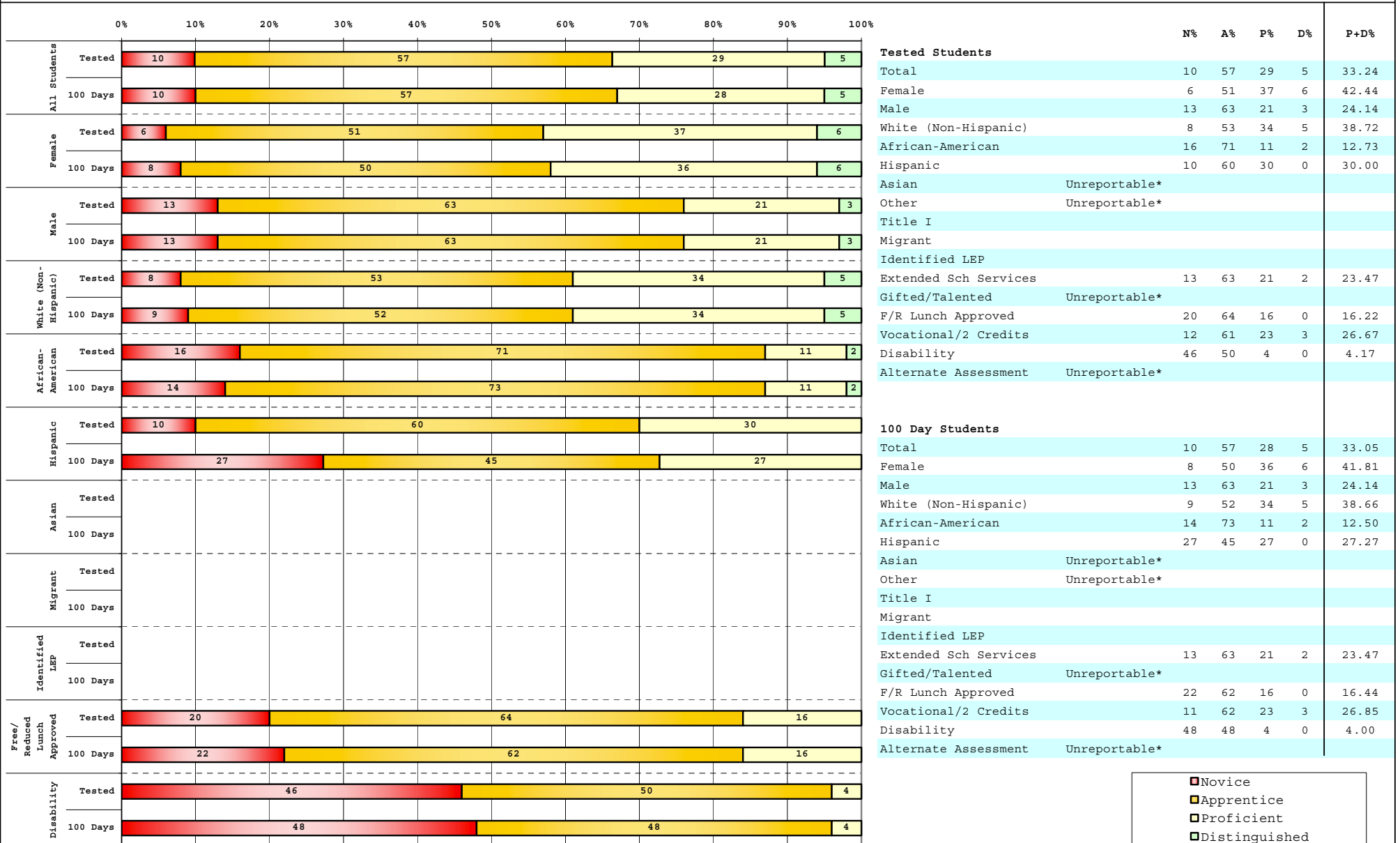


The horizontal bar represents the percent of students scoring at a performance level within a particular year. Percentages may not sum to 100% due to rounding.



2008-2009
INTERIM PERFORMANCE REPORT
WRITING ON-DEMAND DISAGGREGATION
Performance Level Percents

School: Tates Creek High School
 District: Fayette County
 Code: 165105
 Grade: 12



■	Novice
■	Apprentice
■	Proficient
■	Distinguished

Percentage may not sum to 100% due to rounding. 'Unreportable*' indicates subpopulations with fewer than 10 students or subpopulations where all students score at the same performance level.



2008-2009
INTERIM PERFORMANCE REPORT
WRITING ON-DEMAND CORE CONTENT

School: Tates Creek High School
District: Fayette County
Code: 165105
Grade: 12

WRITING PROMPT	SCHOOL												STATE										School	
	No. Observations	Percents											Mean	Percents										Mean
	B	0	1	2	3	4	5	6	7	8	Mean	B	0	1	2	3	4	5	6	7	8	Mean		
Inform																								
1.X.X - Content	116	0	3	1	8	15	29	23	13	6	2	4.28	0	1	2	10	13	35	17	16	4	2	4.23	0.05
2.X.X - Structure	116	0	3	2	9	14	31	24	13	3	1	4.09	0	2	3	10	14	34	17	14	4	2	4.07	0.02
3.X.X - Convention	116	0	0	0	13	12	36	20	14	3	2	4.27	0	0	0	14	14	36	17	14	4	2	4.20	0.07
Narrate for a purpose																								
1.X.X - Content	55	0	0	2	7	2	36	18	29	4	2	4.73	0	1	2	9	12	35	17	18	5	2	4.34	0.39
2.X.X - Structure	55	0	0	0	11	5	31	25	22	5	0	4.58	0	2	3	10	13	34	17	16	4	2	4.17	0.41
3.X.X - Convention	55	0	0	0	9	5	31	24	25	5	0	4.67	0	0	0	12	13	35	17	16	4	2	4.30	0.37
Persuade																								
1.X.X - Content	529	1	1	1	12	11	37	16	15	4	2	4.14	0	1	2	10	12	36	17	16	4	2	4.27	-0.13
2.X.X - Structure	529	1	2	2	13	12	39	15	11	3	2	3.94	0	2	3	10	13	36	17	14	3	2	4.11	-0.17
3.X.X - Convention	529	1	0	0	12	13	40	16	13	3	1	4.15	0	0	0	12	13	38	18	14	4	2	4.25	-0.10