



Interim Performance Report

In March 2009, the Kentucky General Assembly passed Senate Bill 1 (SB1) that was subsequently signed into law by the Governor. SB1 calls for a significant overhaul of the state's assessment and accountability system. The new assessment system begins in the spring of 2012. The school years of 2008-2009, 2009-2010 and 2010-2011 are described in SB1 as an interim period. This three-year period allows Kentucky to develop the new assessment system and to carry on state and federal testing requirements.

The Interim Performance Report includes the Kentucky Core Content Test (KCCT) in Reading (grades 3-8 and 10), Mathematics (grades 3-8 and 11), Science (grades 4, 7 and 11), Social Studies (grades 5, 8 and 11) and Writing On-Demand (grades 5, 8 and 12). The KCCT is based on the Kentucky Core Content for Assessment (Version 4.1) and contains multiple choice and open response questions. The Writing On-Demand test uses writing prompts that require students to craft a piece of writing in a 60 minute period.

The KCCT is developed under the direction of content advisory committees of Kentucky educators who draft, review and select test questions. All test items are reviewed by a bias review committee to enhance the fairness of items for all Kentucky students.

The KCCT continues to fulfill the requirements of the federal statute known as the No Child Left Behind Act of 2001. A separate accountability report for No Child Left Behind (NCLB) is published by the Kentucky Department of Education.

The Interim Performance Report focuses entirely on the five state-required content areas and provides data for schools or districts. The data in this report is not used directly for state accountability; although, these results can fulfill the requirements of Senate Bill 168 from 2002 and may be used by schools or districts for their own local accountability needs.

Performance standards are based on descriptions of Novice, Apprentice, Proficient and Distinguished (NAPD) student performance levels specific to the content area and grade being assessed. The performance standards, in conjunction with Kentucky's Core Content for Assessment, should allow instruction to better focus on the content area to be taught and on how well students must demonstrate achievement in each content area.

Reporting Changes for 2009

Based on SB1, Kentucky will not be reporting state accountability and academic indices as in the past. The report does have several familiar pages with performance level (NAPD) trend, core content and disaggregation data per content area. Districts and schools will still see distributions of how students scored in the Novice (with sublevels), Apprentice (with sublevels), Proficient and Distinguished performance levels.

Confidentiality Changes

Due to federal regulations around the Family Education Rights and Privacy Act (FERPA), the numbers of students have been removed. Though there is a need to report as much data as possible, there is also a paramount need to maintain the confidential aspects of individual scores. When scores are reported in what is commonly called "small cells" where very few students may be categorized, there is the possibility of revealing individual scores when numbers are reported. Numbers are reported to each district in a confidential report that accompanies the public Interim Performance Report.

2008-2009

INTERIM PERFORMANCE REPORT

School: Yates Elementary School

District: Fayette County

Code: 165140

Grade: PRIMARY-05

CONTENTS OF THIS REPORT

Introduction	1
Academic Trend Data	
Reading Results	2-8
Mathematics Results	9-15
Science Results	16-18
Social Studies Results	19-21
Writing Results	22-24

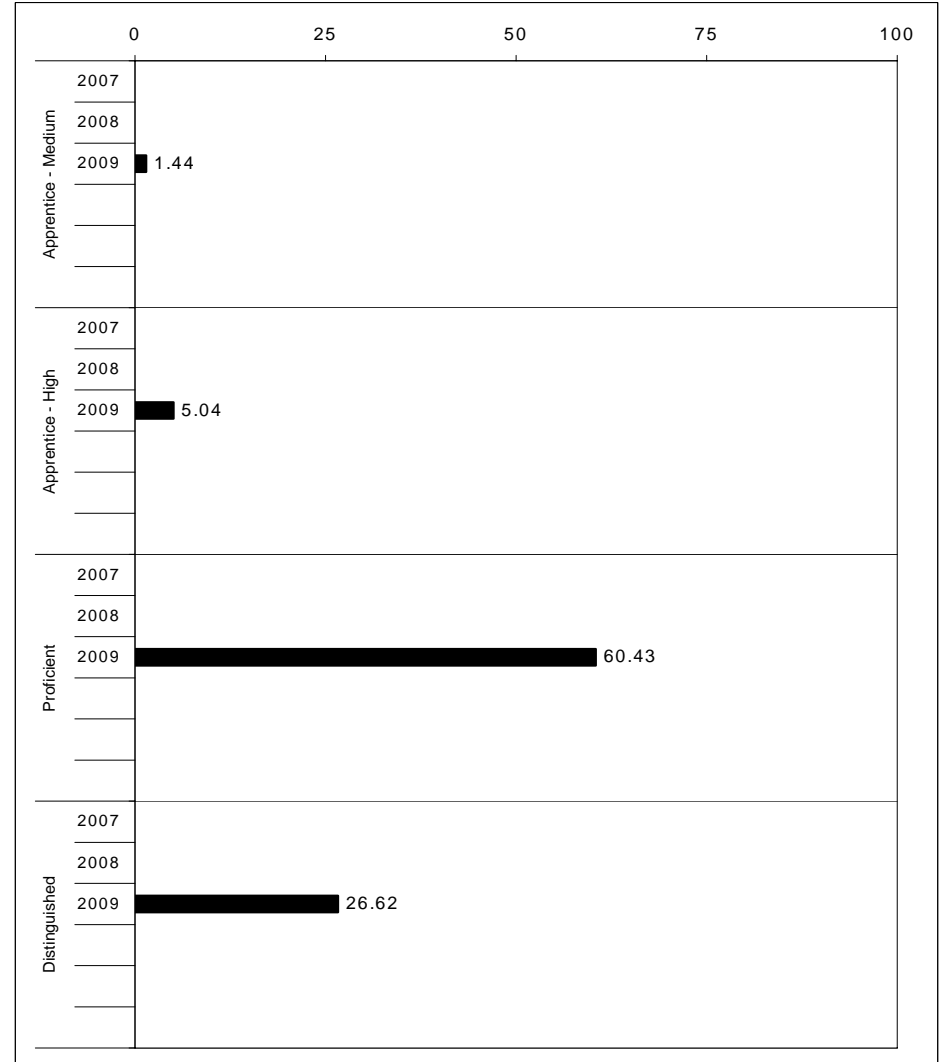
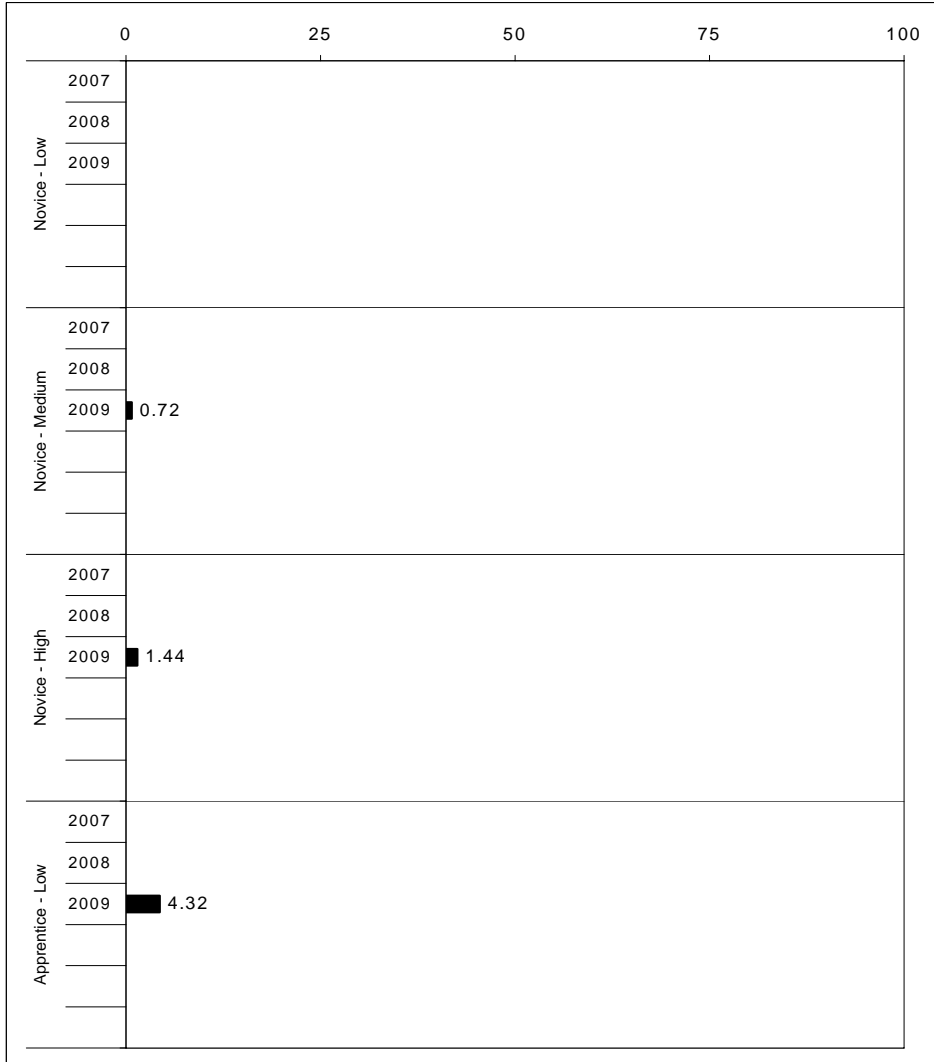
For more information, refer to the 2009 Interim Assessment Interpretative Guide on the Kentucky Department of Education Web site (www.education.ky.gov).





2008-2009
INTERIM PERFORMANCE REPORT
READING TREND DATA
Performance Level Percents

School: Yates Elementary School
 District: Fayette County
 Code: 165140
 Grade: ELEMENTARY



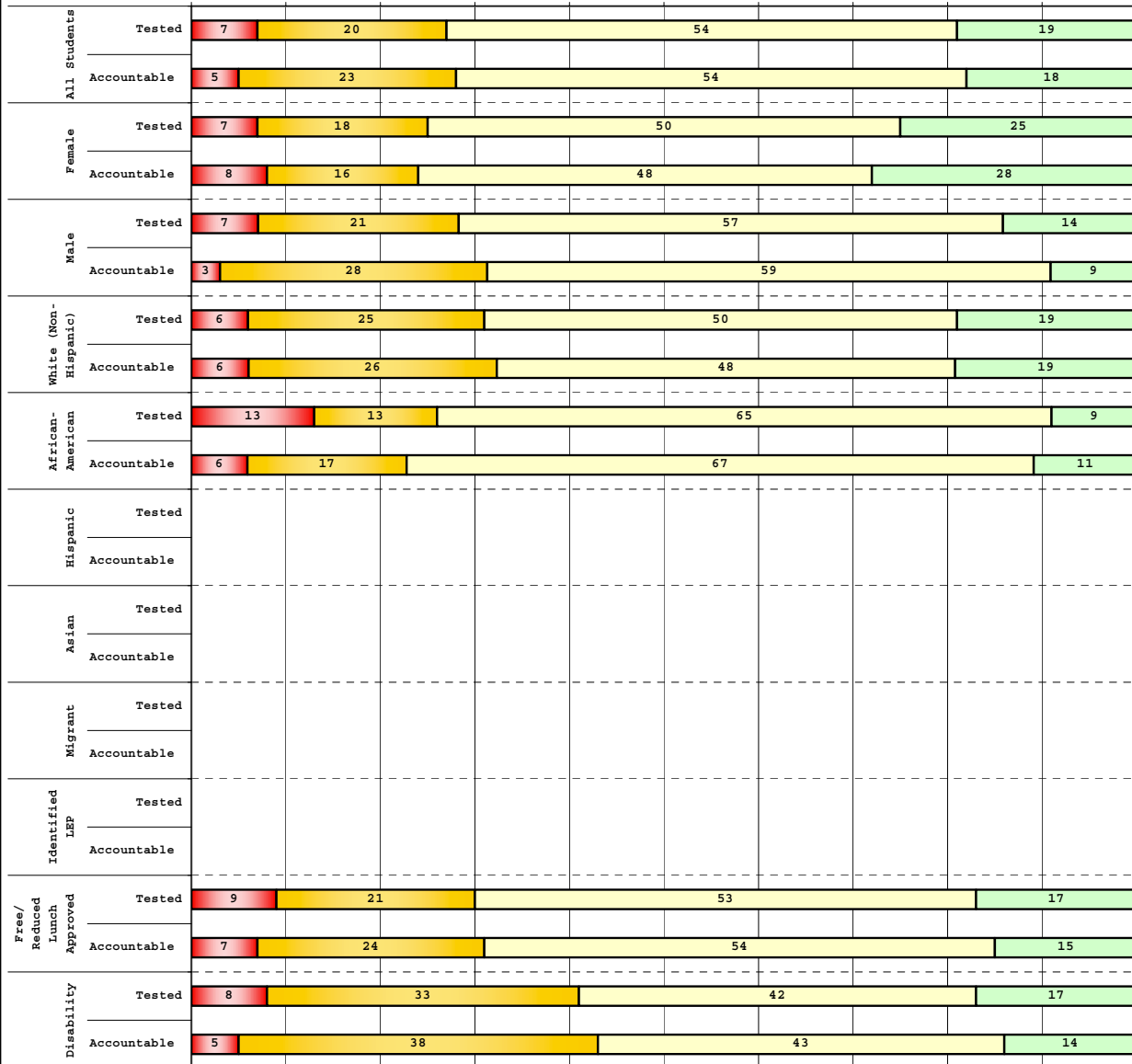
The horizontal bar represents the percent of students scoring at a performance level within a particular year. Percentages may not sum to 100% due to rounding.



**2008-2009
INTERIM PERFORMANCE REPORT
READING DISAGGREGATION
Performance Level Percents**

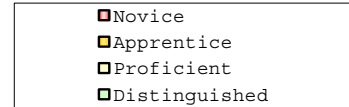
School: Yates Elementary School
District: Fayette County
Code: 165140
Grade: 03

0% 10% 20% 30% 40% 50% 60% 70% 80% 90% 100%



Tested Students

	N%	A%	P%	D%	P+D%
Total	7	20	54	19	72.86
Female	7	18	50	25	75.00
Male	7	21	57	14	71.43
White (Non-Hispanic)	6	25	50	19	69.44
African-American	13	13	65	9	73.91
Hispanic	Unreportable*				
Asian	Unreportable*				
Other	Unreportable*				
Title I	7	20	54	19	72.86
Migrant	Unreportable*				
Identified LEP	Unreportable*				
Extended Sch Services	14	64	21	0	21.43
Gifted/Talented	Unreportable*				
F/R Lunch Approved	9	21	53	17	69.81
Vocational/2 Credits					
Disability	8	33	42	17	58.33
Alternate Assessment	Unreportable*				
NCLB Accountable Students					
Total	5	23	54	18	71.93
Female	8	16	48	28	76.00
Male	3	28	59	9	68.75
White (Non-Hispanic)	6	26	48	19	67.74
African-American	6	17	67	11	77.78
Hispanic	Unreportable*				
Asian	Unreportable*				
Other	Unreportable*				
Title I	5	23	54	18	71.93
Migrant					
Identified LEP	Unreportable*				
Extended Sch Services	15	62	23	0	23.08
Gifted/Talented	Unreportable*				
F/R Lunch Approved	7	24	54	15	68.29
Vocational/2 Credits					
Disability	5	38	43	14	57.14
Alternate Assessment	Unreportable*				



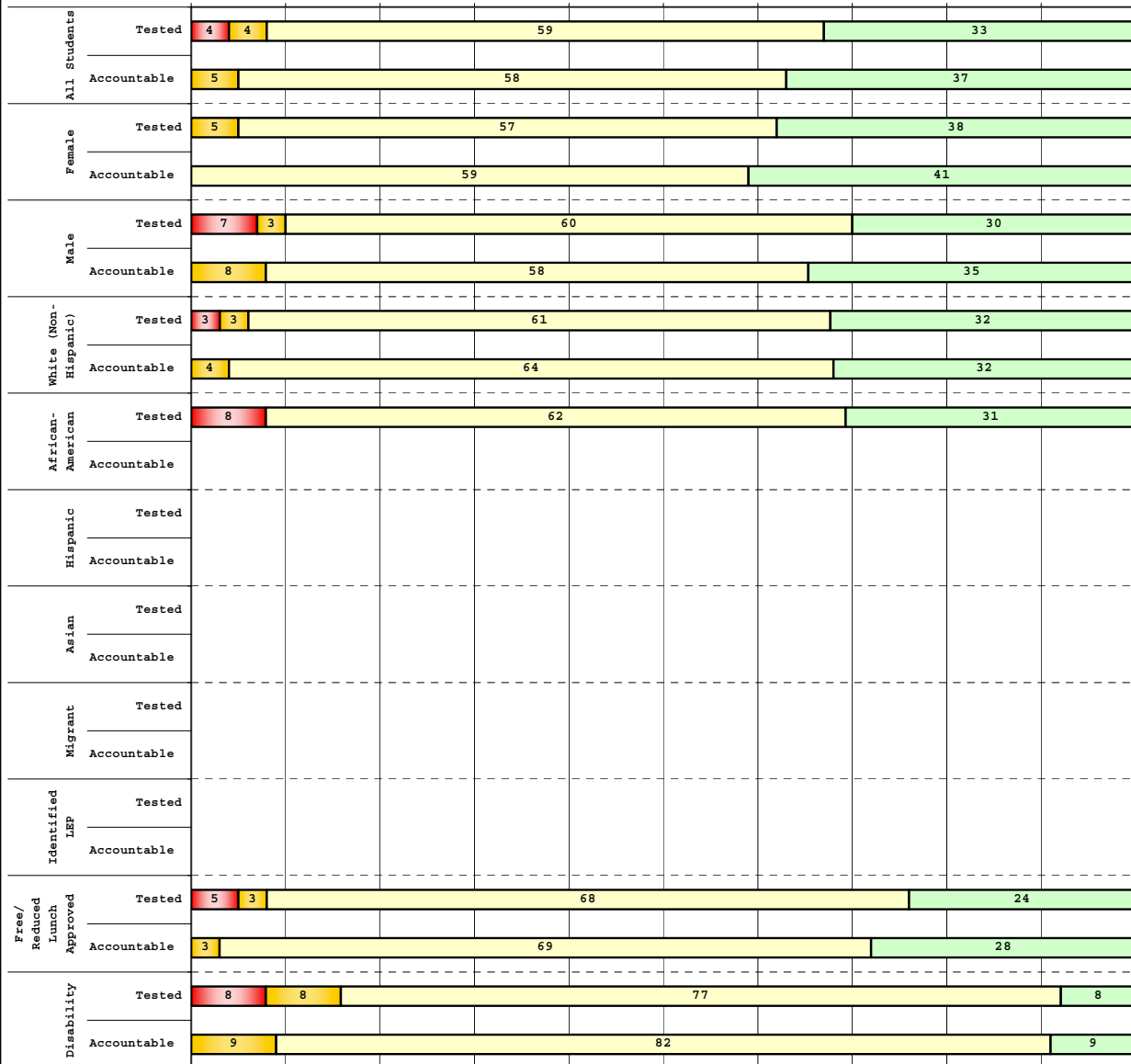
Percentage may not sum to 100% due to rounding. 'Unreportable*' indicates subpopulations with fewer than 10 students or subpopulations where all students score at the same performance level.



**2008-2009
INTERIM PERFORMANCE REPORT
READING DISAGGREGATION
Performance Level Percents**

School: Yates Elementary School
District: Fayette County
Code: 165140
Grade: 04

0% 10% 20% 30% 40% 50% 60% 70% 80% 90% 100%



Tested Students

	N%	A%	P%	D%	P+D%
Total	4	4	59	33	92.16
Female	0	5	57	38	95.24
Male	7	3	60	30	90.00
White (Non-Hispanic)	3	3	61	32	93.55
African-American	8	0	62	31	92.31
Hispanic					Unreportable*
Asian					Unreportable*
Other					Unreportable*
Title I	4	4	59	33	92.16
Migrant					
Identified LEP					Unreportable*
Extended Sch Services					
Gifted/Talented					Unreportable*
F/R Lunch Approved	5	3	68	24	91.89
Vocational/2 Credits					
Disability	8	8	77	8	84.62
Alternate Assessment					

NCLB Accountable Students

	N%	A%	P%	D%	P+D%
Total	0	5	58	37	95.35
Female	0	0	59	41	100.00
Male	0	8	58	35	92.31
White (Non-Hispanic)	0	4	64	32	96.43
African-American					Unreportable*
Hispanic					Unreportable*
Asian					Unreportable*
Other					Unreportable*
Title I	0	5	58	37	95.35
Migrant					
Identified LEP					Unreportable*
Extended Sch Services					
Gifted/Talented					Unreportable*
F/R Lunch Approved	0	3	69	28	96.55
Vocational/2 Credits					
Disability	0	9	82	9	90.91
Alternate Assessment					

■ Novice
■ Apprentice
■ Proficient
■ Distinguished

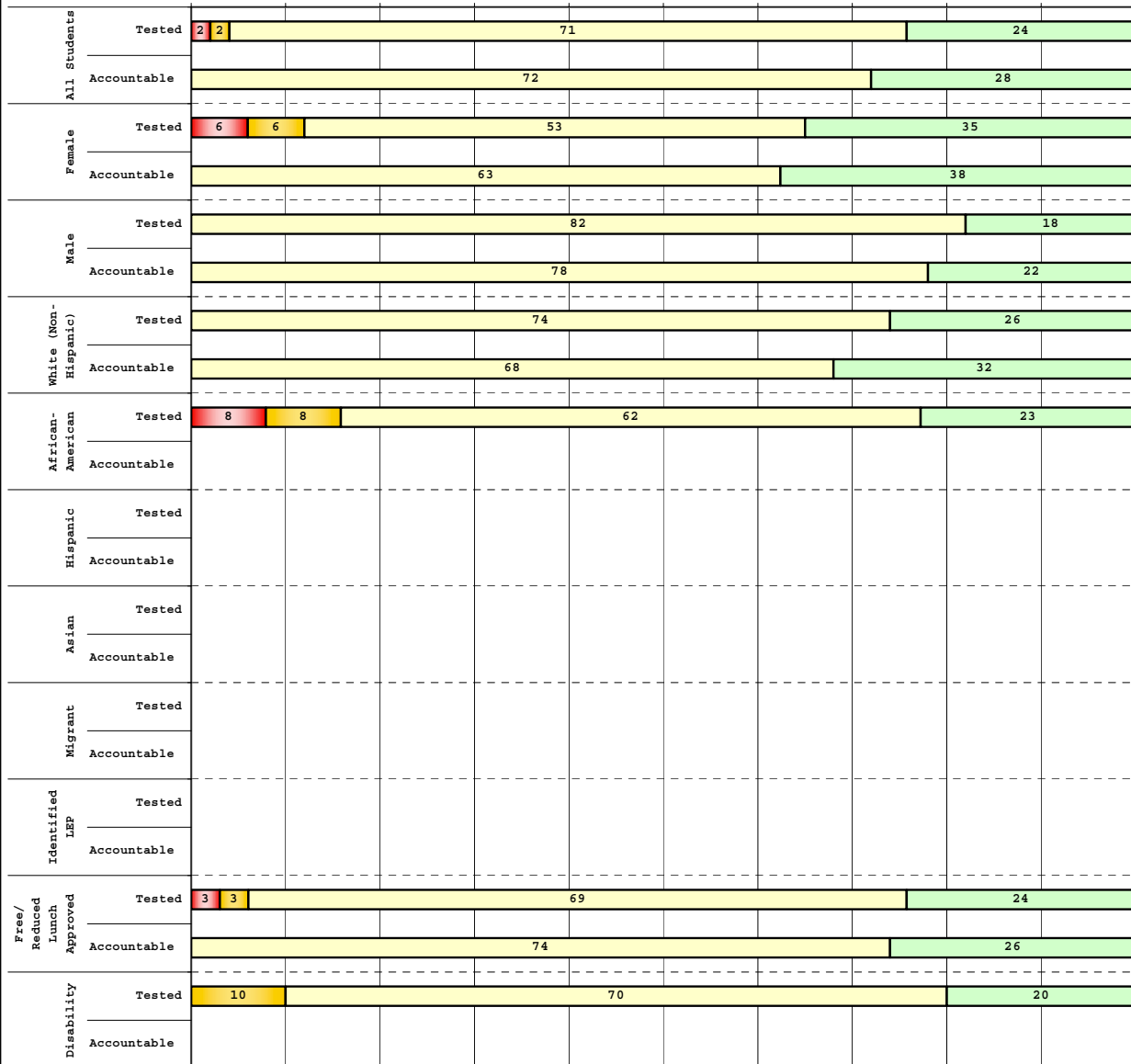
Percentage may not sum to 100% due to rounding. 'Unreportable*' indicates subpopulations with fewer than 10 students or subpopulations where all students score at the same performance level.



**2008-2009
INTERIM PERFORMANCE REPORT
READING DISAGGREGATION
Performance Level Percents**

School: Yates Elementary School
District: Fayette County
Code: 165140
Grade: 05

0% 10% 20% 30% 40% 50% 60% 70% 80% 90% 100%



Tested Students

	N%	A%	P%	D%	P+D%
Total	2	2	71	24	95.56
Female	6	6	53	35	88.24
Male	0	0	82	18	100.00
White (Non-Hispanic)	0	0	74	26	100.00
African-American	8	8	62	23	84.62
Hispanic	Unreportable*				
Asian	Unreportable*				
Other	Unreportable*				
Title I	2	2	71	24	95.56
Migrant	Unreportable*				
Identified LEP	Unreportable*				
Extended Sch Services	Unreportable*				
Gifted/Talented	Unreportable*				
F/R Lunch Approved	3	3	69	24	93.10
Vocational/2 Credits	Unreportable*				
Disability	0	10	70	20	90.00
Alternate Assessment	Unreportable*				

NCLB Accountable Students

	N%	A%	P%	D%	P+D%
Total	0	0	72	28	100.00
Female	0	0	63	38	100.00
Male	0	0	78	22	100.00
White (Non-Hispanic)	0	0	68	32	100.00
African-American	Unreportable*				
Hispanic	Unreportable*				
Asian	Unreportable*				
Other	Unreportable*				
Title I	0	0	72	28	100.00
Migrant	Unreportable*				
Identified LEP	Unreportable*				
Extended Sch Services	Unreportable*				
Gifted/Talented	Unreportable*				
F/R Lunch Approved	0	0	74	26	100.00
Vocational/2 Credits	Unreportable*				
Disability	Unreportable*				
Alternate Assessment	Unreportable*				

■ Novice
■ Apprentice
■ Proficient
■ Distinguished

Percentage may not sum to 100% due to rounding. 'Unreportable*' indicates subpopulations with fewer than 10 students or subpopulations where all students score at the same performance level.



**2008-2009
INTERIM PERFORMANCE REPORT
READING CORE CONTENT**

School: Yates Elementary School
 District: Fayette County
 Code: 165140
 Grade: 03

	No. Items	No. Observations	SCHOOL								Std. Err.	No. Observations	STATE								School -State Mean
			B	0	1	2	3	4	Mean	B			0	1	2	3	4	Mean			
OPEN RESPONSE																					
2.0.x - Developing Understanding	2	112	0	8	32	43	15	2	1.7	0.1	100,212	0	10	30	44	14	2	1.7	0.0		
3.0.x - Interpreting Text	2	112	0	8	32	43	15	2	1.7	0.1	100,212	0	10	30	44	14	2	1.7	0.0		
MULTIPLE CHOICE																					
1.0.x - Forming a Foundation	32	439	81	19	0				0.81	0.02	392,589	83	17	0				0.83	-0.02		
2.0.x - Developing Understanding	89	1,119	76	24	0				0.76	0.01	993,477	80	20	0				0.80	-0.04		
3.0.x - Interpreting Text	31	522	73	27	0				0.73	0.02	468,115	77	23	0				0.77	-0.04		
5.0.x - Critical Stance	15	228	79	21	0				0.79	0.03	208,359	79	21	0				0.79	0.00		



2008-2009
INTERIM PERFORMANCE REPORT
READING CORE CONTENT

School: Yates Elementary School
 District: Fayette County
 Code: 165140
 Grade: 04

	No. Items	No. Observations	SCHOOL								Mean	Std. Err.	No. Observations	STATE								Mean	School -State Mean
			B	0	1	2	3	4	B	0				1	2	3	4						
OPEN RESPONSE																							
2.0.x - Developing Understanding	5	73	0	0	7	37	40	16	2.7	0.1	81,849	0	3	24	52	18	3	1.9	0.8				
3.0.x - Interpreting Text	6	113	0	2	8	32	46	12	2.6	0.1	131,199	0	4	22	45	23	5	2.0	0.6				
MULTIPLE CHOICE																							
1.0.x - Forming a Foundation	34	350	80	20	0				0.80	0.02	401,452	72	28	0				0.71	0.09				
2.0.x - Developing Understanding	76	759	79	20	0				0.79	0.02	868,422	73	27	0				0.73	0.06				
3.0.x - Interpreting Text	29	247	87	13	0				0.87	0.03	278,648	79	21	0				0.79	0.08				
5.0.x - Critical Stance	9	137	78	22	0				0.78	0.04	155,704	74	26	0				0.74	0.04				



2008-2009
INTERIM PERFORMANCE REPORT
READING CORE CONTENT

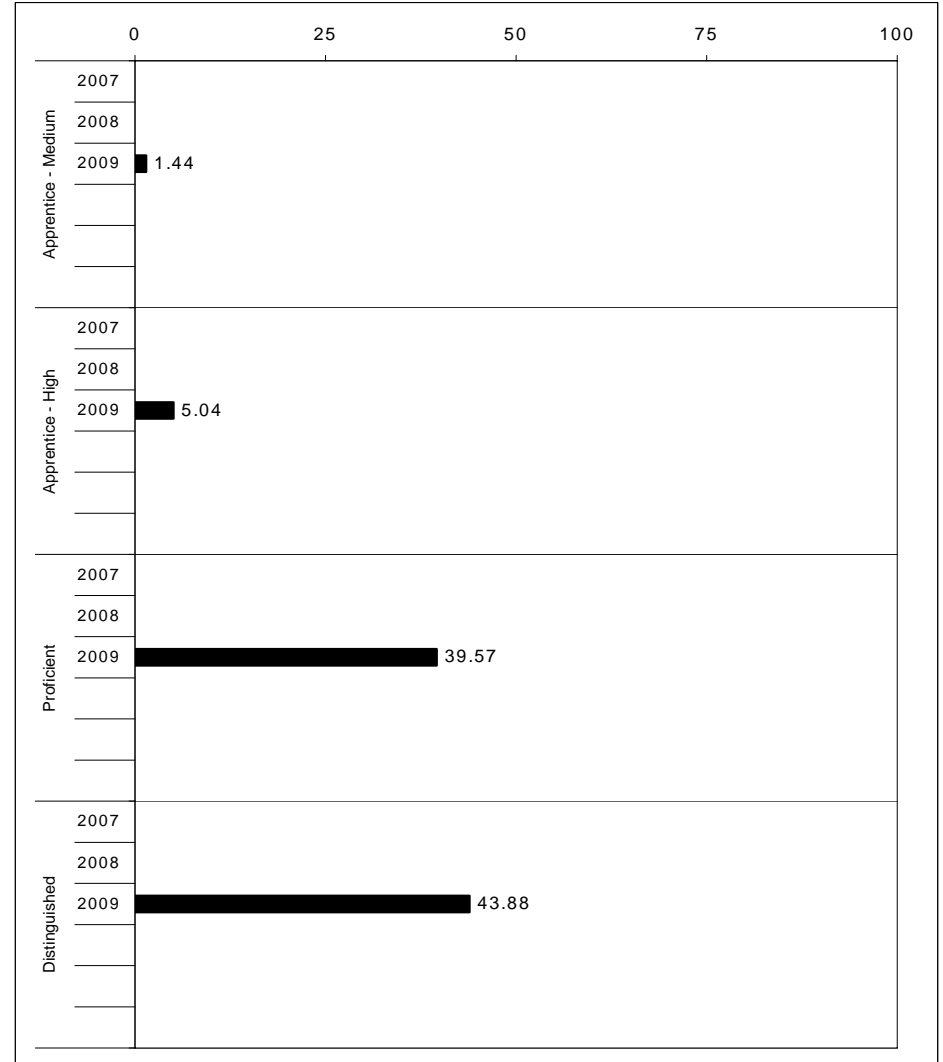
School: Yates Elementary School
 District: Fayette County
 Code: 165140
 Grade: 05

	No. Items	No. Observations	SCHOOL								Std. Err.	No. Observations	STATE								School -State Mean
			B	0	1	2	3	4	Mean	B			0	1	2	3	4	Mean			
OPEN RESPONSE																					
2.0.x - Developing Understanding	6	70	0	0	13	43	27	17	2.5	0.1	89,507	0	5	23	48	20	5	2.0	0.5		
3.0.x - Interpreting Text	6	105	0	0	9	52	27	12	2.4	0.1	130,403	0	5	21	50	19	4	2.0	0.4		
MULTIPLE CHOICE																					
1.0.x - Forming a Foundation	28	212	88	12	0				0.88	0.03	268,187	74	26	0				0.74	0.14		
2.0.x - Developing Understanding	71	668	83	17	0				0.83	0.02	823,068	80	20	0				0.80	0.03		
3.0.x - Interpreting Text	27	266	82	18	0				0.82	0.02	341,653	81	19	0				0.81	0.01		
5.0.x - Critical Stance	17	240	87	13	0				0.87	0.03	300,671	75	25	0				0.75	0.12		



2008-2009
INTERIM PERFORMANCE REPORT
MATHEMATICS TREND DATA
Performance Level Percents

School: Yates Elementary School
 District: Fayette County
 Code: 165140
 Grade: ELEMENTARY



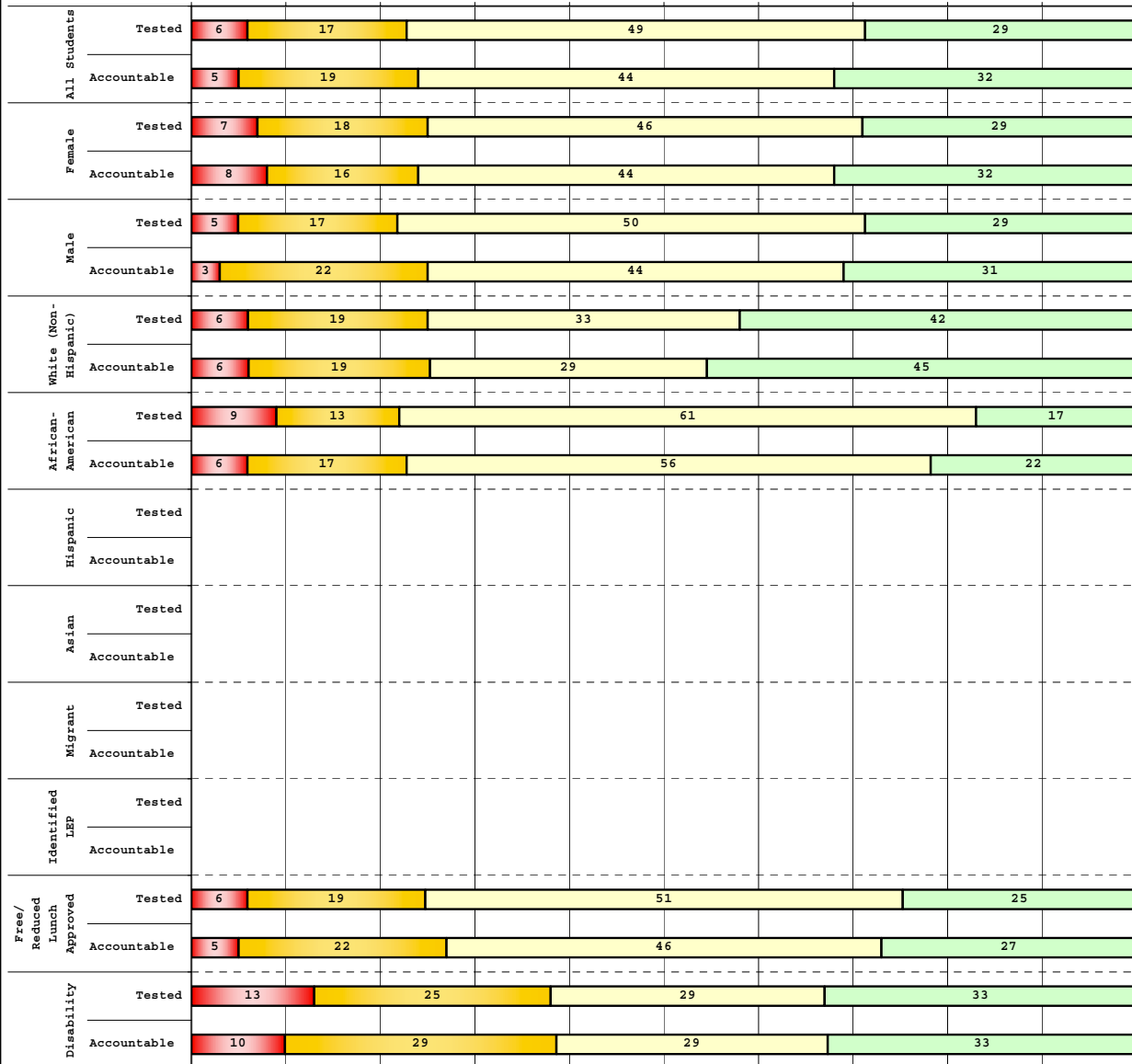
The horizontal bar represents the percent of students scoring at a performance level within a particular year. Percentages may not sum to 100% due to rounding.



2008-2009
INTERIM PERFORMANCE REPORT
MATHEMATICS DISAGGREGATION
Performance Level Percents

School: Yates Elementary School
 District: Fayette County
 Code: 165140
 Grade: 03

0% 10% 20% 30% 40% 50% 60% 70% 80% 90% 100%

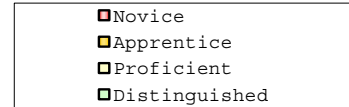


Tested Students

	N%	A%	P%	D%	P+D%
Total	6	17	49	29	77.14
Female	7	18	46	29	75.00
Male	5	17	50	29	78.57
White (Non-Hispanic)	6	19	33	42	75.00
African-American	9	13	61	17	78.26
Hispanic	Unreportable*				
Asian	Unreportable*				
Other	Unreportable*				
Title I	6	17	49	29	77.14
Migrant	Unreportable*				
Identified LEP	Unreportable*				
Extended Sch Services	14	71	14	0	14.29
Gifted/Talented	Unreportable*				
F/R Lunch Approved	6	19	51	25	75.47
Vocational/2 Credits					
Disability	13	25	29	33	62.50
Alternate Assessment	Unreportable*				

NCLB Accountable Students

	N%	A%	P%	D%	P+D%
Total	5	19	44	32	75.44
Female	8	16	44	32	76.00
Male	3	22	44	31	75.00
White (Non-Hispanic)	6	19	29	45	74.19
African-American	6	17	56	22	77.78
Hispanic	Unreportable*				
Asian	Unreportable*				
Other	Unreportable*				
Title I	5	19	44	32	75.44
Migrant					
Identified LEP	Unreportable*				
Extended Sch Services	15	69	15	0	15.38
Gifted/Talented	Unreportable*				
F/R Lunch Approved	5	22	46	27	73.17
Vocational/2 Credits					
Disability	10	29	29	33	61.90
Alternate Assessment	Unreportable*				



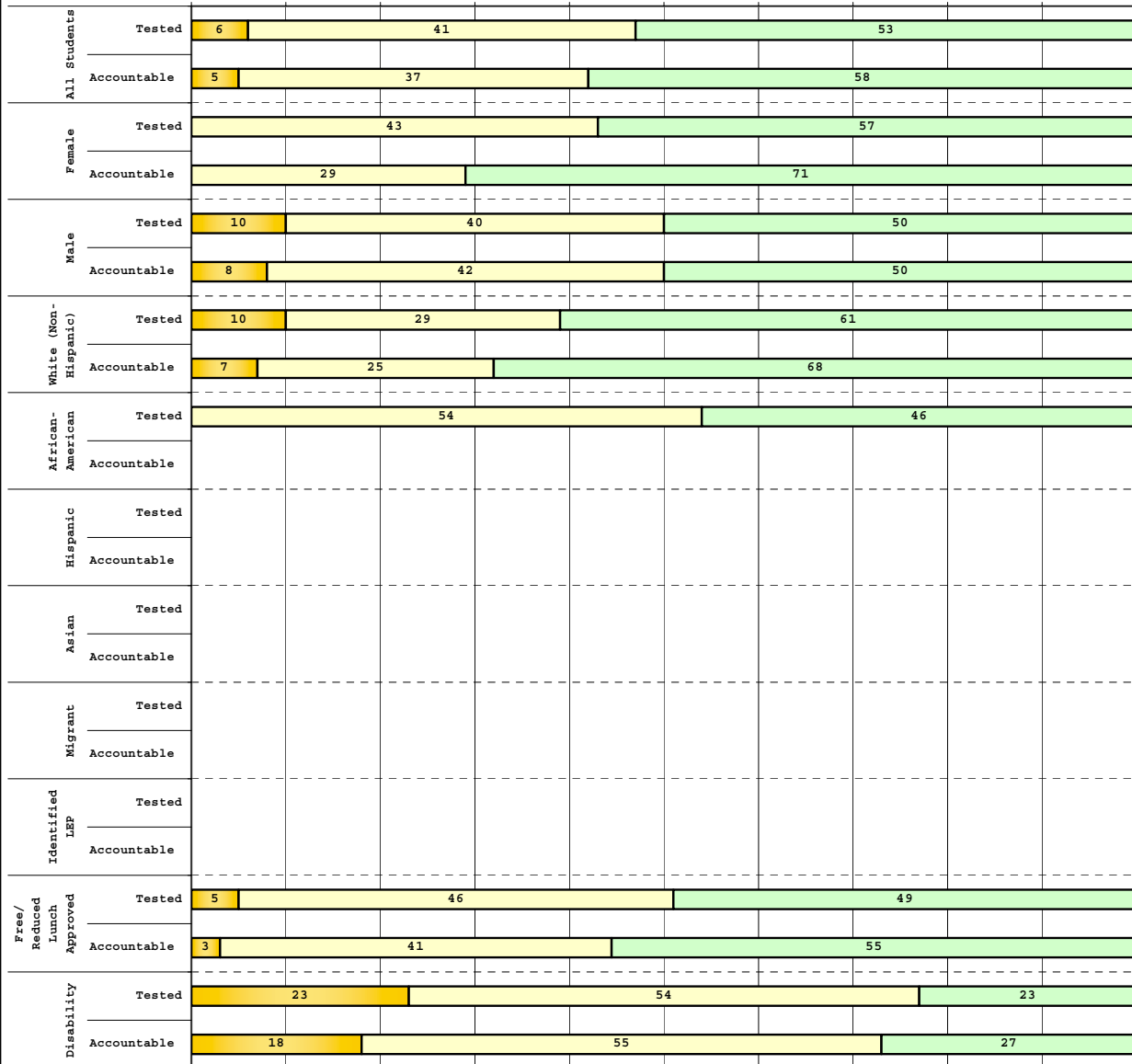
Percentage may not sum to 100% due to rounding. 'Unreportable*' indicates subpopulations with fewer than 10 students or subpopulations where all students score at the same performance level.



**2008-2009
INTERIM PERFORMANCE REPORT
MATHEMATICS DISAGGREGATION
Performance Level Percents**

School: Yates Elementary School
District: Fayette County
Code: 165140
Grade: 04

0% 10% 20% 30% 40% 50% 60% 70% 80% 90% 100%



Tested Students

	N%	A%	P%	D%	P+D%
Total	0	6	41	53	94.12
Female	0	0	43	57	100.00
Male	0	10	40	50	90.00
White (Non-Hispanic)	0	10	29	61	90.32
African-American	0	0	54	46	100.00
Hispanic					Unreportable*
Asian					Unreportable*
Other					Unreportable*
Title I	0	6	41	53	94.12
Migrant					
Identified LEP					Unreportable*
Extended Sch Services					
Gifted/Talented					Unreportable*
F/R Lunch Approved	0	5	46	49	94.59
Vocational/2 Credits					
Disability	0	23	54	23	76.92
Alternate Assessment					

NCLB Accountable Students

	N%	A%	P%	D%	P+D%
Total	0	5	37	58	95.35
Female	0	0	29	71	100.00
Male	0	8	42	50	92.31
White (Non-Hispanic)	0	7	25	68	92.86
African-American					Unreportable*
Hispanic					Unreportable*
Asian					Unreportable*
Other					Unreportable*
Title I	0	5	37	58	95.35
Migrant					
Identified LEP					Unreportable*
Extended Sch Services					
Gifted/Talented					Unreportable*
F/R Lunch Approved	0	3	41	55	96.55
Vocational/2 Credits					
Disability	0	18	55	27	81.82
Alternate Assessment					

■ Novice
■ Apprentice
■ Proficient
■ Distinguished

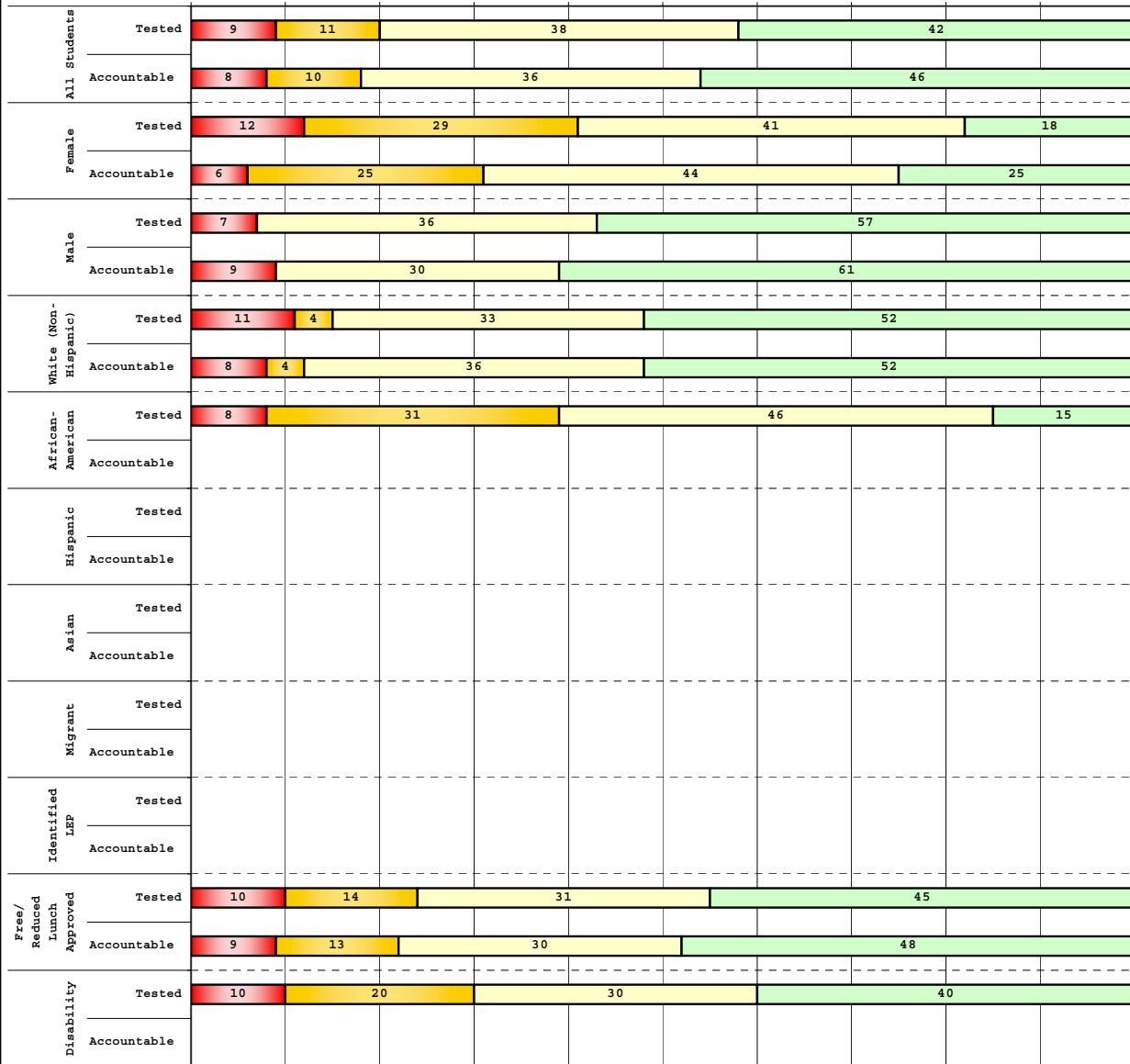
Percentage may not sum to 100% due to rounding. 'Unreportable*' indicates subpopulations with fewer than 10 students or subpopulations where all students score at the same performance level.



**2008-2009
INTERIM PERFORMANCE REPORT
MATHEMATICS DISAGGREGATION
Performance Level Percents**

School: Yates Elementary School
District: Fayette County
Code: 165140
Grade: 05

0% 10% 20% 30% 40% 50% 60% 70% 80% 90% 100%

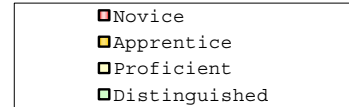


Tested Students

	N%	A%	P%	D%	P+D%
Total	9	11	38	42	80.00
Female	12	29	41	18	58.82
Male	7	0	36	57	92.86
White (Non-Hispanic)	11	4	33	52	85.19
African-American	8	31	46	15	61.54
Hispanic	Unreportable*				
Asian	Unreportable*				
Other	Unreportable*				
Title I	9	11	38	42	80.00
Migrant	Unreportable*				
Identified LEP	Unreportable*				
Extended Sch Services	Unreportable*				
Gifted/Talented	Unreportable*				
F/R Lunch Approved	10	14	31	45	75.86
Vocational/2 Credits	Unreportable*				
Disability	10	20	30	40	70.00
Alternate Assessment	Unreportable*				

NCLB Accountable Students

	N%	A%	P%	D%	P+D%
Total	8	10	36	46	82.05
Female	6	25	44	25	68.75
Male	9	0	30	61	91.30
White (Non-Hispanic)	8	4	36	52	88.00
African-American	Unreportable*				
Hispanic	Unreportable*				
Asian	Unreportable*				
Other	Unreportable*				
Title I	8	10	36	46	82.05
Migrant	Unreportable*				
Identified LEP	Unreportable*				
Extended Sch Services	Unreportable*				
Gifted/Talented	Unreportable*				
F/R Lunch Approved	9	13	30	48	78.26
Vocational/2 Credits	Unreportable*				
Disability	Unreportable*				
Alternate Assessment	Unreportable*				



Percentage may not sum to 100% due to rounding. 'Unreportable*' indicates subpopulations with fewer than 10 students or subpopulations where all students score at the same performance level.



2008-2009
INTERIM PERFORMANCE REPORT
MATHEMATICS CORE CONTENT

School: Yates Elementary School
 District: Fayette County
 Code: 165140
 Grade: 03

	No. Items	No. Observations	SCHOOL							Mean	Std. Err.	No. Observations	STATE							Mean	School -State Mean
			B	0	1	2	3	4	B				0	1	2	3	4				
OPEN RESPONSE																					
1.x.x - Number Prop Oper	5	141	0	19	41	24	8	8	1.4	0.1	125,243	0	21	35	26	10	8	1.5	-0.1		
2.x.x - Measurement	1	8							***		8,325	0	25	5	30	14	25	2.1			
3.x.x - Geometry	2	18	0	0	28	39	17	17	2.2	0.3	16,777	0	8	24	35	13	20	2.1	0.1		
4.x.x - Data Analysis & Probabilit	1	56	0	14	11	11	20	45	2.7	0.2	50,106	0	9	13	19	27	32	2.6	0.1		
5.x.x - Algebraic Thinking	2	65	0	12	9	14	18	46	2.8	0.2	58,404	0	9	14	19	28	31	2.6	0.2		
MULTIPLE CHOICE																					
1.x.x - Number Prop Oper	32	902	75	25	0				0.75	0.01	810,106	74	26	0				0.74	0.01		
2.x.x - Measurement	7	206	82	18	0				0.82	0.03	183,647	81	18	0				0.81	0.01		
3.x.x - Geometry	18	448	84	16	0				0.84	0.02	400,848	85	15	0				0.85	-0.01		
4.x.x - Data Analysis & Probabilit	8	215	61	39	0				0.61	0.03	192,126	69	31	0				0.69	-0.08		
5.x.x - Algebraic Thinking	11	245	81	19	0				0.81	0.03	217,089	78	22	0				0.78	0.03		



2008-2009
INTERIM PERFORMANCE REPORT
MATHEMATICS CORE CONTENT

School: Yates Elementary School
 District: Fayette County
 Code: 165140
 Grade: 04

	No. Items	No. Observations	SCHOOL								Std. Err.	No. Observations	STATE								School -State Mean
			B	0	1	2	3	4	Mean	B			0	1	2	3	4	Mean			
OPEN RESPONSE																					
1.x.x - Number Prop Oper	4	65	0	6	18	32	18	25	2.4	0.2	73,656	0	17	24	29	19	12	1.9	0.5		
2.x.x - Measurement	1	7							***		8,195	0	43	13	10	20	13	1.5			
3.x.x - Geometry	2	50	0	6	4	6	28	56	3.2	0.2	57,352	0	11	20	17	19	33	2.4	0.8		
4.x.x - Data Analysis & Probabilit	1	8							***		8,152	0	5	36	29	23	6	1.9			
5.x.x - Algebraic Thinking	2	49	0	2	16	49	29	4	2.2	0.2	57,508	0	5	27	32	25	11	2.1	0.1		
MULTIPLE CHOICE																					
1.x.x - Number Prop Oper	31	577	Correct	Incorrect	Omit/Mult				0.77	0.02	664,194	Correct	Incorrect	Omit/Mult				0.67	0.10		
2.x.x - Measurement	7	123	80	20	0				0.80	0.04	139,170	62	38	0				0.62	0.18		
3.x.x - Geometry	14	244	93	7	0				0.93	0.03	278,460	77	23	0				0.77	0.16		
4.x.x - Data Analysis & Probabilit	12	264	78	22	0				0.78	0.03	303,394	71	29	0				0.71	0.07		
5.x.x - Algebraic Thinking	11	224	79	21	0				0.79	0.03	253,829	69	31	0				0.69	0.10		



2008-2009
INTERIM PERFORMANCE REPORT
MATHEMATICS CORE CONTENT

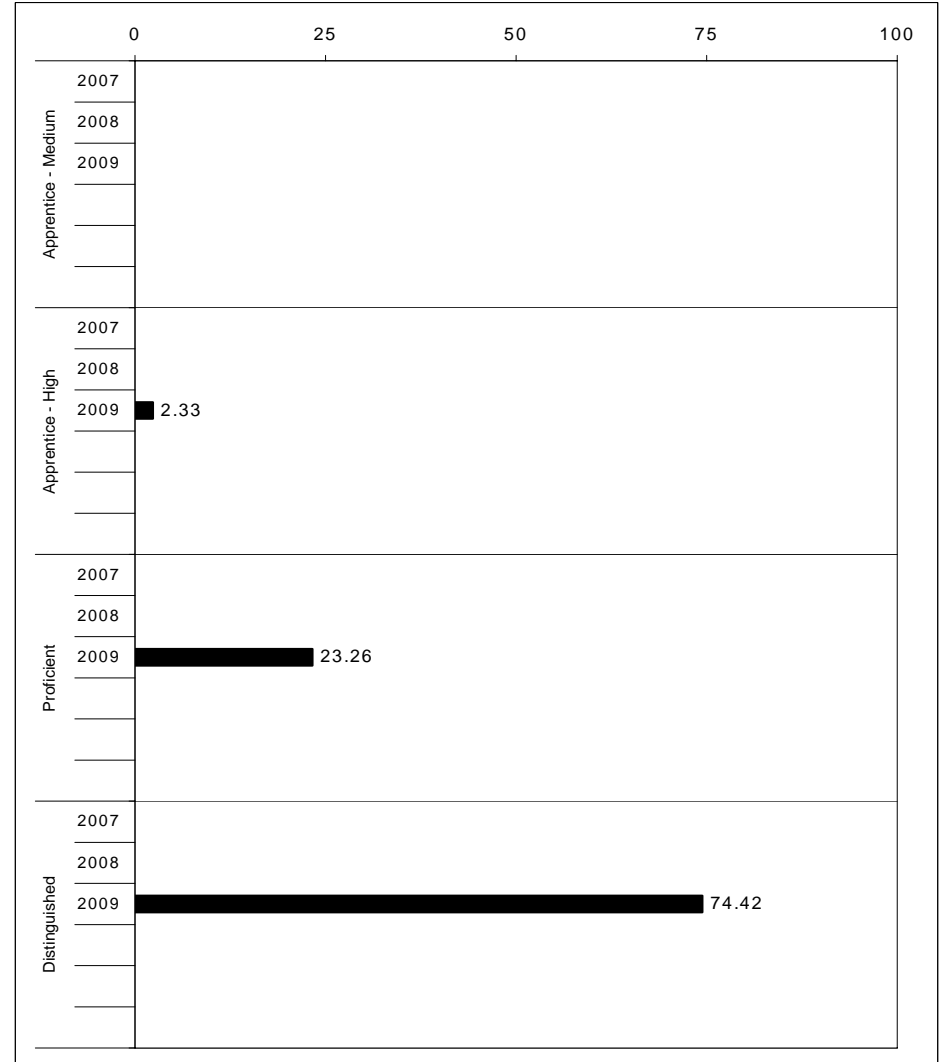
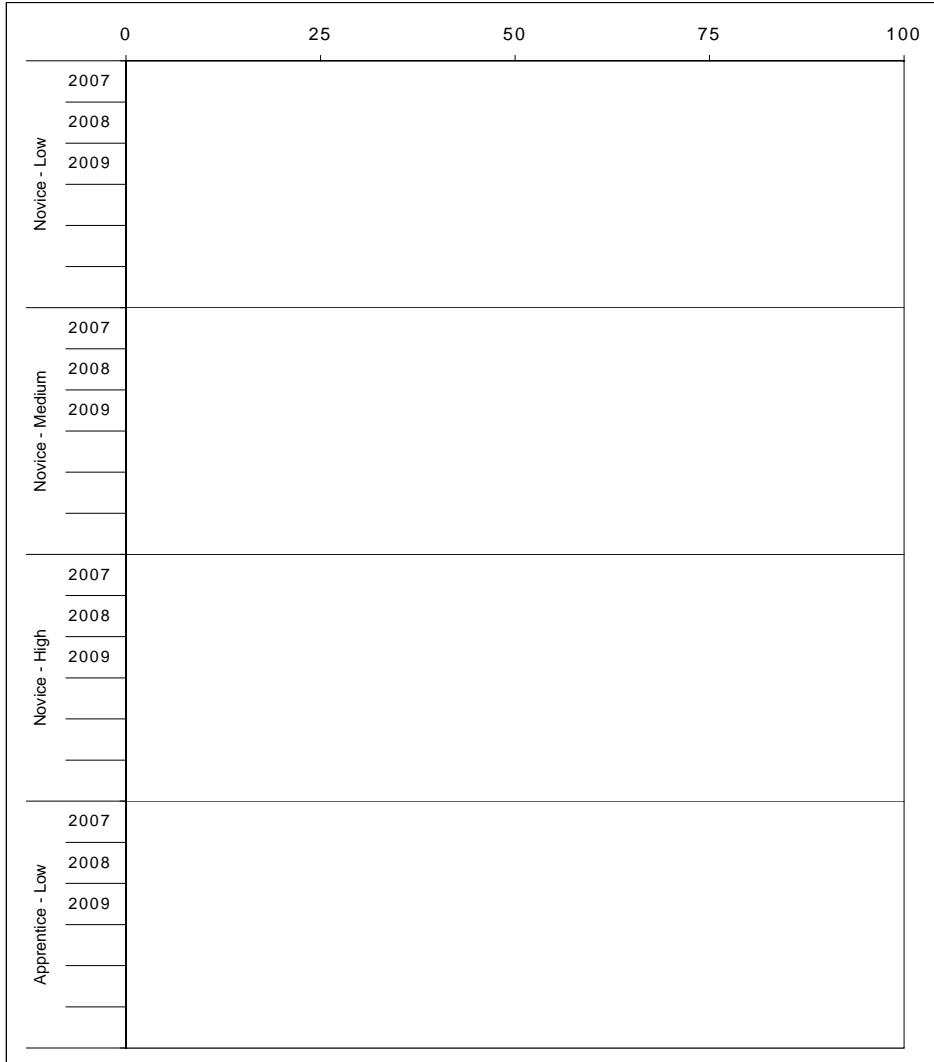
School: Yates Elementary School
 District: Fayette County
 Code: 165140
 Grade: 05

	No. Items	No. Observations	SCHOOL							Mean	Std. Err.	No. Observations	STATE							Mean	School -State Mean
			B	0	1	2	3	4	B				0	1	2	3	4				
OPEN RESPONSE																					
1.x.x - Number Prop Oper	4	59	0	5	8	19	25	42	2.9	0.2	73,199	0	8	20	18	25	29	2.5	0.4		
2.x.x - Measurement	1	7							***		8,380	0	37	30	13	10	11	1.3			
3.x.x - Geometry	2	45	0	0	11	27	18	44	3.0	0.2	56,900	0	6	24	30	26	14	2.2	0.8		
4.x.x - Data Analysis & Probabilit	1	39	0	5	13	31	18	33	2.6	0.2	48,828	0	15	18	15	17	35	2.4	0.2		
5.x.x - Algebraic Thinking	1	6							***		8,005	0	13	15	20	17	35	2.5			
MULTIPLE CHOICE																					
1.x.x - Number Prop Oper	29	514	Correct	Incorrect	Omit/Mult				0.70	0.02	643,144	Correct	Incorrect	Omit/Mult				0.63	0.07		
2.x.x - Measurement	9	123	70	30	0				0.73	0.04	154,489	63	37	0				0.62	0.11		
3.x.x - Geometry	14	221	73	27	0				0.83	0.03	276,516	62	38	0				0.78	0.05		
4.x.x - Data Analysis & Probabilit	11	201	83	17	0				0.64	0.03	252,212	78	22	0				0.64	0.00		
5.x.x - Algebraic Thinking	10	195	64	36	0				0.71	0.03	244,140	64	36	0				0.65	0.06		



2008-2009
INTERIM PERFORMANCE REPORT
SCIENCE TREND DATA
Performance Level Percents

School: Yates Elementary School
 District: Fayette County
 Code: 165140
 Grade: 04

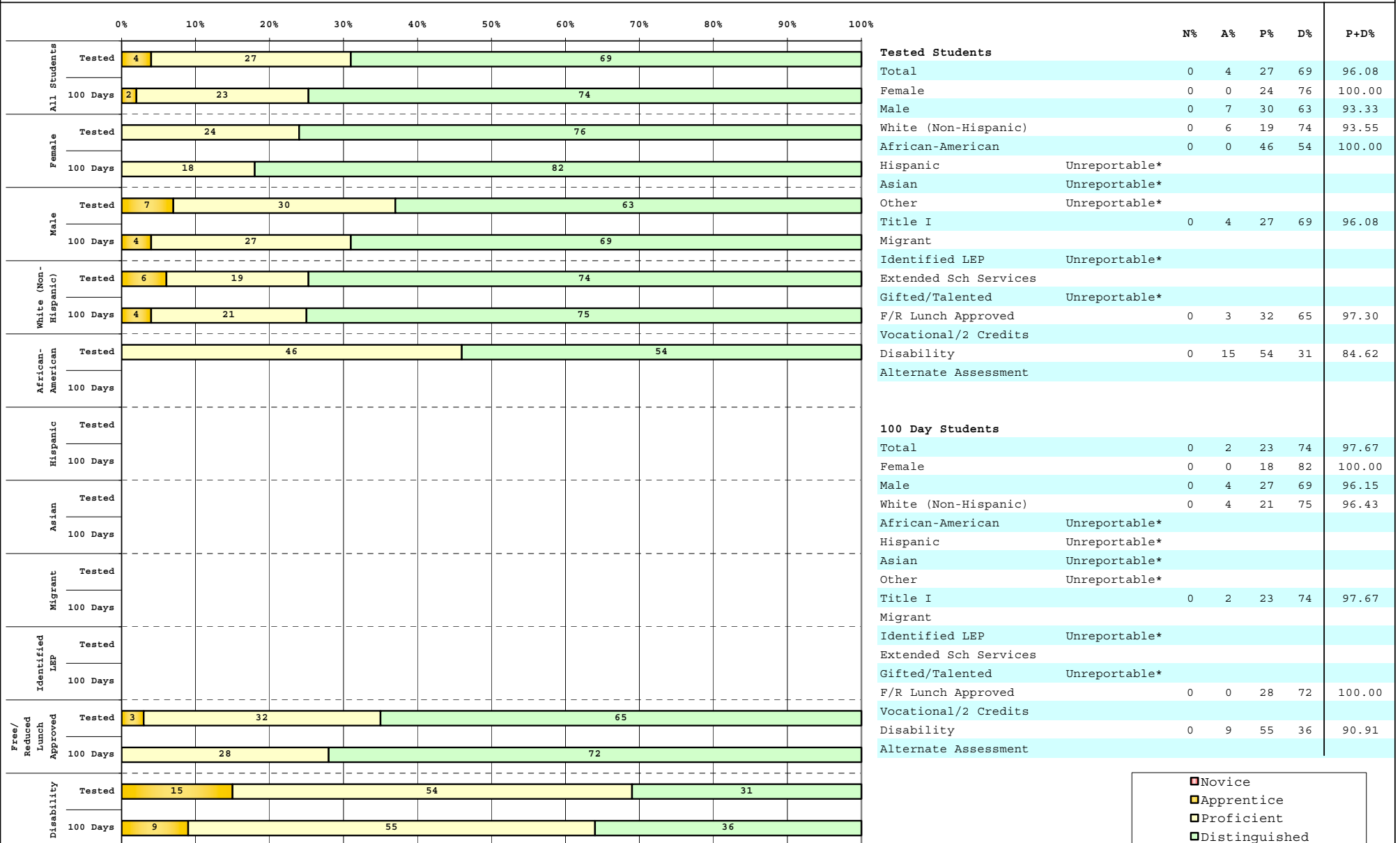


The horizontal bar represents the percent of students scoring at a performance level within a particular year. Percentages may not sum to 100% due to rounding.



**2008-2009
INTERIM PERFORMANCE REPORT
SCIENCE DISAGGREGATION
Performance Level Percents**

School: Yates Elementary School
District: Fayette County
Code: 165140
Grade: 04



	Novice
	Apprentice
	Proficient
	Distinguished

Percentage may not sum to 100% due to rounding. 'Unreportable*' indicates subpopulations with fewer than 10 students or subpopulations where all students score at the same performance level.



2008-2009
INTERIM PERFORMANCE REPORT
SCIENCE CORE CONTENT

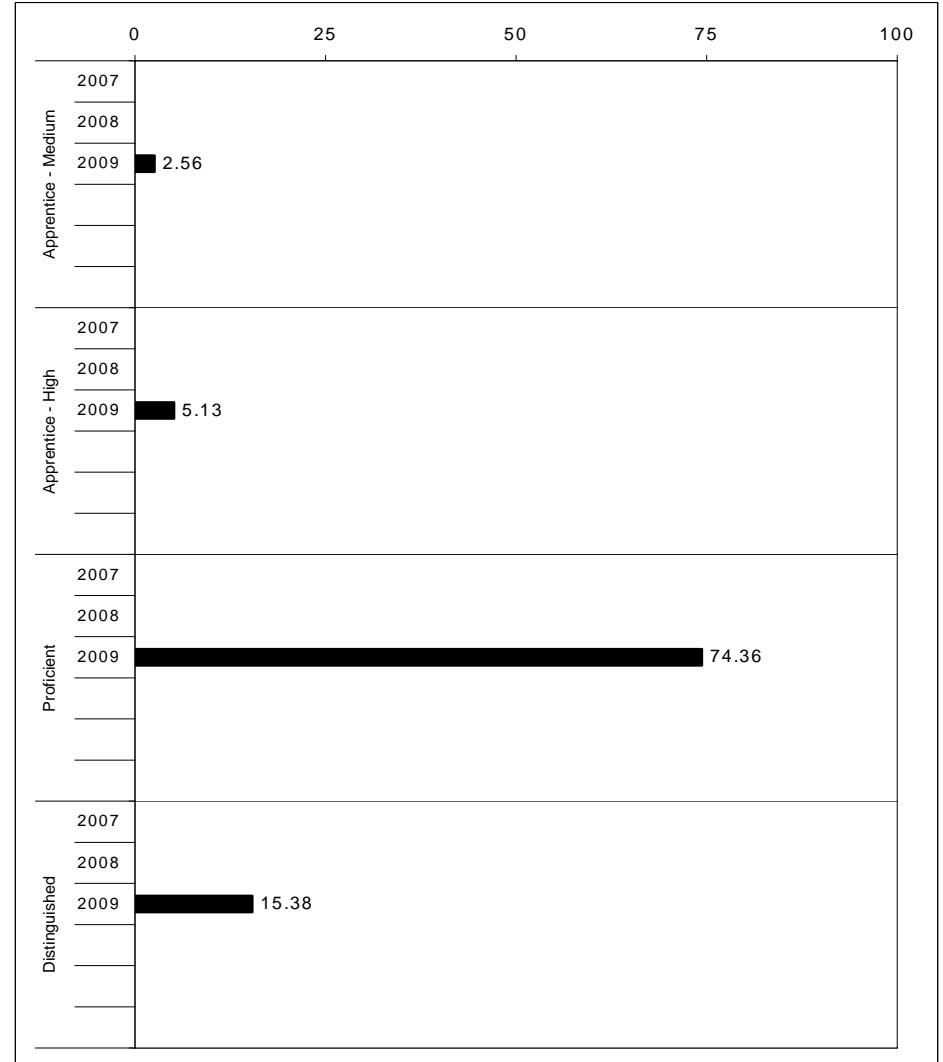
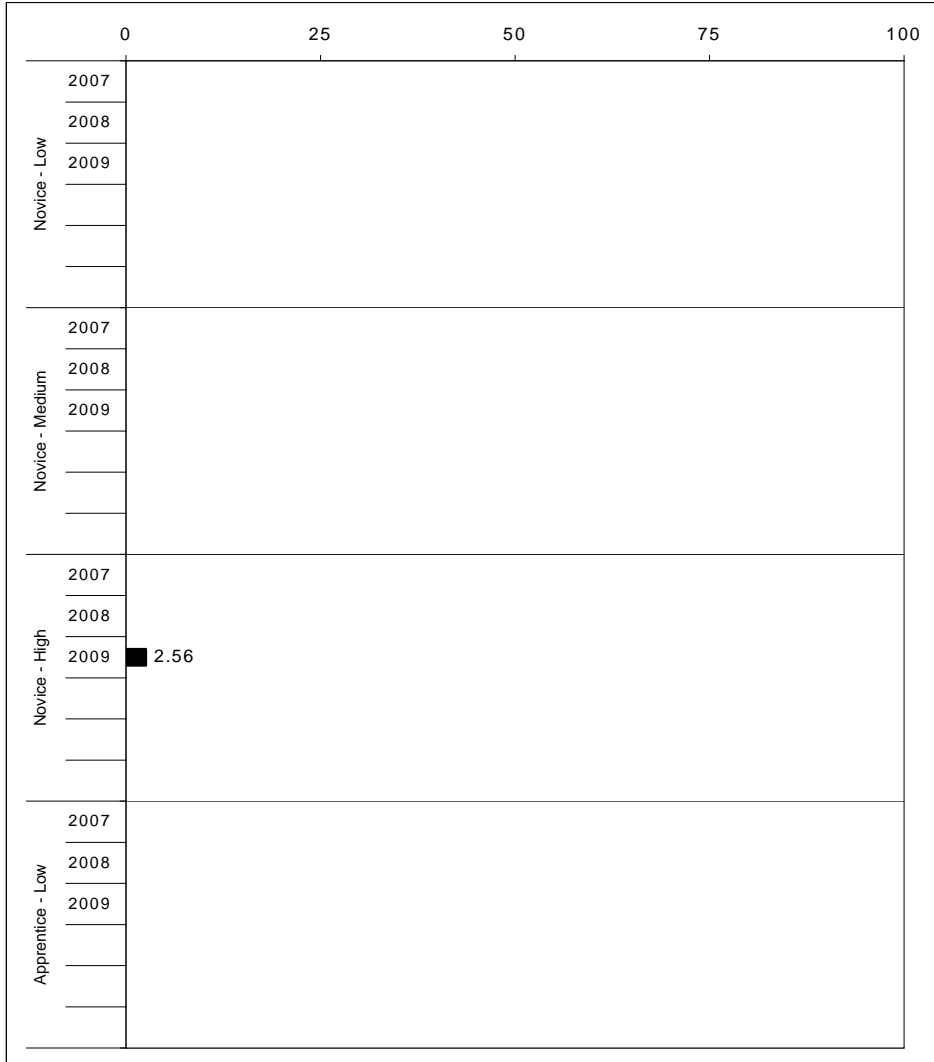
School: Yates Elementary School
 District: Fayette County
 Code: 165140
 Grade: 04

	No. Items	No. Observations	SCHOOL							Mean	Std. Err.	No. Observations	STATE						Mean	School -State Mean
			B	0	1	2	3	4	B				0	1	2	3	4			
OPEN RESPONSE																				
1.x.x - Physical Science	2	15	0	7	13	27	13	40	2.7	0.3	16,337	0	17	19	42	17	5	1.7	1.0	
2.x.x - Earth Space Science	3	57	0	4	7	33	30	26	2.7	0.1	65,658	0	12	22	35	26	4	1.9	0.8	
3.x.x - Biological Science	3	57	0	0	2	23	53	23	3.0	0.1	65,506	0	2	11	33	44	9	2.5	0.5	
4.x.x - Unifying Concepts	2	49	0	0	6	18	43	33	3.0	0.1	57,508	0	3	13	33	35	15	2.5	0.5	
MULTIPLE CHOICE																				
			Correct	Incorrect	Omit/Mult							Correct	Incorrect	Omit/Mult						
1.x.x - Physical Science	18	344	94	6	0				0.94	0.02	393,336	82	18	0				0.81	0.13	
2.x.x - Earth Space Science	19	352	86	14	0				0.86	0.02	401,488	71	29	0				0.71	0.15	
3.x.x - Biological Science	22	408	91	9	0				0.91	0.02	467,138	78	22	0				0.78	0.13	
4.x.x - Unifying Concepts	14	280	95	5	0				0.95	0.02	319,534	84	15	0				0.84	0.11	



2008-2009
INTERIM PERFORMANCE REPORT
SOCIAL STUDIES TREND DATA
Performance Level Percents

School: Yates Elementary School
 District: Fayette County
 Code: 165140
 Grade: 05



The horizontal bar represents the percent of students scoring at a performance level within a particular year. Percentages may not sum to 100% due to rounding.



2008-2009
INTERIM PERFORMANCE REPORT
SOCIAL STUDIES DISAGGREGATION
Performance Level Percents

School: Yates Elementary School
 District: Fayette County
 Code: 165140
 Grade: 05

		0%	10%	20%	30%	40%	50%	60%	70%	80%	90%	100%	N%	A%	P%	D%	P+D%		
All Students	Tested	2	16	67								16						Tested Students	
	100 Days	3	8	74								15						Total	
Female	Tested	6	18	71								6						Female	
	100 Days	6	6	81								6						Male	
Male	Tested	14		64								21							White (Non-Hispanic)
	100 Days	9		70								22							African-American
White (Non-Hispanic)	Tested	4	15	67								15						Hispanic	
	100 Days	4	8	76								12						Asian	
African-American	Tested	23			69								8						Other
	100 Days																		
Hispanic	Tested																	Migrant	
	100 Days																	Identified LEP	
Asian	Tested																	Extended Sch Services	
	100 Days																	Gifted/Talented	
Migrant	Tested																	F/R Lunch Approved	
	100 Days																	Vocational/2 Credits	
Identified LEP	Tested																	Disability	
	100 Days																	Alternate Assessment	
Free/Reduced Lunch Approved	Tested	3	17	66								14						100 Day Students	
	100 Days	4	9	74								13						Total	
Disability	Tested	10		80													Female		
	100 Days																		Male

■ Novice
■ Apprentice
■ Proficient
■ Distinguished

Percentage may not sum to 100% due to rounding. 'Unreportable*' indicates subpopulations with fewer than 10 students or subpopulations where all students score at the same performance level.



2008-2009
INTERIM PERFORMANCE REPORT
SOCIAL STUDIES CORE CONTENT

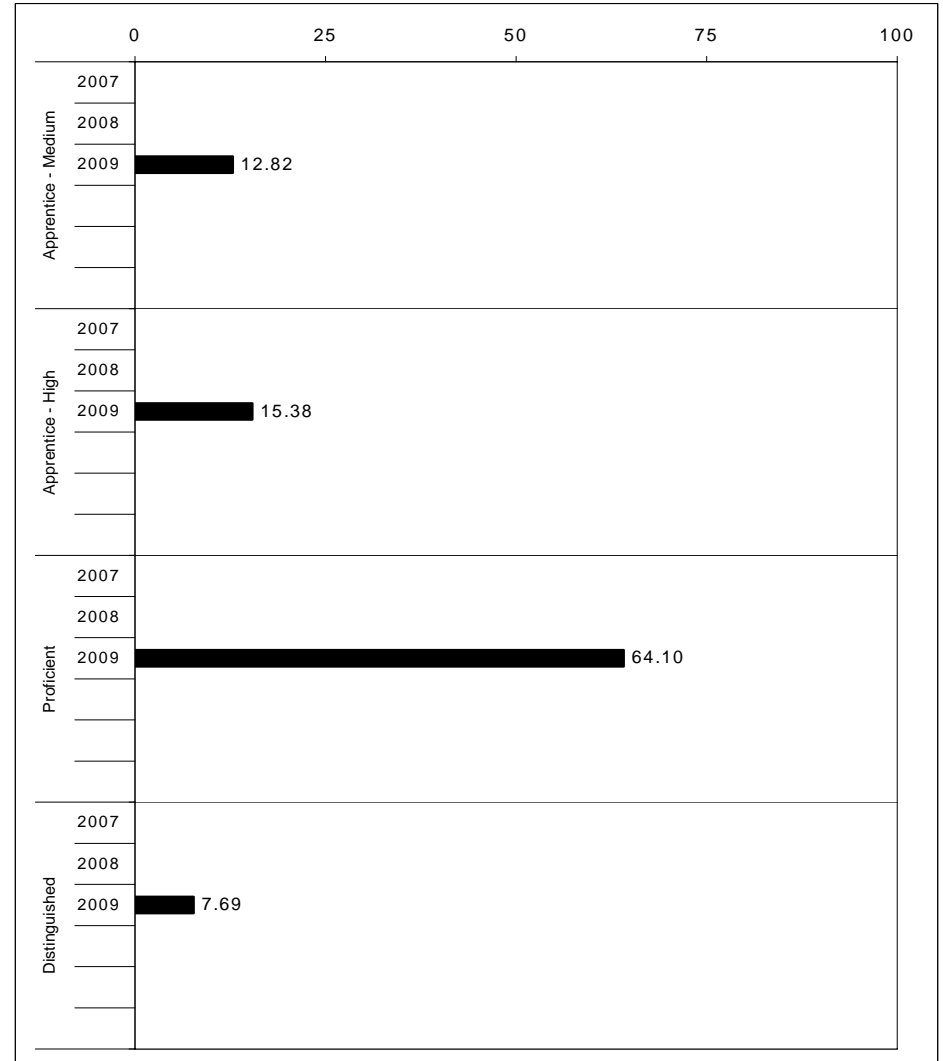
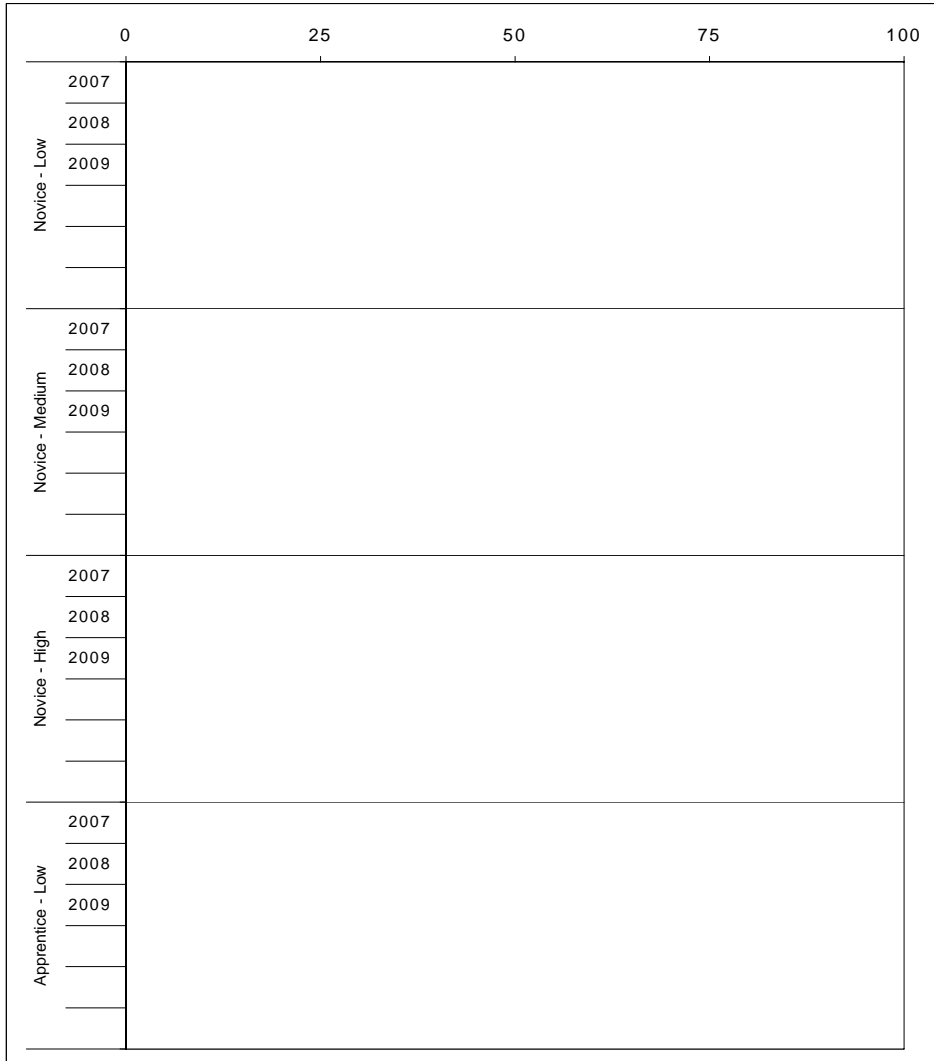
School: Yates Elementary School
 District: Fayette County
 Code: 165140
 Grade: 05

	No. Items	No. Observations	SCHOOL							Mean	Std. Err.	No. Observations	STATE							Mean	School -State Mean
			B	0	1	2	3	4	0				1	2	3	4					
OPEN RESPONSE																					
1.x.x - Government & Civics	2	44	0	2	18	59	20	0	2.0	0.1	56,903	0	5	37	45	10	2	1.7	0.3		
2.x.x - Cultures & Societies	1	7							***		8,151	0	4	21	56	15	4	1.9			
3.x.x - Economics	1	39	0	8	23	54	13	3	1.8	0.1	48,828	0	11	33	41	12	3	1.6	0.2		
4.x.x - Geography	2	12	0	8	25	33	33	0	1.9	0.3	16,077	0	9	32	39	17	3	1.7	0.2		
5.x.x - Historical Perspective	3	54	0	0	22	59	19	0	2.0	0.1	65,353	0	7	35	46	10	2	1.7	0.3		
MULTIPLE CHOICE																					
1.x.x - Government & Civics	14	254	75	25	0				0.75	0.03	317,571	66	34	0				0.66	0.09		
2.x.x - Cultures & Societies	11	169	79	21	0				0.79	0.04	211,383	70	30	0				0.69	0.10		
3.x.x - Economics	11	200	79	21	0				0.79	0.03	252,215	73	27	0				0.73	0.06		
4.x.x - Geography	16	299	69	31	0				0.69	0.03	374,337	66	34	0				0.66	0.03		
5.x.x - Historical Perspective	27	470	79	21	0				0.79	0.02	586,076	69	31	0				0.69	0.10		



2008-2009
INTERIM PERFORMANCE REPORT
WRITING ON-DEMAND TREND DATA
Performance Level Percents

School: Yates Elementary School
 District: Fayette County
 Code: 165140
 Grade: 05

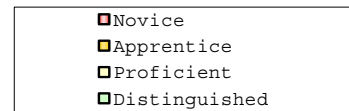
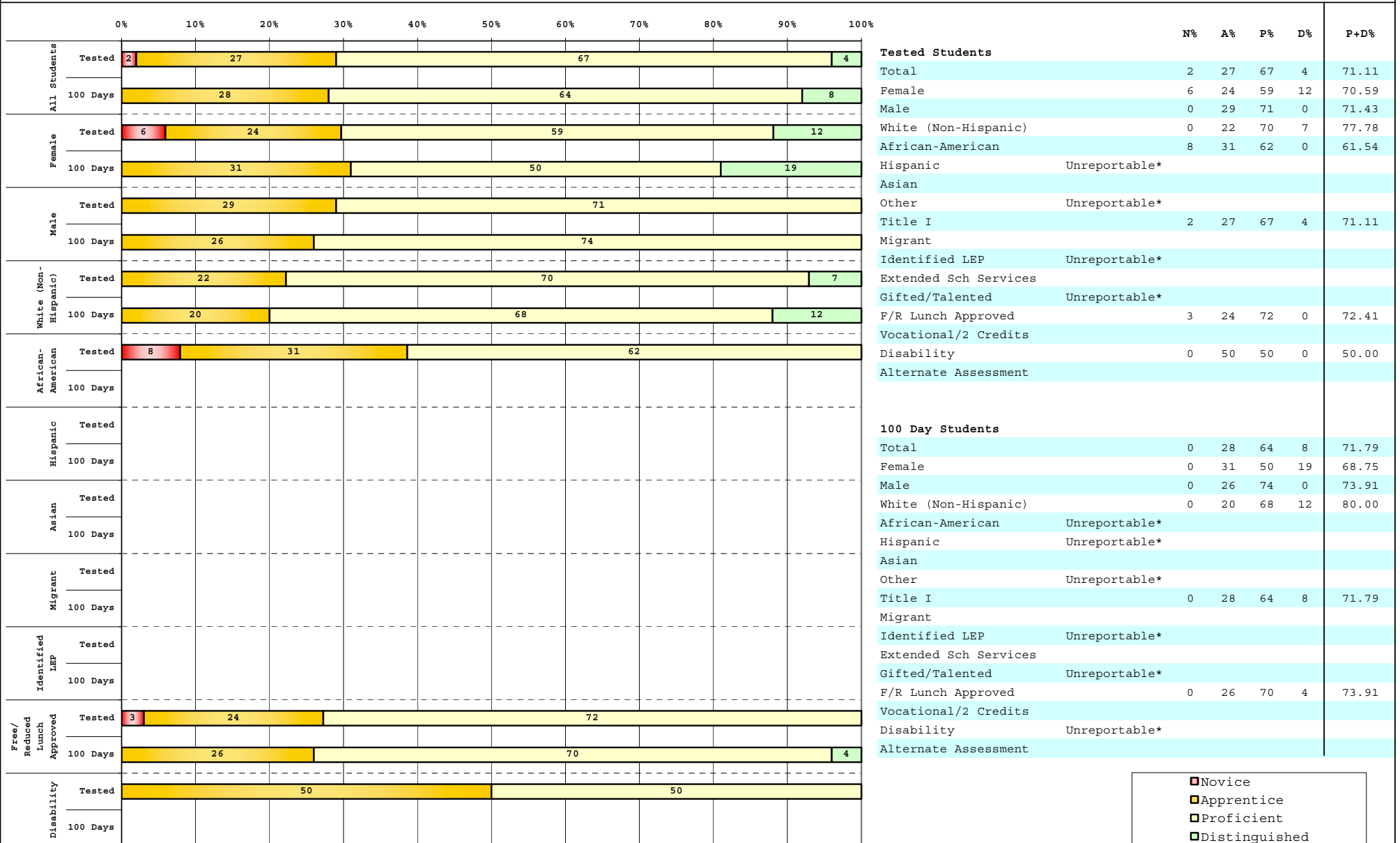


The horizontal bar represents the percent of students scoring at a performance level within a particular year. Percentages may not sum to 100% due to rounding.



2008-2009
INTERIM PERFORMANCE REPORT
WRITING ON-DEMAND DISAGGREGATION
Performance Level Percents

School: Yates Elementary School
 District: Fayette County
 Code: 165140
 Grade: 05



Percentage may not sum to 100% due to rounding. 'Unreportable*' indicates subpopulations with fewer than 10 students or subpopulations where all students score at the same performance level.



2008-2009
INTERIM PERFORMANCE REPORT
WRITING ON-DEMAND CORE CONTENT

School: Yates Elementary School
 District: Fayette County
 Code: 165140
 Grade: 05

WRITING PROMPT	SCHOOL												STATE												School
	No. Observations	Percents											Mean	Percents											Mean
	B	0	1	2	3	4	5	6	7	8		B	0	1	2	3	4	5	6	7	8				
Inform																									
1.X.X - Content	11	0	0	0	0	9	18	18	55	0	0	5.18	0	1	1	9	9	34	18	21	4	2	4.43	0.75	
2.X.X - Structure	11	0	0	0	9	0	18	27	45	0	0	5.00	0	1	2	9	10	35	19	19	3	1	4.33	0.67	
3.X.X - Convention	11	0	0	0	0	9	36	9	45	0	0	4.91	0	0	0	12	11	34	19	19	3	1	4.38	0.53	
Narrate for a purpose																									
1.X.X - Content	13	0	0	0	0	0	31	38	23	8	0	5.08	0	1	1	10	9	36	18	21	3	1	4.35	0.73	
2.X.X - Structure	13	0	0	0	0	0	31	31	31	8	0	5.15	0	1	2	10	10	37	17	19	3	1	4.27	0.88	
3.X.X - Convention	13	0	0	0	0	0	31	31	31	8	0	5.15	0	0	0	12	10	36	18	19	3	1	4.33	0.82	
Persuade																									
1.X.X - Content	15	0	0	0	7	7	40	40	7	0	0	4.33	0	1	1	8	8	33	19	21	5	3	4.50	-0.17	
2.X.X - Structure	15	0	0	0	13	0	40	40	7	0	0	4.27	0	2	2	9	10	33	19	20	5	2	4.42	-0.15	
3.X.X - Convention	15	0	0	0	13	0	40	40	7	0	0	4.27	0	0	0	11	10	32	19	20	5	2	4.50	-0.23	

MULTIPLE CHOICE	No. Items	SCHOOL						STATE						School
		No. Observations	Percents			Mean	Std. Err.	No. Observations	Percents			Mean	-State Mean	
		Correct	Incorrect	Omit/Mult				Correct	Incorrect	Omit/Mult				
4.x.x - Writing Process	52	468	79	21	0	0.79	0.02	585,936	73	27	0	0.73	0.06	
4.10.x - Revising	16	107	78	22	0	0.78	0.05	130,317	66	34	0	0.66	0.12	
4.11.x - Editing	36	361	79	21	0	0.79	0.02	455,619	75	24	0	0.75	0.04	