



Interim Performance Report

In March 2009, the Kentucky General Assembly passed Senate Bill 1 (SB1) that was subsequently signed into law by the Governor. SB1 calls for a significant overhaul of the state's assessment and accountability system. The new assessment system begins in the spring of 2012. The school years of 2008-2009, 2009-2010 and 2010-2011 are described in SB1 as an interim period. This three-year period allows Kentucky to develop the new assessment system and to carry on state and federal testing requirements.

The Interim Performance Report includes the Kentucky Core Content Test (KCCT) in Reading (grades 3-8 and 10), Mathematics (grades 3-8 and 11), Science (grades 4, 7 and 11), Social Studies (grades 5, 8 and 11) and Writing On-Demand (grades 5, 8 and 12). The KCCT is based on the Kentucky Core Content for Assessment (Version 4.1) and contains multiple choice and open response questions. The Writing On-Demand test uses writing prompts that require students to craft a piece of writing in a 60 minute period.

The KCCT is developed under the direction of content advisory committees of Kentucky educators who draft, review and select test questions. All test items are reviewed by a bias review committee to enhance the fairness of items for all Kentucky students.

The KCCT continues to fulfill the requirements of the federal statute known as the No Child Left Behind Act of 2001. A separate accountability report for No Child Left Behind (NCLB) is published by the Kentucky Department of Education.

The Interim Performance Report focuses entirely on the five state-required content areas and provides data for schools or districts. The data in this report is not used directly for state accountability; although, these results can fulfill the requirements of Senate Bill 168 from 2002 and may be used by schools or districts for their own local accountability needs.

Performance standards are based on descriptions of Novice, Apprentice, Proficient and Distinguished (NAPD) student performance levels specific to the content area and grade being assessed. The performance standards, in conjunction with Kentucky's Core Content for Assessment, should allow instruction to better focus on the content area to be taught and on how well students must demonstrate achievement in each content area.

Reporting Changes for 2009

Based on SB1, Kentucky will not be reporting state accountability and academic indices as in the past. The report does have several familiar pages with performance level (NAPD) trend, core content and disaggregation data per content area. Districts and schools will still see distributions of how students scored in the Novice (with sublevels), Apprentice (with sublevels), Proficient and Distinguished performance levels.

Confidentiality Changes

Due to federal regulations around the Family Education Rights and Privacy Act (FERPA), the numbers of students have been removed. Though there is a need to report as much data as possible, there is also a paramount need to maintain the confidential aspects of individual scores. When scores are reported in what is commonly called "small cells" where very few students may be categorized, there is the possibility of revealing individual scores when numbers are reported. Numbers are reported to each district in a confidential report that accompanies the public Interim Performance Report.

2008-2009

INTERIM PERFORMANCE REPORT

School: Veterans Park Elementary School

District: Fayette County

Code: 165012

Grade: PRIMARY-05

CONTENTS OF THIS REPORT

Introduction	1
Academic Trend Data	
Reading Results	2-8
Mathematics Results	9-15
Science Results	16-18
Social Studies Results	19-21
Writing Results	22-24

For more information, refer to the 2009 Interim Assessment Interpretative Guide on the Kentucky Department of Education Web site (www.education.ky.gov).





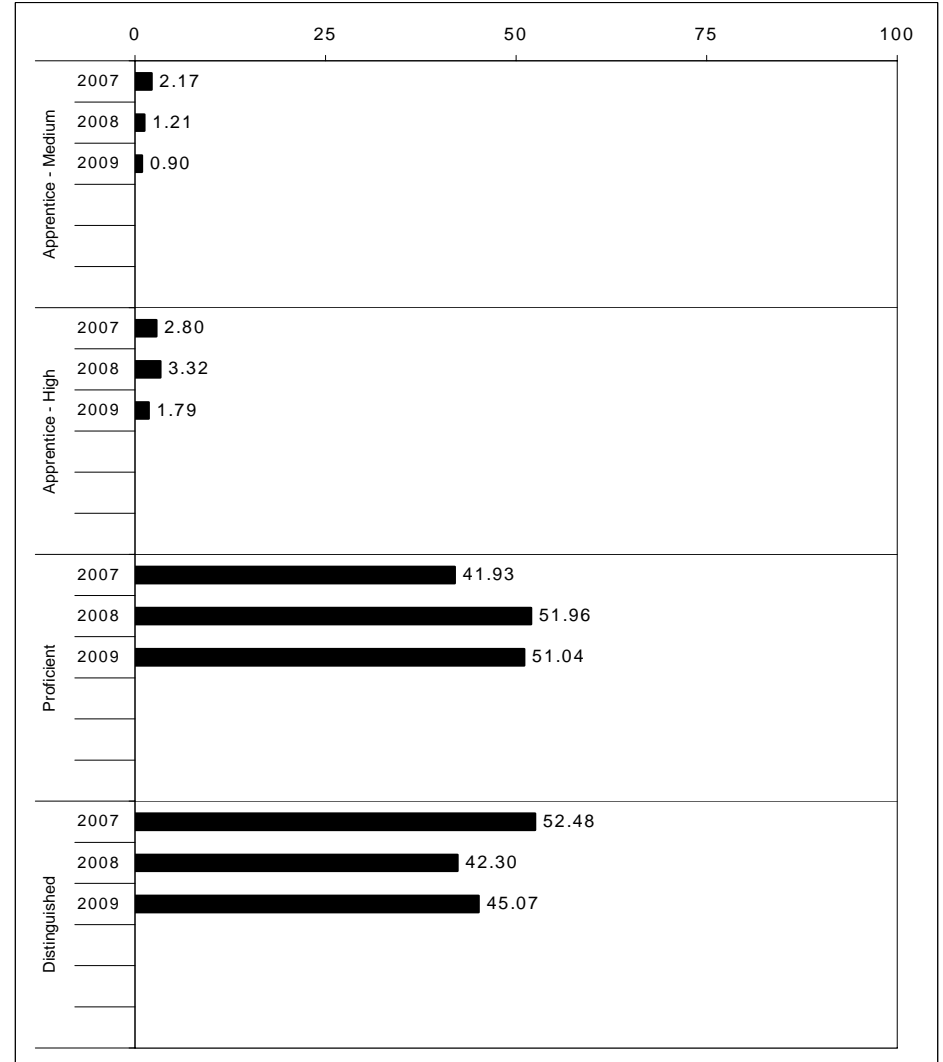
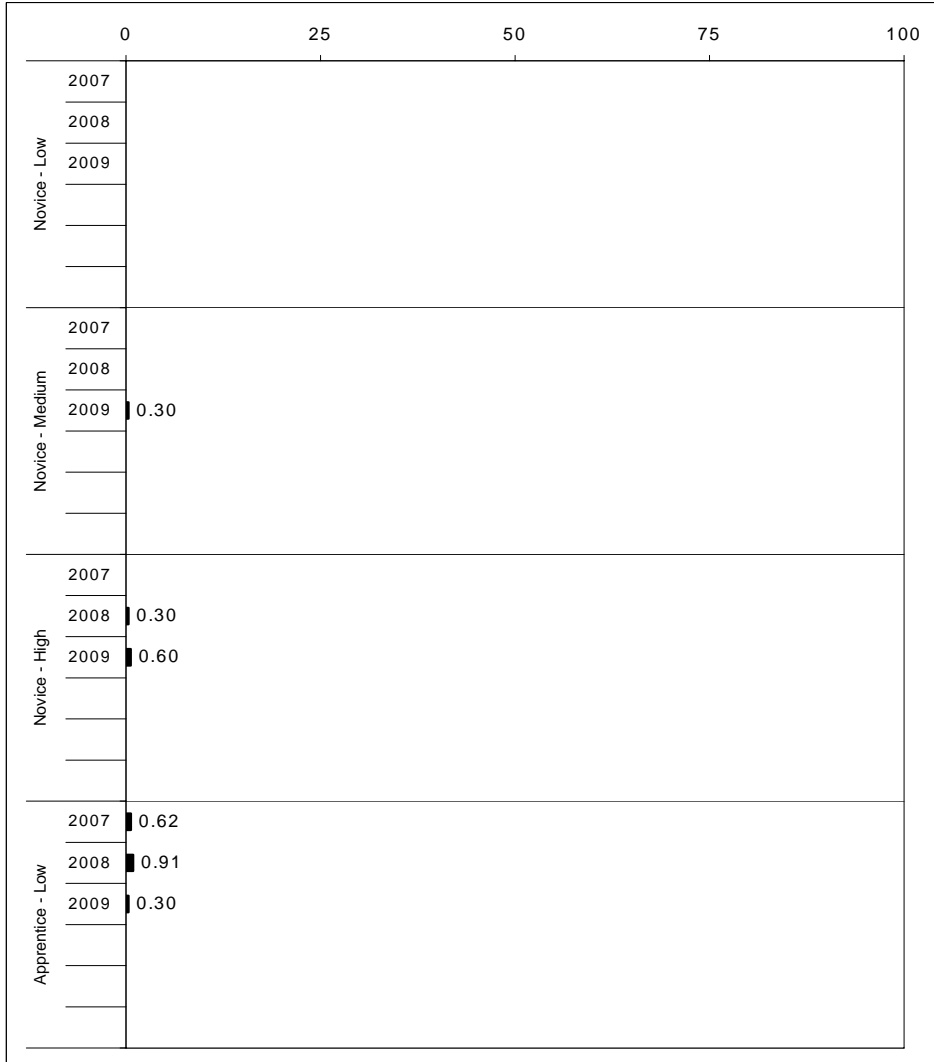
2008-2009
INTERIM PERFORMANCE REPORT
READING TREND DATA
Performance Level Percents

School: Veterans Park Elementary School

District: Fayette County

Code: 165012

Grade: ELEMENTARY



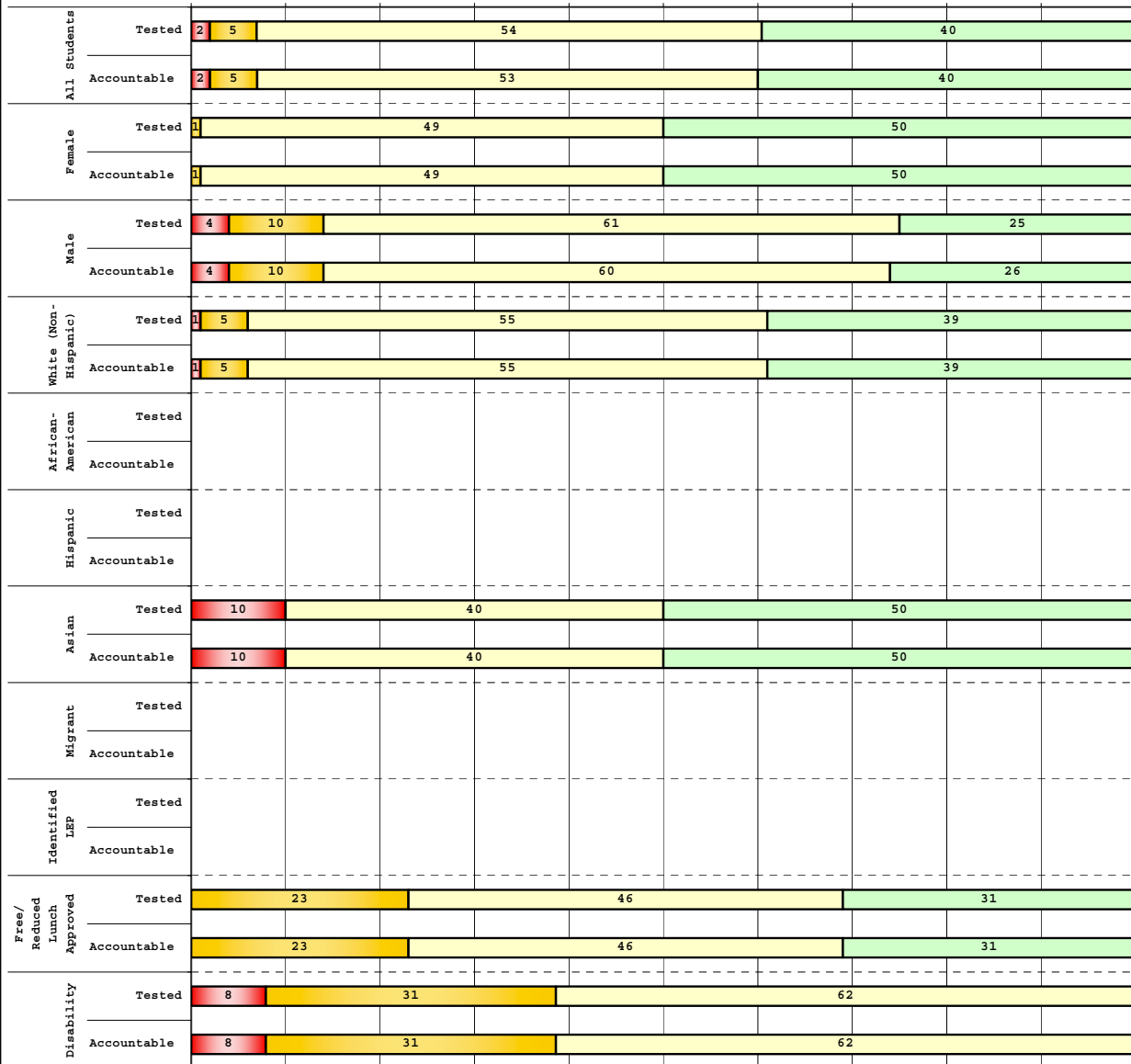
The horizontal bar represents the percent of students scoring at a performance level within a particular year. Percentages may not sum to 100% due to rounding.



**2008-2009
INTERIM PERFORMANCE REPORT
READING DISAGGREGATION
Performance Level Percents**

School: Veterans Park Elementary School
 District: Fayette County
 Code: 165012
 Grade: 03

0% 10% 20% 30% 40% 50% 60% 70% 80% 90% 100%



	N%	A%	P%	D%	P+D%
Tested Students					
Total	2	5	54	40	93.39
Female	0	1	49	50	98.57
Male	4	10	61	25	86.27
White (Non-Hispanic)	1	5	55	39	94.29
African-American	Unreportable*				
Hispanic	Unreportable*				
Asian	10	0	40	50	90.00
Other	Unreportable*				
Title I					
Migrant					
Identified LEP	Unreportable*				
Extended Sch Services					
Gifted/Talented	0	0	28	72	100.00
F/R Lunch Approved	0	23	46	31	76.92
Vocational/2 Credits					
Disability	8	31	62	0	61.54
Alternate Assessment	Unreportable*				
NCLB Accountable Students					
Total	2	5	53	40	93.33
Female	0	1	49	50	98.57
Male	4	10	60	26	86.00
White (Non-Hispanic)	1	5	55	39	94.23
African-American	Unreportable*				
Hispanic	Unreportable*				
Asian	10	0	40	50	90.00
Other	Unreportable*				
Title I					
Migrant					
Identified LEP	Unreportable*				
Extended Sch Services					
Gifted/Talented	0	0	28	72	100.00
F/R Lunch Approved	0	23	46	31	76.92
Vocational/2 Credits					
Disability	8	31	62	0	61.54
Alternate Assessment	Unreportable*				

■ Novice
■ Apprentice
■ Proficient
■ Distinguished

Percentage may not sum to 100% due to rounding. 'Unreportable*' indicates subpopulations with fewer than 10 students or subpopulations where all students score at the same performance level.



**2008-2009
INTERIM PERFORMANCE REPORT
READING DISAGGREGATION
Performance Level Percents**

School: Veterans Park Elementary School
District: Fayette County
Code: 165012
Grade: 04

		0%	10%	20%	30%	40%	50%	60%	70%	80%	90%	100%	N%	A%	P%	D%	P+D%	
All Students	Tested	1	59						40									
	Accountable	1	58						41									
Female	Tested	2	54					44										
	Accountable	2	52					46										
Male	Tested		63						37									
	Accountable		63						37									
White (Non-Hispanic)	Tested		57					43										
	Accountable		57					43										
African-American	Tested																	
	Accountable																	
Hispanic	Tested																	
	Accountable																	
Asian	Tested		50					50										
	Accountable		50					50										
Migrant	Tested																	
	Accountable																	
Identified LEP	Tested																	
	Accountable																	
Free/Reduced Lunch Approved	Tested	8	62					31										
	Accountable	9	55					36										
Disability	Tested	6	78							17								
	Accountable	6	78							17								

Tested Students		N%	A%	P%	D%	P+D%
Total		0	1	59	40	99.11
Female		0	2	54	44	98.08
Male		0	0	63	37	100.00
White (Non-Hispanic)		0	0	57	43	100.00
African-American	Unreportable*					
Hispanic	Unreportable*					
Asian		0	0	50	50	100.00
Other	Unreportable*					
Title I						
Migrant						
Identified LEP	Unreportable*					
Extended Sch Services						
Gifted/Talented		0	0	31	69	100.00
F/R Lunch Approved		0	8	62	31	92.31
Vocational/2 Credits						
Disability		0	6	78	17	94.44
Alternate Assessment	Unreportable*					
NCLB Accountable Students						
Total		0	1	58	41	99.08
Female		0	2	52	46	98.00
Male		0	0	63	37	100.00
White (Non-Hispanic)		0	0	57	43	100.00
African-American	Unreportable*					
Hispanic	Unreportable*					
Asian		0	0	50	50	100.00
Other	Unreportable*					
Title I						
Migrant						
Identified LEP	Unreportable*					
Extended Sch Services						
Gifted/Talented		0	0	31	69	100.00
F/R Lunch Approved		0	9	55	36	90.91
Vocational/2 Credits						
Disability		0	6	78	17	94.44
Alternate Assessment	Unreportable*					

■ Novice
■ Apprentice
■ Proficient
■ Distinguished

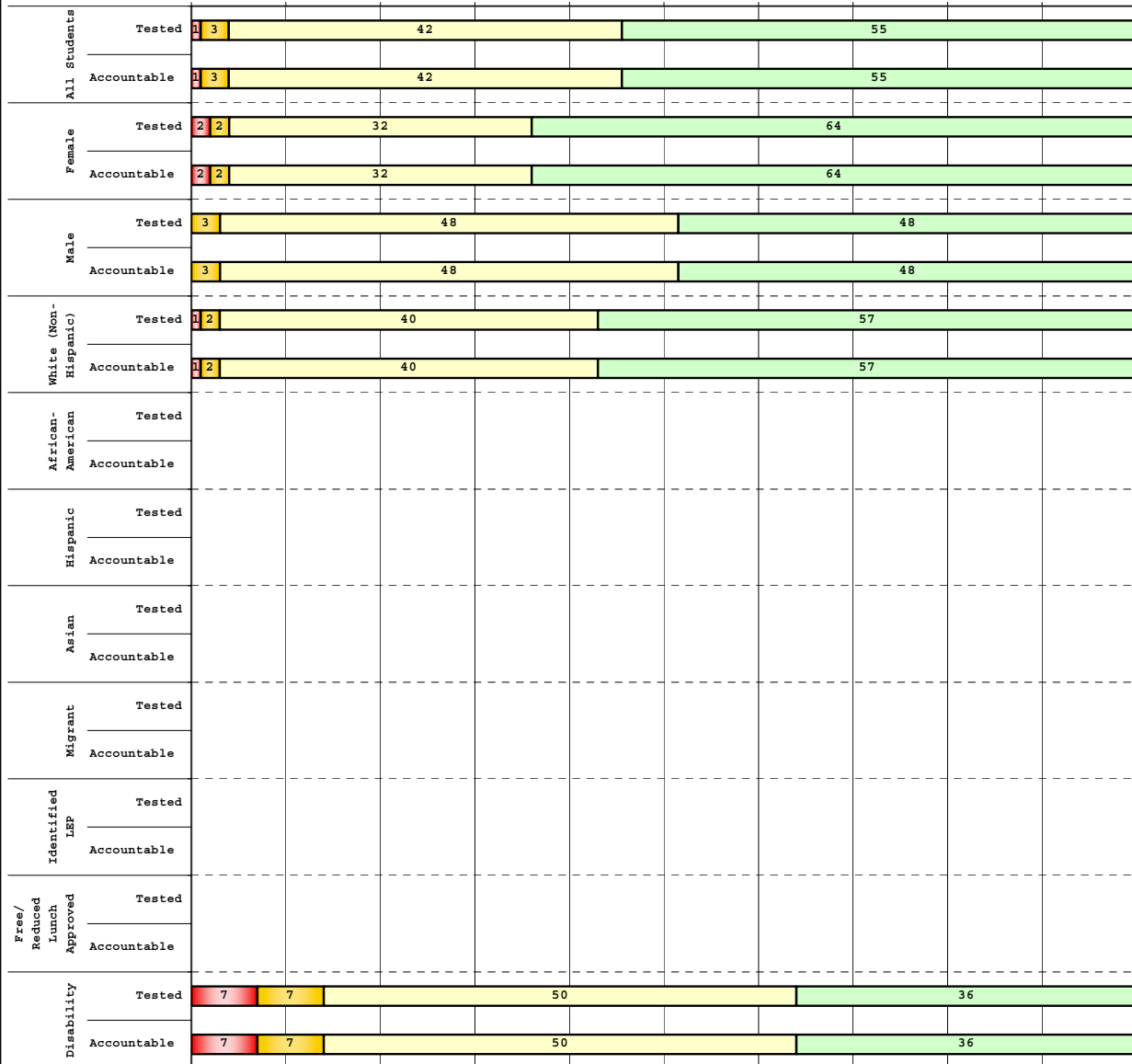
Percentage may not sum to 100% due to rounding. 'Unreportable*' indicates subpopulations with fewer than 10 students or subpopulations where all students score at the same performance level.



2008-2009
INTERIM PERFORMANCE REPORT
READING DISAGGREGATION
Performance Level Percents

School: Veterans Park Elementary School
 District: Fayette County
 Code: 165012
 Grade: 05

0% 10% 20% 30% 40% 50% 60% 70% 80% 90% 100%



		N%	A%	P%	D%	P+D%
Tested Students						
Total		1	3	42	55	96.23
Female		2	2	32	64	95.45
Male		0	3	48	48	96.77
White (Non-Hispanic)		1	2	40	57	96.91
African-American	Unreportable*					
Hispanic						
Asian	Unreportable*					
Other						
Title I						
Migrant						
Identified LEP						
Extended Sch Services	Unreportable*					
Gifted/Talented		0	0	17	83	100.00
F/R Lunch Approved	Unreportable*					
Vocational/2 Credits						
Disability		7	7	50	36	85.71
Alternate Assessment	Unreportable*					
NCLB Accountable Students						
Total		1	3	42	55	96.23
Female		2	2	32	64	95.45
Male		0	3	48	48	96.77
White (Non-Hispanic)		1	2	40	57	96.91
African-American	Unreportable*					
Hispanic						
Asian	Unreportable*					
Other						
Title I						
Migrant						
Identified LEP						
Extended Sch Services	Unreportable*					
Gifted/Talented		0	0	17	83	100.00
F/R Lunch Approved	Unreportable*					
Vocational/2 Credits						
Disability		7	7	50	36	85.71
Alternate Assessment	Unreportable*					

■ Novice
■ Apprentice
■ Proficient
■ Distinguished

Percentage may not sum to 100% due to rounding. 'Unreportable*' indicates subpopulations with fewer than 10 students or subpopulations where all students score at the same performance level.



2008-2009
INTERIM PERFORMANCE REPORT
READING CORE CONTENT

School: Veterans Park Elementary School
 District: Fayette County
 Code: 165012
 Grade: 03

	No. Items	No. Observations	SCHOOL								STATE								School - State Mean
			Percents						Mean	Std. Err.	Percents						Mean		
			B	0	1	2	3	4					No. Observations	B	0	1		2	3
OPEN RESPONSE																			
2.0.x - Developing Understanding	2	236	0	3	20	52	22	3	2.0	0.1	100,212	0	10	30	44	14	2	1.7	0.3
3.0.x - Interpreting Text	2	236	0	3	20	52	22	3	2.0	0.1	100,212	0	10	30	44	14	2	1.7	0.3
MULTIPLE CHOICE																			
1.0.x - Forming a Foundation	32	925	91	10	0				0.90	0.01	392,589	83	17	0				0.83	0.07
2.0.x - Developing Understanding	89	2,343	91	9	0				0.91	0.01	993,477	80	20	0				0.80	0.11
3.0.x - Interpreting Text	31	1,094	88	12	0				0.88	0.01	468,115	77	23	0				0.77	0.11
5.0.x - Critical Stance	15	500	91	9	0				0.91	0.02	208,359	79	21	0				0.79	0.12



2008-2009
INTERIM PERFORMANCE REPORT
READING CORE CONTENT

School: Veterans Park Elementary School
 District: Fayette County
 Code: 165012
 Grade: 04

	No. Items	No. Observations	SCHOOL								Std. Err.	No. Observations	STATE								School -State Mean
			B	0	1	2	3	4	Mean	B			0	1	2	3	4	Mean			
OPEN RESPONSE																					
2.0.x - Developing Understanding	5	179	0	0	7	47	36	10	2.5	0.1	81,849	0	3	24	52	18	3	1.9	0.6		
3.0.x - Interpreting Text	6	288	0	0	5	39	40	16	2.7	0.1	131,199	0	4	22	45	23	5	2.0	0.7		
MULTIPLE CHOICE																					
1.0.x - Forming a Foundation	34	880	83	17	0				0.83	0.02	401,452	72	28	0				0.71	0.12		
2.0.x - Developing Understanding	76	1,908	84	16	0				0.84	0.01	868,422	73	27	0				0.73	0.11		
3.0.x - Interpreting Text	29	613	89	11	0				0.89	0.02	278,648	79	21	0				0.79	0.10		
5.0.x - Critical Stance	9	342	83	18	0				0.82	0.02	155,704	74	26	0				0.74	0.08		



2008-2009
INTERIM PERFORMANCE REPORT
READING CORE CONTENT

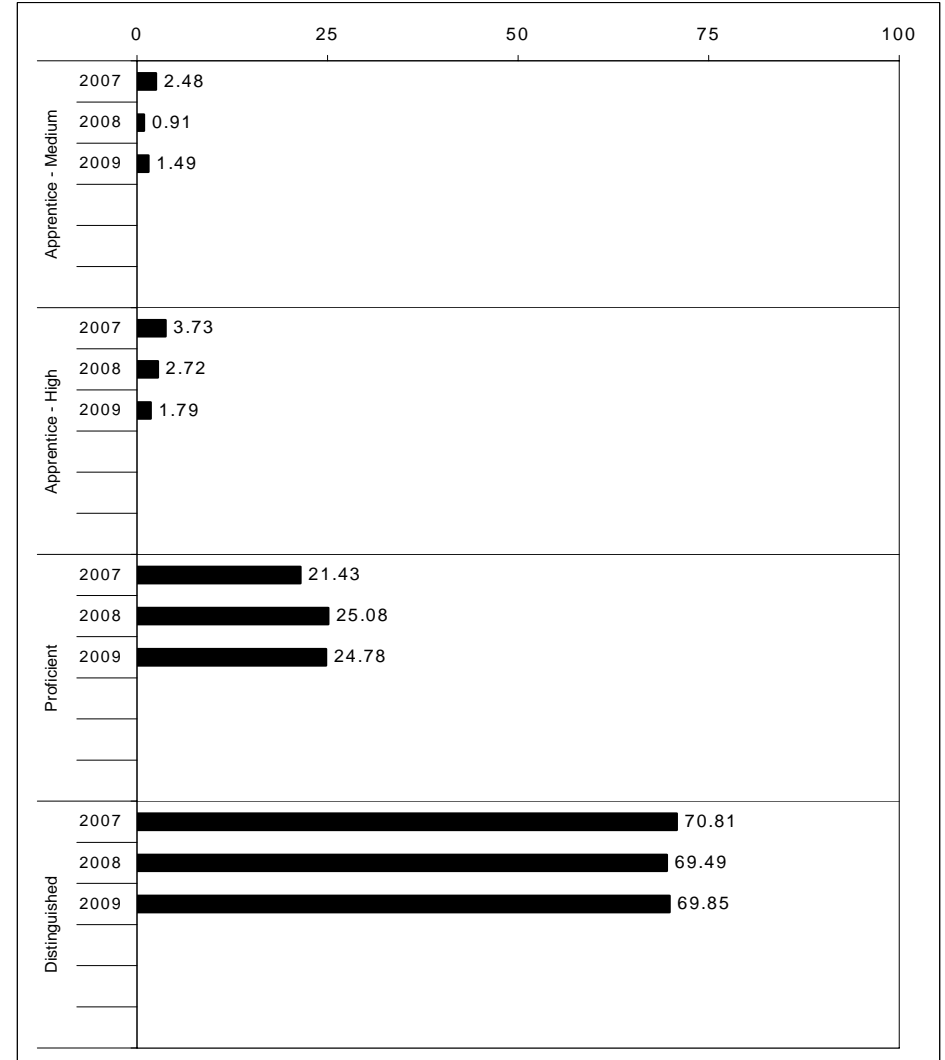
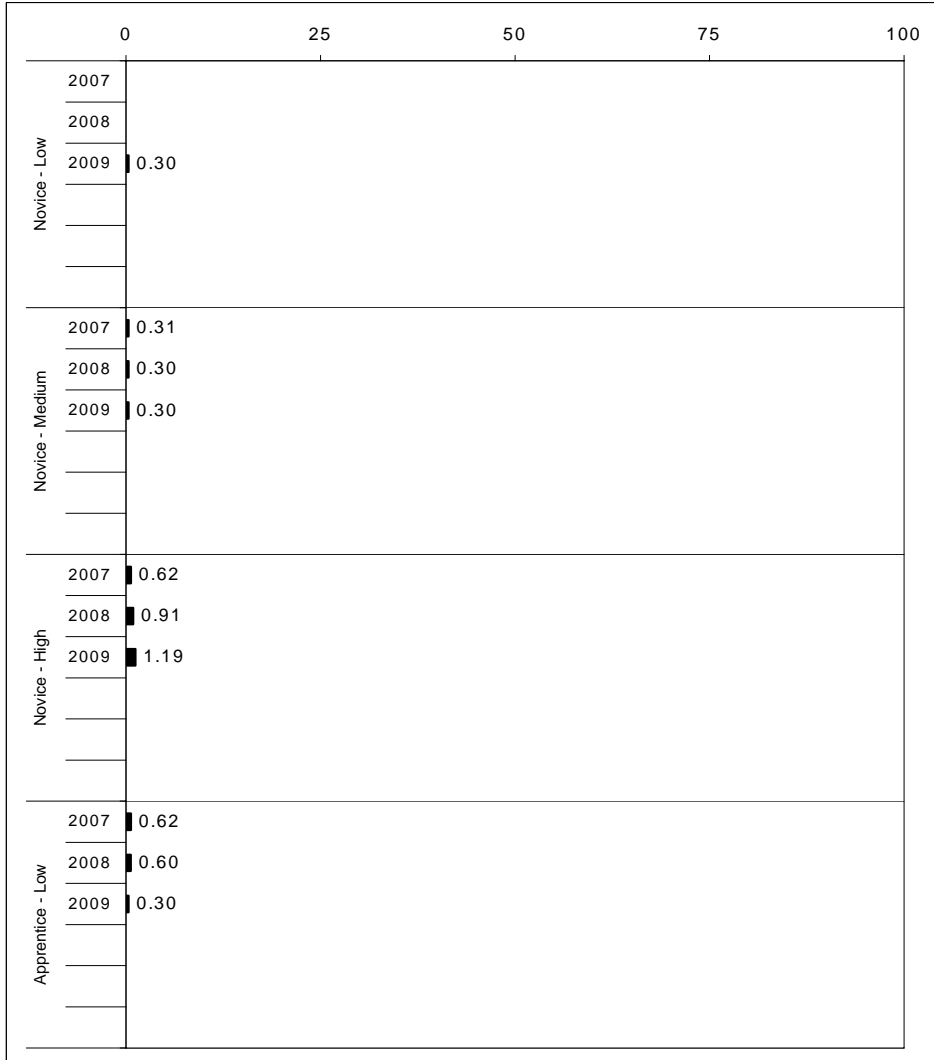
School: Veterans Park Elementary School
 District: Fayette County
 Code: 165012
 Grade: 05

	No. Items	No. Observations	SCHOOL							Mean	Std. Err.	No. Observations	STATE							Mean	School -State Mean
			B	0	1	2	3	4	B				0	1	2	3	4				
OPEN RESPONSE																					
2.0.x - Developing Understanding	6	193	0	1	5	39	39	17	2.7	0.1	89,507	0	5	23	48	20	5	2.0	0.7		
3.0.x - Interpreting Text	6	280	0	0	9	44	34	13	2.5	0.1	130,403	0	5	21	50	19	4	2.0	0.5		
MULTIPLE CHOICE																					
1.0.x - Forming a Foundation	28	574	90	10	0				0.90	0.02	268,187	74	26	0				0.74	0.16		
2.0.x - Developing Understanding	71	1,770	91	9	0				0.91	0.01	823,068	80	20	0				0.80	0.11		
3.0.x - Interpreting Text	27	734	92	8	0				0.92	0.01	341,653	81	19	0				0.81	0.11		
5.0.x - Critical Stance	17	649	89	11	0				0.89	0.02	300,671	75	25	0				0.75	0.14		



2008-2009
INTERIM PERFORMANCE REPORT
MATHEMATICS TREND DATA
Performance Level Percents

School: Veterans Park Elementary School
 District: Fayette County
 Code: 165012
 Grade: ELEMENTARY



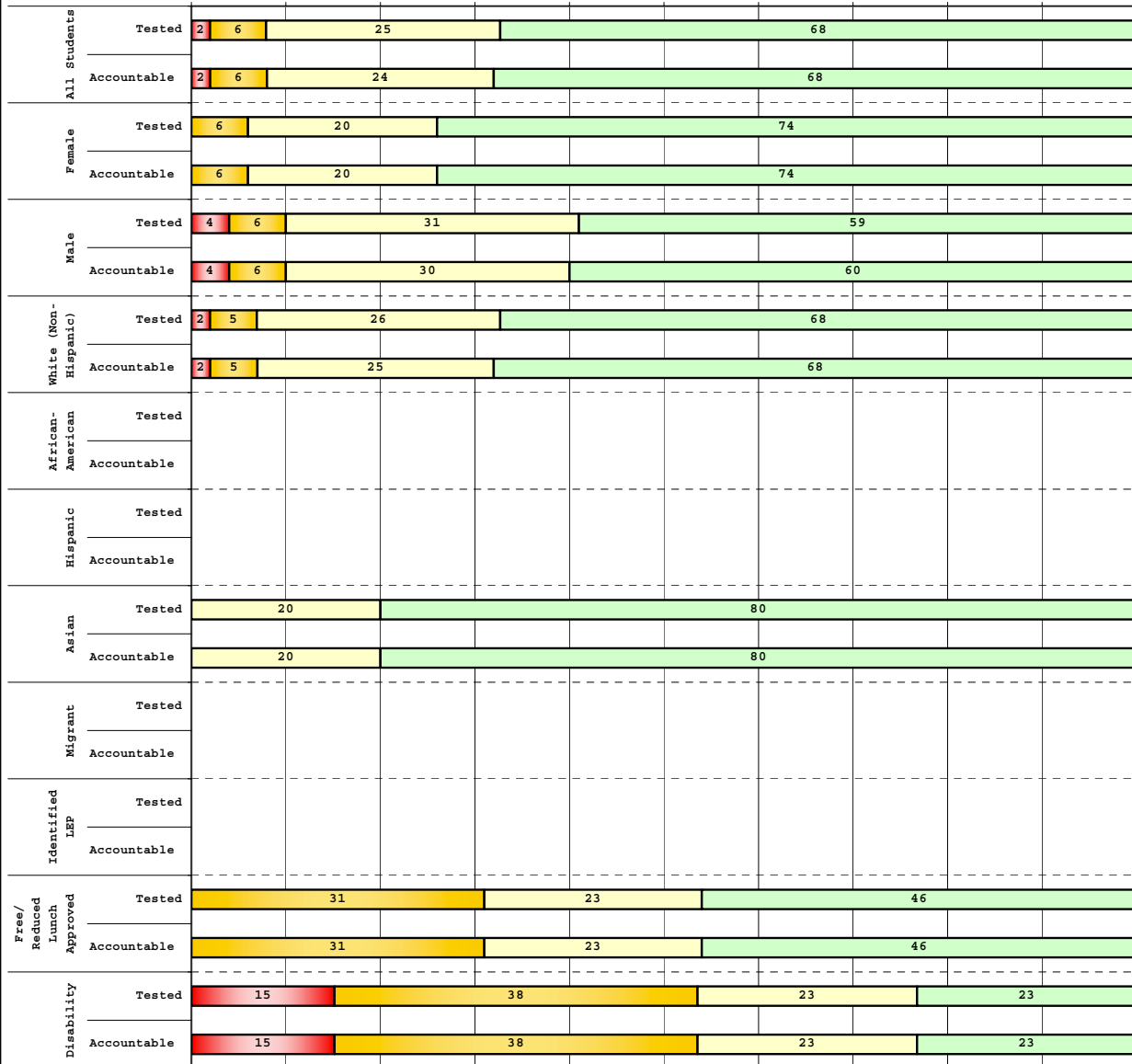
The horizontal bar represents the percent of students scoring at a performance level within a particular year. Percentages may not sum to 100% due to rounding.



2008-2009
INTERIM PERFORMANCE REPORT
MATHEMATICS DISAGGREGATION
Performance Level Percents

School: Veterans Park Elementary School
 District: Fayette County
 Code: 165012
 Grade: 03

0% 10% 20% 30% 40% 50% 60% 70% 80% 90% 100%



Category	N%	A%	P%	D%	P+D%
Tested Students					
Total	2	6	25	68	92.56
Female	0	6	20	74	94.29
Male	4	6	31	59	90.20
White (Non-Hispanic)	2	5	26	68	93.33
African-American	Unreportable*				
Hispanic	Unreportable*				
Asian	0	0	20	80	100.00
Other	Unreportable*				
Title I					
Migrant					
Identified LEP	Unreportable*				
Extended Sch Services					
Gifted/Talented	0	0	8	92	100.00
F/R Lunch Approved	0	31	23	46	69.23
Vocational/2 Credits					
Disability	15	38	23	23	46.15
Alternate Assessment	Unreportable*				
NCLB Accountable Students					
Total	2	6	24	68	92.50
Female	0	6	20	74	94.29
Male	4	6	30	60	90.00
White (Non-Hispanic)	2	5	25	68	93.27
African-American	Unreportable*				
Hispanic	Unreportable*				
Asian	0	0	20	80	100.00
Other	Unreportable*				
Title I					
Migrant					
Identified LEP	Unreportable*				
Extended Sch Services					
Gifted/Talented	0	0	8	92	100.00
F/R Lunch Approved	0	31	23	46	69.23
Vocational/2 Credits					
Disability	15	38	23	23	46.15
Alternate Assessment	Unreportable*				

■ Novice
■ Apprentice
■ Proficient
■ Distinguished

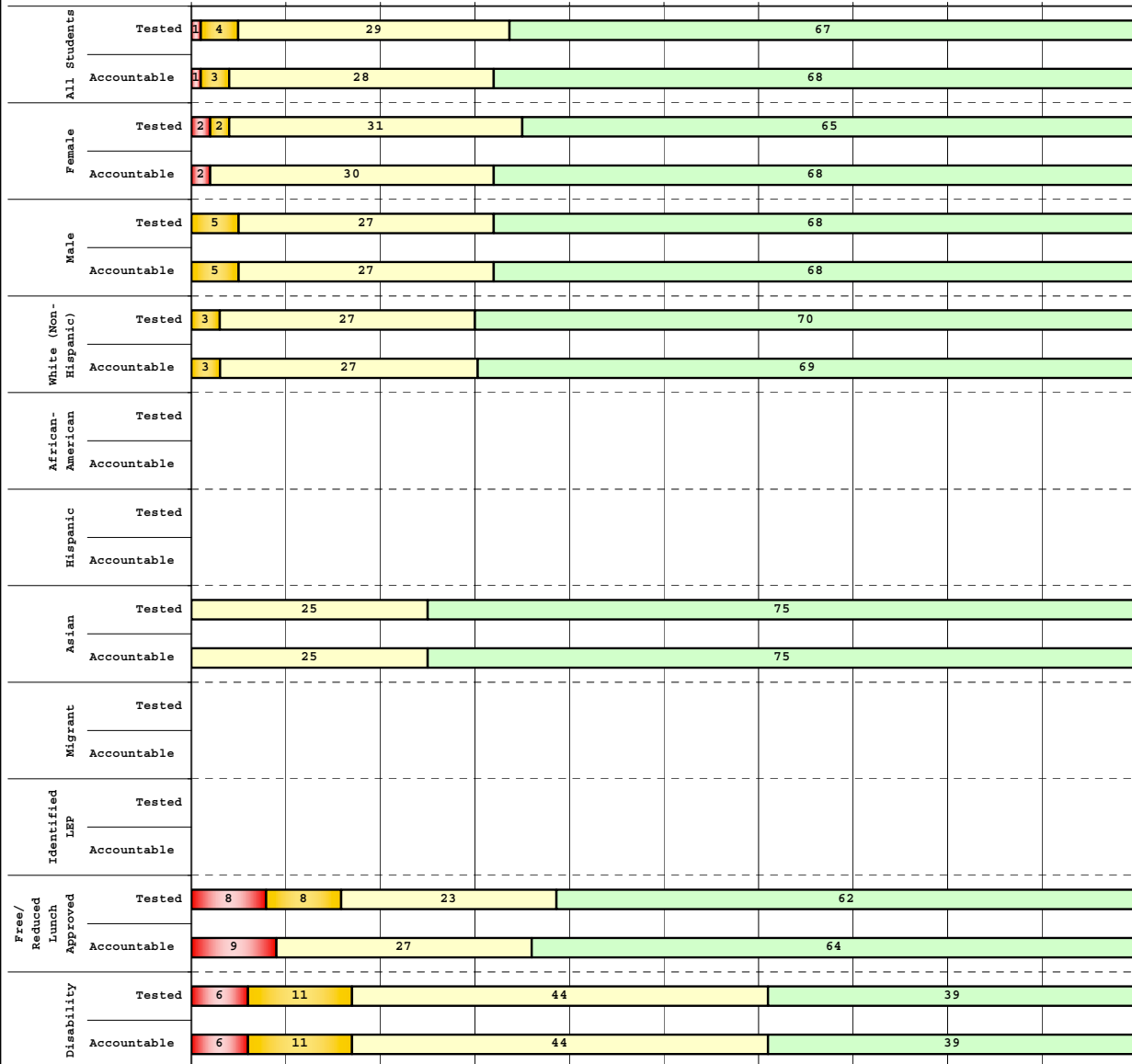
Percentage may not sum to 100% due to rounding. 'Unreportable*' indicates subpopulations with fewer than 10 students or subpopulations where all students score at the same performance level.



**2008-2009
INTERIM PERFORMANCE REPORT
MATHEMATICS DISAGGREGATION
Performance Level Percents**

School: Veterans Park Elementary School
District: Fayette County
Code: 165012
Grade: 04

0% 10% 20% 30% 40% 50% 60% 70% 80% 90% 100%



Tested Students

	N%	A%	P%	D%	P+D%
Total	1	4	29	67	95.54
Female	2	2	31	65	96.15
Male	0	5	27	68	95.00
White (Non-Hispanic)	0	3	27	70	96.63
African-American	Unreportable*				
Hispanic	Unreportable*				
Asian	0	0	25	75	100.00
Other	Unreportable*				
Title I					
Migrant					
Identified LEP	Unreportable*				
Extended Sch Services					
Gifted/Talented	0	0	8	92	100.00
F/R Lunch Approved	8	8	23	62	84.62
Vocational/2 Credits					
Disability	6	11	44	39	83.33
Alternate Assessment	Unreportable*				
NCLB Accountable Students					
Total	1	3	28	68	96.33
Female	2	0	30	68	98.00
Male	0	5	27	68	94.92
White (Non-Hispanic)	0	3	27	69	96.59
African-American	Unreportable*				
Hispanic	Unreportable*				
Asian	0	0	25	75	100.00
Other	Unreportable*				
Title I					
Migrant					
Identified LEP	Unreportable*				
Extended Sch Services					
Gifted/Talented	0	0	8	92	100.00
F/R Lunch Approved	9	0	27	64	90.91
Vocational/2 Credits					
Disability	6	11	44	39	83.33
Alternate Assessment	Unreportable*				

■ Novice
■ Apprentice
■ Proficient
■ Distinguished

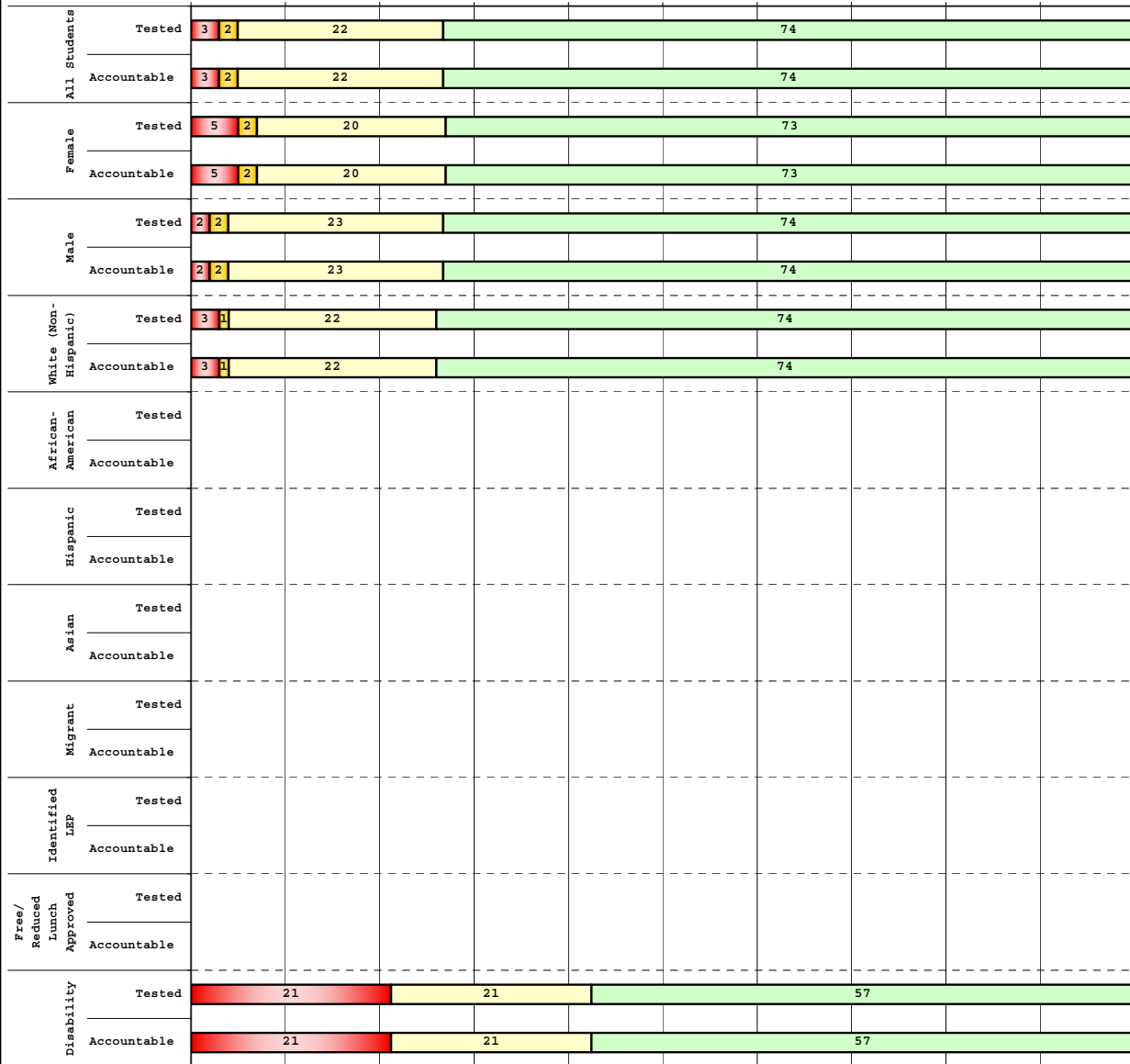
Percentage may not sum to 100% due to rounding. 'Unreportable*' indicates subpopulations with fewer than 10 students or subpopulations where all students score at the same performance level.



2008-2009
INTERIM PERFORMANCE REPORT
MATHEMATICS DISAGGREGATION
Performance Level Percents

School: Veterans Park Elementary School
 District: Fayette County
 Code: 165012
 Grade: 05

0% 10% 20% 30% 40% 50% 60% 70% 80% 90% 100%



		N%	A%	P%	D%	P+D%
Tested Students						
Total		3	2	22	74	95.28
Female		5	2	20	73	93.18
Male		2	2	23	74	96.77
White (Non-Hispanic)		3	1	22	74	95.88
African-American	Unreportable*					
Hispanic						
Asian	Unreportable*					
Other						
Title I						
Migrant						
Identified LEP						
Extended Sch Services	Unreportable*					
Gifted/Talented	Unreportable*					
F/R Lunch Approved	Unreportable*					
Vocational/2 Credits						
Disability		21	0	21	57	78.57
Alternate Assessment	Unreportable*					
NCLB Accountable Students						
Total		3	2	22	74	95.28
Female		5	2	20	73	93.18
Male		2	2	23	74	96.77
White (Non-Hispanic)		3	1	22	74	95.88
African-American	Unreportable*					
Hispanic						
Asian	Unreportable*					
Other						
Title I						
Migrant						
Identified LEP						
Extended Sch Services	Unreportable*					
Gifted/Talented	Unreportable*					
F/R Lunch Approved	Unreportable*					
Vocational/2 Credits						
Disability		21	0	21	57	78.57
Alternate Assessment	Unreportable*					

Novice
 Apprentice
 Proficient
 Distinguished

Percentage may not sum to 100% due to rounding. 'Unreportable*' indicates subpopulations with fewer than 10 students or subpopulations where all students score at the same performance level.



2008-2009
INTERIM PERFORMANCE REPORT
MATHEMATICS CORE CONTENT

School: Veterans Park Elementary School
 District: Fayette County
 Code: 165012
 Grade: 03

	No. Items	No. Observations	SCHOOL								STATE								School -State Mean
			Percents						Mean	Std. Err.	Percents						Mean		
			B	0	1	2	3	4					No. Observations	B	0	1		2	3
OPEN RESPONSE																			
1.x.x - Number Prop Oper	5	295	0	9	25	34	16	16	2.1	0.1	125,243	0	21	35	26	10	8	1.5	0.6
2.x.x - Measurement	1	20	0	10	10	20	5	55	2.9	0.3	8,325	0	25	5	30	14	25	2.1	0.8
3.x.x - Geometry	2	40	0	0	23	35	13	30	2.5	0.2	16,777	0	8	24	35	13	20	2.1	0.4
4.x.x - Data Analysis & Probabilit	1	118	0	1	4	12	25	58	3.4	0.1	50,106	0	9	13	19	27	32	2.6	0.8
5.x.x - Algebraic Thinking	2	137	0	1	4	12	27	57	3.4	0.1	58,404	0	9	14	19	28	31	2.6	0.8
MULTIPLE CHOICE																			
1.x.x - Number Prop Oper	32	1,908	Correct	Incorrect	Omit/Mult				0.87	0.01	810,106	Correct	Incorrect	Omit/Mult				0.74	0.13
2.x.x - Measurement	7	432	91	10	0				0.91	0.02	183,647	81	18	0				0.81	0.10
3.x.x - Geometry	18	944	91	9	0				0.91	0.01	400,848	85	15	0				0.85	0.06
4.x.x - Data Analysis & Probabilit	8	453	85	14	0				0.85	0.02	192,126	69	31	0				0.69	0.16
5.x.x - Algebraic Thinking	11	511	89	11	0				0.89	0.02	217,089	78	22	0				0.78	0.11



2008-2009
INTERIM PERFORMANCE REPORT
MATHEMATICS CORE CONTENT

School: Veterans Park Elementary School
 District: Fayette County
 Code: 165012
 Grade: 04

	No. Items	No. Observations	SCHOOL								Std. Err.	No. Observations	STATE								School -State Mean
			B	0	1	2	3	4	Mean	B			0	1	2	3	4	Mean			
OPEN RESPONSE																					
1.x.x - Number Prop Oper	4	162	0	4	11	25	23	36	2.8	0.1	73,656	0	17	24	29	19	12	1.9	0.9		
2.x.x - Measurement	1	18	0	22	22	17	17	22	1.9	0.4	8,195	0	43	13	10	20	13	1.5	0.4		
3.x.x - Geometry	2	125	0	5	12	12	19	52	3.0	0.1	57,352	0	11	20	17	19	33	2.4	0.6		
4.x.x - Data Analysis & Probabilit	1	18	0	0	17	39	28	17	2.4	0.2	8,152	0	5	36	29	23	6	1.9	0.5		
5.x.x - Algebraic Thinking	2	127	1	0	13	31	31	24	2.6	0.1	57,508	0	5	27	32	25	11	2.1	0.5		
MULTIPLE CHOICE																					
1.x.x - Number Prop Oper	31	1,461	83	16	0				0.83	0.01	664,194	67	33	0				0.67	0.16		
2.x.x - Measurement	7	306	83	17	0				0.83	0.03	139,170	62	38	0				0.62	0.21		
3.x.x - Geometry	14	611	87	13	0				0.87	0.02	278,460	77	23	0				0.77	0.10		
4.x.x - Data Analysis & Probabilit	12	667	86	14	1				0.85	0.02	303,394	71	29	0				0.71	0.14		
5.x.x - Algebraic Thinking	11	556	82	17	1				0.82	0.02	253,829	69	31	0				0.69	0.13		



2008-2009
INTERIM PERFORMANCE REPORT
MATHEMATICS CORE CONTENT

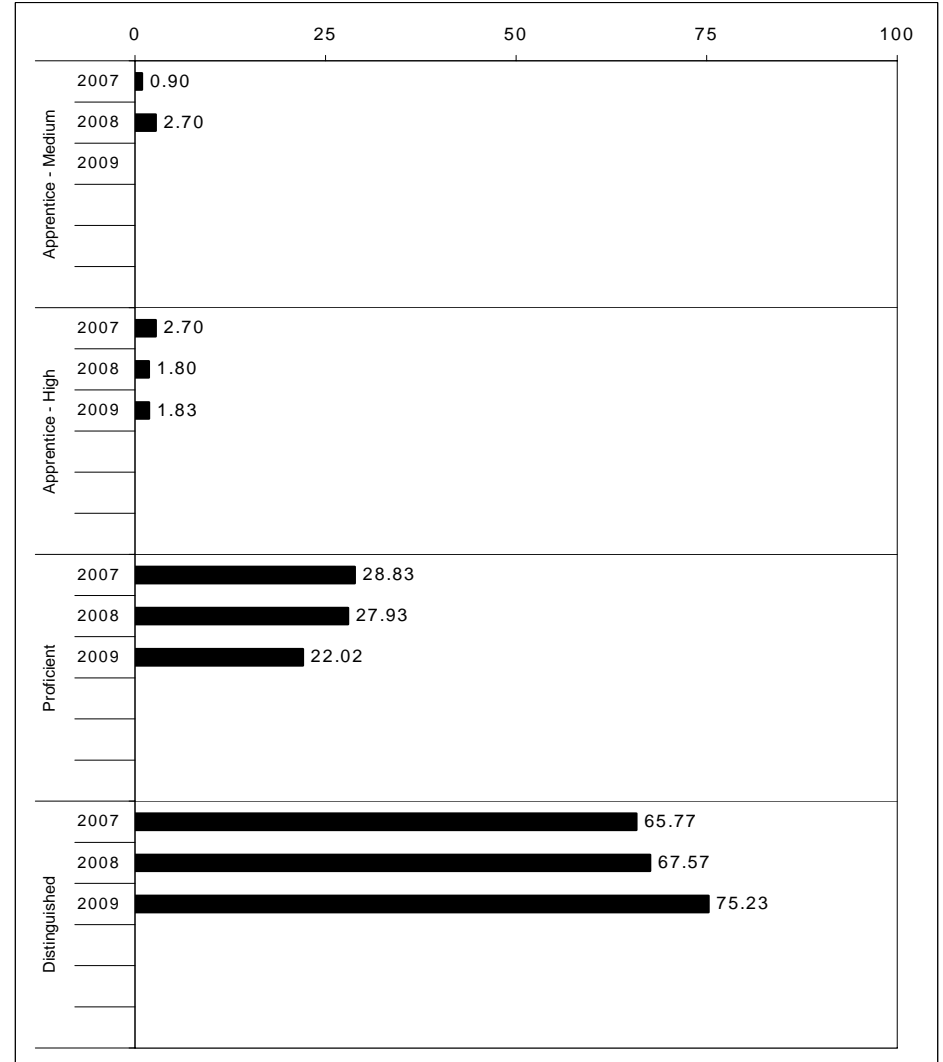
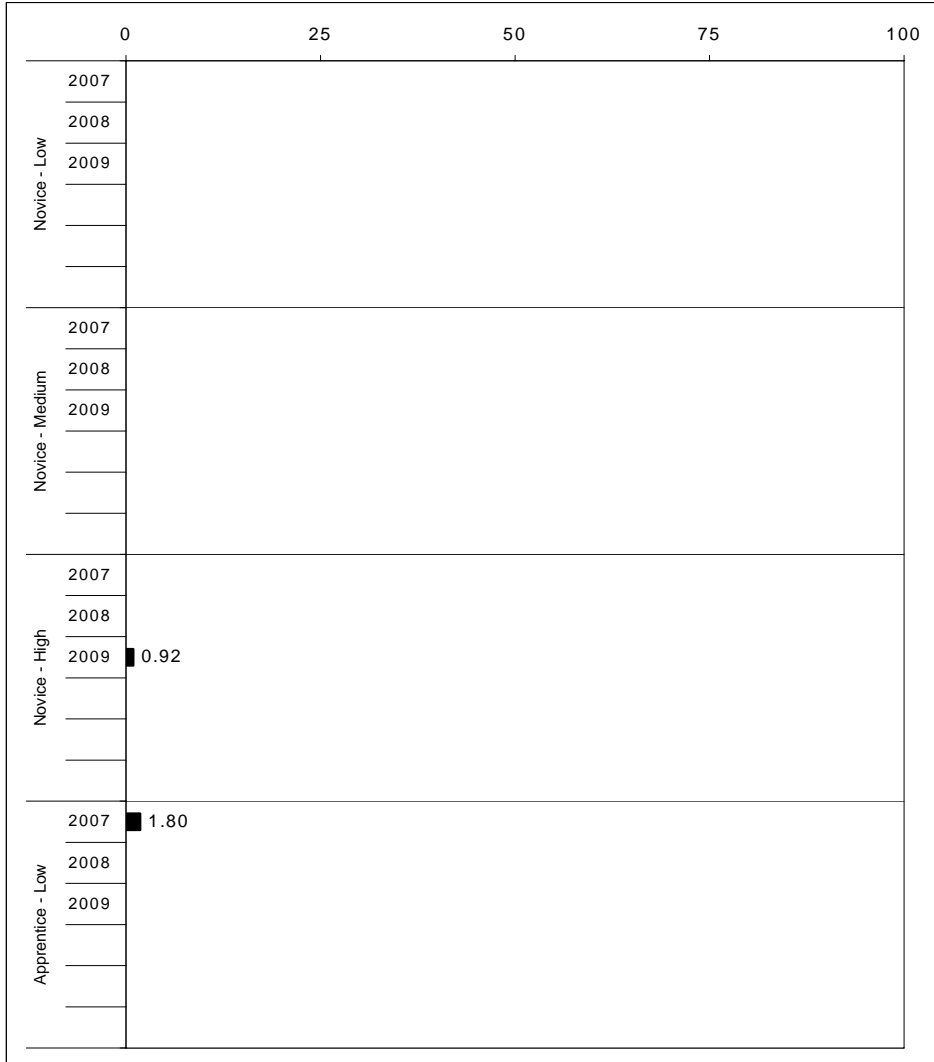
School: Veterans Park Elementary School
 District: Fayette County
 Code: 165012
 Grade: 05

	No. Items	No. Observations	SCHOOL								Std. Err.	No. Observations	STATE								School -State Mean
			B	0	1	2	3	4	Mean	B			0	1	2	3	4	Mean			
OPEN RESPONSE																					
1.x.x - Number Prop Oper	4	157	0	3	4	19	21	54	3.2	0.1	73,199	0	8	20	18	25	29	2.5	0.7		
2.x.x - Measurement	1	18	0	11	0	22	33	33	2.8	0.3	8,380	0	37	30	13	10	11	1.3	1.5		
3.x.x - Geometry	2	122	0	0	12	21	34	32	2.9	0.1	56,900	0	6	24	30	26	14	2.2	0.7		
4.x.x - Data Analysis & Probabilit	1	105	0	5	11	10	17	57	3.1	0.1	48,828	0	15	18	15	17	35	2.4	0.7		
5.x.x - Algebraic Thinking	1	18	0	6	6	22	17	50	3.0	0.3	8,005	0	13	15	20	17	35	2.5	0.5		
MULTIPLE CHOICE																					
1.x.x - Number Prop Oper	29	1,383	Correct	Incorrect	Omit/Mult				0.87	0.01	643,144	Correct	Incorrect	Omit/Mult				0.63	0.24		
2.x.x - Measurement	9	333	87	13	0				0.88	0.03	154,489	63	37	0				0.62	0.26		
3.x.x - Geometry	14	595	88	12	0				0.88	0.02	276,516	78	22	0				0.78	0.10		
4.x.x - Data Analysis & Probabilit	11	542	85	15	0				0.85	0.02	252,212	64	36	0				0.64	0.21		
5.x.x - Algebraic Thinking	10	525	86	14	0				0.86	0.02	244,140	65	35	0				0.65	0.21		



2008-2009
INTERIM PERFORMANCE REPORT
SCIENCE TREND DATA
Performance Level Percents

School: Veterans Park Elementary School
 District: Fayette County
 Code: 165012
 Grade: 04

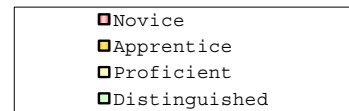
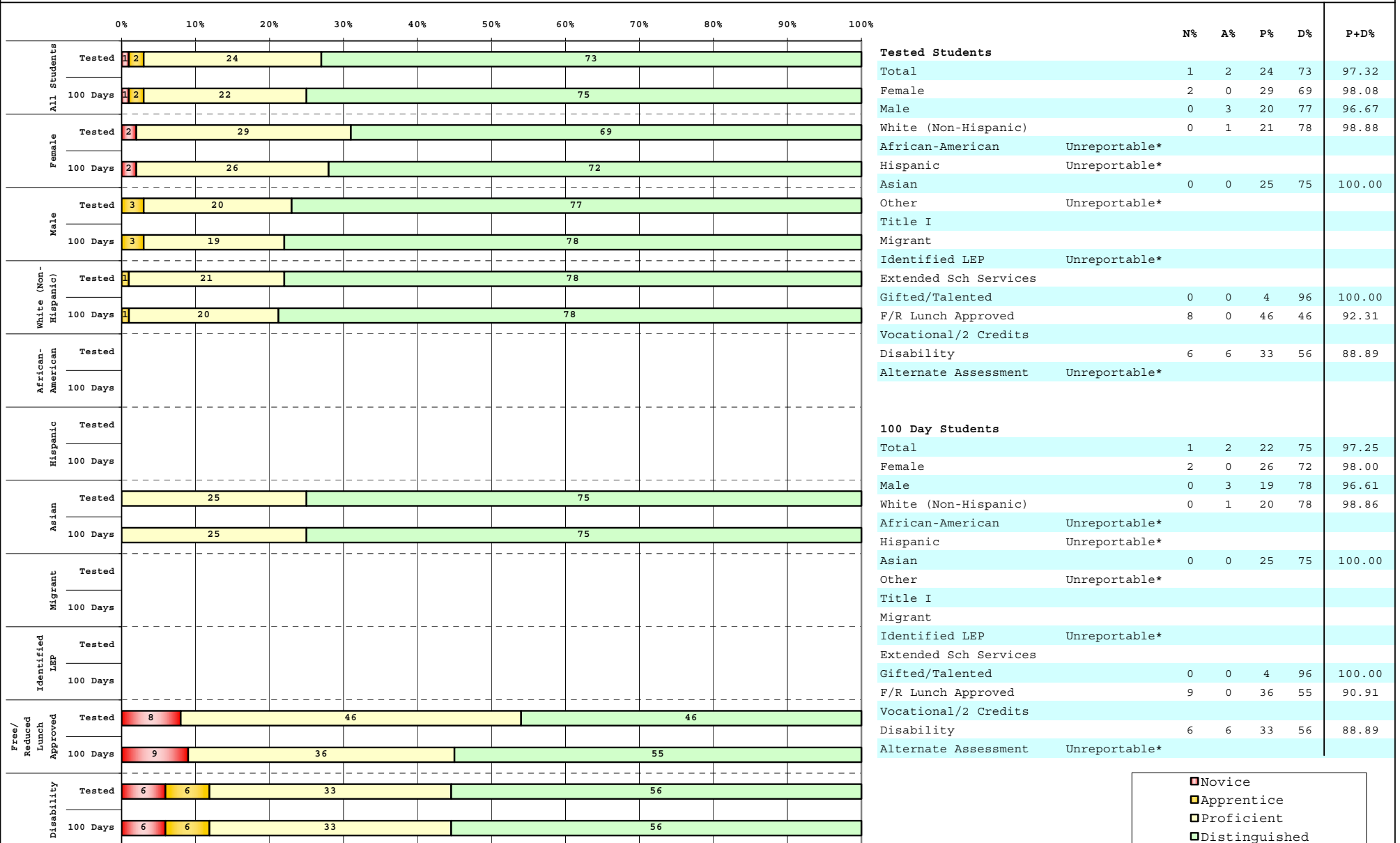


The horizontal bar represents the percent of students scoring at a performance level within a particular year. Percentages may not sum to 100% due to rounding.



2008-2009
INTERIM PERFORMANCE REPORT
SCIENCE DISAGGREGATION
Performance Level Percents

School: Veterans Park Elementary School
 District: Fayette County
 Code: 165012
 Grade: 04



Percentage may not sum to 100% due to rounding. 'Unreportable*' indicates subpopulations with fewer than 10 students or subpopulations where all students score at the same performance level.



2008-2009
INTERIM PERFORMANCE REPORT
SCIENCE CORE CONTENT

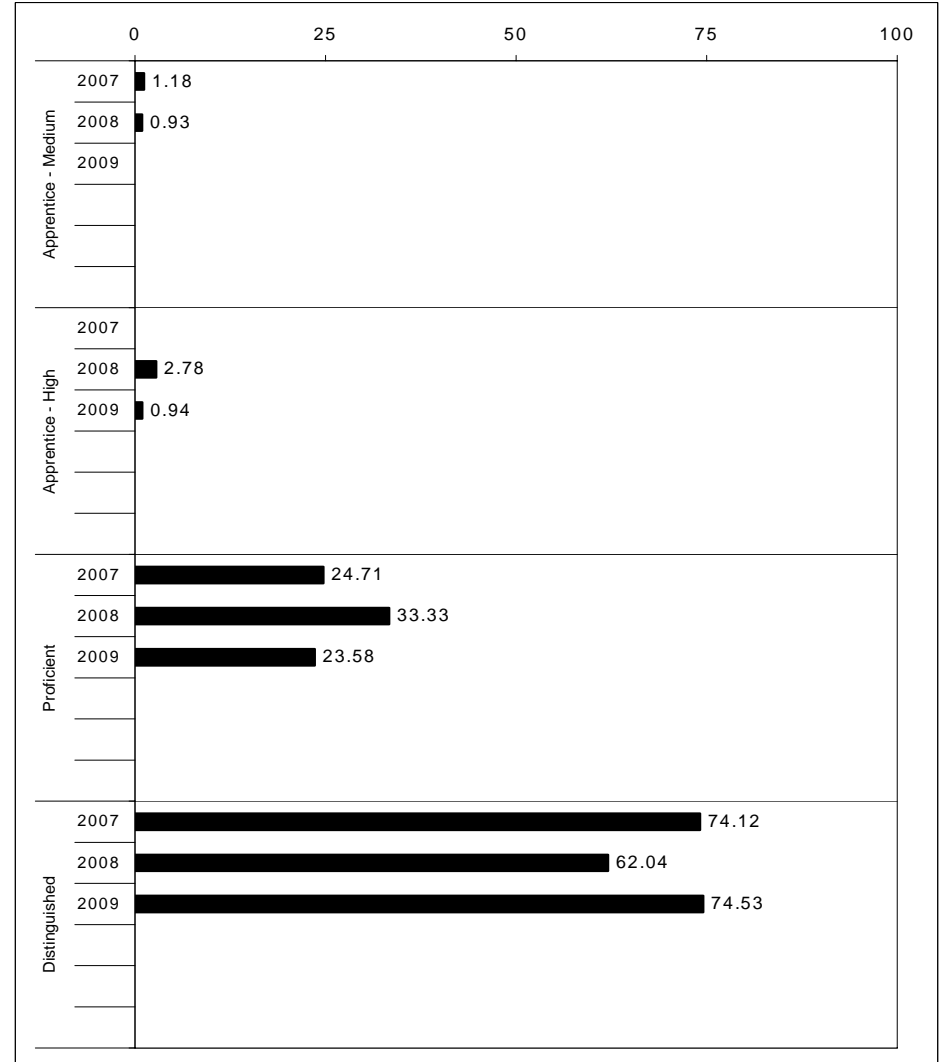
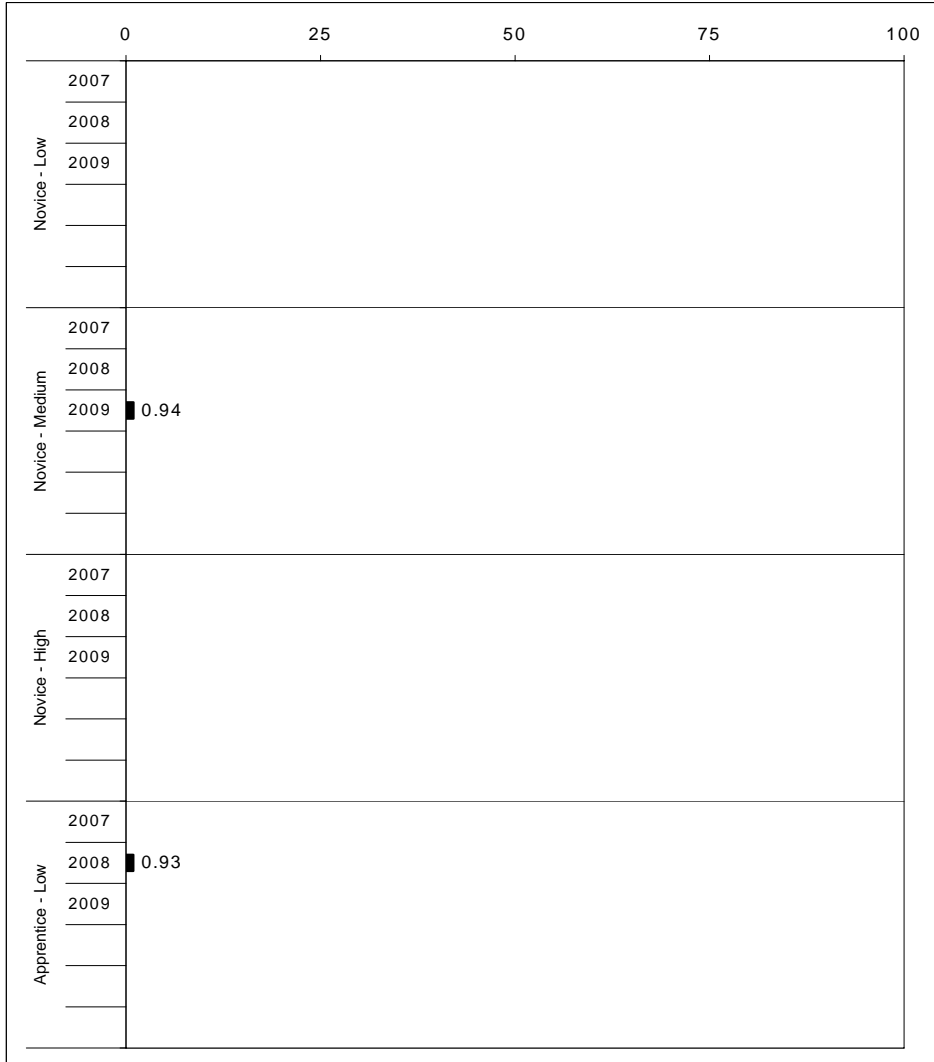
School: Veterans Park Elementary School
 District: Fayette County
 Code: 165012
 Grade: 04

	No. Items	No. Observations	SCHOOL								Std. Err.	No. Observations	STATE								School -State Mean
			B	0	1	2	3	4	Mean	B			0	1	2	3	4	Mean			
OPEN RESPONSE																					
1.x.x - Physical Science	2	35	0	0	3	49	23	26	2.7	0.2	16,337	0	17	19	42	17	5	1.7	1.0		
2.x.x - Earth Space Science	3	145	0	3	7	37	46	8	2.5	0.1	65,658	0	12	22	35	26	4	1.9	0.6		
3.x.x - Biological Science	3	144	0	0	3	18	45	33	3.1	0.1	65,506	0	2	11	33	44	9	2.5	0.6		
4.x.x - Unifying Concepts	2	127	0	0	2	24	39	36	3.1	0.1	57,508	0	3	13	33	35	15	2.5	0.6		
MULTIPLE CHOICE																					
			Correct	Incorrect	Omit/Mult							Correct	Incorrect	Omit/Mult							
1.x.x - Physical Science	18	864	90	10	0	0.90	0.01	393,336	82	18	0	0.81	0.09								
2.x.x - Earth Space Science	19	882	87	13	0	0.87	0.02	401,488	71	29	0	0.71	0.16								
3.x.x - Biological Science	22	1,027	91	9	0	0.91	0.01	467,138	78	22	0	0.78	0.13								
4.x.x - Unifying Concepts	14	701	93	7	0	0.93	0.01	319,534	84	15	0	0.84	0.09								



2008-2009
INTERIM PERFORMANCE REPORT
SOCIAL STUDIES TREND DATA
Performance Level Percents

School: Veterans Park Elementary School
 District: Fayette County
 Code: 165012
 Grade: 05



The horizontal bar represents the percent of students scoring at a performance level within a particular year. Percentages may not sum to 100% due to rounding.



2008-2009
INTERIM PERFORMANCE REPORT
SOCIAL STUDIES DISAGGREGATION
Performance Level Percents

School: Veterans Park Elementary School
 District: Fayette County
 Code: 165012
 Grade: 05

		0%	10%	20%	30%	40%	50%	60%	70%	80%	90%	100%	N%	A%	P%	D%	P+D%	
All Students	Tested												Tested Students					
	100 Days												Total	1	1	24	75	98.11
Female	Tested												Female	2	0	18	80	97.73
	100 Days												Male	0	2	27	71	98.39
Male	Tested												White (Non-Hispanic)	1	0	24	75	98.97
	100 Days												African-American	Unreportable*				
White (Non-Hispanic)	Tested												Hispanic	Unreportable*				
	100 Days												Asian	Unreportable*				
African-American	Tested												Other					
	100 Days												Title I					
Hispanic	Tested												Migrant					
	100 Days												Identified LEP					
Asian	Tested												Extended Sch Services	Unreportable*				
	100 Days												Gifted/Talented	0	0	3	97	100.00
Migrant	Tested												F/R Lunch Approved	Unreportable*				
	100 Days												Vocational/2 Credits					
Identified LEP	Tested												Disability	7	0	57	36	92.86
	100 Days												Alternate Assessment	Unreportable*				
Free/Reduced Lunch Approved	Tested												100 Day Students					
	100 Days												Total	1	1	24	75	98.11
Disability	Tested												Female	2	0	18	80	97.73
	100 Days												Male	0	2	27	71	98.39
													White (Non-Hispanic)	1	0	24	75	98.97
													African-American	Unreportable*				
													Hispanic	Unreportable*				
													Asian	Unreportable*				
													Other					
													Title I					
													Migrant					
													Identified LEP					
													Extended Sch Services	Unreportable*				
													Gifted/Talented	0	0	3	97	100.00
													F/R Lunch Approved	Unreportable*				
													Vocational/2 Credits					
													Disability	7	0	57	36	92.86
													Alternate Assessment	Unreportable*				

	Novice
	Apprentice
	Proficient
	Distinguished

Percentage may not sum to 100% due to rounding. 'Unreportable*' indicates subpopulations with fewer than 10 students or subpopulations where all students score at the same performance level.



2008-2009
INTERIM PERFORMANCE REPORT
SOCIAL STUDIES CORE CONTENT

School: Veterans Park Elementary School
 District: Fayette County
 Code: 165012
 Grade: 05

	No. Items	No. Observations	SCHOOL								Std. Err.	No. Observations	STATE								School -State Mean
			B	0	1	2	3	4	Mean	B			0	1	2	3	4	Mean			
OPEN RESPONSE																					
1.x.x - Government & Civics	2	122	0	1	11	42	31	16	2.5	0.1	56,903	0	5	37	45	10	2	1.7	0.8		
2.x.x - Cultures & Societies	1	18	0	0	6	28	17	50	3.1	0.2	8,151	0	4	21	56	15	4	1.9	1.2		
3.x.x - Economics	1	105	0	1	3	28	36	32	3.0	0.1	48,828	0	11	33	41	12	3	1.6	1.4		
4.x.x - Geography	2	35	0	0	14	40	26	20	2.5	0.2	16,077	0	9	32	39	17	3	1.7	0.8		
5.x.x - Historical Perspective	3	140	0	2	14	46	21	16	2.4	0.1	65,353	0	7	35	46	10	2	1.7	0.7		
MULTIPLE CHOICE																					
1.x.x - Government & Civics	14	683	Correct	Incorrect	Omit/Mult				0.84	0.02	317,571	Correct	Incorrect	Omit/Mult				0.66	0.18		
2.x.x - Cultures & Societies	11	454	84	16	0				0.91	0.02	211,383	66	34	0				0.69	0.22		
3.x.x - Economics	11	542	91	9	0				0.91	0.02	252,215	70	27	0				0.73	0.18		
4.x.x - Geography	16	807	88	12	0				0.88	0.02	374,337	73	27	0				0.66	0.22		
5.x.x - Historical Perspective	27	1,259	91	9	0				0.91	0.01	586,076	66	34	0				0.66	0.22		
			91	9	0				0.91	0.01	586,076	69	31	0				0.69	0.22		



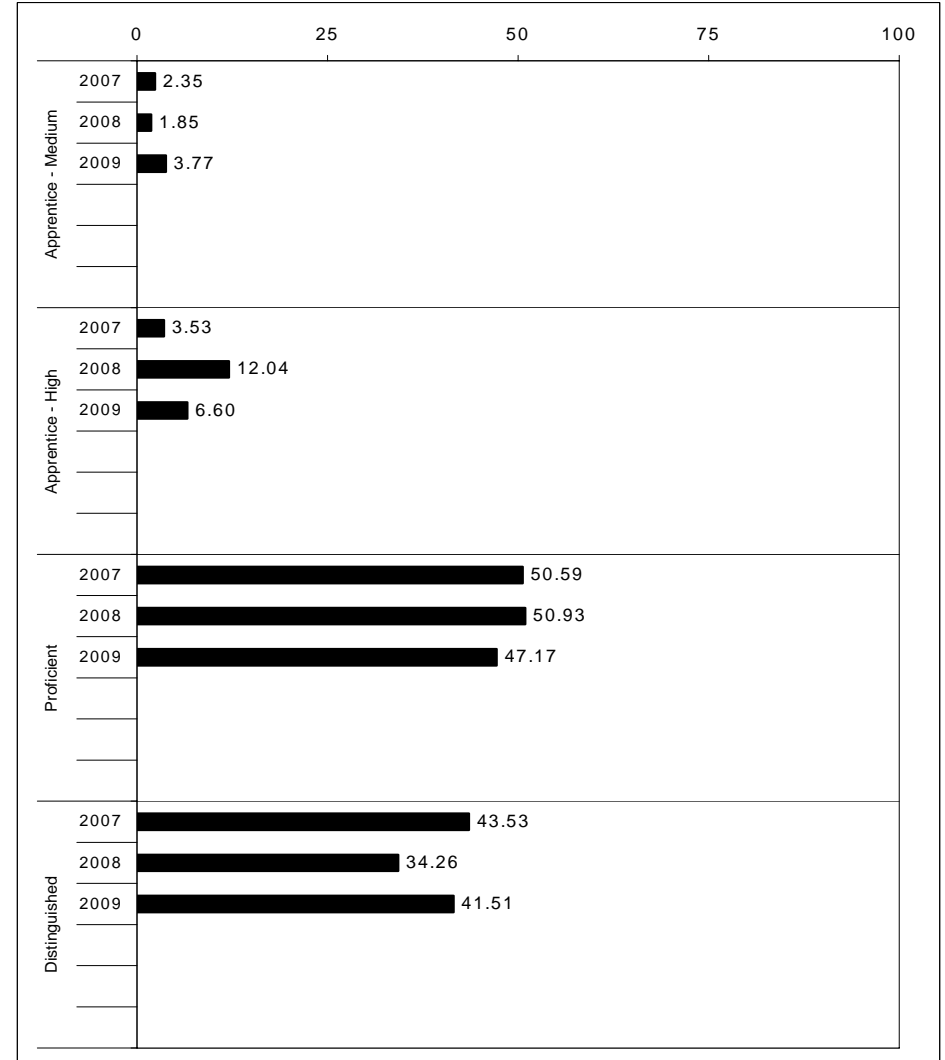
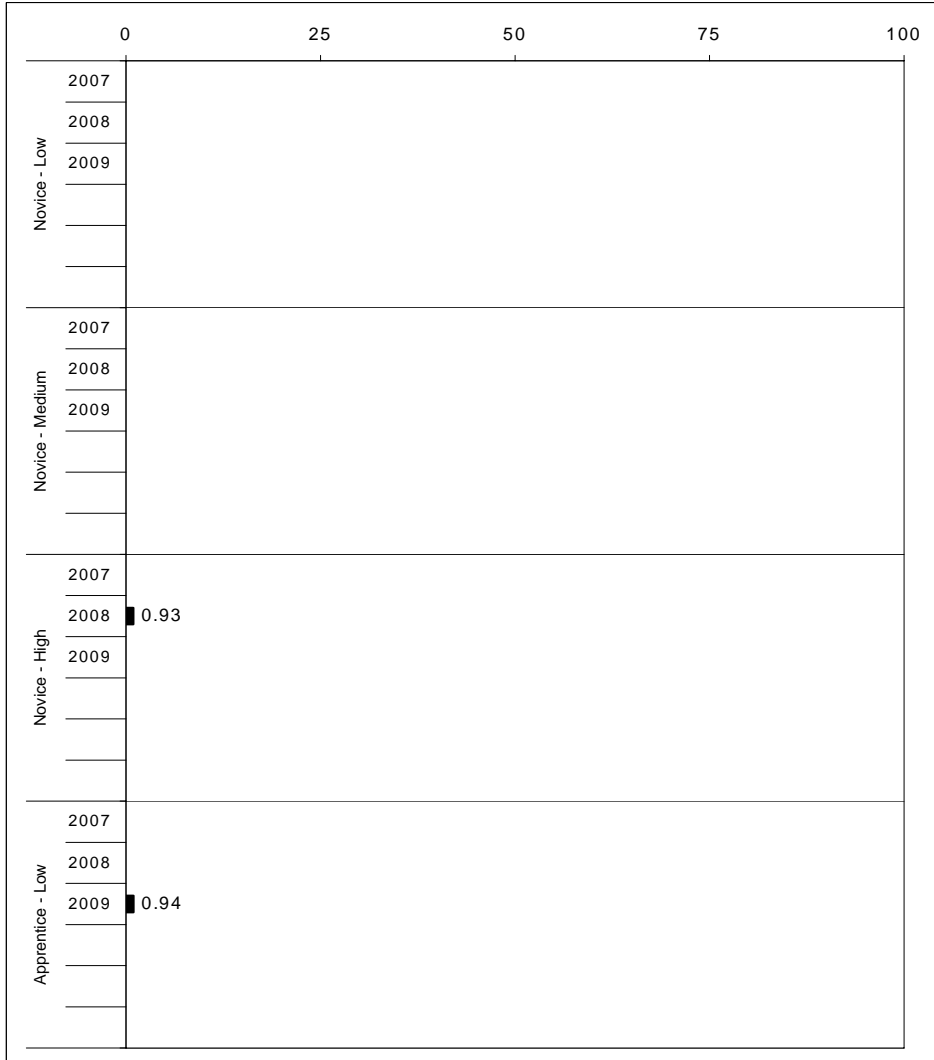
2008-2009
INTERIM PERFORMANCE REPORT
WRITING ON-DEMAND TREND DATA
Performance Level Percents

School: Veterans Park Elementary School

District: Fayette County

Code: 165012

Grade: 05



The horizontal bar represents the percent of students scoring at a performance level within a particular year. Percentages may not sum to 100% due to rounding.



2008-2009
INTERIM PERFORMANCE REPORT
WRITING ON-DEMAND DISAGGREGATION
Performance Level Percents

School: Veterans Park Elementary School
 District: Fayette County
 Code: 165012
 Grade: 05

		0%	10%	20%	30%	40%	50%	60%	70%	80%	90%	100%	N%	A%	P%	D%	P+D%	
All Students	Tested												Tested Students					
	100 Days												Total	0	11	47	42	88.68
Female	Tested												Female	0	14	34	52	86.36
	100 Days												Male	0	10	56	34	90.32
Male	Tested												White (Non-Hispanic)	0	11	47	41	88.66
	100 Days												African-American	Unreportable*				
White (Non-Hispanic)	Tested												Hispanic	Unreportable*				
	100 Days												Asian	Unreportable*				
African-American	Tested												Other					
	100 Days												Title I					
Hispanic	Tested												Migrant					
	100 Days												Identified LEP					
Asian	Tested												Extended Sch Services	Unreportable*				
	100 Days												Gifted/Talented	0	3	17	79	96.55
Migrant	Tested												F/R Lunch Approved	Unreportable*				
	100 Days												Vocational/2 Credits					
Identified LEP	Tested												Disability	0	29	50	21	71.43
	100 Days												Alternate Assessment	Unreportable*				
Free/Reduced Lunch Approved	Tested												100 Day Students					
	100 Days												Total	0	11	47	42	88.68
Disability	Tested												Female	0	14	34	52	86.36
	100 Days												Male	0	10	56	34	90.32

Novice
 Apprentice
 Proficient
 Distinguished

Percentage may not sum to 100% due to rounding. 'Unreportable*' indicates subpopulations with fewer than 10 students or subpopulations where all students score at the same performance level.



2008-2009
INTERIM PERFORMANCE REPORT
WRITING ON-DEMAND CORE CONTENT

School: Veterans Park Elementary School
 District: Fayette County
 Code: 165012
 Grade: 05

WRITING PROMPT	SCHOOL												STATE												School
	No. Observations	Percents											Mean	Percents											Mean
	B	0	1	2	3	4	5	6	7	8		B	0	1	2	3	4	5	6	7	8				
Inform																									
1.X.X - Content	34	0	0	0	0	0	12	15	53	18	3	5.85	0	1	1	9	9	34	18	21	4	2	4.43	1.42	
2.X.X - Structure	34	0	0	0	0	0	18	15	50	15	3	5.71	0	1	2	9	10	35	19	19	3	1	4.33	1.38	
3.X.X - Convention	34	0	0	0	0	0	15	21	44	18	3	5.74	0	0	0	12	11	34	19	19	3	1	4.38	1.36	
Narrate for a purpose																									
1.X.X - Content	36	0	0	0	6	3	11	25	31	11	14	5.61	0	1	1	10	9	36	18	21	3	1	4.35	1.26	
2.X.X - Structure	36	0	0	0	6	0	17	25	33	6	14	5.53	0	1	2	10	10	37	17	19	3	1	4.27	1.26	
3.X.X - Convention	36	0	0	0	6	0	14	25	36	6	14	5.58	0	0	0	12	10	36	18	19	3	1	4.33	1.25	
Persuade																									
1.X.X - Content	35	0	0	0	3	6	9	11	34	20	17	5.97	0	1	1	8	8	33	19	21	5	3	4.50	1.47	
2.X.X - Structure	35	0	0	0	3	9	11	9	37	20	11	5.74	0	2	2	9	10	33	19	20	5	2	4.42	1.32	
3.X.X - Convention	35	0	0	0	3	11	6	14	29	23	14	5.80	0	0	0	11	10	32	19	20	5	2	4.50	1.30	

MULTIPLE CHOICE	No. Items	SCHOOL						STATE						School
		No. Observations	Percents			Mean	Std. Err.	No. Observations	Percents			Mean	-State Mean	
		Correct	Incorrect	Omit/Mult				Correct	Incorrect	Omit/Mult				
4.x.x - Writing Process	52	1,260	88	13	0	0.87	0.01	585,936	73	27	0	0.73	0.14	
4.10.x - Revising	16	279	81	19	0	0.81	0.03	130,317	66	34	0	0.66	0.15	
4.11.x - Editing	36	981	89	11	0	0.89	0.01	455,619	75	24	0	0.75	0.14	