



Interim Performance Report

In March 2009, the Kentucky General Assembly passed Senate Bill 1 (SB1) that was subsequently signed into law by the Governor. SB1 calls for a significant overhaul of the state's assessment and accountability system. The new assessment system begins in the spring of 2012. The school years of 2008-2009, 2009-2010 and 2010-2011 are described in SB1 as an interim period. This three-year period allows Kentucky to develop the new assessment system and to carry on state and federal testing requirements.

The Interim Performance Report includes the Kentucky Core Content Test (KCCT) in Reading (grades 3-8 and 10), Mathematics (grades 3-8 and 11), Science (grades 4, 7 and 11), Social Studies (grades 5, 8 and 11) and Writing On-Demand (grades 5, 8 and 12). The KCCT is based on the Kentucky Core Content for Assessment (Version 4.1) and contains multiple choice and open response questions. The Writing On-Demand test uses writing prompts that require students to craft a piece of writing in a 60 minute period.

The KCCT is developed under the direction of content advisory committees of Kentucky educators who draft, review and select test questions. All test items are reviewed by a bias review committee to enhance the fairness of items for all Kentucky students.

The KCCT continues to fulfill the requirements of the federal statute known as the No Child Left Behind Act of 2001. A separate accountability report for No Child Left Behind (NCLB) is published by the Kentucky Department of Education.

The Interim Performance Report focuses entirely on the five state-required content areas and provides data for schools or districts. The data in this report is not used directly for state accountability; although, these results can fulfill the requirements of Senate Bill 168 from 2002 and may be used by schools or districts for their own local accountability needs.

Performance standards are based on descriptions of Novice, Apprentice, Proficient and Distinguished (NAPD) student performance levels specific to the content area and grade being assessed. The performance standards, in conjunction with Kentucky's Core Content for Assessment, should allow instruction to better focus on the content area to be taught and on how well students must demonstrate achievement in each content area.

Reporting Changes for 2009

Based on SB1, Kentucky will not be reporting state accountability and academic indices as in the past. The report does have several familiar pages with performance level (NAPD) trend, core content and disaggregation data per content area. Districts and schools will still see distributions of how students scored in the Novice (with sublevels), Apprentice (with sublevels), Proficient and Distinguished performance levels.

Confidentiality Changes

Due to federal regulations around the Family Education Rights and Privacy Act (FERPA), the numbers of students have been removed. Though there is a need to report as much data as possible, there is also a paramount need to maintain the confidential aspects of individual scores. When scores are reported in what is commonly called "small cells" where very few students may be categorized, there is the possibility of revealing individual scores when numbers are reported. Numbers are reported to each district in a confidential report that accompanies the public Interim Performance Report.

2008-2009

**INTERIM PERFORMANCE REPORT**

School: Stonewall Elementary School

District: Fayette County

Code: 165085

Grade: PRIMARY-05

**CONTENTS OF THIS REPORT**

Introduction	1
Academic Trend Data	
Reading Results	2-8
Mathematics Results	9-15
Science Results	16-18
Social Studies Results	19-21
Writing Results	22-24

For more information, refer to the 2009 Interim Assessment Interpretative Guide on the Kentucky Department of Education Web site ([www.education.ky.gov](http://www.education.ky.gov)).





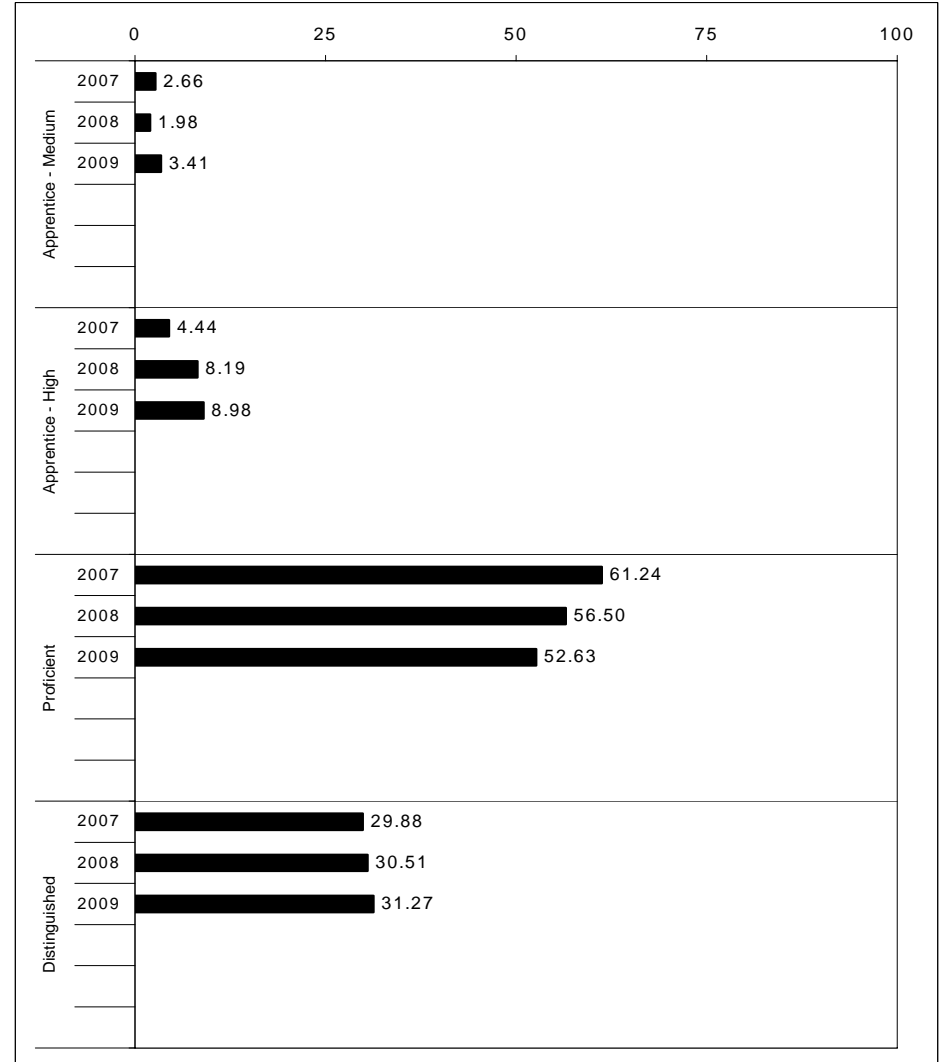
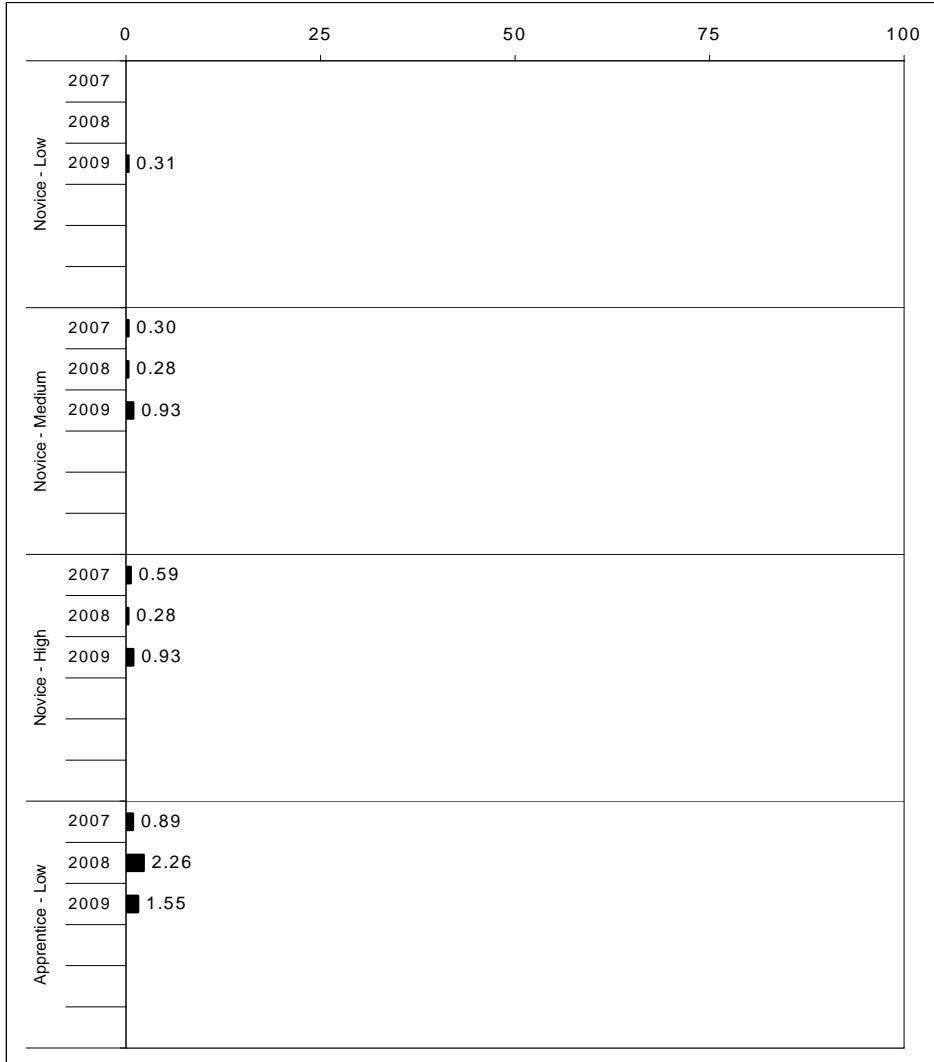
2008-2009  
**INTERIM PERFORMANCE REPORT**  
**READING TREND DATA**  
**Performance Level Percents**

School: Stonewall Elementary School

District: Fayette County

Code: 165085

Grade: ELEMENTARY



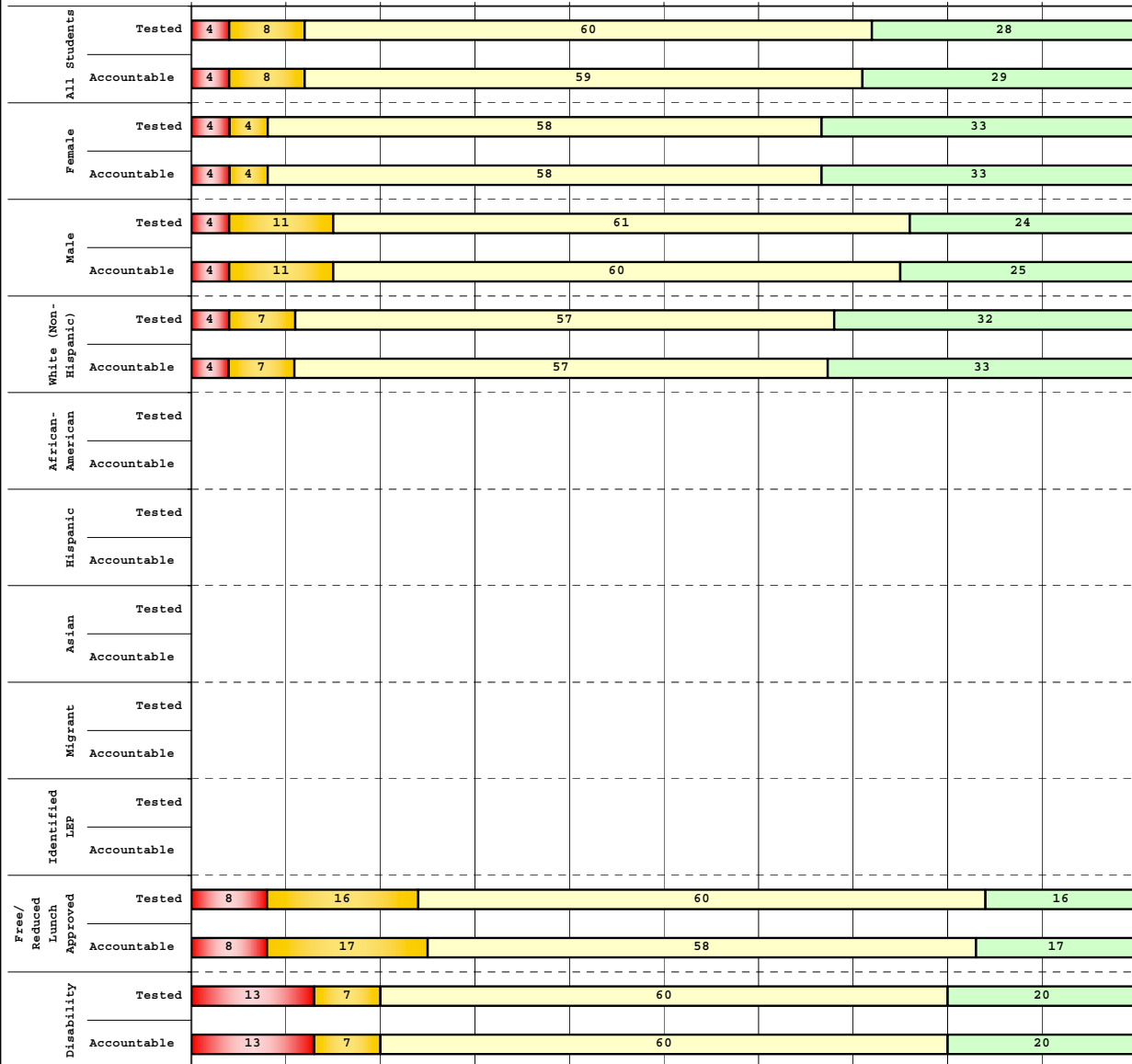
The horizontal bar represents the percent of students scoring at a performance level within a particular year. Percentages may not sum to 100% due to rounding.



**2008-2009  
INTERIM PERFORMANCE REPORT  
READING DISAGGREGATION  
Performance Level Percents**

School: Stonewall Elementary School  
 District: Fayette County  
 Code: 165085  
 Grade: 03

0% 10% 20% 30% 40% 50% 60% 70% 80% 90% 100%



**Tested Students**

	N%	A%	P%	D%	P+D%
Total	4	8	60	28	88.24
Female	4	4	58	33	91.67
Male	4	11	61	24	85.19
White (Non-Hispanic)	4	7	57	32	89.29
African-American	Unreportable*				
Hispanic	Unreportable*				
Asian	Unreportable*				
Other	Unreportable*				
Title I					
Migrant	Unreportable*				
Identified LEP	Unreportable*				
Extended Sch Services					
Gifted/Talented	0	0	41	59	100.00
F/R Lunch Approved	8	16	60	16	76.00
Vocational/2 Credits					
Disability	13	7	60	20	80.00
Alternate Assessment					

**NCLB Accountable Students**

	N%	A%	P%	D%	P+D%
Total	4	8	59	29	88.12
Female	4	4	58	33	91.67
Male	4	11	60	25	84.91
White (Non-Hispanic)	4	7	57	33	89.16
African-American	Unreportable*				
Hispanic	Unreportable*				
Asian	Unreportable*				
Other	Unreportable*				
Title I					
Migrant	Unreportable*				
Identified LEP	Unreportable*				
Extended Sch Services					
Gifted/Talented	0	0	41	59	100.00
F/R Lunch Approved	8	17	58	17	75.00
Vocational/2 Credits					
Disability	13	7	60	20	80.00
Alternate Assessment					

<span style="color: red;">■</span>	Novice
<span style="color: orange;">■</span>	Apprentice
<span style="color: yellow;">■</span>	Proficient
<span style="color: green;">■</span>	Distinguished

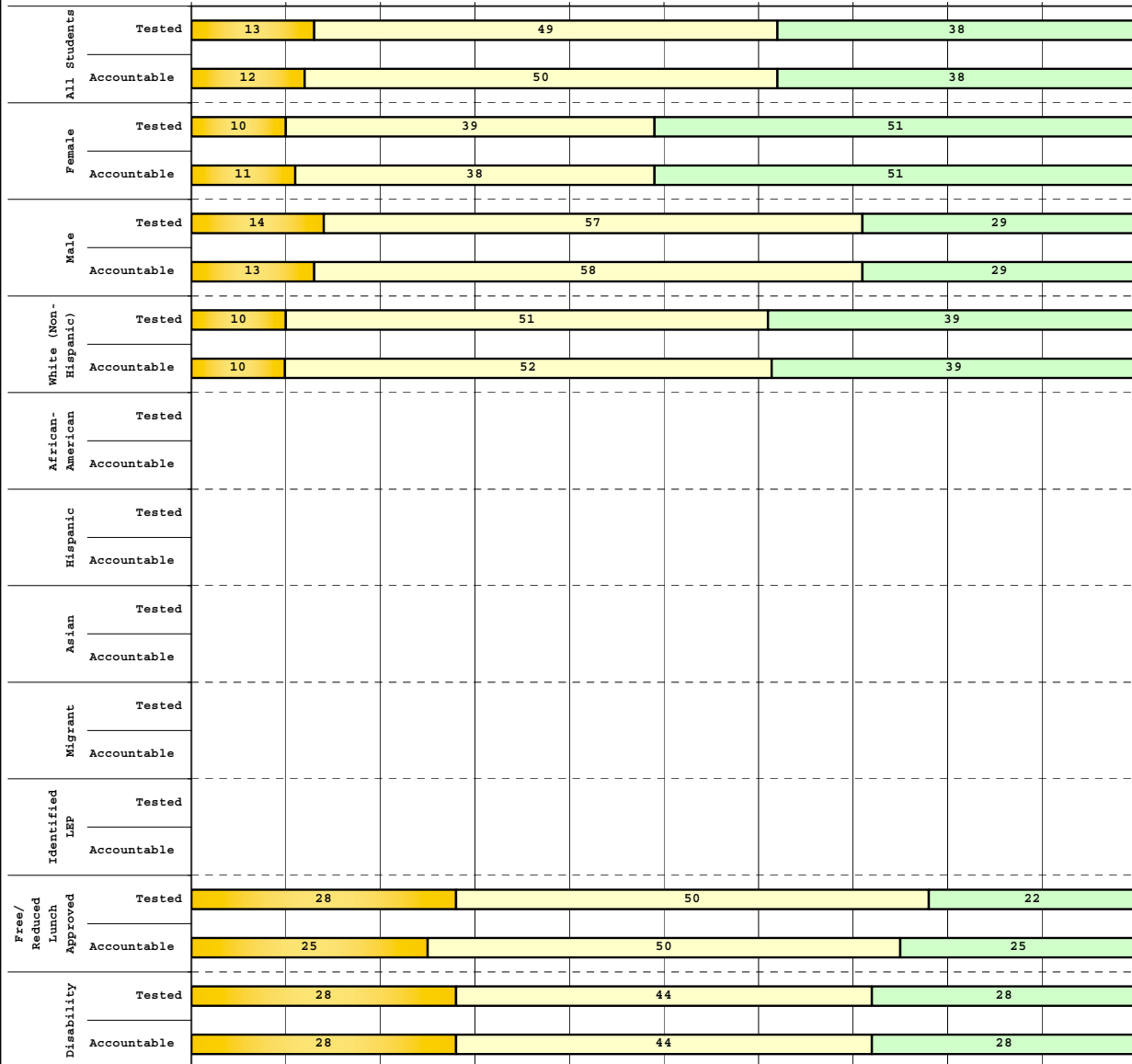
Percentage may not sum to 100% due to rounding. 'Unreportable\*' indicates subpopulations with fewer than 10 students or subpopulations where all students score at the same performance level.



2008-2009  
**INTERIM PERFORMANCE REPORT**  
**READING DISAGGREGATION**  
**Performance Level Percents**

School: Stonewall Elementary School  
 District: Fayette County  
 Code: 165085  
 Grade: 04

0% 10% 20% 30% 40% 50% 60% 70% 80% 90% 100%



	N%	A%	P%	D%	P+D%
<b>Tested Students</b>					
Total	0	13	49	38	87.50
Female	0	10	39	51	89.80
Male	0	14	57	29	85.71
White (Non-Hispanic)	0	10	51	39	89.80
African-American	Unreportable*				
Hispanic	Unreportable*				
Asian	Unreportable*				
Other	Unreportable*				
Title I					
Migrant					
Identified LEP	Unreportable*				
Extended Sch Services	0	11	63	26	88.89
Gifted/Talented	0	0	28	72	100.00
F/R Lunch Approved	0	28	50	22	72.22
Vocational/2 Credits					
Disability	0	28	44	28	72.22
Alternate Assessment					
<b>NCLB Accountable Students</b>					
Total	0	12	50	38	87.85
Female	0	11	38	51	88.89
Male	0	13	58	29	87.10
White (Non-Hispanic)	0	10	52	39	90.32
African-American	Unreportable*				
Hispanic	Unreportable*				
Asian	Unreportable*				
Other	Unreportable*				
Title I					
Migrant					
Identified LEP	Unreportable*				
Extended Sch Services	0	11	63	26	88.89
Gifted/Talented	0	0	28	72	100.00
F/R Lunch Approved	0	25	50	25	75.00
Vocational/2 Credits					
Disability	0	28	44	28	72.22
Alternate Assessment					

■ Novice
■ Apprentice
■ Proficient
■ Distinguished

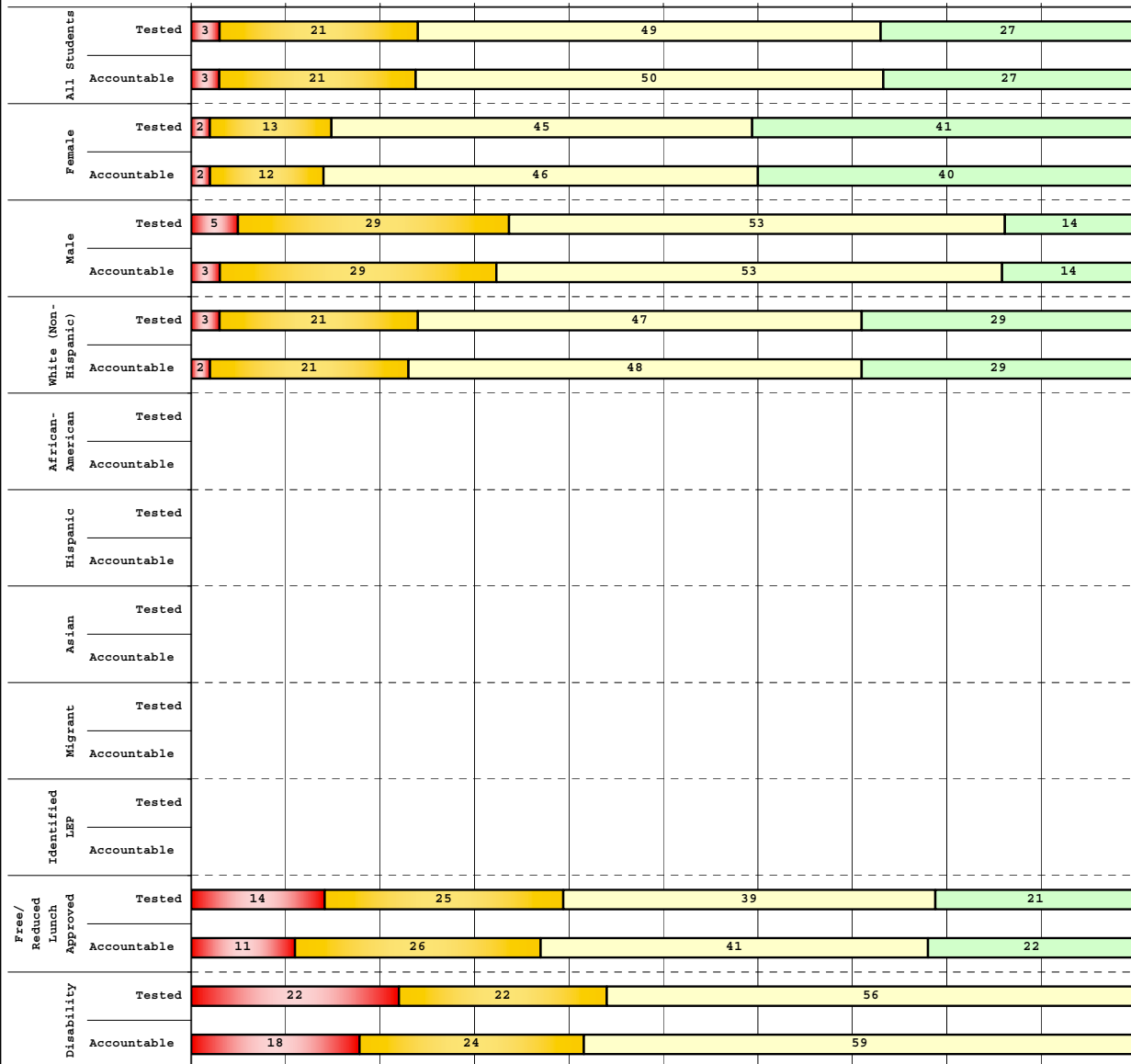
Percentage may not sum to 100% due to rounding. 'Unreportable\*' indicates subpopulations with fewer than 10 students or subpopulations where all students score at the same performance level.



2008-2009  
**INTERIM PERFORMANCE REPORT**  
**READING DISAGGREGATION**  
**Performance Level Percents**

School: Stonewall Elementary School  
 District: Fayette County  
 Code: 165085  
 Grade: 05

0% 10% 20% 30% 40% 50% 60% 70% 80% 90% 100%



**Tested Students**

	N%	A%	P%	D%	P+D%
Total	3	21	49	27	75.65
Female	2	13	45	41	85.71
Male	5	29	53	14	66.10
White (Non-Hispanic)	3	21	47	29	76.00
African-American	Unreportable*				
Hispanic	Unreportable*				
Asian	Unreportable*				
Other	Unreportable*				
Title I					
Migrant	Unreportable*				
Identified LEP	Unreportable*				
Extended Sch Services					
Gifted/Talented	0	0	65	35	100.00
F/R Lunch Approved	14	25	39	21	60.71
Vocational/2 Credits					
Disability	22	22	56	0	55.56
Alternate Assessment					

**NCLB Accountable Students**

	N%	A%	P%	D%	P+D%
Total	3	21	50	27	76.52
Female	2	12	46	40	85.96
Male	3	29	53	14	67.24
White (Non-Hispanic)	2	21	48	29	77.00
African-American	Unreportable*				
Hispanic	Unreportable*				
Asian	Unreportable*				
Other	Unreportable*				
Title I					
Migrant	Unreportable*				
Identified LEP	Unreportable*				
Extended Sch Services					
Gifted/Talented	0	0	65	35	100.00
F/R Lunch Approved	11	26	41	22	62.96
Vocational/2 Credits					
Disability	18	24	59	0	58.82
Alternate Assessment					

■ Novice  
■ Apprentice  
■ Proficient  
■ Distinguished

Percentage may not sum to 100% due to rounding. 'Unreportable\*' indicates subpopulations with fewer than 10 students or subpopulations where all students score at the same performance level.



**2008-2009**  
**INTERIM PERFORMANCE REPORT**  
**READING CORE CONTENT**

School: Stonewall Elementary School  
 District: Fayette County  
 Code: 165085  
 Grade: 03

	No. Items	No. Observations	SCHOOL							Mean	Std. Err.	No. Observations	STATE							Mean	School -State Mean
			B	0	1	2	3	4	B				0	1	2	3	4				
<b>OPEN RESPONSE</b>																					
2.0.x - Developing Understanding	2	200	0	4	28	50	16	4	1.9	0.1	100,212	0	10	30	44	14	2	1.7	0.2		
3.0.x - Interpreting Text	2	200	0	4	28	50	16	4	1.9	0.1	100,212	0	10	30	44	14	2	1.7	0.2		
<b>MULTIPLE CHOICE</b>																					
1.0.x - Forming a Foundation	32	783	90	10	0				0.90	0.01	392,589	83	17	0				0.83	0.07		
2.0.x - Developing Understanding	89	1,982	85	15	0				0.85	0.01	993,477	80	20	0				0.80	0.05		
3.0.x - Interpreting Text	31	942	85	15	0				0.85	0.01	468,115	77	23	0				0.77	0.08		
5.0.x - Critical Stance	15	408	87	13	0				0.87	0.02	208,359	79	21	0				0.79	0.08		



**2008-2009**  
**INTERIM PERFORMANCE REPORT**  
**READING CORE CONTENT**

School: Stonewall Elementary School  
 District: Fayette County  
 Code: 165085  
 Grade: 04

	No. Items	No. Observations	SCHOOL							Mean	Std. Err.	No. Observations	STATE							Mean	School -State Mean
			B	0	1	2	3	4	Percents				B	0	1	2	3	4	Percents		
<b>OPEN RESPONSE</b>																					
2.0.x - Developing Understanding	5	179	0	1	9	49	34	7	2.4	0.1	81,849	0	3	24	52	18	3	1.9	0.5		
3.0.x - Interpreting Text	6	282	0	1	9	41	37	12	2.5	0.1	131,199	0	4	22	45	23	5	2.0	0.5		
<b>MULTIPLE CHOICE</b>																					
1.0.x - Forming a Foundation	34	867	78	22	0				0.78	0.02	401,452	72	28	0				0.71	0.07		
2.0.x - Developing Understanding	76	1,907	79	21	0				0.79	0.01	868,422	73	27	0				0.73	0.06		
3.0.x - Interpreting Text	29	605	85	15	0				0.85	0.02	278,648	79	21	0				0.79	0.06		
5.0.x - Critical Stance	9	339	81	19	0				0.81	0.02	155,704	74	26	0				0.74	0.07		



**2008-2009  
INTERIM PERFORMANCE REPORT  
READING CORE CONTENT**

School: Stonewall Elementary School  
 District: Fayette County  
 Code: 165085  
 Grade: 05

	No. Items	No. Observations	SCHOOL							Mean	Std. Err.	No. Observations	STATE							Mean	School -State Mean
			B	0	1	2	3	4	B				0	1	2	3	4				
<b>OPEN RESPONSE</b>																					
2.0.x - Developing Understanding	6	211	0	2	20	48	26	5	2.1	0.1	89,507	0	5	23	48	20	5	2.0	0.1		
3.0.x - Interpreting Text	6	307	0	3	19	48	25	6	2.1	0.1	130,403	0	5	21	50	19	4	2.0	0.1		
<b>MULTIPLE CHOICE</b>																					
1.0.x - Forming a Foundation	28	634	76	24	0				0.76	0.02	268,187	74	26	0				0.74	0.02		
2.0.x - Developing Understanding	71	1,933	83	17	0				0.83	0.01	823,068	80	20	0				0.80	0.03		
3.0.x - Interpreting Text	27	806	82	18	0				0.82	0.01	341,653	81	19	0				0.81	0.01		
5.0.x - Critical Stance	17	709	82	18	0				0.82	0.02	300,671	75	25	0				0.75	0.07		



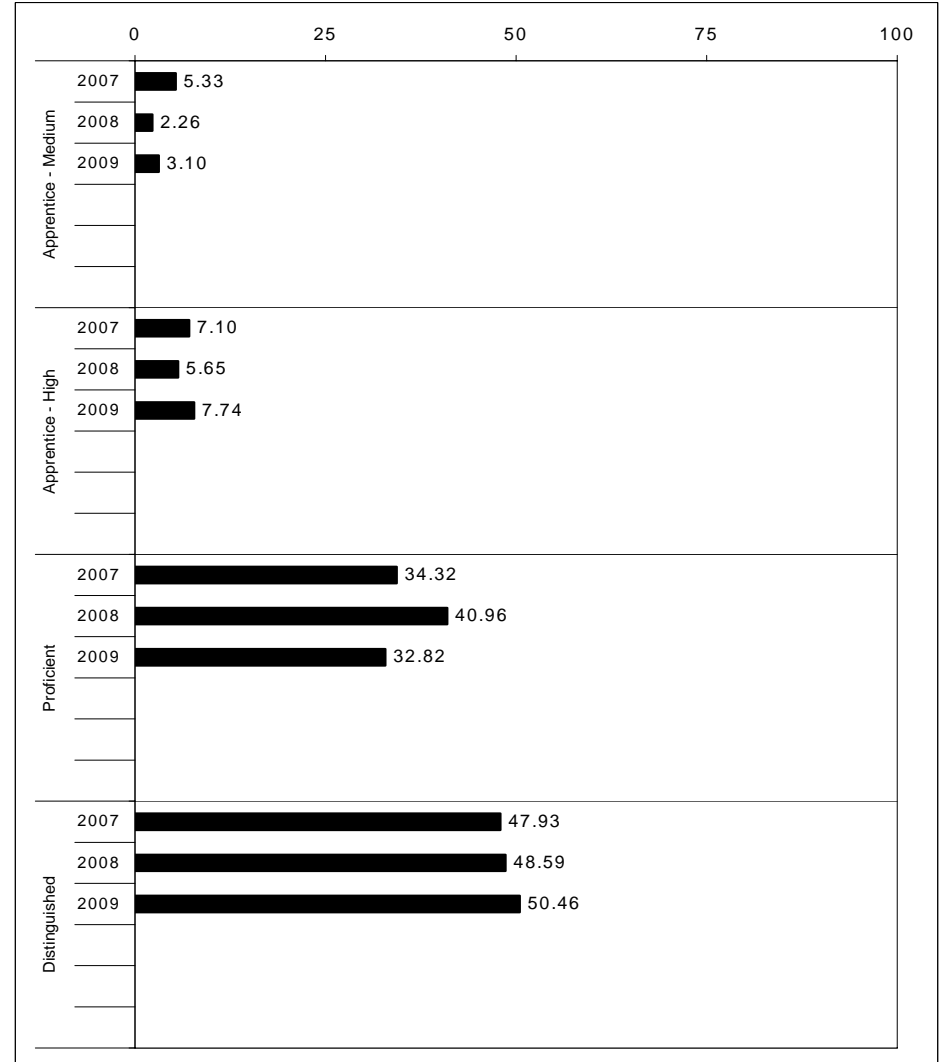
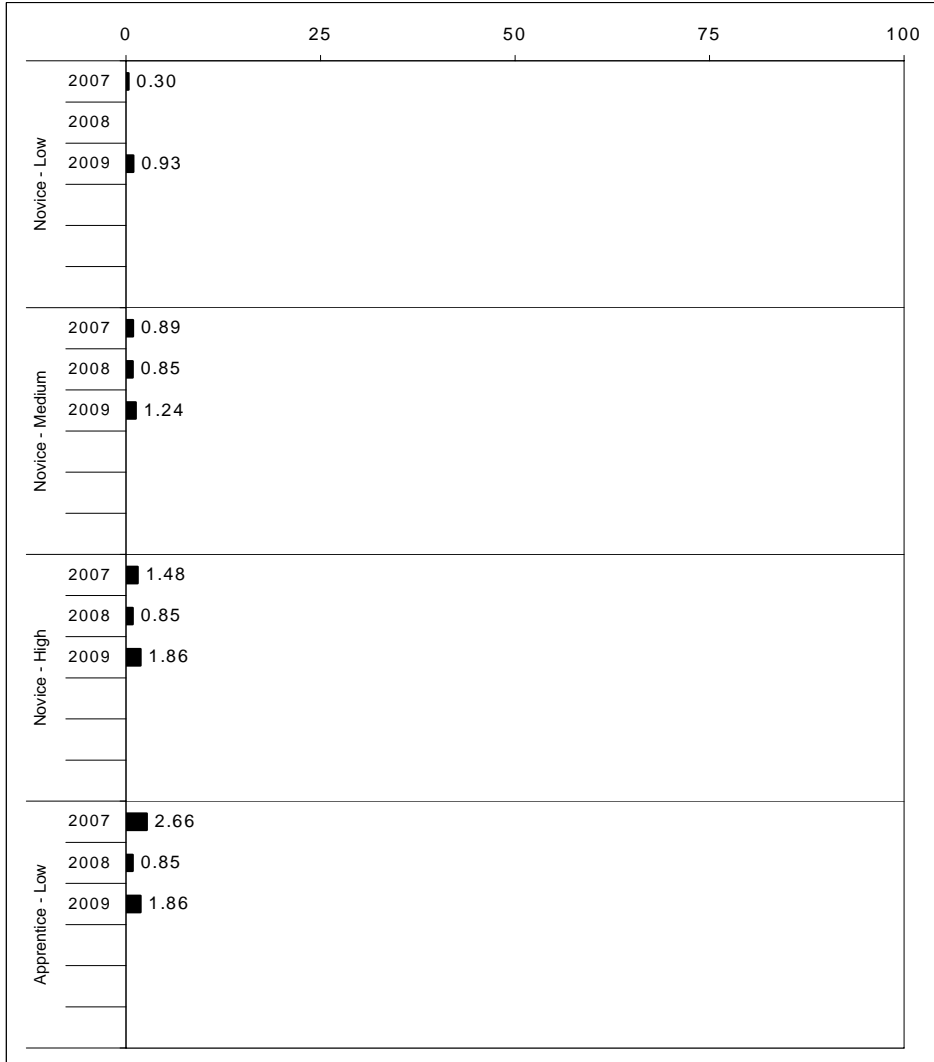
2008-2009  
**INTERIM PERFORMANCE REPORT**  
**MATHEMATICS TREND DATA**  
**Performance Level Percents**

School: Stonewall Elementary School

District: Fayette County

Code: 165085

Grade: ELEMENTARY



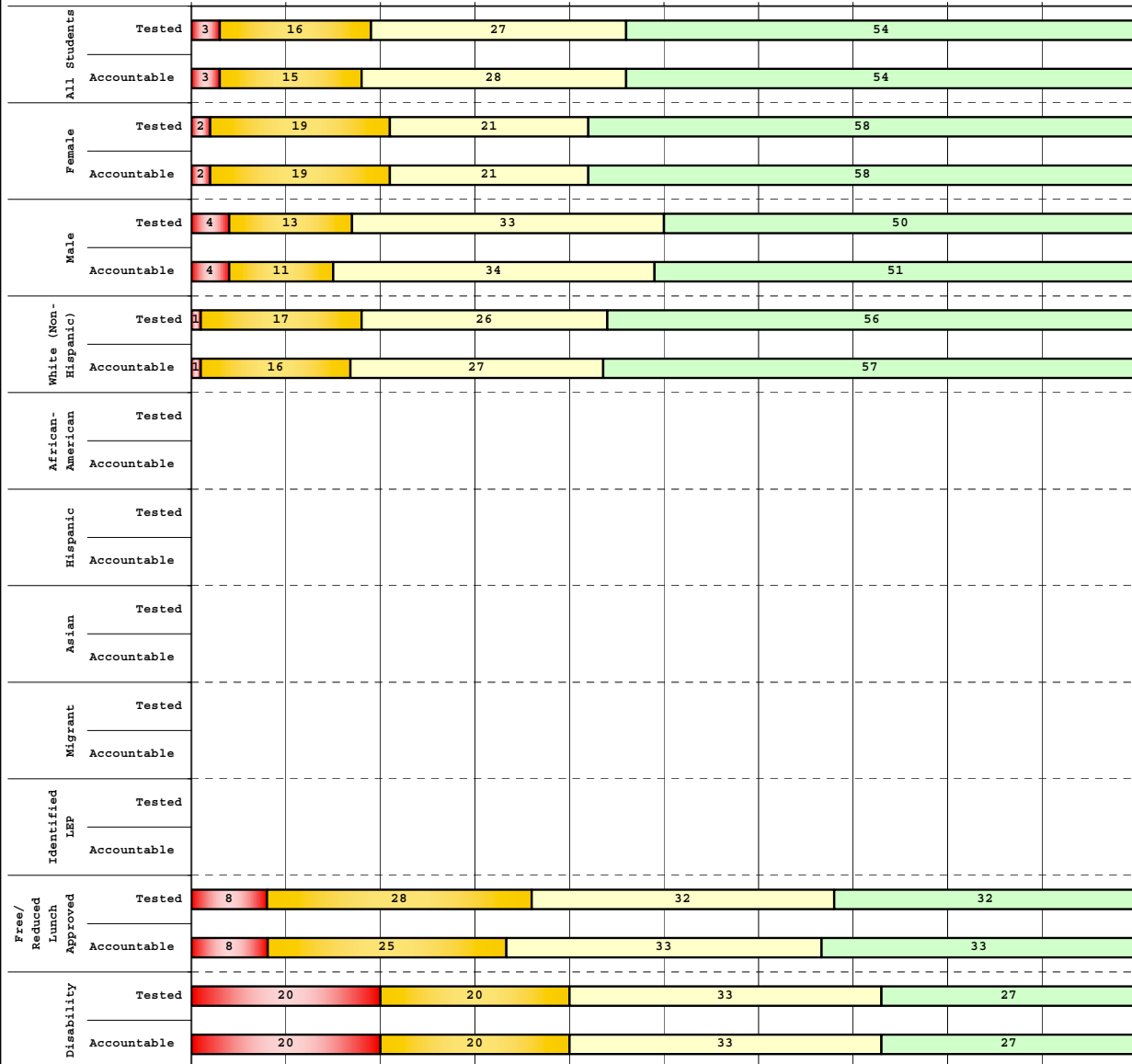
The horizontal bar represents the percent of students scoring at a performance level within a particular year. Percentages may not sum to 100% due to rounding.



**2008-2009  
INTERIM PERFORMANCE REPORT  
MATHEMATICS DISAGGREGATION  
Performance Level Percents**

School: Stonewall Elementary School  
District: Fayette County  
Code: 165085  
Grade: 03

0% 10% 20% 30% 40% 50% 60% 70% 80% 90% 100%



**Tested Students**

	N%	A%	P%	D%	P+D%
Total	3	16	27	54	81.37
Female	2	19	21	58	79.17
Male	4	13	33	50	83.33
White (Non-Hispanic)	1	17	26	56	82.14
African-American	Unreportable*				
Hispanic	Unreportable*				
Asian	Unreportable*				
Other	Unreportable*				
Title I					
Migrant	Unreportable*				
Identified LEP	Unreportable*				
Extended Sch Services					
Gifted/Talented	0	0	5	95	100.00
F/R Lunch Approved	8	28	32	32	64.00
Vocational/2 Credits					
Disability	20	20	33	27	60.00
Alternate Assessment					

**NCLB Accountable Students**

	N%	A%	P%	D%	P+D%
Total	3	15	28	54	82.18
Female	2	19	21	58	79.17
Male	4	11	34	51	84.91
White (Non-Hispanic)	1	16	27	57	83.13
African-American	Unreportable*				
Hispanic	Unreportable*				
Asian	Unreportable*				
Other	Unreportable*				
Title I					
Migrant	Unreportable*				
Identified LEP	Unreportable*				
Extended Sch Services					
Gifted/Talented	0	0	5	95	100.00
F/R Lunch Approved	8	25	33	33	66.67
Vocational/2 Credits					
Disability	20	20	33	27	60.00
Alternate Assessment					

<span style="color:red">■</span> Novice
<span style="color:orange">■</span> Apprentice
<span style="color:green">■</span> Proficient
<span style="color:lightgreen">■</span> Distinguished

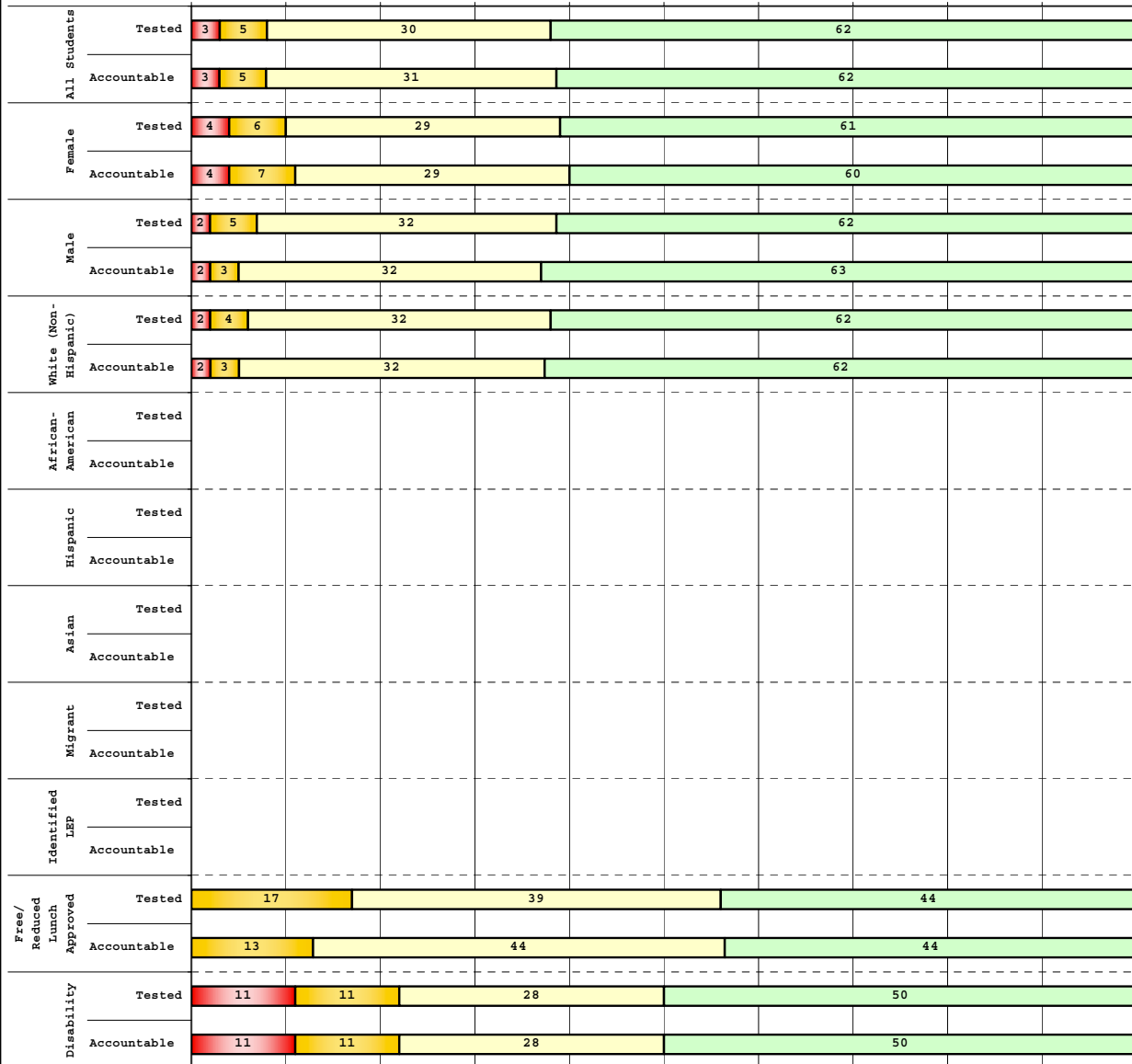
Percentage may not sum to 100% due to rounding. 'Unreportable\*' indicates subpopulations with fewer than 10 students or subpopulations where all students score at the same performance level.



**2008-2009  
INTERIM PERFORMANCE REPORT  
MATHEMATICS DISAGGREGATION  
Performance Level Percents**

School: Stonewall Elementary School  
District: Fayette County  
Code: 165085  
Grade: 04

0% 10% 20% 30% 40% 50% 60% 70% 80% 90% 100%



**Tested Students**

	N%	A%	P%	D%	P+D%
Total	3	5	30	62	91.96
Female	4	6	29	61	89.80
Male	2	5	32	62	93.65
White (Non-Hispanic)	2	4	32	62	93.88
African-American	Unreportable*				
Hispanic	Unreportable*				
Asian	Unreportable*				
Other	Unreportable*				
Title I					
Migrant					
Identified LEP	Unreportable*				
Extended Sch Services	0	4	41	56	96.30
Gifted/Talented	0	0	6	94	100.00
F/R Lunch Approved	0	17	39	44	83.33
Vocational/2 Credits					
Disability	11	11	28	50	77.78
Alternate Assessment					

**NCLB Accountable Students**

	N%	A%	P%	D%	P+D%
Total	3	5	31	62	92.52
Female	4	7	29	60	88.89
Male	2	3	32	63	95.16
White (Non-Hispanic)	2	3	32	62	94.62
African-American	Unreportable*				
Hispanic	Unreportable*				
Asian	Unreportable*				
Other	Unreportable*				
Title I					
Migrant					
Identified LEP	Unreportable*				
Extended Sch Services	0	4	41	56	96.30
Gifted/Talented	0	0	6	94	100.00
F/R Lunch Approved	0	13	44	44	87.50
Vocational/2 Credits					
Disability	11	11	28	50	77.78
Alternate Assessment					

<span style="color:red">■</span> Novice
<span style="color:orange">■</span> Apprentice
<span style="color:yellow">■</span> Proficient
<span style="color:green">■</span> Distinguished

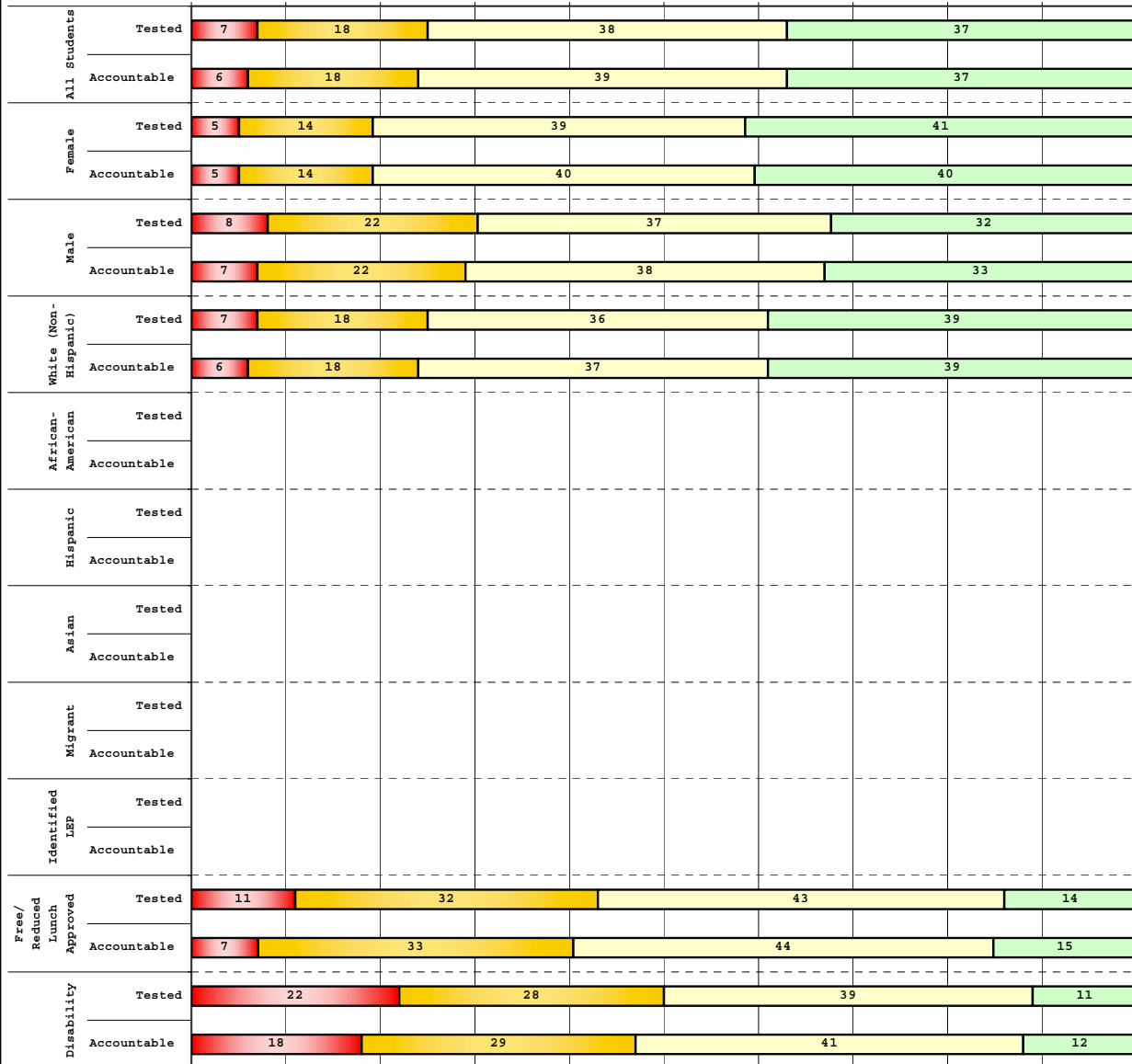
Percentage may not sum to 100% due to rounding. 'Unreportable\*' indicates subpopulations with fewer than 10 students or subpopulations where all students score at the same performance level.



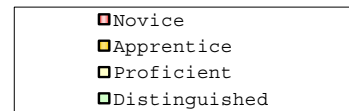
2008-2009  
**INTERIM PERFORMANCE REPORT**  
**MATHEMATICS DISAGGREGATION**  
**Performance Level Percents**

School: Stonewall Elementary School  
 District: Fayette County  
 Code: 165085  
 Grade: 05

0% 10% 20% 30% 40% 50% 60% 70% 80% 90% 100%



	N%	A%	P%	D%	P+D%
<b>Tested Students</b>					
Total	7	18	38	37	74.78
Female	5	14	39	41	80.36
Male	8	22	37	32	69.49
White (Non-Hispanic)	7	18	36	39	75.00
African-American	Unreportable*				
Hispanic	Unreportable*				
Asian	Unreportable*				
Other	Unreportable*				
Title I					
Migrant	Unreportable*				
Identified LEP	Unreportable*				
Extended Sch Services					
Gifted/Talented	0	5	10	85	95.00
F/R Lunch Approved	11	32	43	14	57.14
Vocational/2 Credits					
Disability	22	28	39	11	50.00
Alternate Assessment					
<b>NCLB Accountable Students</b>					
Total	6	18	39	37	75.65
Female	5	14	40	40	80.70
Male	7	22	38	33	70.69
White (Non-Hispanic)	6	18	37	39	76.00
African-American	Unreportable*				
Hispanic	Unreportable*				
Asian	Unreportable*				
Other	Unreportable*				
Title I					
Migrant	Unreportable*				
Identified LEP	Unreportable*				
Extended Sch Services					
Gifted/Talented	0	5	10	85	95.00
F/R Lunch Approved	7	33	44	15	59.26
Vocational/2 Credits					
Disability	18	29	41	12	52.94
Alternate Assessment					



Percentage may not sum to 100% due to rounding. 'Unreportable\*' indicates subpopulations with fewer than 10 students or subpopulations where all students score at the same performance level.



**2008-2009**  
**INTERIM PERFORMANCE REPORT**  
**MATHEMATICS CORE CONTENT**

School: Stonewall Elementary School  
 District: Fayette County  
 Code: 165085  
 Grade: 03

	No. Items	No. Observations	SCHOOL							Mean	Std. Err.	No. Observations	STATE							Mean	School -State Mean
			B	0	1	2	3	4	B				0	1	2	3	4				
<b>OPEN RESPONSE</b>																					
1.x.x - Number Prop Oper	5	249	0	11	28	33	14	14	1.9	0.1	125,243	0	21	35	26	10	8	1.5	0.4		
2.x.x - Measurement	1	16	0	0	0	19	19	63	3.4	0.4	8,325	0	25	5	30	14	25	2.1	1.3		
3.x.x - Geometry	2	35	0	0	20	37	31	11	2.3	0.2	16,777	0	8	24	35	13	20	2.1	0.2		
4.x.x - Data Analysis & Probabilit	1	100	0	2	10	22	20	46	3.0	0.1	50,106	0	9	13	19	27	32	2.6	0.4		
5.x.x - Algebraic Thinking	2	116	0	3	9	22	23	42	2.9	0.1	58,404	0	9	14	19	28	31	2.6	0.3		
<b>MULTIPLE CHOICE</b>																					
1.x.x - Number Prop Oper	32	1,617	81	19	0				0.81	0.01	810,106	74	26	0				0.74	0.07		
2.x.x - Measurement	7	365	83	17	0				0.83	0.02	183,647	81	18	0				0.81	0.02		
3.x.x - Geometry	18	800	90	10	0				0.90	0.01	400,848	85	15	0				0.85	0.05		
4.x.x - Data Analysis & Probabilit	8	384	77	23	0				0.77	0.02	192,126	69	31	0				0.69	0.08		
5.x.x - Algebraic Thinking	11	434	83	17	0				0.83	0.02	217,089	78	22	0				0.78	0.05		



**2008-2009**  
**INTERIM PERFORMANCE REPORT**  
**MATHEMATICS CORE CONTENT**

School: Stonewall Elementary School  
 District: Fayette County  
 Code: 165085  
 Grade: 04

	No. Items	No. Observations	SCHOOL								Std. Err.	No. Observations	STATE						School -State Mean
			Percents						Mean	Percents									
			B	0	1	2	3	4					B	0	1	2	3	4	
<b>OPEN RESPONSE</b>																			
1.x.x - Number Prop Oper	4	166	1	7	19	24	23	27	2.4	0.1	73,656	0	17	24	29	19	12	1.9	0.5
2.x.x - Measurement	1	19	0	11	5	16	32	37	2.8	0.3	8,195	0	43	13	10	20	13	1.5	1.3
3.x.x - Geometry	2	121	0	2	7	15	27	49	3.1	0.1	57,352	0	11	20	17	19	33	2.4	0.7
4.x.x - Data Analysis & Probabilit	1	19	0	5	5	42	37	11	2.4	0.2	8,152	0	5	36	29	23	6	1.9	0.5
5.x.x - Algebraic Thinking	2	122	1	2	20	25	39	14	2.4	0.1	57,508	0	5	27	32	25	11	2.1	0.3
<b>MULTIPLE CHOICE</b>																			
1.x.x - Number Prop Oper	31	1,436	78	22	Omit/Mult			0	0.78	0.01	664,194	67	33	Omit/Mult			0	0.67	0.11
2.x.x - Measurement	7	311	78	22	Omit/Mult			0	0.77	0.03	139,170	62	38	Omit/Mult			0	0.62	0.15
3.x.x - Geometry	14	608	84	16	Omit/Mult			0	0.84	0.02	278,460	77	23	Omit/Mult			0	0.77	0.07
4.x.x - Data Analysis & Probabilit	12	656	82	18	Omit/Mult			0	0.82	0.02	303,394	71	29	Omit/Mult			0	0.71	0.11
5.x.x - Algebraic Thinking	11	554	80	20	Omit/Mult			0	0.80	0.02	253,829	69	31	Omit/Mult			0	0.69	0.11



**2008-2009**  
**INTERIM PERFORMANCE REPORT**  
**MATHEMATICS CORE CONTENT**

School: Stonewall Elementary School  
 District: Fayette County  
 Code: 165085  
 Grade: 05

	No. Items	No. Observations	SCHOOL								STATE								School -State Mean
			Percents						Mean	Std. Err.	Percents						Mean		
			B	0	1	2	3	4					No. Observations	B	0	1		2	3
<b>OPEN RESPONSE</b>																			
1.x.x - Number Prop Oper	4	173	0	5	13	22	23	37	2.7	0.1	73,199	0	8	20	18	25	29	2.5	0.2
2.x.x - Measurement	1	19	0	26	37	0	16	21	1.7	0.3	8,380	0	37	30	13	10	11	1.3	0.4
3.x.x - Geometry	2	134	0	7	22	27	28	16	2.2	0.1	56,900	0	6	24	30	26	14	2.2	0.0
4.x.x - Data Analysis & Probabilit	1	115	0	12	12	20	18	37	2.6	0.1	48,828	0	15	18	15	17	35	2.4	0.2
5.x.x - Algebraic Thinking	1	19	0	5	16	5	21	53	3.0	0.3	8,005	0	13	15	20	17	35	2.5	0.5
<b>MULTIPLE CHOICE</b>																			
1.x.x - Number Prop Oper	29	1,514	Correct	Incorrect	Omit/Mult				0.67	0.01	643,144	Correct	Incorrect	Omit/Mult				0.63	0.04
2.x.x - Measurement	9	364	67	33	0				0.66	0.03	154,489	62	37	0				0.62	0.04
3.x.x - Geometry	14	652	67	34	0				0.81	0.02	276,516	78	22	0				0.78	0.03
4.x.x - Data Analysis & Probabilit	11	594	81	19	0				0.73	0.02	252,212	64	36	0				0.64	0.09
5.x.x - Algebraic Thinking	10	575	73	27	0				0.69	0.02	244,140	65	35	0				0.65	0.04



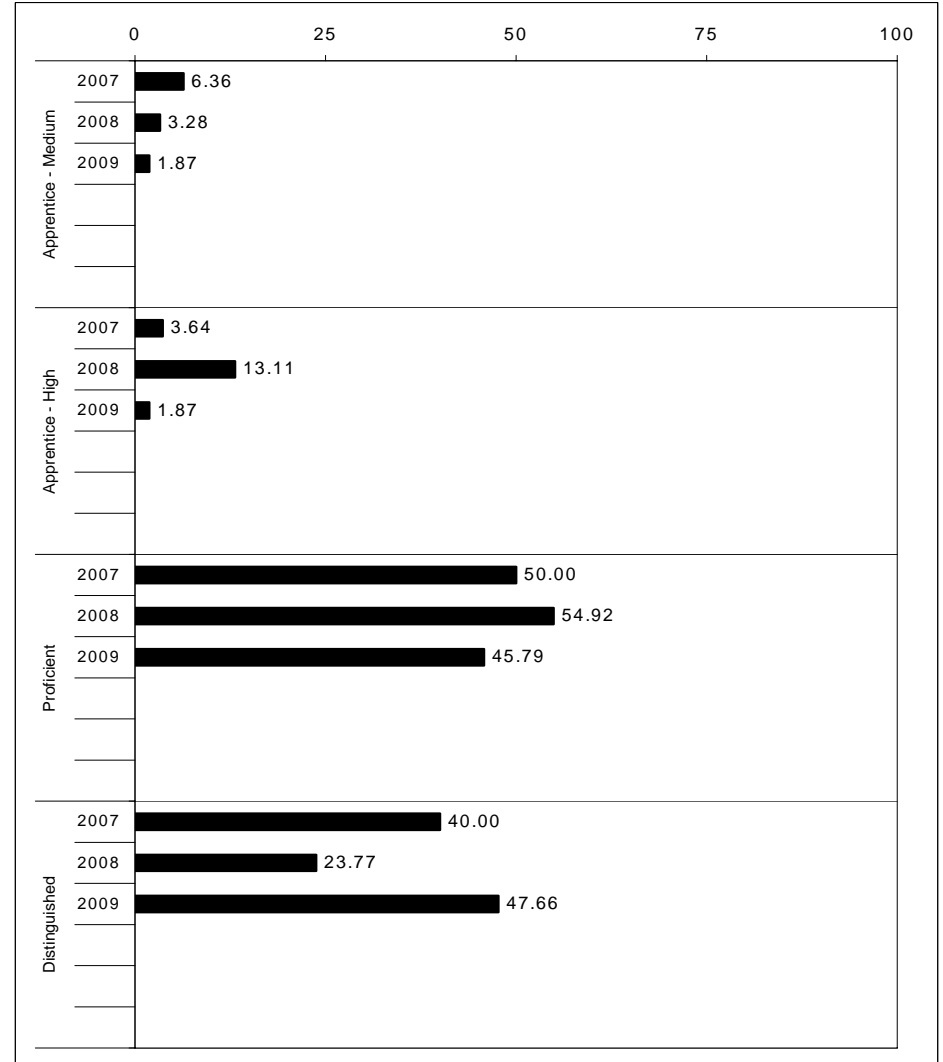
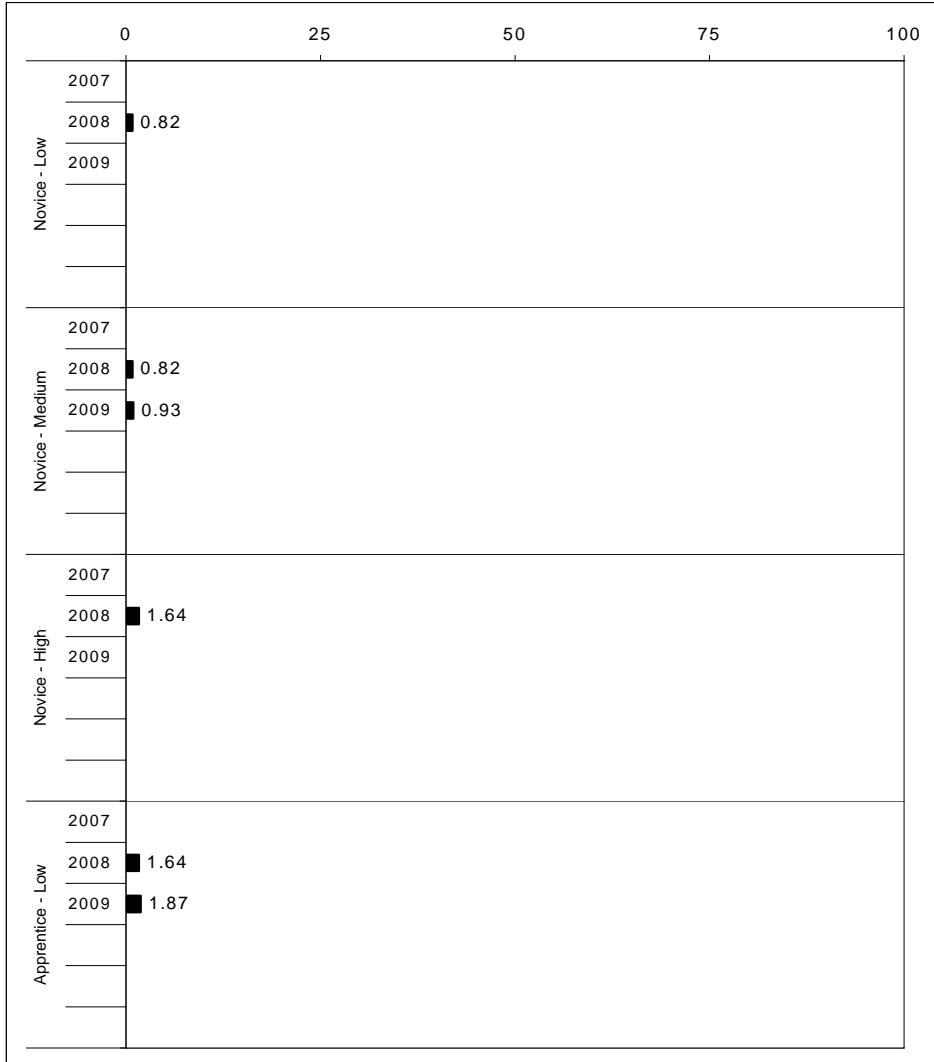
2008-2009  
**INTERIM PERFORMANCE REPORT**  
**SCIENCE TREND DATA**  
**Performance Level Percents**

School: Stonewall Elementary School

District: Fayette County

Code: 165085

Grade: 04

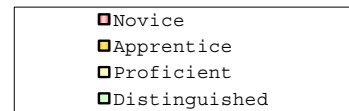
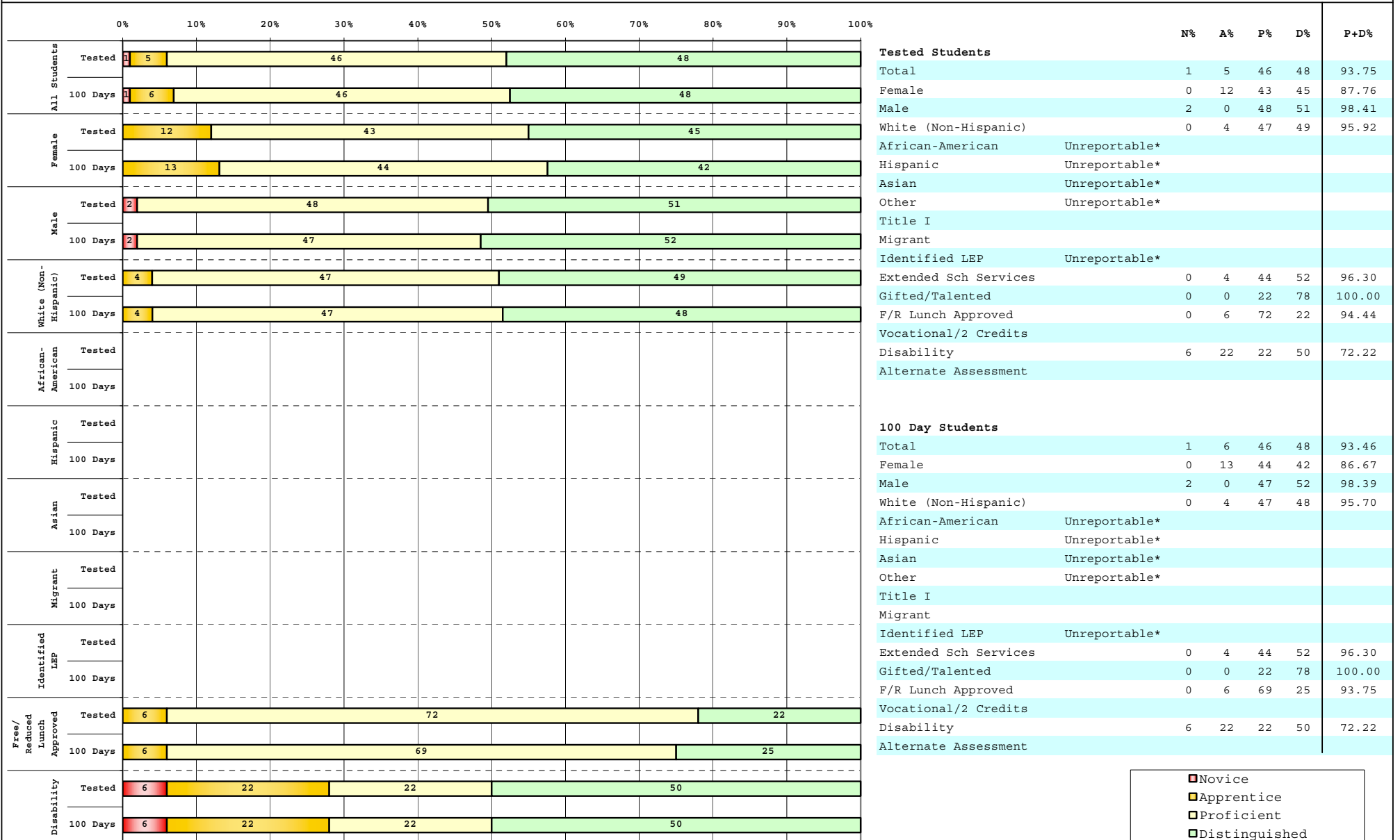


The horizontal bar represents the percent of students scoring at a performance level within a particular year. Percentages may not sum to 100% due to rounding.



**2008-2009  
INTERIM PERFORMANCE REPORT  
SCIENCE DISAGGREGATION  
Performance Level Percents**

School: Stonewall Elementary School  
District: Fayette County  
Code: 165085  
Grade: 04



Percentage may not sum to 100% due to rounding. 'Unreportable\*' indicates subpopulations with fewer than 10 students or subpopulations where all students score at the same performance level.



**2008-2009**  
**INTERIM PERFORMANCE REPORT**  
**SCIENCE CORE CONTENT**

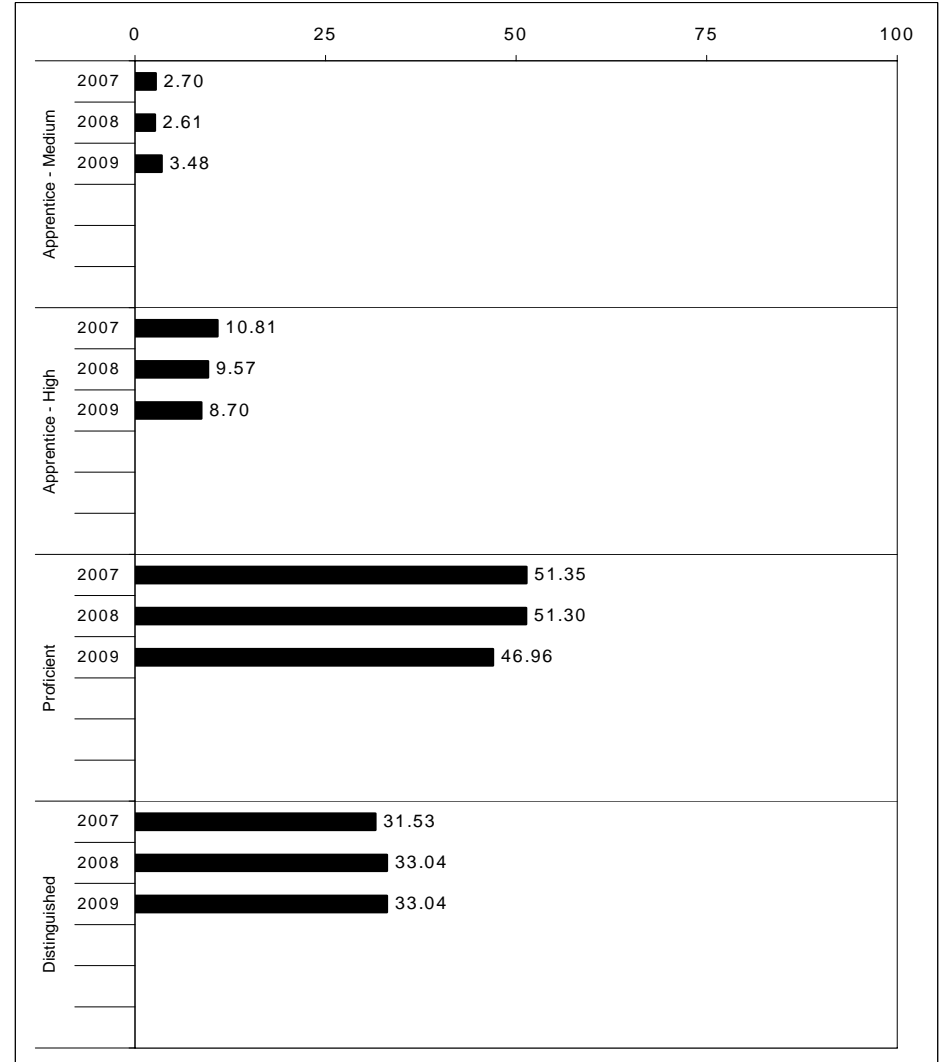
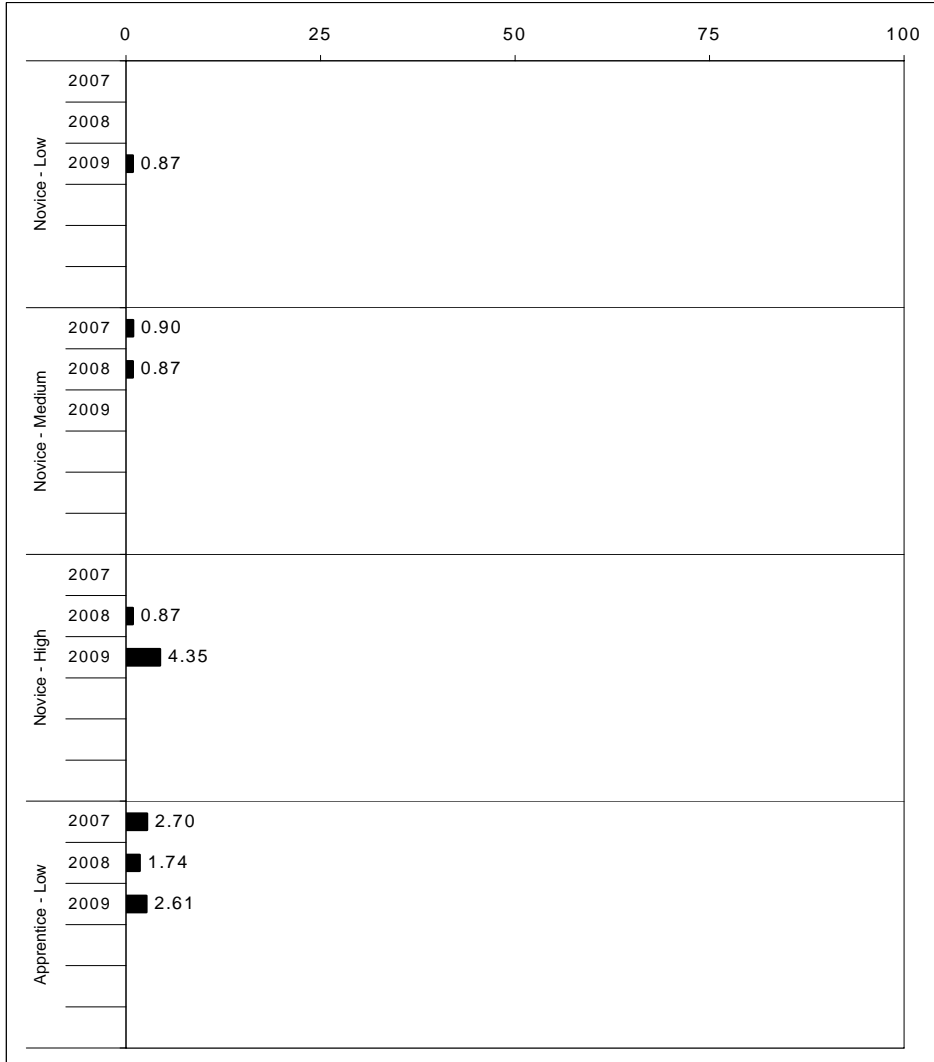
School: Stonewall Elementary School  
 District: Fayette County  
 Code: 165085  
 Grade: 04

	No. Items	No. Observations	SCHOOL								Std. Err.	No. Observations	STATE								School -State Mean
			B	0	1	2	3	4	Mean	B			0	1	2	3	4	Mean			
<b>OPEN RESPONSE</b>																					
1.x.x - Physical Science	2	33	0	9	15	36	30	9	2.2	0.2	16,337	0	17	19	42	17	5	1.7	0.5		
2.x.x - Earth Space Science	3	142	1	2	19	34	35	9	2.3	0.1	65,658	0	12	22	35	26	4	1.9	0.4		
3.x.x - Biological Science	3	146	1	1	1	34	48	16	2.8	0.1	65,506	0	2	11	33	44	9	2.5	0.3		
4.x.x - Unifying Concepts	2	122	0	1	7	24	45	24	2.8	0.1	57,508	0	3	13	33	35	15	2.5	0.3		
<b>MULTIPLE CHOICE</b>																					
1.x.x - Physical Science	18	856	86	14	0				0.86	0.01	393,336	82	18	0				0.81	0.05		
2.x.x - Earth Space Science	19	875	81	19	1				0.81	0.02	401,488	71	29	0				0.71	0.10		
3.x.x - Biological Science	22	1,018	87	13	0				0.87	0.01	467,138	78	22	0				0.78	0.09		
4.x.x - Unifying Concepts	14	694	92	8	0				0.92	0.01	319,534	84	15	0				0.84	0.08		



2008-2009  
**INTERIM PERFORMANCE REPORT**  
**SOCIAL STUDIES TREND DATA**  
**Performance Level Percents**

School: Stonewall Elementary School  
 District: Fayette County  
 Code: 165085  
 Grade: 05

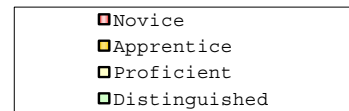
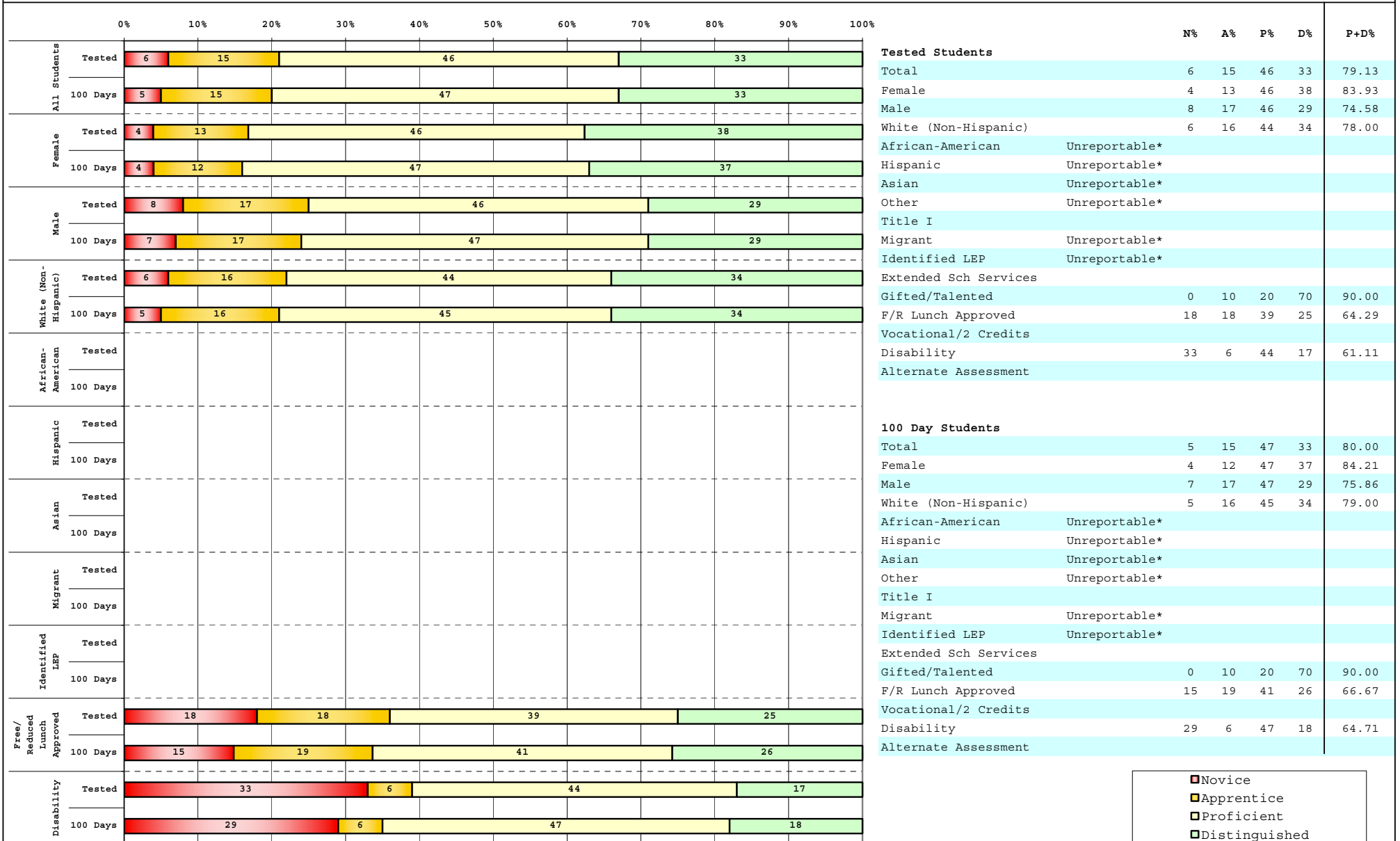


The horizontal bar represents the percent of students scoring at a performance level within a particular year. Percentages may not sum to 100% due to rounding.



2008-2009  
**INTERIM PERFORMANCE REPORT**  
**SOCIAL STUDIES DISAGGREGATION**  
**Performance Level Percents**

School: Stonewall Elementary School  
 District: Fayette County  
 Code: 165085  
 Grade: 05



Percentage may not sum to 100% due to rounding. 'Unreportable\*' indicates subpopulations with fewer than 10 students or subpopulations where all students score at the same performance level.



**2008-2009**  
**INTERIM PERFORMANCE REPORT**  
**SOCIAL STUDIES CORE CONTENT**

School: Stonewall Elementary School  
 District: Fayette County  
 Code: 165085  
 Grade: 05

	No. Items	No. Observations	SCHOOL								STATE								School -State Mean
			B	0	1	2	3	4	Mean	Std. Err.	No. Observations	B	0	1	2	3	4	Mean	
<b>OPEN RESPONSE</b>																			
1.x.x - Government & Civics	2	135	0	3	21	49	20	7	2.1	0.1	56,903	0	5	37	45	10	2	1.7	0.4
2.x.x - Cultures & Societies	1	19	0	0	11	42	37	11	2.5	0.2	8,151	0	4	21	56	15	4	1.9	0.6
3.x.x - Economics	1	115	0	4	23	43	19	10	2.1	0.1	48,828	0	11	33	41	12	3	1.6	0.5
4.x.x - Geography	2	38	0	3	24	34	37	3	2.1	0.2	16,077	0	9	32	39	17	3	1.7	0.4
5.x.x - Historical Perspective	3	153	0	3	17	58	20	2	2.0	0.1	65,353	0	7	35	46	10	2	1.7	0.3
<b>MULTIPLE CHOICE</b>																			
1.x.x - Government & Civics	14	747	68	32	0				0.68	0.02	317,571	66	34	0				0.66	0.02
2.x.x - Cultures & Societies	11	498	76	25	0				0.76	0.02	211,383	70	30	0				0.69	0.07
3.x.x - Economics	11	595	77	23	0				0.77	0.02	252,215	73	27	0				0.73	0.04
4.x.x - Geography	16	881	71	29	0				0.71	0.02	374,337	66	34	0				0.66	0.05
5.x.x - Historical Perspective	27	1,380	78	22	0				0.78	0.01	586,076	69	31	0				0.69	0.09



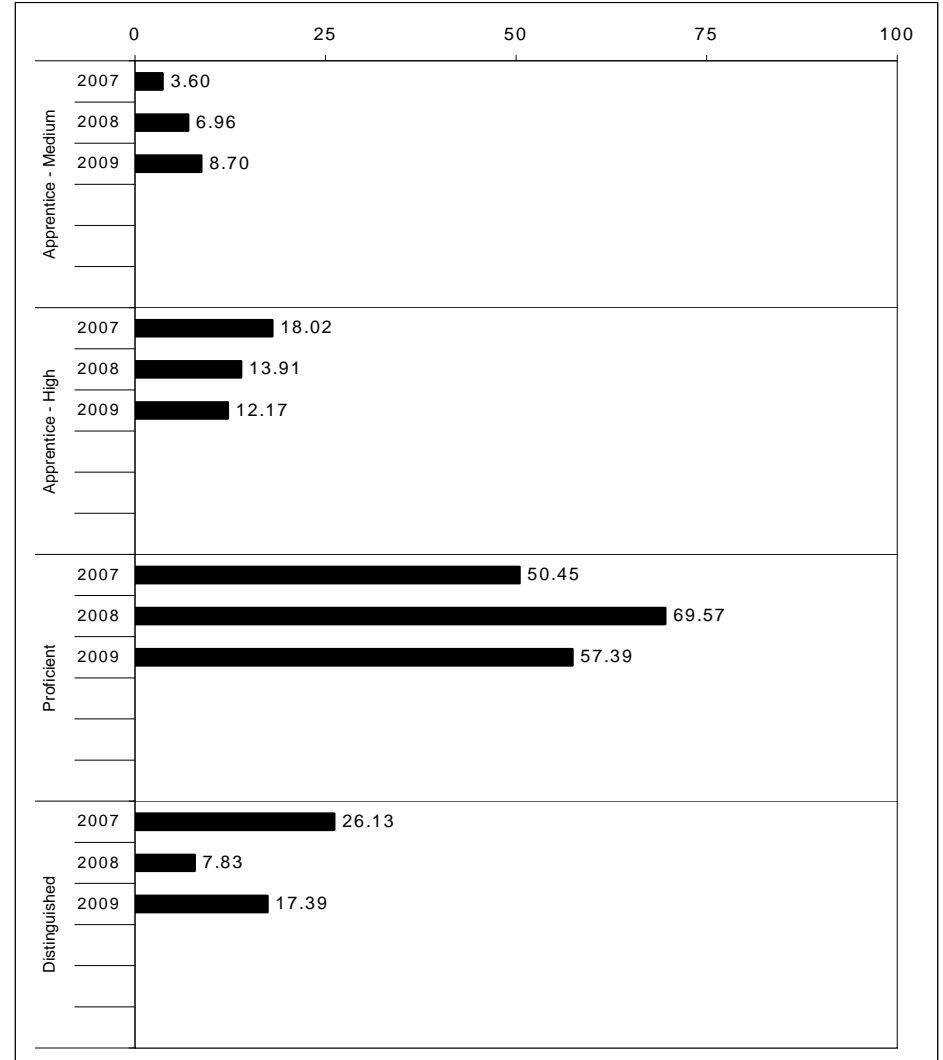
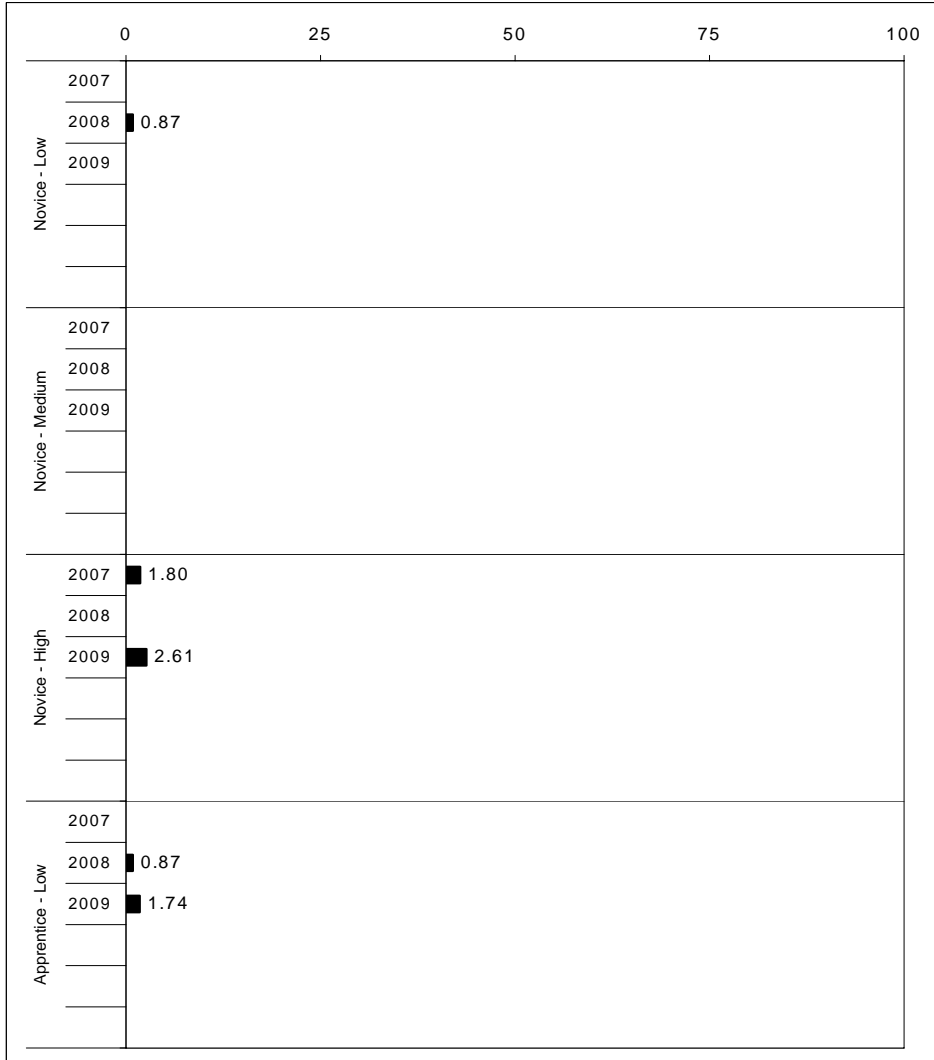
2008-2009  
**INTERIM PERFORMANCE REPORT**  
**WRITING ON-DEMAND TREND DATA**  
**Performance Level Percents**

School: Stonewall Elementary School

District: Fayette County

Code: 165085

Grade: 05

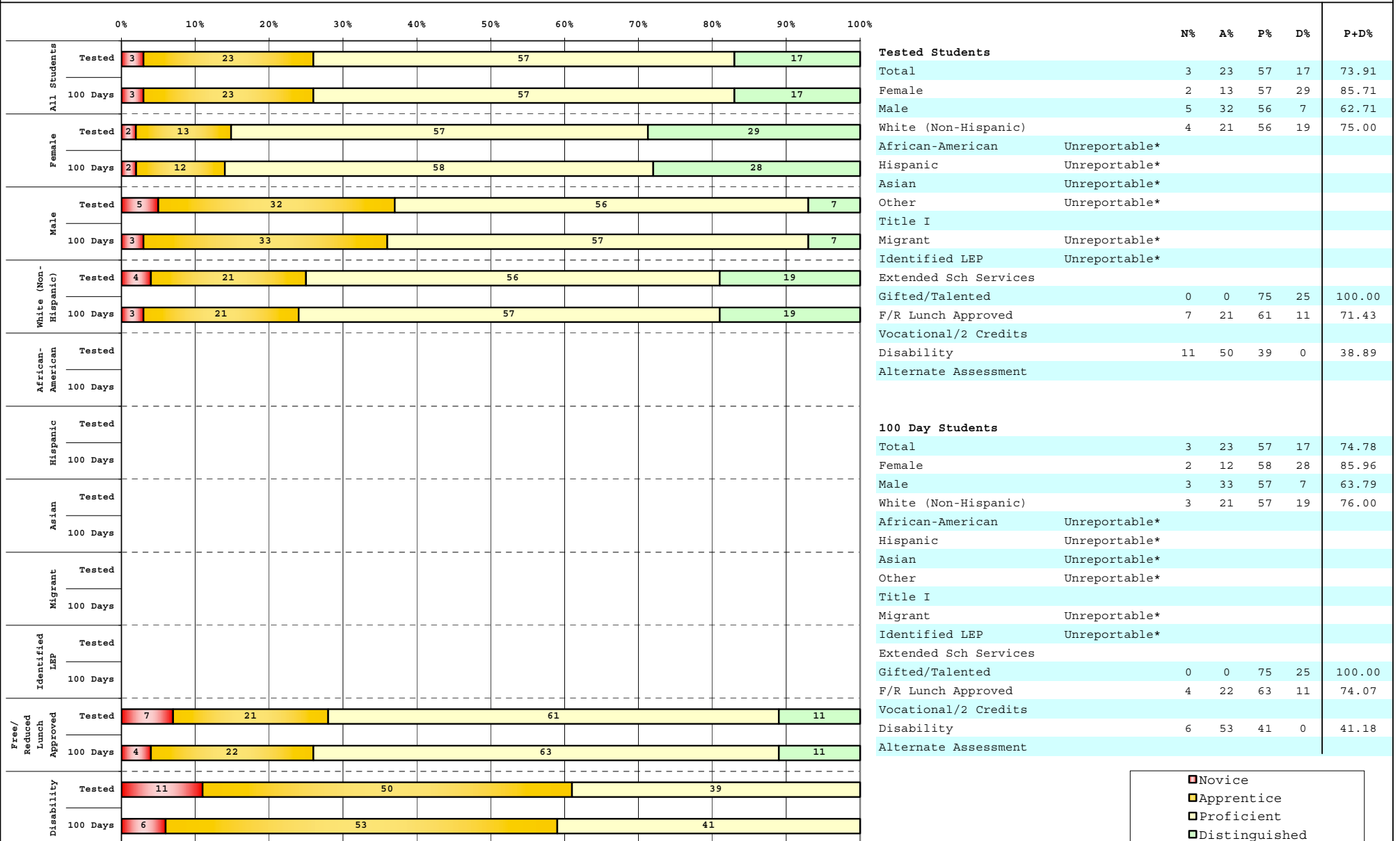


The horizontal bar represents the percent of students scoring at a performance level within a particular year. Percentages may not sum to 100% due to rounding.



2008-2009  
**INTERIM PERFORMANCE REPORT**  
**WRITING ON-DEMAND DISAGGREGATION**  
**Performance Level Percents**

School: Stonewall Elementary School  
 District: Fayette County  
 Code: 165085  
 Grade: 05



■	Novice
■	Apprentice
■	Proficient
■	Distinguished

Percentage may not sum to 100% due to rounding. 'Unreportable\*' indicates subpopulations with fewer than 10 students or subpopulations where all students score at the same performance level.



**2008-2009**  
**INTERIM PERFORMANCE REPORT**  
**WRITING ON-DEMAND CORE CONTENT**

School: Stonewall Elementary School  
 District: Fayette County  
 Code: 165085  
 Grade: 05

WRITING PROMPT	SCHOOL											STATE											School	
	No. Observations	Percents										Mean	Percents										Mean	-State Mean
	B	0	1	2	3	4	5	6	7	8	Mean	B	0	1	2	3	4	5	6	7	8	Mean		
<b>Inform</b>																								
1.X.X - Content	39	0	3	0	3	0	31	21	33	5	5	5.08	0	1	1	9	9	34	18	21	4	2	4.43	0.65
2.X.X - Structure	39	0	0	0	8	0	23	26	36	5	3	5.08	0	1	2	9	10	35	19	19	3	1	4.33	0.75
3.X.X - Convention	39	0	0	0	5	0	26	28	33	5	3	5.10	0	0	0	12	11	34	19	19	3	1	4.38	0.72
<b>Narrate for a purpose</b>																								
1.X.X - Content	38	0	0	0	0	8	24	16	37	8	8	5.37	0	1	1	10	9	36	18	21	3	1	4.35	1.02
2.X.X - Structure	38	0	0	0	0	8	32	11	37	11	3	5.18	0	1	2	10	10	37	17	19	3	1	4.27	0.91
3.X.X - Convention	38	0	0	0	0	5	26	18	34	11	5	5.34	0	0	0	12	10	36	18	19	3	1	4.33	1.01
<b>Persuade</b>																								
1.X.X - Content	38	0	0	0	5	0	24	26	29	8	8	5.29	0	1	1	8	8	33	19	21	5	3	4.50	0.79
2.X.X - Structure	38	0	0	0	5	5	29	18	26	13	3	5.05	0	2	2	9	10	33	19	20	5	2	4.42	0.63
3.X.X - Convention	38	0	0	0	8	3	21	24	29	11	5	5.16	0	0	0	11	10	32	19	20	5	2	4.50	0.66

MULTIPLE CHOICE	No. Items	SCHOOL						STATE						School
		No. Observations	Percents			Mean	Std. Err.	No. Observations	Percents			Mean	-State Mean	
			Correct	Incorrect	Omit/Mult				Correct	Incorrect	Omit/Mult			
4.x.x - Writing Process	52	1,380	73	27	0	0.73	0.01	585,936	73	27	0	0.73	0.00	
4.10.x - Revising	16	304	64	37	0	0.63	0.03	130,317	66	34	0	0.66	-0.03	
4.11.x - Editing	36	1,076	76	24	0	0.76	0.01	455,619	75	24	0	0.75	0.01	