



Interim Performance Report

In March 2009, the Kentucky General Assembly passed Senate Bill 1 (SB1) that was subsequently signed into law by the Governor. SB1 calls for a significant overhaul of the state's assessment and accountability system. The new assessment system begins in the spring of 2012. The school years of 2008-2009, 2009-2010 and 2010-2011 are described in SB1 as an interim period. This three-year period allows Kentucky to develop the new assessment system and to carry on state and federal testing requirements.

The Interim Performance Report includes the Kentucky Core Content Test (KCCT) in Reading (grades 3-8 and 10), Mathematics (grades 3-8 and 11), Science (grades 4, 7 and 11), Social Studies (grades 5, 8 and 11) and Writing On-Demand (grades 5, 8 and 12). The KCCT is based on the Kentucky Core Content for Assessment (Version 4.1) and contains multiple choice and open response questions. The Writing On-Demand test uses writing prompts that require students to craft a piece of writing in a 60 minute period.

The KCCT is developed under the direction of content advisory committees of Kentucky educators who draft, review and select test questions. All test items are reviewed by a bias review committee to enhance the fairness of items for all Kentucky students.

The KCCT continues to fulfill the requirements of the federal statute known as the No Child Left Behind Act of 2001. A separate accountability report for No Child Left Behind (NCLB) is published by the Kentucky Department of Education.

The Interim Performance Report focuses entirely on the five state-required content areas and provides data for schools or districts. The data in this report is not used directly for state accountability; although, these results can fulfill the requirements of Senate Bill 168 from 2002 and may be used by schools or districts for their own local accountability needs.

Performance standards are based on descriptions of Novice, Apprentice, Proficient and Distinguished (NAPD) student performance levels specific to the content area and grade being assessed. The performance standards, in conjunction with Kentucky's Core Content for Assessment, should allow instruction to better focus on the content area to be taught and on how well students must demonstrate achievement in each content area.

Reporting Changes for 2009

Based on SB1, Kentucky will not be reporting state accountability and academic indices as in the past. The report does have several familiar pages with performance level (NAPD) trend, core content and disaggregation data per content area. Districts and schools will still see distributions of how students scored in the Novice (with sublevels), Apprentice (with sublevels), Proficient and Distinguished performance levels.

Confidentiality Changes

Due to federal regulations around the Family Education Rights and Privacy Act (FERPA), the numbers of students have been removed. Though there is a need to report as much data as possible, there is also a paramount need to maintain the confidential aspects of individual scores. When scores are reported in what is commonly called "small cells" where very few students may be categorized, there is the possibility of revealing individual scores when numbers are reported. Numbers are reported to each district in a confidential report that accompanies the public Interim Performance Report.

**2008-2009
INTERIM PERFORMANCE REPORT**

School: Squires Elementary School
District: Fayette County
Code: 165082
Grade: PRIMARY-05

CONTENTS OF THIS REPORT

Introduction	1
Academic Trend Data	
Reading Results	2-8
Mathematics Results	9-15
Science Results	16-18
Social Studies Results	19-21
Writing Results	22-24

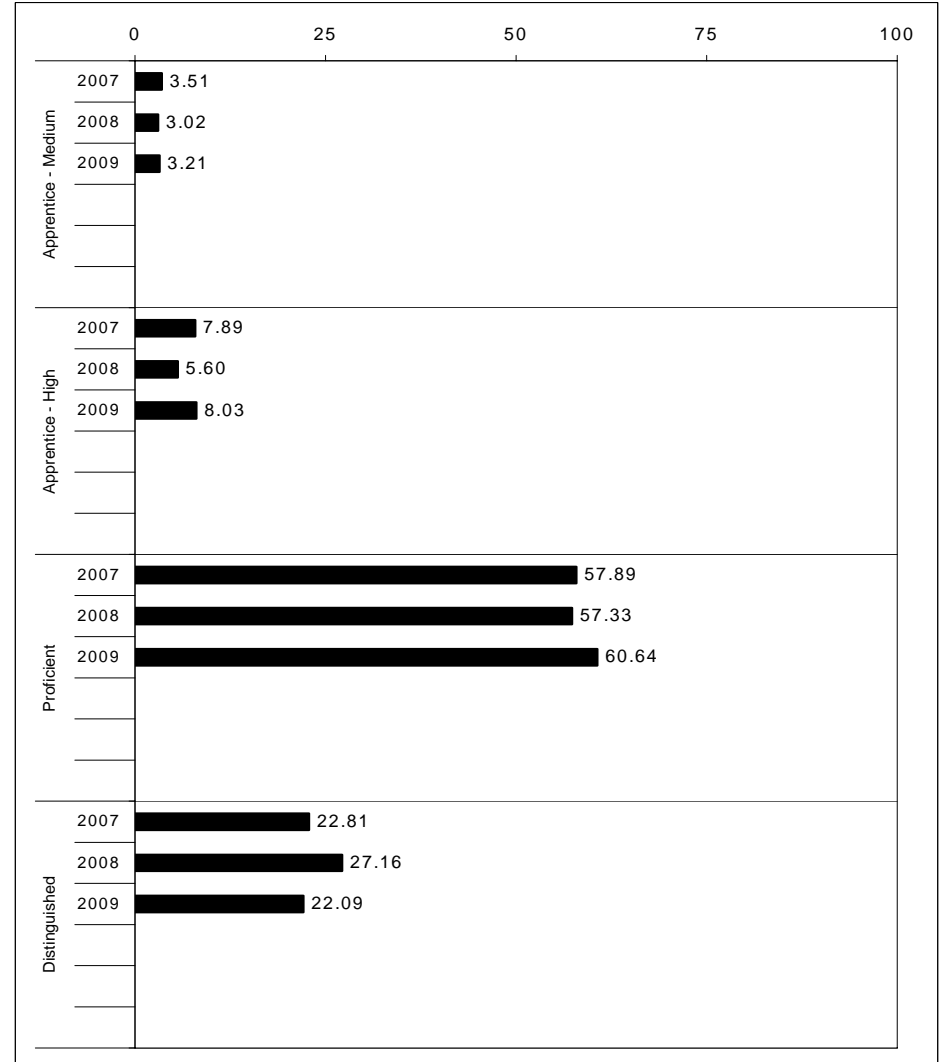
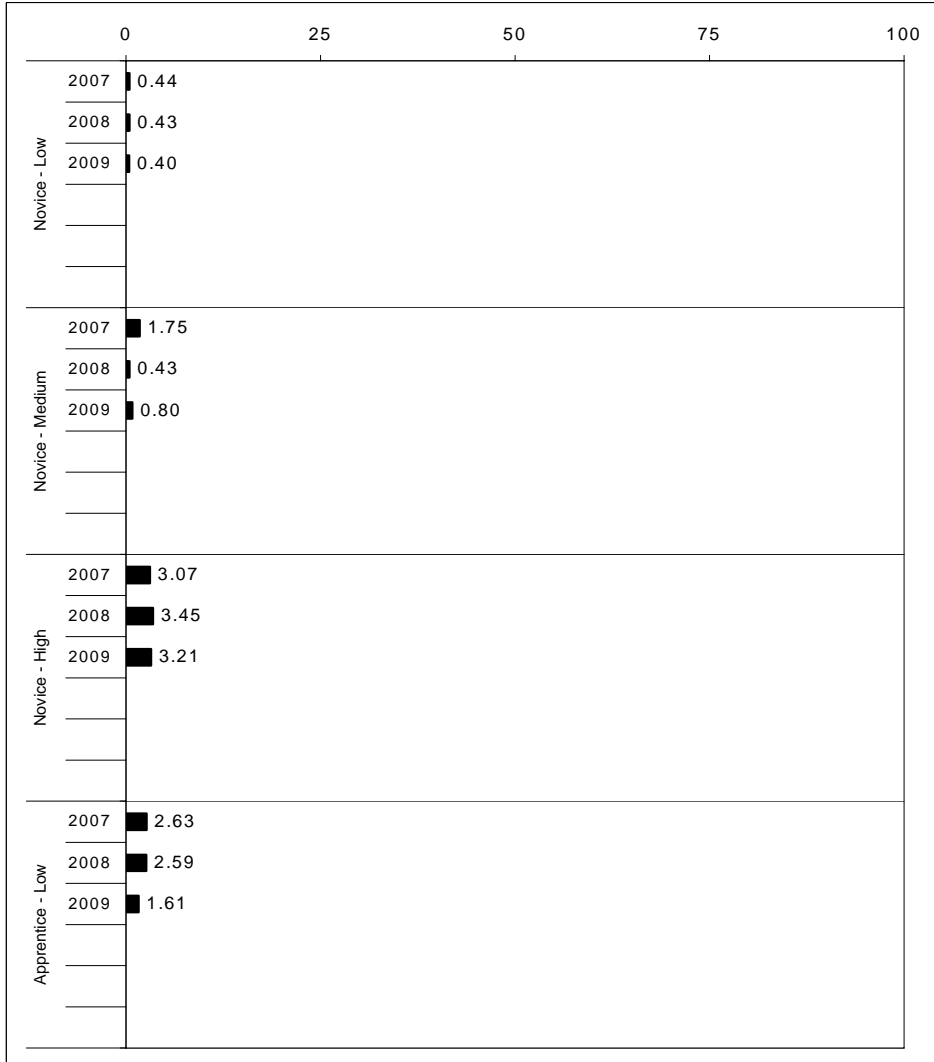
For more information, refer to the 2009 Interim Assessment Interpretative Guide on the Kentucky Department of Education Web site (www.education.ky.gov).





2008-2009
INTERIM PERFORMANCE REPORT
READING TREND DATA
Performance Level Percents

School: Squires Elementary School
 District: Fayette County
 Code: 165082
 Grade: ELEMENTARY



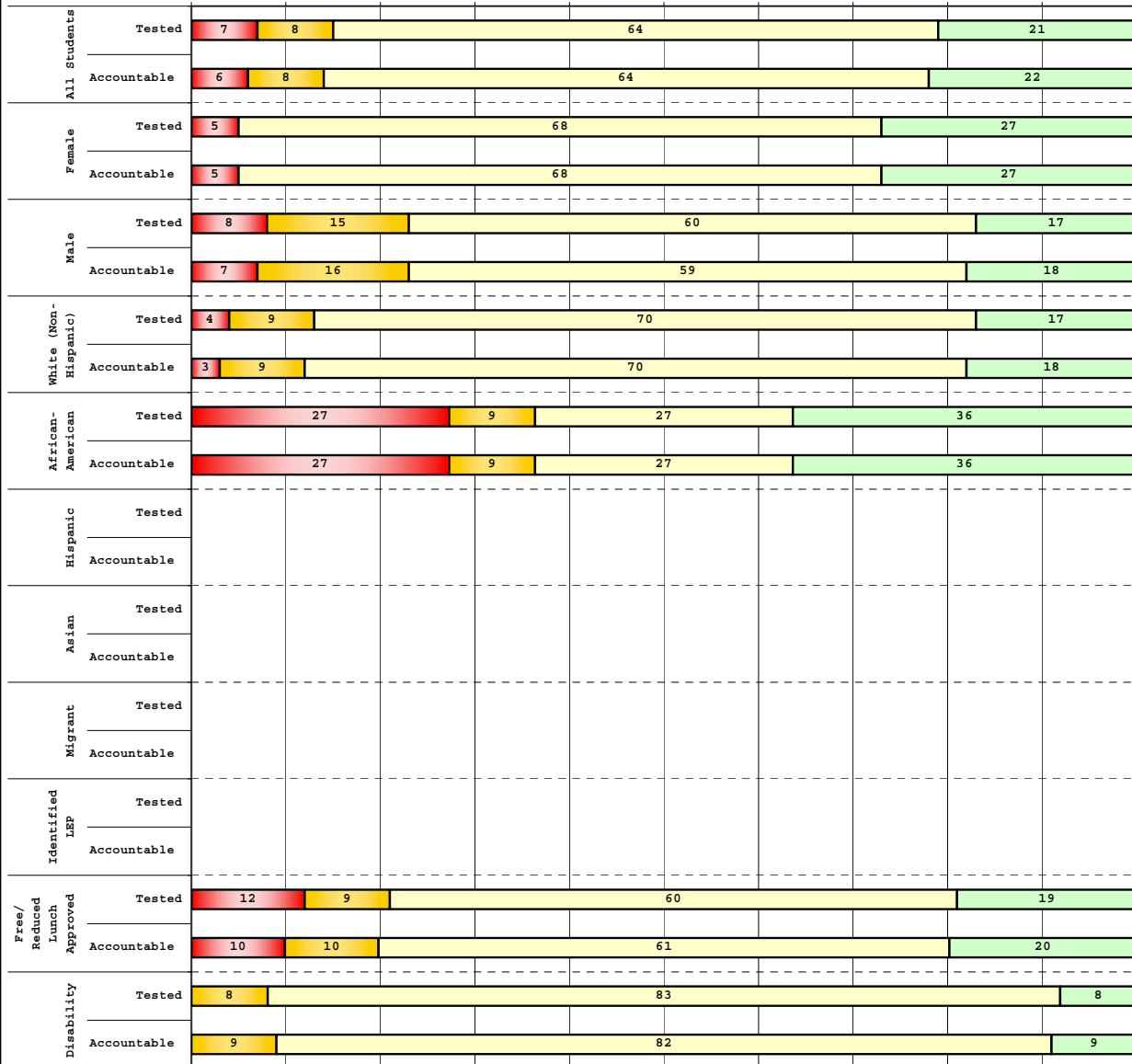
The horizontal bar represents the percent of students scoring at a performance level within a particular year. Percentages may not sum to 100% due to rounding.



**2008-2009
INTERIM PERFORMANCE REPORT
READING DISAGGREGATION
Performance Level Percents**

School: Squires Elementary School
District: Fayette County
Code: 165082
Grade: 03

0% 10% 20% 30% 40% 50% 60% 70% 80% 90% 100%



Tested Students

	N%	A%	P%	D%	P+D%
Total	7	8	64	21	85.39
Female	5	0	68	27	95.12
Male	8	15	60	17	77.08
White (Non-Hispanic)	4	9	70	17	87.14
African-American	27	9	27	36	63.64
Hispanic	Unreportable*				
Asian	Unreportable*				
Other	Unreportable*				
Title I	7	8	64	21	85.39
Migrant	Unreportable*				
Identified LEP	Unreportable*				
Extended Sch Services	21	21	50	8	58.33
Gifted/Talented	0	0	53	47	100.00
F/R Lunch Approved	12	9	60	19	79.07
Vocational/2 Credits	Unreportable*				
Disability	0	8	83	8	91.67
Alternate Assessment	Unreportable*				
NCLB Accountable Students					
Total	6	8	64	22	85.88
Female	5	0	68	27	95.12
Male	7	16	59	18	77.27
White (Non-Hispanic)	3	9	70	18	87.88
African-American	27	9	27	36	63.64
Hispanic	Unreportable*				
Asian	Unreportable*				
Other	Unreportable*				
Title I	6	8	64	22	85.88
Migrant	Unreportable*				
Identified LEP	Unreportable*				
Extended Sch Services	22	22	48	9	56.52
Gifted/Talented	0	0	53	47	100.00
F/R Lunch Approved	10	10	61	20	80.49
Vocational/2 Credits	Unreportable*				
Disability	0	9	82	9	90.91
Alternate Assessment	Unreportable*				

■ Novice
■ Apprentice
■ Proficient
■ Distinguished

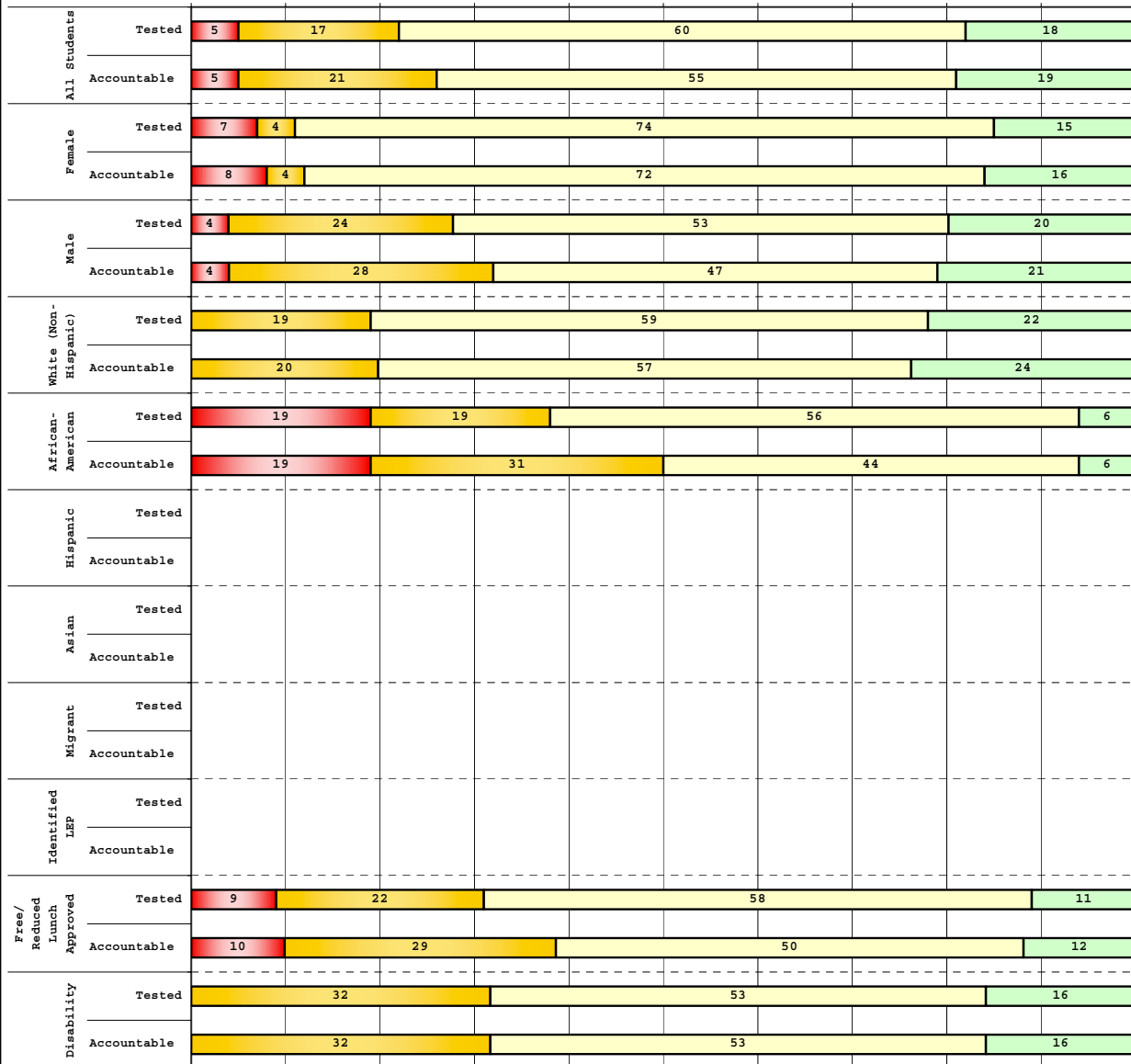
Percentage may not sum to 100% due to rounding. 'Unreportable*' indicates subpopulations with fewer than 10 students or subpopulations where all students score at the same performance level.



**2008-2009
INTERIM PERFORMANCE REPORT
READING DISAGGREGATION
Performance Level Percents**

School: Squires Elementary School
District: Fayette County
Code: 165082
Grade: 04

0% 10% 20% 30% 40% 50% 60% 70% 80% 90% 100%

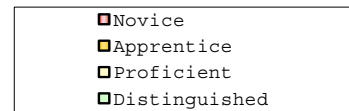


Tested Students

	N%	A%	P%	D%	P+D%
Total	5	17	60	18	78.05
Female	7	4	74	15	88.89
Male	4	24	53	20	72.73
White (Non-Hispanic)	0	19	59	22	81.48
African-American	19	19	56	6	62.50
Hispanic	Unreportable*				
Asian	Unreportable*				
Other	10	10	60	20	80.00
Title I	5	17	60	18	78.05
Migrant	Unreportable*				
Identified LEP	Unreportable*				
Extended Sch Services	10	33	52	5	57.14
Gifted/Talented	0	0	53	47	100.00
F/R Lunch Approved	9	22	58	11	68.89
Vocational/2 Credits	Unreportable*				
Disability	0	32	53	16	68.42
Alternate Assessment	Unreportable*				

NCLB Accountable Students

	N%	A%	P%	D%	P+D%
Total	5	21	55	19	74.36
Female	8	4	72	16	88.00
Male	4	28	47	21	67.92
White (Non-Hispanic)	0	20	57	24	80.39
African-American	19	31	44	6	50.00
Hispanic	Unreportable*				
Asian	Unreportable*				
Other	Unreportable*				
Title I	5	21	55	19	74.36
Migrant	Unreportable*				
Identified LEP	Unreportable*				
Extended Sch Services	10	38	48	5	52.38
Gifted/Talented	0	0	53	47	100.00
F/R Lunch Approved	10	29	50	12	61.90
Vocational/2 Credits	Unreportable*				
Disability	0	32	53	16	68.42
Alternate Assessment	Unreportable*				



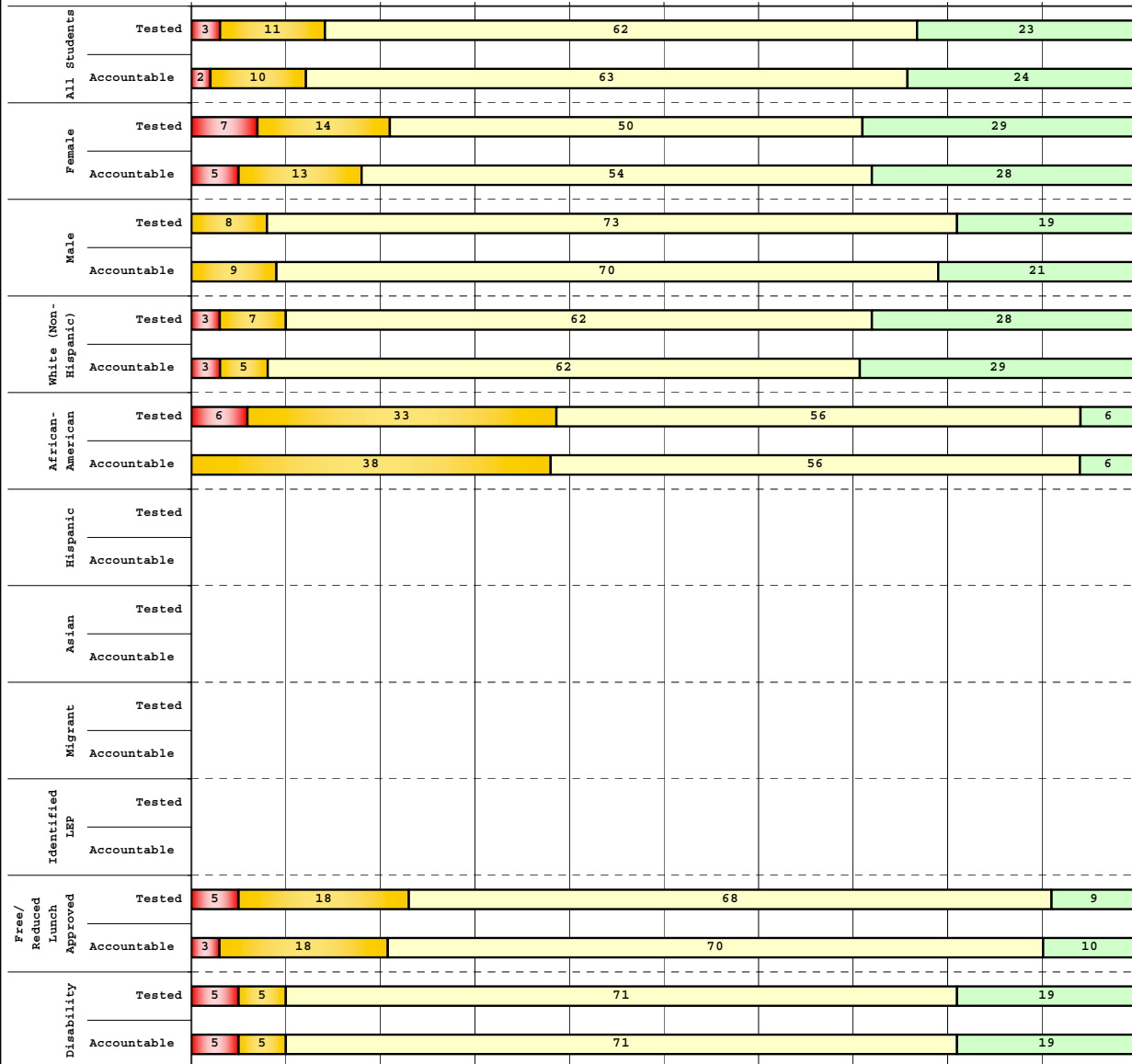
Percentage may not sum to 100% due to rounding. 'Unreportable*' indicates subpopulations with fewer than 10 students or subpopulations where all students score at the same performance level.



**2008-2009
INTERIM PERFORMANCE REPORT
READING DISAGGREGATION
Performance Level Percents**

School: Squires Elementary School
District: Fayette County
Code: 165082
Grade: 05

0% 10% 20% 30% 40% 50% 60% 70% 80% 90% 100%



	N%	A%	P%	D%	P+D%
Tested Students					
Total	3	11	62	23	85.56
Female	7	14	50	29	78.57
Male	0	8	73	19	91.67
White (Non-Hispanic)	3	7	62	28	90.00
African-American	6	33	56	6	61.11
Hispanic	Unreportable*				
Asian	Unreportable*				
Other	Unreportable*				
Title I	3	11	62	23	85.56
Migrant	Unreportable*				
Identified LEP					
Extended Sch Services	5	24	62	10	71.43
Gifted/Talented	0	0	31	69	100.00
F/R Lunch Approved	5	18	68	9	77.27
Vocational/2 Credits	Unreportable*				
Disability	5	5	71	19	90.48
Alternate Assessment	Unreportable*				
NCLB Accountable Students					
Total	2	10	63	24	87.21
Female	5	13	54	28	82.05
Male	0	9	70	21	91.49
White (Non-Hispanic)	3	5	62	29	91.38
African-American	0	38	56	6	62.50
Hispanic	Unreportable*				
Asian	Unreportable*				
Other	Unreportable*				
Title I	2	10	63	24	87.21
Migrant	Unreportable*				
Identified LEP					
Extended Sch Services	5	25	60	10	70.00
Gifted/Talented	0	0	27	73	100.00
F/R Lunch Approved	3	18	70	10	80.00
Vocational/2 Credits	Unreportable*				
Disability	5	5	71	19	90.48
Alternate Assessment	Unreportable*				

■ Novice
■ Apprentice
■ Proficient
■ Distinguished

Percentage may not sum to 100% due to rounding. 'Unreportable*' indicates subpopulations with fewer than 10 students or subpopulations where all students score at the same performance level.



2008-2009
INTERIM PERFORMANCE REPORT
READING CORE CONTENT

School: Squires Elementary School
 District: Fayette County
 Code: 165082
 Grade: 03

	No. Items	No. Observations	SCHOOL								Std. Err.	No. Observations	STATE								School -State Mean
			B	0	1	2	3	4	Mean	B			0	1	2	3	4	Mean			
OPEN RESPONSE																					
2.0.x - Developing Understanding	2	168	0	6	31	39	19	5	1.9	0.1	100,212	0	10	30	44	14	2	1.7	0.2		
3.0.x - Interpreting Text	2	168	0	6	31	39	19	5	1.9	0.1	100,212	0	10	30	44	14	2	1.7	0.2		
MULTIPLE CHOICE																					
1.0.x - Forming a Foundation	32	658	87	13	0				0.87	0.01	392,589	83	17	0				0.83	0.04		
2.0.x - Developing Understanding	89	1,676	83	17	0				0.83	0.01	993,477	80	20	0				0.80	0.03		
3.0.x - Interpreting Text	31	772	79	21	0				0.79	0.02	468,115	77	23	0				0.77	0.02		
5.0.x - Critical Stance	15	355	81	19	0				0.81	0.02	208,359	79	21	0				0.79	0.02		



2008-2009
INTERIM PERFORMANCE REPORT
READING CORE CONTENT

School: Squires Elementary School
 District: Fayette County
 Code: 165082
 Grade: 04

	No. Items	No. Observations	SCHOOL								Std. Err.	No. Observations	STATE								School -State Mean
			B	0	1	2	3	4	Mean	B			0	1	2	3	4	Mean			
OPEN RESPONSE																					
2.0.x - Developing Understanding	5	130	0	3	18	54	21	5	2.1	0.1	81,849	0	3	24	52	18	3	1.9	0.2		
3.0.x - Interpreting Text	6	208	0	3	18	44	27	7	2.2	0.1	131,199	0	4	22	45	23	5	2.0	0.2		
MULTIPLE CHOICE																					
1.0.x - Forming a Foundation	34	634	74	26	0				0.74	0.02	401,452	72	28	0				0.71	0.03		
2.0.x - Developing Understanding	76	1,399	73	27	0				0.73	0.01	868,422	73	27	0				0.73	0.00		
3.0.x - Interpreting Text	29	431	85	16	0				0.84	0.02	278,648	79	21	0				0.79	0.05		
5.0.x - Critical Stance	9	246	76	24	0				0.76	0.03	155,704	74	26	0				0.74	0.02		



2008-2009
INTERIM PERFORMANCE REPORT
READING CORE CONTENT

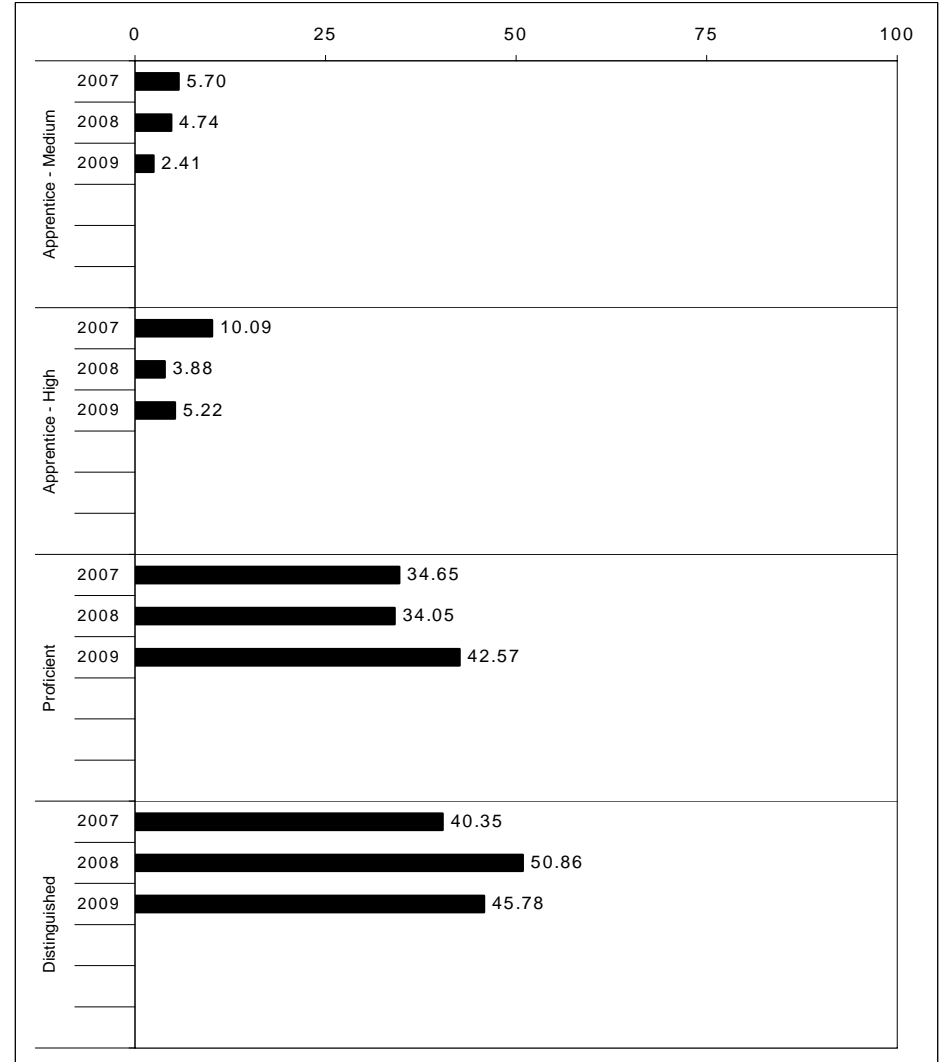
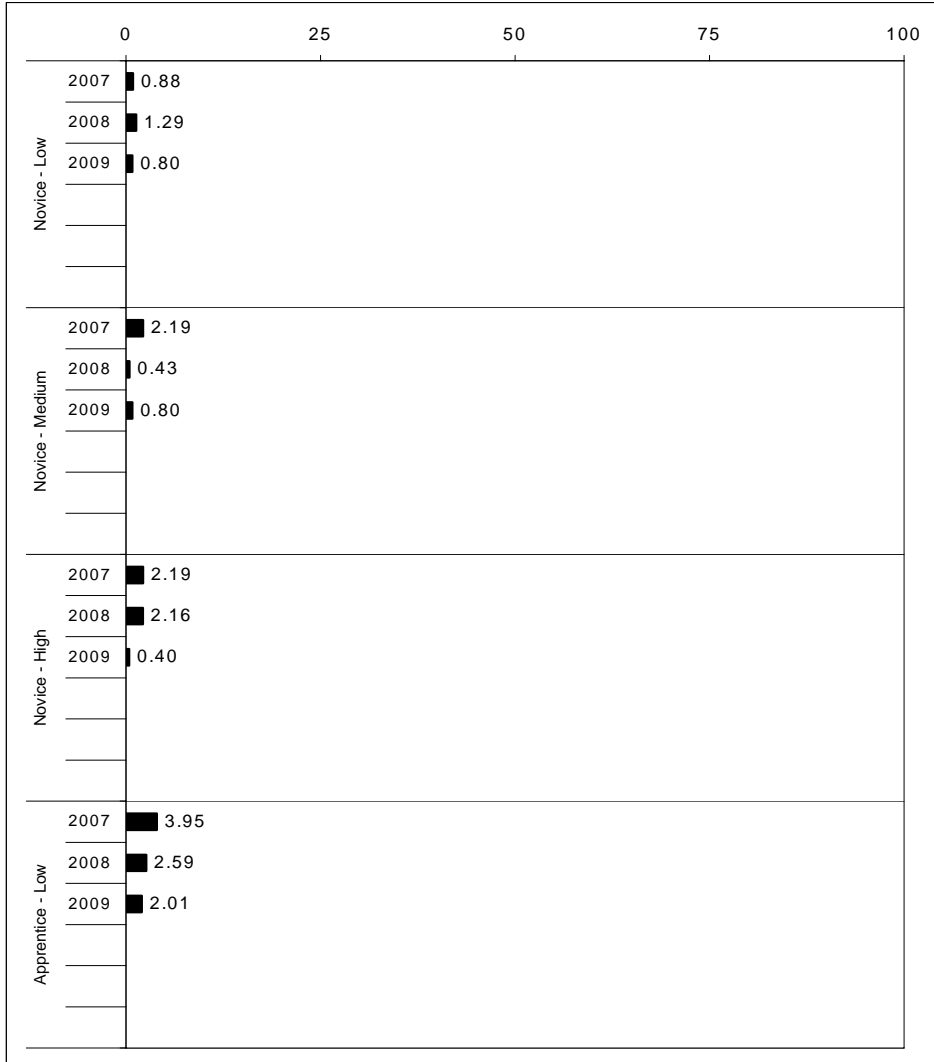
School: Squires Elementary School
 District: Fayette County
 Code: 165082
 Grade: 05

	No. Items	No. Observations	SCHOOL							Mean	Std. Err.	No. Observations	STATE							Mean	School -State Mean
			B	0	1	2	3	4	B				0	1	2	3	4				
OPEN RESPONSE																					
2.0.x - Developing Understanding	6	157	0	2	10	48	31	10	2.4	0.1	89,507	0	5	23	48	20	5	2.0	0.4		
3.0.x - Interpreting Text	6	224	0	2	6	55	29	8	2.3	0.1	130,403	0	5	21	50	19	4	2.0	0.3		
MULTIPLE CHOICE																					
1.0.x - Forming a Foundation	28	469	78	22	0				0.78	0.02	268,187	74	26	0				0.74	0.04		
2.0.x - Developing Understanding	71	1,417	81	19	0				0.81	0.01	823,068	80	20	0				0.80	0.01		
3.0.x - Interpreting Text	27	602	85	15	0				0.85	0.02	341,653	81	19	0				0.81	0.04		
5.0.x - Critical Stance	17	528	78	22	0				0.78	0.02	300,671	75	25	0				0.75	0.03		



2008-2009
INTERIM PERFORMANCE REPORT
MATHEMATICS TREND DATA
Performance Level Percents

School: Squires Elementary School
 District: Fayette County
 Code: 165082
 Grade: ELEMENTARY



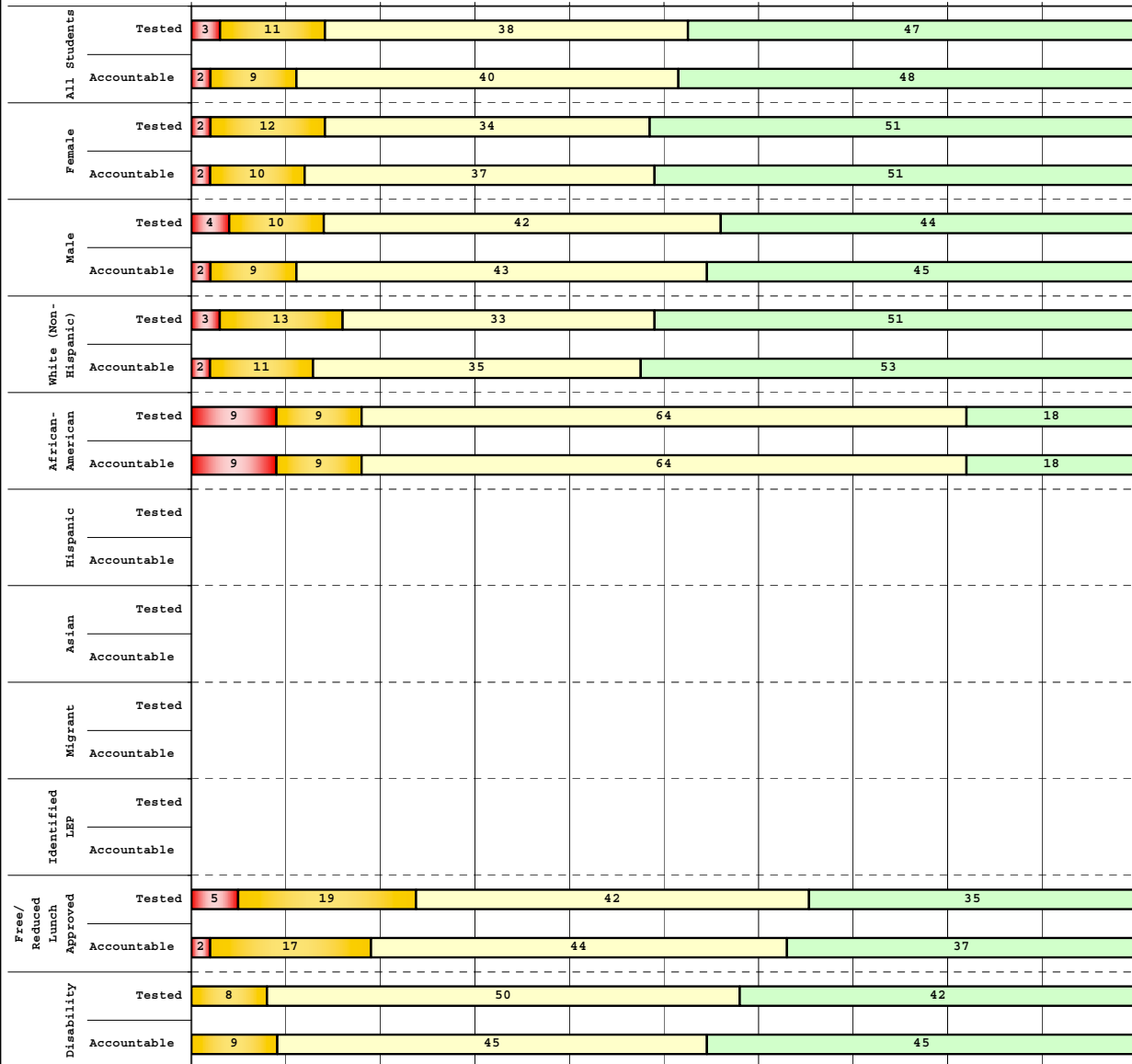
The horizontal bar represents the percent of students scoring at a performance level within a particular year. Percentages may not sum to 100% due to rounding.



**2008-2009
INTERIM PERFORMANCE REPORT
MATHEMATICS DISAGGREGATION
Performance Level Percents**

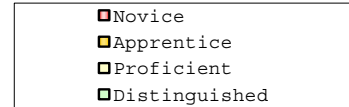
School: Squires Elementary School
District: Fayette County
Code: 165082
Grade: 03

0% 10% 20% 30% 40% 50% 60% 70% 80% 90% 100%



Tested Students

	N%	A%	P%	D%	P+D%
Total	3	11	38	47	85.39
Female	2	12	34	51	85.37
Male	4	10	42	44	85.42
White (Non-Hispanic)	3	13	33	51	84.29
African-American	9	9	64	18	81.82
Hispanic	Unreportable*				
Asian	Unreportable*				
Other	Unreportable*				
Title I	3	11	38	47	85.39
Migrant	Unreportable*				
Identified LEP	Unreportable*				
Extended Sch Services	8	29	54	8	62.50
Gifted/Talented	0	0	7	93	100.00
F/R Lunch Approved	5	19	42	35	76.74
Vocational/2 Credits	Unreportable*				
Disability	0	8	50	42	91.67
Alternate Assessment	Unreportable*				
NCLB Accountable Students					
Total	2	9	40	48	88.24
Female	2	10	37	51	87.80
Male	2	9	43	45	88.64
White (Non-Hispanic)	2	11	35	53	87.88
African-American	9	9	64	18	81.82
Hispanic	Unreportable*				
Asian	Unreportable*				
Other	Unreportable*				
Title I	2	9	40	48	88.24
Migrant	Unreportable*				
Identified LEP	Unreportable*				
Extended Sch Services	9	26	57	9	65.22
Gifted/Talented	0	0	7	93	100.00
F/R Lunch Approved	2	17	44	37	80.49
Vocational/2 Credits	Unreportable*				
Disability	0	9	45	45	90.91
Alternate Assessment	Unreportable*				



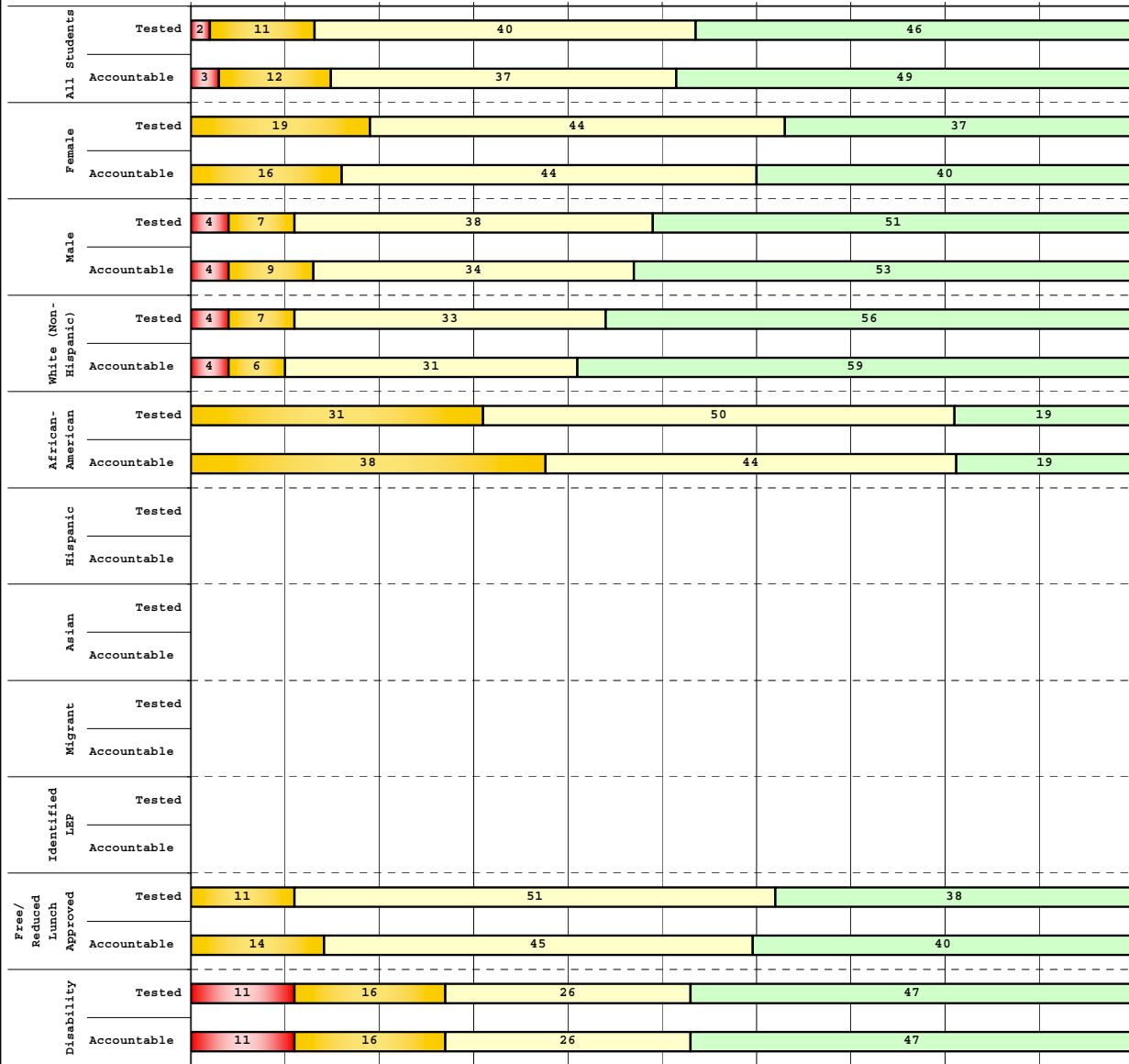
Percentage may not sum to 100% due to rounding. 'Unreportable*' indicates subpopulations with fewer than 10 students or subpopulations where all students score at the same performance level.



2008-2009
INTERIM PERFORMANCE REPORT
MATHEMATICS DISAGGREGATION
Performance Level Percents

School: Squires Elementary School
 District: Fayette County
 Code: 165082
 Grade: 04

0% 10% 20% 30% 40% 50% 60% 70% 80% 90% 100%



	N%	A%	P%	D%	P+D%
Tested Students					
Total	2	11	40	46	86.59
Female	0	19	44	37	81.48
Male	4	7	38	51	89.09
White (Non-Hispanic)	4	7	33	56	88.89
African-American	0	31	50	19	68.75
Hispanic	Unreportable*				
Asian	Unreportable*				
Other	0	0	60	40	100.00
Title I	2	11	40	46	86.59
Migrant	Unreportable*				
Identified LEP	Unreportable*				
Extended Sch Services	5	19	52	24	76.19
Gifted/Talented	Unreportable*				
F/R Lunch Approved	0	11	51	38	88.89
Vocational/2 Credits	Unreportable*				
Disability	11	16	26	47	73.68
Alternate Assessment	Unreportable*				
NCLB Accountable Students					
Total	3	12	37	49	85.90
Female	0	16	44	40	84.00
Male	4	9	34	53	86.79
White (Non-Hispanic)	4	6	31	59	90.20
African-American	0	38	44	19	62.50
Hispanic	Unreportable*				
Asian	Unreportable*				
Other	Unreportable*				
Title I	3	12	37	49	85.90
Migrant	Unreportable*				
Identified LEP	Unreportable*				
Extended Sch Services	5	24	48	24	71.43
Gifted/Talented	Unreportable*				
F/R Lunch Approved	0	14	45	40	85.71
Vocational/2 Credits	Unreportable*				
Disability	11	16	26	47	73.68
Alternate Assessment	Unreportable*				

Novice
 Apprentice
 Proficient
 Distinguished

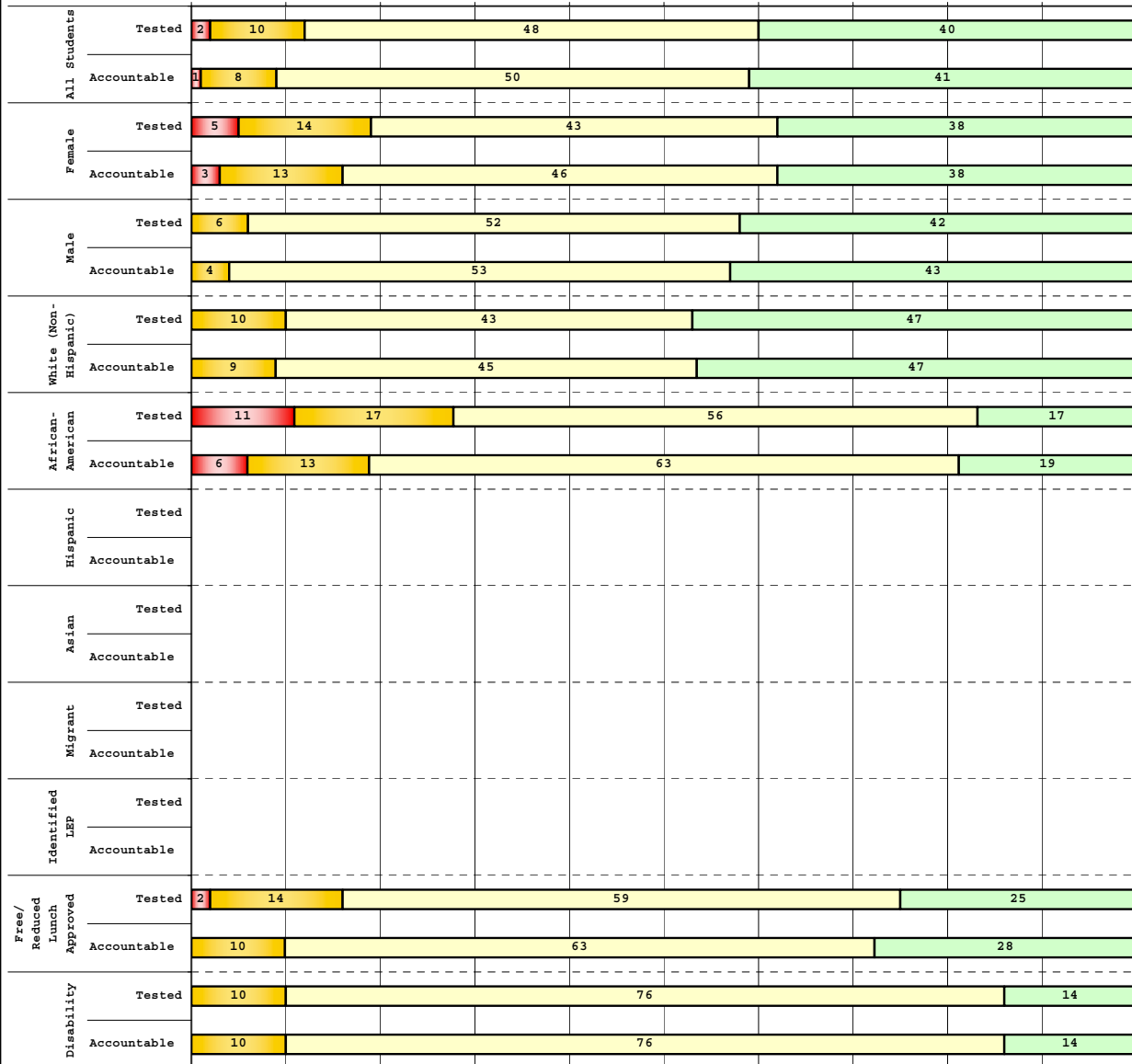
Percentage may not sum to 100% due to rounding. 'Unreportable*' indicates subpopulations with fewer than 10 students or subpopulations where all students score at the same performance level.



**2008-2009
INTERIM PERFORMANCE REPORT
MATHEMATICS DISAGGREGATION
Performance Level Percents**

School: Squires Elementary School
District: Fayette County
Code: 165082
Grade: 05

0% 10% 20% 30% 40% 50% 60% 70% 80% 90% 100%



	N%	A%	P%	D%	P+D%
Tested Students					
Total	2	10	48	40	87.78
Female	5	14	43	38	80.95
Male	0	6	52	42	93.75
White (Non-Hispanic)	0	10	43	47	90.00
African-American	11	17	56	17	72.22
Hispanic	Unreportable*				
Asian	Unreportable*				
Other	Unreportable*				
Title I	2	10	48	40	87.78
Migrant	Unreportable*				
Identified LEP	Unreportable*				
Extended Sch Services	5	24	57	14	71.43
Gifted/Talented	0	0	8	92	100.00
F/R Lunch Approved	2	14	59	25	84.09
Vocational/2 Credits	Unreportable*				
Disability	0	10	76	14	90.48
Alternate Assessment	Unreportable*				
NCLB Accountable Students					
Total	1	8	50	41	90.70
Female	3	13	46	38	84.62
Male	0	4	53	43	95.74
White (Non-Hispanic)	0	9	45	47	91.38
African-American	6	13	63	19	81.25
Hispanic	Unreportable*				
Asian	Unreportable*				
Other	Unreportable*				
Title I	1	8	50	41	90.70
Migrant	Unreportable*				
Identified LEP	Unreportable*				
Extended Sch Services	5	20	60	15	75.00
Gifted/Talented	Unreportable*				
F/R Lunch Approved	0	10	63	28	90.00
Vocational/2 Credits	Unreportable*				
Disability	0	10	76	14	90.48
Alternate Assessment	Unreportable*				

■ Novice
■ Apprentice
■ Proficient
■ Distinguished

Percentage may not sum to 100% due to rounding. 'Unreportable*' indicates subpopulations with fewer than 10 students or subpopulations where all students score at the same performance level.



2008-2009
INTERIM PERFORMANCE REPORT
MATHEMATICS CORE CONTENT

School: Squires Elementary School
 District: Fayette County
 Code: 165082
 Grade: 03

	No. Items	No. Observations	SCHOOL								Std. Err.	No. Observations	STATE								School -State Mean
			B	0	1	2	3	4	Mean	B			0	1	2	3	4	Mean			
OPEN RESPONSE																					
1.x.x - Number Prop Oper	5	212	0	14	37	25	14	11	1.7	0.1	125,243	0	21	35	26	10	8	1.5	0.2		
2.x.x - Measurement	1	15	0	13	7	27	20	33	2.5	0.4	8,325	0	25	5	30	14	25	2.1	0.4		
3.x.x - Geometry	2	26	0	4	19	31	23	23	2.4	0.2	16,777	0	8	24	35	13	20	2.1	0.3		
4.x.x - Data Analysis & Probabilit	1	84	0	5	6	18	19	52	3.1	0.1	50,106	0	9	13	19	27	32	2.6	0.5		
5.x.x - Algebraic Thinking	2	98	0	5	8	18	19	49	3.0	0.1	58,404	0	9	14	19	28	31	2.6	0.4		
MULTIPLE CHOICE																					
1.x.x - Number Prop Oper	32	1,355	Correct	Incorrect	Omit/Mult				0.82	0.01	810,106	Correct	Incorrect	Omit/Mult				0.74	0.08		
2.x.x - Measurement	7	310	82	18	0				0.87	0.02	183,647	74	26	0				0.81	0.06		
3.x.x - Geometry	18	672	87	13	0				0.89	0.01	400,848	81	18	0				0.85	0.04		
4.x.x - Data Analysis & Probabilit	8	322	89	11	0				0.74	0.03	192,126	85	15	0				0.69	0.05		
5.x.x - Algebraic Thinking	11	365	74	26	0				0.83	0.02	217,089	69	31	0				0.78	0.05		



2008-2009
INTERIM PERFORMANCE REPORT
MATHEMATICS CORE CONTENT

School: Squires Elementary School
 District: Fayette County
 Code: 165082
 Grade: 04

	No. Items	No. Observations	SCHOOL								Std. Err.	No. Observations	STATE								School -State Mean
			B	0	1	2	3	4	Mean	B			0	1	2	3	4	Mean			
OPEN RESPONSE																					
1.x.x - Number Prop Oper	4	122	0	12	29	23	25	11	1.9	0.1	73,656	0	17	24	29	19	12	1.9	0.0		
2.x.x - Measurement	1	15	0	33	40	13	13	0	1.1	0.4	8,195	0	43	13	10	20	13	1.5	-0.4		
3.x.x - Geometry	2	89	0	3	13	15	22	46	2.9	0.1	57,352	0	11	20	17	19	33	2.4	0.5		
4.x.x - Data Analysis & Probabilit	1	12	0	0	33	25	42	0	2.1	0.3	8,152	0	5	36	29	23	6	1.9	0.2		
5.x.x - Algebraic Thinking	2	89	0	1	21	36	31	10	2.3	0.1	57,508	0	5	27	32	25	11	2.1	0.2		
MULTIPLE CHOICE																					
1.x.x - Number Prop Oper	31	1,047	75	25	0				0.75	0.01	664,194	67	33	0				0.67	0.08		
2.x.x - Measurement	7	227	75	25	0				0.75	0.03	139,170	62	38	0				0.62	0.13		
3.x.x - Geometry	14	443	88	12	0				0.88	0.02	278,460	77	23	0				0.77	0.11		
4.x.x - Data Analysis & Probabilit	12	479	79	21	0				0.79	0.02	303,394	71	29	0				0.71	0.08		
5.x.x - Algebraic Thinking	11	404	74	26	0				0.74	0.02	253,829	69	31	0				0.69	0.05		



2008-2009
INTERIM PERFORMANCE REPORT
MATHEMATICS CORE CONTENT

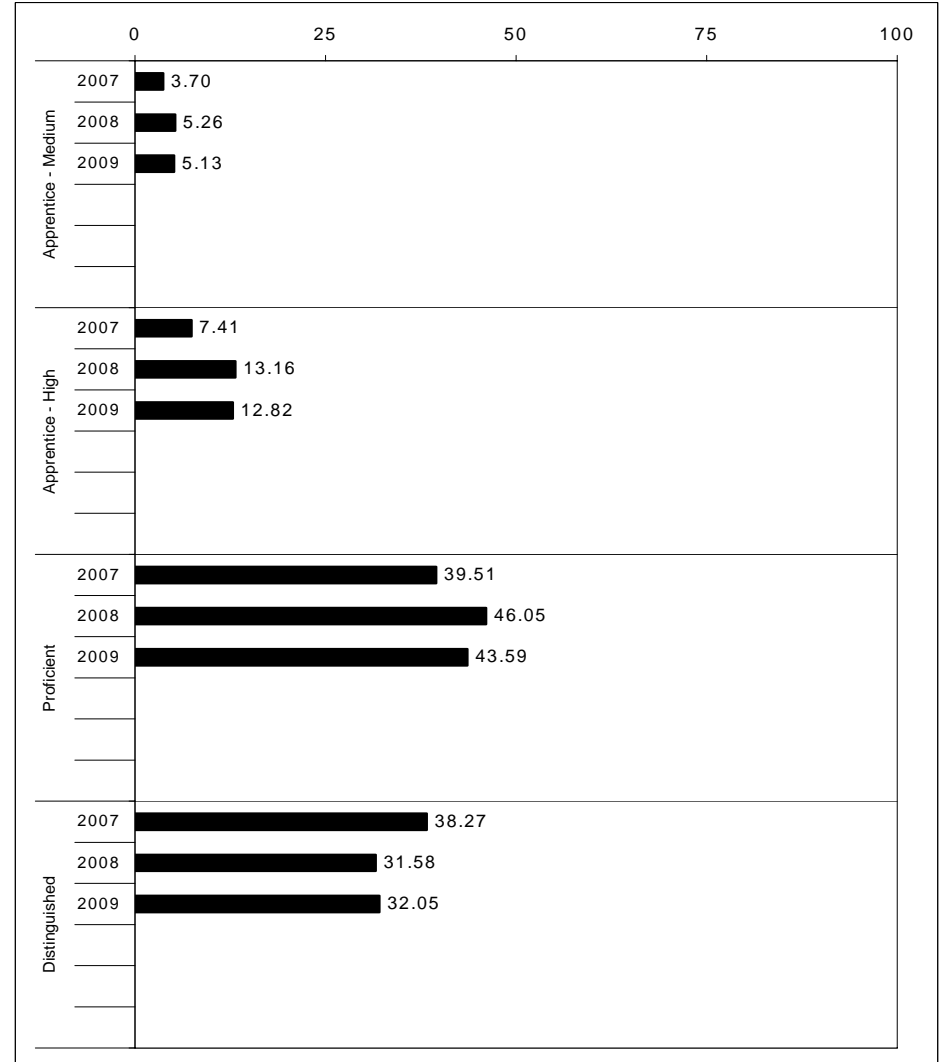
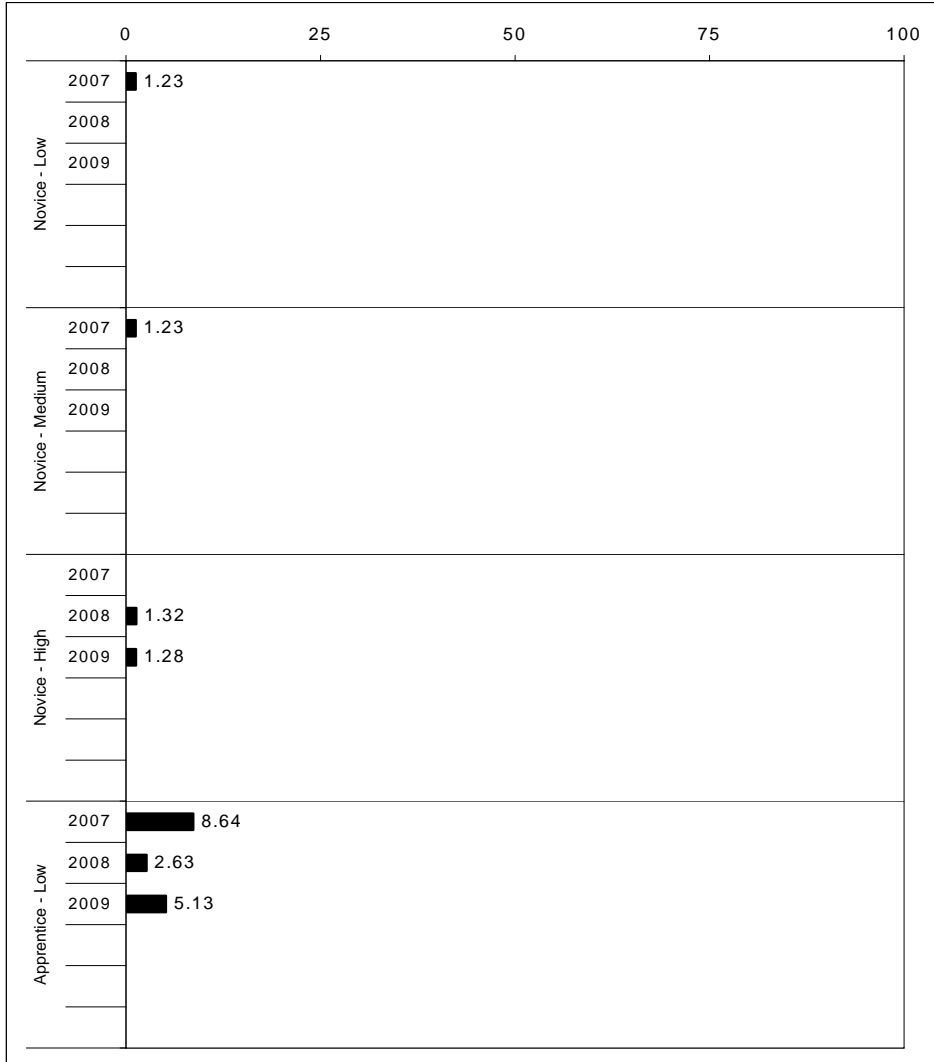
School: Squires Elementary School
 District: Fayette County
 Code: 165082
 Grade: 05

	No. Items	No. Observations	SCHOOL								STATE								School -State Mean
			B	0	1	2	3	4	Mean	Std. Err.	No. Observations	B	0	1	2	3	4	Mean	
OPEN RESPONSE																			
1.x.x - Number Prop Oper	4	127	0	2	12	20	19	47	3.0	0.1	73,199	0	8	20	18	25	29	2.5	0.5
2.x.x - Measurement	1	12	0	17	33	17	8	25	1.9	0.4	8,380	0	37	30	13	10	11	1.3	0.6
3.x.x - Geometry	2	101	0	1	15	33	34	18	2.5	0.1	56,900	0	6	24	30	26	14	2.2	0.3
4.x.x - Data Analysis & Probabilit	1	85	0	13	22	14	14	36	2.4	0.2	48,828	0	15	18	15	17	35	2.4	0.0
5.x.x - Algebraic Thinking	1	15	0	0	13	7	20	60	3.3	0.4	8,005	0	13	15	20	17	35	2.5	0.8
MULTIPLE CHOICE																			
1.x.x - Number Prop Oper	29	1,117	76	24	0				0.76	0.01	643,144	63	37	0				0.63	0.13
2.x.x - Measurement	9	270	73	27	0				0.73	0.03	154,489	62	38	0				0.62	0.11
3.x.x - Geometry	14	482	84	16	0				0.84	0.02	276,516	78	22	0				0.78	0.06
4.x.x - Data Analysis & Probabilit	11	441	76	24	0				0.76	0.02	252,212	64	36	0				0.64	0.12
5.x.x - Algebraic Thinking	10	425	77	23	0				0.77	0.02	244,140	65	35	0				0.65	0.12



2008-2009
INTERIM PERFORMANCE REPORT
SCIENCE TREND DATA
Performance Level Percents

School: Squires Elementary School
 District: Fayette County
 Code: 165082
 Grade: 04

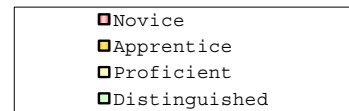
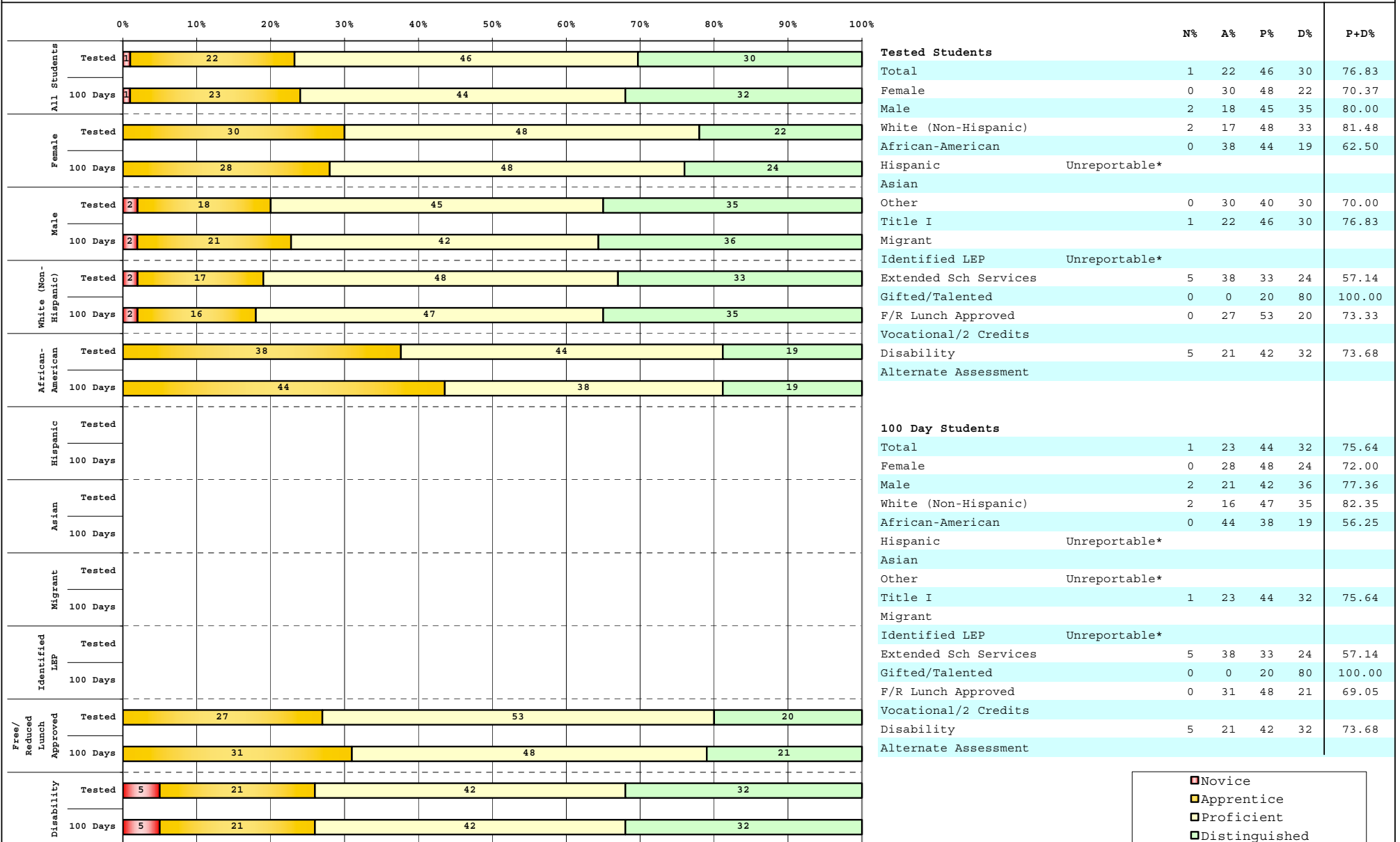


The horizontal bar represents the percent of students scoring at a performance level within a particular year. Percentages may not sum to 100% due to rounding.



**2008-2009
INTERIM PERFORMANCE REPORT
SCIENCE DISAGGREGATION
Performance Level Percents**

School: Squires Elementary School
District: Fayette County
Code: 165082
Grade: 04



Percentage may not sum to 100% due to rounding. 'Unreportable*' indicates subpopulations with fewer than 10 students or subpopulations where all students score at the same performance level.



2008-2009
INTERIM PERFORMANCE REPORT
SCIENCE CORE CONTENT

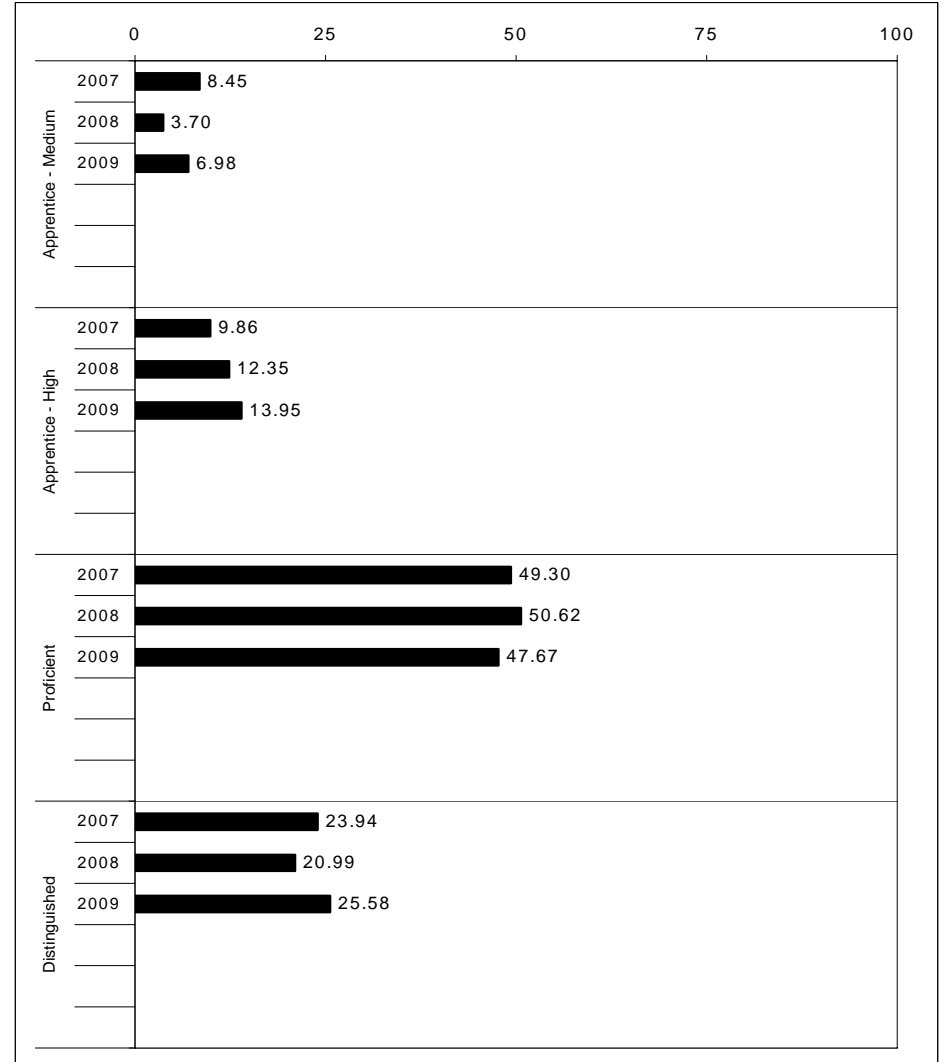
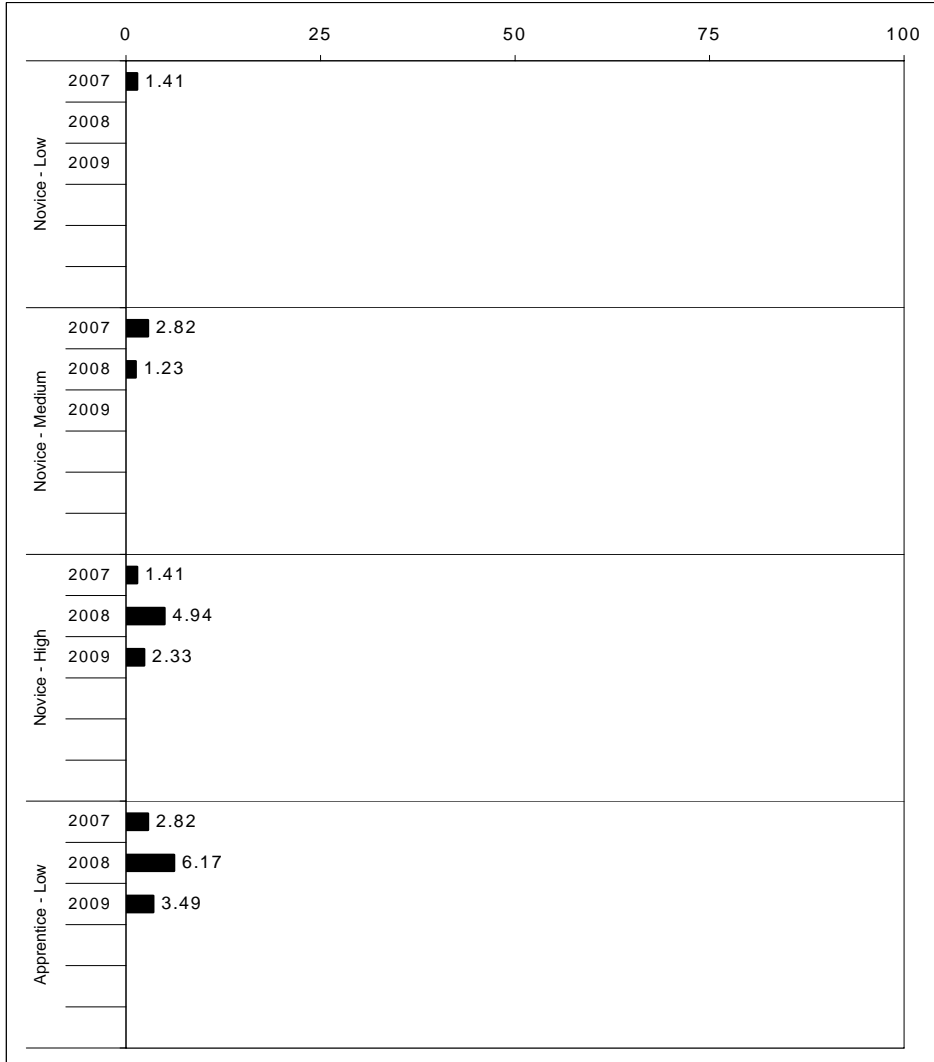
School: Squires Elementary School
 District: Fayette County
 Code: 165082
 Grade: 04

	No. Items	No. Observations	SCHOOL							Mean	Std. Err.	No. Observations	STATE							Mean	School -State Mean
			B	0	1	2	3	4	B				0	1	2	3	4				
OPEN RESPONSE																					
1.x.x - Physical Science	2	23	0	4	13	61	17	4	2.0	0.2	16,337	0	17	19	42	17	5	1.7	0.3		
2.x.x - Earth Space Science	3	103	0	12	17	36	32	4	2.0	0.1	65,658	0	12	22	35	26	4	1.9	0.1		
3.x.x - Biological Science	3	108	0	0	10	38	46	6	2.5	0.1	65,506	0	2	11	33	44	9	2.5	0.0		
4.x.x - Unifying Concepts	2	89	0	0	11	36	39	13	2.6	0.1	57,508	0	3	13	33	35	15	2.5	0.1		
MULTIPLE CHOICE																					
1.x.x - Physical Science	18	624	84	16	1				0.84	0.02	393,336	82	18	0				0.81	0.03		
2.x.x - Earth Space Science	19	636	75	25	0				0.75	0.02	401,488	71	29	0				0.71	0.04		
3.x.x - Biological Science	22	742	80	19	0				0.80	0.02	467,138	78	22	0				0.78	0.02		
4.x.x - Unifying Concepts	14	506	89	11	0				0.89	0.02	319,534	84	15	0				0.84	0.05		



2008-2009
INTERIM PERFORMANCE REPORT
SOCIAL STUDIES TREND DATA
Performance Level Percents

School: Squires Elementary School
 District: Fayette County
 Code: 165082
 Grade: 05

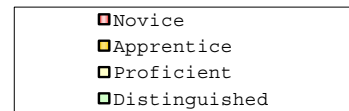
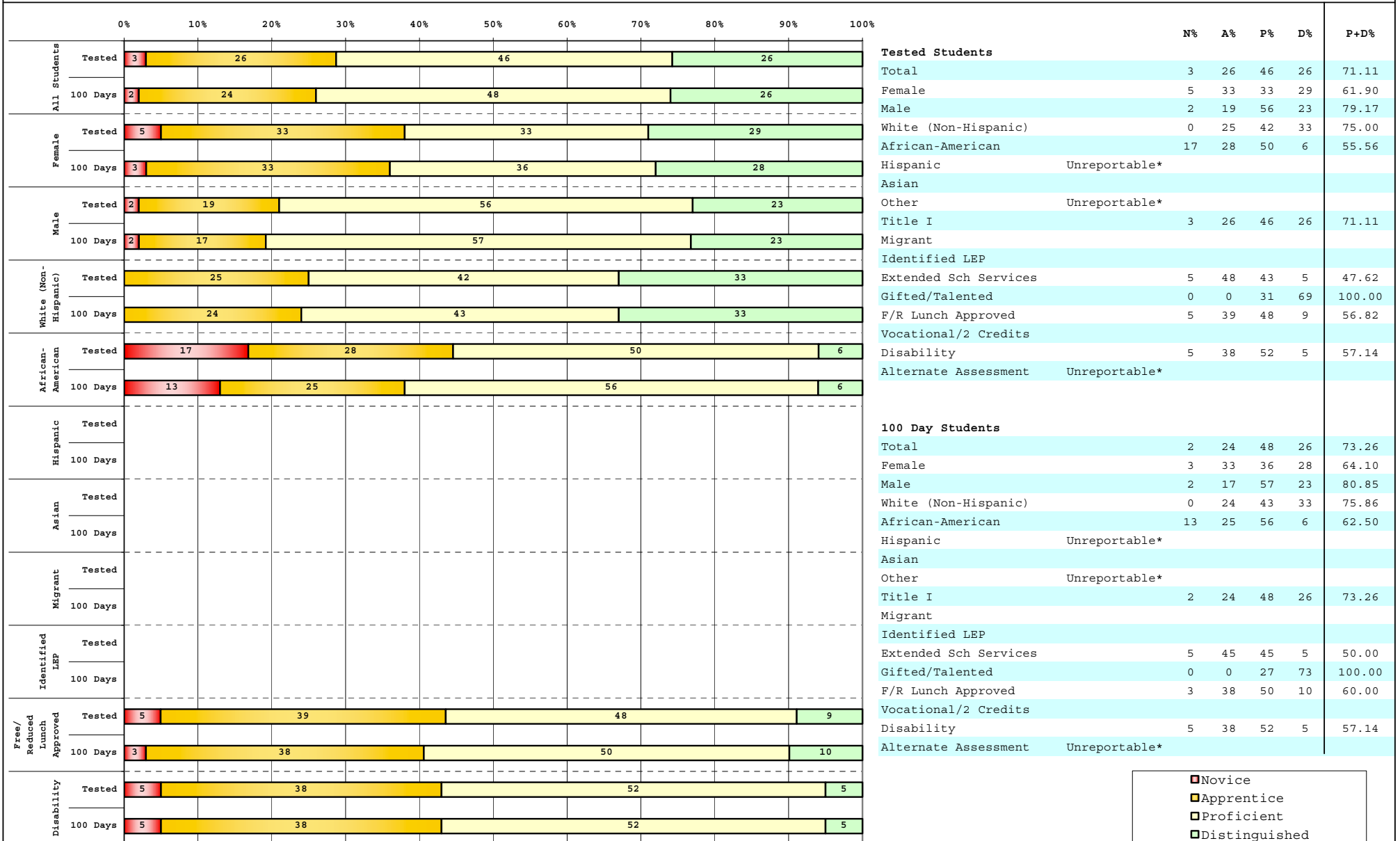


The horizontal bar represents the percent of students scoring at a performance level within a particular year. Percentages may not sum to 100% due to rounding.



2008-2009
INTERIM PERFORMANCE REPORT
SOCIAL STUDIES DISAGGREGATION
Performance Level Percents

School: Squires Elementary School
 District: Fayette County
 Code: 165082
 Grade: 05



Percentage may not sum to 100% due to rounding. 'Unreportable*' indicates subpopulations with fewer than 10 students or subpopulations where all students score at the same performance level.



2008-2009
INTERIM PERFORMANCE REPORT
SOCIAL STUDIES CORE CONTENT

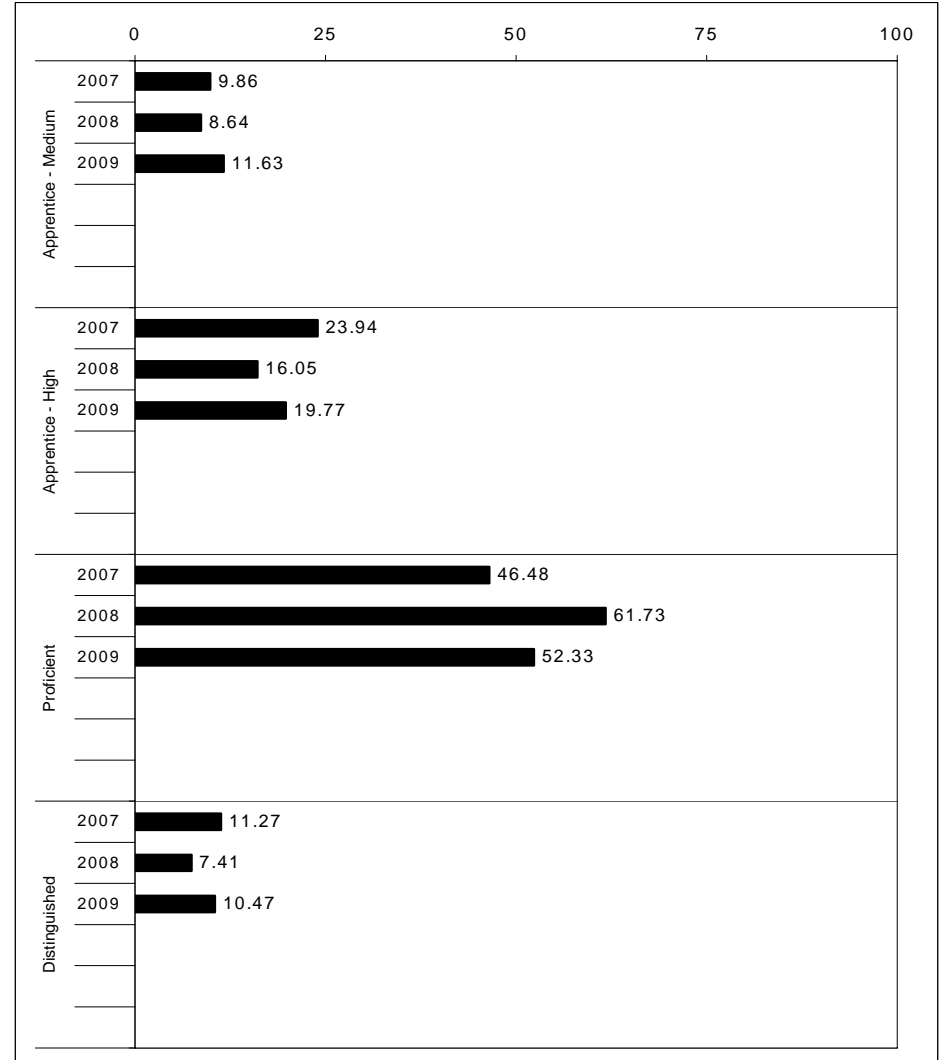
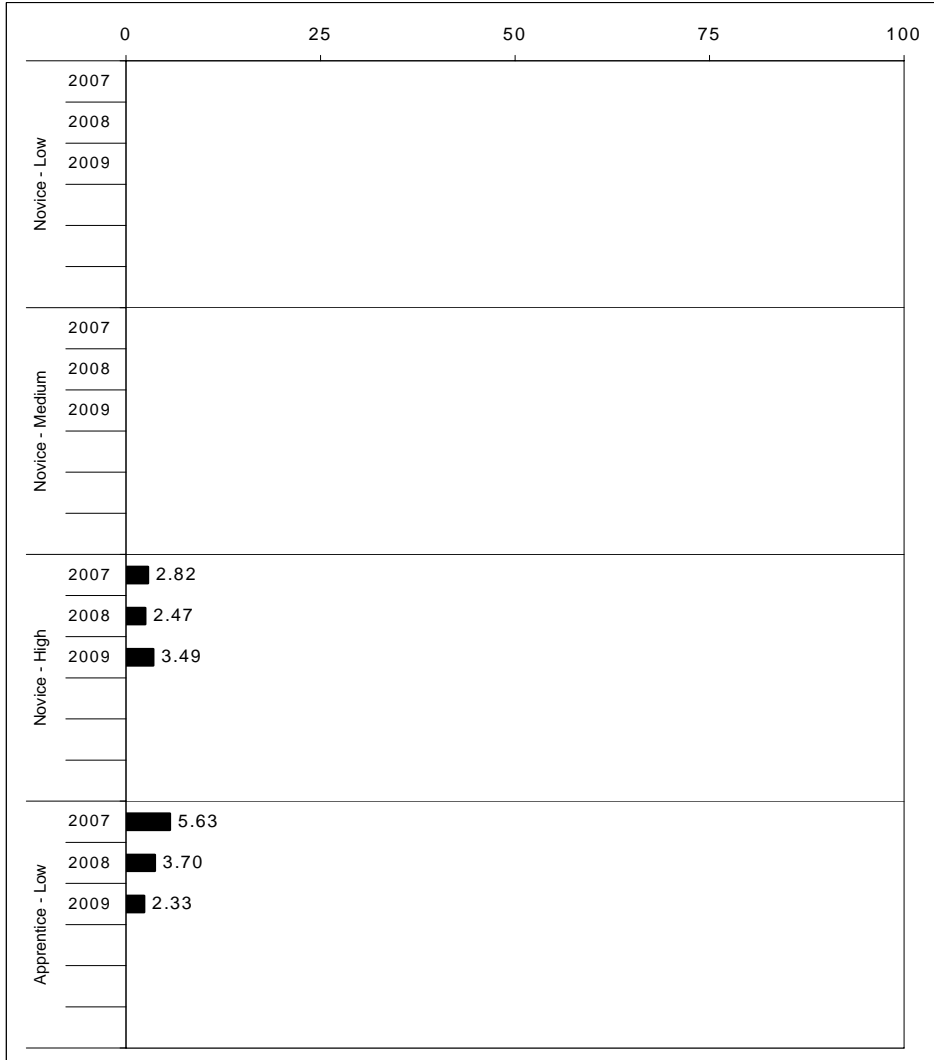
School: Squires Elementary School
 District: Fayette County
 Code: 165082
 Grade: 05

	No. Items	No. Observations	SCHOOL								Std. Err.	No. Observations	STATE								School -State Mean
			B	0	1	2	3	4	Mean	B			0	1	2	3	4	Mean			
OPEN RESPONSE																					
1.x.x - Government & Civics	2	98	0	0	18	45	31	6	2.2	0.1	56,903	0	5	37	45	10	2	1.7	0.5		
2.x.x - Cultures & Societies	1	16	0	0	38	31	19	13	2.1	0.2	8,151	0	4	21	56	15	4	1.9	0.2		
3.x.x - Economics	1	85	0	8	29	34	22	6	1.9	0.1	48,828	0	11	33	41	12	3	1.6	0.3		
4.x.x - Geography	2	31	0	3	23	35	32	6	2.2	0.2	16,077	0	9	32	39	17	3	1.7	0.5		
5.x.x - Historical Perspective	3	110	0	5	23	55	15	3	1.9	0.1	65,353	0	7	35	46	10	2	1.7	0.2		
MULTIPLE CHOICE																					
1.x.x - Government & Civics	14	554	64	37	0				0.64	0.02	317,571	66	34	0				0.66	-0.02		
2.x.x - Cultures & Societies	11	368	74	26	0				0.74	0.02	211,383	70	30	0				0.69	0.05		
3.x.x - Economics	11	438	78	22	0				0.78	0.02	252,215	73	27	0				0.73	0.05		
4.x.x - Geography	16	653	67	33	0				0.67	0.02	374,337	66	34	0				0.66	0.01		
5.x.x - Historical Perspective	27	1,018	73	27	0				0.73	0.01	586,076	69	31	0				0.69	0.04		



2008-2009
INTERIM PERFORMANCE REPORT
WRITING ON-DEMAND TREND DATA
Performance Level Percents

School: Squires Elementary School
 District: Fayette County
 Code: 165082
 Grade: 05

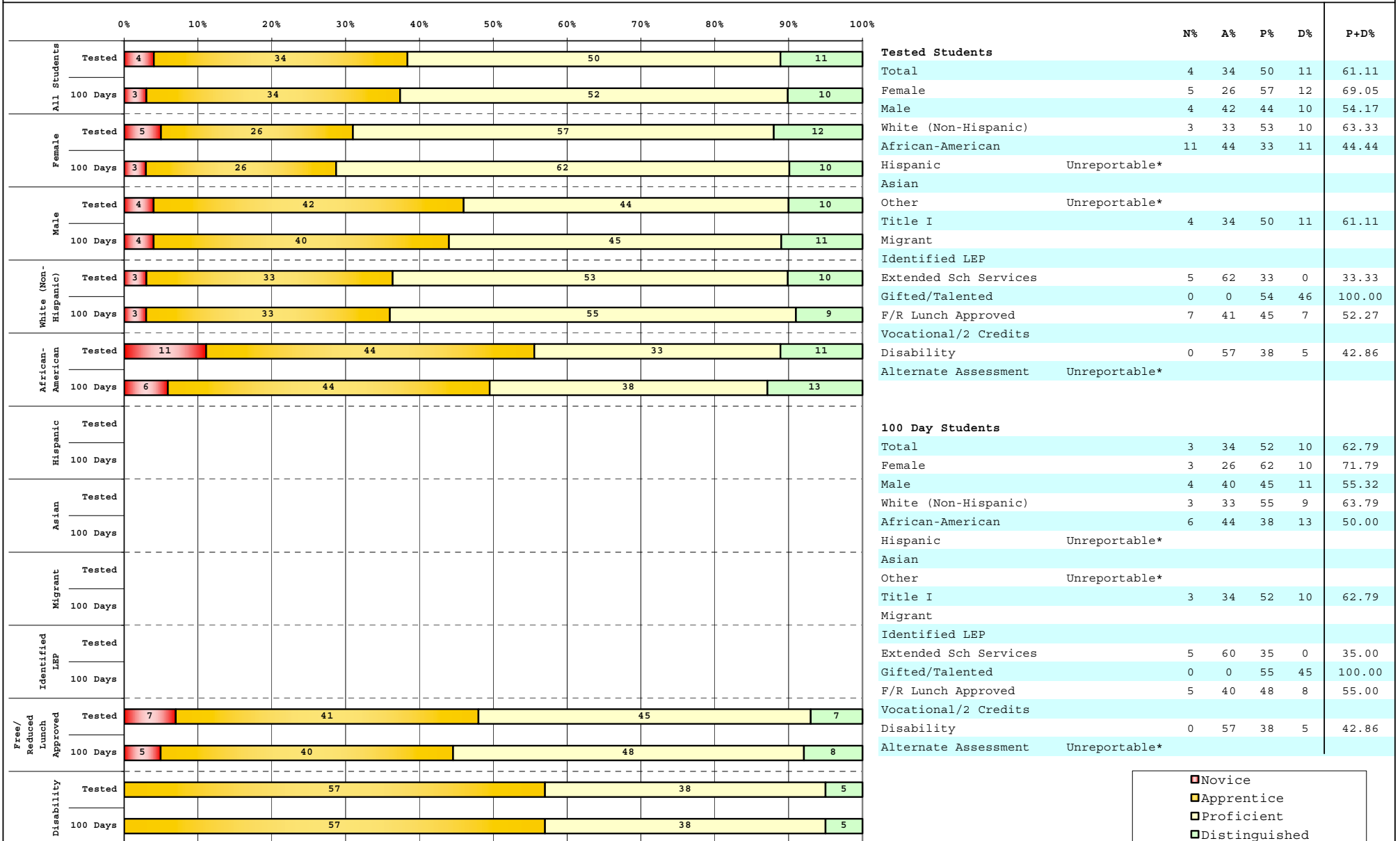


The horizontal bar represents the percent of students scoring at a performance level within a particular year. Percentages may not sum to 100% due to rounding.



**2008-2009
INTERIM PERFORMANCE REPORT
WRITING ON-DEMAND DISAGGREGATION
Performance Level Percents**

School: Squires Elementary School
District: Fayette County
Code: 165082
Grade: 05



■	Novice
■	Apprentice
■	Proficient
■	Distinguished

Percentage may not sum to 100% due to rounding. 'Unreportable*' indicates subpopulations with fewer than 10 students or subpopulations where all students score at the same performance level.



2008-2009
INTERIM PERFORMANCE REPORT
WRITING ON-DEMAND CORE CONTENT

School: Squires Elementary School
 District: Fayette County
 Code: 165082
 Grade: 05

WRITING PROMPT	SCHOOL												STATE												School -State Mean
	No. Observations	Percents											Mean	Percents											
	B	0	1	2	3	4	5	6	7	8		B		0	1	2	3	4	5	6	7	8			
Inform																									
1.X.X - Content	29	0	0	0	3	21	24	24	28	0	0	4.52	0	1	1	9	9	34	18	21	4	2	4.43	0.09	
2.X.X - Structure	29	0	0	0	10	17	34	21	17	0	0	4.17	0	1	2	9	10	35	19	19	3	1	4.33	-0.16	
3.X.X - Convention	29	0	0	0	14	17	31	17	21	0	0	4.14	0	0	0	12	11	34	19	19	3	1	4.38	-0.24	
Narrate for a purpose																									
1.X.X - Content	27	0	0	0	11	7	30	19	26	7	0	4.63	0	1	1	10	9	36	18	21	3	1	4.35	0.28	
2.X.X - Structure	27	0	0	0	11	11	30	15	26	7	0	4.56	0	1	2	10	10	37	17	19	3	1	4.27	0.29	
3.X.X - Convention	27	0	0	0	11	7	37	11	26	7	0	4.56	0	0	0	12	10	36	18	19	3	1	4.33	0.23	
Persuade																									
1.X.X - Content	29	0	0	0	3	0	28	28	34	7	0	5.10	0	1	1	8	8	33	19	21	5	3	4.50	0.60	
2.X.X - Structure	29	0	0	0	0	3	31	31	28	7	0	5.03	0	2	2	9	10	33	19	20	5	2	4.42	0.61	
3.X.X - Convention	29	0	0	0	0	7	31	24	31	7	0	5.00	0	0	0	11	10	32	19	20	5	2	4.50	0.50	

MULTIPLE CHOICE	No. Items	SCHOOL						STATE						School -State Mean
		No. Observations	Percents			Mean	Std. Err.	No. Observations	Percents			Mean		
		Correct	Incorrect	Omit/Mult				Correct	Incorrect	Omit/Mult				
4.x.x - Writing Process	52	1,020	76	25	0	0.75	0.01	585,936	73	27	0	0.73	0.02	
4.10.x - Revising	16	224	71	29	0	0.71	0.03	130,317	66	34	0	0.66	0.05	
4.11.x - Editing	36	796	77	23	0	0.77	0.02	455,619	75	24	0	0.75	0.02	