



Interim Performance Report

In March 2009, the Kentucky General Assembly passed Senate Bill 1 (SB1) that was subsequently signed into law by the Governor. SB1 calls for a significant overhaul of the state's assessment and accountability system. The new assessment system begins in the spring of 2012. The school years of 2008-2009, 2009-2010 and 2010-2011 are described in SB1 as an interim period. This three-year period allows Kentucky to develop the new assessment system and to carry on state and federal testing requirements.

The Interim Performance Report includes the Kentucky Core Content Test (KCCT) in Reading (grades 3-8 and 10), Mathematics (grades 3-8 and 11), Science (grades 4, 7 and 11), Social Studies (grades 5, 8 and 11) and Writing On-Demand (grades 5, 8 and 12). The KCCT is based on the Kentucky Core Content for Assessment (Version 4.1) and contains multiple choice and open response questions. The Writing On-Demand test uses writing prompts that require students to craft a piece of writing in a 60 minute period.

The KCCT is developed under the direction of content advisory committees of Kentucky educators who draft, review and select test questions. All test items are reviewed by a bias review committee to enhance the fairness of items for all Kentucky students.

The KCCT continues to fulfill the requirements of the federal statute known as the No Child Left Behind Act of 2001. A separate accountability report for No Child Left Behind (NCLB) is published by the Kentucky Department of Education.

The Interim Performance Report focuses entirely on the five state-required content areas and provides data for schools or districts. The data in this report is not used directly for state accountability; although, these results can fulfill the requirements of Senate Bill 168 from 2002 and may be used by schools or districts for their own local accountability needs.

Performance standards are based on descriptions of Novice, Apprentice, Proficient and Distinguished (NAPD) student performance levels specific to the content area and grade being assessed. The performance standards, in conjunction with Kentucky's Core Content for Assessment, should allow instruction to better focus on the content area to be taught and on how well students must demonstrate achievement in each content area.

Reporting Changes for 2009

Based on SB1, Kentucky will not be reporting state accountability and academic indices as in the past. The report does have several familiar pages with performance level (NAPD) trend, core content and disaggregation data per content area. Districts and schools will still see distributions of how students scored in the Novice (with sublevels), Apprentice (with sublevels), Proficient and Distinguished performance levels.

Confidentiality Changes

Due to federal regulations around the Family Education Rights and Privacy Act (FERPA), the numbers of students have been removed. Though there is a need to report as much data as possible, there is also a paramount need to maintain the confidential aspects of individual scores. When scores are reported in what is commonly called "small cells" where very few students may be categorized, there is the possibility of revealing individual scores when numbers are reported. Numbers are reported to each district in a confidential report that accompanies the public Interim Performance Report.

2008-2009

INTERIM PERFORMANCE REPORT

School: Sandersville Elementary

District: Fayette County

Code: 165058

Grade: PRIMARY-05

CONTENTS OF THIS REPORT

Introduction	1
Academic Trend Data	
Reading Results	2-8
Mathematics Results	9-15
Science Results	16-18
Social Studies Results	19-21
Writing Results	22-24

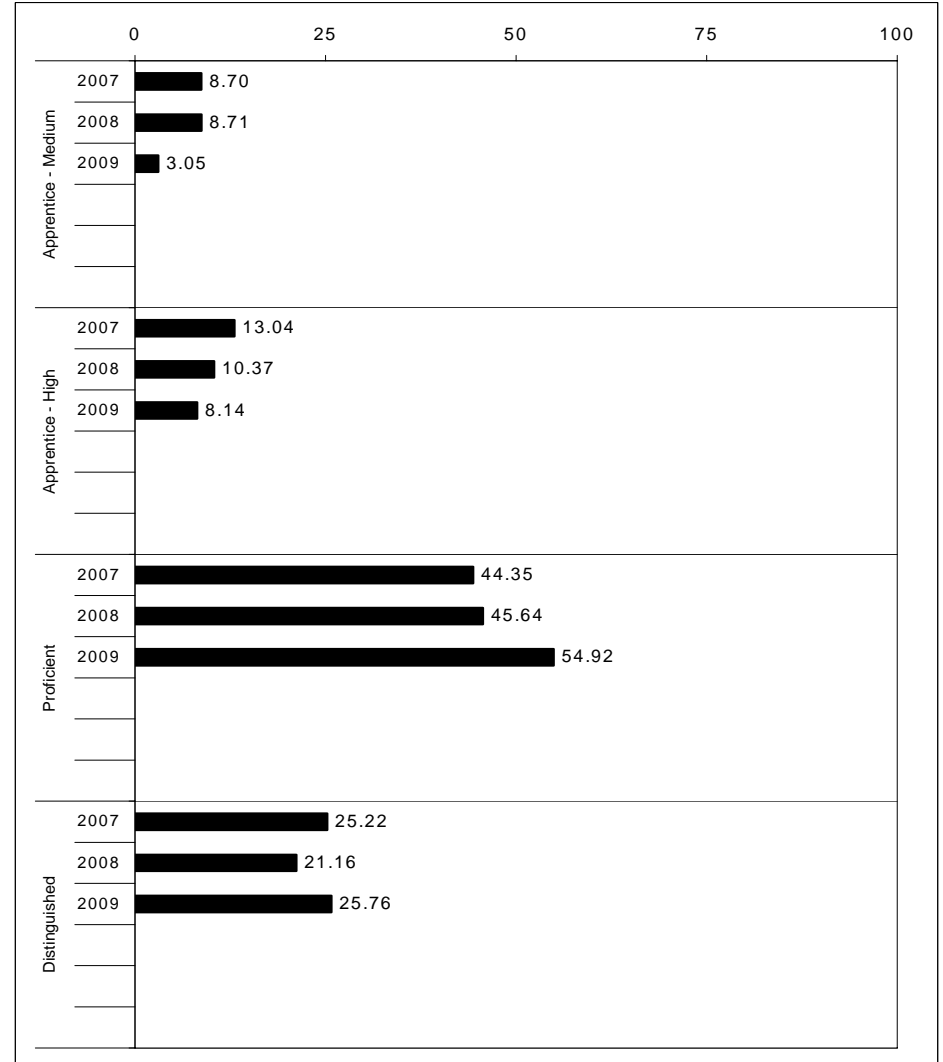
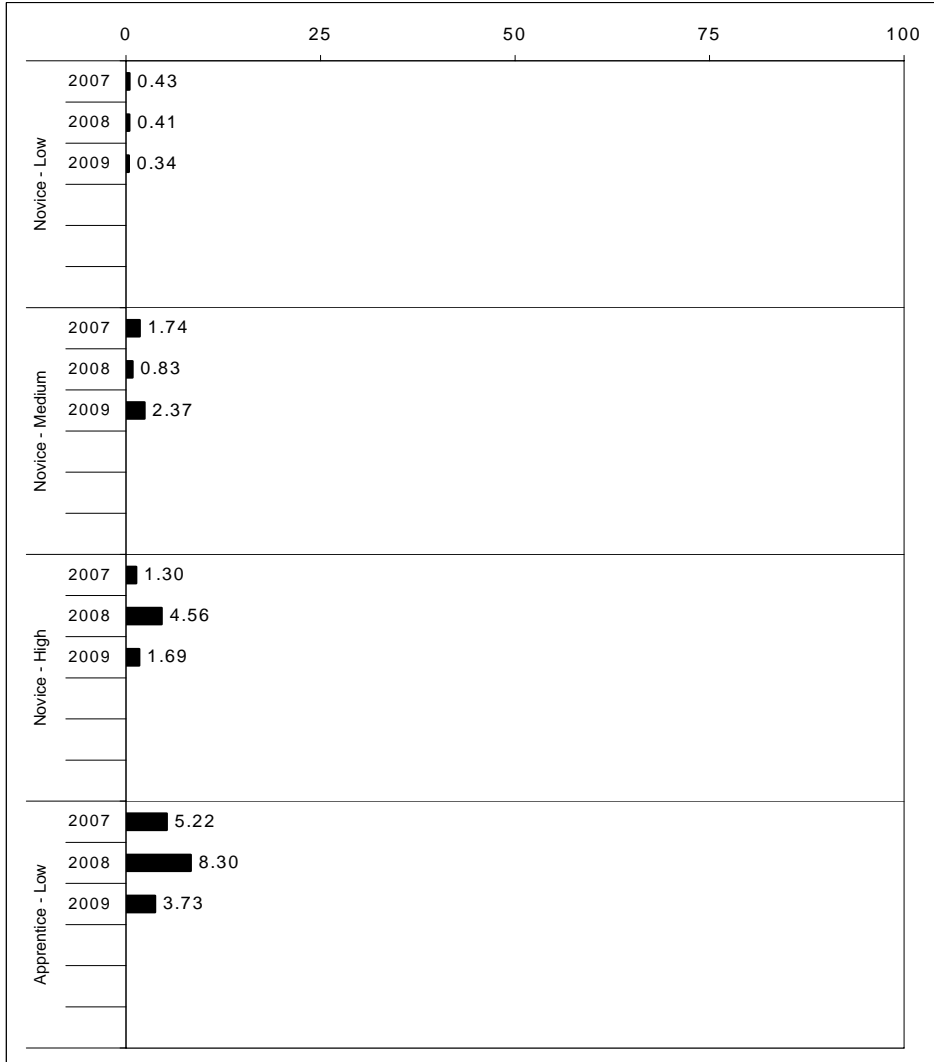
For more information, refer to the 2009 Interim Assessment Interpretative Guide on the Kentucky Department of Education Web site (www.education.ky.gov).





2008-2009
INTERIM PERFORMANCE REPORT
READING TREND DATA
Performance Level Percents

School: Sandersville Elementary
 District: Fayette County
 Code: 165058
 Grade: ELEMENTARY



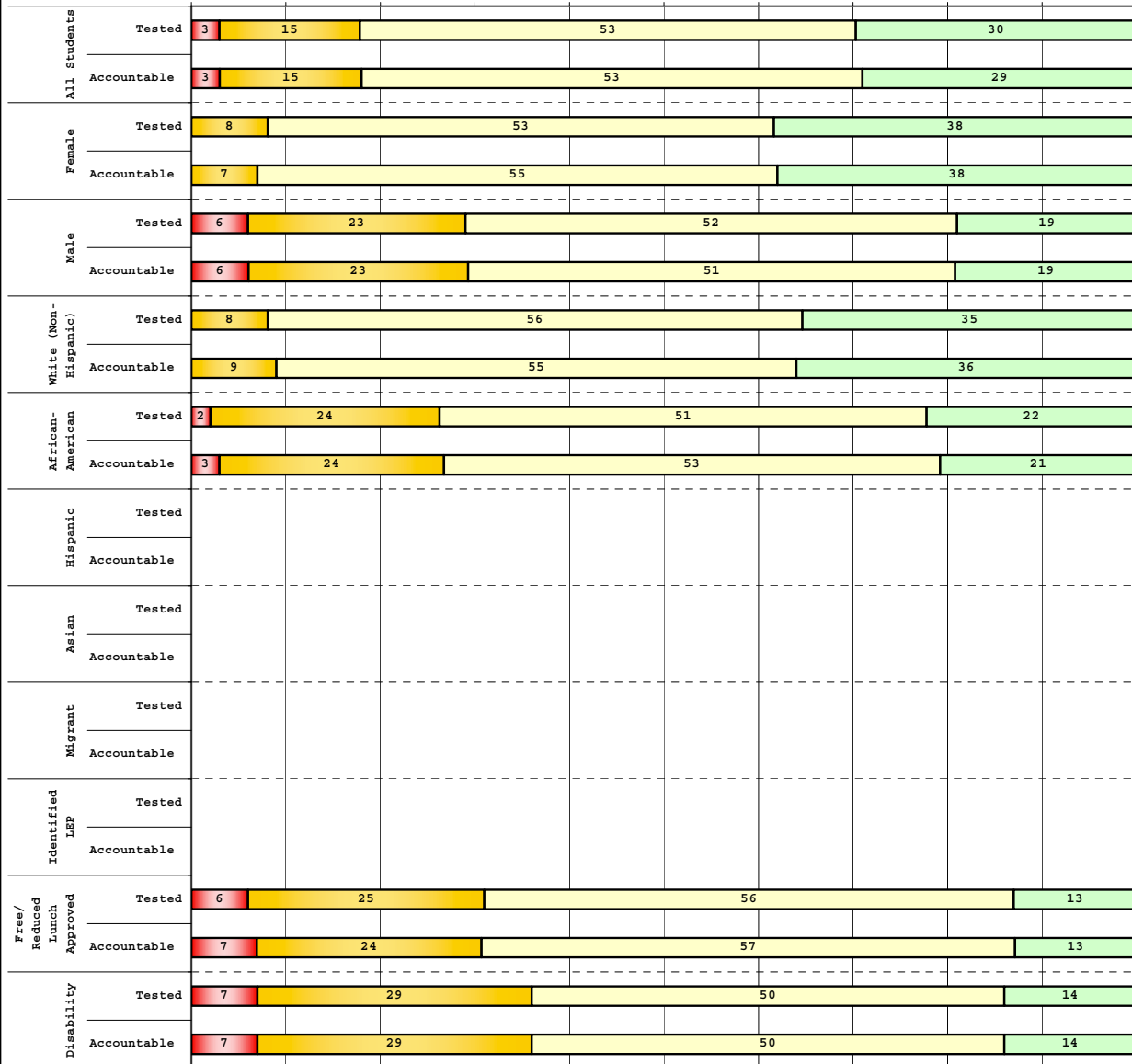
The horizontal bar represents the percent of students scoring at a performance level within a particular year. Percentages may not sum to 100% due to rounding.



**2008-2009
INTERIM PERFORMANCE REPORT
READING DISAGGREGATION
Performance Level Percents**

School: Sandersville Elementary
District: Fayette County
Code: 165058
Grade: 03

0% 10% 20% 30% 40% 50% 60% 70% 80% 90% 100%

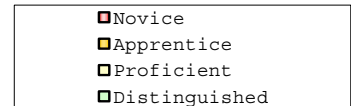


Tested Students

	N%	A%	P%	D%	P+D%
Total	3	15	53	30	82.41
Female	0	8	53	38	91.67
Male	6	23	52	19	70.83
White (Non-Hispanic)	0	8	56	35	91.67
African-American	2	24	51	22	73.17
Hispanic	Unreportable*				
Asian	Unreportable*				
Other	0	20	40	40	80.00
Title I	Unreportable*				
Migrant	Unreportable*				
Identified LEP	Unreportable*				
Extended Sch Services	0	38	54	8	61.54
Gifted/Talented	0	5	23	73	95.45
F/R Lunch Approved	6	25	56	13	68.75
Vocational/2 Credits	Unreportable*				
Disability	7	29	50	14	64.29
Alternate Assessment	Unreportable*				

NCLB Accountable Students

	N%	A%	P%	D%	P+D%
Total	3	15	53	29	82.35
Female	0	7	55	38	92.73
Male	6	23	51	19	70.21
White (Non-Hispanic)	0	9	55	36	91.49
African-American	3	24	53	21	73.68
Hispanic	Unreportable*				
Asian	Unreportable*				
Other	Unreportable*				
Title I	Unreportable*				
Migrant	Unreportable*				
Identified LEP	Unreportable*				
Extended Sch Services	0	38	54	8	61.54
Gifted/Talented	0	5	24	71	95.24
F/R Lunch Approved	7	24	57	13	69.57
Vocational/2 Credits	Unreportable*				
Disability	7	29	50	14	64.29
Alternate Assessment	Unreportable*				



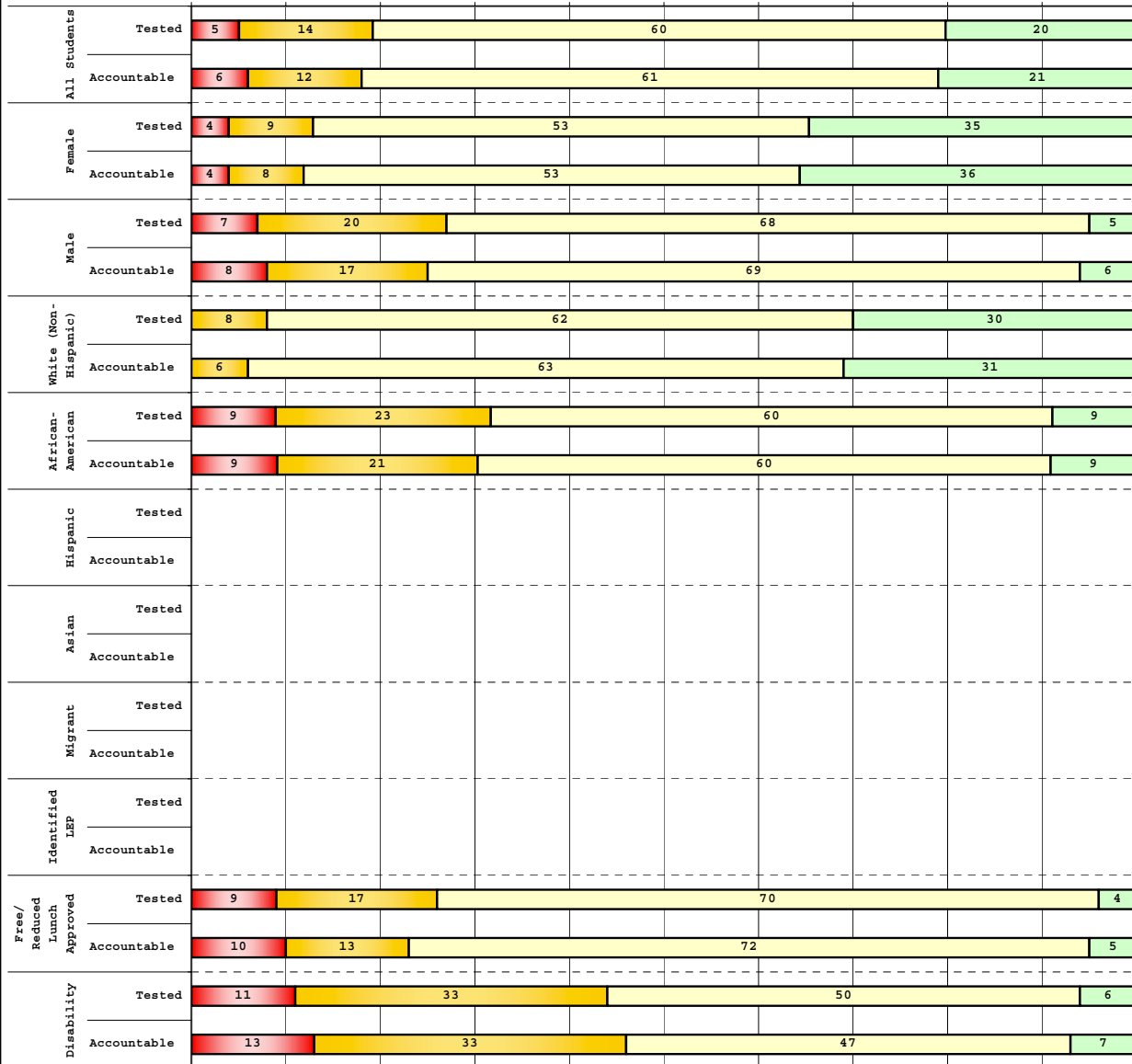
Percentage may not sum to 100% due to rounding. 'Unreportable*' indicates subpopulations with fewer than 10 students or subpopulations where all students score at the same performance level.



**2008-2009
INTERIM PERFORMANCE REPORT
READING DISAGGREGATION
Performance Level Percents**

School: Sandersville Elementary
District: Fayette County
Code: 165058
Grade: 04

0% 10% 20% 30% 40% 50% 60% 70% 80% 90% 100%



	N%	A%	P%	D%	P+D%
Tested Students					
Total	5	14	60	20	80.53
Female	4	9	53	35	87.72
Male	7	20	68	5	73.21
White (Non-Hispanic)	0	8	62	30	92.45
African-American	9	23	60	9	68.09
Hispanic	Unreportable*				
Asian	Unreportable*				
Other	Unreportable*				
Title I					
Migrant	Unreportable*				
Identified LEP	Unreportable*				
Extended Sch Services	18	35	47	0	47.06
Gifted/Talented	0	6	29	65	94.12
F/R Lunch Approved	9	17	70	4	74.47
Vocational/2 Credits					
Disability	11	33	50	6	55.56
Alternate Assessment					
NCLB Accountable Students					
Total	6	12	61	21	81.90
Female	4	8	53	36	88.68
Male	8	17	69	6	75.00
White (Non-Hispanic)	0	6	63	31	93.75
African-American	9	21	60	9	69.77
Hispanic	Unreportable*				
Asian	Unreportable*				
Other	Unreportable*				
Title I					
Migrant	Unreportable*				
Identified LEP	Unreportable*				
Extended Sch Services	18	35	47	0	47.06
Gifted/Talented	0	6	29	65	94.12
F/R Lunch Approved	10	13	72	5	76.92
Vocational/2 Credits					
Disability	13	33	47	7	53.33
Alternate Assessment					

■ Novice
■ Apprentice
■ Proficient
■ Distinguished

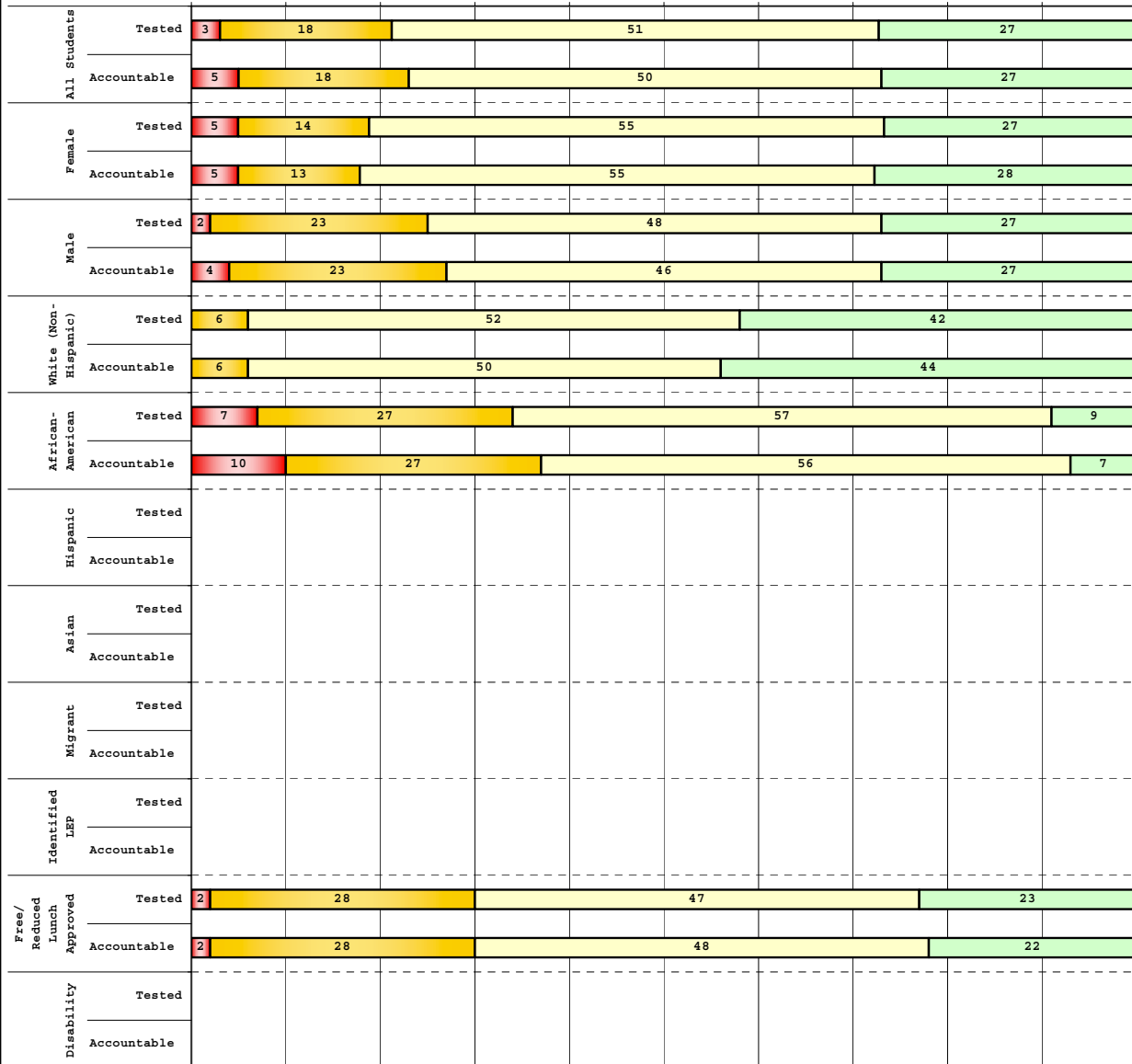
Percentage may not sum to 100% due to rounding. 'Unreportable*' indicates subpopulations with fewer than 10 students or subpopulations where all students score at the same performance level.



**2008-2009
INTERIM PERFORMANCE REPORT
READING DISAGGREGATION
Performance Level Percents**

School: Sandersville Elementary
District: Fayette County
Code: 165058
Grade: 05

0% 10% 20% 30% 40% 50% 60% 70% 80% 90% 100%

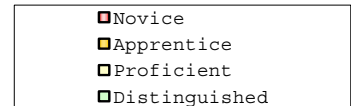


Tested Students

	N%	A%	P%	D%	P+D%
Total	3	18	51	27	78.26
Female	5	14	55	27	81.82
Male	2	23	48	27	75.00
White (Non-Hispanic)	0	6	52	42	93.94
African-American	7	27	57	9	65.91
Hispanic	Unreportable*				
Asian	Unreportable*				
Other	Unreportable*				
Title I	Unreportable*				
Migrant	Unreportable*				
Identified LEP	Unreportable*				
Extended Sch Services	23	8	62	8	69.23
Gifted/Talented	Unreportable*				
F/R Lunch Approved	2	28	47	23	69.81
Vocational/2 Credits	Unreportable*				
Disability	Unreportable*				
Alternate Assessment	Unreportable*				

NCLB Accountable Students

	N%	A%	P%	D%	P+D%
Total	5	18	50	27	77.27
Female	5	13	55	28	82.50
Male	4	23	46	27	72.92
White (Non-Hispanic)	0	6	50	44	93.75
African-American	10	27	56	7	63.41
Hispanic	Unreportable*				
Asian	Unreportable*				
Other	Unreportable*				
Title I	Unreportable*				
Migrant	Unreportable*				
Identified LEP	Unreportable*				
Extended Sch Services	23	8	62	8	69.23
Gifted/Talented	Unreportable*				
F/R Lunch Approved	2	28	48	22	70.00
Vocational/2 Credits	Unreportable*				
Disability	Unreportable*				
Alternate Assessment	Unreportable*				



Percentage may not sum to 100% due to rounding. 'Unreportable*' indicates subpopulations with fewer than 10 students or subpopulations where all students score at the same performance level.



2008-2009
INTERIM PERFORMANCE REPORT
READING CORE CONTENT

School: Sandersville Elementary
 District: Fayette County
 Code: 165058
 Grade: 03

	No. Items	No. Observations	SCHOOL							Mean	Std. Err.	No. Observations	STATE							Mean	School -State Mean
			B	0	1	2	3	4	B				0	1	2	3	4				
OPEN RESPONSE																					
2.0.x - Developing Understanding	2	204	0	2	22	44	24	8	2.1	0.1	100,212	0	10	30	44	14	2	1.7	0.4		
3.0.x - Interpreting Text	2	204	0	2	22	44	24	8	2.1	0.1	100,212	0	10	30	44	14	2	1.7	0.4		
MULTIPLE CHOICE																					
1.0.x - Forming a Foundation	32	803	87	12	0				0.87	0.01	392,589	83	17	0				0.83	0.04		
2.0.x - Developing Understanding	89	2,031	80	19	1				0.80	0.01	993,477	80	20	0				0.80	0.00		
3.0.x - Interpreting Text	31	942	79	21	0				0.79	0.01	468,115	77	23	0				0.77	0.02		
5.0.x - Critical Stance	15	425	84	16	0				0.84	0.02	208,359	79	21	0				0.79	0.05		



2008-2009
INTERIM PERFORMANCE REPORT
READING CORE CONTENT

School: Sandersville Elementary
 District: Fayette County
 Code: 165058
 Grade: 04

	No. Items	No. Observations	SCHOOL								Std. Err.	No. Observations	STATE								School -State Mean
			B	0	1	2	3	4	Mean	B			0	1	2	3	4	Mean			
OPEN RESPONSE																					
2.0.x - Developing Understanding	5	175	0	3	17	49	27	4	2.1	0.1	81,849	0	3	24	52	18	3	1.9	0.2		
3.0.x - Interpreting Text	6	281	0	4	15	46	28	7	2.2	0.1	131,199	0	4	22	45	23	5	2.0	0.2		
MULTIPLE CHOICE																					
1.0.x - Forming a Foundation	34	859	72	28	0				0.72	0.02	401,452	72	28	0				0.71	0.01		
2.0.x - Developing Understanding	76	1,871	73	27	0				0.73	0.01	868,422	73	27	0				0.73	0.00		
3.0.x - Interpreting Text	29	585	80	20	0				0.80	0.02	278,648	79	21	0				0.79	0.01		
5.0.x - Critical Stance	9	331	77	23	0				0.77	0.02	155,704	74	26	0				0.74	0.03		



2008-2009
INTERIM PERFORMANCE REPORT
READING CORE CONTENT

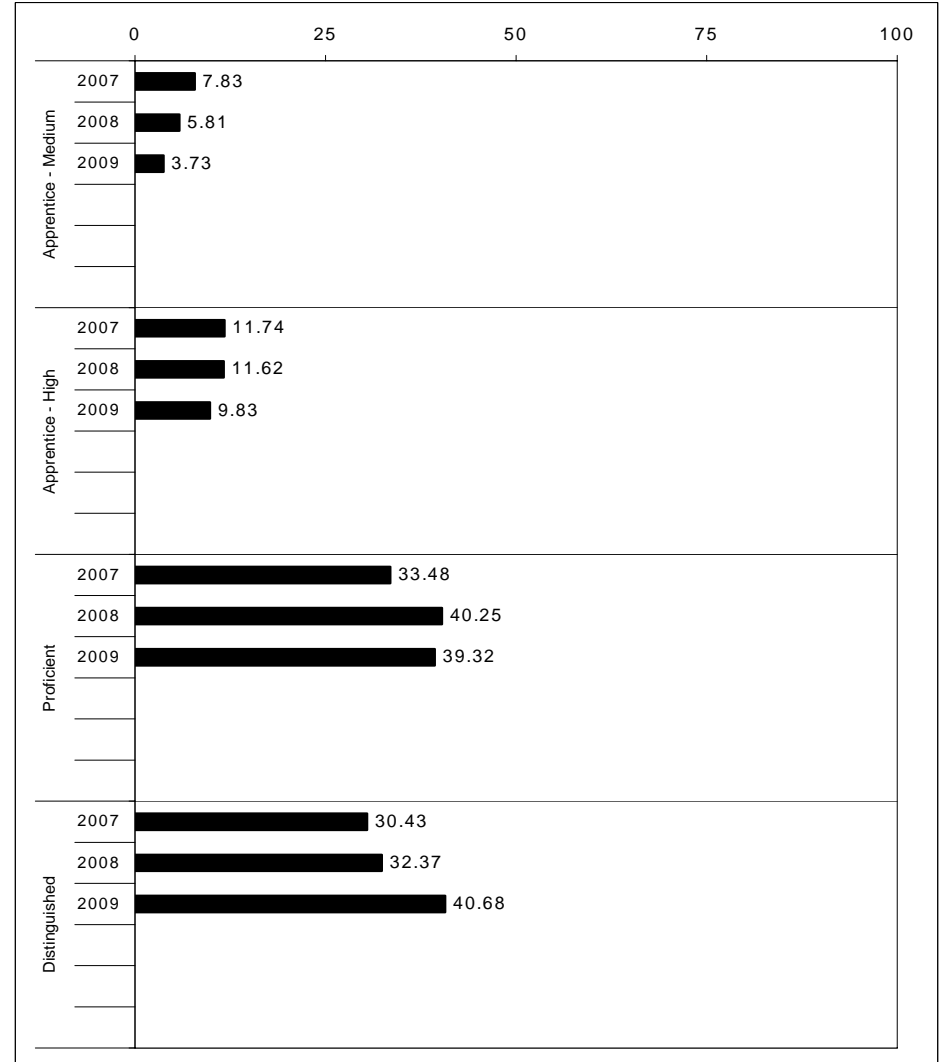
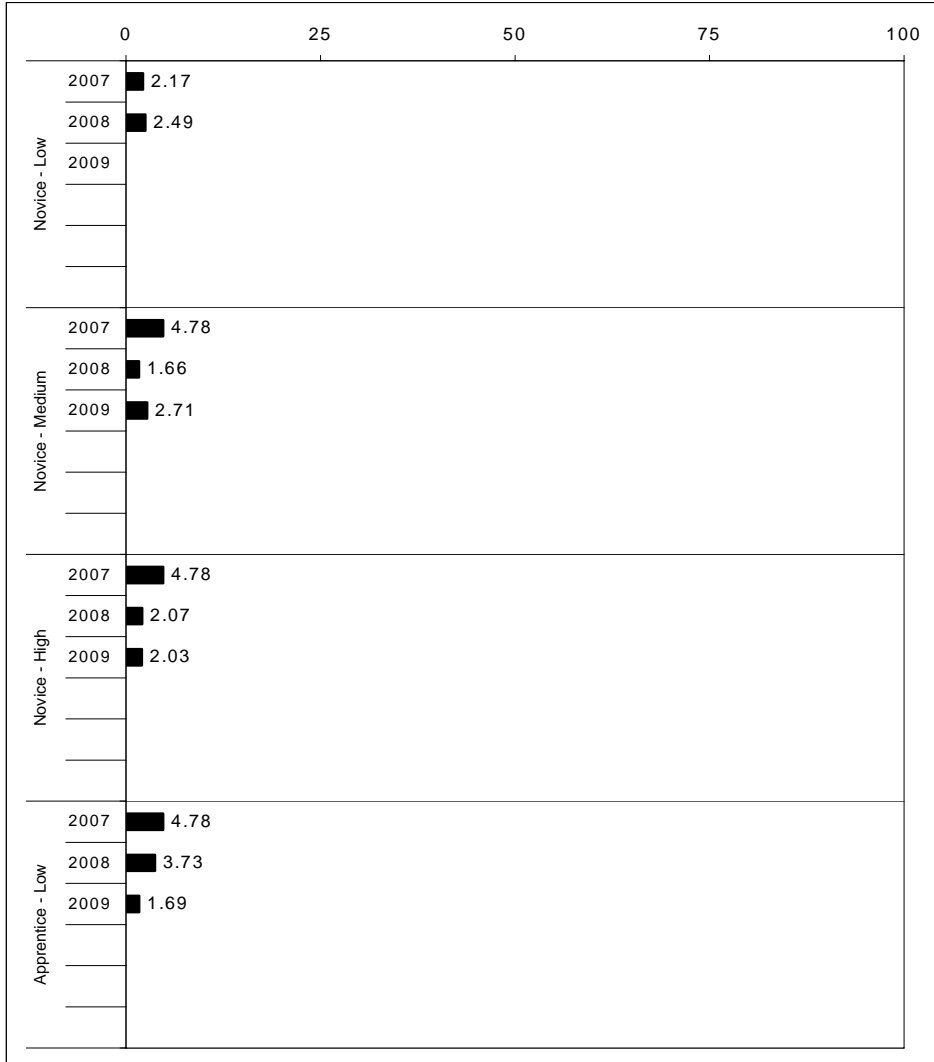
School: Sandersville Elementary
 District: Fayette County
 Code: 165058
 Grade: 05

	No. Items	No. Observations	SCHOOL								Mean	Std. Err.	No. Observations	STATE								Mean	School -State Mean
			B	0	1	2	3	4	B	0				1	2	3	4						
OPEN RESPONSE																							
2.0.x - Developing Understanding	6	163	0	4	10	47	26	12	2.3	0.1	89,507	0	5	23	48	20	5	2.0	0.3				
3.0.x - Interpreting Text	6	231	0	3	8	48	29	12	2.4	0.1	130,403	0	5	21	50	19	4	2.0	0.4				
MULTIPLE CHOICE																							
1.0.x - Forming a Foundation	28	481	72	27	0				0.72	0.02	268,187	74	26	0				0.74	-0.02				
2.0.x - Developing Understanding	71	1,471	77	23	0				0.77	0.01	823,068	80	20	0				0.80	-0.03				
3.0.x - Interpreting Text	27	621	79	21	0				0.79	0.02	341,653	81	19	0				0.81	-0.02				
5.0.x - Critical Stance	17	549	80	20	0				0.80	0.02	300,671	75	25	0				0.75	0.05				



2008-2009
INTERIM PERFORMANCE REPORT
MATHEMATICS TREND DATA
Performance Level Percents

School: Sandersville Elementary
 District: Fayette County
 Code: 165058
 Grade: ELEMENTARY



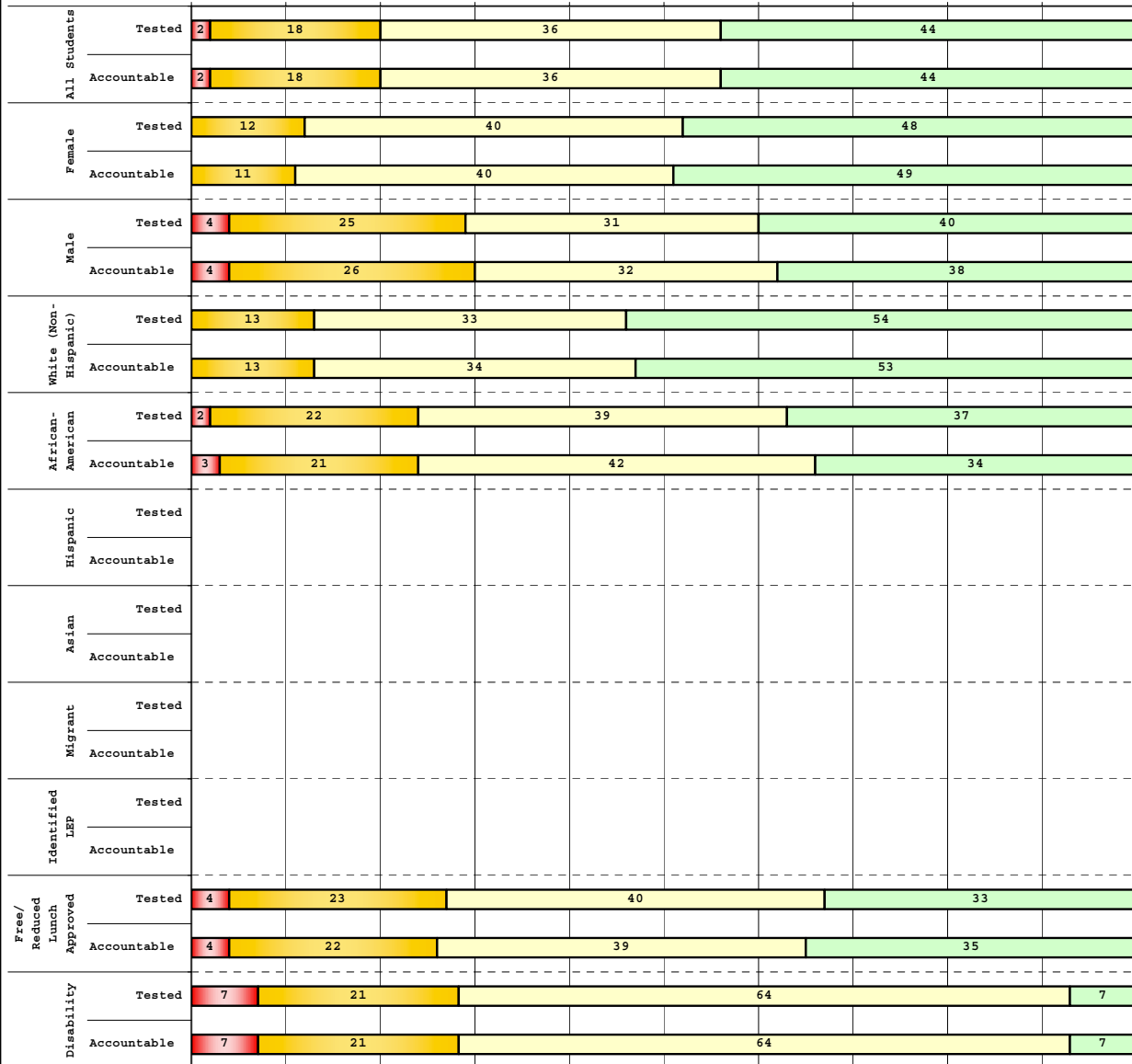
The horizontal bar represents the percent of students scoring at a performance level within a particular year. Percentages may not sum to 100% due to rounding.



**2008-2009
INTERIM PERFORMANCE REPORT
MATHEMATICS DISAGGREGATION
Performance Level Percents**

School: Sandersville Elementary
District: Fayette County
Code: 165058
Grade: 03

0% 10% 20% 30% 40% 50% 60% 70% 80% 90% 100%

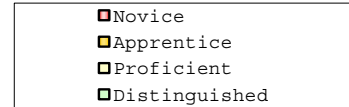


Tested Students

	N%	A%	P%	D%	P+D%
Total	2	18	36	44	80.56
Female	0	12	40	48	88.33
Male	4	25	31	40	70.83
White (Non-Hispanic)	0	13	33	54	87.50
African-American	2	22	39	37	75.61
Hispanic	Unreportable*				
Asian	Unreportable*				
Other	0	30	20	50	70.00
Title I	Unreportable*				
Migrant	Unreportable*				
Identified LEP	Unreportable*				
Extended Sch Services	0	31	62	8	69.23
Gifted/Talented	0	0	18	82	100.00
F/R Lunch Approved	4	23	40	33	72.92
Vocational/2 Credits	Unreportable*				
Disability	7	21	64	7	71.43
Alternate Assessment	Unreportable*				

NCLB Accountable Students

	N%	A%	P%	D%	P+D%
Total	2	18	36	44	80.39
Female	0	11	40	49	89.09
Male	4	26	32	38	70.21
White (Non-Hispanic)	0	13	34	53	87.23
African-American	3	21	42	34	76.32
Hispanic	Unreportable*				
Asian	Unreportable*				
Other	Unreportable*				
Title I	Unreportable*				
Migrant	Unreportable*				
Identified LEP	Unreportable*				
Extended Sch Services	0	31	62	8	69.23
Gifted/Talented	0	0	19	81	100.00
F/R Lunch Approved	4	22	39	35	73.91
Vocational/2 Credits	Unreportable*				
Disability	7	21	64	7	71.43
Alternate Assessment	Unreportable*				



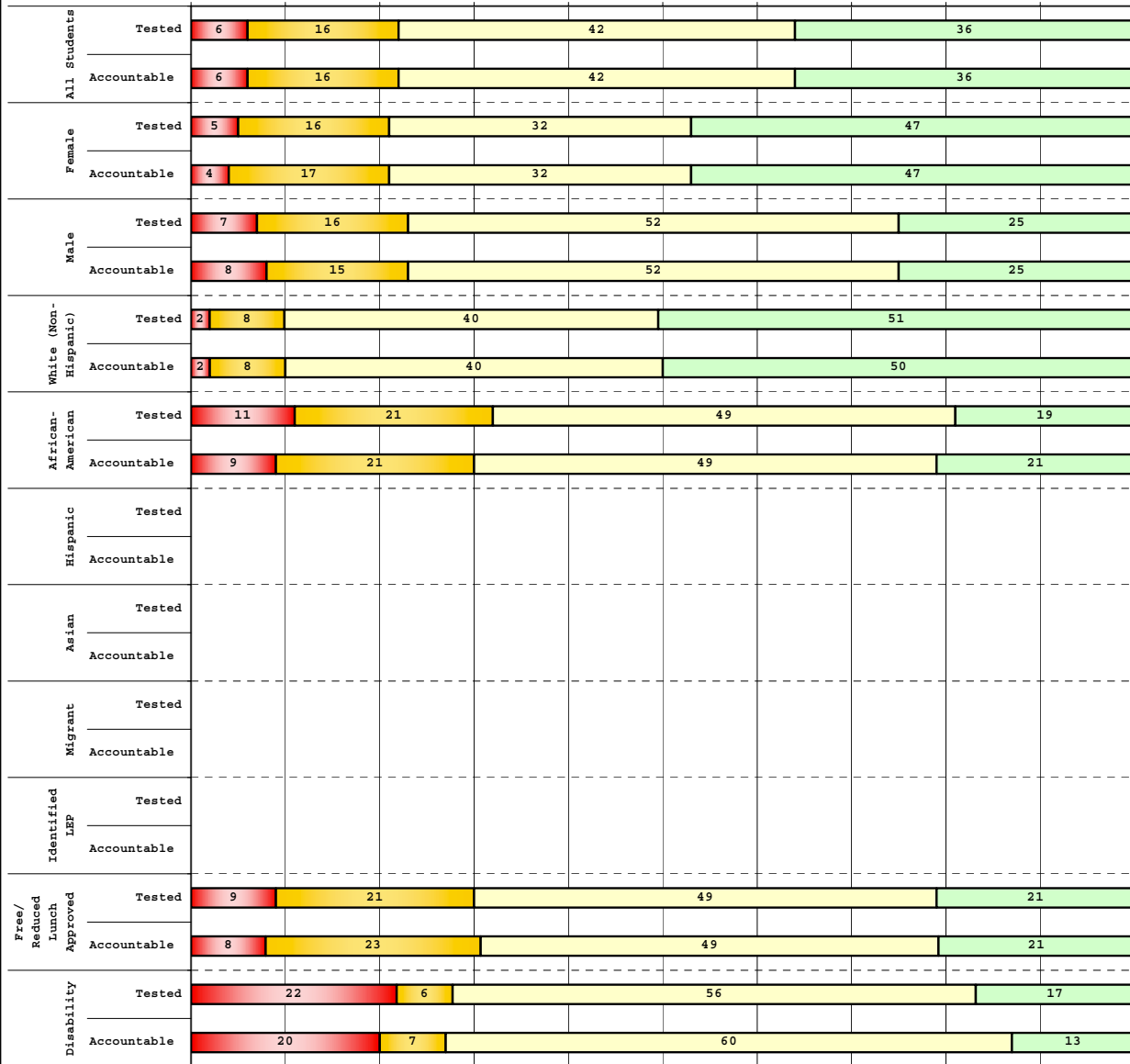
Percentage may not sum to 100% due to rounding. 'Unreportable*' indicates subpopulations with fewer than 10 students or subpopulations where all students score at the same performance level.



2008-2009
INTERIM PERFORMANCE REPORT
MATHEMATICS DISAGGREGATION
Performance Level Percents

School: Sandersville Elementary
 District: Fayette County
 Code: 165058
 Grade: 04

0% 10% 20% 30% 40% 50% 60% 70% 80% 90% 100%

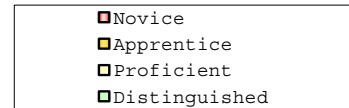


Tested Students

	N%	A%	P%	D%	P+D%
Total	6	16	42	36	77.88
Female	5	16	32	47	78.95
Male	7	16	52	25	76.79
White (Non-Hispanic)	2	8	40	51	90.57
African-American	11	21	49	19	68.09
Hispanic	Unreportable*				
Asian	Unreportable*				
Other	Unreportable*				
Title I					
Migrant	Unreportable*				
Identified LEP	Unreportable*				
Extended Sch Services	24	41	35	0	35.29
Gifted/Talented	0	0	6	94	100.00
F/R Lunch Approved	9	21	49	21	70.21
Vocational/2 Credits					
Disability	22	6	56	17	72.22
Alternate Assessment					

NCLB Accountable Students

	N%	A%	P%	D%	P+D%
Total	6	16	42	36	78.10
Female	4	17	32	47	79.25
Male	8	15	52	25	76.92
White (Non-Hispanic)	2	8	40	50	89.58
African-American	9	21	49	21	69.77
Hispanic	Unreportable*				
Asian	Unreportable*				
Other	Unreportable*				
Title I					
Migrant	Unreportable*				
Identified LEP	Unreportable*				
Extended Sch Services	18	41	41	0	41.18
Gifted/Talented	0	0	6	94	100.00
F/R Lunch Approved	8	23	49	21	69.23
Vocational/2 Credits					
Disability	20	7	60	13	73.33
Alternate Assessment					



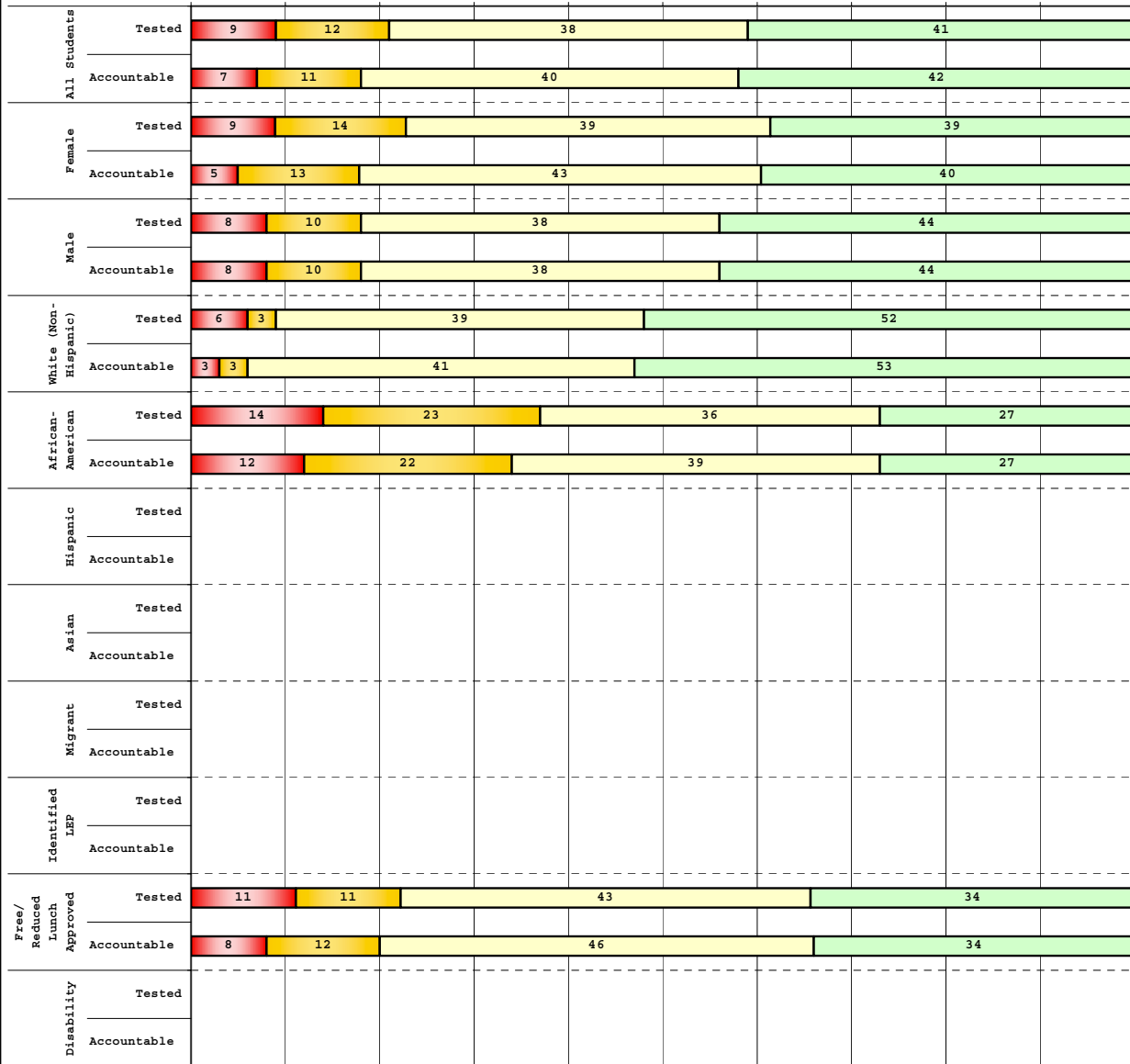
Percentage may not sum to 100% due to rounding. 'Unreportable*' indicates subpopulations with fewer than 10 students or subpopulations where all students score at the same performance level.



2008-2009
INTERIM PERFORMANCE REPORT
MATHEMATICS DISAGGREGATION
Performance Level Percents

School: Sandersville Elementary
 District: Fayette County
 Code: 165058
 Grade: 05

0% 10% 20% 30% 40% 50% 60% 70% 80% 90% 100%

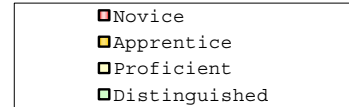


Tested Students

	N%	A%	P%	D%	P+D%
Total	9	12	38	41	79.35
Female	9	14	39	39	77.27
Male	8	10	38	44	81.25
White (Non-Hispanic)	6	3	39	52	90.91
African-American	14	23	36	27	63.64
Hispanic	Unreportable*				
Asian	Unreportable*				
Other	Unreportable*				
Title I					
Migrant	Unreportable*				
Identified LEP	Unreportable*				
Extended Sch Services	15	23	31	31	61.54
Gifted/Talented	Unreportable*				
F/R Lunch Approved	11	11	43	34	77.36
Vocational/2 Credits					
Disability	Unreportable*				
Alternate Assessment					

NCLB Accountable Students

	N%	A%	P%	D%	P+D%
Total	7	11	40	42	81.82
Female	5	13	43	40	82.50
Male	8	10	38	44	81.25
White (Non-Hispanic)	3	3	41	53	93.75
African-American	12	22	39	27	65.85
Hispanic	Unreportable*				
Asian	Unreportable*				
Other	Unreportable*				
Title I					
Migrant	Unreportable*				
Identified LEP	Unreportable*				
Extended Sch Services	15	23	31	31	61.54
Gifted/Talented	Unreportable*				
F/R Lunch Approved	8	12	46	34	80.00
Vocational/2 Credits					
Disability	Unreportable*				
Alternate Assessment					



Percentage may not sum to 100% due to rounding. 'Unreportable*' indicates subpopulations with fewer than 10 students or subpopulations where all students score at the same performance level.



2008-2009
INTERIM PERFORMANCE REPORT
MATHEMATICS CORE CONTENT

School: Sandersville Elementary
 District: Fayette County
 Code: 165058
 Grade: 03

	No. Items	No. Observations	SCHOOL								Std. Err.	No. Observations	STATE								School -State Mean
			B	0	1	2	3	4	Mean	B			0	1	2	3	4	Mean			
OPEN RESPONSE																					
1.x.x - Number Prop Oper	5	258	0	14	31	33	12	10	1.7	0.1	125,243	0	21	35	26	10	8	1.5	0.2		
2.x.x - Measurement	1	18	0	6	11	17	6	61	3.1	0.3	8,325	0	25	5	30	14	25	2.1	1.0		
3.x.x - Geometry	2	33	0	3	18	45	15	18	2.3	0.2	16,777	0	8	24	35	13	20	2.1	0.2		
4.x.x - Data Analysis & Probabilit	1	102	1	1	11	14	22	52	3.1	0.1	50,106	0	9	13	19	27	32	2.6	0.5		
5.x.x - Algebraic Thinking	2	117	1	1	13	12	21	52	3.1	0.1	58,404	0	9	14	19	28	31	2.6	0.5		
MULTIPLE CHOICE																					
1.x.x - Number Prop Oper	32	1,646	77	23	0			0.77	0.01	810,106	74	26	0			0.74	0.03				
2.x.x - Measurement	7	375	81	18	1			0.81	0.02	183,647	81	18	0			0.81	0.00				
3.x.x - Geometry	18	816	85	14	0			0.85	0.01	400,848	85	15	0			0.85	0.00				
4.x.x - Data Analysis & Probabilit	8	393	73	27	0			0.73	0.02	192,126	69	31	0			0.69	0.04				
5.x.x - Algebraic Thinking	11	442	79	20	1			0.79	0.02	217,089	78	22	0			0.78	0.01				



2008-2009
INTERIM PERFORMANCE REPORT
MATHEMATICS CORE CONTENT

School: Sandersville Elementary
 District: Fayette County
 Code: 165058
 Grade: 04

	No. Items	No. Observations	SCHOOL								STATE								School -State Mean
			B	0	1	2	3	4	Mean	Std. Err.	No. Observations	B	0	1	2	3	4	Mean	
OPEN RESPONSE																			
1.x.x - Number Prop Oper	4	161	0	8	30	29	17	16	2.0	0.1	73,656	0	17	24	29	19	12	1.9	0.1
2.x.x - Measurement	1	19	0	32	21	11	11	26	1.8	0.3	8,195	0	43	13	10	20	13	1.5	0.3
3.x.x - Geometry	2	122	0	8	23	20	16	32	2.4	0.1	57,352	0	11	20	17	19	33	2.4	0.0
4.x.x - Data Analysis & Probabilit	1	17	0	6	24	24	41	6	2.2	0.2	8,152	0	5	36	29	23	6	1.9	0.3
5.x.x - Algebraic Thinking	2	120	0	2	32	29	27	11	2.1	0.1	57,508	0	5	27	32	25	11	2.1	0.0
MULTIPLE CHOICE																			
1.x.x - Number Prop Oper	31	1,410	71	29	0				0.71	0.01	664,194	67	33	0				0.67	0.04
2.x.x - Measurement	7	302	64	36	0				0.64	0.03	139,170	62	38	0				0.62	0.02
3.x.x - Geometry	14	599	80	20	0				0.79	0.02	278,460	77	23	0				0.77	0.02
4.x.x - Data Analysis & Probabilit	12	644	74	26	0				0.74	0.02	303,394	71	29	0				0.71	0.03
5.x.x - Algebraic Thinking	11	544	71	28	1				0.71	0.02	253,829	69	31	0				0.69	0.02



2008-2009
INTERIM PERFORMANCE REPORT
MATHEMATICS CORE CONTENT

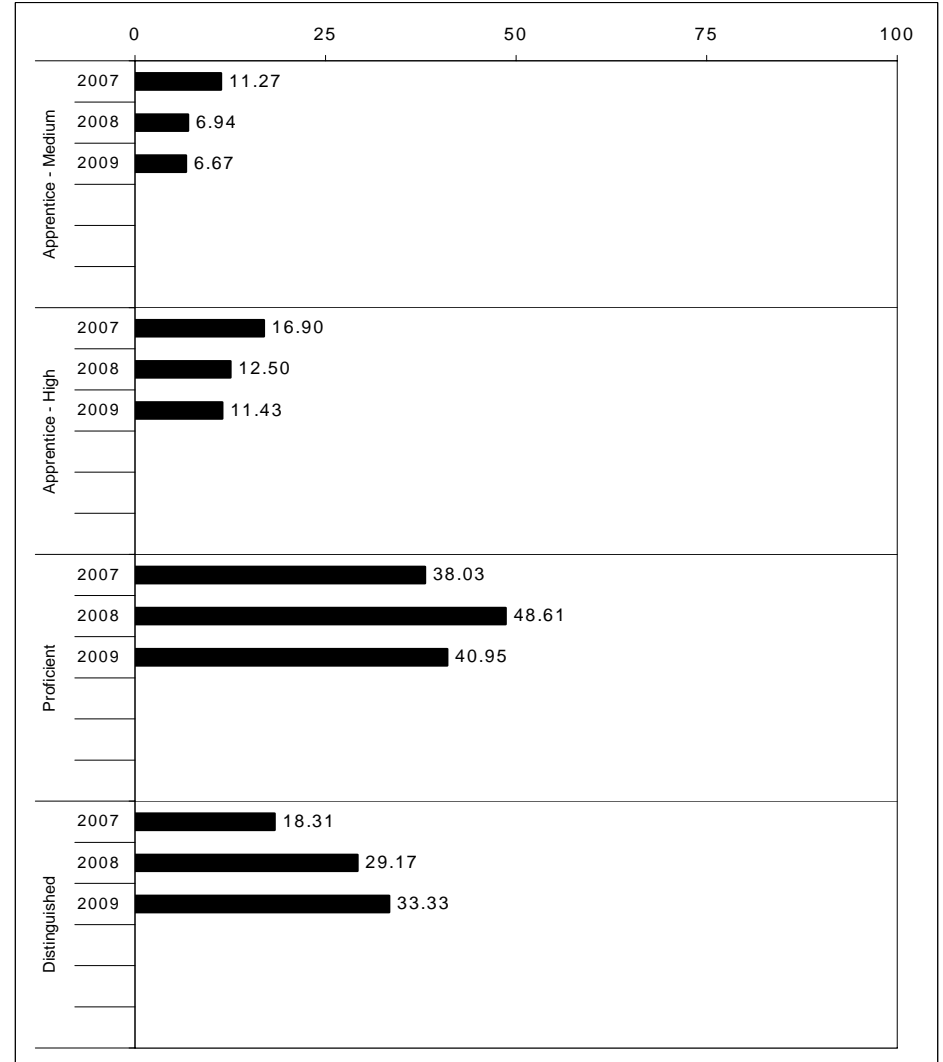
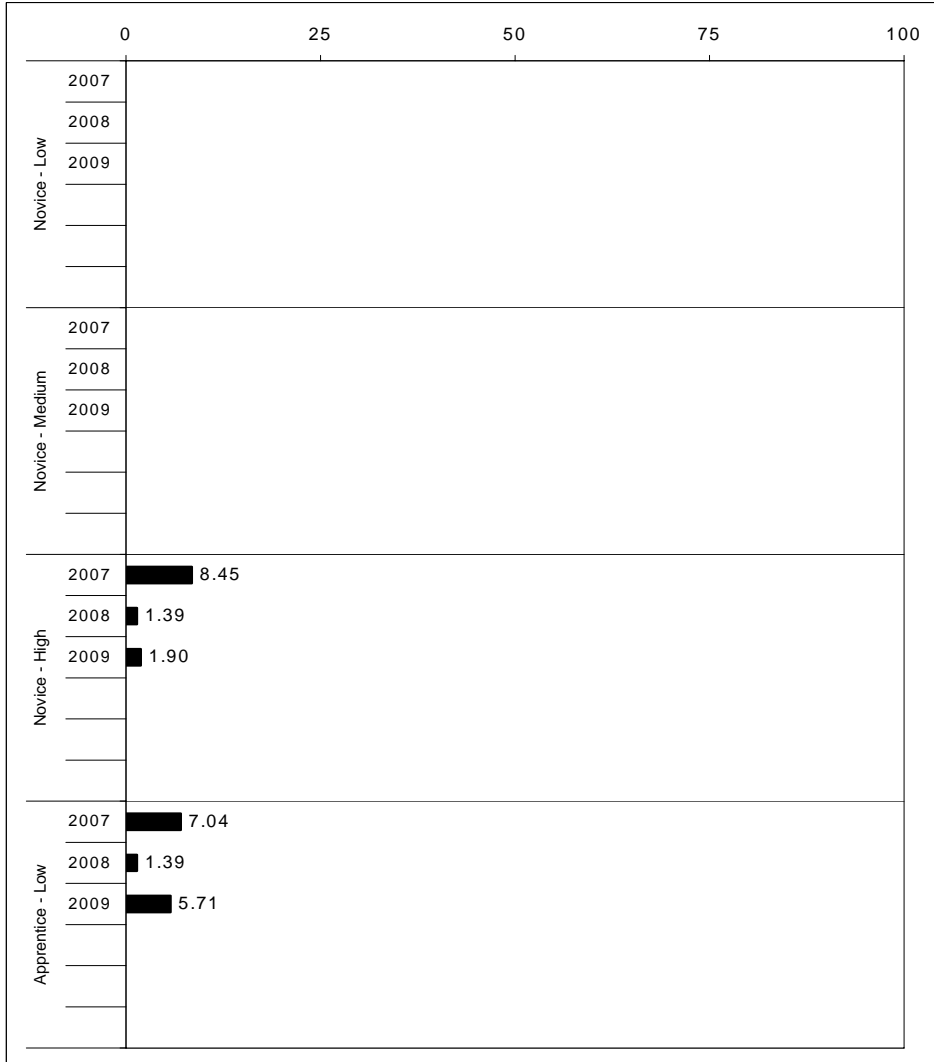
School: Sandersville Elementary
 District: Fayette County
 Code: 165058
 Grade: 05

	No. Items	No. Observations	SCHOOL								STATE								School -State Mean
			Percents						Mean	Std. Err.	Percents						Mean		
			B	0	1	2	3	4					No. Observations	B	0	1		2	3
OPEN RESPONSE																			
1.x.x - Number Prop Oper	4	130	0	5	13	20	28	35	2.7	0.1	73,199	0	8	20	18	25	29	2.5	0.2
2.x.x - Measurement	1	13	0	23	8	8	23	38	2.5	0.4	8,380	0	37	30	13	10	11	1.3	1.2
3.x.x - Geometry	2	104	0	7	14	31	27	21	2.4	0.1	56,900	0	6	24	30	26	14	2.2	0.2
4.x.x - Data Analysis & Probabilit	1	88	0	9	17	14	20	40	2.6	0.2	48,828	0	15	18	15	17	35	2.4	0.2
5.x.x - Algebraic Thinking	1	17	0	18	6	18	12	47	2.6	0.3	8,005	0	13	15	20	17	35	2.5	0.1
MULTIPLE CHOICE																			
1.x.x - Number Prop Oper	29	1,157	Correct	Incorrect	Omit/Mult				0.71	0.01	643,144	Correct	Incorrect	Omit/Mult				0.63	0.08
2.x.x - Measurement	9	281	72	29	0				0.66	0.03	154,489	63	37	0				0.62	0.04
3.x.x - Geometry	14	499	66	34	0				0.83	0.02	276,516	62	38	0				0.78	0.05
4.x.x - Data Analysis & Probabilit	11	456	83	17	0				0.67	0.02	252,212	78	22	0				0.64	0.03
5.x.x - Algebraic Thinking	10	440	67	33	0				0.65	0.02	244,140	64	36	0				0.65	0.00
			65	35	0							65	35	0					



2008-2009
INTERIM PERFORMANCE REPORT
SCIENCE TREND DATA
Performance Level Percents

School: Sandersville Elementary
 District: Fayette County
 Code: 165058
 Grade: 04

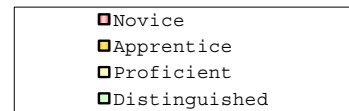
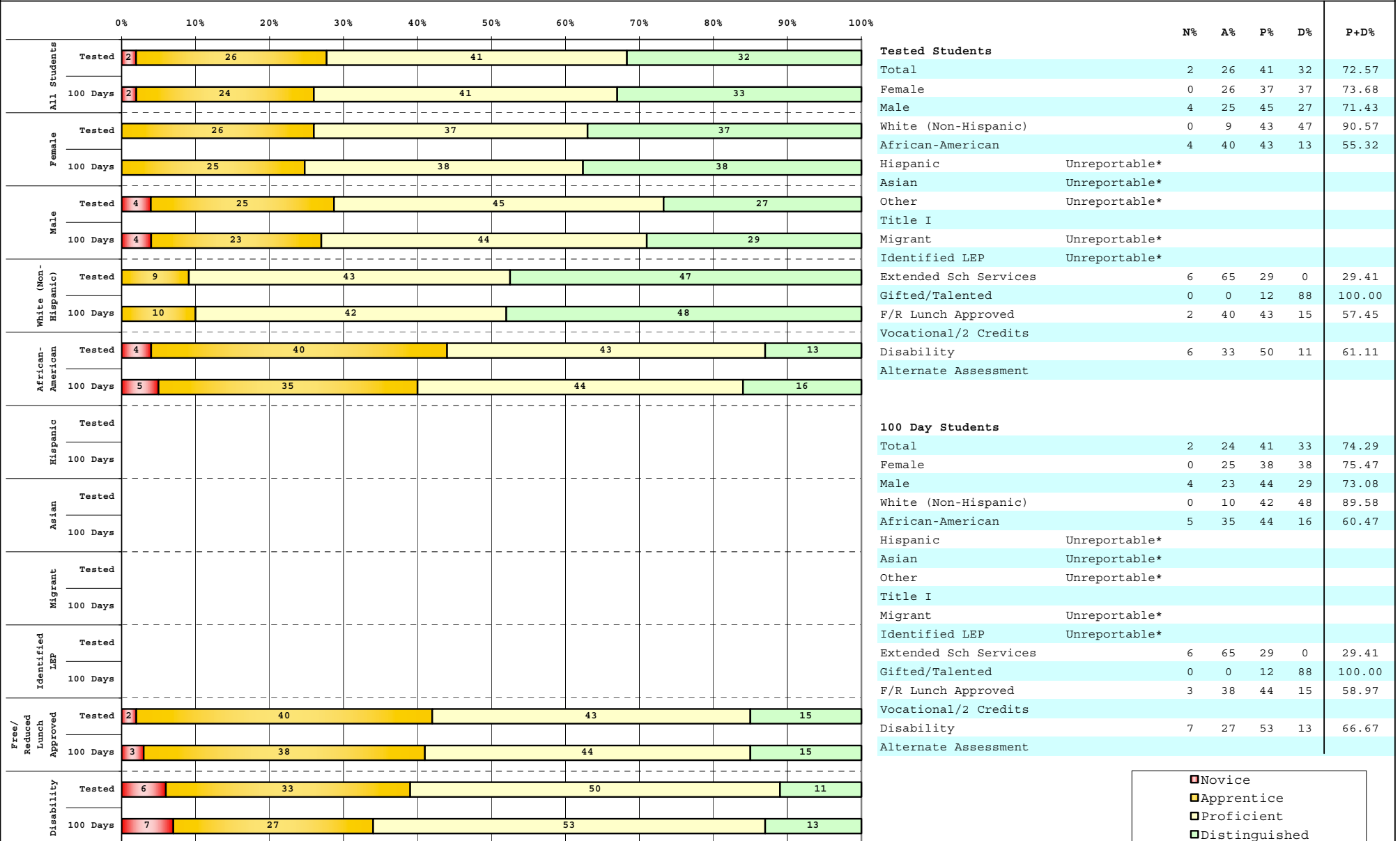


The horizontal bar represents the percent of students scoring at a performance level within a particular year. Percentages may not sum to 100% due to rounding.



**2008-2009
INTERIM PERFORMANCE REPORT
SCIENCE DISAGGREGATION
Performance Level Percents**

School: Sandersville Elementary
District: Fayette County
Code: 165058
Grade: 04



Percentage may not sum to 100% due to rounding. 'Unreportable*' indicates subpopulations with fewer than 10 students or subpopulations where all students score at the same performance level.



2008-2009
INTERIM PERFORMANCE REPORT
SCIENCE CORE CONTENT

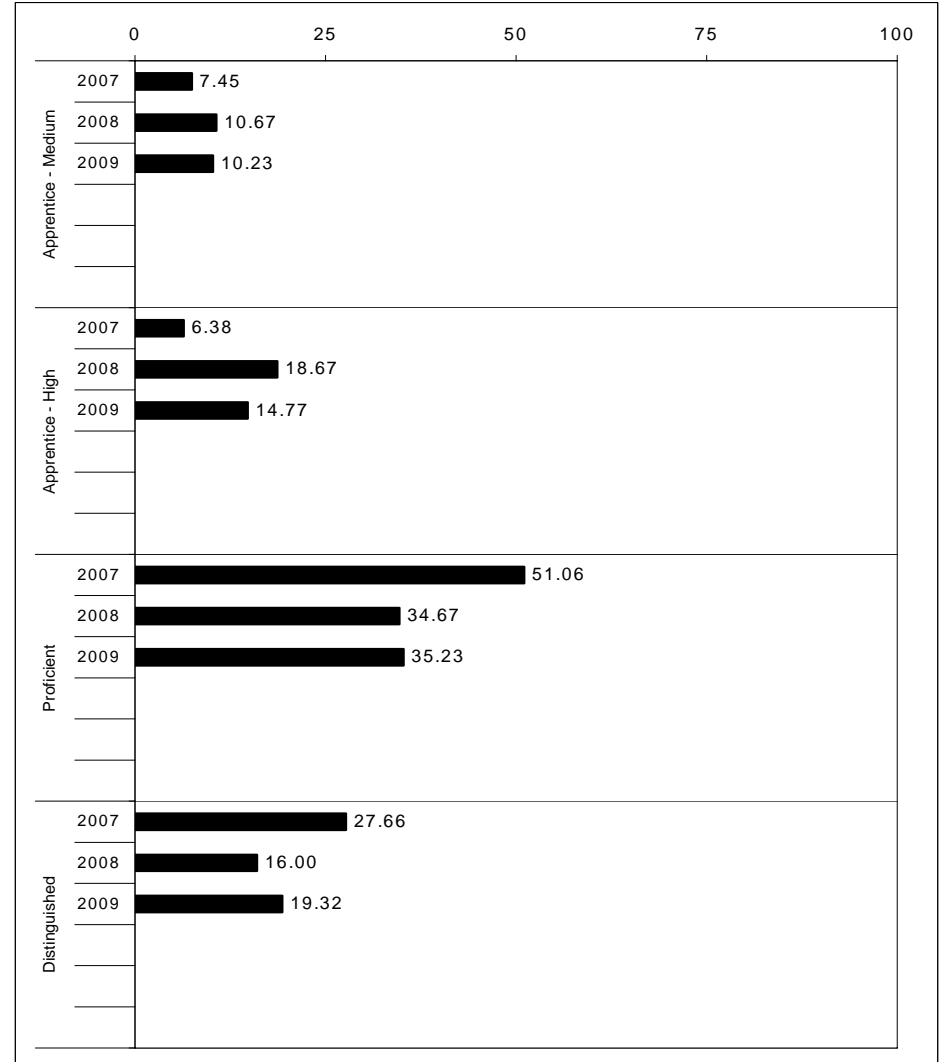
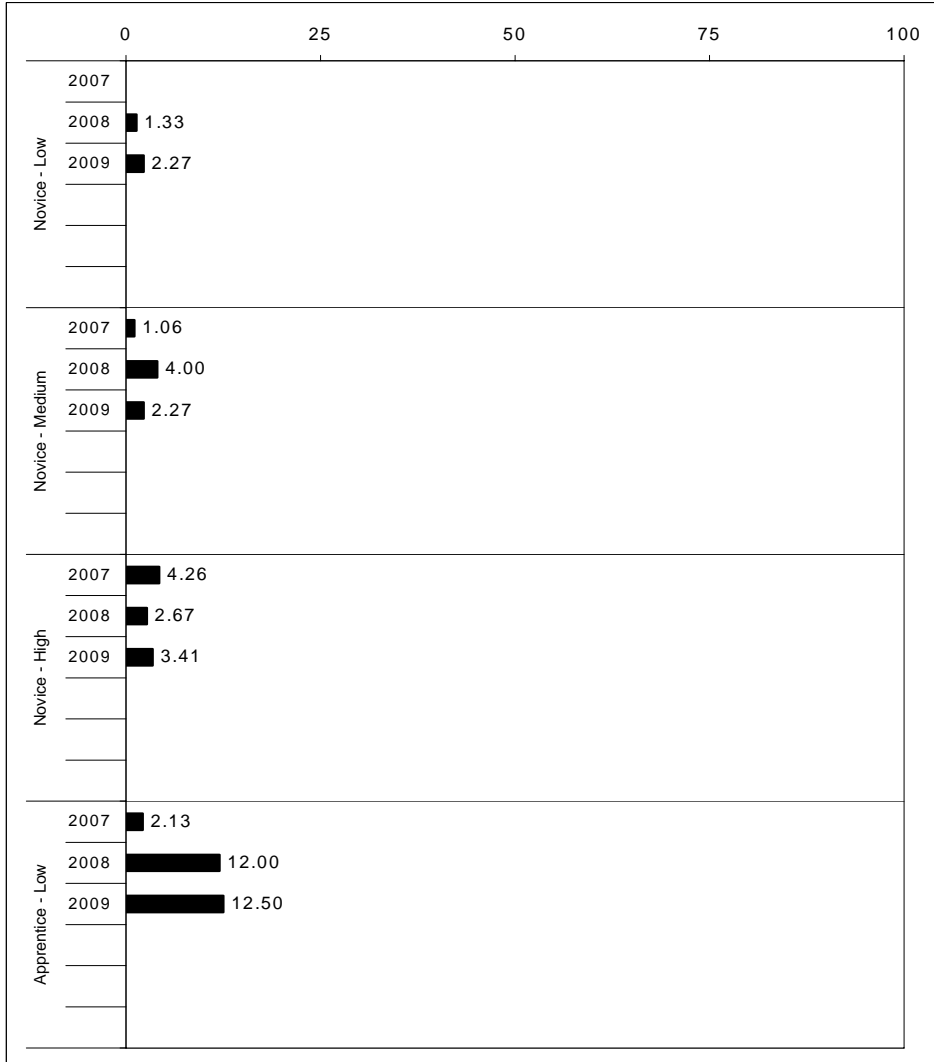
School: Sandersville Elementary
 District: Fayette County
 Code: 165058
 Grade: 04

	No. Items	No. Observations	SCHOOL							Mean	Std. Err.	No. Observations	STATE						Mean	School -State Mean
			B	0	1	2	3	4	B				0	1	2	3	4			
OPEN RESPONSE																				
1.x.x - Physical Science	2	34	0	24	24	44	9	0	1.4	0.2	16,337	0	17	19	42	17	5	1.7	-0.3	
2.x.x - Earth Space Science	3	137	0	10	17	38	30	5	2.0	0.1	65,658	0	12	22	35	26	4	1.9	0.1	
3.x.x - Biological Science	3	144	0	0	15	27	48	10	2.5	0.1	65,506	0	2	11	33	44	9	2.5	0.0	
4.x.x - Unifying Concepts	2	120	0	2	6	37	36	20	2.7	0.1	57,508	0	3	13	33	35	15	2.5	0.2	
MULTIPLE CHOICE																				
1.x.x - Physical Science	18	840	84	16	0				0.84	0.01	393,336	82	18	0				0.81	0.03	
2.x.x - Earth Space Science	19	857	71	29	0				0.71	0.02	401,488	71	29	0				0.71	0.00	
3.x.x - Biological Science	22	997	76	24	0				0.76	0.01	467,138	78	22	0				0.78	-0.02	
4.x.x - Unifying Concepts	14	683	89	11	0				0.89	0.01	319,534	84	15	0				0.84	0.05	



2008-2009
INTERIM PERFORMANCE REPORT
SOCIAL STUDIES TREND DATA
Performance Level Percents

School: Sandersville Elementary
 District: Fayette County
 Code: 165058
 Grade: 05



The horizontal bar represents the percent of students scoring at a performance level within a particular year. Percentages may not sum to 100% due to rounding.



**2008-2009
INTERIM PERFORMANCE REPORT
SOCIAL STUDIES DISAGGREGATION
Performance Level Percents**

School: Sandersville Elementary
District: Fayette County
Code: 165058
Grade: 05

		0%	10%	20%	30%	40%	50%	60%	70%	80%	90%	100%	N%	A%	P%	D%	P+D%	
All Students	Tested	10	37	35	18								Tested Students					
	100 Days	8	38	35	19								Total	10	37	35	18	53.26
Female	Tested	11	36	39	14								Female	11	36	39	14	52.27
	100 Days	8	38	40	15								Male	8	38	31	23	54.17
Male	Tested	8	38	31	23								White (Non-Hispanic)	6	15	58	21	78.79
	100 Days	8	38	31	23								African-American	14	52	20	14	34.09
White (Non-Hispanic)	Tested	6	15	58	21								Hispanic	Unreportable*				
	100 Days	3	16	59	22								Asian	Unreportable*				
African-American	Tested	14	52	20	14								Other	Unreportable*				
	100 Days	12	54	20	15								Title I					
Hispanic	Tested												Migrant	Unreportable*				
	100 Days												Identified LEP	Unreportable*				
Asian	Tested												Extended Sch Services	23	38	31	8	38.46
	100 Days												Gifted/Talented	Unreportable*				
Migrant	Tested												F/R Lunch Approved	11	53	26	9	35.85
	100 Days												Vocational/2 Credits					
Identified LEP	Tested												Disability	Unreportable*				
	100 Days												Alternate Assessment					
Free/Reduced Lunch Approved	Tested	11	53	26	9								100 Day Students					
	100 Days	8	56	26	10								Total	8	38	35	19	54.55
Disability	Tested												Female	8	38	40	15	55.00
	100 Days												Male	8	38	31	23	54.17
													White (Non-Hispanic)	3	16	59	22	81.25
													African-American	12	54	20	15	34.15
													Hispanic	Unreportable*				
													Asian	Unreportable*				
													Other	Unreportable*				
													Title I					
													Migrant	Unreportable*				
													Identified LEP	Unreportable*				
													Extended Sch Services	23	38	31	8	38.46
													Gifted/Talented	Unreportable*				
													F/R Lunch Approved	8	56	26	10	36.00
													Vocational/2 Credits					
													Disability	Unreportable*				
													Alternate Assessment					

■	Novice
■	Apprentice
■	Proficient
■	Distinguished

Percentage may not sum to 100% due to rounding. 'Unreportable*' indicates subpopulations with fewer than 10 students or subpopulations where all students score at the same performance level.



2008-2009
INTERIM PERFORMANCE REPORT
SOCIAL STUDIES CORE CONTENT

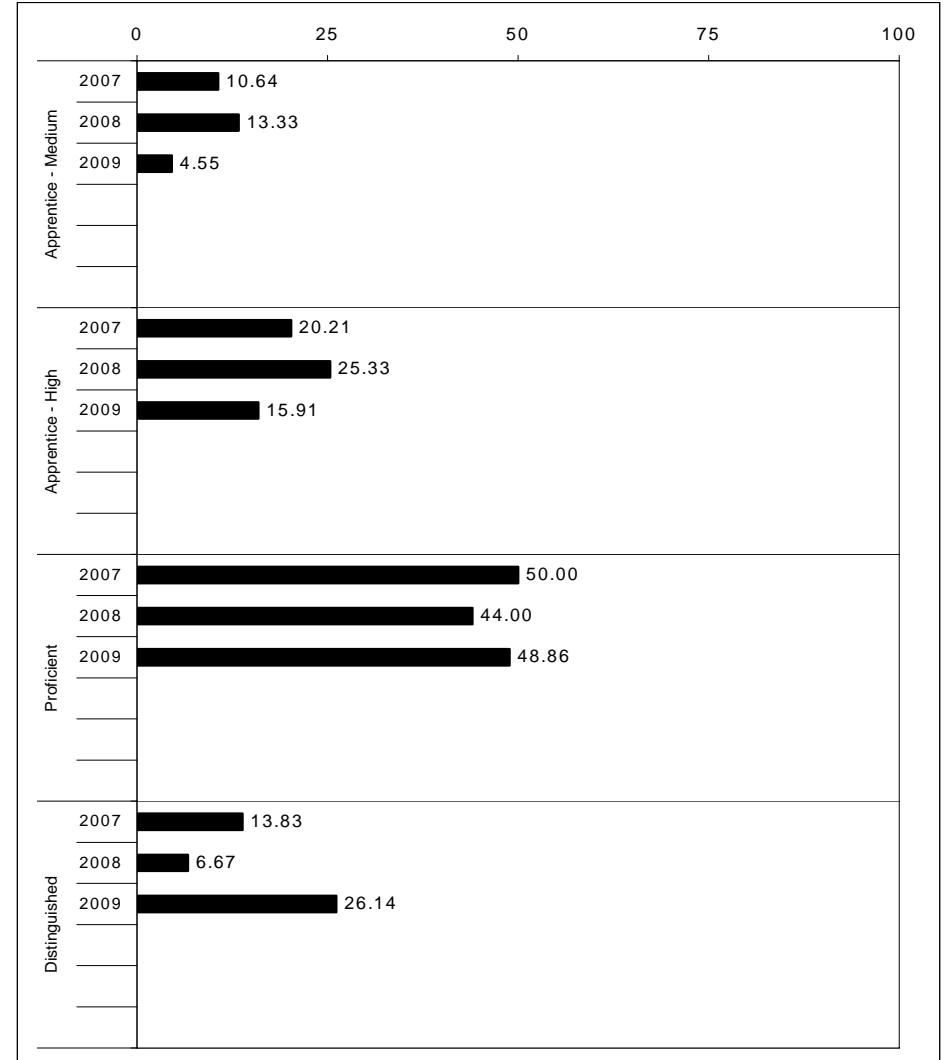
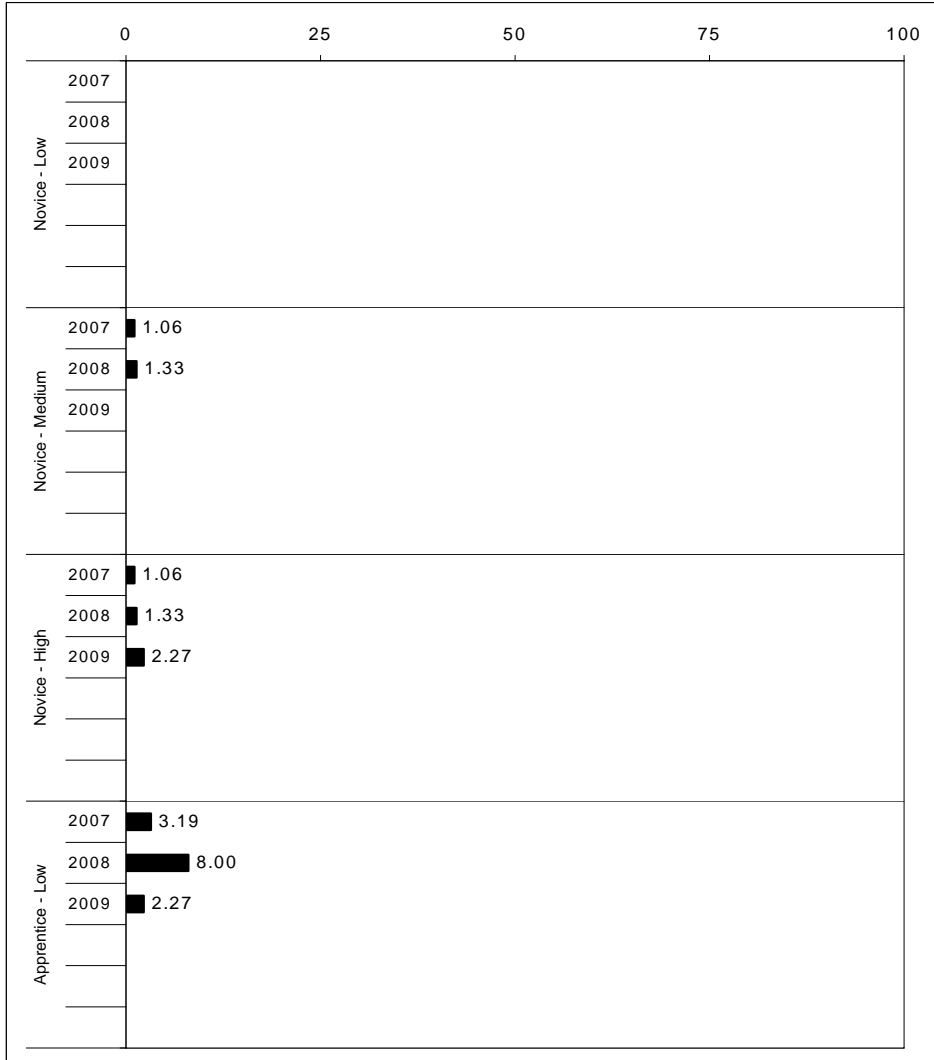
School: Sandersville Elementary
 District: Fayette County
 Code: 165058
 Grade: 05

	No. Items	No. Observations	SCHOOL							Mean	Std. Err.	No. Observations	STATE							Mean	School -State Mean
			B	0	1	2	3	4	B				0	1	2	3	4				
OPEN RESPONSE																					
1.x.x - Government & Civics	2	101	0	2	28	52	14	4	1.9	0.1	56,903	0	5	37	45	10	2	1.7	0.2		
2.x.x - Cultures & Societies	1	16	0	0	13	63	13	13	2.3	0.2	8,151	0	4	21	56	15	4	1.9	0.4		
3.x.x - Economics	1	88	0	20	30	28	16	6	1.6	0.1	48,828	0	11	33	41	12	3	1.6	0.0		
4.x.x - Geography	2	33	0	6	27	39	27	0	1.9	0.2	16,077	0	9	32	39	17	3	1.7	0.2		
5.x.x - Historical Perspective	3	114	0	4	27	49	13	7	1.9	0.1	65,353	0	7	35	46	10	2	1.7	0.2		
MULTIPLE CHOICE																					
1.x.x - Government & Civics	14	573	55	45	0				0.55	0.02	317,571	66	34	0				0.66	-0.11		
2.x.x - Cultures & Societies	11	382	63	37	0				0.63	0.02	211,383	70	30	0				0.69	-0.06		
3.x.x - Economics	11	453	69	31	0				0.69	0.02	252,215	73	27	0				0.73	-0.04		
4.x.x - Geography	16	679	61	39	0				0.61	0.02	374,337	66	34	0				0.66	-0.05		
5.x.x - Historical Perspective	27	1,052	63	37	0				0.63	0.01	586,076	69	31	0				0.69	-0.06		



2008-2009
INTERIM PERFORMANCE REPORT
WRITING ON-DEMAND TREND DATA
Performance Level Percents

School: Sandersville Elementary
 District: Fayette County
 Code: 165058
 Grade: 05



The horizontal bar represents the percent of students scoring at a performance level within a particular year. Percentages may not sum to 100% due to rounding.



2008-2009
INTERIM PERFORMANCE REPORT
WRITING ON-DEMAND DISAGGREGATION
Performance Level Percents

School: Sandersville Elementary
 District: Fayette County
 Code: 165058
 Grade: 05

		0%	10%	20%	30%	40%	50%	60%	70%	80%	90%	100%	N%	A%	P%	D%	P+D%		
All Students	Tested	1	24	50	25									Tested Students					
	100 Days	2	23	49	26									Total	1	24	50	25	75.00
Female	Tested		25	48	27									Female	0	25	48	27	75.00
	100 Days		23	48	30									Male	2	23	52	23	75.00
Male	Tested	2	23	52	23									White (Non-Hispanic)	0	21	39	39	78.79
	100 Days	4	23	50	23									African-American	2	25	59	14	72.73
White (Non-Hispanic)	Tested		21	39	39									Hispanic	Unreportable*				
	100 Days		19	41	41									Asian	Unreportable*				
African-American	Tested	2	25	59	14									Other	Unreportable*				
	100 Days	5	24	56	15									Title I					
Hispanic	Tested												Migrant	Unreportable*					
	100 Days												Identified LEP	Unreportable*					
Asian	Tested												Extended Sch Services	0	46	46	8	53.85	
	100 Days												Gifted/Talented	Unreportable*					
Migrant	Tested												F/R Lunch Approved	2	26	58	13	71.70	
	100 Days												Vocational/2 Credits						
Identified LEP	Tested												Disability	Unreportable*					
	100 Days												Alternate Assessment						
Free/Reduced Lunch Approved	Tested	2	26	58	13									100 Day Students					
	100 Days	2	28	56	14									Total	2	23	49	26	75.00
Disability	Tested												Female	0	23	48	30	77.50	
	100 Days												Male	4	23	50	23	72.92	
													White (Non-Hispanic)	0	19	41	41	81.25	
													African-American	5	24	56	15	70.73	
													Hispanic	Unreportable*					
													Asian	Unreportable*					
													Other	Unreportable*					
													Title I						
													Migrant	Unreportable*					
													Identified LEP	Unreportable*					
													Extended Sch Services	0	46	46	8	53.85	
													Gifted/Talented	Unreportable*					
													F/R Lunch Approved	2	28	56	14	70.00	
													Vocational/2 Credits						
													Disability	Unreportable*					
													Alternate Assessment						

■	Novice
■	Apprentice
■	Proficient
■	Distinguished

Percentage may not sum to 100% due to rounding. 'Unreportable*' indicates subpopulations with fewer than 10 students or subpopulations where all students score at the same performance level.



2008-2009
INTERIM PERFORMANCE REPORT
WRITING ON-DEMAND CORE CONTENT

School: Sandersville Elementary
 District: Fayette County
 Code: 165058
 Grade: 05

WRITING PROMPT	SCHOOL												STATE												School
	No. Observations	Percents											Mean	Percents											Mean
	B	0	1	2	3	4	5	6	7	8		B	0	1	2	3	4	5	6	7	8				
Inform																									
1.X.X - Content	29	0	0	0	3	0	31	17	24	17	7	5.38	0	1	1	9	9	34	18	21	4	2	4.43	0.95	
2.X.X - Structure	29	0	0	0	7	0	31	14	28	14	7	5.24	0	1	2	9	10	35	19	19	3	1	4.33	0.91	
3.X.X - Convention	29	0	0	0	10	0	24	21	24	14	7	5.17	0	0	0	12	11	34	19	19	3	1	4.38	0.79	
Narrate for a purpose																									
1.X.X - Content	30	0	0	0	0	0	17	13	53	7	10	5.80	0	1	1	10	9	36	18	21	3	1	4.35	1.45	
2.X.X - Structure	30	0	0	0	0	0	20	10	53	10	7	5.73	0	1	2	10	10	37	17	19	3	1	4.27	1.46	
3.X.X - Convention	30	0	0	0	0	7	13	10	53	7	10	5.70	0	0	0	12	10	36	18	19	3	1	4.33	1.37	
Persuade																									
1.X.X - Content	29	0	3	0	0	3	28	14	28	17	7	5.31	0	1	1	8	8	33	19	21	5	3	4.50	0.81	
2.X.X - Structure	29	0	3	0	3	3	28	14	28	14	7	5.14	0	2	2	9	10	33	19	20	5	2	4.42	0.72	
3.X.X - Convention	29	0	0	0	3	10	21	17	24	17	7	5.28	0	0	0	11	10	32	19	20	5	2	4.50	0.78	

MULTIPLE CHOICE	No. Items	SCHOOL							STATE							School
		No. Observations	Percents			Mean	Std. Err.	No. Observations	Percents			Mean	-State Mean			
		Correct	Incorrect	Omit/Mult				Correct	Incorrect	Omit/Mult						
4.x.x - Writing Process	52	1,056	74	26	0	0.74	0.01	585,936	73	27	0	0.73	0.01			
4.10.x - Revising	16	230	69	31	0	0.69	0.03	130,317	66	34	0	0.66	0.03			
4.11.x - Editing	36	826	76	24	0	0.76	0.02	455,619	75	24	0	0.75	0.01			