



### Interim Performance Report

In March 2009, the Kentucky General Assembly passed Senate Bill 1 (SB1) that was subsequently signed into law by the Governor. SB1 calls for a significant overhaul of the state's assessment and accountability system. The new assessment system begins in the spring of 2012. The school years of 2008-2009, 2009-2010 and 2010-2011 are described in SB1 as an interim period. This three-year period allows Kentucky to develop the new assessment system and to carry on state and federal testing requirements.

The Interim Performance Report includes the Kentucky Core Content Test (KCCT) in Reading (grades 3-8 and 10), Mathematics (grades 3-8 and 11), Science (grades 4, 7 and 11), Social Studies (grades 5, 8 and 11) and Writing On-Demand (grades 5, 8 and 12). The KCCT is based on the Kentucky Core Content for Assessment (Version 4.1) and contains multiple choice and open response questions. The Writing On-Demand test uses writing prompts that require students to craft a piece of writing in a 60 minute period.

The KCCT is developed under the direction of content advisory committees of Kentucky educators who draft, review and select test questions. All test items are reviewed by a bias review committee to enhance the fairness of items for all Kentucky students.

The KCCT continues to fulfill the requirements of the federal statute known as the No Child Left Behind Act of 2001. A separate accountability report for No Child Left Behind (NCLB) is published by the Kentucky Department of Education.

The Interim Performance Report focuses entirely on the five state-required content areas and provides data for schools or districts. The data in this report is not used directly for state accountability; although, these results can fulfill the requirements of Senate Bill 168 from 2002 and may be used by schools or districts for their own local accountability needs.

Performance standards are based on descriptions of Novice, Apprentice, Proficient and Distinguished (NAPD) student performance levels specific to the content area and grade being assessed. The performance standards, in conjunction with Kentucky's Core Content for Assessment, should allow instruction to better focus on the content area to be taught and on how well students must demonstrate achievement in each content area.

#### Reporting Changes for 2009

Based on SB1, Kentucky will not be reporting state accountability and academic indices as in the past. The report does have several familiar pages with performance level (NAPD) trend, core content and disaggregation data per content area. Districts and schools will still see distributions of how students scored in the Novice (with sublevels), Apprentice (with sublevels), Proficient and Distinguished performance levels.

#### Confidentiality Changes

Due to federal regulations around the Family Education Rights and Privacy Act (FERPA), the numbers of students have been removed. Though there is a need to report as much data as possible, there is also a paramount need to maintain the confidential aspects of individual scores. When scores are reported in what is commonly called "small cells" where very few students may be categorized, there is the possibility of revealing individual scores when numbers are reported. Numbers are reported to each district in a confidential report that accompanies the public Interim Performance Report.

2008-2009

## INTERIM PERFORMANCE REPORT

School: Rosa Parks Elementary School

District: Fayette County

Code: 165052

Grade: PRIMARY-05

### CONTENTS OF THIS REPORT

Introduction	1
Academic Trend Data	
Reading Results	2-8
Mathematics Results	9-15
Science Results	16-18
Social Studies Results	19-21
Writing Results	22-24

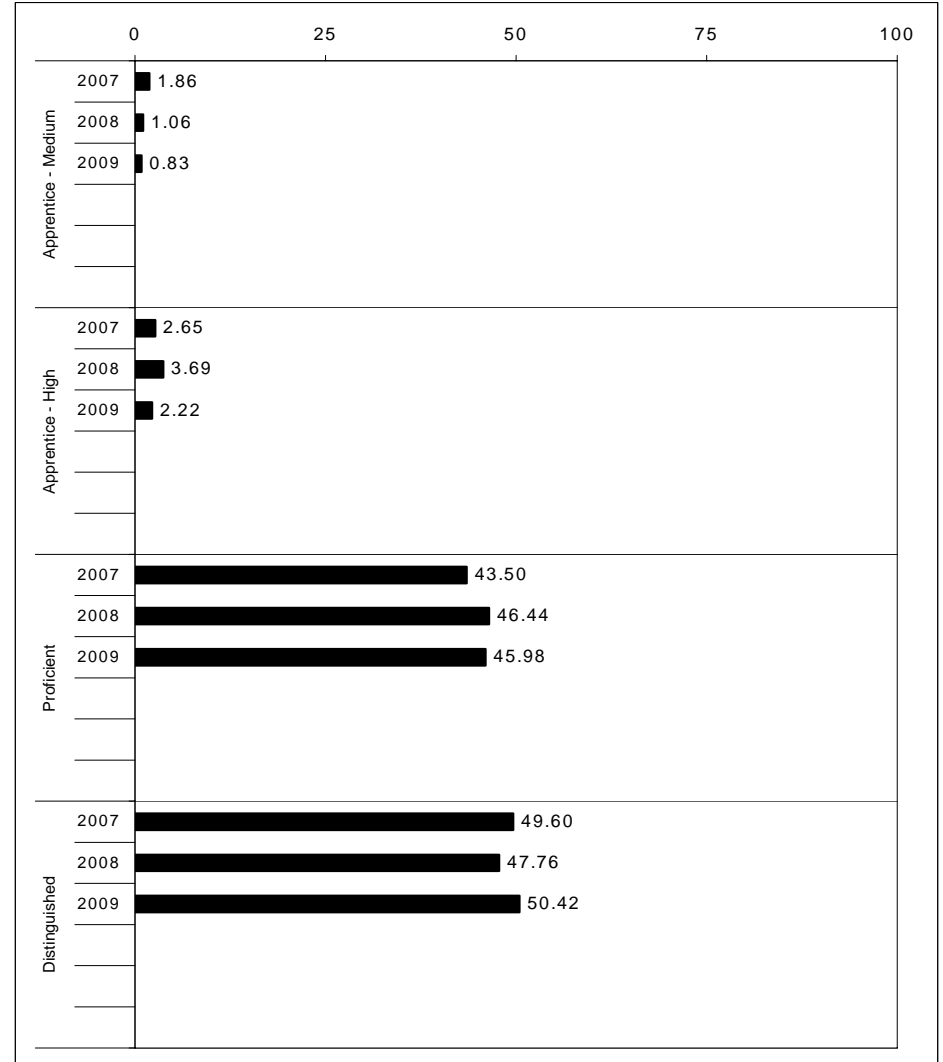
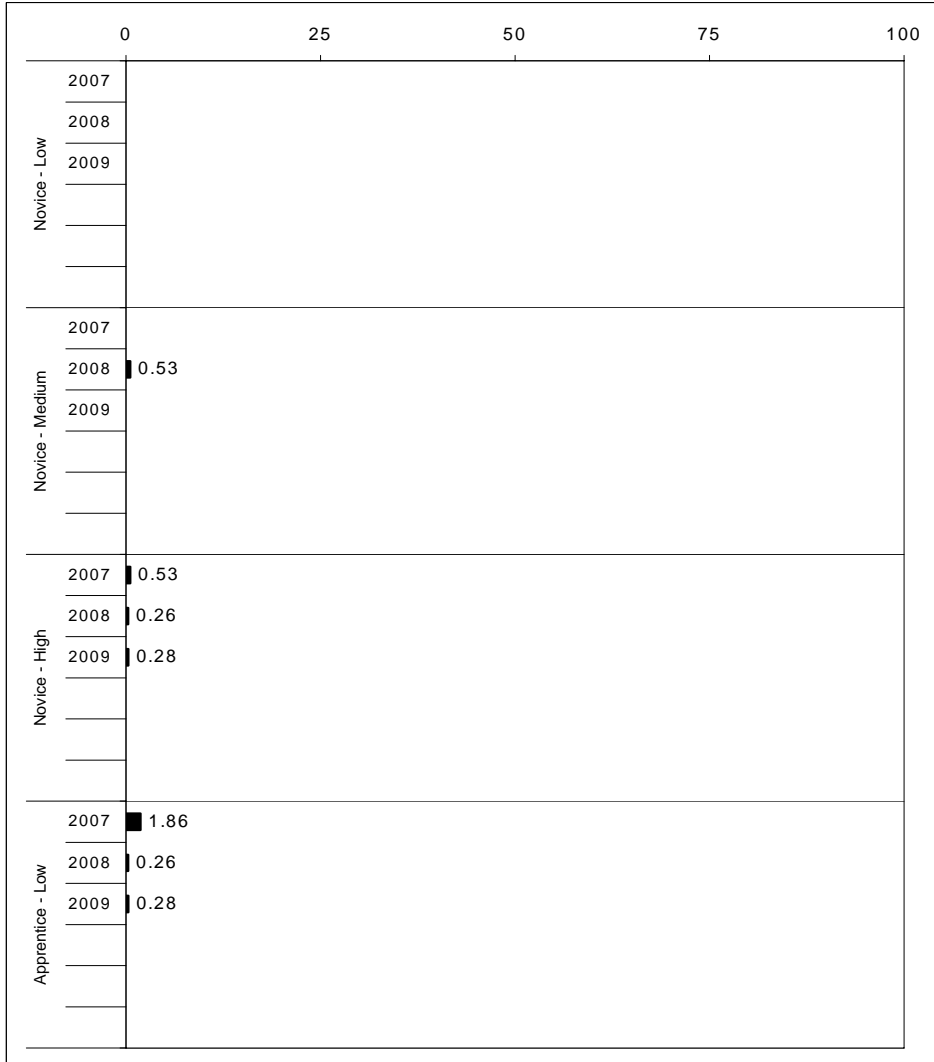
For more information, refer to the 2009 Interim Assessment Interpretative Guide on the Kentucky Department of Education Web site ([www.education.ky.gov](http://www.education.ky.gov)).





2008-2009  
**INTERIM PERFORMANCE REPORT**  
**READING TREND DATA**  
**Performance Level Percents**

School: Rosa Parks Elementary School  
 District: Fayette County  
 Code: 165052  
 Grade: ELEMENTARY



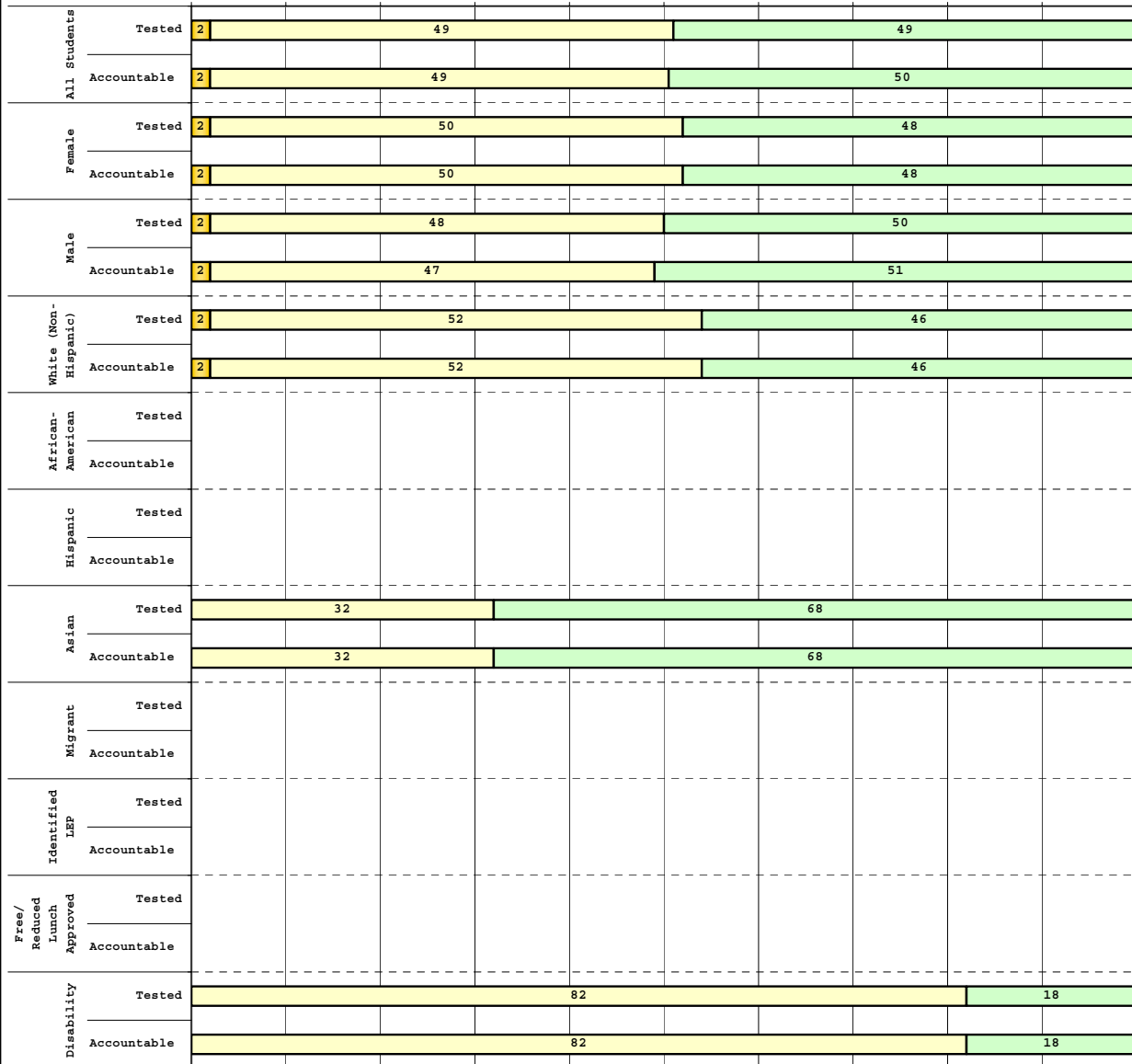
The horizontal bar represents the percent of students scoring at a performance level within a particular year. Percentages may not sum to 100% due to rounding.



**2008-2009  
INTERIM PERFORMANCE REPORT  
READING DISAGGREGATION  
Performance Level Percents**

School: Rosa Parks Elementary School  
District: Fayette County  
Code: 165052  
Grade: 03

0% 10% 20% 30% 40% 50% 60% 70% 80% 90% 100%



Category	N%	A%	P%	D%	P+D%
<b>Tested Students</b>					
Total	0	2	49	49	98.31
Female	0	2	50	48	98.39
Male	0	2	48	50	98.21
White (Non-Hispanic)	0	2	52	46	97.83
African-American	Unreportable*				
Hispanic	Unreportable*				
Asian	0	0	32	68	100.00
Other	Unreportable*				
Title I					
Migrant					
Identified LEP	Unreportable*				
Extended Sch Services	Unreportable*				
Gifted/Talented	0	0	36	64	100.00
F/R Lunch Approved	Unreportable*				
Vocational/2 Credits					
Disability	0	0	82	18	100.00
Alternate Assessment					
<b>NCLB Accountable Students</b>					
Total	0	2	49	50	98.29
Female	0	2	50	48	98.39
Male	0	2	47	51	98.18
White (Non-Hispanic)	0	2	52	46	97.83
African-American	Unreportable*				
Hispanic	Unreportable*				
Asian	0	0	32	68	100.00
Other	Unreportable*				
Title I					
Migrant					
Identified LEP	Unreportable*				
Extended Sch Services	Unreportable*				
Gifted/Talented	0	0	36	64	100.00
F/R Lunch Approved	Unreportable*				
Vocational/2 Credits					
Disability	0	0	82	18	100.00
Alternate Assessment					

<span style="display:inline-block; width:10px; height:10px; background-color:yellow; border:1px solid black;"></span> Novice
<span style="display:inline-block; width:10px; height:10px; background-color:orange; border:1px solid black;"></span> Apprentice
<span style="display:inline-block; width:10px; height:10px; background-color:lightgreen; border:1px solid black;"></span> Proficient
<span style="display:inline-block; width:10px; height:10px; background-color:lightblue; border:1px solid black;"></span> Distinguished

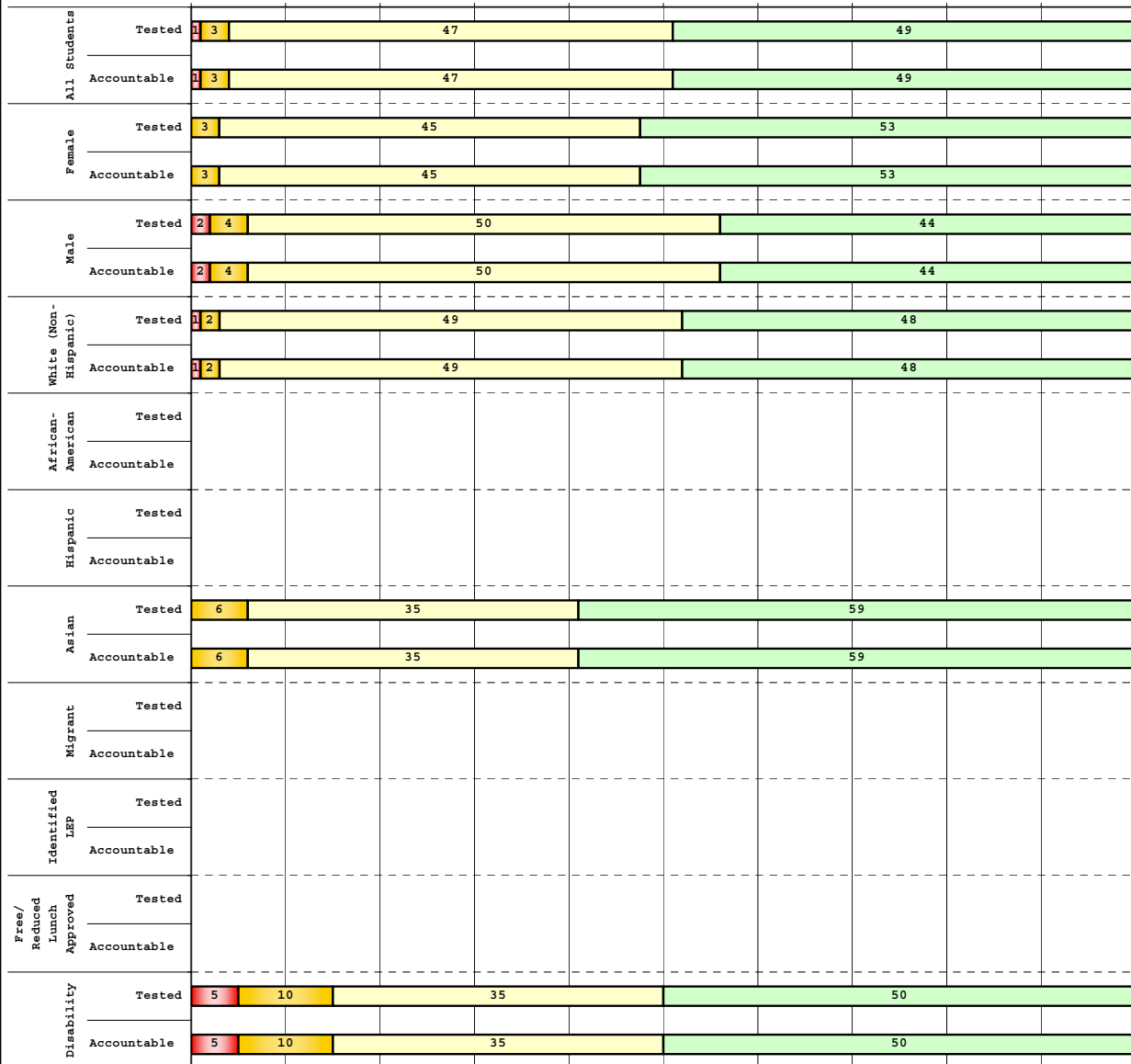
Percentage may not sum to 100% due to rounding. 'Unreportable\*' indicates subpopulations with fewer than 10 students or subpopulations where all students score at the same performance level.



**2008-2009  
INTERIM PERFORMANCE REPORT  
READING DISAGGREGATION  
Performance Level Percents**

School: Rosa Parks Elementary School  
District: Fayette County  
Code: 165052  
Grade: 04

0% 10% 20% 30% 40% 50% 60% 70% 80% 90% 100%



Category	N%	A%	P%	D%	P+D%
<b>Tested Students</b>					
Total	1	3	47	49	96.15
Female	0	3	45	53	97.37
Male	2	4	50	44	94.44
White (Non-Hispanic)	1	2	49	48	97.22
African-American	Unreportable*				
Hispanic					
Asian	0	6	35	59	94.12
Other	Unreportable*				
Title I					
Migrant					
Identified LEP	Unreportable*				
Extended Sch Services	Unreportable*				
Gifted/Talented	0	0	27	73	100.00
F/R Lunch Approved	Unreportable*				
Vocational/2 Credits					
Disability	5	10	35	50	85.00
Alternate Assessment					
<b>NCLB Accountable Students</b>					
Total	1	3	47	49	96.15
Female	0	3	45	53	97.37
Male	2	4	50	44	94.44
White (Non-Hispanic)	1	2	49	48	97.22
African-American	Unreportable*				
Hispanic					
Asian	0	6	35	59	94.12
Other	Unreportable*				
Title I					
Migrant					
Identified LEP	Unreportable*				
Extended Sch Services	Unreportable*				
Gifted/Talented	0	0	27	73	100.00
F/R Lunch Approved	Unreportable*				
Vocational/2 Credits					
Disability	5	10	35	50	85.00
Alternate Assessment					

<span style="color:red">■</span> Novice
<span style="color:orange">■</span> Apprentice
<span style="color:green">■</span> Proficient
<span style="color:lightgreen">■</span> Distinguished

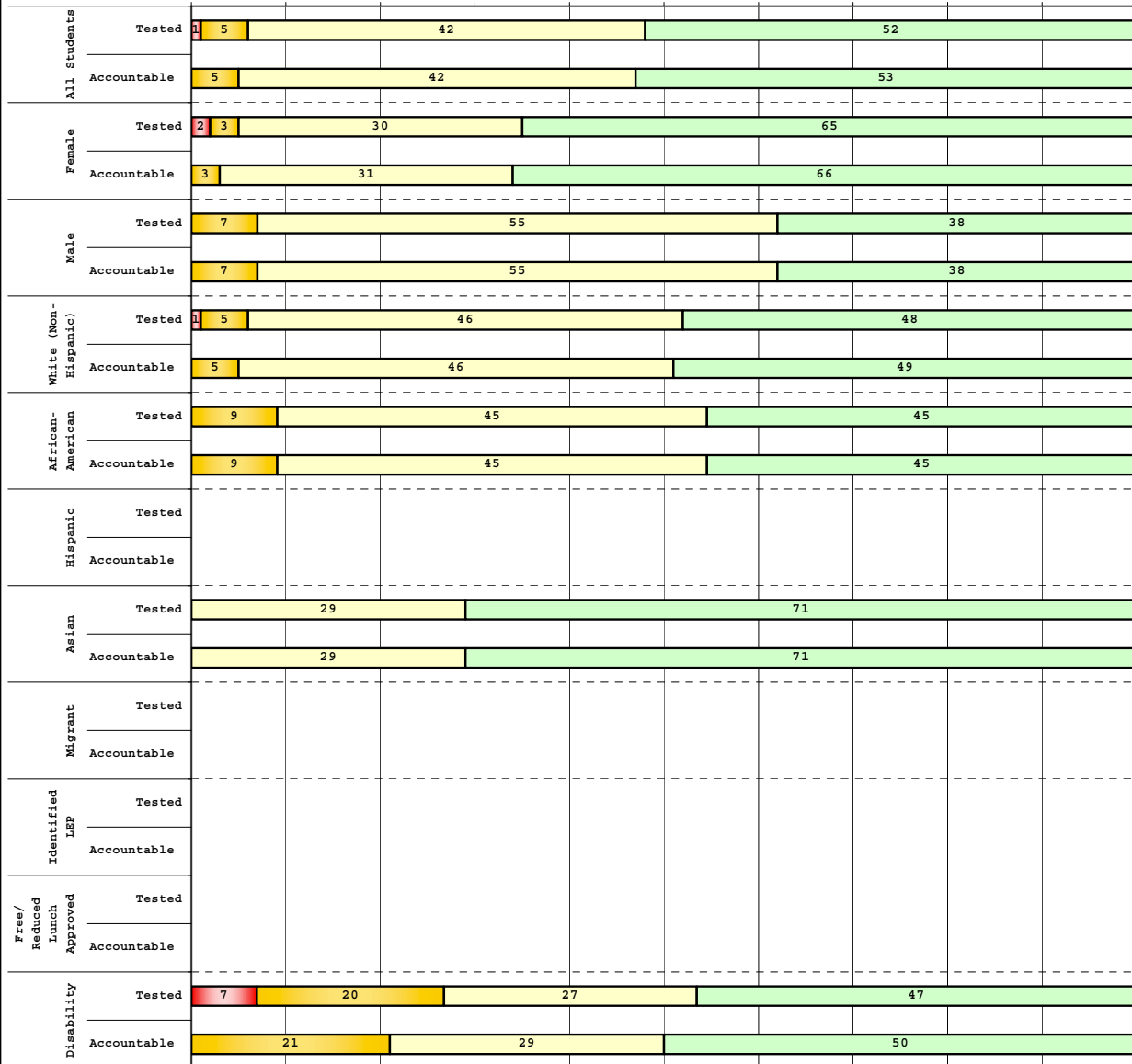
Percentage may not sum to 100% due to rounding. 'Unreportable\*' indicates subpopulations with fewer than 10 students or subpopulations where all students score at the same performance level.



**2008-2009  
INTERIM PERFORMANCE REPORT  
READING DISAGGREGATION  
Performance Level Percents**

School: Rosa Parks Elementary School  
 District: Fayette County  
 Code: 165052  
 Grade: 05

0% 10% 20% 30% 40% 50% 60% 70% 80% 90% 100%



**Tested Students**

	N%	A%	P%	D%	P+D%
Total	1	5	42	52	93.97
Female	2	3	30	65	95.00
Male	0	7	55	38	92.86
White (Non-Hispanic)	1	5	46	48	94.05
African-American	0	9	45	45	90.91
Hispanic					Unreportable*
Asian	0	0	29	71	100.00
Other					Unreportable*
Title I					
Migrant					
Identified LEP					Unreportable*
Extended Sch Services					Unreportable*
Gifted/Talented	0	0	31	69	100.00
F/R Lunch Approved					Unreportable*
Vocational/2 Credits					
Disability	7	20	27	47	73.33
Alternate Assessment					

**NCLB Accountable Students**

	N%	A%	P%	D%	P+D%
Total	0	5	42	53	94.74
Female	0	3	31	66	96.61
Male	0	7	55	38	92.73
White (Non-Hispanic)	0	5	46	49	95.12
African-American	0	9	45	45	90.91
Hispanic					Unreportable*
Asian	0	0	29	71	100.00
Other					Unreportable*
Title I					
Migrant					
Identified LEP					Unreportable*
Extended Sch Services					Unreportable*
Gifted/Talented	0	0	30	70	100.00
F/R Lunch Approved					Unreportable*
Vocational/2 Credits					
Disability	0	21	29	50	78.57
Alternate Assessment					

<span style="color: red;">■</span>	Novice
<span style="color: orange;">■</span>	Apprentice
<span style="color: yellow;">■</span>	Proficient
<span style="color: green;">■</span>	Distinguished

Percentage may not sum to 100% due to rounding. 'Unreportable\*' indicates subpopulations with fewer than 10 students or subpopulations where all students score at the same performance level.



**2008-2009**  
**INTERIM PERFORMANCE REPORT**  
**READING CORE CONTENT**

School: Rosa Parks Elementary School  
 District: Fayette County  
 Code: 165052  
 Grade: 03

	No. Items	No. Observations	SCHOOL							Mean	Std. Err.	No. Observations	STATE							Mean	School -State Mean
			B	0	1	2	3	4	Percents				B	0	1	2	3	4	Percents		
<b>OPEN RESPONSE</b>																					
2.0.x - Developing Understanding	2	234	0	2	17	47	30	4	2.2	0.1	100,212	0	10	30	44	14	2	1.7	0.5		
3.0.x - Interpreting Text	2	234	0	2	17	47	30	4	2.2	0.1	100,212	0	10	30	44	14	2	1.7	0.5		
<b>MULTIPLE CHOICE</b>																					
1.0.x - Forming a Foundation	32	916	96	4	0				0.96	0.01	392,589	83	17	0				0.83	0.13		
2.0.x - Developing Understanding	89	2,316	92	8	0				0.92	0.01	993,477	80	20	0				0.80	0.12		
3.0.x - Interpreting Text	31	1,099	92	8	0				0.92	0.01	468,115	77	23	0				0.77	0.15		
5.0.x - Critical Stance	15	488	95	5	0				0.94	0.02	208,359	79	21	0				0.79	0.15		



**2008-2009  
INTERIM PERFORMANCE REPORT  
READING CORE CONTENT**

School: Rosa Parks Elementary School  
 District: Fayette County  
 Code: 165052  
 Grade: 04

	No. Items	No. Observations	SCHOOL							Mean	Std. Err.	No. Observations	STATE							Mean	School -State Mean
			B	0	1	2	3	4	B				0	1	2	3	4				
<b>OPEN RESPONSE</b>																					
2.0.x - Developing Understanding	5	217	0	0	9	49	34	8	2.4	0.1	81,849	0	3	24	52	18	3	1.9	0.5		
3.0.x - Interpreting Text	6	347	0	0	9	37	39	14	2.6	0.0	131,199	0	4	22	45	23	5	2.0	0.6		
<b>MULTIPLE CHOICE</b>																					
1.0.x - Forming a Foundation	34	1,065	85	15	0				0.85	0.01	401,452	72	28	0				0.71	0.14		
2.0.x - Developing Understanding	76	2,292	85	15	0				0.85	0.01	868,422	73	27	0				0.73	0.12		
3.0.x - Interpreting Text	29	735	88	12	0				0.88	0.02	278,648	79	21	0				0.79	0.09		
5.0.x - Critical Stance	9	411	88	12	0				0.88	0.02	155,704	74	26	0				0.74	0.14		



**2008-2009**  
**INTERIM PERFORMANCE REPORT**  
**READING CORE CONTENT**

School: Rosa Parks Elementary School  
 District: Fayette County  
 Code: 165052  
 Grade: 05

	No. Items	No. Observations	SCHOOL								Mean	Std. Err.	No. Observations	STATE								Mean	School -State Mean
			B	0	1	2	3	4	Percents														
<b>OPEN RESPONSE</b>																							
2.0.x - Developing Understanding	6	210	0	1	7	38	30	23	2.7	0.1	89,507	0	5	23	48	20	5	2.0	0.7				
3.0.x - Interpreting Text	6	302	0	2	7	41	31	20	2.6	0.1	130,403	0	5	21	50	19	4	2.0	0.6				
<b>MULTIPLE CHOICE</b>																							
1.0.x - Forming a Foundation	28	627	90	10	0				0.90	0.02	268,187	74	26	0				0.74	0.16				
2.0.x - Developing Understanding	71	1,911	89	11	0				0.89	0.01	823,068	80	20	0				0.80	0.09				
3.0.x - Interpreting Text	27	805	89	11	0				0.89	0.01	341,653	81	19	0				0.81	0.08				
5.0.x - Critical Stance	17	704	90	10	0				0.90	0.02	300,671	75	25	0				0.75	0.15				



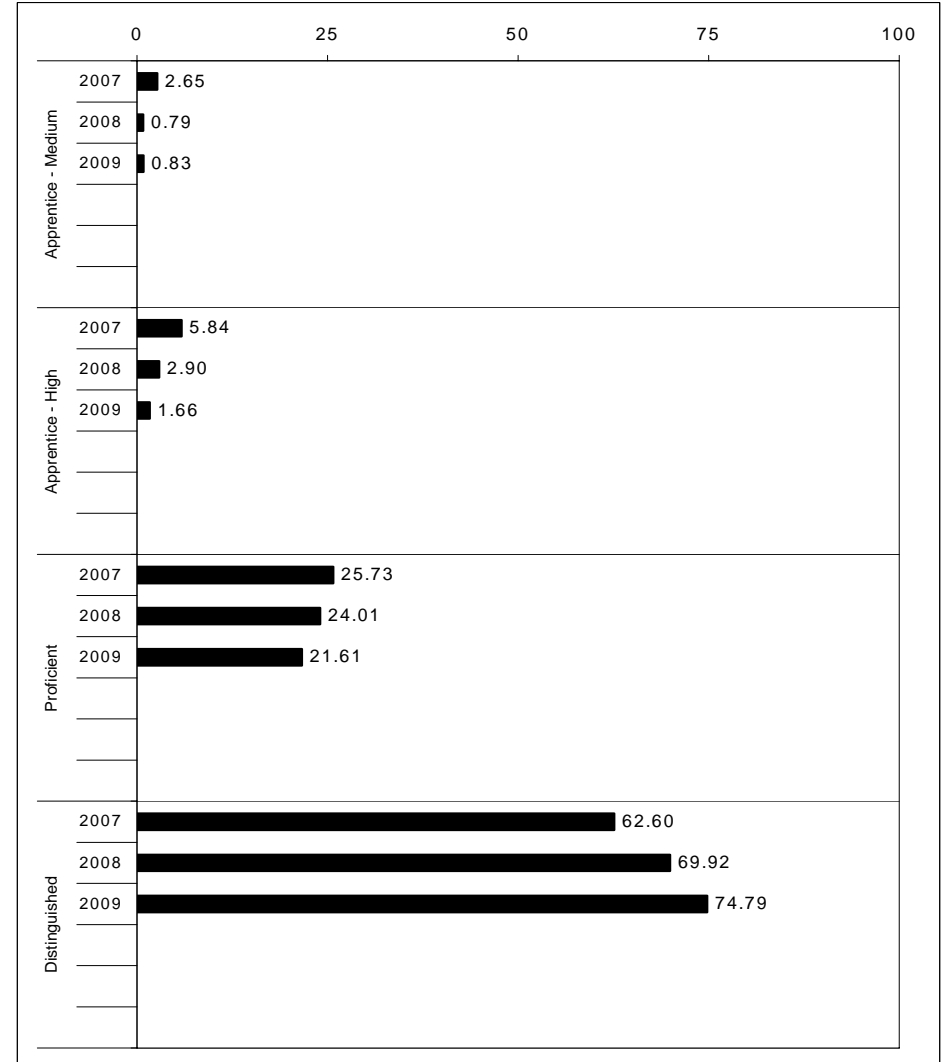
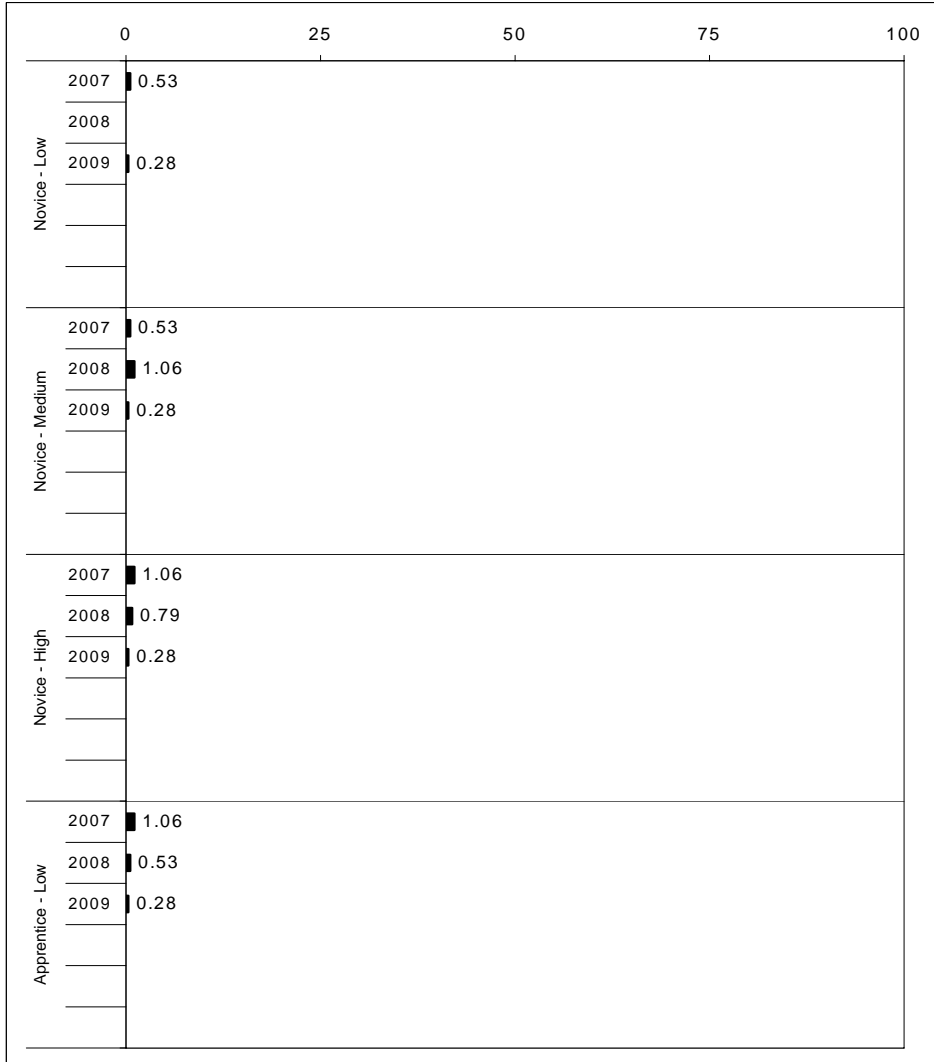
2008-2009  
**INTERIM PERFORMANCE REPORT**  
**MATHEMATICS TREND DATA**  
**Performance Level Percents**

School: Rosa Parks Elementary School

District: Fayette County

Code: 165052

Grade: ELEMENTARY



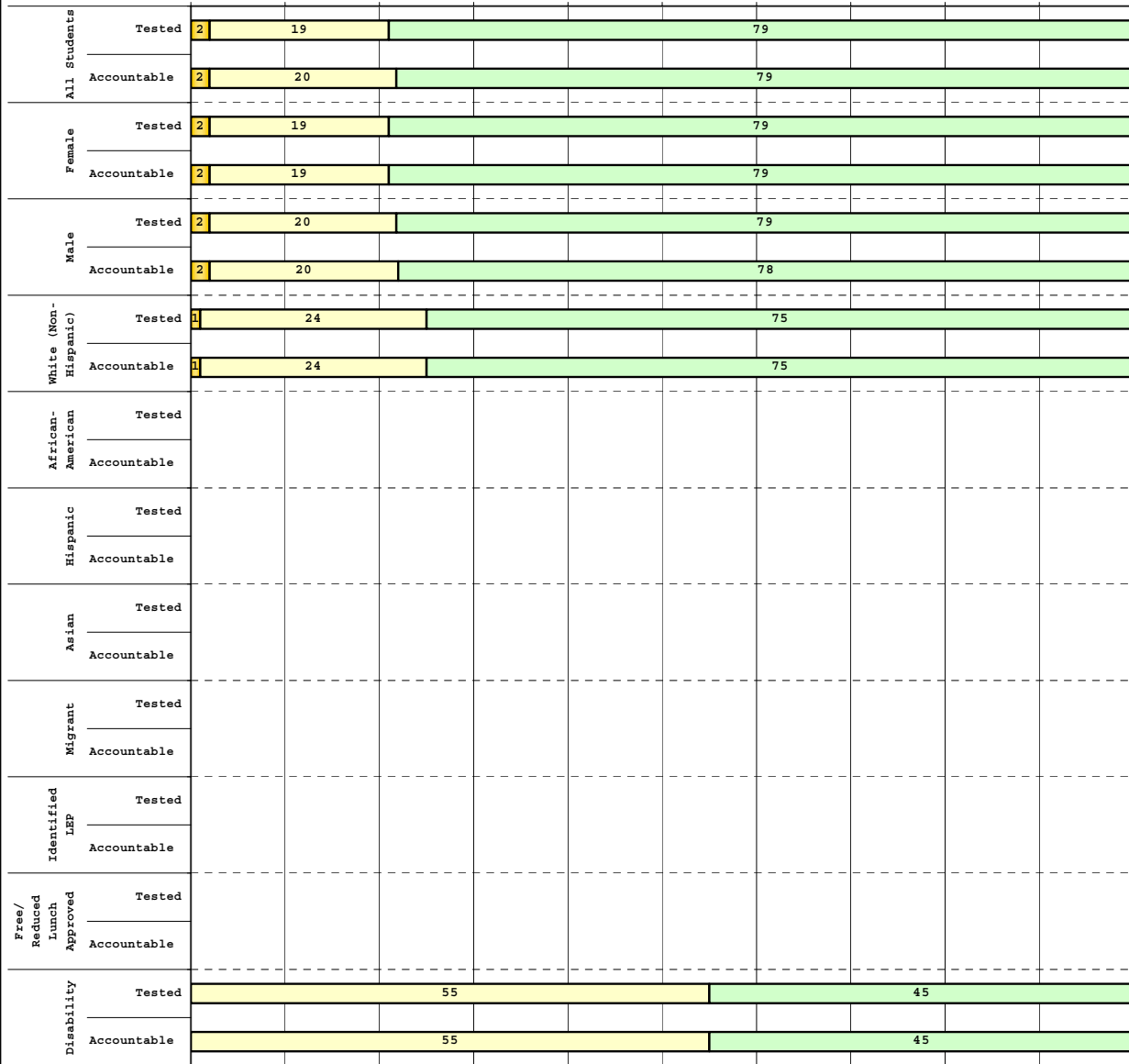
The horizontal bar represents the percent of students scoring at a performance level within a particular year. Percentages may not sum to 100% due to rounding.



**2008-2009**  
**INTERIM PERFORMANCE REPORT**  
**MATHEMATICS DISAGGREGATION**  
**Performance Level Percents**

School: Rosa Parks Elementary School  
 District: Fayette County  
 Code: 165052  
 Grade: 03

0% 10% 20% 30% 40% 50% 60% 70% 80% 90% 100%



Category	N%	A%	P%	D%	P+D%
<b>Tested Students</b>					
Total	0	2	19	79	98.31
Female	0	2	19	79	98.39
Male	0	2	20	79	98.21
White (Non-Hispanic)	0	1	24	75	98.91
African-American	Unreportable*				
Hispanic	Unreportable*				
Asian	Unreportable*				
Other	Unreportable*				
Title I					
Migrant					
Identified LEP	Unreportable*				
Extended Sch Services	Unreportable*				
Gifted/Talented	0	0	5	95	100.00
F/R Lunch Approved	Unreportable*				
Vocational/2 Credits					
Disability	0	0	55	45	100.00
Alternate Assessment					
<b>NCLB Accountable Students</b>					
Total	0	2	20	79	98.29
Female	0	2	19	79	98.39
Male	0	2	20	78	98.18
White (Non-Hispanic)	0	1	24	75	98.91
African-American	Unreportable*				
Hispanic	Unreportable*				
Asian	Unreportable*				
Other	Unreportable*				
Title I					
Migrant					
Identified LEP	Unreportable*				
Extended Sch Services	Unreportable*				
Gifted/Talented	0	0	5	95	100.00
F/R Lunch Approved	Unreportable*				
Vocational/2 Credits					
Disability	0	0	55	45	100.00
Alternate Assessment					

<span style="display:inline-block; width:10px; height:10px; background-color:yellow; border:1px solid black;"></span> Novice
<span style="display:inline-block; width:10px; height:10px; background-color:orange; border:1px solid black;"></span> Apprentice
<span style="display:inline-block; width:10px; height:10px; background-color:lightgreen; border:1px solid black;"></span> Proficient
<span style="display:inline-block; width:10px; height:10px; background-color:lightblue; border:1px solid black;"></span> Distinguished

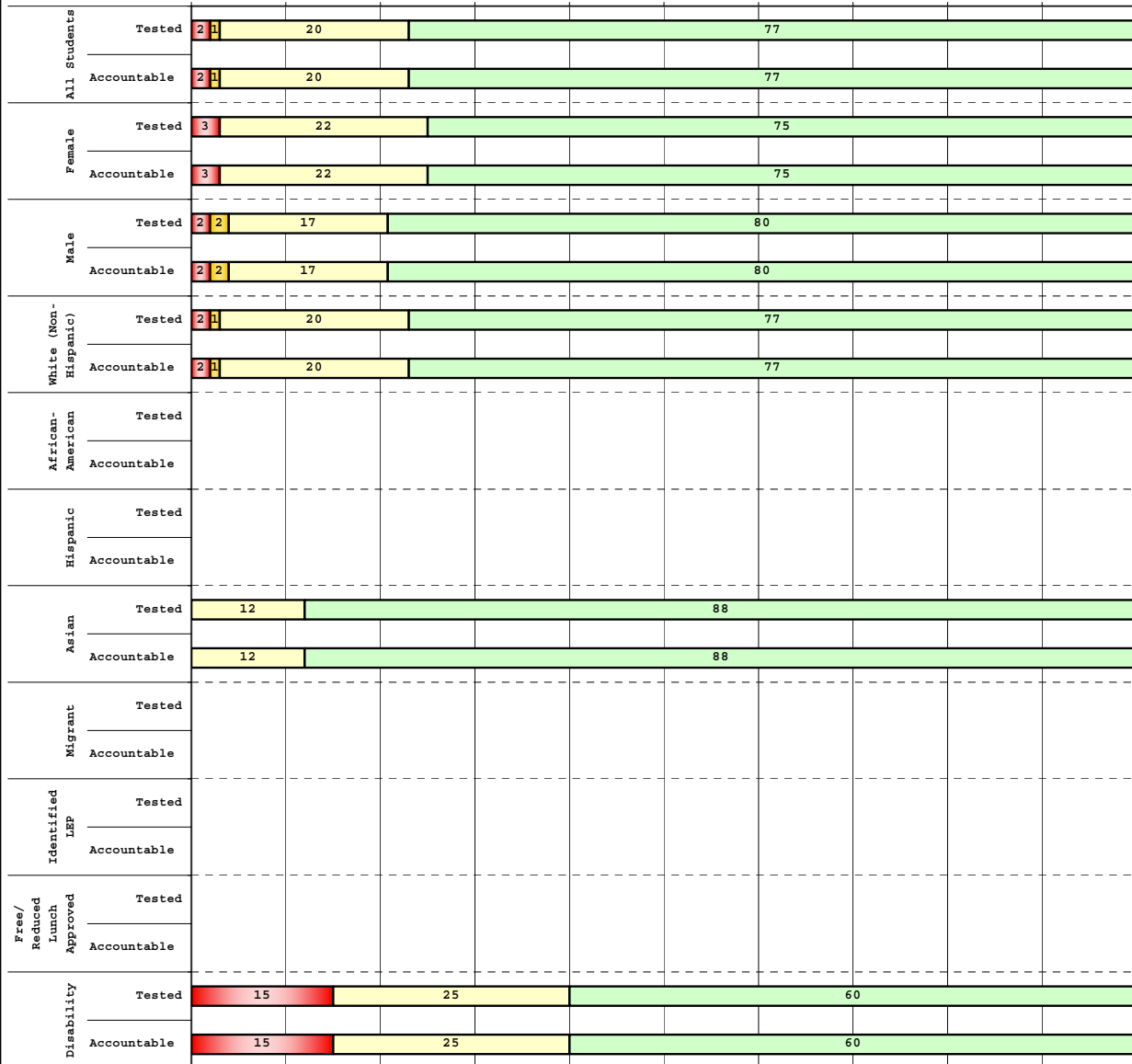
Percentage may not sum to 100% due to rounding. 'Unreportable\*' indicates subpopulations with fewer than 10 students or subpopulations where all students score at the same performance level.



**2008-2009  
INTERIM PERFORMANCE REPORT  
MATHEMATICS DISAGGREGATION  
Performance Level Percents**

School: Rosa Parks Elementary School  
District: Fayette County  
Code: 165052  
Grade: 04

0% 10% 20% 30% 40% 50% 60% 70% 80% 90% 100%



Tested Students					
	N%	A%	P%	D%	P+D%
Total	2	1	20	77	96.92
Female	3	0	22	75	97.37
Male	2	2	17	80	96.30
White (Non-Hispanic)	2	1	20	77	97.22
African-American	Unreportable*				
Hispanic	Unreportable*				
Asian	0	0	12	88	100.00
Other	Unreportable*				
Title I	Unreportable*				
Migrant	Unreportable*				
Identified LEP	Unreportable*				
Extended Sch Services	Unreportable*				
Gifted/Talented	0	0	2	98	100.00
F/R Lunch Approved	Unreportable*				
Vocational/2 Credits	Unreportable*				
Disability	15	0	25	60	85.00
Alternate Assessment	Unreportable*				
NCLB Accountable Students					
Total	2	1	20	77	96.92
Female	3	0	22	75	97.37
Male	2	2	17	80	96.30
White (Non-Hispanic)	2	1	20	77	97.22
African-American	Unreportable*				
Hispanic	Unreportable*				
Asian	0	0	12	88	100.00
Other	Unreportable*				
Title I	Unreportable*				
Migrant	Unreportable*				
Identified LEP	Unreportable*				
Extended Sch Services	Unreportable*				
Gifted/Talented	0	0	2	98	100.00
F/R Lunch Approved	Unreportable*				
Vocational/2 Credits	Unreportable*				
Disability	15	0	25	60	85.00
Alternate Assessment	Unreportable*				

<span style="color:red">■</span> Novice
<span style="color:orange">■</span> Apprentice
<span style="color:green">■</span> Proficient
<span style="color:lightgreen">■</span> Distinguished

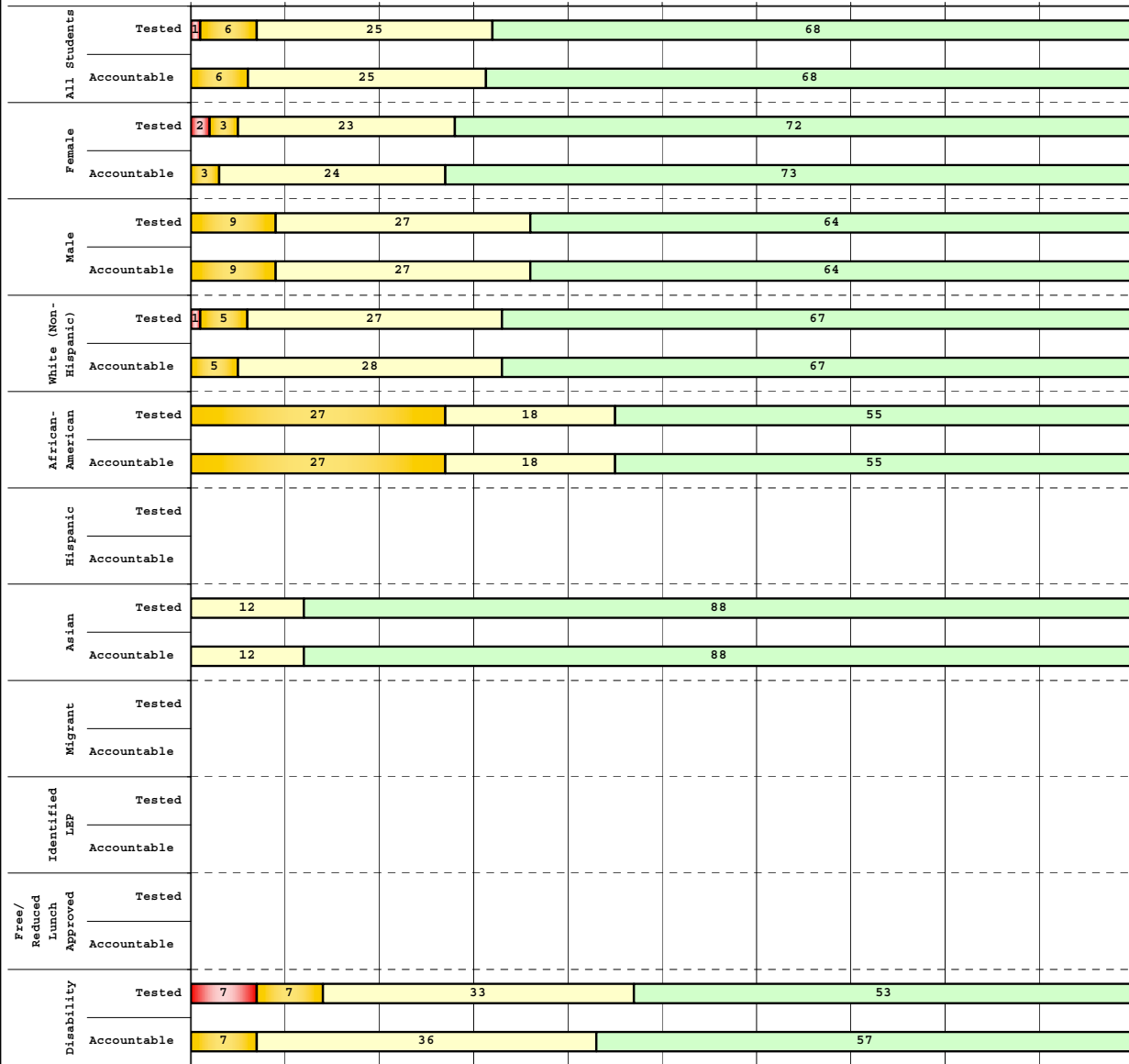
Percentage may not sum to 100% due to rounding. 'Unreportable\*' indicates subpopulations with fewer than 10 students or subpopulations where all students score at the same performance level.



2008-2009  
**INTERIM PERFORMANCE REPORT**  
**MATHEMATICS DISAGGREGATION**  
**Performance Level Percents**

School: Rosa Parks Elementary School  
 District: Fayette County  
 Code: 165052  
 Grade: 05

0% 10% 20% 30% 40% 50% 60% 70% 80% 90% 100%



	N%	A%	P%	D%	P+D%
<b>Tested Students</b>					
Total	1	6	25	68	93.10
Female	2	3	23	72	95.00
Male	0	9	27	64	91.07
White (Non-Hispanic)	1	5	27	67	94.05
African-American	0	27	18	55	72.73
Hispanic	Unreportable*				
Asian	0	0	12	88	100.00
Other	Unreportable*				
Title I					
Migrant					
Identified LEP	Unreportable*				
Extended Sch Services	Unreportable*				
Gifted/Talented	0	0	6	94	100.00
F/R Lunch Approved	Unreportable*				
Vocational/2 Credits					
Disability	7	7	33	53	86.67
Alternate Assessment					
<b>NCLB Accountable Students</b>					
Total	0	6	25	68	93.86
Female	0	3	24	73	96.61
Male	0	9	27	64	90.91
White (Non-Hispanic)	0	5	28	67	95.12
African-American	0	27	18	55	72.73
Hispanic	Unreportable*				
Asian	0	0	12	88	100.00
Other	Unreportable*				
Title I					
Migrant					
Identified LEP	Unreportable*				
Extended Sch Services	Unreportable*				
Gifted/Talented	0	0	6	94	100.00
F/R Lunch Approved	Unreportable*				
Vocational/2 Credits					
Disability	0	7	36	57	92.86
Alternate Assessment					

■ Novice  
■ Apprentice  
■ Proficient  
■ Distinguished

Percentage may not sum to 100% due to rounding. 'Unreportable\*' indicates subpopulations with fewer than 10 students or subpopulations where all students score at the same performance level.



**2008-2009**  
**INTERIM PERFORMANCE REPORT**  
**MATHEMATICS CORE CONTENT**

School: Rosa Parks Elementary School  
 District: Fayette County  
 Code: 165052  
 Grade: 03

	No. Items	No. Observations	SCHOOL								STATE								School -State Mean
			Percents						Mean	Std. Err.	Percents						Mean		
			B	0	1	2	3	4					No. Observations	B	0	1		2	3
<b>OPEN RESPONSE</b>																			
1.x.x - Number Prop Oper	5	290	0	4	23	32	22	19	2.3	0.1	125,243	0	21	35	26	10	8	1.5	0.8
2.x.x - Measurement	1	18	0	6	11	28	33	22	2.6	0.3	8,325	0	25	5	30	14	25	2.1	0.5
3.x.x - Geometry	2	42	0	2	12	24	19	43	2.9	0.2	16,777	0	8	24	35	13	20	2.1	0.8
4.x.x - Data Analysis & Probabilit	1	117	0	1	3	10	26	60	3.4	0.1	50,106	0	9	13	19	27	32	2.6	0.8
5.x.x - Algebraic Thinking	2	136	0	1	3	10	28	58	3.4	0.1	58,404	0	9	14	19	28	31	2.6	0.8
<b>MULTIPLE CHOICE</b>																			
1.x.x - Number Prop Oper	32	1,894	Correct	Incorrect	Omit/Mult				0.91	0.01	810,106	Correct	Incorrect	Omit/Mult				0.74	0.17
2.x.x - Measurement	7	426	91	9	0				0.93	0.02	183,647	74	26	0				0.81	0.12
3.x.x - Geometry	18	936	93	7	0				0.92	0.01	400,848	81	18	0				0.85	0.07
4.x.x - Data Analysis & Probabilit	8	449	92	8	0				0.87	0.02	192,126	85	15	0				0.69	0.18
5.x.x - Algebraic Thinking	11	507	87	13	0				0.91	0.02	217,089	69	31	0				0.78	0.13



**2008-2009**  
**INTERIM PERFORMANCE REPORT**  
**MATHEMATICS CORE CONTENT**

School: Rosa Parks Elementary School  
 District: Fayette County  
 Code: 165052  
 Grade: 04

	No. Items	No. Observations	SCHOOL								Std. Err.	No. Observations	STATE								School -State Mean
			B	0	1	2	3	4	Mean	B			0	1	2	3	4	Mean			
<b>OPEN RESPONSE</b>																					
1.x.x - Number Prop Oper	4	194	0	6	8	23	28	35	2.8	0.1	73,656	0	17	24	29	19	12	1.9	0.9		
2.x.x - Measurement	1	21	0	29	5	10	10	48	2.4	0.3	8,195	0	43	13	10	20	13	1.5	0.9		
3.x.x - Geometry	2	153	0	3	10	16	20	50	3.1	0.1	57,352	0	11	20	17	19	33	2.4	0.7		
4.x.x - Data Analysis & Probabilit	1	21	0	0	19	10	62	10	2.6	0.2	8,152	0	5	36	29	23	6	1.9	0.7		
5.x.x - Algebraic Thinking	2	152	0	1	16	27	36	20	2.6	0.1	57,508	0	5	27	32	25	11	2.1	0.5		
<b>MULTIPLE CHOICE</b>																					
1.x.x - Number Prop Oper	31	1,756	88	12	0				0.88	0.01	664,194	67	33	0				0.67	0.21		
2.x.x - Measurement	7	366	85	15	0				0.85	0.03	139,170	62	38	0				0.62	0.23		
3.x.x - Geometry	14	736	90	10	0				0.90	0.02	278,460	77	23	0				0.77	0.13		
4.x.x - Data Analysis & Probabilit	12	802	89	11	0				0.89	0.02	303,394	71	29	0				0.71	0.18		
5.x.x - Algebraic Thinking	11	673	85	15	0				0.85	0.02	253,829	69	31	0				0.69	0.16		



**2008-2009**  
**INTERIM PERFORMANCE REPORT**  
**MATHEMATICS CORE CONTENT**

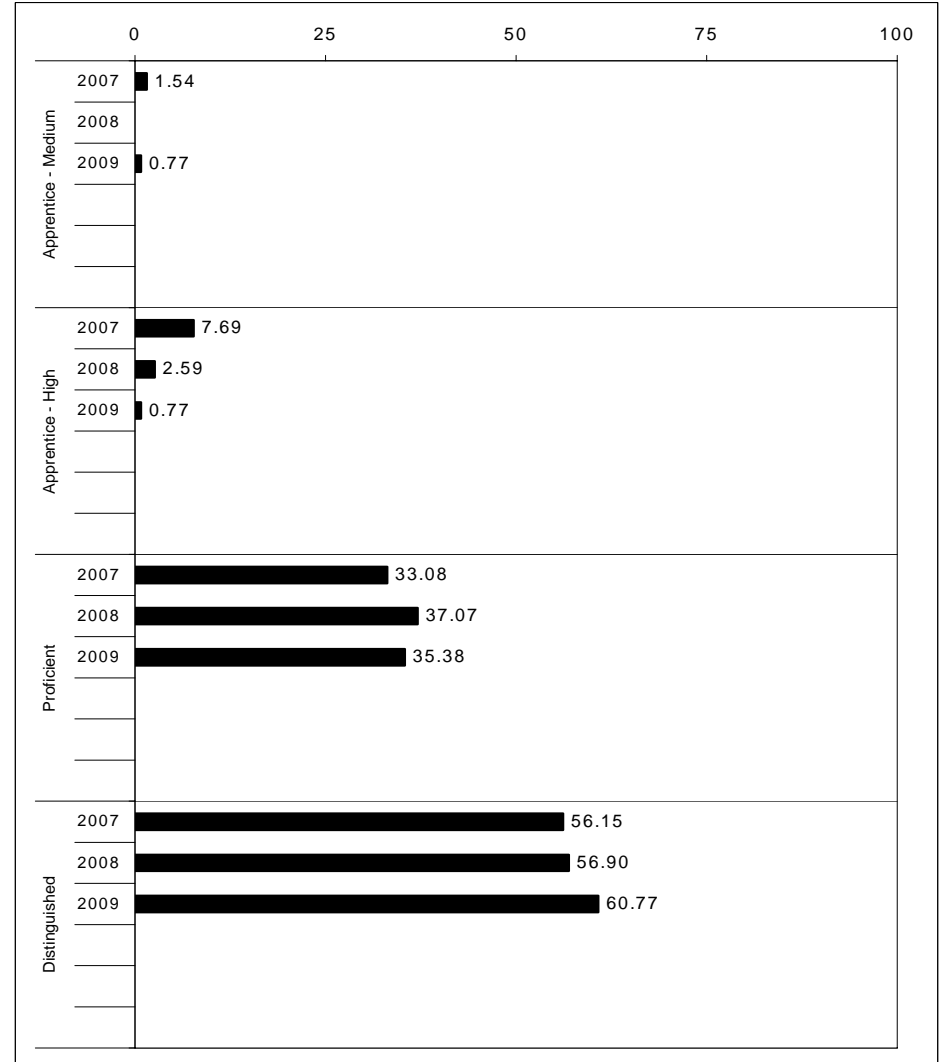
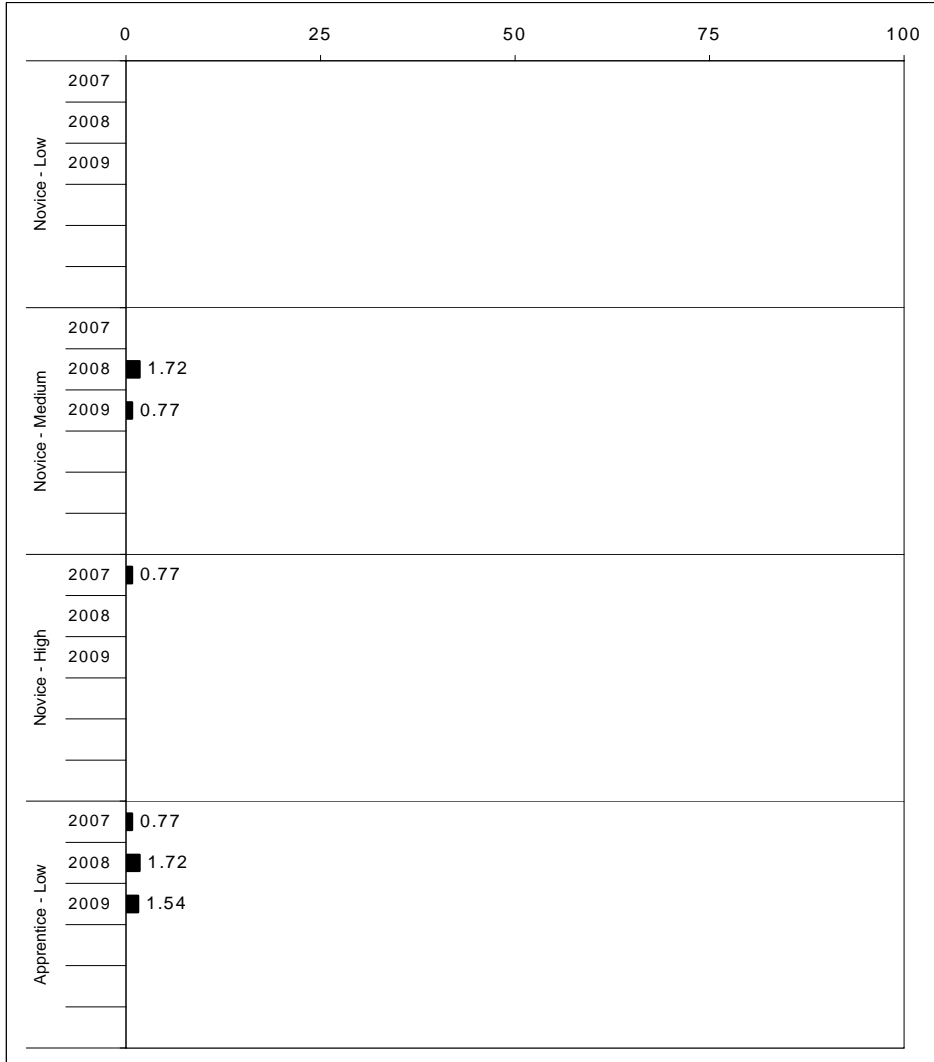
School: Rosa Parks Elementary School  
 District: Fayette County  
 Code: 165052  
 Grade: 05

	No. Items	No. Observations	SCHOOL								Mean	Std. Err.	No. Observations	STATE						Mean	School -State Mean
			B	0	1	2	3	4	Mean	B				0	1	2	3	4	Mean		
<b>OPEN RESPONSE</b>																					
1.x.x - Number Prop Oper	4	170	0	1	5	12	25	57	3.3	0.1	73,199	0	8	20	18	25	29	2.5	0.8		
2.x.x - Measurement	1	18	0	0	39	6	22	33	2.5	0.3	8,380	0	37	30	13	10	11	1.3	1.2		
3.x.x - Geometry	2	135	0	1	12	25	33	29	2.8	0.1	56,900	0	6	24	30	26	14	2.2	0.6		
4.x.x - Data Analysis & Probabilit	1	114	0	5	8	7	23	57	3.2	0.1	48,828	0	15	18	15	17	35	2.4	0.8		
5.x.x - Algebraic Thinking	1	19	0	0	0	11	16	74	3.6	0.3	8,005	0	13	15	20	17	35	2.5	1.1		
<b>MULTIPLE CHOICE</b>																					
1.x.x - Number Prop Oper	29	1,500	Correct	Incorrect	Omit/Mult				0.85	0.01	643,144	Correct	Incorrect	Omit/Mult				0.63	0.22		
2.x.x - Measurement	9	361	85	15	0				0.82	0.03	154,489	63	37	0				0.62	0.20		
3.x.x - Geometry	14	645	82	18	0				0.88	0.02	276,516	62	38	0				0.78	0.10		
4.x.x - Data Analysis & Probabilit	11	591	88	12	0				0.79	0.02	252,212	78	22	0				0.64	0.15		
5.x.x - Algebraic Thinking	10	570	79	22	0				0.84	0.02	244,140	64	36	0				0.65	0.19		



2008-2009  
**INTERIM PERFORMANCE REPORT**  
**SCIENCE TREND DATA**  
**Performance Level Percents**

School: Rosa Parks Elementary School  
 District: Fayette County  
 Code: 165052  
 Grade: 04



The horizontal bar represents the percent of students scoring at a performance level within a particular year. Percentages may not sum to 100% due to rounding.



**2008-2009  
INTERIM PERFORMANCE REPORT  
SCIENCE DISAGGREGATION  
Performance Level Percents**

School: Rosa Parks Elementary School  
District: Fayette County  
Code: 165052  
Grade: 04

		0%	10%	20%	30%	40%	50%	60%	70%	80%	90%	100%	N%	A%	P%	D%	P+D%	
All Students	Tested	1	3	35				61					<b>Tested Students</b>					
	100 Days	1	3	35				61					Total	1	3	35	61	96.15
Female	Tested	4	37				59					Female	0	4	37	59	96.05	
	100 Days	4	37				59					Male	2	2	33	63	96.30	
Male	Tested	2	2	33				63					White (Non-Hispanic)	1	2	35	62	97.22
	100 Days	2	2	33				63					African-American	Unreportable*				
White (Non-Hispanic)	Tested	1	2	35				62					Hispanic					
	100 Days	1	2	35				62					Asian	0	6	35	59	94.12
African-American	Tested																	
	100 Days																	
Hispanic	Tested																	
	100 Days																	
Asian	Tested	6	35				59					Other	Unreportable*					
	100 Days	6	35				59					Title I						
Migrant	Tested																	
	100 Days																	
Identified LEP	Tested																	
	100 Days																	
Free/Reduced Lunch Approved	Tested																	
	100 Days																	
Disability	Tested	5	10	40				45					Migrant					
	100 Days	5	10	40				45					Identified LEP	Unreportable*				
													Extended Sch Services	Unreportable*				
													Gifted/Talented	0	0	14	86	100.00
													F/R Lunch Approved	Unreportable*				
													Vocational/2 Credits					
													Disability	5	10	40	45	85.00
													Alternate Assessment					
													<b>100 Day Students</b>					
													Total	1	3	35	61	96.15
													Female	0	4	37	59	96.05
													Male	2	2	33	63	96.30
													White (Non-Hispanic)	1	2	35	62	97.22
													African-American	Unreportable*				
													Hispanic					
													Asian	0	6	35	59	94.12
													Other	Unreportable*				
													Title I					
													Migrant					
													Identified LEP	Unreportable*				
													Extended Sch Services	Unreportable*				
													Gifted/Talented	0	0	14	86	100.00
													F/R Lunch Approved	Unreportable*				
													Vocational/2 Credits					
													Disability	5	10	40	45	85.00
													Alternate Assessment					

■	Novice
■	Apprentice
■	Proficient
■	Distinguished

Percentage may not sum to 100% due to rounding. 'Unreportable\*' indicates subpopulations with fewer than 10 students or subpopulations where all students score at the same performance level.



**2008-2009**  
**INTERIM PERFORMANCE REPORT**  
**SCIENCE CORE CONTENT**

School: Rosa Parks Elementary School  
 District: Fayette County  
 Code: 165052  
 Grade: 04

	No. Items	No. Observations	SCHOOL								Std. Err.	No. Observations	STATE								School -State Mean
			B	0	1	2	3	4	Mean	B			0	1	2	3	4	Mean			
<b>OPEN RESPONSE</b>																					
1.x.x - Physical Science	2	44	0	2	7	57	20	14	2.4	0.2	16,337	0	17	19	42	17	5	1.7	0.7		
2.x.x - Earth Space Science	3	174	0	4	11	37	42	5	2.3	0.1	65,658	0	12	22	35	26	4	1.9	0.4		
3.x.x - Biological Science	3	172	0	1	3	24	51	22	2.9	0.1	65,506	0	2	11	33	44	9	2.5	0.4		
4.x.x - Unifying Concepts	2	152	0	0	5	20	47	29	3.0	0.1	57,508	0	3	13	33	35	15	2.5	0.5		
<b>MULTIPLE CHOICE</b>																					
1.x.x - Physical Science	18	1,040	92		8		0		0.92	0.01	393,336	82		18		0		0.81	0.11		
2.x.x - Earth Space Science	19	1,061	87		14		0		0.87	0.01	401,488	71		29		0		0.71	0.16		
3.x.x - Biological Science	22	1,235	87		13		0		0.87	0.01	467,138	78		22		0		0.78	0.09		
4.x.x - Unifying Concepts	14	845	95		5		0		0.95	0.01	319,534	84		15		0		0.84	0.11		



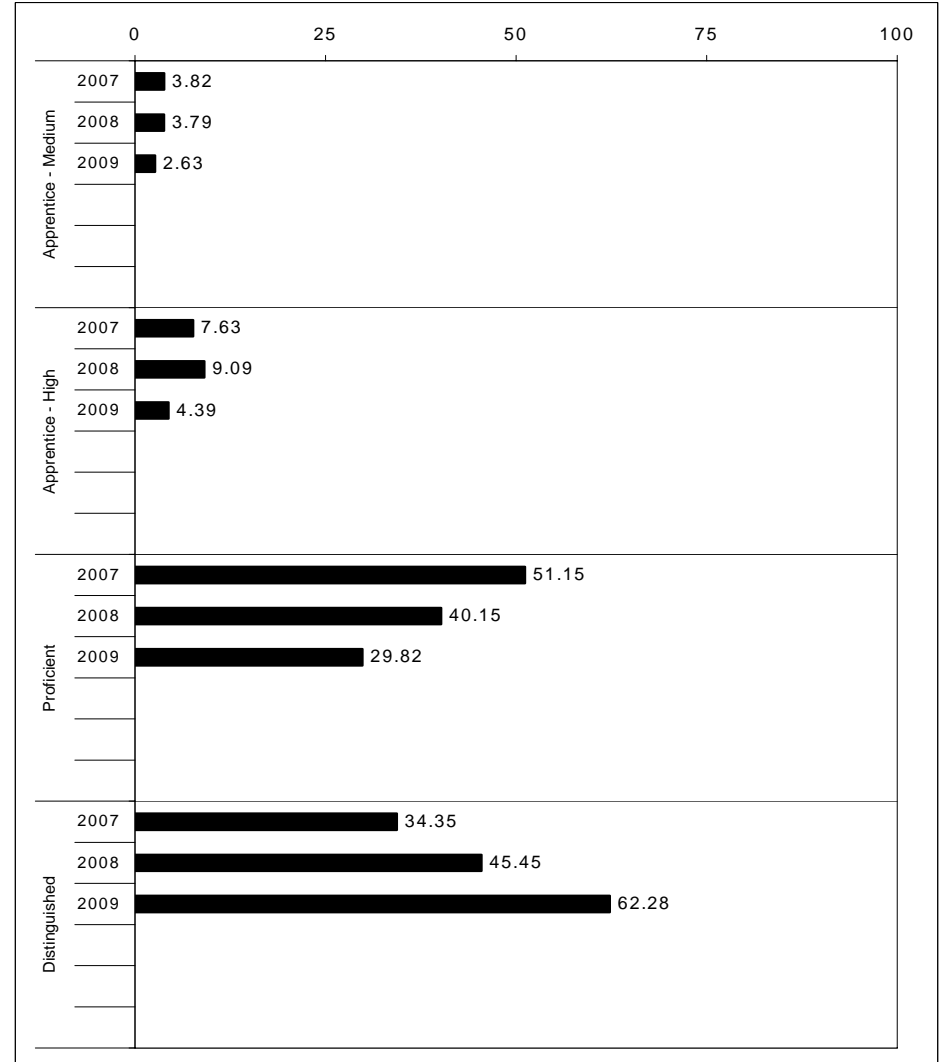
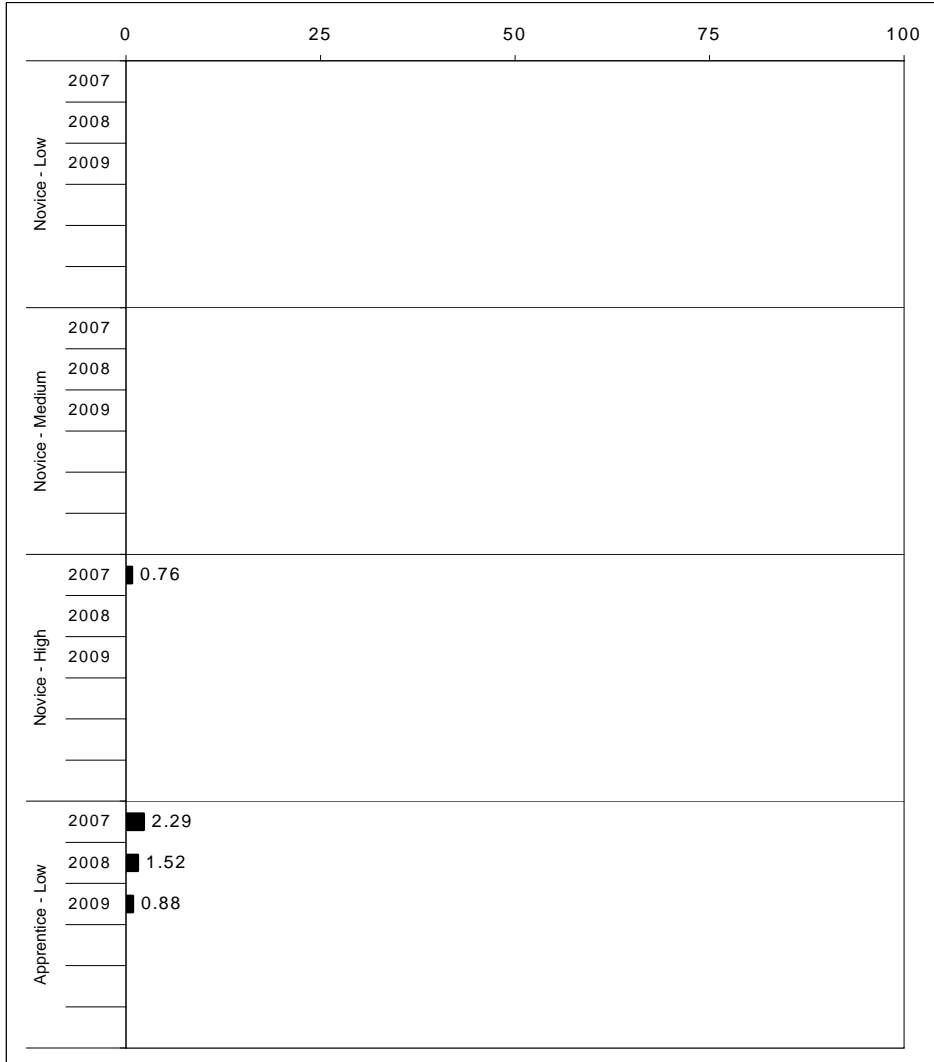
2008-2009  
**INTERIM PERFORMANCE REPORT**  
**SOCIAL STUDIES TREND DATA**  
**Performance Level Percents**

School: Rosa Parks Elementary School

District: Fayette County

Code: 165052

Grade: 05

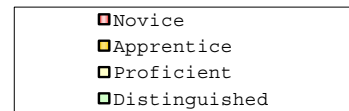
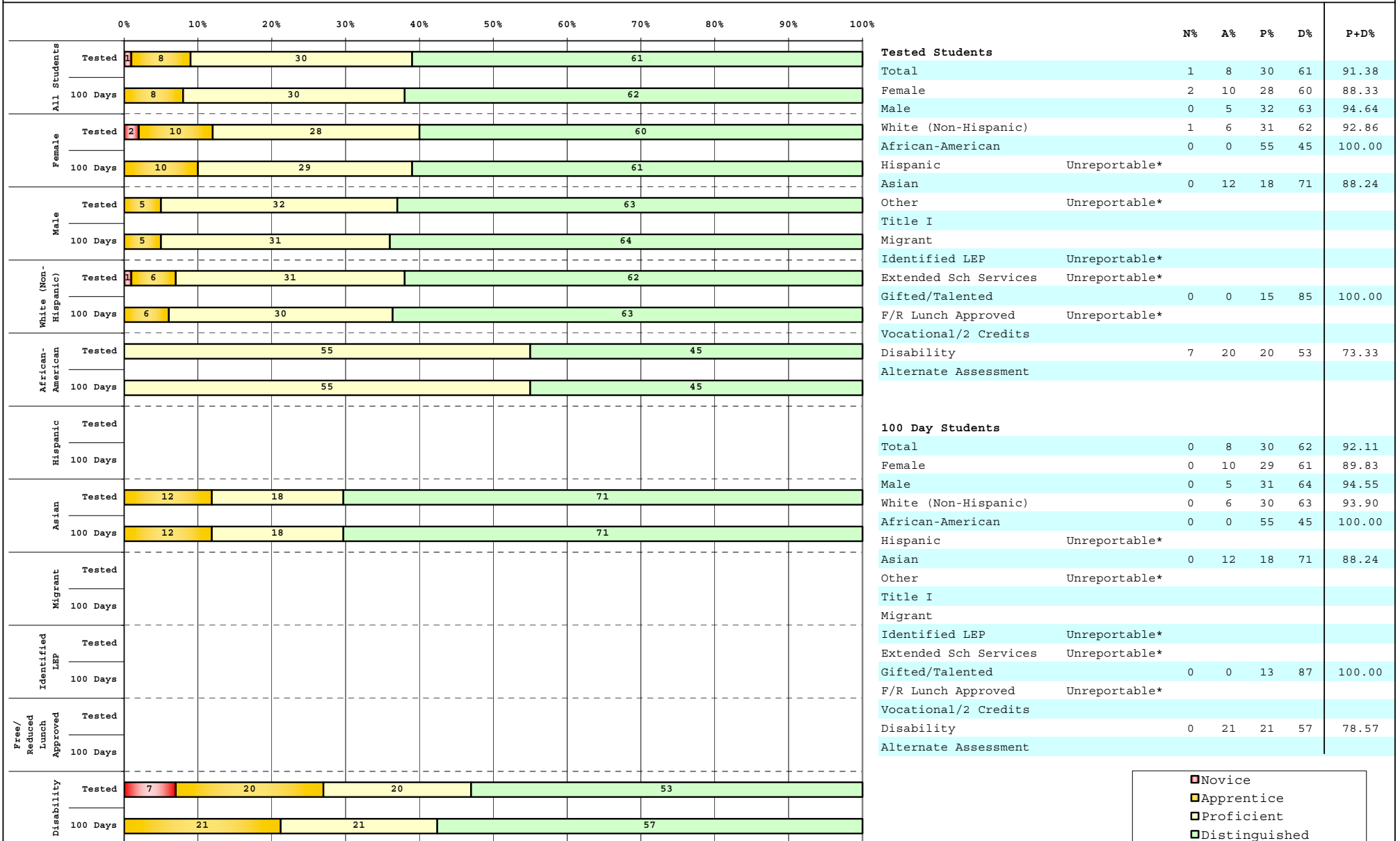


The horizontal bar represents the percent of students scoring at a performance level within a particular year. Percentages may not sum to 100% due to rounding.



2008-2009  
**INTERIM PERFORMANCE REPORT**  
**SOCIAL STUDIES DISAGGREGATION**  
**Performance Level Percents**

School: Rosa Parks Elementary School  
 District: Fayette County  
 Code: 165052  
 Grade: 05



Percentage may not sum to 100% due to rounding. 'Unreportable\*' indicates subpopulations with fewer than 10 students or subpopulations where all students score at the same performance level.



**2008-2009**  
**INTERIM PERFORMANCE REPORT**  
**SOCIAL STUDIES CORE CONTENT**

School: Rosa Parks Elementary School  
 District: Fayette County  
 Code: 165052  
 Grade: 05

	No. Items	No. Observations	SCHOOL								Std. Err.	No. Observations	STATE								School -State Mean
			B	0	1	2	3	4	Mean	B			0	1	2	3	4	Mean			
<b>OPEN RESPONSE</b>																					
1.x.x - Government & Civics	2	131	0	0	16	38	26	20	2.5	0.1	56,903	0	5	37	45	10	2	1.7	0.8		
2.x.x - Cultures & Societies	1	21	0	0	0	38	29	33	3.0	0.2	8,151	0	4	21	56	15	4	1.9	1.1		
3.x.x - Economics	1	114	0	2	11	32	30	25	2.7	0.1	48,828	0	11	33	41	12	3	1.6	1.1		
4.x.x - Geography	2	40	0	5	15	33	25	23	2.5	0.1	16,077	0	9	32	39	17	3	1.7	0.8		
5.x.x - Historical Perspective	3	150	0	0	13	41	29	17	2.5	0.1	65,353	0	7	35	46	10	2	1.7	0.8		
<b>MULTIPLE CHOICE</b>																					
1.x.x - Government & Civics	14	744	81	19	0				0.81	0.02	317,571	66	34	0				0.66	0.15		
2.x.x - Cultures & Societies	11	493	79	21	0				0.79	0.02	211,383	70	30	0				0.69	0.10		
3.x.x - Economics	11	587	88	12	0				0.88	0.02	252,215	73	27	0				0.73	0.15		
4.x.x - Geography	16	875	79	21	0				0.79	0.02	374,337	66	34	0				0.66	0.13		
5.x.x - Historical Perspective	27	1,367	84	16	0				0.84	0.01	586,076	69	31	0				0.69	0.15		



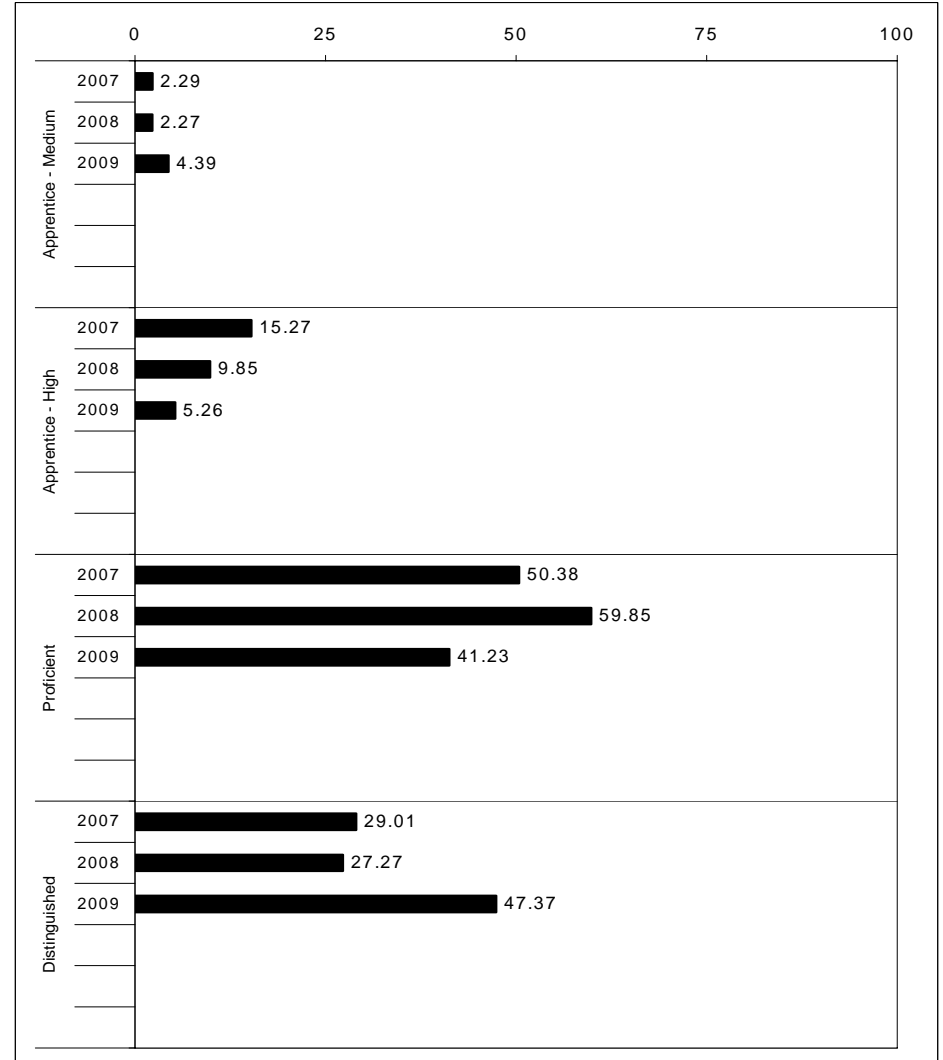
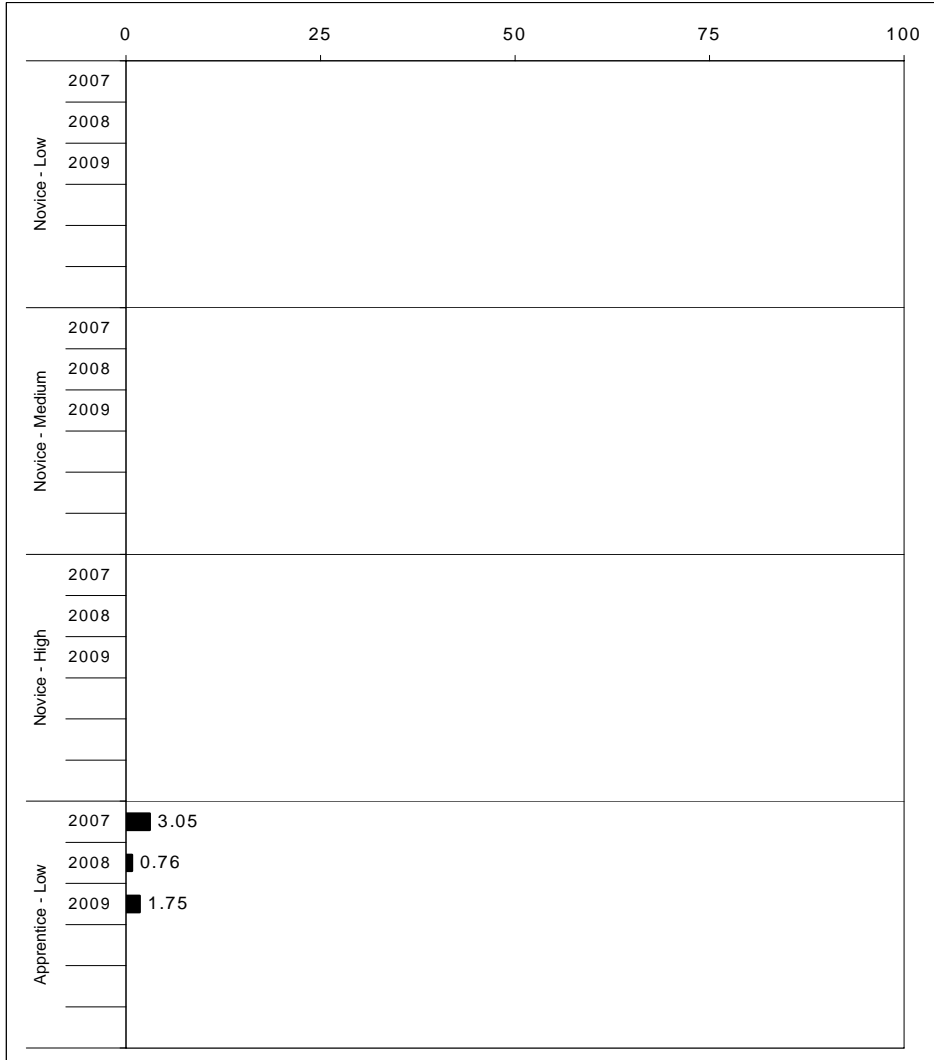
2008-2009  
**INTERIM PERFORMANCE REPORT**  
**WRITING ON-DEMAND TREND DATA**  
**Performance Level Percents**

School: Rosa Parks Elementary School

District: Fayette County

Code: 165052

Grade: 05



The horizontal bar represents the percent of students scoring at a performance level within a particular year. Percentages may not sum to 100% due to rounding.



2008-2009  
**INTERIM PERFORMANCE REPORT**  
**WRITING ON-DEMAND DISAGGREGATION**  
**Performance Level Percents**

School: Rosa Parks Elementary School  
 District: Fayette County  
 Code: 165052  
 Grade: 05

		0%	10%	20%	30%	40%	50%	60%	70%	80%	90%	100%	N%	A%	P%	D%	P+D%	
All Students	Tested												<b>Tested Students</b>					
	100 Days												Total	0	12	41	47	87.93
Female	Tested												Female	0	13	35	52	86.67
	100 Days												Male	0	11	48	41	89.29
Male	Tested												White (Non-Hispanic)	0	11	45	44	89.29
	100 Days												African-American	0	9	36	55	90.91
White (Non-Hispanic)	Tested												Hispanic	Unreportable*				
	100 Days												Asian	0	12	35	53	88.24
African-American	Tested												Other	Unreportable*				
	100 Days												Title I					
Hispanic	Tested												Migrant					
	100 Days												Identified LEP	Unreportable*				
Asian	Tested												Extended Sch Services	Unreportable*				
	100 Days												Gifted/Talented	0	0	39	61	100.00
Migrant	Tested												F/R Lunch Approved	Unreportable*				
	100 Days												Vocational/2 Credits					
Identified LEP	Tested												Disability	0	27	40	33	73.33
	100 Days												Alternate Assessment					
Free/Reduced Lunch Approved	Tested												<b>100 Day Students</b>					
	100 Days												Total	0	11	41	47	88.60
Disability	Tested												Female	0	12	36	53	88.14
	100 Days												Male	0	11	47	42	89.09
													White (Non-Hispanic)	0	10	45	45	90.24
													African-American	0	9	36	55	90.91
													Hispanic	Unreportable*				
													Asian	0	12	35	53	88.24
													Other	Unreportable*				
													Title I					
													Migrant					
													Identified LEP	Unreportable*				
													Extended Sch Services	Unreportable*				
													Gifted/Talented	0	0	38	62	100.00
													F/R Lunch Approved	Unreportable*				
													Vocational/2 Credits					
													Disability	0	21	43	36	78.57
													Alternate Assessment					

<span style="color: red;">■</span> Novice
<span style="color: orange;">■</span> Apprentice
<span style="color: yellow;">■</span> Proficient
<span style="color: green;">■</span> Distinguished

Percentage may not sum to 100% due to rounding. 'Unreportable\*' indicates subpopulations with fewer than 10 students or subpopulations where all students score at the same performance level.



**2008-2009**  
**INTERIM PERFORMANCE REPORT**  
**WRITING ON-DEMAND CORE CONTENT**

School: Rosa Parks Elementary School  
 District: Fayette County  
 Code: 165052  
 Grade: 05

WRITING PROMPT	SCHOOL												STATE												School
	No. Observations	Percents											Mean	Percents											Mean
	B	0	1	2	3	4	5	6	7	8		B	0	1	2	3	4	5	6	7	8				
Inform																									
1.X.X - Content	37	0	0	0	3	3	8	8	43	14	22	6.14	0	1	1	9	9	34	18	21	4	2	4.43	1.71	
2.X.X - Structure	37	0	0	0	3	3	8	14	46	5	22	6.00	0	1	2	9	10	35	19	19	3	1	4.33	1.67	
3.X.X - Convention	37	0	0	0	3	3	11	8	49	14	14	5.92	0	0	0	12	11	34	19	19	3	1	4.38	1.54	
Narrate for a purpose																									
1.X.X - Content	38	0	0	0	0	0	8	18	47	16	11	6.03	0	1	1	10	9	36	18	21	3	1	4.35	1.68	
2.X.X - Structure	38	0	0	0	0	0	13	16	45	18	8	5.92	0	1	2	10	10	37	17	19	3	1	4.27	1.65	
3.X.X - Convention	38	0	0	0	0	0	13	18	45	18	5	5.84	0	0	0	12	10	36	18	19	3	1	4.33	1.51	
Persuade																									
1.X.X - Content	39	0	0	0	5	0	18	10	23	21	23	6.00	0	1	1	8	8	33	19	21	5	3	4.50	1.50	
2.X.X - Structure	39	0	0	0	5	0	18	15	21	18	23	5.92	0	2	2	9	10	33	19	20	5	2	4.42	1.50	
3.X.X - Convention	39	0	0	0	3	3	15	15	23	21	21	5.97	0	0	0	11	10	32	19	20	5	2	4.50	1.47	

MULTIPLE CHOICE	No. Items	SCHOOL							STATE							School
		No. Observations	Percents			Mean	Std. Err.	No. Observations	Percents			Mean	-State Mean			
		Correct	Incorrect	Omit/Mult				Correct	Incorrect	Omit/Mult						
4.x.x - Writing Process	52	1,368	86	14	0	0.86	0.01	585,936	73	27	0	0.73	0.13			
4.10.x - Revising	16	302	79	21	0	0.79	0.03	130,317	66	34	0	0.66	0.13			
4.11.x - Editing	36	1,066	88	12	0	0.88	0.01	455,619	75	24	0	0.75	0.13			