



Interim Performance Report

In March 2009, the Kentucky General Assembly passed Senate Bill 1 (SB1) that was subsequently signed into law by the Governor. SB1 calls for a significant overhaul of the state's assessment and accountability system. The new assessment system begins in the spring of 2012. The school years of 2008-2009, 2009-2010 and 2010-2011 are described in SB1 as an interim period. This three-year period allows Kentucky to develop the new assessment system and to carry on state and federal testing requirements.

The Interim Performance Report includes the Kentucky Core Content Test (KCCT) in Reading (grades 3-8 and 10), Mathematics (grades 3-8 and 11), Science (grades 4, 7 and 11), Social Studies (grades 5, 8 and 11) and Writing On-Demand (grades 5, 8 and 12). The KCCT is based on the Kentucky Core Content for Assessment (Version 4.1) and contains multiple choice and open response questions. The Writing On-Demand test uses writing prompts that require students to craft a piece of writing in a 60 minute period.

The KCCT is developed under the direction of content advisory committees of Kentucky educators who draft, review and select test questions. All test items are reviewed by a bias review committee to enhance the fairness of items for all Kentucky students.

The KCCT continues to fulfill the requirements of the federal statute known as the No Child Left Behind Act of 2001. A separate accountability report for No Child Left Behind (NCLB) is published by the Kentucky Department of Education.

The Interim Performance Report focuses entirely on the five state-required content areas and provides data for schools or districts. The data in this report is not used directly for state accountability; although, these results can fulfill the requirements of Senate Bill 168 from 2002 and may be used by schools or districts for their own local accountability needs.

Performance standards are based on descriptions of Novice, Apprentice, Proficient and Distinguished (NAPD) student performance levels specific to the content area and grade being assessed. The performance standards, in conjunction with Kentucky's Core Content for Assessment, should allow instruction to better focus on the content area to be taught and on how well students must demonstrate achievement in each content area.

Reporting Changes for 2009

Based on SB1, Kentucky will not be reporting state accountability and academic indices as in the past. The report does have several familiar pages with performance level (NAPD) trend, core content and disaggregation data per content area. Districts and schools will still see distributions of how students scored in the Novice (with sublevels), Apprentice (with sublevels), Proficient and Distinguished performance levels.

Confidentiality Changes

Due to federal regulations around the Family Education Rights and Privacy Act (FERPA), the numbers of students have been removed. Though there is a need to report as much data as possible, there is also a paramount need to maintain the confidential aspects of individual scores. When scores are reported in what is commonly called "small cells" where very few students may be categorized, there is the possibility of revealing individual scores when numbers are reported. Numbers are reported to each district in a confidential report that accompanies the public Interim Performance Report.

2008-2009

INTERIM PERFORMANCE REPORT

School: Northern Elementary School

District: Fayette County

Code: 165077

Grade: PRIMARY-05

CONTENTS OF THIS REPORT

| | |
|------------------------|-------|
| Introduction | 1 |
| Academic Trend Data | |
| Reading Results | 2-8 |
| Mathematics Results | 9-15 |
| Science Results | 16-18 |
| Social Studies Results | 19-21 |
| Writing Results | 22-24 |

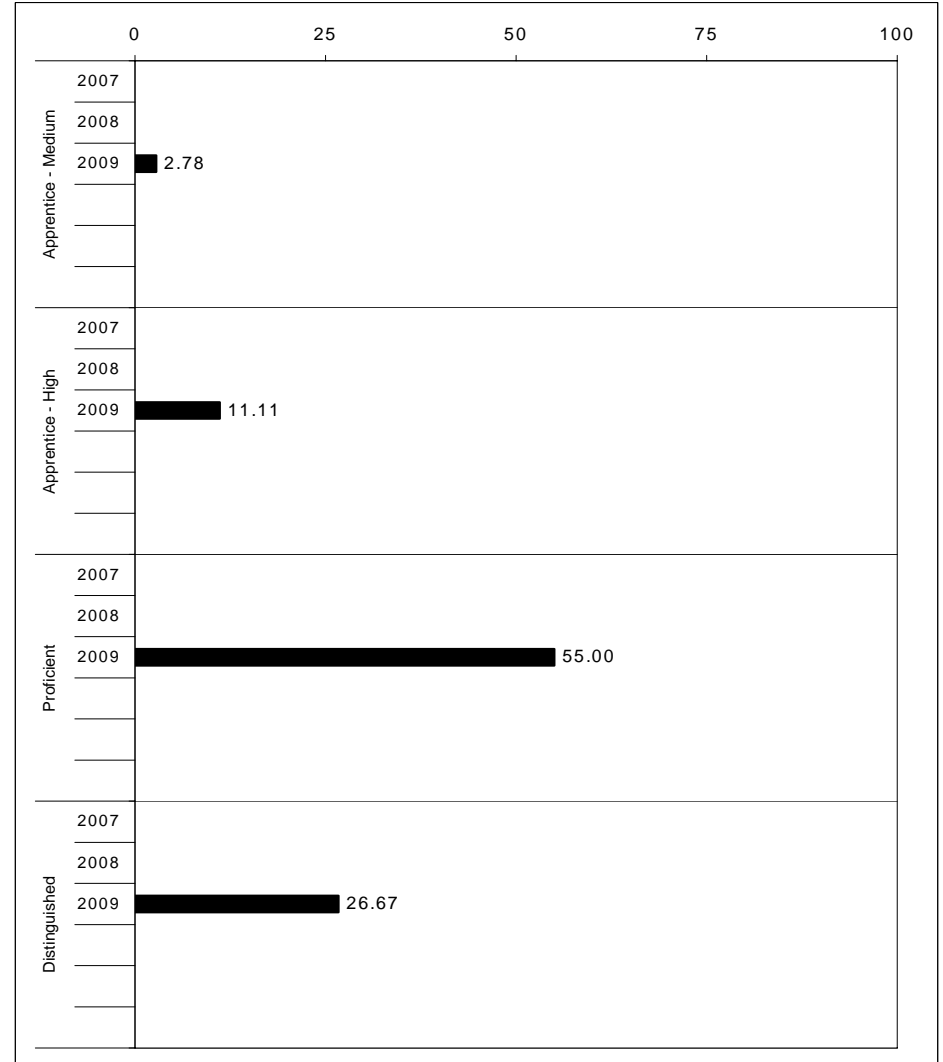
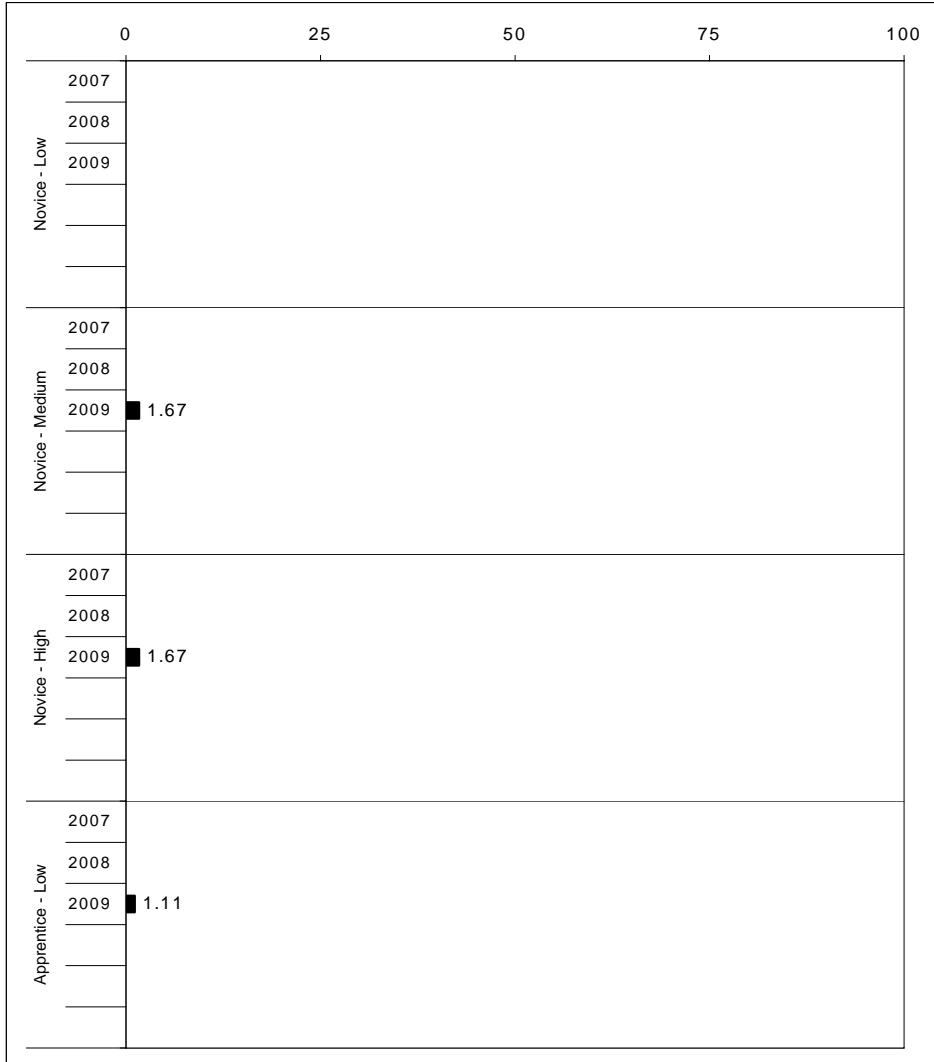
For more information, refer to the 2009 Interim Assessment Interpretative Guide on the Kentucky Department of Education Web site (www.education.ky.gov).





2008-2009
INTERIM PERFORMANCE REPORT
READING TREND DATA
Performance Level Percents

School: Northern Elementary School
 District: Fayette County
 Code: 165077
 Grade: ELEMENTARY



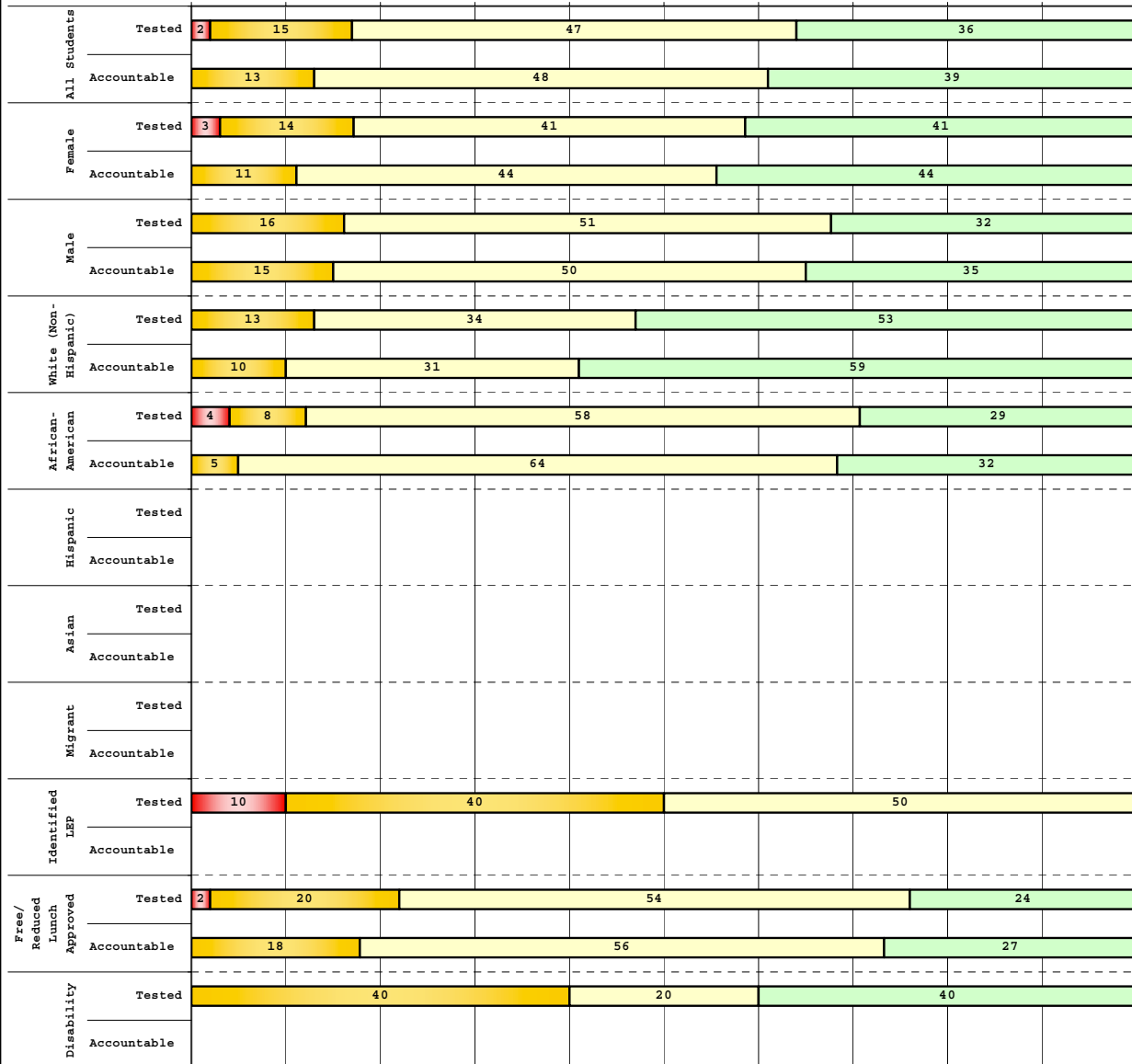
The horizontal bar represents the percent of students scoring at a performance level within a particular year. Percentages may not sum to 100% due to rounding.



**2008-2009
INTERIM PERFORMANCE REPORT
READING DISAGGREGATION
Performance Level Percents**

School: Northern Elementary School
District: Fayette County
Code: 165077
Grade: 03

0% 10% 20% 30% 40% 50% 60% 70% 80% 90% 100%

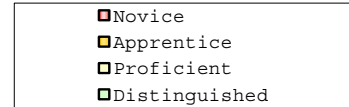


Tested Students

| | N% | A% | P% | D% | P+D% |
|-----------------------|---------------|----|----|----|-------|
| Total | 2 | 15 | 47 | 36 | 83.33 |
| Female | 3 | 14 | 41 | 41 | 82.76 |
| Male | 0 | 16 | 51 | 32 | 83.78 |
| White (Non-Hispanic) | 0 | 13 | 34 | 53 | 87.50 |
| African-American | 4 | 8 | 58 | 29 | 87.50 |
| Hispanic | Unreportable* | | | | |
| Asian | Unreportable* | | | | |
| Other | Unreportable* | | | | |
| Title I | 2 | 15 | 47 | 36 | 83.33 |
| Migrant | Unreportable* | | | | |
| Identified LEP | 10 | 40 | 50 | 0 | 50.00 |
| Extended Sch Services | Unreportable* | | | | |
| Gifted/Talented | Unreportable* | | | | |
| F/R Lunch Approved | 2 | 20 | 54 | 24 | 78.00 |
| Vocational/2 Credits | Unreportable* | | | | |
| Disability | 0 | 40 | 20 | 40 | 60.00 |
| Alternate Assessment | Unreportable* | | | | |

NCLB Accountable Students

| | N% | A% | P% | D% | P+D% |
|-----------------------|---------------|----|----|----|-------|
| Total | 0 | 13 | 48 | 39 | 86.89 |
| Female | 0 | 11 | 44 | 44 | 88.89 |
| Male | 0 | 15 | 50 | 35 | 85.29 |
| White (Non-Hispanic) | 0 | 10 | 31 | 59 | 89.66 |
| African-American | 0 | 5 | 64 | 32 | 95.45 |
| Hispanic | Unreportable* | | | | |
| Asian | Unreportable* | | | | |
| Other | Unreportable* | | | | |
| Title I | 0 | 13 | 48 | 39 | 86.89 |
| Migrant | Unreportable* | | | | |
| Identified LEP | Unreportable* | | | | |
| Extended Sch Services | Unreportable* | | | | |
| Gifted/Talented | Unreportable* | | | | |
| F/R Lunch Approved | 0 | 18 | 56 | 27 | 82.22 |
| Vocational/2 Credits | Unreportable* | | | | |
| Disability | Unreportable* | | | | |
| Alternate Assessment | Unreportable* | | | | |



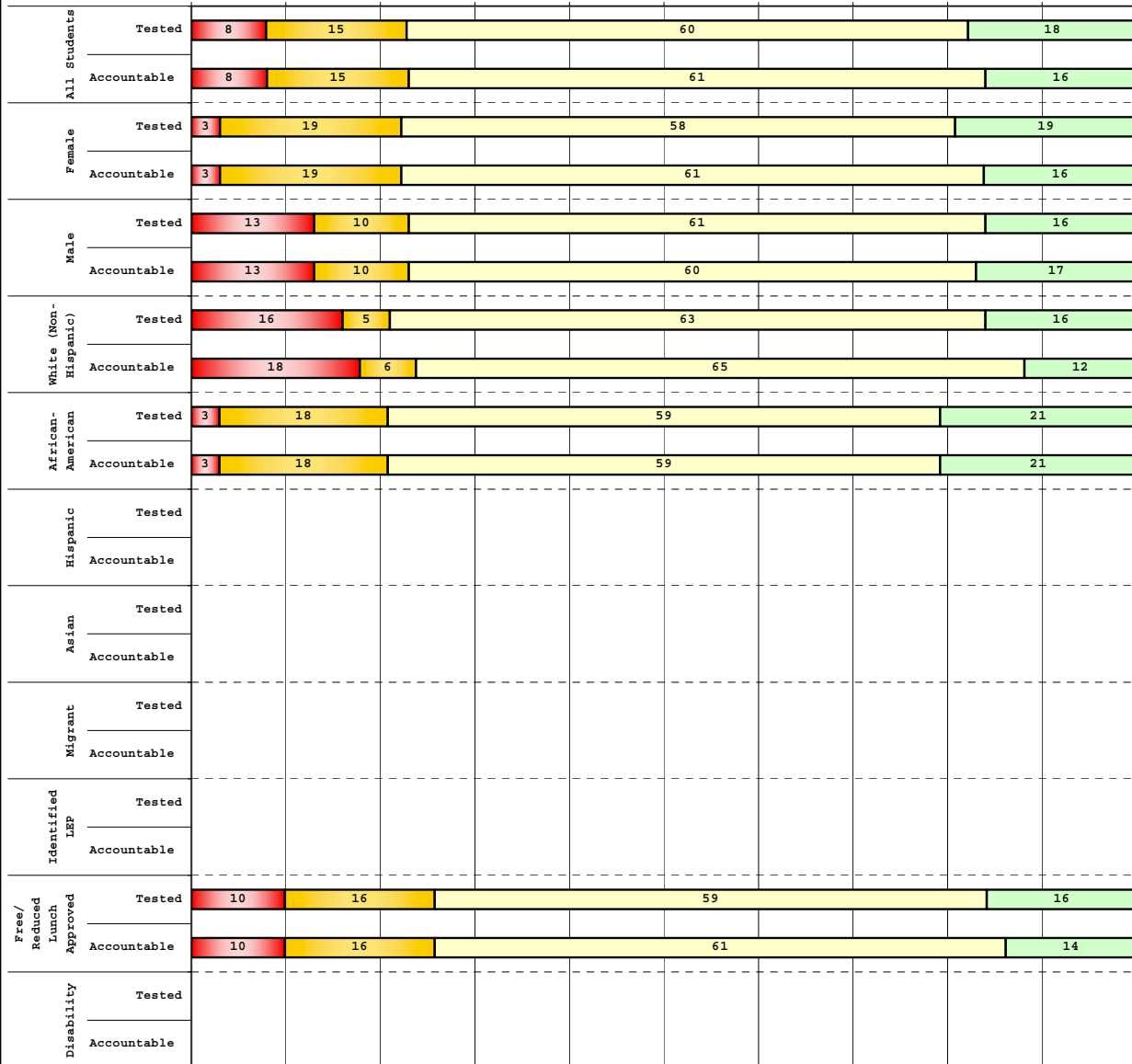
Percentage may not sum to 100% due to rounding. 'Unreportable*' indicates subpopulations with fewer than 10 students or subpopulations where all students score at the same performance level.



**2008-2009
INTERIM PERFORMANCE REPORT
READING DISAGGREGATION
Performance Level Percents**

School: Northern Elementary School
District: Fayette County
Code: 165077
Grade: 04

0% 10% 20% 30% 40% 50% 60% 70% 80% 90% 100%

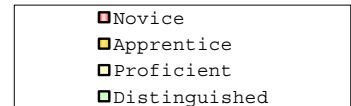


Tested Students

| | N% | A% | P% | D% | P+D% |
|-----------------------|---------------|----|----|----|-------|
| Total | 8 | 15 | 60 | 18 | 77.42 |
| Female | 3 | 19 | 58 | 19 | 77.42 |
| Male | 13 | 10 | 61 | 16 | 77.42 |
| White (Non-Hispanic) | 16 | 5 | 63 | 16 | 78.95 |
| African-American | 3 | 18 | 59 | 21 | 79.41 |
| Hispanic | Unreportable* | | | | |
| Asian | Unreportable* | | | | |
| Other | Unreportable* | | | | |
| Title I | 8 | 15 | 60 | 18 | 77.42 |
| Migrant | Unreportable* | | | | |
| Identified LEP | Unreportable* | | | | |
| Extended Sch Services | Unreportable* | | | | |
| Gifted/Talented | Unreportable* | | | | |
| F/R Lunch Approved | 10 | 16 | 59 | 16 | 74.51 |
| Vocational/2 Credits | Unreportable* | | | | |
| Disability | Unreportable* | | | | |
| Alternate Assessment | Unreportable* | | | | |

NCLB Accountable Students

| | N% | A% | P% | D% | P+D% |
|-----------------------|---------------|----|----|----|-------|
| Total | 8 | 15 | 61 | 16 | 77.05 |
| Female | 3 | 19 | 61 | 16 | 77.42 |
| Male | 13 | 10 | 60 | 17 | 76.67 |
| White (Non-Hispanic) | 18 | 6 | 65 | 12 | 76.47 |
| African-American | 3 | 18 | 59 | 21 | 79.41 |
| Hispanic | Unreportable* | | | | |
| Asian | Unreportable* | | | | |
| Other | Unreportable* | | | | |
| Title I | 8 | 15 | 61 | 16 | 77.05 |
| Migrant | Unreportable* | | | | |
| Identified LEP | Unreportable* | | | | |
| Extended Sch Services | Unreportable* | | | | |
| Gifted/Talented | Unreportable* | | | | |
| F/R Lunch Approved | 10 | 16 | 61 | 14 | 74.51 |
| Vocational/2 Credits | Unreportable* | | | | |
| Disability | Unreportable* | | | | |
| Alternate Assessment | Unreportable* | | | | |



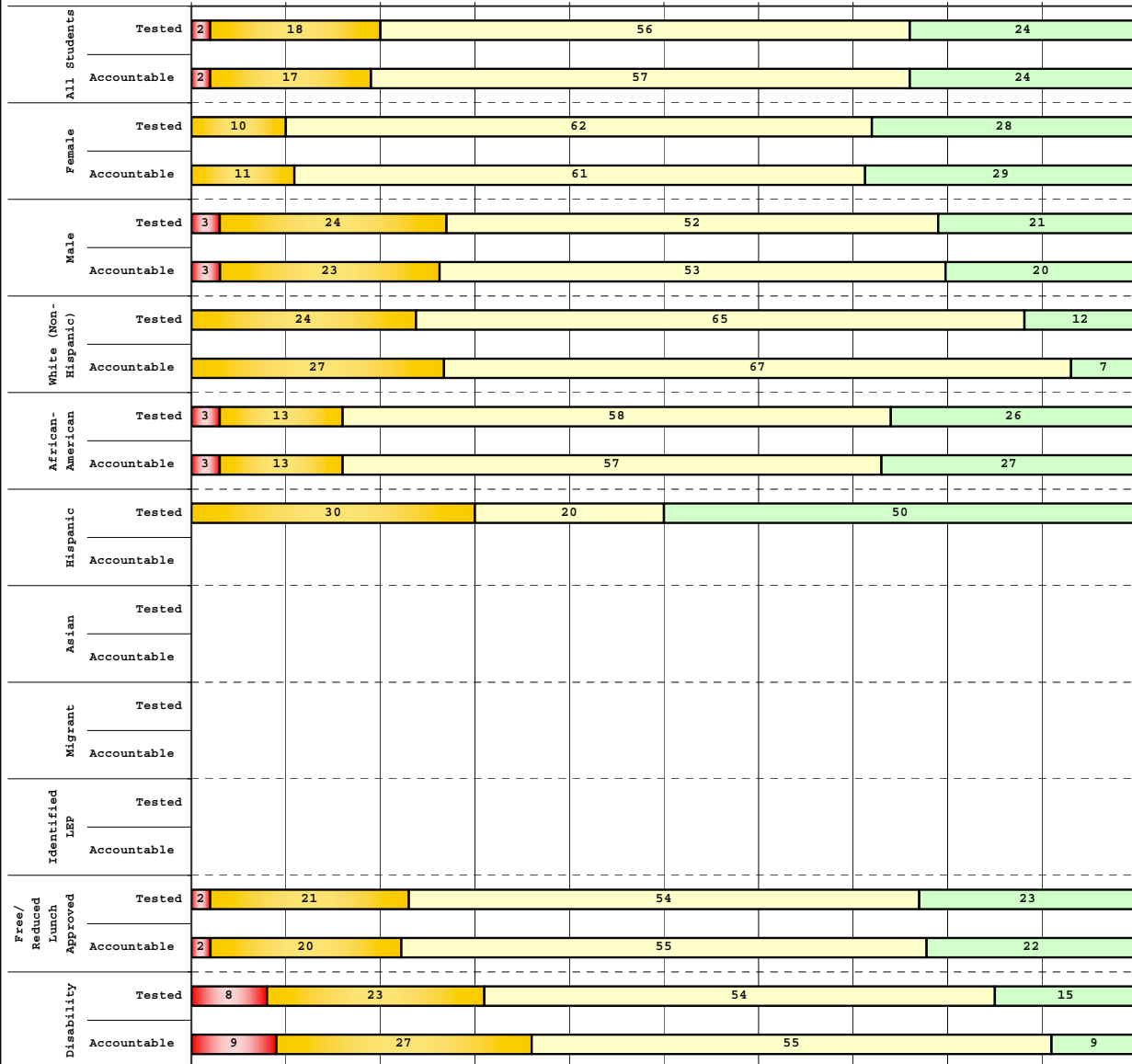
Percentage may not sum to 100% due to rounding. 'Unreportable*' indicates subpopulations with fewer than 10 students or subpopulations where all students score at the same performance level.



**2008-2009
INTERIM PERFORMANCE REPORT
READING DISAGGREGATION
Performance Level Percents**

School: Northern Elementary School
District: Fayette County
Code: 165077
Grade: 05

0% 10% 20% 30% 40% 50% 60% 70% 80% 90% 100%



Tested Students

| | N% | A% | P% | D% | P+D% |
|----------------------------------|----|----|----|----|---------------|
| Total | 2 | 18 | 56 | 24 | 80.65 |
| Female | 0 | 10 | 62 | 28 | 89.66 |
| Male | 3 | 24 | 52 | 21 | 72.73 |
| White (Non-Hispanic) | 0 | 24 | 65 | 12 | 76.47 |
| African-American | 3 | 13 | 58 | 26 | 83.87 |
| Hispanic | 0 | 30 | 20 | 50 | 70.00 |
| Asian | | | | | |
| Other | | | | | Unreportable* |
| Title I | 2 | 18 | 56 | 24 | 80.65 |
| Migrant | | | | | |
| Identified LEP | | | | | Unreportable* |
| Extended Sch Services | | | | | |
| Gifted/Talented | | | | | Unreportable* |
| F/R Lunch Approved | 2 | 21 | 54 | 23 | 76.92 |
| Vocational/2 Credits | | | | | |
| Disability | 8 | 23 | 54 | 15 | 69.23 |
| Alternate Assessment | | | | | Unreportable* |
| NCLB Accountable Students | | | | | |
| Total | 2 | 17 | 57 | 24 | 81.03 |
| Female | 0 | 11 | 61 | 29 | 89.29 |
| Male | 3 | 23 | 53 | 20 | 73.33 |
| White (Non-Hispanic) | 0 | 27 | 67 | 7 | 73.33 |
| African-American | 3 | 13 | 57 | 27 | 83.33 |
| Hispanic | | | | | Unreportable* |
| Asian | | | | | |
| Other | | | | | Unreportable* |
| Title I | 2 | 17 | 57 | 24 | 81.03 |
| Migrant | | | | | |
| Identified LEP | | | | | Unreportable* |
| Extended Sch Services | | | | | |
| Gifted/Talented | | | | | Unreportable* |
| F/R Lunch Approved | 2 | 20 | 55 | 22 | 77.55 |
| Vocational/2 Credits | | | | | |
| Disability | 9 | 27 | 55 | 9 | 63.64 |
| Alternate Assessment | | | | | Unreportable* |

| |
|-----------------|
| ■ Novice |
| ■ Apprentice |
| ■ Proficient |
| ■ Distinguished |

Percentage may not sum to 100% due to rounding. 'Unreportable*' indicates subpopulations with fewer than 10 students or subpopulations where all students score at the same performance level.



**2008-2009
INTERIM PERFORMANCE REPORT
READING CORE CONTENT**

School: Northern Elementary School
 District: Fayette County
 Code: 165077
 Grade: 03

| | No. Items | No. Observations | SCHOOL | | | | | | | Mean | Std. Err. | No. Observations | STATE | | | | | | | Mean | School -State Mean |
|----------------------------------|--------------|---------------------|--------|----|----|----|----|---|------|------|--------------|---------------------|-------|----|----|----|---|------|------|------|--------------------------|
| | | | B | 0 | 1 | 2 | 3 | 4 | B | | | | 0 | 1 | 2 | 3 | 4 | | | | |
| OPEN RESPONSE | | | | | | | | | | | | | | | | | | | | | |
| 2.0.x - Developing Understanding | 2 | 122 | 0 | 5 | 20 | 38 | 30 | 8 | 2.2 | 0.1 | 100,212 | 0 | 10 | 30 | 44 | 14 | 2 | 1.7 | 0.5 | | |
| 3.0.x - Interpreting Text | 2 | 122 | 0 | 5 | 20 | 38 | 30 | 8 | 2.2 | 0.1 | 100,212 | 0 | 10 | 30 | 44 | 14 | 2 | 1.7 | 0.5 | | |
| MULTIPLE CHOICE | | | | | | | | | | | | | | | | | | | | | |
| 1.0.x - Forming a Foundation | 32 | 473 | 87 | 13 | 0 | | | | 0.87 | 0.02 | 392,589 | 83 | 17 | 0 | | | | 0.83 | 0.04 | | |
| 2.0.x - Developing Understanding | 89 | 1,209 | 83 | 17 | 0 | | | | 0.83 | 0.01 | 993,477 | 80 | 20 | 0 | | | | 0.80 | 0.03 | | |
| 3.0.x - Interpreting Text | 31 | 580 | 82 | 18 | 0 | | | | 0.82 | 0.02 | 468,115 | 77 | 23 | 0 | | | | 0.77 | 0.05 | | |
| 5.0.x - Critical Stance | 15 | 244 | 83 | 17 | 0 | | | | 0.83 | 0.03 | 208,359 | 79 | 21 | 0 | | | | 0.79 | 0.04 | | |



2008-2009
INTERIM PERFORMANCE REPORT
READING CORE CONTENT

School: Northern Elementary School
 District: Fayette County
 Code: 165077
 Grade: 04

| | No. Items | No. Observations | SCHOOL | | | | | | | Mean | Std. Err. | No. Observations | STATE | | | | | | | Mean | School -State Mean |
|----------------------------------|--------------|---------------------|--------|----|----|----|----|----|------|------|--------------|---------------------|-------|----|----|----|---|------|-------|------|--------------------------|
| | | | B | 0 | 1 | 2 | 3 | 4 | B | | | | 0 | 1 | 2 | 3 | 4 | | | | |
| OPEN RESPONSE | | | | | | | | | | | | | | | | | | | | | |
| 2.0.x - Developing Understanding | 5 | 100 | 0 | 2 | 13 | 43 | 34 | 8 | 2.3 | 0.1 | 81,849 | 0 | 3 | 24 | 52 | 18 | 3 | 1.9 | 0.4 | | |
| 3.0.x - Interpreting Text | 6 | 164 | 0 | 2 | 16 | 36 | 35 | 10 | 2.4 | 0.1 | 131,199 | 0 | 4 | 22 | 45 | 23 | 5 | 2.0 | 0.4 | | |
| MULTIPLE CHOICE | | | | | | | | | | | | | | | | | | | | | |
| 1.0.x - Forming a Foundation | 34 | 508 | 64 | 36 | 0 | | | | 0.64 | 0.02 | 401,452 | 72 | 28 | 0 | | | | 0.71 | -0.07 | | |
| 2.0.x - Developing Understanding | 76 | 1,080 | 69 | 30 | 0 | | | | 0.69 | 0.01 | 868,422 | 73 | 27 | 0 | | | | 0.73 | -0.04 | | |
| 3.0.x - Interpreting Text | 29 | 331 | 75 | 25 | 0 | | | | 0.75 | 0.02 | 278,648 | 79 | 21 | 0 | | | | 0.79 | -0.04 | | |
| 5.0.x - Critical Stance | 9 | 188 | 75 | 25 | 0 | | | | 0.75 | 0.03 | 155,704 | 74 | 26 | 0 | | | | 0.74 | 0.01 | | |



2008-2009
INTERIM PERFORMANCE REPORT
READING CORE CONTENT

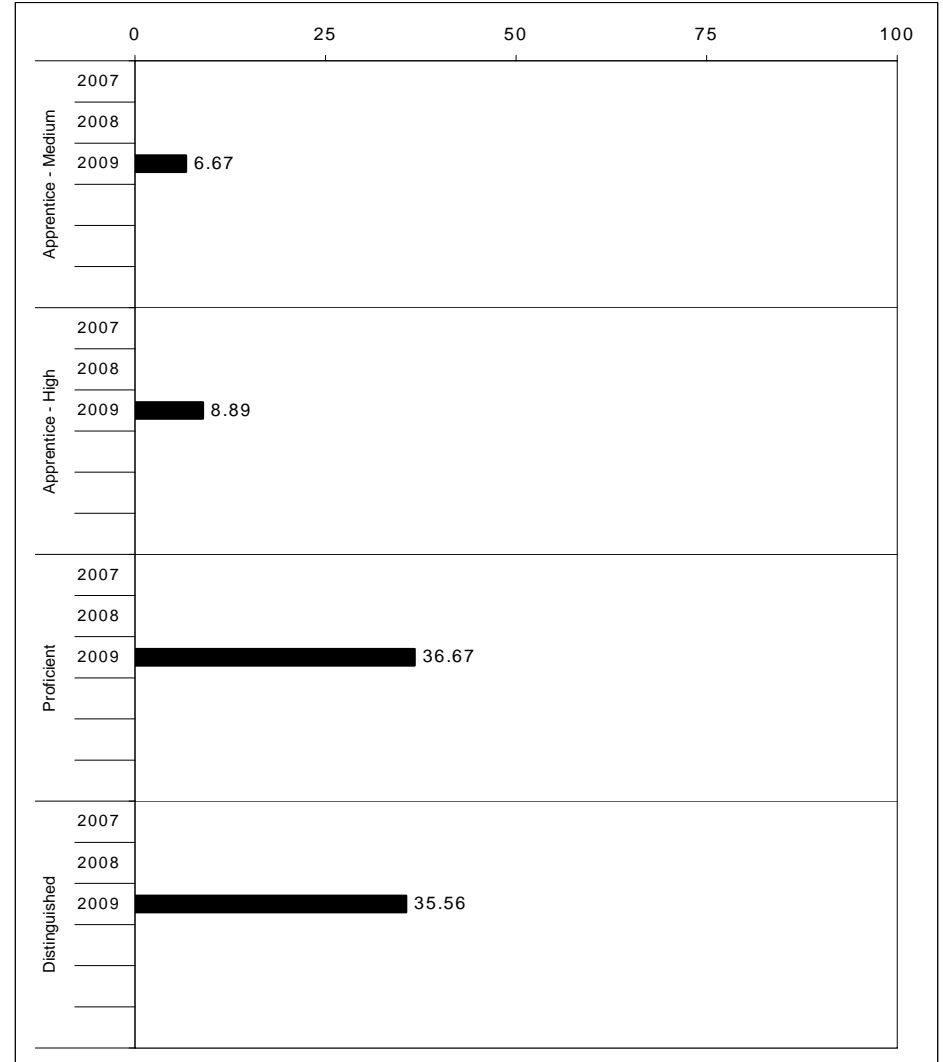
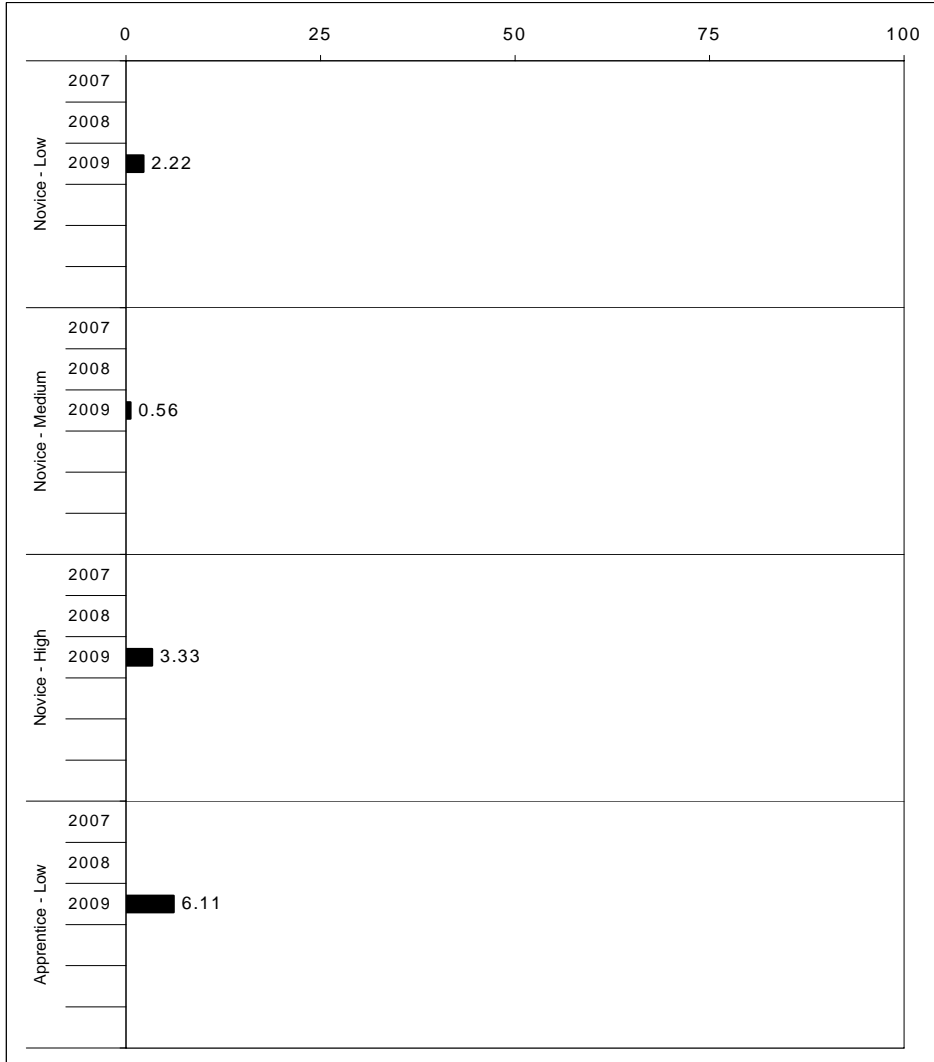
School: Northern Elementary School
 District: Fayette County
 Code: 165077
 Grade: 05

| | No. Items | No. Observations | SCHOOL | | | | | | | | Mean | Std. Err. | No. Observations | STATE | | | | | | | | Mean | School -State Mean |
|----------------------------------|--------------|---------------------|--------|----|----|----|----|---|------|------|---------|--------------|---------------------|-------|----|----|---|------|-------|--|--|------|--------------------------|
| | | | B | 0 | 1 | 2 | 3 | 4 | B | 0 | | | | 1 | 2 | 3 | 4 | | | | | | |
| OPEN RESPONSE | | | | | | | | | | | | | | | | | | | | | | | |
| 2.0.x - Developing Understanding | 6 | 103 | 1 | 3 | 9 | 35 | 44 | 9 | 2.4 | 0.1 | 89,507 | 0 | 5 | 23 | 48 | 20 | 5 | 2.0 | 0.4 | | | | |
| 3.0.x - Interpreting Text | 6 | 153 | 1 | 2 | 10 | 43 | 35 | 8 | 2.4 | 0.1 | 130,403 | 0 | 5 | 21 | 50 | 19 | 4 | 2.0 | 0.4 | | | | |
| MULTIPLE CHOICE | | | | | | | | | | | | | | | | | | | | | | | |
| 1.0.x - Forming a Foundation | 28 | 315 | 67 | 32 | 1 | | | | 0.67 | 0.02 | 268,187 | 74 | 26 | 0 | | | | 0.74 | -0.07 | | | | |
| 2.0.x - Developing Understanding | 71 | 967 | 79 | 21 | 0 | | | | 0.78 | 0.01 | 823,068 | 80 | 20 | 0 | | | | 0.80 | -0.02 | | | | |
| 3.0.x - Interpreting Text | 27 | 394 | 83 | 17 | 0 | | | | 0.83 | 0.02 | 341,653 | 81 | 19 | 0 | | | | 0.81 | 0.02 | | | | |
| 5.0.x - Critical Stance | 17 | 349 | 83 | 16 | 0 | | | | 0.83 | 0.02 | 300,671 | 75 | 25 | 0 | | | | 0.75 | 0.08 | | | | |



2008-2009
INTERIM PERFORMANCE REPORT
MATHEMATICS TREND DATA
Performance Level Percents

School: Northern Elementary School
 District: Fayette County
 Code: 165077
 Grade: ELEMENTARY



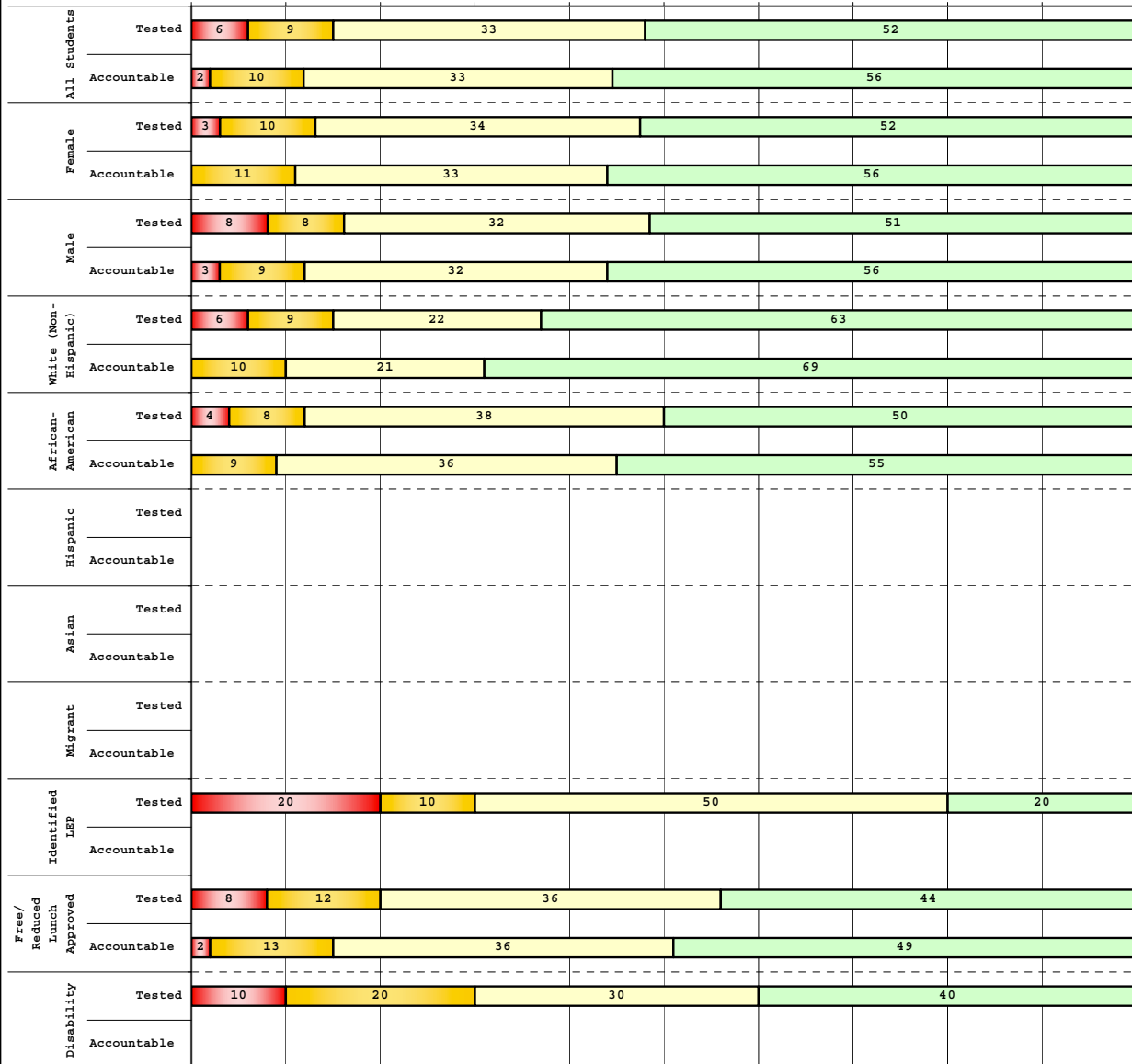
The horizontal bar represents the percent of students scoring at a performance level within a particular year. Percentages may not sum to 100% due to rounding.



**2008-2009
INTERIM PERFORMANCE REPORT
MATHEMATICS DISAGGREGATION
Performance Level Percents**

School: Northern Elementary School
District: Fayette County
Code: 165077
Grade: 03

0% 10% 20% 30% 40% 50% 60% 70% 80% 90% 100%



| | N% | A% | P% | D% | P+D% |
|----------------------------------|---------------|----|----|----|-------|
| Tested Students | | | | | |
| Total | 6 | 9 | 33 | 52 | 84.85 |
| Female | 3 | 10 | 34 | 52 | 86.21 |
| Male | 8 | 8 | 32 | 51 | 83.78 |
| White (Non-Hispanic) | 6 | 9 | 22 | 63 | 84.38 |
| African-American | 4 | 8 | 38 | 50 | 87.50 |
| Hispanic | Unreportable* | | | | |
| Asian | Unreportable* | | | | |
| Other | Unreportable* | | | | |
| Title I | 6 | 9 | 33 | 52 | 84.85 |
| Migrant | Unreportable* | | | | |
| Identified LEP | 20 | 10 | 50 | 20 | 70.00 |
| Extended Sch Services | Unreportable* | | | | |
| Gifted/Talented | Unreportable* | | | | |
| F/R Lunch Approved | 8 | 12 | 36 | 44 | 80.00 |
| Vocational/2 Credits | Unreportable* | | | | |
| Disability | 10 | 20 | 30 | 40 | 70.00 |
| Alternate Assessment | Unreportable* | | | | |
| NCLB Accountable Students | | | | | |
| Total | 2 | 10 | 33 | 56 | 88.52 |
| Female | 0 | 11 | 33 | 56 | 88.89 |
| Male | 3 | 9 | 32 | 56 | 88.24 |
| White (Non-Hispanic) | 0 | 10 | 21 | 69 | 89.66 |
| African-American | 0 | 9 | 36 | 55 | 90.91 |
| Hispanic | Unreportable* | | | | |
| Asian | Unreportable* | | | | |
| Other | Unreportable* | | | | |
| Title I | 2 | 10 | 33 | 56 | 88.52 |
| Migrant | Unreportable* | | | | |
| Identified LEP | Unreportable* | | | | |
| Extended Sch Services | Unreportable* | | | | |
| Gifted/Talented | Unreportable* | | | | |
| F/R Lunch Approved | 2 | 13 | 36 | 49 | 84.44 |
| Vocational/2 Credits | Unreportable* | | | | |
| Disability | Unreportable* | | | | |
| Alternate Assessment | Unreportable* | | | | |

| |
|-----------------|
| ■ Novice |
| ■ Apprentice |
| ■ Proficient |
| ■ Distinguished |

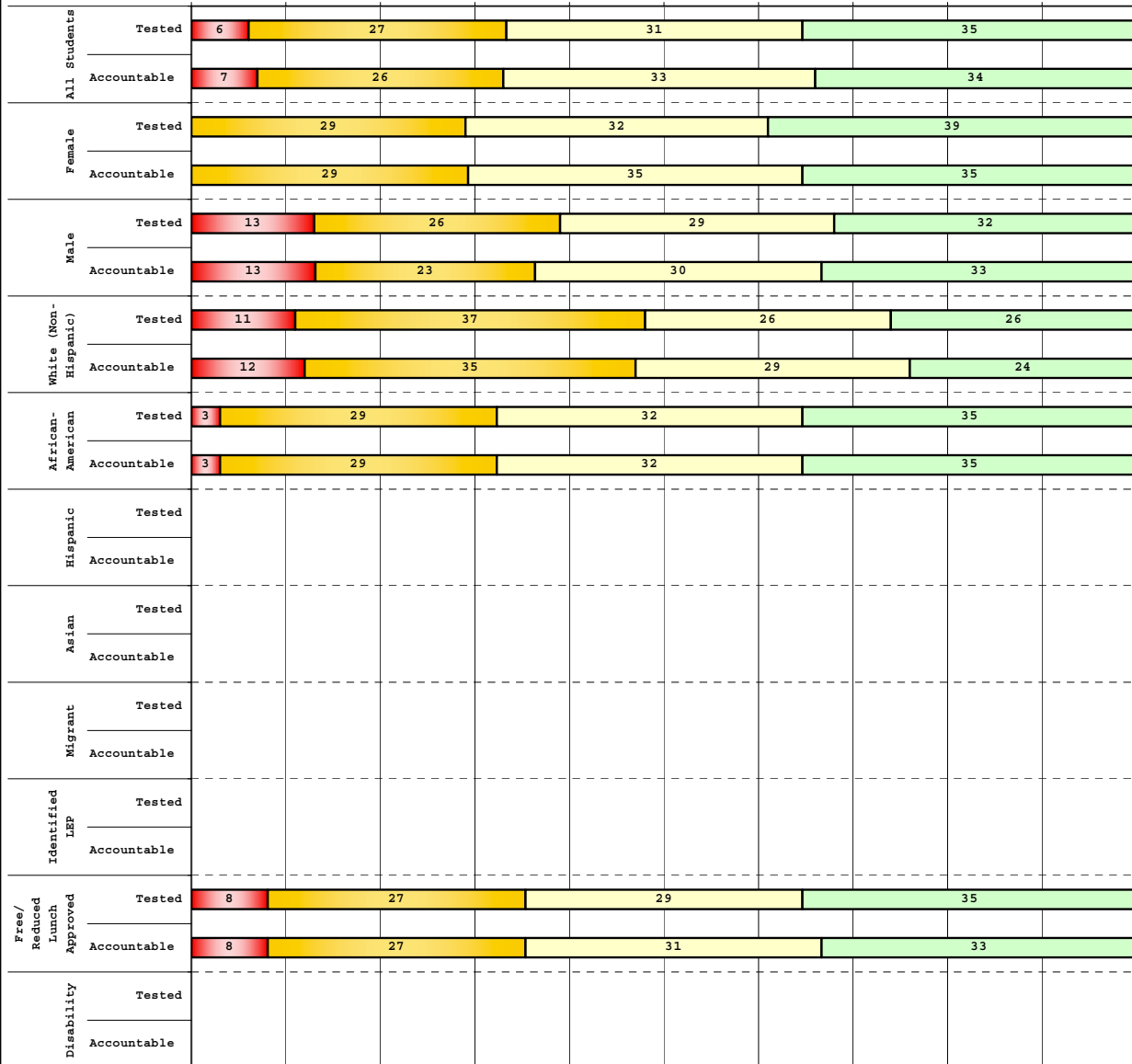
Percentage may not sum to 100% due to rounding. 'Unreportable*' indicates subpopulations with fewer than 10 students or subpopulations where all students score at the same performance level.



2008-2009
INTERIM PERFORMANCE REPORT
MATHEMATICS DISAGGREGATION
Performance Level Percents

School: Northern Elementary School
 District: Fayette County
 Code: 165077
 Grade: 04

0% 10% 20% 30% 40% 50% 60% 70% 80% 90% 100%

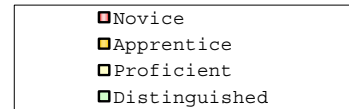


Tested Students

| | N% | A% | P% | D% | P+D% |
|-----------------------|---------------|----|----|----|-------|
| Total | 6 | 27 | 31 | 35 | 66.13 |
| Female | 0 | 29 | 32 | 39 | 70.97 |
| Male | 13 | 26 | 29 | 32 | 61.29 |
| White (Non-Hispanic) | 11 | 37 | 26 | 26 | 52.63 |
| African-American | 3 | 29 | 32 | 35 | 67.65 |
| Hispanic | Unreportable* | | | | |
| Asian | Unreportable* | | | | |
| Other | Unreportable* | | | | |
| Title I | 6 | 27 | 31 | 35 | 66.13 |
| Migrant | Unreportable* | | | | |
| Identified LEP | Unreportable* | | | | |
| Extended Sch Services | Unreportable* | | | | |
| Gifted/Talented | Unreportable* | | | | |
| F/R Lunch Approved | 8 | 27 | 29 | 35 | 64.71 |
| Vocational/2 Credits | Unreportable* | | | | |
| Disability | Unreportable* | | | | |
| Alternate Assessment | Unreportable* | | | | |

NCLB Accountable Students

| | N% | A% | P% | D% | P+D% |
|-----------------------|---------------|----|----|----|-------|
| Total | 7 | 26 | 33 | 34 | 67.21 |
| Female | 0 | 29 | 35 | 35 | 70.97 |
| Male | 13 | 23 | 30 | 33 | 63.33 |
| White (Non-Hispanic) | 12 | 35 | 29 | 24 | 52.94 |
| African-American | 3 | 29 | 32 | 35 | 67.65 |
| Hispanic | Unreportable* | | | | |
| Asian | Unreportable* | | | | |
| Other | Unreportable* | | | | |
| Title I | 7 | 26 | 33 | 34 | 67.21 |
| Migrant | Unreportable* | | | | |
| Identified LEP | Unreportable* | | | | |
| Extended Sch Services | Unreportable* | | | | |
| Gifted/Talented | Unreportable* | | | | |
| F/R Lunch Approved | 8 | 27 | 31 | 33 | 64.71 |
| Vocational/2 Credits | Unreportable* | | | | |
| Disability | Unreportable* | | | | |
| Alternate Assessment | Unreportable* | | | | |



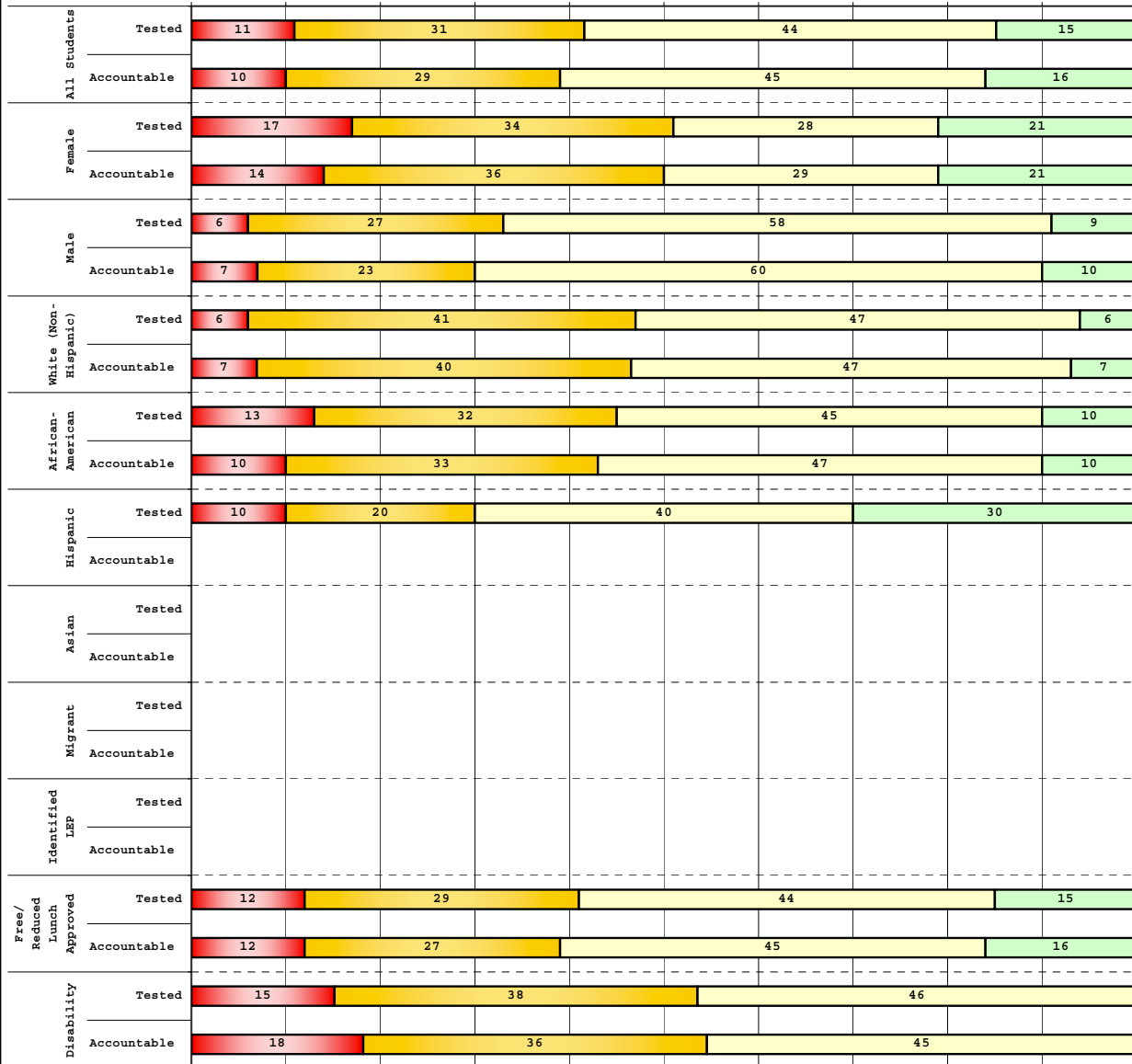
Percentage may not sum to 100% due to rounding. 'Unreportable*' indicates subpopulations with fewer than 10 students or subpopulations where all students score at the same performance level.



**2008-2009
INTERIM PERFORMANCE REPORT
MATHEMATICS DISAGGREGATION
Performance Level Percents**

School: Northern Elementary School
District: Fayette County
Code: 165077
Grade: 05

0% 10% 20% 30% 40% 50% 60% 70% 80% 90% 100%

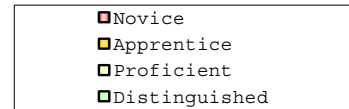


Tested Students

| | N% | A% | P% | D% | P+D% |
|-----------------------|----|----|----|----|---------------|
| Total | 11 | 31 | 44 | 15 | 58.06 |
| Female | 17 | 34 | 28 | 21 | 48.28 |
| Male | 6 | 27 | 58 | 9 | 66.67 |
| White (Non-Hispanic) | 6 | 41 | 47 | 6 | 52.94 |
| African-American | 13 | 32 | 45 | 10 | 54.84 |
| Hispanic | 10 | 20 | 40 | 30 | 70.00 |
| Asian | | | | | |
| Other | | | | | Unreportable* |
| Title I | 11 | 31 | 44 | 15 | 58.06 |
| Migrant | | | | | |
| Identified LEP | | | | | Unreportable* |
| Extended Sch Services | | | | | |
| Gifted/Talented | | | | | Unreportable* |
| F/R Lunch Approved | 12 | 29 | 44 | 15 | 59.62 |
| Vocational/2 Credits | | | | | |
| Disability | 15 | 38 | 46 | 0 | 46.15 |
| Alternate Assessment | | | | | Unreportable* |

NCLB Accountable Students

| | N% | A% | P% | D% | P+D% |
|-----------------------|----|----|----|----|---------------|
| Total | 10 | 29 | 45 | 16 | 60.34 |
| Female | 14 | 36 | 29 | 21 | 50.00 |
| Male | 7 | 23 | 60 | 10 | 70.00 |
| White (Non-Hispanic) | 7 | 40 | 47 | 7 | 53.33 |
| African-American | 10 | 33 | 47 | 10 | 56.67 |
| Hispanic | | | | | Unreportable* |
| Asian | | | | | |
| Other | | | | | Unreportable* |
| Title I | 10 | 29 | 45 | 16 | 60.34 |
| Migrant | | | | | |
| Identified LEP | | | | | Unreportable* |
| Extended Sch Services | | | | | |
| Gifted/Talented | | | | | Unreportable* |
| F/R Lunch Approved | 12 | 27 | 45 | 16 | 61.22 |
| Vocational/2 Credits | | | | | |
| Disability | 18 | 36 | 45 | 0 | 45.45 |
| Alternate Assessment | | | | | Unreportable* |



Percentage may not sum to 100% due to rounding. 'Unreportable*' indicates subpopulations with fewer than 10 students or subpopulations where all students score at the same performance level.



2008-2009
INTERIM PERFORMANCE REPORT
MATHEMATICS CORE CONTENT

School: Northern Elementary School
 District: Fayette County
 Code: 165077
 Grade: 03

| | No. Items | No. Observations | SCHOOL | | | | | | | | STATE | | | | | | | | School -State Mean |
|------------------------------------|--------------|---------------------|----------|----|----|----|----|----|------|--------------|----------|----|---------------------|----|----|----|------|------|--------------------------|
| | | | Percents | | | | | | Mean | Std. Err. | Percents | | | | | | Mean | | |
| | | | B | 0 | 1 | 2 | 3 | 4 | | | | | No. Observations | B | 0 | 1 | | 2 | 3 |
| OPEN RESPONSE | | | | | | | | | | | | | | | | | | | |
| 1.x.x - Number Prop Oper | 5 | 151 | 1 | 11 | 28 | 38 | 12 | 10 | 1.8 | 0.1 | 125,243 | 0 | 21 | 35 | 26 | 10 | 8 | 1.5 | 0.3 |
| 2.x.x - Measurement | 1 | 10 | 0 | 10 | 10 | 60 | 10 | 10 | 2.0 | 0.5 | 8,325 | 0 | 25 | 5 | 30 | 14 | 25 | 2.1 | -0.1 |
| 3.x.x - Geometry | 2 | 20 | 0 | 0 | 15 | 30 | 5 | 50 | 2.9 | 0.3 | 16,777 | 0 | 8 | 24 | 35 | 13 | 20 | 2.1 | 0.8 |
| 4.x.x - Data Analysis & Probabilit | 1 | 61 | 0 | 5 | 0 | 13 | 26 | 56 | 3.3 | 0.2 | 50,106 | 0 | 9 | 13 | 19 | 27 | 32 | 2.6 | 0.7 |
| 5.x.x - Algebraic Thinking | 2 | 73 | 0 | 4 | 4 | 12 | 27 | 52 | 3.2 | 0.2 | 58,404 | 0 | 9 | 14 | 19 | 28 | 31 | 2.6 | 0.6 |
| MULTIPLE CHOICE | | | | | | | | | | | | | | | | | | | |
| 1.x.x - Number Prop Oper | 32 | 986 | 81 | 19 | 0 | | | | 0.81 | 0.01 | 810,106 | 74 | 26 | 0 | | | | 0.74 | 0.07 |
| 2.x.x - Measurement | 7 | 224 | 89 | 11 | 0 | | | | 0.89 | 0.03 | 183,647 | 81 | 18 | 0 | | | | 0.81 | 0.08 |
| 3.x.x - Geometry | 18 | 488 | 92 | 8 | 0 | | | | 0.92 | 0.02 | 400,848 | 85 | 15 | 0 | | | | 0.85 | 0.07 |
| 4.x.x - Data Analysis & Probabilit | 8 | 232 | 76 | 24 | 0 | | | | 0.76 | 0.03 | 192,126 | 69 | 31 | 0 | | | | 0.69 | 0.07 |
| 5.x.x - Algebraic Thinking | 11 | 266 | 82 | 18 | 0 | | | | 0.82 | 0.03 | 217,089 | 78 | 22 | 0 | | | | 0.78 | 0.04 |



2008-2009
INTERIM PERFORMANCE REPORT
MATHEMATICS CORE CONTENT

School: Northern Elementary School
 District: Fayette County
 Code: 165077
 Grade: 04

| | No. Items | No. Observations | SCHOOL | | | | | | | | Std. Err. | No. Observations | STATE | | | | | | | | School -State Mean |
|------------------------------------|--------------|---------------------|---------|-----------|-----------|----|----|----|------|------|--------------|---------------------|-----------|-----------|----|----|----|------|-------|--|--------------------------|
| | | | B | 0 | 1 | 2 | 3 | 4 | Mean | B | | | 0 | 1 | 2 | 3 | 4 | Mean | | | |
| OPEN RESPONSE | | | | | | | | | | | | | | | | | | | | | |
| 1.x.x - Number Prop Oper | 4 | 93 | 0 | 14 | 24 | 31 | 13 | 18 | 2.0 | 0.1 | 73,656 | 0 | 17 | 24 | 29 | 19 | 12 | 1.9 | 0.1 | | |
| 2.x.x - Measurement | 1 | 9 | | | | | | | *** | | 8,195 | 0 | 43 | 13 | 10 | 20 | 13 | 1.5 | | | |
| 3.x.x - Geometry | 2 | 72 | 0 | 8 | 19 | 17 | 15 | 40 | 2.6 | 0.2 | 57,352 | 0 | 11 | 20 | 17 | 19 | 33 | 2.4 | 0.2 | | |
| 4.x.x - Data Analysis & Probabilit | 1 | 8 | | | | | | | *** | | 8,152 | 0 | 5 | 36 | 29 | 23 | 6 | 1.9 | | | |
| 5.x.x - Algebraic Thinking | 2 | 71 | 0 | 8 | 25 | 34 | 25 | 7 | 2.0 | 0.1 | 57,508 | 0 | 5 | 27 | 32 | 25 | 11 | 2.1 | -0.1 | | |
| MULTIPLE CHOICE | | | | | | | | | | | | | | | | | | | | | |
| 1.x.x - Number Prop Oper | 31 | 823 | Correct | Incorrect | Omit/Mult | | | | 0.64 | 0.02 | 664,194 | Correct | Incorrect | Omit/Mult | | | | 0.67 | -0.03 | | |
| 2.x.x - Measurement | 7 | 171 | 64 | 35 | 1 | | | | 0.63 | 0.04 | 139,170 | 67 | 33 | 0 | | | | 0.62 | 0.01 | | |
| 3.x.x - Geometry | 14 | 348 | 63 | 37 | 0 | | | | 0.73 | 0.02 | 278,460 | 62 | 38 | 0 | | | | 0.77 | -0.04 | | |
| 4.x.x - Data Analysis & Probabilit | 12 | 373 | 73 | 26 | 1 | | | | 0.68 | 0.02 | 303,394 | 77 | 23 | 0 | | | | 0.71 | -0.03 | | |
| 5.x.x - Algebraic Thinking | 11 | 317 | 68 | 32 | 0 | | | | 0.66 | 0.03 | 253,829 | 71 | 29 | 0 | | | | 0.69 | -0.03 | | |
| | | | 66 | 34 | 0 | | | | | | | 69 | 31 | 0 | | | | | | | |



2008-2009
INTERIM PERFORMANCE REPORT
MATHEMATICS CORE CONTENT

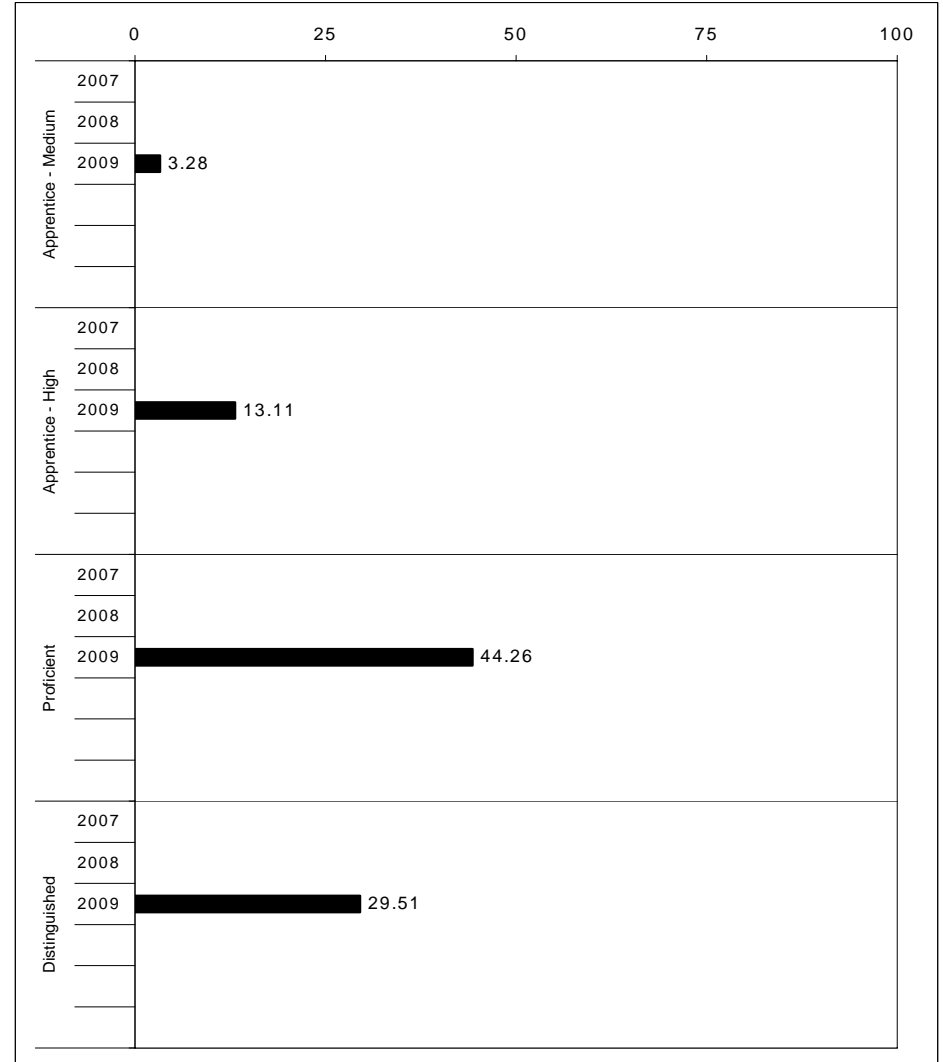
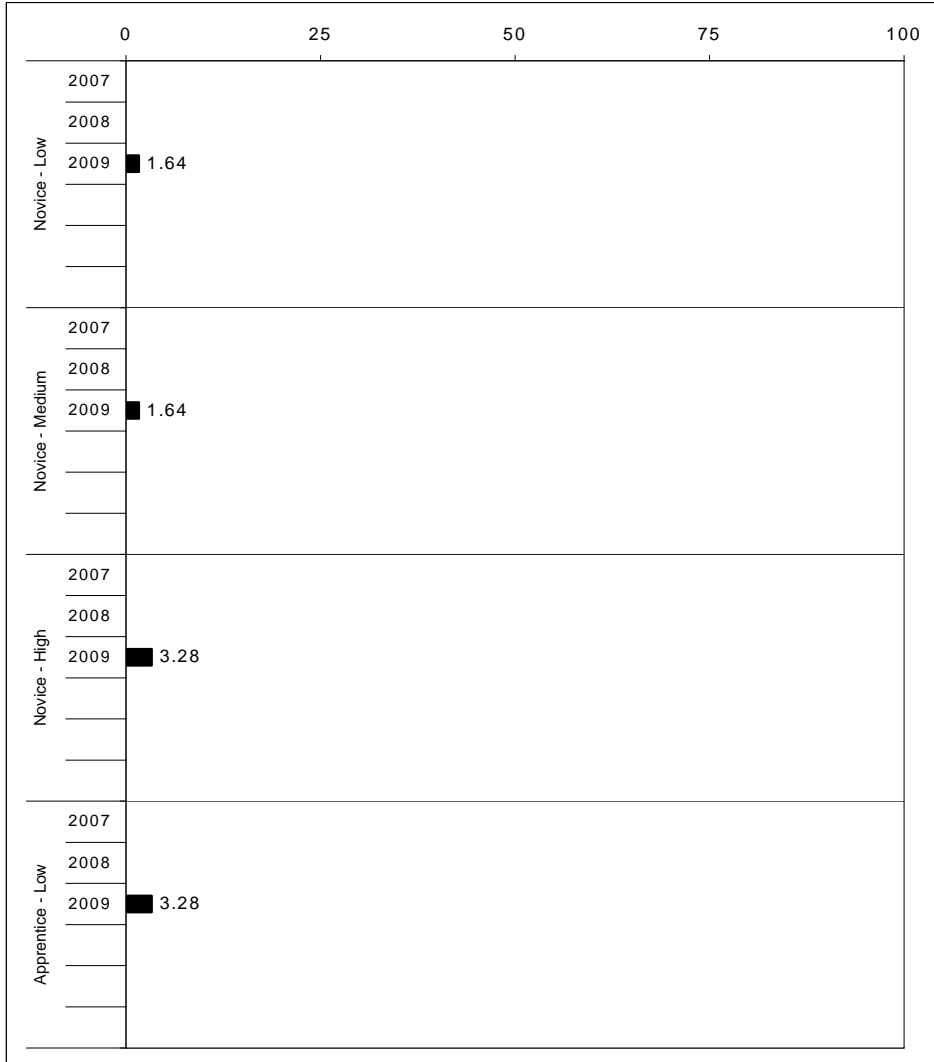
School: Northern Elementary School
 District: Fayette County
 Code: 165077
 Grade: 05

| | No. Items | No. Observations | SCHOOL | | | | | | | | Std. Err. | No. Observations | STATE | | | | | | | | School -State Mean |
|------------------------------------|--------------|---------------------|----------------|------------------|------------------|----|----|----|------|------|--------------|---------------------|------------------|------------------|----|----|----|------|-------|--|--------------------------|
| | | | B | 0 | 1 | 2 | 3 | 4 | Mean | B | | | 0 | 1 | 2 | 3 | 4 | Mean | | | |
| OPEN RESPONSE | | | | | | | | | | | | | | | | | | | | | |
| 1.x.x - Number Prop Oper | 4 | 86 | 0 | 10 | 22 | 28 | 9 | 30 | 2.3 | 0.1 | 73,199 | 0 | 8 | 20 | 18 | 25 | 29 | 2.5 | -0.2 | | |
| 2.x.x - Measurement | 1 | 10 | 0 | 30 | 40 | 0 | 10 | 20 | 1.5 | 0.4 | 8,380 | 0 | 37 | 30 | 13 | 10 | 11 | 1.3 | 0.2 | | |
| 3.x.x - Geometry | 2 | 66 | 0 | 3 | 17 | 32 | 36 | 12 | 2.4 | 0.1 | 56,900 | 0 | 6 | 24 | 30 | 26 | 14 | 2.2 | 0.2 | | |
| 4.x.x - Data Analysis & Probabilit | 1 | 57 | 0 | 18 | 18 | 25 | 12 | 28 | 2.2 | 0.2 | 48,828 | 0 | 15 | 18 | 15 | 17 | 35 | 2.4 | -0.2 | | |
| 5.x.x - Algebraic Thinking | 1 | 9 | | | | | | | *** | | 8,005 | 0 | 13 | 15 | 20 | 17 | 35 | 2.5 | | | |
| MULTIPLE CHOICE | | | | | | | | | | | | | | | | | | | | | |
| | | | Correct | Incorrect | Omit/Mult | | | | | | | Correct | Incorrect | Omit/Mult | | | | | | | |
| 1.x.x - Number Prop Oper | 29 | 751 | 60 | 39 | 1 | | | | 0.60 | 0.02 | 643,144 | 63 | 37 | 0 | | | | 0.63 | -0.03 | | |
| 2.x.x - Measurement | 9 | 180 | 40 | 59 | 1 | | | | 0.40 | 0.04 | 154,489 | 62 | 38 | 0 | | | | 0.62 | -0.22 | | |
| 3.x.x - Geometry | 14 | 323 | 74 | 25 | 1 | | | | 0.74 | 0.02 | 276,516 | 78 | 22 | 0 | | | | 0.78 | -0.04 | | |
| 4.x.x - Data Analysis & Probabilit | 11 | 294 | 58 | 41 | 1 | | | | 0.58 | 0.03 | 252,212 | 64 | 36 | 0 | | | | 0.64 | -0.06 | | |
| 5.x.x - Algebraic Thinking | 10 | 285 | 62 | 37 | 1 | | | | 0.62 | 0.03 | 244,140 | 65 | 35 | 0 | | | | 0.65 | -0.03 | | |



2008-2009
INTERIM PERFORMANCE REPORT
SCIENCE TREND DATA
Performance Level Percents

School: Northern Elementary School
 District: Fayette County
 Code: 165077
 Grade: 04



The horizontal bar represents the percent of students scoring at a performance level within a particular year. Percentages may not sum to 100% due to rounding.



**2008-2009
INTERIM PERFORMANCE REPORT
SCIENCE DISAGGREGATION
Performance Level Percents**

School: Northern Elementary School
District: Fayette County
Code: 165077
Grade: 04

| | | 0% | 10% | 20% | 30% | 40% | 50% | 60% | 70% | 80% | 90% | 100% | N% | A% | P% | D% | P+D% | |
|-----------------------------|----------|----|-----|-----|-----|-----|-----|-----|-----|-----|-----|------|-------------------------|---------------|----|----|------|-------|
| All Students | Tested | 6 | 19 | 44 | 31 | | | | | | | | Tested Students | | | | | |
| | 100 Days | 7 | 20 | 44 | 30 | | | | | | | | Total | 6 | 19 | 44 | 31 | 74.19 |
| Female | Tested | 6 | 13 | 52 | 29 | | | | | | | | Female | 6 | 13 | 52 | 29 | 80.65 |
| | 100 Days | 6 | 13 | 55 | 26 | | | | | | | | Male | 6 | 26 | 35 | 32 | 67.74 |
| Male | Tested | 6 | 26 | 35 | 32 | | | | | | | | White (Non-Hispanic) | 11 | 21 | 32 | 37 | 68.42 |
| | 100 Days | 7 | 27 | 33 | 33 | | | | | | | | African-American | 3 | 21 | 50 | 26 | 76.47 |
| White (Non-Hispanic) | Tested | 11 | 21 | 32 | 37 | | | | | | | | Hispanic | Unreportable* | | | | |
| | 100 Days | 12 | 24 | 29 | 35 | | | | | | | | Asian | Unreportable* | | | | |
| African-American | Tested | 3 | 21 | 50 | 26 | | | | | | | | Other | Unreportable* | | | | |
| | 100 Days | 3 | 21 | 50 | 26 | | | | | | | | Title I | 6 | 19 | 44 | 31 | 74.19 |
| Hispanic | Tested | | | | | | | | | | | | Migrant | Unreportable* | | | | |
| | 100 Days | | | | | | | | | | | | Identified LEP | Unreportable* | | | | |
| Asian | Tested | | | | | | | | | | | | Extended Sch Services | Unreportable* | | | | |
| | 100 Days | | | | | | | | | | | | Gifted/Talented | Unreportable* | | | | |
| Migrant | Tested | | | | | | | | | | | | F/R Lunch Approved | 8 | 22 | 41 | 29 | 70.59 |
| | 100 Days | | | | | | | | | | | | Vocational/2 Credits | | | | | |
| Identified LEP | Tested | | | | | | | | | | | | Disability | Unreportable* | | | | |
| | 100 Days | | | | | | | | | | | | Alternate Assessment | | | | | |
| Free/Reduced Lunch Approved | Tested | 8 | 22 | 41 | 29 | | | | | | | | 100 Day Students | | | | | |
| | 100 Days | 8 | 22 | 43 | 27 | | | | | | | | Total | 7 | 20 | 44 | 30 | 73.77 |
| Disability | Tested | | | | | | | | | | | | Female | 6 | 13 | 55 | 26 | 80.65 |
| | 100 Days | | | | | | | | | | | | Male | 7 | 27 | 33 | 33 | 66.67 |
| | | | | | | | | | | | | | White (Non-Hispanic) | 12 | 24 | 29 | 35 | 64.71 |
| | | | | | | | | | | | | | African-American | 3 | 21 | 50 | 26 | 76.47 |
| | | | | | | | | | | | | | Hispanic | Unreportable* | | | | |
| | | | | | | | | | | | | | Asian | Unreportable* | | | | |
| | | | | | | | | | | | | | Other | Unreportable* | | | | |
| | | | | | | | | | | | | | Title I | 7 | 20 | 44 | 30 | 73.77 |
| | | | | | | | | | | | | | Migrant | Unreportable* | | | | |
| | | | | | | | | | | | | | Identified LEP | Unreportable* | | | | |
| | | | | | | | | | | | | | Extended Sch Services | Unreportable* | | | | |
| | | | | | | | | | | | | | Gifted/Talented | Unreportable* | | | | |
| | | | | | | | | | | | | | F/R Lunch Approved | 8 | 22 | 43 | 27 | 70.59 |
| | | | | | | | | | | | | | Vocational/2 Credits | | | | | |
| | | | | | | | | | | | | | Disability | Unreportable* | | | | |
| | | | | | | | | | | | | | Alternate Assessment | | | | | |

| | |
|---|---------------|
| ■ | Novice |
| ■ | Apprentice |
| ■ | Proficient |
| ■ | Distinguished |

Percentage may not sum to 100% due to rounding. 'Unreportable*' indicates subpopulations with fewer than 10 students or subpopulations where all students score at the same performance level.



2008-2009
INTERIM PERFORMANCE REPORT
SCIENCE CORE CONTENT

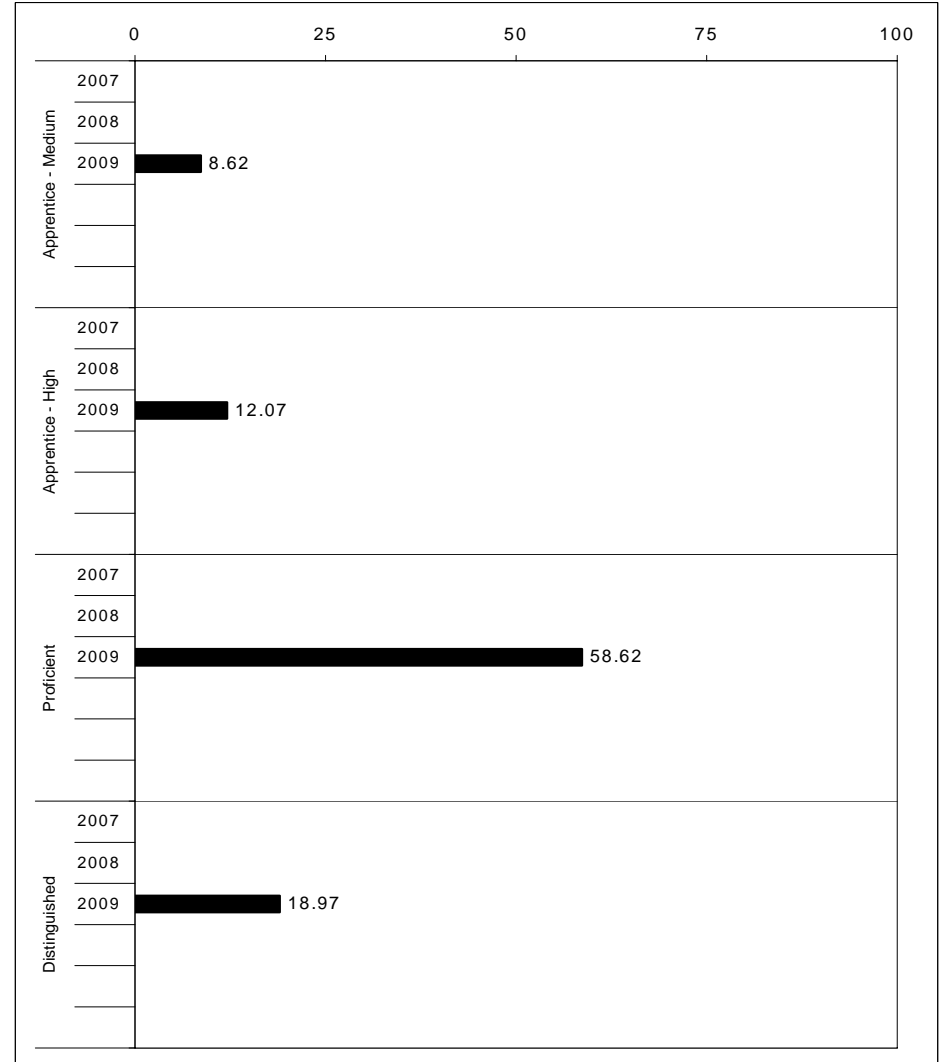
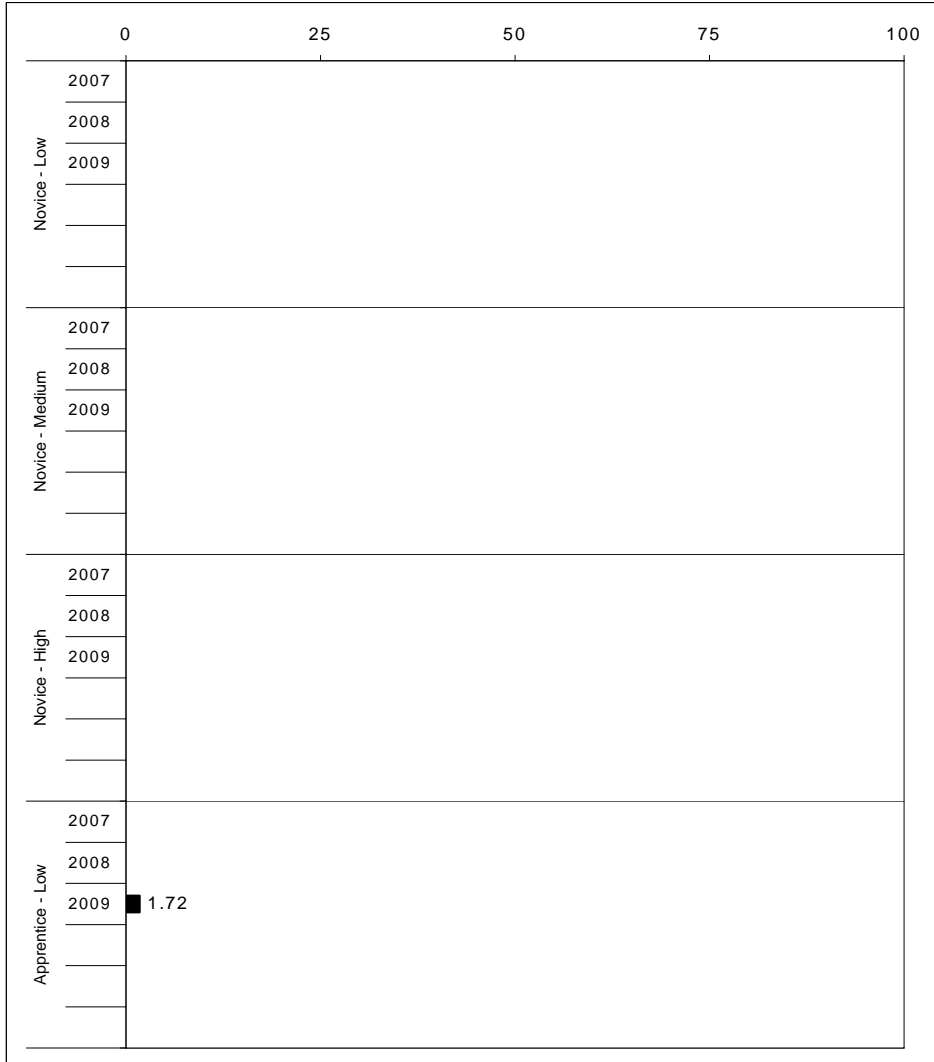
School: Northern Elementary School
 District: Fayette County
 Code: 165077
 Grade: 04

| | No. Items | No. Observations | SCHOOL | | | | | | | | Std. Err. | No. Observations | STATE | | | | | | | | School -State Mean |
|-----------------------------|--------------|---------------------|----------------|------------------|------------------|------|------|---------|------|-----|--------------|---------------------|------------------|------------------|----|----|----|------|------|--|--------------------------|
| | | | B | 0 | 1 | 2 | 3 | 4 | Mean | B | | | 0 | 1 | 2 | 3 | 4 | Mean | | | |
| OPEN RESPONSE | | | | | | | | | | | | | | | | | | | | | |
| 1.x.x - Physical Science | 2 | 19 | 0 | 11 | 26 | 37 | 21 | 5 | 1.8 | 0.2 | 16,337 | 0 | 17 | 19 | 42 | 17 | 5 | 1.7 | 0.1 | | |
| 2.x.x - Earth Space Science | 3 | 82 | 0 | 12 | 18 | 35 | 28 | 6 | 2.0 | 0.1 | 65,658 | 0 | 12 | 22 | 35 | 26 | 4 | 1.9 | 0.1 | | |
| 3.x.x - Biological Science | 3 | 82 | 0 | 1 | 10 | 38 | 46 | 5 | 2.4 | 0.1 | 65,506 | 0 | 2 | 11 | 33 | 44 | 9 | 2.5 | -0.1 | | |
| 4.x.x - Unifying Concepts | 2 | 71 | 0 | 3 | 8 | 21 | 44 | 24 | 2.8 | 0.1 | 57,508 | 0 | 3 | 13 | 33 | 35 | 15 | 2.5 | 0.3 | | |
| MULTIPLE CHOICE | | | | | | | | | | | | | | | | | | | | | |
| | | | Correct | Incorrect | Omit/Mult | | | | | | | Correct | Incorrect | Omit/Mult | | | | | | | |
| 1.x.x - Physical Science | 18 | 488 | 79 | 21 | 0 | 0.78 | 0.02 | 393,336 | 82 | 18 | 0 | 0.81 | -0.03 | | | | | | | | |
| 2.x.x - Earth Space Science | 19 | 496 | 70 | 30 | 1 | 0.70 | 0.02 | 401,488 | 71 | 29 | 0 | 0.71 | -0.01 | | | | | | | | |
| 3.x.x - Biological Science | 22 | 582 | 72 | 28 | 0 | 0.72 | 0.02 | 467,138 | 78 | 22 | 0 | 0.78 | -0.06 | | | | | | | | |
| 4.x.x - Unifying Concepts | 14 | 394 | 86 | 13 | 1 | 0.86 | 0.02 | 319,534 | 84 | 15 | 0 | 0.84 | 0.02 | | | | | | | | |



2008-2009
INTERIM PERFORMANCE REPORT
SOCIAL STUDIES TREND DATA
Performance Level Percents

School: Northern Elementary School
 District: Fayette County
 Code: 165077
 Grade: 05

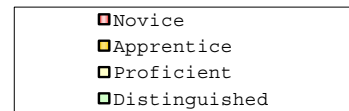
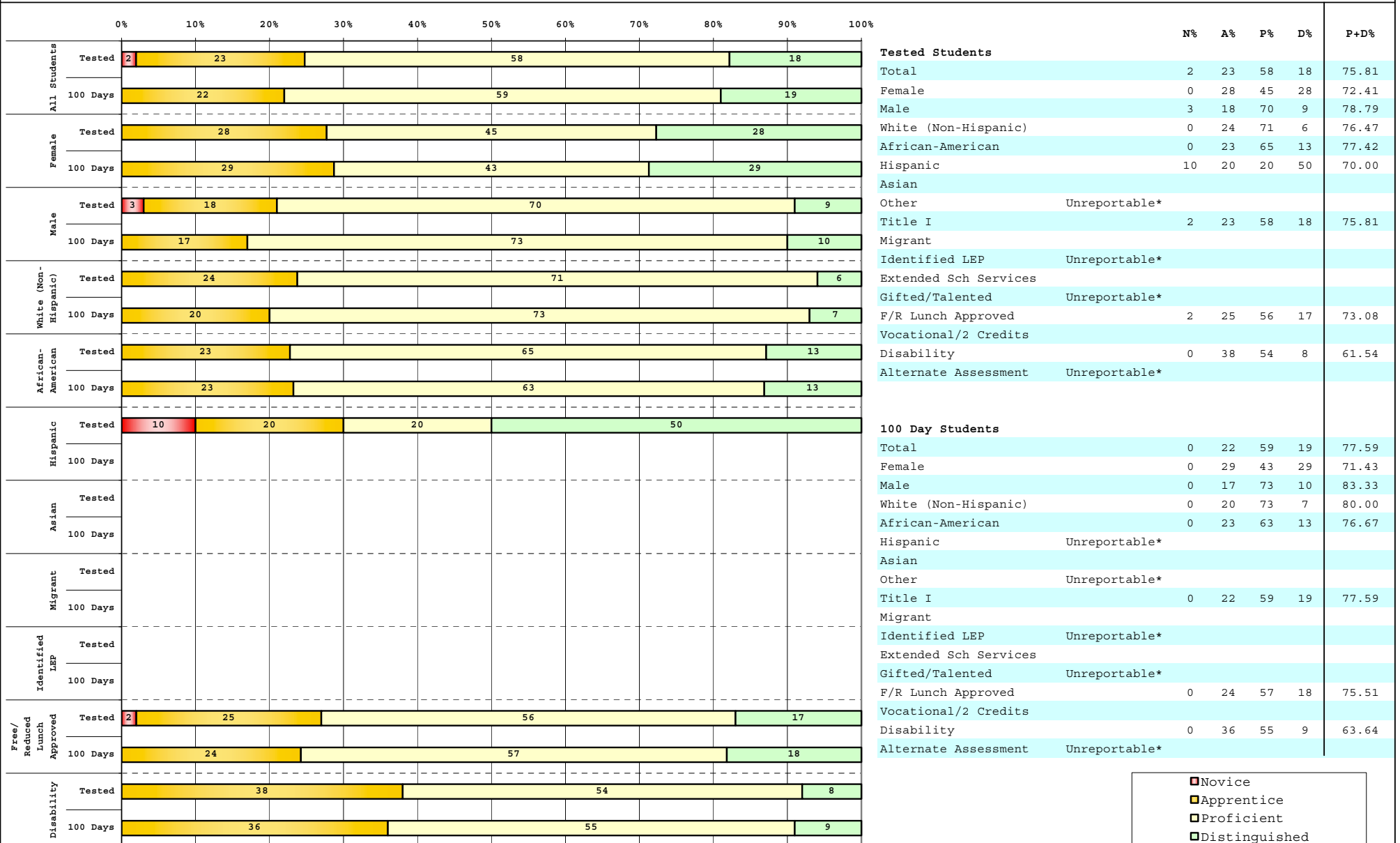


The horizontal bar represents the percent of students scoring at a performance level within a particular year. Percentages may not sum to 100% due to rounding.



**2008-2009
INTERIM PERFORMANCE REPORT
SOCIAL STUDIES DISAGGREGATION
Performance Level Percents**

School: Northern Elementary School
District: Fayette County
Code: 165077
Grade: 05



Percentage may not sum to 100% due to rounding. 'Unreportable*' indicates subpopulations with fewer than 10 students or subpopulations where all students score at the same performance level.



2008-2009
INTERIM PERFORMANCE REPORT
SOCIAL STUDIES CORE CONTENT

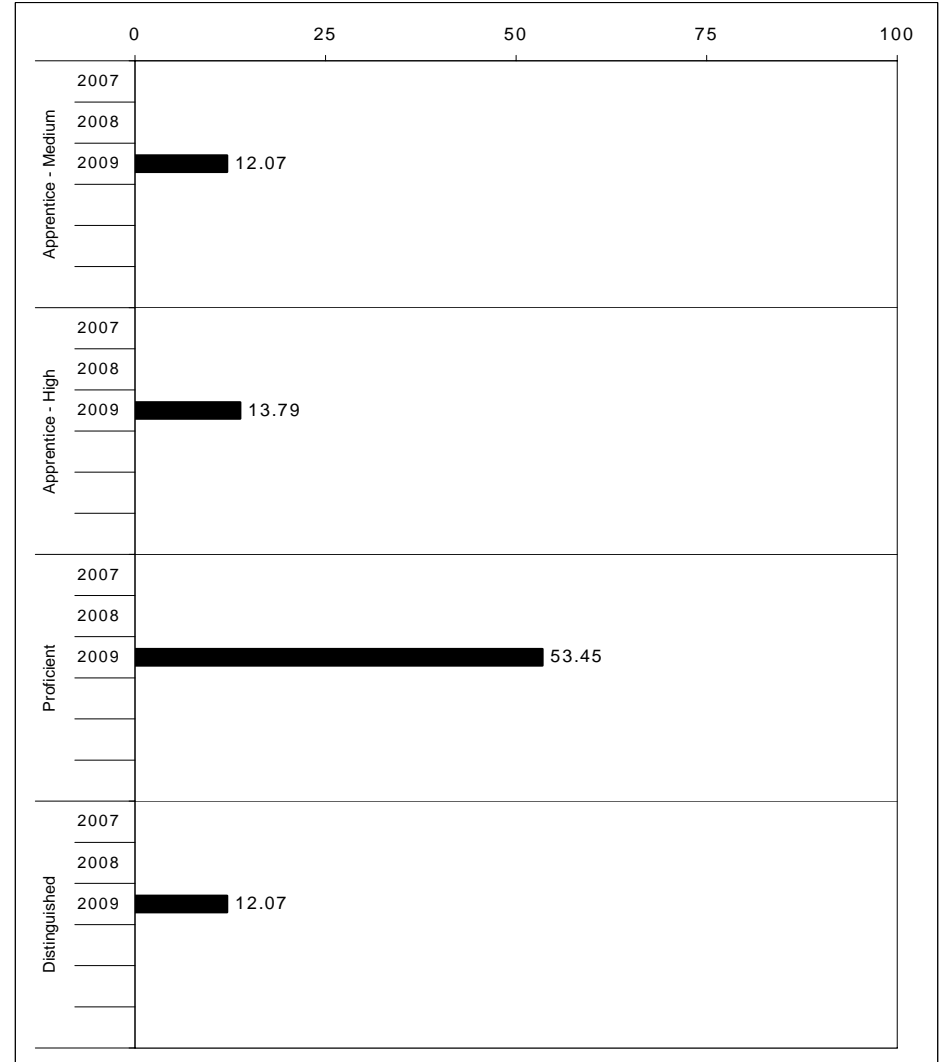
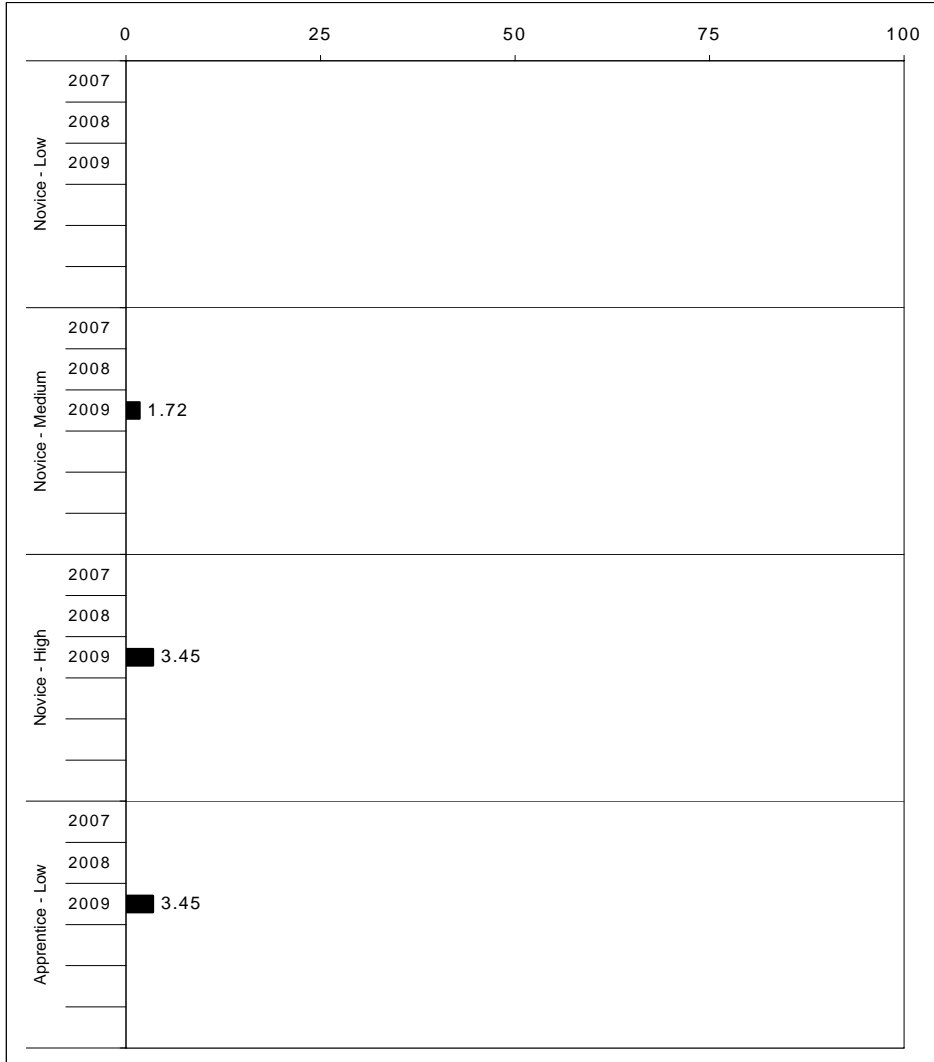
School: Northern Elementary School
 District: Fayette County
 Code: 165077
 Grade: 05

| | No. Items | No. Observations | SCHOOL | | | | | | | Mean | Std. Err. | No. Observations | STATE | | | | | | | Mean | School -State Mean |
|--------------------------------|--------------|---------------------|--------|----|----|----|----|----|------|------|--------------|---------------------|-------|----|----|----|---|------|-------|------|--------------------------|
| | | | B | 0 | 1 | 2 | 3 | 4 | B | | | | 0 | 1 | 2 | 3 | 4 | | | | |
| OPEN RESPONSE | | | | | | | | | | | | | | | | | | | | | |
| 1.x.x - Government & Civics | 2 | 67 | 0 | 1 | 15 | 57 | 24 | 3 | 2.1 | 0.1 | 56,903 | 0 | 5 | 37 | 45 | 10 | 2 | 1.7 | 0.4 | | |
| 2.x.x - Cultures & Societies | 1 | 8 | | | | | | | *** | | 8,151 | 0 | 4 | 21 | 56 | 15 | 4 | 1.9 | | | |
| 3.x.x - Economics | 1 | 57 | 0 | 0 | 21 | 58 | 18 | 4 | 2.0 | 0.1 | 48,828 | 0 | 11 | 33 | 41 | 12 | 3 | 1.6 | 0.4 | | |
| 4.x.x - Geography | 2 | 18 | 0 | 0 | 39 | 17 | 33 | 11 | 2.2 | 0.2 | 16,077 | 0 | 9 | 32 | 39 | 17 | 3 | 1.7 | 0.5 | | |
| 5.x.x - Historical Perspective | 3 | 78 | 0 | 4 | 27 | 47 | 15 | 6 | 1.9 | 0.1 | 65,353 | 0 | 7 | 35 | 46 | 10 | 2 | 1.7 | 0.2 | | |
| MULTIPLE CHOICE | | | | | | | | | | | | | | | | | | | | | |
| 1.x.x - Government & Civics | 14 | 369 | 63 | 37 | 0 | | | | 0.63 | 0.02 | 317,571 | 66 | 34 | 0 | | | | 0.66 | -0.03 | | |
| 2.x.x - Cultures & Societies | 11 | 249 | 82 | 19 | 0 | | | | 0.82 | 0.03 | 211,383 | 70 | 30 | 0 | | | | 0.69 | 0.13 | | |
| 3.x.x - Economics | 11 | 295 | 72 | 28 | 0 | | | | 0.72 | 0.03 | 252,215 | 73 | 27 | 0 | | | | 0.73 | -0.01 | | |
| 4.x.x - Geography | 16 | 435 | 74 | 26 | 0 | | | | 0.74 | 0.02 | 374,337 | 66 | 34 | 0 | | | | 0.66 | 0.08 | | |
| 5.x.x - Historical Perspective | 27 | 686 | 72 | 28 | 0 | | | | 0.72 | 0.02 | 586,076 | 69 | 31 | 0 | | | | 0.69 | 0.03 | | |



2008-2009
INTERIM PERFORMANCE REPORT
WRITING ON-DEMAND TREND DATA
Performance Level Percents

School: Northern Elementary School
 District: Fayette County
 Code: 165077
 Grade: 05

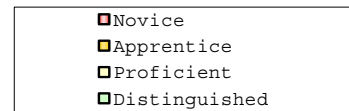
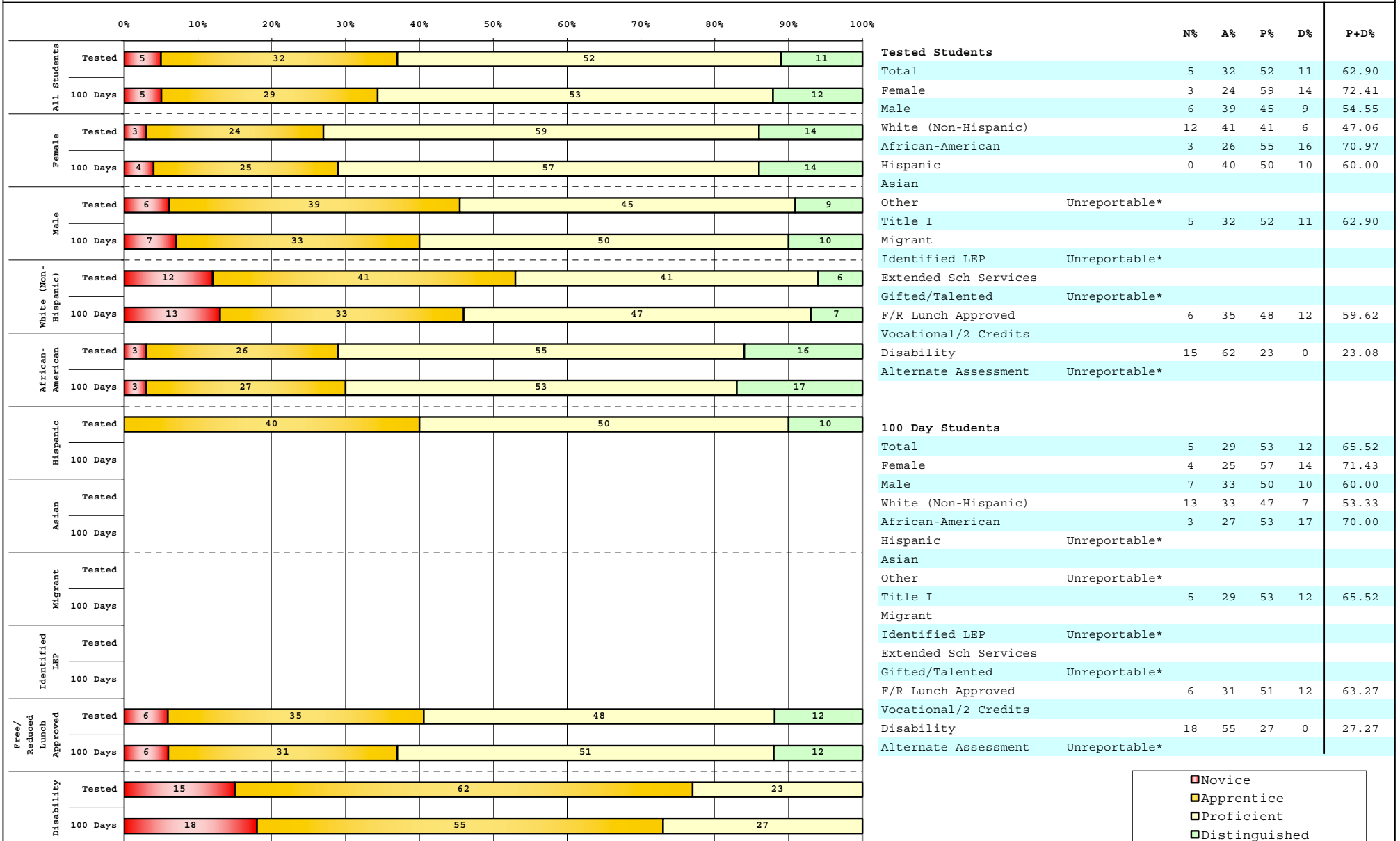


The horizontal bar represents the percent of students scoring at a performance level within a particular year. Percentages may not sum to 100% due to rounding.



2008-2009
INTERIM PERFORMANCE REPORT
WRITING ON-DEMAND DISAGGREGATION
Performance Level Percents

School: Northern Elementary School
 District: Fayette County
 Code: 165077
 Grade: 05



Percentage may not sum to 100% due to rounding. 'Unreportable*' indicates subpopulations with fewer than 10 students or subpopulations where all students score at the same performance level.



2008-2009
INTERIM PERFORMANCE REPORT
WRITING ON-DEMAND CORE CONTENT

School: Northern Elementary School
 District: Fayette County
 Code: 165077
 Grade: 05

| WRITING PROMPT | SCHOOL | | | | | | | | | | | | STATE | | | | | | | | | | | | School |
|------------------------------|------------------|----------|---|---|----|----|----|----|----|----|----|------|-------|----------|---|----|----|----|----|----|---|---|------|------|--------|
| | No. Observations | Percents | | | | | | | | | | | Mean | Percents | | | | | | | | | | | Mean |
| | B | 0 | 1 | 2 | 3 | 4 | 5 | 6 | 7 | 8 | | B | 0 | 1 | 2 | 3 | 4 | 5 | 6 | 7 | 8 | | | | |
| Inform | | | | | | | | | | | | | | | | | | | | | | | | | |
| 1.X.X - Content | 19 | 0 | 0 | 0 | 11 | 0 | 21 | 37 | 26 | 5 | 0 | 4.84 | 0 | 1 | 1 | 9 | 9 | 34 | 18 | 21 | 4 | 2 | 4.43 | 0.41 | |
| 2.X.X - Structure | 19 | 0 | 0 | 0 | 11 | 0 | 32 | 21 | 32 | 5 | 0 | 4.79 | 0 | 1 | 2 | 9 | 10 | 35 | 19 | 19 | 3 | 1 | 4.33 | 0.46 | |
| 3.X.X - Convention | 19 | 0 | 0 | 0 | 11 | 0 | 32 | 21 | 32 | 5 | 0 | 4.79 | 0 | 0 | 0 | 12 | 11 | 34 | 19 | 19 | 3 | 1 | 4.38 | 0.41 | |
| Narrate for a purpose | | | | | | | | | | | | | | | | | | | | | | | | | |
| 1.X.X - Content | 19 | 0 | 0 | 5 | 0 | 11 | 16 | 26 | 37 | 5 | 0 | 4.89 | 0 | 1 | 1 | 10 | 9 | 36 | 18 | 21 | 3 | 1 | 4.35 | 0.54 | |
| 2.X.X - Structure | 19 | 0 | 0 | 5 | 5 | 5 | 11 | 26 | 47 | 0 | 0 | 4.89 | 0 | 1 | 2 | 10 | 10 | 37 | 17 | 19 | 3 | 1 | 4.27 | 0.62 | |
| 3.X.X - Convention | 19 | 0 | 0 | 0 | 11 | 5 | 11 | 32 | 42 | 0 | 0 | 4.89 | 0 | 0 | 0 | 12 | 10 | 36 | 18 | 19 | 3 | 1 | 4.33 | 0.56 | |
| Persuade | | | | | | | | | | | | | | | | | | | | | | | | | |
| 1.X.X - Content | 19 | 0 | 0 | 0 | 0 | 11 | 21 | 11 | 32 | 21 | 5 | 5.47 | 0 | 1 | 1 | 8 | 8 | 33 | 19 | 21 | 5 | 3 | 4.50 | 0.97 | |
| 2.X.X - Structure | 19 | 0 | 0 | 0 | 0 | 11 | 16 | 16 | 42 | 11 | 5 | 5.42 | 0 | 2 | 2 | 9 | 10 | 33 | 19 | 20 | 5 | 2 | 4.42 | 1.00 | |
| 3.X.X - Convention | 19 | 0 | 0 | 0 | 0 | 11 | 16 | 21 | 42 | 0 | 11 | 5.37 | 0 | 0 | 0 | 11 | 10 | 32 | 19 | 20 | 5 | 2 | 4.50 | 0.87 | |

| MULTIPLE CHOICE | No. Items | SCHOOL | | | | | | STATE | | | | | | School |
|-------------------------|-----------|------------------|-----------|-----------|------|------|-----------|------------------|-----------|-----------|------|-------|-------------|--------|
| | | No. Observations | Percents | | | Mean | Std. Err. | No. Observations | Percents | | | Mean | -State Mean | |
| | | Correct | Incorrect | Omit/Mult | | | | Correct | Incorrect | Omit/Mult | | | | |
| 4.x.x - Writing Process | 52 | 70 | 30 | 0 | 0.70 | 0.02 | 585,936 | 73 | 27 | 0 | 0.73 | -0.03 | | |
| 4.10.x - Revising | 16 | 69 | 31 | 0 | 0.69 | 0.04 | 130,317 | 66 | 34 | 0 | 0.66 | 0.03 | | |
| 4.11.x - Editing | 36 | 70 | 30 | 0 | 0.70 | 0.02 | 455,619 | 75 | 24 | 0 | 0.75 | -0.05 | | |