



Interim Performance Report

In March 2009, the Kentucky General Assembly passed Senate Bill 1 (SB1) that was subsequently signed into law by the Governor. SB1 calls for a significant overhaul of the state's assessment and accountability system. The new assessment system begins in the spring of 2012. The school years of 2008-2009, 2009-2010 and 2010-2011 are described in SB1 as an interim period. This three-year period allows Kentucky to develop the new assessment system and to carry on state and federal testing requirements.

The Interim Performance Report includes the Kentucky Core Content Test (KCCT) in Reading (grades 3-8 and 10), Mathematics (grades 3-8 and 11), Science (grades 4, 7 and 11), Social Studies (grades 5, 8 and 11) and Writing On-Demand (grades 5, 8 and 12). The KCCT is based on the Kentucky Core Content for Assessment (Version 4.1) and contains multiple choice and open response questions. The Writing On-Demand test uses writing prompts that require students to craft a piece of writing in a 60 minute period.

The KCCT is developed under the direction of content advisory committees of Kentucky educators who draft, review and select test questions. All test items are reviewed by a bias review committee to enhance the fairness of items for all Kentucky students.

The KCCT continues to fulfill the requirements of the federal statute known as the No Child Left Behind Act of 2001. A separate accountability report for No Child Left Behind (NCLB) is published by the Kentucky Department of Education.

The Interim Performance Report focuses entirely on the five state-required content areas and provides data for schools or districts. The data in this report is not used directly for state accountability; although, these results can fulfill the requirements of Senate Bill 168 from 2002 and may be used by schools or districts for their own local accountability needs.

Performance standards are based on descriptions of Novice, Apprentice, Proficient and Distinguished (NAPD) student performance levels specific to the content area and grade being assessed. The performance standards, in conjunction with Kentucky's Core Content for Assessment, should allow instruction to better focus on the content area to be taught and on how well students must demonstrate achievement in each content area.

Reporting Changes for 2009

Based on SB1, Kentucky will not be reporting state accountability and academic indices as in the past. The report does have several familiar pages with performance level (NAPD) trend, core content and disaggregation data per content area. Districts and schools will still see distributions of how students scored in the Novice (with sublevels), Apprentice (with sublevels), Proficient and Distinguished performance levels.

Confidentiality Changes

Due to federal regulations around the Family Education Rights and Privacy Act (FERPA), the numbers of students have been removed. Though there is a need to report as much data as possible, there is also a paramount need to maintain the confidential aspects of individual scores. When scores are reported in what is commonly called "small cells" where very few students may be categorized, there is the possibility of revealing individual scores when numbers are reported. Numbers are reported to each district in a confidential report that accompanies the public Interim Performance Report.

**2008-2009
INTERIM PERFORMANCE REPORT**

School: Meadowthorpe Elementary School
District: Fayette County
Code: 165160
Grade: PRIMARY-05

CONTENTS OF THIS REPORT

Introduction	1
Academic Trend Data	
Reading Results	2-8
Mathematics Results	9-15
Science Results	16-18
Social Studies Results	19-21
Writing Results	22-24

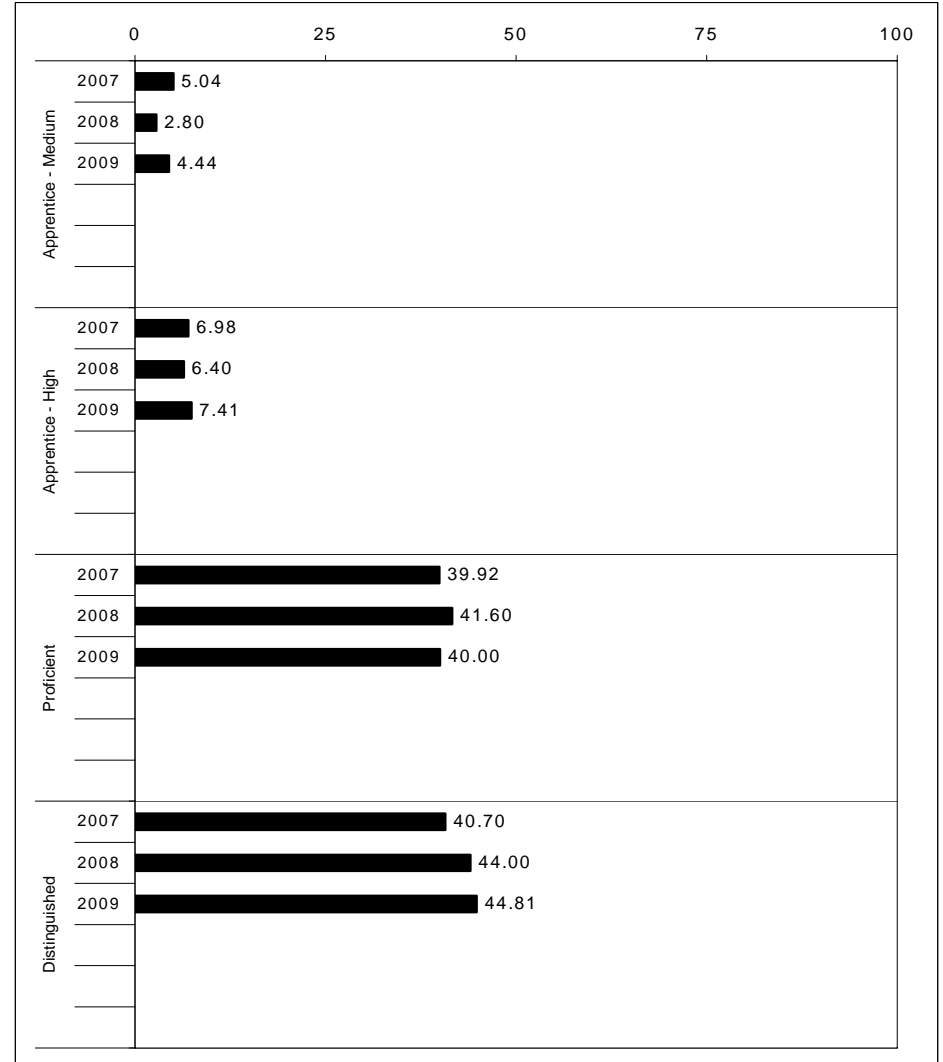
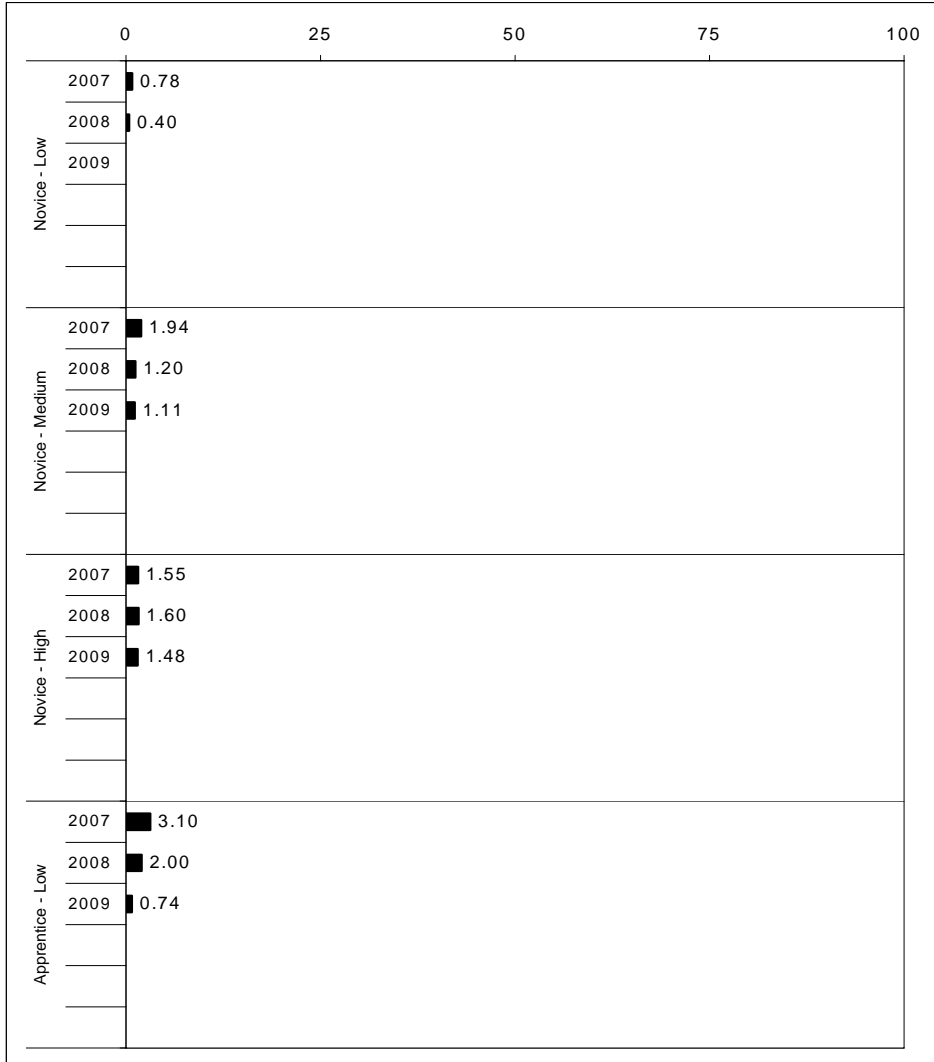
For more information, refer to the 2009 Interim Assessment Interpretative Guide on the Kentucky Department of Education Web site (www.education.ky.gov).





2008-2009
INTERIM PERFORMANCE REPORT
READING TREND DATA
Performance Level Percents

School: Meadowthorpe Elementary School
 District: Fayette County
 Code: 165160
 Grade: ELEMENTARY



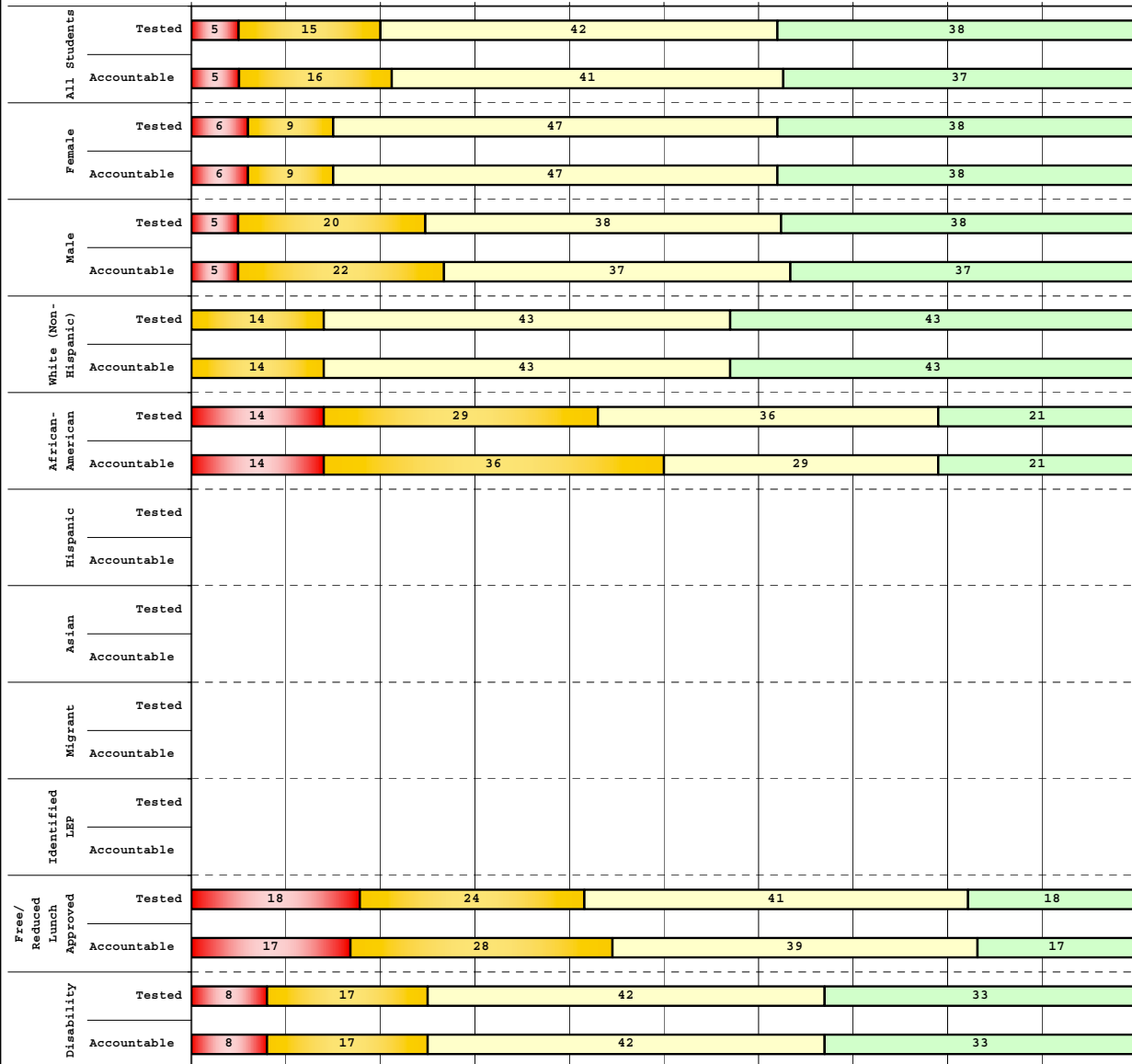
The horizontal bar represents the percent of students scoring at a performance level within a particular year. Percentages may not sum to 100% due to rounding.



**2008-2009
INTERIM PERFORMANCE REPORT
READING DISAGGREGATION
Performance Level Percents**

School: Meadowthorpe Elementary School
 District: Fayette County
 Code: 165160
 Grade: 03

0% 10% 20% 30% 40% 50% 60% 70% 80% 90% 100%



	N%	A%	P%	D%	P+D%
Tested Students					
Total	5	15	42	38	79.73
Female	6	9	47	38	85.29
Male	5	20	38	38	75.00
White (Non-Hispanic)	0	14	43	43	85.71
African-American	14	29	36	21	57.14
Hispanic	Unreportable*				
Asian	Unreportable*				
Other	Unreportable*				
Title I					
Migrant					
Identified LEP	Unreportable*				
Extended Sch Services					
Gifted/Talented					
F/R Lunch Approved	18	24	41	18	58.82
Vocational/2 Credits					
Disability	8	17	42	33	75.00
Alternate Assessment					
NCLB Accountable Students					
Total	5	16	41	37	78.67
Female	6	9	47	38	85.29
Male	5	22	37	37	73.17
White (Non-Hispanic)	0	14	43	43	85.71
African-American	14	36	29	21	50.00
Hispanic	Unreportable*				
Asian	Unreportable*				
Other	Unreportable*				
Title I					
Migrant					
Identified LEP	Unreportable*				
Extended Sch Services					
Gifted/Talented					
F/R Lunch Approved	17	28	39	17	55.56
Vocational/2 Credits					
Disability	8	17	42	33	75.00
Alternate Assessment					

■ Novice
■ Apprentice
■ Proficient
■ Distinguished

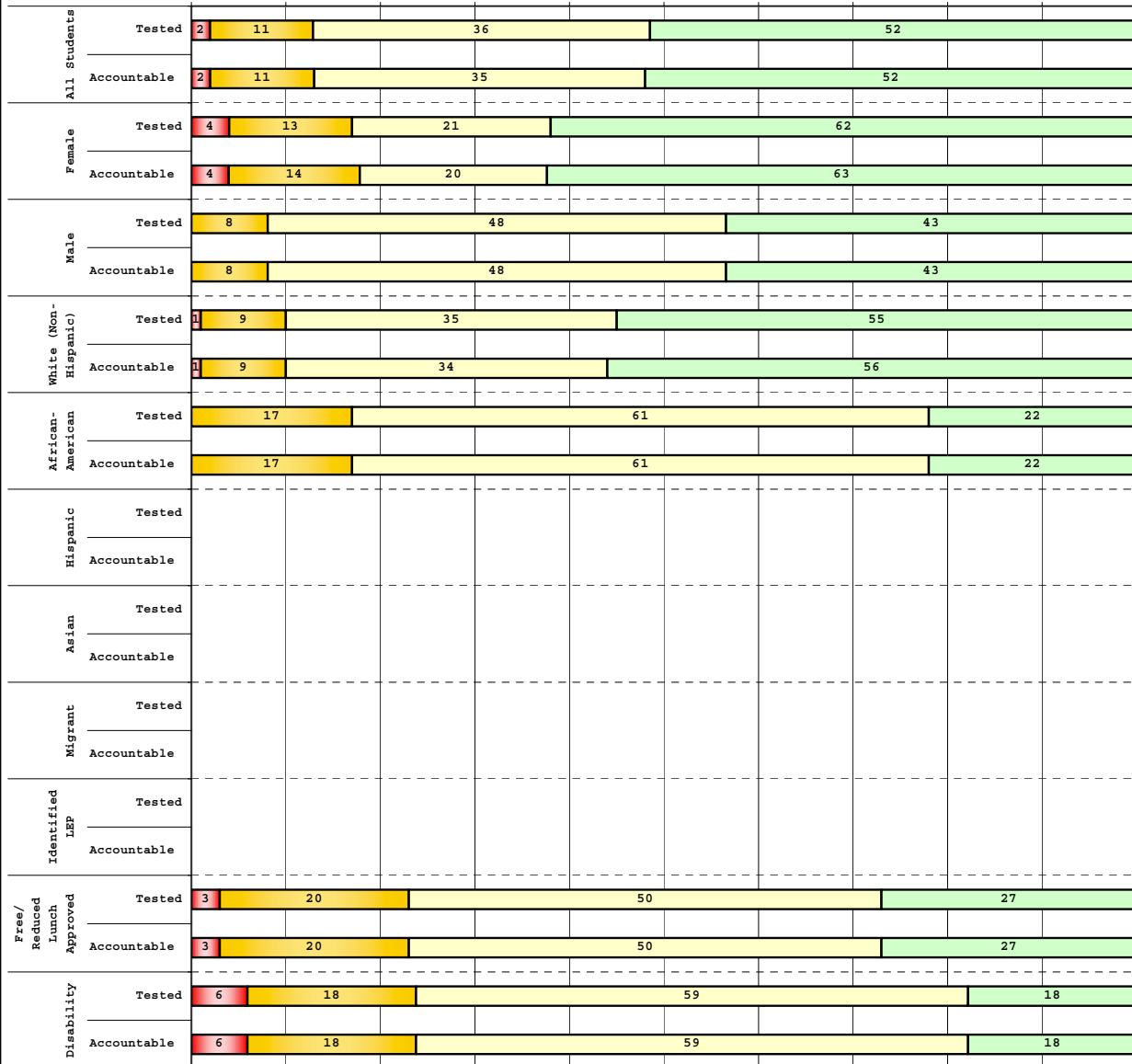
Percentage may not sum to 100% due to rounding. 'Unreportable*' indicates subpopulations with fewer than 10 students or subpopulations where all students score at the same performance level.



**2008-2009
INTERIM PERFORMANCE REPORT
READING DISAGGREGATION
Performance Level Percents**

School: Meadowthorpe Elementary School
District: Fayette County
Code: 165160
Grade: 04

0% 10% 20% 30% 40% 50% 60% 70% 80% 90% 100%



	N%	A%	P%	D%	P+D%
Tested Students					
Total	2	11	36	52	87.50
Female	4	13	21	62	82.69
Male	0	8	48	43	91.67
White (Non-Hispanic)	1	9	35	55	89.86
African-American	0	17	61	22	83.33
Hispanic	Unreportable*				
Asian	Unreportable*				
Other	Unreportable*				
Title I					
Migrant	Unreportable*				
Identified LEP	Unreportable*				
Extended Sch Services					
Gifted/Talented					
F/R Lunch Approved	3	20	50	27	76.67
Vocational/2 Credits					
Disability	6	18	59	18	76.47
Alternate Assessment					
NCLB Accountable Students					
Total	2	11	35	52	87.39
Female	4	14	20	63	82.35
Male	0	8	48	43	91.67
White (Non-Hispanic)	1	9	34	56	89.71
African-American	0	17	61	22	83.33
Hispanic	Unreportable*				
Asian	Unreportable*				
Other	Unreportable*				
Title I					
Migrant	Unreportable*				
Identified LEP	Unreportable*				
Extended Sch Services					
Gifted/Talented					
F/R Lunch Approved	3	20	50	27	76.67
Vocational/2 Credits					
Disability	6	18	59	18	76.47
Alternate Assessment					

■ Novice
■ Apprentice
■ Proficient
■ Distinguished

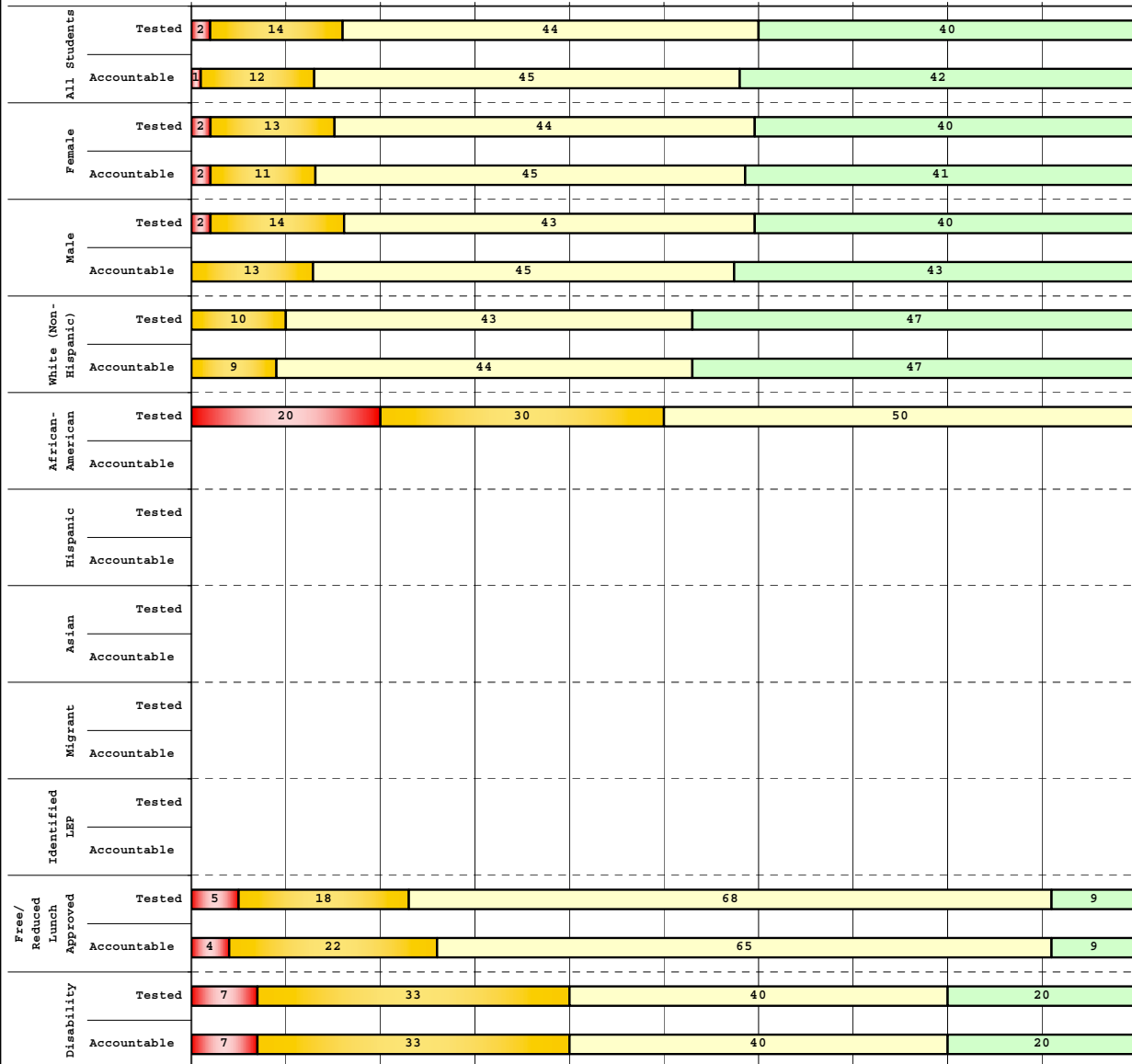
Percentage may not sum to 100% due to rounding. 'Unreportable*' indicates subpopulations with fewer than 10 students or subpopulations where all students score at the same performance level.



**2008-2009
INTERIM PERFORMANCE REPORT
READING DISAGGREGATION
Performance Level Percents**

School: Meadowthorpe Elementary School
 District: Fayette County
 Code: 165160
 Grade: 05

0% 10% 20% 30% 40% 50% 60% 70% 80% 90% 100%



Tested Students

	N%	A%	P%	D%	P+D%
Total	2	14	44	40	83.91
Female	2	13	44	40	84.44
Male	2	14	43	40	83.33
White (Non-Hispanic)	0	10	43	47	89.66
African-American	20	30	50	0	50.00
Hispanic	Unreportable*				
Asian	Unreportable*				
Other	Unreportable*				
Title I					
Migrant					
Identified LEP	Unreportable*				
Extended Sch Services					
Gifted/Talented					
F/R Lunch Approved	5	18	68	9	77.27
Vocational/2 Credits					
Disability	7	33	40	20	60.00
Alternate Assessment	Unreportable*				

NCLB Accountable Students

	N%	A%	P%	D%	P+D%
Total	1	12	45	42	86.90
Female	2	11	45	41	86.36
Male	0	13	45	43	87.50
White (Non-Hispanic)	0	9	44	47	91.23
African-American	Unreportable*				
Hispanic	Unreportable*				
Asian	Unreportable*				
Other	Unreportable*				
Title I					
Migrant					
Identified LEP	Unreportable*				
Extended Sch Services					
Gifted/Talented					
F/R Lunch Approved	4	22	65	9	73.91
Vocational/2 Credits					
Disability	7	33	40	20	60.00
Alternate Assessment	Unreportable*				

■ Novice
■ Apprentice
■ Proficient
■ Distinguished

Percentage may not sum to 100% due to rounding. 'Unreportable*' indicates subpopulations with fewer than 10 students or subpopulations where all students score at the same performance level.



2008-2009
INTERIM PERFORMANCE REPORT
READING CORE CONTENT

School: Meadowthorpe Elementary School
 District: Fayette County
 Code: 165160
 Grade: 03

	No. Items	No. Observations	SCHOOL								Std. Err.	No. Observations	STATE								School -State Mean
			B	0	1	2	3	4	Mean	B			0	1	2	3	4	Mean			
OPEN RESPONSE																					
2.0.x - Developing Understanding	2	150	0	7	20	38	28	7	2.1	0.1	100,212	0	10	30	44	14	2	1.7	0.4		
3.0.x - Interpreting Text	2	150	0	7	20	38	28	7	2.1	0.1	100,212	0	10	30	44	14	2	1.7	0.4		
MULTIPLE CHOICE																					
1.0.x - Forming a Foundation	32	586	87	13	0				0.87	0.02	392,589	83	17	0				0.83	0.04		
2.0.x - Developing Understanding	89	1,487	83	17	0				0.83	0.01	993,477	80	20	0				0.80	0.03		
3.0.x - Interpreting Text	31	699	79	21	0				0.79	0.02	468,115	77	23	0				0.77	0.02		
5.0.x - Critical Stance	15	313	86	14	0				0.86	0.02	208,359	79	21	0				0.79	0.07		



2008-2009
INTERIM PERFORMANCE REPORT
READING CORE CONTENT

School: Meadowthorpe Elementary School
 District: Fayette County
 Code: 165160
 Grade: 04

	No. Items	No. Observations	SCHOOL							Mean	Std. Err.	No. Observations	STATE							Mean	School -State Mean
			B	0	1	2	3	4	B				0	1	2	3	4				
OPEN RESPONSE																					
2.0.x - Developing Understanding	5	188	0	2	7	44	38	9	2.4	0.1	81,849	0	3	24	52	18	3	1.9	0.5		
3.0.x - Interpreting Text	6	293	0	1	8	38	37	16	2.6	0.1	131,199	0	4	22	45	23	5	2.0	0.6		
MULTIPLE CHOICE																					
1.0.x - Forming a Foundation	34	891	82	18	0				0.82	0.02	401,452	72	28	0				0.71	0.11		
2.0.x - Developing Understanding	76	1,970	81	19	0				0.81	0.01	868,422	73	27	0				0.73	0.08		
3.0.x - Interpreting Text	29	643	87	13	0				0.87	0.02	278,648	79	21	0				0.79	0.08		
5.0.x - Critical Stance	9	358	83	17	0				0.83	0.02	155,704	74	26	0				0.74	0.09		



2008-2009
INTERIM PERFORMANCE REPORT
READING CORE CONTENT

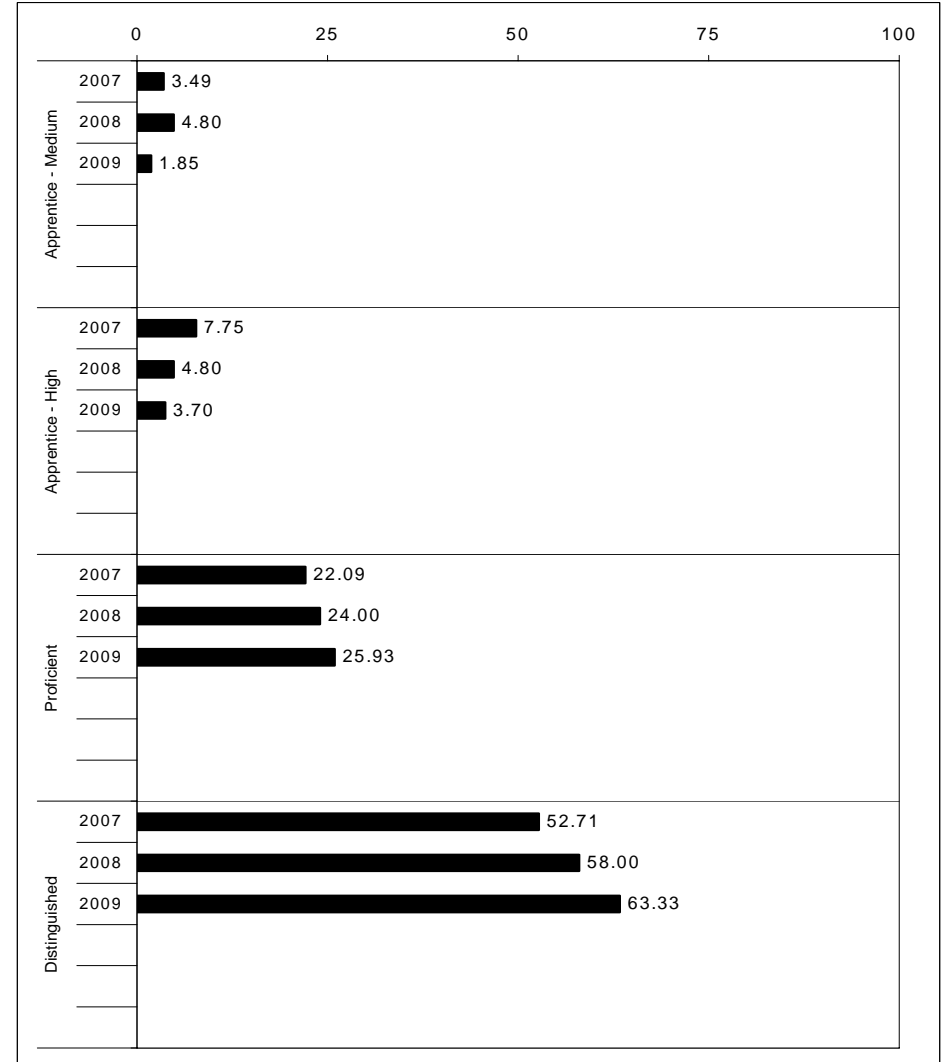
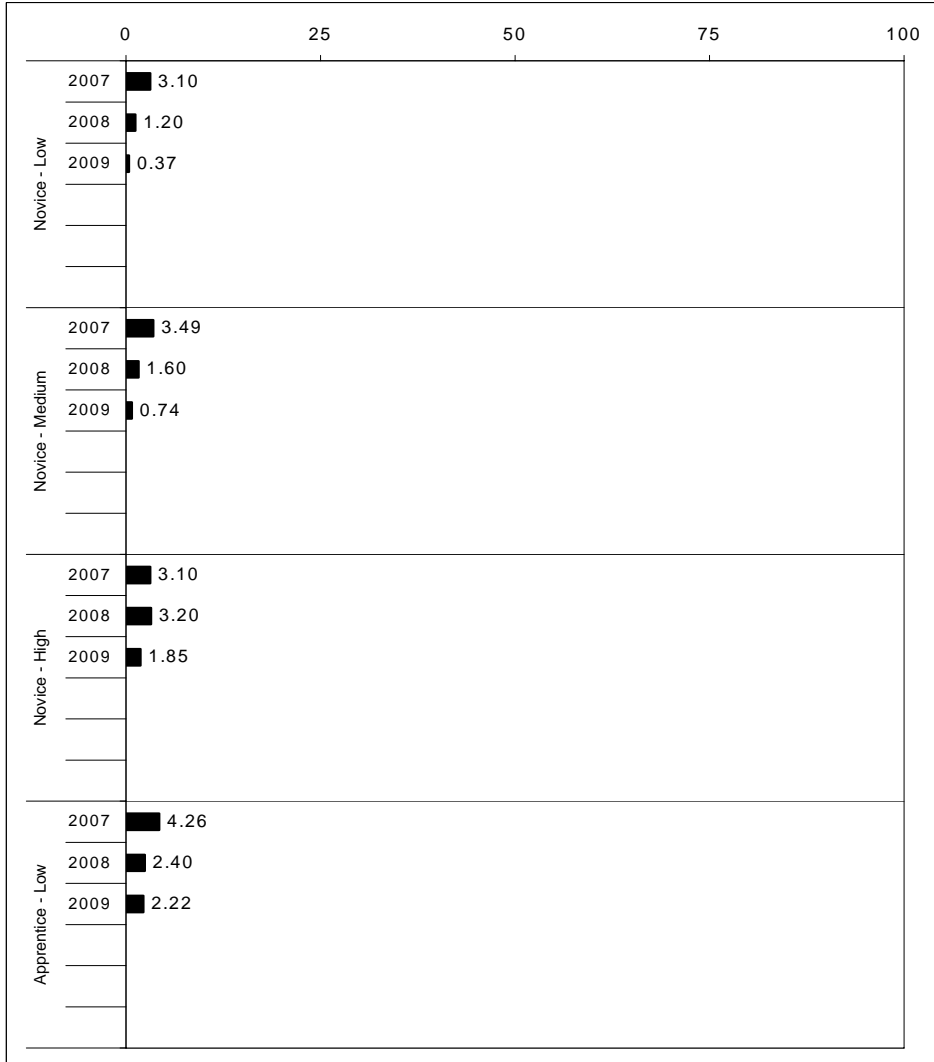
School: Meadowthorpe Elementary School
 District: Fayette County
 Code: 165160
 Grade: 05

	No. Items	No. Observations	SCHOOL							Mean	Std. Err.	No. Observations	STATE							Mean	School -State Mean
			B	0	1	2	3	4	Percents				B	0	1	2	3	4	Percents		
OPEN RESPONSE																					
2.0.x - Developing Understanding	6	152	0	1	13	48	25	13	2.3	0.1	89,507	0	5	23	48	20	5	2.0	0.3		
3.0.x - Interpreting Text	6	224	0	1	14	47	28	10	2.3	0.1	130,403	0	5	21	50	19	4	2.0	0.3		
MULTIPLE CHOICE																					
1.0.x - Forming a Foundation	28	463	85	15	0				0.85	0.02	268,187	74	26	0				0.74	0.11		
2.0.x - Developing Understanding	71	1,389	87	13	0				0.87	0.01	823,068	80	20	0				0.80	0.07		
3.0.x - Interpreting Text	27	585	87	13	0				0.87	0.02	341,653	81	19	0				0.81	0.06		
5.0.x - Critical Stance	17	509	84	16	0				0.84	0.02	300,671	75	25	0				0.75	0.09		



2008-2009
INTERIM PERFORMANCE REPORT
MATHEMATICS TREND DATA
Performance Level Percents

School: Meadowthorpe Elementary School
 District: Fayette County
 Code: 165160
 Grade: ELEMENTARY



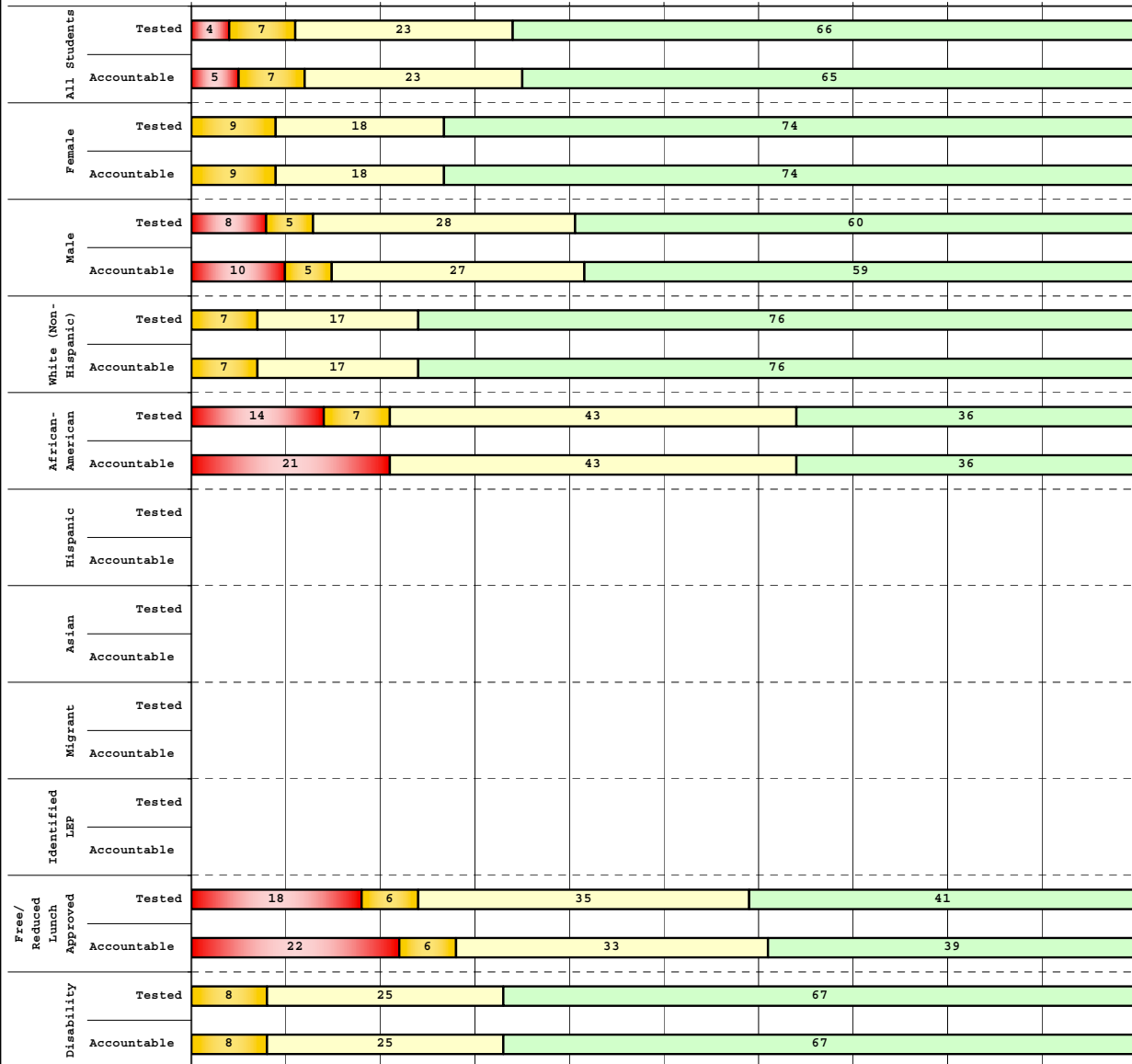
The horizontal bar represents the percent of students scoring at a performance level within a particular year. Percentages may not sum to 100% due to rounding.



**2008-2009
INTERIM PERFORMANCE REPORT
MATHEMATICS DISAGGREGATION
Performance Level Percents**

School: Meadowthorpe Elementary School
District: Fayette County
Code: 165160
Grade: 03

0% 10% 20% 30% 40% 50% 60% 70% 80% 90% 100%



Tested Students

	N%	A%	P%	D%	P+D%
Total	4	7	23	66	89.19
Female	0	9	18	74	91.18
Male	8	5	28	60	87.50
White (Non-Hispanic)	0	7	17	76	92.86
African-American	14	7	43	36	78.57
Hispanic	Unreportable*				
Asian	Unreportable*				
Other	Unreportable*				
Title I					
Migrant					
Identified LEP	Unreportable*				
Extended Sch Services					
Gifted/Talented					
F/R Lunch Approved	18	6	35	41	76.47
Vocational/2 Credits					
Disability	0	8	25	67	91.67
Alternate Assessment					

NCLB Accountable Students

	N%	A%	P%	D%	P+D%
Total	5	7	23	65	88.00
Female	0	9	18	74	91.18
Male	10	5	27	59	85.37
White (Non-Hispanic)	0	7	17	76	92.86
African-American	21	0	43	36	78.57
Hispanic	Unreportable*				
Asian	Unreportable*				
Other	Unreportable*				
Title I					
Migrant					
Identified LEP	Unreportable*				
Extended Sch Services					
Gifted/Talented					
F/R Lunch Approved	22	6	33	39	72.22
Vocational/2 Credits					
Disability	0	8	25	67	91.67
Alternate Assessment					

■	Novice
■	Apprentice
■	Proficient
■	Distinguished

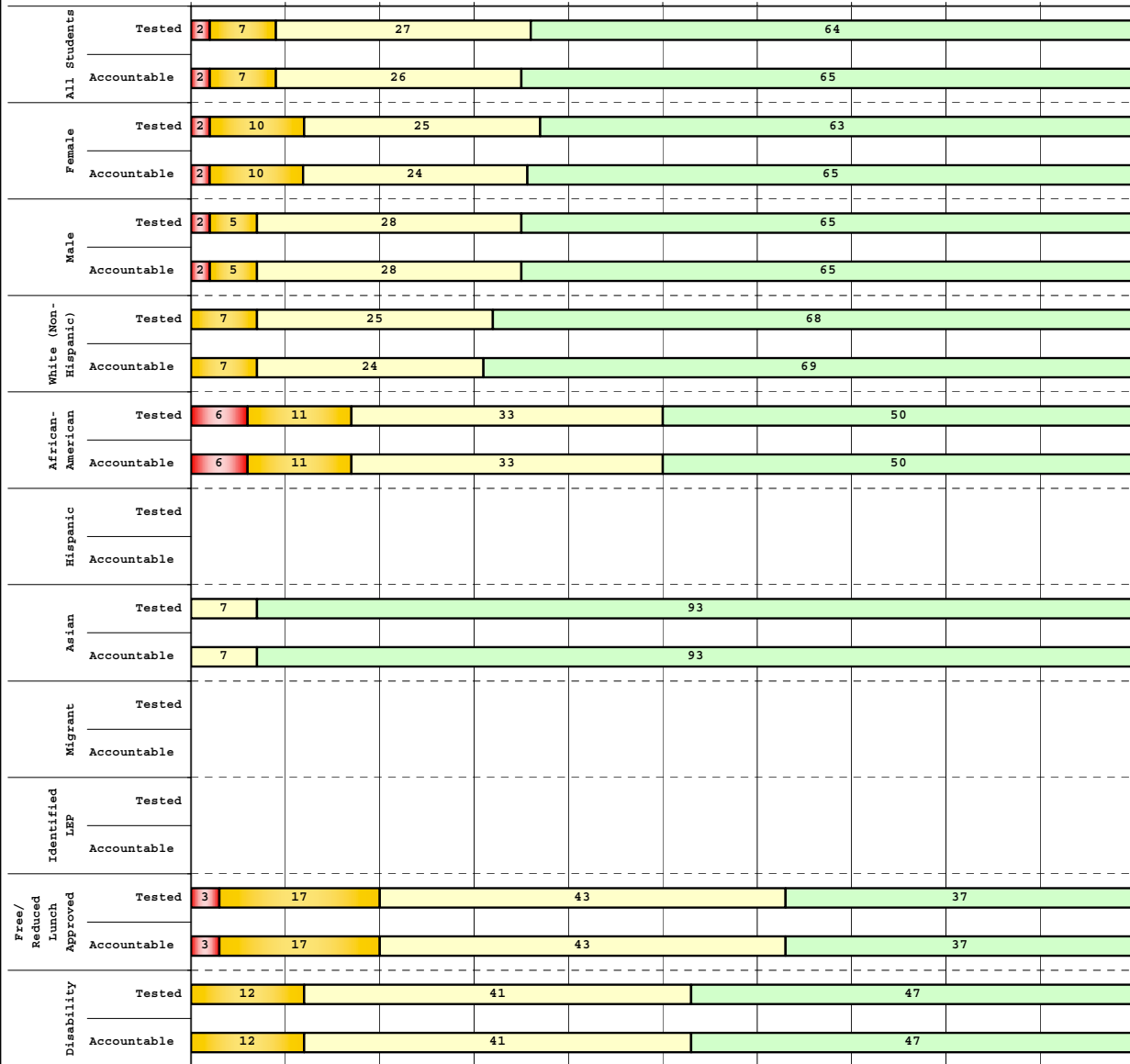
Percentage may not sum to 100% due to rounding. 'Unreportable*' indicates subpopulations with fewer than 10 students or subpopulations where all students score at the same performance level.



2008-2009
INTERIM PERFORMANCE REPORT
MATHEMATICS DISAGGREGATION
Performance Level Percents

School: Meadowthorpe Elementary School
 District: Fayette County
 Code: 165160
 Grade: 04

0% 10% 20% 30% 40% 50% 60% 70% 80% 90% 100%



	N%	A%	P%	D%	P+D%
Tested Students					
Total	2	7	27	64	91.07
Female	2	10	25	63	88.46
Male	2	5	28	65	93.33
White (Non-Hispanic)	0	7	25	68	92.75
African-American	6	11	33	50	83.33
Hispanic	Unreportable*				
Asian	0	0	7	93	100.00
Other	Unreportable*				
Title I	Unreportable*				
Migrant	Unreportable*				
Identified LEP	Unreportable*				
Extended Sch Services	Unreportable*				
Gifted/Talented	Unreportable*				
F/R Lunch Approved	3	17	43	37	80.00
Vocational/2 Credits	Unreportable*				
Disability	0	12	41	47	88.24
Alternate Assessment	Unreportable*				
NCLB Accountable Students					
Total	2	7	26	65	90.99
Female	2	10	24	65	88.24
Male	2	5	28	65	93.33
White (Non-Hispanic)	0	7	24	69	92.65
African-American	6	11	33	50	83.33
Hispanic	Unreportable*				
Asian	0	0	7	93	100.00
Other	Unreportable*				
Title I	Unreportable*				
Migrant	Unreportable*				
Identified LEP	Unreportable*				
Extended Sch Services	Unreportable*				
Gifted/Talented	Unreportable*				
F/R Lunch Approved	3	17	43	37	80.00
Vocational/2 Credits	Unreportable*				
Disability	0	12	41	47	88.24
Alternate Assessment	Unreportable*				

■ Novice
■ Apprentice
■ Proficient
■ Distinguished

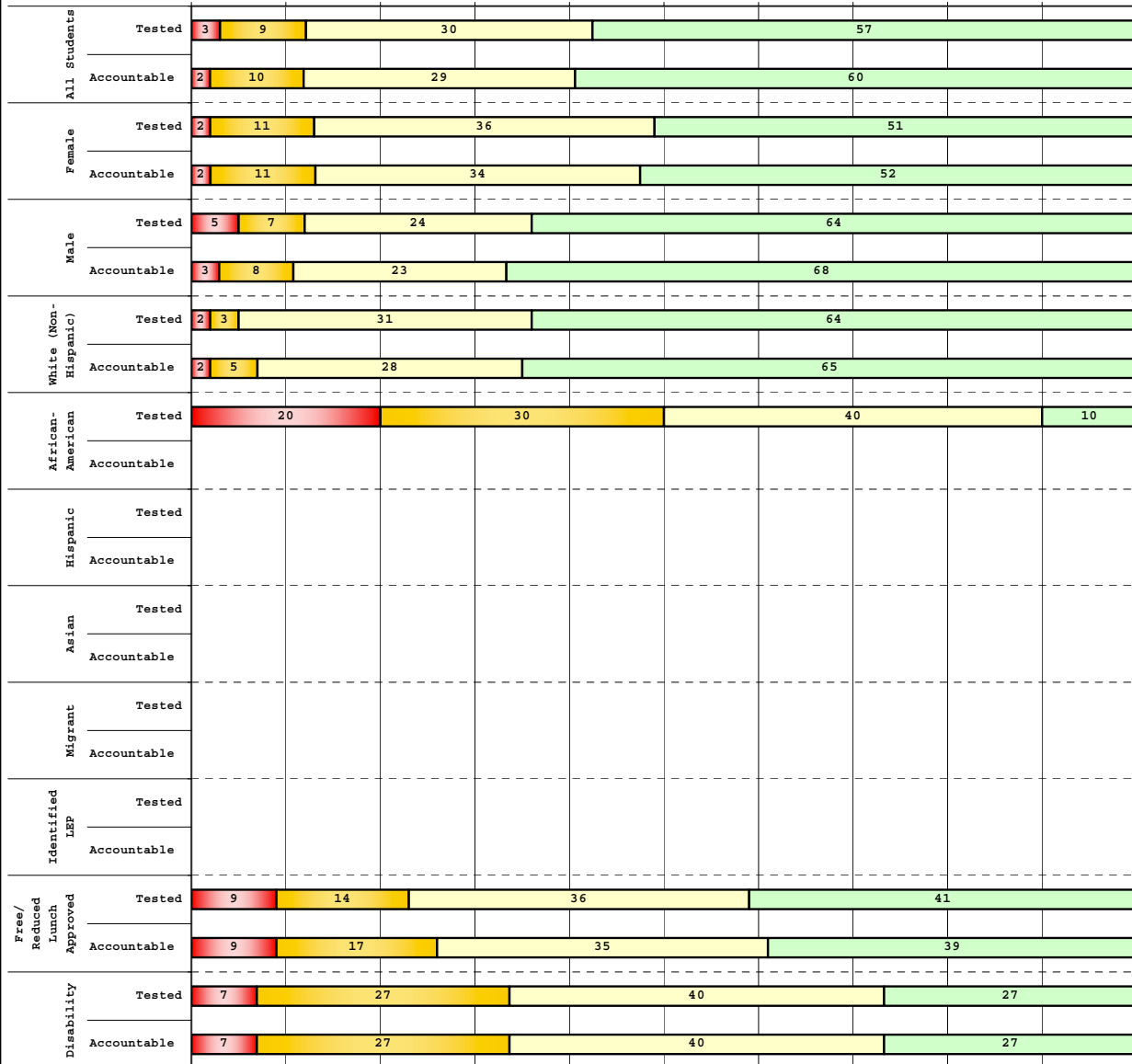
Percentage may not sum to 100% due to rounding. 'Unreportable*' indicates subpopulations with fewer than 10 students or subpopulations where all students score at the same performance level.



2008-2009
INTERIM PERFORMANCE REPORT
MATHEMATICS DISAGGREGATION
Performance Level Percents

School: Meadowthorpe Elementary School
 District: Fayette County
 Code: 165160
 Grade: 05

0% 10% 20% 30% 40% 50% 60% 70% 80% 90% 100%



	N%	A%	P%	D%	P+D%
Tested Students					
Total	3	9	30	57	87.36
Female	2	11	36	51	86.67
Male	5	7	24	64	88.10
White (Non-Hispanic)	2	3	31	64	94.83
African-American	20	30	40	10	50.00
Hispanic	Unreportable*				
Asian	Unreportable*				
Other	Unreportable*				
Title I					
Migrant					
Identified LEP	Unreportable*				
Extended Sch Services					
Gifted/Talented					
F/R Lunch Approved	9	14	36	41	77.27
Vocational/2 Credits					
Disability	7	27	40	27	66.67
Alternate Assessment	Unreportable*				
NCLB Accountable Students					
Total	2	10	29	60	88.10
Female	2	11	34	52	86.36
Male	3	8	23	68	90.00
White (Non-Hispanic)	2	5	28	65	92.98
African-American	Unreportable*				
Hispanic	Unreportable*				
Asian	Unreportable*				
Other	Unreportable*				
Title I					
Migrant					
Identified LEP	Unreportable*				
Extended Sch Services					
Gifted/Talented					
F/R Lunch Approved	9	17	35	39	73.91
Vocational/2 Credits					
Disability	7	27	40	27	66.67
Alternate Assessment	Unreportable*				

■ Novice
■ Apprentice
■ Proficient
■ Distinguished

Percentage may not sum to 100% due to rounding. 'Unreportable*' indicates subpopulations with fewer than 10 students or subpopulations where all students score at the same performance level.



2008-2009
INTERIM PERFORMANCE REPORT
MATHEMATICS CORE CONTENT

School: Meadowthorpe Elementary School
 District: Fayette County
 Code: 165160
 Grade: 03

	No. Items	No. Observations	SCHOOL								STATE								School -State Mean
			Percents						Mean	Std. Err.	Percents						Mean		
			B	0	1	2	3	4					No. Observations	B	0	1		2	3
OPEN RESPONSE																			
1.x.x - Number Prop Oper	5	188	0	11	26	25	15	23	2.1	0.1	125,243	0	21	35	26	10	8	1.5	0.6
2.x.x - Measurement	1	13	0	23	0	31	8	38	2.4	0.4	8,325	0	25	5	30	14	25	2.1	0.3
3.x.x - Geometry	2	23	0	9	17	35	13	26	2.3	0.3	16,777	0	8	24	35	13	20	2.1	0.2
4.x.x - Data Analysis & Probabilit	1	75	0	5	9	15	19	52	3.0	0.1	50,106	0	9	13	19	27	32	2.6	0.4
5.x.x - Algebraic Thinking	2	89	0	4	10	15	18	53	3.0	0.1	58,404	0	9	14	19	28	31	2.6	0.4
MULTIPLE CHOICE																			
			Correct	Incorrect	Omit/Mult							Correct	Incorrect	Omit/Mult					
1.x.x - Number Prop Oper	32	1,212	84	16	0	0.84	0.01	810,106	74	26	0	0.74	0.10						
2.x.x - Measurement	7	277	89	11	0	0.89	0.02	183,647	81	18	0	0.81	0.08						
3.x.x - Geometry	18	600	92	8	0	0.92	0.01	400,848	85	15	0	0.85	0.07						
4.x.x - Data Analysis & Probabilit	8	286	82	18	0	0.82	0.03	192,126	69	31	0	0.69	0.13						
5.x.x - Algebraic Thinking	11	325	85	15	0	0.85	0.02	217,089	78	22	0	0.78	0.07						



2008-2009
INTERIM PERFORMANCE REPORT
MATHEMATICS CORE CONTENT

School: Meadowthorpe Elementary School
 District: Fayette County
 Code: 165160
 Grade: 04

	No. Items	No. Observations	SCHOOL								Std. Err.	No. Observations	STATE						School -State Mean
			B	0	1	2	3	4	Mean	B			0	1	2	3	4	Mean	
OPEN RESPONSE																			
1.x.x - Number Prop Oper	4	168	0	8	10	27	24	30	2.6	0.1	73,656	0	17	24	29	19	12	1.9	0.7
2.x.x - Measurement	1	21	0	24	5	10	29	33	2.4	0.3	8,195	0	43	13	10	20	13	1.5	0.9
3.x.x - Geometry	2	127	0	2	6	17	21	54	3.2	0.1	57,352	0	11	20	17	19	33	2.4	0.8
4.x.x - Data Analysis & Probabilit	1	21	0	5	24	10	33	29	2.6	0.2	8,152	0	5	36	29	23	6	1.9	0.7
5.x.x - Algebraic Thinking	2	128	0	2	16	22	33	28	2.7	0.1	57,508	0	5	27	32	25	11	2.1	0.6
MULTIPLE CHOICE																			
1.x.x - Number Prop Oper	31	1,494	Correct	Incorrect	Omit/Mult				0.80	0.01	664,194	Correct	Incorrect	Omit/Mult				0.67	0.13
2.x.x - Measurement	7	321	81	20	0				0.77	0.03	139,170	67	33	0				0.62	0.15
3.x.x - Geometry	14	626	77	23	0				0.88	0.02	278,460	62	38	0				0.77	0.11
4.x.x - Data Analysis & Probabilit	12	687	88	12	0				0.83	0.02	303,394	77	23	0				0.71	0.12
5.x.x - Algebraic Thinking	11	573	83	17	0				0.83	0.02	253,829	71	29	0				0.69	0.14



2008-2009
INTERIM PERFORMANCE REPORT
MATHEMATICS CORE CONTENT

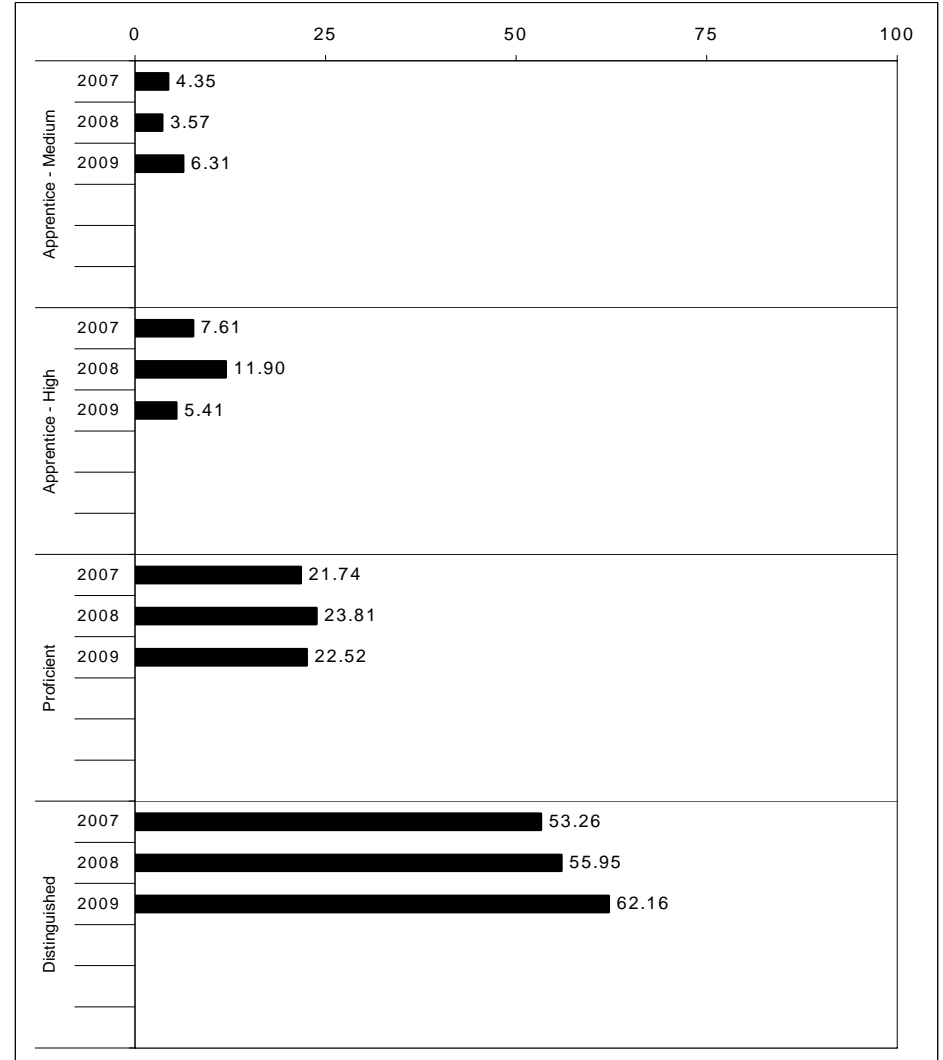
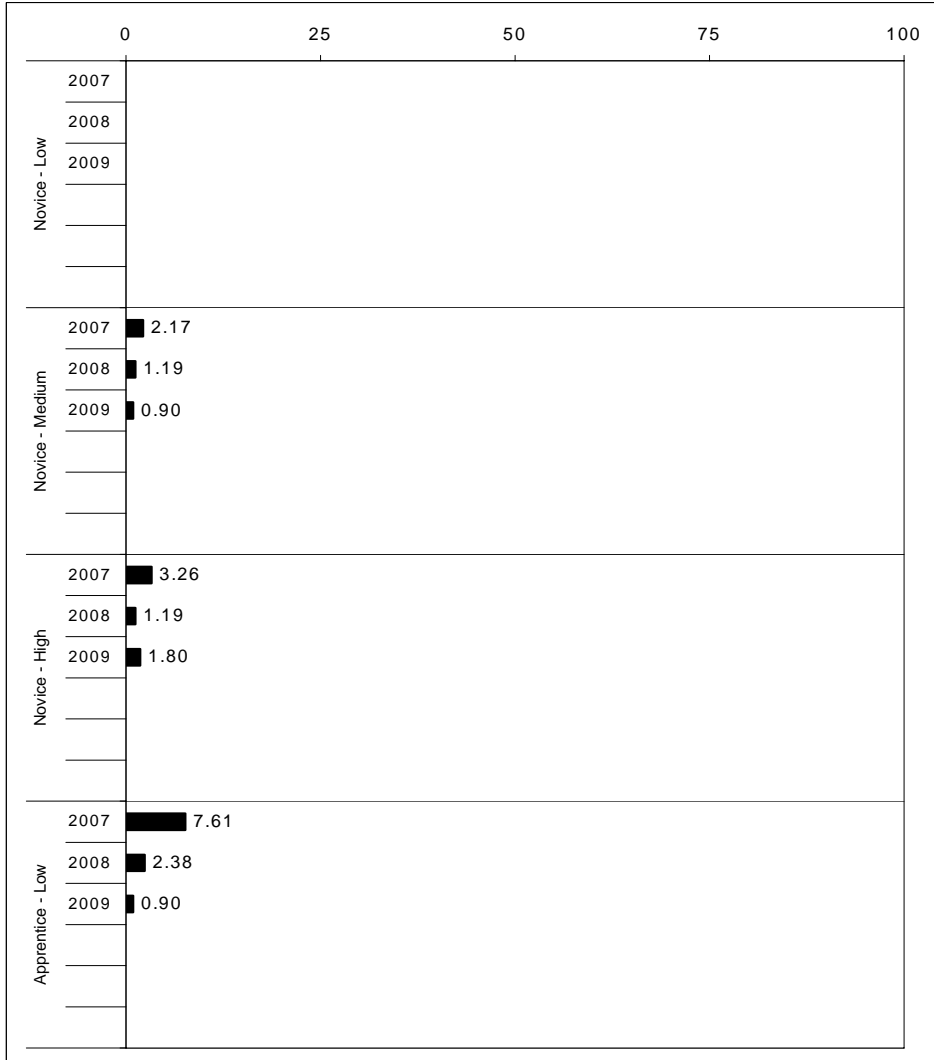
School: Meadowthorpe Elementary School
 District: Fayette County
 Code: 165160
 Grade: 05

	No. Items	No. Observations	SCHOOL								Mean	Std. Err.	No. Observations	STATE						Mean	School -State Mean
			B	0	1	2	3	4	Percents	B				0	1	2	3	4	Percents		
OPEN RESPONSE																					
1.x.x - Number Prop Oper	4	128	0	3	10	17	15	55	3.1	0.1	73,199	0	8	20	18	25	29	2.5	0.6		
2.x.x - Measurement	1	13	0	15	0	23	15	46	2.8	0.4	8,380	0	37	30	13	10	11	1.3	1.5		
3.x.x - Geometry	2	97	0	2	9	31	33	25	2.7	0.1	56,900	0	6	24	30	26	14	2.2	0.5		
4.x.x - Data Analysis & Probabilit	1	83	0	13	8	6	17	55	2.9	0.2	48,828	0	15	18	15	17	35	2.4	0.5		
5.x.x - Algebraic Thinking	1	11	0	9	0	18	0	73	3.3	0.4	8,005	0	13	15	20	17	35	2.5	0.8		
MULTIPLE CHOICE																					
1.x.x - Number Prop Oper	29	1,092	80	20	0				0.80	0.01	643,144	63	37	0				0.63	0.17		
2.x.x - Measurement	9	260	79	22	0				0.78	0.03	154,489	62	38	0				0.62	0.16		
3.x.x - Geometry	14	471	86	14	0				0.86	0.02	276,516	78	22	0				0.78	0.08		
4.x.x - Data Analysis & Probabilit	11	429	80	21	0				0.79	0.02	252,212	64	36	0				0.64	0.15		
5.x.x - Algebraic Thinking	10	415	84	16	0				0.84	0.02	244,140	65	35	0				0.65	0.19		



2008-2009
INTERIM PERFORMANCE REPORT
SCIENCE TREND DATA
Performance Level Percents

School: Meadowthorpe Elementary School
 District: Fayette County
 Code: 165160
 Grade: 04

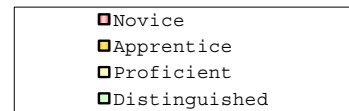
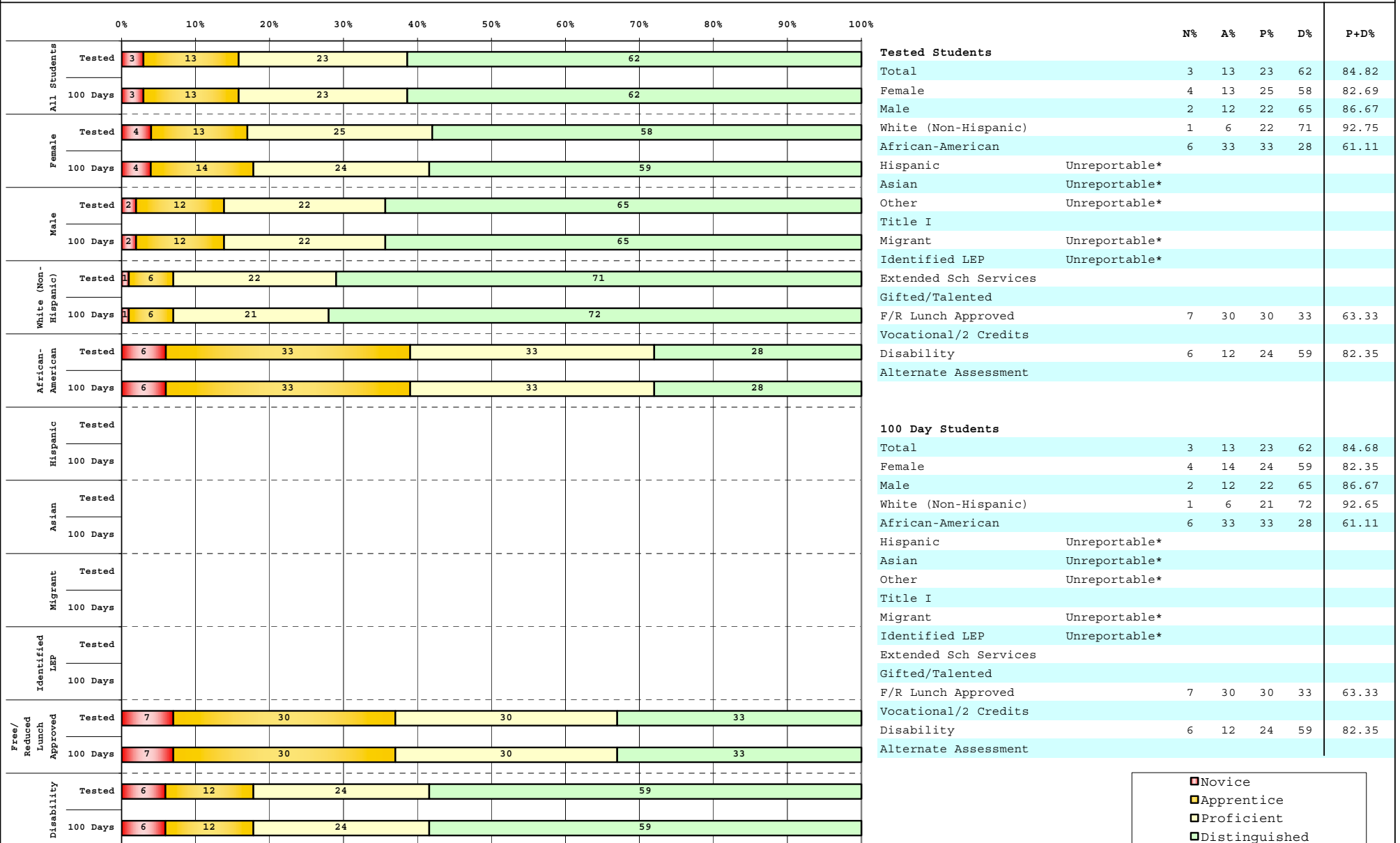


The horizontal bar represents the percent of students scoring at a performance level within a particular year. Percentages may not sum to 100% due to rounding.



2008-2009
INTERIM PERFORMANCE REPORT
SCIENCE DISAGGREGATION
Performance Level Percents

School: Meadowthorpe Elementary School
 District: Fayette County
 Code: 165160
 Grade: 04



Percentage may not sum to 100% due to rounding. 'Unreportable*' indicates subpopulations with fewer than 10 students or subpopulations where all students score at the same performance level.



2008-2009
INTERIM PERFORMANCE REPORT
SCIENCE CORE CONTENT

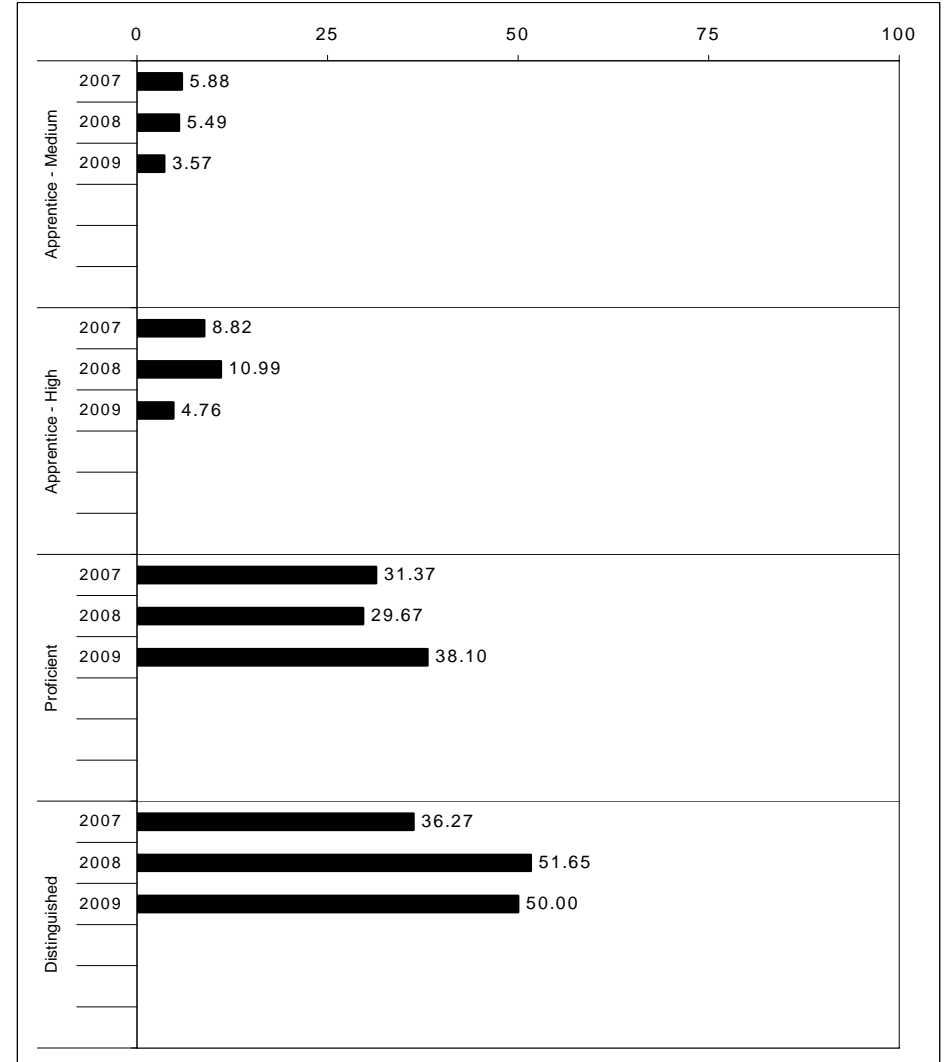
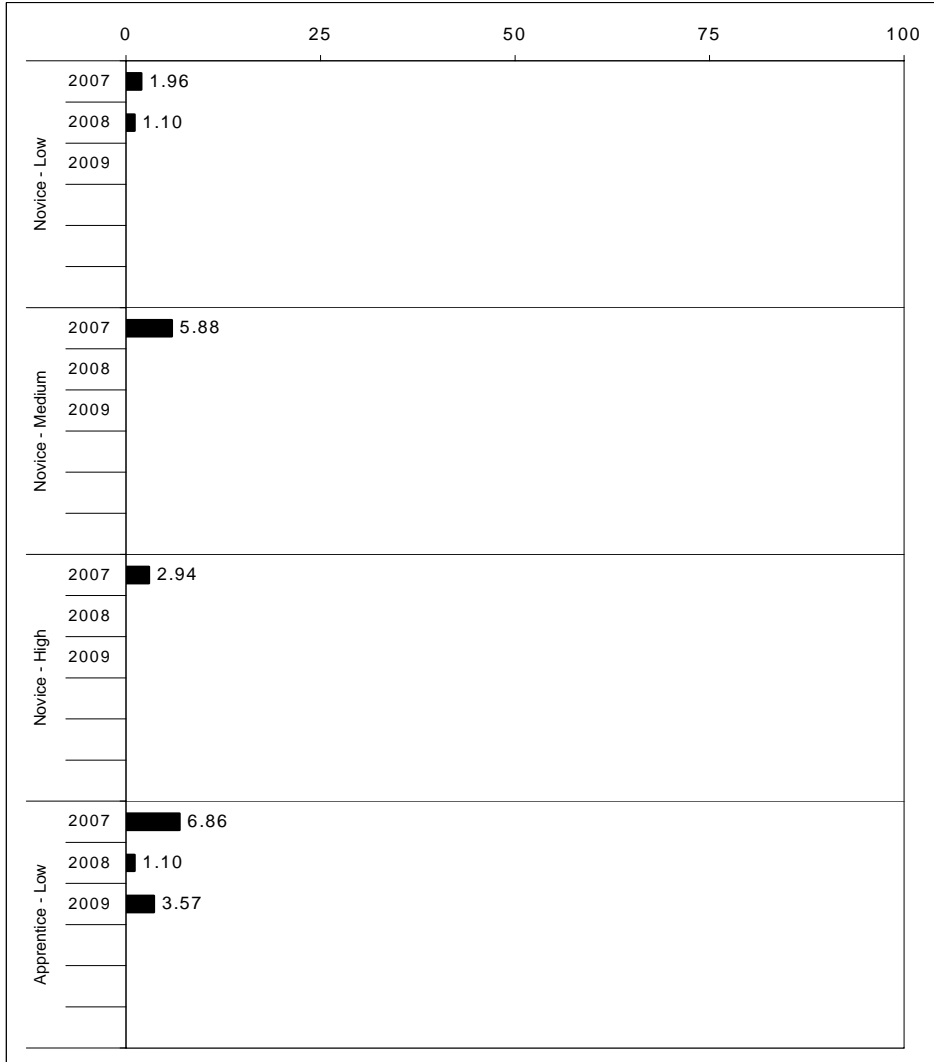
School: Meadowthorpe Elementary School
 District: Fayette County
 Code: 165160
 Grade: 04

	No. Items	No. Observations	SCHOOL								Std. Err.	No. Observations	STATE						School -State Mean
			B	0	1	2	3	4	Mean	B			0	1	2	3	4	Mean	
OPEN RESPONSE																			
1.x.x - Physical Science	2	37	0	3	5	46	27	19	2.5	0.2	16,337	0	17	19	42	17	5	1.7	0.8
2.x.x - Earth Space Science	3	147	0	7	19	35	30	10	2.2	0.1	65,658	0	12	22	35	26	4	1.9	0.3
3.x.x - Biological Science	3	149	0	1	8	20	49	21	2.8	0.1	65,506	0	2	11	33	44	9	2.5	0.3
4.x.x - Unifying Concepts	2	128	0	1	4	13	41	41	3.2	0.1	57,508	0	3	13	33	35	15	2.5	0.7
MULTIPLE CHOICE																			
1.x.x - Physical Science	18	888	Correct	Incorrect	Omit/Mult				0.87	0.01	393,336	Correct	Incorrect	Omit/Mult				0.81	0.06
2.x.x - Earth Space Science	19	909	87	13	0				0.78	0.02	401,488	82	18	0				0.71	0.07
3.x.x - Biological Science	22	1,052	78	22	0				0.84	0.01	467,138	71	29	0				0.78	0.06
4.x.x - Unifying Concepts	14	724	84	16	0				0.91	0.01	319,534	78	22	0				0.84	0.07
			91	9	0							84	15	0					



2008-2009
INTERIM PERFORMANCE REPORT
SOCIAL STUDIES TREND DATA
Performance Level Percents

School: Meadowthorpe Elementary School
 District: Fayette County
 Code: 165160
 Grade: 05

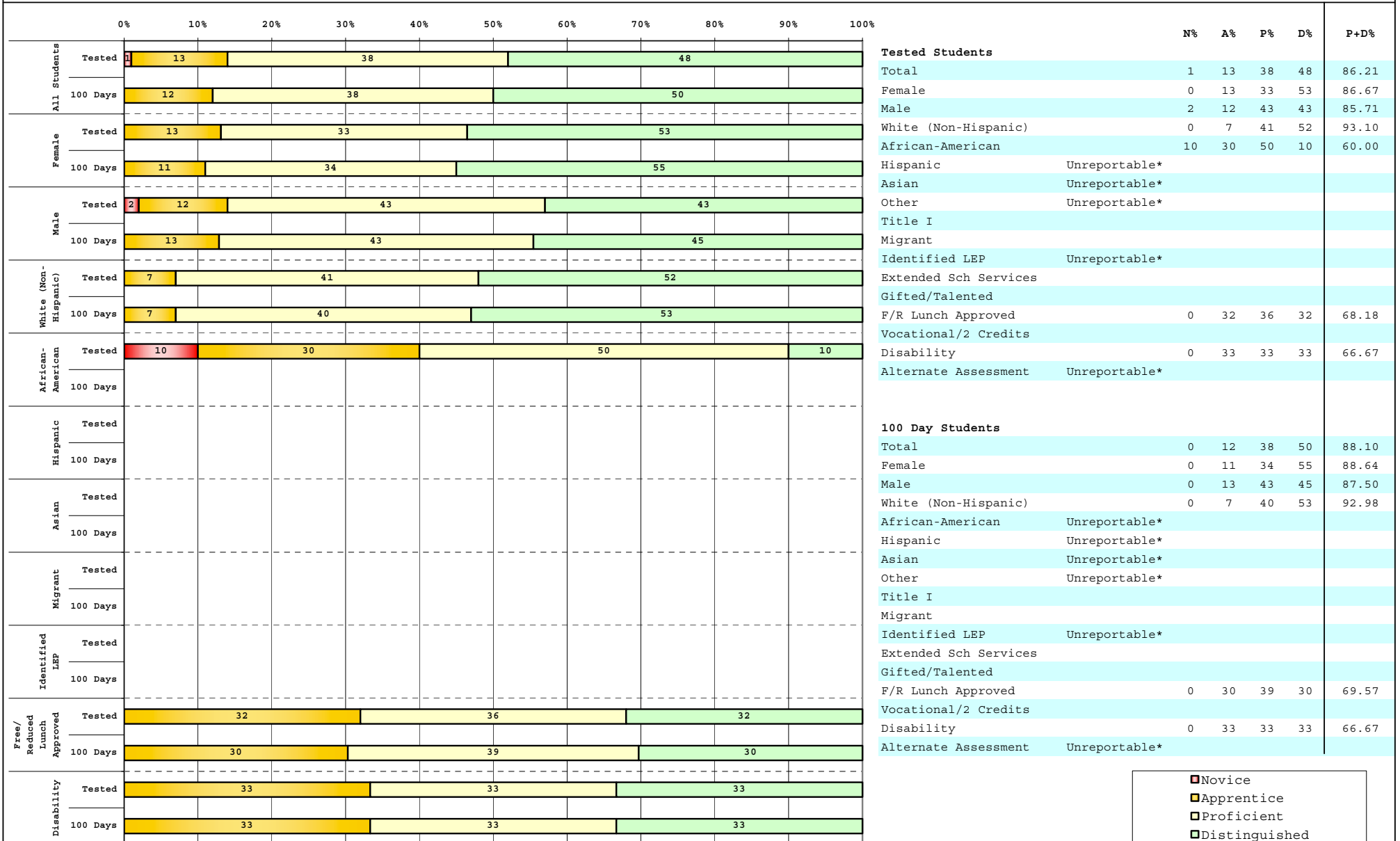


The horizontal bar represents the percent of students scoring at a performance level within a particular year. Percentages may not sum to 100% due to rounding.

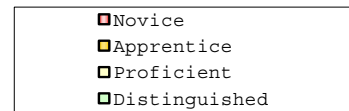


2008-2009
INTERIM PERFORMANCE REPORT
SOCIAL STUDIES DISAGGREGATION
Performance Level Percents

School: Meadowthorpe Elementary School
 District: Fayette County
 Code: 165160
 Grade: 05



Tested Students		N%	A%	P%	D%	P+D%
Total		1	13	38	48	86.21
Female		0	13	33	53	86.67
Male		2	12	43	43	85.71
White (Non-Hispanic)		0	7	41	52	93.10
African-American		10	30	50	10	60.00
Hispanic	Unreportable*					
Asian	Unreportable*					
Other	Unreportable*					
Title I						
Migrant						
Identified LEP	Unreportable*					
Extended Sch Services						
Gifted/Talented						
F/R Lunch Approved		0	32	36	32	68.18
Vocational/2 Credits						
Disability		0	33	33	33	66.67
Alternate Assessment	Unreportable*					
100 Day Students						
Total		0	12	38	50	88.10
Female		0	11	34	55	88.64
Male		0	13	43	45	87.50
White (Non-Hispanic)		0	7	40	53	92.98
African-American	Unreportable*					
Hispanic	Unreportable*					
Asian	Unreportable*					
Other	Unreportable*					
Title I						
Migrant						
Identified LEP	Unreportable*					
Extended Sch Services						
Gifted/Talented						
F/R Lunch Approved		0	30	39	30	69.57
Vocational/2 Credits						
Disability		0	33	33	33	66.67
Alternate Assessment	Unreportable*					



Percentage may not sum to 100% due to rounding. 'Unreportable*' indicates subpopulations with fewer than 10 students or subpopulations where all students score at the same performance level.



2008-2009
INTERIM PERFORMANCE REPORT
SOCIAL STUDIES CORE CONTENT

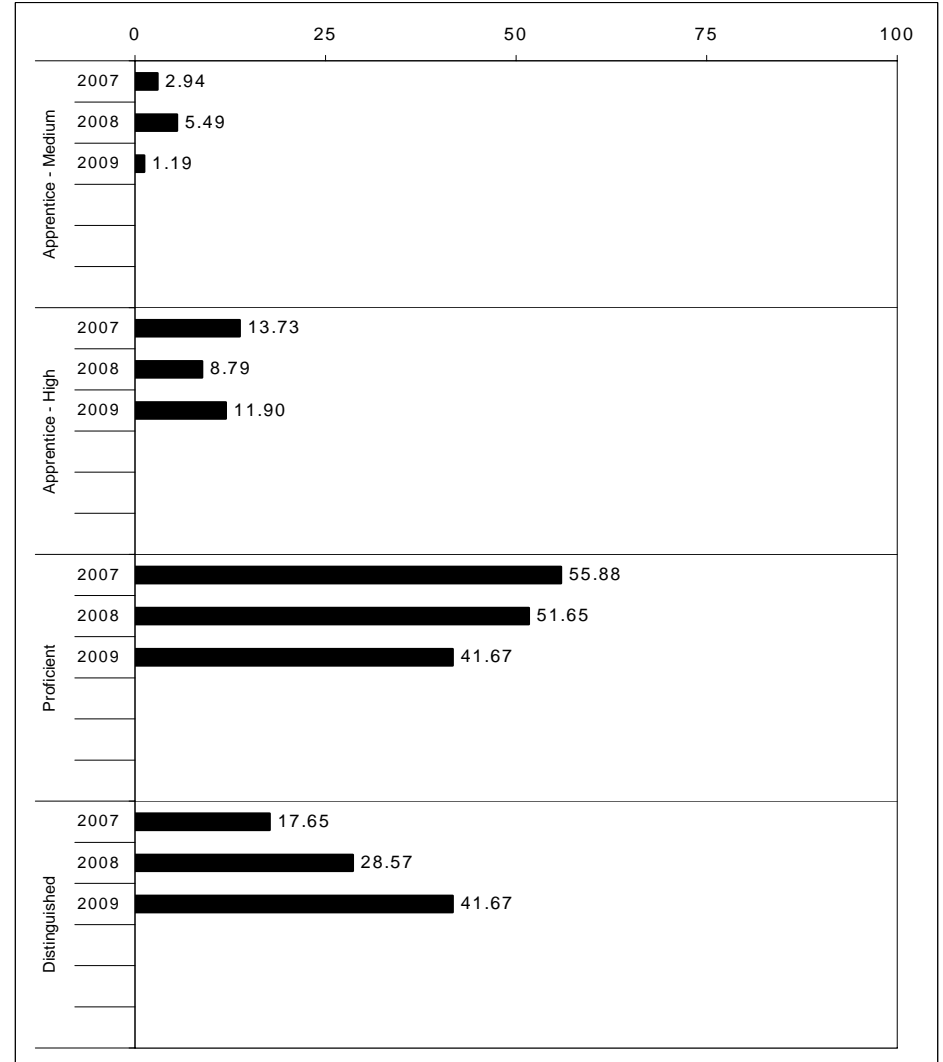
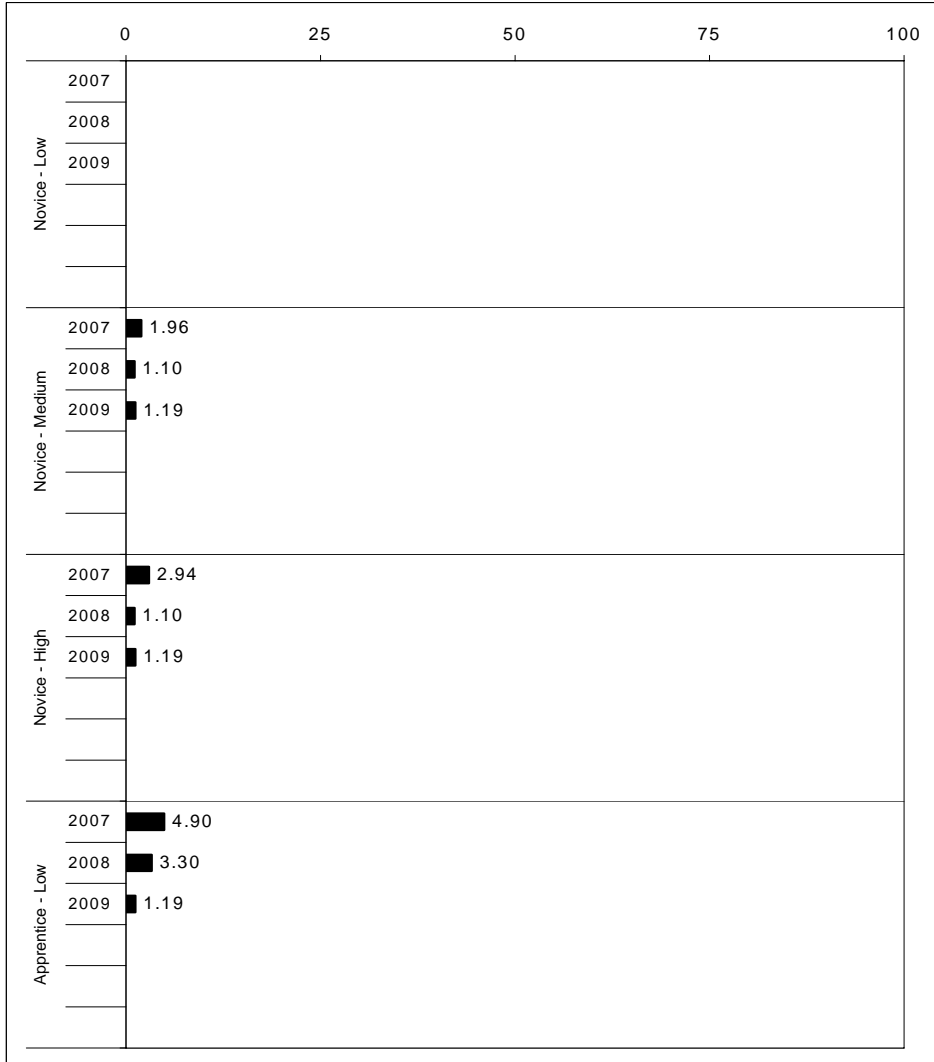
School: Meadowthorpe Elementary School
 District: Fayette County
 Code: 165160
 Grade: 05

	No. Items	No. Observations	SCHOOL								Std. Err.	No. Observations	STATE								School -State Mean
			B	0	1	2	3	4	Mean	B			0	1	2	3	4	Mean			
OPEN RESPONSE																					
1.x.x - Government & Civics	2	98	0	0	12	42	29	17	2.5	0.1	56,903	0	5	37	45	10	2	1.7	0.8		
2.x.x - Cultures & Societies	1	16	0	0	13	50	25	13	2.4	0.2	8,151	0	4	21	56	15	4	1.9	0.5		
3.x.x - Economics	1	83	0	2	11	48	18	20	2.4	0.1	48,828	0	11	33	41	12	3	1.6	0.8		
4.x.x - Geography	2	25	0	0	16	40	28	16	2.4	0.2	16,077	0	9	32	39	17	3	1.7	0.7		
5.x.x - Historical Perspective	3	110	0	2	18	54	17	9	2.1	0.1	65,353	0	7	35	46	10	2	1.7	0.4		
MULTIPLE CHOICE																					
1.x.x - Government & Civics	14	541	77	23	0				0.77	0.02	317,571	66	34	0				0.66	0.11		
2.x.x - Cultures & Societies	11	355	81	19	0				0.81	0.02	211,383	70	30	0				0.69	0.12		
3.x.x - Economics	11	430	83	17	0				0.83	0.02	252,215	73	27	0				0.73	0.10		
4.x.x - Geography	16	632	76	24	0				0.76	0.02	374,337	66	34	0				0.66	0.10		
5.x.x - Historical Perspective	27	999	79	21	0				0.79	0.01	586,076	69	31	0				0.69	0.10		



2008-2009
INTERIM PERFORMANCE REPORT
WRITING ON-DEMAND TREND DATA
Performance Level Percents

School: Meadowthorpe Elementary School
 District: Fayette County
 Code: 165160
 Grade: 05

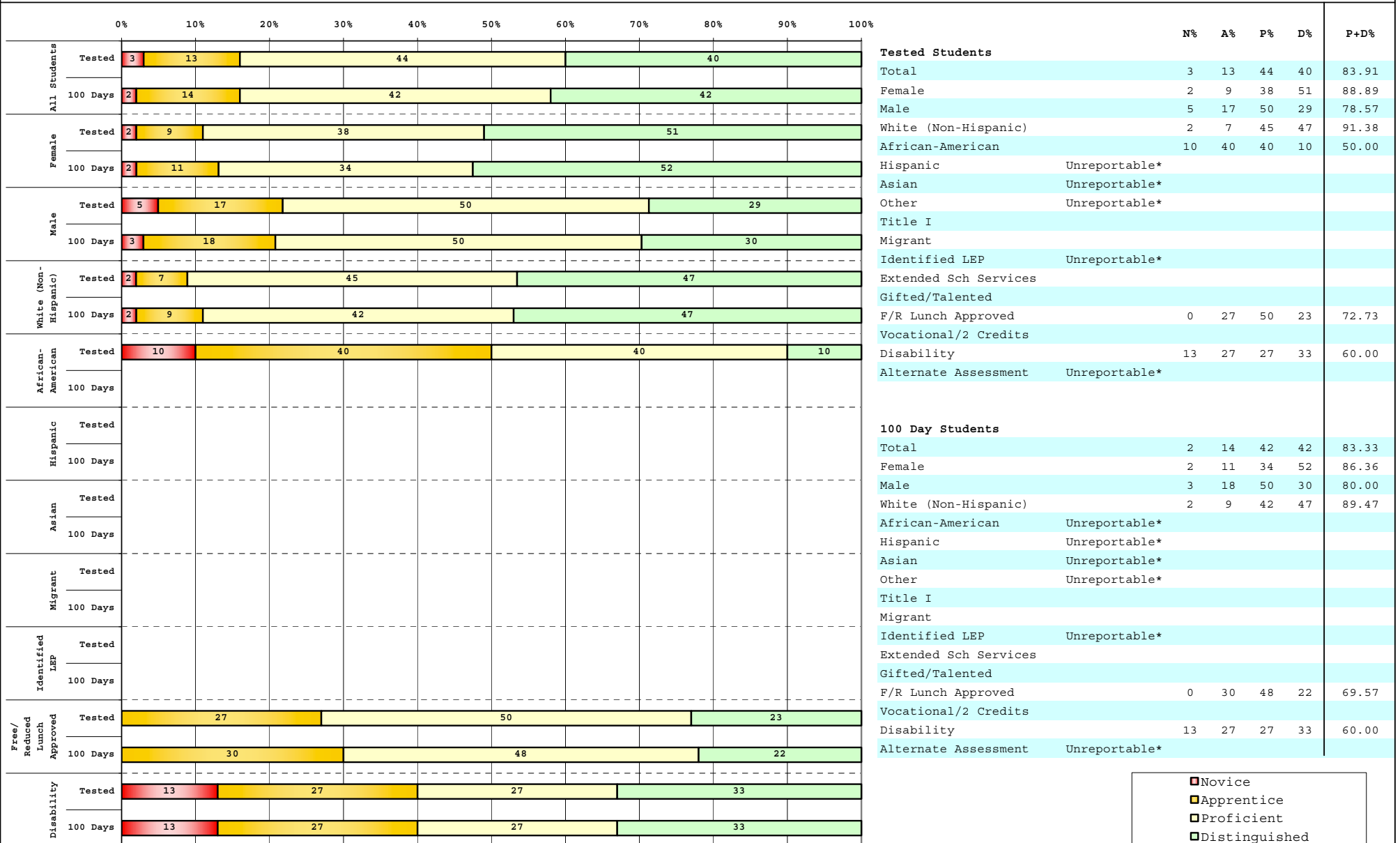


The horizontal bar represents the percent of students scoring at a performance level within a particular year. Percentages may not sum to 100% due to rounding.



2008-2009
INTERIM PERFORMANCE REPORT
WRITING ON-DEMAND DISAGGREGATION
Performance Level Percents

School: Meadowthorpe Elementary School
 District: Fayette County
 Code: 165160
 Grade: 05



■	Novice
■	Apprentice
■	Proficient
■	Distinguished

Percentage may not sum to 100% due to rounding. 'Unreportable*' indicates subpopulations with fewer than 10 students or subpopulations where all students score at the same performance level.



2008-2009
INTERIM PERFORMANCE REPORT
WRITING ON-DEMAND CORE CONTENT

School: Meadowthorpe Elementary School
 District: Fayette County
 Code: 165160
 Grade: 05

WRITING PROMPT	SCHOOL												STATE												School
	No. Observations	Percents											Mean	Percents											Mean
	B	0	1	2	3	4	5	6	7	8		B	0	1	2	3	4	5	6	7	8				
Inform																									
1.X.X - Content	29	0	0	0	0	3	17	21	38	14	7	5.62	0	1	1	9	9	34	18	21	4	2	4.43	1.19	
2.X.X - Structure	29	0	0	0	0	3	24	21	31	14	7	5.48	0	1	2	9	10	35	19	19	3	1	4.33	1.15	
3.X.X - Convention	29	0	0	0	0	3	17	21	38	10	10	5.66	0	0	0	12	11	34	19	19	3	1	4.38	1.28	
Narrate for a purpose																									
1.X.X - Content	24	0	0	0	4	0	17	21	42	13	4	5.50	0	1	1	10	9	36	18	21	3	1	4.35	1.15	
2.X.X - Structure	24	0	0	0	0	0	21	17	46	13	4	5.63	0	1	2	10	10	37	17	19	3	1	4.27	1.36	
3.X.X - Convention	24	0	0	0	0	0	21	17	46	13	4	5.63	0	0	0	12	10	36	18	19	3	1	4.33	1.30	
Persuade																									
1.X.X - Content	30	0	3	0	3	0	23	10	37	7	17	5.50	0	1	1	8	8	33	19	21	5	3	4.50	1.00	
2.X.X - Structure	30	0	3	0	10	0	13	10	40	7	17	5.43	0	2	2	9	10	33	19	20	5	2	4.42	1.01	
3.X.X - Convention	30	0	0	0	17	0	10	10	40	7	17	5.43	0	0	0	11	10	32	19	20	5	2	4.50	0.93	

MULTIPLE CHOICE	No. Items	SCHOOL							STATE							School
		No. Observations	Percents			Mean	Std. Err.	No. Observations	Percents			Mean	-State Mean			
			Correct	Incorrect	Omit/Mult				Correct	Incorrect	Omit/Mult					
4.x.x - Writing Process	52	996	85	15	0	0.85	0.01	585,936	73	27	0	0.73	0.12			
4.10.x - Revising	16	221	81	20	0	0.81	0.03	130,317	66	34	0	0.66	0.15			
4.11.x - Editing	36	775	87	13	0	0.87	0.02	455,619	75	24	0	0.75	0.12			