



Interim Performance Report

In March 2009, the Kentucky General Assembly passed Senate Bill 1 (SB1) that was subsequently signed into law by the Governor. SB1 calls for a significant overhaul of the state's assessment and accountability system. The new assessment system begins in the spring of 2012. The school years of 2008-2009, 2009-2010 and 2010-2011 are described in SB1 as an interim period. This three-year period allows Kentucky to develop the new assessment system and to carry on state and federal testing requirements.

The Interim Performance Report includes the Kentucky Core Content Test (KCCT) in Reading (grades 3-8 and 10), Mathematics (grades 3-8 and 11), Science (grades 4, 7 and 11), Social Studies (grades 5, 8 and 11) and Writing On-Demand (grades 5, 8 and 12). The KCCT is based on the Kentucky Core Content for Assessment (Version 4.1) and contains multiple choice and open response questions. The Writing On-Demand test uses writing prompts that require students to craft a piece of writing in a 60 minute period.

The KCCT is developed under the direction of content advisory committees of Kentucky educators who draft, review and select test questions. All test items are reviewed by a bias review committee to enhance the fairness of items for all Kentucky students.

The KCCT continues to fulfill the requirements of the federal statute known as the No Child Left Behind Act of 2001. A separate accountability report for No Child Left Behind (NCLB) is published by the Kentucky Department of Education.

The Interim Performance Report focuses entirely on the five state-required content areas and provides data for schools or districts. The data in this report is not used directly for state accountability; although, these results can fulfill the requirements of Senate Bill 168 from 2002 and may be used by schools or districts for their own local accountability needs.

Performance standards are based on descriptions of Novice, Apprentice, Proficient and Distinguished (NAPD) student performance levels specific to the content area and grade being assessed. The performance standards, in conjunction with Kentucky's Core Content for Assessment, should allow instruction to better focus on the content area to be taught and on how well students must demonstrate achievement in each content area.

Reporting Changes for 2009

Based on SB1, Kentucky will not be reporting state accountability and academic indices as in the past. The report does have several familiar pages with performance level (NAPD) trend, core content and disaggregation data per content area. Districts and schools will still see distributions of how students scored in the Novice (with sublevels), Apprentice (with sublevels), Proficient and Distinguished performance levels.

Confidentiality Changes

Due to federal regulations around the Family Education Rights and Privacy Act (FERPA), the numbers of students have been removed. Though there is a need to report as much data as possible, there is also a paramount need to maintain the confidential aspects of individual scores. When scores are reported in what is commonly called "small cells" where very few students may be categorized, there is the possibility of revealing individual scores when numbers are reported. Numbers are reported to each district in a confidential report that accompanies the public Interim Performance Report.

**2008-2009
INTERIM PERFORMANCE REPORT**

School: Maxwell Spanish Immersion Elem School
District: Fayette County
Code: 165074
Grade: PRIMARY-05

CONTENTS OF THIS REPORT

Introduction	1
Academic Trend Data	
Reading Results	2-8
Mathematics Results	9-15
Science Results	16-18
Social Studies Results	19-21
Writing Results	22-24

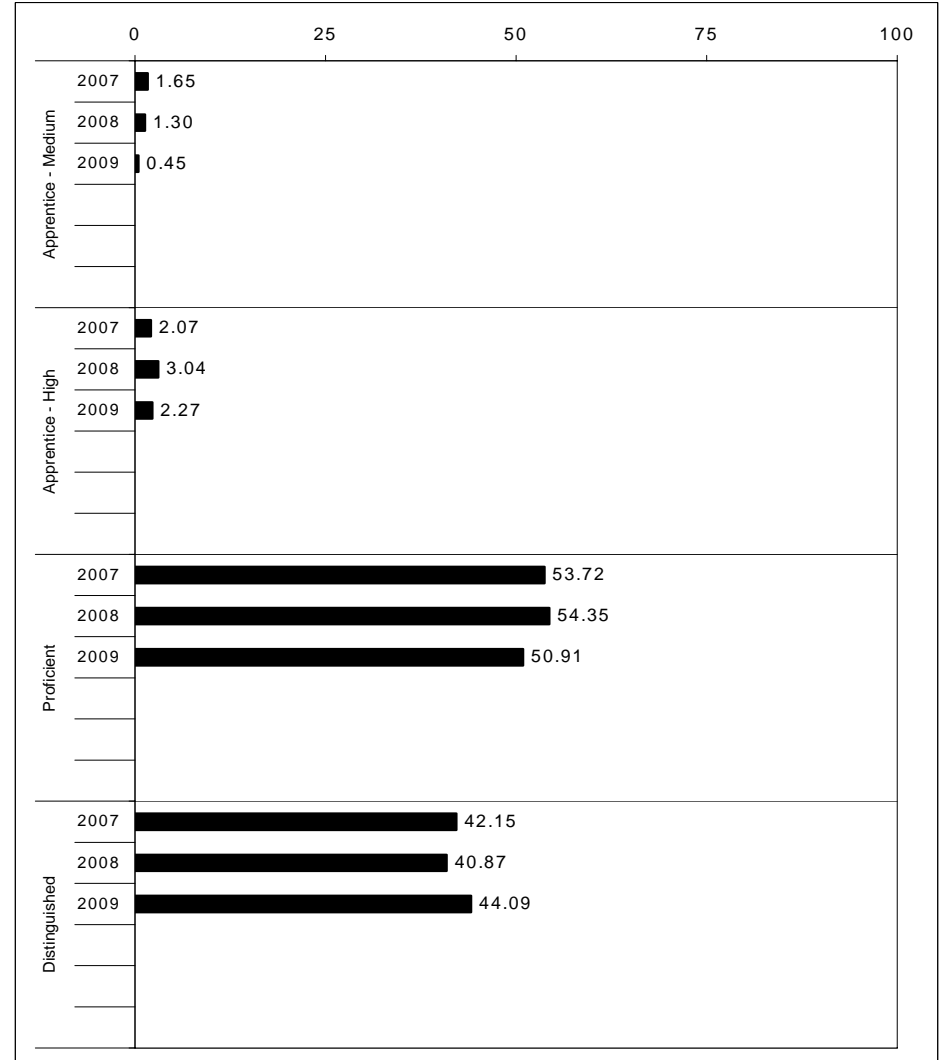
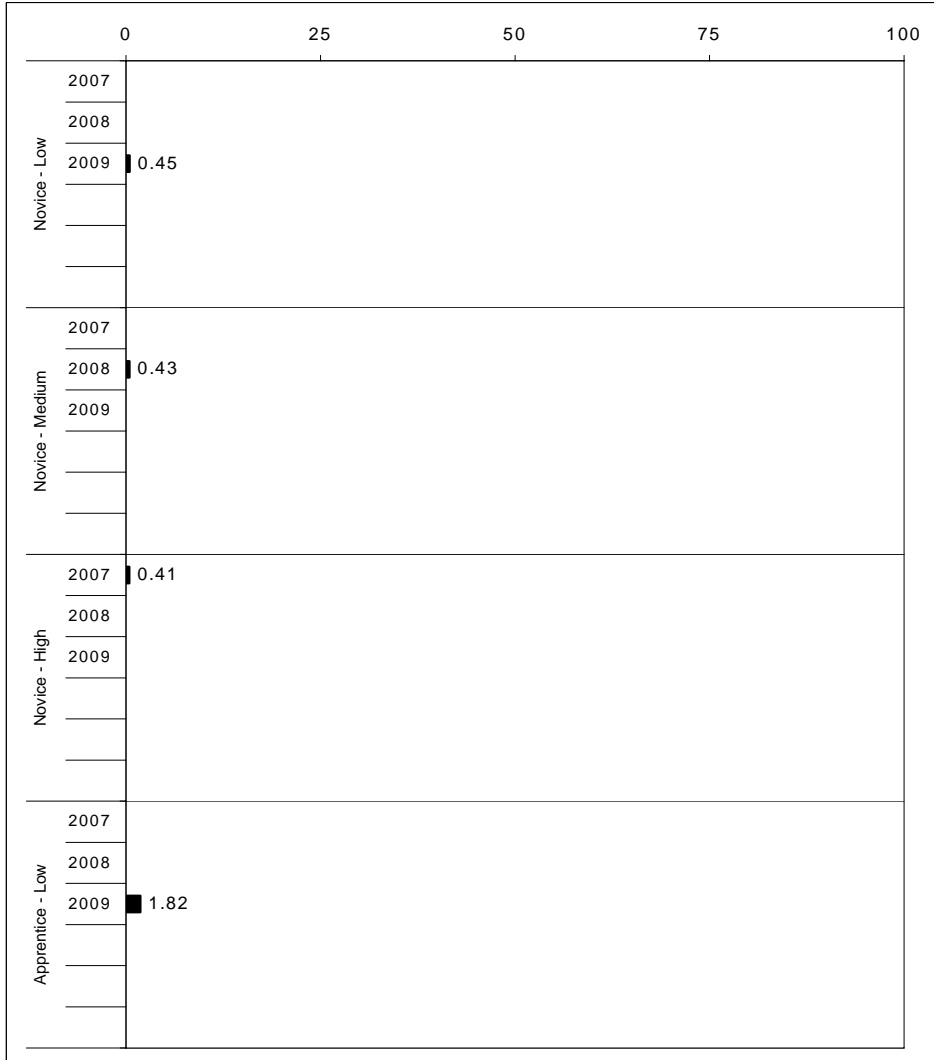
For more information, refer to the 2009 Interim Assessment Interpretative Guide on the Kentucky Department of Education Web site (www.education.ky.gov).





2008-2009
INTERIM PERFORMANCE REPORT
READING TREND DATA
Performance Level Percents

School: Maxwell Spanish Immersion Elem School
 District: Fayette County
 Code: 165074
 Grade: ELEMENTARY



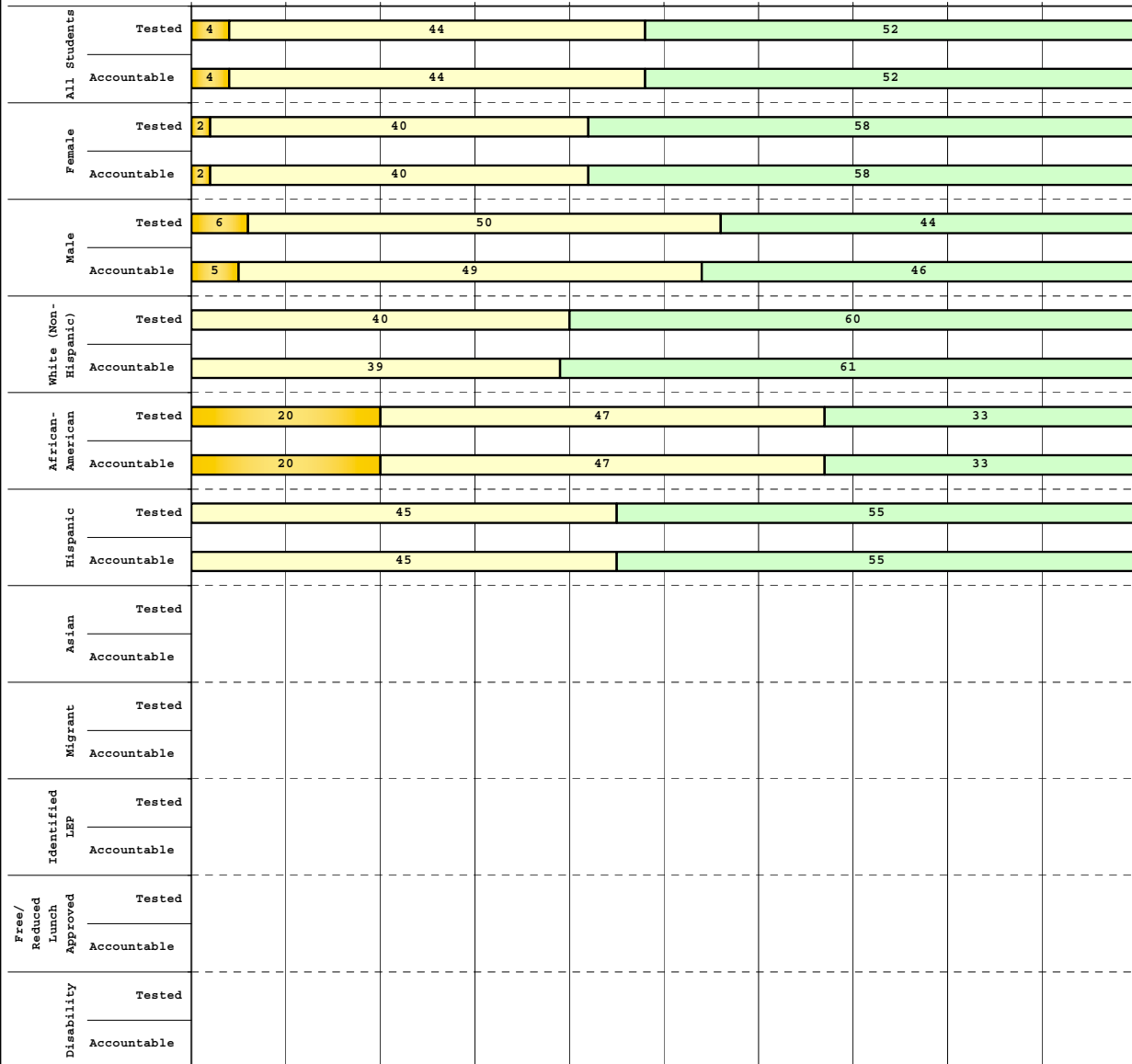
The horizontal bar represents the percent of students scoring at a performance level within a particular year. Percentages may not sum to 100% due to rounding.



2008-2009
INTERIM PERFORMANCE REPORT
READING DISAGGREGATION
Performance Level Percents

School: Maxwell Spanish Immersion Elem School
 District: Fayette County
 Code: 165074
 Grade: 03

0% 10% 20% 30% 40% 50% 60% 70% 80% 90% 100%



Tested Students

	N%	A%	P%	D%	P+D%
Total	0	4	44	52	96.30
Female	0	2	40	58	97.78
Male	0	6	50	44	94.44
White (Non-Hispanic)	0	0	40	60	100.00
African-American	0	20	47	33	80.00
Hispanic	0	0	45	55	100.00
Asian	Unreportable*				
Other	Unreportable*				
Title I					
Migrant					
Identified LEP	Unreportable*				
Extended Sch Services	0	11	56	33	88.89
Gifted/Talented	0	0	35	65	100.00
F/R Lunch Approved	Unreportable*				
Vocational/2 Credits					
Disability	Unreportable*				
Alternate Assessment					

NCLB Accountable Students

	N%	A%	P%	D%	P+D%
Total	0	4	44	52	96.34
Female	0	2	40	58	97.78
Male	0	5	49	46	94.59
White (Non-Hispanic)	0	0	39	61	100.00
African-American	0	20	47	33	80.00
Hispanic	0	0	45	55	100.00
Asian	Unreportable*				
Other	Unreportable*				
Title I					
Migrant					
Identified LEP	Unreportable*				
Extended Sch Services	0	11	56	33	88.89
Gifted/Talented	0	0	35	65	100.00
F/R Lunch Approved	Unreportable*				
Vocational/2 Credits					
Disability	Unreportable*				
Alternate Assessment					

 Novice
 Apprentice
 Proficient
 Distinguished

Percentage may not sum to 100% due to rounding. 'Unreportable*' indicates subpopulations with fewer than 10 students or subpopulations where all students score at the same performance level.



**2008-2009
INTERIM PERFORMANCE REPORT
READING DISAGGREGATION
Performance Level Percents**

School: Maxwell Spanish Immersion Elem School
 District: Fayette County
 Code: 165074
 Grade: 04

		0%	10%	20%	30%	40%	50%	60%	70%	80%	90%	100%	N%	A%	P%	D%	P+D%	
All Students	Tested	1	7	53						39								
	Accountable	1	7	53						39								
Female	Tested	3	51					46										
	Accountable	3	51					46										
Male	Tested	3	11	56					31									
	Accountable	3	11	56					31									
White (Non-Hispanic)	Tested	2	4	43					50									
	Accountable	2	4	43					50									
African-American	Tested	21		71						7								
	Accountable	21		71						7								
Hispanic	Tested																	
	Accountable																	
Asian	Tested																	
	Accountable																	
Migrant	Tested																	
	Accountable																	
Identified LEP	Tested																	
	Accountable																	
Free/Reduced Lunch Approved	Tested	15		77						8								
	Accountable	15		77						8								
Disability	Tested																	
	Accountable																	

Tested Students		N%	A%	P%	D%	P+D%
Total		1	7	53	39	92.00
Female		0	3	51	46	97.44
Male		3	11	56	31	86.11
White (Non-Hispanic)		2	4	43	50	93.48
African-American		0	21	71	7	78.57
Hispanic	Unreportable*					
Asian	Unreportable*					
Other	Unreportable*					
Title I						
Migrant						
Identified LEP	Unreportable*					
Extended Sch Services		6	18	59	18	76.47
Gifted/Talented		0	0	37	63	100.00
F/R Lunch Approved		0	15	77	8	84.62
Vocational/2 Credits						
Disability	Unreportable*					
Alternate Assessment						

NCLB Accountable Students		N%	A%	P%	D%	P+D%
Total		1	7	53	39	92.00
Female		0	3	51	46	97.44
Male		3	11	56	31	86.11
White (Non-Hispanic)		2	4	43	50	93.48
African-American		0	21	71	7	78.57
Hispanic	Unreportable*					
Asian	Unreportable*					
Other	Unreportable*					
Title I						
Migrant						
Identified LEP	Unreportable*					
Extended Sch Services		6	18	59	18	76.47
Gifted/Talented		0	0	37	63	100.00
F/R Lunch Approved		0	15	77	8	84.62
Vocational/2 Credits						
Disability	Unreportable*					
Alternate Assessment						

■ Novice
■ Apprentice
■ Proficient
■ Distinguished

Percentage may not sum to 100% due to rounding. 'Unreportable*' indicates subpopulations with fewer than 10 students or subpopulations where all students score at the same performance level.



**2008-2009
INTERIM PERFORMANCE REPORT
READING DISAGGREGATION
Performance Level Percents**

School: Maxwell Spanish Immersion Elem School
 District: Fayette County
 Code: 165074
 Grade: 05

		0%	10%	20%	30%	40%	50%	60%	70%	80%	90%	100%	N%	A%	P%	D%	P+D%
All Students	Tested	3	57						40								
	Accountable	3	57						40								
Female	Tested	3	48				48										
	Accountable	3	48				48										
Male	Tested	3	66					31									
	Accountable	3	66					31									
White (Non-Hispanic)	Tested	49			51												
	Accountable	49			51												
African-American	Tested	11	78					11									
	Accountable	11	78					11									
Hispanic	Tested																
	Accountable																
Asian	Tested																
	Accountable																
Migrant	Tested																
	Accountable																
Identified LEP	Tested																
	Accountable																
Free/Reduced Lunch Approved	Tested	7	73						20								
	Accountable	7	73						20								
Disability	Tested																
	Accountable																

		N%	A%	P%	D%	P+D%
Tested Students						
Total		0	3	57	40	96.83
Female		0	3	48	48	96.77
Male		0	3	66	31	96.88
White (Non-Hispanic)		0	0	49	51	100.00
African-American		0	11	78	11	88.89
Hispanic	Unreportable*					
Asian	Unreportable*					
Other	Unreportable*					
Title I						
Migrant						
Identified LEP						
Extended Sch Services		0	12	76	12	88.24
Gifted/Talented		0	0	44	56	100.00
F/R Lunch Approved		0	7	73	20	93.33
Vocational/2 Credits						
Disability	Unreportable*					
Alternate Assessment						
NCLB Accountable Students						
Total		0	3	57	40	96.83
Female		0	3	48	48	96.77
Male		0	3	66	31	96.88
White (Non-Hispanic)		0	0	49	51	100.00
African-American		0	11	78	11	88.89
Hispanic	Unreportable*					
Asian	Unreportable*					
Other	Unreportable*					
Title I						
Migrant						
Identified LEP						
Extended Sch Services		0	12	76	12	88.24
Gifted/Talented		0	0	44	56	100.00
F/R Lunch Approved		0	7	73	20	93.33
Vocational/2 Credits						
Disability	Unreportable*					
Alternate Assessment						

■ Novice
■ Apprentice
■ Proficient
■ Distinguished

Percentage may not sum to 100% due to rounding. 'Unreportable*' indicates subpopulations with fewer than 10 students or subpopulations where all students score at the same performance level.



2008-2009
INTERIM PERFORMANCE REPORT
READING CORE CONTENT

School: Maxwell Spanish Immersion Elem School
 District: Fayette County
 Code: 165074
 Grade: 03

	No. Items	No. Observations	SCHOOL								Mean	Std. Err.	No. Observations	STATE						Mean	School - State Mean
			B	0	1	2	3	4	B	0				1	2	3	4				
OPEN RESPONSE																					
2.0.x - Developing Understanding	2	164	0	2	15	48	24	10	2.3	0.1	100,212	0	10	30	44	14	2	1.7	0.6		
3.0.x - Interpreting Text	2	164	0	2	15	48	24	10	2.3	0.1	100,212	0	10	30	44	14	2	1.7	0.6		
MULTIPLE CHOICE																					
1.0.x - Forming a Foundation	32	641	94	6	0				0.94	0.01	392,589	83	17	0				0.83	0.11		
2.0.x - Developing Understanding	89	1,624	91	9	0				0.91	0.01	993,477	80	20	0				0.80	0.11		
3.0.x - Interpreting Text	31	771	92	8	0				0.92	0.02	468,115	77	23	0				0.77	0.15		
5.0.x - Critical Stance	15	342	91	9	0				0.91	0.02	208,359	79	21	0				0.79	0.12		



**2008-2009
INTERIM PERFORMANCE REPORT
READING CORE CONTENT**

School: Maxwell Spanish Immersion Elem School
 District: Fayette County
 Code: 165074
 Grade: 04

	No. Items	No. Observations	SCHOOL							Mean	Std. Err.	No. Observations	STATE							Mean	School -State Mean
			B	0	1	2	3	4	B				0	1	2	3	4				
OPEN RESPONSE																					
2.0.x - Developing Understanding	5	123	0	0	9	54	33	4	2.3	0.1	81,849	0	3	24	52	18	3	1.9	0.4		
3.0.x - Interpreting Text	6	197	0	1	9	42	39	10	2.5	0.1	131,199	0	4	22	45	23	5	2.0	0.5		
MULTIPLE CHOICE																					
1.0.x - Forming a Foundation	34	606	83	17	0				0.83	0.02	401,452	72	28	0				0.71	0.12		
2.0.x - Developing Understanding	76	1,309	82	18	0				0.82	0.01	868,422	73	27	0				0.73	0.09		
3.0.x - Interpreting Text	29	416	87	13	0				0.87	0.02	278,648	79	21	0				0.79	0.08		
5.0.x - Critical Stance	9	233	83	17	0				0.83	0.03	155,704	74	26	0				0.74	0.09		



2008-2009
INTERIM PERFORMANCE REPORT
READING CORE CONTENT

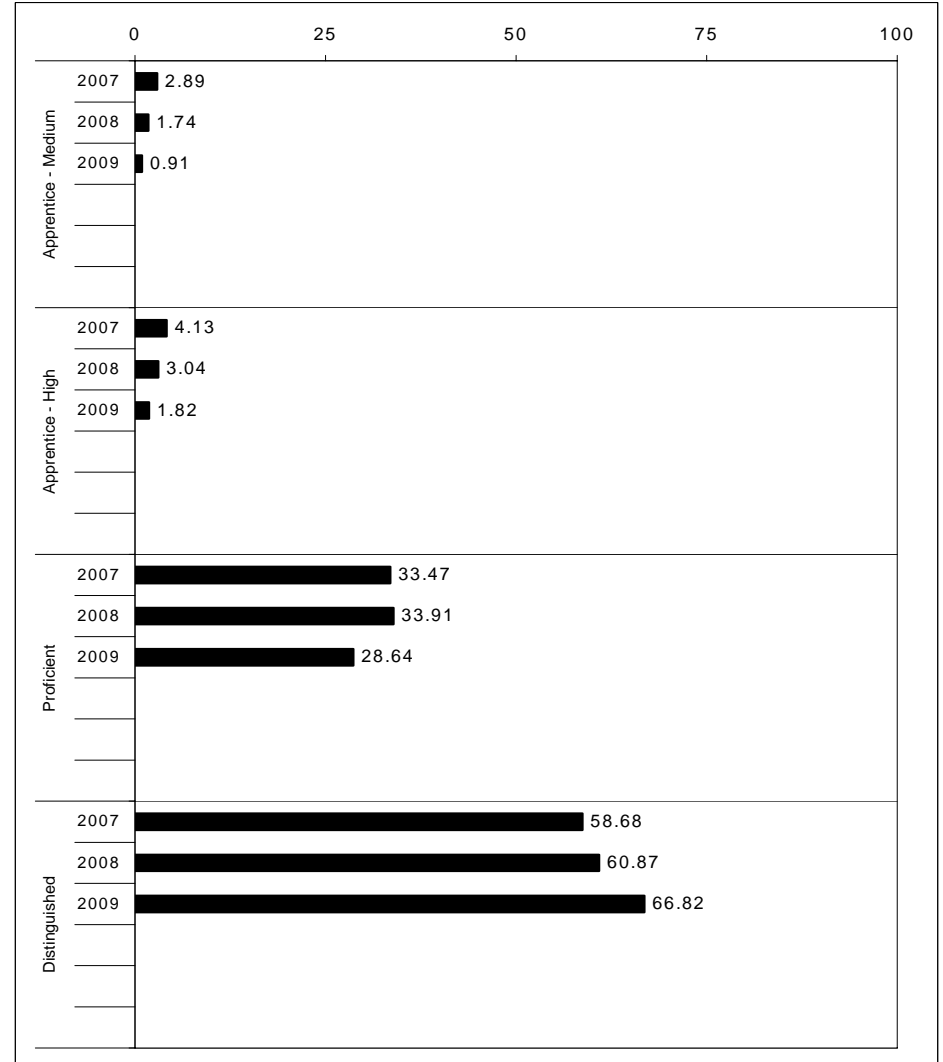
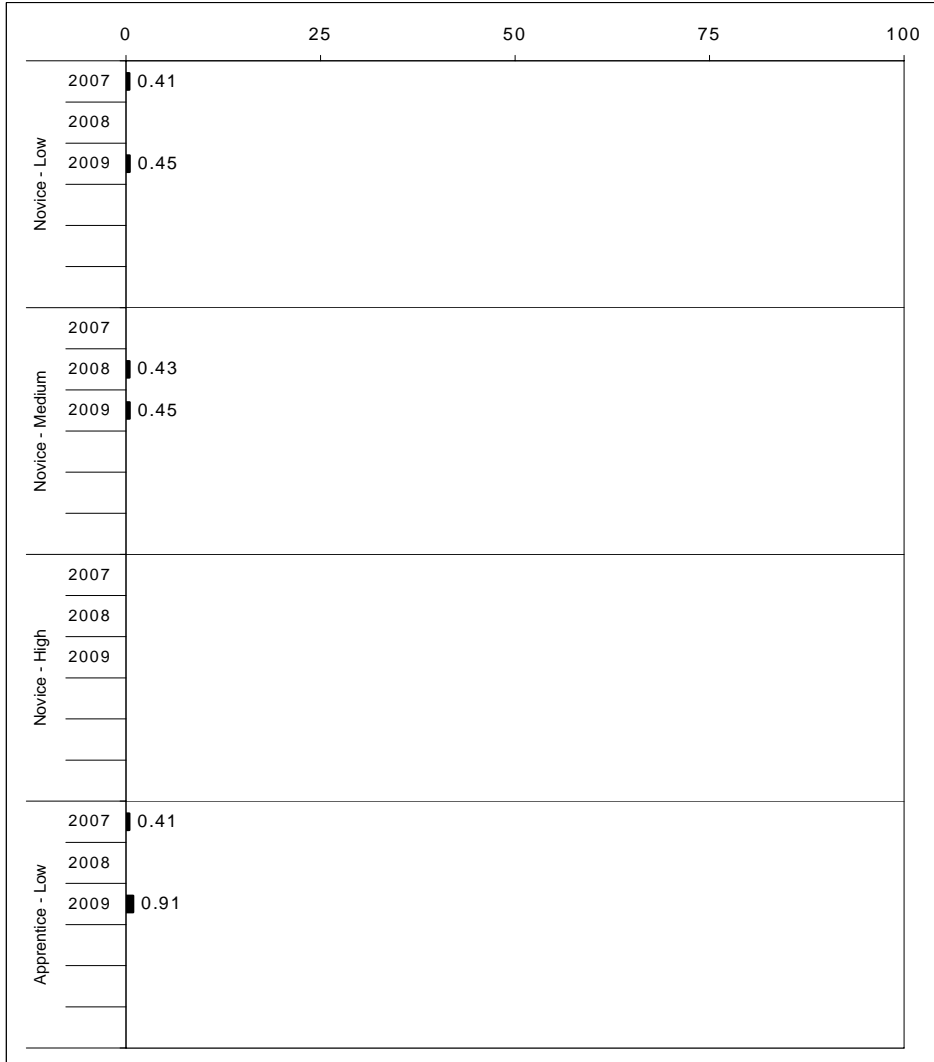
School: Maxwell Spanish Immersion Elem School
 District: Fayette County
 Code: 165074
 Grade: 05

	No. Items	No. Observations	SCHOOL								Std. Err.	No. Observations	STATE								School -State Mean
			B	0	1	2	3	4	Mean	B			0	1	2	3	4	Mean			
OPEN RESPONSE																					
2.0.x - Developing Understanding	6	115	0	2	8	49	33	9	2.4	0.1	89,507	0	5	23	48	20	5	2.0	0.4		
3.0.x - Interpreting Text	6	169	0	1	6	57	29	7	2.3	0.1	130,403	0	5	21	50	19	4	2.0	0.3		
MULTIPLE CHOICE																					
1.0.x - Forming a Foundation	28	347	89	12	0				0.88	0.02	268,187	74	26	0				0.74	0.14		
2.0.x - Developing Understanding	71	1,064	88	12	0				0.88	0.01	823,068	80	20	0				0.80	0.08		
3.0.x - Interpreting Text	27	439	90	10	0				0.90	0.02	341,653	81	19	0				0.81	0.09		
5.0.x - Critical Stance	17	387	88	12	0				0.88	0.02	300,671	75	25	0				0.75	0.13		



2008-2009
INTERIM PERFORMANCE REPORT
MATHEMATICS TREND DATA
Performance Level Percents

School: Maxwell Spanish Immersion Elem School
 District: Fayette County
 Code: 165074
 Grade: ELEMENTARY



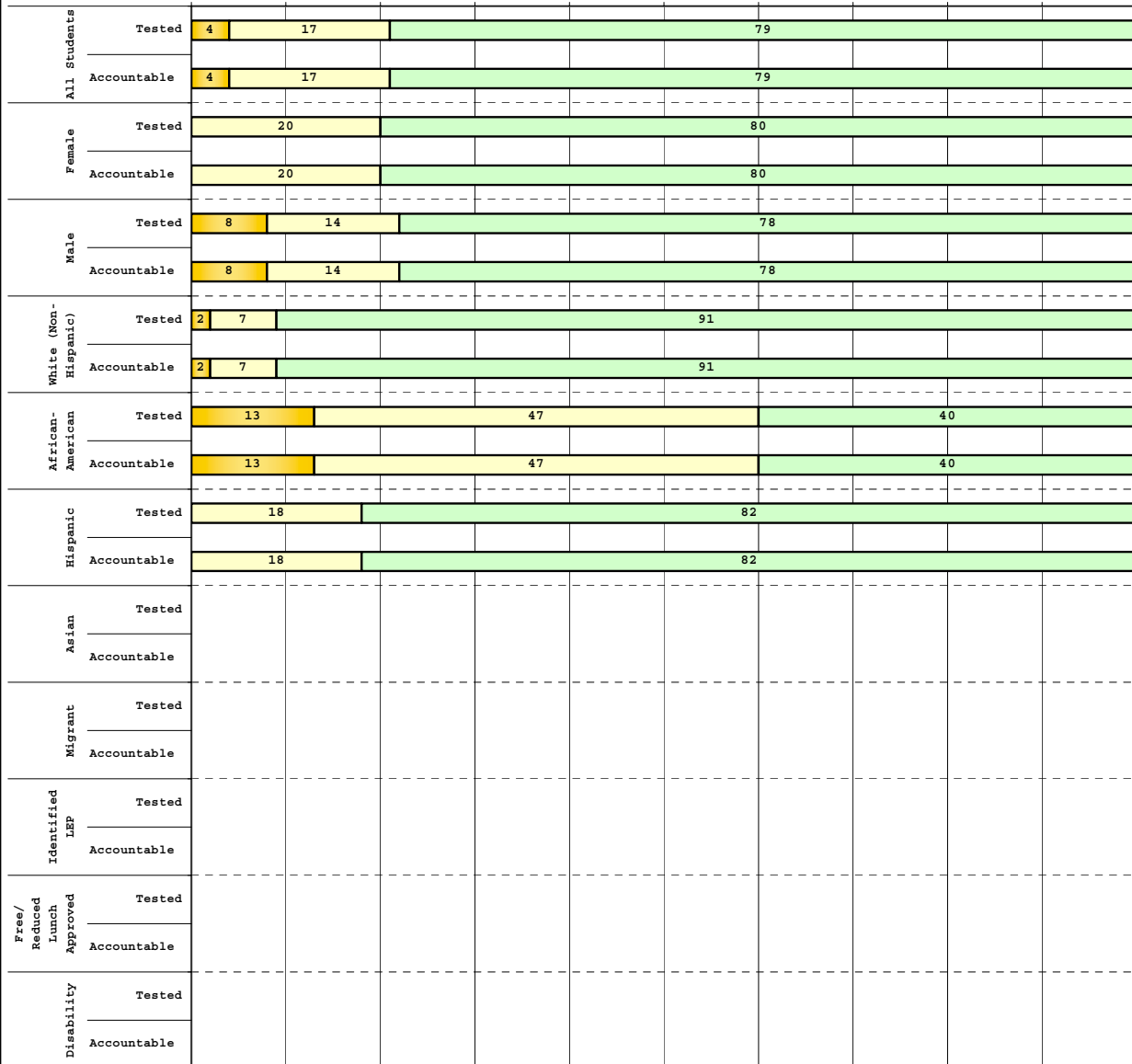
The horizontal bar represents the percent of students scoring at a performance level within a particular year. Percentages may not sum to 100% due to rounding.



2008-2009
INTERIM PERFORMANCE REPORT
MATHEMATICS DISAGGREGATION
Performance Level Percents

School: Maxwell Spanish Immersion Elem School
 District: Fayette County
 Code: 165074
 Grade: 03

0% 10% 20% 30% 40% 50% 60% 70% 80% 90% 100%



Tested Students

	N%	A%	P%	D%	P+D%
Total	0	4	17	79	96.30
Female	0	0	20	80	100.00
Male	0	8	14	78	91.67
White (Non-Hispanic)	0	2	7	91	97.78
African-American	0	13	47	40	86.67
Hispanic	0	0	18	82	100.00
Asian	Unreportable*				
Other	Unreportable*				
Title I					
Migrant					
Identified LEP	Unreportable*				
Extended Sch Services	0	11	50	39	88.89
Gifted/Talented	0	3	3	94	96.77
F/R Lunch Approved	Unreportable*				
Vocational/2 Credits					
Disability	Unreportable*				
Alternate Assessment					

NCLB Accountable Students

	N%	A%	P%	D%	P+D%
Total	0	4	17	79	96.34
Female	0	0	20	80	100.00
Male	0	8	14	78	91.89
White (Non-Hispanic)	0	2	7	91	97.83
African-American	0	13	47	40	86.67
Hispanic	0	0	18	82	100.00
Asian	Unreportable*				
Other	Unreportable*				
Title I					
Migrant					
Identified LEP	Unreportable*				
Extended Sch Services	0	11	50	39	88.89
Gifted/Talented	0	3	3	94	96.77
F/R Lunch Approved	Unreportable*				
Vocational/2 Credits					
Disability	Unreportable*				
Alternate Assessment					

 Novice
 Apprentice
 Proficient
 Distinguished

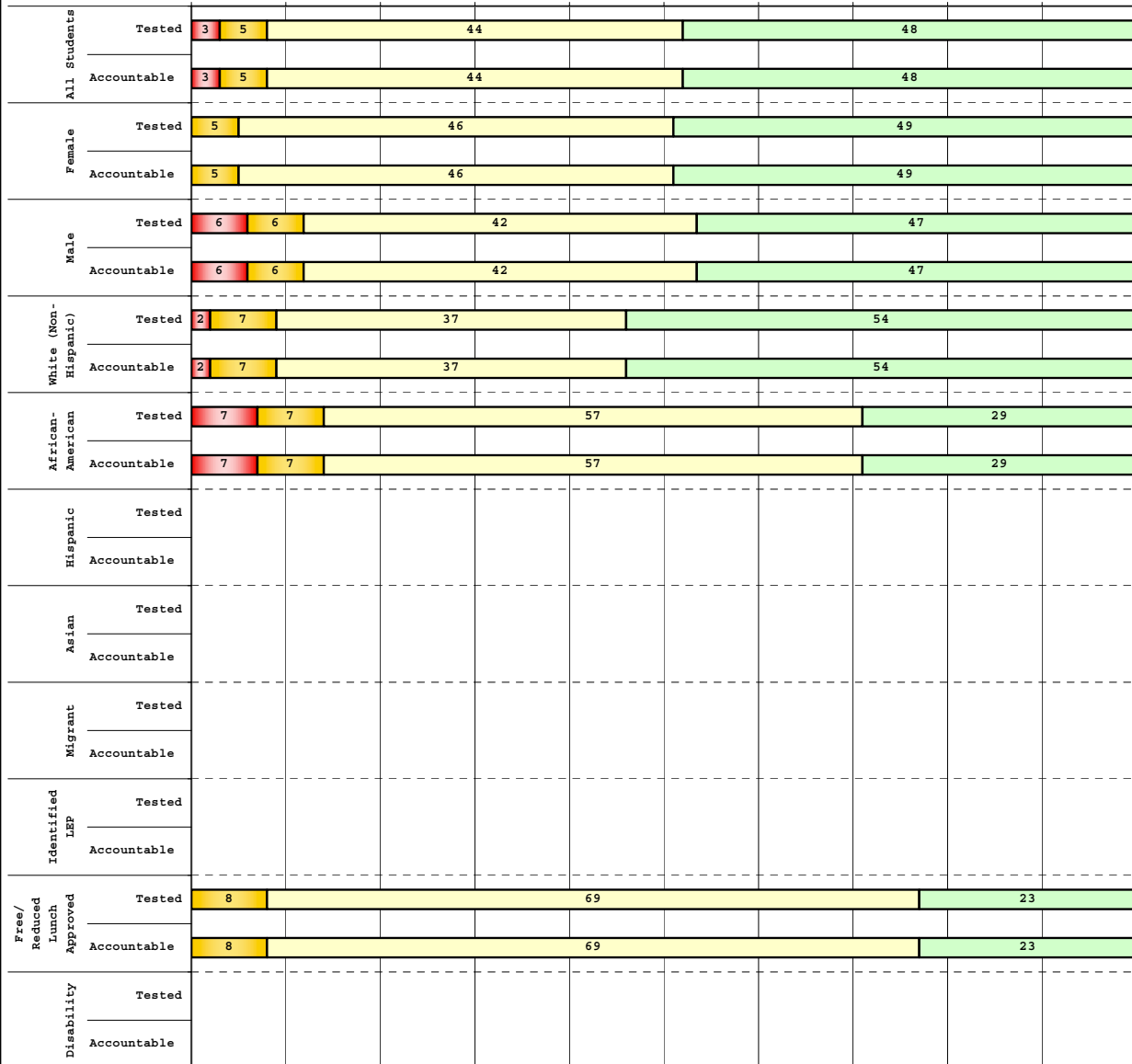
Percentage may not sum to 100% due to rounding. 'Unreportable*' indicates subpopulations with fewer than 10 students or subpopulations where all students score at the same performance level.



2008-2009
INTERIM PERFORMANCE REPORT
MATHEMATICS DISAGGREGATION
Performance Level Percents

School: Maxwell Spanish Immersion Elem School
 District: Fayette County
 Code: 165074
 Grade: 04

0% 10% 20% 30% 40% 50% 60% 70% 80% 90% 100%



Category	N%	A%	P%	D%	P+D%
Tested Students					
Total	3	5	44	48	92.00
Female	0	5	46	49	94.87
Male	6	6	42	47	88.89
White (Non-Hispanic)	2	7	37	54	91.30
African-American	7	7	57	29	85.71
Hispanic	Unreportable*				
Asian	Unreportable*				
Other	Unreportable*				
Title I					
Migrant					
Identified LEP	Unreportable*				
Extended Sch Services	12	12	53	24	76.47
Gifted/Talented	0	3	29	69	97.14
F/R Lunch Approved	0	8	69	23	92.31
Vocational/2 Credits					
Disability	Unreportable*				
Alternate Assessment					
NCLB Accountable Students					
Total	3	5	44	48	92.00
Female	0	5	46	49	94.87
Male	6	6	42	47	88.89
White (Non-Hispanic)	2	7	37	54	91.30
African-American	7	7	57	29	85.71
Hispanic	Unreportable*				
Asian	Unreportable*				
Other	Unreportable*				
Title I					
Migrant					
Identified LEP	Unreportable*				
Extended Sch Services	12	12	53	24	76.47
Gifted/Talented	0	3	29	69	97.14
F/R Lunch Approved	0	8	69	23	92.31
Vocational/2 Credits					
Disability	Unreportable*				
Alternate Assessment					

■ Novice
■ Apprentice
■ Proficient
■ Distinguished

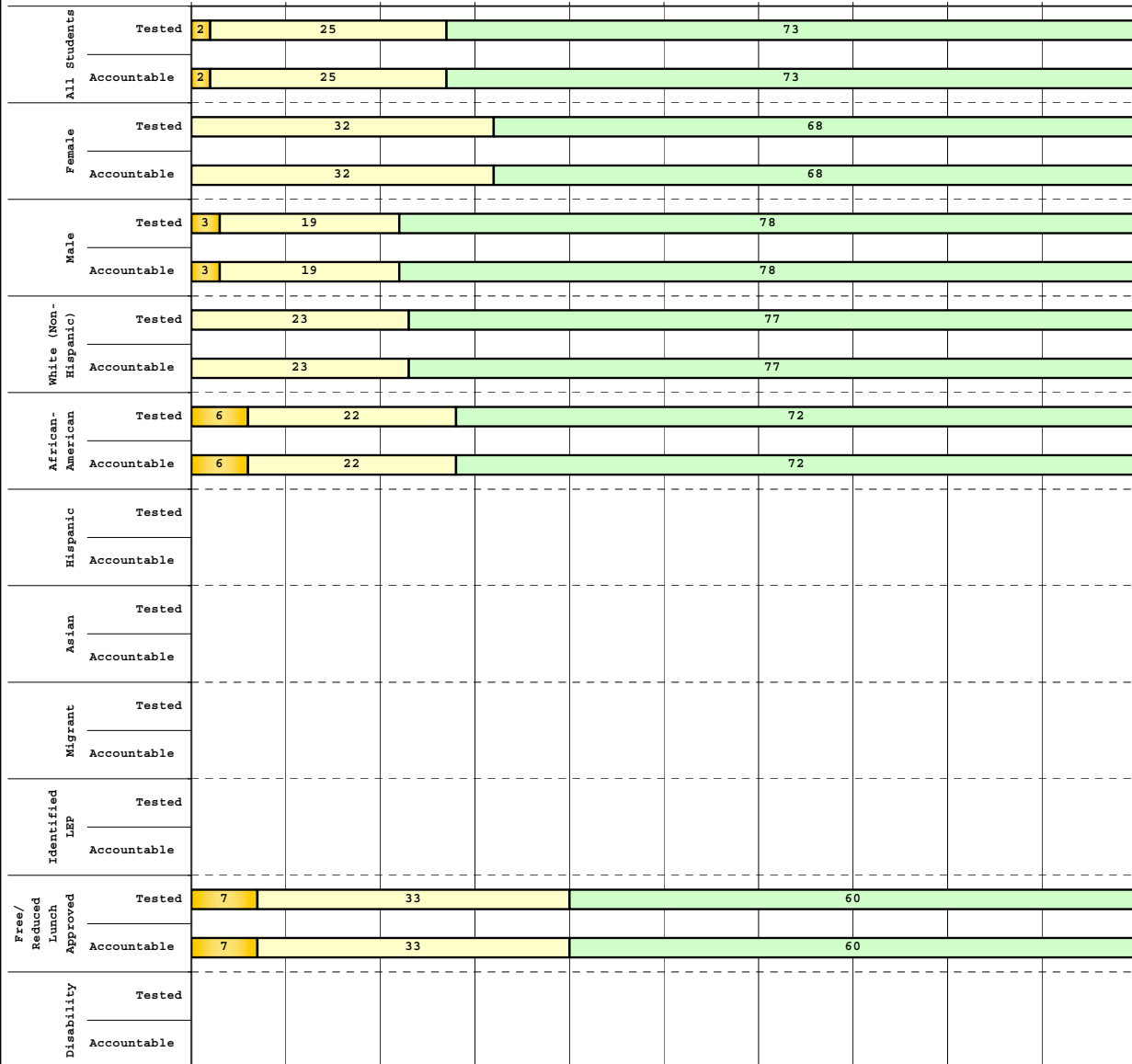
Percentage may not sum to 100% due to rounding. 'Unreportable*' indicates subpopulations with fewer than 10 students or subpopulations where all students score at the same performance level.



**2008-2009
INTERIM PERFORMANCE REPORT
MATHEMATICS DISAGGREGATION
Performance Level Percents**

School: Maxwell Spanish Immersion Elem School
 District: Fayette County
 Code: 165074
 Grade: 05

0% 10% 20% 30% 40% 50% 60% 70% 80% 90% 100%



	N%	A%	P%	D%	P+D%
Tested Students					
Total	0	2	25	73	98.41
Female	0	0	32	68	100.00
Male	0	3	19	78	96.88
White (Non-Hispanic)	0	0	23	77	100.00
African-American	0	6	22	72	94.44
Hispanic	Unreportable*				
Asian	Unreportable*				
Other	Unreportable*				
Title I					
Migrant					
Identified LEP					
Extended Sch Services	0	6	59	35	94.12
Gifted/Talented	0	0	8	92	100.00
F/R Lunch Approved	0	7	33	60	93.33
Vocational/2 Credits					
Disability	Unreportable*				
Alternate Assessment					
NCLB Accountable Students					
Total	0	2	25	73	98.41
Female	0	0	32	68	100.00
Male	0	3	19	78	96.88
White (Non-Hispanic)	0	0	23	77	100.00
African-American	0	6	22	72	94.44
Hispanic	Unreportable*				
Asian	Unreportable*				
Other	Unreportable*				
Title I					
Migrant					
Identified LEP					
Extended Sch Services	0	6	59	35	94.12
Gifted/Talented	0	0	8	92	100.00
F/R Lunch Approved	0	7	33	60	93.33
Vocational/2 Credits					
Disability	Unreportable*				
Alternate Assessment					

 Novice
 Apprentice
 Proficient
 Distinguished

Percentage may not sum to 100% due to rounding. 'Unreportable*' indicates subpopulations with fewer than 10 students or subpopulations where all students score at the same performance level.



2008-2009
INTERIM PERFORMANCE REPORT
MATHEMATICS CORE CONTENT

School: Maxwell Spanish Immersion Elem School
 District: Fayette County
 Code: 165074
 Grade: 03

	No. Items	No. Observations	SCHOOL								STATE								School -State Mean
			Percents						Mean	Std. Err.	Percents						Mean		
			B	0	1	2	3	4					No. Observations	B	0	1		2	3
OPEN RESPONSE																			
1.x.x - Number Prop Oper	5	203	1	7	27	30	14	22	2.1	0.1	125,243	0	21	35	26	10	8	1.5	0.6
2.x.x - Measurement	1	12	0	8	0	17	25	50	3.1	0.4	8,325	0	25	5	30	14	25	2.1	1.0
3.x.x - Geometry	2	29	0	0	17	3	31	48	3.1	0.2	16,777	0	8	24	35	13	20	2.1	1.0
4.x.x - Data Analysis & Probabilit	1	82	0	0	1	7	26	66	3.6	0.1	50,106	0	9	13	19	27	32	2.6	1.0
5.x.x - Algebraic Thinking	2	96	0	0	2	8	24	66	3.5	0.1	58,404	0	9	14	19	28	31	2.6	0.9
MULTIPLE CHOICE																			
1.x.x - Number Prop Oper	32	1,327	90		9		0		0.90	0.01	810,106	74		26		0		0.74	0.16
2.x.x - Measurement	7	299	91		9		1		0.91	0.02	183,647	81		18		0		0.81	0.10
3.x.x - Geometry	18	656	93		7		1		0.93	0.01	400,848	85		15		0		0.85	0.08
4.x.x - Data Analysis & Probabilit	8	314	84		15		0		0.84	0.03	192,126	69		31		0		0.69	0.15
5.x.x - Algebraic Thinking	11	356	91		9		1		0.91	0.02	217,089	78		22		0		0.78	0.13



2008-2009
INTERIM PERFORMANCE REPORT
MATHEMATICS CORE CONTENT

School: Maxwell Spanish Immersion Elem School
 District: Fayette County
 Code: 165074
 Grade: 04

	No. Items	No. Observations	SCHOOL								Std. Err.	No. Observations	STATE						School -State Mean
			B	0	1	2	3	4	Mean	B			0	1	2	3	4	Mean	
OPEN RESPONSE																			
1.x.x - Number Prop Oper	4	112	0	4	27	22	27	20	2.3	0.1	73,656	0	17	24	29	19	12	1.9	0.4
2.x.x - Measurement	1	12	0	17	17	17	33	17	2.2	0.4	8,195	0	43	13	10	20	13	1.5	0.7
3.x.x - Geometry	2	86	0	15	14	19	20	33	2.4	0.2	57,352	0	11	20	17	19	33	2.4	0.0
4.x.x - Data Analysis & Probabilit	1	12	0	0	25	0	50	25	2.8	0.3	8,152	0	5	36	29	23	6	1.9	0.9
5.x.x - Algebraic Thinking	2	86	0	1	12	34	31	22	2.6	0.1	57,508	0	5	27	32	25	11	2.1	0.5
MULTIPLE CHOICE																			
1.x.x - Number Prop Oper	31	998	79	21	0				0.79	0.01	664,194	67	33	0				0.67	0.12
2.x.x - Measurement	7	210	63	37	1				0.63	0.03	139,170	62	38	0				0.62	0.01
3.x.x - Geometry	14	420	74	26	0				0.74	0.02	278,460	77	23	0				0.77	-0.03
4.x.x - Data Analysis & Probabilit	12	455	82	18	0				0.82	0.02	303,394	71	29	0				0.71	0.11
5.x.x - Algebraic Thinking	11	383	80	20	0				0.80	0.02	253,829	69	31	0				0.69	0.11



**2008-2009
INTERIM PERFORMANCE REPORT
MATHEMATICS CORE CONTENT**

School: Maxwell Spanish Immersion Elem School
 District: Fayette County
 Code: 165074
 Grade: 05

	No. Items	No. Observations	SCHOOL								Mean	Std. Err.	No. Observations	STATE						Mean	School -State Mean
			B	0	1	2	3	4	B	0				1	2	3	4				
OPEN RESPONSE																					
1.x.x - Number Prop Oper	4	95	0	2	6	17	24	51	3.1	0.1	73,199	0	8	20	18	25	29	2.5	0.6		
2.x.x - Measurement	1	11	0	0	9	27	27	36	2.9	0.4	8,380	0	37	30	13	10	11	1.3	1.6		
3.x.x - Geometry	2	73	0	0	3	15	40	42	3.2	0.1	56,900	0	6	24	30	26	14	2.2	1.0		
4.x.x - Data Analysis & Probabilit	1	63	0	5	10	6	17	62	3.2	0.2	48,828	0	15	18	15	17	35	2.4	0.8		
5.x.x - Algebraic Thinking	1	10	0	0	10	0	30	60	3.4	0.4	8,005	0	13	15	20	17	35	2.5	0.9		
MULTIPLE CHOICE																					
1.x.x - Number Prop Oper	29	830	79	21	0				0.79	0.02	643,144	63	37	0				0.63	0.16		
2.x.x - Measurement	9	199	77	23	0				0.77	0.03	154,489	62	38	0				0.62	0.15		
3.x.x - Geometry	14	357	90	10	0				0.90	0.02	276,516	78	22	0				0.78	0.12		
4.x.x - Data Analysis & Probabilit	11	325	83	17	0				0.83	0.03	252,212	64	36	0				0.64	0.19		
5.x.x - Algebraic Thinking	10	315	86	14	0				0.86	0.03	244,140	65	35	0				0.65	0.21		



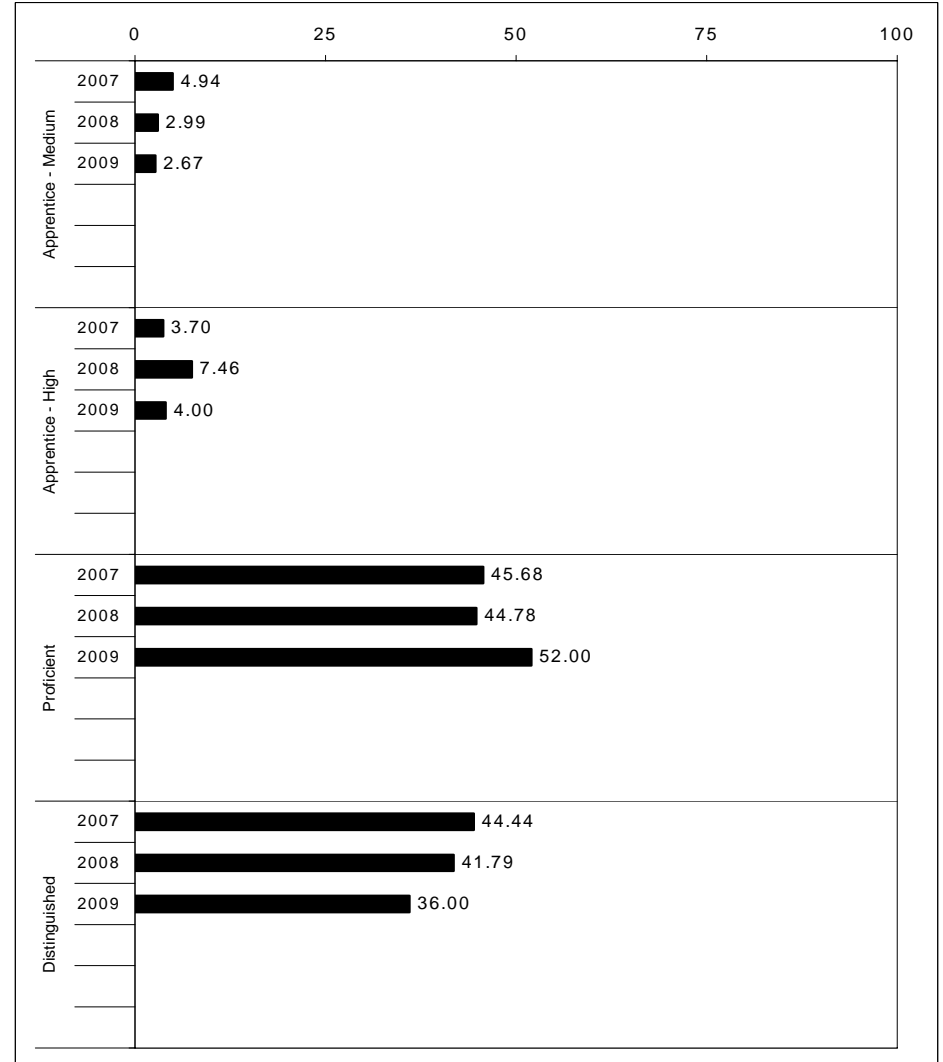
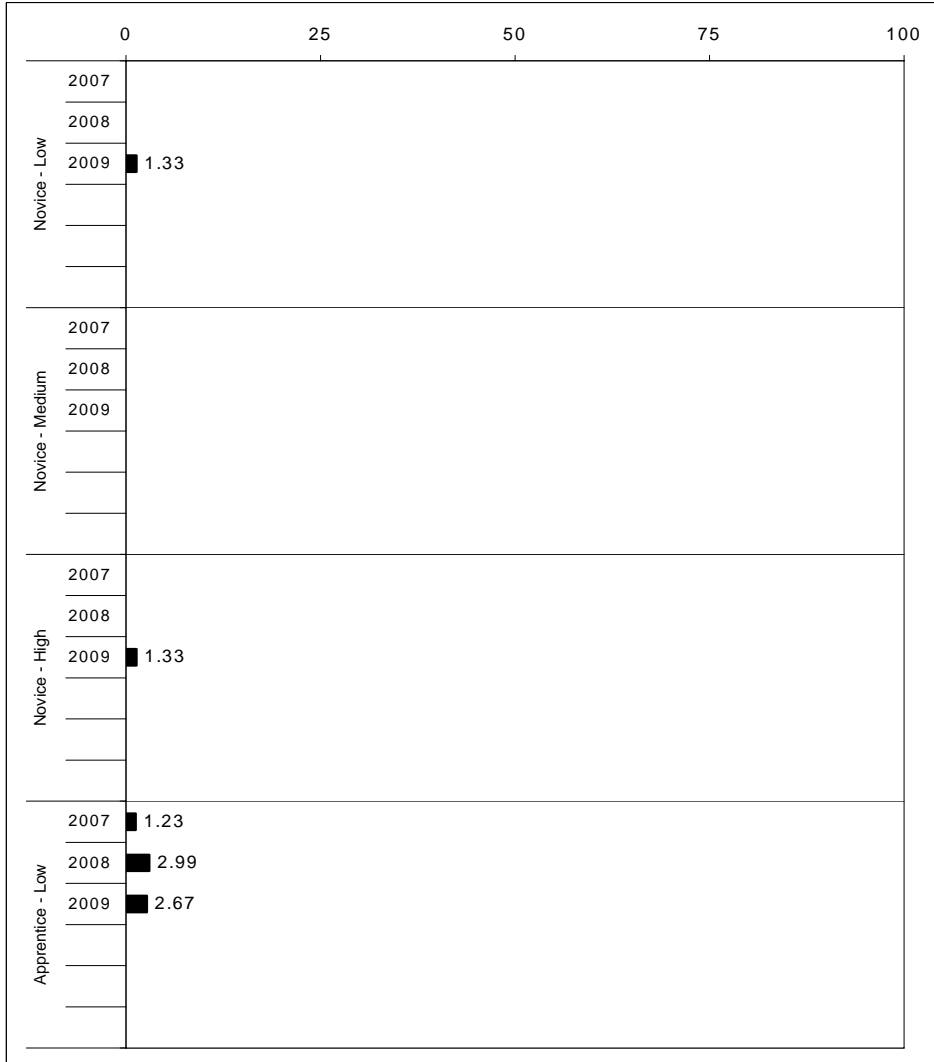
2008-2009
INTERIM PERFORMANCE REPORT
SCIENCE TREND DATA
Performance Level Percents

School: Maxwell Spanish Immersion Elem School

District: Fayette County

Code: 165074

Grade: 04



The horizontal bar represents the percent of students scoring at a performance level within a particular year. Percentages may not sum to 100% due to rounding.



**2008-2009
INTERIM PERFORMANCE REPORT
SCIENCE DISAGGREGATION
Performance Level Percents**

School: Maxwell Spanish Immersion Elem School
District: Fayette County
Code: 165074
Grade: 04

		0%	10%	20%	30%	40%	50%	60%	70%	80%	90%	100%	N%	A%	P%	D%	P+D%
All Students	Tested	3	9	52								36					
	100 Days	3	9	52								36					
Female	Tested	10		51								38					
	100 Days	10		51								38					
Male	Tested	6	8	53								33					
	100 Days	6	8	53								33					
White (Non-Hispanic)	Tested	4	4	48								43					
	100 Days	4	4	48								43					
African-American	Tested	21		64								14					
	100 Days	21		64								14					
Hispanic	Tested																
	100 Days																
Asian	Tested																
	100 Days																
Migrant	Tested																
	100 Days																
Identified LEP	Tested																
	100 Days																
Free/Reduced Lunch Approved	Tested	23		69								8					
	100 Days	23		69								8					
Disability	Tested																
	100 Days																

		N%	A%	P%	D%	P+D%
Tested Students						
Total		3	9	52	36	88.00
Female		0	10	51	38	89.74
Male		6	8	53	33	86.11
White (Non-Hispanic)		4	4	48	43	91.30
African-American		0	21	64	14	78.57
Hispanic	Unreportable*					
Asian	Unreportable*					
Other	Unreportable*					
Title I						
Migrant						
Identified LEP	Unreportable*					
Extended Sch Services		6	29	41	24	64.71
Gifted/Talented		0	0	40	60	100.00
F/R Lunch Approved		0	23	69	8	76.92
Vocational/2 Credits						
Disability	Unreportable*					
Alternate Assessment						
100 Day Students						
Total		3	9	52	36	88.00
Female		0	10	51	38	89.74
Male		6	8	53	33	86.11
White (Non-Hispanic)		4	4	48	43	91.30
African-American		0	21	64	14	78.57
Hispanic	Unreportable*					
Asian	Unreportable*					
Other	Unreportable*					
Title I						
Migrant						
Identified LEP	Unreportable*					
Extended Sch Services		6	29	41	24	64.71
Gifted/Talented		0	0	40	60	100.00
F/R Lunch Approved		0	23	69	8	76.92
Vocational/2 Credits						
Disability	Unreportable*					
Alternate Assessment						

- Novice
- Apprentice
- Proficient
- Distinguished

Percentage may not sum to 100% due to rounding. 'Unreportable*' indicates subpopulations with fewer than 10 students or subpopulations where all students score at the same performance level.



2008-2009
INTERIM PERFORMANCE REPORT
SCIENCE CORE CONTENT

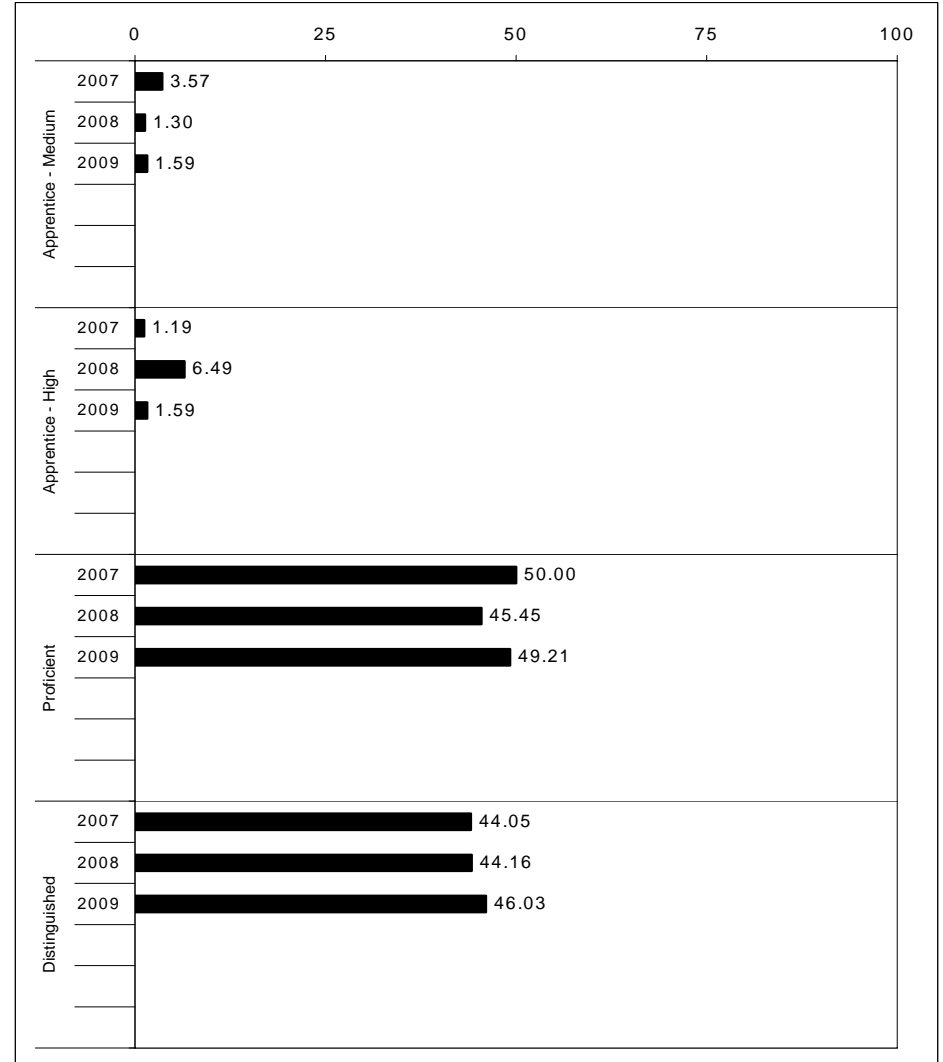
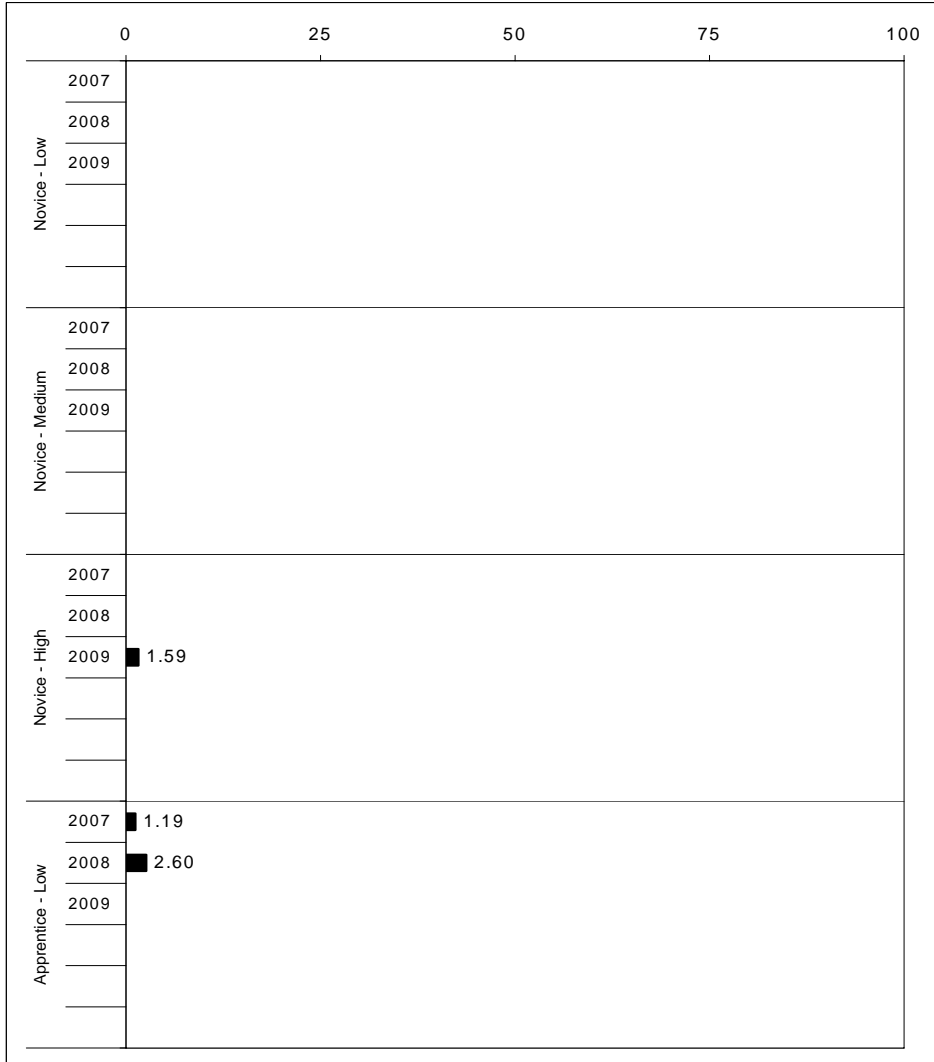
School: Maxwell Spanish Immersion Elem School
 District: Fayette County
 Code: 165074
 Grade: 04

	No. Items	No. Observations	SCHOOL								STATE								School -State Mean
			B	0	1	2	3	4	Mean	Std. Err.	No. Observations	B	0	1	2	3	4	Mean	
OPEN RESPONSE																			
1.x.x - Physical Science	2	24	0	8	13	63	13	4	1.9	0.2	16,337	0	17	19	42	17	5	1.7	0.2
2.x.x - Earth Space Science	3	99	0	5	28	37	21	8	2.0	0.1	65,658	0	12	22	35	26	4	1.9	0.1
3.x.x - Biological Science	3	99	0	2	4	39	37	17	2.6	0.1	65,506	0	2	11	33	44	9	2.5	0.1
4.x.x - Unifying Concepts	2	86	0	0	3	20	45	31	3.0	0.1	57,508	0	3	13	33	35	15	2.5	0.5
MULTIPLE CHOICE																			
1.x.x - Physical Science	18	592	84	16	0				0.84	0.02	393,336	82	18	0				0.81	0.03
2.x.x - Earth Space Science	19	604	76	24	0				0.76	0.02	401,488	71	29	0				0.71	0.05
3.x.x - Biological Science	22	704	85	15	0				0.85	0.02	467,138	78	22	0				0.78	0.07
4.x.x - Unifying Concepts	14	480	92	8	0				0.92	0.02	319,534	84	15	0				0.84	0.08



2008-2009
INTERIM PERFORMANCE REPORT
SOCIAL STUDIES TREND DATA
Performance Level Percents

School: Maxwell Spanish Immersion Elem School
 District: Fayette County
 Code: 165074
 Grade: 05



The horizontal bar represents the percent of students scoring at a performance level within a particular year. Percentages may not sum to 100% due to rounding.



2008-2009
INTERIM PERFORMANCE REPORT
SOCIAL STUDIES DISAGGREGATION
Performance Level Percents

School: Maxwell Spanish Immersion Elem School
 District: Fayette County
 Code: 165074
 Grade: 05

		0%	10%	20%	30%	40%	50%	60%	70%	80%	90%	100%	N%	A%	P%	D%	P+D%	
All Students	Tested												Tested Students					
	100 Days												Total	2	3	49	46	95.24
Female	Tested												Female	0	3	48	48	96.77
	100 Days												Male	3	3	50	44	93.75
Male	Tested												White (Non-Hispanic)	0	3	43	54	97.14
	100 Days												African-American	6	6	67	22	88.89
White (Non-Hispanic)	Tested												Hispanic	Unreportable*				
	100 Days												Asian	Unreportable*				
African-American	Tested												Other	Unreportable*				
	100 Days												Title I					
Hispanic	Tested												Migrant					
	100 Days												Identified LEP					
Asian	Tested												Extended Sch Services	6	0	82	12	94.12
	100 Days												Gifted/Talented	0	4	24	72	96.00
Migrant	Tested												F/R Lunch Approved	7	0	67	27	93.33
	100 Days												Vocational/2 Credits					
Identified LEP	Tested												Disability	Unreportable*				
	100 Days												Alternate Assessment					
Free/Reduced Lunch Approved	Tested												100 Day Students					
	100 Days												Total	2	3	49	46	95.24
Disability	Tested												Female	0	3	48	48	96.77
	100 Days												Male	3	3	50	44	93.75
	Tested												White (Non-Hispanic)	0	3	43	54	97.14
	100 Days												African-American	6	6	67	22	88.89

■	Novice
■	Apprentice
■	Proficient
■	Distinguished

Percentage may not sum to 100% due to rounding. 'Unreportable*' indicates subpopulations with fewer than 10 students or subpopulations where all students score at the same performance level.



2008-2009
INTERIM PERFORMANCE REPORT
SOCIAL STUDIES CORE CONTENT

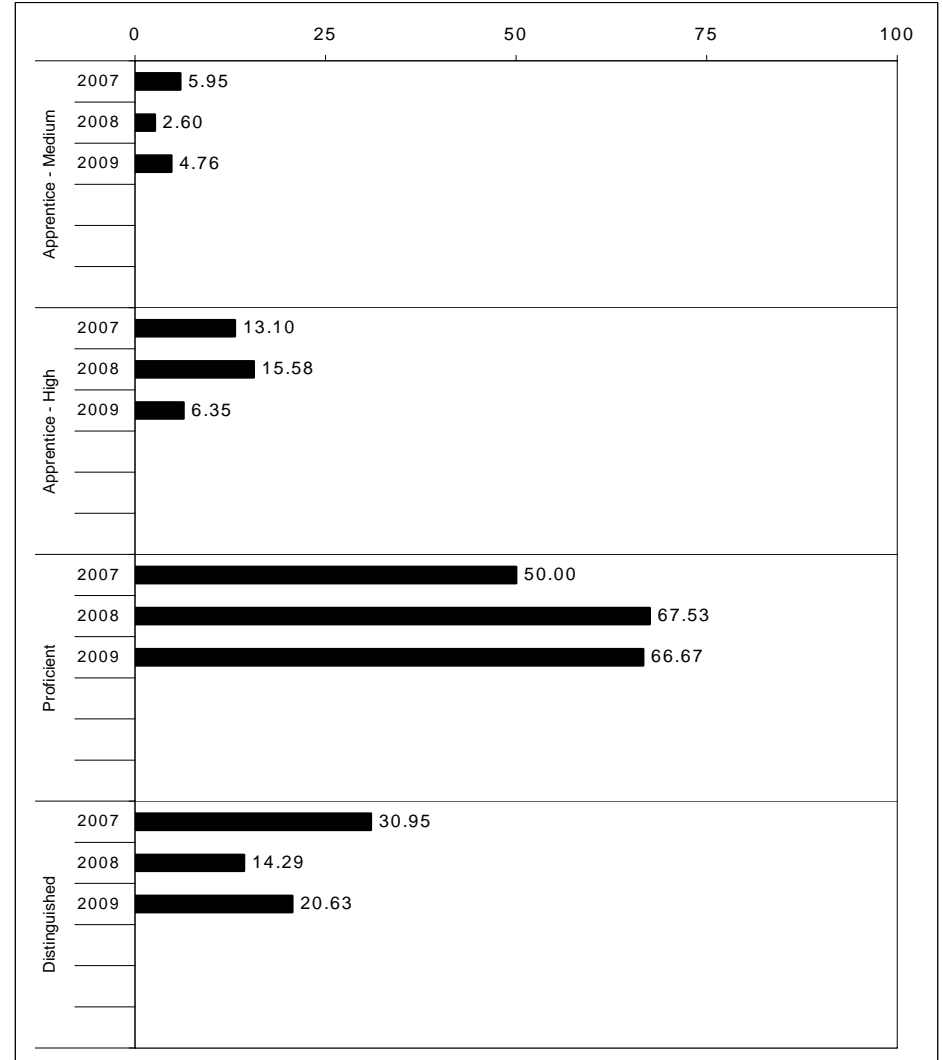
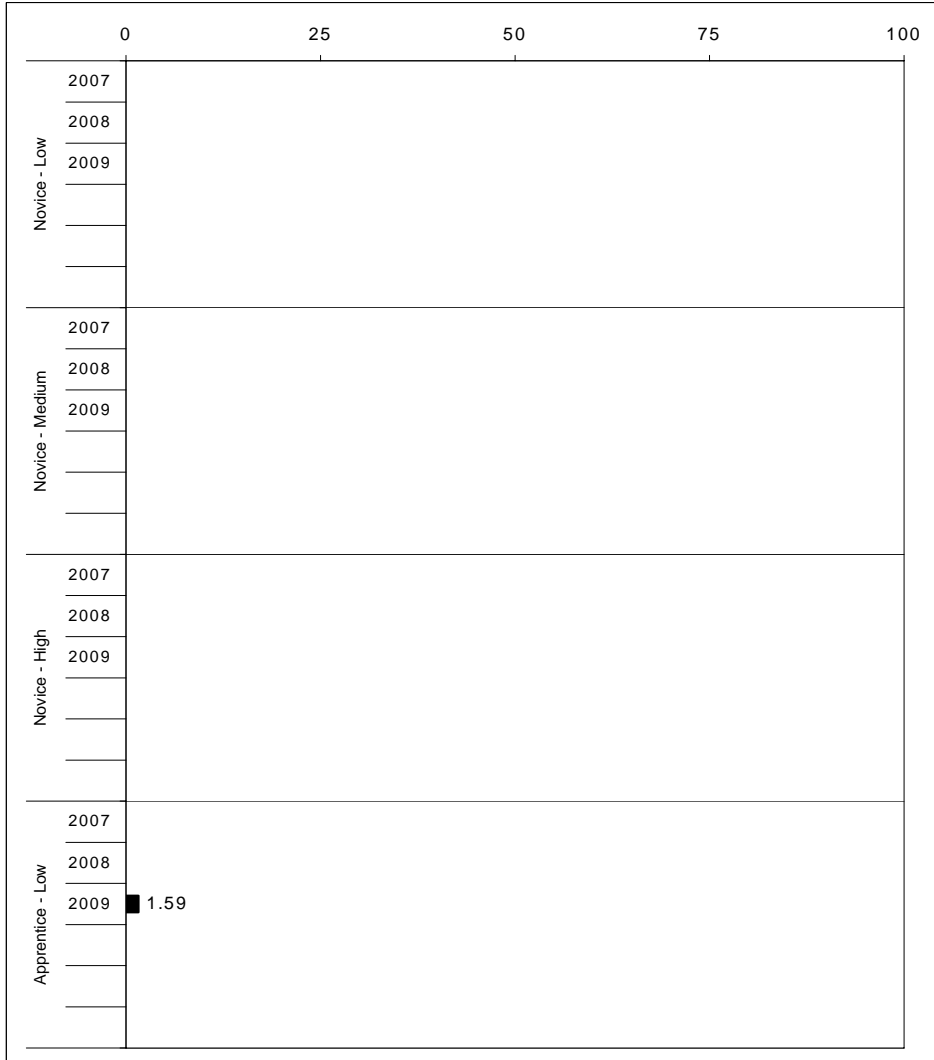
School: Maxwell Spanish Immersion Elem School
 District: Fayette County
 Code: 165074
 Grade: 05

	No. Items	No. Observations	SCHOOL								STATE								School -State Mean
			B	0	1	2	3	4	Mean	Std. Err.	No. Observations	B	0	1	2	3	4	Mean	
OPEN RESPONSE																			
1.x.x - Government & Civics	2	74	0	0	9	62	23	5	2.2	0.1	56,903	0	5	37	45	10	2	1.7	0.5
2.x.x - Cultures & Societies	1	10	0	10	10	50	30	0	2.0	0.3	8,151	0	4	21	56	15	4	1.9	0.1
3.x.x - Economics	1	63	0	3	11	56	24	6	2.2	0.1	48,828	0	11	33	41	12	3	1.6	0.6
4.x.x - Geography	2	20	0	0	20	50	25	5	2.2	0.2	16,077	0	9	32	39	17	3	1.7	0.5
5.x.x - Historical Perspective	3	85	0	0	18	58	19	6	2.1	0.1	65,353	0	7	35	46	10	2	1.7	0.4
MULTIPLE CHOICE																			
1.x.x - Government & Civics	14	409	78	22	0				0.78	0.02	317,571	66	34	0				0.66	0.12
2.x.x - Cultures & Societies	11	273	85	15	0				0.85	0.03	211,383	70	30	0				0.69	0.16
3.x.x - Economics	11	326	83	18	0				0.83	0.02	252,215	73	27	0				0.73	0.10
4.x.x - Geography	16	482	78	22	0				0.78	0.02	374,337	66	34	0				0.66	0.12
5.x.x - Historical Perspective	27	757	83	17	0				0.83	0.02	586,076	69	31	0				0.69	0.14



2008-2009
INTERIM PERFORMANCE REPORT
WRITING ON-DEMAND TREND DATA
Performance Level Percents

School: Maxwell Spanish Immersion Elem School
 District: Fayette County
 Code: 165074
 Grade: 05



The horizontal bar represents the percent of students scoring at a performance level within a particular year. Percentages may not sum to 100% due to rounding.



2008-2009
INTERIM PERFORMANCE REPORT
WRITING ON-DEMAND DISAGGREGATION
Performance Level Percents

School: Maxwell Spanish Immersion Elem School
 District: Fayette County
 Code: 165074
 Grade: 05

		0%	10%	20%	30%	40%	50%	60%	70%	80%	90%	100%	N%	A%	P%	D%	P+D%	
All Students	Tested												Tested Students					
	100 Days												Total	0	13	67	21	87.30
Female	Tested												Female	0	6	65	29	93.55
	100 Days												Male	0	19	69	13	81.25
Male	Tested												White (Non-Hispanic)	0	11	66	23	88.57
	100 Days												African-American	0	17	67	17	83.33
White (Non-Hispanic)	Tested												Hispanic	Unreportable*				
	100 Days												Asian	Unreportable*				
African-American	Tested												Other	Unreportable*				
	100 Days												Title I					
Hispanic	Tested												Migrant					
	100 Days												Identified LEP					
Asian	Tested												Extended Sch Services	0	41	53	6	58.82
	100 Days												Gifted/Talented	0	4	76	20	96.00
Migrant	Tested												F/R Lunch Approved	0	20	67	13	80.00
	100 Days												Vocational/2 Credits					
Identified LEP	Tested												Disability	Unreportable*				
	100 Days												Alternate Assessment					
Free/Reduced Lunch Approved	Tested												100 Day Students					
	100 Days												Total	0	13	67	21	87.30
Disability	Tested												Female	0	6	65	29	93.55
	100 Days												Male	0	19	69	13	81.25
													White (Non-Hispanic)	0	11	66	23	88.57
													African-American	0	17	67	17	83.33
													Hispanic	Unreportable*				
													Asian	Unreportable*				
													Other	Unreportable*				
													Title I					
													Migrant					
													Identified LEP					
													Extended Sch Services	0	41	53	6	58.82
													Gifted/Talented	0	4	76	20	96.00
													F/R Lunch Approved	0	20	67	13	80.00
													Vocational/2 Credits					
													Disability	Unreportable*				
													Alternate Assessment					

■	Novice
■	Apprentice
■	Proficient
■	Distinguished

Percentage may not sum to 100% due to rounding. 'Unreportable*' indicates subpopulations with fewer than 10 students or subpopulations where all students score at the same performance level.



2008-2009
INTERIM PERFORMANCE REPORT
WRITING ON-DEMAND CORE CONTENT

School: Maxwell Spanish Immersion Elem School
 District: Fayette County
 Code: 165074
 Grade: 05

WRITING PROMPT	SCHOOL											STATE											School -State Mean	
	No. Observations	Percents										Mean	Percents											Mean
	B	0	1	2	3	4	5	6	7	8	Mean	B	0	1	2	3	4	5	6	7	8	Mean		
Inform																								
1.X.X - Content	21	0	0	0	0	0	29	14	52	0	5	5.38	0	1	1	9	9	34	18	21	4	2	4.43	0.95
2.X.X - Structure	21	0	0	0	0	0	33	19	43	5	0	5.19	0	1	2	9	10	35	19	19	3	1	4.33	0.86
3.X.X - Convention	21	0	0	0	0	0	24	24	48	0	5	5.38	0	0	0	12	11	34	19	19	3	1	4.38	1.00
Narrate for a purpose																								
1.X.X - Content	21	0	0	0	0	0	33	24	19	14	10	5.43	0	1	1	10	9	36	18	21	3	1	4.35	1.08
2.X.X - Structure	21	0	0	0	0	0	38	24	14	14	10	5.33	0	1	2	10	10	37	17	19	3	1	4.27	1.06
3.X.X - Convention	21	0	0	0	0	0	33	29	19	10	10	5.33	0	0	0	12	10	36	18	19	3	1	4.33	1.00
Persuade																								
1.X.X - Content	21	0	0	0	0	19	24	14	29	5	10	5.05	0	1	1	8	8	33	19	21	5	3	4.50	0.55
2.X.X - Structure	21	0	0	0	0	10	38	24	14	5	10	4.95	0	2	2	9	10	33	19	20	5	2	4.42	0.53
3.X.X - Convention	21	0	0	0	0	10	38	19	19	5	10	5.00	0	0	0	11	10	32	19	20	5	2	4.50	0.50

MULTIPLE CHOICE	No. Items	SCHOOL						STATE						School -State Mean
		No. Observations	Percents			Mean	Std. Err.	No. Observations	Percents			Mean		
		Correct	Incorrect	Omit/Mult				Correct	Incorrect	Omit/Mult				
4.x.x - Writing Process	52	756	85	15	0	0.85	0.02	585,936	73	27	0	0.73	0.12	
4.10.x - Revising	16	169	82	18	0	0.82	0.04	130,317	66	34	0	0.66	0.16	
4.11.x - Editing	36	587	86	14	0	0.86	0.02	455,619	75	24	0	0.75	0.11	