



Interim Performance Report

In March 2009, the Kentucky General Assembly passed Senate Bill 1 (SB1) that was subsequently signed into law by the Governor. SB1 calls for a significant overhaul of the state's assessment and accountability system. The new assessment system begins in the spring of 2012. The school years of 2008-2009, 2009-2010 and 2010-2011 are described in SB1 as an interim period. This three-year period allows Kentucky to develop the new assessment system and to carry on state and federal testing requirements.

The Interim Performance Report includes the Kentucky Core Content Test (KCCT) in Reading (grades 3-8 and 10), Mathematics (grades 3-8 and 11), Science (grades 4, 7 and 11), Social Studies (grades 5, 8 and 11) and Writing On-Demand (grades 5, 8 and 12). The KCCT is based on the Kentucky Core Content for Assessment (Version 4.1) and contains multiple choice and open response questions. The Writing On-Demand test uses writing prompts that require students to craft a piece of writing in a 60 minute period.

The KCCT is developed under the direction of content advisory committees of Kentucky educators who draft, review and select test questions. All test items are reviewed by a bias review committee to enhance the fairness of items for all Kentucky students.

The KCCT continues to fulfill the requirements of the federal statute known as the No Child Left Behind Act of 2001. A separate accountability report for No Child Left Behind (NCLB) is published by the Kentucky Department of Education.

The Interim Performance Report focuses entirely on the five state-required content areas and provides data for schools or districts. The data in this report is not used directly for state accountability; although, these results can fulfill the requirements of Senate Bill 168 from 2002 and may be used by schools or districts for their own local accountability needs.

Performance standards are based on descriptions of Novice, Apprentice, Proficient and Distinguished (NAPD) student performance levels specific to the content area and grade being assessed. The performance standards, in conjunction with Kentucky's Core Content for Assessment, should allow instruction to better focus on the content area to be taught and on how well students must demonstrate achievement in each content area.

Reporting Changes for 2009

Based on SB1, Kentucky will not be reporting state accountability and academic indices as in the past. The report does have several familiar pages with performance level (NAPD) trend, core content and disaggregation data per content area. Districts and schools will still see distributions of how students scored in the Novice (with sublevels), Apprentice (with sublevels), Proficient and Distinguished performance levels.

Confidentiality Changes

Due to federal regulations around the Family Education Rights and Privacy Act (FERPA), the numbers of students have been removed. Though there is a need to report as much data as possible, there is also a paramount need to maintain the confidential aspects of individual scores. When scores are reported in what is commonly called "small cells" where very few students may be categorized, there is the possibility of revealing individual scores when numbers are reported. Numbers are reported to each district in a confidential report that accompanies the public Interim Performance Report.

**2008-2009  
INTERIM PERFORMANCE REPORT**

School: LIBERTY ELEMENTARY  
District: Fayette County  
Code: 165057  
Grade: PRIMARY-05

**CONTENTS OF THIS REPORT**

Introduction	1
Academic Trend Data	
Reading Results	2-8
Mathematics Results	9-15
Science Results	16-18
Social Studies Results	19-21
Writing Results	22-24

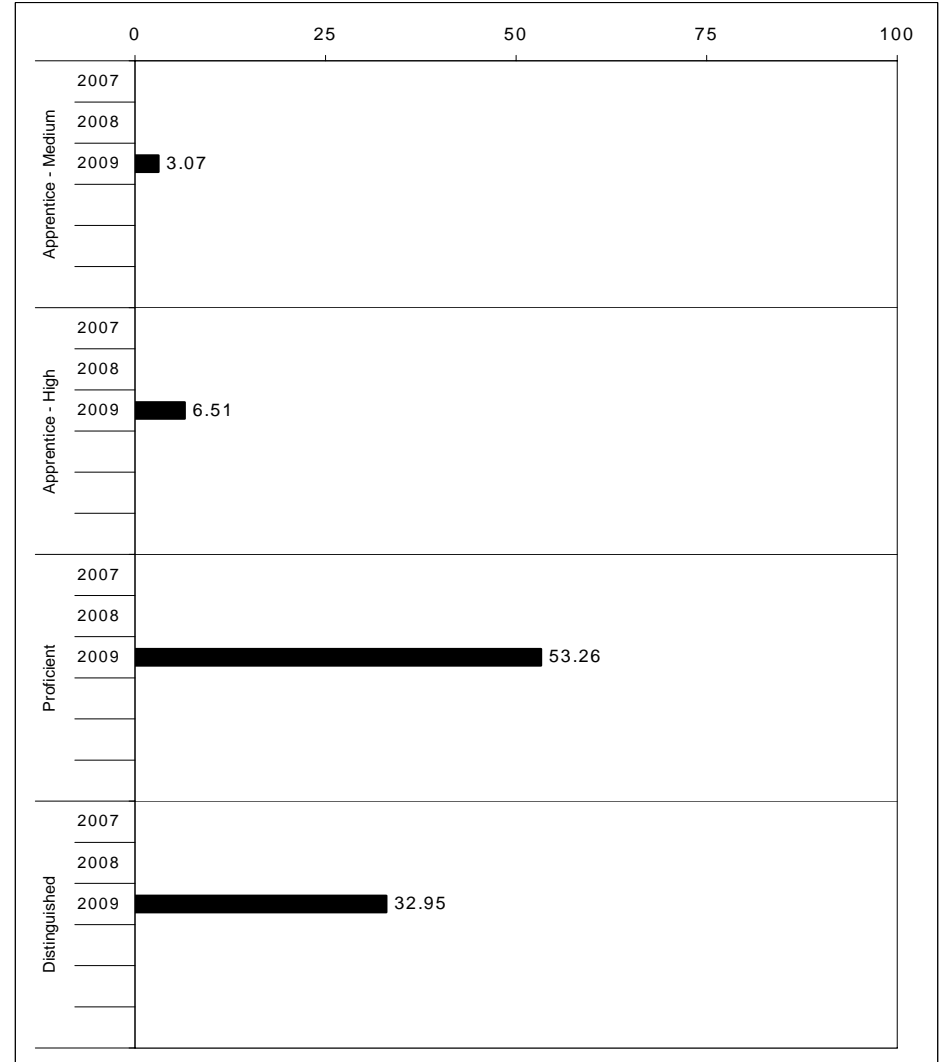
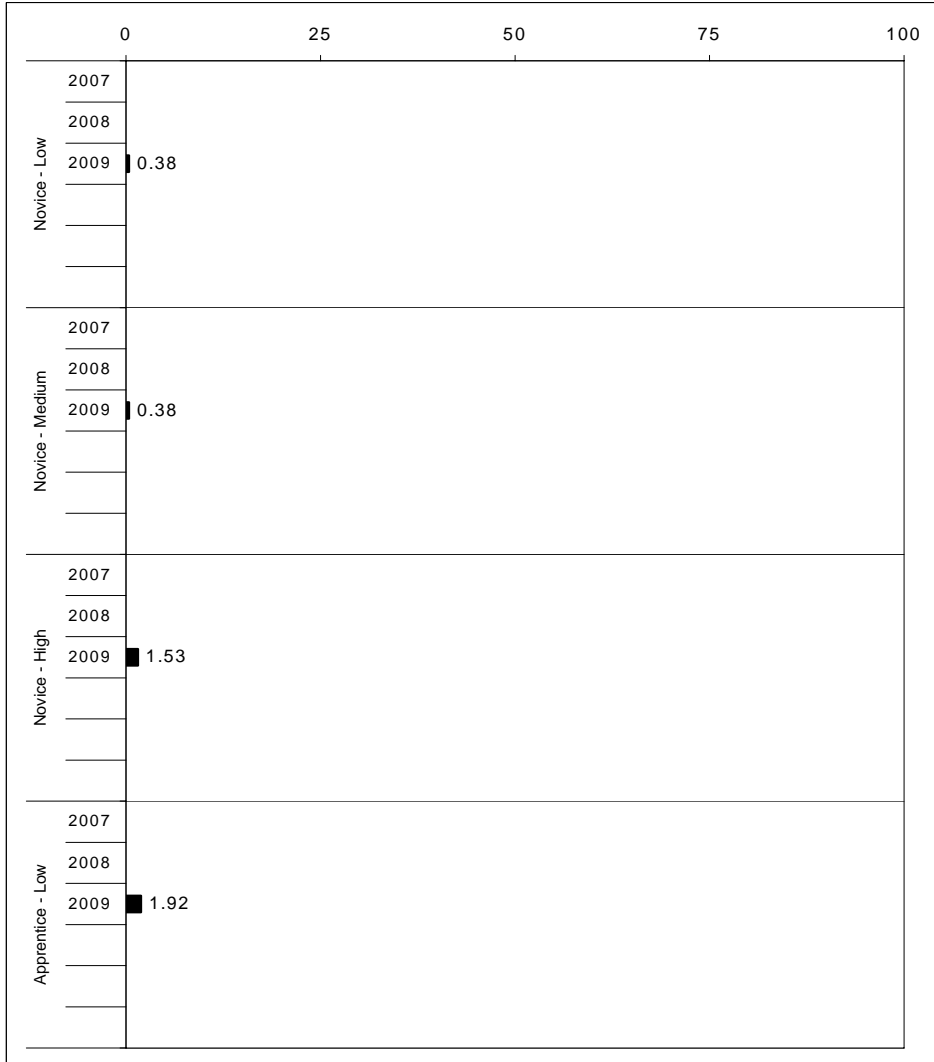
For more information, refer to the 2009 Interim Assessment Interpretative Guide on the Kentucky Department of Education Web site ([www.education.ky.gov](http://www.education.ky.gov)).





2008-2009  
**INTERIM PERFORMANCE REPORT**  
**READING TREND DATA**  
**Performance Level Percents**

School: LIBERTY ELEMENTARY  
 District: Fayette County  
 Code: 165057  
 Grade: ELEMENTARY



The horizontal bar represents the percent of students scoring at a performance level within a particular year. Percentages may not sum to 100% due to rounding.



**2008-2009  
INTERIM PERFORMANCE REPORT  
READING DISAGGREGATION  
Performance Level Percents**

School: LIBERTY ELEMENTARY  
District: Fayette County  
Code: 165057  
Grade: 03

		0%	10%	20%	30%	40%	50%	60%	70%	80%	90%	100%	N%	A%	P%	D%	P+D%						
All Students	Tested	2	4	53								41				<b>Tested Students</b>							
	Accountable	2	5	53								40				Total	2	4	53	41	93.81		
Female	Tested	2	53								45				Female	2	0	53	45	97.96			
	Accountable	2	2	53								43				Male	2	8	52	38	89.58		
Male	Tested	2	8	52								38				White (Non-Hispanic)	0	3	52	45	96.67		
	Accountable	2	8	52								38				African-American	5	5	59	32	90.91		
White (Non-Hispanic)	Tested	3	52								45				Hispanic	Unreportable*							
	Accountable	3	53								44				Asian	Unreportable*							
African-American	Tested	5	5	59								32				Other	Unreportable*						
	Accountable	4	9	57								30				Title I							
Hispanic	Tested																	Migrant	Unreportable*				
	Accountable																	Identified LEP	Unreportable*				
Asian	Tested																	Extended Sch Services					
	Accountable																	Gifted/Talented	0	0	20	80	100.00
Migrant	Tested																	F/R Lunch Approved	5	5	55	35	90.00
	Accountable																	Vocational/2 Credits					
Identified LEP	Tested																	Disability	Unreportable*				
	Accountable																	Alternate Assessment					
Free/Reduced Lunch Approved	Tested	5	5	55								35				<b>NCLB Accountable Students</b>							
	Accountable	5	5	56								33				Total	2	5	53	40	92.78		
Disability	Tested																	Female	2	2	53	43	95.92
	Accountable																	Male	2	8	52	38	89.58
													White (Non-Hispanic)	0	3	53	44	96.61					
													African-American	4	9	57	30	86.96					
													Hispanic	Unreportable*									
													Asian	Unreportable*									
													Other	Unreportable*									
													Title I										
													Migrant	Unreportable*									
													Identified LEP	Unreportable*									
													Extended Sch Services										
													Gifted/Talented	0	0	20	80	100.00					
													F/R Lunch Approved	5	5	56	33	89.74					
													Vocational/2 Credits										
													Disability	Unreportable*									
													Alternate Assessment										

■	Novice
■	Apprentice
■	Proficient
■	Distinguished

Percentage may not sum to 100% due to rounding. 'Unreportable\*' indicates subpopulations with fewer than 10 students or subpopulations where all students score at the same performance level.



**2008-2009  
INTERIM PERFORMANCE REPORT  
READING DISAGGREGATION  
Performance Level Percents**

School: LIBERTY ELEMENTARY  
District: Fayette County  
Code: 165057  
Grade: 04

		0%	10%	20%	30%	40%	50%	60%	70%	80%	90%	100%	N%	A%	P%	D%	P+D%		
All Students	Tested	2	14	47				37											
	Accountable	2	15	45				38											
Female	Tested	17		40				42											
	Accountable	19		38				44											
Male	Tested	5	10	55				30											
	Accountable	5	10	54				31											
White (Non-Hispanic)	Tested	6	42				52												
	Accountable	7	40				53												
African-American	Tested	3	21	52				24											
	Accountable	4	22	48				26											
Hispanic	Tested																		
	Accountable																		
Asian	Tested																		
	Accountable																		
Migrant	Tested																		
	Accountable																		
Identified LEP	Tested																		
	Accountable																		
Free/Reduced Lunch Approved	Tested	4	22	48				26											
	Accountable	4	23	47				26											
Disability	Tested																		
	Accountable																		

		N%	A%	P%	D%	P+D%
<b>Tested Students</b>						
Total		2	14	47	37	83.70
Female		0	17	40	42	82.69
Male		5	10	55	30	85.00
White (Non-Hispanic)		0	6	42	52	93.75
African-American		3	21	52	24	75.86
Hispanic	Unreportable*					
Asian	Unreportable*					
Other	Unreportable*					
Title I						
Migrant						
Identified LEP	Unreportable*					
Extended Sch Services						
Gifted/Talented		0	0	20	80	100.00
F/R Lunch Approved		4	22	48	26	74.00
Vocational/2 Credits						
Disability	Unreportable*					
Alternate Assessment						
<b>NCLB Accountable Students</b>						
Total		2	15	45	38	82.76
Female		0	19	38	44	81.25
Male		5	10	54	31	84.62
White (Non-Hispanic)		0	7	40	53	93.33
African-American		4	22	48	26	74.07
Hispanic	Unreportable*					
Asian	Unreportable*					
Other	Unreportable*					
Title I						
Migrant						
Identified LEP	Unreportable*					
Extended Sch Services						
Gifted/Talented		0	0	20	80	100.00
F/R Lunch Approved		4	23	47	26	72.34
Vocational/2 Credits						
Disability	Unreportable*					
Alternate Assessment						

■ Novice
■ Apprentice
■ Proficient
■ Distinguished

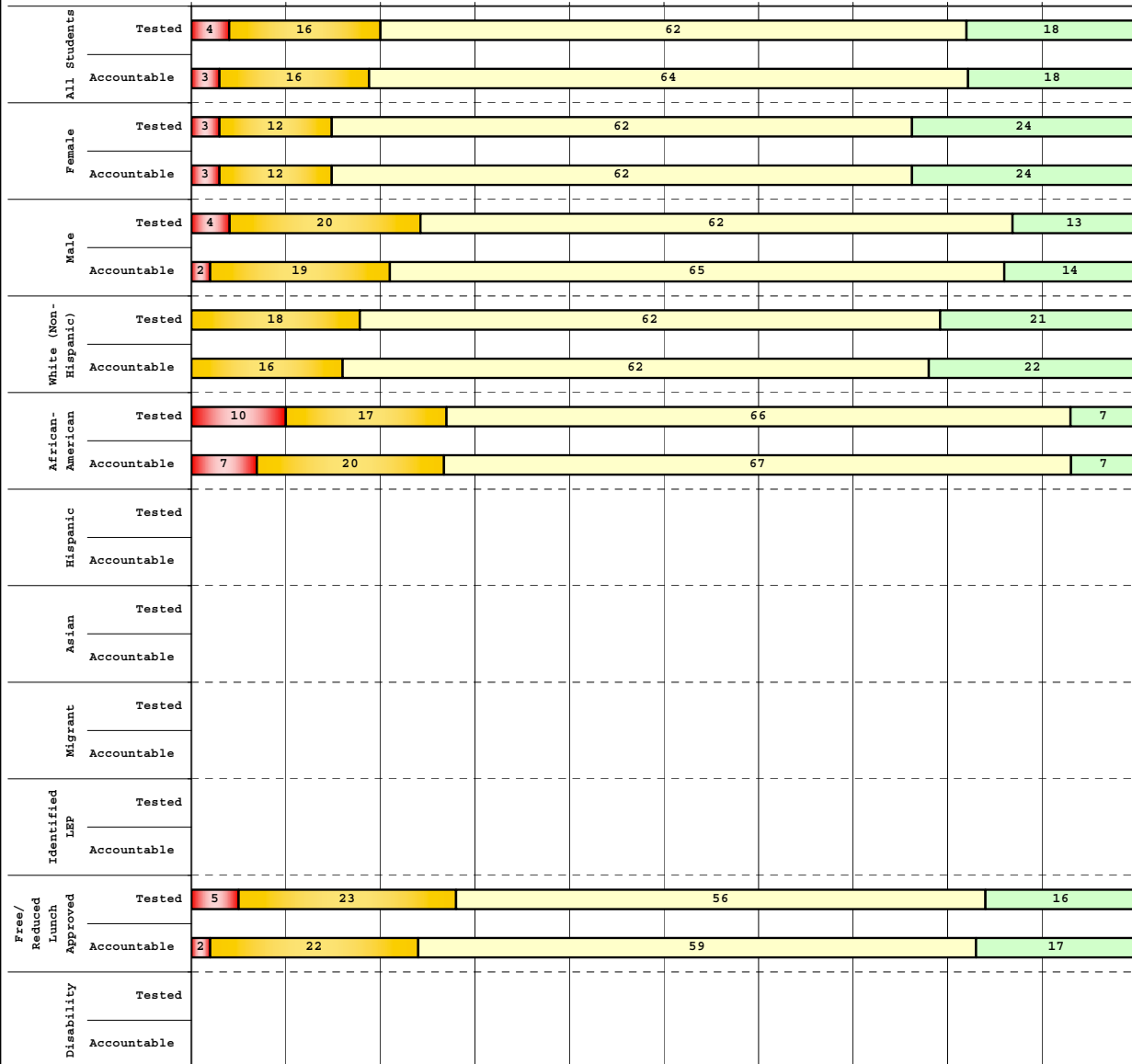
Percentage may not sum to 100% due to rounding. 'Unreportable\*' indicates subpopulations with fewer than 10 students or subpopulations where all students score at the same performance level.



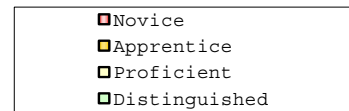
2008-2009  
**INTERIM PERFORMANCE REPORT**  
**READING DISAGGREGATION**  
**Performance Level Percents**

School: LIBERTY ELEMENTARY  
 District: Fayette County  
 Code: 165057  
 Grade: 05

0% 10% 20% 30% 40% 50% 60% 70% 80% 90% 100%



Category	N%	A%	P%	D%	P+D%
<b>Tested Students</b>					
Total	4	16	62	18	79.75
Female	3	12	62	24	85.29
Male	4	20	62	13	75.56
White (Non-Hispanic)	0	18	62	21	82.05
African-American	10	17	66	7	72.41
Hispanic	Unreportable*				
Asian	Unreportable*				
Other	Unreportable*				
Title I					
Migrant					
Identified LEP	Unreportable*				
Extended Sch Services					
Gifted/Talented	Unreportable*				
F/R Lunch Approved	5	23	56	16	72.09
Vocational/2 Credits					
Disability	Unreportable*				
Alternate Assessment					
<b>NCLB Accountable Students</b>					
Total	3	16	64	18	81.82
Female	3	12	62	24	85.29
Male	2	19	65	14	79.07
White (Non-Hispanic)	0	16	62	22	83.78
African-American	7	20	67	7	73.33
Hispanic	Unreportable*				
Asian	Unreportable*				
Other	Unreportable*				
Title I					
Migrant					
Identified LEP	Unreportable*				
Extended Sch Services					
Gifted/Talented	Unreportable*				
F/R Lunch Approved	2	22	59	17	75.61
Vocational/2 Credits					
Disability	Unreportable*				
Alternate Assessment					



Percentage may not sum to 100% due to rounding. 'Unreportable\*' indicates subpopulations with fewer than 10 students or subpopulations where all students score at the same performance level.



**2008-2009**  
**INTERIM PERFORMANCE REPORT**  
**READING CORE CONTENT**

School: LIBERTY ELEMENTARY  
 District: Fayette County  
 Code: 165057  
 Grade: 03

	No. Items	No. Observations	SCHOOL								Std. Err.	No. Observations	STATE								School -State Mean
			B	0	1	2	3	4	Mean	B			0	1	2	3	4	Mean			
<b>OPEN RESPONSE</b>																					
2.0.x - Developing Understanding	2	194	0	3	19	39	26	13	2.3	0.1	100,212	0	10	30	44	14	2	1.7	0.6		
3.0.x - Interpreting Text	2	194	0	3	19	39	26	13	2.3	0.1	100,212	0	10	30	44	14	2	1.7	0.6		
<b>MULTIPLE CHOICE</b>																					
1.0.x - Forming a Foundation	32	757	88	12	0				0.88	0.01	392,589	83	17	0				0.83	0.05		
2.0.x - Developing Understanding	89	1,926	85	15	0				0.85	0.01	993,477	80	20	0				0.80	0.05		
3.0.x - Interpreting Text	31	912	83	17	0				0.83	0.01	468,115	77	23	0				0.77	0.06		
5.0.x - Critical Stance	15	395	86	13	0				0.86	0.02	208,359	79	21	0				0.79	0.07		



**2008-2009**  
**INTERIM PERFORMANCE REPORT**  
**READING CORE CONTENT**

School: LIBERTY ELEMENTARY  
 District: Fayette County  
 Code: 165057  
 Grade: 04

	No. Items	No. Observations	SCHOOL								Std. Err.	No. Observations	STATE								School -State Mean
			B	0	1	2	3	4	Mean	B			0	1	2	3	4	Mean			
<b>OPEN RESPONSE</b>																					
2.0.x - Developing Understanding	5	145	0	2	12	39	30	16	2.5	0.1	81,849	0	3	24	52	18	3	1.9	0.6		
3.0.x - Interpreting Text	6	231	0	3	12	39	31	15	2.4	0.1	131,199	0	4	22	45	23	5	2.0	0.4		
<b>MULTIPLE CHOICE</b>																					
1.0.x - Forming a Foundation	34	711	75	25	0				0.75	0.02	401,452	72	28	0				0.71	0.04		
2.0.x - Developing Understanding	76	1,551	76	24	0				0.76	0.01	868,422	73	27	0				0.73	0.03		
3.0.x - Interpreting Text	29	481	81	19	0				0.81	0.02	278,648	79	21	0				0.79	0.02		
5.0.x - Critical Stance	9	273	83	17	1				0.83	0.03	155,704	74	26	0				0.74	0.09		



**2008-2009**  
**INTERIM PERFORMANCE REPORT**  
**READING CORE CONTENT**

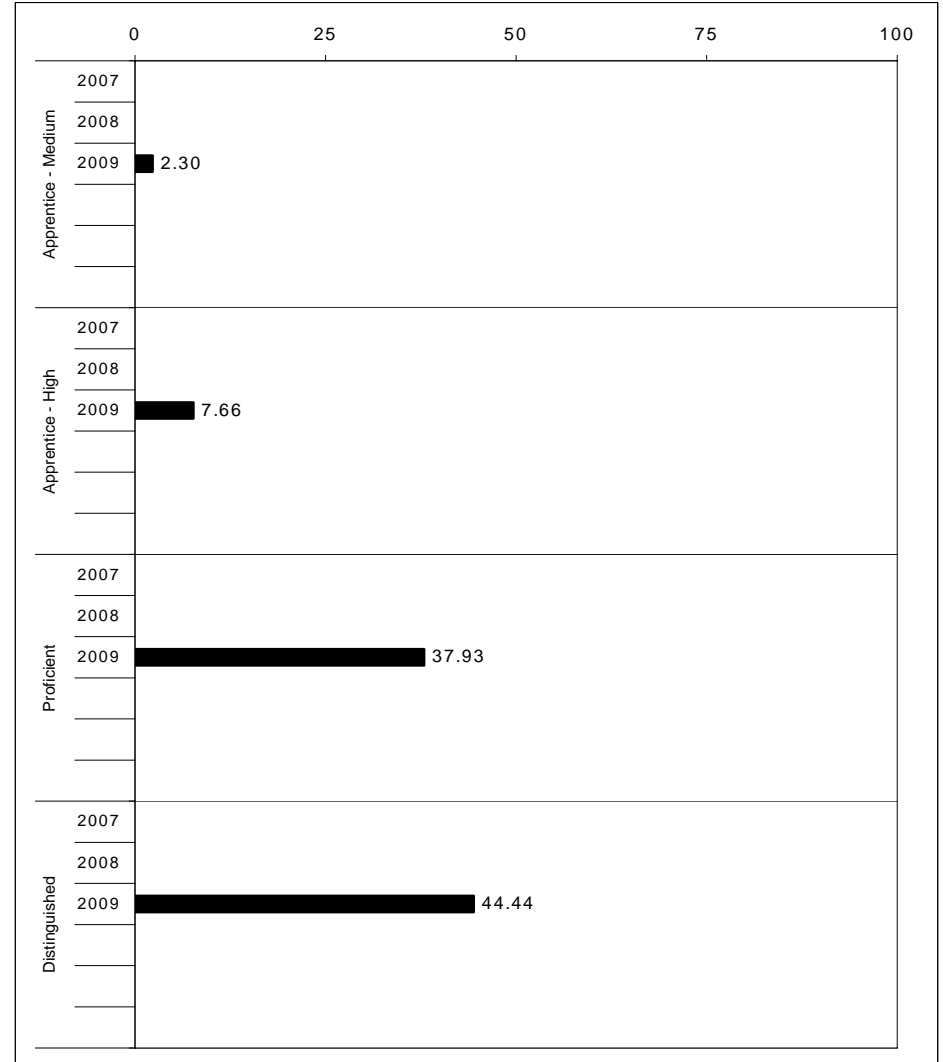
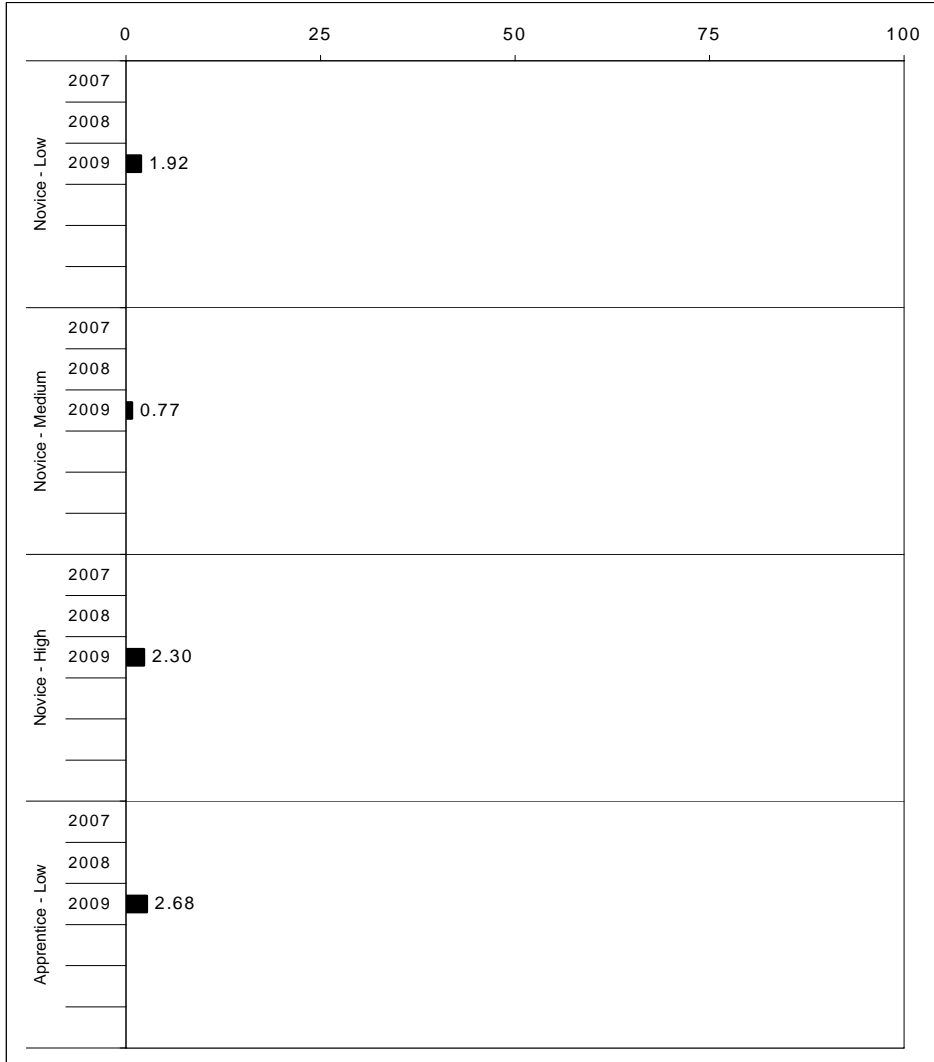
School: LIBERTY ELEMENTARY  
 District: Fayette County  
 Code: 165057  
 Grade: 05

	No. Items	No. Observations	SCHOOL							Mean	Std. Err.	No. Observations	STATE							Mean	School -State Mean
			B	0	1	2	3	4	B				0	1	2	3	4				
<b>OPEN RESPONSE</b>																					
2.0.x - Developing Understanding	6	138	0	2	15	42	31	9	2.3	0.1	89,507	0	5	23	48	20	5	2.0	0.3		
3.0.x - Interpreting Text	6	205	0	3	11	47	31	7	2.3	0.1	130,403	0	5	21	50	19	4	2.0	0.3		
<b>MULTIPLE CHOICE</b>																					
1.0.x - Forming a Foundation	28	414	73	27	0				0.72	0.02	268,187	74	26	0				0.74	-0.02		
2.0.x - Developing Understanding	71	1,300	81	19	0				0.81	0.01	823,068	80	20	0				0.80	0.01		
3.0.x - Interpreting Text	27	524	84	16	0				0.84	0.02	341,653	81	19	0				0.81	0.03		
5.0.x - Critical Stance	17	463	79	21	0				0.79	0.02	300,671	75	25	0				0.75	0.04		



2008-2009  
**INTERIM PERFORMANCE REPORT**  
**MATHEMATICS TREND DATA**  
**Performance Level Percents**

School: LIBERTY ELEMENTARY  
 District: Fayette County  
 Code: 165057  
 Grade: ELEMENTARY



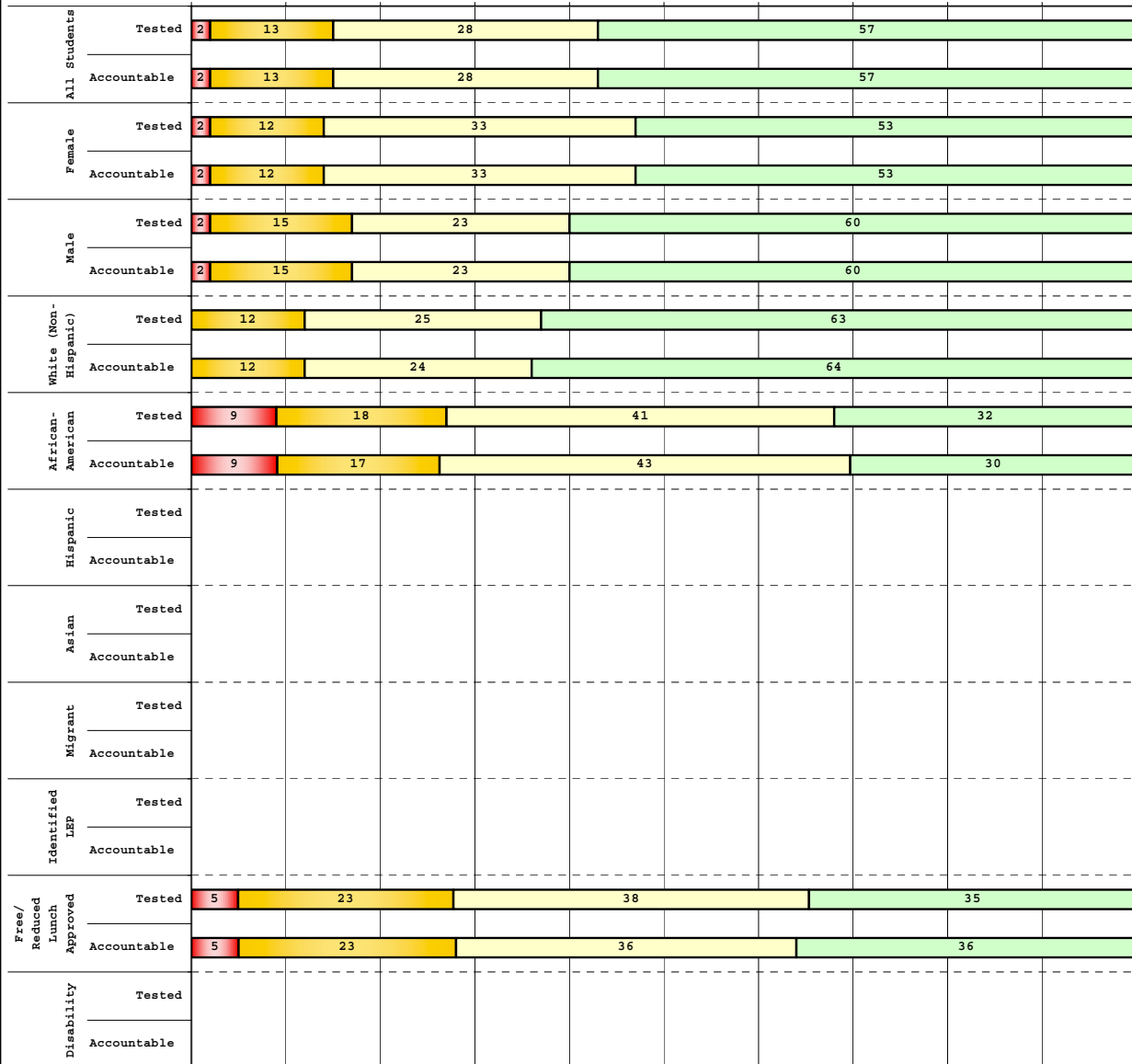
The horizontal bar represents the percent of students scoring at a performance level within a particular year. Percentages may not sum to 100% due to rounding.



**2008-2009**  
**INTERIM PERFORMANCE REPORT**  
**MATHEMATICS DISAGGREGATION**  
**Performance Level Percents**

School: LIBERTY ELEMENTARY  
 District: Fayette County  
 Code: 165057  
 Grade: 03

0% 10% 20% 30% 40% 50% 60% 70% 80% 90% 100%

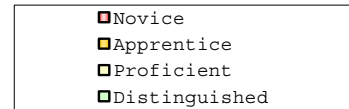


**Tested Students**

	N%	A%	P%	D%	P+D%
Total	2	13	28	57	84.54
Female	2	12	33	53	85.71
Male	2	15	23	60	83.33
White (Non-Hispanic)	0	12	25	63	88.33
African-American	9	18	41	32	72.73
Hispanic	Unreportable*				
Asian	Unreportable*				
Other	Unreportable*				
Title I	Unreportable*				
Migrant	Unreportable*				
Identified LEP	Unreportable*				
Extended Sch Services	Unreportable*				
Gifted/Talented	Unreportable*				
F/R Lunch Approved	5	23	38	35	72.50
Vocational/2 Credits	Unreportable*				
Disability	Unreportable*				
Alternate Assessment	Unreportable*				

**NCLB Accountable Students**

	N%	A%	P%	D%	P+D%
Total	2	13	28	57	84.54
Female	2	12	33	53	85.71
Male	2	15	23	60	83.33
White (Non-Hispanic)	0	12	24	64	88.14
African-American	9	17	43	30	73.91
Hispanic	Unreportable*				
Asian	Unreportable*				
Other	Unreportable*				
Title I	Unreportable*				
Migrant	Unreportable*				
Identified LEP	Unreportable*				
Extended Sch Services	Unreportable*				
Gifted/Talented	Unreportable*				
F/R Lunch Approved	5	23	36	36	71.79
Vocational/2 Credits	Unreportable*				
Disability	Unreportable*				
Alternate Assessment	Unreportable*				



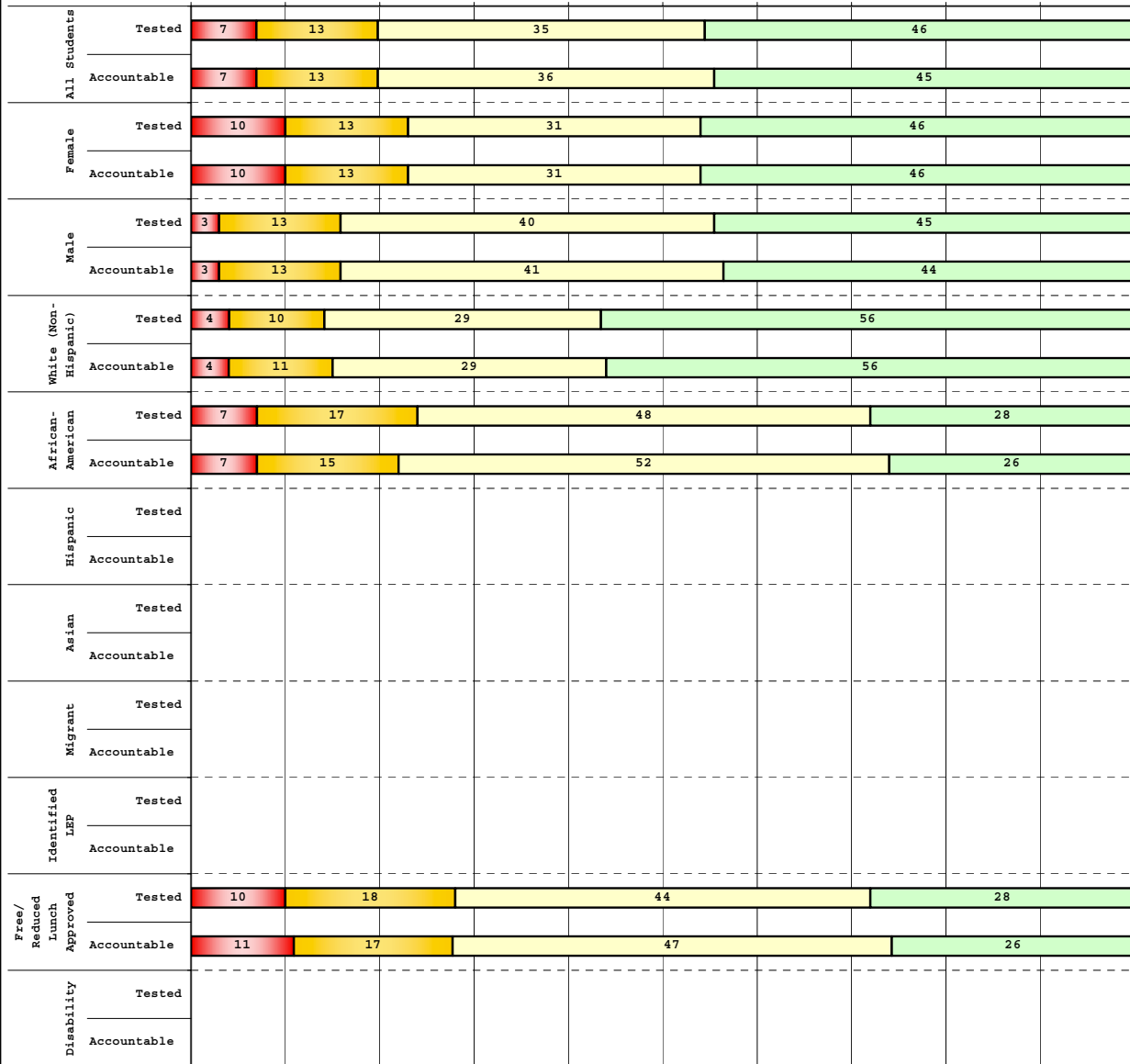
Percentage may not sum to 100% due to rounding. 'Unreportable\*' indicates subpopulations with fewer than 10 students or subpopulations where all students score at the same performance level.



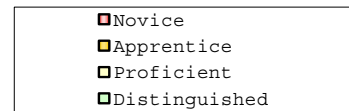
2008-2009  
**INTERIM PERFORMANCE REPORT**  
**MATHEMATICS DISAGGREGATION**  
**Performance Level Percents**

School: LIBERTY ELEMENTARY  
 District: Fayette County  
 Code: 165057  
 Grade: 04

0% 10% 20% 30% 40% 50% 60% 70% 80% 90% 100%



Category	N%	A%	P%	D%	P+D%
<b>Tested Students</b>					
Total	7	13	35	46	80.43
Female	10	13	31	46	76.92
Male	3	13	40	45	85.00
White (Non-Hispanic)	4	10	29	56	85.42
African-American	7	17	48	28	75.86
Hispanic	Unreportable*				
Asian	Unreportable*				
Other	Unreportable*				
Title I					
Migrant					
Identified LEP	Unreportable*				
Extended Sch Services					
Gifted/Talented	Unreportable*				
F/R Lunch Approved	10	18	44	28	72.00
Vocational/2 Credits					
Disability	Unreportable*				
Alternate Assessment					
<b>NCLB Accountable Students</b>					
Total	7	13	36	45	80.46
Female	10	13	31	46	77.08
Male	3	13	41	44	84.62
White (Non-Hispanic)	4	11	29	56	84.44
African-American	7	15	52	26	77.78
Hispanic	Unreportable*				
Asian	Unreportable*				
Other	Unreportable*				
Title I					
Migrant					
Identified LEP	Unreportable*				
Extended Sch Services					
Gifted/Talented	Unreportable*				
F/R Lunch Approved	11	17	47	26	72.34
Vocational/2 Credits					
Disability	Unreportable*				
Alternate Assessment					



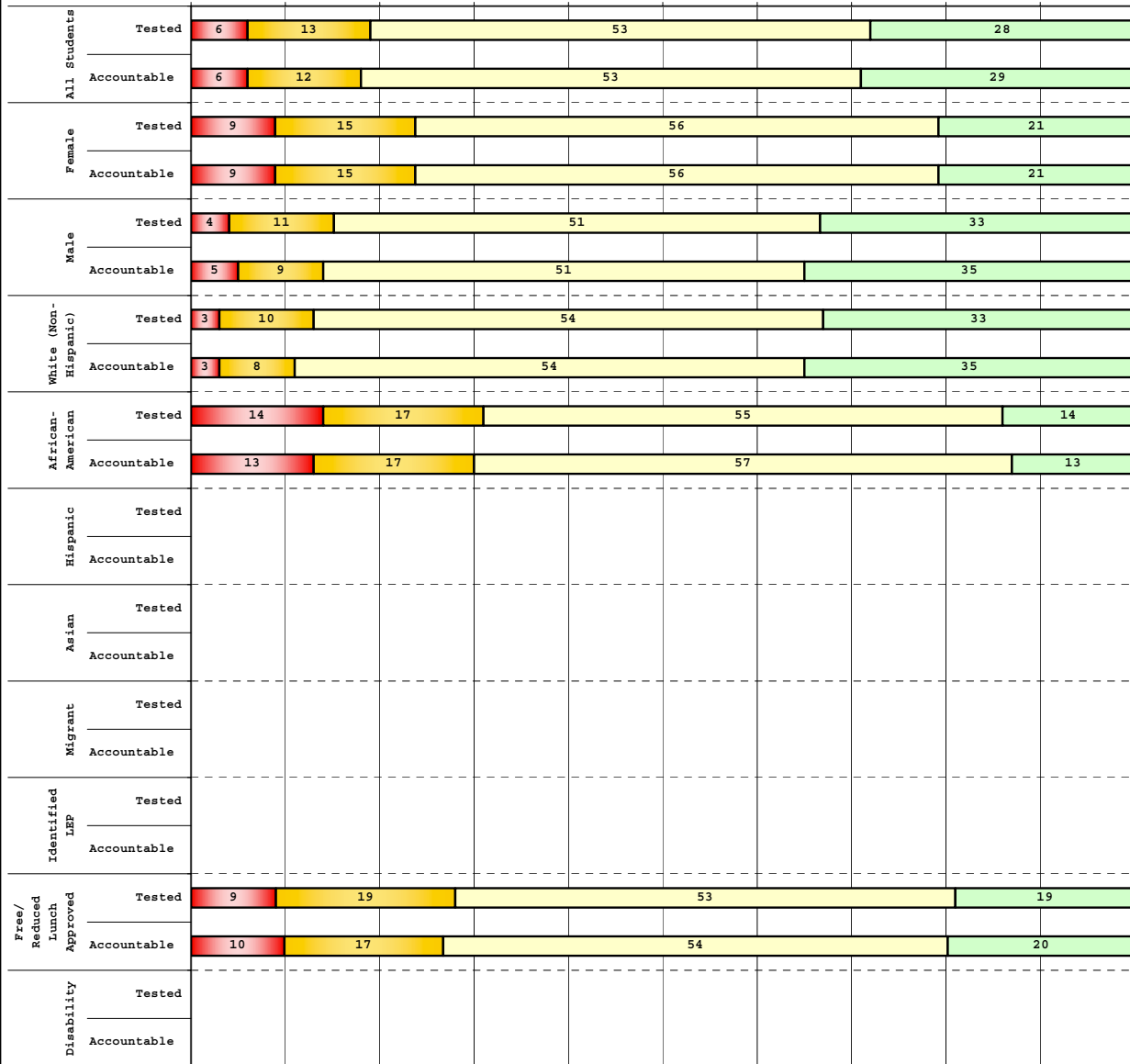
Percentage may not sum to 100% due to rounding. 'Unreportable\*' indicates subpopulations with fewer than 10 students or subpopulations where all students score at the same performance level.



2008-2009  
**INTERIM PERFORMANCE REPORT**  
**MATHEMATICS DISAGGREGATION**  
**Performance Level Percents**

School: LIBERTY ELEMENTARY  
 District: Fayette County  
 Code: 165057  
 Grade: 05

0% 10% 20% 30% 40% 50% 60% 70% 80% 90% 100%



**Tested Students**

	N%	A%	P%	D%	P+D%
Total	6	13	53	28	81.01
Female	9	15	56	21	76.47
Male	4	11	51	33	84.44
White (Non-Hispanic)	3	10	54	33	87.18
African-American	14	17	55	14	68.97
Hispanic	Unreportable*				
Asian	Unreportable*				
Other	Unreportable*				
Title I					
Migrant					
Identified LEP	Unreportable*				
Extended Sch Services					
Gifted/Talented	Unreportable*				
F/R Lunch Approved	9	19	53	19	72.09
Vocational/2 Credits					
Disability	Unreportable*				
Alternate Assessment					

**NCLB Accountable Students**

	N%	A%	P%	D%	P+D%
Total	6	12	53	29	81.82
Female	9	15	56	21	76.47
Male	5	9	51	35	86.05
White (Non-Hispanic)	3	8	54	35	89.19
African-American	13	17	57	13	70.00
Hispanic	Unreportable*				
Asian	Unreportable*				
Other	Unreportable*				
Title I					
Migrant					
Identified LEP	Unreportable*				
Extended Sch Services					
Gifted/Talented	Unreportable*				
F/R Lunch Approved	10	17	54	20	73.17
Vocational/2 Credits					
Disability	Unreportable*				
Alternate Assessment					

<span style="color: red;">■</span> Novice
<span style="color: orange;">■</span> Apprentice
<span style="color: yellow;">■</span> Proficient
<span style="color: green;">■</span> Distinguished

Percentage may not sum to 100% due to rounding. 'Unreportable\*' indicates subpopulations with fewer than 10 students or subpopulations where all students score at the same performance level.



**2008-2009**  
**INTERIM PERFORMANCE REPORT**  
**MATHEMATICS CORE CONTENT**

School: LIBERTY ELEMENTARY  
 District: Fayette County  
 Code: 165057  
 Grade: 03

	No. Items	No. Observations	SCHOOL								STATE								School -State Mean
			Percents						Mean	Std. Err.	Percents						Mean		
			B	0	1	2	3	4					No. Observations	B	0	1		2	3
<b>OPEN RESPONSE</b>																			
1.x.x - Number Prop Oper	5	242	0	12	24	31	17	14	2.0	0.1	125,243	0	21	35	26	10	8	1.5	0.5
2.x.x - Measurement	1	16	0	19	6	0	19	56	2.9	0.4	8,325	0	25	5	30	14	25	2.1	0.8
3.x.x - Geometry	2	32	0	0	19	31	16	34	2.7	0.2	16,777	0	8	24	35	13	20	2.1	0.6
4.x.x - Data Analysis & Probabilit	1	97	0	2	8	7	13	69	3.4	0.1	50,106	0	9	13	19	27	32	2.6	0.8
5.x.x - Algebraic Thinking	2	114	0	2	10	6	19	63	3.3	0.1	58,404	0	9	14	19	28	31	2.6	0.7
<b>MULTIPLE CHOICE</b>																			
1.x.x - Number Prop Oper	32	1,567	Correct	Incorrect	Omit/Mult				0.81	0.01	810,106	Correct	Incorrect	Omit/Mult				0.74	0.07
2.x.x - Measurement	7	356	81	19	0				0.87	0.02	183,647	81	18	0				0.81	0.06
3.x.x - Geometry	18	776	89	11	0				0.89	0.01	400,848	85	15	0				0.85	0.04
4.x.x - Data Analysis & Probabilit	8	371	75	25	0				0.75	0.02	192,126	69	31	0				0.69	0.06
5.x.x - Algebraic Thinking	11	422	83	16	0				0.83	0.02	217,089	78	22	0				0.78	0.05



**2008-2009**  
**INTERIM PERFORMANCE REPORT**  
**MATHEMATICS CORE CONTENT**

School: LIBERTY ELEMENTARY  
 District: Fayette County  
 Code: 165057  
 Grade: 04

	No. Items	No. Observations	SCHOOL								STATE								School -State Mean
			Percents						Mean	Std. Err.	Percents						Mean		
			B	0	1	2	3	4					No. Observations	B	0	1		2	3
<b>OPEN RESPONSE</b>																			
1.x.x - Number Prop Oper	4	135	1	14	21	33	20	11	1.9	0.1	73,656	0	17	24	29	19	12	1.9	0.0
2.x.x - Measurement	1	15	0	47	27	7	13	7	1.1	0.4	8,195	0	43	13	10	20	13	1.5	-0.4
3.x.x - Geometry	2	100	0	8	16	12	24	40	2.7	0.1	57,352	0	11	20	17	19	33	2.4	0.3
4.x.x - Data Analysis & Probabilit	1	13	0	8	38	0	46	8	2.1	0.3	8,152	0	5	36	29	23	6	1.9	0.2
5.x.x - Algebraic Thinking	2	100	1	5	27	26	28	13	2.2	0.1	57,508	0	5	27	32	25	11	2.1	0.1
<b>MULTIPLE CHOICE</b>																			
1.x.x - Number Prop Oper	31	1,170	74	25	Omit/Mult			0.74	0.01	664,194	67	33	Omit/Mult			0.67	0.07		
2.x.x - Measurement	7	250	68	32	Omit/Mult			0.68	0.03	139,170	62	38	Omit/Mult			0.62	0.06		
3.x.x - Geometry	14	493	81	18	Omit/Mult			0.81	0.02	278,460	77	23	Omit/Mult			0.77	0.04		
4.x.x - Data Analysis & Probabilit	12	534	80	19	Omit/Mult			0.80	0.02	303,394	71	29	Omit/Mult			0.71	0.09		
5.x.x - Algebraic Thinking	11	452	75	24	Omit/Mult			0.75	0.02	253,829	69	31	Omit/Mult			0.69	0.06		



**2008-2009**  
**INTERIM PERFORMANCE REPORT**  
**MATHEMATICS CORE CONTENT**

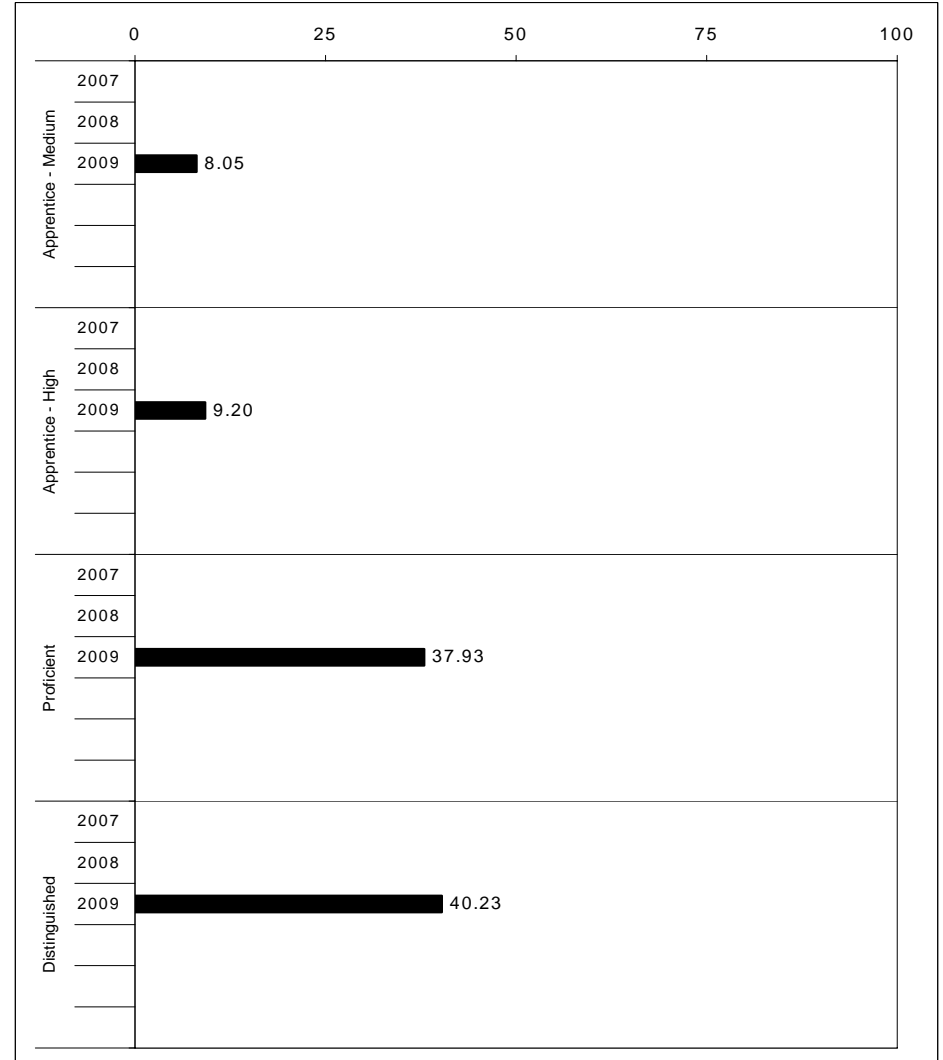
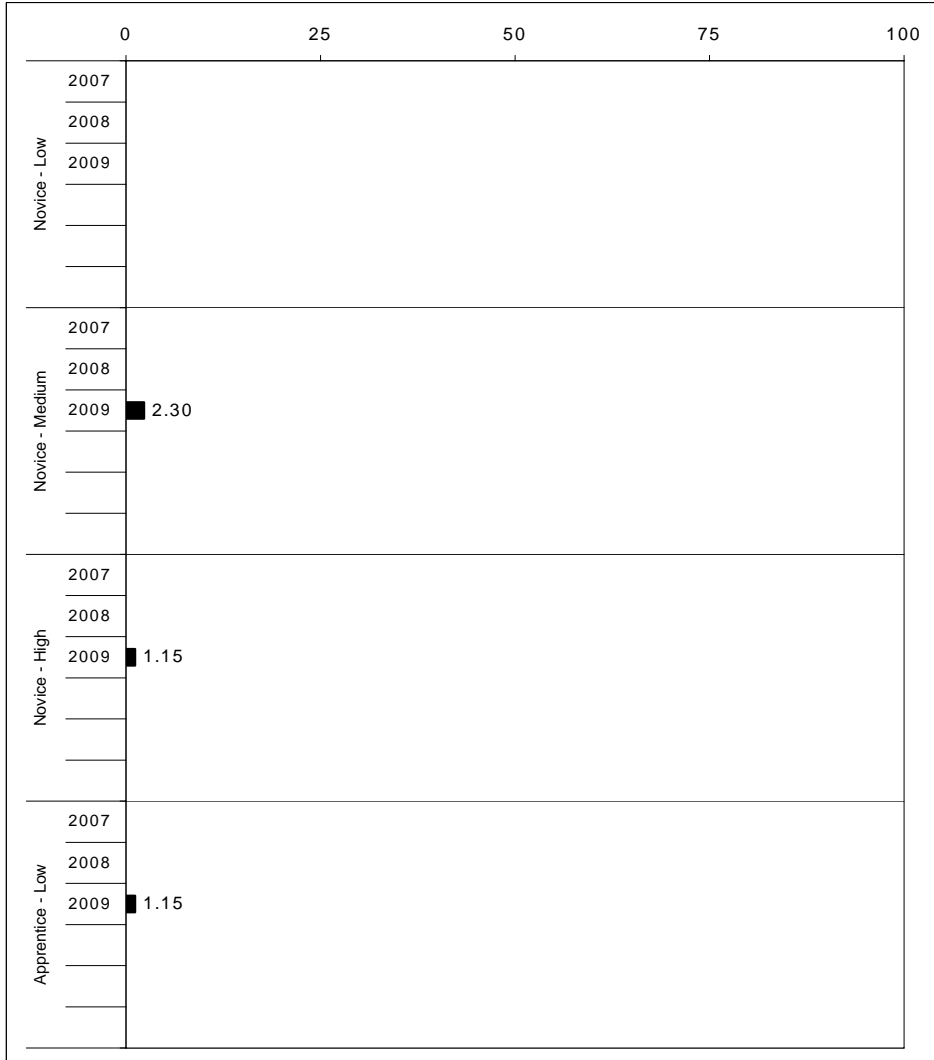
School: LIBERTY ELEMENTARY  
 District: Fayette County  
 Code: 165057  
 Grade: 05

	No. Items	No. Observations	SCHOOL								STATE								School -State Mean
			Percents						Mean	Std. Err.	Percents						Mean		
			B	0	1	2	3	4					No. Observations	B	0	1		2	3
<b>OPEN RESPONSE</b>																			
1.x.x - Number Prop Oper	4	113	0	4	11	17	25	44	3.0	0.1	73,199	0	8	20	18	25	29	2.5	0.5
2.x.x - Measurement	1	16	0	25	38	6	6	25	1.7	0.3	8,380	0	37	30	13	10	11	1.3	0.4
3.x.x - Geometry	2	87	0	2	20	20	36	23	2.6	0.1	56,900	0	6	24	30	26	14	2.2	0.4
4.x.x - Data Analysis & Probabilit	1	76	0	11	18	16	20	36	2.5	0.2	48,828	0	15	18	15	17	35	2.4	0.1
5.x.x - Algebraic Thinking	1	12	0	25	17	17	17	25	2.0	0.4	8,005	0	13	15	20	17	35	2.5	-0.5
<b>MULTIPLE CHOICE</b>																			
1.x.x - Number Prop Oper	29	1,004	Correct	Incorrect	Omit/Mult				0.65	0.02	643,144	Correct	Incorrect	Omit/Mult				0.63	0.02
2.x.x - Measurement	9	240	65	35	0				0.59	0.03	154,489	63	37	0				0.62	-0.03
3.x.x - Geometry	14	429	59	41	0				0.85	0.02	276,516	78	22	0				0.78	0.07
4.x.x - Data Analysis & Probabilit	11	391	85	15	0				0.68	0.02	252,212	64	36	0				0.64	0.04
5.x.x - Algebraic Thinking	10	380	68	33	0				0.66	0.02	244,140	64	36	0				0.65	0.01
			66	34	0							65	35	0					



2008-2009  
**INTERIM PERFORMANCE REPORT**  
**SCIENCE TREND DATA**  
**Performance Level Percents**

School: LIBERTY ELEMENTARY  
 District: Fayette County  
 Code: 165057  
 Grade: 04

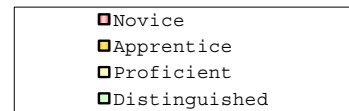
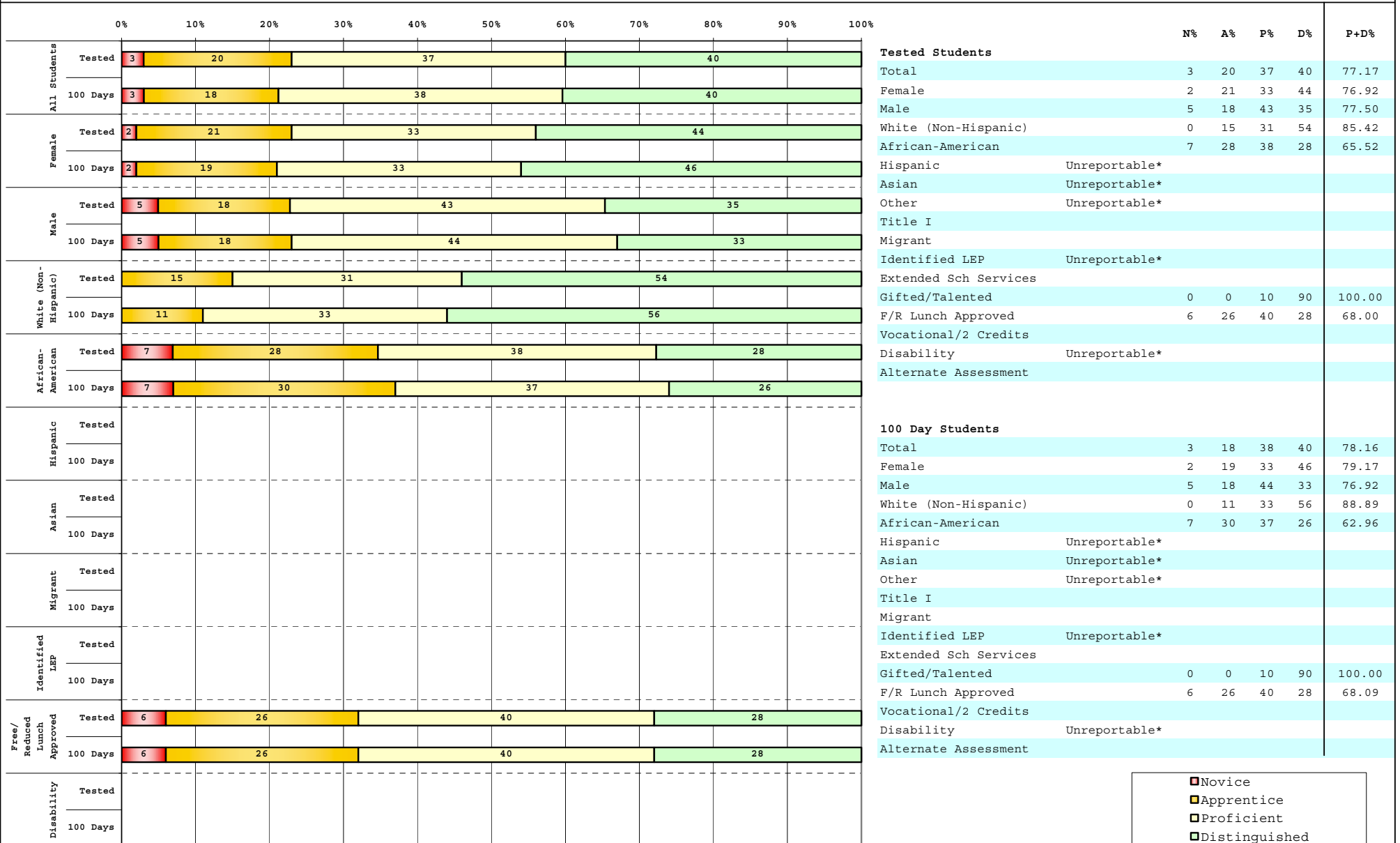


The horizontal bar represents the percent of students scoring at a performance level within a particular year. Percentages may not sum to 100% due to rounding.



2008-2009  
**INTERIM PERFORMANCE REPORT**  
**SCIENCE DISAGGREGATION**  
**Performance Level Percents**

School: LIBERTY ELEMENTARY  
 District: Fayette County  
 Code: 165057  
 Grade: 04



Percentage may not sum to 100% due to rounding. 'Unreportable\*' indicates subpopulations with fewer than 10 students or subpopulations where all students score at the same performance level.



**2008-2009**  
**INTERIM PERFORMANCE REPORT**  
**SCIENCE CORE CONTENT**

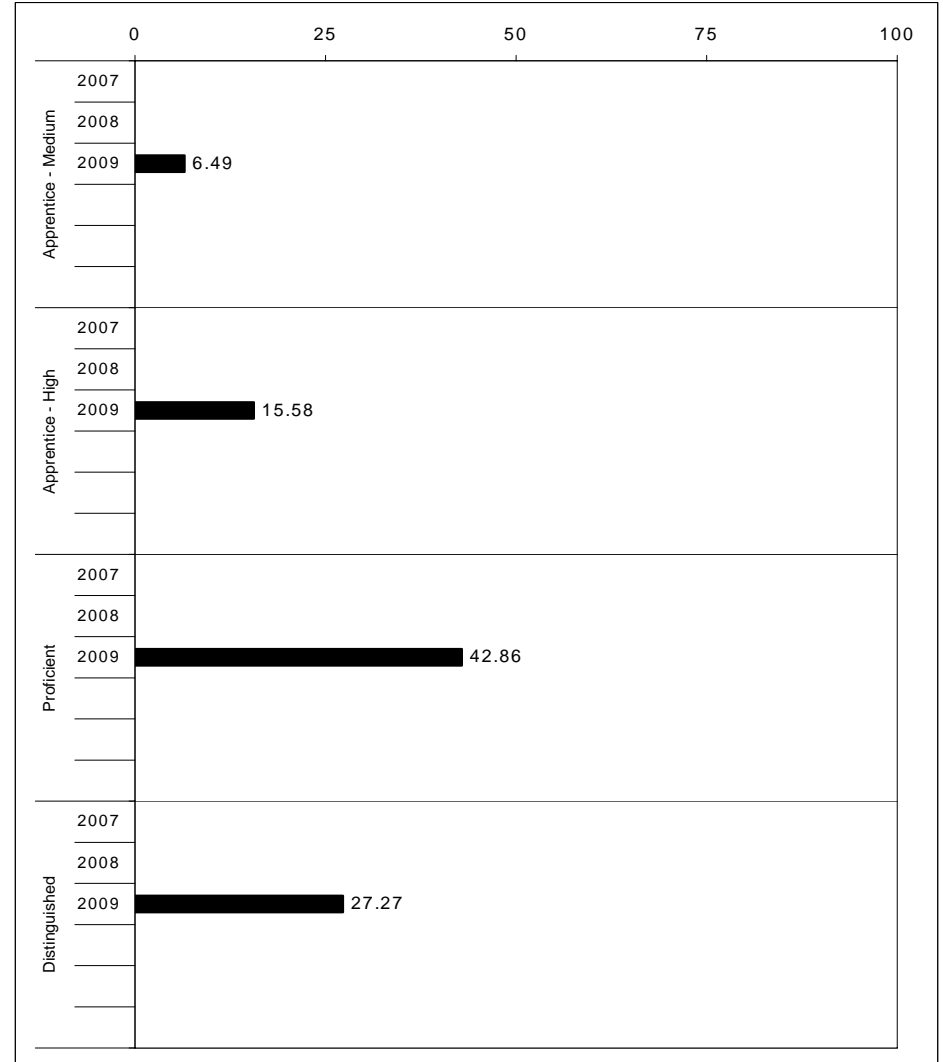
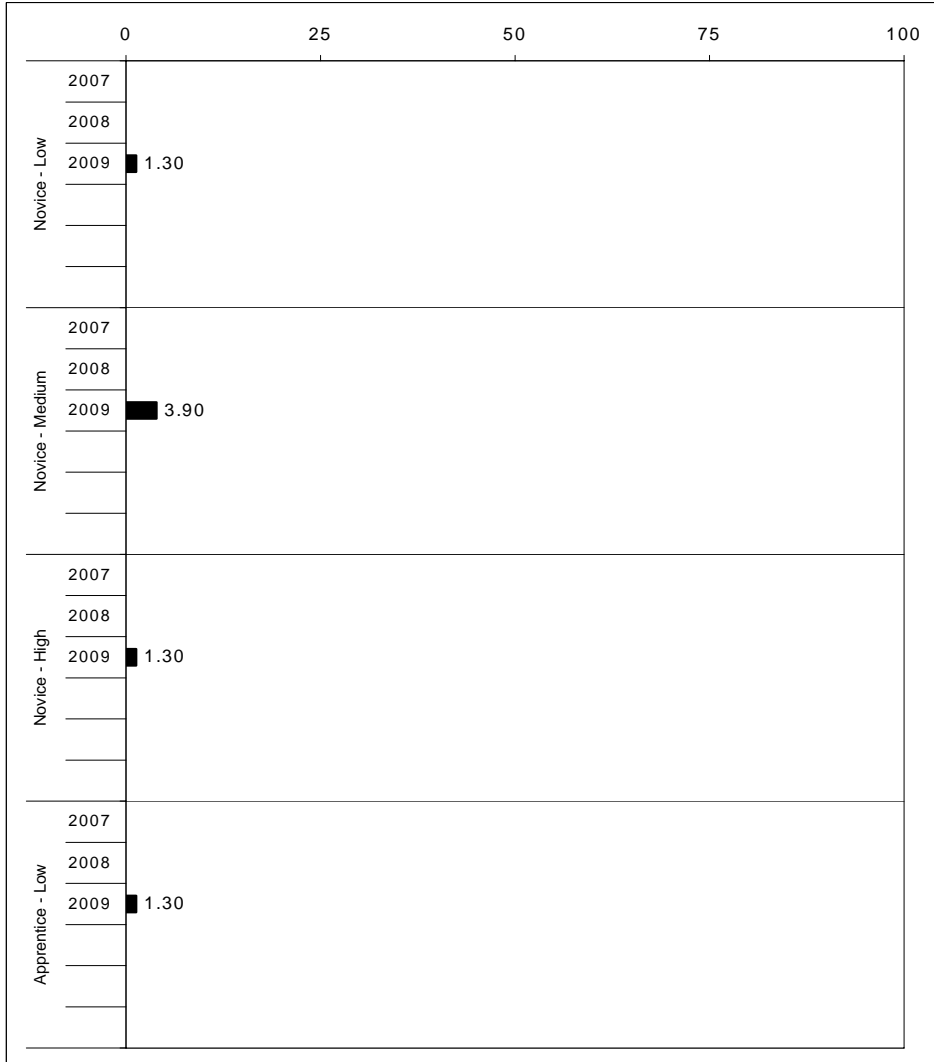
School: LIBERTY ELEMENTARY  
 District: Fayette County  
 Code: 165057  
 Grade: 04

	No. Items	No. Observations	SCHOOL								Std. Err.	No. Observations	STATE								School -State Mean
			B	0	1	2	3	4	Mean	B			0	1	2	3	4	Mean			
<b>OPEN RESPONSE</b>																					
1.x.x - Physical Science	2	26	0	12	23	38	23	4	1.8	0.2	16,337	0	17	19	42	17	5	1.7	0.1		
2.x.x - Earth Space Science	3	117	0	12	21	36	26	5	1.9	0.1	65,658	0	12	22	35	26	4	1.9	0.0		
3.x.x - Biological Science	3	118	0	2	7	31	49	12	2.6	0.1	65,506	0	2	11	33	44	9	2.5	0.1		
4.x.x - Unifying Concepts	2	100	0	1	14	22	37	26	2.7	0.1	57,508	0	3	13	33	35	15	2.5	0.2		
<b>MULTIPLE CHOICE</b>																					
1.x.x - Physical Science	18	696	87	13	0				0.87	0.01	393,336	82	18	0				0.81	0.06		
2.x.x - Earth Space Science	19	709	73	27	0				0.73	0.02	401,488	71	29	0				0.71	0.02		
3.x.x - Biological Science	22	829	79	21	0				0.79	0.01	467,138	78	22	0				0.78	0.01		
4.x.x - Unifying Concepts	14	563	91	9	0				0.91	0.02	319,534	84	15	0				0.84	0.07		



2008-2009  
**INTERIM PERFORMANCE REPORT**  
**SOCIAL STUDIES TREND DATA**  
**Performance Level Percents**

School: LIBERTY ELEMENTARY  
 District: Fayette County  
 Code: 165057  
 Grade: 05



The horizontal bar represents the percent of students scoring at a performance level within a particular year. Percentages may not sum to 100% due to rounding.



2008-2009  
**INTERIM PERFORMANCE REPORT**  
**SOCIAL STUDIES DISAGGREGATION**  
**Performance Level Percents**

School: LIBERTY ELEMENTARY  
 District: Fayette County  
 Code: 165057  
 Grade: 05

		0%	10%	20%	30%	40%	50%	60%	70%	80%	90%	100%	N%	A%	P%	D%	P+D%	
All Students	Tested	6	23	43	28								<b>Tested Students</b>					
	100 Days	6	23	43	27								Total	6	23	43	28	70.89
Female	Tested	6	29	41	24								Female	6	29	41	24	64.71
	100 Days	6	29	41	24								Male	7	18	44	31	75.56
Male	Tested	7	18	44	31								White (Non-Hispanic)	3	21	38	38	76.92
	100 Days	7	19	44	30								African-American	14	31	45	10	55.17
White (Non-Hispanic)	Tested	3	21	38	38								Hispanic	Unreportable*				
	100 Days	3	22	38	38								Asian	Unreportable*				
African-American	Tested	14	31	45	10								Other	Unreportable*				
	100 Days	13	33	43	10								Title I					
Hispanic	Tested												Migrant					
	100 Days												Identified LEP	Unreportable*				
Asian	Tested												Extended Sch Services					
	100 Days												Gifted/Talented	Unreportable*				
Migrant	Tested												F/R Lunch Approved	9	30	40	21	60.47
	100 Days												Vocational/2 Credits					
Identified LEP	Tested												Disability	Unreportable*				
	100 Days												Alternate Assessment					
Free/Reduced Lunch Approved	Tested	9	30	40	21								<b>100 Day Students</b>					
	100 Days	10	29	39	22								Total	6	23	43	27	70.13
Disability	Tested												Female	6	29	41	24	64.71
	100 Days												Male	7	19	44	30	74.42
													White (Non-Hispanic)	3	22	38	38	75.68
													African-American	13	33	43	10	53.33
													Hispanic	Unreportable*				
													Asian	Unreportable*				
													Other	Unreportable*				
													Title I					
													Migrant					
													Identified LEP	Unreportable*				
													Extended Sch Services					
													Gifted/Talented	Unreportable*				
													F/R Lunch Approved	10	29	39	22	60.98
													Vocational/2 Credits					
													Disability	Unreportable*				
													Alternate Assessment					

■	Novice
■	Apprentice
■	Proficient
■	Distinguished

Percentage may not sum to 100% due to rounding. 'Unreportable\*' indicates subpopulations with fewer than 10 students or subpopulations where all students score at the same performance level.



**2008-2009**  
**INTERIM PERFORMANCE REPORT**  
**SOCIAL STUDIES CORE CONTENT**

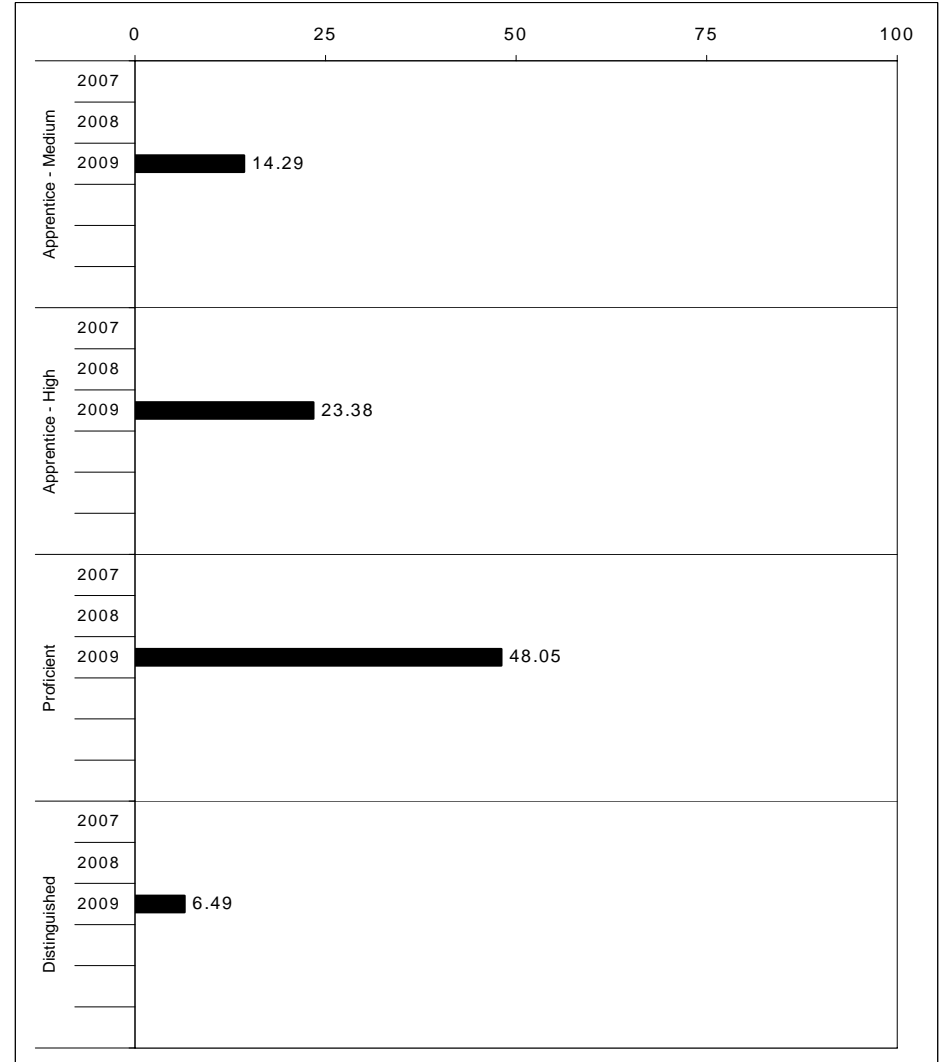
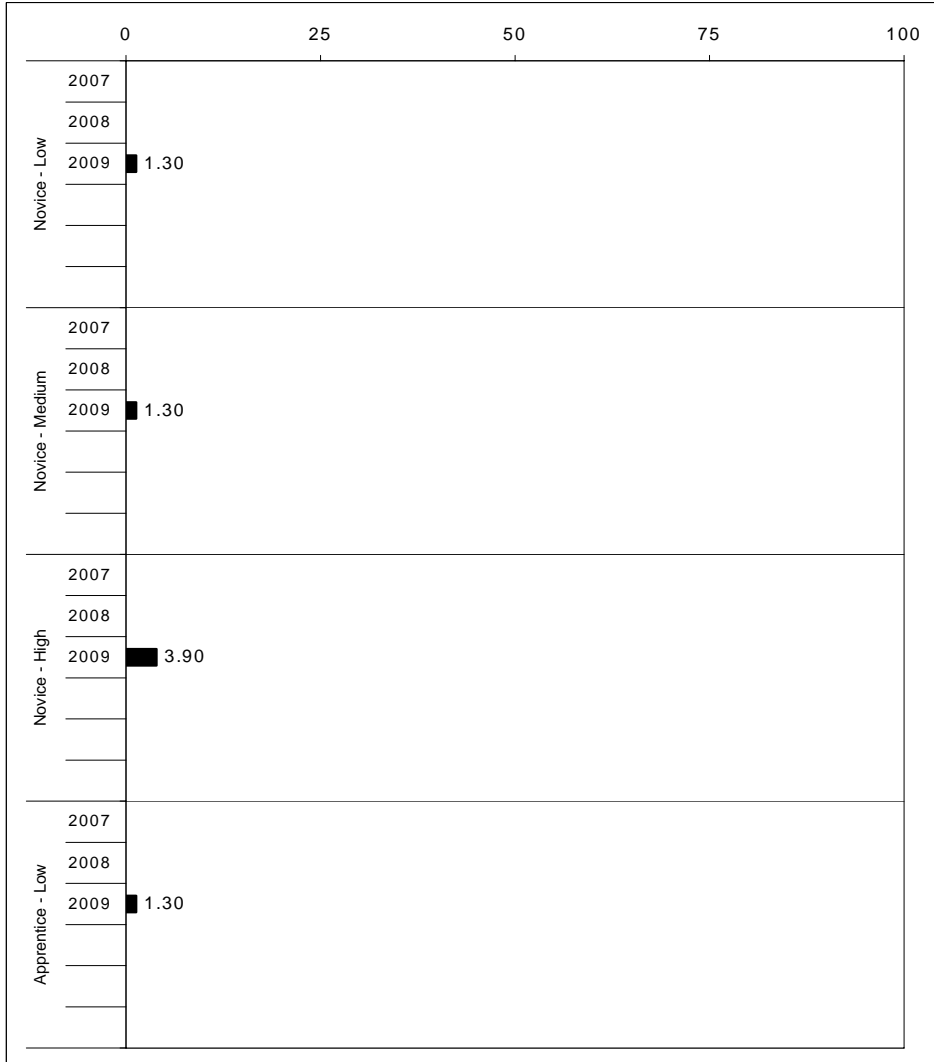
School: LIBERTY ELEMENTARY  
 District: Fayette County  
 Code: 165057  
 Grade: 05

	No. Items	No. Observations	SCHOOL								Std. Err.	No. Observations	STATE								School -State Mean
			B	0	1	2	3	4	Mean	B			0	1	2	3	4	Mean			
<b>OPEN RESPONSE</b>																					
1.x.x - Government & Civics	2	89	0	0	19	51	25	6	2.2	0.1	56,903	0	5	37	45	10	2	1.7	0.5		
2.x.x - Cultures & Societies	1	10	0	0	0	60	40	0	2.4	0.3	8,151	0	4	21	56	15	4	1.9	0.5		
3.x.x - Economics	1	76	0	7	26	45	17	5	1.9	0.1	48,828	0	11	33	41	12	3	1.6	0.3		
4.x.x - Geography	2	23	0	4	30	39	13	13	2.0	0.2	16,077	0	9	32	39	17	3	1.7	0.3		
5.x.x - Historical Perspective	3	106	0	2	23	50	22	4	2.0	0.1	65,353	0	7	35	46	10	2	1.7	0.3		
<b>MULTIPLE CHOICE</b>																					
1.x.x - Government & Civics	14	493	64	36	0				0.64	0.02	317,571	66	34	0				0.66	-0.02		
2.x.x - Cultures & Societies	11	331	67	33	0				0.67	0.03	211,383	70	30	0				0.69	-0.02		
3.x.x - Economics	11	393	78	22	0				0.78	0.02	252,215	73	27	0				0.73	0.05		
4.x.x - Geography	16	582	64	36	0				0.64	0.02	374,337	66	34	0				0.66	-0.02		
5.x.x - Historical Perspective	27	914	70	30	0				0.70	0.02	586,076	69	31	0				0.69	0.01		



2008-2009  
**INTERIM PERFORMANCE REPORT**  
**WRITING ON-DEMAND TREND DATA**  
**Performance Level Percents**

School: LIBERTY ELEMENTARY  
 District: Fayette County  
 Code: 165057  
 Grade: 05

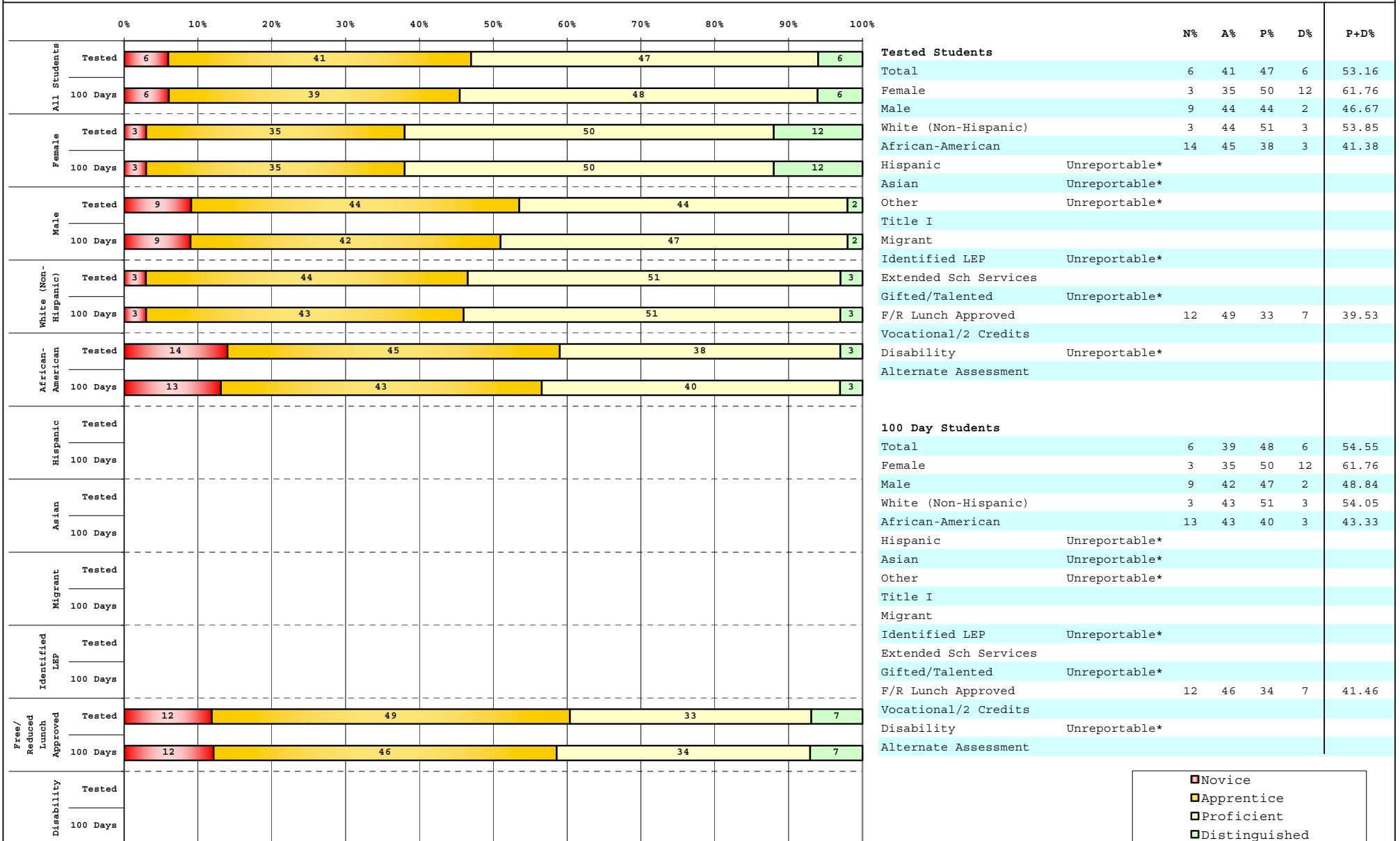


The horizontal bar represents the percent of students scoring at a performance level within a particular year. Percentages may not sum to 100% due to rounding.



2008-2009  
**INTERIM PERFORMANCE REPORT**  
**WRITING ON-DEMAND DISAGGREGATION**  
**Performance Level Percents**

School: LIBERTY ELEMENTARY  
 District: Fayette County  
 Code: 165057  
 Grade: 05



■ Novice
■ Apprentice
■ Proficient
■ Distinguished

Percentage may not sum to 100% due to rounding. 'Unreportable\*' indicates subpopulations with fewer than 10 students or subpopulations where all students score at the same performance level.



**2008-2009**  
**INTERIM PERFORMANCE REPORT**  
**WRITING ON-DEMAND CORE CONTENT**

School: LIBERTY ELEMENTARY  
 District: Fayette County  
 Code: 165057  
 Grade: 05

WRITING PROMPT	SCHOOL												STATE												School
	No. Observations	Percents											Mean	Percents											Mean
	B	0	1	2	3	4	5	6	7	8		B	0	1	2	3	4	5	6	7	8				
<b>Inform</b>																									
1.X.X - Content	24	0	0	0	0	4	38	46	13	0	0	4.67	0	1	1	9	9	34	18	21	4	2	4.43	0.24	
2.X.X - Structure	24	0	0	0	0	13	33	42	13	0	0	4.54	0	1	2	9	10	35	19	19	3	1	4.33	0.21	
3.X.X - Convention	24	0	0	0	0	13	46	33	8	0	0	4.38	0	0	0	12	11	34	19	19	3	1	4.38	0.00	
<b>Narrate for a purpose</b>																									
1.X.X - Content	28	0	0	0	11	4	36	18	18	14	0	4.71	0	1	1	10	9	36	18	21	3	1	4.35	0.36	
2.X.X - Structure	28	0	0	0	18	11	29	14	14	14	0	4.39	0	1	2	10	10	37	17	19	3	1	4.27	0.12	
3.X.X - Convention	28	0	0	0	14	7	36	11	18	14	0	4.54	0	0	0	12	10	36	18	19	3	1	4.33	0.21	
<b>Persuade</b>																									
1.X.X - Content	25	4	0	4	8	12	24	16	16	12	4	4.44	0	1	1	8	8	33	19	21	5	3	4.50	-0.06	
2.X.X - Structure	25	4	0	0	4	24	24	12	16	12	4	4.48	0	2	2	9	10	33	19	20	5	2	4.42	0.06	
3.X.X - Convention	25	4	0	0	8	24	16	20	12	12	4	4.40	0	0	0	11	10	32	19	20	5	2	4.50	-0.10	

MULTIPLE CHOICE	No. Items	SCHOOL							STATE							School
		No. Observations	Percents			Mean	Std. Err.	No. Observations	Percents			Mean	-State Mean			
		Correct	Incorrect	Omit/Mult				Correct	Incorrect	Omit/Mult						
4.x.x - Writing Process	52	912	72	28	0	0.71	0.01	585,936	73	27	0	0.73	-0.02			
4.10.x - Revising	16	207	65	34	1	0.65	0.03	130,317	66	34	0	0.66	-0.01			
4.11.x - Editing	36	705	74	26	0	0.73	0.02	455,619	75	24	0	0.75	-0.02			