



Interim Performance Report

In March 2009, the Kentucky General Assembly passed Senate Bill 1 (SB1) that was subsequently signed into law by the Governor. SB1 calls for a significant overhaul of the state's assessment and accountability system. The new assessment system begins in the spring of 2012. The school years of 2008-2009, 2009-2010 and 2010-2011 are described in SB1 as an interim period. This three-year period allows Kentucky to develop the new assessment system and to carry on state and federal testing requirements.

The Interim Performance Report includes the Kentucky Core Content Test (KCCT) in Reading (grades 3-8 and 10), Mathematics (grades 3-8 and 11), Science (grades 4, 7 and 11), Social Studies (grades 5, 8 and 11) and Writing On-Demand (grades 5, 8 and 12). The KCCT is based on the Kentucky Core Content for Assessment (Version 4.1) and contains multiple choice and open response questions. The Writing On-Demand test uses writing prompts that require students to craft a piece of writing in a 60 minute period.

The KCCT is developed under the direction of content advisory committees of Kentucky educators who draft, review and select test questions. All test items are reviewed by a bias review committee to enhance the fairness of items for all Kentucky students.

The KCCT continues to fulfill the requirements of the federal statute known as the No Child Left Behind Act of 2001. A separate accountability report for No Child Left Behind (NCLB) is published by the Kentucky Department of Education.

The Interim Performance Report focuses entirely on the five state-required content areas and provides data for schools or districts. The data in this report is not used directly for state accountability; although, these results can fulfill the requirements of Senate Bill 168 from 2002 and may be used by schools or districts for their own local accountability needs.

Performance standards are based on descriptions of Novice, Apprentice, Proficient and Distinguished (NAPD) student performance levels specific to the content area and grade being assessed. The performance standards, in conjunction with Kentucky's Core Content for Assessment, should allow instruction to better focus on the content area to be taught and on how well students must demonstrate achievement in each content area.

Reporting Changes for 2009

Based on SB1, Kentucky will not be reporting state accountability and academic indices as in the past. The report does have several familiar pages with performance level (NAPD) trend, core content and disaggregation data per content area. Districts and schools will still see distributions of how students scored in the Novice (with sublevels), Apprentice (with sublevels), Proficient and Distinguished performance levels.

Confidentiality Changes

Due to federal regulations around the Family Education Rights and Privacy Act (FERPA), the numbers of students have been removed. Though there is a need to report as much data as possible, there is also a paramount need to maintain the confidential aspects of individual scores. When scores are reported in what is commonly called "small cells" where very few students may be categorized, there is the possibility of revealing individual scores when numbers are reported. Numbers are reported to each district in a confidential report that accompanies the public Interim Performance Report.

2008-2009

INTERIM PERFORMANCE REPORT

School: Lansdowne Elementary School

District: Fayette County

Code: 165062

Grade: PRIMARY-05

CONTENTS OF THIS REPORT

Introduction	1
Academic Trend Data	
Reading Results	2-8
Mathematics Results	9-15
Science Results	16-18
Social Studies Results	19-21
Writing Results	22-24

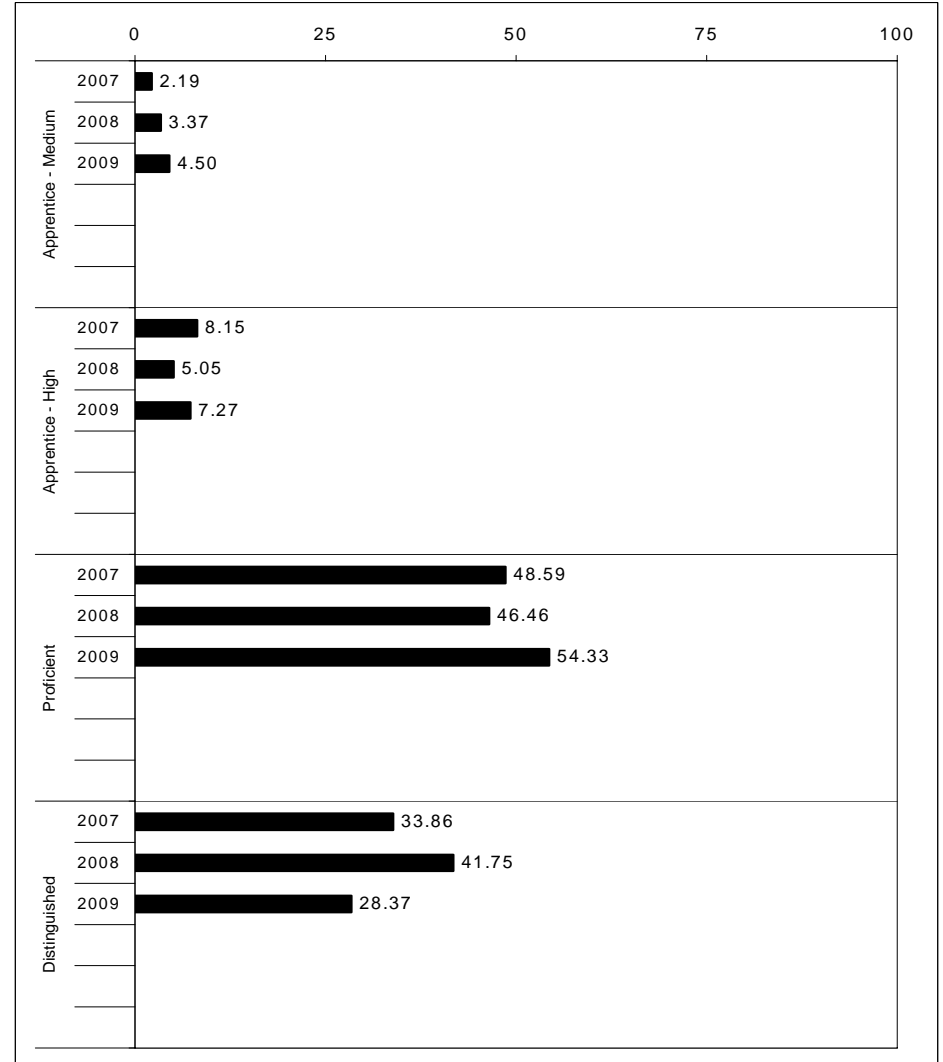
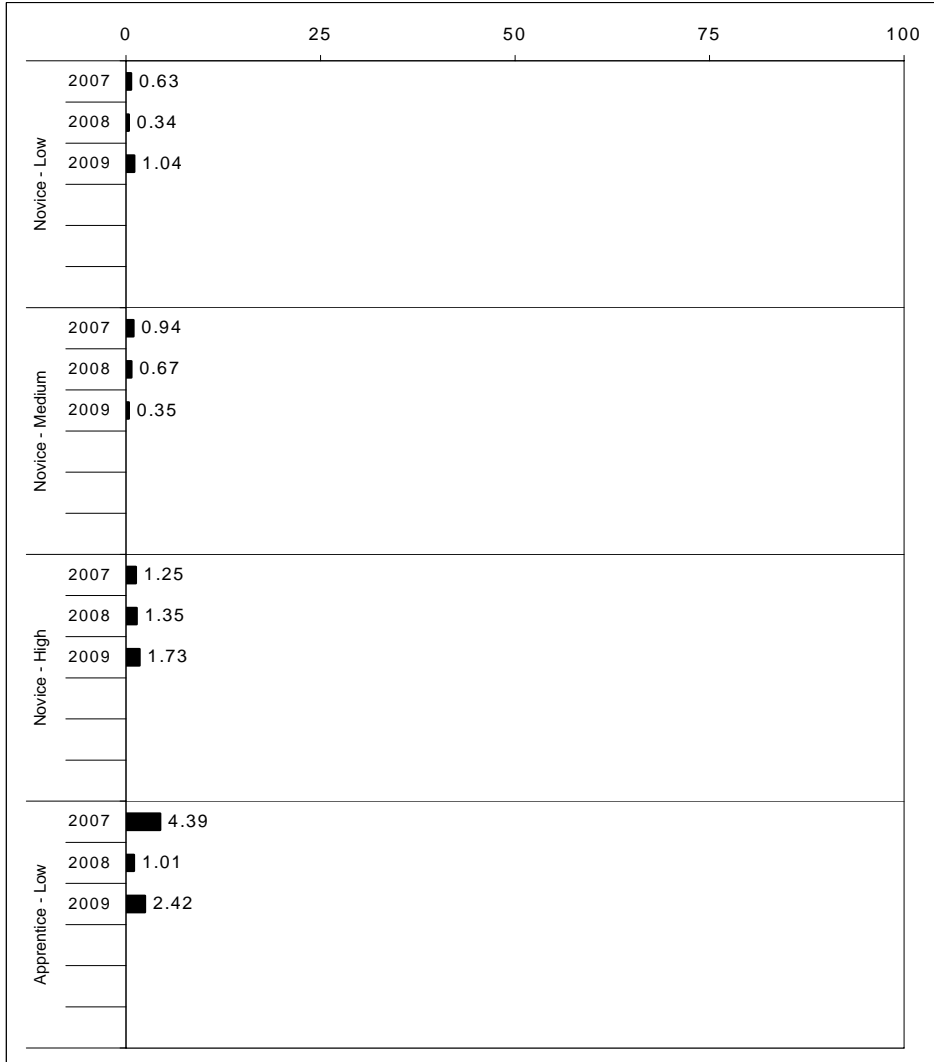
For more information, refer to the 2009 Interim Assessment Interpretative Guide on the Kentucky Department of Education Web site (www.education.ky.gov).





2008-2009
INTERIM PERFORMANCE REPORT
READING TREND DATA
Performance Level Percents

School: Lansdowne Elementary School
 District: Fayette County
 Code: 165062
 Grade: ELEMENTARY



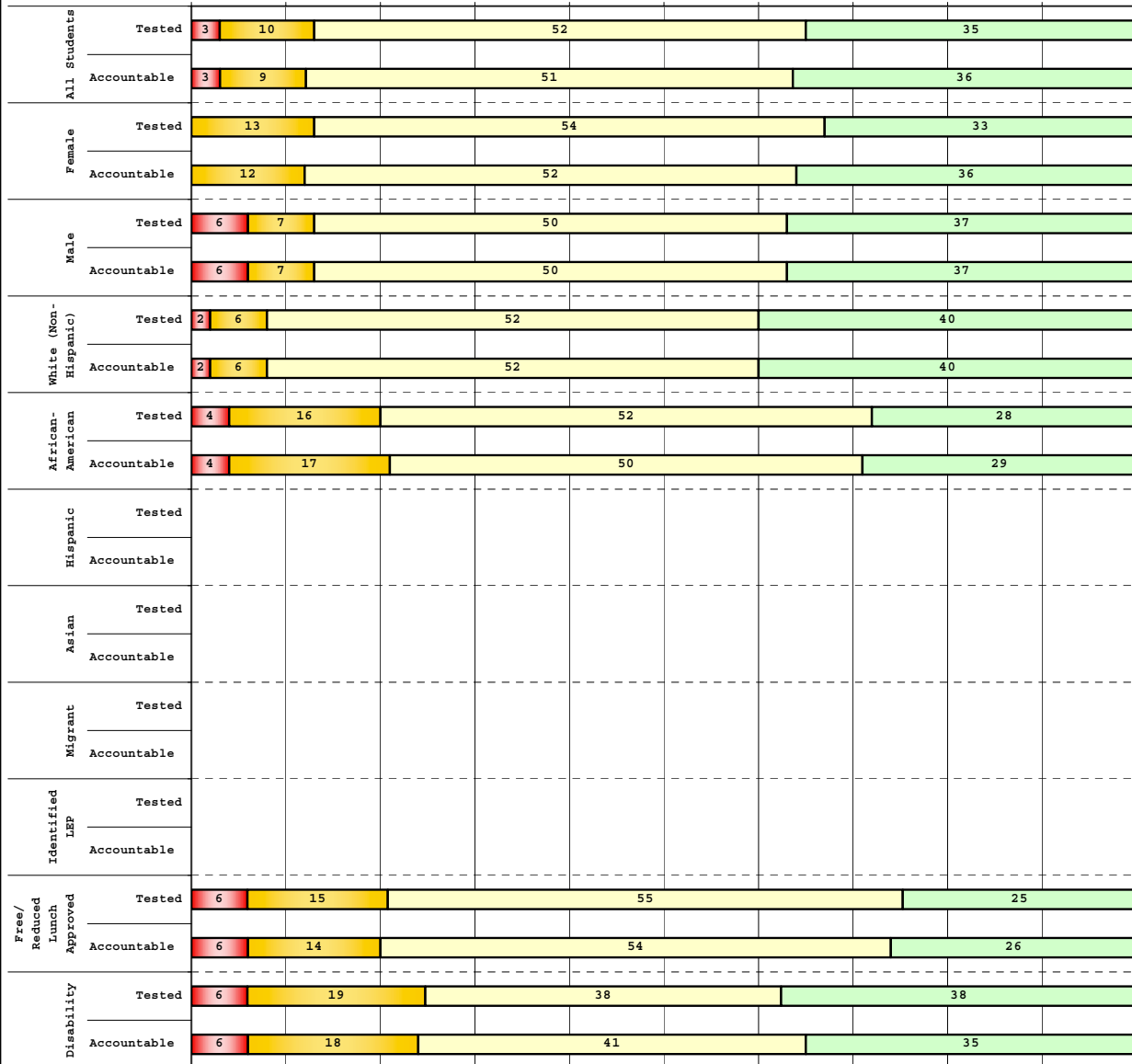
The horizontal bar represents the percent of students scoring at a performance level within a particular year. Percentages may not sum to 100% due to rounding.



**2008-2009
INTERIM PERFORMANCE REPORT
READING DISAGGREGATION
Performance Level Percents**

School: Lansdowne Elementary School
 District: Fayette County
 Code: 165062
 Grade: 03

0% 10% 20% 30% 40% 50% 60% 70% 80% 90% 100%

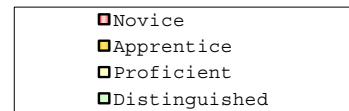


Tested Students

	N%	A%	P%	D%	P+D%
Total	3	10	52	35	87.00
Female	0	13	54	33	86.96
Male	6	7	50	37	87.04
White (Non-Hispanic)	2	6	52	40	92.06
African-American	4	16	52	28	80.00
Hispanic	Unreportable*				
Asian	Unreportable*				
Other	Unreportable*				
Title I	3	10	52	35	87.00
Migrant	Unreportable*				
Identified LEP	Unreportable*				
Extended Sch Services	Unreportable*				
Gifted/Talented	0	0	24	76	100.00
F/R Lunch Approved	6	15	55	25	79.25
Vocational/2 Credits	Unreportable*				
Disability	6	19	38	38	75.00
Alternate Assessment	Unreportable*				

NCLB Accountable Students

	N%	A%	P%	D%	P+D%
Total	3	9	51	36	87.50
Female	0	12	52	36	88.10
Male	6	7	50	37	87.04
White (Non-Hispanic)	2	6	52	40	91.94
African-American	4	17	50	29	79.17
Hispanic	Unreportable*				
Asian	Unreportable*				
Other	Unreportable*				
Title I	3	9	51	36	87.50
Migrant	Unreportable*				
Identified LEP	Unreportable*				
Extended Sch Services	Unreportable*				
Gifted/Talented	0	0	24	76	100.00
F/R Lunch Approved	6	14	54	26	80.00
Vocational/2 Credits	Unreportable*				
Disability	6	18	41	35	76.47
Alternate Assessment	Unreportable*				



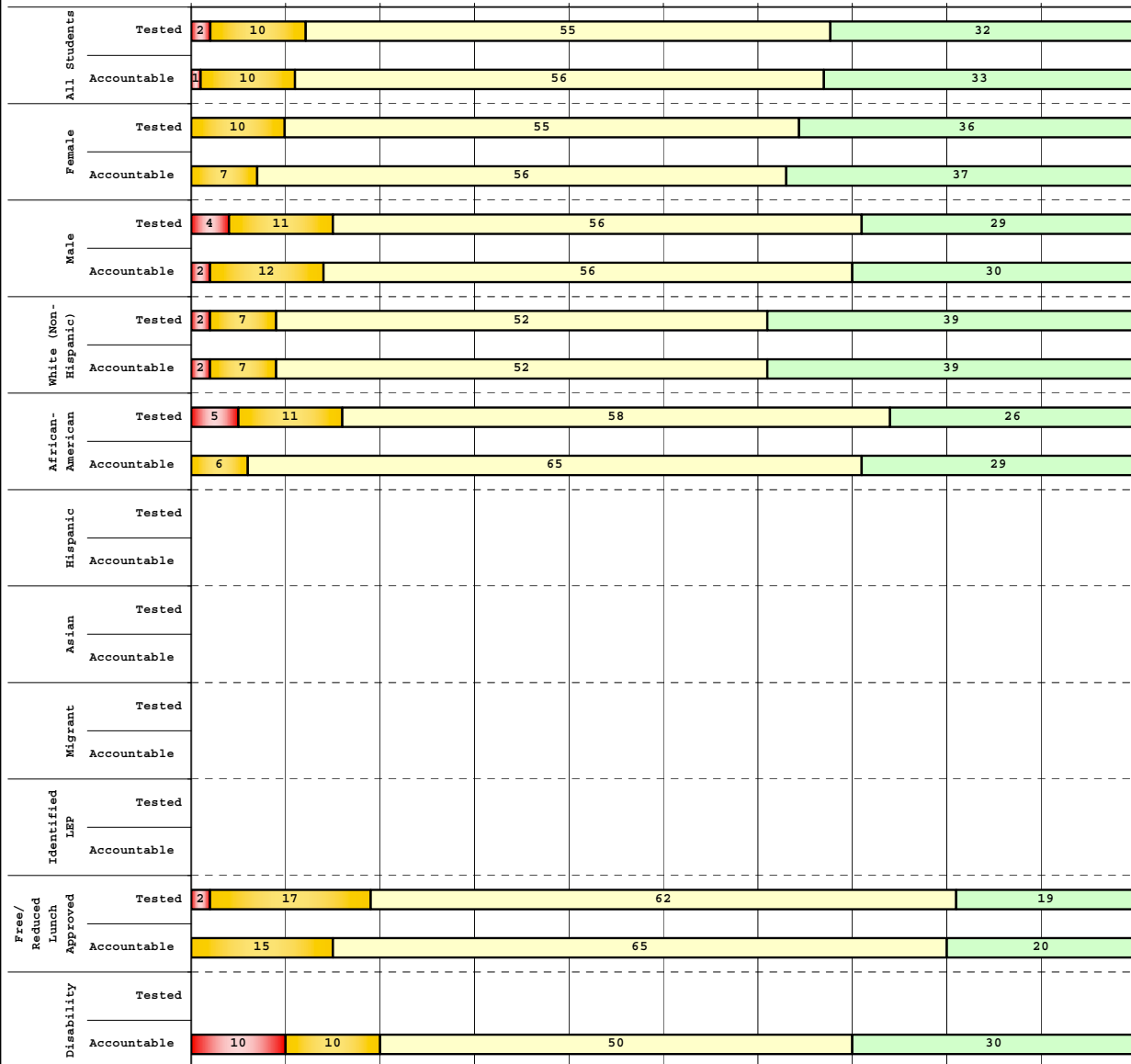
Percentage may not sum to 100% due to rounding. 'Unreportable*' indicates subpopulations with fewer than 10 students or subpopulations where all students score at the same performance level.



**2008-2009
INTERIM PERFORMANCE REPORT
READING DISAGGREGATION
Performance Level Percents**

School: Lansdowne Elementary School
 District: Fayette County
 Code: 165062
 Grade: 04

0% 10% 20% 30% 40% 50% 60% 70% 80% 90% 100%



Tested Students

	N%	A%	P%	D%	P+D%
Total	2	10	55	32	87.36
Female	0	10	55	36	90.48
Male	4	11	56	29	84.44
White (Non-Hispanic)	2	7	52	39	91.07
African-American	5	11	58	26	84.21
Hispanic	Unreportable*				
Asian	Unreportable*				
Other	Unreportable*				
Title I	2	10	55	32	87.36
Migrant	Unreportable*				
Identified LEP	Unreportable*				
Extended Sch Services	Unreportable*				
Gifted/Talented	Unreportable*				
F/R Lunch Approved	2	17	62	19	80.95
Vocational/2 Credits	Unreportable*				
Disability	Unreportable*				
Alternate Assessment	Unreportable*				

NCLB Accountable Students

	N%	A%	P%	D%	P+D%
Total	1	10	56	33	89.29
Female	0	7	56	37	92.68
Male	2	12	56	30	86.05
White (Non-Hispanic)	2	7	52	39	91.07
African-American	0	6	65	29	94.12
Hispanic	Unreportable*				
Asian	Unreportable*				
Other	Unreportable*				
Title I	1	10	56	33	89.29
Migrant	Unreportable*				
Identified LEP	Unreportable*				
Extended Sch Services	Unreportable*				
Gifted/Talented	Unreportable*				
F/R Lunch Approved	0	15	65	20	85.00
Vocational/2 Credits	Unreportable*				
Disability	10	10	50	30	80.00
Alternate Assessment	Unreportable*				

■ Novice
■ Apprentice
■ Proficient
■ Distinguished

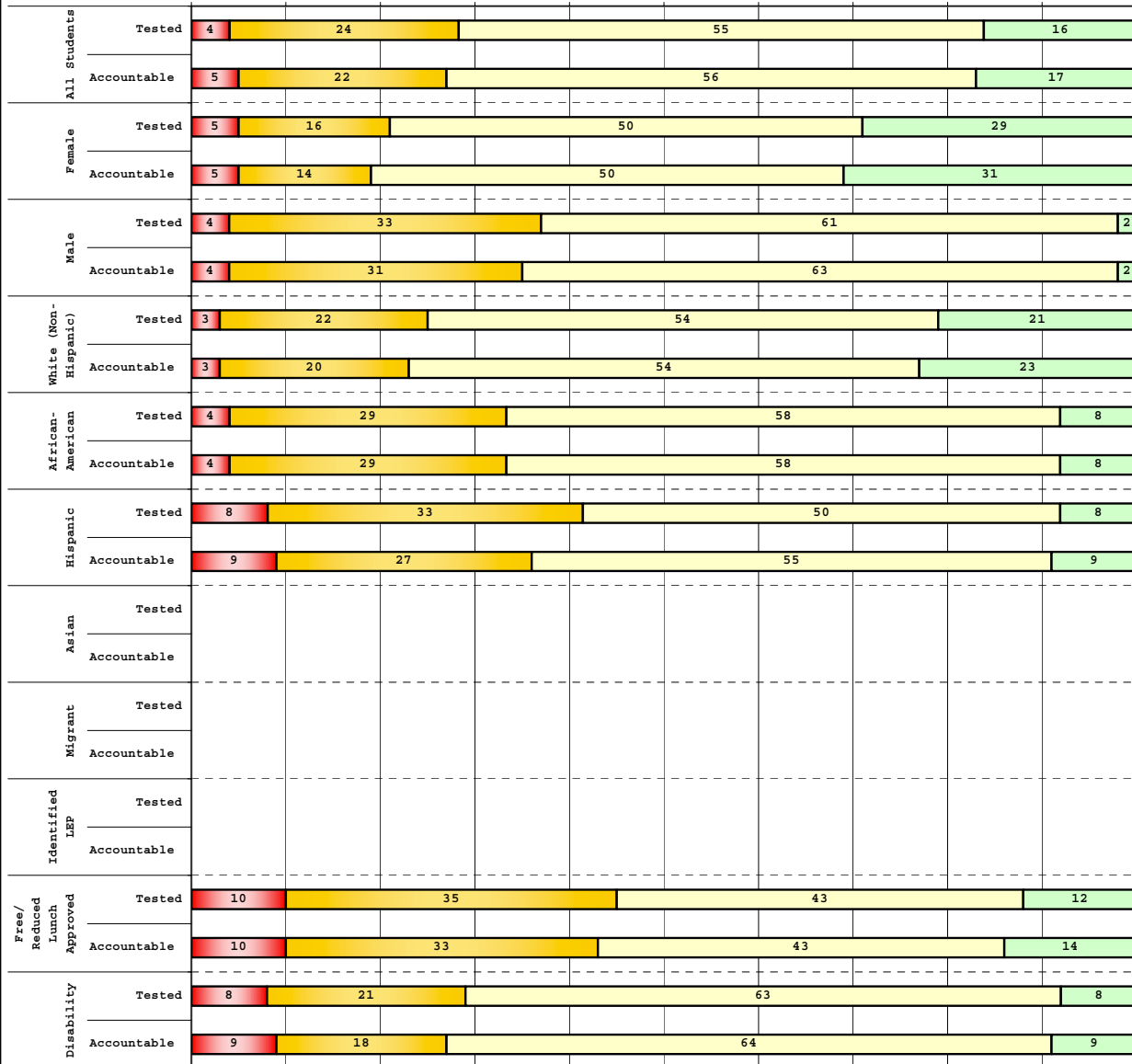
Percentage may not sum to 100% due to rounding. 'Unreportable*' indicates subpopulations with fewer than 10 students or subpopulations where all students score at the same performance level.



**2008-2009
INTERIM PERFORMANCE REPORT
READING DISAGGREGATION
Performance Level Percents**

School: Lansdowne Elementary School
 District: Fayette County
 Code: 165062
 Grade: 05

0% 10% 20% 30% 40% 50% 60% 70% 80% 90% 100%



	N%	A%	P%	D%	P+D%
Tested Students					
Total	4	24	55	16	71.43
Female	5	16	50	29	79.31
Male	4	33	61	2	62.96
White (Non-Hispanic)	3	22	54	21	75.00
African-American	4	29	58	8	66.67
Hispanic	8	33	50	8	58.33
Asian	Unreportable*				
Other	Unreportable*				
Title I	4	24	55	16	71.43
Migrant	Unreportable*				
Identified LEP	Unreportable*				
Extended Sch Services	Unreportable*				
Gifted/Talented	Unreportable*				
F/R Lunch Approved	10	35	43	12	54.90
Vocational/2 Credits	Unreportable*				
Disability	8	21	63	8	70.83
Alternate Assessment	Unreportable*				
NCLB Accountable Students					
Total	5	22	56	17	73.39
Female	5	14	50	31	81.03
Male	4	31	63	2	64.71
White (Non-Hispanic)	3	20	54	23	77.14
African-American	4	29	58	8	66.67
Hispanic	9	27	55	9	63.64
Asian	Unreportable*				
Other	Unreportable*				
Title I	5	22	56	17	73.39
Migrant	Unreportable*				
Identified LEP	Unreportable*				
Extended Sch Services	Unreportable*				
Gifted/Talented	Unreportable*				
F/R Lunch Approved	10	33	43	14	57.14
Vocational/2 Credits	Unreportable*				
Disability	9	18	64	9	72.73
Alternate Assessment	Unreportable*				

■ Novice
■ Apprentice
■ Proficient
■ Distinguished

Percentage may not sum to 100% due to rounding. 'Unreportable*' indicates subpopulations with fewer than 10 students or subpopulations where all students score at the same performance level.



2008-2009
INTERIM PERFORMANCE REPORT
READING CORE CONTENT

School: Lansdowne Elementary School
 District: Fayette County
 Code: 165062
 Grade: 03

	No. Items	No. Observations	SCHOOL								STATE								School -State Mean
			Percents						Mean	Std. Err.	Percents						Mean		
			B	0	1	2	3	4					No. Observations	B	0	1		2	3
OPEN RESPONSE																			
2.0.x - Developing Understanding	2	192	0	5	24	39	28	4	2.0	0.1	100,212	0	10	30	44	14	2	1.7	0.3
3.0.x - Interpreting Text	2	192	0	5	24	39	28	4	2.0	0.1	100,212	0	10	30	44	14	2	1.7	0.3
MULTIPLE CHOICE																			
1.0.x - Forming a Foundation	32	755	88	11	1				0.88	0.01	392,589	83	17	0				0.83	0.05
2.0.x - Developing Understanding	89	1,899	84	16	0				0.84	0.01	993,477	80	20	0				0.80	0.04
3.0.x - Interpreting Text	31	893	84	16	0				0.84	0.01	468,115	77	23	0				0.77	0.07
5.0.x - Critical Stance	15	407	87	13	0				0.87	0.02	208,359	79	21	0				0.79	0.08



2008-2009
INTERIM PERFORMANCE REPORT
READING CORE CONTENT

School: Lansdowne Elementary School
 District: Fayette County
 Code: 165062
 Grade: 04

	No. Items	No. Observations	SCHOOL								Std. Err.	No. Observations	STATE								School -State Mean
			B	0	1	2	3	4	Mean	B			0	1	2	3	4	Mean			
OPEN RESPONSE																					
2.0.x - Developing Understanding	5	135	0	1	7	50	30	13	2.5	0.1	81,849	0	3	24	52	18	3	1.9	0.6		
3.0.x - Interpreting Text	6	225	0	3	10	42	34	12	2.4	0.1	131,199	0	4	22	45	23	5	2.0	0.4		
MULTIPLE CHOICE																					
1.0.x - Forming a Foundation	34	690	77	24	0				0.77	0.02	401,452	72	28	0				0.71	0.06		
2.0.x - Developing Understanding	76	1,491	78	22	0				0.78	0.01	868,422	73	27	0				0.73	0.05		
3.0.x - Interpreting Text	29	462	86	14	0				0.86	0.02	278,648	79	21	0				0.79	0.07		
5.0.x - Critical Stance	9	260	80	20	0				0.80	0.03	155,704	74	26	0				0.74	0.06		



**2008-2009
INTERIM PERFORMANCE REPORT
READING CORE CONTENT**

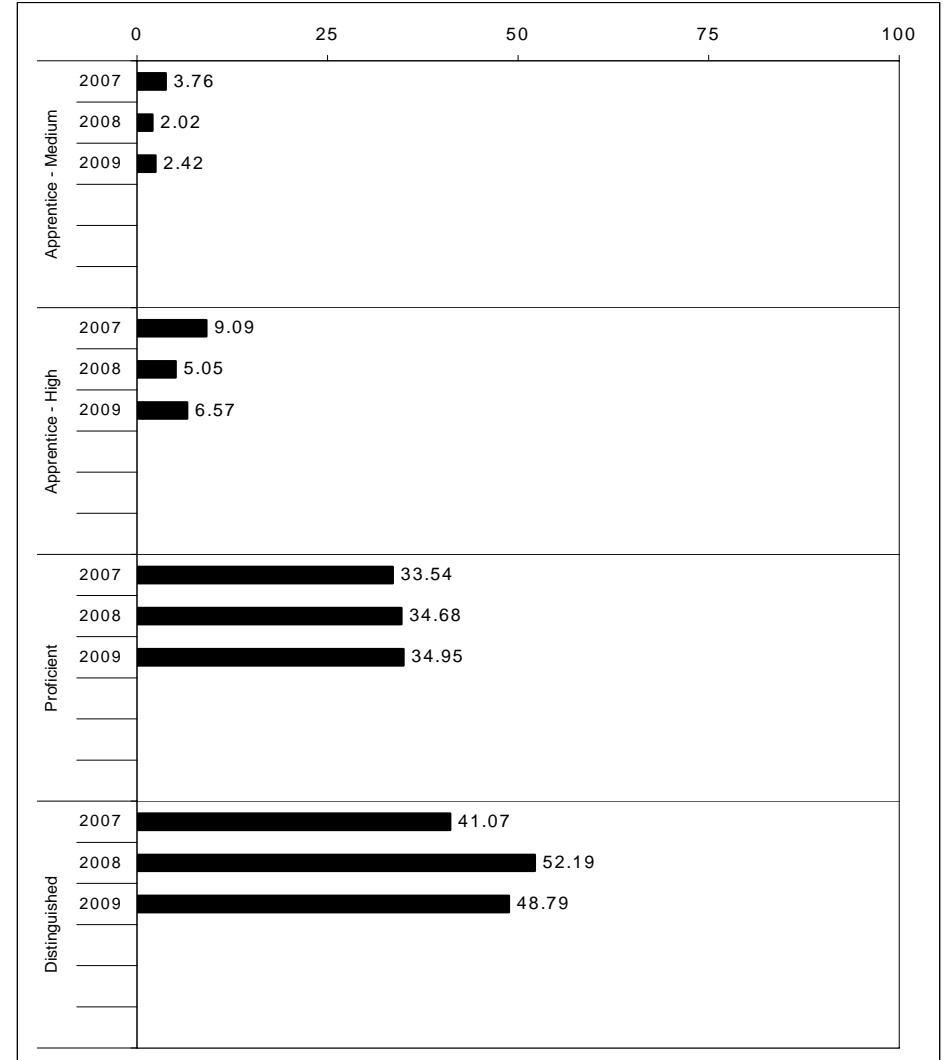
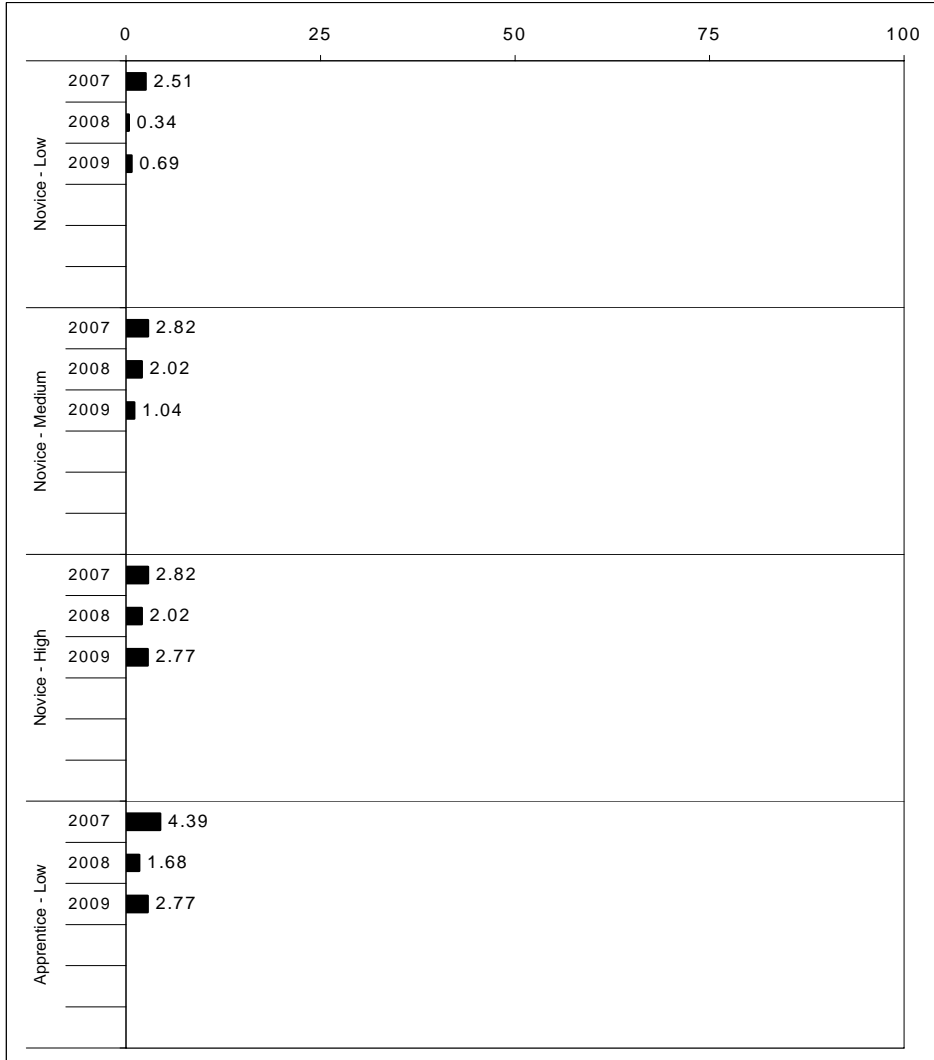
School: Lansdowne Elementary School
 District: Fayette County
 Code: 165062
 Grade: 05

	No. Items	No. Observations	SCHOOL							Mean	Std. Err.	No. Observations	STATE							Mean	School -State Mean
			B	0	1	2	3	4	B				0	1	2	3	4				
OPEN RESPONSE																					
2.0.x - Developing Understanding	6	197	0	4	14	49	28	5	2.2	0.1	89,507	0	5	23	48	20	5	2.0	0.2		
3.0.x - Interpreting Text	6	287	0	6	14	53	23	5	2.1	0.1	130,403	0	5	21	50	19	4	2.0	0.1		
MULTIPLE CHOICE																					
1.0.x - Forming a Foundation	28	592	75	26	0			0.74	0.02	268,187	74	26	0			0.74	0.00				
2.0.x - Developing Understanding	71	1,819	79	21	0			0.79	0.01	823,068	80	20	0			0.80	-0.01				
3.0.x - Interpreting Text	27	750	84	16	0			0.83	0.01	341,653	81	19	0			0.81	0.02				
5.0.x - Critical Stance	17	672	80	20	0			0.80	0.02	300,671	75	25	0			0.75	0.05				



2008-2009
INTERIM PERFORMANCE REPORT
MATHEMATICS TREND DATA
Performance Level Percents

School: Lansdowne Elementary School
 District: Fayette County
 Code: 165062
 Grade: ELEMENTARY



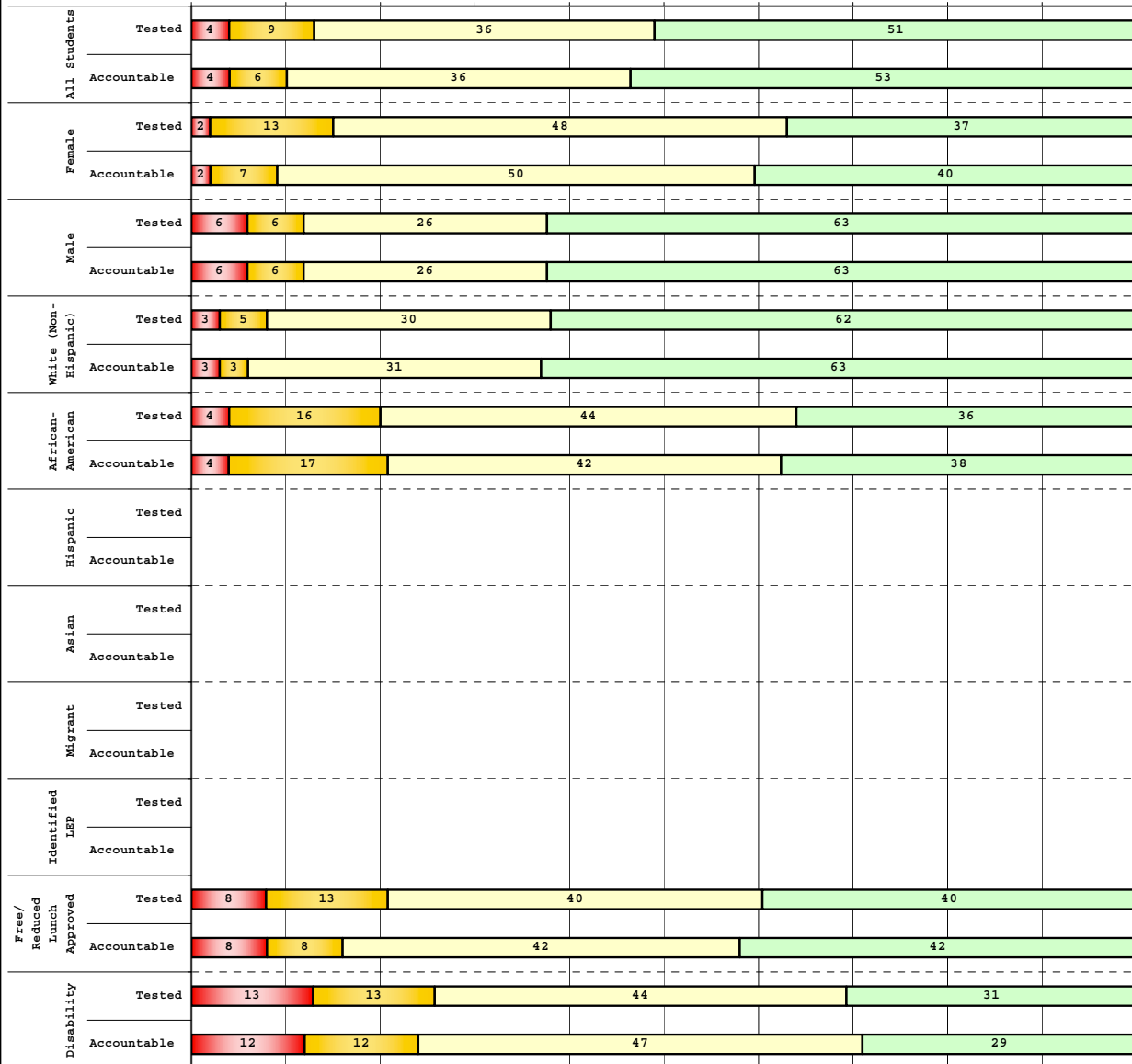
The horizontal bar represents the percent of students scoring at a performance level within a particular year. Percentages may not sum to 100% due to rounding.



**2008-2009
INTERIM PERFORMANCE REPORT
MATHEMATICS DISAGGREGATION
Performance Level Percents**

School: Lansdowne Elementary School
District: Fayette County
Code: 165062
Grade: 03

0% 10% 20% 30% 40% 50% 60% 70% 80% 90% 100%

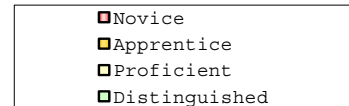


Tested Students

	N%	A%	P%	D%	P+D%
Total	4	9	36	51	87.00
Female	2	13	48	37	84.78
Male	6	6	26	63	88.89
White (Non-Hispanic)	3	5	30	62	92.06
African-American	4	16	44	36	80.00
Hispanic	Unreportable*				
Asian	Unreportable*				
Other	Unreportable*				
Title I	4	9	36	51	87.00
Migrant	Unreportable*				
Identified LEP	Unreportable*				
Extended Sch Services	Unreportable*				
Gifted/Talented	0	0	6	94	100.00
F/R Lunch Approved	8	13	40	40	79.25
Vocational/2 Credits	Unreportable*				
Disability	13	13	44	31	75.00
Alternate Assessment	Unreportable*				

NCLB Accountable Students

	N%	A%	P%	D%	P+D%
Total	4	6	36	53	89.58
Female	2	7	50	40	90.48
Male	6	6	26	63	88.89
White (Non-Hispanic)	3	3	31	63	93.55
African-American	4	17	42	38	79.17
Hispanic	Unreportable*				
Asian	Unreportable*				
Other	Unreportable*				
Title I	4	6	36	53	89.58
Migrant	Unreportable*				
Identified LEP	Unreportable*				
Extended Sch Services	Unreportable*				
Gifted/Talented	0	0	6	94	100.00
F/R Lunch Approved	8	8	42	42	84.00
Vocational/2 Credits	Unreportable*				
Disability	12	12	47	29	76.47
Alternate Assessment	Unreportable*				



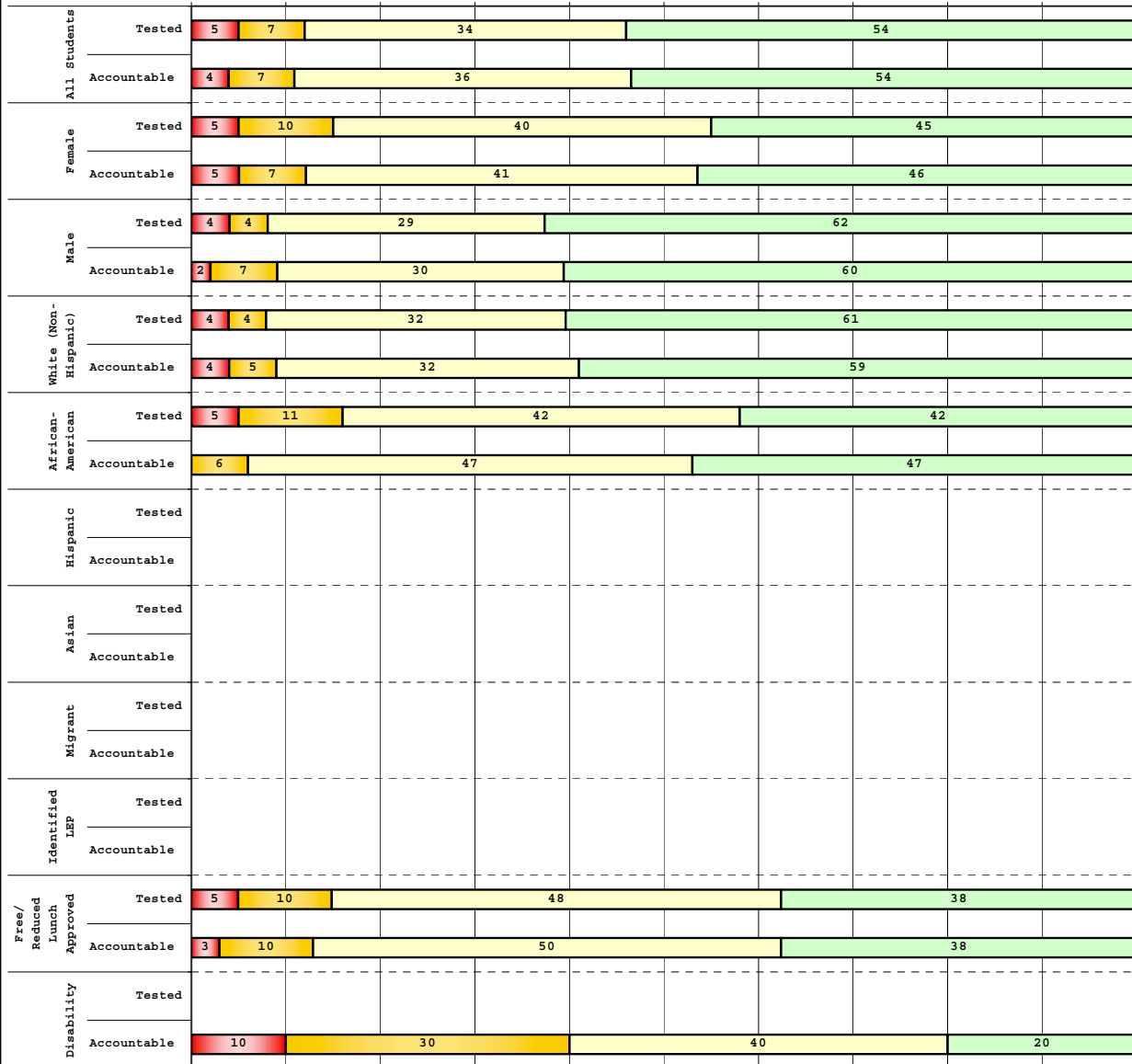
Percentage may not sum to 100% due to rounding. 'Unreportable*' indicates subpopulations with fewer than 10 students or subpopulations where all students score at the same performance level.



2008-2009
INTERIM PERFORMANCE REPORT
MATHEMATICS DISAGGREGATION
Performance Level Percents

School: Lansdowne Elementary School
 District: Fayette County
 Code: 165062
 Grade: 04

0% 10% 20% 30% 40% 50% 60% 70% 80% 90% 100%



Tested Students

	N%	A%	P%	D%	P+D%
Total	5	7	34	54	88.51
Female	5	10	40	45	85.71
Male	4	4	29	62	91.11
White (Non-Hispanic)	4	4	32	61	92.86
African-American	5	11	42	42	84.21
Hispanic	Unreportable*				
Asian	Unreportable*				
Other	Unreportable*				
Title I	5	7	34	54	88.51
Migrant	Unreportable*				
Identified LEP	Unreportable*				
Extended Sch Services	Unreportable*				
Gifted/Talented	Unreportable*				
F/R Lunch Approved	5	10	48	38	85.71
Vocational/2 Credits	Unreportable*				
Disability	Unreportable*				
Alternate Assessment	Unreportable*				

NCLB Accountable Students

	N%	A%	P%	D%	P+D%
Total	4	7	36	54	89.29
Female	5	7	41	46	87.80
Male	2	7	30	60	90.70
White (Non-Hispanic)	4	5	32	59	91.07
African-American	0	6	47	47	94.12
Hispanic	Unreportable*				
Asian	Unreportable*				
Other	Unreportable*				
Title I	4	7	36	54	89.29
Migrant	Unreportable*				
Identified LEP	Unreportable*				
Extended Sch Services	Unreportable*				
Gifted/Talented	Unreportable*				
F/R Lunch Approved	3	10	50	38	87.50
Vocational/2 Credits	Unreportable*				
Disability	10	30	40	20	60.00
Alternate Assessment	Unreportable*				

■ Novice
■ Apprentice
■ Proficient
■ Distinguished

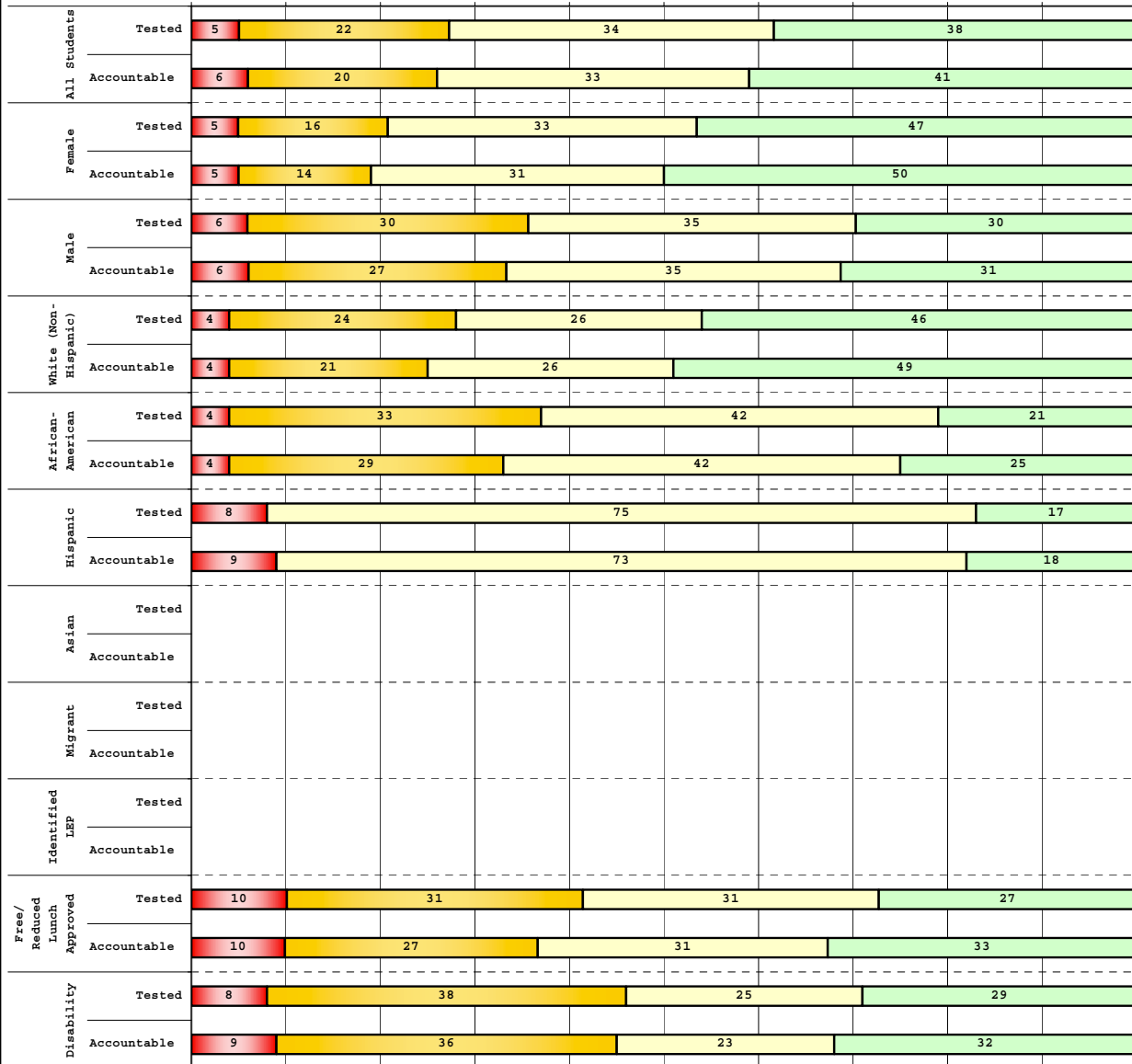
Percentage may not sum to 100% due to rounding. 'Unreportable*' indicates subpopulations with fewer than 10 students or subpopulations where all students score at the same performance level.



**2008-2009
INTERIM PERFORMANCE REPORT
MATHEMATICS DISAGGREGATION
Performance Level Percents**

School: Lansdowne Elementary School
 District: Fayette County
 Code: 165062
 Grade: 05

0% 10% 20% 30% 40% 50% 60% 70% 80% 90% 100%

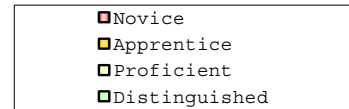


Tested Students

	N%	A%	P%	D%	P+D%
Total	5	22	34	38	72.32
Female	5	16	33	47	79.31
Male	6	30	35	30	64.81
White (Non-Hispanic)	4	24	26	46	72.22
African-American	4	33	42	21	62.50
Hispanic	8	0	75	17	91.67
Asian	Unreportable*				
Other	Unreportable*				
Title I	5	22	34	38	72.32
Migrant	Unreportable*				
Identified LEP	Unreportable*				
Extended Sch Services	Unreportable*				
Gifted/Talented	Unreportable*				
F/R Lunch Approved	10	31	31	27	58.82
Vocational/2 Credits	Unreportable*				
Disability	8	38	25	29	54.17
Alternate Assessment	Unreportable*				

NCLB Accountable Students

	N%	A%	P%	D%	P+D%
Total	6	20	33	41	74.31
Female	5	14	31	50	81.03
Male	6	27	35	31	66.67
White (Non-Hispanic)	4	21	26	49	74.29
African-American	4	29	42	25	66.67
Hispanic	9	0	73	18	90.91
Asian	Unreportable*				
Other	Unreportable*				
Title I	6	20	33	41	74.31
Migrant	Unreportable*				
Identified LEP	Unreportable*				
Extended Sch Services	Unreportable*				
Gifted/Talented	Unreportable*				
F/R Lunch Approved	10	27	31	33	63.27
Vocational/2 Credits	Unreportable*				
Disability	9	36	23	32	54.55
Alternate Assessment	Unreportable*				



Percentage may not sum to 100% due to rounding. 'Unreportable*' indicates subpopulations with fewer than 10 students or subpopulations where all students score at the same performance level.



2008-2009
INTERIM PERFORMANCE REPORT
MATHEMATICS CORE CONTENT

School: Lansdowne Elementary School
 District: Fayette County
 Code: 165062
 Grade: 03

	No. Items	No. Observations	SCHOOL								Std. Err.	No. Observations	STATE								School -State Mean
			B	0	1	2	3	4	Mean	B			0	1	2	3	4	Mean			
OPEN RESPONSE																					
1.x.x - Number Prop Oper	5	240	0	12	33	31	14	10	1.8	0.1	125,243	0	21	35	26	10	8	1.5	0.3		
2.x.x - Measurement	1	16	0	0	0	50	19	31	2.8	0.4	8,325	0	25	5	30	14	25	2.1	0.7		
3.x.x - Geometry	2	33	0	3	6	39	15	36	2.8	0.2	16,777	0	8	24	35	13	20	2.1	0.7		
4.x.x - Data Analysis & Probabilit	1	96	0	5	8	17	18	52	3.0	0.1	50,106	0	9	13	19	27	32	2.6	0.4		
5.x.x - Algebraic Thinking	2	111	0	5	9	15	20	50	3.0	0.1	58,404	0	9	14	19	28	31	2.6	0.4		
MULTIPLE CHOICE																					
1.x.x - Number Prop Oper	32	1,554	Correct	Incorrect	Omit/Mult				0.80	0.01	810,106	Correct	Incorrect	Omit/Mult				0.74	0.06		
2.x.x - Measurement	7	351	80	20	0				0.85	0.02	183,647	74	26	0				0.81	0.04		
3.x.x - Geometry	18	768	86	14	0				0.90	0.01	400,848	81	18	0				0.85	0.05		
4.x.x - Data Analysis & Probabilit	8	369	91	9	0				0.77	0.02	192,126	85	15	0				0.69	0.08		
5.x.x - Algebraic Thinking	11	414	77	23	0				0.82	0.02	217,089	69	31	0				0.78	0.04		



2008-2009
INTERIM PERFORMANCE REPORT
MATHEMATICS CORE CONTENT

School: Lansdowne Elementary School
 District: Fayette County
 Code: 165062
 Grade: 04

	No. Items	No. Observations	SCHOOL								STATE								School -State Mean
			Percents						Mean	Std. Err.	Percents						Mean		
			B	0	1	2	3	4					No. Observations	B	0	1		2	3
OPEN RESPONSE																			
1.x.x - Number Prop Oper	4	129	0	9	15	36	18	22	2.3	0.1	73,656	0	17	24	29	19	12	1.9	0.4
2.x.x - Measurement	1	13	0	15	8	15	15	46	2.7	0.4	8,195	0	43	13	10	20	13	1.5	1.2
3.x.x - Geometry	2	95	0	5	15	7	16	57	3.0	0.1	57,352	0	11	20	17	19	33	2.4	0.6
4.x.x - Data Analysis & Probabilit	1	12	0	0	0	25	50	25	3.0	0.3	8,152	0	5	36	29	23	6	1.9	1.1
5.x.x - Algebraic Thinking	2	100	0	1	19	34	28	18	2.4	0.1	57,508	0	5	27	32	25	11	2.1	0.3
MULTIPLE CHOICE																			
1.x.x - Number Prop Oper	31	1,140	73	27	0				0.73	0.01	664,194	67	33	0				0.67	0.06
2.x.x - Measurement	7	238	65	35	0				0.65	0.03	139,170	62	38	0				0.62	0.03
3.x.x - Geometry	14	477	85	15	0				0.85	0.02	278,460	77	23	0				0.77	0.08
4.x.x - Data Analysis & Probabilit	12	516	85	15	0				0.85	0.02	303,394	71	29	0				0.71	0.14
5.x.x - Algebraic Thinking	11	430	77	23	0				0.77	0.02	253,829	69	31	0				0.69	0.08



2008-2009
INTERIM PERFORMANCE REPORT
MATHEMATICS CORE CONTENT

School: Lansdowne Elementary School
 District: Fayette County
 Code: 165062
 Grade: 05

	No. Items	No. Observations	SCHOOL								STATE								School -State Mean
			Percents						Mean	Std. Err.	Percents						Mean		
			B	0	1	2	3	4					No. Observations	B	0	1		2	3
OPEN RESPONSE																			
1.x.x - Number Prop Oper	4	163	0	4	12	17	28	39	2.9	0.1	73,199	0	8	20	18	25	29	2.5	0.4
2.x.x - Measurement	1	16	0	38	25	25	0	13	1.3	0.3	8,380	0	37	30	13	10	11	1.3	0.0
3.x.x - Geometry	2	126	0	5	17	26	31	21	2.5	0.1	56,900	0	6	24	30	26	14	2.2	0.3
4.x.x - Data Analysis & Probabilit	1	108	0	11	6	17	23	43	2.8	0.1	48,828	0	15	18	15	17	35	2.4	0.4
5.x.x - Algebraic Thinking	1	19	0	5	16	21	16	42	2.7	0.3	8,005	0	13	15	20	17	35	2.5	0.2
MULTIPLE CHOICE																			
1.x.x - Number Prop Oper	29	1,420	Correct	Incorrect	Omit/Mult				0.69	0.01	643,144	Correct	Incorrect	Omit/Mult				0.63	0.06
2.x.x - Measurement	9	343	69	31	0				0.60	0.03	154,489	63	37	0				0.62	-0.02
3.x.x - Geometry	14	614	60	40	0				0.81	0.02	276,516	78	22	0				0.78	0.03
4.x.x - Data Analysis & Probabilit	11	558	81	19	0				0.68	0.02	252,212	64	36	0				0.64	0.04
5.x.x - Algebraic Thinking	10	540	68	32	0				0.68	0.02	244,140	65	35	0				0.65	0.03



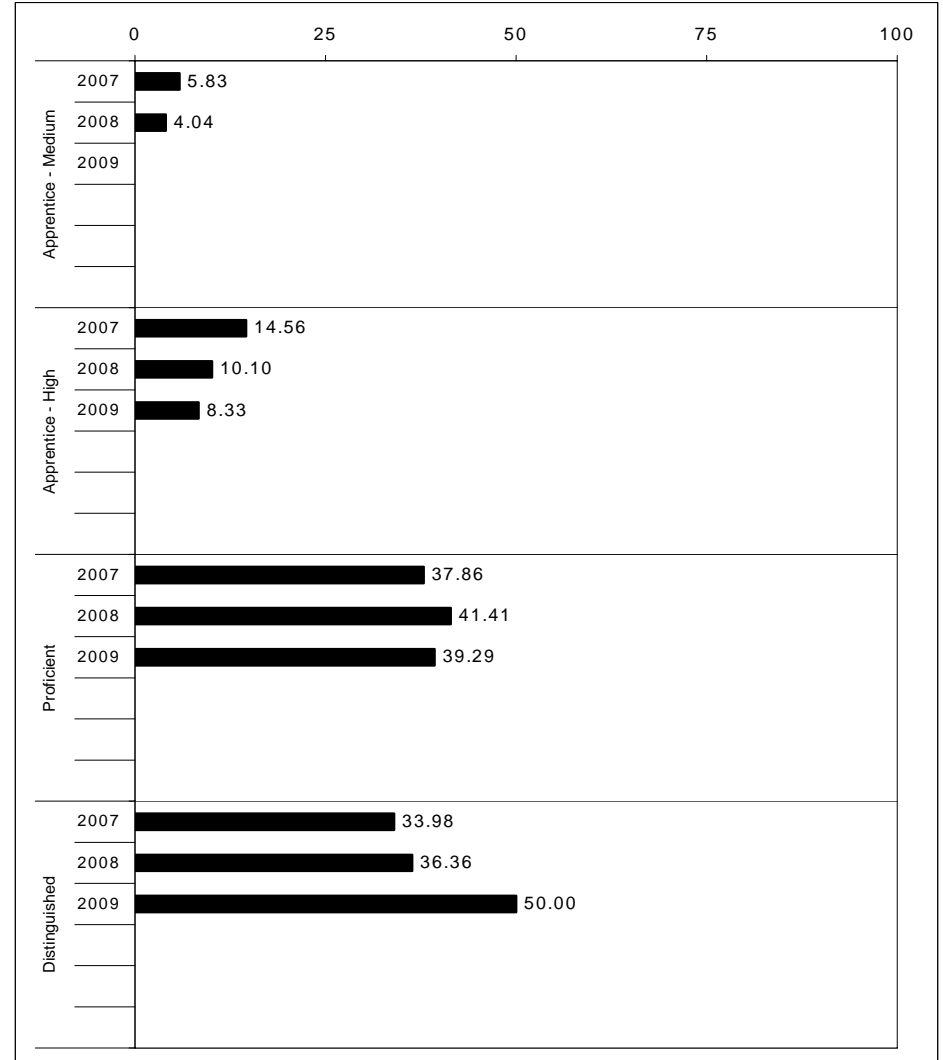
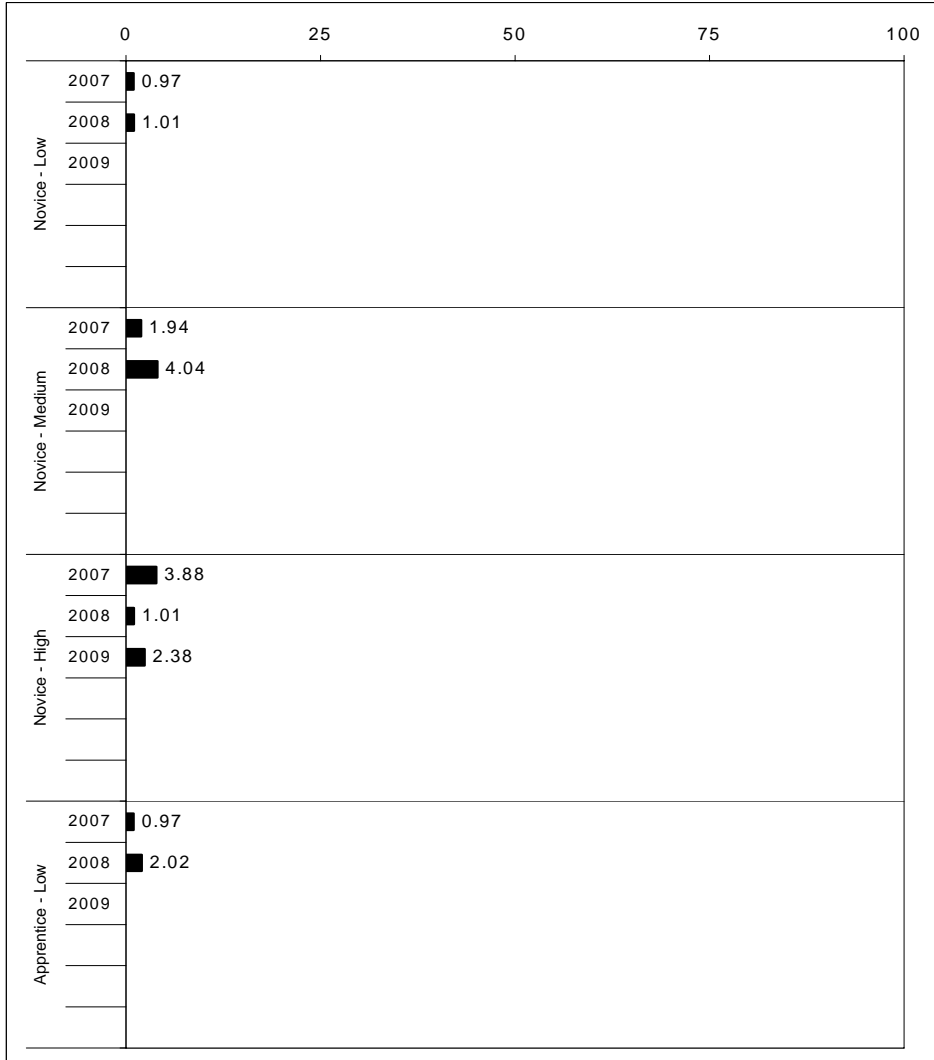
2008-2009
INTERIM PERFORMANCE REPORT
SCIENCE TREND DATA
Performance Level Percents

School: Lansdowne Elementary School

District: Fayette County

Code: 165062

Grade: 04

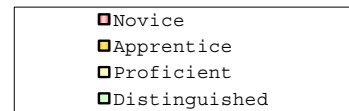
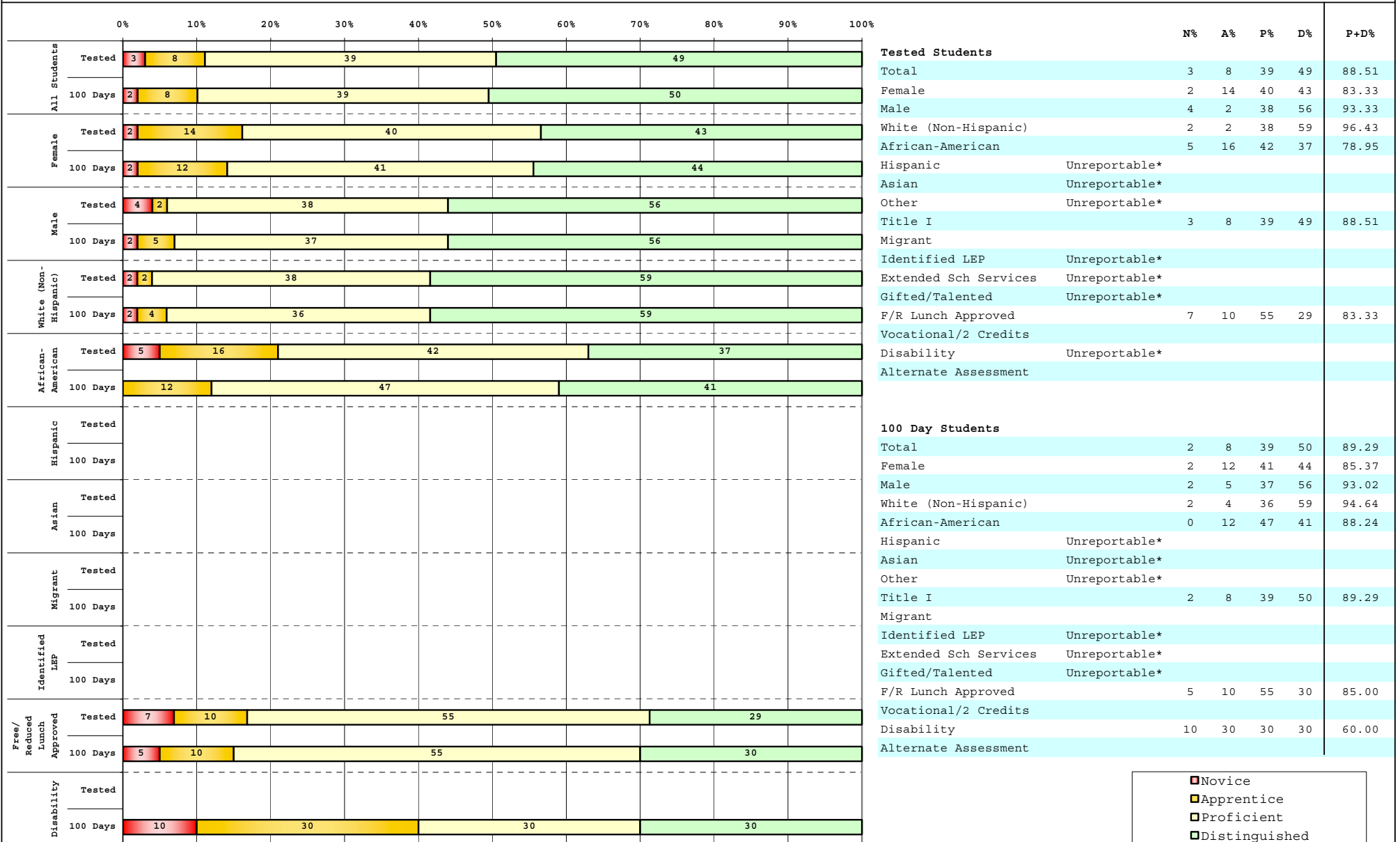


The horizontal bar represents the percent of students scoring at a performance level within a particular year. Percentages may not sum to 100% due to rounding.



**2008-2009
INTERIM PERFORMANCE REPORT
SCIENCE DISAGGREGATION
Performance Level Percents**

School: Lansdowne Elementary School
District: Fayette County
Code: 165062
Grade: 04



Percentage may not sum to 100% due to rounding. 'Unreportable*' indicates subpopulations with fewer than 10 students or subpopulations where all students score at the same performance level.



2008-2009
INTERIM PERFORMANCE REPORT
SCIENCE CORE CONTENT

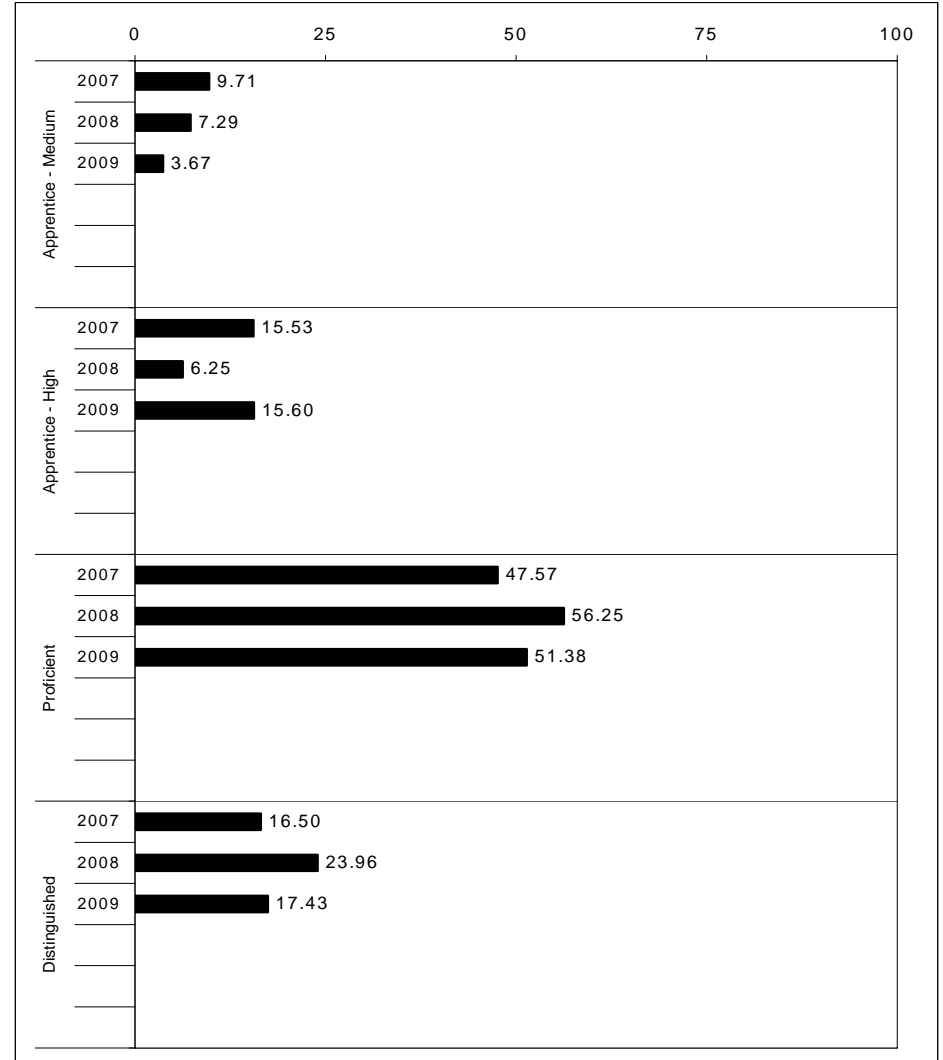
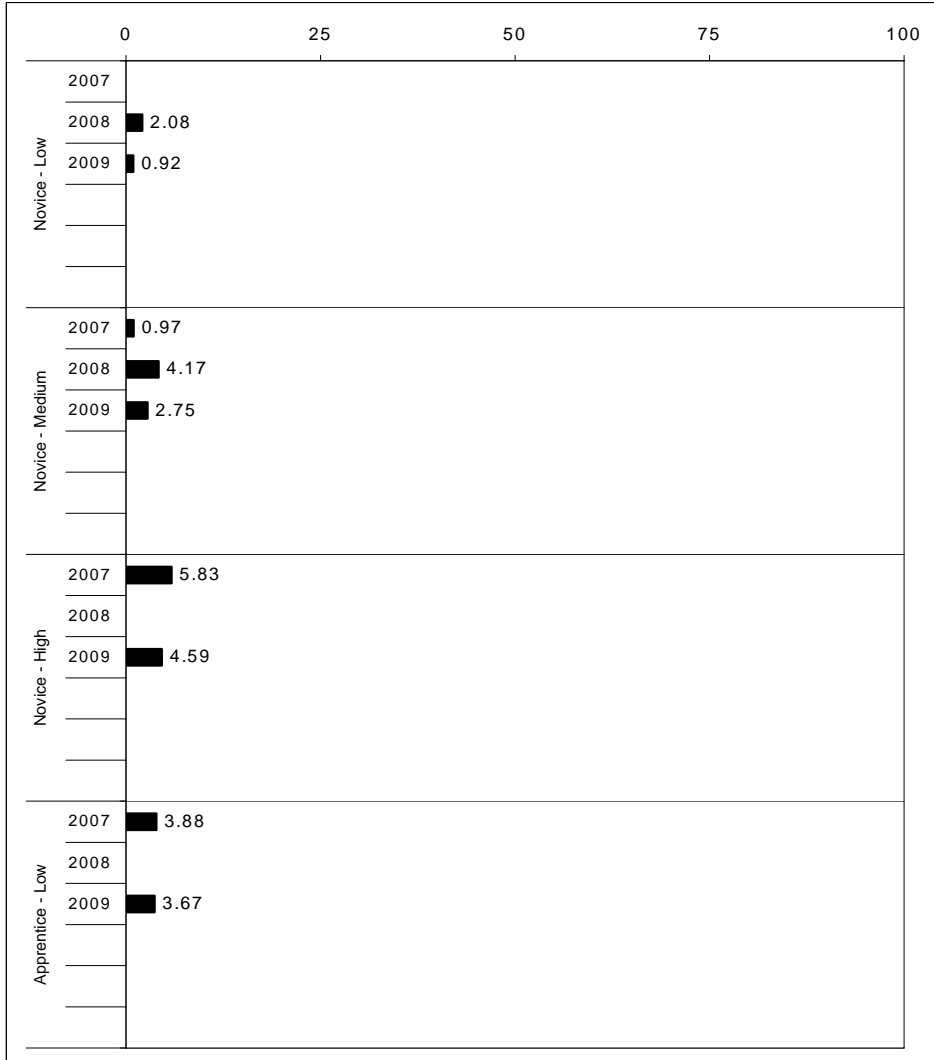
School: Lansdowne Elementary School
 District: Fayette County
 Code: 165062
 Grade: 04

	No. Items	No. Observations	SCHOOL							Mean	Std. Err.	No. Observations	STATE							Mean	School -State Mean
			B	0	1	2	3	4	B				0	1	2	3	4				
OPEN RESPONSE																					
1.x.x - Physical Science	2	23	0	17	17	48	9	9	1.7	0.2	16,337	0	17	19	42	17	5	1.7	0.0		
2.x.x - Earth Space Science	3	115	0	1	14	37	39	9	2.4	0.1	65,658	0	12	22	35	26	4	1.9	0.5		
3.x.x - Biological Science	3	114	0	0	4	23	56	18	2.9	0.1	65,506	0	2	11	33	44	9	2.5	0.4		
4.x.x - Unifying Concepts	2	100	0	1	3	31	38	27	2.9	0.1	57,508	0	3	13	33	35	15	2.5	0.4		
MULTIPLE CHOICE																					
1.x.x - Physical Science	18	672	85	15	0				0.85	0.01	393,336	82	18	0				0.81	0.04		
2.x.x - Earth Space Science	19	684	77	23	0				0.77	0.02	401,488	71	29	0				0.71	0.06		
3.x.x - Biological Science	22	804	85	15	0				0.85	0.01	467,138	78	22	0				0.78	0.07		
4.x.x - Unifying Concepts	14	540	92	7	0				0.92	0.02	319,534	84	15	0				0.84	0.08		



2008-2009
INTERIM PERFORMANCE REPORT
SOCIAL STUDIES TREND DATA
Performance Level Percents

School: Lansdowne Elementary School
 District: Fayette County
 Code: 165062
 Grade: 05

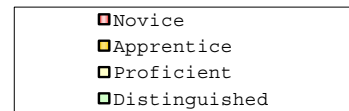
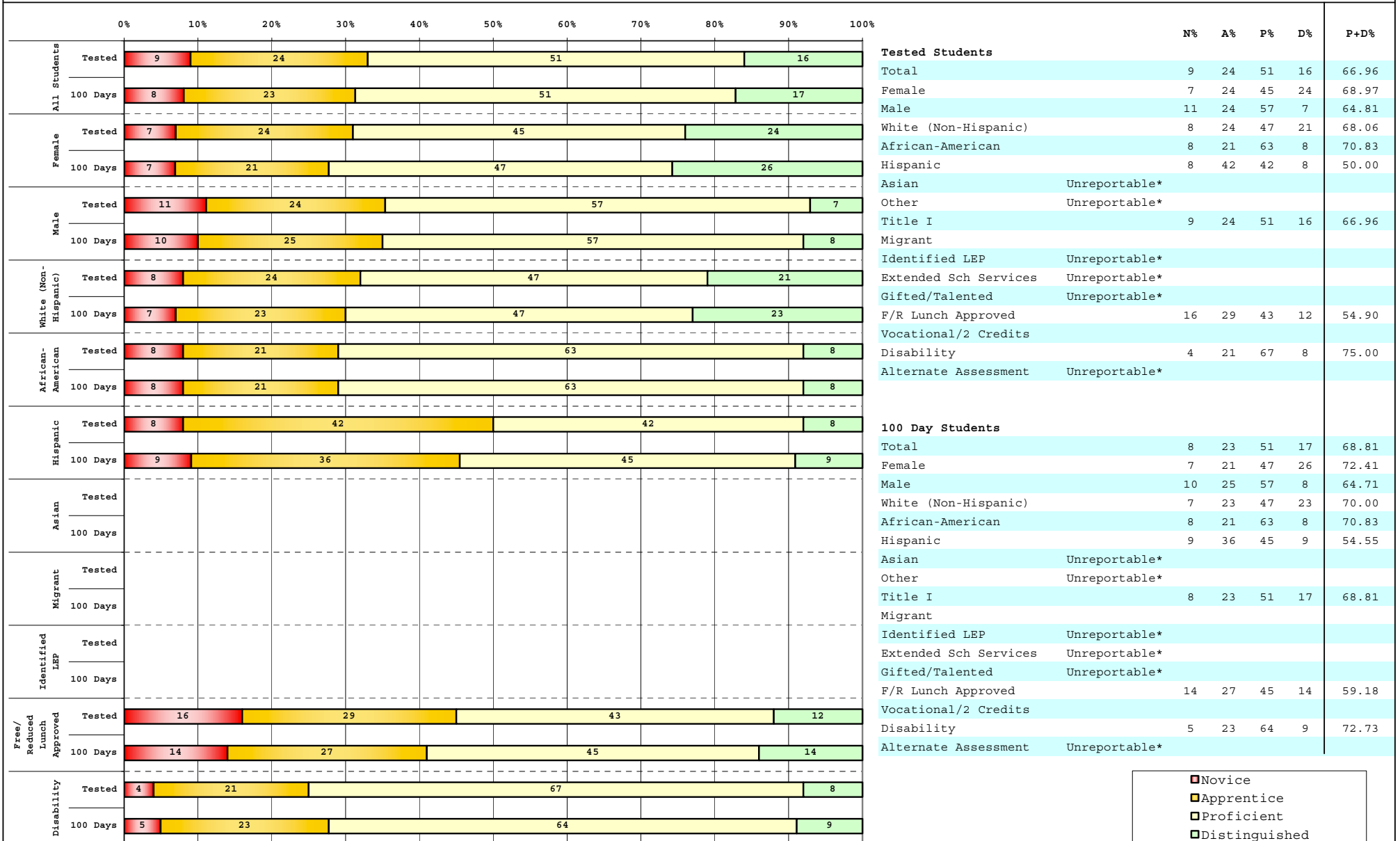


The horizontal bar represents the percent of students scoring at a performance level within a particular year. Percentages may not sum to 100% due to rounding.



2008-2009
INTERIM PERFORMANCE REPORT
SOCIAL STUDIES DISAGGREGATION
Performance Level Percents

School: Lansdowne Elementary School
 District: Fayette County
 Code: 165062
 Grade: 05



Percentage may not sum to 100% due to rounding. 'Unreportable*' indicates subpopulations with fewer than 10 students or subpopulations where all students score at the same performance level.



2008-2009
INTERIM PERFORMANCE REPORT
SOCIAL STUDIES CORE CONTENT

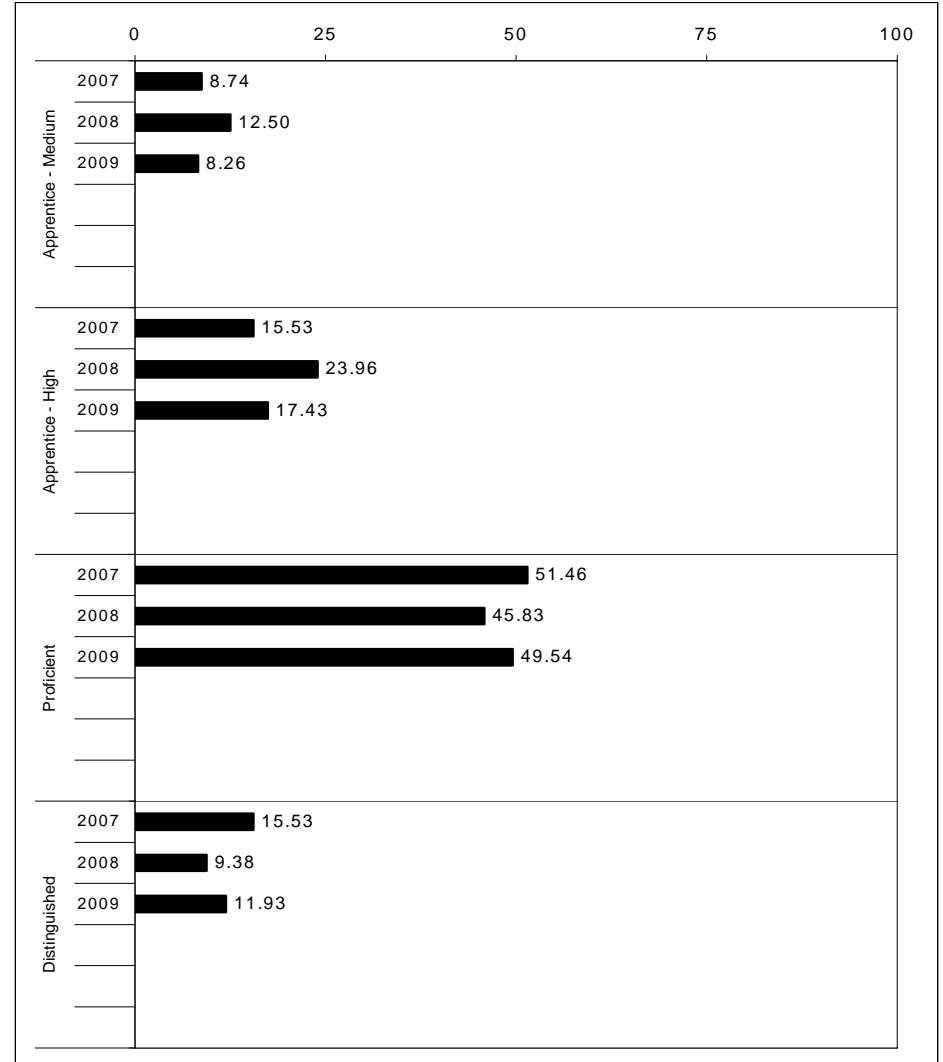
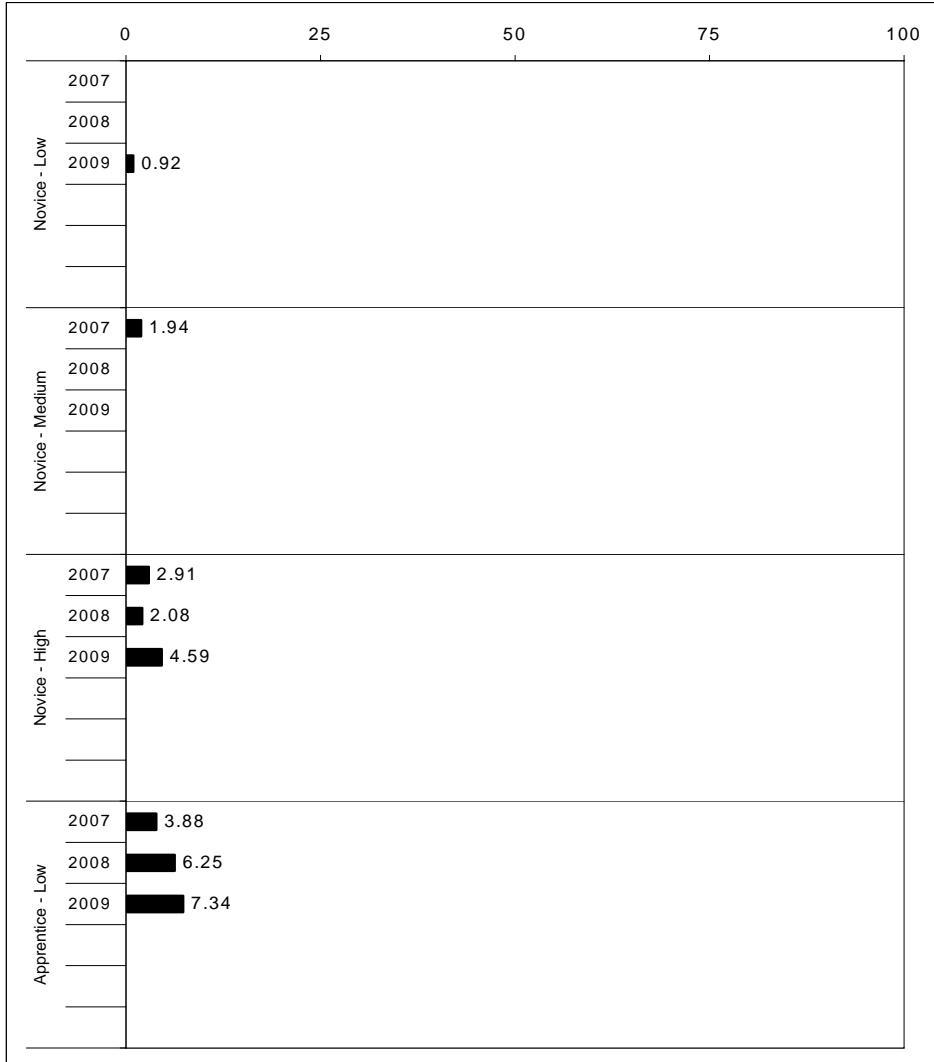
School: Lansdowne Elementary School
 District: Fayette County
 Code: 165062
 Grade: 05

	No. Items	No. Observations	SCHOOL							Mean	Std. Err.	No. Observations	STATE							Mean	School -State Mean
			B	0	1	2	3	4	Percents				B	0	1	2	3	4	Percents		
OPEN RESPONSE																					
1.x.x - Government & Civics	2	124	0	4	33	50	10	3	1.8	0.1	56,903	0	5	37	45	10	2	1.7	0.1		
2.x.x - Cultures & Societies	1	20	0	0	5	65	20	10	2.4	0.2	8,151	0	4	21	56	15	4	1.9	0.5		
3.x.x - Economics	1	108	0	10	24	44	17	5	1.8	0.1	48,828	0	11	33	41	12	3	1.6	0.2		
4.x.x - Geography	2	37	0	14	27	38	19	3	1.7	0.2	16,077	0	9	32	39	17	3	1.7	0.0		
5.x.x - Historical Perspective	3	143	0	2	31	51	15	1	1.8	0.1	65,353	0	7	35	46	10	2	1.7	0.1		
MULTIPLE CHOICE																					
1.x.x - Government & Civics	14	702	68	32	0				0.68	0.02	317,571	66	34	0				0.66	0.02		
2.x.x - Cultures & Societies	11	468	65	35	0				0.65	0.02	211,383	70	30	0				0.69	-0.04		
3.x.x - Economics	11	556	76	24	0				0.76	0.02	252,215	73	27	0				0.73	0.03		
4.x.x - Geography	16	830	66	34	0				0.66	0.02	374,337	66	34	0				0.66	0.00		
5.x.x - Historical Perspective	27	1,296	71	29	0				0.71	0.01	586,076	69	31	0				0.69	0.02		



2008-2009
INTERIM PERFORMANCE REPORT
WRITING ON-DEMAND TREND DATA
Performance Level Percents

School: Lansdowne Elementary School
 District: Fayette County
 Code: 165062
 Grade: 05

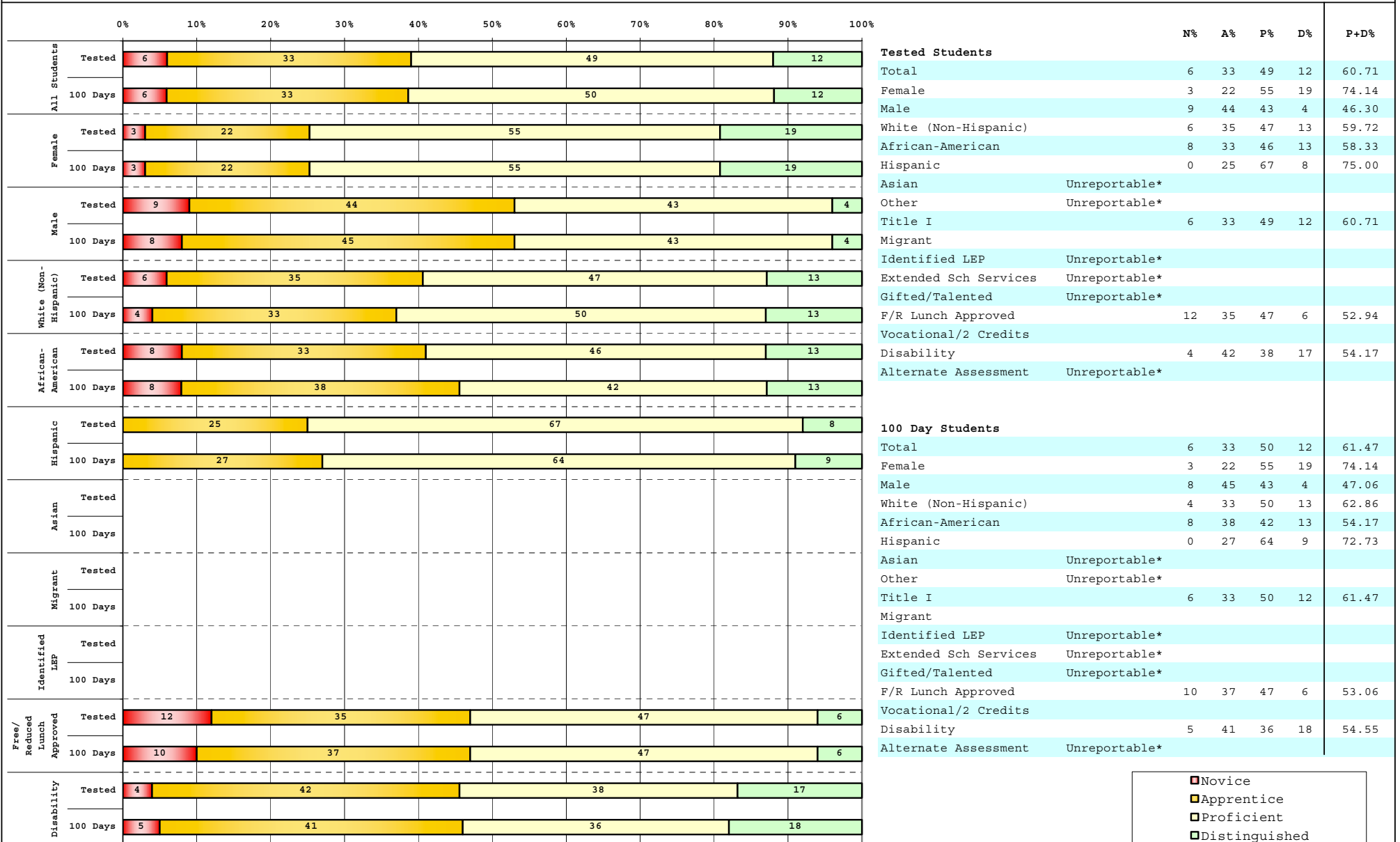


The horizontal bar represents the percent of students scoring at a performance level within a particular year. Percentages may not sum to 100% due to rounding.



**2008-2009
INTERIM PERFORMANCE REPORT
WRITING ON-DEMAND DISAGGREGATION
Performance Level Percents**

School: Lansdowne Elementary School
District: Fayette County
Code: 165062
Grade: 05



■	Novice
■	Apprentice
■	Proficient
■	Distinguished

Percentage may not sum to 100% due to rounding. 'Unreportable*' indicates subpopulations with fewer than 10 students or subpopulations where all students score at the same performance level.



2008-2009
INTERIM PERFORMANCE REPORT
WRITING ON-DEMAND CORE CONTENT

School: Lansdowne Elementary School
 District: Fayette County
 Code: 165062
 Grade: 05

WRITING PROMPT	SCHOOL												STATE												School
	No. Observations	Percents											Mean	Percents											Mean
	B	0	1	2	3	4	5	6	7	8		B	0	1	2	3	4	5	6	7	8				
Inform																									
1.X.X - Content	34	0	3	3	12	6	26	29	18	3	0	4.24	0	1	1	9	9	34	18	21	4	2	4.43	-0.19	
2.X.X - Structure	34	0	3	0	12	9	38	24	12	3	0	4.12	0	1	2	9	10	35	19	19	3	1	4.33	-0.21	
3.X.X - Convention	34	0	3	0	12	12	29	29	15	0	0	4.12	0	0	0	12	11	34	19	19	3	1	4.38	-0.26	
Narrate for a purpose																									
1.X.X - Content	35	0	3	0	6	11	29	29	17	6	0	4.46	0	1	1	10	9	36	18	21	3	1	4.35	0.11	
2.X.X - Structure	35	0	3	0	9	9	31	26	17	6	0	4.40	0	1	2	10	10	37	17	19	3	1	4.27	0.13	
3.X.X - Convention	35	0	0	0	11	9	31	23	20	6	0	4.49	0	0	0	12	10	36	18	19	3	1	4.33	0.16	
Persuade																									
1.X.X - Content	39	0	0	5	0	0	38	10	23	13	10	5.21	0	1	1	8	8	33	19	21	5	3	4.50	0.71	
2.X.X - Structure	39	0	0	5	0	0	38	15	21	10	10	5.13	0	2	2	9	10	33	19	20	5	2	4.42	0.71	
3.X.X - Convention	39	0	0	0	5	3	33	13	26	10	10	5.23	0	0	0	11	10	32	19	20	5	2	4.50	0.73	

MULTIPLE CHOICE	No. Items	SCHOOL						STATE						School
		No. Observations	Percents			Mean	Std. Err.	No. Observations	Percents			Mean	-State Mean	
		Correct	Incorrect	Omit/Mult				Correct	Incorrect	Omit/Mult				
4.x.x - Writing Process	52	1,296	74	27	0	0.73	0.01	585,936	73	27	0	0.73	0.00	
4.10.x - Revising	16	288	64	36	0	0.64	0.03	130,317	66	34	0	0.66	-0.02	
4.11.x - Editing	36	1,008	76	24	0	0.76	0.01	455,619	75	24	0	0.75	0.01	