



Interim Performance Report

In March 2009, the Kentucky General Assembly passed Senate Bill 1 (SB1) that was subsequently signed into law by the Governor. SB1 calls for a significant overhaul of the state's assessment and accountability system. The new assessment system begins in the spring of 2012. The school years of 2008-2009, 2009-2010 and 2010-2011 are described in SB1 as an interim period. This three-year period allows Kentucky to develop the new assessment system and to carry on state and federal testing requirements.

The Interim Performance Report includes the Kentucky Core Content Test (KCCT) in Reading (grades 3-8 and 10), Mathematics (grades 3-8 and 11), Science (grades 4, 7 and 11), Social Studies (grades 5, 8 and 11) and Writing On-Demand (grades 5, 8 and 12). The KCCT is based on the Kentucky Core Content for Assessment (Version 4.1) and contains multiple choice and open response questions. The Writing On-Demand test uses writing prompts that require students to craft a piece of writing in a 60 minute period.

The KCCT is developed under the direction of content advisory committees of Kentucky educators who draft, review and select test questions. All test items are reviewed by a bias review committee to enhance the fairness of items for all Kentucky students.

The KCCT continues to fulfill the requirements of the federal statute known as the No Child Left Behind Act of 2001. A separate accountability report for No Child Left Behind (NCLB) is published by the Kentucky Department of Education.

The Interim Performance Report focuses entirely on the five state-required content areas and provides data for schools or districts. The data in this report is not used directly for state accountability; although, these results can fulfill the requirements of Senate Bill 168 from 2002 and may be used by schools or districts for their own local accountability needs.

Performance standards are based on descriptions of Novice, Apprentice, Proficient and Distinguished (NAPD) student performance levels specific to the content area and grade being assessed. The performance standards, in conjunction with Kentucky's Core Content for Assessment, should allow instruction to better focus on the content area to be taught and on how well students must demonstrate achievement in each content area.

Reporting Changes for 2009

Based on SB1, Kentucky will not be reporting state accountability and academic indices as in the past. The report does have several familiar pages with performance level (NAPD) trend, core content and disaggregation data per content area. Districts and schools will still see distributions of how students scored in the Novice (with sublevels), Apprentice (with sublevels), Proficient and Distinguished performance levels.

Confidentiality Changes

Due to federal regulations around the Family Education Rights and Privacy Act (FERPA), the numbers of students have been removed. Though there is a need to report as much data as possible, there is also a paramount need to maintain the confidential aspects of individual scores. When scores are reported in what is commonly called "small cells" where very few students may be categorized, there is the possibility of revealing individual scores when numbers are reported. Numbers are reported to each district in a confidential report that accompanies the public Interim Performance Report.

**2008-2009
INTERIM PERFORMANCE REPORT**

School: Julius Marks Elementary School
District: Fayette County
Code: 165620
Grade: PRIMARY-05

CONTENTS OF THIS REPORT

Introduction	1
Academic Trend Data	
Reading Results	2-8
Mathematics Results	9-15
Science Results	16-18
Social Studies Results	19-21
Writing Results	22-24

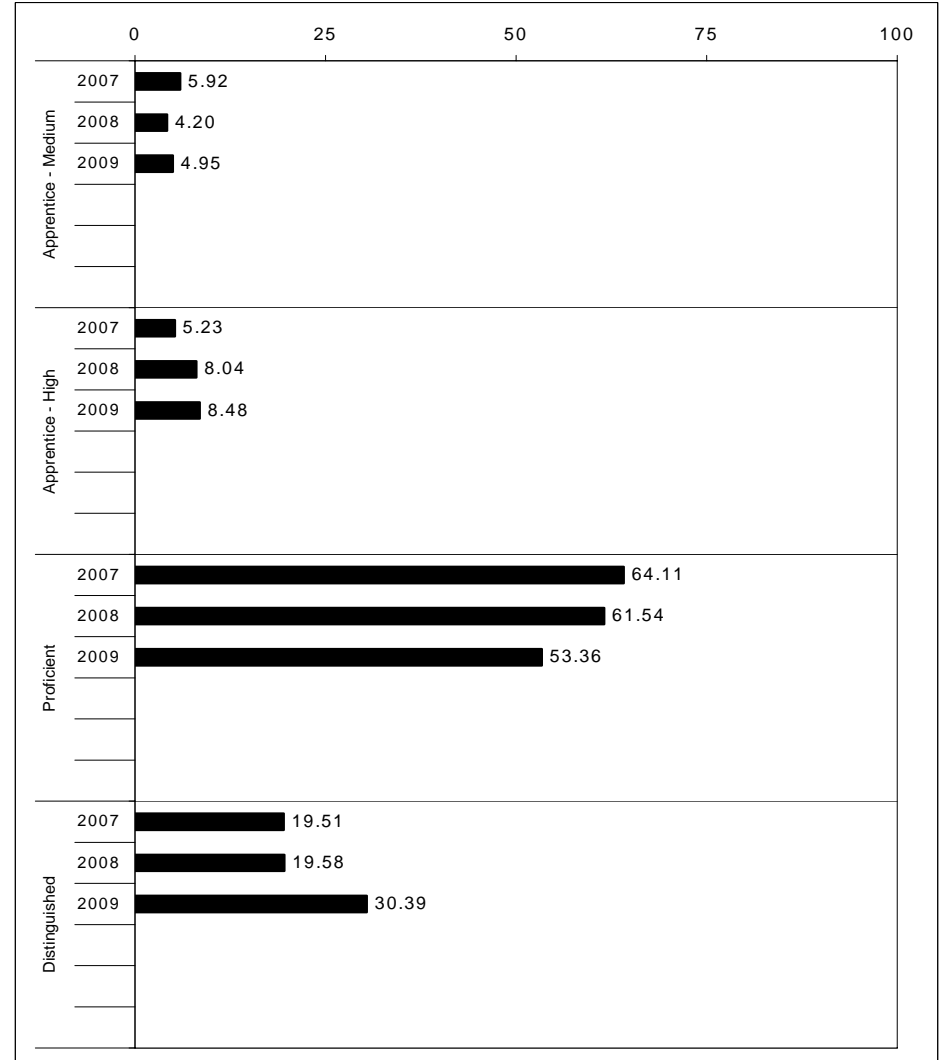
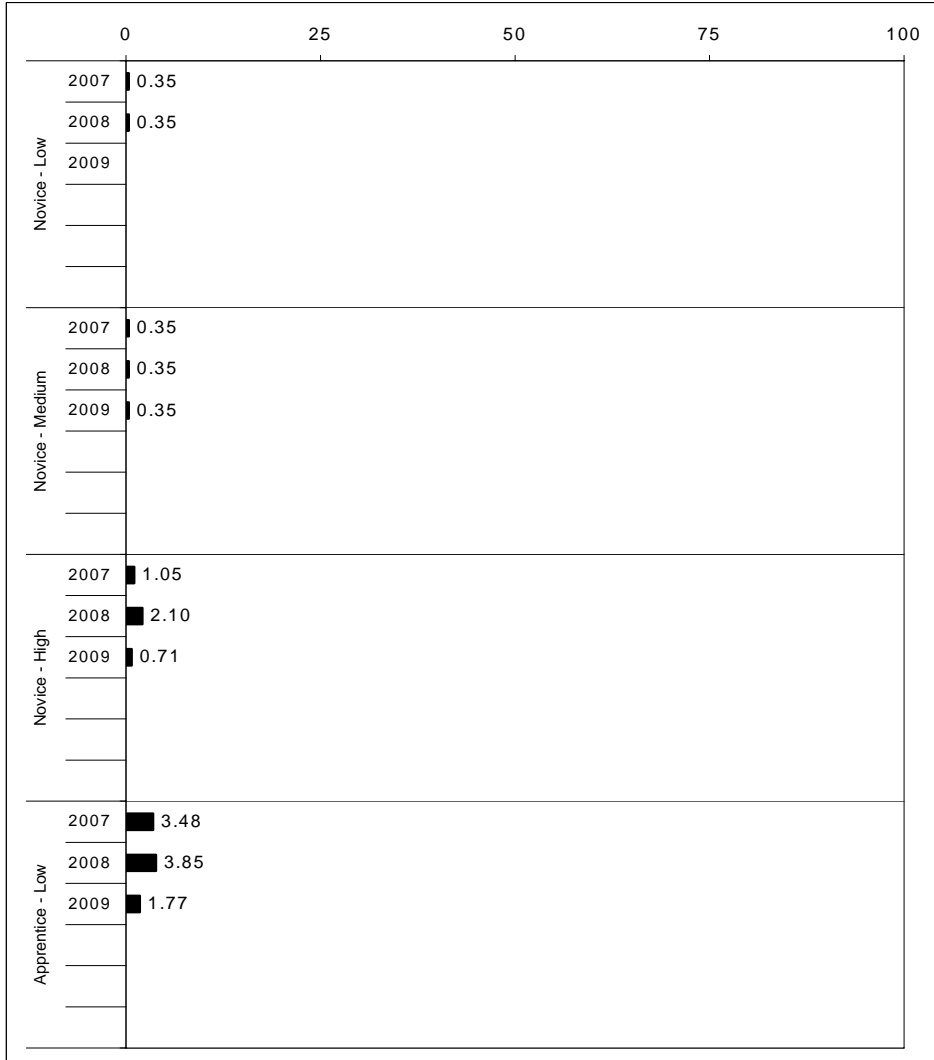
For more information, refer to the 2009 Interim Assessment Interpretative Guide on the Kentucky Department of Education Web site (www.education.ky.gov).





2008-2009
INTERIM PERFORMANCE REPORT
READING TREND DATA
Performance Level Percents

School: Julius Marks Elementary School
 District: Fayette County
 Code: 165620
 Grade: ELEMENTARY



The horizontal bar represents the percent of students scoring at a performance level within a particular year. Percentages may not sum to 100% due to rounding.



**2008-2009
INTERIM PERFORMANCE REPORT
READING DISAGGREGATION
Performance Level Percents**

School: Julius Marks Elementary School
 District: Fayette County
 Code: 165620
 Grade: 03

		0%	10%	20%	30%	40%	50%	60%	70%	80%	90%	100%	N%	A%	P%	D%	P+D%	
All Students	Tested	6	57						37									
	Accountable	5	58						37									
Female	Tested	6	51					43										
	Accountable	6	51					43										
Male	Tested	6	63					31										
	Accountable	4	65					31										
White (Non-Hispanic)	Tested	3	54					43										
	Accountable	3	55					42										
African-American	Tested	15	59				26											
	Accountable	12	60				28											
Hispanic	Tested																	
	Accountable																	
Asian	Tested																	
	Accountable																	
Migrant	Tested																	
	Accountable																	
Identified LEP	Tested																	
	Accountable																	
Free/Reduced Lunch Approved	Tested	10	56					35										
	Accountable	8	58					34										
Disability	Tested	10	70						20									
	Accountable																	

		N%	A%	P%	D%	P+D%
Tested Students						
Total		0	6	57	37	94.06
Female		0	6	51	43	93.88
Male		0	6	63	31	94.23
White (Non-Hispanic)		0	3	54	43	96.83
African-American		0	15	59	26	85.19
Hispanic	Unreportable*					
Asian	Unreportable*					
Other	Unreportable*					
Title I		0	6	57	37	94.06
Migrant						
Identified LEP	Unreportable*					
Extended Sch Services	Unreportable*					
Gifted/Talented		0	0	34	66	100.00
F/R Lunch Approved		0	10	56	35	90.38
Vocational/2 Credits						
Disability		0	10	70	20	90.00
Alternate Assessment						
NCLB Accountable Students						
Total		0	5	58	37	94.90
Female		0	6	51	43	93.88
Male		0	4	65	31	95.92
White (Non-Hispanic)		0	3	55	42	96.77
African-American		0	12	60	28	88.00
Hispanic	Unreportable*					
Asian	Unreportable*					
Other	Unreportable*					
Title I		0	5	58	37	94.90
Migrant						
Identified LEP	Unreportable*					
Extended Sch Services	Unreportable*					
Gifted/Talented		0	0	34	66	100.00
F/R Lunch Approved		0	8	58	34	92.00
Vocational/2 Credits						
Disability	Unreportable*					
Alternate Assessment						

■ Novice
■ Apprentice
■ Proficient
■ Distinguished

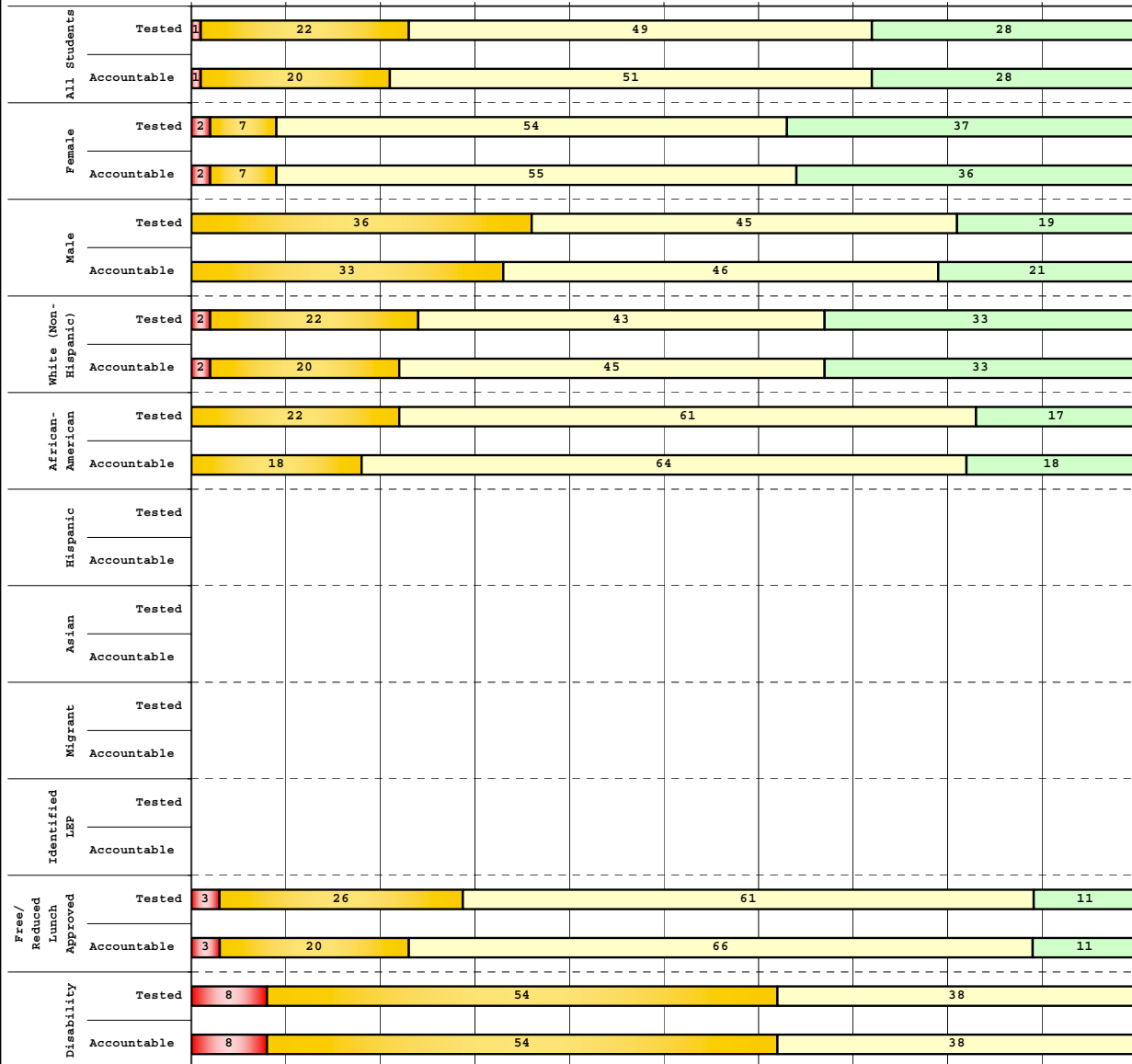
Percentage may not sum to 100% due to rounding. 'Unreportable*' indicates subpopulations with fewer than 10 students or subpopulations where all students score at the same performance level.



**2008-2009
INTERIM PERFORMANCE REPORT
READING DISAGGREGATION
Performance Level Percents**

School: Julius Marks Elementary School
District: Fayette County
Code: 165620
Grade: 04

0% 10% 20% 30% 40% 50% 60% 70% 80% 90% 100%



Tested Students

	N%	A%	P%	D%	P+D%
Total	1	22	49	28	77.11
Female	2	7	54	37	90.24
Male	0	36	45	19	64.29
White (Non-Hispanic)	2	22	43	33	76.47
African-American	0	22	61	17	78.26
Hispanic	Unreportable*				
Asian	Unreportable*				
Other	Unreportable*				
Title I	1	22	49	28	77.11
Migrant	Unreportable*				
Identified LEP	Unreportable*				
Extended Sch Services	Unreportable*				
Gifted/Talented	Unreportable*				
F/R Lunch Approved	3	26	61	11	71.05
Vocational/2 Credits	Unreportable*				
Disability	8	54	38	0	38.46
Alternate Assessment	Unreportable*				

NCLB Accountable Students

	N%	A%	P%	D%	P+D%
Total	1	20	51	28	79.01
Female	2	7	55	36	90.48
Male	0	33	46	21	66.67
White (Non-Hispanic)	2	20	45	33	78.43
African-American	0	18	64	18	81.82
Hispanic	Unreportable*				
Asian	Unreportable*				
Other	Unreportable*				
Title I	1	20	51	28	79.01
Migrant	Unreportable*				
Identified LEP	Unreportable*				
Extended Sch Services	Unreportable*				
Gifted/Talented	Unreportable*				
F/R Lunch Approved	3	20	66	11	77.14
Vocational/2 Credits	Unreportable*				
Disability	8	54	38	0	38.46
Alternate Assessment	Unreportable*				

■ Novice
■ Apprentice
■ Proficient
■ Distinguished

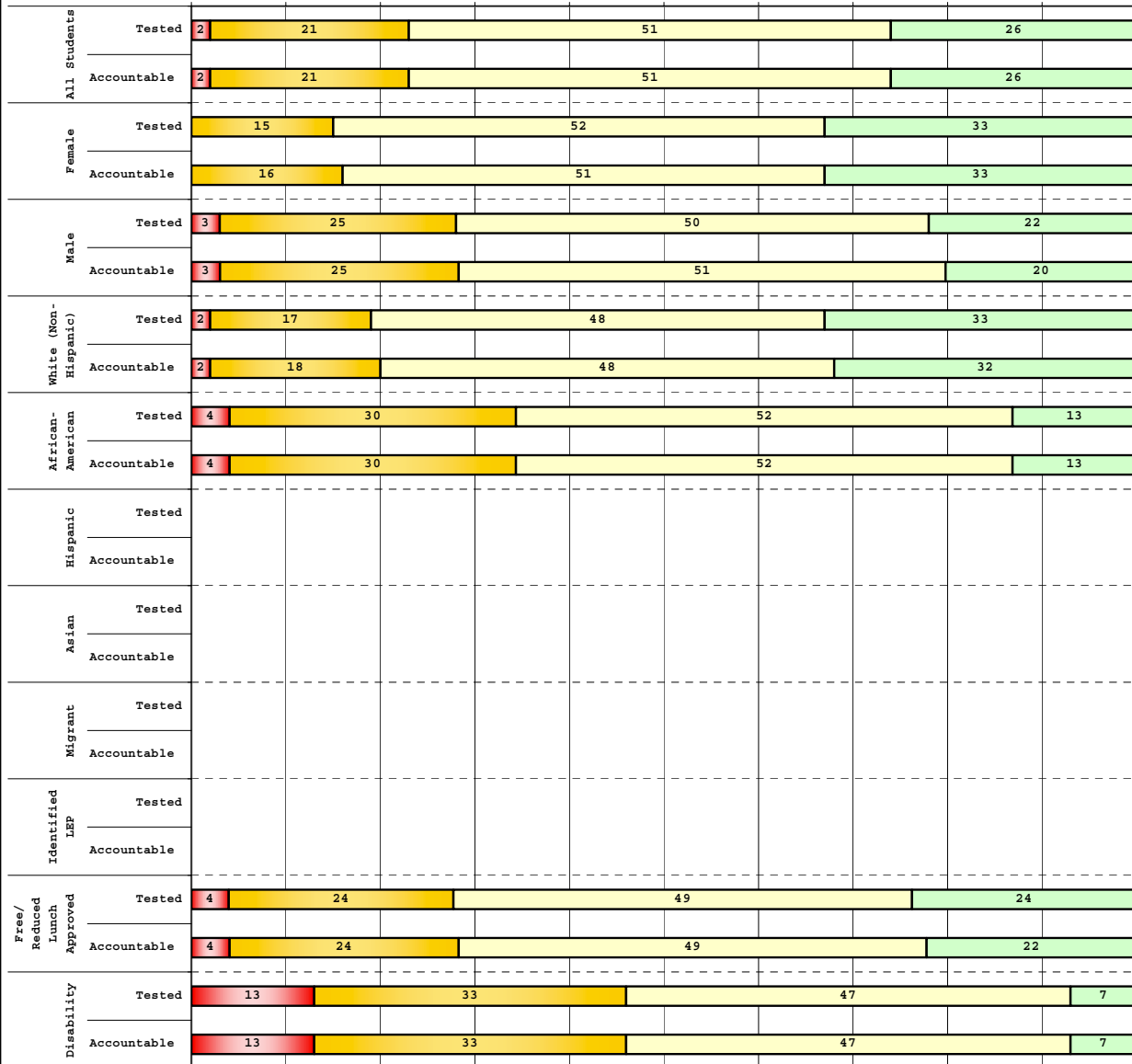
Percentage may not sum to 100% due to rounding. 'Unreportable*' indicates subpopulations with fewer than 10 students or subpopulations where all students score at the same performance level.



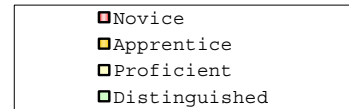
**2008-2009
INTERIM PERFORMANCE REPORT
READING DISAGGREGATION
Performance Level Percents**

School: Julius Marks Elementary School
District: Fayette County
Code: 165620
Grade: 05

0% 10% 20% 30% 40% 50% 60% 70% 80% 90% 100%



Category	N%	A%	P%	D%	P+D%
Tested Students					
Total	2	21	51	26	77.36
Female	0	15	52	33	84.78
Male	3	25	50	22	71.67
White (Non-Hispanic)	2	17	48	33	81.25
African-American	4	30	52	13	65.22
Hispanic	Unreportable*				
Asian	Unreportable*				
Other	0	20	60	20	80.00
Title I	2	21	51	26	77.36
Migrant	Unreportable*				
Identified LEP	Unreportable*				
Extended Sch Services	Unreportable*				
Gifted/Talented	0	0	40	60	100.00
F/R Lunch Approved	4	24	49	24	72.55
Vocational/2 Credits	Unreportable*				
Disability	13	33	47	7	53.33
Alternate Assessment	Unreportable*				
NCLB Accountable Students					
Total	2	21	51	26	76.92
Female	0	16	51	33	84.44
Male	3	25	51	20	71.19
White (Non-Hispanic)	2	18	48	32	80.65
African-American	4	30	52	13	65.22
Hispanic	Unreportable*				
Asian	Unreportable*				
Other	0	20	60	20	80.00
Title I	2	21	51	26	76.92
Migrant	Unreportable*				
Identified LEP	Unreportable*				
Extended Sch Services	Unreportable*				
Gifted/Talented	0	0	40	60	100.00
F/R Lunch Approved	4	24	49	22	71.43
Vocational/2 Credits	Unreportable*				
Disability	13	33	47	7	53.33
Alternate Assessment	Unreportable*				



Percentage may not sum to 100% due to rounding. 'Unreportable*' indicates subpopulations with fewer than 10 students or subpopulations where all students score at the same performance level.



2008-2009
INTERIM PERFORMANCE REPORT
READING CORE CONTENT

School: Julius Marks Elementary School
 District: Fayette County
 Code: 165620
 Grade: 03

	No. Items	No. Observations	SCHOOL								Std. Err.	No. Observations	STATE								School -State Mean
			B	0	1	2	3	4	Mean	B			0	1	2	3	4	Mean			
OPEN RESPONSE																					
2.0.x - Developing Understanding	2	196	0	2	23	49	23	2	2.0	0.1	100,212	0	10	30	44	14	2	1.7	0.3		
3.0.x - Interpreting Text	2	196	0	2	23	49	23	2	2.0	0.1	100,212	0	10	30	44	14	2	1.7	0.3		
MULTIPLE CHOICE																					
1.0.x - Forming a Foundation	32	767	92	8	0				0.92	0.01	392,589	83	17	0				0.83	0.09		
2.0.x - Developing Understanding	89	1,941	88	12	0				0.88	0.01	993,477	80	20	0				0.80	0.08		
3.0.x - Interpreting Text	31	922	87	13	0				0.87	0.01	468,115	77	23	0				0.77	0.10		
5.0.x - Critical Stance	15	400	88	12	0				0.88	0.02	208,359	79	21	0				0.79	0.09		



2008-2009
INTERIM PERFORMANCE REPORT
READING CORE CONTENT

School: Julius Marks Elementary School
 District: Fayette County
 Code: 165620
 Grade: 04

	No. Items	No. Observations	SCHOOL							Mean	Std. Err.	No. Observations	STATE						Mean	School -State Mean
			B	0	1	2	3	4	B				0	1	2	3	4			
OPEN RESPONSE																				
2.0.x - Developing Understanding	5	135	0	1	14	53	25	7	2.2	0.1	81,849	0	3	24	52	18	3	1.9	0.3	
3.0.x - Interpreting Text	6	209	0	3	11	48	27	10	2.3	0.1	131,199	0	4	22	45	23	5	2.0	0.3	
MULTIPLE CHOICE																				
1.0.x - Forming a Foundation	34	645	74	27	0				0.73	0.02	401,452	72	28	0				0.71	0.02	
2.0.x - Developing Understanding	76	1,404	74	26	0				0.74	0.01	868,422	73	27	0				0.73	0.01	
3.0.x - Interpreting Text	29	444	81	19	0				0.81	0.02	278,648	79	21	0				0.79	0.02	
5.0.x - Critical Stance	9	251	77	24	0				0.76	0.03	155,704	74	26	0				0.74	0.02	



**2008-2009
INTERIM PERFORMANCE REPORT
READING CORE CONTENT**

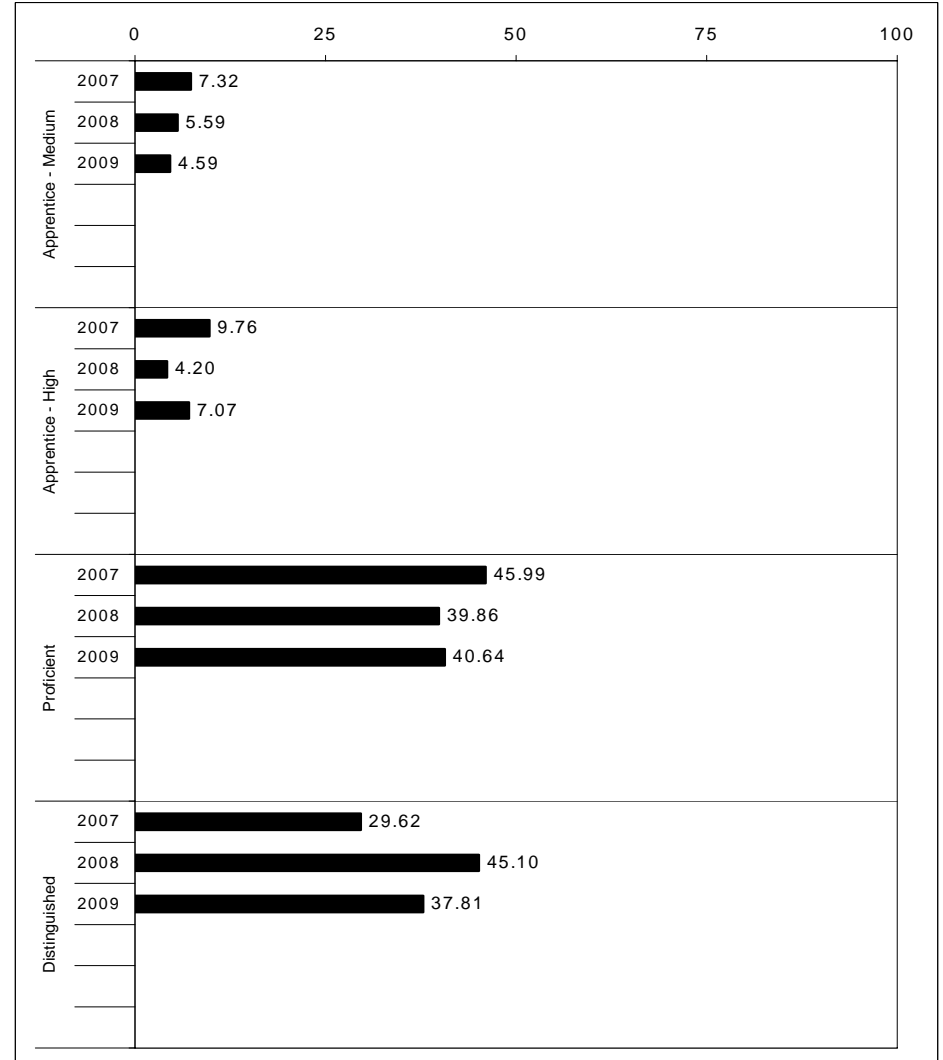
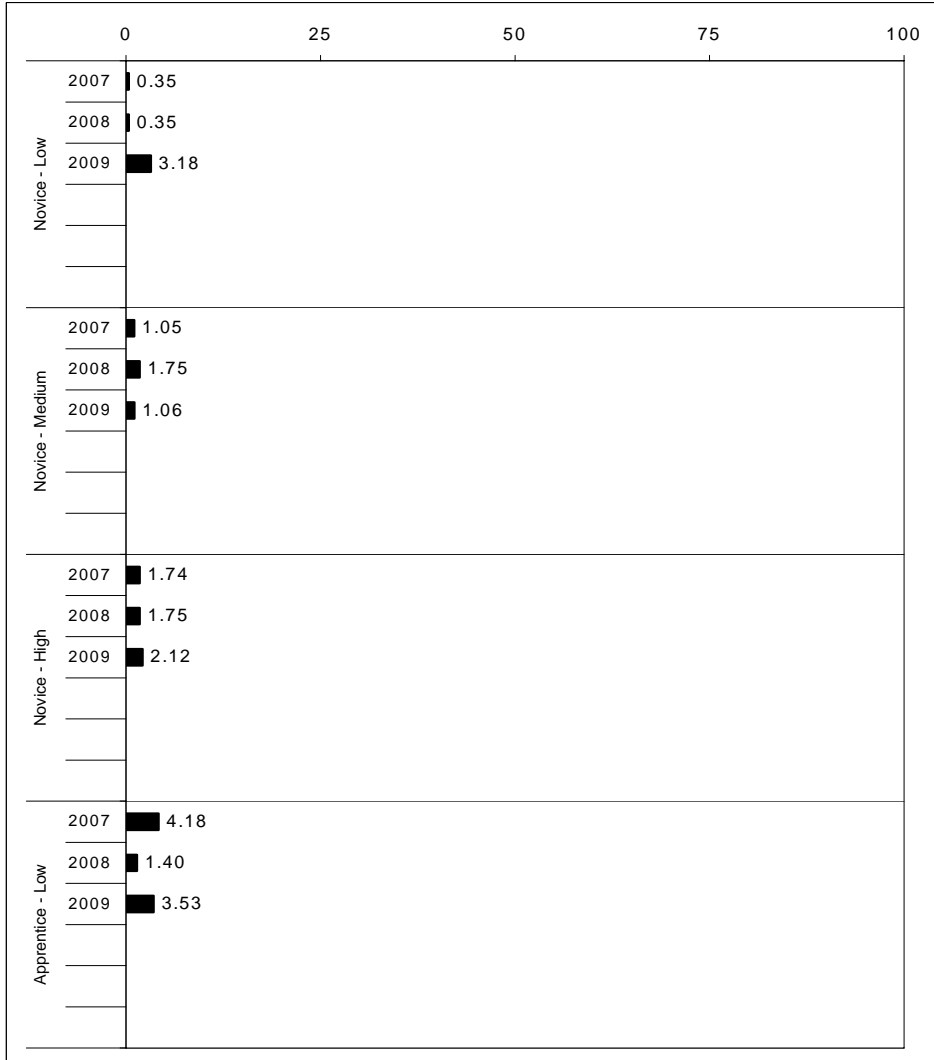
School: Julius Marks Elementary School
 District: Fayette County
 Code: 165620
 Grade: 05

	No. Items	No. Observations	SCHOOL								STATE								School -State Mean
			Percents						Mean	Std. Err.	Percents						Mean		
			B	0	1	2	3	4					No. Observations	B	0	1		2	3
OPEN RESPONSE																			
2.0.x - Developing Understanding	6	187	0	3	11	48	28	10	2.3	0.1	89,507	0	5	23	48	20	5	2.0	0.3
3.0.x - Interpreting Text	6	277	0	2	14	53	23	8	2.2	0.1	130,403	0	5	21	50	19	4	2.0	0.2
MULTIPLE CHOICE																			
1.0.x - Forming a Foundation	28	572	74	26	0			0.74	0.02	268,187	74	26	0			0.74	0.00		
2.0.x - Developing Understanding	71	1,734	82	18	0			0.82	0.01	823,068	80	20	0			0.80	0.02		
3.0.x - Interpreting Text	27	715	85	15	0			0.85	0.01	341,653	81	19	0			0.81	0.04		
5.0.x - Critical Stance	17	635	84	16	0			0.84	0.02	300,671	75	25	0			0.75	0.09		



2008-2009
INTERIM PERFORMANCE REPORT
MATHEMATICS TREND DATA
Performance Level Percents

School: Julius Marks Elementary School
 District: Fayette County
 Code: 165620
 Grade: ELEMENTARY



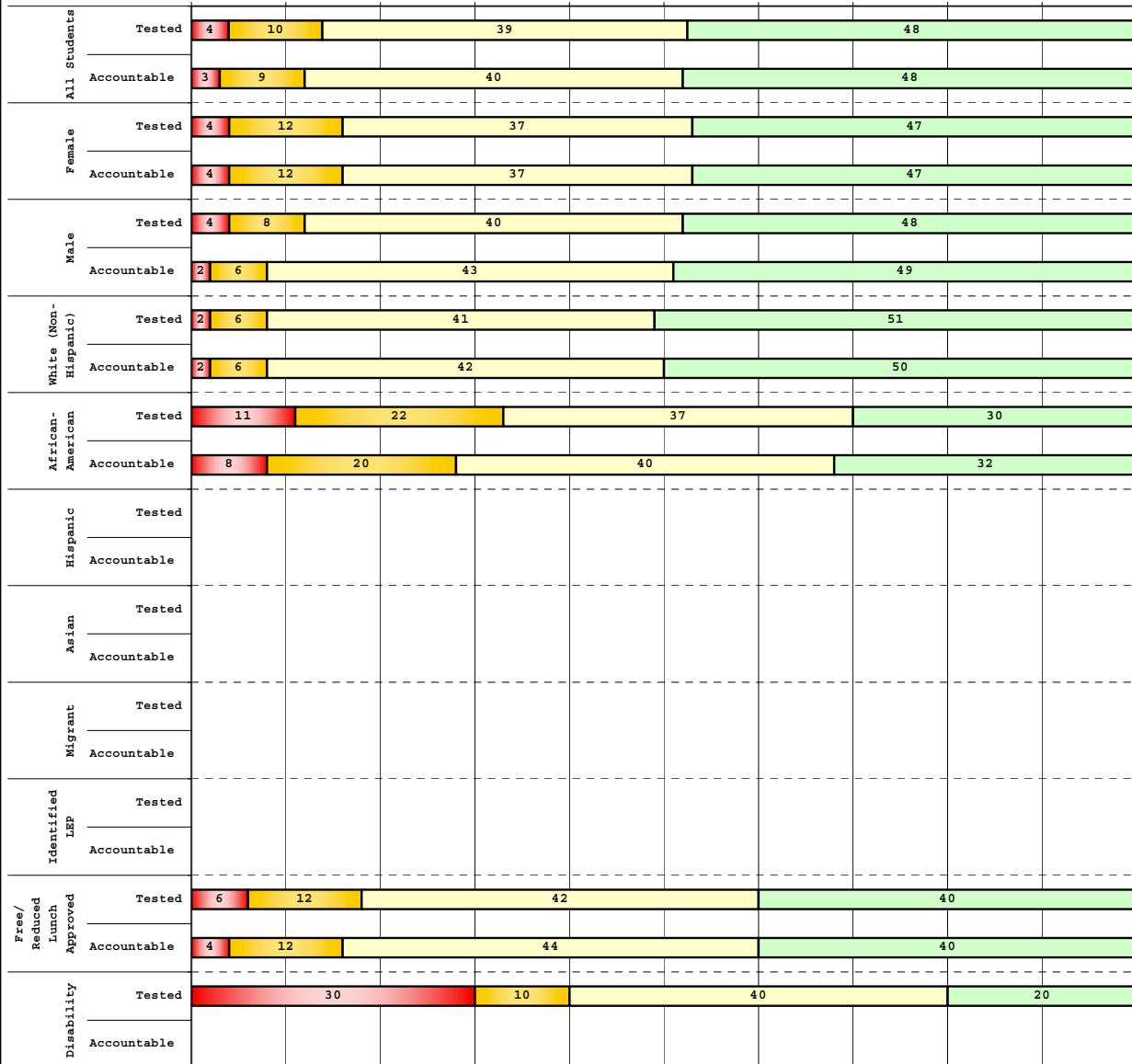
The horizontal bar represents the percent of students scoring at a performance level within a particular year. Percentages may not sum to 100% due to rounding.



2008-2009
INTERIM PERFORMANCE REPORT
MATHEMATICS DISAGGREGATION
Performance Level Percents

School: Julius Marks Elementary School
 District: Fayette County
 Code: 165620
 Grade: 03

0% 10% 20% 30% 40% 50% 60% 70% 80% 90% 100%



	N%	A%	P%	D%	P+D%
Tested Students					
Total	4	10	39	48	86.14
Female	4	12	37	47	83.67
Male	4	8	40	48	88.46
White (Non-Hispanic)	2	6	41	51	92.06
African-American	11	22	37	30	66.67
Hispanic	Unreportable*				
Asian	Unreportable*				
Other	Unreportable*				
Title I	4	10	39	48	86.14
Migrant					
Identified LEP	Unreportable*				
Extended Sch Services	Unreportable*				
Gifted/Talented	0	0	14	86	100.00
F/R Lunch Approved	6	12	42	40	82.69
Vocational/2 Credits					
Disability	30	10	40	20	60.00
Alternate Assessment					
NCLB Accountable Students					
Total	3	9	40	48	87.76
Female	4	12	37	47	83.67
Male	2	6	43	49	91.84
White (Non-Hispanic)	2	6	42	50	91.94
African-American	8	20	40	32	72.00
Hispanic	Unreportable*				
Asian	Unreportable*				
Other	Unreportable*				
Title I	3	9	40	48	87.76
Migrant					
Identified LEP	Unreportable*				
Extended Sch Services	Unreportable*				
Gifted/Talented	0	0	14	86	100.00
F/R Lunch Approved	4	12	44	40	84.00
Vocational/2 Credits					
Disability	Unreportable*				
Alternate Assessment					

■ Novice
■ Apprentice
■ Proficient
■ Distinguished

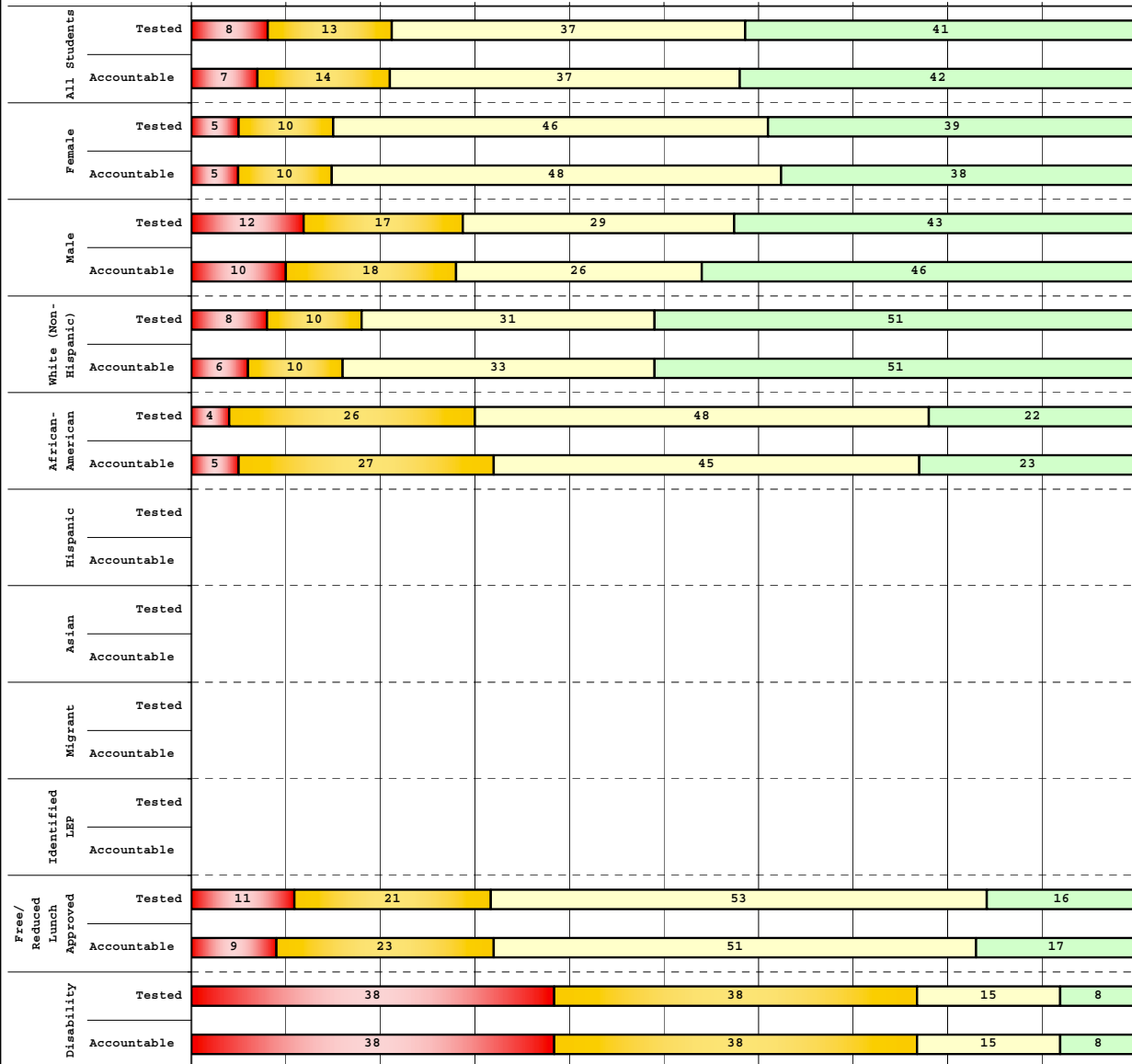
Percentage may not sum to 100% due to rounding. 'Unreportable*' indicates subpopulations with fewer than 10 students or subpopulations where all students score at the same performance level.



**2008-2009
INTERIM PERFORMANCE REPORT
MATHEMATICS DISAGGREGATION
Performance Level Percents**

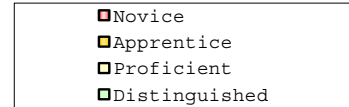
School: Julius Marks Elementary School
District: Fayette County
Code: 165620
Grade: 04

0% 10% 20% 30% 40% 50% 60% 70% 80% 90% 100%



Tested Students

	N%	A%	P%	D%	P+D%
Total	8	13	37	41	78.31
Female	5	10	46	39	85.37
Male	12	17	29	43	71.43
White (Non-Hispanic)	8	10	31	51	82.35
African-American	4	26	48	22	69.57
Hispanic	Unreportable*				
Asian	Unreportable*				
Other	Unreportable*				
Title I	8	13	37	41	78.31
Migrant	Unreportable*				
Identified LEP	Unreportable*				
Extended Sch Services	Unreportable*				
Gifted/Talented	Unreportable*				
F/R Lunch Approved	11	21	53	16	68.42
Vocational/2 Credits	Unreportable*				
Disability	38	38	15	8	23.08
Alternate Assessment	Unreportable*				
NCLB Accountable Students					
Total	7	14	37	42	79.01
Female	5	10	48	38	85.71
Male	10	18	26	46	71.79
White (Non-Hispanic)	6	10	33	51	84.31
African-American	5	27	45	23	68.18
Hispanic	Unreportable*				
Asian	Unreportable*				
Other	Unreportable*				
Title I	7	14	37	42	79.01
Migrant	Unreportable*				
Identified LEP	Unreportable*				
Extended Sch Services	Unreportable*				
Gifted/Talented	Unreportable*				
F/R Lunch Approved	9	23	51	17	68.57
Vocational/2 Credits	Unreportable*				
Disability	38	38	15	8	23.08
Alternate Assessment	Unreportable*				



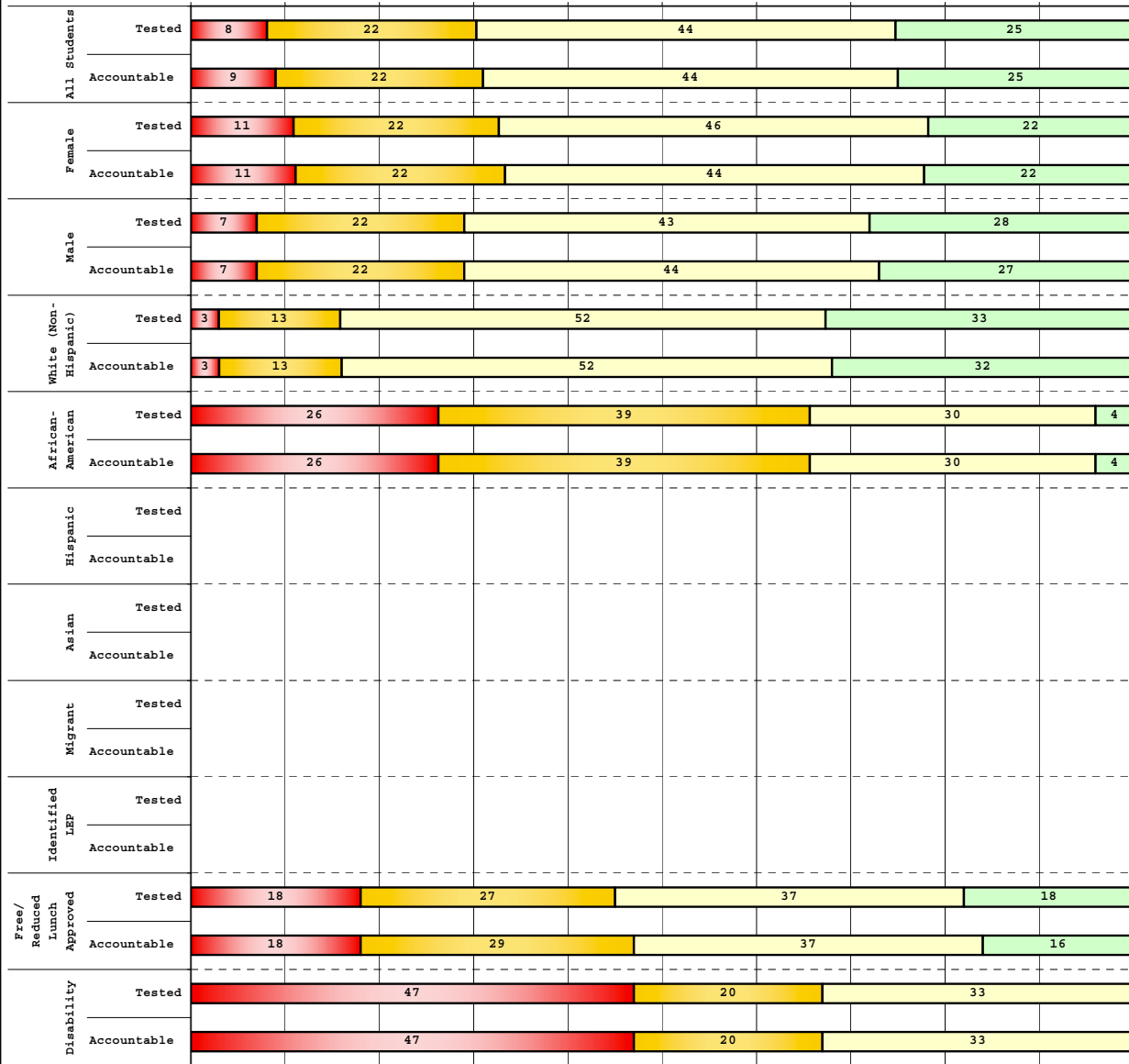
Percentage may not sum to 100% due to rounding. 'Unreportable*' indicates subpopulations with fewer than 10 students or subpopulations where all students score at the same performance level.



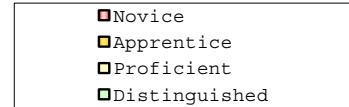
**2008-2009
INTERIM PERFORMANCE REPORT
MATHEMATICS DISAGGREGATION
Performance Level Percents**

School: Julius Marks Elementary School
District: Fayette County
Code: 165620
Grade: 05

0% 10% 20% 30% 40% 50% 60% 70% 80% 90% 100%



	N%	A%	P%	D%	P+D%
Tested Students					
Total	8	22	44	25	69.81
Female	11	22	46	22	67.39
Male	7	22	43	28	71.67
White (Non-Hispanic)	3	13	52	33	84.38
African-American	26	39	30	4	34.78
Hispanic	Unreportable*				
Asian	Unreportable*				
Other	10	40	20	30	50.00
Title I	8	22	44	25	69.81
Migrant					
Identified LEP	Unreportable*				
Extended Sch Services	Unreportable*				
Gifted/Talented	0	10	20	70	90.00
F/R Lunch Approved	18	27	37	18	54.90
Vocational/2 Credits					
Disability	47	20	33	0	33.33
Alternate Assessment	Unreportable*				
NCLB Accountable Students					
Total	9	22	44	25	69.23
Female	11	22	44	22	66.67
Male	7	22	44	27	71.19
White (Non-Hispanic)	3	13	52	32	83.87
African-American	26	39	30	4	34.78
Hispanic	Unreportable*				
Asian	Unreportable*				
Other	10	40	20	30	50.00
Title I	9	22	44	25	69.23
Migrant					
Identified LEP	Unreportable*				
Extended Sch Services	Unreportable*				
Gifted/Talented	0	10	20	70	90.00
F/R Lunch Approved	18	29	37	16	53.06
Vocational/2 Credits					
Disability	47	20	33	0	33.33
Alternate Assessment	Unreportable*				



Percentage may not sum to 100% due to rounding. 'Unreportable*' indicates subpopulations with fewer than 10 students or subpopulations where all students score at the same performance level.



2008-2009
INTERIM PERFORMANCE REPORT
MATHEMATICS CORE CONTENT

School: Julius Marks Elementary School
 District: Fayette County
 Code: 165620
 Grade: 03

	No. Items	No. Observations	SCHOOL								STATE								School -State Mean
			Percents						Mean	Std. Err.	Percents						Mean		
			B	0	1	2	3	4					No. Observations	B	0	1		2	3
OPEN RESPONSE																			
1.x.x - Number Prop Oper	5	245	0	9	33	33	14	11	1.9	0.1	125,243	0	21	35	26	10	8	1.5	0.4
2.x.x - Measurement	1	16	0	0	6	25	25	44	3.1	0.4	8,325	0	25	5	30	14	25	2.1	1.0
3.x.x - Geometry	2	32	0	3	16	50	13	19	2.3	0.2	16,777	0	8	24	35	13	20	2.1	0.2
4.x.x - Data Analysis & Probabilit	1	98	0	5	2	17	27	49	3.1	0.1	50,106	0	9	13	19	27	32	2.6	0.5
5.x.x - Algebraic Thinking	2	115	0	7	4	16	26	47	3.0	0.1	58,404	0	9	14	19	28	31	2.6	0.4
MULTIPLE CHOICE																			
1.x.x - Number Prop Oper	32	1,584	Correct	Incorrect	Omit/Mult				0.83	0.01	810,106	Correct	Incorrect	Omit/Mult				0.74	0.09
2.x.x - Measurement	7	360	83	17	0				0.85	0.02	183,647	74	26	0				0.81	0.04
3.x.x - Geometry	18	784	85	15	0				0.89	0.01	400,848	81	18	0				0.85	0.04
4.x.x - Data Analysis & Probabilit	8	375	89	11	0				0.76	0.02	192,126	85	15	0				0.69	0.07
5.x.x - Algebraic Thinking	11	425	76	24	0				0.81	0.02	217,089	69	31	0				0.78	0.03



2008-2009
INTERIM PERFORMANCE REPORT
MATHEMATICS CORE CONTENT

School: Julius Marks Elementary School
 District: Fayette County
 Code: 165620
 Grade: 04

	No. Items	No. Observations	SCHOOL							Mean	Std. Err.	No. Observations	STATE						Mean	School -State Mean
			B	0	1	2	3	4	B				0	1	2	3	4			
OPEN RESPONSE																				
1.x.x - Number Prop Oper	4	121	0	14	24	30	16	17	2.0	0.1	73,656	0	17	24	29	19	12	1.9	0.1	
2.x.x - Measurement	1	14	0	36	29	7	21	7	1.4	0.4	8,195	0	43	13	10	20	13	1.5	-0.1	
3.x.x - Geometry	2	93	0	4	18	22	16	40	2.7	0.1	57,352	0	11	20	17	19	33	2.4	0.3	
4.x.x - Data Analysis & Probabilit	1	13	0	0	54	23	15	8	1.8	0.3	8,152	0	5	36	29	23	6	1.9	-0.1	
5.x.x - Algebraic Thinking	2	89	0	6	24	31	27	12	2.2	0.1	57,508	0	5	27	32	25	11	2.1	0.1	
MULTIPLE CHOICE																				
1.x.x - Number Prop Oper	31	1,057	Correct	Incorrect	Omit/Mult				0.68	0.01	664,194	Correct	Incorrect	Omit/Mult				0.67	0.01	
2.x.x - Measurement	7	227	58	42	0				0.58	0.03	139,170	62	38	0				0.62	-0.04	
3.x.x - Geometry	14	448	83	17	0				0.83	0.02	278,460	77	23	0				0.77	0.06	
4.x.x - Data Analysis & Probabilit	12	485	79	21	0				0.79	0.02	303,394	71	29	0				0.71	0.08	
5.x.x - Algebraic Thinking	11	414	69	31	0				0.69	0.02	253,829	69	31	0				0.69	0.00	



**2008-2009
INTERIM PERFORMANCE REPORT
MATHEMATICS CORE CONTENT**

School: Julius Marks Elementary School
 District: Fayette County
 Code: 165620
 Grade: 05

	No. Items	No. Observations	SCHOOL								STATE								School -State Mean	
			Percents						Mean	Std. Err.	Percents						Mean			
			B	0	1	2	3	4					No. Observations	B	0	1		2	3	4
OPEN RESPONSE																				
1.x.x - Number Prop Oper	4	158	0	4	17	23	21	35	2.7	0.1	73,199	0	8	20	18	25	29	2.5	0.2	
2.x.x - Measurement	1	16	0	25	31	19	19	6	1.5	0.3	8,380	0	37	30	13	10	11	1.3	0.2	
3.x.x - Geometry	2	119	0	5	17	32	29	17	2.4	0.1	56,900	0	6	24	30	26	14	2.2	0.2	
4.x.x - Data Analysis & Probabilit	1	103	0	17	20	17	20	24	2.1	0.1	48,828	0	15	18	15	17	35	2.4	-0.3	
5.x.x - Algebraic Thinking	1	16	0	13	19	6	25	38	2.6	0.4	8,005	0	13	15	20	17	35	2.5	0.1	
MULTIPLE CHOICE																				
1.x.x - Number Prop Oper	29	1,355	<u>Correct</u>	<u>Incorrect</u>	<u>Omit/Mult</u>				0.59	0.01	643,144	<u>Correct</u>	<u>Incorrect</u>	<u>Omit/Mult</u>				0.63	-0.04	
2.x.x - Measurement	9	325	59	41	0				0.62	0.03	154,489	63	37	0				0.62	0.00	
3.x.x - Geometry	14	586	62	38	0				0.82	0.02	276,516	62	38	0				0.78	0.04	
4.x.x - Data Analysis & Probabilit	11	531	82	18	0				0.62	0.02	252,212	78	22	0				0.64	-0.02	
5.x.x - Algebraic Thinking	10	515	62	38	0				0.60	0.02	244,140	64	36	0				0.65	-0.05	
			60	40	0							65	35	0						



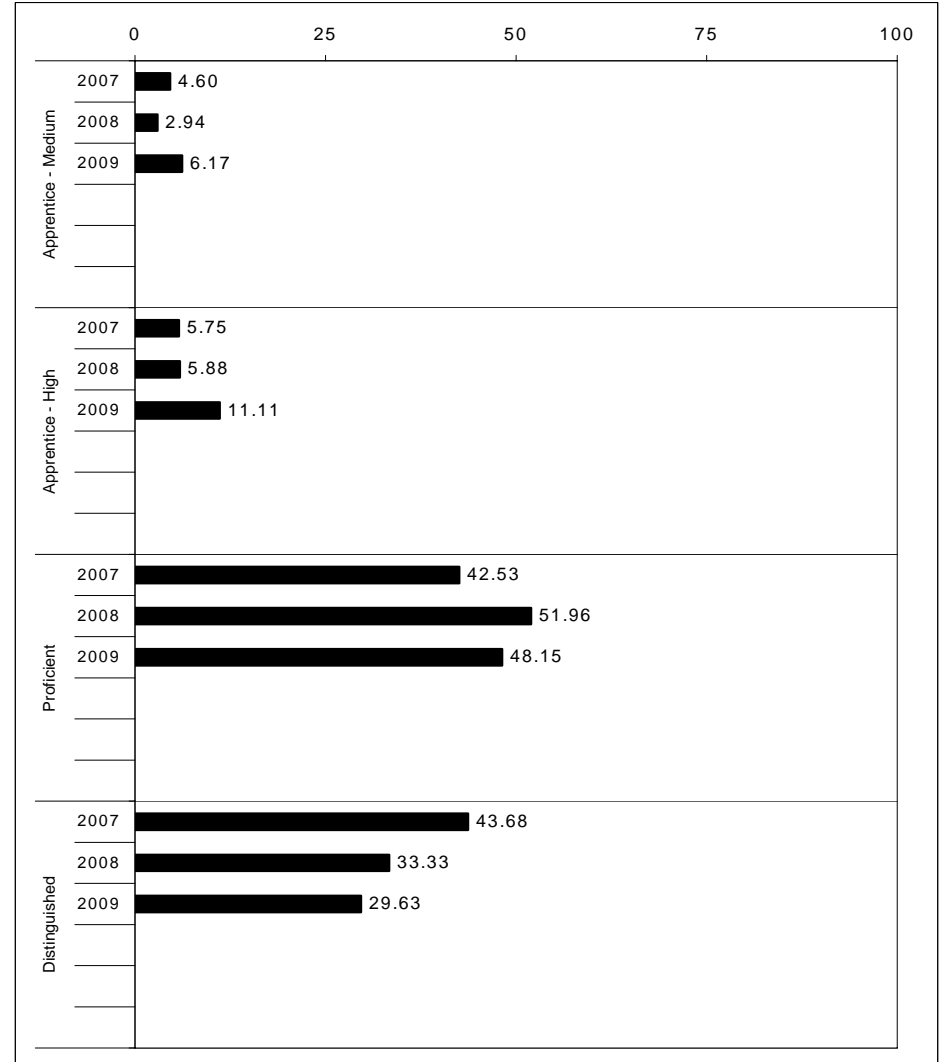
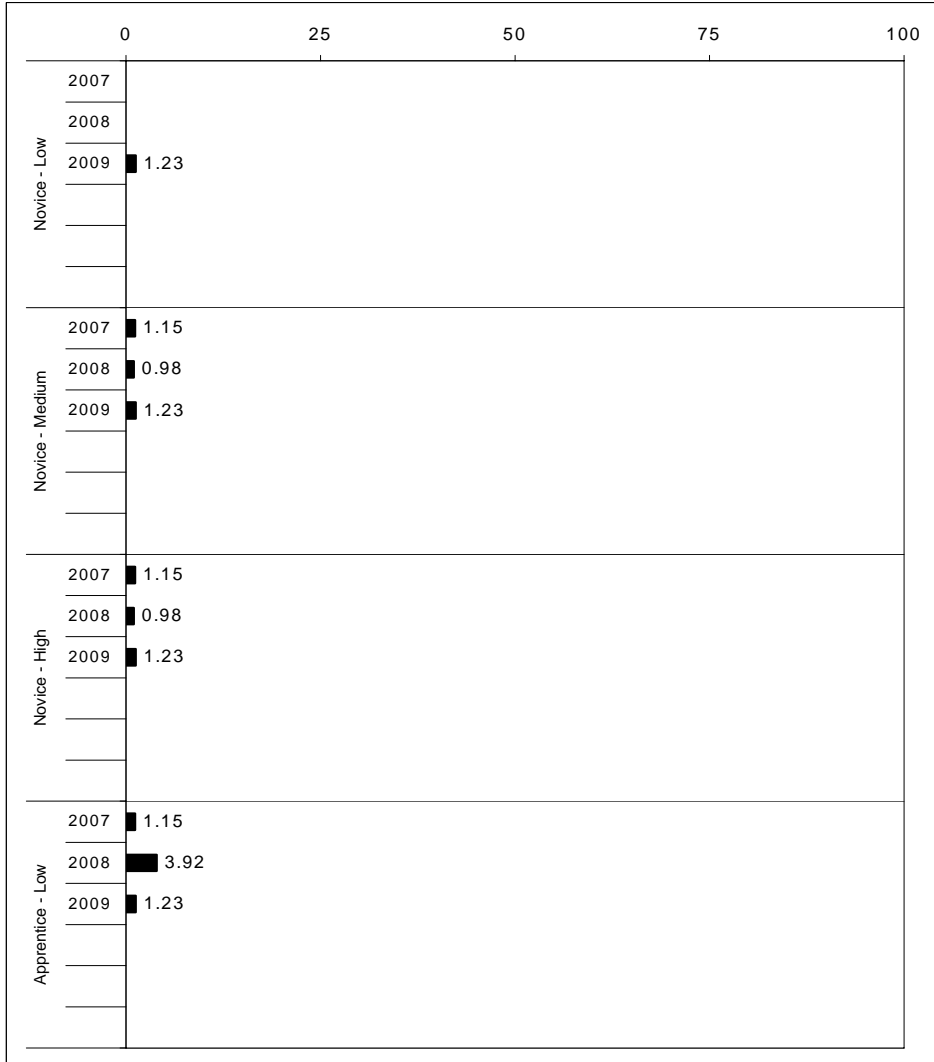
2008-2009
INTERIM PERFORMANCE REPORT
SCIENCE TREND DATA
Performance Level Percents

School: Julius Marks Elementary School

District: Fayette County

Code: 165620

Grade: 04

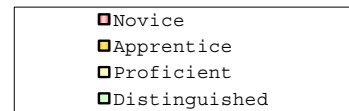
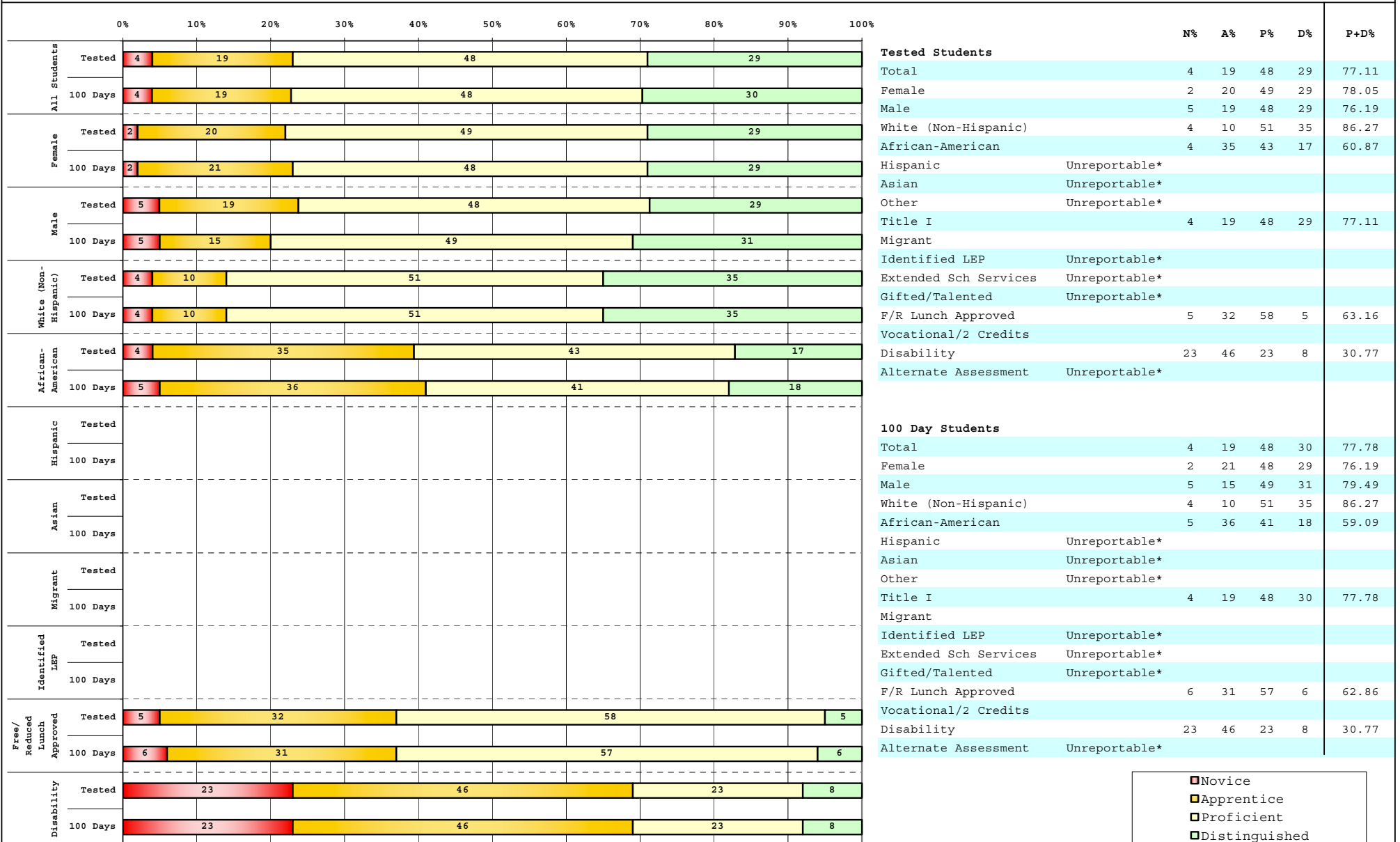


The horizontal bar represents the percent of students scoring at a performance level within a particular year. Percentages may not sum to 100% due to rounding.



**2008-2009
INTERIM PERFORMANCE REPORT
SCIENCE DISAGGREGATION
Performance Level Percents**

School: Julius Marks Elementary School
District: Fayette County
Code: 165620
Grade: 04



Percentage may not sum to 100% due to rounding. 'Unreportable*' indicates subpopulations with fewer than 10 students or subpopulations where all students score at the same performance level.



2008-2009
INTERIM PERFORMANCE REPORT
SCIENCE CORE CONTENT

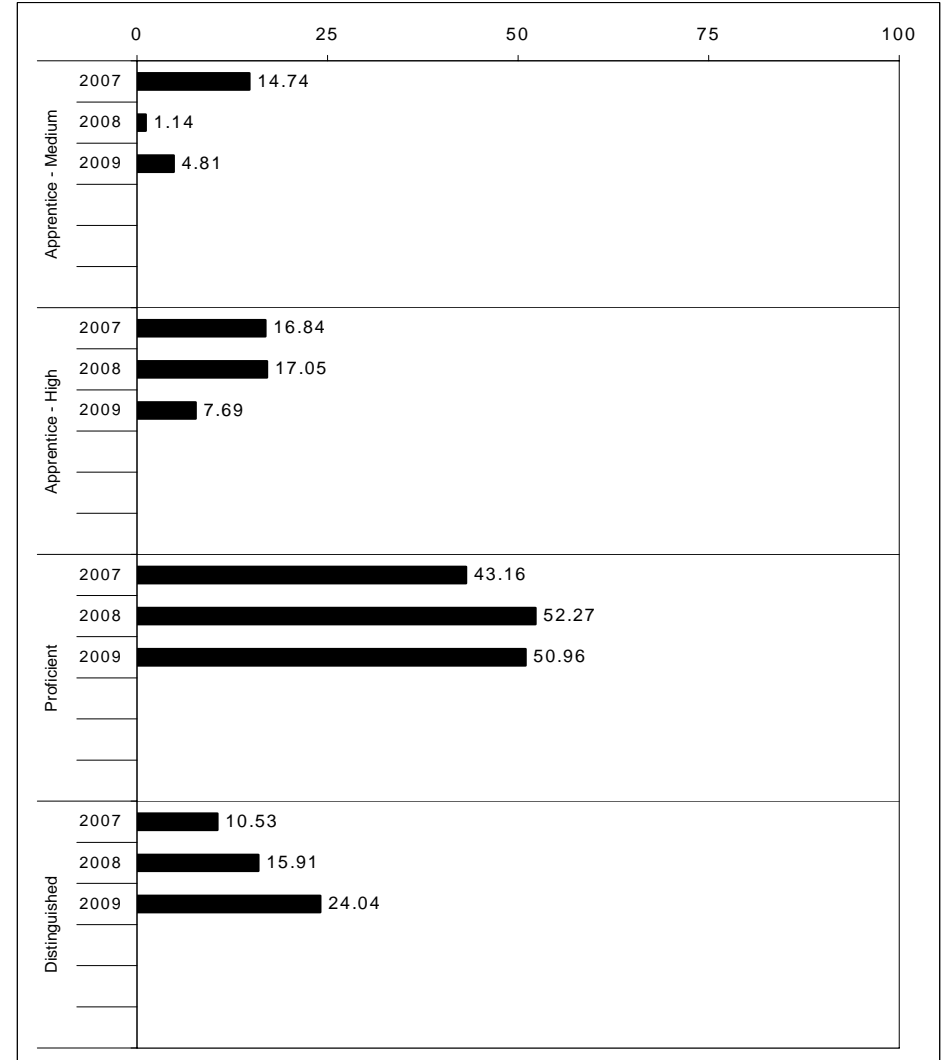
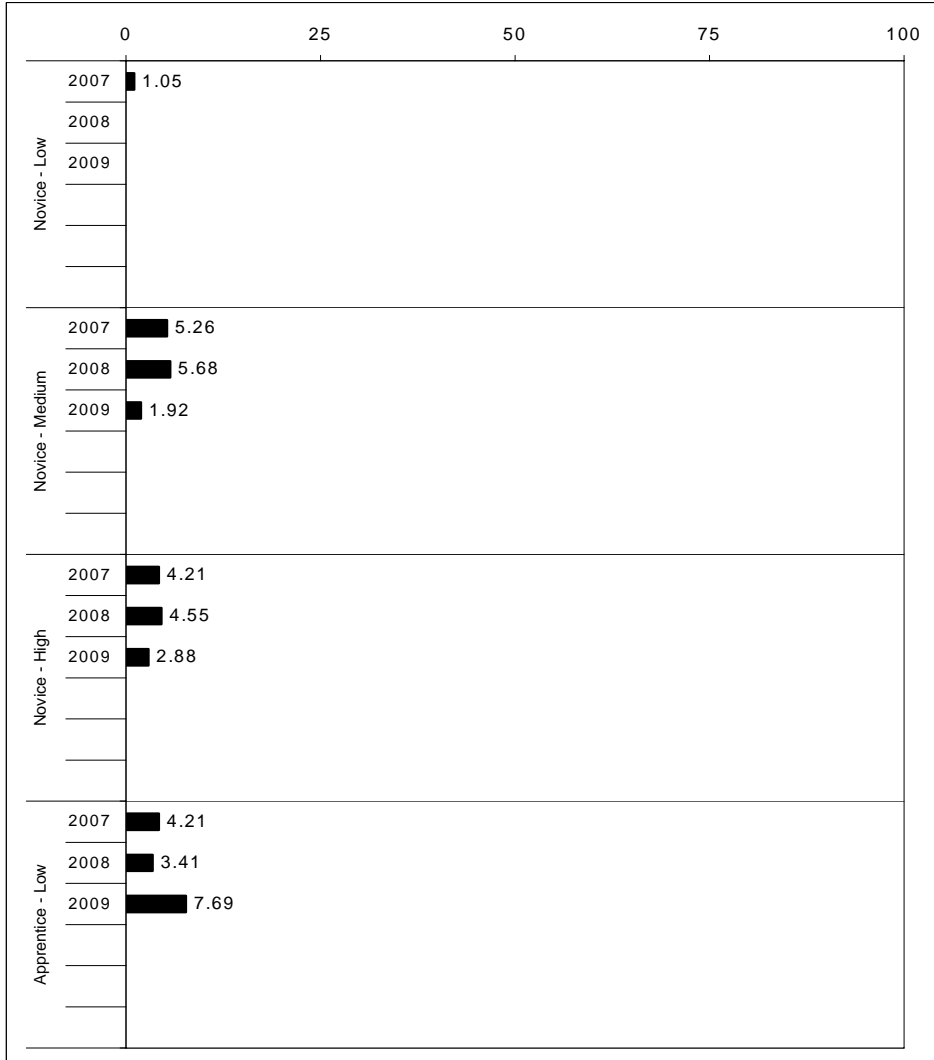
School: Julius Marks Elementary School
 District: Fayette County
 Code: 165620
 Grade: 04

	No. Items	No. Observations	SCHOOL							Mean	Std. Err.	No. Observations	STATE						Mean	School -State Mean
			B	0	1	2	3	4	B				0	1	2	3	4			
OPEN RESPONSE																				
1.x.x - Physical Science	2	27	0	7	22	37	22	11	2.1	0.2	16,337	0	17	19	42	17	5	1.7	0.4	
2.x.x - Earth Space Science	3	104	0	8	27	36	26	4	1.9	0.1	65,658	0	12	22	35	26	4	1.9	0.0	
3.x.x - Biological Science	3	106	0	1	4	30	58	7	2.7	0.1	65,506	0	2	11	33	44	9	2.5	0.2	
4.x.x - Unifying Concepts	2	89	0	2	10	29	35	24	2.7	0.1	57,508	0	3	13	33	35	15	2.5	0.2	
MULTIPLE CHOICE																				
			Correct	Incorrect	Omit/Mult							Correct	Incorrect	Omit/Mult						
1.x.x - Physical Science	18	632	83	17	0		0.83	0.02			393,336	82	18	0			0.81	0.02		
2.x.x - Earth Space Science	19	645	75	25	0		0.75	0.02			401,488	71	29	0			0.71	0.04		
3.x.x - Biological Science	22	749	77	23	0		0.77	0.02			467,138	78	22	0			0.78	-0.01		
4.x.x - Unifying Concepts	14	515	91	9	0		0.91	0.02			319,534	84	15	0			0.84	0.07		



2008-2009
INTERIM PERFORMANCE REPORT
SOCIAL STUDIES TREND DATA
Performance Level Percents

School: Julius Marks Elementary School
 District: Fayette County
 Code: 165620
 Grade: 05



The horizontal bar represents the percent of students scoring at a performance level within a particular year. Percentages may not sum to 100% due to rounding.



**2008-2009
INTERIM PERFORMANCE REPORT
SOCIAL STUDIES DISAGGREGATION
Performance Level Percents**

School: Julius Marks Elementary School
District: Fayette County
Code: 165620
Grade: 05

		0%	10%	20%	30%	40%	50%	60%	70%	80%	90%	100%	N%	A%	P%	D%	P+D%		
All Students	Tested	5	20	51	25									Tested Students					
	100 Days	5	20	51	24									Total	5	20	51	25	75.47
Female	Tested	7	22	41	30									Female	7	22	41	30	71.74
	100 Days	7	22	40	31									Male	3	18	58	20	78.33
Male	Tested	3	18	58	20									White (Non-Hispanic)	2	9	61	28	89.06
	100 Days	3	19	59	19									African-American	17	35	35	13	47.83
White (Non-Hispanic)	Tested	2	9	61	28									Hispanic	Unreportable*				
	100 Days	2	10	61	27									Asian	Unreportable*				
African-American	Tested	17	35	35	13									Other	0	40	30	30	60.00
	100 Days	17	35	35	13									Title I	5	20	51	25	75.47
Hispanic	Tested												Migrant						
	100 Days												Identified LEP	Unreportable*					
Asian	Tested												Extended Sch Services	Unreportable*					
	100 Days												Gifted/Talented	0	0	40	60	100.00	
Migrant	Tested												F/R Lunch Approved	10	24	47	20	66.67	
	100 Days												Vocational/2 Credits						
Identified LEP	Tested												Disability	33	47	13	7	20.00	
	100 Days												Alternate Assessment	Unreportable*					
Free/Reduced Lunch Approved	Tested	10	24	47	20									100 Day Students					
	100 Days	10	24	47	18									Total	5	20	51	24	75.00
Disability	Tested	33	47	13	7									Female	7	22	40	31	71.11
	100 Days	33	47	13	7									Male	3	19	59	19	77.97

■	Novice
■	Apprentice
■	Proficient
■	Distinguished

Percentage may not sum to 100% due to rounding. 'Unreportable*' indicates subpopulations with fewer than 10 students or subpopulations where all students score at the same performance level.



2008-2009
INTERIM PERFORMANCE REPORT
SOCIAL STUDIES CORE CONTENT

School: Julius Marks Elementary School
 District: Fayette County
 Code: 165620
 Grade: 05

	No. Items	No. Observations	SCHOOL							Mean	Std. Err.	No. Observations	STATE							Mean	School -State Mean
			B	0	1	2	3	4	Percents				B	0	1	2	3	4	Percents		
OPEN RESPONSE																					
1.x.x - Government & Civics	2	122	0	4	32	49	13	2	1.8	0.1	56,903	0	5	37	45	10	2	1.7	0.1		
2.x.x - Cultures & Societies	1	17	0	0	0	76	12	12	2.4	0.2	8,151	0	4	21	56	15	4	1.9	0.5		
3.x.x - Economics	1	103	0	4	21	39	31	5	2.1	0.1	48,828	0	11	33	41	12	3	1.6	0.5		
4.x.x - Geography	2	32	0	0	28	34	34	3	2.1	0.2	16,077	0	9	32	39	17	3	1.7	0.4		
5.x.x - Historical Perspective	3	138	0	2	27	49	21	1	1.9	0.1	65,353	0	7	35	46	10	2	1.7	0.2		
MULTIPLE CHOICE																					
1.x.x - Government & Civics	14	667	65	35	0				0.65	0.02	317,571	66	34	0				0.66	-0.01		
2.x.x - Cultures & Societies	11	446	72	28	0				0.72	0.02	211,383	70	30	0				0.69	0.03		
3.x.x - Economics	11	534	75	26	0				0.75	0.02	252,215	73	27	0				0.73	0.02		
4.x.x - Geography	16	786	69	31	0				0.69	0.02	374,337	66	34	0				0.66	0.03		
5.x.x - Historical Perspective	27	1,239	72	28	0				0.72	0.01	586,076	69	31	0				0.69	0.03		



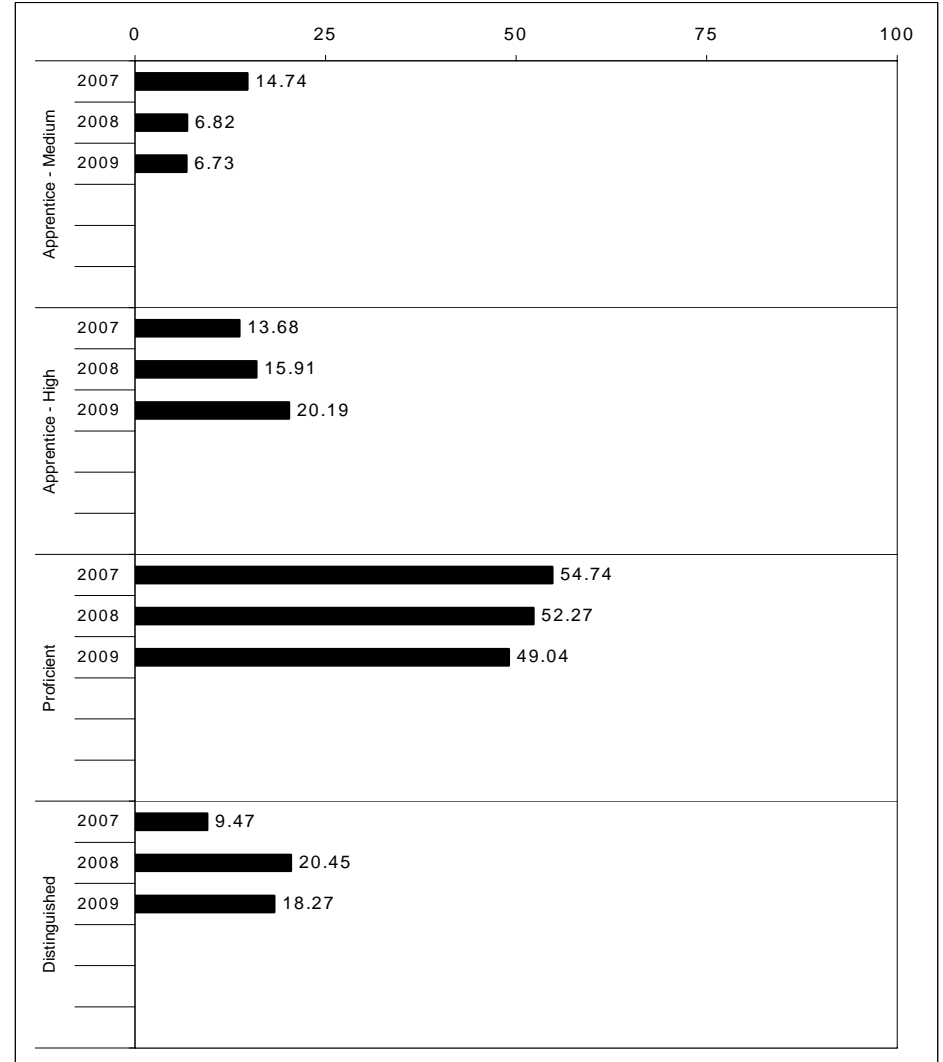
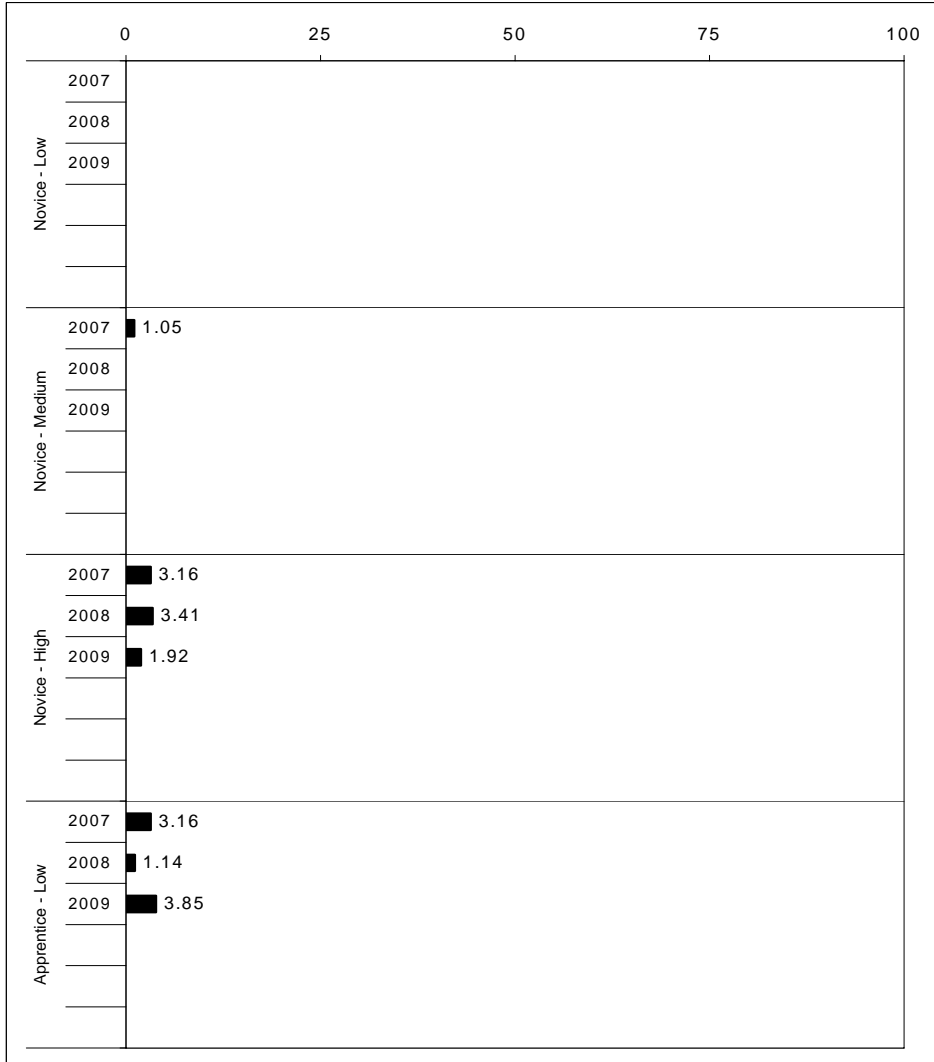
2008-2009
INTERIM PERFORMANCE REPORT
WRITING ON-DEMAND TREND DATA
Performance Level Percents

School: Julius Marks Elementary School

District: Fayette County

Code: 165620

Grade: 05

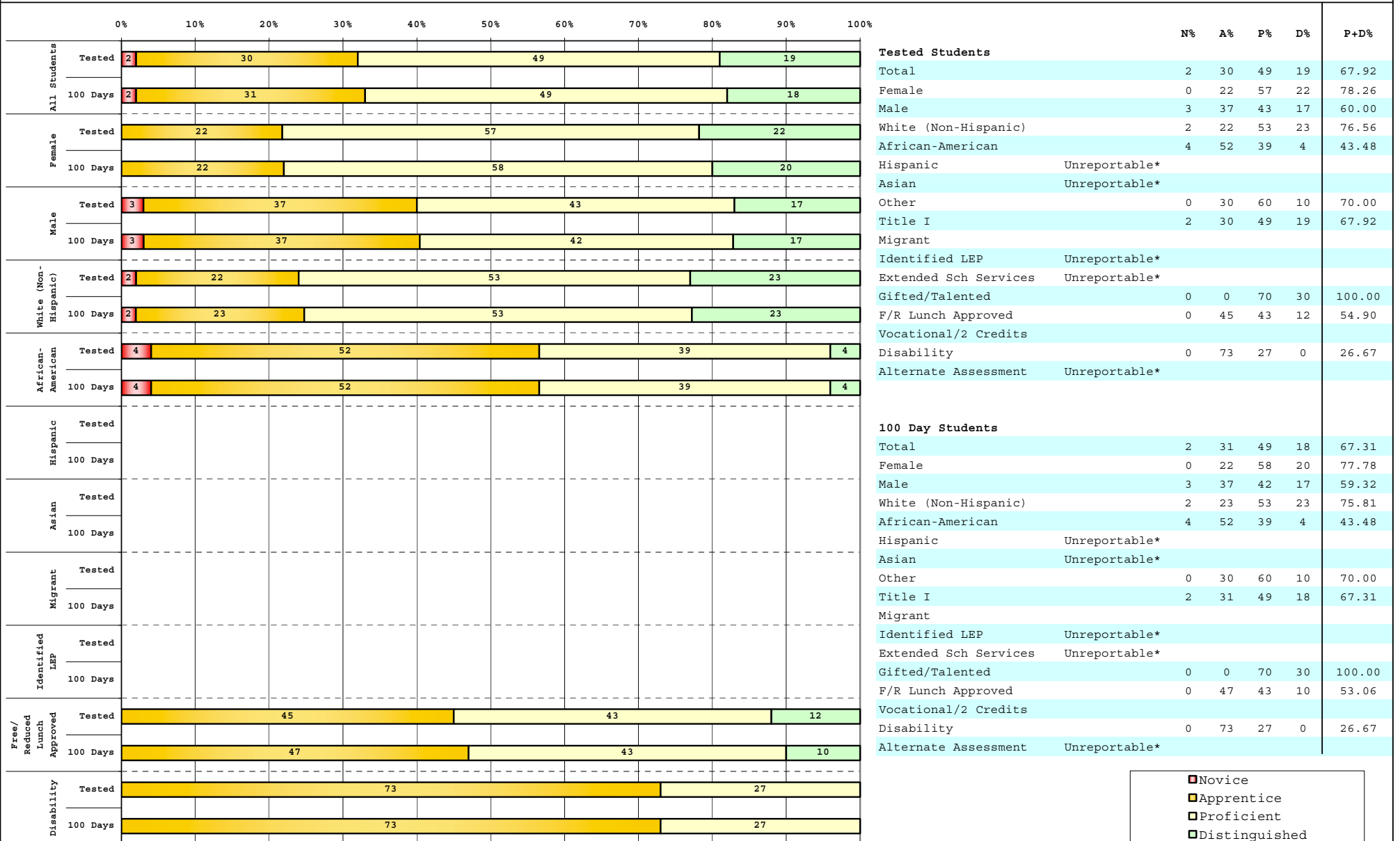


The horizontal bar represents the percent of students scoring at a performance level within a particular year. Percentages may not sum to 100% due to rounding.



2008-2009
INTERIM PERFORMANCE REPORT
WRITING ON-DEMAND DISAGGREGATION
Performance Level Percents

School: Julius Marks Elementary School
 District: Fayette County
 Code: 165620
 Grade: 05



Percentage may not sum to 100% due to rounding. 'Unreportable*' indicates subpopulations with fewer than 10 students or subpopulations where all students score at the same performance level.



2008-2009
INTERIM PERFORMANCE REPORT
WRITING ON-DEMAND CORE CONTENT

School: Julius Marks Elementary School
 District: Fayette County
 Code: 165620
 Grade: 05

WRITING PROMPT	SCHOOL												STATE												School
	No. Observations	Percents											Mean	Percents											Mean
	B	0	1	2	3	4	5	6	7	8		B	0	1	2	3	4	5	6	7	8				
Inform																									
1.X.X - Content	35	0	0	0	3	3	34	20	26	9	6	5.11	0	1	1	9	9	34	18	21	4	2	4.43	0.68	
2.X.X - Structure	35	0	0	0	3	3	37	23	20	9	6	5.03	0	1	2	9	10	35	19	19	3	1	4.33	0.70	
3.X.X - Convention	35	0	0	0	3	6	34	26	17	9	6	4.97	0	0	0	12	11	34	19	19	3	1	4.38	0.59	
Narrate for a purpose																									
1.X.X - Content	32	0	0	0	6	9	38	16	25	0	6	4.69	0	1	1	10	9	36	18	21	3	1	4.35	0.34	
2.X.X - Structure	32	0	0	0	6	6	44	19	22	0	3	4.56	0	1	2	10	10	37	17	19	3	1	4.27	0.29	
3.X.X - Convention	32	0	0	0	6	9	44	19	19	0	3	4.47	0	0	0	12	10	36	18	19	3	1	4.33	0.14	
Persuade																									
1.X.X - Content	36	0	0	0	3	6	28	17	33	11	3	5.17	0	1	1	8	8	33	19	21	5	3	4.50	0.67	
2.X.X - Structure	36	0	0	0	3	11	33	17	25	11	0	4.83	0	2	2	9	10	33	19	20	5	2	4.42	0.41	
3.X.X - Convention	36	0	0	0	3	14	28	19	22	11	3	4.89	0	0	0	11	10	32	19	20	5	2	4.50	0.39	

MULTIPLE CHOICE	No. Items	SCHOOL						STATE						School
		No. Observations	Percents			Mean	Std. Err.	No. Observations	Percents			Mean	-State Mean	
			Correct	Incorrect	Omit/Mult			Correct	Incorrect	Omit/Mult				
4.x.x - Writing Process	52	1,236	78	22	0	0.78	0.01	585,936	73	27	0	0.73	0.05	
4.10.x - Revising	16	276	73	27	0	0.73	0.03	130,317	66	34	0	0.66	0.07	
4.11.x - Editing	36	960	80	20	0	0.80	0.01	455,619	75	24	0	0.75	0.05	