



Interim Performance Report

In March 2009, the Kentucky General Assembly passed Senate Bill 1 (SB1) that was subsequently signed into law by the Governor. SB1 calls for a significant overhaul of the state's assessment and accountability system. The new assessment system begins in the spring of 2012. The school years of 2008-2009, 2009-2010 and 2010-2011 are described in SB1 as an interim period. This three-year period allows Kentucky to develop the new assessment system and to carry on state and federal testing requirements.

The Interim Performance Report includes the Kentucky Core Content Test (KCCT) in Reading (grades 3-8 and 10), Mathematics (grades 3-8 and 11), Science (grades 4, 7 and 11), Social Studies (grades 5, 8 and 11) and Writing On-Demand (grades 5, 8 and 12). The KCCT is based on the Kentucky Core Content for Assessment (Version 4.1) and contains multiple choice and open response questions. The Writing On-Demand test uses writing prompts that require students to craft a piece of writing in a 60 minute period.

The KCCT is developed under the direction of content advisory committees of Kentucky educators who draft, review and select test questions. All test items are reviewed by a bias review committee to enhance the fairness of items for all Kentucky students.

The KCCT continues to fulfill the requirements of the federal statute known as the No Child Left Behind Act of 2001. A separate accountability report for No Child Left Behind (NCLB) is published by the Kentucky Department of Education.

The Interim Performance Report focuses entirely on the five state-required content areas and provides data for schools or districts. The data in this report is not used directly for state accountability; although, these results can fulfill the requirements of Senate Bill 168 from 2002 and may be used by schools or districts for their own local accountability needs.

Performance standards are based on descriptions of Novice, Apprentice, Proficient and Distinguished (NAPD) student performance levels specific to the content area and grade being assessed. The performance standards, in conjunction with Kentucky's Core Content for Assessment, should allow instruction to better focus on the content area to be taught and on how well students must demonstrate achievement in each content area.

Reporting Changes for 2009

Based on SB1, Kentucky will not be reporting state accountability and academic indices as in the past. The report does have several familiar pages with performance level (NAPD) trend, core content and disaggregation data per content area. Districts and schools will still see distributions of how students scored in the Novice (with sublevels), Apprentice (with sublevels), Proficient and Distinguished performance levels.

Confidentiality Changes

Due to federal regulations around the Family Education Rights and Privacy Act (FERPA), the numbers of students have been removed. Though there is a need to report as much data as possible, there is also a paramount need to maintain the confidential aspects of individual scores. When scores are reported in what is commonly called "small cells" where very few students may be categorized, there is the possibility of revealing individual scores when numbers are reported. Numbers are reported to each district in a confidential report that accompanies the public Interim Performance Report.

2008-2009

INTERIM PERFORMANCE REPORT

School: Glendover Elementary School

District: Fayette County

Code: 165150

Grade: PRIMARY-05

CONTENTS OF THIS REPORT

Introduction	1
Academic Trend Data	
Reading Results	2-8
Mathematics Results	9-15
Science Results	16-18
Social Studies Results	19-21
Writing Results	22-24

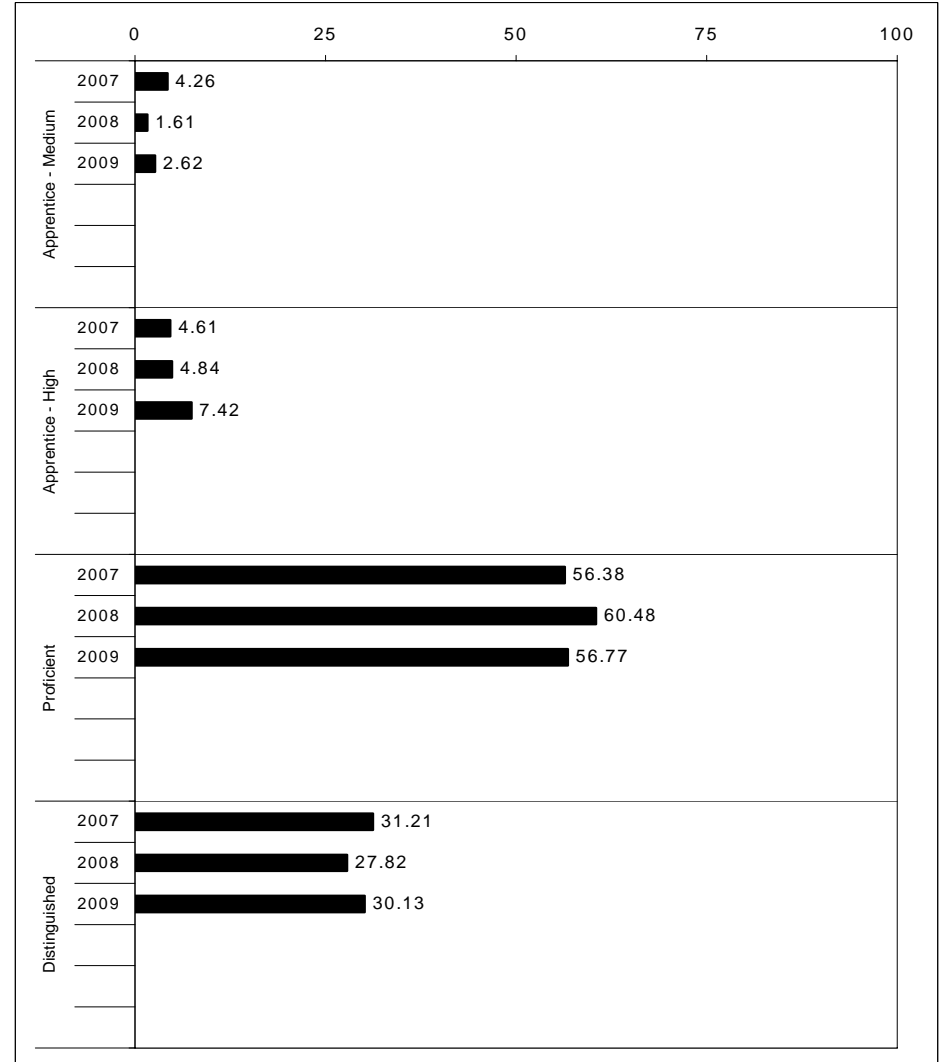
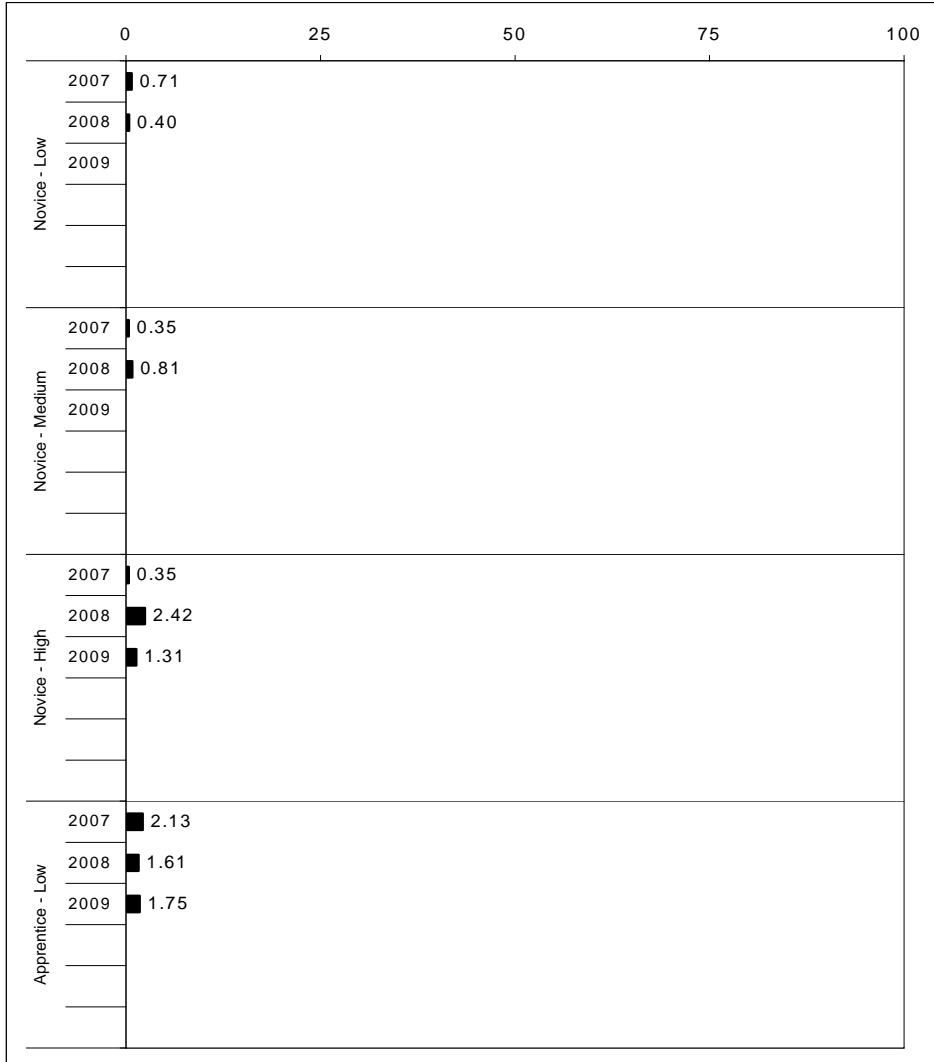
For more information, refer to the 2009 Interim Assessment Interpretative Guide on the Kentucky Department of Education Web site (www.education.ky.gov).





2008-2009
INTERIM PERFORMANCE REPORT
READING TREND DATA
Performance Level Percents

School: Glendover Elementary School
 District: Fayette County
 Code: 165150
 Grade: ELEMENTARY



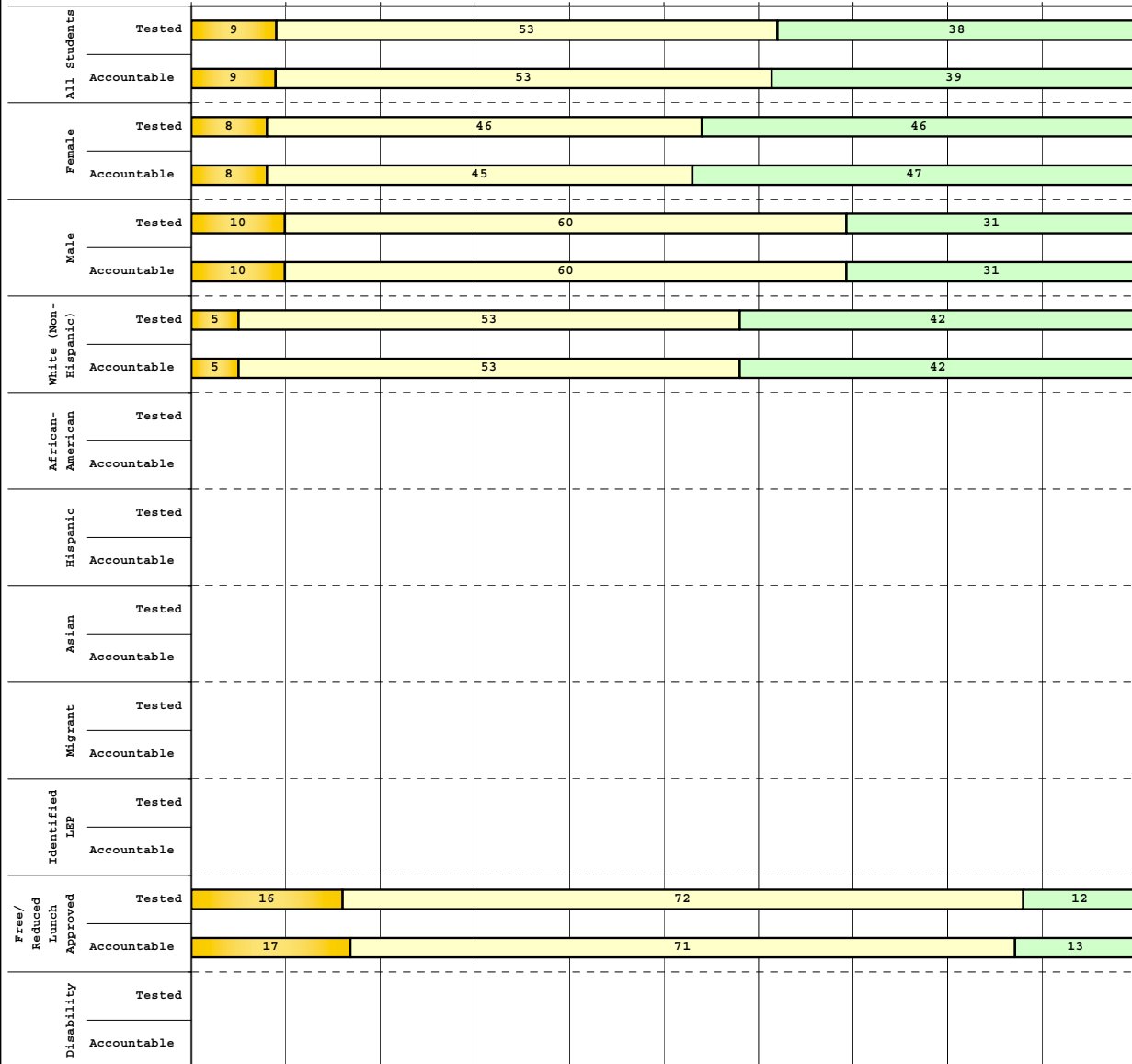
The horizontal bar represents the percent of students scoring at a performance level within a particular year. Percentages may not sum to 100% due to rounding.



**2008-2009
INTERIM PERFORMANCE REPORT
READING DISAGGREGATION
Performance Level Percents**

School: Glendover Elementary School
District: Fayette County
Code: 165150
Grade: 03

0% 10% 20% 30% 40% 50% 60% 70% 80% 90% 100%



Tested Students

	N%	A%	P%	D%	P+D%
Total	0	9	53	38	91.36
Female	0	8	46	46	92.31
Male	0	10	60	31	90.48
White (Non-Hispanic)	0	5	53	42	95.00
African-American	Unreportable*				
Hispanic	Unreportable*				
Asian	Unreportable*				
Other	Unreportable*				
Title I					
Migrant					
Identified LEP	Unreportable*				
Extended Sch Services	0	20	70	10	80.00
Gifted/Talented	0	0	37	63	100.00
F/R Lunch Approved	0	16	72	12	84.00
Vocational/2 Credits					
Disability	Unreportable*				
Alternate Assessment					

NCLB Accountable Students

	N%	A%	P%	D%	P+D%
Total	0	9	53	39	91.25
Female	0	8	45	47	92.11
Male	0	10	60	31	90.48
White (Non-Hispanic)	0	5	53	42	94.92
African-American	Unreportable*				
Hispanic	Unreportable*				
Asian	Unreportable*				
Other	Unreportable*				
Title I					
Migrant					
Identified LEP	Unreportable*				
Extended Sch Services	0	20	70	10	80.00
Gifted/Talented	0	0	37	63	100.00
F/R Lunch Approved	0	17	71	13	83.33
Vocational/2 Credits					
Disability	Unreportable*				
Alternate Assessment					

 Novice
 Apprentice
 Proficient
 Distinguished

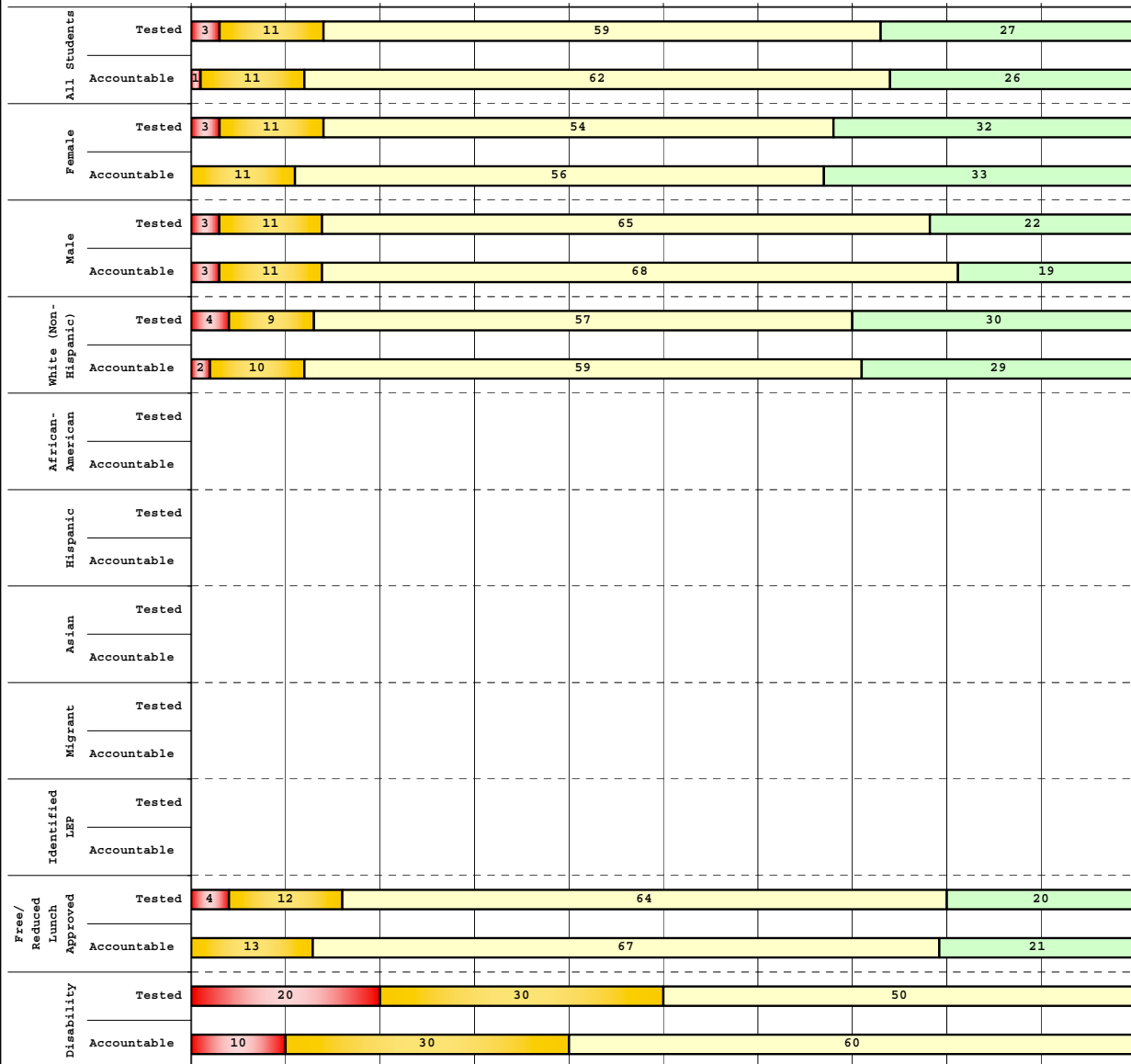
Percentage may not sum to 100% due to rounding. 'Unreportable*' indicates subpopulations with fewer than 10 students or subpopulations where all students score at the same performance level.



**2008-2009
INTERIM PERFORMANCE REPORT
READING DISAGGREGATION
Performance Level Percents**

School: Glendover Elementary School
 District: Fayette County
 Code: 165150
 Grade: 04

0% 10% 20% 30% 40% 50% 60% 70% 80% 90% 100%



Tested Students

	N%	A%	P%	D%	P+D%
Total	3	11	59	27	86.49
Female	3	11	54	32	86.49
Male	3	11	65	22	86.49
White (Non-Hispanic)	4	9	57	30	86.79
African-American	Unreportable*				
Hispanic	Unreportable*				
Asian	Unreportable*				
Other	Unreportable*				
Title I					
Migrant					
Identified LEP	Unreportable*				
Extended Sch Services	0	28	67	6	72.22
Gifted/Talented	0	0	45	55	100.00
F/R Lunch Approved	4	12	64	20	84.00
Vocational/2 Credits					
Disability	20	30	50	0	50.00
Alternate Assessment	Unreportable*				

NCLB Accountable Students

	N%	A%	P%	D%	P+D%
Total	1	11	62	26	87.67
Female	0	11	56	33	88.89
Male	3	11	68	19	86.49
White (Non-Hispanic)	2	10	59	29	88.24
African-American	Unreportable*				
Hispanic	Unreportable*				
Asian	Unreportable*				
Other	Unreportable*				
Title I					
Migrant					
Identified LEP	Unreportable*				
Extended Sch Services	0	28	67	6	72.22
Gifted/Talented	0	0	45	55	100.00
F/R Lunch Approved	0	13	67	21	87.50
Vocational/2 Credits					
Disability	10	30	60	0	60.00
Alternate Assessment	Unreportable*				

■ Novice
■ Apprentice
■ Proficient
■ Distinguished

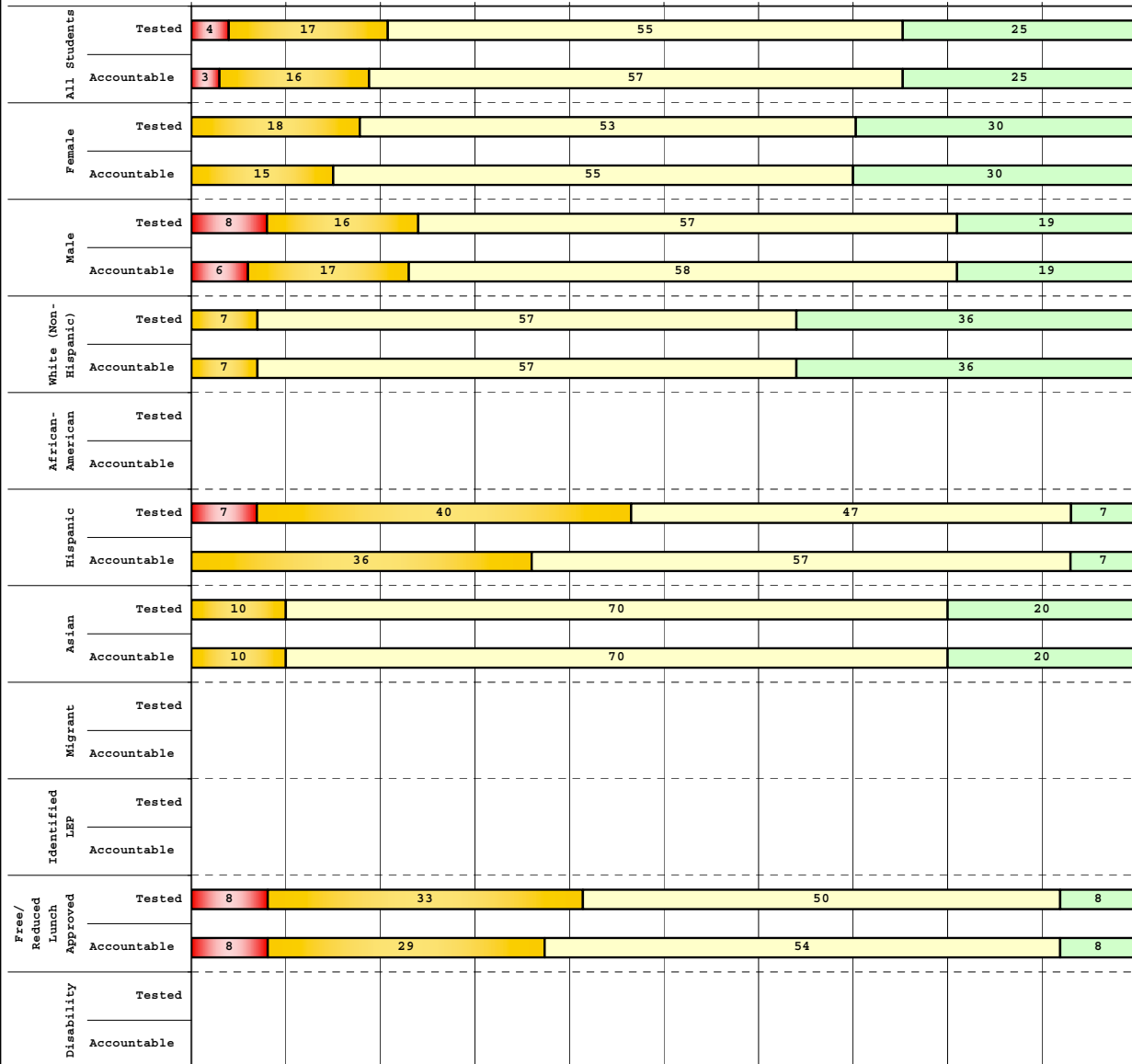
Percentage may not sum to 100% due to rounding. 'Unreportable*' indicates subpopulations with fewer than 10 students or subpopulations where all students score at the same performance level.



**2008-2009
INTERIM PERFORMANCE REPORT
READING DISAGGREGATION
Performance Level Percents**

School: Glendover Elementary School
District: Fayette County
Code: 165150
Grade: 05

0% 10% 20% 30% 40% 50% 60% 70% 80% 90% 100%



	N%	A%	P%	D%	P+D%
Tested Students					
Total	4	17	55	25	79.22
Female	0	18	53	30	82.50
Male	8	16	57	19	75.68
White (Non-Hispanic)	0	7	57	36	93.18
African-American	Unreportable*				
Hispanic	7	40	47	7	53.33
Asian	0	10	70	20	90.00
Other					
Title I					
Migrant					
Identified LEP	Unreportable*				
Extended Sch Services	0	33	60	7	66.67
Gifted/Talented	0	0	57	43	100.00
F/R Lunch Approved	8	33	50	8	58.33
Vocational/2 Credits					
Disability	Unreportable*				
Alternate Assessment	Unreportable*				
NCLB Accountable Students					
Total	3	16	57	25	81.58
Female	0	15	55	30	85.00
Male	6	17	58	19	77.78
White (Non-Hispanic)	0	7	57	36	93.18
African-American	Unreportable*				
Hispanic	0	36	57	7	64.29
Asian	0	10	70	20	90.00
Other					
Title I					
Migrant	Unreportable*				
Identified LEP	Unreportable*				
Extended Sch Services	0	33	60	7	66.67
Gifted/Talented	0	0	57	43	100.00
F/R Lunch Approved	8	29	54	8	62.50
Vocational/2 Credits					
Disability	Unreportable*				
Alternate Assessment	Unreportable*				

■ Novice
■ Apprentice
■ Proficient
■ Distinguished

Percentage may not sum to 100% due to rounding. 'Unreportable*' indicates subpopulations with fewer than 10 students or subpopulations where all students score at the same performance level.



2008-2009
INTERIM PERFORMANCE REPORT
READING CORE CONTENT

School: Glendover Elementary School
 District: Fayette County
 Code: 165150
 Grade: 03

	No. Items	No. Observations	SCHOOL								STATE								School -State Mean
			Percents						Mean	Std. Err.	Percents						Mean		
			B	0	1	2	3	4					No. Observations	B	0	1		2	3
OPEN RESPONSE																			
2.0.x - Developing Understanding	2	160	0	3	22	51	21	4	2.0	0.1	100,212	0	10	30	44	14	2	1.7	0.3
3.0.x - Interpreting Text	2	160	0	3	22	51	21	4	2.0	0.1	100,212	0	10	30	44	14	2	1.7	0.3
MULTIPLE CHOICE																			
1.0.x - Forming a Foundation	32	621	93	6	1				0.93	0.02	392,589	83	17	0				0.83	0.10
2.0.x - Developing Understanding	89	1,586	89	10	1				0.89	0.01	993,477	80	20	0				0.80	0.09
3.0.x - Interpreting Text	31	747	87	14	0				0.86	0.02	468,115	77	23	0				0.77	0.09
5.0.x - Critical Stance	15	335	89	10	1				0.89	0.02	208,359	79	21	0				0.79	0.10



2008-2009
INTERIM PERFORMANCE REPORT
READING CORE CONTENT

School: Glendover Elementary School
 District: Fayette County
 Code: 165150
 Grade: 04

	No. Items	No. Observations	SCHOOL							Mean	Std. Err.	No. Observations	STATE							Mean	School -State Mean
			B	0	1	2	3	4	Percents				B	0	1	2	3	4	Percents		
OPEN RESPONSE																					
2.0.x - Developing Understanding	5	118	0	0	14	53	28	5	2.2	0.1	81,849	0	3	24	52	18	3	1.9	0.3		
3.0.x - Interpreting Text	6	187	0	3	13	48	29	6	2.2	0.1	131,199	0	4	22	45	23	5	2.0	0.2		
MULTIPLE CHOICE																					
1.0.x - Forming a Foundation	34	580	80	20	0				0.80	0.02	401,452	72	28	0				0.71	0.09		
2.0.x - Developing Understanding	76	1,254	80	20	0				0.80	0.01	868,422	73	27	0				0.73	0.07		
3.0.x - Interpreting Text	29	407	89	11	0				0.89	0.02	278,648	79	21	0				0.79	0.10		
5.0.x - Critical Stance	9	224	77	23	0				0.77	0.03	155,704	74	26	0				0.74	0.03		



2008-2009
INTERIM PERFORMANCE REPORT
READING CORE CONTENT

School: Glendover Elementary School
 District: Fayette County
 Code: 165150
 Grade: 05

	No. Items	No. Observations	SCHOOL							Mean	Std. Err.	No. Observations	STATE							Mean	School -State Mean
			B	0	1	2	3	4	Percents				B	0	1	2	3	4	Percents		
OPEN RESPONSE																					
2.0.x - Developing Understanding	6	135	0	1	18	50	27	5	2.2	0.1	89,507	0	5	23	48	20	5	2.0	0.2		
3.0.x - Interpreting Text	6	203	0	2	17	53	22	6	2.1	0.1	130,403	0	5	21	50	19	4	2.0	0.1		
MULTIPLE CHOICE																					
1.0.x - Forming a Foundation	28	423	85	15	0				0.85	0.02	268,187	74	26	0				0.74	0.11		
2.0.x - Developing Understanding	71	1,266	87	13	0				0.87	0.01	823,068	80	20	0				0.80	0.07		
3.0.x - Interpreting Text	27	522	89	11	0				0.89	0.02	341,653	81	19	0				0.81	0.08		
5.0.x - Critical Stance	17	454	85	15	0				0.85	0.02	300,671	75	25	0				0.75	0.10		



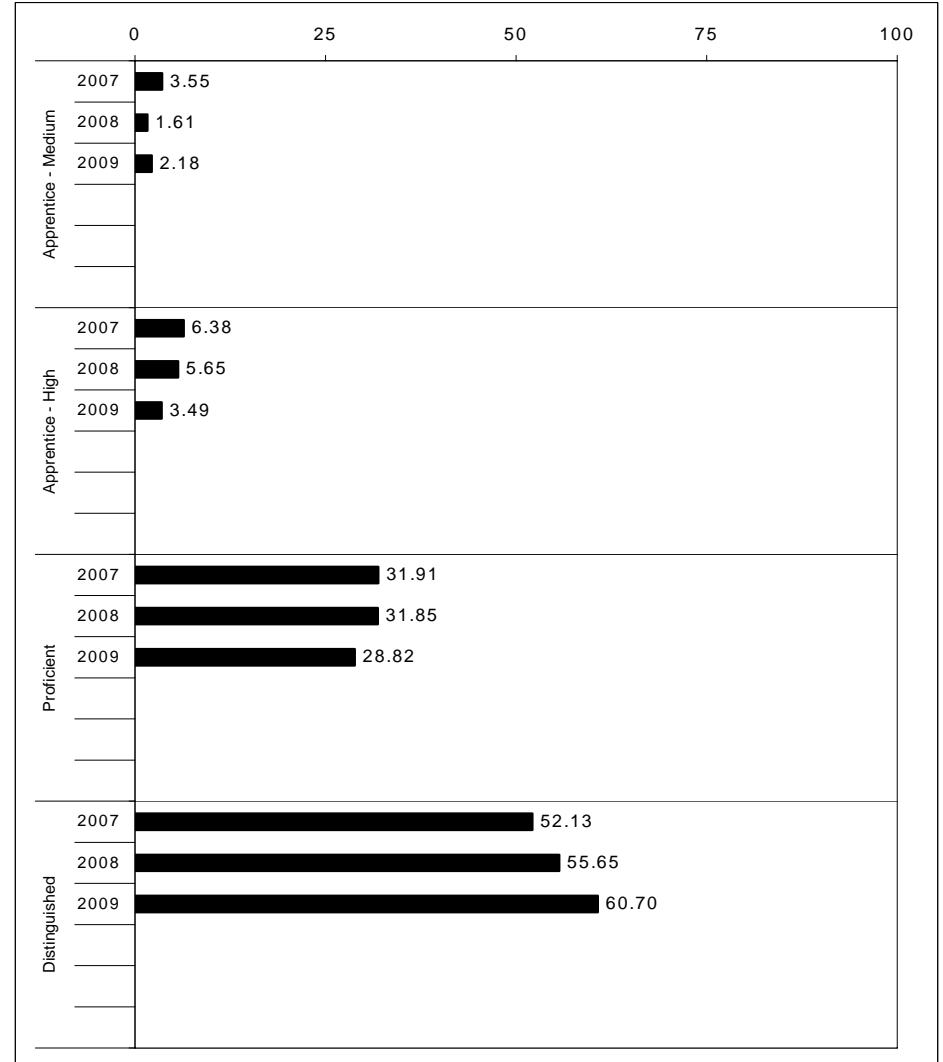
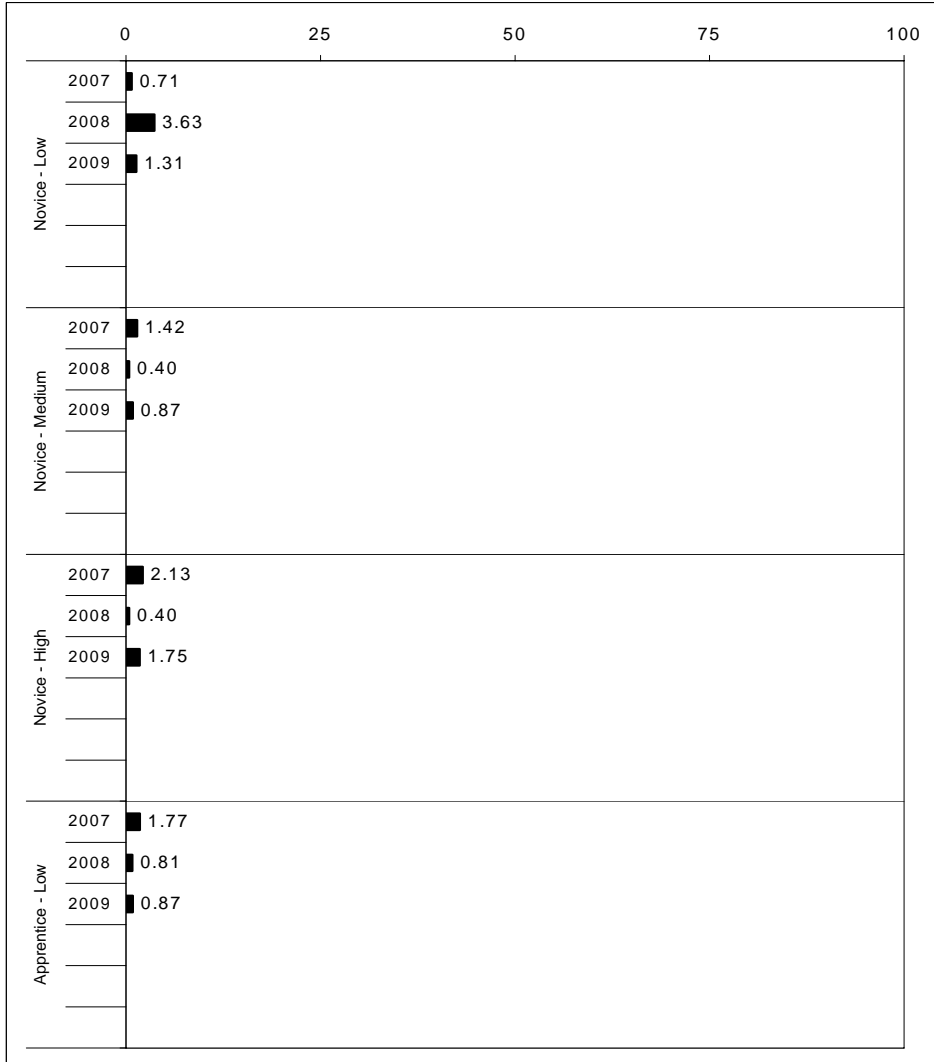
2008-2009
INTERIM PERFORMANCE REPORT
MATHEMATICS TREND DATA
Performance Level Percents

School: Glendover Elementary School

District: Fayette County

Code: 165150

Grade: ELEMENTARY



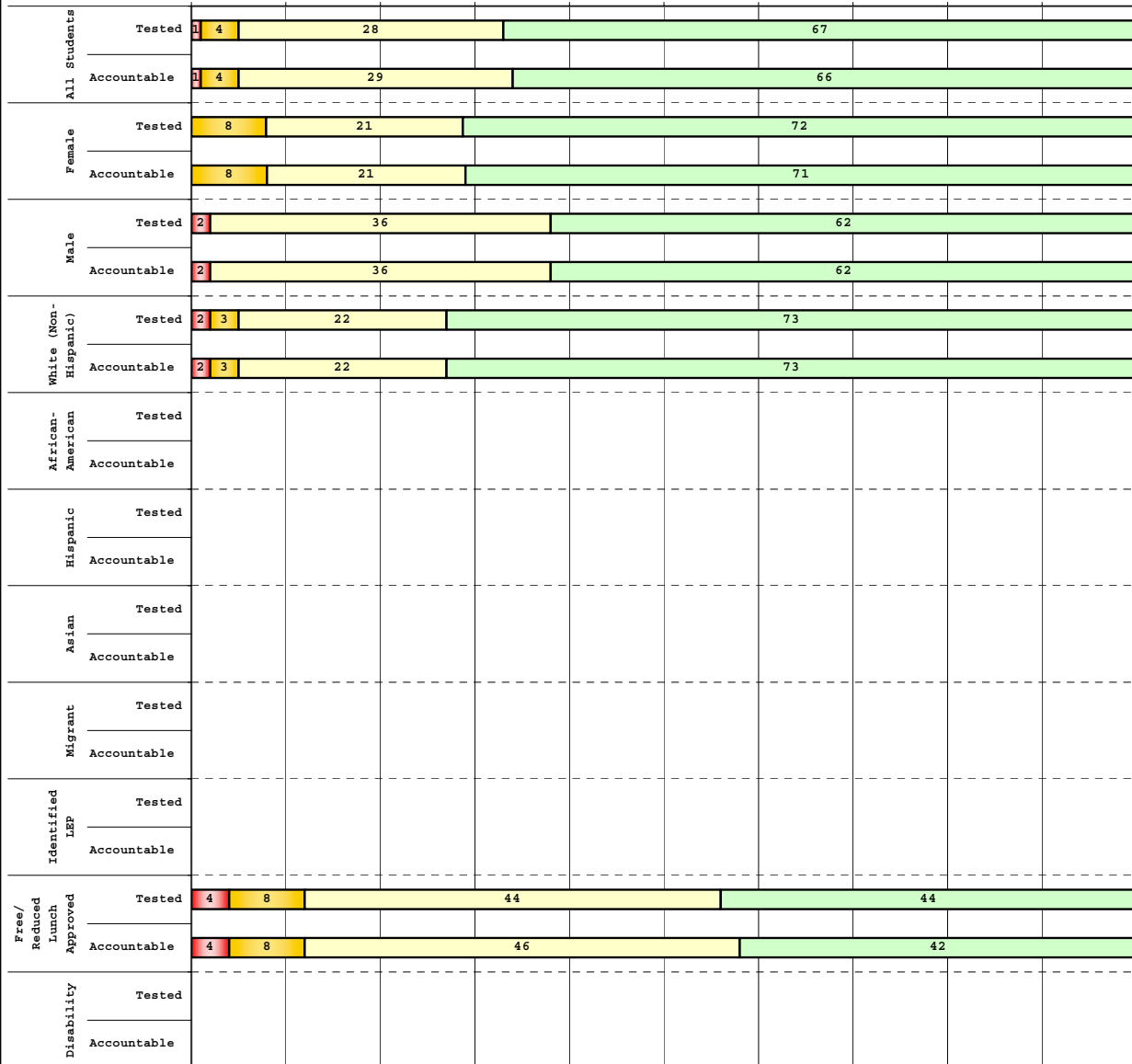
The horizontal bar represents the percent of students scoring at a performance level within a particular year. Percentages may not sum to 100% due to rounding.



2008-2009
INTERIM PERFORMANCE REPORT
MATHEMATICS DISAGGREGATION
Performance Level Percents

School: Glendover Elementary School
 District: Fayette County
 Code: 165150
 Grade: 03

0% 10% 20% 30% 40% 50% 60% 70% 80% 90% 100%



Tested Students

	N%	A%	P%	D%	P+D%
Total	1	4	28	67	95.06
Female	0	8	21	72	92.31
Male	2	0	36	62	97.62
White (Non-Hispanic)	2	3	22	73	95.00
African-American	Unreportable*				
Hispanic	Unreportable*				
Asian	Unreportable*				
Other	Unreportable*				
Title I					
Migrant					
Identified LEP	Unreportable*				
Extended Sch Services	5	15	75	5	80.00
Gifted/Talented	0	0	3	97	100.00
F/R Lunch Approved	4	8	44	44	88.00
Vocational/2 Credits					
Disability	Unreportable*				
Alternate Assessment					

NCLB Accountable Students

	N%	A%	P%	D%	P+D%
Total	1	4	29	66	95.00
Female	0	8	21	71	92.11
Male	2	0	36	62	97.62
White (Non-Hispanic)	2	3	22	73	94.92
African-American	Unreportable*				
Hispanic	Unreportable*				
Asian	Unreportable*				
Other	Unreportable*				
Title I					
Migrant					
Identified LEP	Unreportable*				
Extended Sch Services	5	15	75	5	80.00
Gifted/Talented	0	0	3	97	100.00
F/R Lunch Approved	4	8	46	42	87.50
Vocational/2 Credits					
Disability	Unreportable*				
Alternate Assessment					

Novice
 Apprentice
 Proficient
 Distinguished

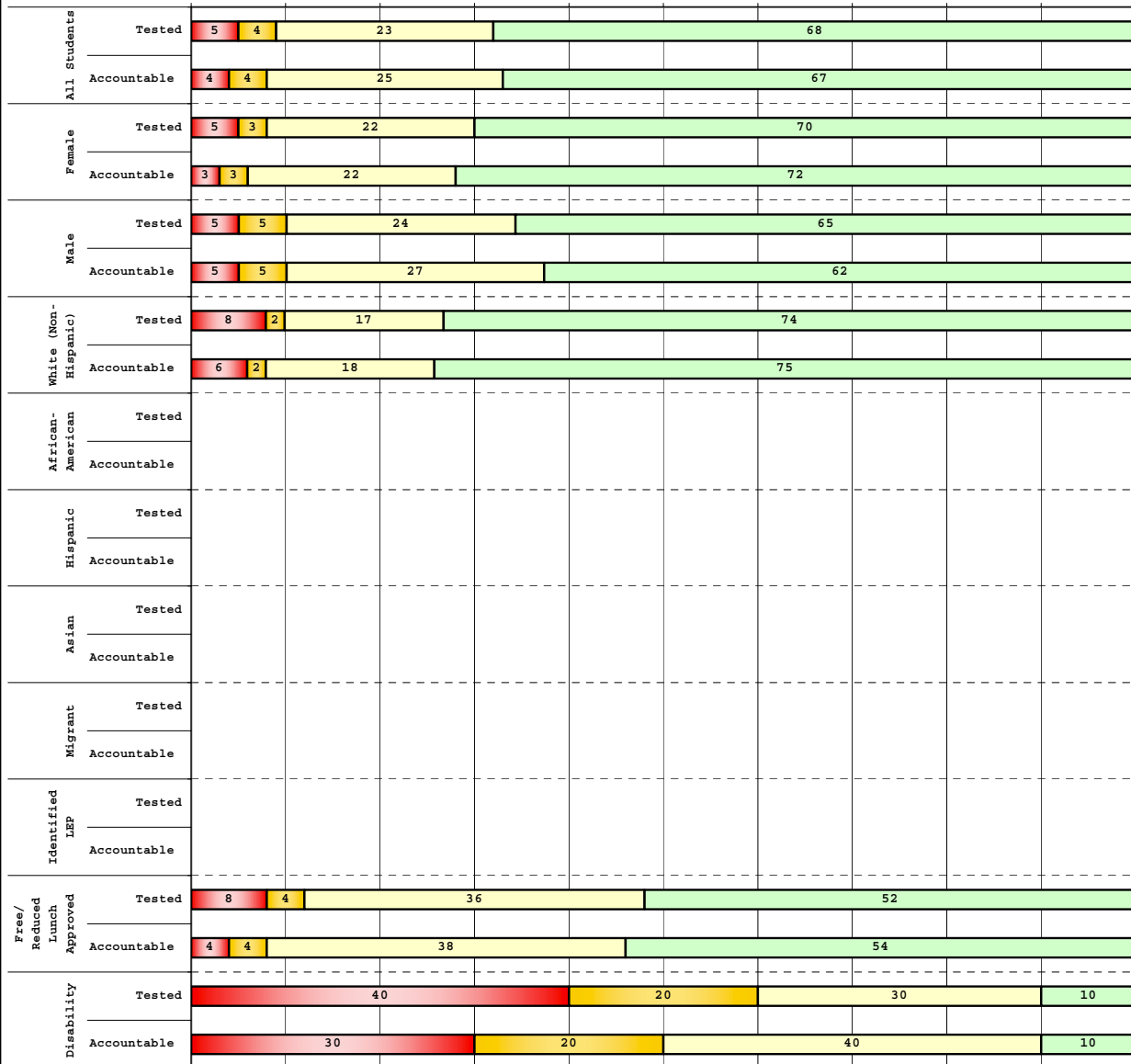
Percentage may not sum to 100% due to rounding. 'Unreportable*' indicates subpopulations with fewer than 10 students or subpopulations where all students score at the same performance level.



2008-2009
INTERIM PERFORMANCE REPORT
MATHEMATICS DISAGGREGATION
Performance Level Percents

School: Glendover Elementary School
 District: Fayette County
 Code: 165150
 Grade: 04

0% 10% 20% 30% 40% 50% 60% 70% 80% 90% 100%



Tested Students

	N%	A%	P%	D%	P+D%
Total	5	4	23	68	90.54
Female	5	3	22	70	91.89
Male	5	5	24	65	89.19
White (Non-Hispanic)	8	2	17	74	90.57
African-American	Unreportable*				
Hispanic	Unreportable*				
Asian	Unreportable*				
Other	Unreportable*				
Title I					
Migrant					
Identified LEP	Unreportable*				
Extended Sch Services	6	6	61	28	88.89
Gifted/Talented	Unreportable*				
F/R Lunch Approved	8	4	36	52	88.00
Vocational/2 Credits					
Disability	40	20	30	10	40.00
Alternate Assessment	Unreportable*				

NCLB Accountable Students

	N%	A%	P%	D%	P+D%
Total	4	4	25	67	91.78
Female	3	3	22	72	94.44
Male	5	5	27	62	89.19
White (Non-Hispanic)	6	2	18	75	92.16
African-American	Unreportable*				
Hispanic	Unreportable*				
Asian	Unreportable*				
Other	Unreportable*				
Title I					
Migrant					
Identified LEP	Unreportable*				
Extended Sch Services	6	6	61	28	88.89
Gifted/Talented	Unreportable*				
F/R Lunch Approved	4	4	38	54	91.67
Vocational/2 Credits					
Disability	30	20	40	10	50.00
Alternate Assessment	Unreportable*				

■ Novice
■ Apprentice
■ Proficient
■ Distinguished

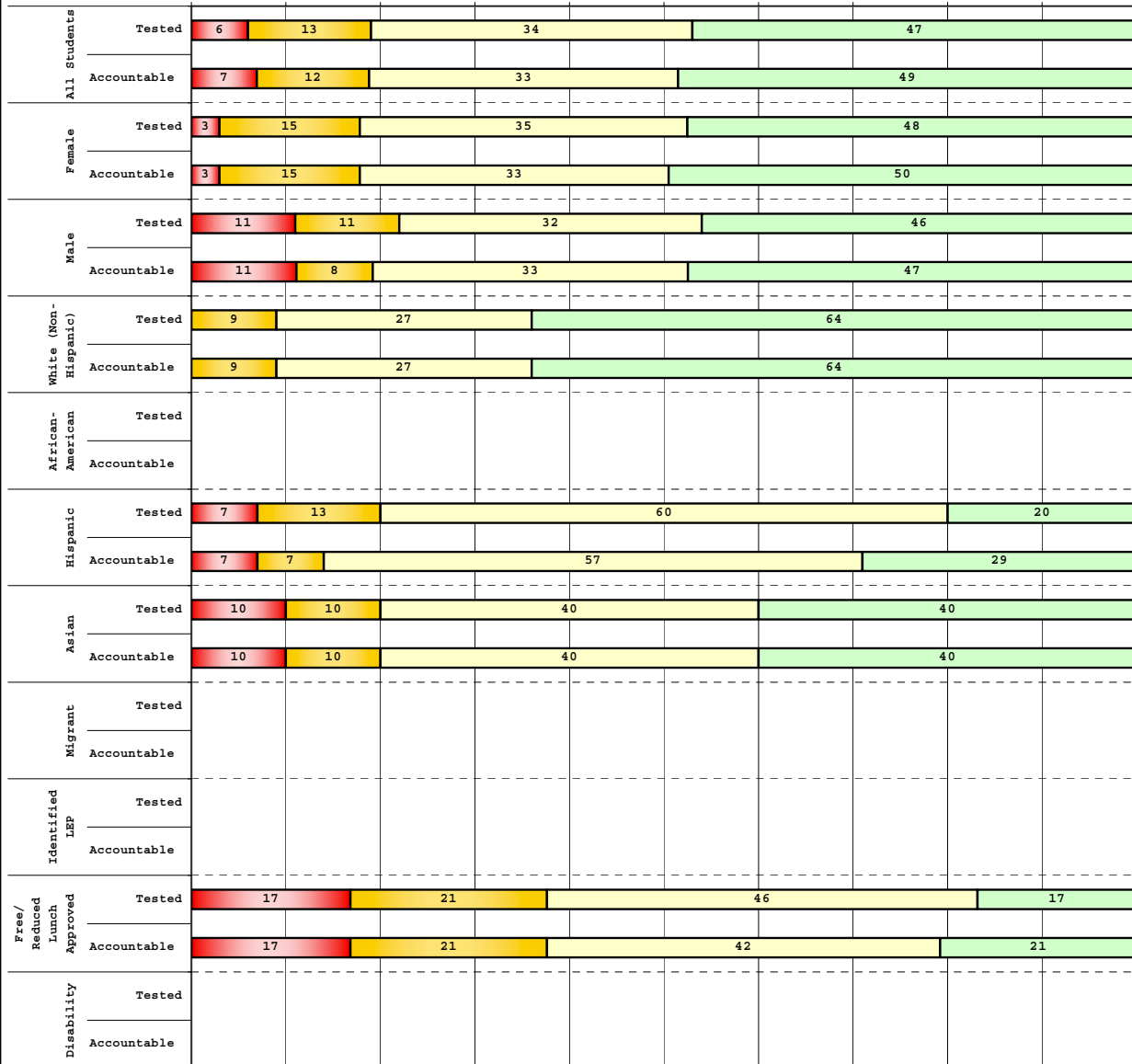
Percentage may not sum to 100% due to rounding. 'Unreportable*' indicates subpopulations with fewer than 10 students or subpopulations where all students score at the same performance level.



**2008-2009
INTERIM PERFORMANCE REPORT
MATHEMATICS DISAGGREGATION
Performance Level Percents**

School: Glendover Elementary School
District: Fayette County
Code: 165150
Grade: 05

0% 10% 20% 30% 40% 50% 60% 70% 80% 90% 100%



Category	N%	A%	P%	D%	P+D%
Tested Students					
Total	6	13	34	47	80.52
Female	3	15	35	48	82.50
Male	11	11	32	46	78.38
White (Non-Hispanic)	0	9	27	64	90.91
African-American	Unreportable*				
Hispanic	7	13	60	20	80.00
Asian	10	10	40	40	80.00
Other					
Title I					
Migrant					
Identified LEP	Unreportable*				
Extended Sch Services	7	40	40	13	53.33
Gifted/Talented	0	0	4	96	100.00
F/R Lunch Approved	17	21	46	17	62.50
Vocational/2 Credits					
Disability	Unreportable*				
Alternate Assessment	Unreportable*				
NCLB Accountable Students					
Total	7	12	33	49	81.58
Female	3	15	33	50	82.50
Male	11	8	33	47	80.56
White (Non-Hispanic)	0	9	27	64	90.91
African-American	Unreportable*				
Hispanic	7	7	57	29	85.71
Asian	10	10	40	40	80.00
Other					
Title I					
Migrant	Unreportable*				
Identified LEP	Unreportable*				
Extended Sch Services	7	40	40	13	53.33
Gifted/Talented	0	0	4	96	100.00
F/R Lunch Approved	17	21	42	21	62.50
Vocational/2 Credits					
Disability	Unreportable*				
Alternate Assessment	Unreportable*				

■ Novice
■ Apprentice
■ Proficient
■ Distinguished

Percentage may not sum to 100% due to rounding. 'Unreportable*' indicates subpopulations with fewer than 10 students or subpopulations where all students score at the same performance level.



2008-2009
INTERIM PERFORMANCE REPORT
MATHEMATICS CORE CONTENT

School: Glendover Elementary School
 District: Fayette County
 Code: 165150
 Grade: 03

	No. Items	No. Observations	SCHOOL								STATE								School -State Mean
			Percents						Mean	Std. Err.	Percents						Mean		
			B	0	1	2	3	4					No. Observations	B	0	1		2	3
OPEN RESPONSE																			
1.x.x - Number Prop Oper	5	199	1	10	22	29	21	18	2.1	0.1	125,243	0	21	35	26	10	8	1.5	0.6
2.x.x - Measurement	1	15	0	0	0	27	13	60	3.3	0.4	8,325	0	25	5	30	14	25	2.1	1.2
3.x.x - Geometry	2	25	0	8	8	40	20	24	2.4	0.2	16,777	0	8	24	35	13	20	2.1	0.3
4.x.x - Data Analysis & Probabilit	1	80	0	1	5	13	36	45	3.2	0.1	50,106	0	9	13	19	27	32	2.6	0.6
5.x.x - Algebraic Thinking	2	96	0	1	4	13	36	46	3.2	0.1	58,404	0	9	14	19	28	31	2.6	0.6
MULTIPLE CHOICE																			
1.x.x - Number Prop Oper	32	1,294	Correct	Incorrect	Omit/Mult				0.86	0.01	810,106	Correct	Incorrect	Omit/Mult				0.74	0.12
2.x.x - Measurement	7	295	86	13	1				0.92	0.02	183,647	74	26	0				0.81	0.11
3.x.x - Geometry	18	640	92	7	1				0.89	0.01	400,848	81	18	0				0.85	0.04
4.x.x - Data Analysis & Probabilit	8	304	89	10	1				0.82	0.03	192,126	85	15	0				0.69	0.13
5.x.x - Algebraic Thinking	11	347	82	17	1				0.86	0.02	217,089	69	31	0				0.78	0.08



2008-2009
INTERIM PERFORMANCE REPORT
MATHEMATICS CORE CONTENT

School: Glendover Elementary School
 District: Fayette County
 Code: 165150
 Grade: 04

	No. Items	No. Observations	SCHOOL								STATE								School -State Mean
			Percents						Mean	Std. Err.	Percents						Mean		
			B	0	1	2	3	4					No. Observations	B	0	1		2	3
OPEN RESPONSE																			
1.x.x - Number Prop Oper	4	108	0	6	19	25	17	33	2.5	0.1	73,656	0	17	24	29	19	12	1.9	0.6
2.x.x - Measurement	1	11	0	18	9	18	18	36	2.5	0.5	8,195	0	43	13	10	20	13	1.5	1.0
3.x.x - Geometry	2	81	0	4	6	5	20	65	3.4	0.2	57,352	0	11	20	17	19	33	2.4	1.0
4.x.x - Data Analysis & Probabilit	1	14	0	0	7	14	36	43	3.1	0.3	8,152	0	5	36	29	23	6	1.9	1.2
5.x.x - Algebraic Thinking	2	81	0	0	20	26	27	27	2.6	0.1	57,508	0	5	27	32	25	11	2.1	0.5
MULTIPLE CHOICE																			
			Correct	Incorrect	Omit/Mult							Correct	Incorrect	Omit/Mult					
1.x.x - Number Prop Oper	31	953	79	21	0	0.79	0.02	664,194			67	33	0	0.67	0.12				
2.x.x - Measurement	7	204	79	21	1	0.79	0.03	139,170			62	38	0	0.62	0.17				
3.x.x - Geometry	14	407	89	11	0	0.89	0.02	278,460			77	23	0	0.77	0.12				
4.x.x - Data Analysis & Probabilit	12	433	82	17	1	0.82	0.02	303,394			71	29	0	0.71	0.11				
5.x.x - Algebraic Thinking	11	367	78	22	0	0.78	0.02	253,829			69	31	0	0.69	0.09				



2008-2009
INTERIM PERFORMANCE REPORT
MATHEMATICS CORE CONTENT

School: Glendover Elementary School
 District: Fayette County
 Code: 165150
 Grade: 05

	No. Items	No. Observations	SCHOOL								STATE								School -State Mean
			Percents						Mean	Std. Err.	Percents						Mean		
			B	0	1	2	3	4					No. Observations	B	0	1		2	3
OPEN RESPONSE																			
1.x.x - Number Prop Oper	4	115	0	7	8	17	17	52	3.0	0.1	73,199	0	8	20	18	25	29	2.5	0.5
2.x.x - Measurement	1	13	0	15	31	15	15	23	2.0	0.4	8,380	0	37	30	13	10	11	1.3	0.7
3.x.x - Geometry	2	87	0	1	20	33	38	8	2.3	0.1	56,900	0	6	24	30	26	14	2.2	0.1
4.x.x - Data Analysis & Probabilit	1	75	0	9	16	13	8	53	2.8	0.2	48,828	0	15	18	15	17	35	2.4	0.4
5.x.x - Algebraic Thinking	1	10	0	10	0	10	0	80	3.4	0.4	8,005	0	13	15	20	17	35	2.5	0.9
MULTIPLE CHOICE																			
1.x.x - Number Prop Oper	29	988	Correct	Incorrect	Omit/Mult				0.76	0.02	643,144	Correct	Incorrect	Omit/Mult				0.63	0.13
2.x.x - Measurement	9	235	76	24	0				0.70	0.03	154,489	63	37	0				0.62	0.08
3.x.x - Geometry	14	425	70	30	0				0.86	0.02	276,516	62	38	0				0.78	0.08
4.x.x - Data Analysis & Probabilit	11	387	86	14	0				0.79	0.02	252,212	78	22	0				0.64	0.15
5.x.x - Algebraic Thinking	10	375	79	21	0				0.77	0.02	244,140	64	36	0				0.65	0.12



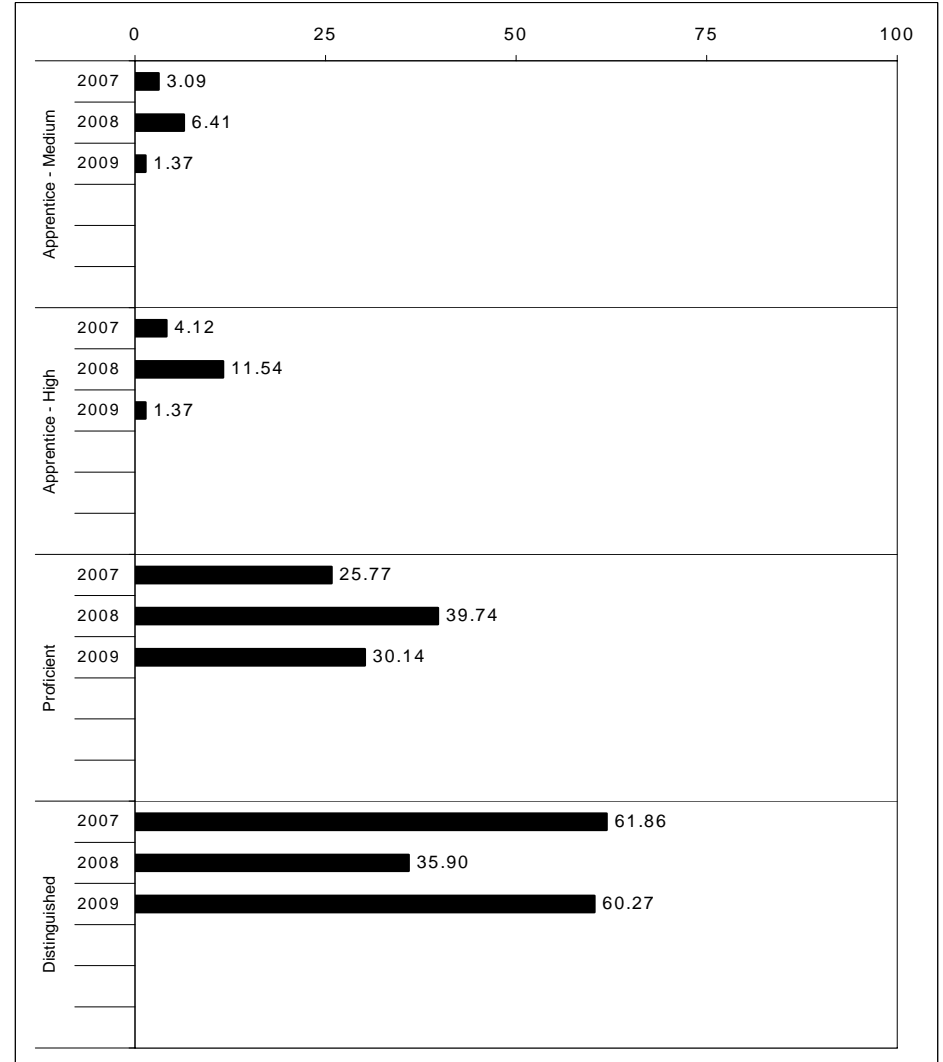
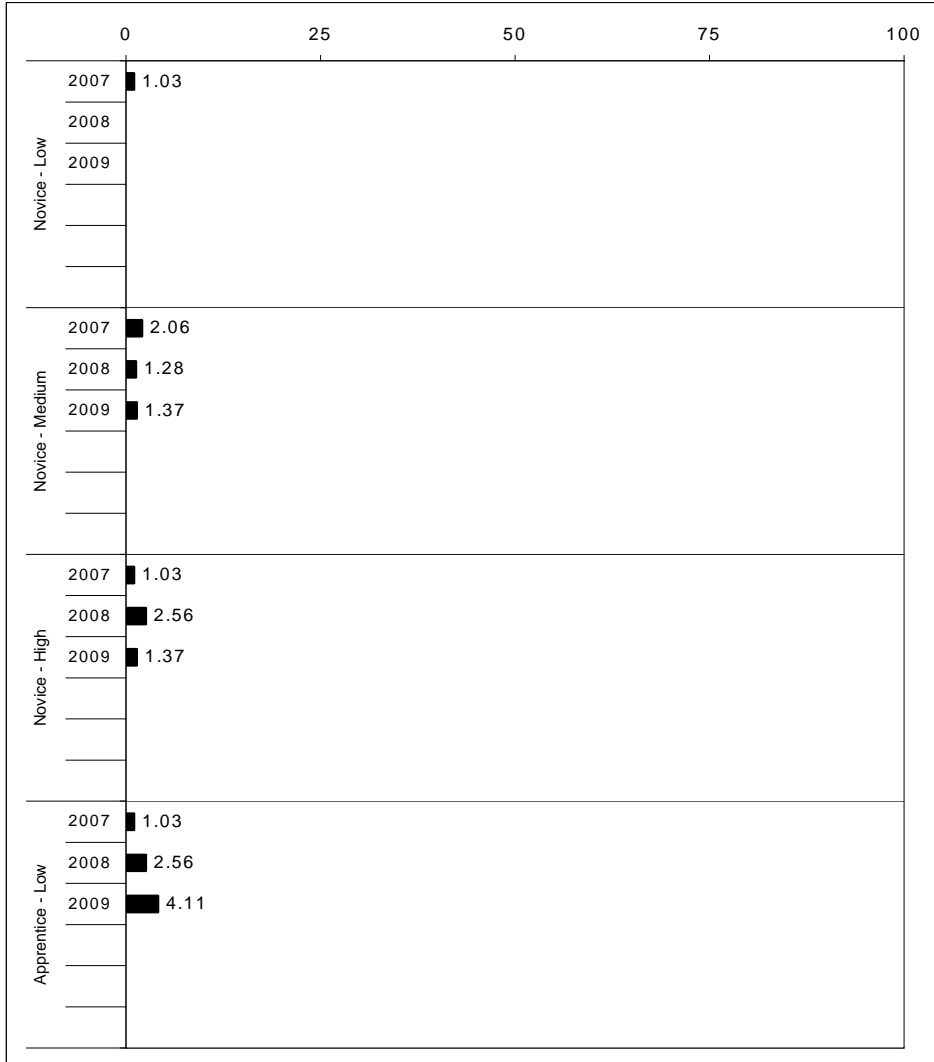
2008-2009
INTERIM PERFORMANCE REPORT
SCIENCE TREND DATA
Performance Level Percents

School: Glendover Elementary School

District: Fayette County

Code: 165150

Grade: 04

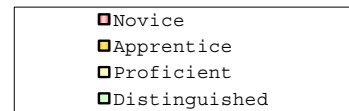
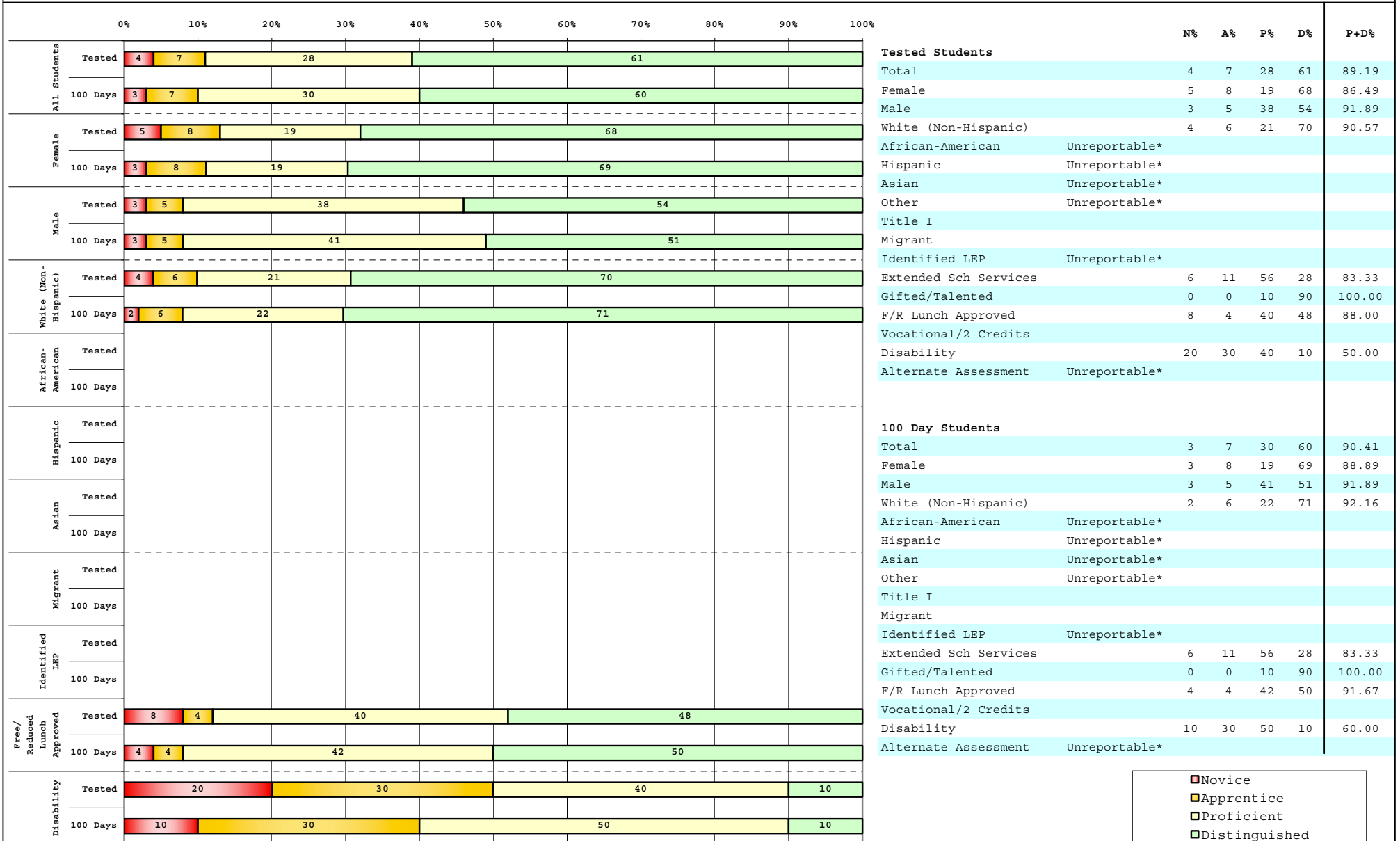


The horizontal bar represents the percent of students scoring at a performance level within a particular year. Percentages may not sum to 100% due to rounding.



2008-2009
INTERIM PERFORMANCE REPORT
SCIENCE DISAGGREGATION
Performance Level Percents

School: Glendover Elementary School
 District: Fayette County
 Code: 165150
 Grade: 04



Percentage may not sum to 100% due to rounding. 'Unreportable*' indicates subpopulations with fewer than 10 students or subpopulations where all students score at the same performance level.



2008-2009
INTERIM PERFORMANCE REPORT
SCIENCE CORE CONTENT

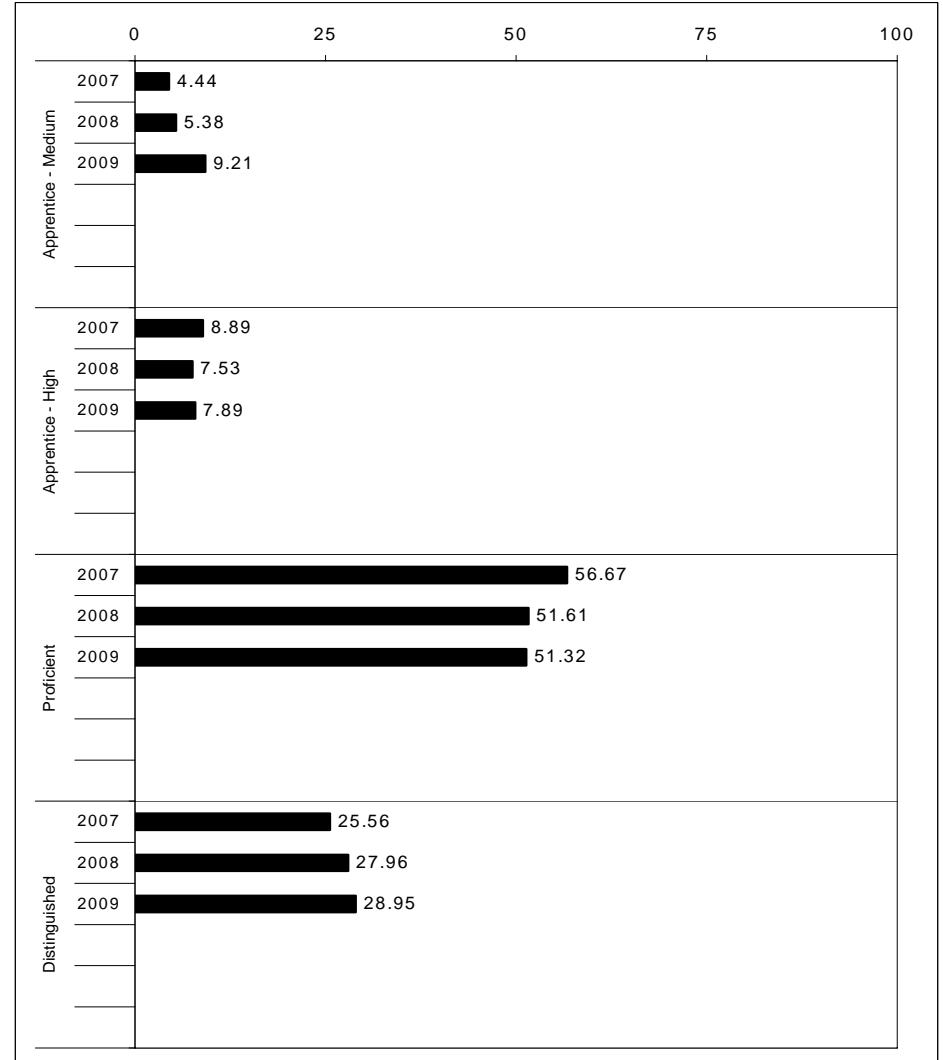
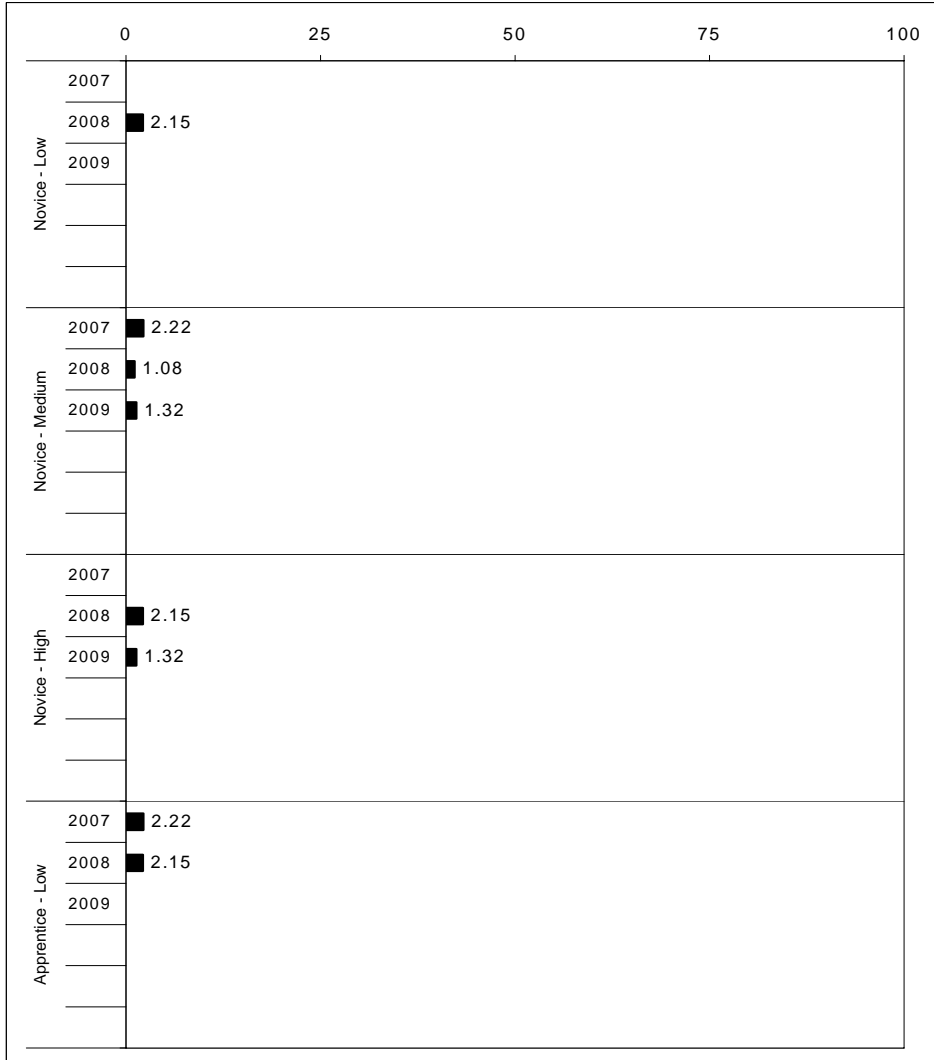
School: Glendover Elementary School
 District: Fayette County
 Code: 165150
 Grade: 04

	No. Items	No. Observations	SCHOOL								Std. Err.	No. Observations	STATE						School -State Mean
			B	0	1	2	3	4	Mean	B			0	1	2	3	4	Mean	
OPEN RESPONSE																			
1.x.x - Physical Science	2	24	0	0	13	33	38	17	2.6	0.2	16,337	0	17	19	42	17	5	1.7	0.9
2.x.x - Earth Space Science	3	93	0	3	18	35	31	12	2.3	0.1	65,658	0	12	22	35	26	4	1.9	0.4
3.x.x - Biological Science	3	96	1	0	7	18	59	15	2.8	0.1	65,506	0	2	11	33	44	9	2.5	0.3
4.x.x - Unifying Concepts	2	81	1	0	7	21	33	37	3.0	0.1	57,508	0	3	13	33	35	15	2.5	0.5
MULTIPLE CHOICE																			
			Correct	Incorrect	Omit/Mult							Correct	Incorrect	Omit/Mult					
1.x.x - Physical Science	18	568	90	9	1				0.90	0.02	393,336	82	18	0				0.81	0.09
2.x.x - Earth Space Science	19	582	84	15	1				0.84	0.02	401,488	71	29	0				0.71	0.13
3.x.x - Biological Science	22	675	86	14	1				0.85	0.02	467,138	78	22	0				0.78	0.07
4.x.x - Unifying Concepts	14	461	94	5	1				0.94	0.02	319,534	84	15	0				0.84	0.10



2008-2009
INTERIM PERFORMANCE REPORT
SOCIAL STUDIES TREND DATA
Performance Level Percents

School: Glendover Elementary School
 District: Fayette County
 Code: 165150
 Grade: 05



The horizontal bar represents the percent of students scoring at a performance level within a particular year. Percentages may not sum to 100% due to rounding.



**2008-2009
INTERIM PERFORMANCE REPORT
SOCIAL STUDIES DISAGGREGATION
Performance Level Percents**

School: Glendover Elementary School
District: Fayette County
Code: 165150
Grade: 05

		0%	10%	20%	30%	40%	50%	60%	70%	80%	90%	100%	N%	A%	P%	D%	P+D%		
All Students	Tested	4	17	51				29											
	100 Days	3	17	51				29											
Female	Tested	3	13	53				33											
	100 Days	3	13	53				33											
Male	Tested	5	22	49				24											
	100 Days	3	22	50				25											
White (Non-Hispanic)	Tested	7	55				39												
	100 Days	7	55				39												
African-American	Tested																		
	100 Days																		
Hispanic	Tested	7	33	47				13											
	100 Days		36	50				14											
Asian	Tested	20		50				30											
	100 Days	20		50				30											
Migrant	Tested																		
	100 Days																		
Identified LEP	Tested																		
	100 Days																		
Free/Reduced Lunch Approved	Tested	4	29	58				8											
	100 Days	4	29	58				8											
Disability	Tested																		
	100 Days																		

		N%	A%	P%	D%	P+D%
Tested Students						
Total		4	17	51	29	79.22
Female		3	13	53	33	85.00
Male		5	22	49	24	72.97
White (Non-Hispanic)		0	7	55	39	93.18
African-American	Unreportable*					
Hispanic		7	33	47	13	60.00
Asian		0	20	50	30	80.00
Other						
Title I						
Migrant						
Identified LEP	Unreportable*					
Extended Sch Services		7	33	47	13	60.00
Gifted/Talented		0	0	43	57	100.00
F/R Lunch Approved		4	29	58	8	66.67
Vocational/2 Credits						
Disability	Unreportable*					
Alternate Assessment	Unreportable*					
100 Day Students						
Total		3	17	51	29	80.26
Female		3	13	53	33	85.00
Male		3	22	50	25	75.00
White (Non-Hispanic)		0	7	55	39	93.18
African-American	Unreportable*					
Hispanic		0	36	50	14	64.29
Asian		0	20	50	30	80.00
Other						
Title I						
Migrant						
Identified LEP	Unreportable*					
Extended Sch Services		7	33	47	13	60.00
Gifted/Talented		0	0	43	57	100.00
F/R Lunch Approved		4	29	58	8	66.67
Vocational/2 Credits						
Disability	Unreportable*					
Alternate Assessment	Unreportable*					

■ Novice
■ Apprentice
■ Proficient
■ Distinguished

Percentage may not sum to 100% due to rounding. 'Unreportable*' indicates subpopulations with fewer than 10 students or subpopulations where all students score at the same performance level.



2008-2009
INTERIM PERFORMANCE REPORT
SOCIAL STUDIES CORE CONTENT

School: Glendover Elementary School
 District: Fayette County
 Code: 165150
 Grade: 05

	No. Items	No. Observations	SCHOOL								STATE								School -State Mean
			Percents						Mean	Std. Err.	Percents						Mean		
			B	0	1	2	3	4					No. Observations	B	0	1		2	3
OPEN RESPONSE																			
1.x.x - Government & Civics	2	91	0	4	26	51	11	8	1.9	0.1	56,903	0	5	37	45	10	2	1.7	0.2
2.x.x - Cultures & Societies	1	9							***		8,151	0	4	21	56	15	4	1.9	
3.x.x - Economics	1	75	0	11	25	47	13	4	1.7	0.1	48,828	0	11	33	41	12	3	1.6	0.1
4.x.x - Geography	2	22	0	5	14	59	18	5	2.0	0.2	16,077	0	9	32	39	17	3	1.7	0.3
5.x.x - Historical Perspective	3	103	0	2	28	51	17	1	1.9	0.1	65,353	0	7	35	46	10	2	1.7	0.2
MULTIPLE CHOICE																			
			Correct	Incorrect	Omit/Mult							Correct	Incorrect	Omit/Mult					
1.x.x - Government & Civics	14	484	74	26	0				0.74	0.02	317,571	66	34	0				0.66	0.08
2.x.x - Cultures & Societies	11	328	85	15	0				0.84	0.03	211,383	70	30	0				0.69	0.15
3.x.x - Economics	11	391	78	22	0				0.78	0.02	252,215	73	27	0				0.73	0.05
4.x.x - Geography	16	567	78	22	0				0.78	0.02	374,337	66	34	0				0.66	0.12
5.x.x - Historical Perspective	27	905	84	16	0				0.84	0.02	586,076	69	31	0				0.69	0.15



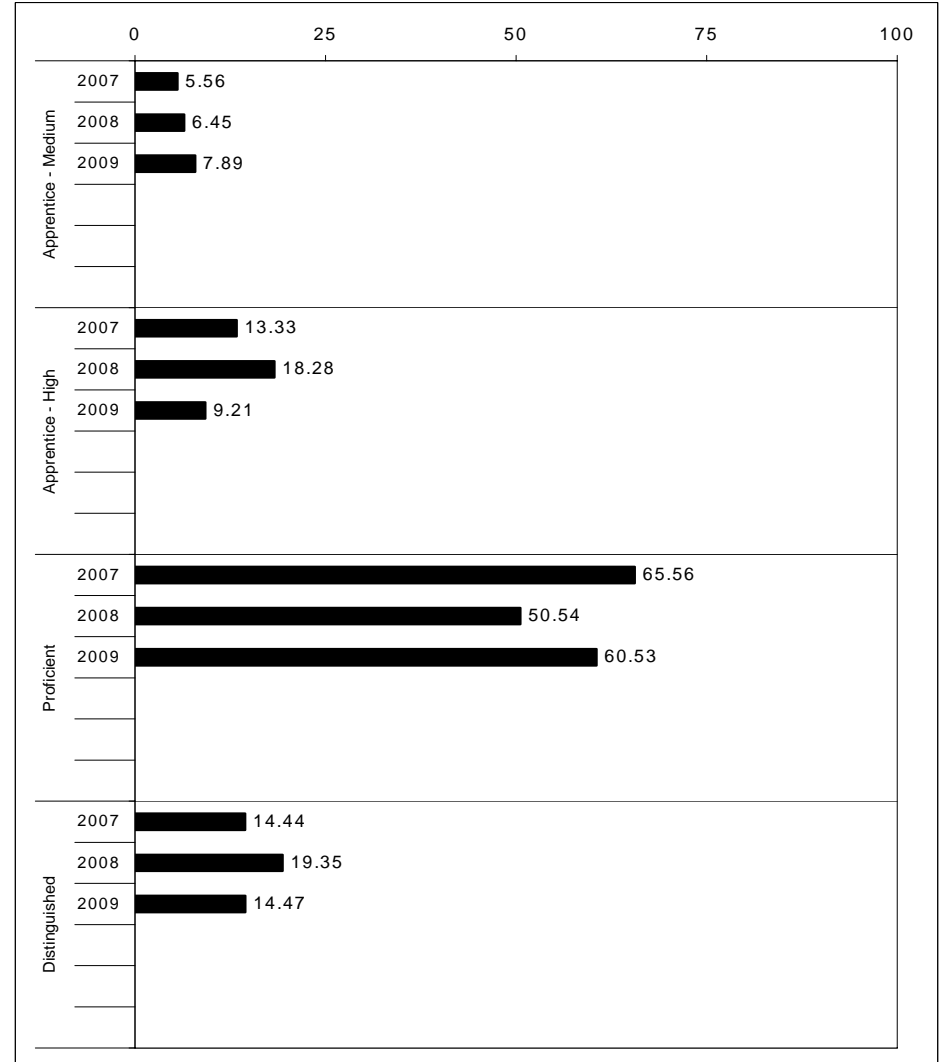
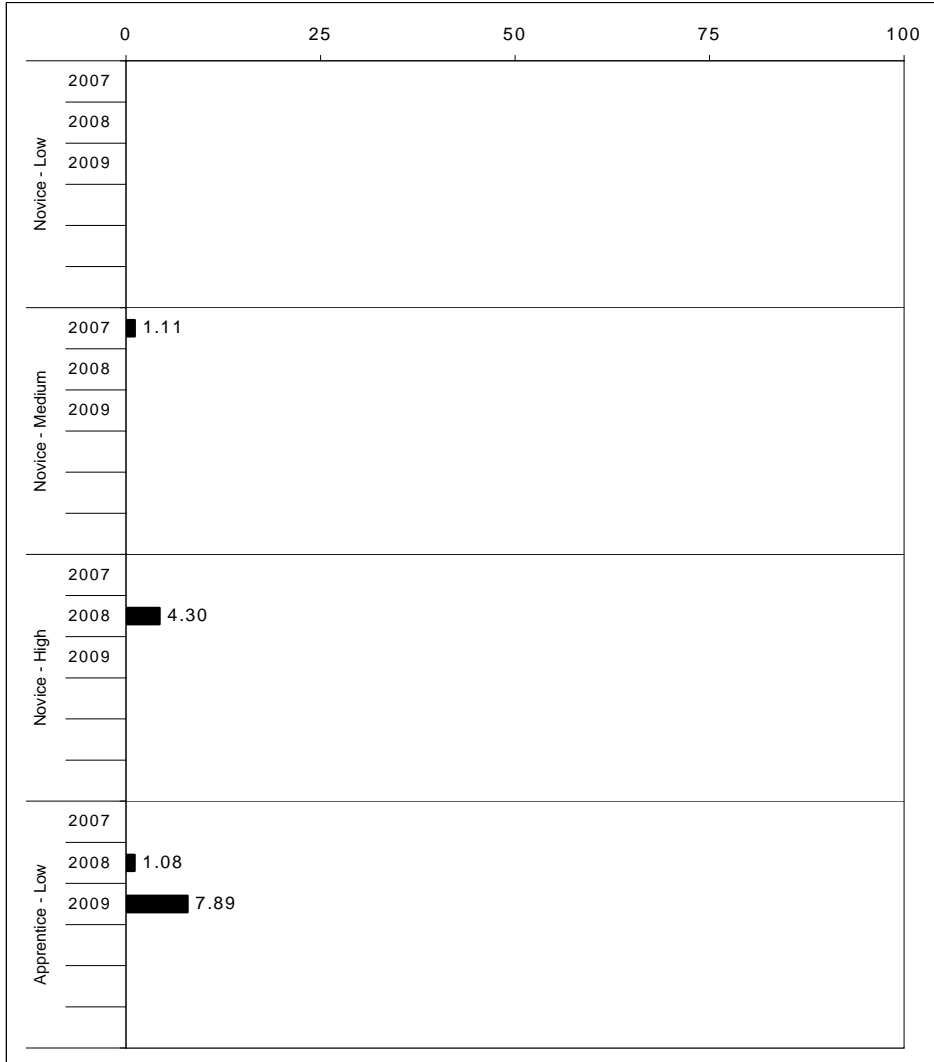
2008-2009
INTERIM PERFORMANCE REPORT
WRITING ON-DEMAND TREND DATA
Performance Level Percents

School: Glendover Elementary School

District: Fayette County

Code: 165150

Grade: 05

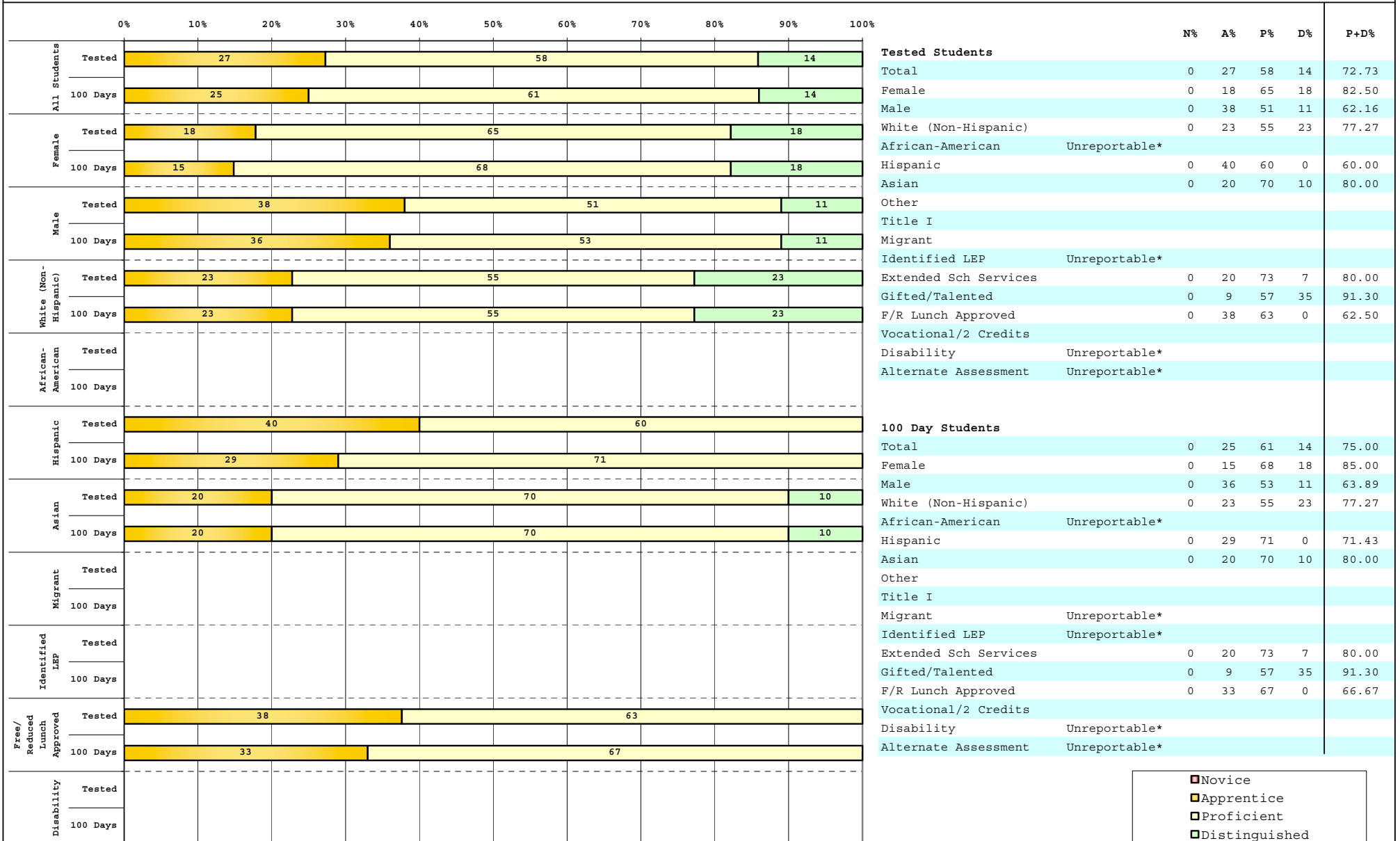


The horizontal bar represents the percent of students scoring at a performance level within a particular year. Percentages may not sum to 100% due to rounding.



**2008-2009
INTERIM PERFORMANCE REPORT
WRITING ON-DEMAND DISAGGREGATION
Performance Level Percents**

School: Glendover Elementary School
District: Fayette County
Code: 165150
Grade: 05



	Novice
	Apprentice
	Proficient
	Distinguished

Percentage may not sum to 100% due to rounding. 'Unreportable*' indicates subpopulations with fewer than 10 students or subpopulations where all students score at the same performance level.



2008-2009
INTERIM PERFORMANCE REPORT
WRITING ON-DEMAND CORE CONTENT

School: Glendover Elementary School
 District: Fayette County
 Code: 165150
 Grade: 05

WRITING PROMPT	SCHOOL												STATE												School
	No. Observations	Percents											Mean	Percents											Mean
	B	0	1	2	3	4	5	6	7	8		B	0	1	2	3	4	5	6	7	8				
Inform																									
1.X.X - Content	28	0	0	0	11	7	36	18	21	0	7	4.61	0	1	1	9	9	34	18	21	4	2	4.43	0.18	
2.X.X - Structure	28	0	0	4	7	7	39	14	21	0	7	4.54	0	1	2	9	10	35	19	19	3	1	4.33	0.21	
3.X.X - Convention	28	0	0	0	7	7	43	14	21	0	7	4.64	0	0	0	12	11	34	19	19	3	1	4.38	0.26	
Narrate for a purpose																									
1.X.X - Content	23	0	0	0	9	9	30	30	22	0	0	4.48	0	1	1	10	9	36	18	21	3	1	4.35	0.13	
2.X.X - Structure	23	0	0	0	9	4	39	17	30	0	0	4.57	0	1	2	10	10	37	17	19	3	1	4.27	0.30	
3.X.X - Convention	23	0	0	0	9	4	39	22	26	0	0	4.52	0	0	0	12	10	36	18	19	3	1	4.33	0.19	
Persuade																									
1.X.X - Content	24	0	0	0	13	13	17	21	25	8	4	4.75	0	1	1	8	8	33	19	21	5	3	4.50	0.25	
2.X.X - Structure	24	0	4	0	8	13	17	17	29	8	4	4.71	0	2	2	9	10	33	19	20	5	2	4.42	0.29	
3.X.X - Convention	24	0	0	0	17	8	17	17	29	8	4	4.75	0	0	0	11	10	32	19	20	5	2	4.50	0.25	

MULTIPLE CHOICE	No. Items	SCHOOL						STATE						School
		No. Observations	Percents			Mean	Std. Err.	No. Observations	Percents			Mean	-State Mean	
			Correct	Incorrect	Omit/Mult				Correct	Incorrect	Omit/Mult			
4.x.x - Writing Process	52	900	85	15	0	0.85	0.01	585,936	73	27	0	0.73	0.12	
4.10.x - Revising	16	205	80	20	1	0.80	0.03	130,317	66	34	0	0.66	0.14	
4.11.x - Editing	36	695	86	14	0	0.86	0.02	455,619	75	24	0	0.75	0.11	