



Interim Performance Report

In March 2009, the Kentucky General Assembly passed Senate Bill 1 (SB1) that was subsequently signed into law by the Governor. SB1 calls for a significant overhaul of the state's assessment and accountability system. The new assessment system begins in the spring of 2012. The school years of 2008-2009, 2009-2010 and 2010-2011 are described in SB1 as an interim period. This three-year period allows Kentucky to develop the new assessment system and to carry on state and federal testing requirements.

The Interim Performance Report includes the Kentucky Core Content Test (KCCT) in Reading (grades 3-8 and 10), Mathematics (grades 3-8 and 11), Science (grades 4, 7 and 11), Social Studies (grades 5, 8 and 11) and Writing On-Demand (grades 5, 8 and 12). The KCCT is based on the Kentucky Core Content for Assessment (Version 4.1) and contains multiple choice and open response questions. The Writing On-Demand test uses writing prompts that require students to craft a piece of writing in a 60 minute period.

The KCCT is developed under the direction of content advisory committees of Kentucky educators who draft, review and select test questions. All test items are reviewed by a bias review committee to enhance the fairness of items for all Kentucky students.

The KCCT continues to fulfill the requirements of the federal statute known as the No Child Left Behind Act of 2001. A separate accountability report for No Child Left Behind (NCLB) is published by the Kentucky Department of Education.

The Interim Performance Report focuses entirely on the five state-required content areas and provides data for schools or districts. The data in this report is not used directly for state accountability; although, these results can fulfill the requirements of Senate Bill 168 from 2002 and may be used by schools or districts for their own local accountability needs.

Performance standards are based on descriptions of Novice, Apprentice, Proficient and Distinguished (NAPD) student performance levels specific to the content area and grade being assessed. The performance standards, in conjunction with Kentucky's Core Content for Assessment, should allow instruction to better focus on the content area to be taught and on how well students must demonstrate achievement in each content area.

Reporting Changes for 2009

Based on SB1, Kentucky will not be reporting state accountability and academic indices as in the past. The report does have several familiar pages with performance level (NAPD) trend, core content and disaggregation data per content area. Districts and schools will still see distributions of how students scored in the Novice (with sublevels), Apprentice (with sublevels), Proficient and Distinguished performance levels.

Confidentiality Changes

Due to federal regulations around the Family Education Rights and Privacy Act (FERPA), the numbers of students have been removed. Though there is a need to report as much data as possible, there is also a paramount need to maintain the confidential aspects of individual scores. When scores are reported in what is commonly called "small cells" where very few students may be categorized, there is the possibility of revealing individual scores when numbers are reported. Numbers are reported to each district in a confidential report that accompanies the public Interim Performance Report.

2008-2009

INTERIM PERFORMANCE REPORT

School: Garden Springs Elementary School

District: Fayette County

Code: 165037

Grade: PRIMARY-05

CONTENTS OF THIS REPORT

Introduction	1
Academic Trend Data	
Reading Results	2-8
Mathematics Results	9-15
Science Results	16-18
Social Studies Results	19-21
Writing Results	22-24

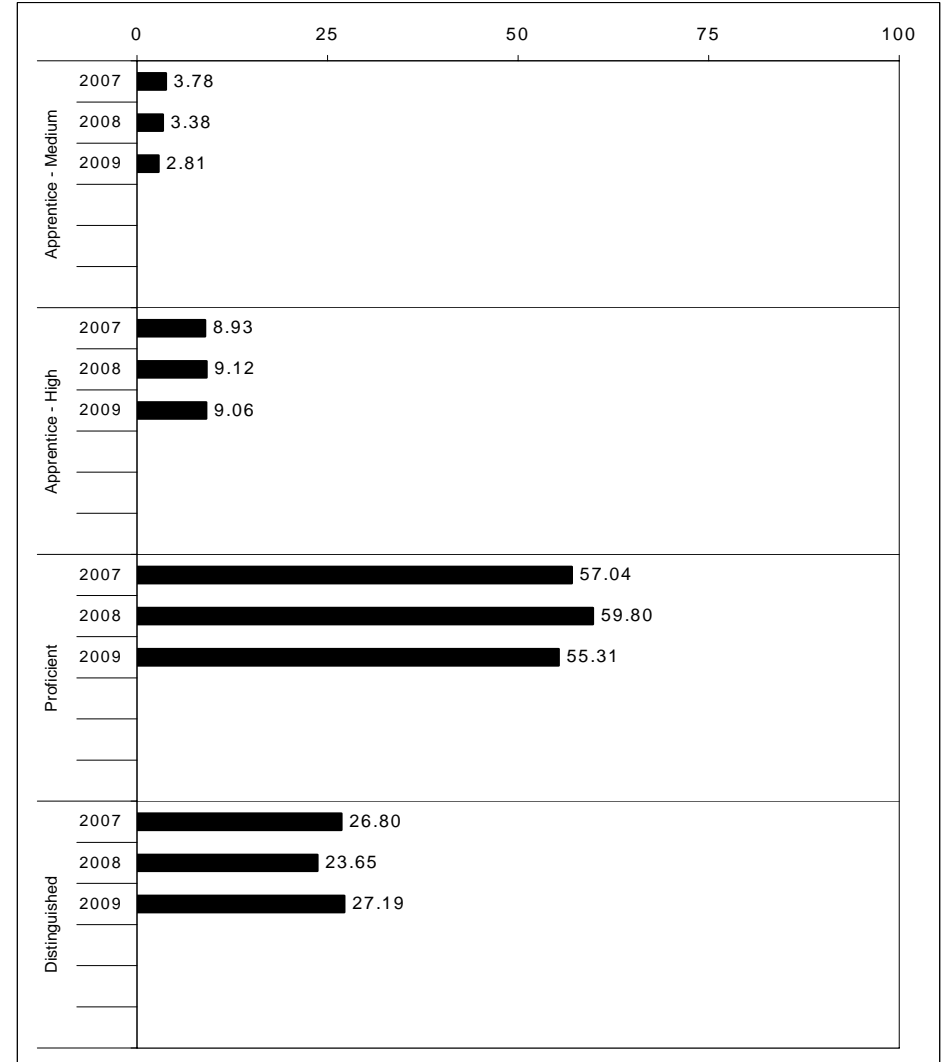
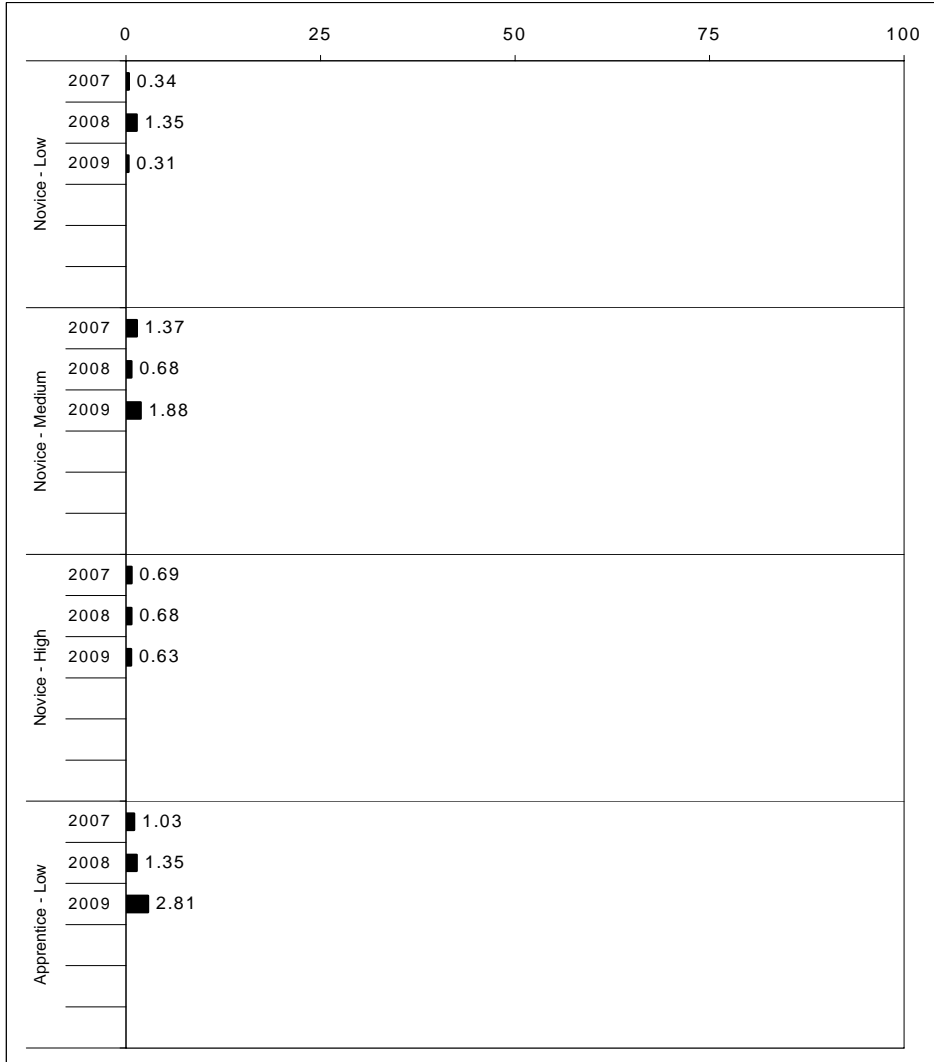
For more information, refer to the 2009 Interim Assessment Interpretative Guide on the Kentucky Department of Education Web site (www.education.ky.gov).





2008-2009
INTERIM PERFORMANCE REPORT
READING TREND DATA
Performance Level Percents

School: Garden Springs Elementary School
 District: Fayette County
 Code: 165037
 Grade: ELEMENTARY



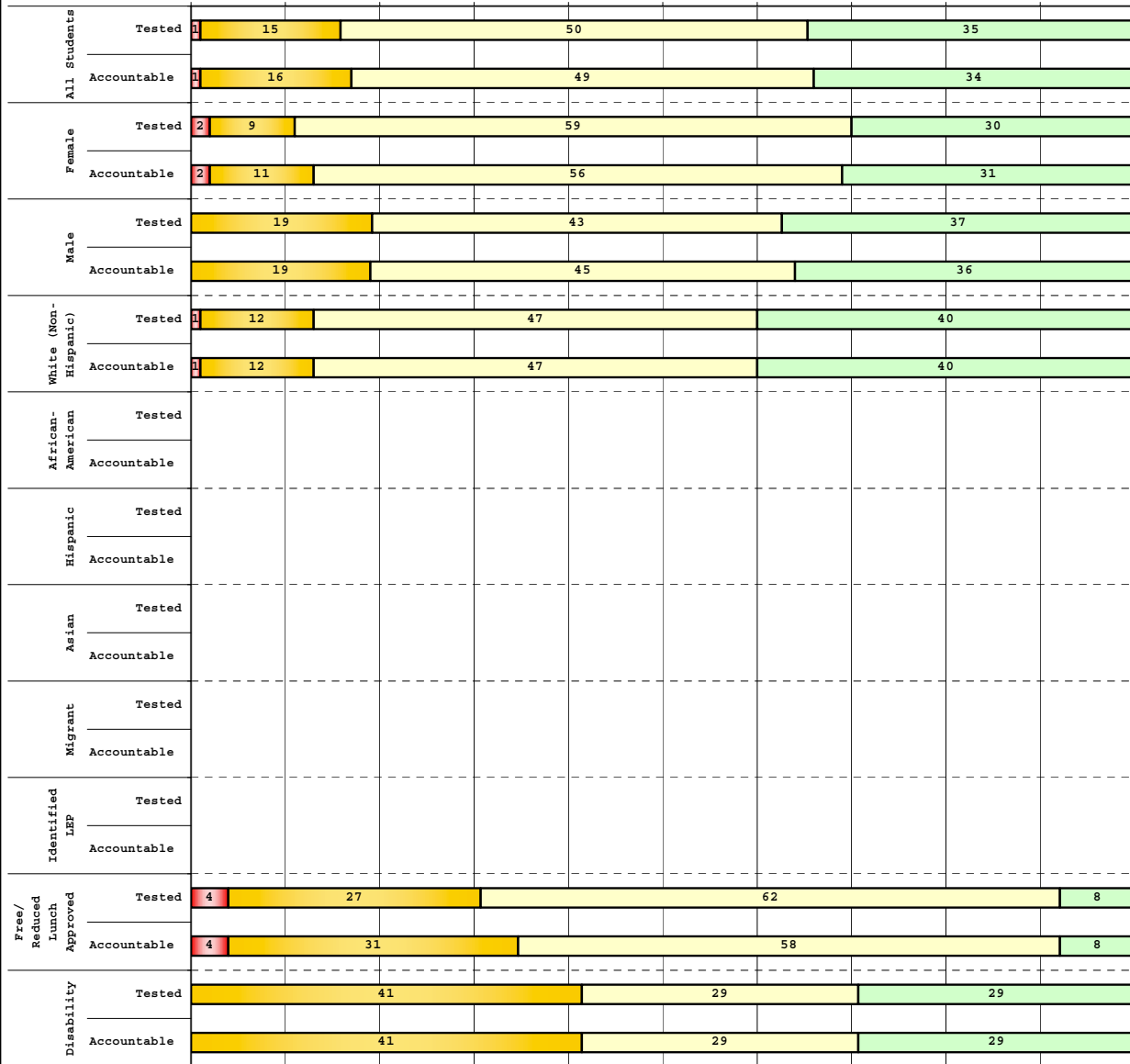
The horizontal bar represents the percent of students scoring at a performance level within a particular year. Percentages may not sum to 100% due to rounding.



**2008-2009
INTERIM PERFORMANCE REPORT
READING DISAGGREGATION
Performance Level Percents**

School: Garden Springs Elementary School
 District: Fayette County
 Code: 165037
 Grade: 03

0% 10% 20% 30% 40% 50% 60% 70% 80% 90% 100%



Category	N%	A%	P%	D%	P+D%
Tested Students					
Total	1	15	50	35	84.07
Female	2	9	59	30	89.13
Male	0	19	43	37	80.60
White (Non-Hispanic)	1	12	47	40	86.96
African-American	Unreportable*				
Hispanic	Unreportable*				
Asian	Unreportable*				
Other	Unreportable*				
Title I					
Migrant					
Identified LEP	Unreportable*				
Extended Sch Services	Unreportable*				
Gifted/Talented	0	0	18	82	100.00
F/R Lunch Approved	4	27	62	8	69.23
Vocational/2 Credits					
Disability	0	41	29	29	58.82
Alternate Assessment					
NCLB Accountable Students					
Total	1	16	49	34	83.04
Female	2	11	56	31	86.67
Male	0	19	45	36	80.60
White (Non-Hispanic)	1	12	47	40	87.10
African-American	Unreportable*				
Hispanic	Unreportable*				
Asian	Unreportable*				
Other	Unreportable*				
Title I					
Migrant					
Identified LEP	Unreportable*				
Extended Sch Services	Unreportable*				
Gifted/Talented	0	0	19	81	100.00
F/R Lunch Approved	4	31	58	8	65.38
Vocational/2 Credits					
Disability	0	41	29	29	58.82
Alternate Assessment					

■ Novice
■ Apprentice
■ Proficient
■ Distinguished

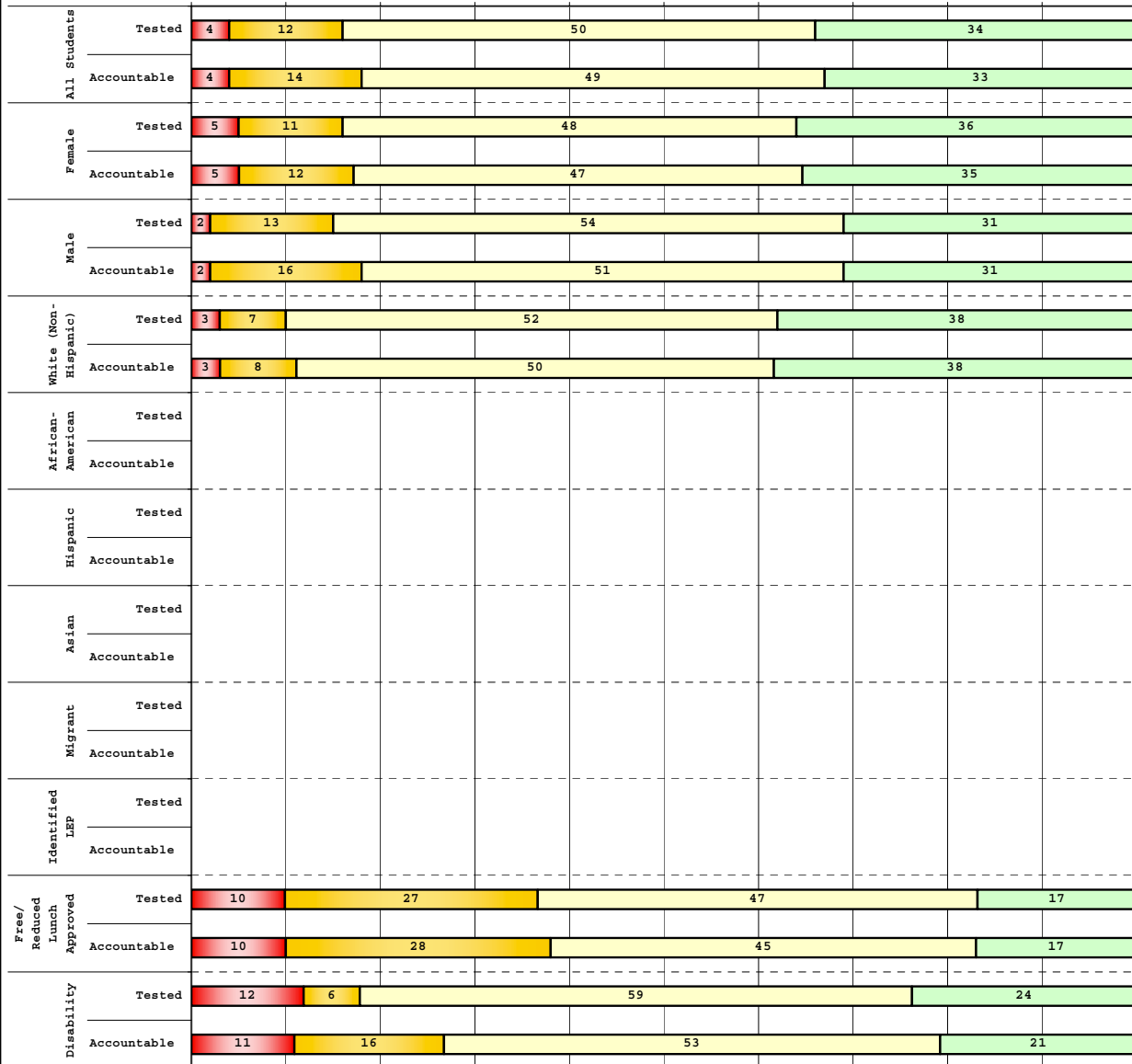
Percentage may not sum to 100% due to rounding. 'Unreportable*' indicates subpopulations with fewer than 10 students or subpopulations where all students score at the same performance level.



**2008-2009
INTERIM PERFORMANCE REPORT
READING DISAGGREGATION
Performance Level Percents**

School: Garden Springs Elementary School
 District: Fayette County
 Code: 165037
 Grade: 04

0% 10% 20% 30% 40% 50% 60% 70% 80% 90% 100%



	N%	A%	P%	D%	P+D%
Tested Students					
Total	4	12	50	34	84.40
Female	5	11	48	36	83.61
Male	2	13	54	31	85.42
White (Non-Hispanic)	3	7	52	38	89.77
African-American	Unreportable*				
Hispanic	Unreportable*				
Asian	Unreportable*				
Other	0	20	60	20	80.00
Title I					
Migrant					
Identified LEP	Unreportable*				
Extended Sch Services	Unreportable*				
Gifted/Talented	3	6	31	60	91.43
F/R Lunch Approved	10	27	47	17	63.33
Vocational/2 Credits					
Disability	12	6	59	24	82.35
Alternate Assessment					
NCLB Accountable Students					
Total	4	14	49	33	82.08
Female	5	12	47	35	82.46
Male	2	16	51	31	81.63
White (Non-Hispanic)	3	8	50	38	88.37
African-American	Unreportable*				
Hispanic	Unreportable*				
Asian	Unreportable*				
Other	Unreportable*				
Title I					
Migrant					
Identified LEP	Unreportable*				
Extended Sch Services	Unreportable*				
Gifted/Talented	3	6	31	60	91.43
F/R Lunch Approved	10	28	45	17	62.07
Vocational/2 Credits					
Disability	11	16	53	21	73.68
Alternate Assessment					

■ Novice
■ Apprentice
■ Proficient
■ Distinguished

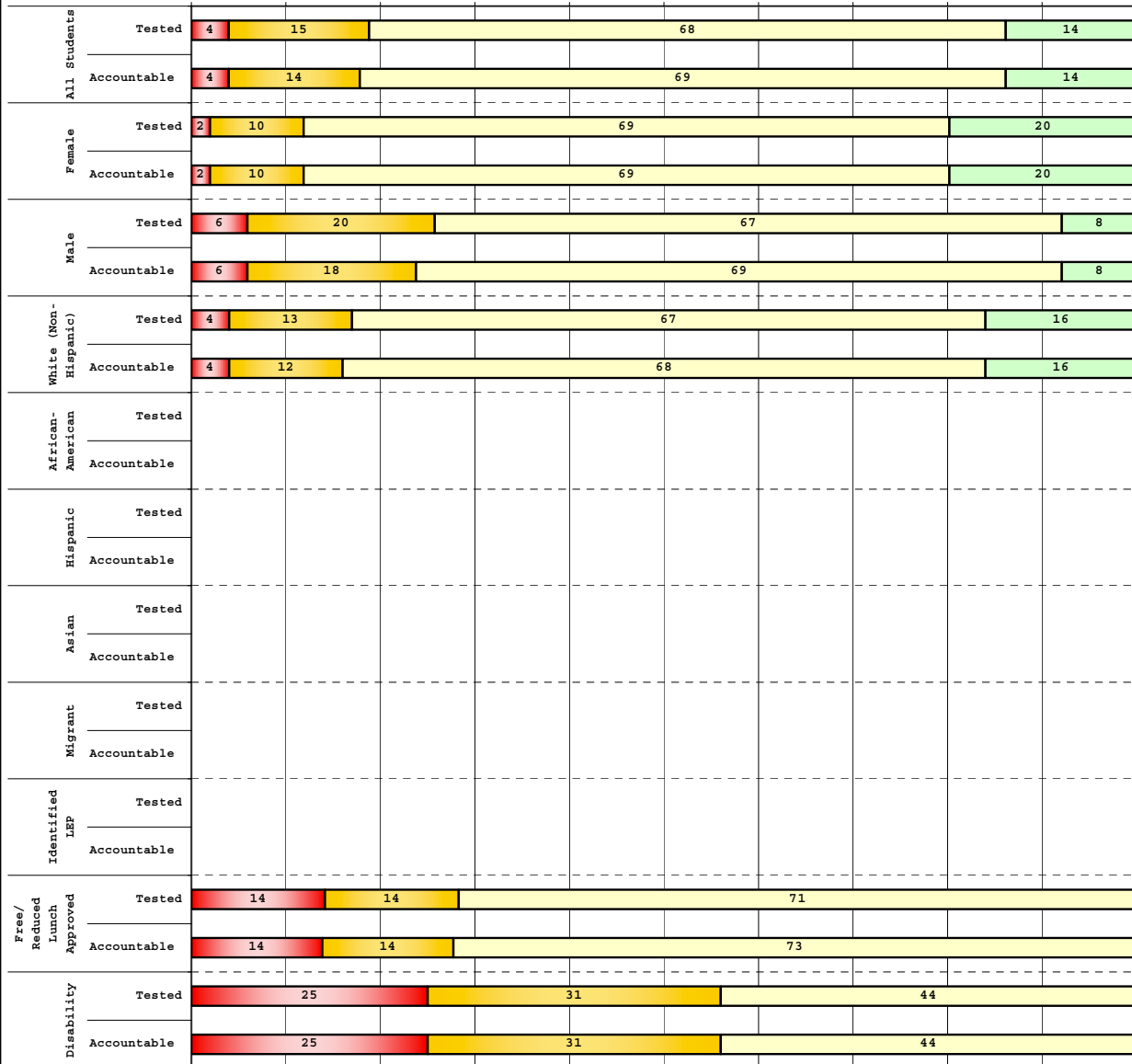
Percentage may not sum to 100% due to rounding. 'Unreportable*' indicates subpopulations with fewer than 10 students or subpopulations where all students score at the same performance level.



**2008-2009
INTERIM PERFORMANCE REPORT
READING DISAGGREGATION
Performance Level Percents**

School: Garden Springs Elementary School
 District: Fayette County
 Code: 165037
 Grade: 05

0% 10% 20% 30% 40% 50% 60% 70% 80% 90% 100%



Subgroup	N%	A%	P%	D%	P+D%
Tested Students					
Total	4	15	68	14	81.37
Female	2	10	69	20	88.24
Male	6	20	67	8	74.51
White (Non-Hispanic)	4	13	67	16	83.13
African-American	Unreportable*				
Hispanic	Unreportable*				
Asian	Unreportable*				
Other	Unreportable*				
Title I					
Migrant					
Identified LEP	Unreportable*				
Extended Sch Services	Unreportable*				
Gifted/Talented	0	3	66	31	96.55
F/R Lunch Approved	14	14	71	0	71.43
Vocational/2 Credits					
Disability	25	31	44	0	43.75
Alternate Assessment					
NCLB Accountable Students					
Total	4	14	69	14	82.35
Female	2	10	69	20	88.24
Male	6	18	69	8	76.47
White (Non-Hispanic)	4	12	68	16	84.15
African-American	Unreportable*				
Hispanic	Unreportable*				
Asian	Unreportable*				
Other	Unreportable*				
Title I					
Migrant					
Identified LEP	Unreportable*				
Extended Sch Services	Unreportable*				
Gifted/Talented	0	3	67	30	96.67
F/R Lunch Approved	14	14	73	0	72.73
Vocational/2 Credits					
Disability	25	31	44	0	43.75
Alternate Assessment					

■ Novice
■ Apprentice
■ Proficient
■ Distinguished

Percentage may not sum to 100% due to rounding. 'Unreportable*' indicates subpopulations with fewer than 10 students or subpopulations where all students score at the same performance level.



2008-2009
INTERIM PERFORMANCE REPORT
READING CORE CONTENT

School: Garden Springs Elementary School
 District: Fayette County
 Code: 165037
 Grade: 03

	No. Items	No. Observations	SCHOOL								Std. Err.	No. Observations	STATE								School -State Mean
			B	0	1	2	3	4	Mean	B			0	1	2	3	4	Mean			
OPEN RESPONSE																					
2.0.x - Developing Understanding	2	224	0	5	23	42	25	5	2.0	0.1	100,212	0	10	30	44	14	2	1.7	0.3		
3.0.x - Interpreting Text	2	224	0	5	23	42	25	5	2.0	0.1	100,212	0	10	30	44	14	2	1.7	0.3		
MULTIPLE CHOICE																					
1.0.x - Forming a Foundation	32	870	89	11	0				0.89	0.01	392,589	83	17	0				0.83	0.06		
2.0.x - Developing Understanding	89	2,222	84	16	0				0.84	0.01	993,477	80	20	0				0.80	0.04		
3.0.x - Interpreting Text	31	1,066	82	18	0				0.82	0.01	468,115	77	23	0				0.77	0.05		
5.0.x - Critical Stance	15	441	87	13	0				0.87	0.02	208,359	79	21	0				0.79	0.08		



2008-2009
INTERIM PERFORMANCE REPORT
READING CORE CONTENT

School: Garden Springs Elementary School
 District: Fayette County
 Code: 165037
 Grade: 04

	No. Items	No. Observations	SCHOOL							Mean	Std. Err.	No. Observations	STATE							Mean	School -State Mean
			B	0	1	2	3	4	B				0	1	2	3	4				
OPEN RESPONSE																					
2.0.x - Developing Understanding	5	181	0	1	17	50	28	5	2.2	0.1	81,849	0	3	24	52	18	3	1.9	0.3		
3.0.x - Interpreting Text	6	281	0	4	15	44	31	7	2.2	0.1	131,199	0	4	22	45	23	5	2.0	0.2		
MULTIPLE CHOICE																					
1.0.x - Forming a Foundation	34	847	75	26	0				0.74	0.02	401,452	72	28	0				0.71	0.03		
2.0.x - Developing Understanding	76	1,875	78	22	0				0.78	0.01	868,422	73	27	0				0.73	0.05		
3.0.x - Interpreting Text	29	624	85	15	0				0.85	0.02	278,648	79	21	0				0.79	0.06		
5.0.x - Critical Stance	9	346	78	22	0				0.78	0.02	155,704	74	26	0				0.74	0.04		



2008-2009
INTERIM PERFORMANCE REPORT
READING CORE CONTENT

School: Garden Springs Elementary School
 District: Fayette County
 Code: 165037
 Grade: 05

	No. Items	No. Observations	SCHOOL								Mean	Std. Err.	No. Observations	STATE								Mean	School -State Mean
			B	0	1	2	3	4	Mean	B				0	1	2	3	4	Mean				
OPEN RESPONSE																							
2.0.x - Developing Understanding	6	188	0	2	25	48	20	5	2.0	0.1	89,507	0	5	23	48	20	5	2.0	0.0				
3.0.x - Interpreting Text	6	271	0	3	23	51	18	4	2.0	0.1	130,403	0	5	21	50	19	4	2.0	0.0				
MULTIPLE CHOICE																							
1.0.x - Forming a Foundation	28	555	78	21	1				0.78	0.02	268,187	74	26	0				0.74	0.04				
2.0.x - Developing Understanding	71	1,724	82	18	1				0.82	0.01	823,068	80	20	0				0.80	0.02				
3.0.x - Interpreting Text	27	715	83	17	0				0.83	0.01	341,653	81	19	0				0.81	0.02				
5.0.x - Critical Stance	17	628	77	22	1				0.77	0.02	300,671	75	25	0				0.75	0.02				



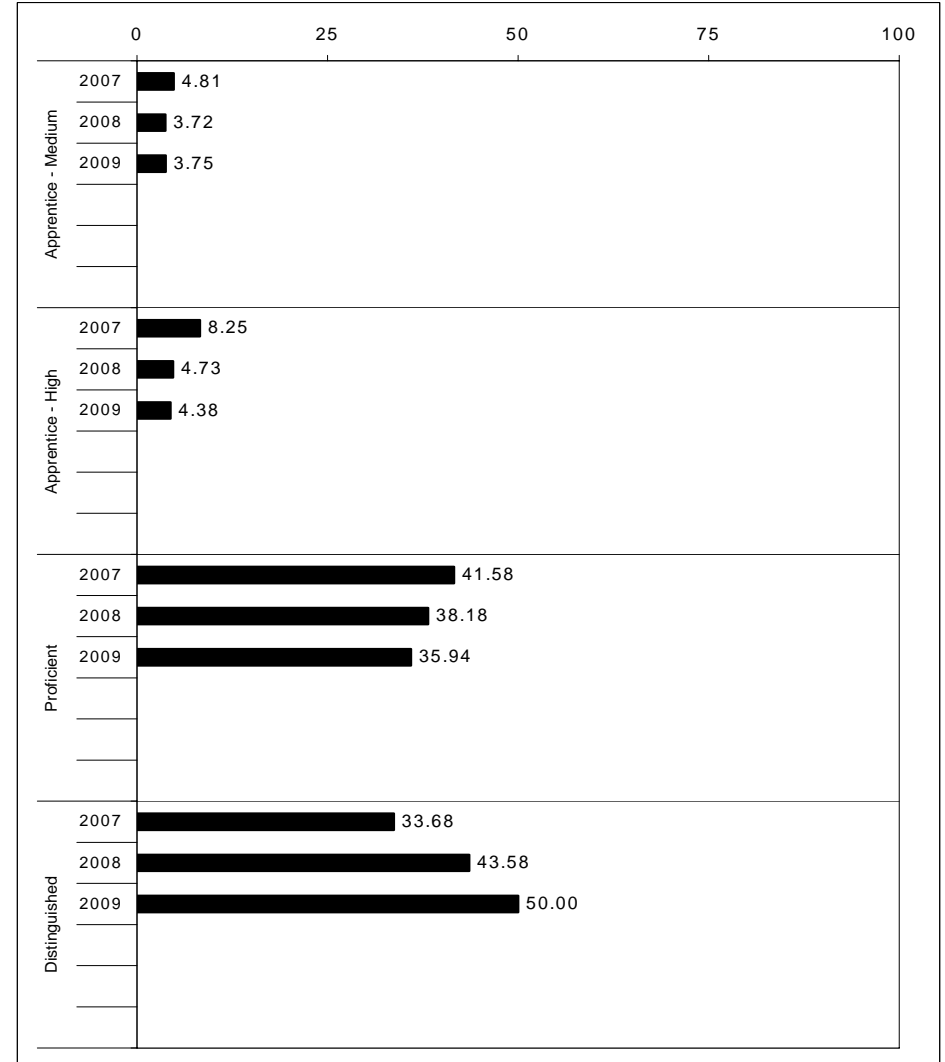
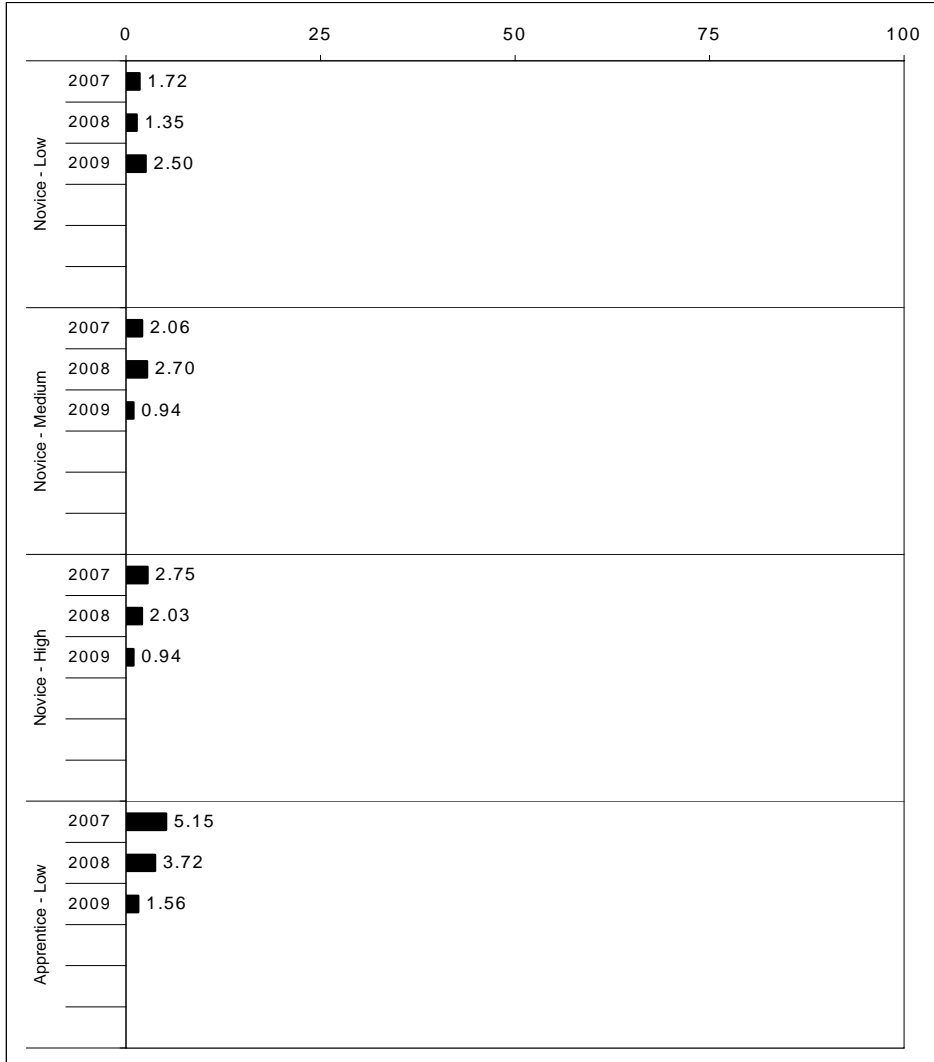
2008-2009
INTERIM PERFORMANCE REPORT
MATHEMATICS TREND DATA
Performance Level Percents

School: Garden Springs Elementary School

District: Fayette County

Code: 165037

Grade: ELEMENTARY



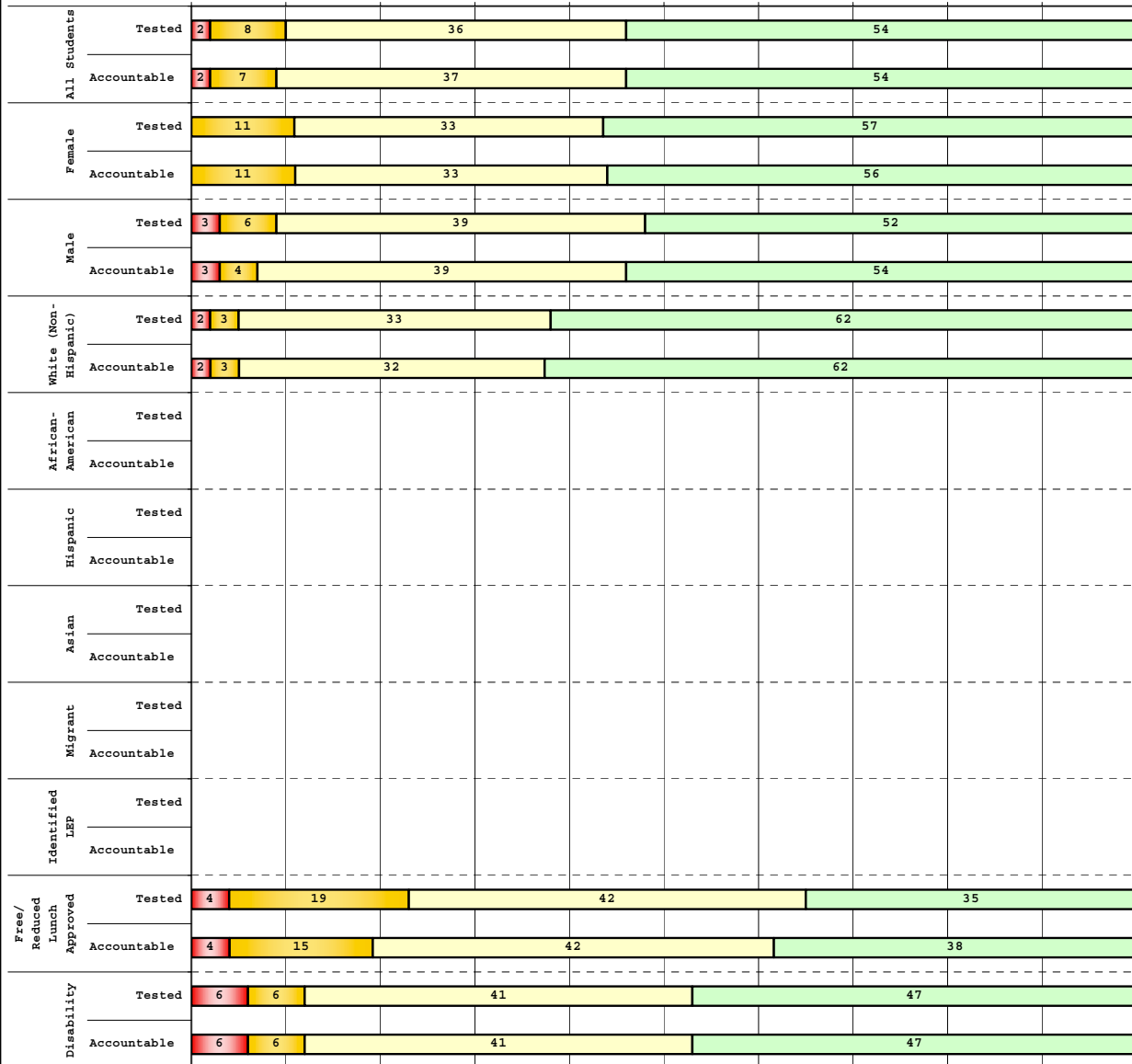
The horizontal bar represents the percent of students scoring at a performance level within a particular year. Percentages may not sum to 100% due to rounding.



2008-2009
INTERIM PERFORMANCE REPORT
MATHEMATICS DISAGGREGATION
Performance Level Percents

School: Garden Springs Elementary School
 District: Fayette County
 Code: 165037
 Grade: 03

0% 10% 20% 30% 40% 50% 60% 70% 80% 90% 100%



Category	N%	A%	P%	D%	P+D%
Tested Students					
Total	2	8	36	54	90.27
Female	0	11	33	57	89.13
Male	3	6	39	52	91.04
White (Non-Hispanic)	2	3	33	62	94.57
African-American	Unreportable*				
Hispanic	Unreportable*				
Asian	Unreportable*				
Other	Unreportable*				
Title I					
Migrant					
Identified LEP	Unreportable*				
Extended Sch Services	Unreportable*				
Gifted/Talented	0	0	6	94	100.00
F/R Lunch Approved	4	19	42	35	76.92
Vocational/2 Credits					
Disability	6	6	41	47	88.24
Alternate Assessment					
NCLB Accountable Students					
Total	2	7	37	54	91.07
Female	0	11	33	56	88.89
Male	3	4	39	54	92.54
White (Non-Hispanic)	2	3	32	62	94.62
African-American	Unreportable*				
Hispanic	Unreportable*				
Asian	Unreportable*				
Other	Unreportable*				
Title I					
Migrant					
Identified LEP	Unreportable*				
Extended Sch Services	Unreportable*				
Gifted/Talented	0	0	6	94	100.00
F/R Lunch Approved	4	15	42	38	80.77
Vocational/2 Credits					
Disability	6	6	41	47	88.24
Alternate Assessment					

■ Novice
■ Apprentice
■ Proficient
■ Distinguished

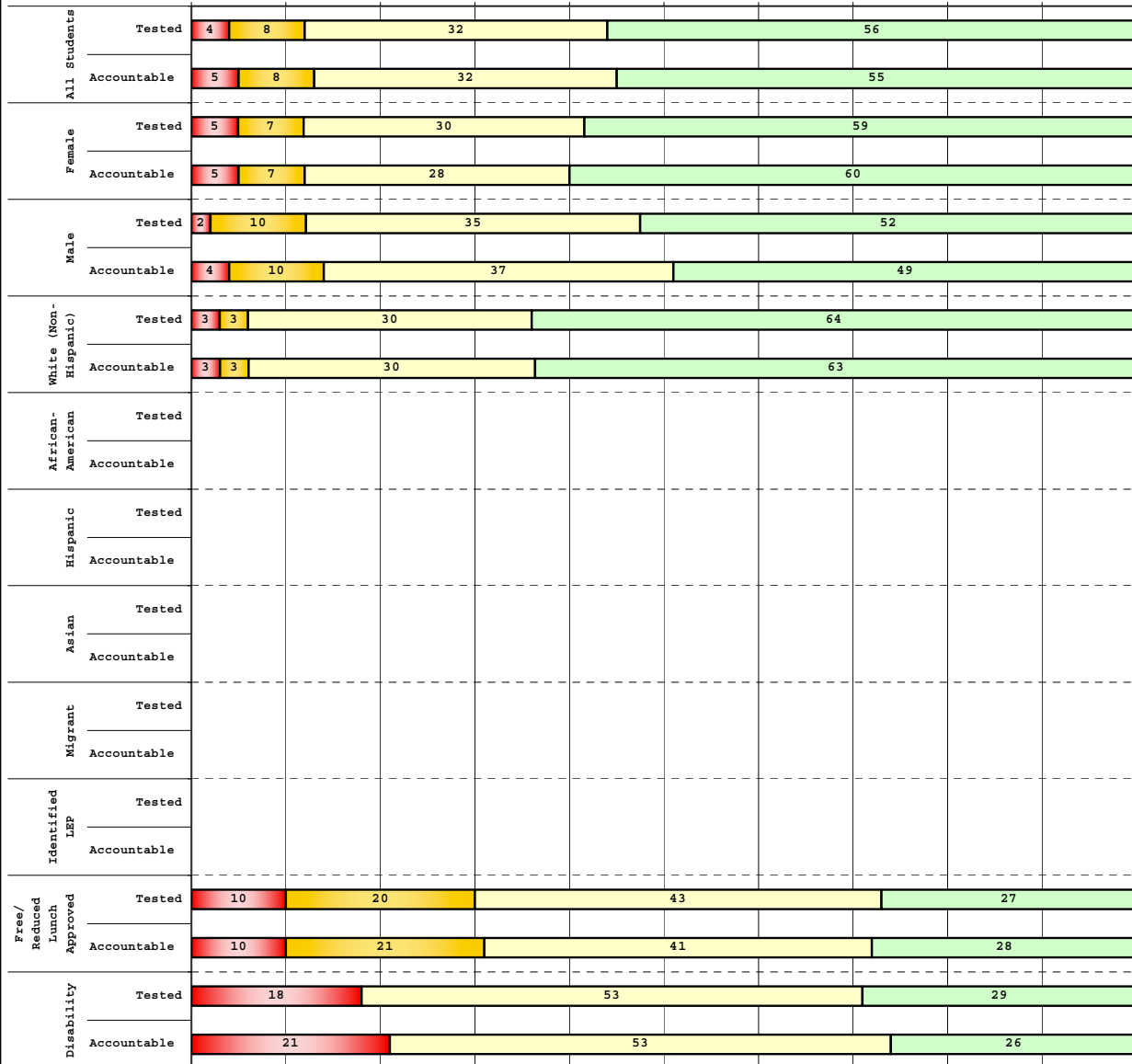
Percentage may not sum to 100% due to rounding. 'Unreportable*' indicates subpopulations with fewer than 10 students or subpopulations where all students score at the same performance level.



**2008-2009
INTERIM PERFORMANCE REPORT
MATHEMATICS DISAGGREGATION
Performance Level Percents**

School: Garden Springs Elementary School
 District: Fayette County
 Code: 165037
 Grade: 04

0% 10% 20% 30% 40% 50% 60% 70% 80% 90% 100%



Category	N%	A%	P%	D%	P+D%
Tested Students					
Total	4	8	32	56	88.07
Female	5	7	30	59	88.52
Male	2	10	35	52	87.50
White (Non-Hispanic)	3	3	30	64	93.18
African-American	Unreportable*				
Hispanic	Unreportable*				
Asian	Unreportable*				
Other	0	30	40	30	70.00
Title I					
Migrant					
Identified LEP	Unreportable*				
Extended Sch Services	Unreportable*				
Gifted/Talented	3	0	14	83	97.14
F/R Lunch Approved	10	20	43	27	70.00
Vocational/2 Credits					
Disability	18	0	53	29	82.35
Alternate Assessment					
NCLB Accountable Students					
Total	5	8	32	55	86.79
Female	5	7	28	60	87.72
Male	4	10	37	49	85.71
White (Non-Hispanic)	3	3	30	63	93.02
African-American	Unreportable*				
Hispanic	Unreportable*				
Asian	Unreportable*				
Other	Unreportable*				
Title I					
Migrant					
Identified LEP	Unreportable*				
Extended Sch Services	Unreportable*				
Gifted/Talented	3	0	14	83	97.14
F/R Lunch Approved	10	21	41	28	68.97
Vocational/2 Credits					
Disability	21	0	53	26	78.95
Alternate Assessment					

■ Novice
■ Apprentice
■ Proficient
■ Distinguished

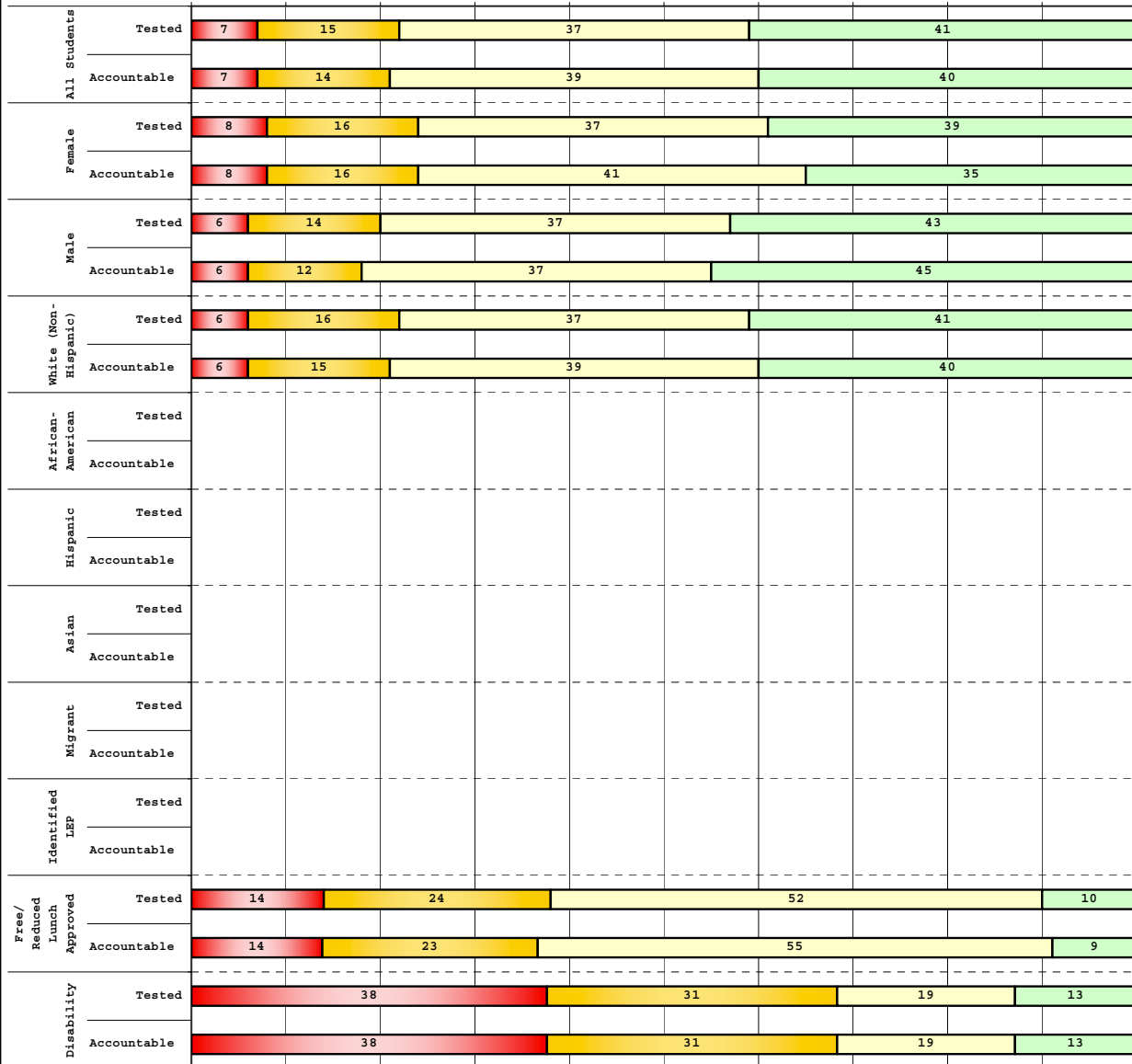
Percentage may not sum to 100% due to rounding. 'Unreportable*' indicates subpopulations with fewer than 10 students or subpopulations where all students score at the same performance level.



**2008-2009
INTERIM PERFORMANCE REPORT
MATHEMATICS DISAGGREGATION
Performance Level Percents**

School: Garden Springs Elementary School
 District: Fayette County
 Code: 165037
 Grade: 05

0% 10% 20% 30% 40% 50% 60% 70% 80% 90% 100%



	N%	A%	P%	D%	P+D%
Tested Students					
Total	7	15	37	41	78.43
Female	8	16	37	39	76.47
Male	6	14	37	43	80.39
White (Non-Hispanic)	6	16	37	41	78.31
African-American	Unreportable*				
Hispanic	Unreportable*				
Asian	Unreportable*				
Other	Unreportable*				
Title I					
Migrant					
Identified LEP	Unreportable*				
Extended Sch Services	Unreportable*				
Gifted/Talented	0	0	14	86	100.00
F/R Lunch Approved	14	24	52	10	61.90
Vocational/2 Credits					
Disability	38	31	19	13	31.25
Alternate Assessment					
NCLB Accountable Students					
Total	7	14	39	40	79.41
Female	8	16	41	35	76.47
Male	6	12	37	45	82.35
White (Non-Hispanic)	6	15	39	40	79.27
African-American	Unreportable*				
Hispanic	Unreportable*				
Asian	Unreportable*				
Other	Unreportable*				
Title I					
Migrant					
Identified LEP	Unreportable*				
Extended Sch Services	Unreportable*				
Gifted/Talented	0	0	13	87	100.00
F/R Lunch Approved	14	23	55	9	63.64
Vocational/2 Credits					
Disability	38	31	19	13	31.25
Alternate Assessment					

■ Novice
■ Apprentice
■ Proficient
■ Distinguished

Percentage may not sum to 100% due to rounding. 'Unreportable*' indicates subpopulations with fewer than 10 students or subpopulations where all students score at the same performance level.



2008-2009
INTERIM PERFORMANCE REPORT
MATHEMATICS CORE CONTENT

School: Garden Springs Elementary School
 District: Fayette County
 Code: 165037
 Grade: 03

	No. Items	No. Observations	SCHOOL								STATE								School -State Mean
			Percents						Mean	Std. Err.	Percents						Mean		
			B	0	1	2	3	4					No. Observations	B	0	1		2	3
OPEN RESPONSE																			
1.x.x - Number Prop Oper	5	279	0	19	33	24	13	11	1.7	0.1	125,243	0	21	35	26	10	8	1.5	0.2
2.x.x - Measurement	1	18	0	22	6	11	22	39	2.5	0.3	8,325	0	25	5	30	14	25	2.1	0.4
3.x.x - Geometry	2	35	0	6	20	31	14	29	2.4	0.2	16,777	0	8	24	35	13	20	2.1	0.3
4.x.x - Data Analysis & Probabilit	1	112	0	5	4	17	25	49	3.1	0.1	50,106	0	9	13	19	27	32	2.6	0.5
5.x.x - Algebraic Thinking	2	134	0	5	5	15	29	46	3.0	0.1	58,404	0	9	14	19	28	31	2.6	0.4
MULTIPLE CHOICE																			
1.x.x - Number Prop Oper	32	1,808	Correct	Incorrect	Omit/Mult				0.84	0.01	810,106	Correct	Incorrect	Omit/Mult				0.74	0.10
2.x.x - Measurement	7	413	84	16	0				0.89	0.02	183,647	74	26	0				0.81	0.08
3.x.x - Geometry	18	896	89	11	0				0.91	0.01	400,848	81	18	0				0.85	0.06
4.x.x - Data Analysis & Probabilit	8	426	91	9	0				0.82	0.02	192,126	85	15	0				0.69	0.13
5.x.x - Algebraic Thinking	11	489	82	18	0				0.83	0.02	217,089	69	31	0				0.78	0.05



2008-2009
INTERIM PERFORMANCE REPORT
MATHEMATICS CORE CONTENT

School: Garden Springs Elementary School
 District: Fayette County
 Code: 165037
 Grade: 04

	No. Items	No. Observations	SCHOOL								STATE								School -State Mean
			B	0	1	2	3	4	Mean	Std. Err.	No. Observations	B	0	1	2	3	4	Mean	
OPEN RESPONSE																			
1.x.x - Number Prop Oper	4	157	0	9	20	20	27	24	2.4	0.1	73,656	0	17	24	29	19	12	1.9	0.5
2.x.x - Measurement	1	21	0	5	14	14	33	33	2.8	0.3	8,195	0	43	13	10	20	13	1.5	1.3
3.x.x - Geometry	2	123	0	5	12	14	23	46	2.9	0.1	57,352	0	11	20	17	19	33	2.4	0.5
4.x.x - Data Analysis & Probabilit	1	21	0	5	10	33	38	14	2.5	0.2	8,152	0	5	36	29	23	6	1.9	0.6
5.x.x - Algebraic Thinking	2	123	0	5	23	25	30	17	2.3	0.1	57,508	0	5	27	32	25	11	2.1	0.2
MULTIPLE CHOICE																			
1.x.x - Number Prop Oper	31	1,429	73	27	0				0.73	0.01	664,194	67	33	0				0.67	0.06
2.x.x - Measurement	7	305	76	24	0				0.76	0.03	139,170	62	38	0				0.62	0.14
3.x.x - Geometry	14	596	86	14	0				0.86	0.02	278,460	77	23	0				0.77	0.09
4.x.x - Data Analysis & Probabilit	12	660	81	19	0				0.81	0.02	303,394	71	29	0				0.71	0.10
5.x.x - Algebraic Thinking	11	546	77	23	0				0.77	0.02	253,829	69	31	0				0.69	0.08



2008-2009
INTERIM PERFORMANCE REPORT
MATHEMATICS CORE CONTENT

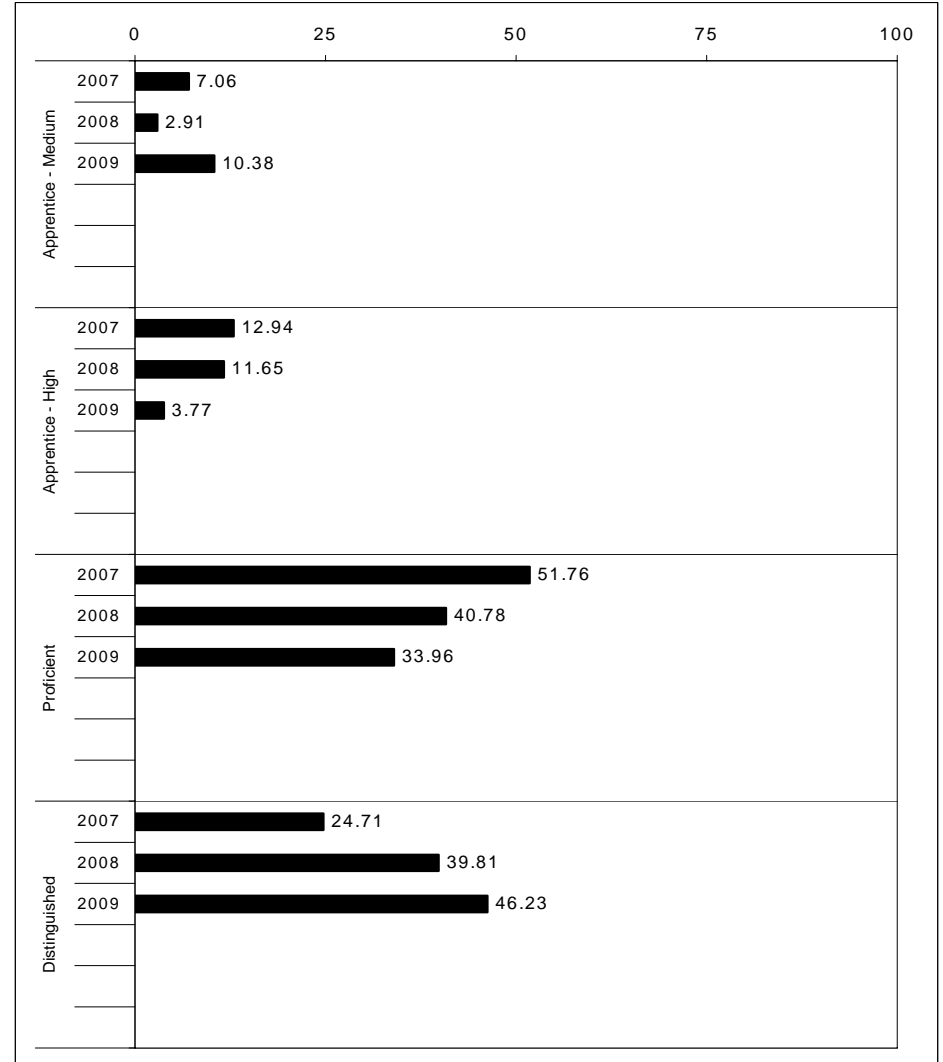
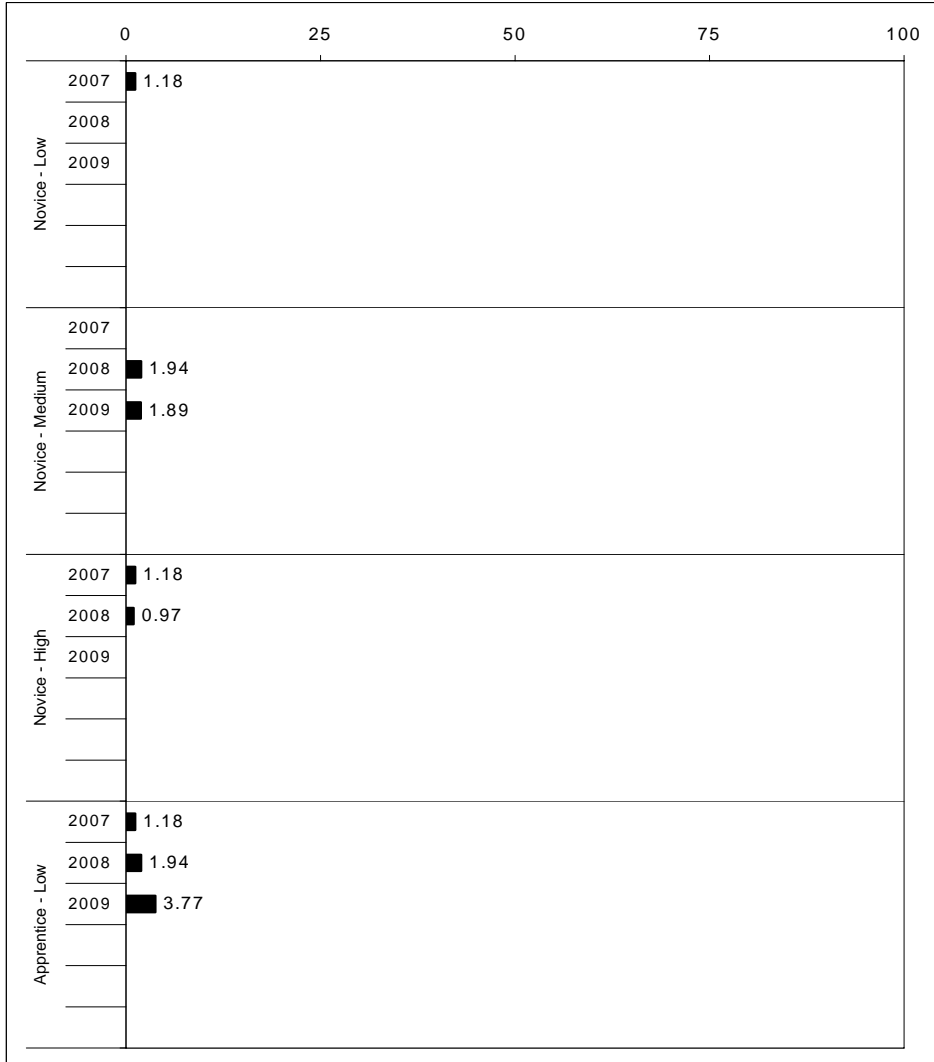
School: Garden Springs Elementary School
 District: Fayette County
 Code: 165037
 Grade: 05

	No. Items	No. Observations	SCHOOL								STATE								School -State Mean
			Percents						Mean	Std. Err.	Percents						Mean		
			B	0	1	2	3	4					No. Observations	B	0	1		2	3
OPEN RESPONSE																			
1.x.x - Number Prop Oper	4	150	0	5	15	13	21	47	2.9	0.1	73,199	0	8	20	18	25	29	2.5	0.4
2.x.x - Measurement	1	19	0	11	53	0	5	32	1.9	0.3	8,380	0	37	30	13	10	11	1.3	0.6
3.x.x - Geometry	2	119	0	4	18	29	33	16	2.4	0.1	56,900	0	6	24	30	26	14	2.2	0.2
4.x.x - Data Analysis & Probabilit	1	102	0	12	13	13	14	49	2.8	0.1	48,828	0	15	18	15	17	35	2.4	0.4
5.x.x - Algebraic Thinking	1	18	0	22	11	22	0	44	2.3	0.3	8,005	0	13	15	20	17	35	2.5	-0.2
MULTIPLE CHOICE																			
1.x.x - Number Prop Oper	29	1,345	Correct	Incorrect	Omit/Mult				0.67	0.01	643,144	Correct	Incorrect	Omit/Mult				0.63	0.04
2.x.x - Measurement	9	324	67	33	0				0.61	0.03	154,489	62	37	0				0.62	-0.01
3.x.x - Geometry	14	576	61	39	0				0.82	0.02	276,516	78	22	0				0.78	0.04
4.x.x - Data Analysis & Probabilit	11	527	82	18	0				0.73	0.02	252,212	64	36	0				0.64	0.09
5.x.x - Algebraic Thinking	10	510	73	27	0				0.72	0.02	244,140	65	35	0				0.65	0.07



2008-2009
INTERIM PERFORMANCE REPORT
SCIENCE TREND DATA
Performance Level Percents

School: Garden Springs Elementary School
 District: Fayette County
 Code: 165037
 Grade: 04

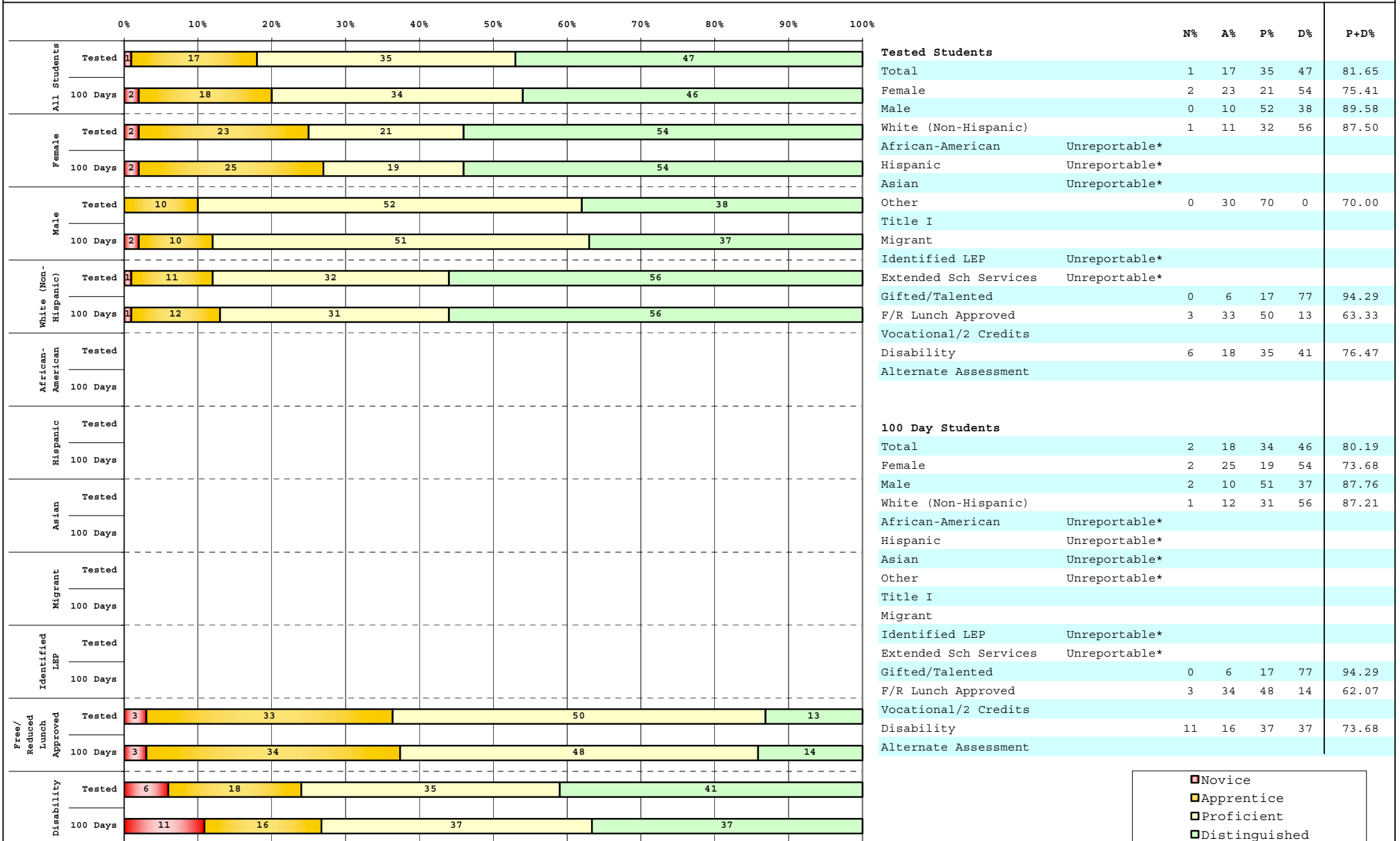


The horizontal bar represents the percent of students scoring at a performance level within a particular year. Percentages may not sum to 100% due to rounding.



**2008-2009
INTERIM PERFORMANCE REPORT
SCIENCE DISAGGREGATION
Performance Level Percents**

School: Garden Springs Elementary School
 District: Fayette County
 Code: 165037
 Grade: 04



Tested Students		N%	A%	P%	D%	P+D%
Total		1	17	35	47	81.65
Female		2	23	21	54	75.41
Male		0	10	52	38	89.58
White (Non-Hispanic)		1	11	32	56	87.50
African-American	Unreportable*					
Hispanic	Unreportable*					
Asian	Unreportable*					
Other		0	30	70	0	70.00
Title I						
Migrant						
Identified LEP	Unreportable*					
Extended Sch Services	Unreportable*					
Gifted/Talented		0	6	17	77	94.29
F/R Lunch Approved		3	33	50	13	63.33
Vocational/2 Credits						
Disability		6	18	35	41	76.47
Alternate Assessment						
100 Day Students						
Total		2	18	34	46	80.19
Female		2	25	19	54	73.68
Male		2	10	51	37	87.76
White (Non-Hispanic)		1	12	31	56	87.21
African-American	Unreportable*					
Hispanic	Unreportable*					
Asian	Unreportable*					
Other	Unreportable*					
Title I						
Migrant						
Identified LEP	Unreportable*					
Extended Sch Services	Unreportable*					
Gifted/Talented		0	6	17	77	94.29
F/R Lunch Approved		3	34	48	14	62.07
Vocational/2 Credits						
Disability		11	16	37	37	73.68
Alternate Assessment						

■ Novice
■ Apprentice
■ Proficient
■ Distinguished

Percentage may not sum to 100% due to rounding. 'Unreportable*' indicates subpopulations with fewer than 10 students or subpopulations where all students score at the same performance level.



2008-2009
INTERIM PERFORMANCE REPORT
SCIENCE CORE CONTENT

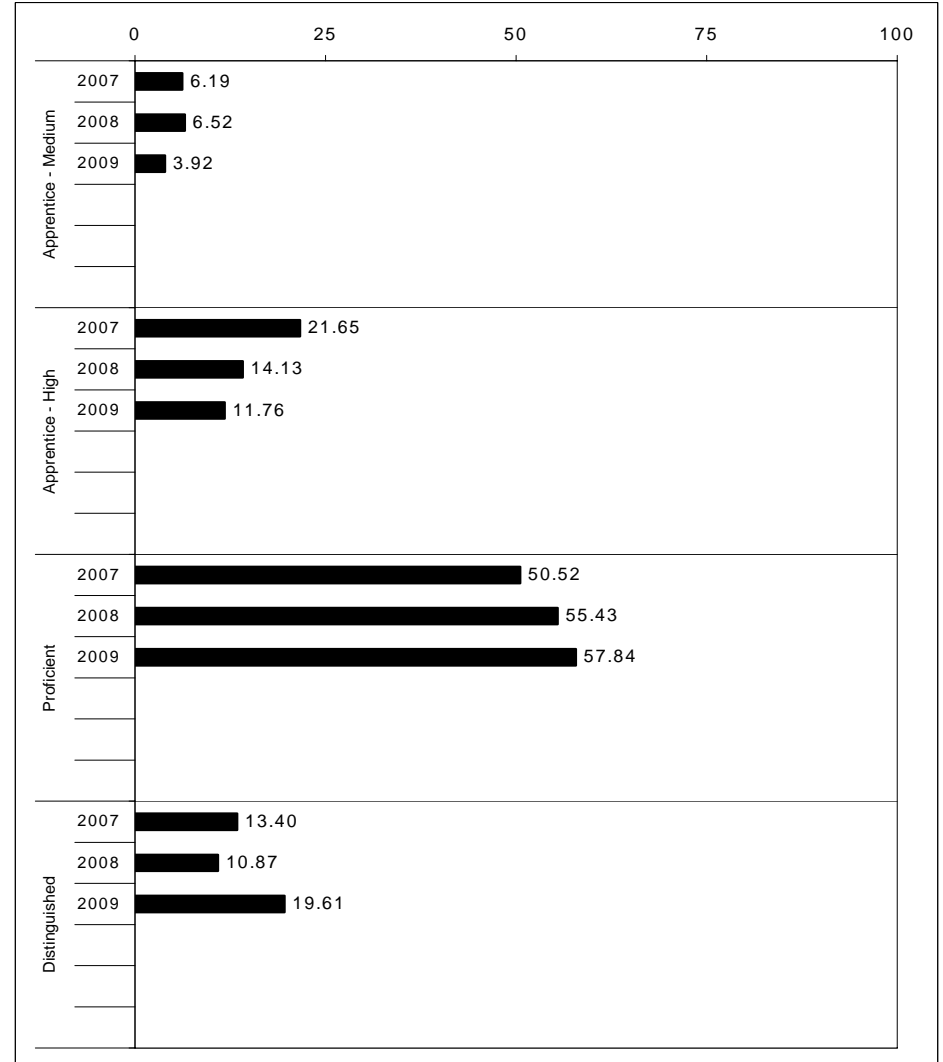
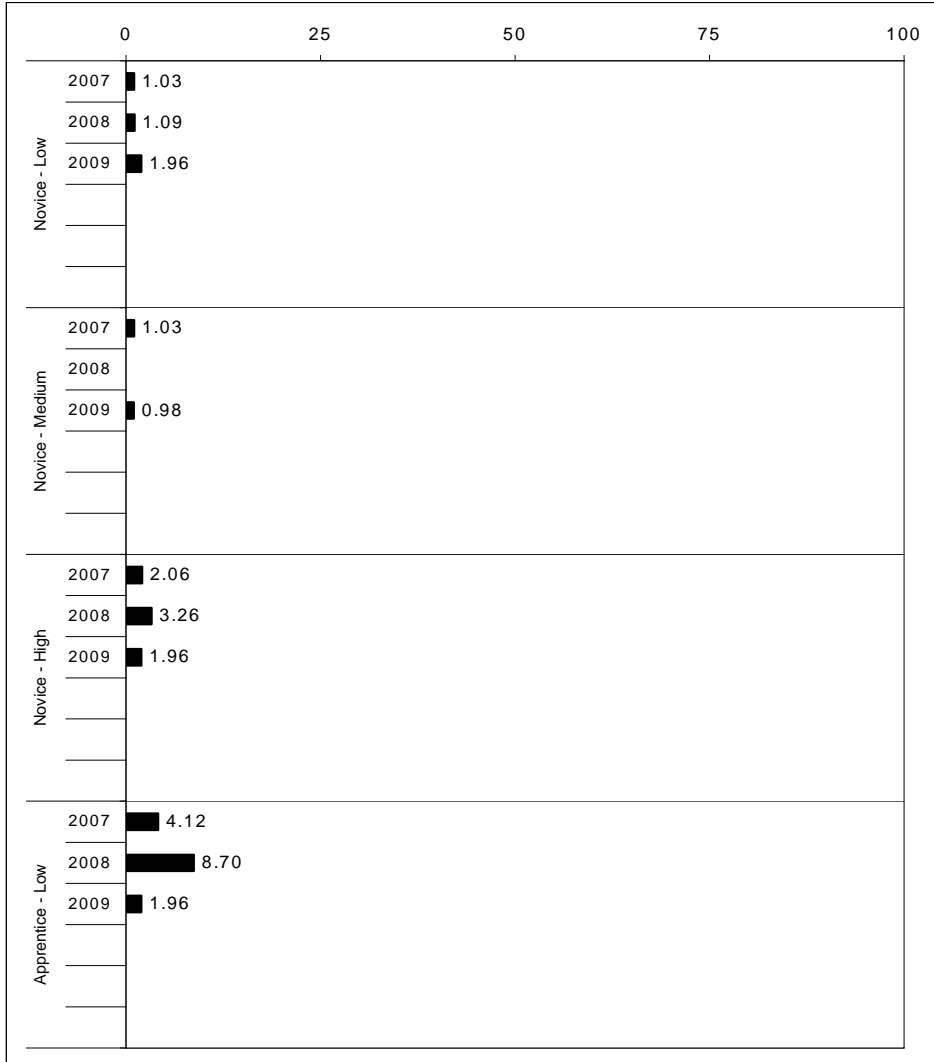
School: Garden Springs Elementary School
 District: Fayette County
 Code: 165037
 Grade: 04

	No. Items	No. Observations	SCHOOL								STATE								School -State Mean
			Percents						Mean	Std. Err.	Percents						Mean		
			B	0	1	2	3	4					No. Observations	B	0	1		2	3
OPEN RESPONSE																			
1.x.x - Physical Science	2	38	0	8	13	50	21	8	2.1	0.2	16,337	0	17	19	42	17	5	1.7	0.4
2.x.x - Earth Space Science	3	139	0	6	17	38	30	8	2.2	0.1	65,658	0	12	22	35	26	4	1.9	0.3
3.x.x - Biological Science	3	141	0	1	9	38	45	7	2.5	0.1	65,506	0	2	11	33	44	9	2.5	0.0
4.x.x - Unifying Concepts	2	123	0	1	9	24	44	22	2.8	0.1	57,508	0	3	13	33	35	15	2.5	0.3
MULTIPLE CHOICE																			
1.x.x - Physical Science	18	848	82	18	0				0.82	0.01	393,336	82	18	0				0.81	0.01
2.x.x - Earth Space Science	19	869	79	21	0				0.79	0.02	401,488	71	29	0				0.71	0.08
3.x.x - Biological Science	22	1,001	81	19	0				0.81	0.01	467,138	78	22	0				0.78	0.03
4.x.x - Unifying Concepts	14	695	91	9	0				0.91	0.01	319,534	84	15	0				0.84	0.07



2008-2009
INTERIM PERFORMANCE REPORT
SOCIAL STUDIES TREND DATA
Performance Level Percents

School: Garden Springs Elementary School
 District: Fayette County
 Code: 165037
 Grade: 05



The horizontal bar represents the percent of students scoring at a performance level within a particular year. Percentages may not sum to 100% due to rounding.



**2008-2009
INTERIM PERFORMANCE REPORT
SOCIAL STUDIES DISAGGREGATION
Performance Level Percents**

School: Garden Springs Elementary School
 District: Fayette County
 Code: 165037
 Grade: 05

		0%	10%	20%	30%	40%	50%	60%	70%	80%	90%	100%	N%	A%	P%	D%	P+D%		
All Students	Tested	5	17	59	20									Tested Students					
	100 Days	5	18	58	20									Total	5	17	59	20	78.43
Female	Tested	4	20	63	14									Female	4	20	63	14	76.47
	100 Days	4	22	61	14									Male	6	14	55	25	80.39
Male	Tested	6	14	55	25									White (Non-Hispanic)	5	14	59	22	80.72
	100 Days	6	14	55	25									African-American	Unreportable*				
White (Non-Hispanic)	Tested	5	14	59	22									Hispanic	Unreportable*				
	100 Days	5	15	59	22									Asian	Unreportable*				
African-American	Tested												Other	Unreportable*					
	100 Days												Title I						
Hispanic	Tested												Migrant						
	100 Days												Identified LEP	Unreportable*					
Asian	Tested												Extended Sch Services	Unreportable*					
	100 Days												Gifted/Talented	0	3	45	52	96.55	
Migrant	Tested												F/R Lunch Approved	19	24	57	0	57.14	
	100 Days												Vocational/2 Credits						
Identified LEP	Tested												Disability	31	38	19	13	31.25	
	100 Days												Alternate Assessment						
Free/Reduced Lunch Approved	Tested	19	24	57										100 Day Students					
	100 Days	18	23	59										Total	5	18	58	20	77.45
Disability	Tested	31	38	19	13									Female	4	22	61	14	74.51
	100 Days	31	38	19	13									Male	6	14	55	25	80.39

■	Novice
■	Apprentice
■	Proficient
■	Distinguished

Percentage may not sum to 100% due to rounding. 'Unreportable*' indicates subpopulations with fewer than 10 students or subpopulations where all students score at the same performance level.



2008-2009
INTERIM PERFORMANCE REPORT
SOCIAL STUDIES CORE CONTENT

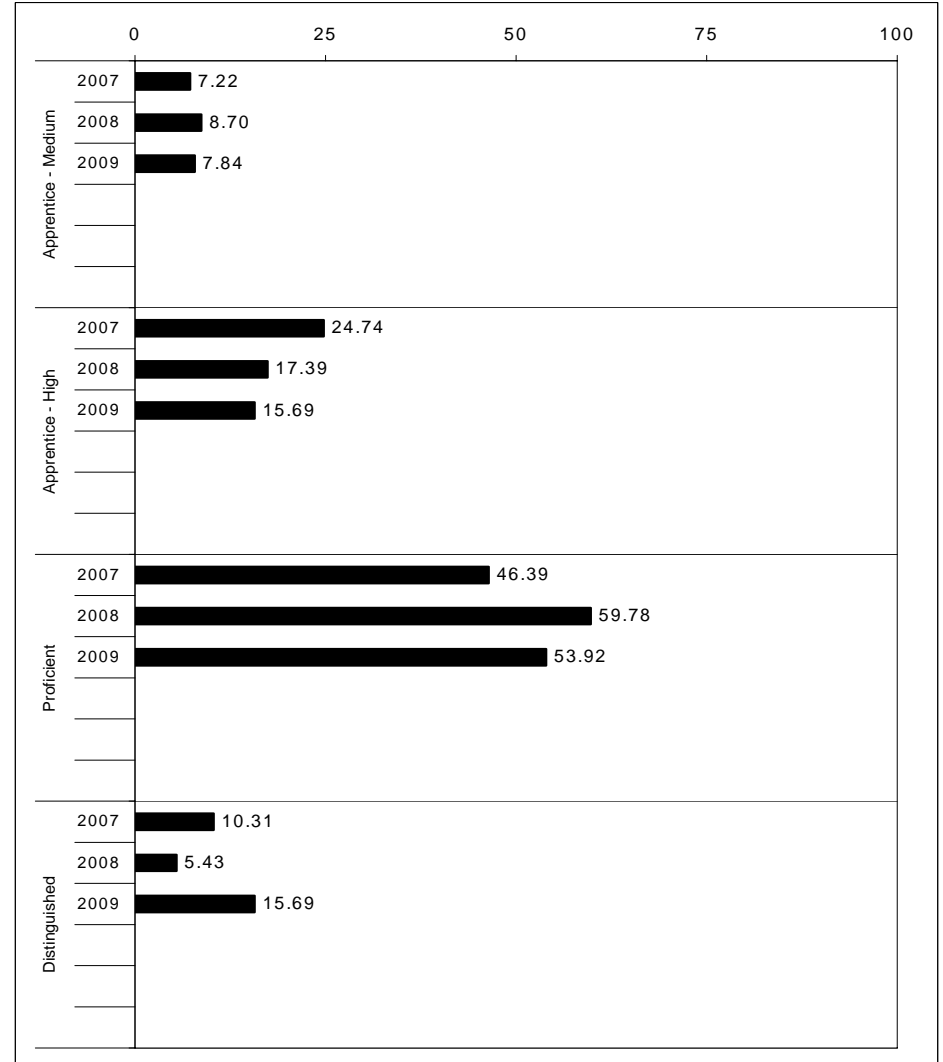
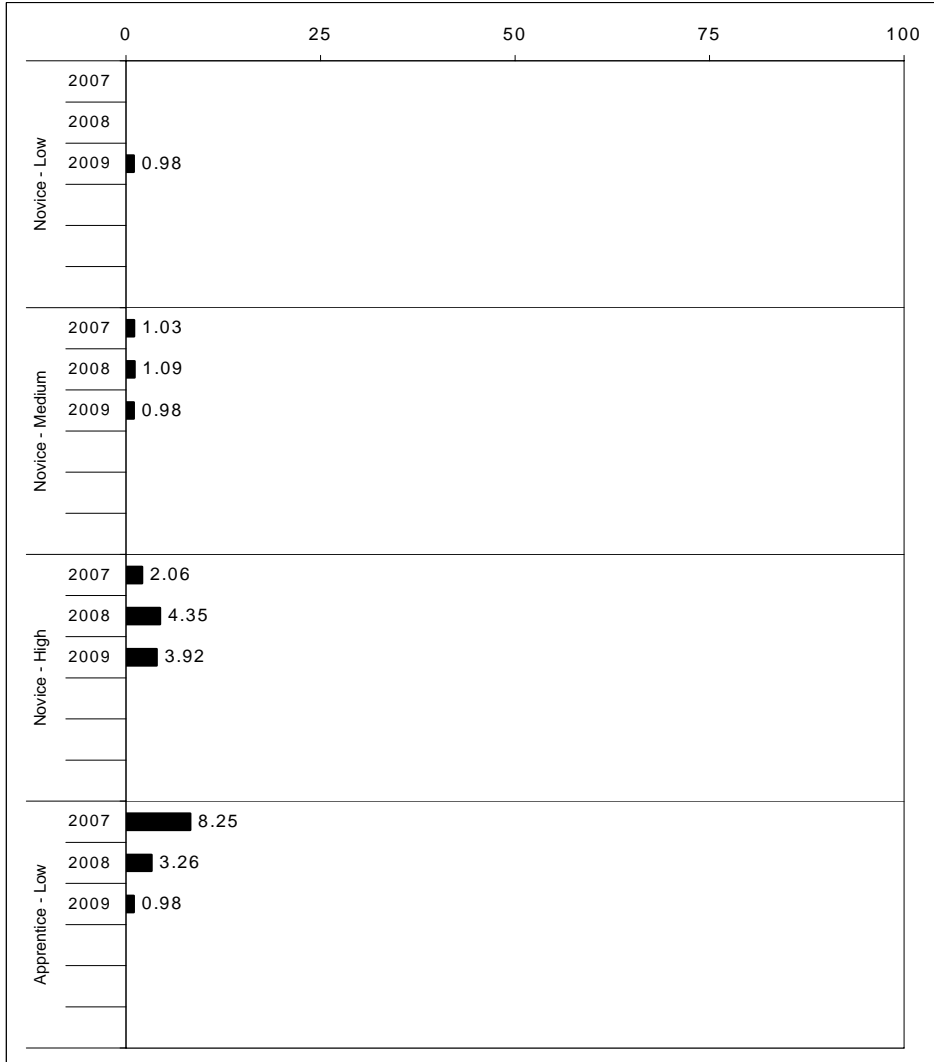
School: Garden Springs Elementary School
 District: Fayette County
 Code: 165037
 Grade: 05

	No. Items	No. Observations	SCHOOL								STATE								School -State Mean
			B	0	1	2	3	4	Mean	Std. Err.	No. Observations	B	0	1	2	3	4	Mean	
OPEN RESPONSE																			
1.x.x - Government & Civics	2	118	0	4	36	47	10	3	1.7	0.1	56,903	0	5	37	45	10	2	1.7	0.0
2.x.x - Cultures & Societies	1	16	0	6	13	56	19	6	2.1	0.2	8,151	0	4	21	56	15	4	1.9	0.2
3.x.x - Economics	1	102	0	7	22	57	9	6	1.9	0.1	48,828	0	11	33	41	12	3	1.6	0.3
4.x.x - Geography	2	35	0	6	34	40	17	3	1.8	0.2	16,077	0	9	32	39	17	3	1.7	0.1
5.x.x - Historical Perspective	3	137	0	6	32	47	12	2	1.7	0.1	65,353	0	7	35	46	10	2	1.7	0.0
MULTIPLE CHOICE																			
1.x.x - Government & Civics	14	664	73	27	0			0.73	0.02	317,571	66	34	0			0.66	0.07		
2.x.x - Cultures & Societies	11	443	77	23	0			0.77	0.02	211,383	70	30	0			0.69	0.08		
3.x.x - Economics	11	526	78	22	0			0.78	0.02	252,215	73	27	0			0.73	0.05		
4.x.x - Geography	16	785	67	33	0			0.67	0.02	374,337	66	34	0			0.66	0.01		
5.x.x - Historical Perspective	27	1,222	76	24	0			0.76	0.01	586,076	69	31	0			0.69	0.07		



2008-2009
INTERIM PERFORMANCE REPORT
WRITING ON-DEMAND TREND DATA
Performance Level Percents

School: Garden Springs Elementary School
 District: Fayette County
 Code: 165037
 Grade: 05



The horizontal bar represents the percent of students scoring at a performance level within a particular year. Percentages may not sum to 100% due to rounding.



2008-2009
INTERIM PERFORMANCE REPORT
WRITING ON-DEMAND DISAGGREGATION
Performance Level Percents

School: Garden Springs Elementary School
 District: Fayette County
 Code: 165037
 Grade: 05

		0%	10%	20%	30%	40%	50%	60%	70%	80%	90%	100%	N%	A%	P%	D%	P+D%						
All Students	Tested	6	25	53	17													Tested Students					
	100 Days	6	25	54	16													Total	6	25	53	17	69.61
Female	Tested	2	20	59	20													Female	2	20	59	20	78.43
	100 Days	2	22	59	18													Male	10	29	47	14	60.78
Male	Tested	10	29	47	14													White (Non-Hispanic)	6	25	51	18	68.67
	100 Days	10	27	49	14													African-American	Unreportable*				
White (Non-Hispanic)	Tested	6	25	51	18													Hispanic	Unreportable*				
	100 Days	6	24	52	17													Asian	Unreportable*				
African-American	Tested													Other	Unreportable*								
	100 Days													Title I									
Hispanic	Tested													Migrant									
	100 Days													Identified LEP	Unreportable*								
Asian	Tested													Extended Sch Services	Unreportable*								
	100 Days													Gifted/Talented	0	7	52	41	93.10				
Migrant	Tested													F/R Lunch Approved	24	24	43	10	52.38				
	100 Days													Vocational/2 Credits									
Identified LEP	Tested													Disability	31	50	19	0	18.75				
	100 Days													Alternate Assessment									
Free/Reduced Lunch Approved	Tested	24	24	43	10													100 Day Students					
	100 Days	23	23	45	9													Total	6	25	54	16	69.61
Disability	Tested	31	50	19													Female	2	22	59	18	76.47	
	100 Days	31	50	19													Male	10	27	49	14	62.75	

■	Novice
■	Apprentice
■	Proficient
■	Distinguished

Percentage may not sum to 100% due to rounding. 'Unreportable*' indicates subpopulations with fewer than 10 students or subpopulations where all students score at the same performance level.



2008-2009
INTERIM PERFORMANCE REPORT
WRITING ON-DEMAND CORE CONTENT

School: Garden Springs Elementary School
 District: Fayette County
 Code: 165037
 Grade: 05

WRITING PROMPT	SCHOOL												STATE												School
	No. Observations	Percents											Mean	Percents											Mean
		B	0	1	2	3	4	5	6	7	8		B	0	1	2	3	4	5	6	7	8			
Inform																									
1.X.X - Content	33	0	3	0	6	12	33	18	27	0	0	4.36	0	1	1	9	9	34	18	21	4	2	4.43	-0.07	
2.X.X - Structure	33	0	3	0	3	3	48	24	18	0	0	4.39	0	1	2	9	10	35	19	19	3	1	4.33	0.06	
3.X.X - Convention	33	0	3	0	6	0	55	18	18	0	0	4.30	0	0	0	12	11	34	19	19	3	1	4.38	-0.08	
Narrate for a purpose																									
1.X.X - Content	37	0	0	0	5	8	32	8	41	5	0	4.86	0	1	1	10	9	36	18	21	3	1	4.35	0.51	
2.X.X - Structure	37	0	0	0	5	11	27	16	35	5	0	4.81	0	1	2	10	10	37	17	19	3	1	4.27	0.54	
3.X.X - Convention	37	0	0	0	5	11	27	19	32	5	0	4.78	0	0	0	12	10	36	18	19	3	1	4.33	0.45	
Persuade																									
1.X.X - Content	32	0	0	0	3	0	34	25	34	3	0	4.97	0	1	1	8	8	33	19	21	5	3	4.50	0.47	
2.X.X - Structure	32	0	0	0	3	3	25	31	34	3	0	5.00	0	2	2	9	10	33	19	20	5	2	4.42	0.58	
3.X.X - Convention	32	0	0	0	3	0	31	28	34	3	0	5.00	0	0	0	11	10	32	19	20	5	2	4.50	0.50	

MULTIPLE CHOICE	No. Items	SCHOOL						STATE						School
		No. Observations	Percents			Mean	Std. Err.	No. Observations	Percents			Mean	-State Mean	
			Correct	Incorrect	Omit/Mult				Correct	Incorrect	Omit/Mult			
4.x.x - Writing Process	52	1,224	78	22	0	0.78	0.01	585,936	73	27	0	0.73	0.05	
4.10.x - Revising	16	272	72	28	0	0.72	0.03	130,317	66	34	0	0.66	0.06	
4.11.x - Editing	36	952	80	20	0	0.80	0.01	455,619	75	24	0	0.75	0.05	