



Interim Performance Report

In March 2009, the Kentucky General Assembly passed Senate Bill 1 (SB1) that was subsequently signed into law by the Governor. SB1 calls for a significant overhaul of the state's assessment and accountability system. The new assessment system begins in the spring of 2012. The school years of 2008-2009, 2009-2010 and 2010-2011 are described in SB1 as an interim period. This three-year period allows Kentucky to develop the new assessment system and to carry on state and federal testing requirements.

The Interim Performance Report includes the Kentucky Core Content Test (KCCT) in Reading (grades 3-8 and 10), Mathematics (grades 3-8 and 11), Science (grades 4, 7 and 11), Social Studies (grades 5, 8 and 11) and Writing On-Demand (grades 5, 8 and 12). The KCCT is based on the Kentucky Core Content for Assessment (Version 4.1) and contains multiple choice and open response questions. The Writing On-Demand test uses writing prompts that require students to craft a piece of writing in a 60 minute period.

The KCCT is developed under the direction of content advisory committees of Kentucky educators who draft, review and select test questions. All test items are reviewed by a bias review committee to enhance the fairness of items for all Kentucky students.

The KCCT continues to fulfill the requirements of the federal statute known as the No Child Left Behind Act of 2001. A separate accountability report for No Child Left Behind (NCLB) is published by the Kentucky Department of Education.

The Interim Performance Report focuses entirely on the five state-required content areas and provides data for schools or districts. The data in this report is not used directly for state accountability; although, these results can fulfill the requirements of Senate Bill 168 from 2002 and may be used by schools or districts for their own local accountability needs.

Performance standards are based on descriptions of Novice, Apprentice, Proficient and Distinguished (NAPD) student performance levels specific to the content area and grade being assessed. The performance standards, in conjunction with Kentucky's Core Content for Assessment, should allow instruction to better focus on the content area to be taught and on how well students must demonstrate achievement in each content area.

Reporting Changes for 2009

Based on SB1, Kentucky will not be reporting state accountability and academic indices as in the past. The report does have several familiar pages with performance level (NAPD) trend, core content and disaggregation data per content area. Districts and schools will still see distributions of how students scored in the Novice (with sublevels), Apprentice (with sublevels), Proficient and Distinguished performance levels.

Confidentiality Changes

Due to federal regulations around the Family Education Rights and Privacy Act (FERPA), the numbers of students have been removed. Though there is a need to report as much data as possible, there is also a paramount need to maintain the confidential aspects of individual scores. When scores are reported in what is commonly called "small cells" where very few students may be categorized, there is the possibility of revealing individual scores when numbers are reported. Numbers are reported to each district in a confidential report that accompanies the public Interim Performance Report.

**2008-2009
INTERIM PERFORMANCE REPORT**

School: Dixie Elementary Magnet School
District: Fayette County
Code: 165036
Grade: PRIMARY-05

CONTENTS OF THIS REPORT

Introduction	1
Academic Trend Data	
Reading Results	2-8
Mathematics Results	9-15
Science Results	16-18
Social Studies Results	19-21
Writing Results	22-24

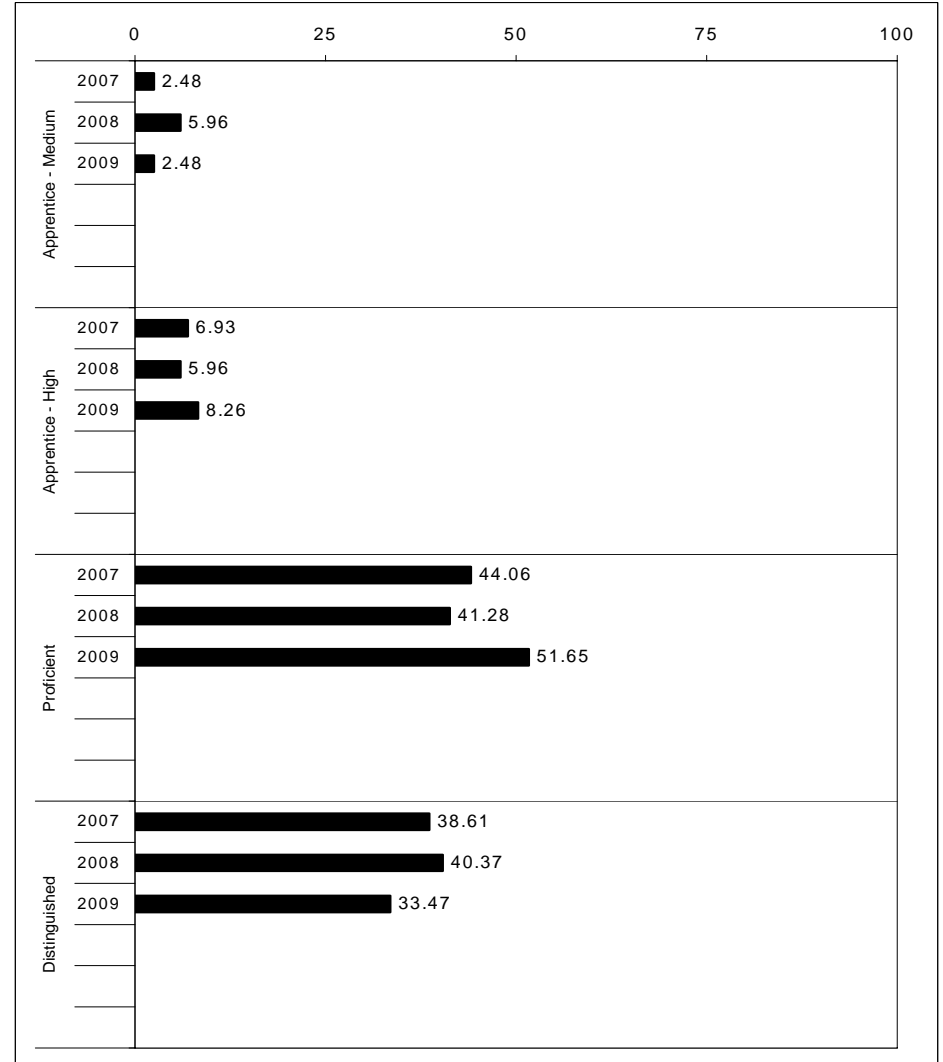
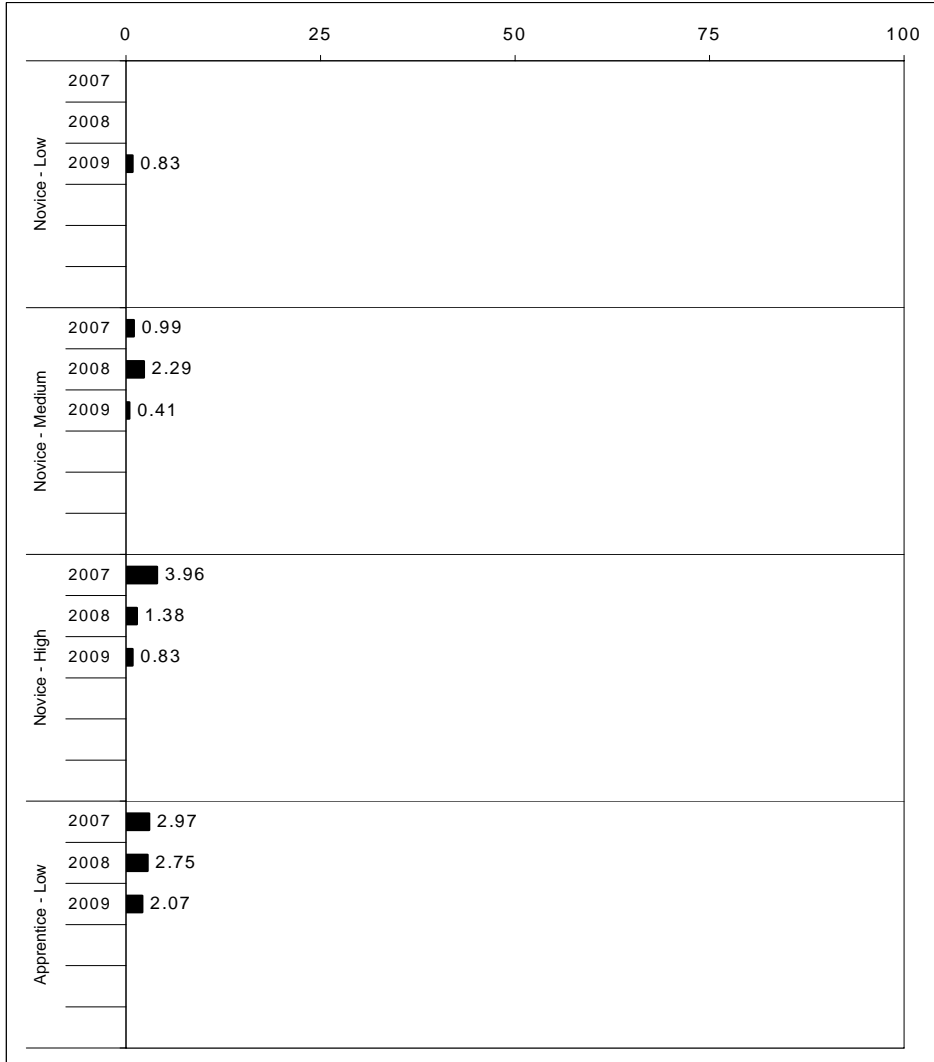
For more information, refer to the 2009 Interim Assessment Interpretative Guide on the Kentucky Department of Education Web site (www.education.ky.gov).





2008-2009
INTERIM PERFORMANCE REPORT
READING TREND DATA
Performance Level Percents

School: Dixie Elementary Magnet School
 District: Fayette County
 Code: 165036
 Grade: ELEMENTARY



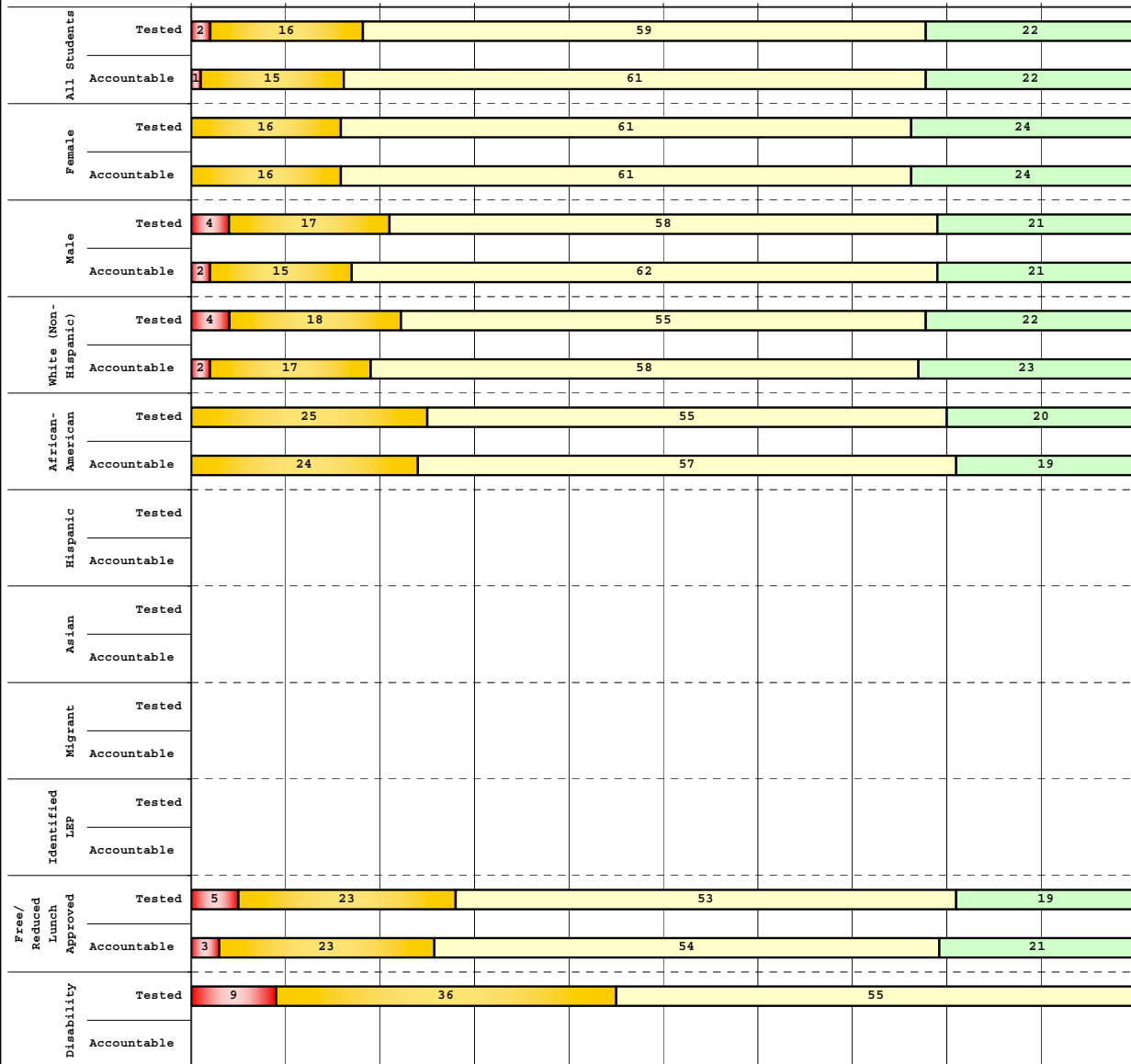
The horizontal bar represents the percent of students scoring at a performance level within a particular year. Percentages may not sum to 100% due to rounding.



**2008-2009
INTERIM PERFORMANCE REPORT
READING DISAGGREGATION
Performance Level Percents**

School: Dixie Elementary Magnet School
District: Fayette County
Code: 165036
Grade: 03

0% 10% 20% 30% 40% 50% 60% 70% 80% 90% 100%

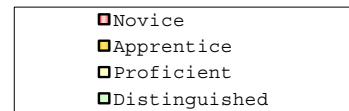


Tested Students

	N%	A%	P%	D%	P+D%
Total	2	16	59	22	81.40
Female	0	16	61	24	84.21
Male	4	17	58	21	79.17
White (Non-Hispanic)	4	18	55	22	77.55
African-American	0	25	55	20	75.00
Hispanic	Unreportable*				
Asian	Unreportable*				
Other	Unreportable*				
Title I	2	16	59	22	81.40
Migrant	Unreportable*				
Identified LEP	Unreportable*				
Extended Sch Services	7	29	64	0	64.29
Gifted/Talented	0	0	39	61	100.00
F/R Lunch Approved	5	23	53	19	72.09
Vocational/2 Credits	Unreportable*				
Disability	9	36	55	0	54.55
Alternate Assessment	Unreportable*				

NCLB Accountable Students

	N%	A%	P%	D%	P+D%
Total	1	15	61	22	83.53
Female	0	16	61	24	84.21
Male	2	15	62	21	82.98
White (Non-Hispanic)	2	17	58	23	81.25
African-American	0	24	57	19	76.19
Hispanic	Unreportable*				
Asian	Unreportable*				
Other	Unreportable*				
Title I	1	15	61	22	83.53
Migrant	Unreportable*				
Identified LEP	Unreportable*				
Extended Sch Services	4	30	67	0	66.67
Gifted/Talented	0	0	39	61	100.00
F/R Lunch Approved	3	23	54	21	74.36
Vocational/2 Credits	Unreportable*				
Disability	Unreportable*				
Alternate Assessment	Unreportable*				



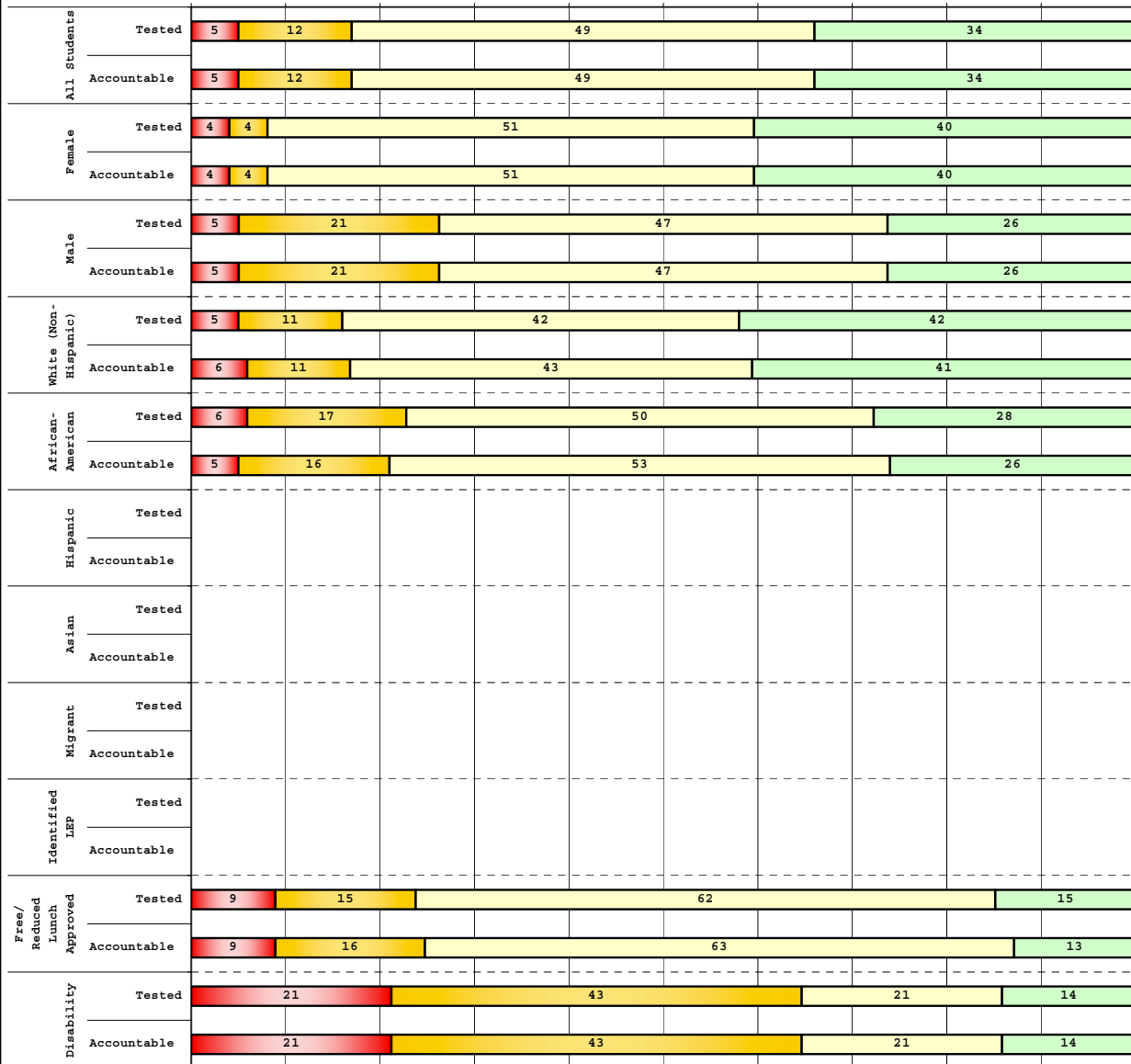
Percentage may not sum to 100% due to rounding. 'Unreportable*' indicates subpopulations with fewer than 10 students or subpopulations where all students score at the same performance level.



**2008-2009
INTERIM PERFORMANCE REPORT
READING DISAGGREGATION
Performance Level Percents**

School: Dixie Elementary Magnet School
District: Fayette County
Code: 165036
Grade: 04

0% 10% 20% 30% 40% 50% 60% 70% 80% 90% 100%

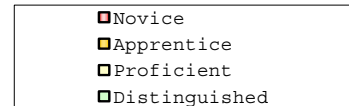


Tested Students

	N%	A%	P%	D%	P+D%
Total	5	12	49	34	83.53
Female	4	4	51	40	91.49
Male	5	21	47	26	73.68
White (Non-Hispanic)	5	11	42	42	83.64
African-American	6	17	50	28	77.78
Hispanic	Unreportable*				
Asian	Unreportable*				
Other	Unreportable*				
Title I	5	12	49	34	83.53
Migrant	Unreportable*				
Identified LEP	Unreportable*				
Extended Sch Services	0	50	39	11	50.00
Gifted/Talented	0	0	17	83	100.00
F/R Lunch Approved	9	15	62	15	76.47
Vocational/2 Credits					
Disability	21	43	21	14	35.71
Alternate Assessment	Unreportable*				

NCLB Accountable Students

	N%	A%	P%	D%	P+D%
Total	5	12	49	34	83.13
Female	4	4	51	40	91.11
Male	5	21	47	26	73.68
White (Non-Hispanic)	6	11	43	41	83.33
African-American	5	16	53	26	78.95
Hispanic	Unreportable*				
Asian	Unreportable*				
Other	Unreportable*				
Title I	5	12	49	34	83.13
Migrant	Unreportable*				
Identified LEP	Unreportable*				
Extended Sch Services	0	53	41	6	47.06
Gifted/Talented	0	0	17	83	100.00
F/R Lunch Approved	9	16	63	13	75.00
Vocational/2 Credits					
Disability	21	43	21	14	35.71
Alternate Assessment	Unreportable*				



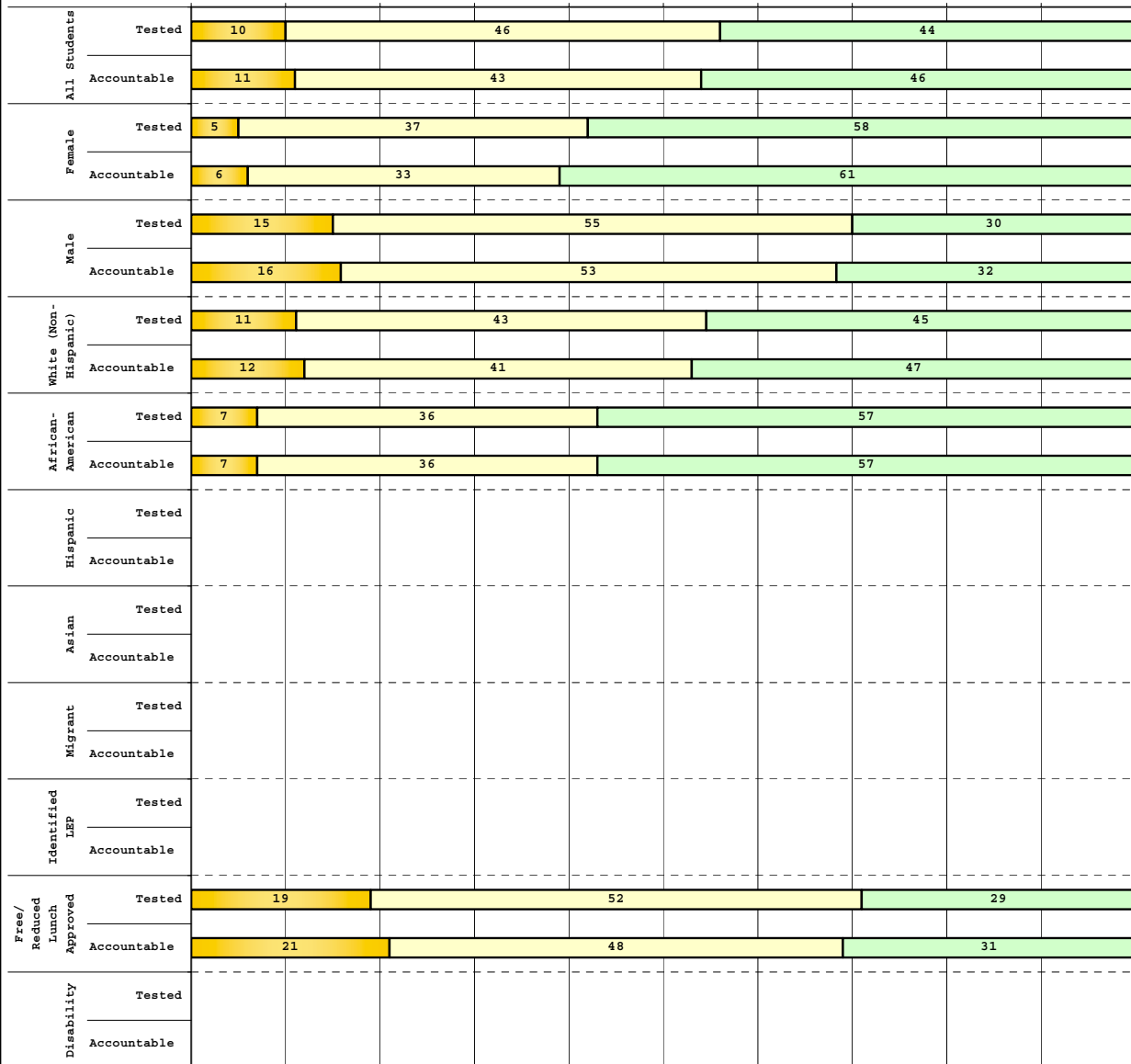
Percentage may not sum to 100% due to rounding. 'Unreportable*' indicates subpopulations with fewer than 10 students or subpopulations where all students score at the same performance level.



**2008-2009
INTERIM PERFORMANCE REPORT
READING DISAGGREGATION
Performance Level Percents**

School: Dixie Elementary Magnet School
District: Fayette County
Code: 165036
Grade: 05

0% 10% 20% 30% 40% 50% 60% 70% 80% 90% 100%



Tested Students

	N%	A%	P%	D%	P+D%
Total	0	10	46	44	89.74
Female	0	5	37	58	94.74
Male	0	15	55	30	85.00
White (Non-Hispanic)	0	11	43	45	88.68
African-American	0	7	36	57	92.86
Hispanic	Unreportable*				
Asian	Unreportable*				
Other	Unreportable*				
Title I	0	10	46	44	89.74
Migrant	Unreportable*				
Identified LEP	Unreportable*				
Extended Sch Services	0	25	69	6	75.00
Gifted/Talented	0	0	21	79	100.00
F/R Lunch Approved	0	19	52	29	80.65
Vocational/2 Credits	Unreportable*				
Disability	Unreportable*				
Alternate Assessment	Unreportable*				
NCLB Accountable Students					
Total	0	11	43	46	89.19
Female	0	6	33	61	94.44
Male	0	16	53	32	84.21
White (Non-Hispanic)	0	12	41	47	88.24
African-American	0	7	36	57	92.86
Hispanic	Unreportable*				
Asian	Unreportable*				
Other	Unreportable*				
Title I	0	11	43	46	89.19
Migrant	Unreportable*				
Identified LEP	Unreportable*				
Extended Sch Services	0	25	69	6	75.00
Gifted/Talented	0	0	21	79	100.00
F/R Lunch Approved	0	21	48	31	79.31
Vocational/2 Credits	Unreportable*				
Disability	Unreportable*				
Alternate Assessment	Unreportable*				

■ Novice
■ Apprentice
■ Proficient
■ Distinguished

Percentage may not sum to 100% due to rounding. 'Unreportable*' indicates subpopulations with fewer than 10 students or subpopulations where all students score at the same performance level.



2008-2009
INTERIM PERFORMANCE REPORT
READING CORE CONTENT

School: Dixie Elementary Magnet School
 District: Fayette County
 Code: 165036
 Grade: 03

	No. Items	No. Observations	SCHOOL								Std. Err.	No. Observations	STATE								School -State Mean
			B	0	1	2	3	4	Mean	B			0	1	2	3	4	Mean			
OPEN RESPONSE																					
2.0.x - Developing Understanding	2	170	0	1	26	52	19	2	1.9	0.1	100,212	0	10	30	44	14	2	1.7	0.2		
3.0.x - Interpreting Text	2	170	0	1	26	52	19	2	1.9	0.1	100,212	0	10	30	44	14	2	1.7	0.2		
MULTIPLE CHOICE																					
1.0.x - Forming a Foundation	32	664	88	12	0				0.88	0.01	392,589	83	17	0				0.83	0.05		
2.0.x - Developing Understanding	89	1,686	82	18	0				0.82	0.01	993,477	80	20	0				0.80	0.02		
3.0.x - Interpreting Text	31	803	80	21	0				0.79	0.01	468,115	77	23	0				0.77	0.02		
5.0.x - Critical Stance	15	343	83	18	0				0.83	0.02	208,359	79	21	0				0.79	0.04		



**2008-2009
INTERIM PERFORMANCE REPORT
READING CORE CONTENT**

School: Dixie Elementary Magnet School
 District: Fayette County
 Code: 165036
 Grade: 04

	No. Items	No. Observations	SCHOOL							Mean	Std. Err.	No. Observations	STATE							Mean	School -State Mean
			B	0	1	2	3	4	B				0	1	2	3	4				
OPEN RESPONSE																					
2.0.x - Developing Understanding	5	139	0	3	14	47	27	9	2.3	0.1	81,849	0	3	24	52	18	3	1.9	0.4		
3.0.x - Interpreting Text	6	214	0	3	13	39	38	8	2.4	0.1	131,199	0	4	22	45	23	5	2.0	0.4		
MULTIPLE CHOICE																					
1.0.x - Forming a Foundation	34	671	73	27	0				0.73	0.02	401,452	72	28	0				0.71	0.02		
2.0.x - Developing Understanding	76	1,445	76	24	0				0.76	0.01	868,422	73	27	0				0.73	0.03		
3.0.x - Interpreting Text	29	468	80	20	0				0.80	0.02	278,648	79	21	0				0.79	0.01		
5.0.x - Critical Stance	9	259	78	22	0				0.78	0.03	155,704	74	26	0				0.74	0.04		



**2008-2009
INTERIM PERFORMANCE REPORT
READING CORE CONTENT**

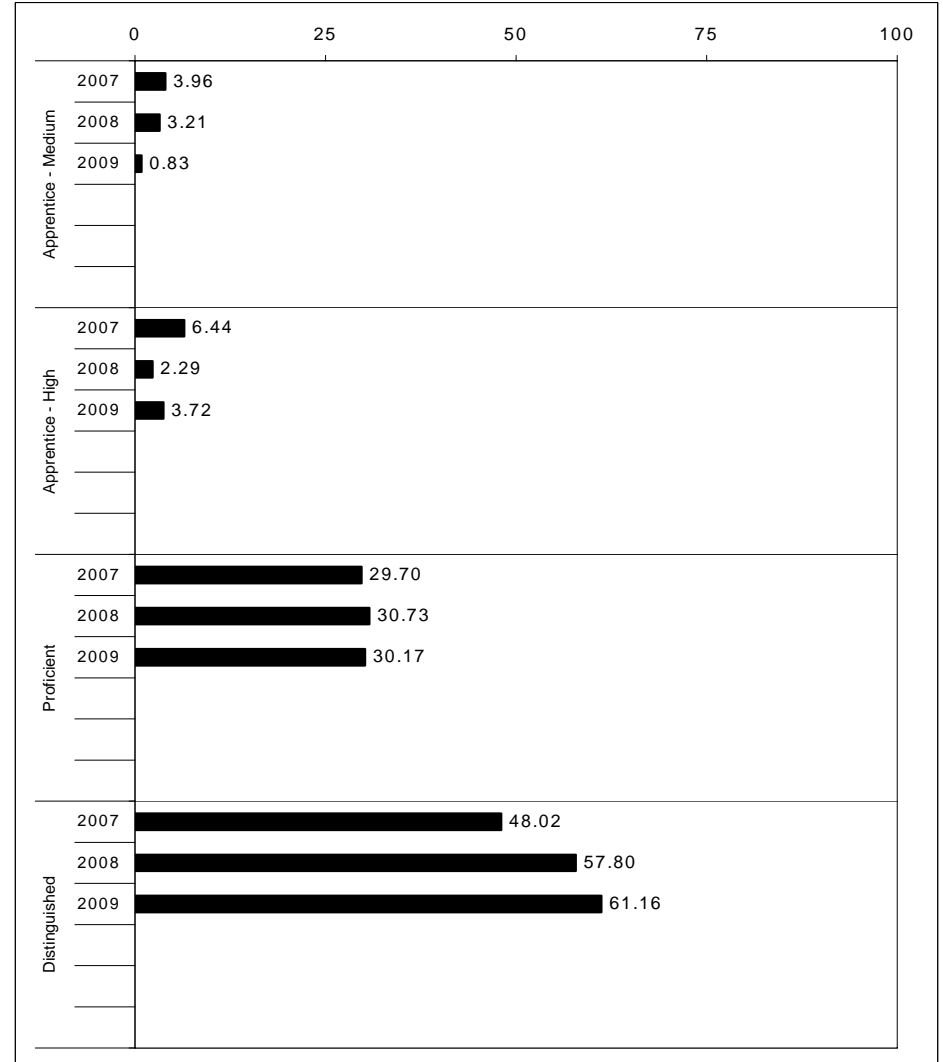
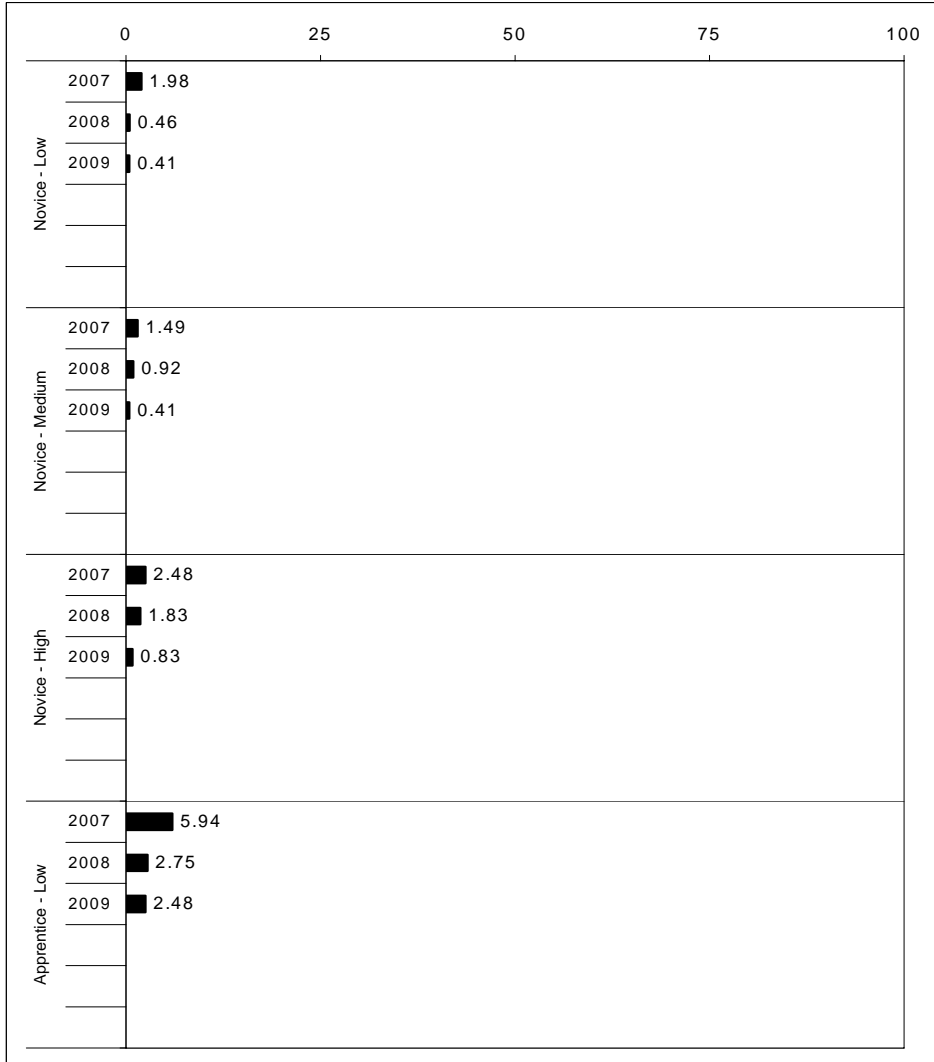
School: Dixie Elementary Magnet School
 District: Fayette County
 Code: 165036
 Grade: 05

	No. Items	No. Observations	SCHOOL								Mean	Std. Err.	No. Observations	STATE						Mean	School -State Mean
			B	0	1	2	3	4	B	0				1	2	3	4				
OPEN RESPONSE																					
2.0.x - Developing Understanding	6	137	0	2	6	33	33	26	2.8	0.1	89,507	0	5	23	48	20	5	2.0	0.8		
3.0.x - Interpreting Text	6	195	0	2	9	39	30	20	2.6	0.1	130,403	0	5	21	50	19	4	2.0	0.6		
MULTIPLE CHOICE																					
1.0.x - Forming a Foundation	28	405	82	18	0				0.82	0.02	268,187	74	26	0				0.74	0.08		
2.0.x - Developing Understanding	71	1,237	85	15	0				0.85	0.01	823,068	80	20	0				0.80	0.05		
3.0.x - Interpreting Text	27	524	84	16	0				0.84	0.02	341,653	81	19	0				0.81	0.03		
5.0.x - Critical Stance	17	460	87	13	0				0.87	0.02	300,671	75	25	0				0.75	0.12		



2008-2009
INTERIM PERFORMANCE REPORT
MATHEMATICS TREND DATA
Performance Level Percents

School: Dixie Elementary Magnet School
 District: Fayette County
 Code: 165036
 Grade: ELEMENTARY



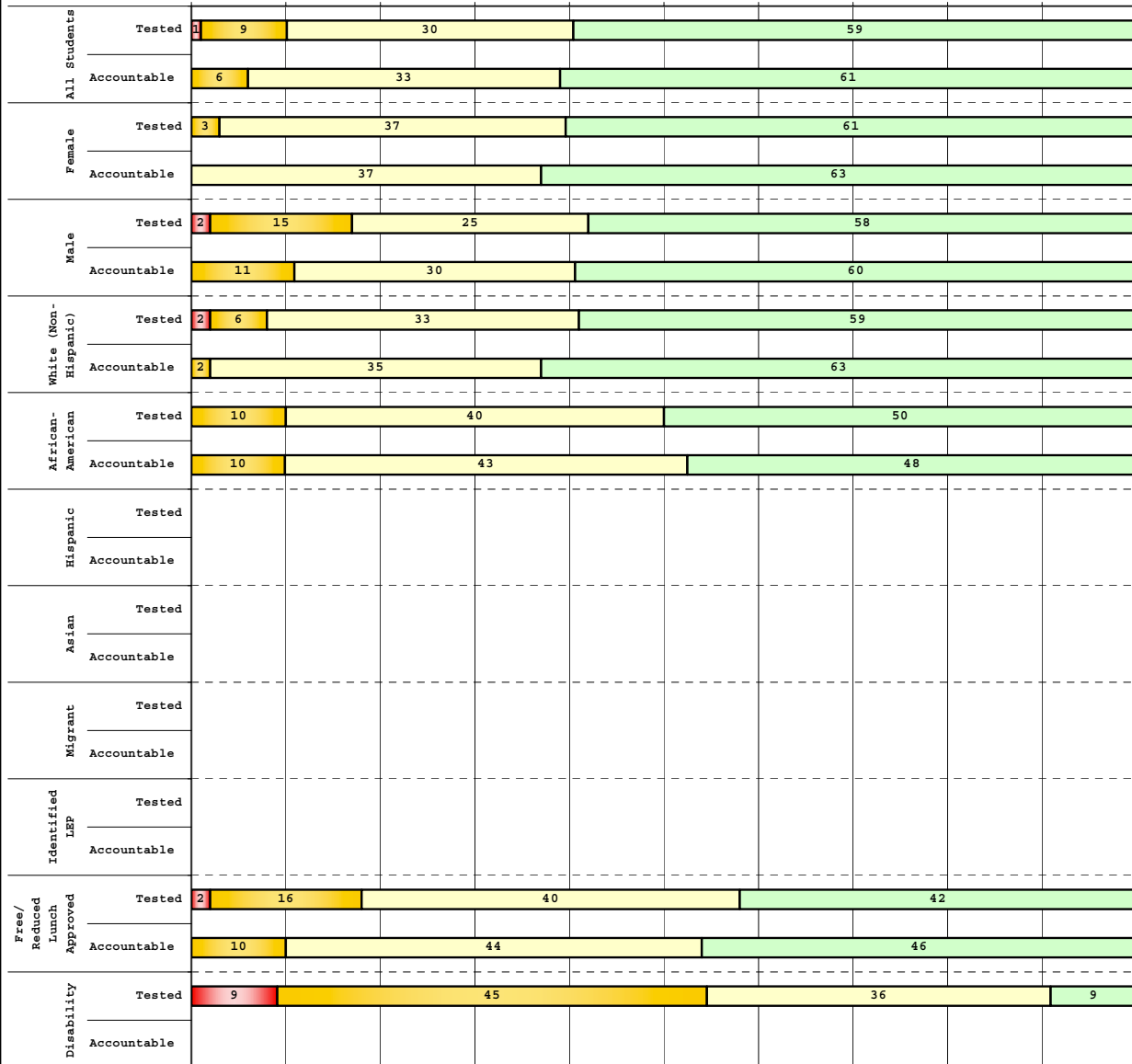
The horizontal bar represents the percent of students scoring at a performance level within a particular year. Percentages may not sum to 100% due to rounding.



2008-2009
INTERIM PERFORMANCE REPORT
MATHEMATICS DISAGGREGATION
Performance Level Percents

School: Dixie Elementary Magnet School
 District: Fayette County
 Code: 165036
 Grade: 03

0% 10% 20% 30% 40% 50% 60% 70% 80% 90% 100%



	N%	A%	P%	D%	P+D%
Tested Students					
Total	1	9	30	59	89.53
Female	0	3	37	61	97.37
Male	2	15	25	58	83.33
White (Non-Hispanic)	2	6	33	59	91.84
African-American	0	10	40	50	90.00
Hispanic	Unreportable*				
Asian	Unreportable*				
Other	Unreportable*				
Title I	1	9	30	59	89.53
Migrant	Unreportable*				
Identified LEP	Unreportable*				
Extended Sch Services	0	18	43	39	82.14
Gifted/Talented	0	0	6	94	100.00
F/R Lunch Approved	2	16	40	42	81.40
Vocational/2 Credits	Unreportable*				
Disability	9	45	36	9	45.45
Alternate Assessment	Unreportable*				
NCLB Accountable Students					
Total	0	6	33	61	94.12
Female	0	0	37	63	100.00
Male	0	11	30	60	89.36
White (Non-Hispanic)	0	2	35	63	97.92
African-American	0	10	43	48	90.48
Hispanic	Unreportable*				
Asian	Unreportable*				
Other	Unreportable*				
Title I	0	6	33	61	94.12
Migrant	Unreportable*				
Identified LEP	Unreportable*				
Extended Sch Services	0	15	44	41	85.19
Gifted/Talented	0	0	6	94	100.00
F/R Lunch Approved	0	10	44	46	89.74
Vocational/2 Credits	Unreportable*				
Disability	Unreportable*				
Alternate Assessment	Unreportable*				

■ Novice
■ Apprentice
■ Proficient
■ Distinguished

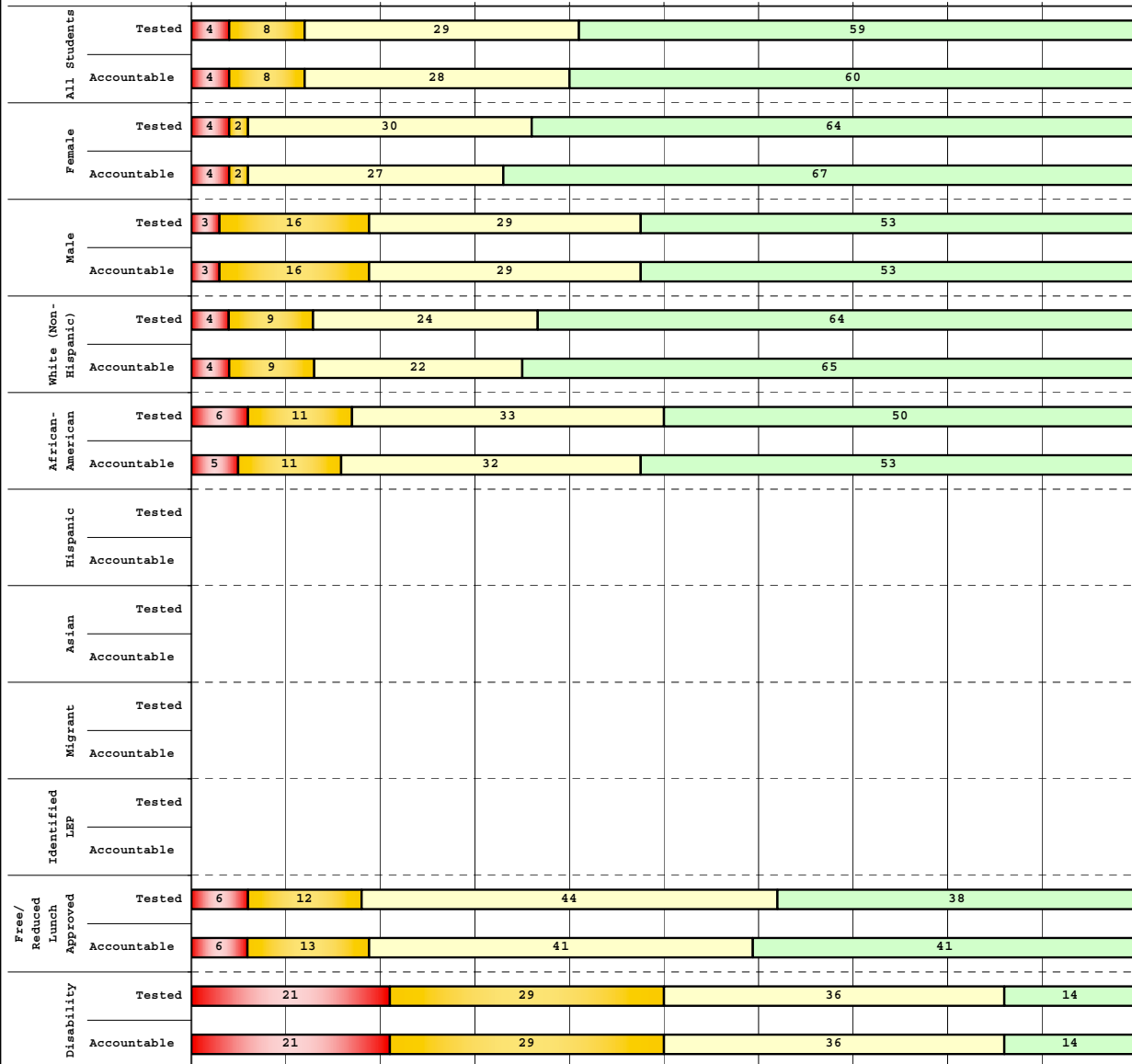
Percentage may not sum to 100% due to rounding. 'Unreportable*' indicates subpopulations with fewer than 10 students or subpopulations where all students score at the same performance level.



**2008-2009
INTERIM PERFORMANCE REPORT
MATHEMATICS DISAGGREGATION
Performance Level Percents**

School: Dixie Elementary Magnet School
District: Fayette County
Code: 165036
Grade: 04

0% 10% 20% 30% 40% 50% 60% 70% 80% 90% 100%

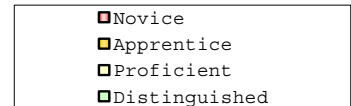


Tested Students

	N%	A%	P%	D%	P+D%
Total	4	8	29	59	88.24
Female	4	2	30	64	93.62
Male	3	16	29	53	81.58
White (Non-Hispanic)	4	9	24	64	87.27
African-American	6	11	33	50	83.33
Hispanic	Unreportable*				
Asian	Unreportable*				
Other	Unreportable*				
Title I	4	8	29	59	88.24
Migrant	Unreportable*				
Identified LEP	Unreportable*				
Extended Sch Services	0	28	56	17	72.22
Gifted/Talented	Unreportable*				
F/R Lunch Approved	6	12	44	38	82.35
Vocational/2 Credits	Unreportable*				
Disability	21	29	36	14	50.00
Alternate Assessment	Unreportable*				

NCLB Accountable Students

	N%	A%	P%	D%	P+D%
Total	4	8	28	60	87.95
Female	4	2	27	67	93.33
Male	3	16	29	53	81.58
White (Non-Hispanic)	4	9	22	65	87.04
African-American	5	11	32	53	84.21
Hispanic	Unreportable*				
Asian	Unreportable*				
Other	Unreportable*				
Title I	4	8	28	60	87.95
Migrant	Unreportable*				
Identified LEP	Unreportable*				
Extended Sch Services	0	29	53	18	70.59
Gifted/Talented	Unreportable*				
F/R Lunch Approved	6	13	41	41	81.25
Vocational/2 Credits	Unreportable*				
Disability	21	29	36	14	50.00
Alternate Assessment	Unreportable*				



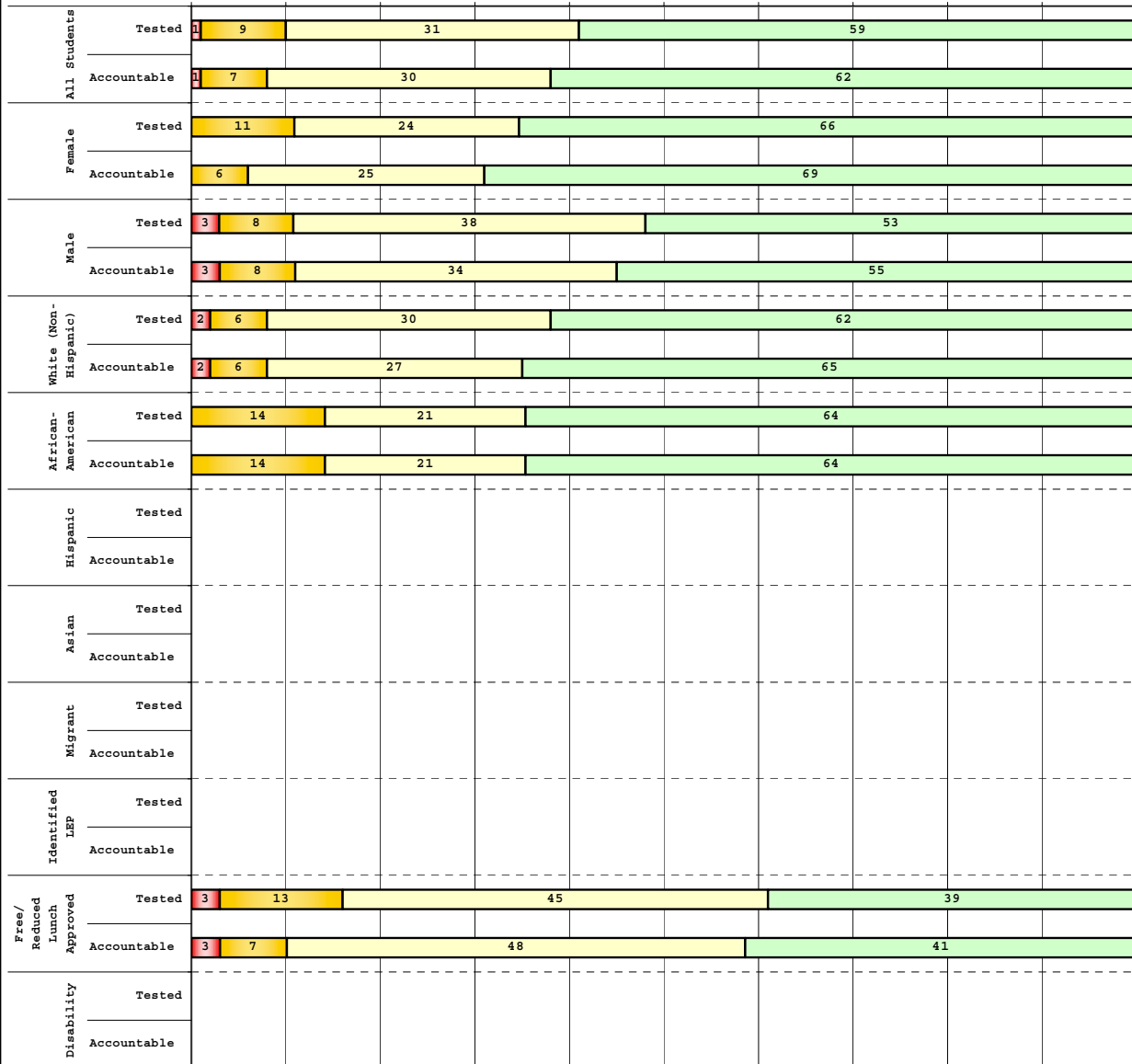
Percentage may not sum to 100% due to rounding. 'Unreportable*' indicates subpopulations with fewer than 10 students or subpopulations where all students score at the same performance level.



**2008-2009
INTERIM PERFORMANCE REPORT
MATHEMATICS DISAGGREGATION
Performance Level Percents**

School: Dixie Elementary Magnet School
 District: Fayette County
 Code: 165036
 Grade: 05

0% 10% 20% 30% 40% 50% 60% 70% 80% 90% 100%



	N%	A%	P%	D%	P+D%
Tested Students					
Total	1	9	31	59	89.74
Female	0	11	24	66	89.47
Male	3	8	38	53	90.00
White (Non-Hispanic)	2	6	30	62	92.45
African-American	0	14	21	64	85.71
Hispanic	Unreportable*				
Asian	Unreportable*				
Other	Unreportable*				
Title I	1	9	31	59	89.74
Migrant	Unreportable*				
Identified LEP	Unreportable*				
Extended Sch Services	0	31	44	25	68.75
Gifted/Talented	0	0	5	95	100.00
F/R Lunch Approved	3	13	45	39	83.87
Vocational/2 Credits	Unreportable*				
Disability	Unreportable*				
Alternate Assessment	Unreportable*				
NCLB Accountable Students					
Total	1	7	30	62	91.89
Female	0	6	25	69	94.44
Male	3	8	34	55	89.47
White (Non-Hispanic)	2	6	27	65	92.16
African-American	0	14	21	64	85.71
Hispanic	Unreportable*				
Asian	Unreportable*				
Other	Unreportable*				
Title I	1	7	30	62	91.89
Migrant	Unreportable*				
Identified LEP	Unreportable*				
Extended Sch Services	0	31	44	25	68.75
Gifted/Talented	0	0	5	95	100.00
F/R Lunch Approved	3	7	48	41	89.66
Vocational/2 Credits	Unreportable*				
Disability	Unreportable*				
Alternate Assessment	Unreportable*				

■ Novice
■ Apprentice
■ Proficient
■ Distinguished

Percentage may not sum to 100% due to rounding. 'Unreportable*' indicates subpopulations with fewer than 10 students or subpopulations where all students score at the same performance level.



2008-2009
INTERIM PERFORMANCE REPORT
MATHEMATICS CORE CONTENT

School: Dixie Elementary Magnet School
 District: Fayette County
 Code: 165036
 Grade: 03

	No. Items	No. Observations	SCHOOL								STATE								School -State Mean
			Percents						Mean	Std. Err.	Percents						Mean		
			B	0	1	2	3	4					No. Observations	B	0	1		2	3
OPEN RESPONSE																			
1.x.x - Number Prop Oper	5	212	0	13	33	25	18	11	1.8	0.1	125,243	0	21	35	26	10	8	1.5	0.3
2.x.x - Measurement	1	13	0	8	0	23	23	46	3.0	0.4	8,325	0	25	5	30	14	25	2.1	0.9
3.x.x - Geometry	2	28	0	0	14	32	32	21	2.6	0.2	16,777	0	8	24	35	13	20	2.1	0.5
4.x.x - Data Analysis & Probabilit	1	85	0	2	9	6	19	64	3.3	0.1	50,106	0	9	13	19	27	32	2.6	0.7
5.x.x - Algebraic Thinking	2	100	0	2	9	11	19	59	3.2	0.1	58,404	0	9	14	19	28	31	2.6	0.6
MULTIPLE CHOICE																			
1.x.x - Number Prop Oper	32	1,373	85	15	0				0.85	0.01	810,106	74	26	0				0.74	0.11
2.x.x - Measurement	7	312	91	9	1				0.91	0.02	183,647	81	18	0				0.81	0.10
3.x.x - Geometry	18	680	93	7	0				0.93	0.01	400,848	85	15	0				0.85	0.08
4.x.x - Data Analysis & Probabilit	8	325	79	21	1				0.79	0.03	192,126	69	31	0				0.69	0.10
5.x.x - Algebraic Thinking	11	370	86	14	0				0.86	0.02	217,089	78	22	0				0.78	0.08



2008-2009
INTERIM PERFORMANCE REPORT
MATHEMATICS CORE CONTENT

School: Dixie Elementary Magnet School
 District: Fayette County
 Code: 165036
 Grade: 04

	No. Items	No. Observations	SCHOOL								STATE								School -State Mean
			Percents						Mean	Std. Err.	Percents						Mean		
			B	0	1	2	3	4					No. Observations	B	0	1		2	3
OPEN RESPONSE																			
1.x.x - Number Prop Oper	4	125	0	10	14	26	22	27	2.4	0.1	73,656	0	17	24	29	19	12	1.9	0.5
2.x.x - Measurement	1	12	0	8	0	0	58	33	3.1	0.4	8,195	0	43	13	10	20	13	1.5	1.6
3.x.x - Geometry	2	95	0	6	12	21	20	41	2.8	0.1	57,352	0	11	20	17	19	33	2.4	0.4
4.x.x - Data Analysis & Probabilit	1	15	0	0	47	33	13	7	1.8	0.3	8,152	0	5	36	29	23	6	1.9	-0.1
5.x.x - Algebraic Thinking	2	93	0	2	24	30	27	17	2.3	0.1	57,508	0	5	27	32	25	11	2.1	0.2
MULTIPLE CHOICE																			
			Correct	Incorrect	Omit/Mult							Correct	Incorrect	Omit/Mult					
1.x.x - Number Prop Oper	31	1,099	80	20	0	0.80	0.01	664,194	67	33	0	0.67	0.13						
2.x.x - Measurement	7	234	85	15	0	0.85	0.03	139,170	62	38	0	0.62	0.23						
3.x.x - Geometry	14	466	90	10	0	0.90	0.02	278,460	77	23	0	0.77	0.13						
4.x.x - Data Analysis & Probabilit	12	501	86	14	0	0.86	0.02	303,394	71	29	0	0.71	0.15						
5.x.x - Algebraic Thinking	11	429	80	20	0	0.80	0.02	253,829	69	31	0	0.69	0.11						



2008-2009
INTERIM PERFORMANCE REPORT
MATHEMATICS CORE CONTENT

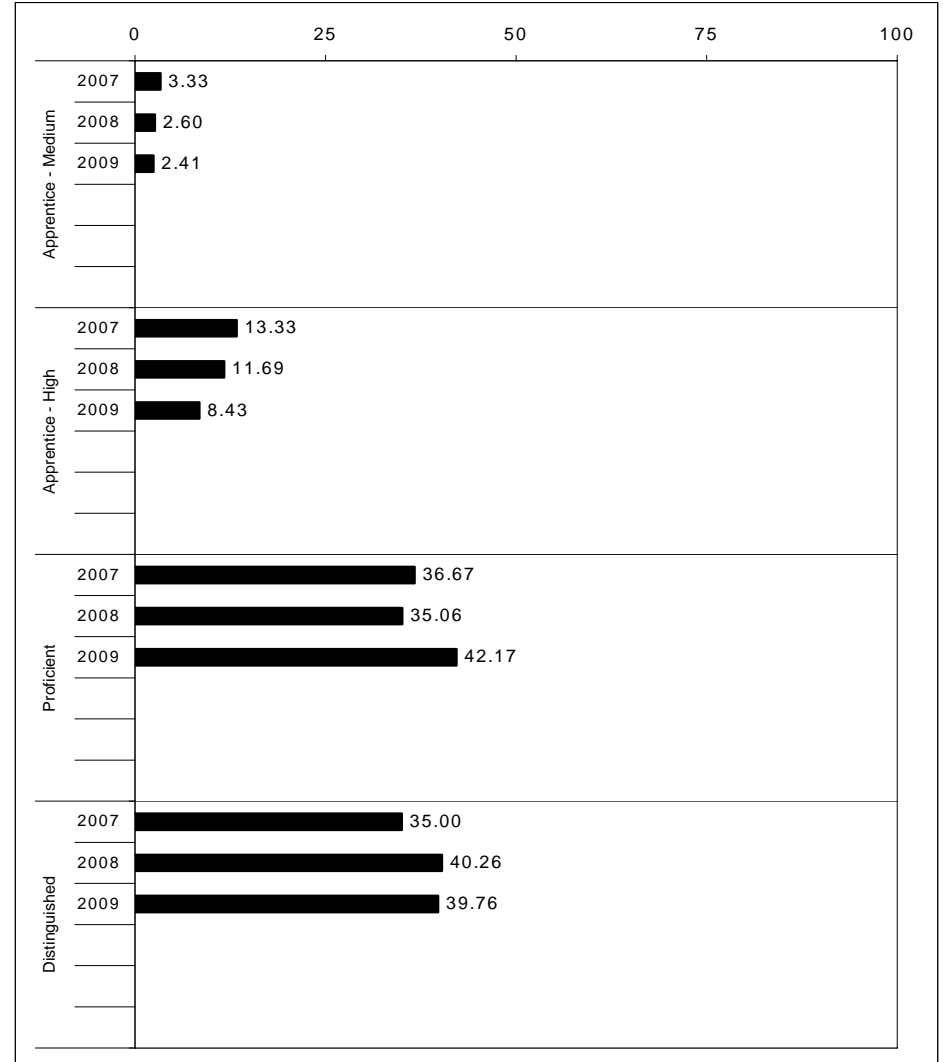
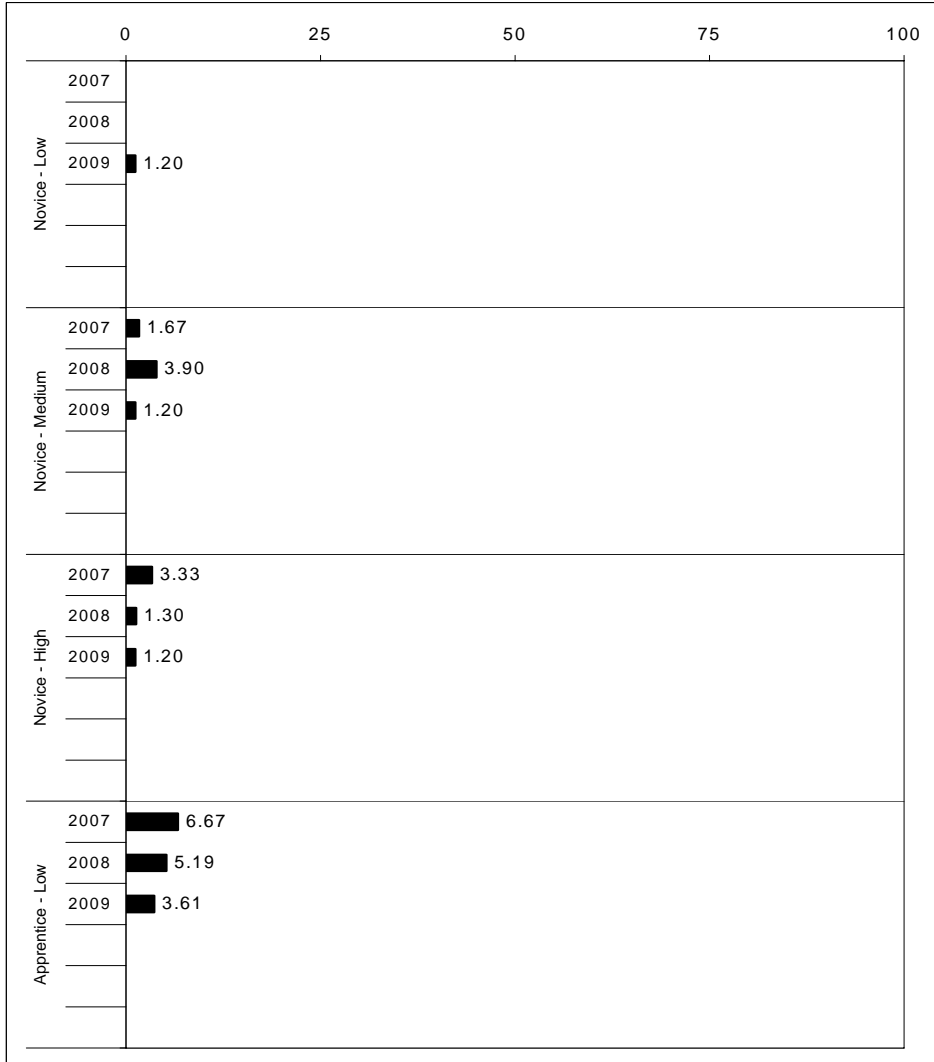
School: Dixie Elementary Magnet School
 District: Fayette County
 Code: 165036
 Grade: 05

	No. Items	No. Observations	SCHOOL								Std. Err.	No. Observations	STATE								School -State Mean
			B	0	1	2	3	4	Mean	B			0	1	2	3	4	Mean			
OPEN RESPONSE																					
1.x.x - Number Prop Oper	4	110	0	0	8	15	21	55	3.2	0.1	73,199	0	8	20	18	25	29	2.5	0.7		
2.x.x - Measurement	1	11	0	36	27	9	0	27	1.5	0.4	8,380	0	37	30	13	10	11	1.3	0.2		
3.x.x - Geometry	2	88	0	0	10	27	32	31	2.8	0.1	56,900	0	6	24	30	26	14	2.2	0.6		
4.x.x - Data Analysis & Probabilit	1	74	0	5	8	11	19	57	3.1	0.2	48,828	0	15	18	15	17	35	2.4	0.7		
5.x.x - Algebraic Thinking	1	13	0	0	0	31	8	62	3.3	0.4	8,005	0	13	15	20	17	35	2.5	0.8		
MULTIPLE CHOICE																					
1.x.x - Number Prop Oper	29	973	80	20	0				0.80	0.02	643,144	63	37	0				0.63	0.17		
2.x.x - Measurement	9	235	79	21	0				0.79	0.03	154,489	62	38	0				0.62	0.17		
3.x.x - Geometry	14	419	89	11	0				0.89	0.02	276,516	78	22	0				0.78	0.11		
4.x.x - Data Analysis & Probabilit	11	384	77	23	0				0.77	0.02	252,212	64	36	0				0.64	0.13		
5.x.x - Algebraic Thinking	10	370	83	17	0				0.83	0.02	244,140	65	35	0				0.65	0.18		



2008-2009
INTERIM PERFORMANCE REPORT
SCIENCE TREND DATA
Performance Level Percents

School: Dixie Elementary Magnet School
 District: Fayette County
 Code: 165036
 Grade: 04

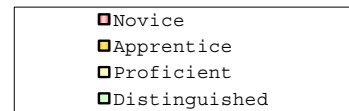
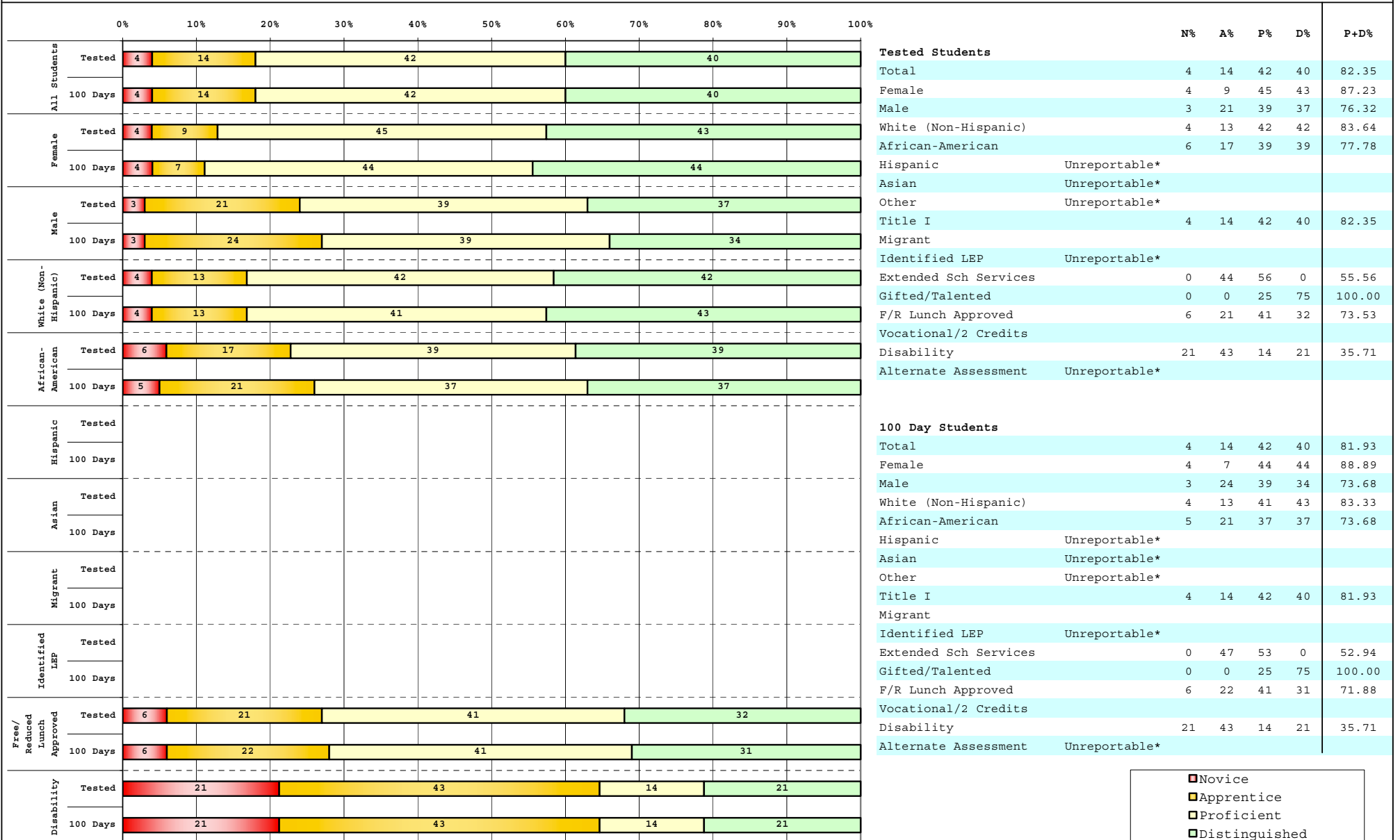


The horizontal bar represents the percent of students scoring at a performance level within a particular year. Percentages may not sum to 100% due to rounding.



**2008-2009
INTERIM PERFORMANCE REPORT
SCIENCE DISAGGREGATION
Performance Level Percents**

School: Dixie Elementary Magnet School
District: Fayette County
Code: 165036
Grade: 04



Percentage may not sum to 100% due to rounding. 'Unreportable*' indicates subpopulations with fewer than 10 students or subpopulations where all students score at the same performance level.



2008-2009
INTERIM PERFORMANCE REPORT
SCIENCE CORE CONTENT

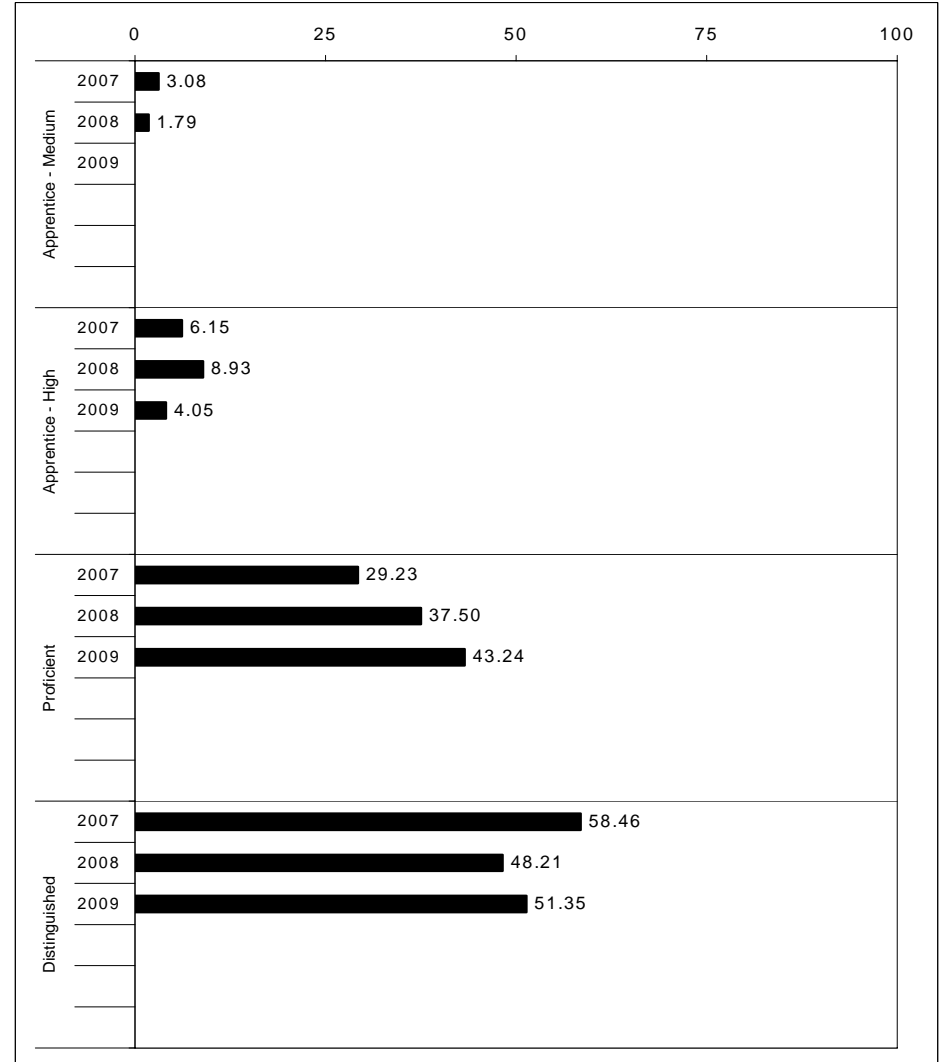
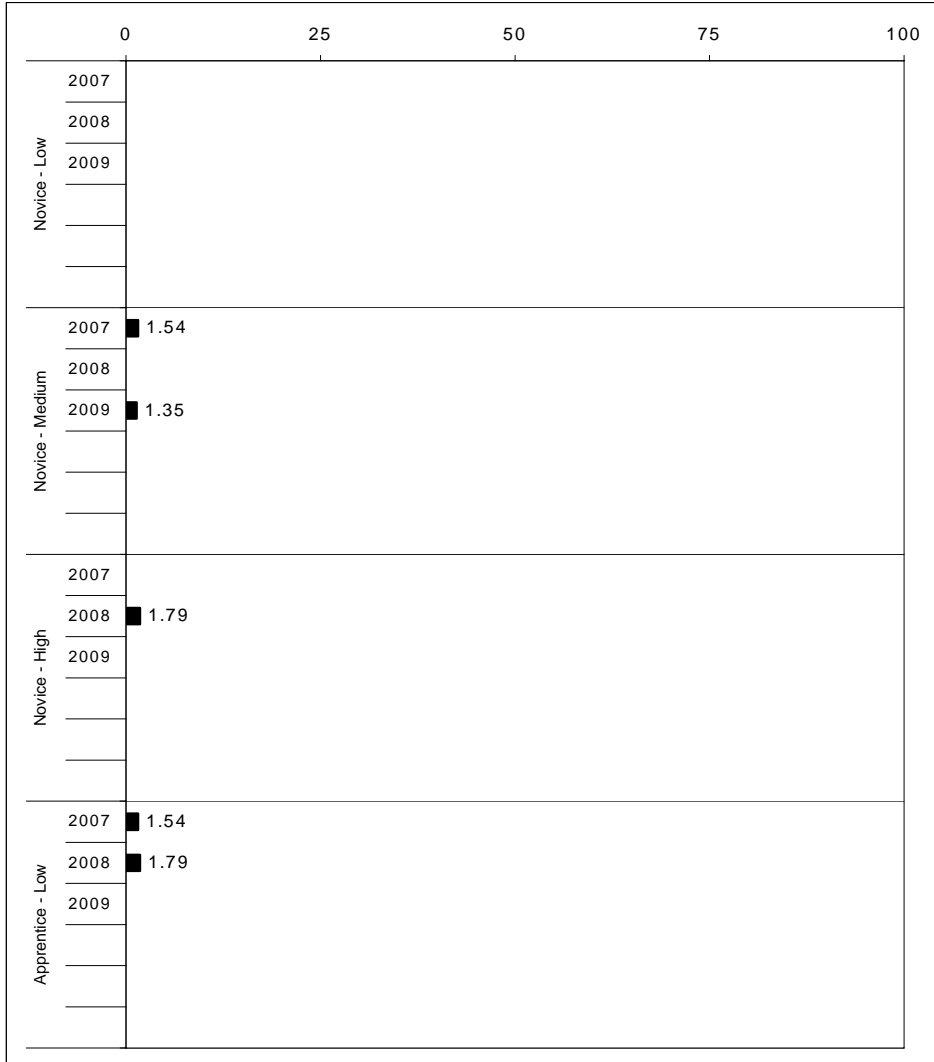
School: Dixie Elementary Magnet School
 District: Fayette County
 Code: 165036
 Grade: 04

	No. Items	No. Observations	SCHOOL								Mean	Std. Err.	No. Observations	STATE						Mean	School -State Mean
			B	0	1	2	3	4	Percents	B				0	1	2	3	4	Percents		
OPEN RESPONSE																					
1.x.x - Physical Science	2	28	0	7	18	46	21	7	2.0	0.2	16,337	0	17	19	42	17	5	1.7	0.3		
2.x.x - Earth Space Science	3	110	0	11	19	37	27	5	2.0	0.1	65,658	0	12	22	35	26	4	1.9	0.1		
3.x.x - Biological Science	3	108	0	3	8	27	57	5	2.5	0.1	65,506	0	2	11	33	44	9	2.5	0.0		
4.x.x - Unifying Concepts	2	93	0	2	8	25	44	22	2.8	0.1	57,508	0	3	13	33	35	15	2.5	0.3		
MULTIPLE CHOICE																					
1.x.x - Physical Science	18	656	84	16	0				0.84	0.02	393,336	82	18	0				0.81	0.03		
2.x.x - Earth Space Science	19	671	78	22	0				0.77	0.02	401,488	71	29	0				0.71	0.06		
3.x.x - Biological Science	22	780	83	17	0				0.83	0.01	467,138	78	22	0				0.78	0.05		
4.x.x - Unifying Concepts	14	532	90	10	0				0.90	0.02	319,534	84	15	0				0.84	0.06		



2008-2009
INTERIM PERFORMANCE REPORT
SOCIAL STUDIES TREND DATA
Performance Level Percents

School: Dixie Elementary Magnet School
 District: Fayette County
 Code: 165036
 Grade: 05



The horizontal bar represents the percent of students scoring at a performance level within a particular year. Percentages may not sum to 100% due to rounding.



2008-2009
INTERIM PERFORMANCE REPORT
SOCIAL STUDIES DISAGGREGATION
Performance Level Percents

School: Dixie Elementary Magnet School
 District: Fayette County
 Code: 165036
 Grade: 05

		0%	10%	20%	30%	40%	50%	60%	70%	80%	90%	100%	N%	A%	P%	D%	P+D%	
All Students	Tested												Tested Students					
	100 Days												Total	1	5	45	49	93.59
Female	Tested												Female	0	5	32	63	94.74
	100 Days												Male	3	5	58	35	92.50
Male	Tested												White (Non-Hispanic)	2	8	40	51	90.57
	100 Days												African-American	0	0	50	50	100.00
White (Non-Hispanic)	Tested												Hispanic	Unreportable*				
	100 Days												Asian	Unreportable*				
African-American	Tested												Other	Unreportable*				
	100 Days												Title I	1	5	45	49	93.59
Hispanic	Tested												Migrant	Unreportable*				
	100 Days												Identified LEP	Unreportable*				
Asian	Tested												Extended Sch Services	0	19	75	6	81.25
	100 Days												Gifted/Talented	0	0	11	89	100.00
Migrant	Tested												F/R Lunch Approved	3	0	68	29	96.77
	100 Days												Vocational/2 Credits					
Identified LEP	Tested												Disability	Unreportable*				
	100 Days												Alternate Assessment					
Free/Reduced Lunch Approved	Tested												100 Day Students					
	100 Days												Total	1	4	43	51	94.59
Disability	Tested												Female	0	6	28	67	94.44
	100 Days												Male	3	3	58	37	94.74
	Tested												White (Non-Hispanic)	2	6	39	53	92.16
	100 Days												African-American	0	0	50	50	100.00
	Tested												Hispanic	Unreportable*				
	100 Days												Asian	Unreportable*				
	Tested												Other	Unreportable*				
	100 Days												Title I	1	4	43	51	94.59
	Tested												Migrant	Unreportable*				
	100 Days												Identified LEP	Unreportable*				
	Tested												Extended Sch Services	0	19	75	6	81.25
	100 Days												Gifted/Talented	0	0	11	89	100.00
	Tested												F/R Lunch Approved	3	0	66	31	96.55
	100 Days												Vocational/2 Credits					
	Tested												Disability	Unreportable*				
	100 Days												Alternate Assessment					

■	Novice
■	Apprentice
■	Proficient
■	Distinguished

Percentage may not sum to 100% due to rounding. 'Unreportable*' indicates subpopulations with fewer than 10 students or subpopulations where all students score at the same performance level.



2008-2009
INTERIM PERFORMANCE REPORT
SOCIAL STUDIES CORE CONTENT

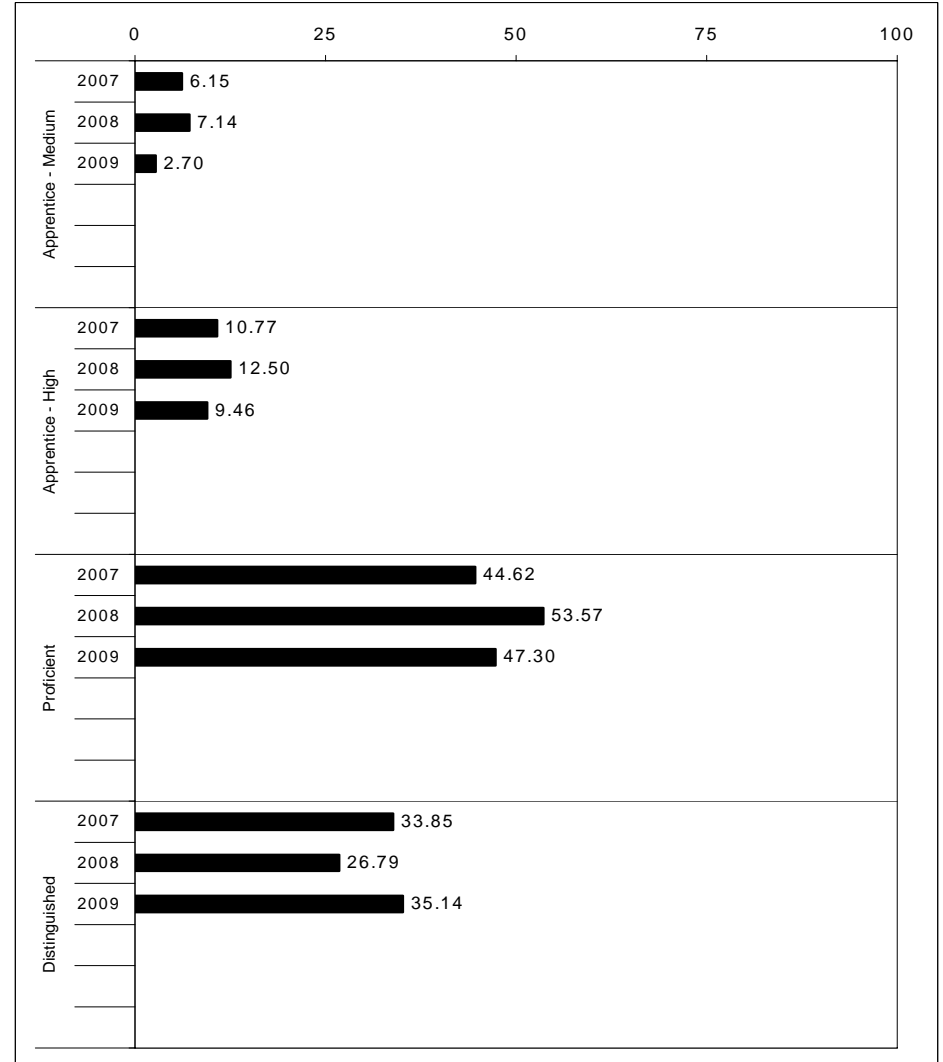
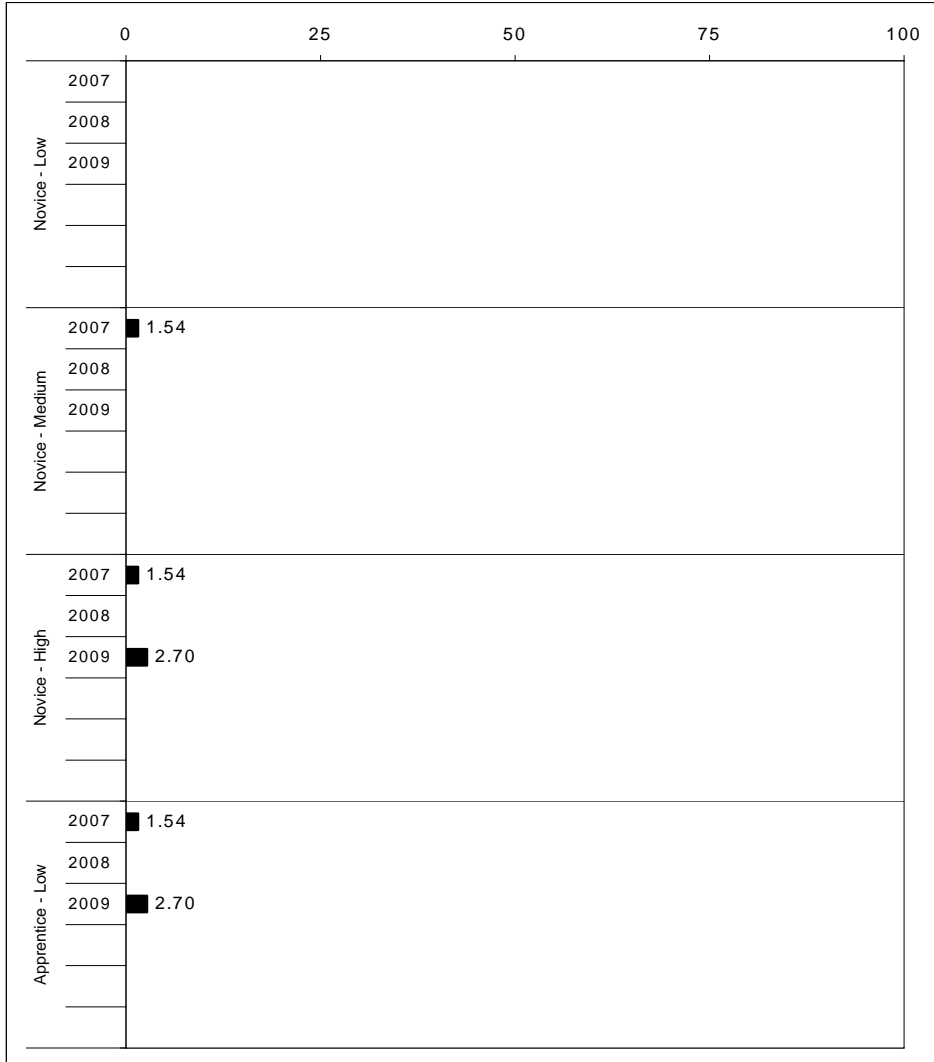
School: Dixie Elementary Magnet School
 District: Fayette County
 Code: 165036
 Grade: 05

	No. Items	No. Observations	SCHOOL								Std. Err.	No. Observations	STATE								School -State Mean
			B	0	1	2	3	4	Mean	B			0	1	2	3	4	Mean			
OPEN RESPONSE																					
1.x.x - Government & Civics	2	84	0	0	11	36	35	19	2.6	0.1	56,903	0	5	37	45	10	2	1.7	0.9		
2.x.x - Cultures & Societies	1	15	0	0	7	27	47	20	2.8	0.2	8,151	0	4	21	56	15	4	1.9	0.9		
3.x.x - Economics	1	74	0	1	14	34	27	24	2.6	0.1	48,828	0	11	33	41	12	3	1.6	1.0		
4.x.x - Geography	2	27	0	11	15	4	52	19	2.5	0.2	16,077	0	9	32	39	17	3	1.7	0.8		
5.x.x - Historical Perspective	3	96	0	0	17	55	15	14	2.3	0.1	65,353	0	7	35	46	10	2	1.7	0.6		
MULTIPLE CHOICE																					
1.x.x - Government & Civics	14	484	79	21	0				0.79	0.02	317,571	66	34	0				0.66	0.13		
2.x.x - Cultures & Societies	11	319	84	16	0				0.84	0.03	211,383	70	30	0				0.69	0.15		
3.x.x - Economics	11	380	87	13	0				0.87	0.02	252,215	73	27	0				0.73	0.14		
4.x.x - Geography	16	570	82	18	0				0.82	0.02	374,337	66	34	0				0.66	0.16		
5.x.x - Historical Perspective	27	886	84	16	0				0.84	0.02	586,076	69	31	0				0.69	0.15		



2008-2009
INTERIM PERFORMANCE REPORT
WRITING ON-DEMAND TREND DATA
Performance Level Percents

School: Dixie Elementary Magnet School
 District: Fayette County
 Code: 165036
 Grade: 05



The horizontal bar represents the percent of students scoring at a performance level within a particular year. Percentages may not sum to 100% due to rounding.



2008-2009
INTERIM PERFORMANCE REPORT
WRITING ON-DEMAND DISAGGREGATION
Performance Level Percents

School: Dixie Elementary Magnet School
 District: Fayette County
 Code: 165036
 Grade: 05

		0%	10%	20%	30%	40%	50%	60%	70%	80%	90%	100%	N%	A%	P%	D%	P+D%	
All Students	Tested	3	15	49				33										
	100 Days	3	15	47				35										
Female	Tested	8	45			47												
	100 Days	6	44			50												
Male	Tested	5	23	53				20										
	100 Days	5	24	50				21										
White (Non-Hispanic)	Tested	4	13	45				38										
	100 Days	4	14	43				39										
African-American	Tested	7	64			29												
	100 Days	7	64			29												
Hispanic	Tested																	
	100 Days																	
Asian	Tested																	
	100 Days																	
Migrant	Tested																	
	100 Days																	
Identified LEP	Tested																	
	100 Days																	
Free/Reduced Lunch Approved	Tested	6	26	52				16										
	100 Days	7	24	52				17										
Disability	Tested																	
	100 Days																	

		N%	A%	P%	D%	P+D%
Tested Students						
Total		3	15	49	33	82.05
Female		0	8	45	47	92.11
Male		5	23	53	20	72.50
White (Non-Hispanic)		4	13	45	38	83.02
African-American		0	7	64	29	92.86
Hispanic	Unreportable*					
Asian						
Other	Unreportable*					
Title I		3	15	49	33	82.05
Migrant						
Identified LEP	Unreportable*					
Extended Sch Services		0	44	56	0	56.25
Gifted/Talented		0	0	42	58	100.00
F/R Lunch Approved		6	26	52	16	67.74
Vocational/2 Credits						
Disability	Unreportable*					
Alternate Assessment						
100 Day Students						
Total		3	15	47	35	82.43
Female		0	6	44	50	94.44
Male		5	24	50	21	71.05
White (Non-Hispanic)		4	14	43	39	82.35
African-American		0	7	64	29	92.86
Hispanic	Unreportable*					
Asian						
Other	Unreportable*					
Title I		3	15	47	35	82.43
Migrant						
Identified LEP	Unreportable*					
Extended Sch Services		0	44	56	0	56.25
Gifted/Talented		0	0	42	58	100.00
F/R Lunch Approved		7	24	52	17	68.97
Vocational/2 Credits						
Disability	Unreportable*					
Alternate Assessment						

■ Novice
■ Apprentice
■ Proficient
■ Distinguished

Percentage may not sum to 100% due to rounding. 'Unreportable*' indicates subpopulations with fewer than 10 students or subpopulations where all students score at the same performance level.



2008-2009
INTERIM PERFORMANCE REPORT
WRITING ON-DEMAND CORE CONTENT

School: Dixie Elementary Magnet School
 District: Fayette County
 Code: 165036
 Grade: 05

WRITING PROMPT	SCHOOL												STATE												School
	No. Observations	Percents											Mean	Percents											Mean
	B	0	1	2	3	4	5	6	7	8		B	0	1	2	3	4	5	6	7	8				
Inform																									
1.X.X - Content	24	0	0	0	4	4	13	25	38	13	4	5.42	0	1	1	9	9	34	18	21	4	2	4.43	0.99	
2.X.X - Structure	24	0	0	0	4	4	21	21	38	13	0	5.21	0	1	2	9	10	35	19	19	3	1	4.33	0.88	
3.X.X - Convention	24	0	0	0	4	8	8	25	38	17	0	5.33	0	0	0	12	11	34	19	19	3	1	4.38	0.95	
Narrate for a purpose																									
1.X.X - Content	24	0	0	0	4	4	21	21	29	8	13	5.42	0	1	1	10	9	36	18	21	3	1	4.35	1.07	
2.X.X - Structure	24	0	0	0	0	8	25	17	33	8	8	5.33	0	1	2	10	10	37	17	19	3	1	4.27	1.06	
3.X.X - Convention	24	0	0	0	0	8	21	21	29	13	8	5.42	0	0	0	12	10	36	18	19	3	1	4.33	1.09	
Persuade																									
1.X.X - Content	26	0	0	0	4	4	19	15	27	15	15	5.65	0	1	1	8	8	33	19	21	5	3	4.50	1.15	
2.X.X - Structure	26	0	0	0	4	8	19	12	35	12	12	5.46	0	2	2	9	10	33	19	20	5	2	4.42	1.04	
3.X.X - Convention	26	0	0	0	8	4	15	19	31	12	12	5.42	0	0	0	11	10	32	19	20	5	2	4.50	0.92	

MULTIPLE CHOICE	No. Items	SCHOOL							STATE							School
		No. Observations	Percents			Mean	Std. Err.	No. Observations	Percents			Mean	-State Mean			
		Correct	Incorrect	Omit/Mult				Correct	Incorrect	Omit/Mult						
4.x.x - Writing Process	52	888	80	20	0	0.80	0.01	585,936	73	27	0	0.73	0.07			
4.10.x - Revising	16	195	76	24	0	0.76	0.03	130,317	66	34	0	0.66	0.10			
4.11.x - Editing	36	693	81	19	0	0.81	0.02	455,619	75	24	0	0.75	0.06			