



Interim Performance Report

In March 2009, the Kentucky General Assembly passed Senate Bill 1 (SB1) that was subsequently signed into law by the Governor. SB1 calls for a significant overhaul of the state's assessment and accountability system. The new assessment system begins in the spring of 2012. The school years of 2008-2009, 2009-2010 and 2010-2011 are described in SB1 as an interim period. This three-year period allows Kentucky to develop the new assessment system and to carry on state and federal testing requirements.

The Interim Performance Report includes the Kentucky Core Content Test (KCCT) in Reading (grades 3-8 and 10), Mathematics (grades 3-8 and 11), Science (grades 4, 7 and 11), Social Studies (grades 5, 8 and 11) and Writing On-Demand (grades 5, 8 and 12). The KCCT is based on the Kentucky Core Content for Assessment (Version 4.1) and contains multiple choice and open response questions. The Writing On-Demand test uses writing prompts that require students to craft a piece of writing in a 60 minute period.

The KCCT is developed under the direction of content advisory committees of Kentucky educators who draft, review and select test questions. All test items are reviewed by a bias review committee to enhance the fairness of items for all Kentucky students.

The KCCT continues to fulfill the requirements of the federal statute known as the No Child Left Behind Act of 2001. A separate accountability report for No Child Left Behind (NCLB) is published by the Kentucky Department of Education.

The Interim Performance Report focuses entirely on the five state-required content areas and provides data for schools or districts. The data in this report is not used directly for state accountability; although, these results can fulfill the requirements of Senate Bill 168 from 2002 and may be used by schools or districts for their own local accountability needs.

Performance standards are based on descriptions of Novice, Apprentice, Proficient and Distinguished (NAPD) student performance levels specific to the content area and grade being assessed. The performance standards, in conjunction with Kentucky's Core Content for Assessment, should allow instruction to better focus on the content area to be taught and on how well students must demonstrate achievement in each content area.

Reporting Changes for 2009

Based on SB1, Kentucky will not be reporting state accountability and academic indices as in the past. The report does have several familiar pages with performance level (NAPD) trend, core content and disaggregation data per content area. Districts and schools will still see distributions of how students scored in the Novice (with sublevels), Apprentice (with sublevels), Proficient and Distinguished performance levels.

Confidentiality Changes

Due to federal regulations around the Family Education Rights and Privacy Act (FERPA), the numbers of students have been removed. Though there is a need to report as much data as possible, there is also a paramount need to maintain the confidential aspects of individual scores. When scores are reported in what is commonly called "small cells" where very few students may be categorized, there is the possibility of revealing individual scores when numbers are reported. Numbers are reported to each district in a confidential report that accompanies the public Interim Performance Report.

2008-2009

INTERIM PERFORMANCE REPORT

School: Clays Mill Elementary School

District: Fayette County

Code: 165120

Grade: PRIMARY-05

CONTENTS OF THIS REPORT

Introduction	1
Academic Trend Data	
Reading Results	2-8
Mathematics Results	9-15
Science Results	16-18
Social Studies Results	19-21
Writing Results	22-24

For more information, refer to the 2009 Interim Assessment Interpretative Guide on the Kentucky Department of Education Web site (www.education.ky.gov).





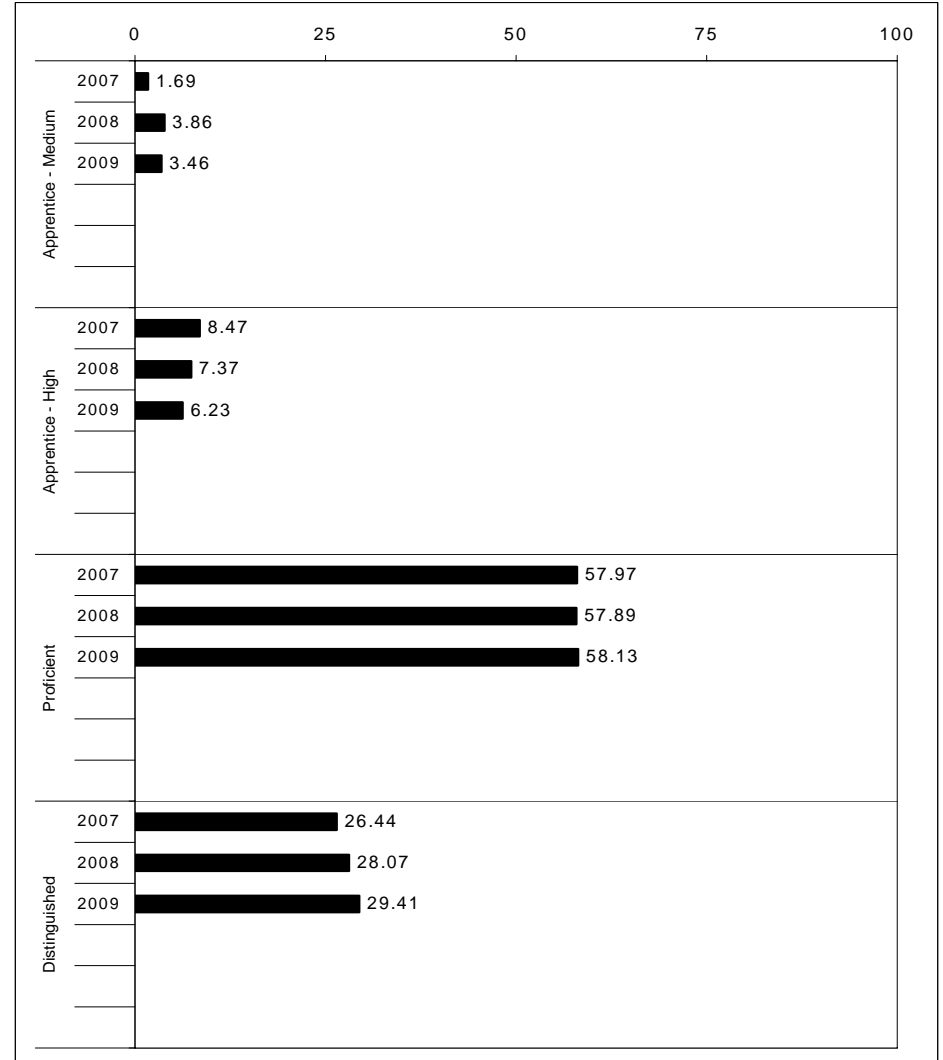
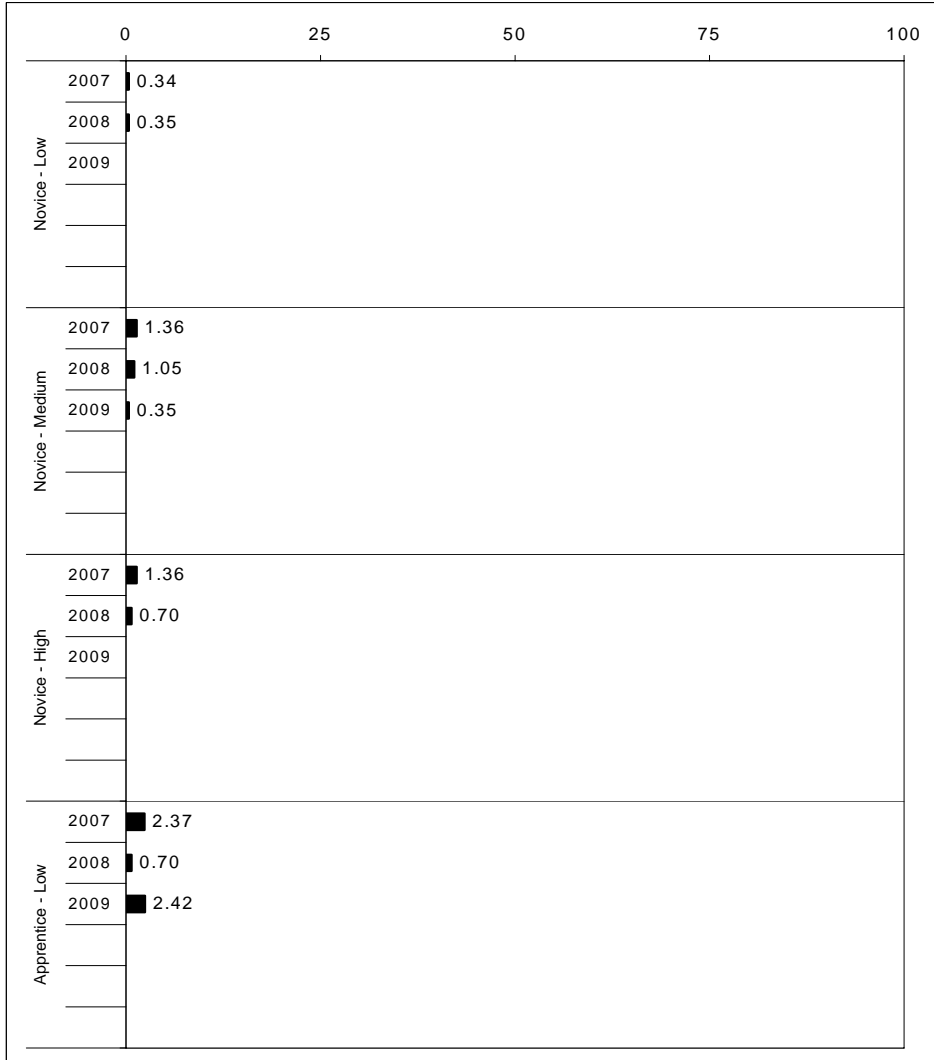
2008-2009
INTERIM PERFORMANCE REPORT
READING TREND DATA
Performance Level Percents

School: Clays Mill Elementary School

District: Fayette County

Code: 165120

Grade: ELEMENTARY



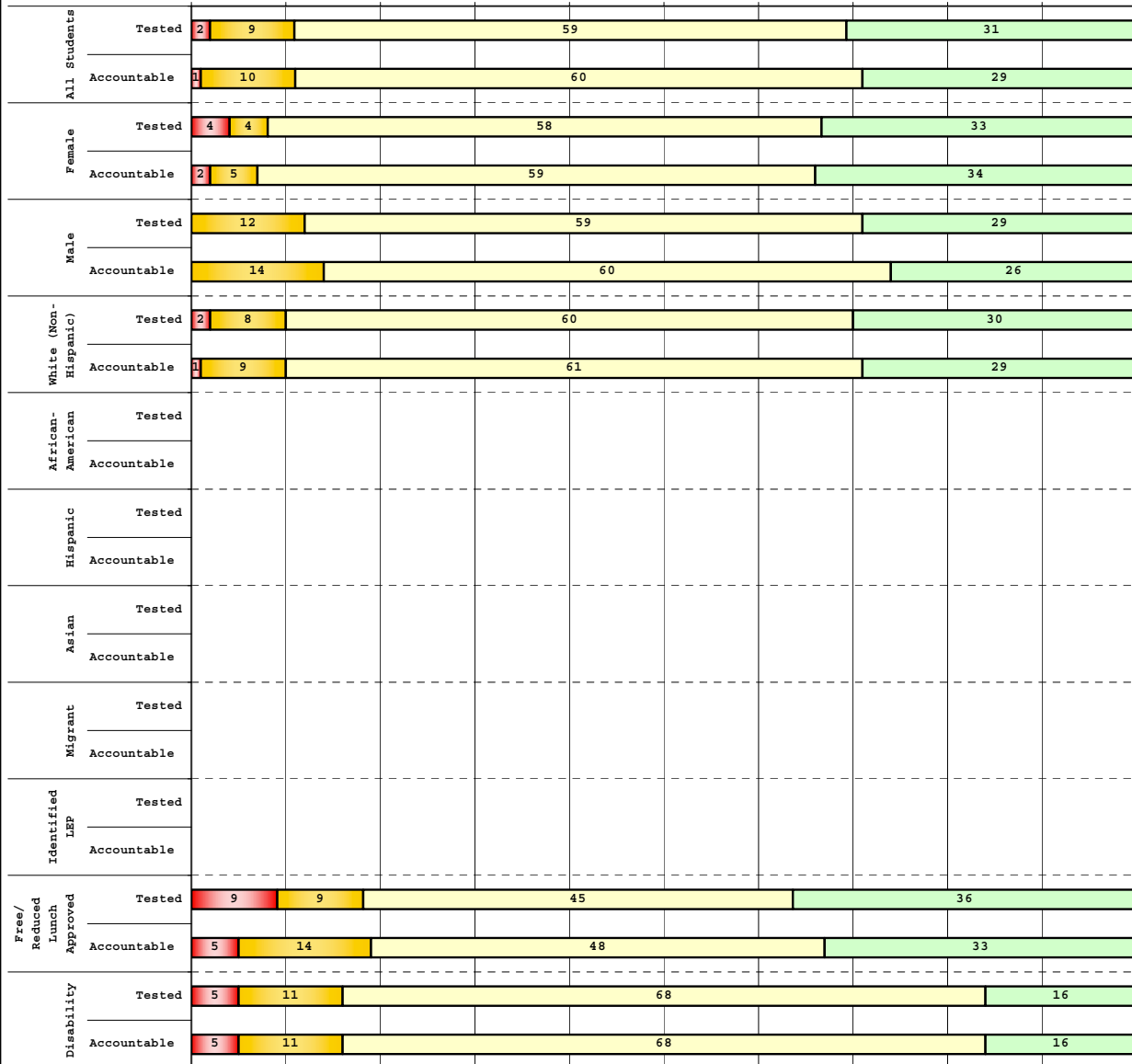
The horizontal bar represents the percent of students scoring at a performance level within a particular year. Percentages may not sum to 100% due to rounding.



2008-2009
INTERIM PERFORMANCE REPORT
READING DISAGGREGATION
Performance Level Percents

School: Clays Mill Elementary School
 District: Fayette County
 Code: 165120
 Grade: 03

0% 10% 20% 30% 40% 50% 60% 70% 80% 90% 100%



Tested Students

	N%	A%	P%	D%	P+D%
Total	2	9	59	31	89.42
Female	4	4	58	33	91.11
Male	0	12	59	29	88.14
White (Non-Hispanic)	2	8	60	30	90.00
African-American	Unreportable*				
Hispanic	Unreportable*				
Asian	Unreportable*				
Other	Unreportable*				
Title I					
Migrant					
Identified LEP	Unreportable*				
Extended Sch Services					
Gifted/Talented	0	0	32	68	100.00
F/R Lunch Approved	9	9	45	36	81.82
Vocational/2 Credits					
Disability	5	11	68	16	84.21
Alternate Assessment					

NCLB Accountable Students

	N%	A%	P%	D%	P+D%
Total	1	10	60	29	89.22
Female	2	5	59	34	93.18
Male	0	14	60	26	86.21
White (Non-Hispanic)	1	9	61	29	89.89
African-American	Unreportable*				
Hispanic	Unreportable*				
Asian	Unreportable*				
Other	Unreportable*				
Title I					
Migrant					
Identified LEP	Unreportable*				
Extended Sch Services					
Gifted/Talented	0	0	32	68	100.00
F/R Lunch Approved	5	14	48	33	80.95
Vocational/2 Credits					
Disability	5	11	68	16	84.21
Alternate Assessment					

Novice
 Apprentice
 Proficient
 Distinguished

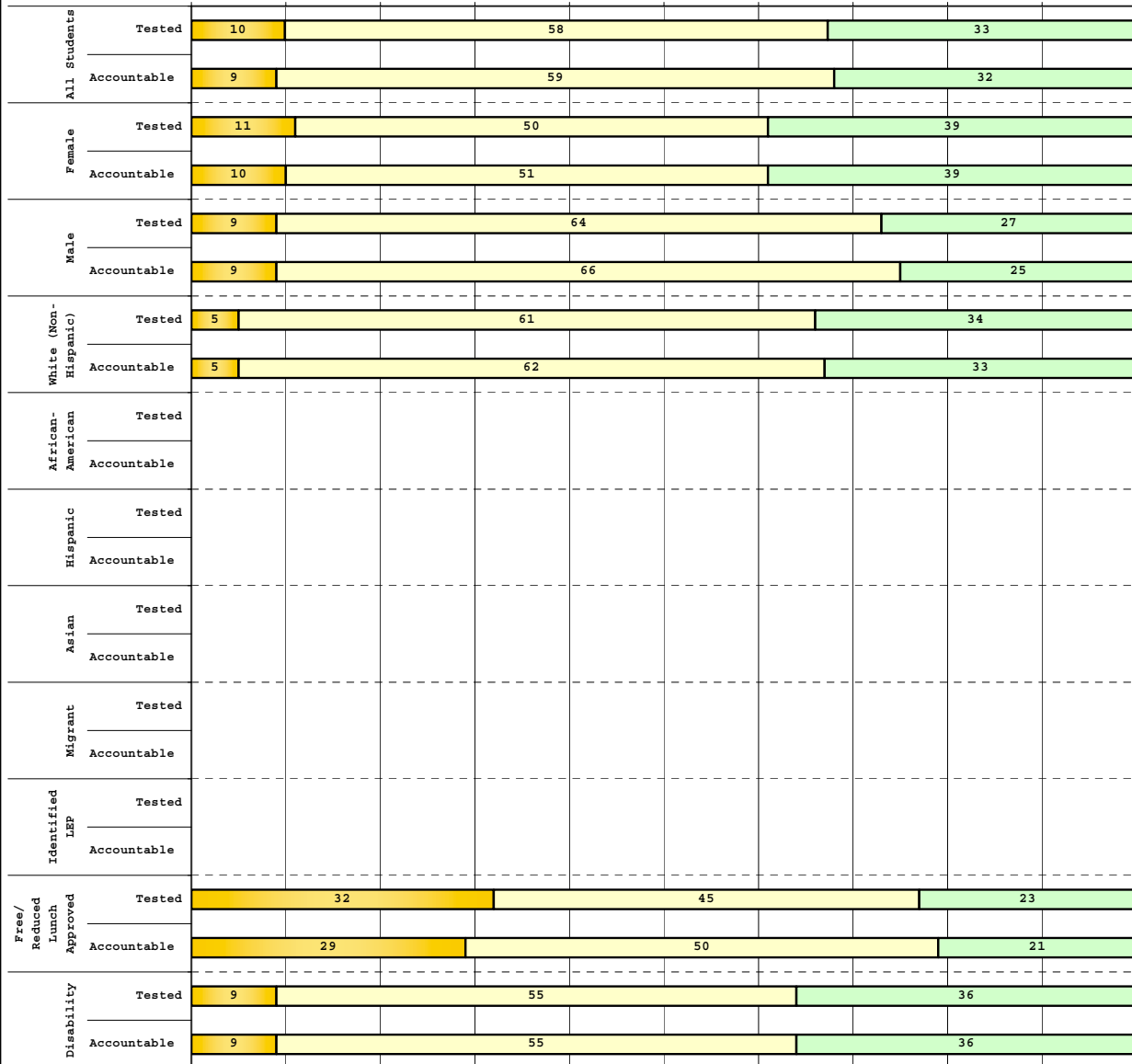
Percentage may not sum to 100% due to rounding. 'Unreportable*' indicates subpopulations with fewer than 10 students or subpopulations where all students score at the same performance level.



**2008-2009
INTERIM PERFORMANCE REPORT
READING DISAGGREGATION
Performance Level Percents**

School: Clays Mill Elementary School
District: Fayette County
Code: 165120
Grade: 04

0% 10% 20% 30% 40% 50% 60% 70% 80% 90% 100%



Tested Students

	N%	A%	P%	D%	P+D%
Total	0	10	58	33	90.36
Female	0	11	50	39	89.47
Male	0	9	64	27	91.11
White (Non-Hispanic)	0	5	61	34	94.59
African-American	Unreportable*				
Hispanic	Unreportable*				
Asian					
Other	Unreportable*				
Title I					
Migrant					
Identified LEP	Unreportable*				
Extended Sch Services					
Gifted/Talented	0	0	26	74	100.00
F/R Lunch Approved	0	32	45	23	68.18
Vocational/2 Credits					
Disability	0	9	55	36	90.91
Alternate Assessment					

NCLB Accountable Students

	N%	A%	P%	D%	P+D%
Total	0	9	59	32	90.59
Female	0	10	51	39	90.24
Male	0	9	66	25	90.91
White (Non-Hispanic)	0	5	62	33	94.74
African-American	Unreportable*				
Hispanic	Unreportable*				
Asian					
Other	Unreportable*				
Title I					
Migrant					
Identified LEP	Unreportable*				
Extended Sch Services					
Gifted/Talented	0	0	26	74	100.00
F/R Lunch Approved	0	29	50	21	70.83
Vocational/2 Credits					
Disability	0	9	55	36	90.91
Alternate Assessment					

■ Novice
■ Apprentice
■ Proficient
■ Distinguished

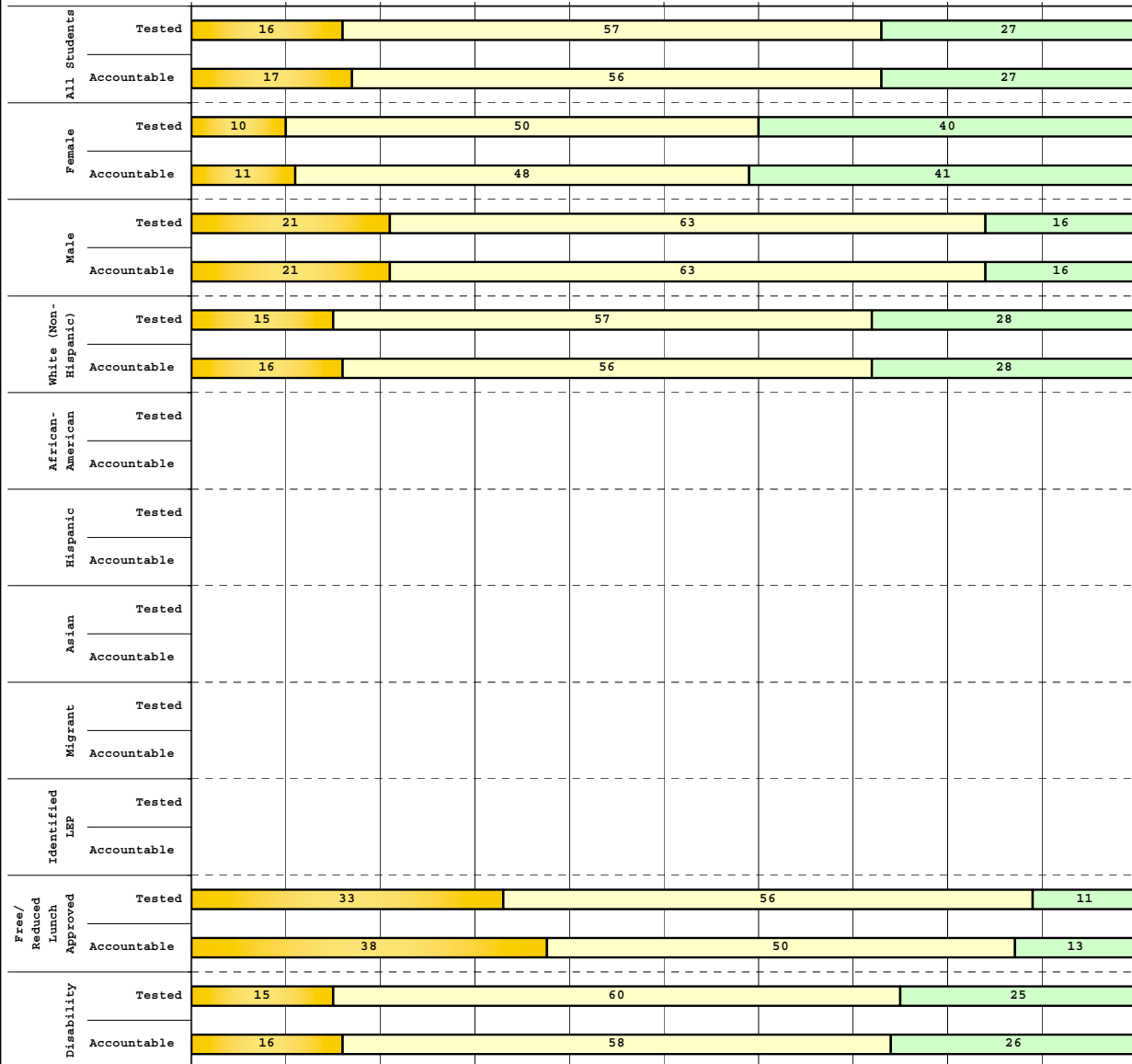
Percentage may not sum to 100% due to rounding. 'Unreportable*' indicates subpopulations with fewer than 10 students or subpopulations where all students score at the same performance level.



2008-2009
INTERIM PERFORMANCE REPORT
READING DISAGGREGATION
Performance Level Percents

School: Clays Mill Elementary School
 District: Fayette County
 Code: 165120
 Grade: 05

0% 10% 20% 30% 40% 50% 60% 70% 80% 90% 100%



	N%	A%	P%	D%	P+D%
Tested Students					
Total	0	16	57	27	83.81
Female	0	10	50	40	89.58
Male	0	21	63	16	78.95
White (Non-Hispanic)	0	15	57	28	84.69
African-American	Unreportable*				
Hispanic	Unreportable*				
Asian	Unreportable*				
Other	Unreportable*				
Title I	Unreportable*				
Migrant	Unreportable*				
Identified LEP	Unreportable*				
Extended Sch Services	Unreportable*				
Gifted/Talented	0	3	55	42	96.77
F/R Lunch Approved	0	33	56	11	66.67
Vocational/2 Credits	Unreportable*				
Disability	0	15	60	25	85.00
Alternate Assessment	Unreportable*				
NCLB Accountable Students					
Total	0	17	56	27	83.33
Female	0	11	48	41	89.13
Male	0	21	63	16	78.57
White (Non-Hispanic)	0	16	56	28	84.38
African-American	Unreportable*				
Hispanic	Unreportable*				
Asian	Unreportable*				
Other	Unreportable*				
Title I	Unreportable*				
Migrant	Unreportable*				
Identified LEP	Unreportable*				
Extended Sch Services	Unreportable*				
Gifted/Talented	0	3	55	42	96.77
F/R Lunch Approved	0	38	50	13	62.50
Vocational/2 Credits	Unreportable*				
Disability	0	16	58	26	84.21
Alternate Assessment	Unreportable*				

■ Novice
■ Apprentice
■ Proficient
■ Distinguished

Percentage may not sum to 100% due to rounding. 'Unreportable*' indicates subpopulations with fewer than 10 students or subpopulations where all students score at the same performance level.



2008-2009
INTERIM PERFORMANCE REPORT
READING CORE CONTENT

School: Clays Mill Elementary School
 District: Fayette County
 Code: 165120
 Grade: 03

	No. Items	No. Observations	SCHOOL								Std. Err.	No. Observations	STATE								School -State Mean
			B	0	1	2	3	4	Mean	B			0	1	2	3	4	Mean			
OPEN RESPONSE																					
2.0.x - Developing Understanding	2	204	0	5	25	49	16	5	1.9	0.1	100,212	0	10	30	44	14	2	1.7	0.2		
3.0.x - Interpreting Text	2	204	0	5	25	49	16	5	1.9	0.1	100,212	0	10	30	44	14	2	1.7	0.2		
MULTIPLE CHOICE																					
1.0.x - Forming a Foundation	32	799	87	13	0				0.87	0.01	392,589	83	17	0				0.83	0.04		
2.0.x - Developing Understanding	89	2,021	85	15	0				0.85	0.01	993,477	80	20	0				0.80	0.05		
3.0.x - Interpreting Text	31	950	85	15	0				0.85	0.01	468,115	77	23	0				0.77	0.08		
5.0.x - Critical Stance	15	428	86	14	0				0.86	0.02	208,359	79	21	0				0.79	0.07		



2008-2009
INTERIM PERFORMANCE REPORT
READING CORE CONTENT

School: Clays Mill Elementary School
 District: Fayette County
 Code: 165120
 Grade: 04

	No. Items	No. Observations	SCHOOL							Mean	Std. Err.	No. Observations	STATE							Mean	School -State Mean
			B	0	1	2	3	4	Percents				B	0	1	2	3	4	Percents		
OPEN RESPONSE																					
2.0.x - Developing Understanding	5	144	0	0	11	53	30	6	2.3	0.1	81,849	0	3	24	52	18	3	1.9	0.4		
3.0.x - Interpreting Text	6	225	0	1	12	43	33	10	2.4	0.1	131,199	0	4	22	45	23	5	2.0	0.4		
MULTIPLE CHOICE																					
1.0.x - Forming a Foundation	34	684	77	22	0				0.77	0.02	401,452	72	28	0				0.71	0.06		
2.0.x - Developing Understanding	76	1,510	78	22	0				0.78	0.01	868,422	73	27	0				0.73	0.05		
3.0.x - Interpreting Text	29	485	83	17	0				0.83	0.02	278,648	79	21	0				0.79	0.04		
5.0.x - Critical Stance	9	273	76	24	0				0.76	0.03	155,704	74	26	0				0.74	0.02		



2008-2009
INTERIM PERFORMANCE REPORT
READING CORE CONTENT

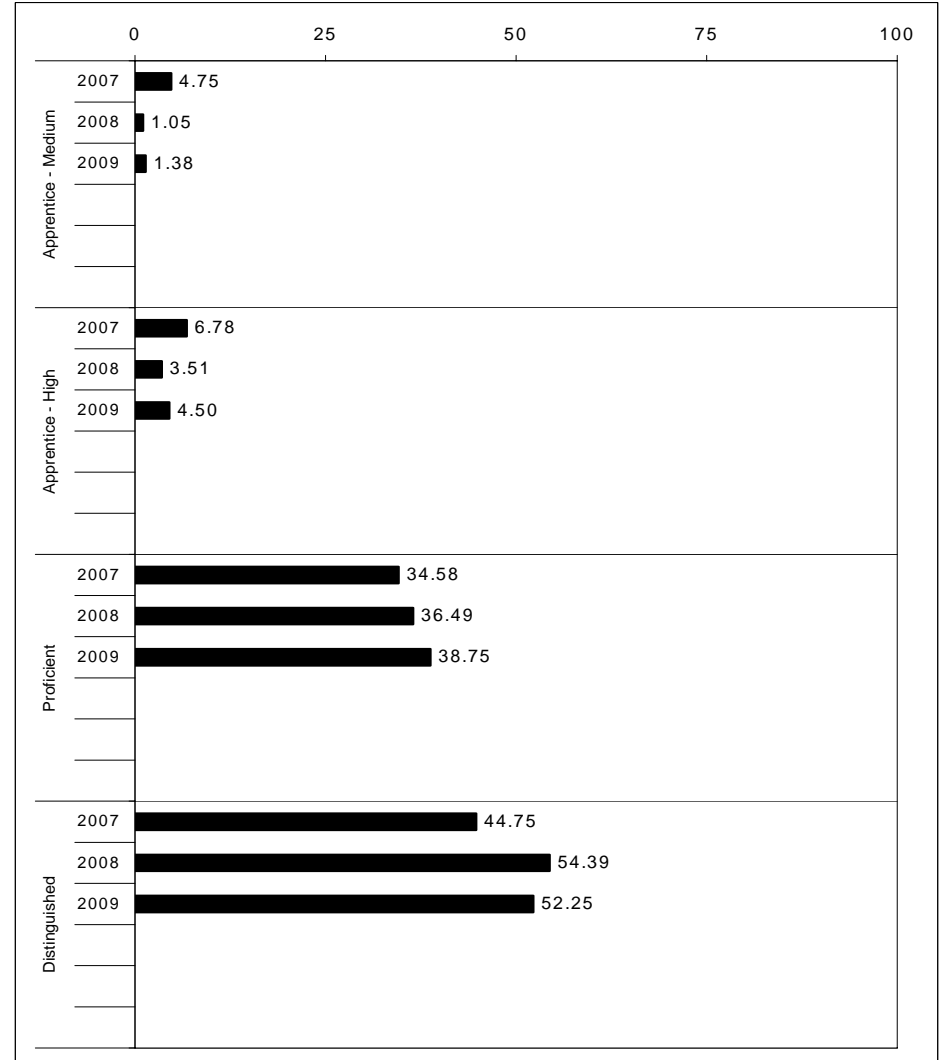
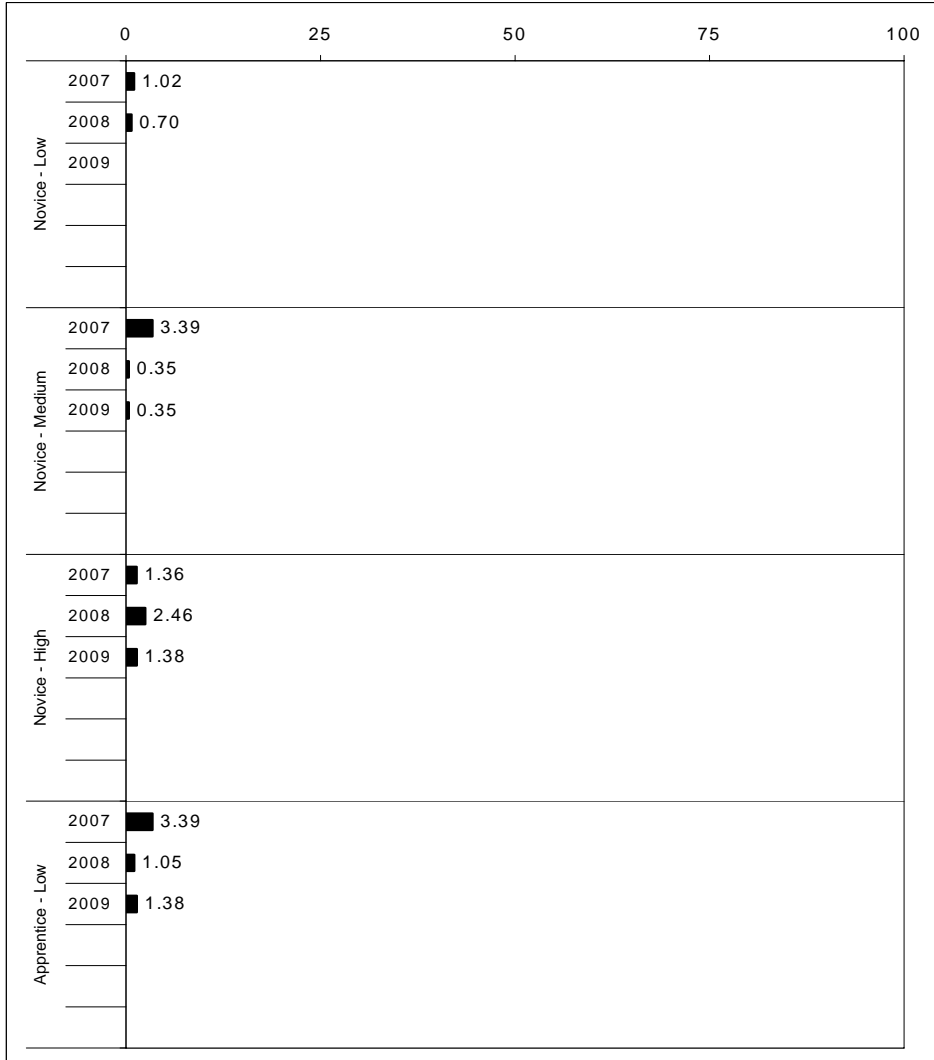
School: Clays Mill Elementary School
 District: Fayette County
 Code: 165120
 Grade: 05

	No. Items	No. Observations	SCHOOL							Mean	Std. Err.	No. Observations	STATE							Mean	School -State Mean
			B	0	1	2	3	4	Percents				B	0	1	2	3	4	Percents		
OPEN RESPONSE																					
2.0.x - Developing Understanding	6	190	0	0	15	54	25	6	2.2	0.1	89,507	0	5	23	48	20	5	2.0	0.2		
3.0.x - Interpreting Text	6	267	0	3	15	56	21	6	2.1	0.1	130,403	0	5	21	50	19	4	2.0	0.1		
MULTIPLE CHOICE																					
1.0.x - Forming a Foundation	28	564	84	16	0				0.84	0.02	268,187	74	26	0				0.74	0.10		
2.0.x - Developing Understanding	71	1,687	85	15	0				0.85	0.01	823,068	80	20	0				0.80	0.05		
3.0.x - Interpreting Text	27	729	85	15	0				0.85	0.01	341,653	81	19	0				0.81	0.04		
5.0.x - Critical Stance	17	637	85	15	0				0.85	0.02	300,671	75	25	0				0.75	0.10		



2008-2009
INTERIM PERFORMANCE REPORT
MATHEMATICS TREND DATA
Performance Level Percents

School: Clays Mill Elementary School
 District: Fayette County
 Code: 165120
 Grade: ELEMENTARY



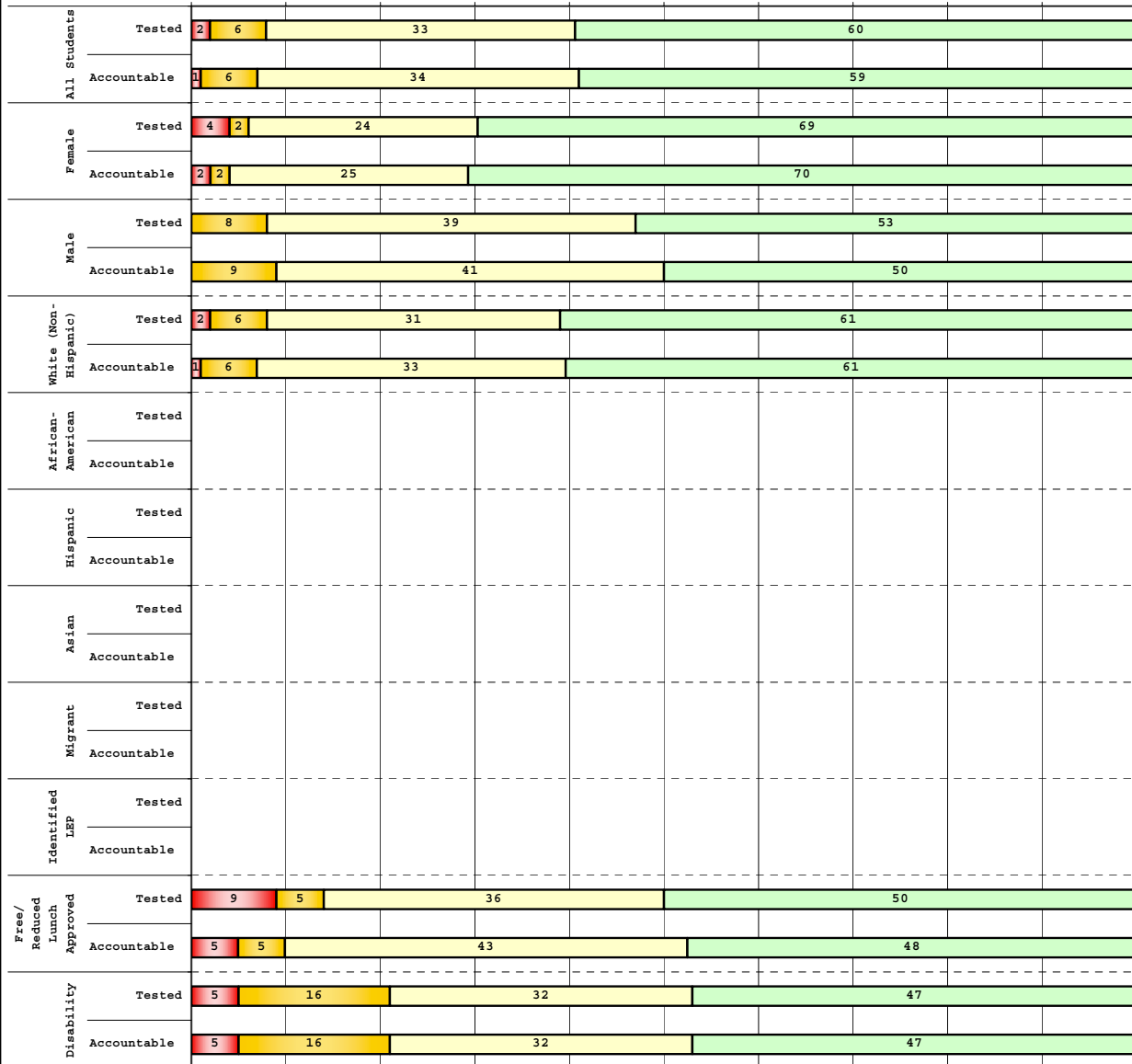
The horizontal bar represents the percent of students scoring at a performance level within a particular year. Percentages may not sum to 100% due to rounding.



2008-2009
INTERIM PERFORMANCE REPORT
MATHEMATICS DISAGGREGATION
Performance Level Percents

School: Clays Mill Elementary School
 District: Fayette County
 Code: 165120
 Grade: 03

0% 10% 20% 30% 40% 50% 60% 70% 80% 90% 100%



	N%	A%	P%	D%	P+D%
Tested Students					
Total	2	6	33	60	92.31
Female	4	2	24	69	93.33
Male	0	8	39	53	91.53
White (Non-Hispanic)	2	6	31	61	92.22
African-American	Unreportable*				
Hispanic	Unreportable*				
Asian	Unreportable*				
Other	Unreportable*				
Title I					
Migrant					
Identified LEP	Unreportable*				
Extended Sch Services					
Gifted/Talented	0	0	4	96	100.00
F/R Lunch Approved	9	5	36	50	86.36
Vocational/2 Credits					
Disability	5	16	32	47	78.95
Alternate Assessment					
NCLB Accountable Students					
Total	1	6	34	59	93.14
Female	2	2	25	70	95.45
Male	0	9	41	50	91.38
White (Non-Hispanic)	1	6	33	61	93.26
African-American	Unreportable*				
Hispanic	Unreportable*				
Asian	Unreportable*				
Other	Unreportable*				
Title I					
Migrant					
Identified LEP	Unreportable*				
Extended Sch Services					
Gifted/Talented	0	0	4	96	100.00
F/R Lunch Approved	5	5	43	48	90.48
Vocational/2 Credits					
Disability	5	16	32	47	78.95
Alternate Assessment					

■ Novice
■ Apprentice
■ Proficient
■ Distinguished

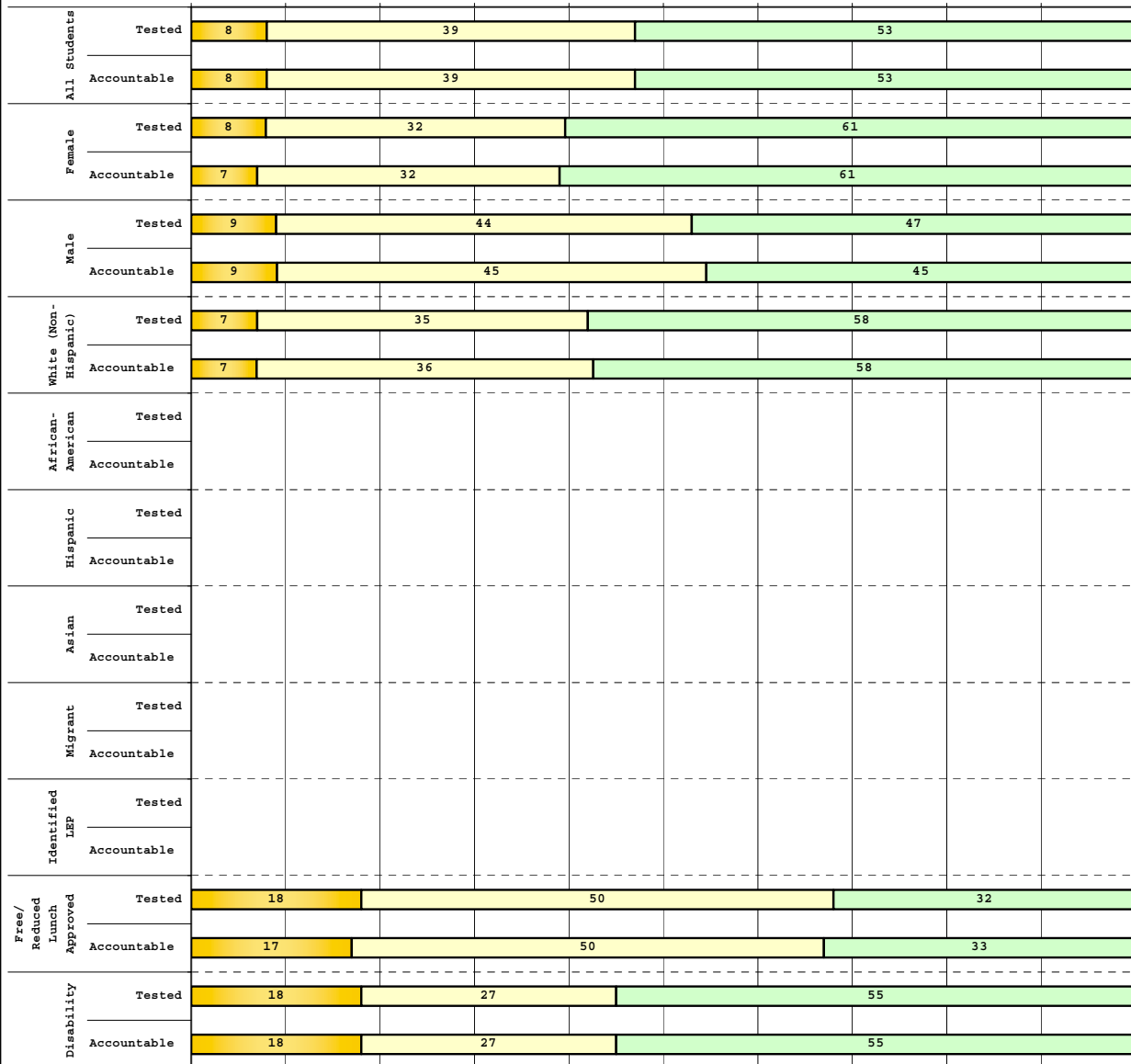
Percentage may not sum to 100% due to rounding. 'Unreportable*' indicates subpopulations with fewer than 10 students or subpopulations where all students score at the same performance level.



2008-2009
INTERIM PERFORMANCE REPORT
MATHEMATICS DISAGGREGATION
Performance Level Percents

School: Clays Mill Elementary School
 District: Fayette County
 Code: 165120
 Grade: 04

0% 10% 20% 30% 40% 50% 60% 70% 80% 90% 100%



	N%	A%	P%	D%	P+D%
Tested Students					
Total	0	8	39	53	91.57
Female	0	8	32	61	92.11
Male	0	9	44	47	91.11
White (Non-Hispanic)	0	7	35	58	93.24
African-American	Unreportable*				
Hispanic	Unreportable*				
Asian					
Other	Unreportable*				
Title I					
Migrant					
Identified LEP	Unreportable*				
Extended Sch Services					
Gifted/Talented	0	0	5	95	100.00
F/R Lunch Approved	0	18	50	32	81.82
Vocational/2 Credits					
Disability	0	18	27	55	81.82
Alternate Assessment					
NCLB Accountable Students					
Total	0	8	39	53	91.76
Female	0	7	32	61	92.68
Male	0	9	45	45	90.91
White (Non-Hispanic)	0	7	36	58	93.42
African-American	Unreportable*				
Hispanic	Unreportable*				
Asian					
Other	Unreportable*				
Title I					
Migrant					
Identified LEP	Unreportable*				
Extended Sch Services					
Gifted/Talented	0	0	5	95	100.00
F/R Lunch Approved	0	17	50	33	83.33
Vocational/2 Credits					
Disability	0	18	27	55	81.82
Alternate Assessment					

■ Novice
■ Apprentice
■ Proficient
■ Distinguished

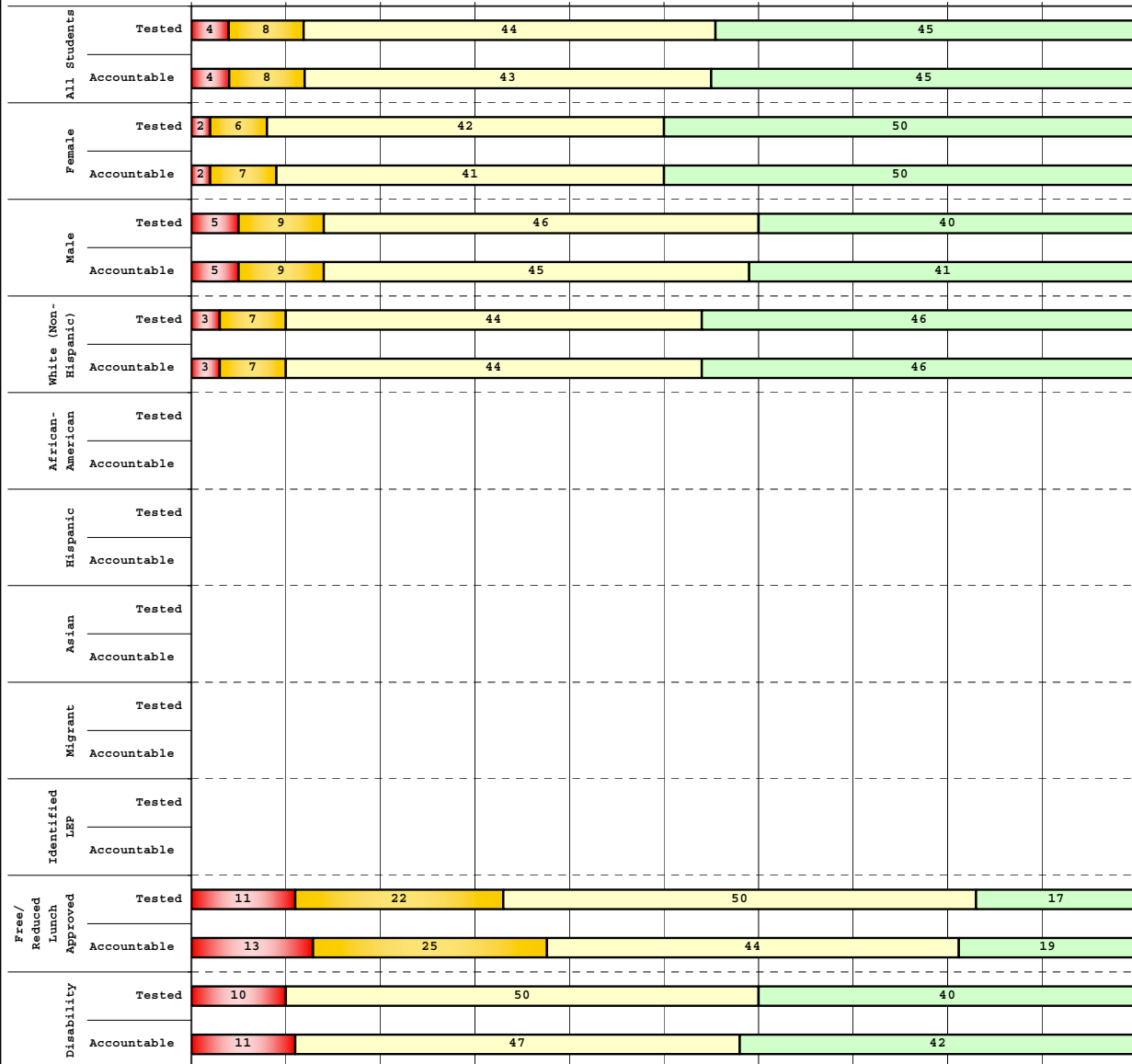
Percentage may not sum to 100% due to rounding. 'Unreportable*' indicates subpopulations with fewer than 10 students or subpopulations where all students score at the same performance level.



2008-2009
INTERIM PERFORMANCE REPORT
MATHEMATICS DISAGGREGATION
Performance Level Percents

School: Clays Mill Elementary School
 District: Fayette County
 Code: 165120
 Grade: 05

0% 10% 20% 30% 40% 50% 60% 70% 80% 90% 100%



	N%	A%	P%	D%	P+D%
Tested Students					
Total	4	8	44	45	88.57
Female	2	6	42	50	91.67
Male	5	9	46	40	85.96
White (Non-Hispanic)	3	7	44	46	89.80
African-American	Unreportable*				
Hispanic	Unreportable*				
Asian	Unreportable*				
Other	Unreportable*				
Title I	Unreportable*				
Migrant	Unreportable*				
Identified LEP	Unreportable*				
Extended Sch Services	Unreportable*				
Gifted/Talented	0	0	16	84	100.00
F/R Lunch Approved	11	22	50	17	66.67
Vocational/2 Credits	Unreportable*				
Disability	10	0	50	40	90.00
Alternate Assessment	Unreportable*				
NCLB Accountable Students					
Total	4	8	43	45	88.24
Female	2	7	41	50	91.30
Male	5	9	45	41	85.71
White (Non-Hispanic)	3	7	44	46	89.58
African-American	Unreportable*				
Hispanic	Unreportable*				
Asian	Unreportable*				
Other	Unreportable*				
Title I	Unreportable*				
Migrant	Unreportable*				
Identified LEP	Unreportable*				
Extended Sch Services	Unreportable*				
Gifted/Talented	0	0	16	84	100.00
F/R Lunch Approved	13	25	44	19	62.50
Vocational/2 Credits	Unreportable*				
Disability	11	0	47	42	89.47
Alternate Assessment	Unreportable*				

■ Novice
■ Apprentice
■ Proficient
■ Distinguished

Percentage may not sum to 100% due to rounding. 'Unreportable*' indicates subpopulations with fewer than 10 students or subpopulations where all students score at the same performance level.



2008-2009
INTERIM PERFORMANCE REPORT
MATHEMATICS CORE CONTENT

School: Clays Mill Elementary School
 District: Fayette County
 Code: 165120
 Grade: 03

	No. Items	No. Observations	SCHOOL								STATE								School -State Mean
			Percents						Mean	Std. Err.	Percents						Mean		
			B	0	1	2	3	4					No. Observations	B	0	1		2	3
OPEN RESPONSE																			
1.x.x - Number Prop Oper	5	255	0	12	27	33	13	15	1.9	0.1	125,243	0	21	35	26	10	8	1.5	0.4
2.x.x - Measurement	1	18	0	11	0	11	22	56	3.1	0.3	8,325	0	25	5	30	14	25	2.1	1.0
3.x.x - Geometry	2	34	0	3	18	41	12	26	2.4	0.2	16,777	0	8	24	35	13	20	2.1	0.3
4.x.x - Data Analysis & Probabilit	1	102	0	6	2	13	25	55	3.2	0.1	50,106	0	9	13	19	27	32	2.6	0.6
5.x.x - Algebraic Thinking	2	119	0	5	3	11	25	56	3.3	0.1	58,404	0	9	14	19	28	31	2.6	0.7
MULTIPLE CHOICE																			
1.x.x - Number Prop Oper	32	1,650	Correct	Incorrect	Omit/Mult				0.83	0.01	810,106	Correct	Incorrect	Omit/Mult				0.74	0.09
2.x.x - Measurement	7	374	83	17	0				0.87	0.02	183,647	74	26	0				0.81	0.06
3.x.x - Geometry	18	816	87	13	0				0.88	0.01	400,848	81	18	0				0.85	0.03
4.x.x - Data Analysis & Probabilit	8	391	88	12	0				0.80	0.02	192,126	85	15	0				0.69	0.11
5.x.x - Algebraic Thinking	11	441	80	20	0				0.82	0.02	217,089	69	31	0				0.78	0.04



2008-2009
INTERIM PERFORMANCE REPORT
MATHEMATICS CORE CONTENT

School: Clays Mill Elementary School
 District: Fayette County
 Code: 165120
 Grade: 04

	No. Items	No. Observations	SCHOOL								STATE								School -State Mean
			Percents						Mean	Std. Err.	Percents						Mean		
			B	0	1	2	3	4					No. Observations	B	0	1		2	3
OPEN RESPONSE																			
1.x.x - Number Prop Oper	4	129	0	9	14	28	30	19	2.3	0.1	73,656	0	17	24	29	19	12	1.9	0.4
2.x.x - Measurement	1	16	0	44	13	13	25	6	1.4	0.4	8,195	0	43	13	10	20	13	1.5	-0.1
3.x.x - Geometry	2	98	0	3	2	22	27	46	3.1	0.1	57,352	0	11	20	17	19	33	2.4	0.7
4.x.x - Data Analysis & Probabilit	1	14	0	0	0	36	50	14	2.8	0.3	8,152	0	5	36	29	23	6	1.9	0.9
5.x.x - Algebraic Thinking	2	99	0	1	23	38	26	11	2.2	0.1	57,508	0	5	27	32	25	11	2.1	0.1
MULTIPLE CHOICE																			
1.x.x - Number Prop Oper	31	1,147	77	23	0				0.77	0.01	664,194	67	33	0				0.67	0.10
2.x.x - Measurement	7	244	79	21	0				0.79	0.03	139,170	62	38	0				0.62	0.17
3.x.x - Geometry	14	476	86	14	0				0.86	0.02	278,460	77	23	0				0.77	0.09
4.x.x - Data Analysis & Probabilit	12	528	83	17	0				0.83	0.02	303,394	71	29	0				0.71	0.12
5.x.x - Algebraic Thinking	11	440	78	22	0				0.78	0.02	253,829	69	31	0				0.69	0.09



2008-2009
INTERIM PERFORMANCE REPORT
MATHEMATICS CORE CONTENT

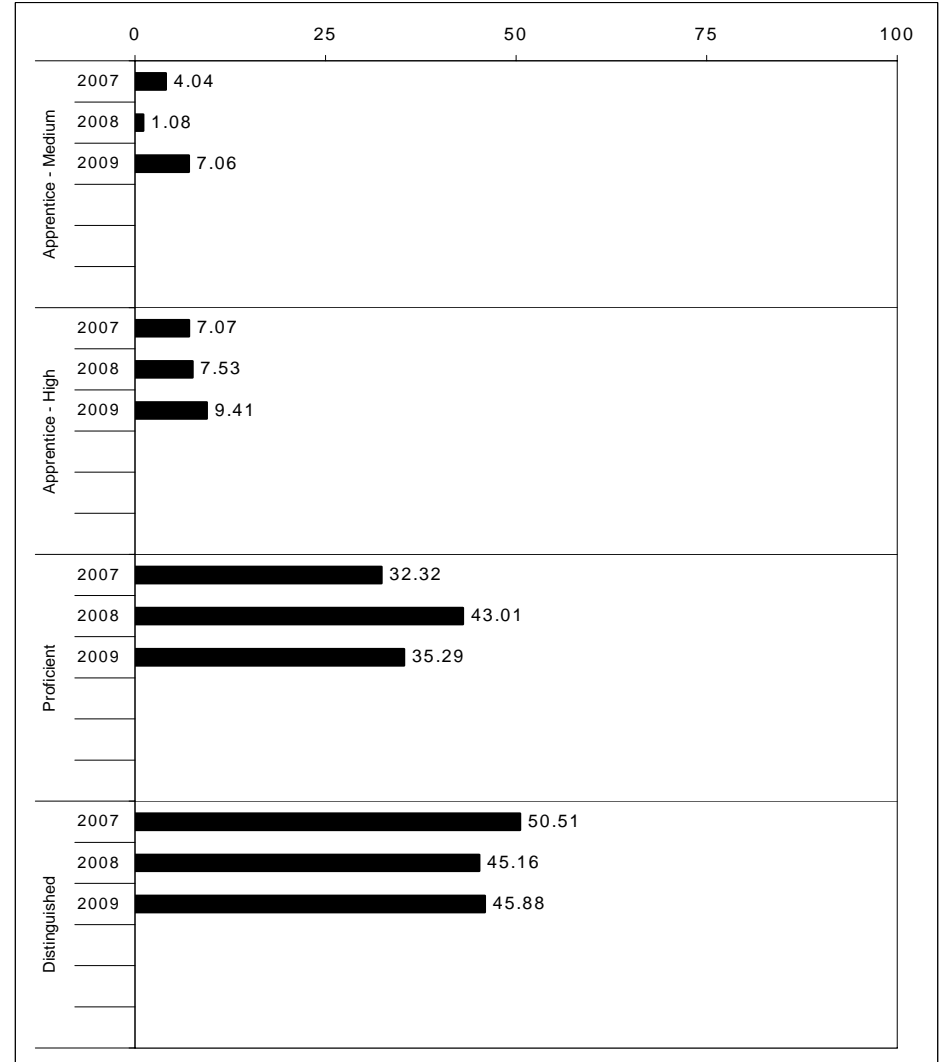
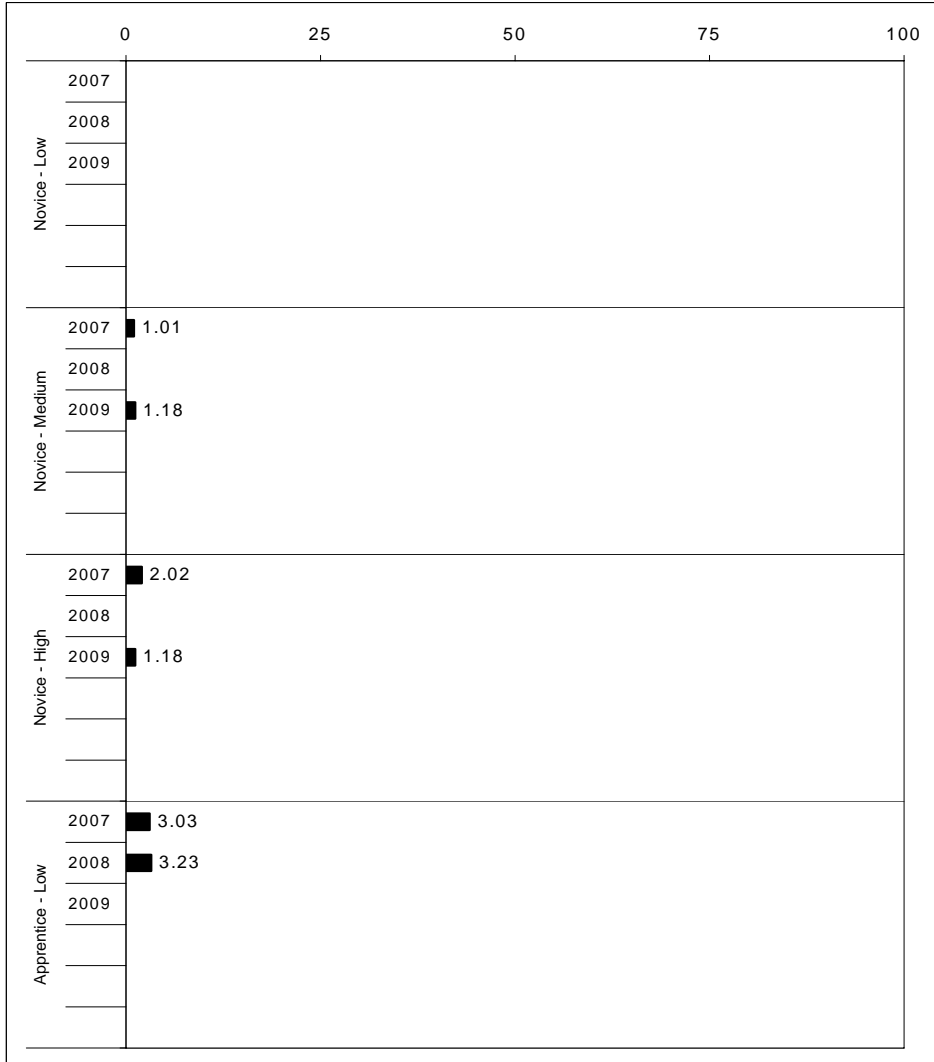
School: Clays Mill Elementary School
 District: Fayette County
 Code: 165120
 Grade: 05

	No. Items	No. Observations	SCHOOL								STATE								School -State Mean
			Percents						Mean	Std. Err.	Percents						Mean		
			B	0	1	2	3	4					No. Observations	B	0	1		2	3
OPEN RESPONSE																			
1.x.x - Number Prop Oper	4	152	0	3	13	14	25	46	3.0	0.1	73,199	0	8	20	18	25	29	2.5	0.5
2.x.x - Measurement	1	13	0	15	23	23	0	38	2.2	0.4	8,380	0	37	30	13	10	11	1.3	0.9
3.x.x - Geometry	2	122	0	3	20	23	37	16	2.4	0.1	56,900	0	6	24	30	26	14	2.2	0.2
4.x.x - Data Analysis & Probabilit	1	102	0	9	12	12	16	52	2.9	0.1	48,828	0	15	18	15	17	35	2.4	0.5
5.x.x - Algebraic Thinking	1	19	0	5	5	16	5	68	3.3	0.3	8,005	0	13	15	20	17	35	2.5	0.8
MULTIPLE CHOICE																			
1.x.x - Number Prop Oper	29	1,339	Correct	Incorrect	Omit/Mult				0.73	0.01	643,144	Correct	Incorrect	Omit/Mult				0.63	0.10
2.x.x - Measurement	9	325	73	27	0				0.78	0.03	154,489	63	37	0				0.62	0.16
3.x.x - Geometry	14	579	79	22	0				0.85	0.02	276,516	62	38	0				0.78	0.07
4.x.x - Data Analysis & Probabilit	11	530	85	15	0				0.76	0.02	252,212	78	22	0				0.64	0.12
5.x.x - Algebraic Thinking	10	510	76	24	0				0.77	0.02	244,140	64	36	0				0.65	0.12



2008-2009
INTERIM PERFORMANCE REPORT
SCIENCE TREND DATA
Performance Level Percents

School: Clays Mill Elementary School
 District: Fayette County
 Code: 165120
 Grade: 04

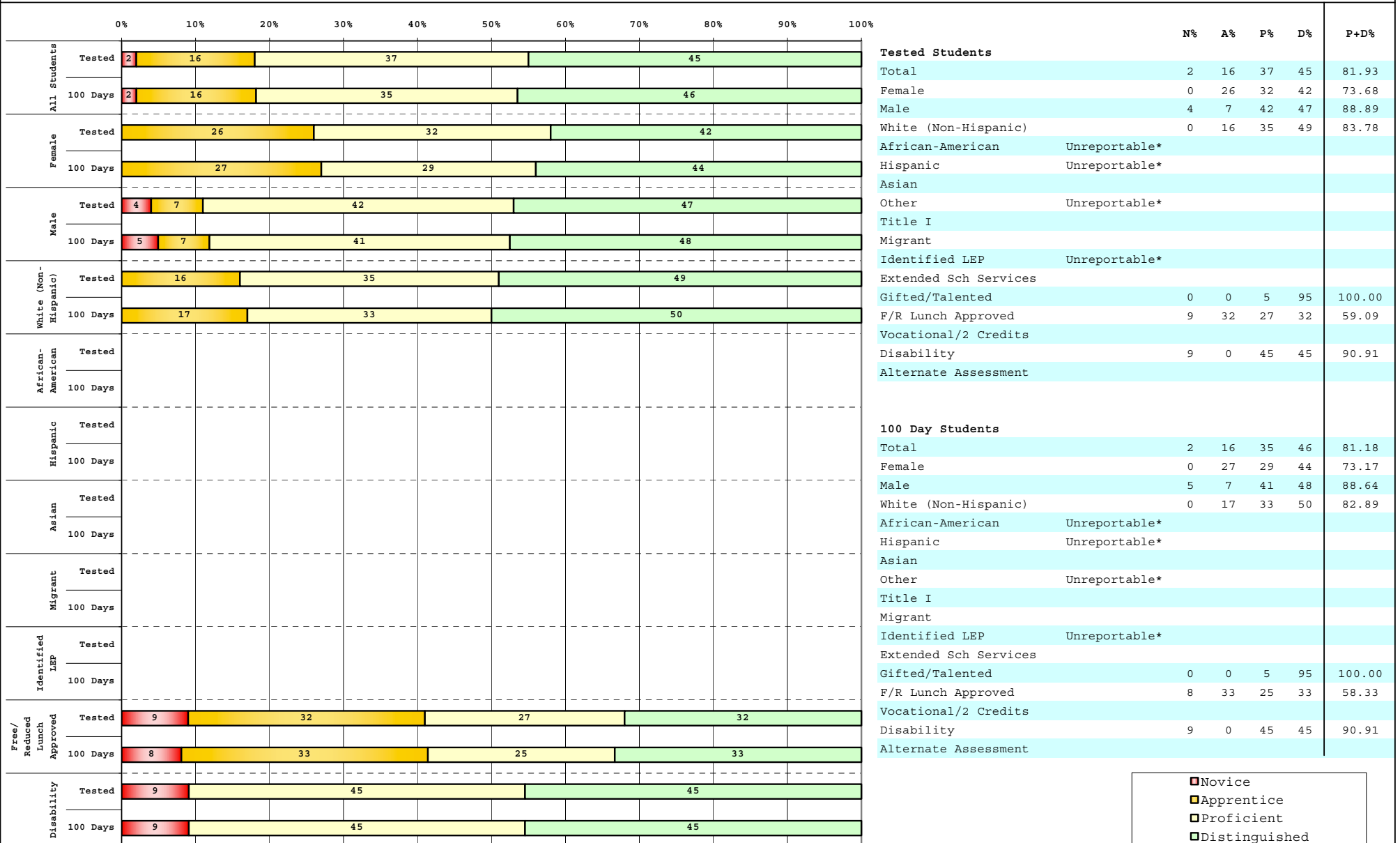


The horizontal bar represents the percent of students scoring at a performance level within a particular year. Percentages may not sum to 100% due to rounding.



**2008-2009
INTERIM PERFORMANCE REPORT
SCIENCE DISAGGREGATION
Performance Level Percents**

School: Clays Mill Elementary School
District: Fayette County
Code: 165120
Grade: 04



■	Novice
■	Apprentice
■	Proficient
■	Distinguished

Percentage may not sum to 100% due to rounding. 'Unreportable*' indicates subpopulations with fewer than 10 students or subpopulations where all students score at the same performance level.



2008-2009
INTERIM PERFORMANCE REPORT
SCIENCE CORE CONTENT

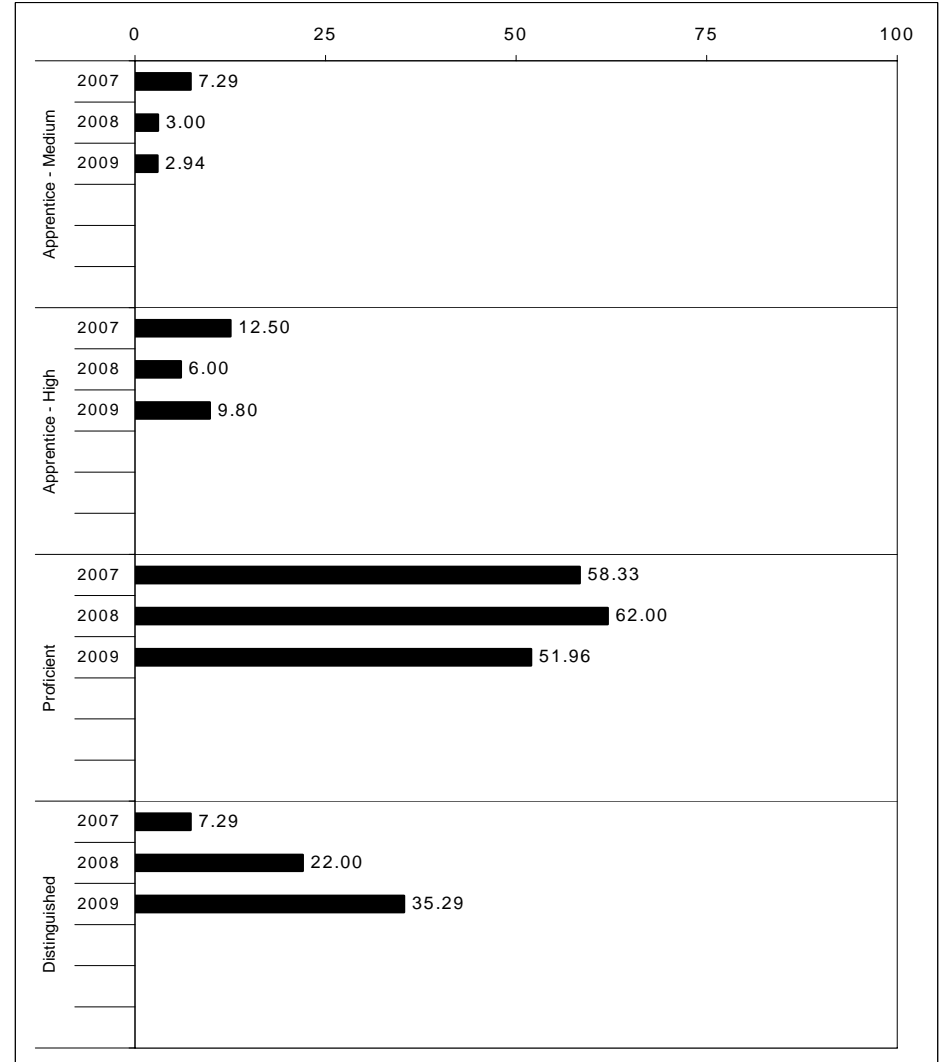
School: Clays Mill Elementary School
 District: Fayette County
 Code: 165120
 Grade: 04

	No. Items	No. Observations	SCHOOL								STATE								School -State Mean	
			Percents						Mean	Std. Err.	No. Observations	Percents						Mean		
			B	0	1	2	3	4							B	0	1		2	3
OPEN RESPONSE																				
1.x.x - Physical Science	2	27	0	15	19	37	22	7	1.9	0.2	16,337	0	17	19	42	17	5	1.7	0.2	
2.x.x - Earth Space Science	3	115	0	7	17	37	30	10	2.2	0.1	65,658	0	12	22	35	26	4	1.9	0.3	
3.x.x - Biological Science	3	113	0	0	5	32	55	8	2.7	0.1	65,506	0	2	11	33	44	9	2.5	0.2	
4.x.x - Unifying Concepts	2	99	0	1	9	25	34	30	2.8	0.1	57,508	0	3	13	33	35	15	2.5	0.3	
MULTIPLE CHOICE																				
			Correct	Incorrect	Omit/Mult							Correct	Incorrect	Omit/Mult						
1.x.x - Physical Science	18	680	84	16	0	0.84	0.01	393,336	82	18	0	0.81	0.03							
2.x.x - Earth Space Science	19	694	78	22	0	0.78	0.02	401,488	71	29	0	0.71	0.07							
3.x.x - Biological Science	22	807	81	19	0	0.81	0.01	467,138	78	22	0	0.78	0.03							
4.x.x - Unifying Concepts	14	553	89	11	0	0.89	0.02	319,534	84	15	0	0.84	0.05							



2008-2009
INTERIM PERFORMANCE REPORT
SOCIAL STUDIES TREND DATA
Performance Level Percents

School: Clays Mill Elementary School
 District: Fayette County
 Code: 165120
 Grade: 05

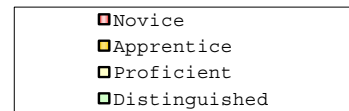
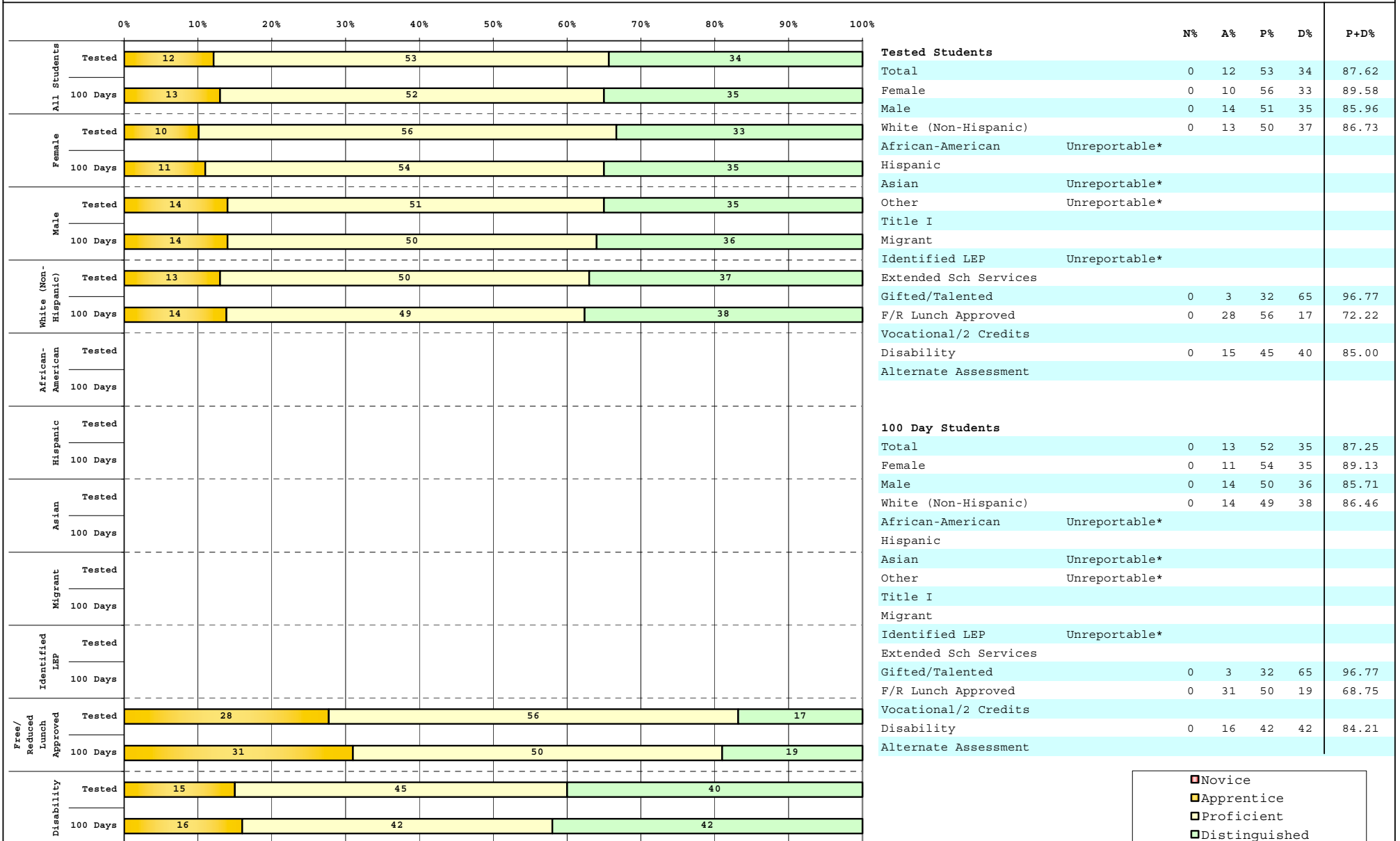


The horizontal bar represents the percent of students scoring at a performance level within a particular year. Percentages may not sum to 100% due to rounding.



2008-2009
INTERIM PERFORMANCE REPORT
SOCIAL STUDIES DISAGGREGATION
Performance Level Percents

School: Clays Mill Elementary School
 District: Fayette County
 Code: 165120
 Grade: 05



Percentage may not sum to 100% due to rounding. 'Unreportable*' indicates subpopulations with fewer than 10 students or subpopulations where all students score at the same performance level.



2008-2009
INTERIM PERFORMANCE REPORT
SOCIAL STUDIES CORE CONTENT

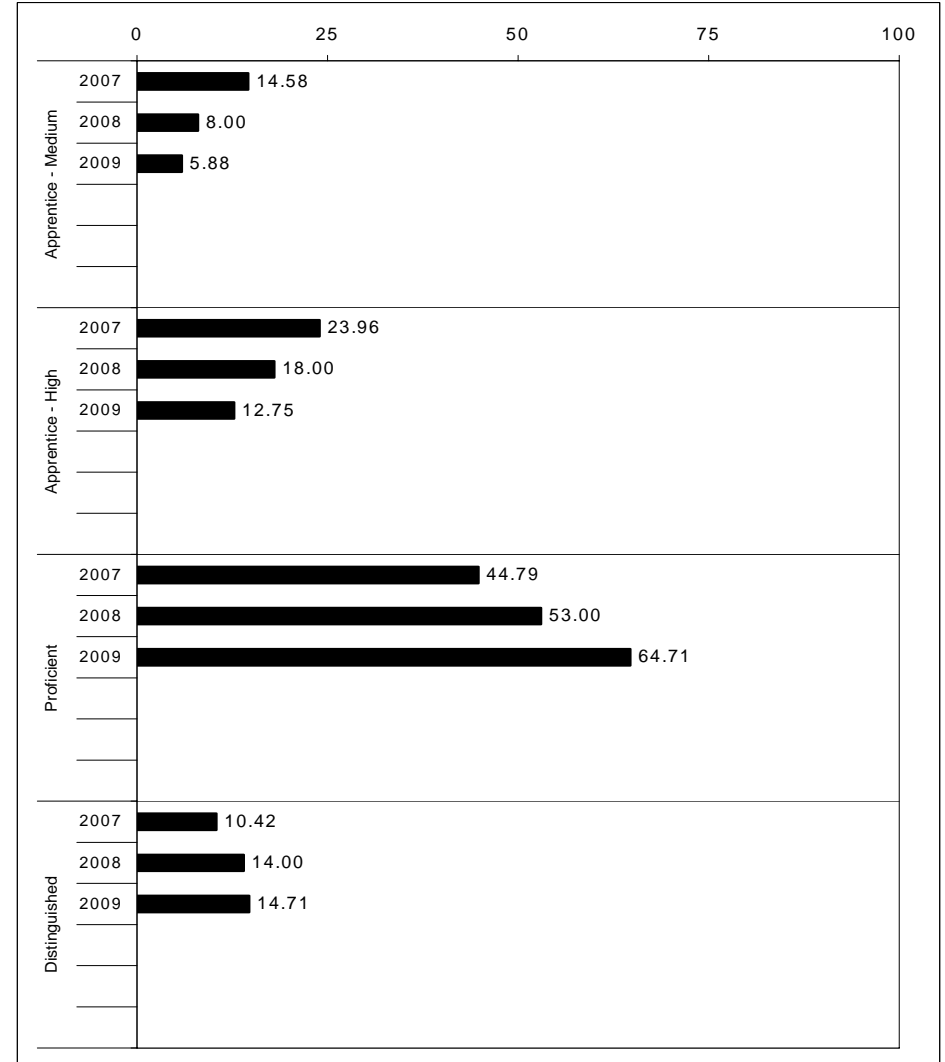
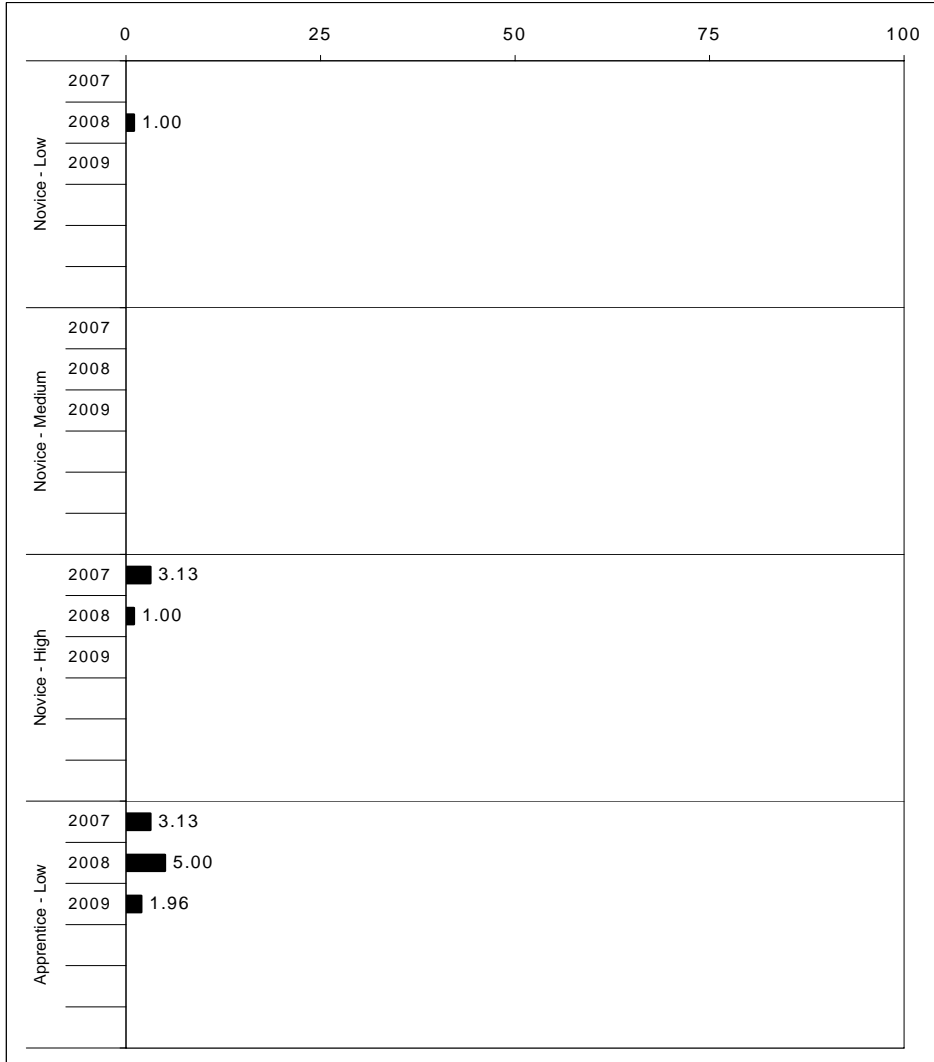
School: Clays Mill Elementary School
 District: Fayette County
 Code: 165120
 Grade: 05

	No. Items	No. Observations	SCHOOL								STATE								School -State Mean
			Percents						Mean	Std. Err.	Percents						Mean		
			B	0	1	2	3	4					No. Observations	B	0	1		2	3
OPEN RESPONSE																			
1.x.x - Government & Civics	2	118	0	1	19	52	25	3	2.1	0.1	56,903	0	5	37	45	10	2	1.7	0.4
2.x.x - Cultures & Societies	1	20	0	0	5	85	10	0	2.1	0.2	8,151	0	4	21	56	15	4	1.9	0.2
3.x.x - Economics	1	102	0	1	22	57	15	6	2.0	0.1	48,828	0	11	33	41	12	3	1.6	0.4
4.x.x - Geography	2	39	0	5	18	62	15	0	1.9	0.2	16,077	0	9	32	39	17	3	1.7	0.2
5.x.x - Historical Perspective	3	129	0	0	29	57	12	2	1.9	0.1	65,353	0	7	35	46	10	2	1.7	0.2
MULTIPLE CHOICE																			
			Correct	Incorrect	Omit/Mult							Correct	Incorrect	Omit/Mult					
1.x.x - Government & Civics	14	665	74	26	0	0.74	0.02	317,571	66	34	0	0.66	0.08						
2.x.x - Cultures & Societies	11	441	79	22	0	0.78	0.02	211,383	70	30	0	0.69	0.09						
3.x.x - Economics	11	526	85	15	0	0.85	0.02	252,215	73	27	0	0.73	0.12						
4.x.x - Geography	16	785	83	17	0	0.83	0.02	374,337	66	34	0	0.66	0.17						
5.x.x - Historical Perspective	27	1,219	84	16	0	0.84	0.01	586,076	69	31	0	0.69	0.15						



2008-2009
INTERIM PERFORMANCE REPORT
WRITING ON-DEMAND TREND DATA
Performance Level Percents

School: Clays Mill Elementary School
 District: Fayette County
 Code: 165120
 Grade: 05



The horizontal bar represents the percent of students scoring at a performance level within a particular year. Percentages may not sum to 100% due to rounding.



2008-2009
INTERIM PERFORMANCE REPORT
WRITING ON-DEMAND DISAGGREGATION
Performance Level Percents

School: Clays Mill Elementary School
 District: Fayette County
 Code: 165120
 Grade: 05

		0%	10%	20%	30%	40%	50%	60%	70%	80%	90%	100%	N%	A%	P%	D%	P+D%	
All Students	Tested												Tested Students					
	100 Days												Total	0	21	65	14	79.05
Female	Tested												Female	0	8	73	19	91.67
	100 Days												Male	0	32	58	11	68.42
Male	Tested												White (Non-Hispanic)	0	18	67	14	81.63
	100 Days												African-American	Unreportable*				
White (Non-Hispanic)	Tested												Hispanic	Unreportable*				
	100 Days												Asian	Unreportable*				
African-American	Tested												Other	Unreportable*				
	100 Days												Title I					
Hispanic	Tested												Migrant					
	100 Days												Identified LEP	Unreportable*				
Asian	Tested												Extended Sch Services					
	100 Days												Gifted/Talented	0	0	71	29	100.00
Migrant	Tested												F/R Lunch Approved	0	44	50	6	55.56
	100 Days												Vocational/2 Credits					
Identified LEP	Tested												Disability	0	20	80	0	80.00
	100 Days												Alternate Assessment					
Free/Reduced Lunch Approved	Tested												100 Day Students					
	100 Days												Total	0	21	65	15	79.41
Disability	Tested												Female	0	9	72	20	91.30
	100 Days												Male	0	30	59	11	69.64
													White (Non-Hispanic)	0	19	67	15	81.25
													African-American	Unreportable*				
													Hispanic	Unreportable*				
													Asian	Unreportable*				
													Other	Unreportable*				
													Title I					
													Migrant					
													Identified LEP	Unreportable*				
													Extended Sch Services					
													Gifted/Talented	0	0	71	29	100.00
													F/R Lunch Approved	0	44	50	6	56.25
													Vocational/2 Credits					
													Disability	0	16	84	0	84.21
													Alternate Assessment					

■	Novice
■	Apprentice
■	Proficient
■	Distinguished

Percentage may not sum to 100% due to rounding. 'Unreportable*' indicates subpopulations with fewer than 10 students or subpopulations where all students score at the same performance level.



2008-2009
INTERIM PERFORMANCE REPORT
WRITING ON-DEMAND CORE CONTENT

School: Clays Mill Elementary School
 District: Fayette County
 Code: 165120
 Grade: 05

WRITING PROMPT	SCHOOL											STATE											School	
	No. Observations	Percents										Mean	Percents										Mean	-State Mean
	B	0	1	2	3	4	5	6	7	8	Mean	B	0	1	2	3	4	5	6	7	8	Mean		
Inform																								
1.X.X - Content	36	0	0	0	0	3	22	39	33	3	0	5.11	0	1	1	9	9	34	18	21	4	2	4.43	0.68
2.X.X - Structure	36	0	0	0	0	6	39	25	28	3	0	4.83	0	1	2	9	10	35	19	19	3	1	4.33	0.50
3.X.X - Convention	36	0	0	0	0	3	36	31	28	3	0	4.92	0	0	0	12	11	34	19	19	3	1	4.38	0.54
Narrate for a purpose																								
1.X.X - Content	32	0	0	0	0	6	13	41	31	3	6	5.31	0	1	1	10	9	36	18	21	3	1	4.35	0.96
2.X.X - Structure	32	0	0	0	0	3	22	34	31	3	6	5.28	0	1	2	10	10	37	17	19	3	1	4.27	1.01
3.X.X - Convention	32	0	0	0	0	0	25	34	31	3	6	5.31	0	0	0	12	10	36	18	19	3	1	4.33	0.98
Persuade																								
1.X.X - Content	34	0	0	0	0	6	29	21	32	0	12	5.26	0	1	1	8	8	33	19	21	5	3	4.50	0.76
2.X.X - Structure	34	0	0	0	3	15	24	18	29	0	12	5.03	0	2	2	9	10	33	19	20	5	2	4.42	0.61
3.X.X - Convention	34	0	0	0	6	9	24	21	29	3	9	5.03	0	0	0	11	10	32	19	20	5	2	4.50	0.53

MULTIPLE CHOICE	No. Items	SCHOOL						STATE						School
		No. Observations	Percents			Mean	Std. Err.	No. Observations	Percents			Mean	-State Mean	
		Correct	Incorrect	Omit/Mult				Correct	Incorrect	Omit/Mult				
4.x.x - Writing Process	52	1,224	79	21	0	0.79	0.01	585,936	73	27	0	0.73	0.06	
4.10.x - Revising	16	265	73	27	0	0.73	0.03	130,317	66	34	0	0.66	0.07	
4.11.x - Editing	36	959	81	19	0	0.81	0.01	455,619	75	24	0	0.75	0.06	