



Interim Performance Report

In March 2009, the Kentucky General Assembly passed Senate Bill 1 (SB1) that was subsequently signed into law by the Governor. SB1 calls for a significant overhaul of the state's assessment and accountability system. The new assessment system begins in the spring of 2012. The school years of 2008-2009, 2009-2010 and 2010-2011 are described in SB1 as an interim period. This three-year period allows Kentucky to develop the new assessment system and to carry on state and federal testing requirements.

The Interim Performance Report includes the Kentucky Core Content Test (KCCT) in Reading (grades 3-8 and 10), Mathematics (grades 3-8 and 11), Science (grades 4, 7 and 11), Social Studies (grades 5, 8 and 11) and Writing On-Demand (grades 5, 8 and 12). The KCCT is based on the Kentucky Core Content for Assessment (Version 4.1) and contains multiple choice and open response questions. The Writing On-Demand test uses writing prompts that require students to craft a piece of writing in a 60 minute period.

The KCCT is developed under the direction of content advisory committees of Kentucky educators who draft, review and select test questions. All test items are reviewed by a bias review committee to enhance the fairness of items for all Kentucky students.

The KCCT continues to fulfill the requirements of the federal statute known as the No Child Left Behind Act of 2001. A separate accountability report for No Child Left Behind (NCLB) is published by the Kentucky Department of Education.

The Interim Performance Report focuses entirely on the five state-required content areas and provides data for schools or districts. The data in this report is not used directly for state accountability; although, these results can fulfill the requirements of Senate Bill 168 from 2002 and may be used by schools or districts for their own local accountability needs.

Performance standards are based on descriptions of Novice, Apprentice, Proficient and Distinguished (NAPD) student performance levels specific to the content area and grade being assessed. The performance standards, in conjunction with Kentucky's Core Content for Assessment, should allow instruction to better focus on the content area to be taught and on how well students must demonstrate achievement in each content area.

Reporting Changes for 2009

Based on SB1, Kentucky will not be reporting state accountability and academic indices as in the past. The report does have several familiar pages with performance level (NAPD) trend, core content and disaggregation data per content area. Districts and schools will still see distributions of how students scored in the Novice (with sublevels), Apprentice (with sublevels), Proficient and Distinguished performance levels.

Confidentiality Changes

Due to federal regulations around the Family Education Rights and Privacy Act (FERPA), the numbers of students have been removed. Though there is a need to report as much data as possible, there is also a paramount need to maintain the confidential aspects of individual scores. When scores are reported in what is commonly called "small cells" where very few students may be categorized, there is the possibility of revealing individual scores when numbers are reported. Numbers are reported to each district in a confidential report that accompanies the public Interim Performance Report.

**2008-2009
INTERIM PERFORMANCE REPORT**

School: Cassidy Elementary School
District: Fayette County
Code: 165032
Grade: PRIMARY-05

CONTENTS OF THIS REPORT

Introduction	1
Academic Trend Data	
Reading Results	2-8
Mathematics Results	9-15
Science Results	16-18
Social Studies Results	19-21
Writing Results	22-24

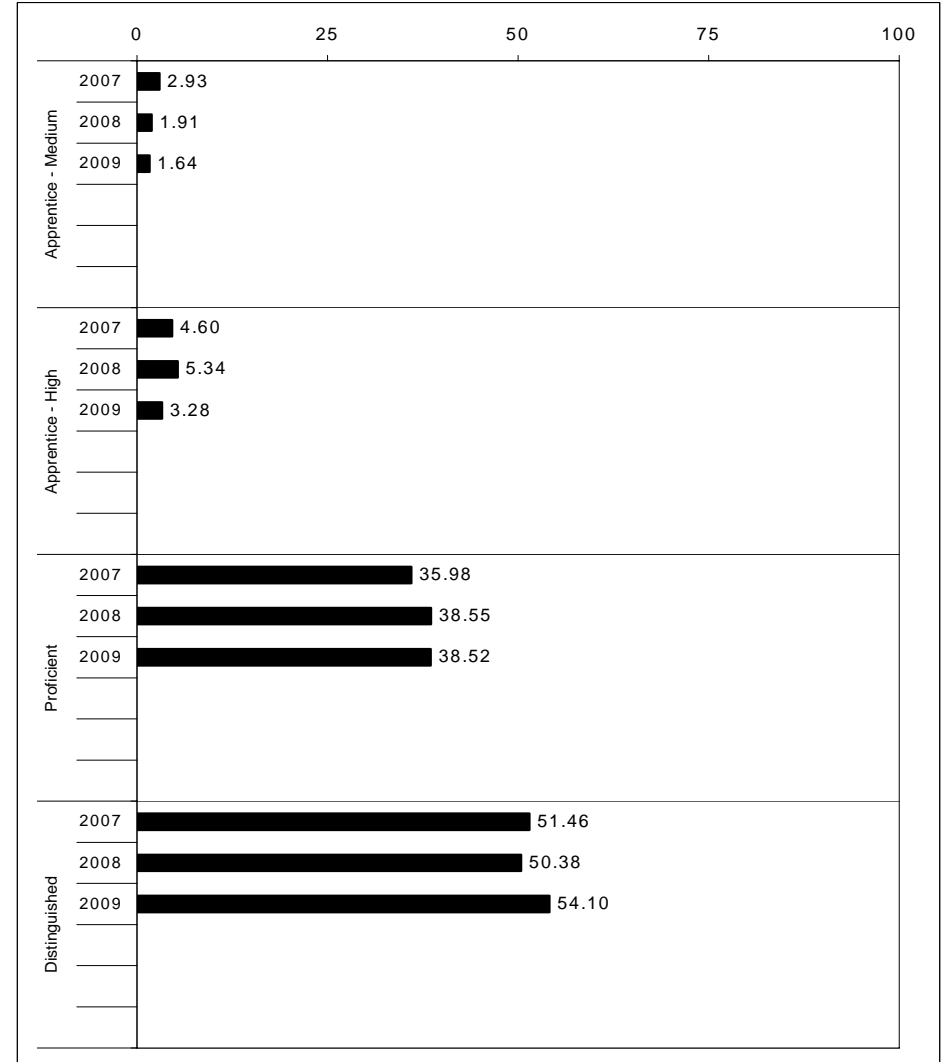
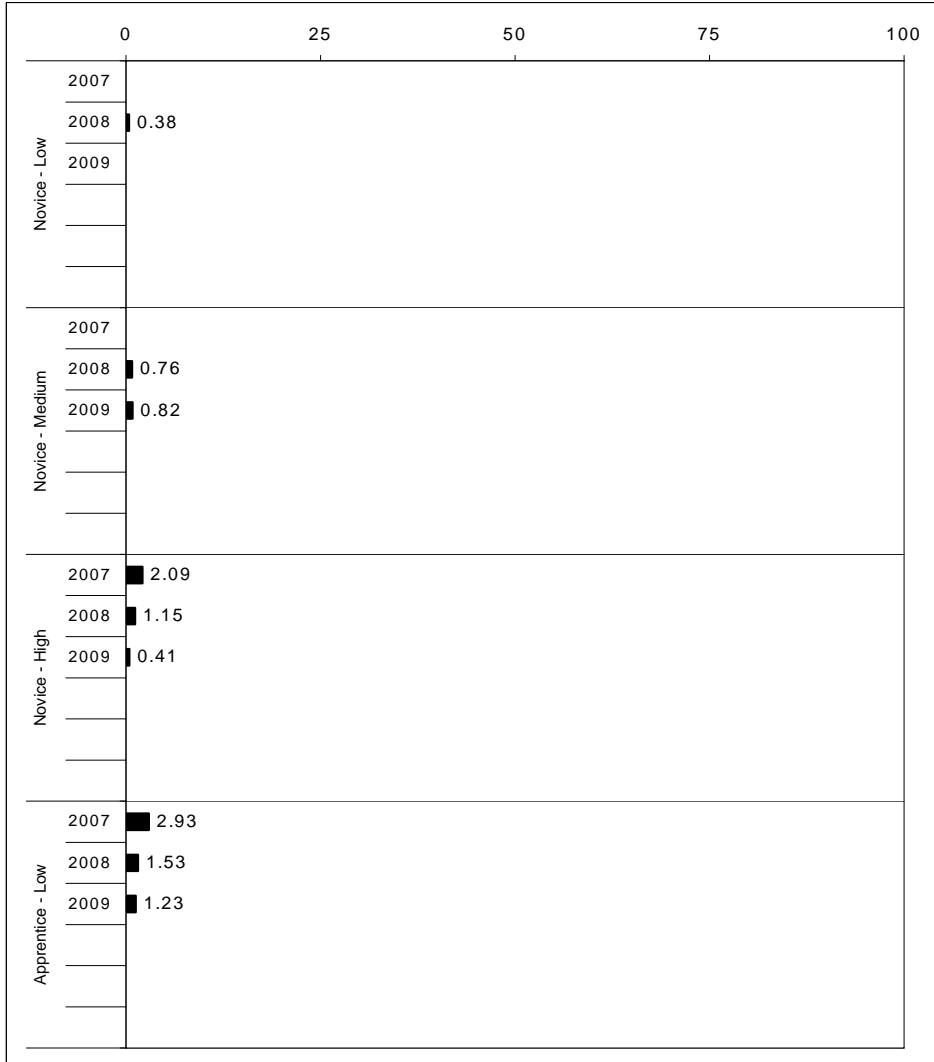
For more information, refer to the 2009 Interim Assessment Interpretative Guide on the Kentucky Department of Education Web site (www.education.ky.gov).





2008-2009
INTERIM PERFORMANCE REPORT
READING TREND DATA
Performance Level Percents

School: Cassidy Elementary School
 District: Fayette County
 Code: 165032
 Grade: ELEMENTARY



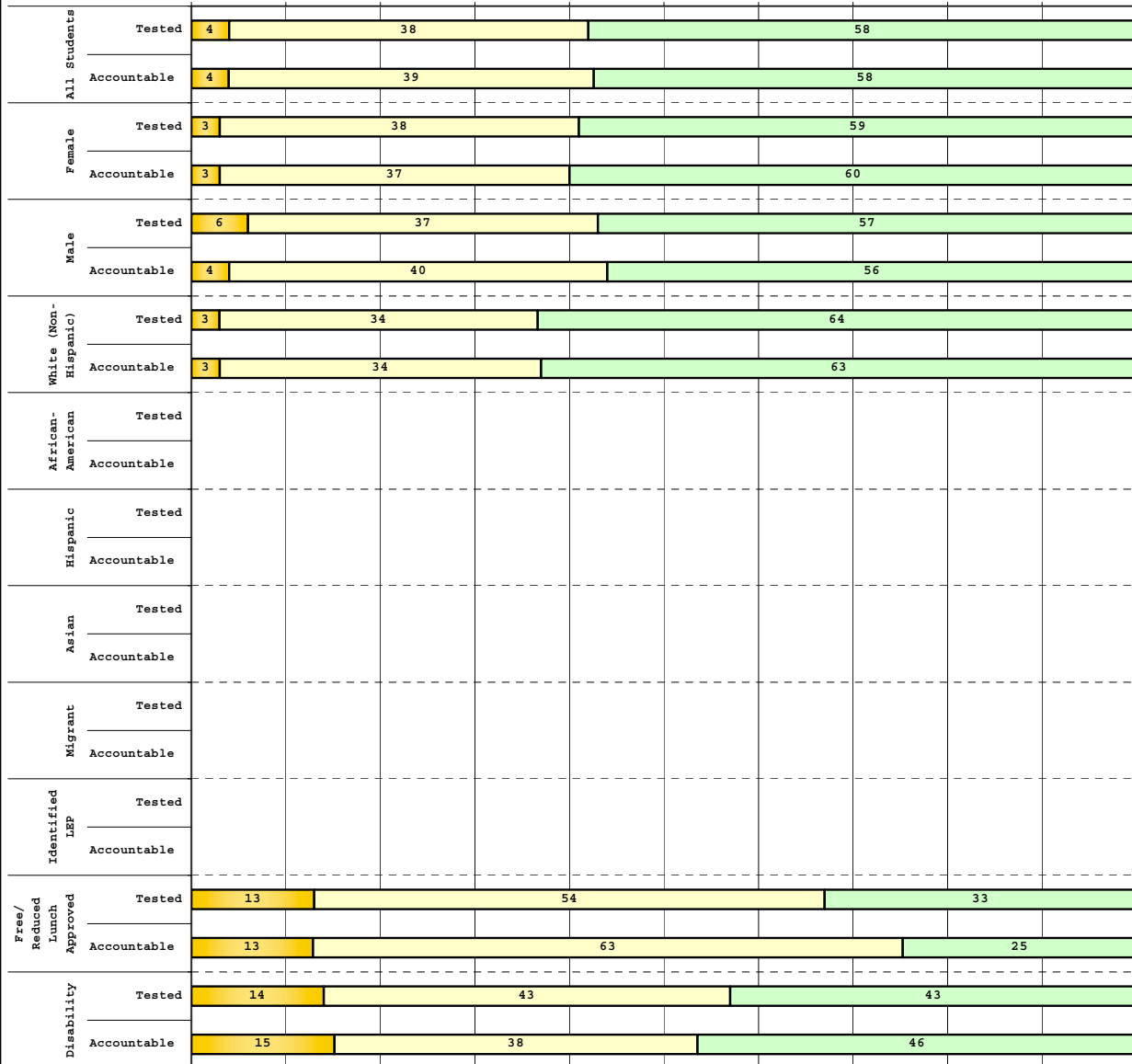
The horizontal bar represents the percent of students scoring at a performance level within a particular year. Percentages may not sum to 100% due to rounding.



**2008-2009
INTERIM PERFORMANCE REPORT
READING DISAGGREGATION
Performance Level Percents**

School: Cassidy Elementary School
District: Fayette County
Code: 165032
Grade: 03

0% 10% 20% 30% 40% 50% 60% 70% 80% 90% 100%



Tested Students

	N%	A%	P%	D%	P+D%
Total	0	4	38	58	95.56
Female	0	3	38	59	97.44
Male	0	6	37	57	94.12
White (Non-Hispanic)	0	3	34	64	97.30
African-American	Unreportable*				
Hispanic	Unreportable*				
Asian	Unreportable*				
Other	Unreportable*				
Title I					
Migrant					
Identified LEP	Unreportable*				
Extended Sch Services	Unreportable*				
Gifted/Talented	0	0	14	86	100.00
F/R Lunch Approved	0	13	54	33	87.50
Vocational/2 Credits					
Disability	0	14	43	43	85.71
Alternate Assessment					

NCLB Accountable Students

	N%	A%	P%	D%	P+D%
Total	0	4	39	58	96.25
Female	0	3	37	60	97.14
Male	0	4	40	56	95.56
White (Non-Hispanic)	0	3	34	63	97.14
African-American	Unreportable*				
Hispanic	Unreportable*				
Asian	Unreportable*				
Other					
Title I					
Migrant					
Identified LEP	Unreportable*				
Extended Sch Services	Unreportable*				
Gifted/Talented	0	0	15	85	100.00
F/R Lunch Approved	0	13	63	25	87.50
Vocational/2 Credits					
Disability	0	15	38	46	84.62
Alternate Assessment					

 Novice
 Apprentice
 Proficient
 Distinguished

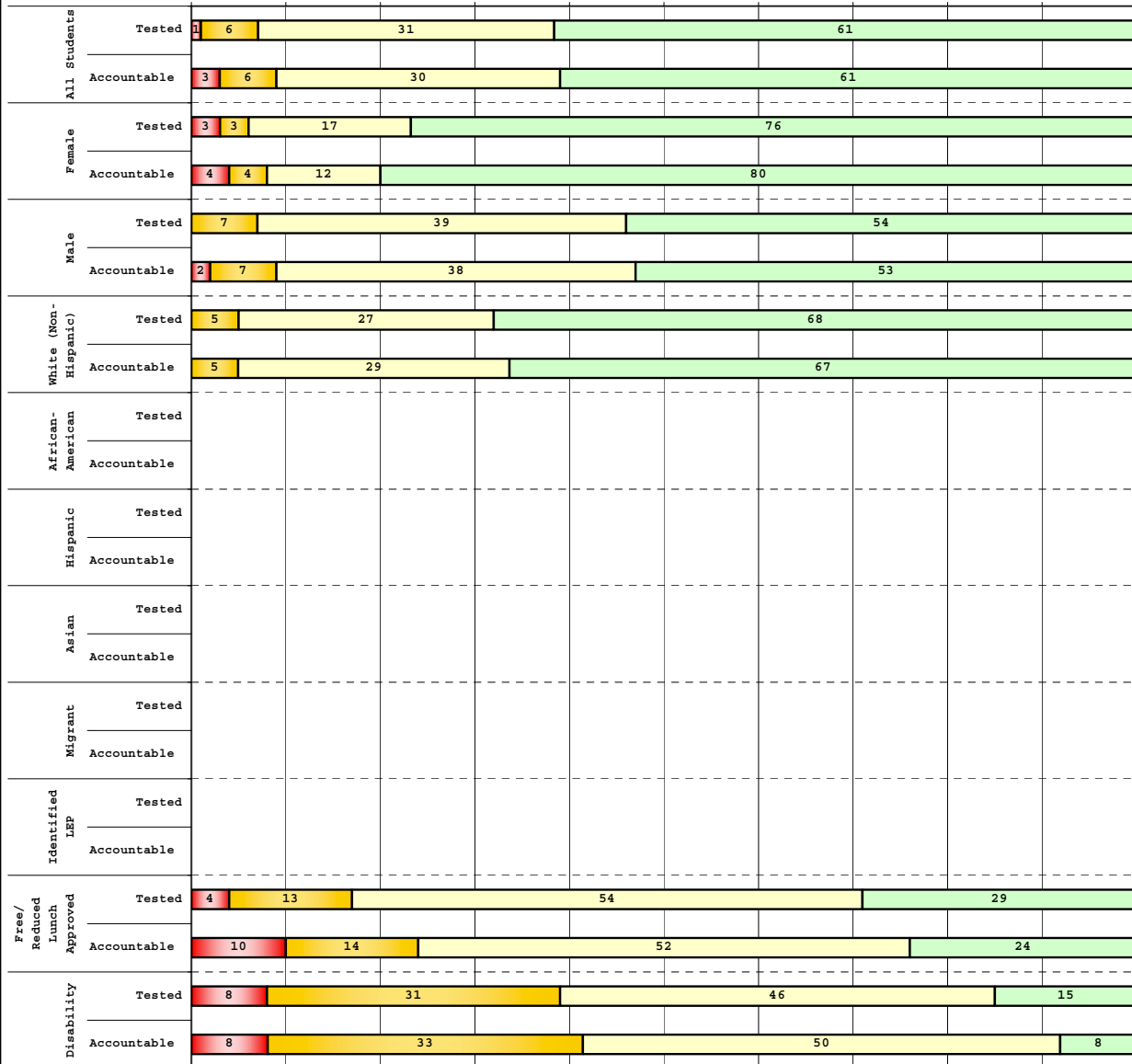
Percentage may not sum to 100% due to rounding. 'Unreportable*' indicates subpopulations with fewer than 10 students or subpopulations where all students score at the same performance level.



**2008-2009
INTERIM PERFORMANCE REPORT
READING DISAGGREGATION
Performance Level Percents**

School: Cassidy Elementary School
District: Fayette County
Code: 165032
Grade: 04

0% 10% 20% 30% 40% 50% 60% 70% 80% 90% 100%



Tested Students

	N%	A%	P%	D%	P+D%
Total	1	6	31	61	92.77
Female	3	3	17	76	93.10
Male	0	7	39	54	92.59
White (Non-Hispanic)	0	5	27	68	95.24
African-American	Unreportable*				
Hispanic	Unreportable*				
Asian	Unreportable*				
Other	Unreportable*				
Title I					
Migrant					
Identified LEP	Unreportable*				
Extended Sch Services	0	7	73	20	93.33
Gifted/Talented	Unreportable*				
F/R Lunch Approved	4	13	54	29	83.33
Vocational/2 Credits					
Disability	8	31	46	15	61.54
Alternate Assessment	Unreportable*				
NCLB Accountable Students					
Total	3	6	30	61	91.25
Female	4	4	12	80	92.00
Male	2	7	38	53	90.91
White (Non-Hispanic)	0	5	29	67	95.24
African-American	Unreportable*				
Hispanic	Unreportable*				
Asian	Unreportable*				
Other	Unreportable*				
Title I					
Migrant					
Identified LEP	Unreportable*				
Extended Sch Services	0	7	71	21	92.86
Gifted/Talented	Unreportable*				
F/R Lunch Approved	10	14	52	24	76.19
Vocational/2 Credits					
Disability	8	33	50	8	58.33
Alternate Assessment	Unreportable*				

■ Novice
■ Apprentice
■ Proficient
■ Distinguished

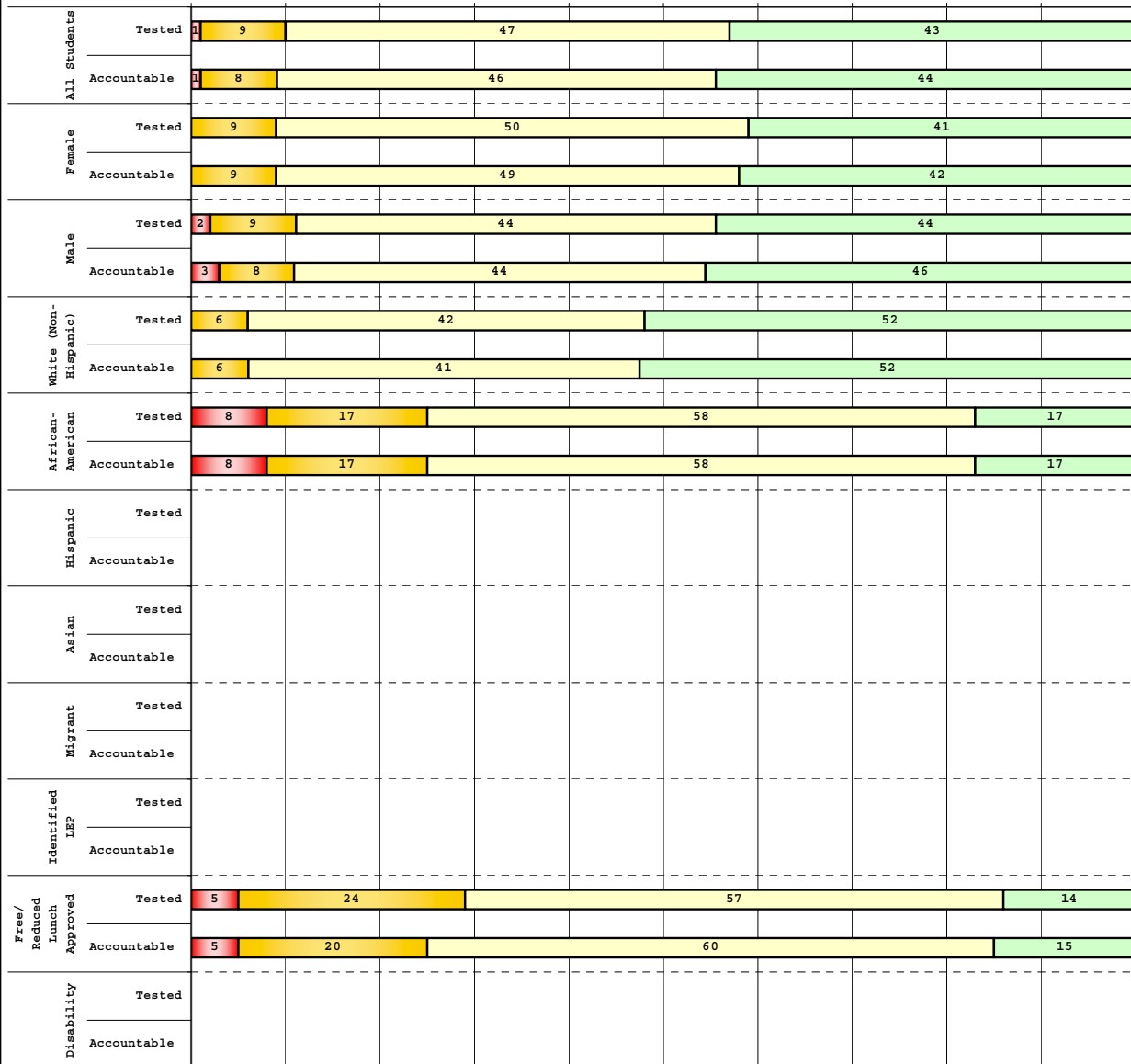
Percentage may not sum to 100% due to rounding. 'Unreportable*' indicates subpopulations with fewer than 10 students or subpopulations where all students score at the same performance level.



**2008-2009
INTERIM PERFORMANCE REPORT
READING DISAGGREGATION
Performance Level Percents**

School: Cassidy Elementary School
District: Fayette County
Code: 165032
Grade: 05

0% 10% 20% 30% 40% 50% 60% 70% 80% 90% 100%

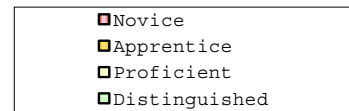


Tested Students

	N%	A%	P%	D%	P+D%
Total	1	9	47	43	89.89
Female	0	9	50	41	91.30
Male	2	9	44	44	88.37
White (Non-Hispanic)	0	6	42	52	93.94
African-American	8	17	58	17	75.00
Hispanic	Unreportable*				
Asian	Unreportable*				
Other	Unreportable*				
Title I					
Migrant					
Identified LEP	Unreportable*				
Extended Sch Services	9	27	64	0	63.64
Gifted/Talented	0	0	26	74	100.00
F/R Lunch Approved	5	24	57	14	71.43
Vocational/2 Credits					
Disability	Unreportable*				
Alternate Assessment					

NCLB Accountable Students

	N%	A%	P%	D%	P+D%
Total	1	8	46	44	90.48
Female	0	9	49	42	91.11
Male	3	8	44	46	89.74
White (Non-Hispanic)	0	6	41	52	93.65
African-American	8	17	58	17	75.00
Hispanic	Unreportable*				
Asian					
Other	Unreportable*				
Title I					
Migrant					
Identified LEP	Unreportable*				
Extended Sch Services	9	27	64	0	63.64
Gifted/Talented	0	0	26	74	100.00
F/R Lunch Approved	5	20	60	15	75.00
Vocational/2 Credits					
Disability	Unreportable*				
Alternate Assessment					



Percentage may not sum to 100% due to rounding. 'Unreportable*' indicates subpopulations with fewer than 10 students or subpopulations where all students score at the same performance level.



2008-2009
INTERIM PERFORMANCE REPORT
READING CORE CONTENT

School: Cassidy Elementary School
 District: Fayette County
 Code: 165032
 Grade: 03

	No. Items	No. Observations	SCHOOL							Mean	Std. Err.	No. Observations	STATE							Mean	School -State Mean
			B	0	1	2	3	4	Percents				B	0	1	2	3	4	Percents		
OPEN RESPONSE																					
2.0.x - Developing Understanding	2	160	0	3	16	40	34	7	2.3	0.1	100,212	0	10	30	44	14	2	1.7	0.6		
3.0.x - Interpreting Text	2	160	0	3	16	40	34	7	2.3	0.1	100,212	0	10	30	44	14	2	1.7	0.6		
MULTIPLE CHOICE																					
1.0.x - Forming a Foundation	32	627	94	6	1				0.94	0.02	392,589	83	17	0				0.83	0.11		
2.0.x - Developing Understanding	89	1,596	91	9	0				0.91	0.01	993,477	80	20	0				0.80	0.11		
3.0.x - Interpreting Text	31	749	91	10	0				0.91	0.02	468,115	77	23	0				0.77	0.14		
5.0.x - Critical Stance	15	322	96	4	0				0.96	0.02	208,359	79	21	0				0.79	0.17		



2008-2009
INTERIM PERFORMANCE REPORT
READING CORE CONTENT

School: Cassidy Elementary School
 District: Fayette County
 Code: 165032
 Grade: 04

	No. Items	No. Observations	SCHOOL								Mean	Std. Err.	No. Observations	STATE						Mean	School -State Mean
			B	0	1	2	3	4	B	0				1	2	3	4				
OPEN RESPONSE																					
2.0.x - Developing Understanding	5	131	0	1	7	32	34	26	2.8	0.1	81,849	0	3	24	52	18	3	1.9	0.9		
3.0.x - Interpreting Text	6	207	0	0	5	26	41	28	2.9	0.1	131,199	0	4	22	45	23	5	2.0	0.9		
MULTIPLE CHOICE																					
1.0.x - Forming a Foundation	34	642	83	17	0				0.83	0.02	401,452	72	28	0				0.71	0.12		
2.0.x - Developing Understanding	76	1,377	85	15	0				0.85	0.01	868,422	73	27	0				0.73	0.12		
3.0.x - Interpreting Text	29	436	87	13	0				0.87	0.02	278,648	79	21	0				0.79	0.08		
5.0.x - Critical Stance	9	245	87	14	0				0.87	0.03	155,704	74	26	0				0.74	0.13		



**2008-2009
INTERIM PERFORMANCE REPORT
READING CORE CONTENT**

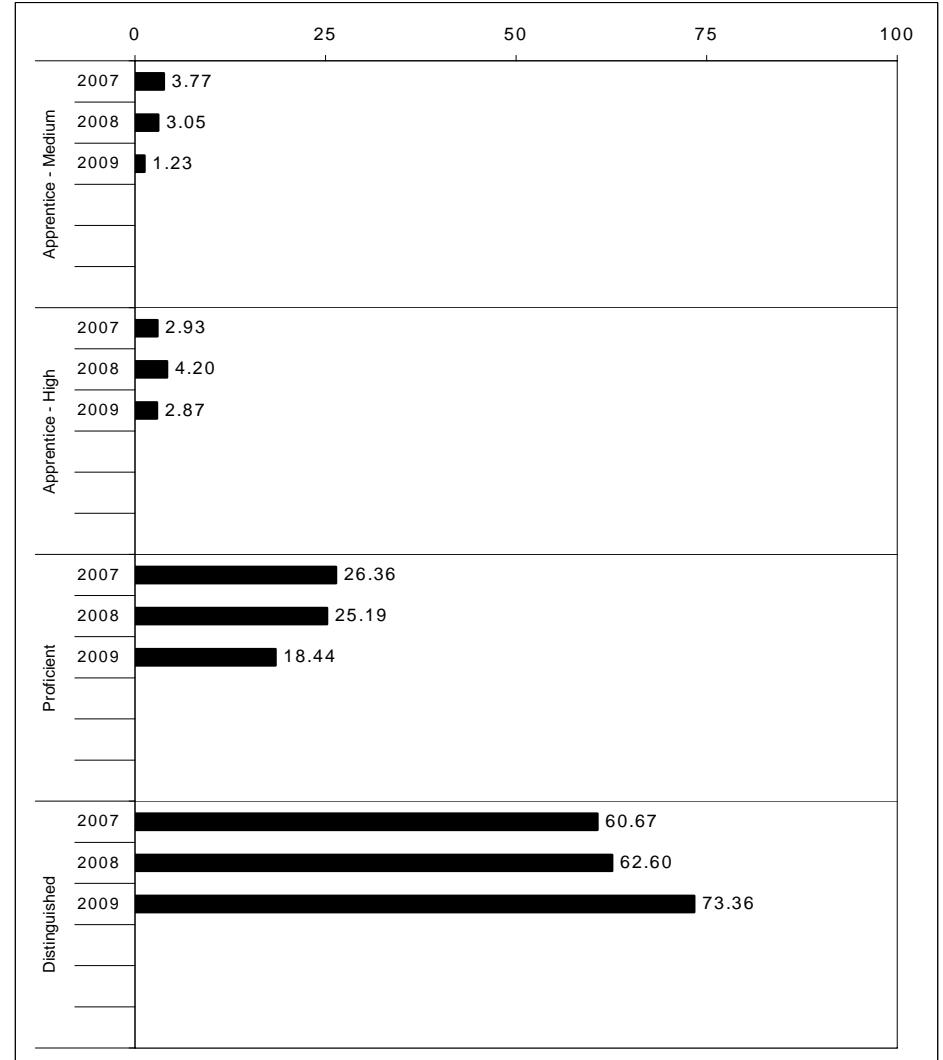
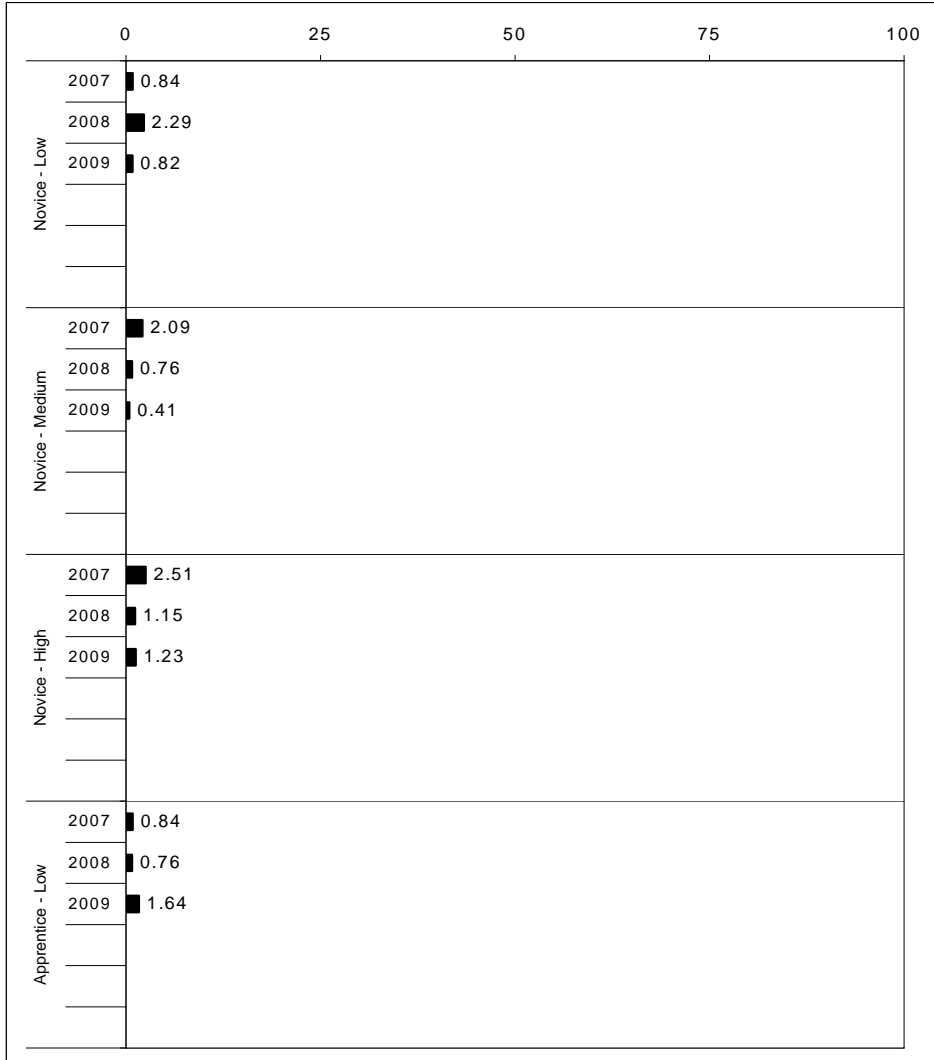
School: Cassidy Elementary School
 District: Fayette County
 Code: 165032
 Grade: 05

	No. Items	No. Observations	SCHOOL								Mean	Std. Err.	No. Observations	STATE						Mean	School -State Mean
			B	0	1	2	3	4	B	0				1	2	3	4				
OPEN RESPONSE																					
2.0.x - Developing Understanding	6	158	0	3	9	35	36	16	2.5	0.1	89,507	0	5	23	48	20	5	2.0	0.5		
3.0.x - Interpreting Text	6	219	0	2	9	44	34	11	2.4	0.1	130,403	0	5	21	50	19	4	2.0	0.4		
MULTIPLE CHOICE																					
1.0.x - Forming a Foundation	28	452	85	16	0				0.85	0.02	268,187	74	26	0				0.74	0.11		
2.0.x - Developing Understanding	71	1,398	88	12	0				0.88	0.01	823,068	80	20	0				0.80	0.08		
3.0.x - Interpreting Text	27	596	89	11	0				0.89	0.02	341,653	81	19	0				0.81	0.08		
5.0.x - Critical Stance	17	531	87	13	0				0.87	0.02	300,671	75	25	0				0.75	0.12		



2008-2009
INTERIM PERFORMANCE REPORT
MATHEMATICS TREND DATA
Performance Level Percents

School: Cassidy Elementary School
 District: Fayette County
 Code: 165032
 Grade: ELEMENTARY



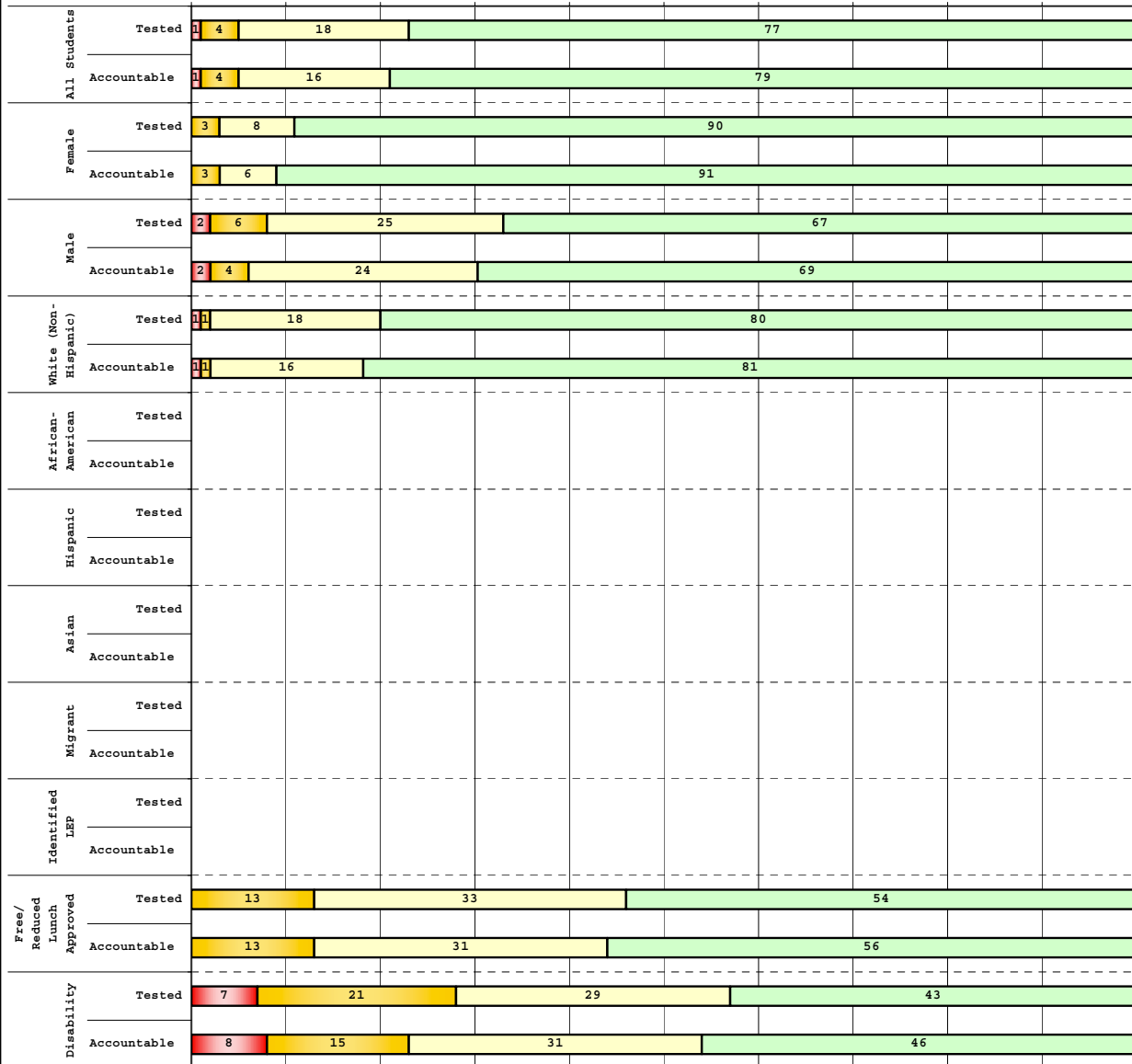
The horizontal bar represents the percent of students scoring at a performance level within a particular year. Percentages may not sum to 100% due to rounding.



**2008-2009
INTERIM PERFORMANCE REPORT
MATHEMATICS DISAGGREGATION
Performance Level Percents**

School: Cassidy Elementary School
District: Fayette County
Code: 165032
Grade: 03

0% 10% 20% 30% 40% 50% 60% 70% 80% 90% 100%



Category	N%	A%	P%	D%	P+D%
Tested Students					
Total	1	4	18	77	94.44
Female	0	3	8	90	97.44
Male	2	6	25	67	92.16
White (Non-Hispanic)	1	1	18	80	97.30
African-American	Unreportable*				
Hispanic	Unreportable*				
Asian	Unreportable*				
Other	Unreportable*				
Title I					
Migrant					
Identified LEP	Unreportable*				
Extended Sch Services	Unreportable*				
Gifted/Talented	Unreportable*				
F/R Lunch Approved	0	13	33	54	87.50
Vocational/2 Credits					
Disability	7	21	29	43	71.43
Alternate Assessment					
NCLB Accountable Students					
Total	1	4	16	79	95.00
Female	0	3	6	91	97.14
Male	2	4	24	69	93.33
White (Non-Hispanic)	1	1	16	81	97.14
African-American	Unreportable*				
Hispanic	Unreportable*				
Asian	Unreportable*				
Other					
Title I					
Migrant					
Identified LEP	Unreportable*				
Extended Sch Services	Unreportable*				
Gifted/Talented	Unreportable*				
F/R Lunch Approved	0	13	31	56	87.50
Vocational/2 Credits					
Disability	8	15	31	46	76.92
Alternate Assessment					

■ Novice
■ Apprentice
■ Proficient
■ Distinguished

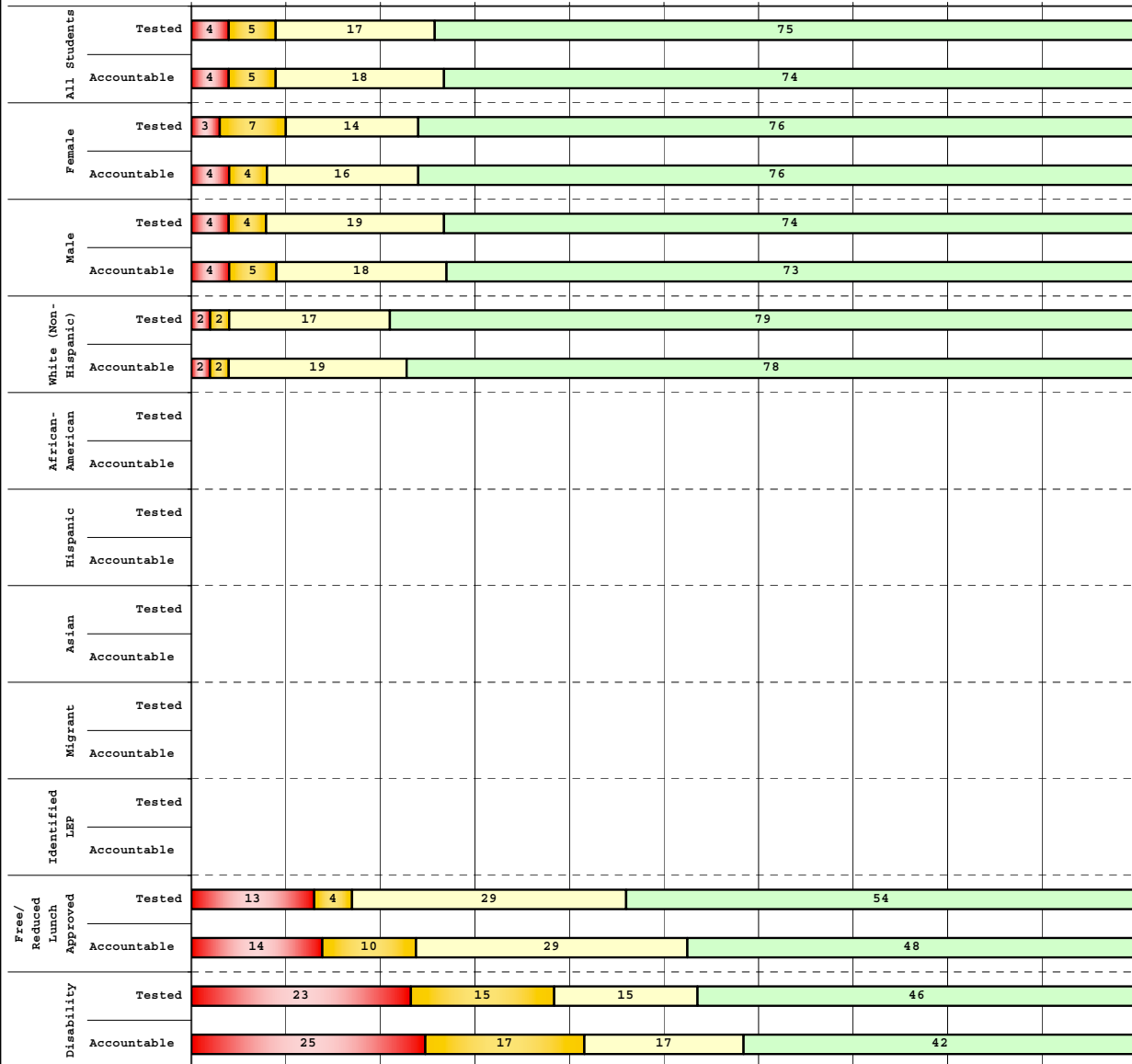
Percentage may not sum to 100% due to rounding. 'Unreportable*' indicates subpopulations with fewer than 10 students or subpopulations where all students score at the same performance level.



2008-2009
INTERIM PERFORMANCE REPORT
MATHEMATICS DISAGGREGATION
Performance Level Percents

School: Cassidy Elementary School
 District: Fayette County
 Code: 165032
 Grade: 04

0% 10% 20% 30% 40% 50% 60% 70% 80% 90% 100%



Tested Students

	N%	A%	P%	D%	P+D%
Total	4	5	17	75	91.57
Female	3	7	14	76	89.66
Male	4	4	19	74	92.59
White (Non-Hispanic)	2	2	17	79	96.83
African-American	Unreportable*				
Hispanic	Unreportable*				
Asian	Unreportable*				
Other	Unreportable*				
Title I					
Migrant					
Identified LEP	Unreportable*				
Extended Sch Services	0	7	53	40	93.33
Gifted/Talented	Unreportable*				
F/R Lunch Approved	13	4	29	54	83.33
Vocational/2 Credits					
Disability	23	15	15	46	61.54
Alternate Assessment	Unreportable*				

NCLB Accountable Students

	N%	A%	P%	D%	P+D%
Total	4	5	18	74	91.25
Female	4	4	16	76	92.00
Male	4	5	18	73	90.91
White (Non-Hispanic)	2	2	19	78	96.83
African-American	Unreportable*				
Hispanic	Unreportable*				
Asian	Unreportable*				
Other	Unreportable*				
Title I					
Migrant					
Identified LEP	Unreportable*				
Extended Sch Services	0	7	50	43	92.86
Gifted/Talented	Unreportable*				
F/R Lunch Approved	14	10	29	48	76.19
Vocational/2 Credits					
Disability	25	17	17	42	58.33
Alternate Assessment	Unreportable*				

■	Novice
■	Apprentice
■	Proficient
■	Distinguished

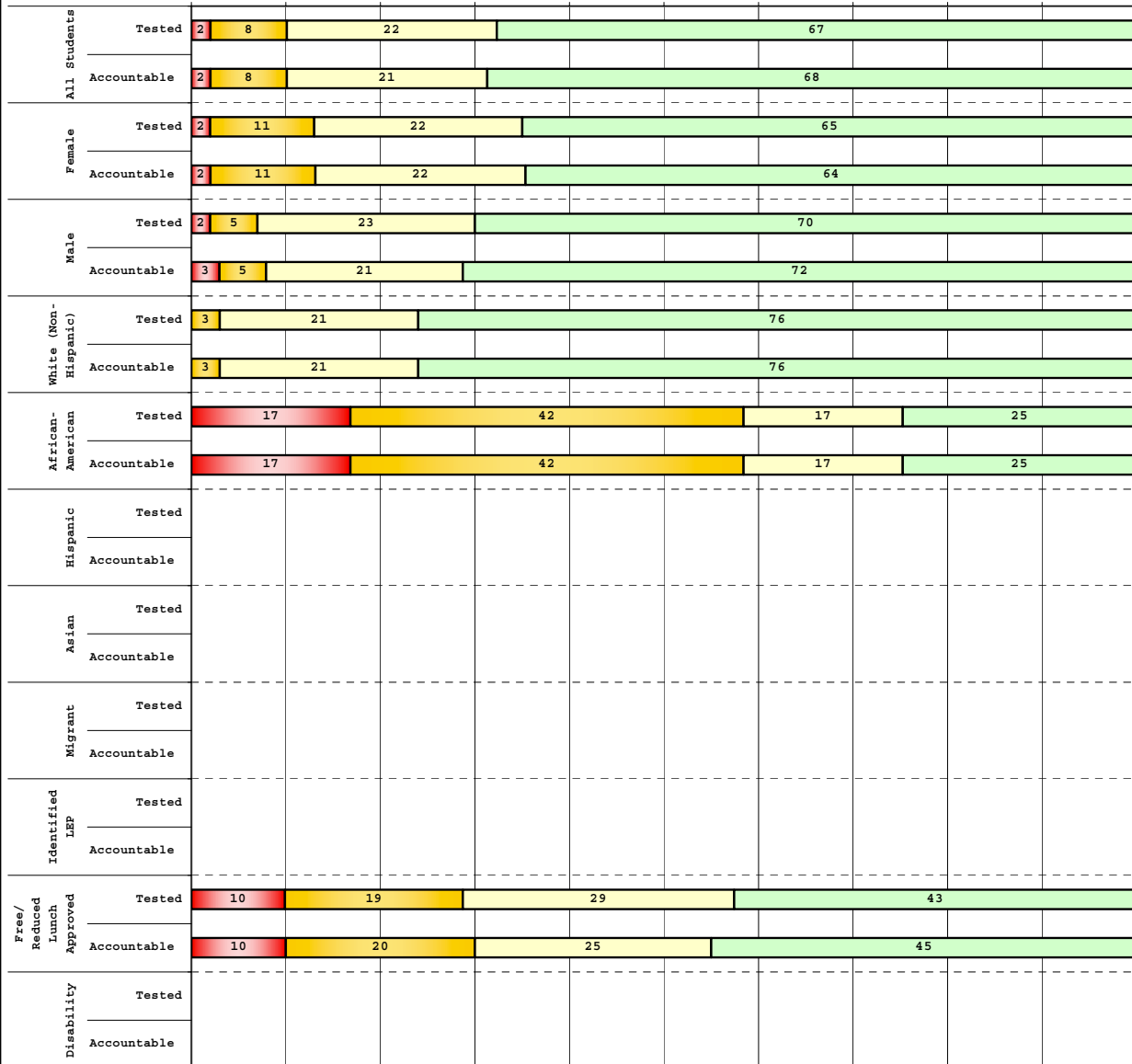
Percentage may not sum to 100% due to rounding. 'Unreportable*' indicates subpopulations with fewer than 10 students or subpopulations where all students score at the same performance level.



**2008-2009
INTERIM PERFORMANCE REPORT
MATHEMATICS DISAGGREGATION
Performance Level Percents**

School: Cassidy Elementary School
District: Fayette County
Code: 165032
Grade: 05

0% 10% 20% 30% 40% 50% 60% 70% 80% 90% 100%



Tested Students

	N%	A%	P%	D%	P+D%
Total	2	8	22	67	89.89
Female	2	11	22	65	86.96
Male	2	5	23	70	93.02
White (Non-Hispanic)	0	3	21	76	96.97
African-American	17	42	17	25	41.67
Hispanic	Unreportable*				
Asian	Unreportable*				
Other	Unreportable*				
Title I					
Migrant					
Identified LEP	Unreportable*				
Extended Sch Services	18	36	18	27	45.45
Gifted/Talented	Unreportable*				
F/R Lunch Approved	10	19	29	43	71.43
Vocational/2 Credits					
Disability	Unreportable*				
Alternate Assessment					

NCLB Accountable Students

	N%	A%	P%	D%	P+D%
Total	2	8	21	68	89.29
Female	2	11	22	64	86.67
Male	3	5	21	72	92.31
White (Non-Hispanic)	0	3	21	76	96.83
African-American	17	42	17	25	41.67
Hispanic	Unreportable*				
Asian					
Other	Unreportable*				
Title I					
Migrant					
Identified LEP	Unreportable*				
Extended Sch Services	18	36	18	27	45.45
Gifted/Talented	Unreportable*				
F/R Lunch Approved	10	20	25	45	70.00
Vocational/2 Credits					
Disability	Unreportable*				
Alternate Assessment					

■ Novice
■ Apprentice
■ Proficient
■ Distinguished

Percentage may not sum to 100% due to rounding. 'Unreportable*' indicates subpopulations with fewer than 10 students or subpopulations where all students score at the same performance level.



2008-2009
INTERIM PERFORMANCE REPORT
MATHEMATICS CORE CONTENT

School: Cassidy Elementary School
 District: Fayette County
 Code: 165032
 Grade: 03

	No. Items	No. Observations	SCHOOL								STATE								School -State Mean
			Percents						Mean	Std. Err.	Percents						Mean		
			B	0	1	2	3	4					No. Observations	B	0	1		2	3
OPEN RESPONSE																			
1.x.x - Number Prop Oper	5	202	0	7	19	30	22	22	2.3	0.1	125,243	0	21	35	26	10	8	1.5	0.8
2.x.x - Measurement	1	11	0	0	9	27	18	45	3.0	0.4	8,325	0	25	5	30	14	25	2.1	0.9
3.x.x - Geometry	2	24	0	4	17	33	8	38	2.6	0.2	16,777	0	8	24	35	13	20	2.1	0.5
4.x.x - Data Analysis & Probabilit	1	80	0	1	8	8	15	69	3.4	0.1	50,106	0	9	13	19	27	32	2.6	0.8
5.x.x - Algebraic Thinking	2	94	0	1	7	6	18	67	3.4	0.1	58,404	0	9	14	19	28	31	2.6	0.8
MULTIPLE CHOICE																			
1.x.x - Number Prop Oper	32	1,288	Correct	Incorrect	Omit/Mult				0.89	0.01	810,106	Correct	Incorrect	Omit/Mult				0.74	0.15
2.x.x - Measurement	7	296	91	9	0				0.91	0.02	183,647	81	18	0				0.81	0.10
3.x.x - Geometry	18	640	92	8	0				0.92	0.01	400,848	85	15	0				0.85	0.07
4.x.x - Data Analysis & Probabilit	8	306	86	14	0				0.86	0.03	192,126	69	31	0				0.69	0.17
5.x.x - Algebraic Thinking	11	350	91	9	0				0.91	0.02	217,089	78	22	0				0.78	0.13



2008-2009
INTERIM PERFORMANCE REPORT
MATHEMATICS CORE CONTENT

School: Cassidy Elementary School
 District: Fayette County
 Code: 165032
 Grade: 04

	No. Items	No. Observations	SCHOOL								STATE								School -State Mean
			Percents						Mean	Std. Err.	Percents						Mean		
			B	0	1	2	3	4					No. Observations	B	0	1		2	3
OPEN RESPONSE																			
1.x.x - Number Prop Oper	4	118	0	4	10	23	18	45	2.9	0.1	73,656	0	17	24	29	19	12	1.9	1.0
2.x.x - Measurement	1	12	0	17	8	0	17	58	2.9	0.4	8,195	0	43	13	10	20	13	1.5	1.4
3.x.x - Geometry	2	92	0	3	10	10	15	62	3.2	0.1	57,352	0	11	20	17	19	33	2.4	0.8
4.x.x - Data Analysis & Probabilit	1	12	0	0	25	25	42	8	2.3	0.3	8,152	0	5	36	29	23	6	1.9	0.4
5.x.x - Algebraic Thinking	2	90	0	2	14	24	31	28	2.7	0.1	57,508	0	5	27	32	25	11	2.1	0.6
MULTIPLE CHOICE																			
1.x.x - Number Prop Oper	31	1,050	Correct	Incorrect	Omit/Mult				0.86	0.01	664,194	Correct	Incorrect	Omit/Mult				0.67	0.19
2.x.x - Measurement	7	220	87	14	0				0.89	0.03	139,170	62	33	0				0.62	0.27
3.x.x - Geometry	14	442	89	11	0				0.92	0.02	278,460	77	23	0				0.77	0.15
4.x.x - Data Analysis & Probabilit	12	479	92	8	0				0.84	0.02	303,394	71	29	0				0.71	0.13
5.x.x - Algebraic Thinking	11	407	84	15	0				0.85	0.02	253,829	69	31	0				0.69	0.16



2008-2009
INTERIM PERFORMANCE REPORT
MATHEMATICS CORE CONTENT

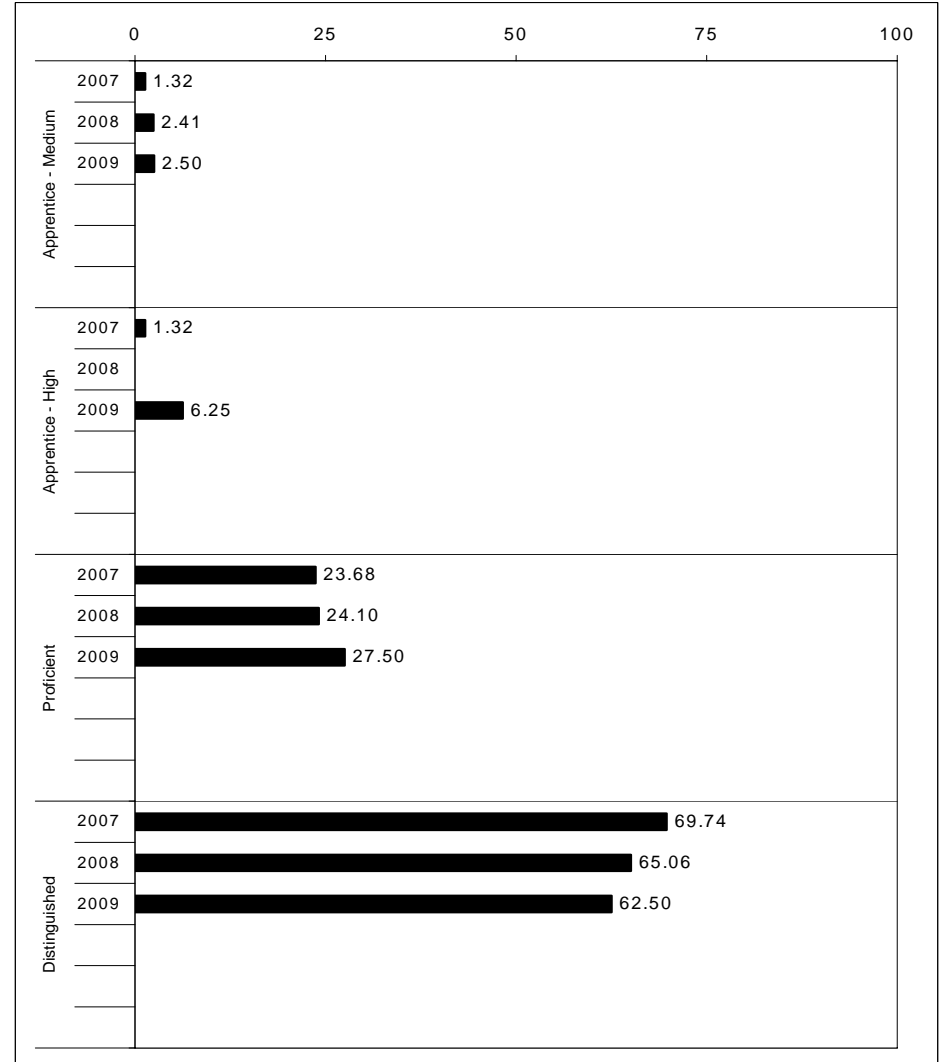
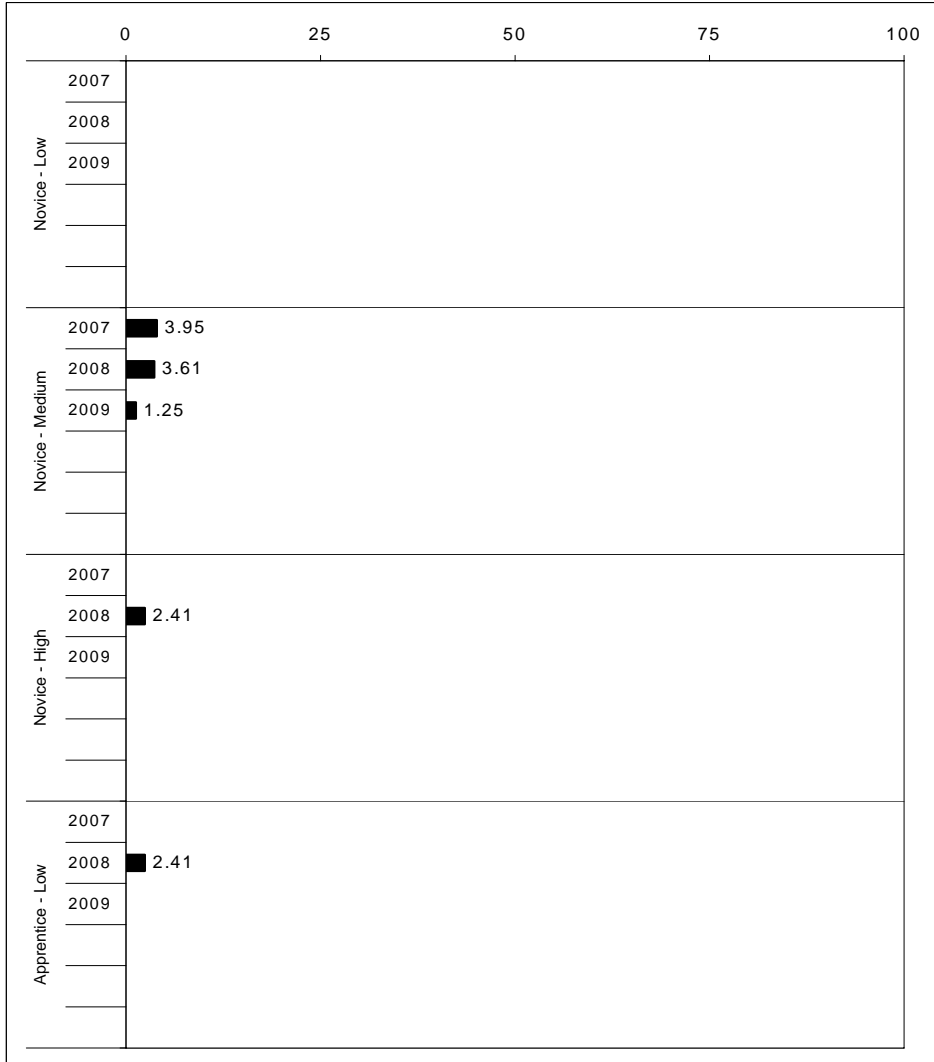
School: Cassidy Elementary School
 District: Fayette County
 Code: 165032
 Grade: 05

	No. Items	No. Observations	SCHOOL								Std. Err.	No. Observations	STATE								School -State Mean
			B	0	1	2	3	4	Mean	B			0	1	2	3	4	Mean			
OPEN RESPONSE																					
1.x.x - Number Prop Oper	4	123	0	0	14	14	15	57	3.2	0.1	73,199	0	8	20	18	25	29	2.5	0.7		
2.x.x - Measurement	1	12	0	0	17	0	33	50	3.2	0.4	8,380	0	37	30	13	10	11	1.3	1.9		
3.x.x - Geometry	2	99	0	4	3	11	46	35	3.1	0.1	56,900	0	6	24	30	26	14	2.2	0.9		
4.x.x - Data Analysis & Probabilit	1	84	0	13	11	12	14	50	2.8	0.2	48,828	0	15	18	15	17	35	2.4	0.4		
5.x.x - Algebraic Thinking	1	18	0	6	0	11	17	67	3.4	0.3	8,005	0	13	15	20	17	35	2.5	0.9		
MULTIPLE CHOICE																					
1.x.x - Number Prop Oper	29	1,104	83	17	0				0.83	0.01	643,144	63	37	0				0.63	0.20		
2.x.x - Measurement	9	270	77	23	0				0.77	0.03	154,489	62	38	0				0.62	0.15		
3.x.x - Geometry	14	477	90	10	0				0.90	0.02	276,516	78	22	0				0.78	0.12		
4.x.x - Data Analysis & Probabilit	11	435	79	21	0				0.79	0.02	252,212	64	36	0				0.64	0.15		
5.x.x - Algebraic Thinking	10	420	85	16	0				0.85	0.02	244,140	65	35	0				0.65	0.20		



2008-2009
INTERIM PERFORMANCE REPORT
SCIENCE TREND DATA
Performance Level Percents

School: Cassidy Elementary School
 District: Fayette County
 Code: 165032
 Grade: 04

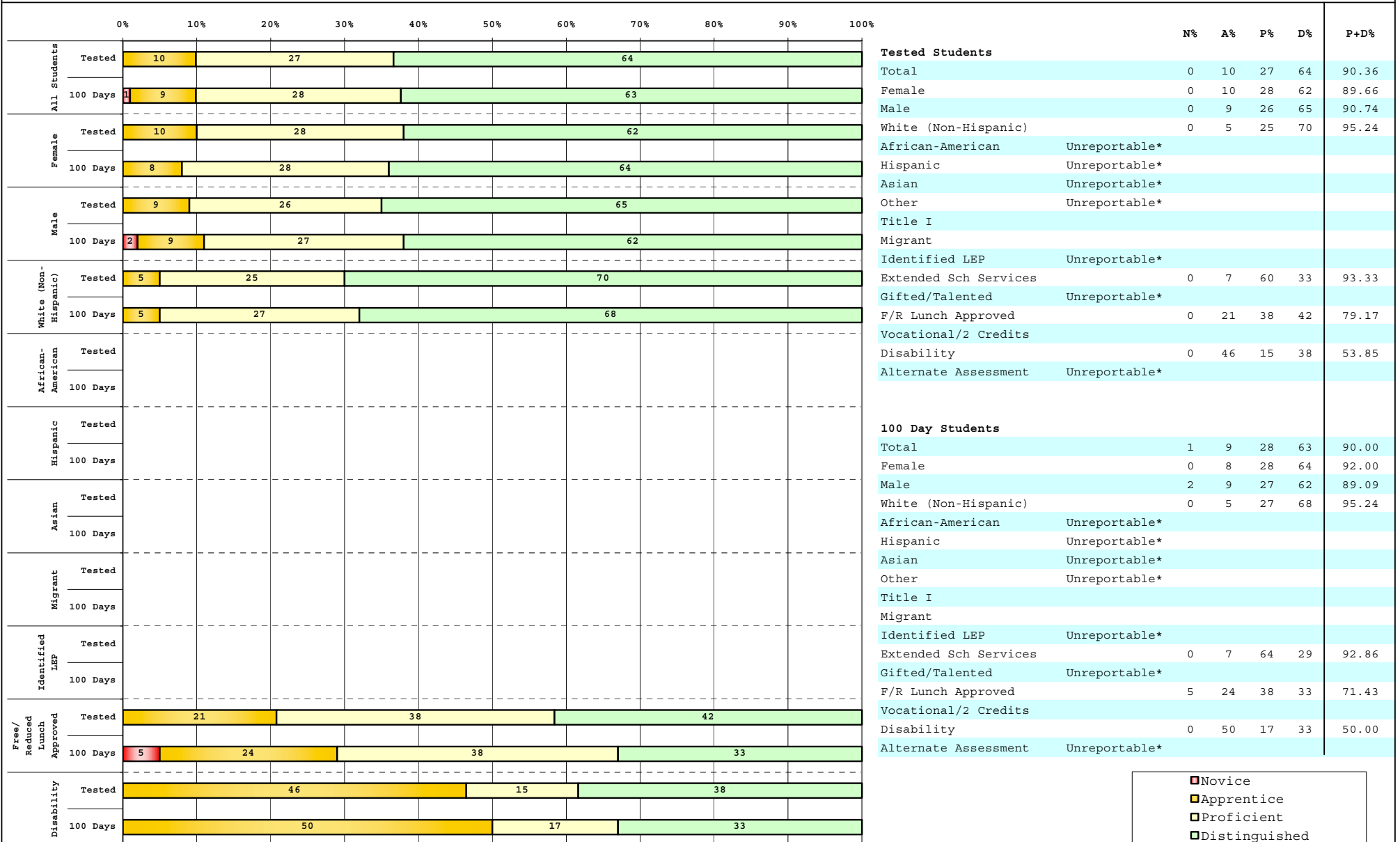


The horizontal bar represents the percent of students scoring at a performance level within a particular year. Percentages may not sum to 100% due to rounding.



**2008-2009
INTERIM PERFORMANCE REPORT
SCIENCE DISAGGREGATION
Performance Level Percents**

School: Cassidy Elementary School
District: Fayette County
Code: 165032
Grade: 04



■	Novice
■	Apprentice
■	Proficient
■	Distinguished

Percentage may not sum to 100% due to rounding. 'Unreportable*' indicates subpopulations with fewer than 10 students or subpopulations where all students score at the same performance level.



2008-2009
INTERIM PERFORMANCE REPORT
SCIENCE CORE CONTENT

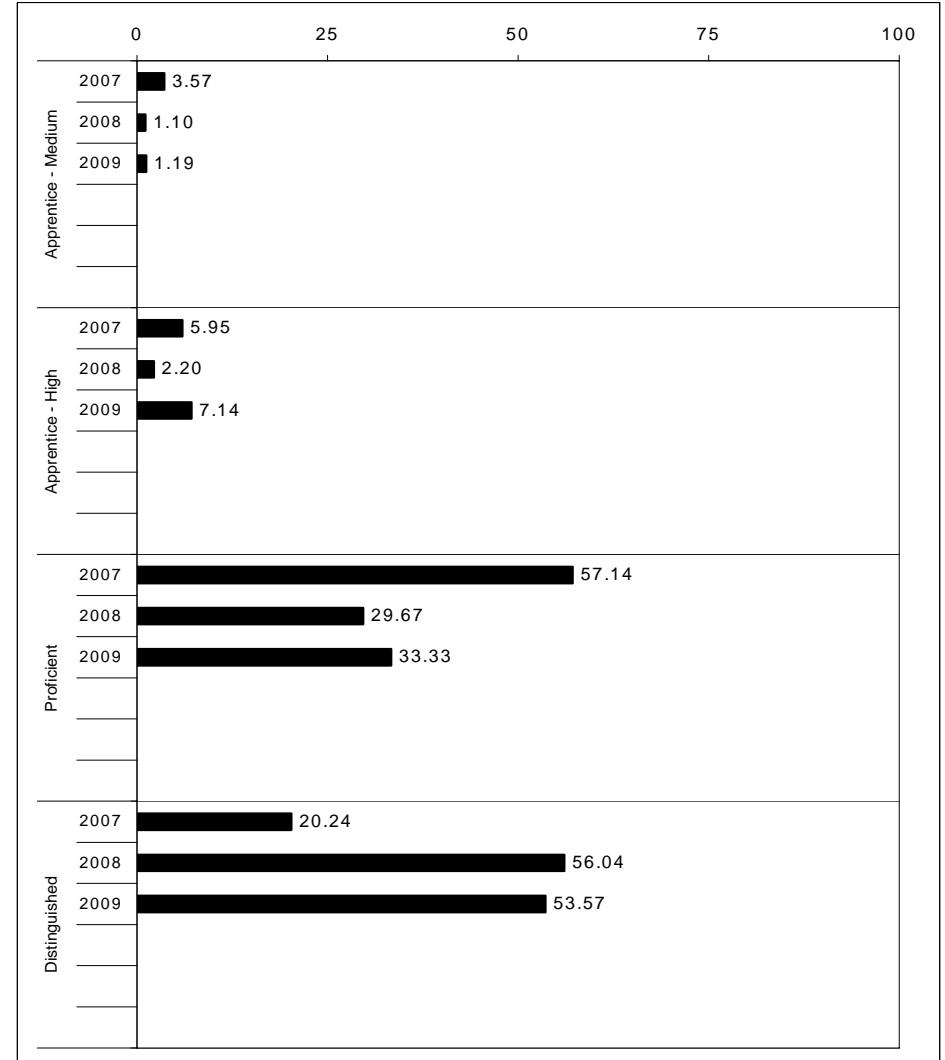
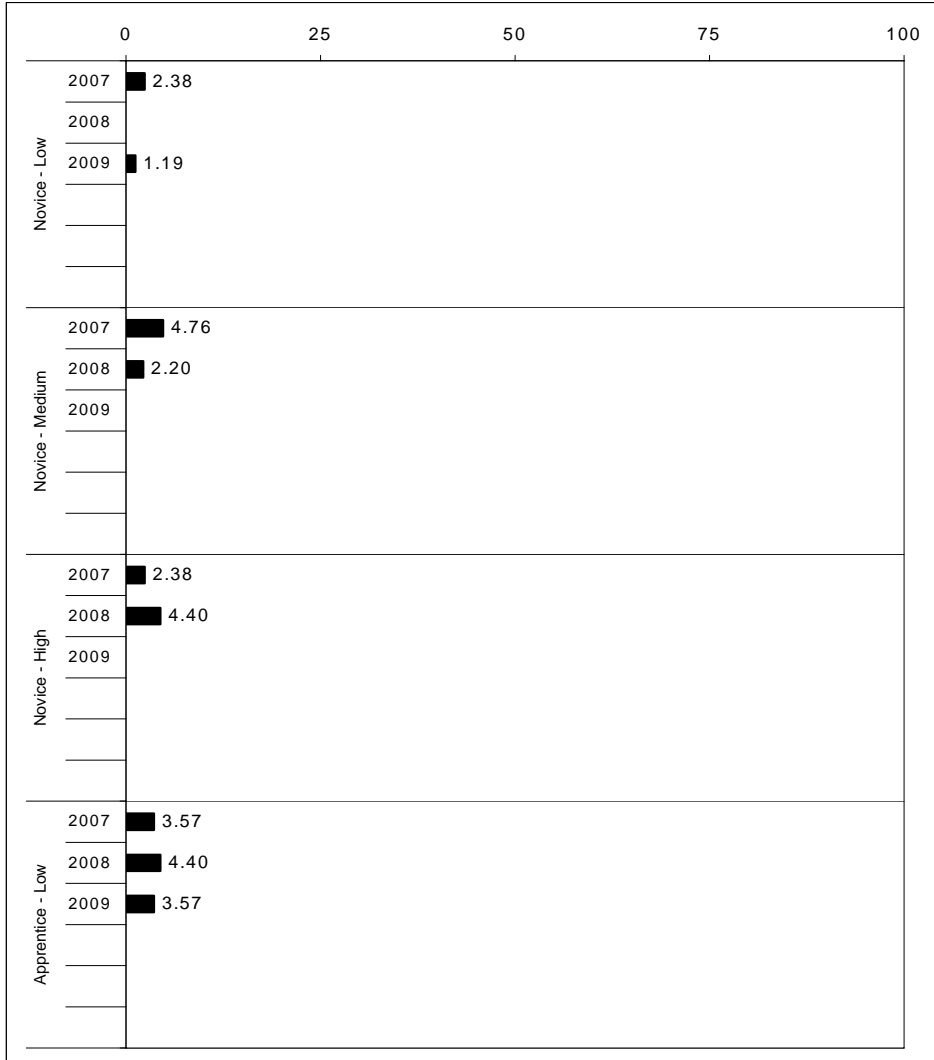
School: Cassidy Elementary School
 District: Fayette County
 Code: 165032
 Grade: 04

	No. Items	No. Observations	SCHOOL								Mean	Std. Err.	No. Observations	STATE						Mean	School -State Mean
			B	0	1	2	3	4	B	0				1	2	3	4				
OPEN RESPONSE																					
1.x.x - Physical Science	2	26	0	15	8	31	31	15	2.2	0.2	16,337	0	17	19	42	17	5	1.7	0.5		
2.x.x - Earth Space Science	3	105	0	4	12	30	42	11	2.4	0.1	65,658	0	12	22	35	26	4	1.9	0.5		
3.x.x - Biological Science	3	103	0	2	5	13	52	28	3.0	0.1	65,506	0	2	11	33	44	9	2.5	0.5		
4.x.x - Unifying Concepts	2	90	0	1	3	12	34	49	3.3	0.1	57,508	0	3	13	33	35	15	2.5	0.8		
MULTIPLE CHOICE																					
1.x.x - Physical Science	18	624	91	9	0				0.91	0.02	393,336	82	18	0				0.81	0.10		
2.x.x - Earth Space Science	19	636	87	13	0				0.87	0.02	401,488	71	29	0				0.71	0.16		
3.x.x - Biological Science	22	742	90	10	0				0.90	0.02	467,138	78	22	0				0.78	0.12		
4.x.x - Unifying Concepts	14	506	92	8	0				0.92	0.02	319,534	84	15	0				0.84	0.08		



2008-2009
INTERIM PERFORMANCE REPORT
SOCIAL STUDIES TREND DATA
Performance Level Percents

School: Cassidy Elementary School
 District: Fayette County
 Code: 165032
 Grade: 05



The horizontal bar represents the percent of students scoring at a performance level within a particular year. Percentages may not sum to 100% due to rounding.



**2008-2009
INTERIM PERFORMANCE REPORT
SOCIAL STUDIES DISAGGREGATION
Performance Level Percents**

School: Cassidy Elementary School
District: Fayette County
Code: 165032
Grade: 05

		0%	10%	20%	30%	40%	50%	60%	70%	80%	90%	100%	N%	A%	P%	D%	P+D%	
All Students	Tested	1	11	36	52													
	100 Days	1	12	33	54													
Female	Tested	2	15	37	46													
	100 Days	2	16	38	44													
Male	Tested	7	35	58														
	100 Days	8	28	64														
White (Non-Hispanic)	Tested	2	8	29	62													
	100 Days	2	8	27	63													
African-American	Tested		42	50	8													
	100 Days		42	50	8													
Hispanic	Tested																	
	100 Days																	
Asian	Tested																	
	100 Days																	
Migrant	Tested																	
	100 Days																	
Identified LEP	Tested																	
	100 Days																	
Free/Reduced Lunch Approved	Tested		29	48	24													
	100 Days		30	45	25													
Disability	Tested																	
	100 Days																	

		N%	A%	P%	D%	P+D%
Tested Students						
Total		1	11	36	52	87.64
Female		2	15	37	46	82.61
Male		0	7	35	58	93.02
White (Non-Hispanic)		2	8	29	62	90.91
African-American		0	42	50	8	58.33
Hispanic	Unreportable*					
Asian	Unreportable*					
Other	Unreportable*					
Title I						
Migrant						
Identified LEP	Unreportable*					
Extended Sch Services		0	36	36	27	63.64
Gifted/Talented		0	0	7	93	100.00
F/R Lunch Approved		0	29	48	24	71.43
Vocational/2 Credits						
Disability	Unreportable*					
Alternate Assessment						
100 Day Students						
Total		1	12	33	54	86.90
Female		2	16	38	44	82.22
Male		0	8	28	64	92.31
White (Non-Hispanic)		2	8	27	63	90.48
African-American		0	42	50	8	58.33
Hispanic	Unreportable*					
Asian						
Other	Unreportable*					
Title I						
Migrant						
Identified LEP	Unreportable*					
Extended Sch Services		0	36	36	27	63.64
Gifted/Talented		0	0	7	93	100.00
F/R Lunch Approved		0	30	45	25	70.00
Vocational/2 Credits						
Disability	Unreportable*					
Alternate Assessment						

■ Novice
■ Apprentice
■ Proficient
■ Distinguished

Percentage may not sum to 100% due to rounding. 'Unreportable*' indicates subpopulations with fewer than 10 students or subpopulations where all students score at the same performance level.



2008-2009
INTERIM PERFORMANCE REPORT
SOCIAL STUDIES CORE CONTENT

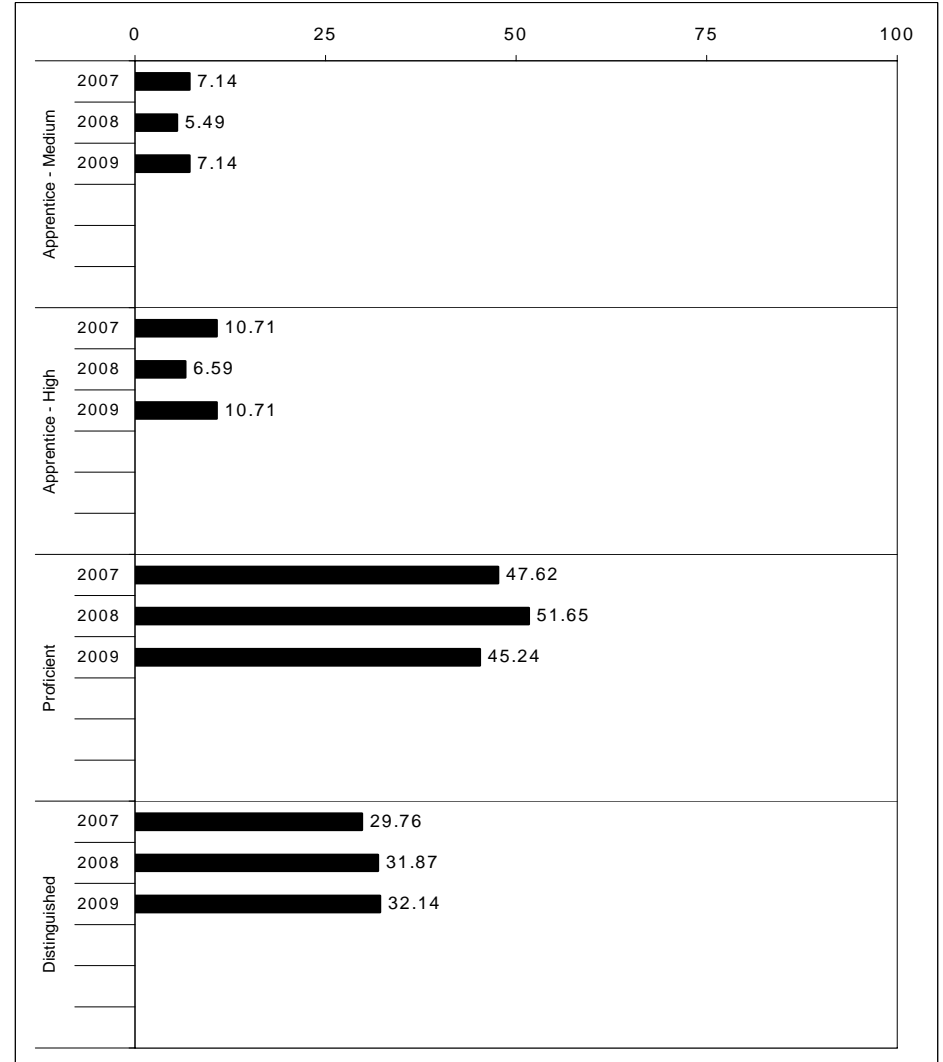
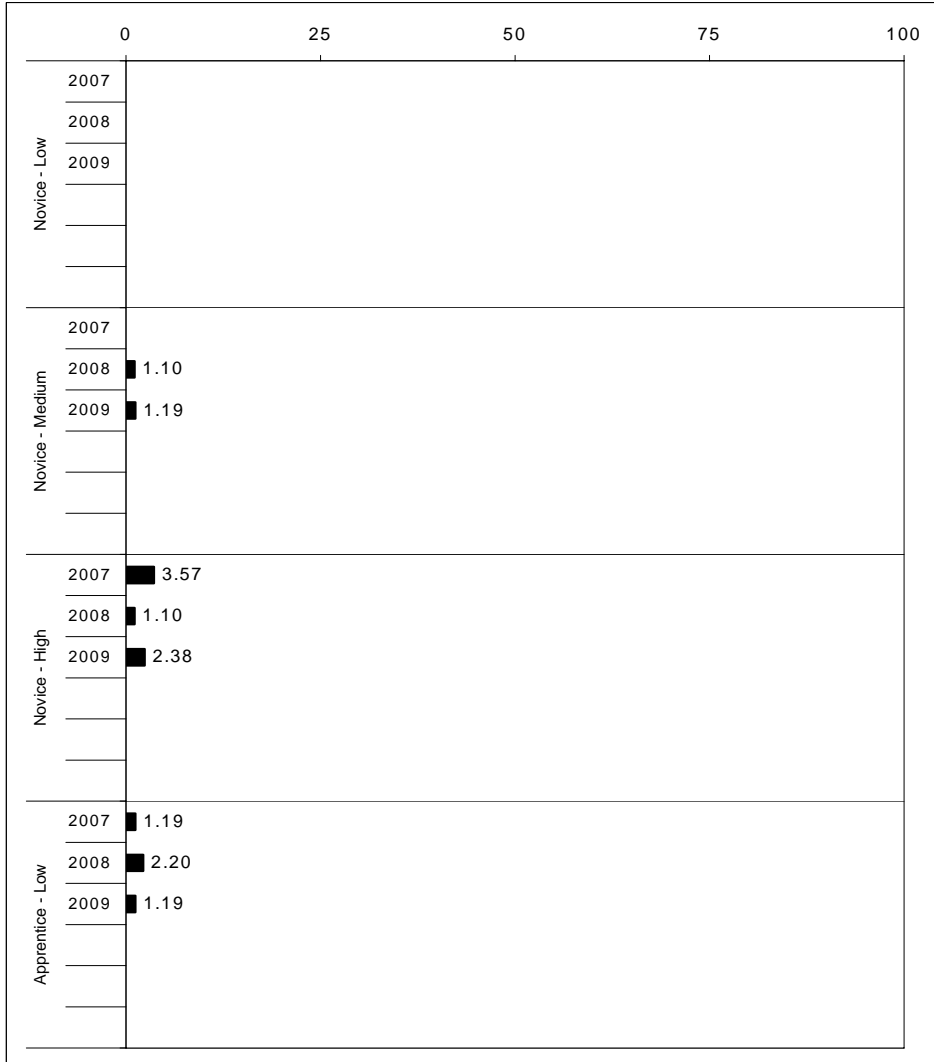
School: Cassidy Elementary School
 District: Fayette County
 Code: 165032
 Grade: 05

	No. Items	No. Observations	SCHOOL								Std. Err.	No. Observations	STATE								School -State Mean
			B	0	1	2	3	4	Mean	B			0	1	2	3	4	Mean			
OPEN RESPONSE																					
1.x.x - Government & Civics	2	95	0	4	18	53	21	4	2.0	0.1	56,903	0	5	37	45	10	2	1.7	0.3		
2.x.x - Cultures & Societies	1	18	0	0	6	33	44	17	2.7	0.2	8,151	0	4	21	56	15	4	1.9	0.8		
3.x.x - Economics	1	84	0	1	15	35	33	15	2.5	0.1	48,828	0	11	33	41	12	3	1.6	0.9		
4.x.x - Geography	2	33	0	3	9	52	12	24	2.5	0.2	16,077	0	9	32	39	17	3	1.7	0.8		
5.x.x - Historical Perspective	3	106	0	2	10	52	32	4	2.3	0.1	65,353	0	7	35	46	10	2	1.7	0.6		
MULTIPLE CHOICE																					
1.x.x - Government & Civics	14	549	78	22	0				0.78	0.02	317,571	66	34	0				0.66	0.12		
2.x.x - Cultures & Societies	11	361	85	15	0				0.85	0.02	211,383	70	30	0				0.69	0.16		
3.x.x - Economics	11	431	87	13	0				0.87	0.02	252,215	73	27	0				0.73	0.14		
4.x.x - Geography	16	654	75	25	0				0.75	0.02	374,337	66	34	0				0.66	0.09		
5.x.x - Historical Perspective	27	1,000	84	16	0				0.84	0.01	586,076	69	31	0				0.69	0.15		



2008-2009
INTERIM PERFORMANCE REPORT
WRITING ON-DEMAND TREND DATA
Performance Level Percents

School: Cassidy Elementary School
 District: Fayette County
 Code: 165032
 Grade: 05



The horizontal bar represents the percent of students scoring at a performance level within a particular year. Percentages may not sum to 100% due to rounding.



2008-2009
INTERIM PERFORMANCE REPORT
WRITING ON-DEMAND DISAGGREGATION
Performance Level Percents

School: Cassidy Elementary School
 District: Fayette County
 Code: 165032
 Grade: 05

		0%	10%	20%	30%	40%	50%	60%	70%	80%	90%	100%	N%	A%	P%	D%	P+D%	
All Students	Tested	3	20	45	31								Tested Students					
	100 Days	4	19	45	32								Total	3	20	45	31	76.40
Female	Tested	7	17	41	35								Female	7	17	41	35	76.09
	100 Days	7	18	42	33								Male	0	23	49	28	76.74
Male	Tested		23	49	28								White (Non-Hispanic)	3	17	42	38	80.30
	100 Days		21	49	31								African-American	8	42	42	8	50.00
White (Non-Hispanic)	Tested	3	17	42	38								Hispanic	Unreportable*				
	100 Days	3	16	43	38								Asian	Unreportable*				
African-American	Tested	8	42	42	8								Other	Unreportable*				
	100 Days	8	42	42	8								Title I					
Hispanic	Tested												Migrant					
	100 Days												Identified LEP	Unreportable*				
Asian	Tested												Extended Sch Services	9	55	18	18	36.36
	100 Days												Gifted/Talented	0	0	37	63	100.00
Migrant	Tested												F/R Lunch Approved	10	43	38	10	47.62
	100 Days												Vocational/2 Credits					
Identified LEP	Tested												Disability	Unreportable*				
	100 Days												Alternate Assessment					
Free/Reduced Lunch Approved	Tested	10	43	38	10								100 Day Students					
	100 Days	10	40	40	10								Total	4	19	45	32	77.38
Disability	Tested												Female	7	18	42	33	75.56
	100 Days												Male	0	21	49	31	79.49
													White (Non-Hispanic)	3	16	43	38	80.95
													African-American	8	42	42	8	50.00
													Hispanic	Unreportable*				
													Asian					
													Other	Unreportable*				
													Title I					
													Migrant					
													Identified LEP	Unreportable*				
													Extended Sch Services	9	55	18	18	36.36
													Gifted/Talented	0	0	37	63	100.00
													F/R Lunch Approved	10	40	40	10	50.00
													Vocational/2 Credits					
													Disability	Unreportable*				
													Alternate Assessment					

■ Novice
■ Apprentice
■ Proficient
■ Distinguished

Percentage may not sum to 100% due to rounding. 'Unreportable*' indicates subpopulations with fewer than 10 students or subpopulations where all students score at the same performance level.



2008-2009
INTERIM PERFORMANCE REPORT
WRITING ON-DEMAND CORE CONTENT

School: Cassidy Elementary School
 District: Fayette County
 Code: 165032
 Grade: 05

WRITING PROMPT	SCHOOL												STATE												School
	No. Observations	Percents											Mean	Percents											Mean
	B	0	1	2	3	4	5	6	7	8		B	0	1	2	3	4	5	6	7	8				
Inform																									
1.X.X - Content	26	0	0	0	4	4	27	12	35	12	8	5.35	0	1	1	9	9	34	18	21	4	2	4.43	0.92	
2.X.X - Structure	26	0	0	0	4	4	27	12	31	19	4	5.35	0	1	2	9	10	35	19	19	3	1	4.33	1.02	
3.X.X - Convention	26	0	0	0	8	8	15	19	35	8	8	5.19	0	0	0	12	11	34	19	19	3	1	4.38	0.81	
Narrate for a purpose																									
1.X.X - Content	30	0	0	0	7	0	17	17	50	10	0	5.33	0	1	1	10	9	36	18	21	3	1	4.35	0.98	
2.X.X - Structure	30	0	0	0	7	0	17	17	53	7	0	5.30	0	1	2	10	10	37	17	19	3	1	4.27	1.03	
3.X.X - Convention	30	0	0	0	7	3	17	13	53	7	0	5.23	0	0	0	12	10	36	18	19	3	1	4.33	0.90	
Persuade																									
1.X.X - Content	28	0	0	4	7	4	11	14	50	4	7	5.25	0	1	1	8	8	33	19	21	5	3	4.50	0.75	
2.X.X - Structure	28	0	0	4	7	7	7	29	36	4	7	5.07	0	2	2	9	10	33	19	20	5	2	4.42	0.65	
3.X.X - Convention	28	0	0	0	11	4	18	7	54	4	4	5.14	0	0	0	11	10	32	19	20	5	2	4.50	0.64	

MULTIPLE CHOICE	No. Items	SCHOOL							STATE							School
		No. Observations	Percents			Mean	Std. Err.	No. Observations	Percents			Mean	-State Mean			
		Correct	Incorrect	Omit/Mult				Correct	Incorrect	Omit/Mult						
4.x.x - Writing Process	52	1,008	83	16	0	0.83	0.01	585,936	73	27	0	0.73	0.10			
4.10.x - Revising	16	215	80	19	1	0.80	0.03	130,317	66	34	0	0.66	0.14			
4.11.x - Editing	36	793	84	16	0	0.84	0.02	455,619	75	24	0	0.75	0.09			