



Interim Performance Report

In March 2009, the Kentucky General Assembly passed Senate Bill 1 (SB1) that was subsequently signed into law by the Governor. SB1 calls for a significant overhaul of the state's assessment and accountability system. The new assessment system begins in the spring of 2012. The school years of 2008-2009, 2009-2010 and 2010-2011 are described in SB1 as an interim period. This three-year period allows Kentucky to develop the new assessment system and to carry on state and federal testing requirements.

The Interim Performance Report includes the Kentucky Core Content Test (KCCT) in Reading (grades 3-8 and 10), Mathematics (grades 3-8 and 11), Science (grades 4, 7 and 11), Social Studies (grades 5, 8 and 11) and Writing On-Demand (grades 5, 8 and 12). The KCCT is based on the Kentucky Core Content for Assessment (Version 4.1) and contains multiple choice and open response questions. The Writing On-Demand test uses writing prompts that require students to craft a piece of writing in a 60 minute period.

The KCCT is developed under the direction of content advisory committees of Kentucky educators who draft, review and select test questions. All test items are reviewed by a bias review committee to enhance the fairness of items for all Kentucky students.

The KCCT continues to fulfill the requirements of the federal statute known as the No Child Left Behind Act of 2001. A separate accountability report for No Child Left Behind (NCLB) is published by the Kentucky Department of Education.

The Interim Performance Report focuses entirely on the five state-required content areas and provides data for schools or districts. The data in this report is not used directly for state accountability; although, these results can fulfill the requirements of Senate Bill 168 from 2002 and may be used by schools or districts for their own local accountability needs.

Performance standards are based on descriptions of Novice, Apprentice, Proficient and Distinguished (NAPD) student performance levels specific to the content area and grade being assessed. The performance standards, in conjunction with Kentucky's Core Content for Assessment, should allow instruction to better focus on the content area to be taught and on how well students must demonstrate achievement in each content area.

Reporting Changes for 2009

Based on SB1, Kentucky will not be reporting state accountability and academic indices as in the past. The report does have several familiar pages with performance level (NAPD) trend, core content and disaggregation data per content area. Districts and schools will still see distributions of how students scored in the Novice (with sublevels), Apprentice (with sublevels), Proficient and Distinguished performance levels.

Confidentiality Changes

Due to federal regulations around the Family Education Rights and Privacy Act (FERPA), the numbers of students have been removed. Though there is a need to report as much data as possible, there is also a paramount need to maintain the confidential aspects of individual scores. When scores are reported in what is commonly called "small cells" where very few students may be categorized, there is the possibility of revealing individual scores when numbers are reported. Numbers are reported to each district in a confidential report that accompanies the public Interim Performance Report.

2008-2009

INTERIM PERFORMANCE REPORT

School: Ashland Elementary School

District: Fayette County

Code: 165007

Grade: PRIMARY-05

CONTENTS OF THIS REPORT

Introduction	1
Academic Trend Data	
Reading Results	2-8
Mathematics Results	9-15
Science Results	16-18
Social Studies Results	19-21
Writing Results	22-24

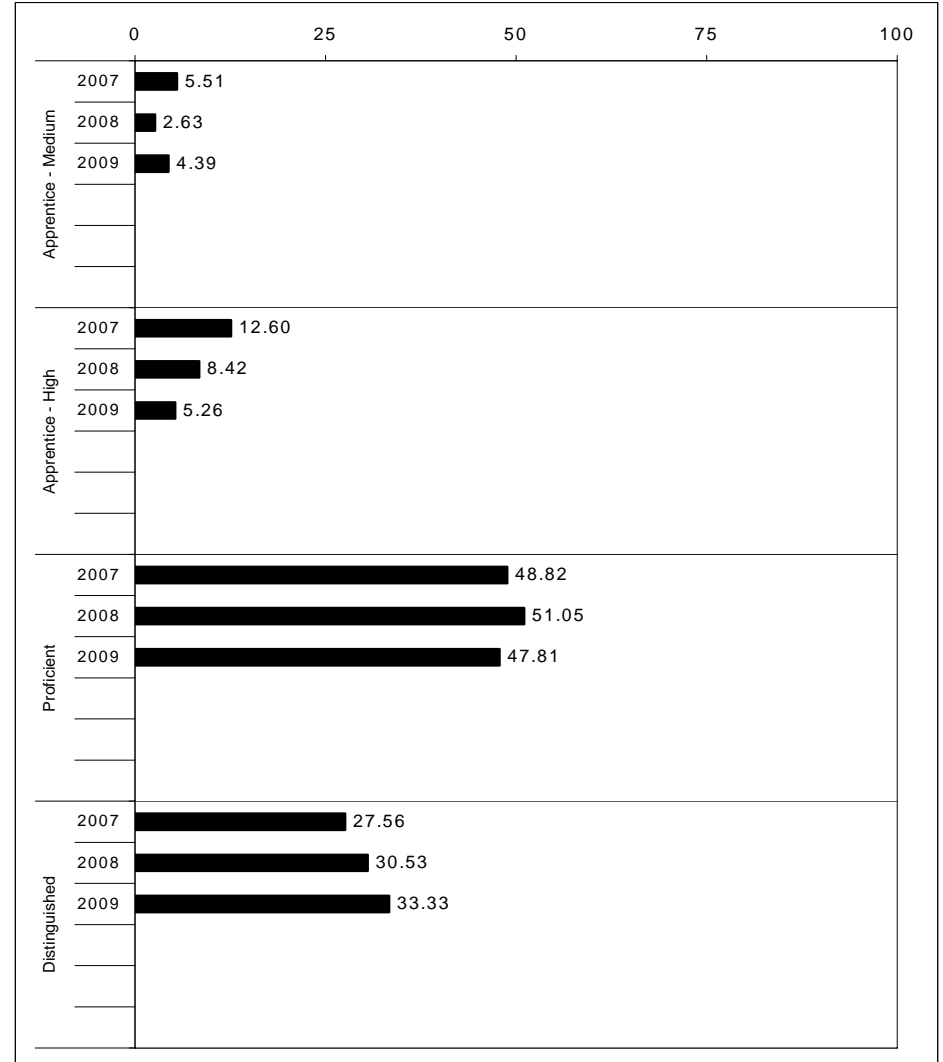
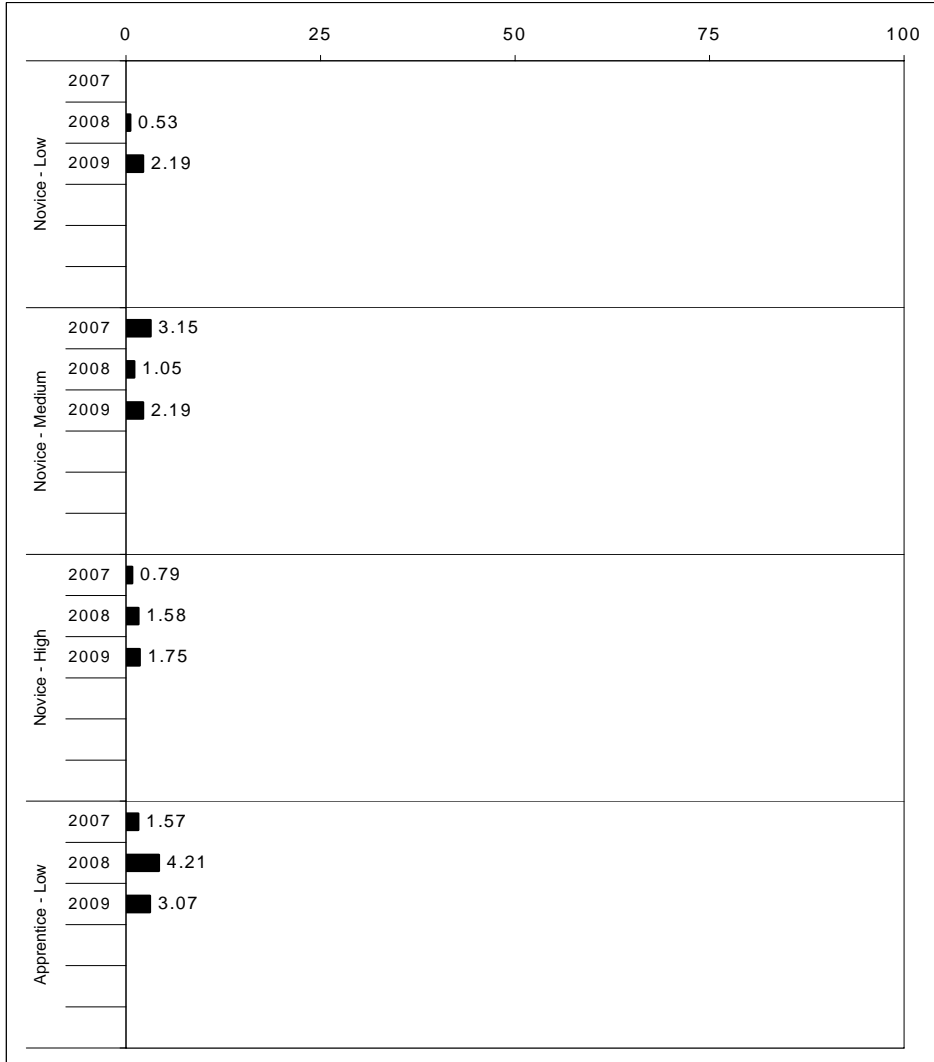
For more information, refer to the 2009 Interim Assessment Interpretative Guide on the Kentucky Department of Education Web site (www.education.ky.gov).





2008-2009
INTERIM PERFORMANCE REPORT
READING TREND DATA
Performance Level Percents

School: Ashland Elementary School
 District: Fayette County
 Code: 165007
 Grade: ELEMENTARY



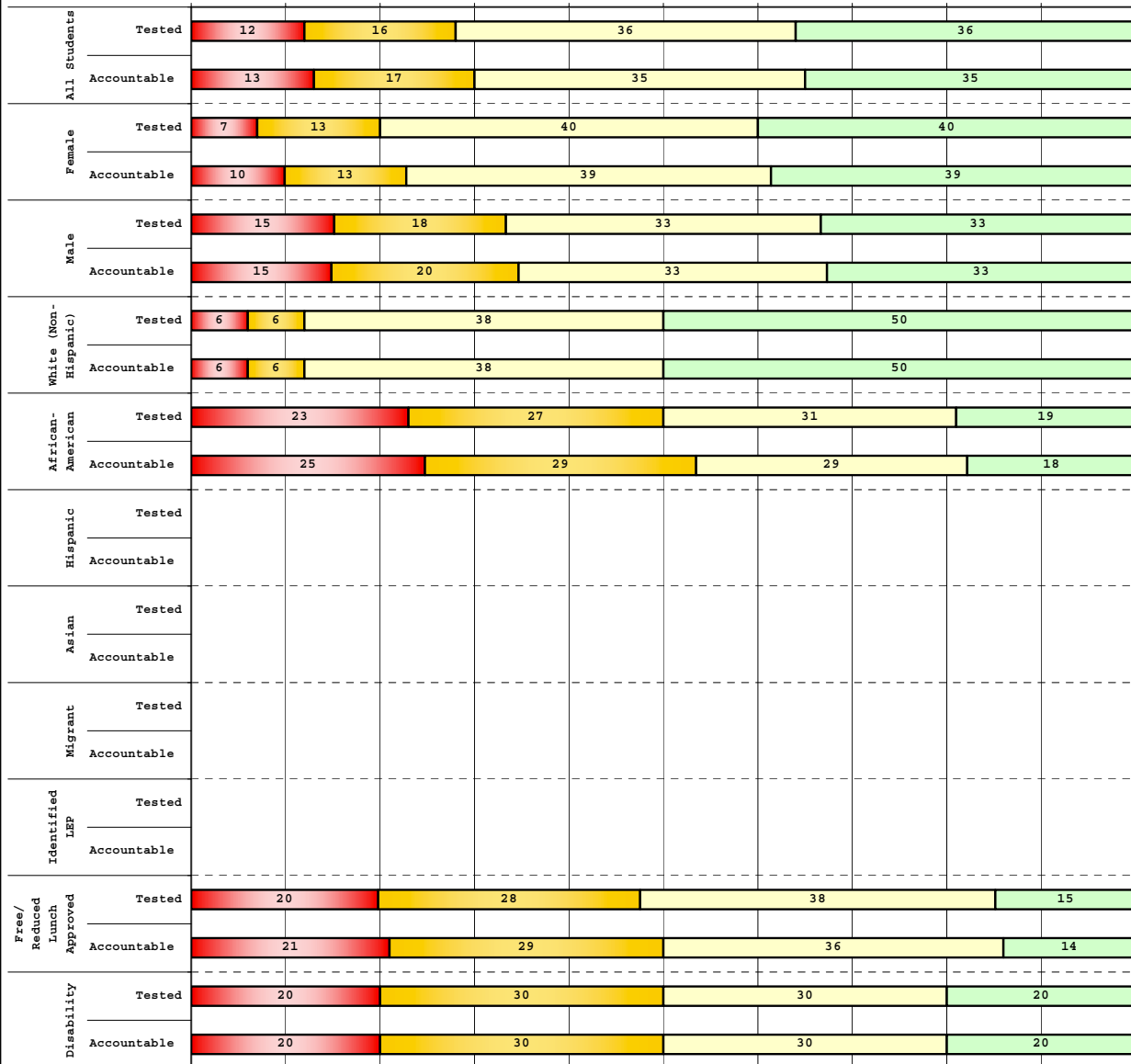
The horizontal bar represents the percent of students scoring at a performance level within a particular year. Percentages may not sum to 100% due to rounding.



**2008-2009
INTERIM PERFORMANCE REPORT
READING DISAGGREGATION
Performance Level Percents**

School: Ashland Elementary School
District: Fayette County
Code: 165007
Grade: 03

0% 10% 20% 30% 40% 50% 60% 70% 80% 90% 100%

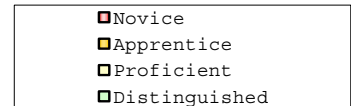


Tested Students

	N%	A%	P%	D%	P+D%
Total	12	16	36	36	72.46
Female	7	13	40	40	80.00
Male	15	18	33	33	66.67
White (Non-Hispanic)	6	6	38	50	88.24
African-American	23	27	31	19	50.00
Hispanic	Unreportable*				
Asian	Unreportable*				
Other	Unreportable*				
Title I	12	16	36	36	72.46
Migrant	Unreportable*				
Identified LEP	Unreportable*				
Extended Sch Services	22	39	33	6	38.89
Gifted/Talented					
F/R Lunch Approved	20	28	38	15	52.50
Vocational/2 Credits					
Disability	20	30	30	20	50.00
Alternate Assessment					

NCLB Accountable Students

	N%	A%	P%	D%	P+D%
Total	13	17	35	35	70.42
Female	10	13	39	39	77.42
Male	15	20	33	33	65.00
White (Non-Hispanic)	6	6	38	50	88.24
African-American	25	29	29	18	46.43
Hispanic	Unreportable*				
Asian	Unreportable*				
Other	Unreportable*				
Title I	13	17	35	35	70.42
Migrant	Unreportable*				
Identified LEP	Unreportable*				
Extended Sch Services	22	39	33	6	38.89
Gifted/Talented					
F/R Lunch Approved	21	29	36	14	50.00
Vocational/2 Credits					
Disability	20	30	30	20	50.00
Alternate Assessment					



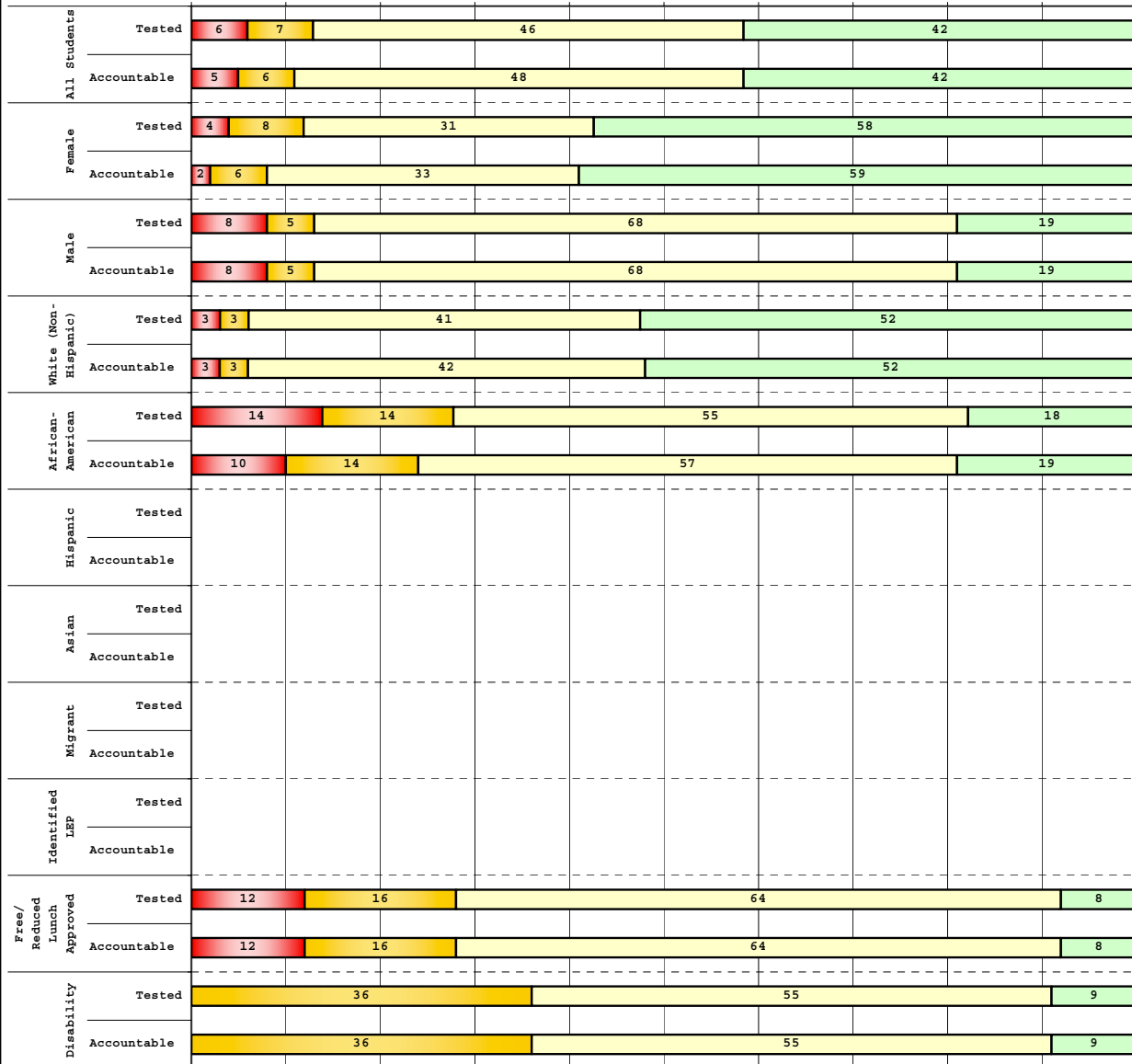
Percentage may not sum to 100% due to rounding. 'Unreportable*' indicates subpopulations with fewer than 10 students or subpopulations where all students score at the same performance level.



2008-2009
INTERIM PERFORMANCE REPORT
READING DISAGGREGATION
Performance Level Percents

School: Ashland Elementary School
 District: Fayette County
 Code: 165007
 Grade: 04

0% 10% 20% 30% 40% 50% 60% 70% 80% 90% 100%

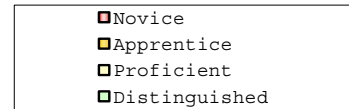


Tested Students

	N%	A%	P%	D%	P+D%
Total	6	7	46	42	87.64
Female	4	8	31	58	88.46
Male	8	5	68	19	86.49
White (Non-Hispanic)	3	3	41	52	93.65
African-American	14	14	55	18	72.73
Hispanic	Unreportable*				
Asian	Unreportable*				
Other	Unreportable*				
Title I	6	7	46	42	87.64
Migrant	Unreportable*				
Identified LEP	Unreportable*				
Extended Sch Services	Unreportable*				
Gifted/Talented	Unreportable*				
F/R Lunch Approved	12	16	64	8	72.00
Vocational/2 Credits	Unreportable*				
Disability	0	36	55	9	63.64
Alternate Assessment	Unreportable*				

NCLB Accountable Students

	N%	A%	P%	D%	P+D%
Total	5	6	48	42	89.53
Female	2	6	33	59	91.84
Male	8	5	68	19	86.49
White (Non-Hispanic)	3	3	42	52	93.55
African-American	10	14	57	19	76.19
Hispanic	Unreportable*				
Asian	Unreportable*				
Other	Unreportable*				
Title I	5	6	48	42	89.53
Migrant	Unreportable*				
Identified LEP	Unreportable*				
Extended Sch Services	Unreportable*				
Gifted/Talented	Unreportable*				
F/R Lunch Approved	12	16	64	8	72.00
Vocational/2 Credits	Unreportable*				
Disability	0	36	55	9	63.64
Alternate Assessment	Unreportable*				



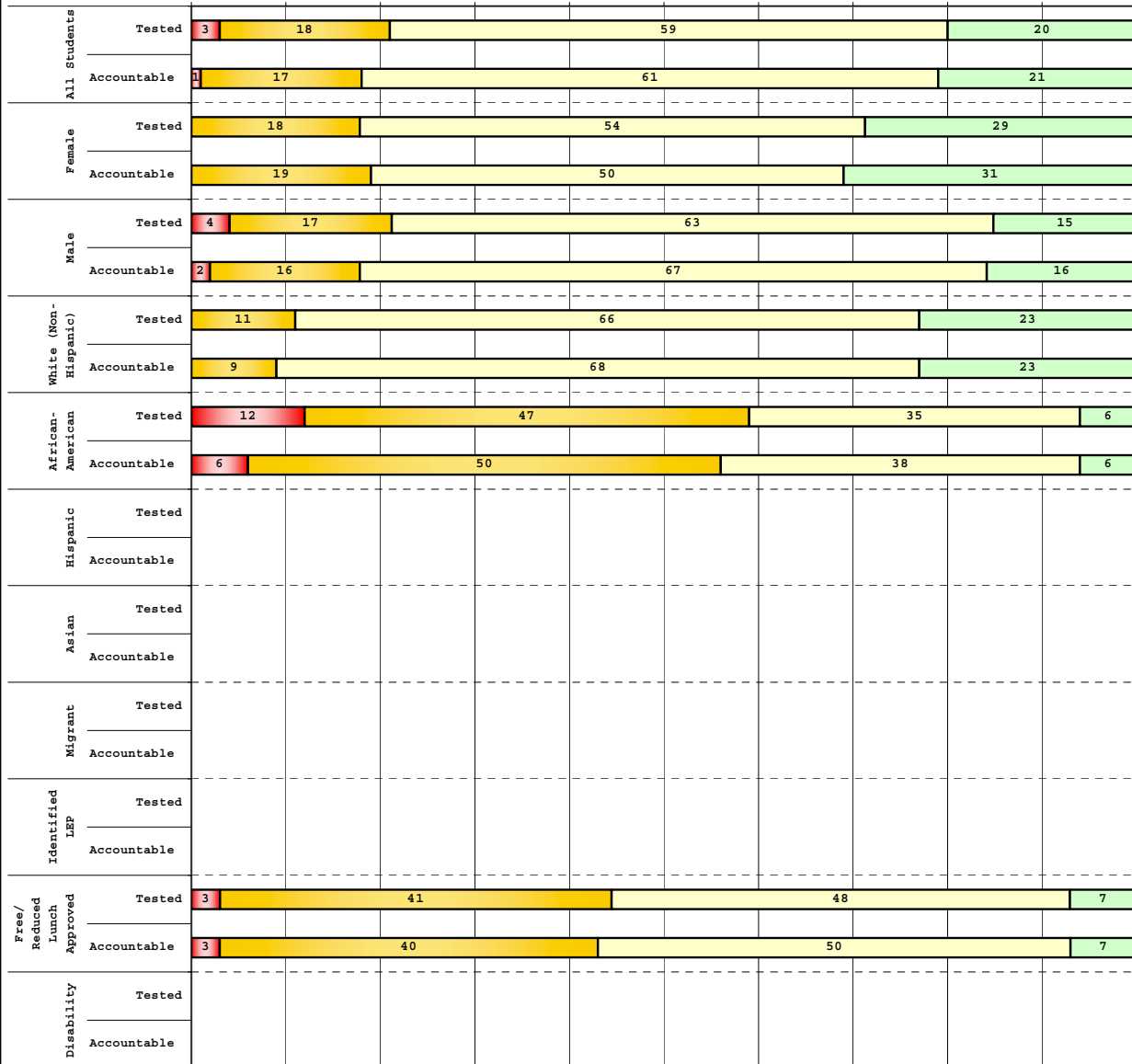
Percentage may not sum to 100% due to rounding. 'Unreportable*' indicates subpopulations with fewer than 10 students or subpopulations where all students score at the same performance level.



2008-2009
INTERIM PERFORMANCE REPORT
READING DISAGGREGATION
Performance Level Percents

School: Ashland Elementary School
 District: Fayette County
 Code: 165007
 Grade: 05

0% 10% 20% 30% 40% 50% 60% 70% 80% 90% 100%

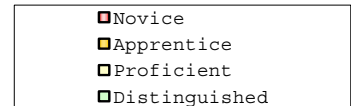


Tested Students

	N%	A%	P%	D%	P+D%
Total	3	18	59	20	79.73
Female	0	18	54	29	82.14
Male	4	17	63	15	78.26
White (Non-Hispanic)	0	11	66	23	89.36
African-American	12	47	35	6	41.18
Hispanic	Unreportable*				
Asian	Unreportable*				
Other	Unreportable*				
Title I	3	18	59	20	79.73
Migrant	Unreportable*				
Identified LEP	Unreportable*				
Extended Sch Services	Unreportable*				
Gifted/Talented	Unreportable*				
F/R Lunch Approved	3	41	48	7	55.17
Vocational/2 Credits	Unreportable*				
Disability	Unreportable*				
Alternate Assessment	Unreportable*				

NCLB Accountable Students

	N%	A%	P%	D%	P+D%
Total	1	17	61	21	81.69
Female	0	19	50	31	80.77
Male	2	16	67	16	82.22
White (Non-Hispanic)	0	9	68	23	91.49
African-American	6	50	38	6	43.75
Hispanic	Unreportable*				
Asian	Unreportable*				
Other	Unreportable*				
Title I	1	17	61	21	81.69
Migrant	Unreportable*				
Identified LEP	Unreportable*				
Extended Sch Services	Unreportable*				
Gifted/Talented	Unreportable*				
F/R Lunch Approved	3	40	50	7	56.67
Vocational/2 Credits	Unreportable*				
Disability	Unreportable*				
Alternate Assessment	Unreportable*				



Percentage may not sum to 100% due to rounding. 'Unreportable*' indicates subpopulations with fewer than 10 students or subpopulations where all students score at the same performance level.



**2008-2009
INTERIM PERFORMANCE REPORT
READING CORE CONTENT**

School: Ashland Elementary School
 District: Fayette County
 Code: 165007
 Grade: 03

	No. Items	No. Observations	SCHOOL							Mean	Std. Err.	No. Observations	STATE							Mean	School -State Mean
			B	0	1	2	3	4	B				0	1	2	3	4				
OPEN RESPONSE																					
2.0.x - Developing Understanding	2	140	0	16	21	44	16	3	1.7	0.1	100,212	0	10	30	44	14	2	1.7	0.0		
3.0.x - Interpreting Text	2	140	0	16	21	44	16	3	1.7	0.1	100,212	0	10	30	44	14	2	1.7	0.0		
MULTIPLE CHOICE																					
1.0.x - Forming a Foundation	32	550	80	20	0				0.80	0.02	392,589	83	17	0				0.83	-0.03		
2.0.x - Developing Understanding	89	1,385	81	19	0				0.81	0.01	993,477	80	20	0				0.80	0.01		
3.0.x - Interpreting Text	31	652	81	19	0				0.81	0.02	468,115	77	23	0				0.77	0.04		
5.0.x - Critical Stance	15	295	83	16	0				0.83	0.02	208,359	79	21	0				0.79	0.04		



2008-2009
INTERIM PERFORMANCE REPORT
READING CORE CONTENT

School: Ashland Elementary School
 District: Fayette County
 Code: 165007
 Grade: 04

	No. Items	No. Observations	SCHOOL								STATE								School -State Mean
			Percents						Mean	Std. Err.	Percents						Mean		
			B	0	1	2	3	4					No. Observations	B	0	1		2	3
OPEN RESPONSE																			
2.0.x - Developing Understanding	5	142	1	3	12	52	29	3	2.1	0.1	81,849	0	3	24	52	18	3	1.9	0.2
3.0.x - Interpreting Text	6	226	1	2	11	43	33	11	2.4	0.1	131,199	0	4	22	45	23	5	2.0	0.4
MULTIPLE CHOICE																			
1.0.x - Forming a Foundation	34	695	82	18	0				0.82	0.02	401,452	72	28	0				0.71	0.11
2.0.x - Developing Understanding	76	1,502	81	19	0				0.81	0.01	868,422	73	27	0				0.73	0.08
3.0.x - Interpreting Text	29	483	89	11	0				0.89	0.02	278,648	79	21	0				0.79	0.10
5.0.x - Critical Stance	9	269	80	20	0				0.80	0.03	155,704	74	26	0				0.74	0.06



**2008-2009
INTERIM PERFORMANCE REPORT
READING CORE CONTENT**

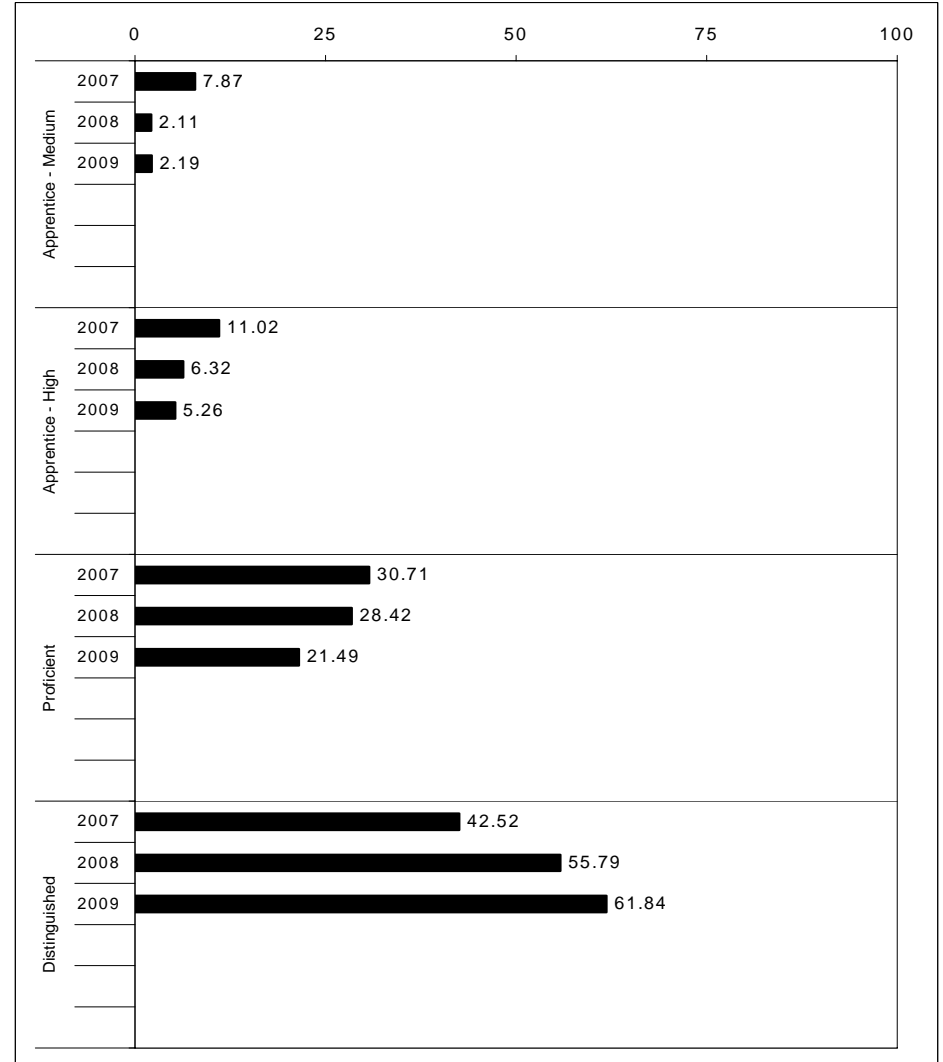
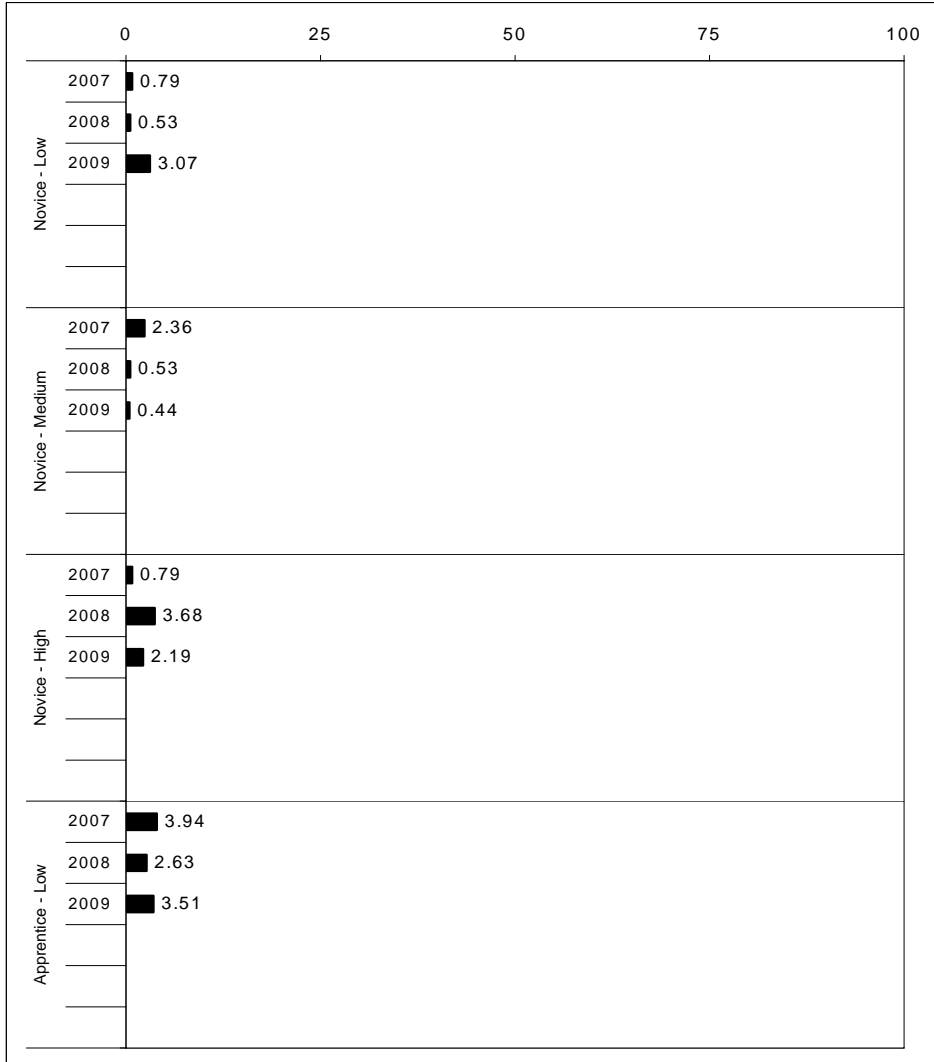
School: Ashland Elementary School
 District: Fayette County
 Code: 165007
 Grade: 05

	No. Items	No. Observations	SCHOOL							Mean	Std. Err.	No. Observations	STATE							Mean	School -State Mean
			B	0	1	2	3	4	B				0	1	2	3	4				
OPEN RESPONSE																					
2.0.x - Developing Understanding	6	128	0	3	13	57	21	6	2.1	0.1	89,507	0	5	23	48	20	5	2.0	0.1		
3.0.x - Interpreting Text	6	195	0	4	15	52	24	5	2.1	0.1	130,403	0	5	21	50	19	4	2.0	0.1		
MULTIPLE CHOICE																					
1.0.x - Forming a Foundation	28	394	80	20	0				0.80	0.02	268,187	74	26	0				0.74	0.06		
2.0.x - Developing Understanding	71	1,209	85	15	0				0.85	0.01	823,068	80	20	0				0.80	0.05		
3.0.x - Interpreting Text	27	488	88	12	0				0.88	0.02	341,653	81	19	0				0.81	0.07		
5.0.x - Critical Stance	17	431	84	16	0				0.84	0.02	300,671	75	25	0				0.75	0.09		



2008-2009
INTERIM PERFORMANCE REPORT
MATHEMATICS TREND DATA
Performance Level Percents

School: Ashland Elementary School
 District: Fayette County
 Code: 165007
 Grade: ELEMENTARY



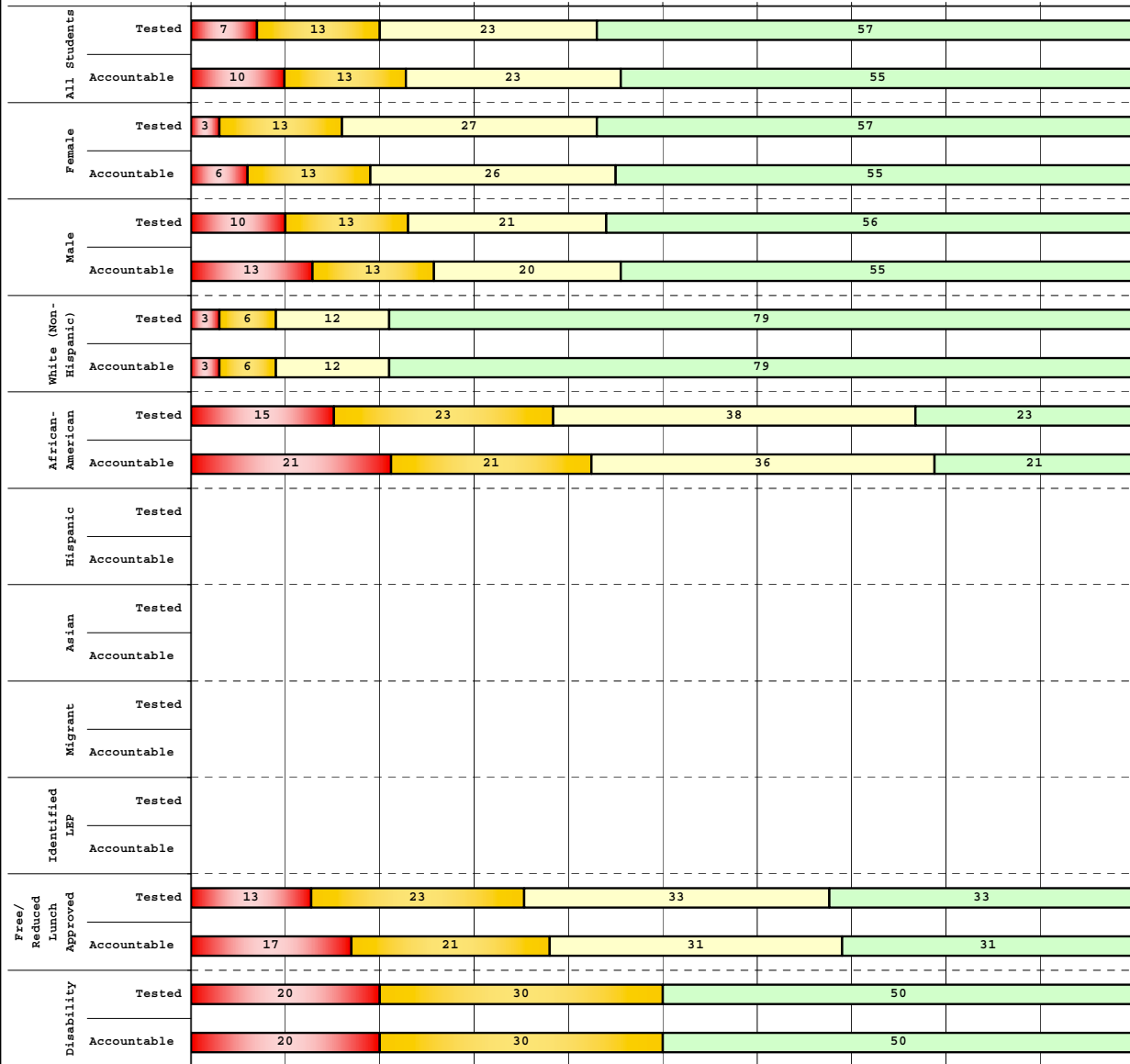
The horizontal bar represents the percent of students scoring at a performance level within a particular year. Percentages may not sum to 100% due to rounding.



2008-2009
INTERIM PERFORMANCE REPORT
MATHEMATICS DISAGGREGATION
Performance Level Percents

School: Ashland Elementary School
 District: Fayette County
 Code: 165007
 Grade: 03

0% 10% 20% 30% 40% 50% 60% 70% 80% 90% 100%



	N%	A%	P%	D%	P+D%
Tested Students					
Total	7	13	23	57	79.71
Female	3	13	27	57	83.33
Male	10	13	21	56	76.92
White (Non-Hispanic)	3	6	12	79	91.18
African-American	15	23	38	23	61.54
Hispanic	Unreportable*				
Asian	Unreportable*				
Other	Unreportable*				
Title I	7	13	23	57	79.71
Migrant	Unreportable*				
Identified LEP	Unreportable*				
Extended Sch Services	17	22	44	17	61.11
Gifted/Talented	Unreportable*				
F/R Lunch Approved	13	23	33	33	65.00
Vocational/2 Credits	Unreportable*				
Disability	20	30	0	50	50.00
Alternate Assessment	Unreportable*				
NCLB Accountable Students					
Total	10	13	23	55	77.46
Female	6	13	26	55	80.65
Male	13	13	20	55	75.00
White (Non-Hispanic)	3	6	12	79	91.18
African-American	21	21	36	21	57.14
Hispanic	Unreportable*				
Asian	Unreportable*				
Other	Unreportable*				
Title I	10	13	23	55	77.46
Migrant	Unreportable*				
Identified LEP	Unreportable*				
Extended Sch Services	17	22	44	17	61.11
Gifted/Talented	Unreportable*				
F/R Lunch Approved	17	21	31	31	61.90
Vocational/2 Credits	Unreportable*				
Disability	20	30	0	50	50.00
Alternate Assessment	Unreportable*				

■	Novice
■	Apprentice
■	Proficient
■	Distinguished

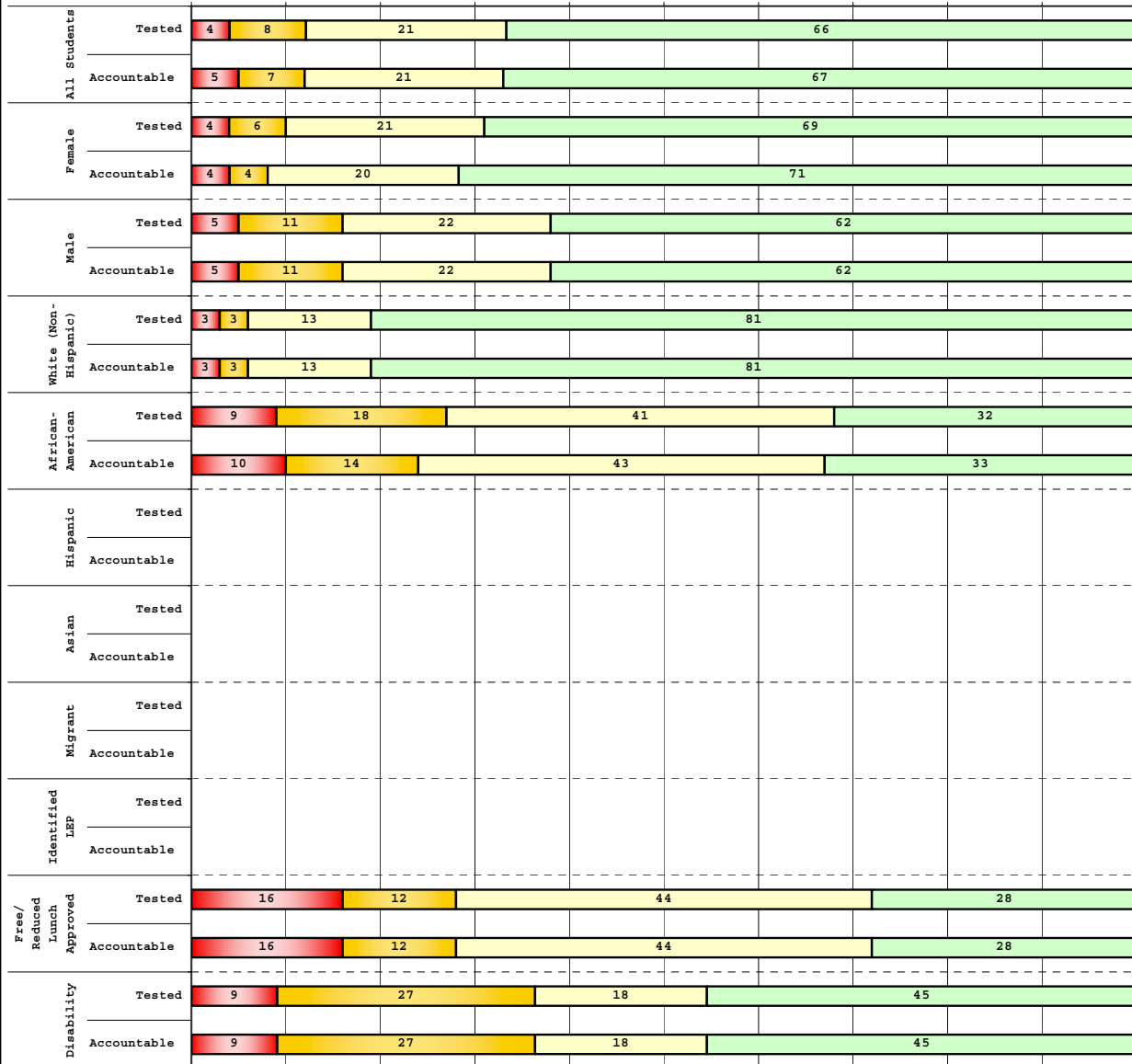
Percentage may not sum to 100% due to rounding. 'Unreportable*' indicates subpopulations with fewer than 10 students or subpopulations where all students score at the same performance level.



2008-2009
INTERIM PERFORMANCE REPORT
MATHEMATICS DISAGGREGATION
Performance Level Percents

School: Ashland Elementary School
 District: Fayette County
 Code: 165007
 Grade: 04

0% 10% 20% 30% 40% 50% 60% 70% 80% 90% 100%

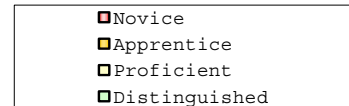


Tested Students

	N%	A%	P%	D%	P+D%
Total	4	8	21	66	87.64
Female	4	6	21	69	90.38
Male	5	11	22	62	83.78
White (Non-Hispanic)	3	3	13	81	93.65
African-American	9	18	41	32	72.73
Hispanic					Unreportable*
Asian					Unreportable*
Other					Unreportable*
Title I	4	8	21	66	87.64
Migrant					
Identified LEP					Unreportable*
Extended Sch Services					Unreportable*
Gifted/Talented					Unreportable*
F/R Lunch Approved	16	12	44	28	72.00
Vocational/2 Credits					
Disability	9	27	18	45	63.64
Alternate Assessment					

NCLB Accountable Students

	N%	A%	P%	D%	P+D%
Total	5	7	21	67	88.37
Female	4	4	20	71	91.84
Male	5	11	22	62	83.78
White (Non-Hispanic)	3	3	13	81	93.55
African-American	10	14	43	33	76.19
Hispanic					
Asian					Unreportable*
Other					Unreportable*
Title I	5	7	21	67	88.37
Migrant					
Identified LEP					Unreportable*
Extended Sch Services					Unreportable*
Gifted/Talented					Unreportable*
F/R Lunch Approved	16	12	44	28	72.00
Vocational/2 Credits					
Disability	9	27	18	45	63.64
Alternate Assessment					



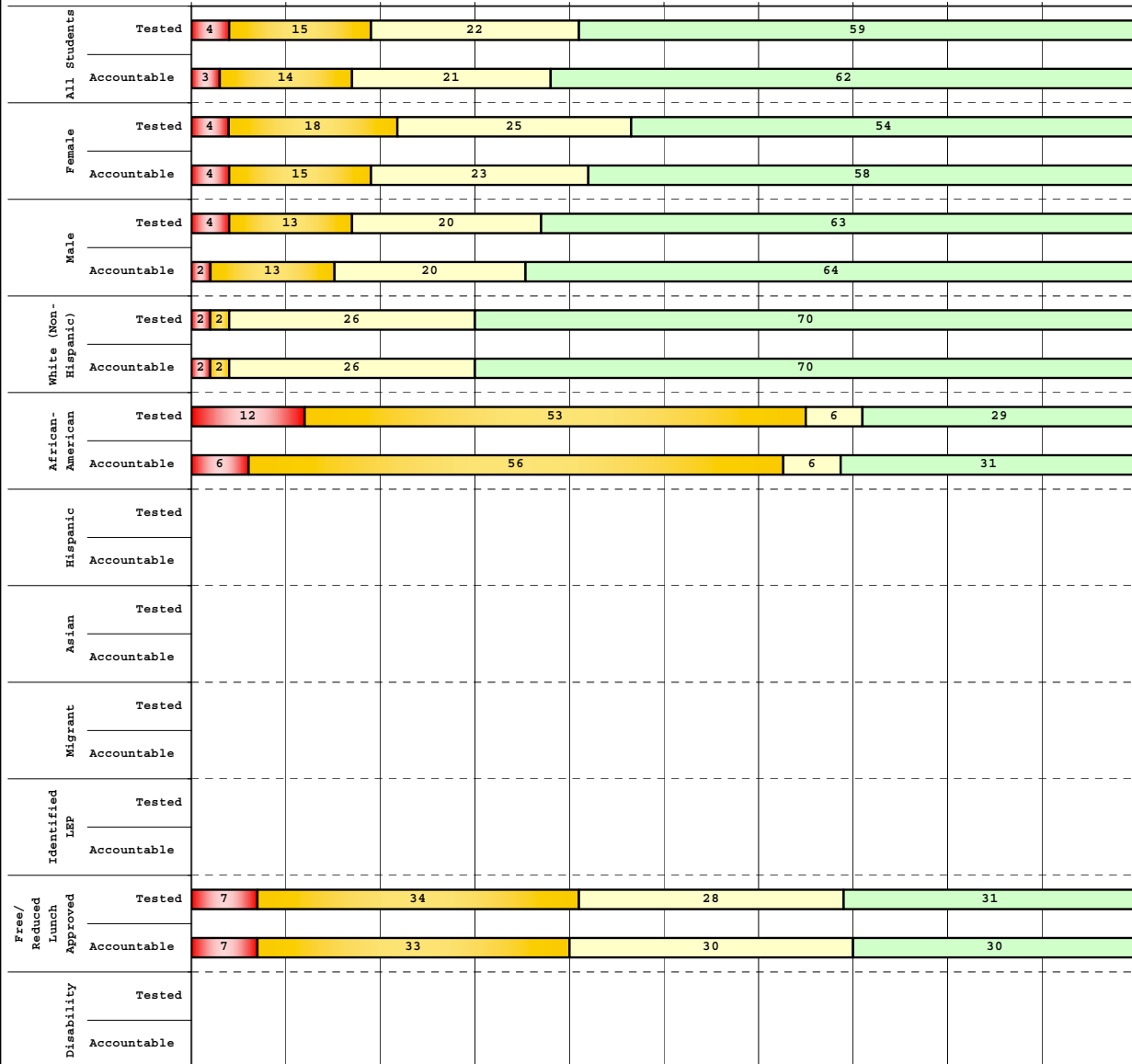
Percentage may not sum to 100% due to rounding. 'Unreportable*' indicates subpopulations with fewer than 10 students or subpopulations where all students score at the same performance level.



**2008-2009
INTERIM PERFORMANCE REPORT
MATHEMATICS DISAGGREGATION
Performance Level Percents**

School: Ashland Elementary School
District: Fayette County
Code: 165007
Grade: 05

0% 10% 20% 30% 40% 50% 60% 70% 80% 90% 100%



	N%	A%	P%	D%	P+D%
Tested Students					
Total	4	15	22	59	81.08
Female	4	18	25	54	78.57
Male	4	13	20	63	82.61
White (Non-Hispanic)	2	2	26	70	95.74
African-American	12	53	6	29	35.29
Hispanic	Unreportable*				
Asian	Unreportable*				
Other	Unreportable*				
Title I	4	15	22	59	81.08
Migrant	Unreportable*				
Identified LEP	Unreportable*				
Extended Sch Services	Unreportable*				
Gifted/Talented	Unreportable*				
F/R Lunch Approved	7	34	28	31	58.62
Vocational/2 Credits	Unreportable*				
Disability	Unreportable*				
Alternate Assessment	Unreportable*				
NCLB Accountable Students					
Total	3	14	21	62	83.10
Female	4	15	23	58	80.77
Male	2	13	20	64	84.44
White (Non-Hispanic)	2	2	26	70	95.74
African-American	6	56	6	31	37.50
Hispanic	Unreportable*				
Asian	Unreportable*				
Other	Unreportable*				
Title I	3	14	21	62	83.10
Migrant	Unreportable*				
Identified LEP	Unreportable*				
Extended Sch Services	Unreportable*				
Gifted/Talented	Unreportable*				
F/R Lunch Approved	7	33	30	30	60.00
Vocational/2 Credits	Unreportable*				
Disability	Unreportable*				
Alternate Assessment	Unreportable*				

■ Novice
■ Apprentice
■ Proficient
■ Distinguished

Percentage may not sum to 100% due to rounding. 'Unreportable*' indicates subpopulations with fewer than 10 students or subpopulations where all students score at the same performance level.



2008-2009
INTERIM PERFORMANCE REPORT
MATHEMATICS CORE CONTENT

School: Ashland Elementary School
 District: Fayette County
 Code: 165007
 Grade: 03

	No. Items	No. Observations	SCHOOL								Std. Err.	No. Observations	STATE								School -State Mean
			B	0	1	2	3	4	Mean	B			0	1	2	3	4	Mean			
OPEN RESPONSE																					
1.x.x - Number Prop Oper	5	175	0	18	30	15	16	21	1.9	0.1	125,243	0	21	35	26	10	8	1.5	0.4		
2.x.x - Measurement	1	12	0	17	0	0	33	50	3.0	0.4	8,325	0	25	5	30	14	25	2.1	0.9		
3.x.x - Geometry	2	24	0	0	29	29	17	25	2.4	0.2	16,777	0	8	24	35	13	20	2.1	0.3		
4.x.x - Data Analysis & Probabilit	1	70	0	4	10	11	20	54	3.1	0.2	50,106	0	9	13	19	27	32	2.6	0.5		
5.x.x - Algebraic Thinking	2	81	0	6	9	11	22	52	3.0	0.1	58,404	0	9	14	19	28	31	2.6	0.4		
MULTIPLE CHOICE																					
1.x.x - Number Prop Oper	32	1,133	79	21	0				0.79	0.01	810,106	74	26	0				0.74	0.05		
2.x.x - Measurement	7	256	87	13	0				0.87	0.02	183,647	81	18	0				0.81	0.06		
3.x.x - Geometry	18	560	88	12	0				0.88	0.02	400,848	85	15	0				0.85	0.03		
4.x.x - Data Analysis & Probabilit	8	269	75	25	0				0.75	0.03	192,126	69	31	0				0.69	0.06		
5.x.x - Algebraic Thinking	11	302	83	17	0				0.83	0.02	217,089	78	22	0				0.78	0.05		



2008-2009
INTERIM PERFORMANCE REPORT
MATHEMATICS CORE CONTENT

School: Ashland Elementary School
 District: Fayette County
 Code: 165007
 Grade: 04

	No. Items	No. Observations	SCHOOL								Std. Err.	No. Observations	STATE						School -State Mean
			B	0	1	2	3	4	Mean	B			0	1	2	3	4	Mean	
OPEN RESPONSE																			
1.x.x - Number Prop Oper	4	128	0	5	12	28	24	31	2.7	0.1	73,656	0	17	24	29	19	12	1.9	0.8
2.x.x - Measurement	1	14	0	14	7	7	36	36	2.7	0.4	8,195	0	43	13	10	20	13	1.5	1.2
3.x.x - Geometry	2	99	0	7	13	11	16	53	2.9	0.1	57,352	0	11	20	17	19	33	2.4	0.5
4.x.x - Data Analysis & Probabilit	1	15	0	7	13	13	53	13	2.5	0.3	8,152	0	5	36	29	23	6	1.9	0.6
5.x.x - Algebraic Thinking	2	98	0	2	15	15	40	28	2.8	0.1	57,508	0	5	27	32	25	11	2.1	0.7
MULTIPLE CHOICE																			
1.x.x - Number Prop Oper	31	1,144	83	17	0				0.83	0.01	664,194	67	33	0				0.67	0.16
2.x.x - Measurement	7	242	83	17	0				0.83	0.03	139,170	62	38	0				0.62	0.21
3.x.x - Geometry	14	484	87	13	0				0.87	0.02	278,460	77	23	0				0.77	0.10
4.x.x - Data Analysis & Probabilit	12	522	85	15	0				0.85	0.02	303,394	71	29	0				0.71	0.14
5.x.x - Algebraic Thinking	11	440	84	16	0				0.84	0.02	253,829	69	31	0				0.69	0.15



2008-2009
INTERIM PERFORMANCE REPORT
MATHEMATICS CORE CONTENT

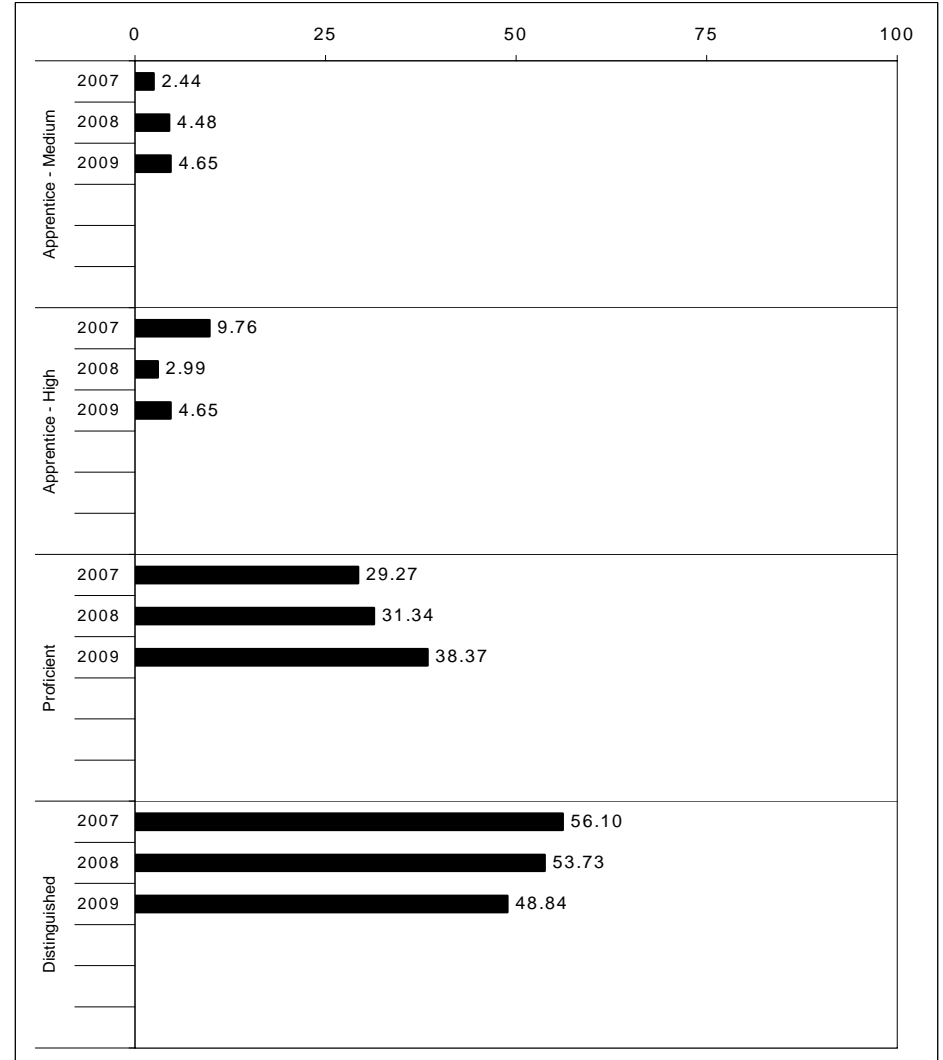
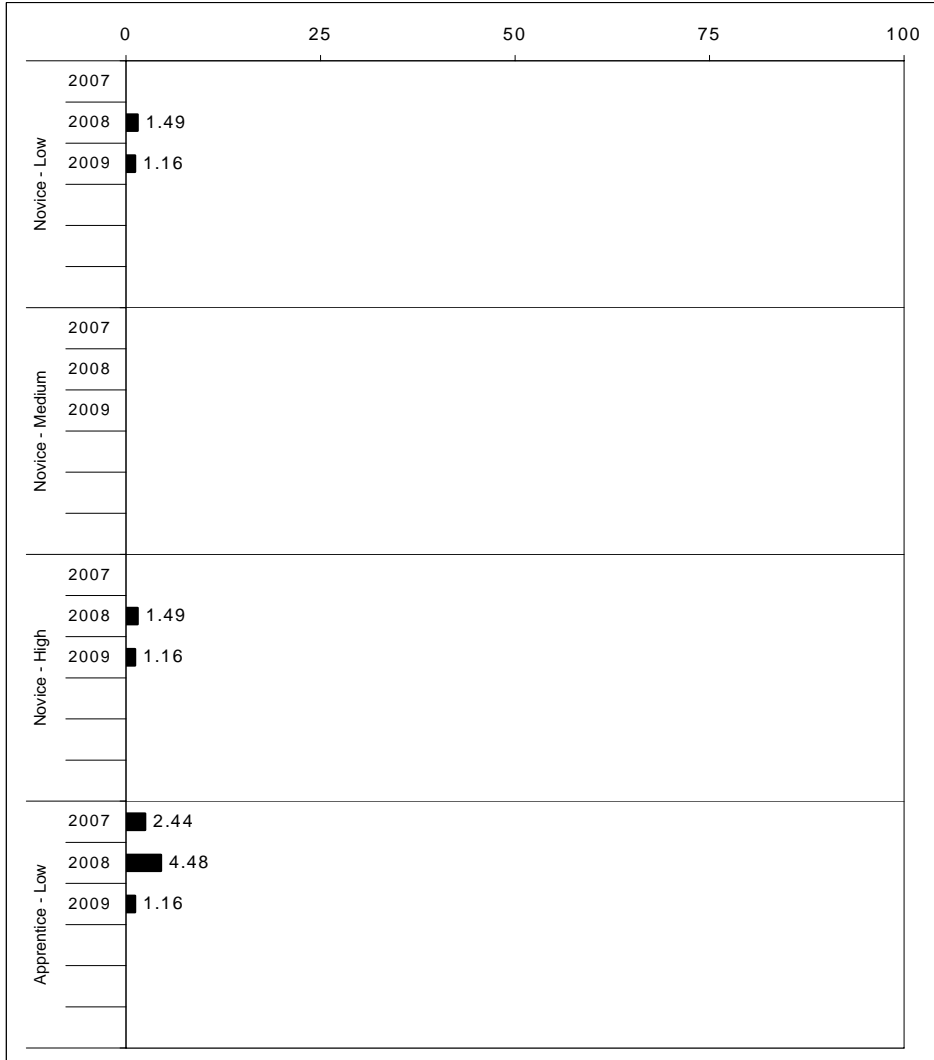
School: Ashland Elementary School
 District: Fayette County
 Code: 165007
 Grade: 05

	No. Items	No. Observations	SCHOOL								STATE								School -State Mean
			Percents						Mean	Std. Err.	Percents						Mean		
			B	0	1	2	3	4					No. Observations	B	0	1		2	3
OPEN RESPONSE																			
1.x.x - Number Prop Oper	4	110	0	5	7	14	20	54	3.1	0.1	73,199	0	8	20	18	25	29	2.5	0.6
2.x.x - Measurement	1	14	0	21	21	14	14	29	2.1	0.4	8,380	0	37	30	13	10	11	1.3	0.8
3.x.x - Geometry	2	80	0	0	15	41	29	15	2.4	0.1	56,900	0	6	24	30	26	14	2.2	0.2
4.x.x - Data Analysis & Probabilit	1	71	0	13	13	13	15	46	2.7	0.2	48,828	0	15	18	15	17	35	2.4	0.3
5.x.x - Algebraic Thinking	1	9							***		8,005	0	13	15	20	17	35	2.5	
MULTIPLE CHOICE																			
1.x.x - Number Prop Oper	29	937	Correct	Incorrect	Omit/Mult				0.77	0.02	643,144	Correct	Incorrect	Omit/Mult				0.63	0.14
2.x.x - Measurement	9	222	82	18	0				0.82	0.03	154,489	62	38	0				0.62	0.20
3.x.x - Geometry	14	403	88	12	0				0.88	0.02	276,516	78	22	0				0.78	0.10
4.x.x - Data Analysis & Probabilit	11	364	80	20	0				0.80	0.03	252,212	64	36	0				0.64	0.16
5.x.x - Algebraic Thinking	10	355	80	20	0				0.80	0.03	244,140	65	35	0				0.65	0.15



2008-2009
INTERIM PERFORMANCE REPORT
SCIENCE TREND DATA
Performance Level Percents

School: Ashland Elementary School
 District: Fayette County
 Code: 165007
 Grade: 04

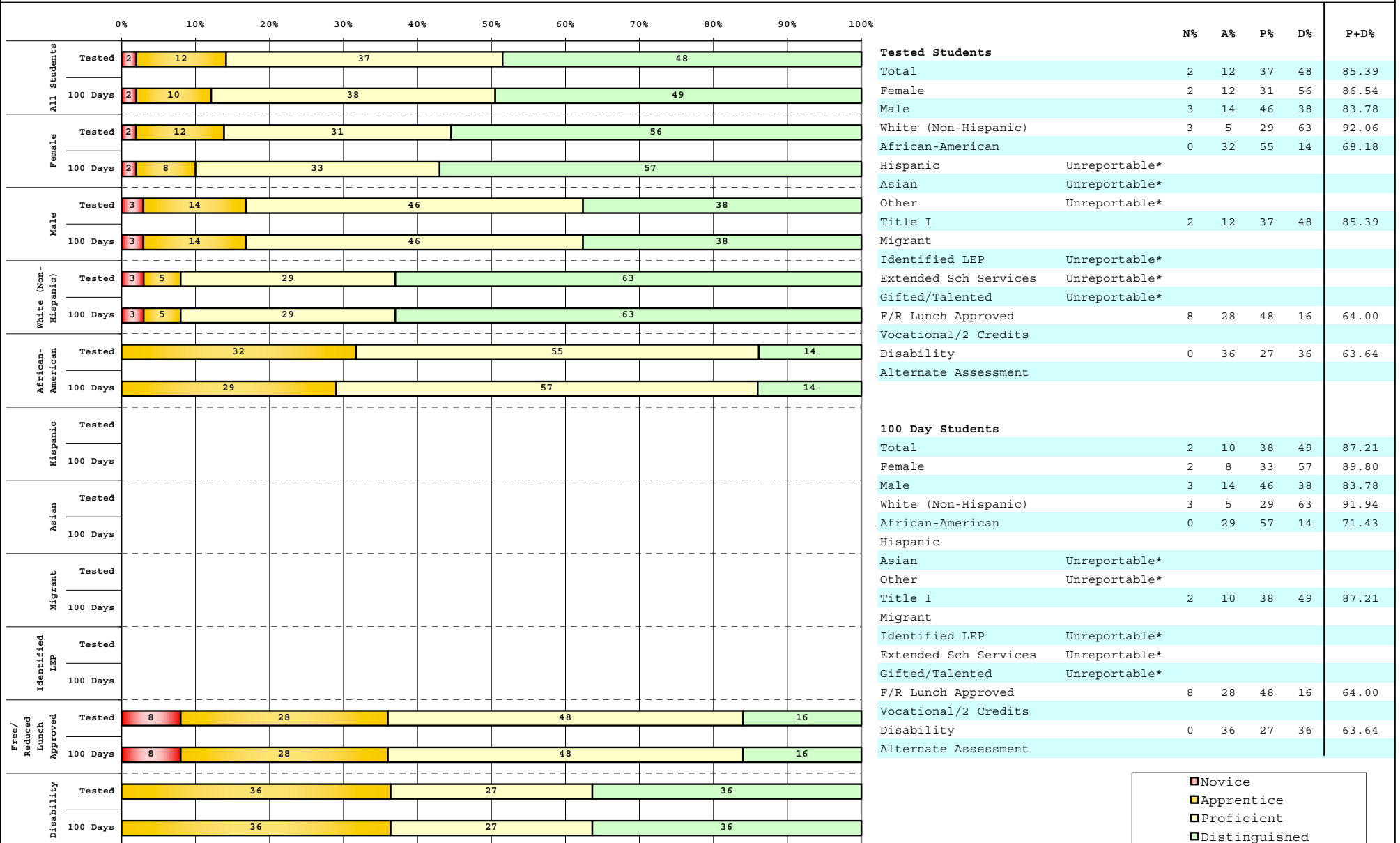


The horizontal bar represents the percent of students scoring at a performance level within a particular year. Percentages may not sum to 100% due to rounding.



2008-2009
INTERIM PERFORMANCE REPORT
SCIENCE DISAGGREGATION
Performance Level Percents

School: Ashland Elementary School
 District: Fayette County
 Code: 165007
 Grade: 04



■	Novice
■	Apprentice
■	Proficient
■	Distinguished

Percentage may not sum to 100% due to rounding. 'Unreportable*' indicates subpopulations with fewer than 10 students or subpopulations where all students score at the same performance level.



2008-2009
INTERIM PERFORMANCE REPORT
SCIENCE CORE CONTENT

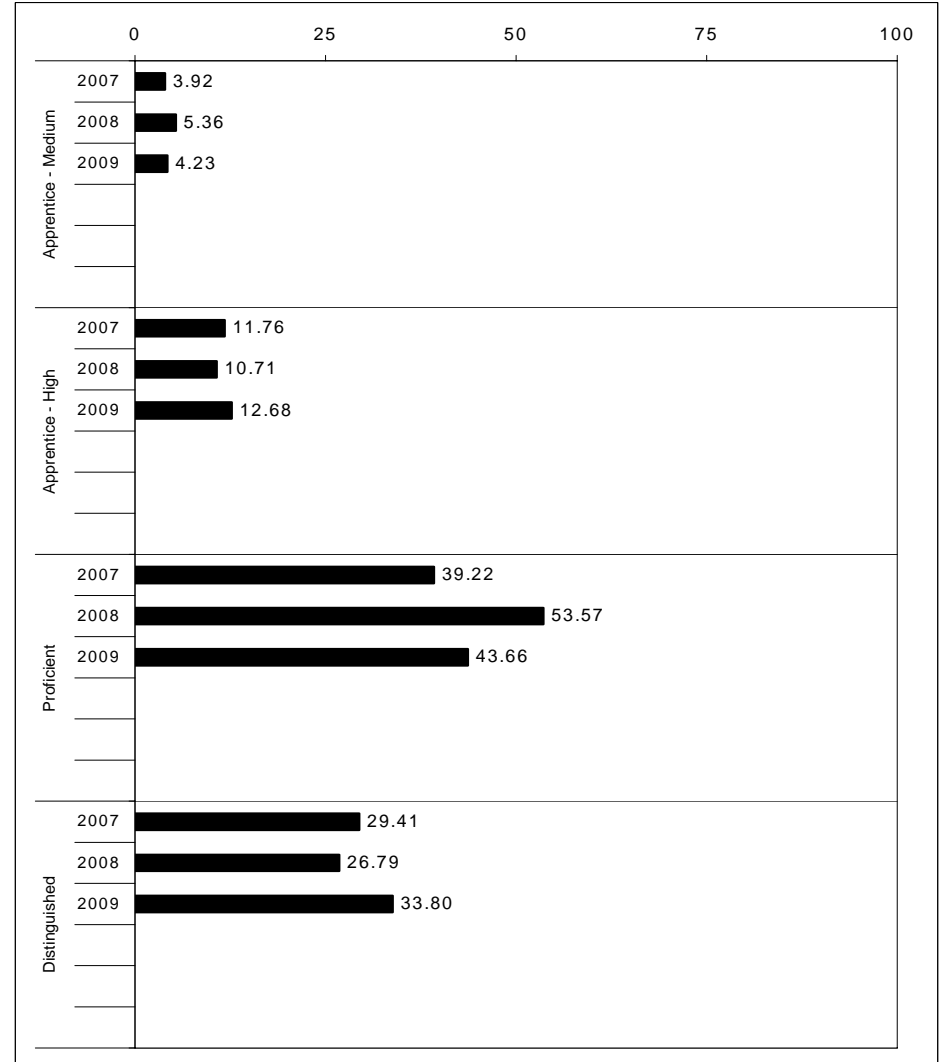
School: Ashland Elementary School
 District: Fayette County
 Code: 165007
 Grade: 04

	No. Items	No. Observations	SCHOOL								Mean	Std. Err.	No. Observations	STATE						Mean	School -State Mean
			B	0	1	2	3	4	B	0				1	2	3	4				
OPEN RESPONSE																					
1.x.x - Physical Science	2	29	0	10	21	34	24	10	2.0	0.2	16,337	0	17	19	42	17	5	1.7	0.3		
2.x.x - Earth Space Science	3	112	0	5	21	38	34	1	2.0	0.1	65,658	0	12	22	35	26	4	1.9	0.1		
3.x.x - Biological Science	3	114	0	0	4	25	56	14	2.8	0.1	65,506	0	2	11	33	44	9	2.5	0.3		
4.x.x - Unifying Concepts	2	98	0	1	7	19	49	23	2.9	0.1	57,508	0	3	13	33	35	15	2.5	0.4		
MULTIPLE CHOICE																					
1.x.x - Physical Science	18	680	85	15	0				0.85	0.01	393,336	82	18	0				0.81	0.04		
2.x.x - Earth Space Science	19	695	82	18	0				0.82	0.02	401,488	71	29	0				0.71	0.11		
3.x.x - Biological Science	22	807	83	17	0				0.83	0.01	467,138	78	22	0				0.78	0.05		
4.x.x - Unifying Concepts	14	553	92	9	0				0.92	0.02	319,534	84	15	0				0.84	0.08		



2008-2009
INTERIM PERFORMANCE REPORT
SOCIAL STUDIES TREND DATA
Performance Level Percents

School: Ashland Elementary School
 District: Fayette County
 Code: 165007
 Grade: 05

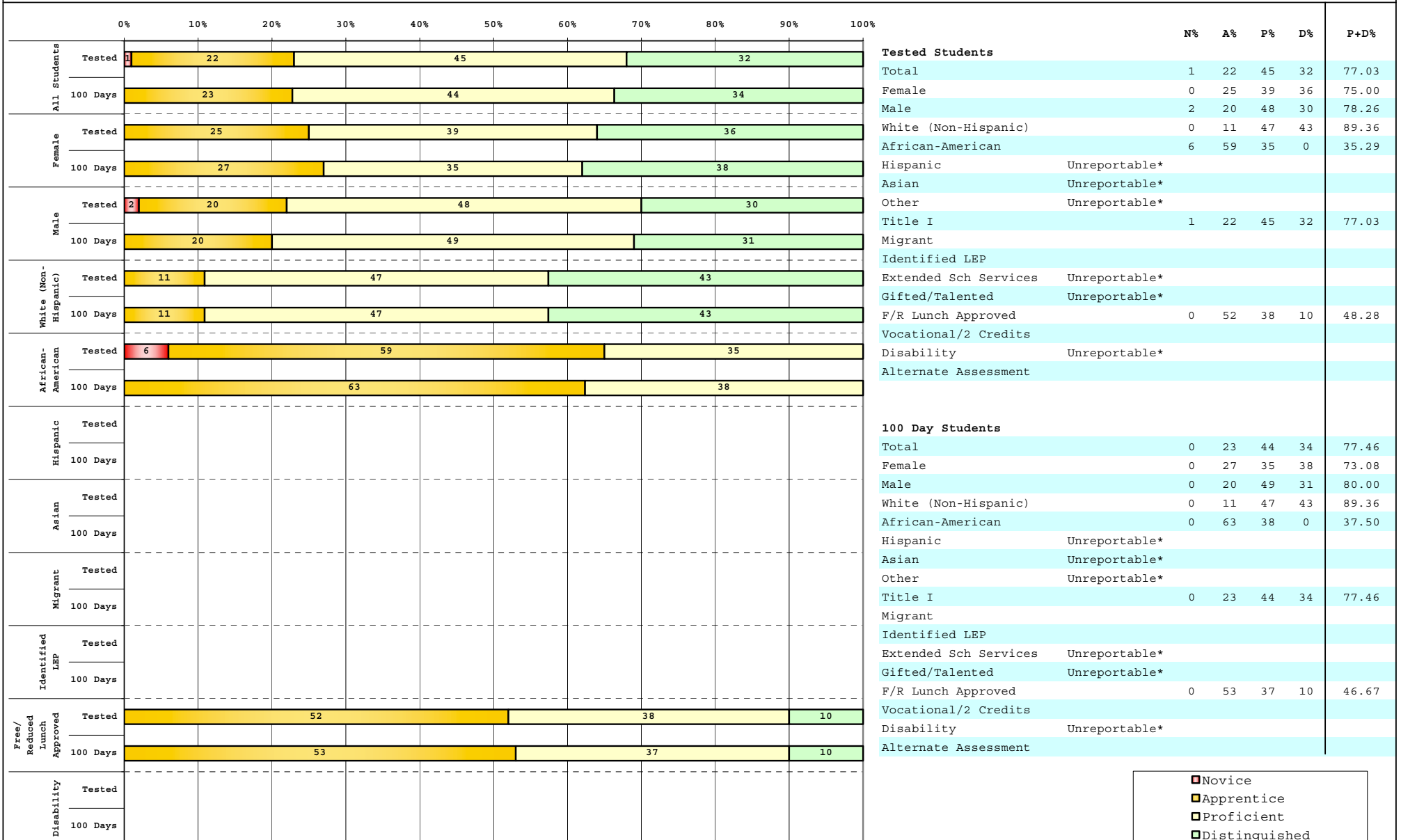


The horizontal bar represents the percent of students scoring at a performance level within a particular year. Percentages may not sum to 100% due to rounding.



2008-2009
INTERIM PERFORMANCE REPORT
SOCIAL STUDIES DISAGGREGATION
Performance Level Percents

School: Ashland Elementary School
 District: Fayette County
 Code: 165007
 Grade: 05



■	Novice
■	Apprentice
■	Proficient
■	Distinguished

Percentage may not sum to 100% due to rounding. 'Unreportable*' indicates subpopulations with fewer than 10 students or subpopulations where all students score at the same performance level.



2008-2009
INTERIM PERFORMANCE REPORT
SOCIAL STUDIES CORE CONTENT

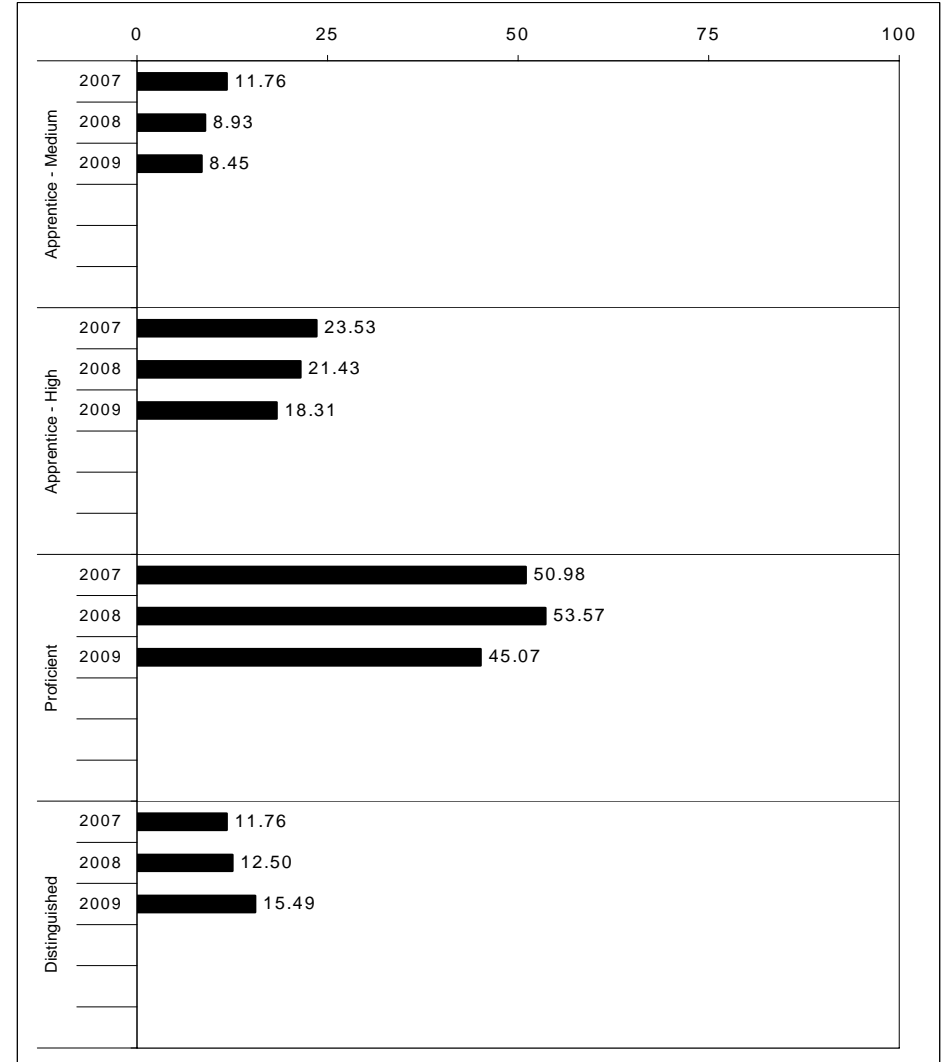
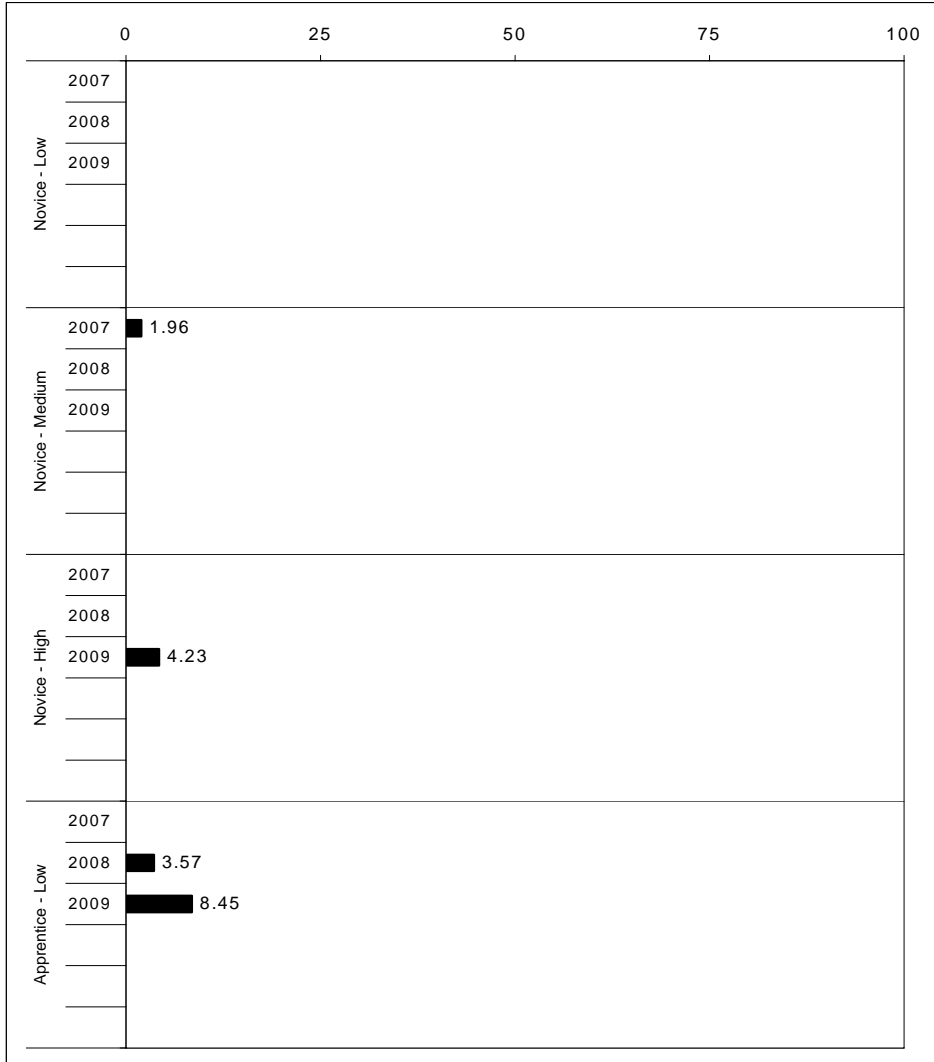
School: Ashland Elementary School
 District: Fayette County
 Code: 165007
 Grade: 05

	No. Items	No. Observations	SCHOOL							Mean	Std. Err.	No. Observations	STATE							Mean	School -State Mean
			B	0	1	2	3	4	B				0	1	2	3	4	Mean			
OPEN RESPONSE																					
1.x.x - Government & Civics	2	86	0	1	15	67	14	2	2.0	0.1	56,903	0	5	37	45	10	2	1.7	0.3		
2.x.x - Cultures & Societies	1	10	0	0	0	80	20	0	2.2	0.3	8,151	0	4	21	56	15	4	1.9	0.3		
3.x.x - Economics	1	71	0	6	14	55	21	4	2.0	0.1	48,828	0	11	33	41	12	3	1.6	0.4		
4.x.x - Geography	2	18	0	6	28	50	11	6	1.8	0.2	16,077	0	9	32	39	17	3	1.7	0.1		
5.x.x - Historical Perspective	3	99	0	1	19	66	13	1	1.9	0.1	65,353	0	7	35	46	10	2	1.7	0.2		
MULTIPLE CHOICE																					
1.x.x - Government & Civics	14	459	75	26	0				0.75	0.02	317,571	66	34	0				0.66	0.09		
2.x.x - Cultures & Societies	11	306	76	25	0				0.75	0.03	211,383	70	30	0				0.69	0.06		
3.x.x - Economics	11	370	78	22	0				0.78	0.02	252,215	73	27	0				0.73	0.05		
4.x.x - Geography	16	539	71	29	0				0.71	0.02	374,337	66	34	0				0.66	0.05		
5.x.x - Historical Perspective	27	857	81	19	0				0.81	0.02	586,076	69	31	0				0.69	0.12		



2008-2009
INTERIM PERFORMANCE REPORT
WRITING ON-DEMAND TREND DATA
Performance Level Percents

School: Ashland Elementary School
 District: Fayette County
 Code: 165007
 Grade: 05



The horizontal bar represents the percent of students scoring at a performance level within a particular year. Percentages may not sum to 100% due to rounding.



2008-2009
INTERIM PERFORMANCE REPORT
WRITING ON-DEMAND DISAGGREGATION
Performance Level Percents

School: Ashland Elementary School
 District: Fayette County
 Code: 165007
 Grade: 05

		0%	10%	20%	30%	40%	50%	60%	70%	80%	90%	100%	N%	A%	P%	D%	P+D%	
All Students	Tested	5	34				46				15							
	100 Days	4	35				45				15							
Female	Tested		32				46				21							
	100 Days		35				42				23							
Male	Tested	9	35				46				11							
	100 Days	7	36				47				11							
White (Non-Hispanic)	Tested	4	32				47				17							
	100 Days	4	32				47				17							
African-American	Tested	12	47				35				6							
	100 Days	6	50				38				6							
Hispanic	Tested																	
	100 Days																	
Asian	Tested																	
	100 Days																	
Migrant	Tested																	
	100 Days																	
Identified LEP	Tested																	
	100 Days																	
Free/Reduced Lunch Approved	Tested	7	52				31				10							
	100 Days	7	53				30				10							
Disability	Tested																	
	100 Days																	

		N%	A%	P%	D%	P+D%
Tested Students						
Total		5	34	46	15	60.81
Female		0	32	46	21	67.86
Male		9	35	46	11	56.52
White (Non-Hispanic)		4	32	47	17	63.83
African-American		12	47	35	6	41.18
Hispanic	Unreportable*					
Asian	Unreportable*					
Other	Unreportable*					
Title I		5	34	46	15	60.81
Migrant						
Identified LEP						
Extended Sch Services	Unreportable*					
Gifted/Talented	Unreportable*					
F/R Lunch Approved		7	52	31	10	41.38
Vocational/2 Credits						
Disability	Unreportable*					
Alternate Assessment						
100 Day Students						
Total		4	35	45	15	60.56
Female		0	35	42	23	65.38
Male		7	36	47	11	57.78
White (Non-Hispanic)		4	32	47	17	63.83
African-American		6	50	38	6	43.75
Hispanic	Unreportable*					
Asian	Unreportable*					
Other	Unreportable*					
Title I		4	35	45	15	60.56
Migrant						
Identified LEP						
Extended Sch Services	Unreportable*					
Gifted/Talented	Unreportable*					
F/R Lunch Approved		7	53	30	10	40.00
Vocational/2 Credits						
Disability	Unreportable*					
Alternate Assessment						

■ Novice
■ Apprentice
■ Proficient
■ Distinguished

Percentage may not sum to 100% due to rounding. 'Unreportable*' indicates subpopulations with fewer than 10 students or subpopulations where all students score at the same performance level.



2008-2009
INTERIM PERFORMANCE REPORT
WRITING ON-DEMAND CORE CONTENT

School: Ashland Elementary School
 District: Fayette County
 Code: 165007
 Grade: 05

WRITING PROMPT	SCHOOL												STATE												School -State Mean
	No. Observations	Percents											Mean	Percents											
	B	0	1	2	3	4	5	6	7	8		B		0	1	2	3	4	5	6	7	8			
Inform																									
1.X.X - Content	24	0	0	0	8	13	21	13	29	13	4	4.96	0	1	1	9	9	34	18	21	4	2	4.43	0.53	
2.X.X - Structure	24	0	0	0	8	13	25	17	21	13	4	4.83	0	1	2	9	10	35	19	19	3	1	4.33	0.50	
3.X.X - Convention	24	0	0	0	4	17	25	21	17	13	4	4.83	0	0	0	12	11	34	19	19	3	1	4.38	0.45	
Narrate for a purpose																									
1.X.X - Content	23	0	0	0	13	9	30	13	35	0	0	4.48	0	1	1	10	9	36	18	21	3	1	4.35	0.13	
2.X.X - Structure	23	0	0	0	9	17	26	13	35	0	0	4.48	0	1	2	10	10	37	17	19	3	1	4.27	0.21	
3.X.X - Convention	23	0	0	0	9	13	30	13	35	0	0	4.52	0	0	0	12	10	36	18	19	3	1	4.33	0.19	
Persuade																									
1.X.X - Content	24	0	4	4	21	8	21	25	8	8	0	3.88	0	1	1	8	8	33	19	21	5	3	4.50	-0.62	
2.X.X - Structure	24	0	4	4	21	8	29	17	8	8	0	3.79	0	2	2	9	10	33	19	20	5	2	4.42	-0.63	
3.X.X - Convention	24	0	0	0	21	17	21	25	8	8	0	4.08	0	0	0	11	10	32	19	20	5	2	4.50	-0.42	

MULTIPLE CHOICE	No. Items	SCHOOL						STATE						School -State Mean
		No. Observations	Percents			Mean	Std. Err.	No. Observations	Percents			Mean		
		Correct	Incorrect	Omit/Mult					Correct	Incorrect	Omit/Mult			
4.x.x - Writing Process	52	852	82	18	0	0.82	0.02	585,936	73	27	0	0.73	0.09	
4.10.x - Revising	16	193	75	25	0	0.75	0.03	130,317	66	34	0	0.66	0.09	
4.11.x - Editing	36	659	84	16	0	0.84	0.02	455,619	75	24	0	0.75	0.09	