



Interim Performance Report

In March 2009, the Kentucky General Assembly passed Senate Bill 1 (SB1) that was subsequently signed into law by the Governor. SB1 calls for a significant overhaul of the state's assessment and accountability system. The new assessment system begins in the spring of 2012. The school years of 2008-2009, 2009-2010 and 2010-2011 are described in SB1 as an interim period. This three-year period allows Kentucky to develop the new assessment system and to carry on state and federal testing requirements.

The Interim Performance Report includes the Kentucky Core Content Test (KCCT) in Reading (grades 3-8 and 10), Mathematics (grades 3-8 and 11), Science (grades 4, 7 and 11), Social Studies (grades 5, 8 and 11) and Writing On-Demand (grades 5, 8 and 12). The KCCT is based on the Kentucky Core Content for Assessment (Version 4.1) and contains multiple choice and open response questions. The Writing On-Demand test uses writing prompts that require students to craft a piece of writing in a 60 minute period.

The KCCT is developed under the direction of content advisory committees of Kentucky educators who draft, review and select test questions. All test items are reviewed by a bias review committee to enhance the fairness of items for all Kentucky students.

The KCCT continues to fulfill the requirements of the federal statute known as the No Child Left Behind Act of 2001. A separate accountability report for No Child Left Behind (NCLB) is published by the Kentucky Department of Education.

The Interim Performance Report focuses entirely on the five state-required content areas and provides data for schools or districts. The data in this report is not used directly for state accountability; although, these results can fulfill the requirements of Senate Bill 168 from 2002 and may be used by schools or districts for their own local accountability needs.

Performance standards are based on descriptions of Novice, Apprentice, Proficient and Distinguished (NAPD) student performance levels specific to the content area and grade being assessed. The performance standards, in conjunction with Kentucky's Core Content for Assessment, should allow instruction to better focus on the content area to be taught and on how well students must demonstrate achievement in each content area.

Reporting Changes for 2009

Based on SB1, Kentucky will not be reporting state accountability and academic indices as in the past. The report does have several familiar pages with performance level (NAPD) trend, core content and disaggregation data per content area. Districts and schools will still see distributions of how students scored in the Novice (with sublevels), Apprentice (with sublevels), Proficient and Distinguished performance levels.

Confidentiality Changes

Due to federal regulations around the Family Education Rights and Privacy Act (FERPA), the numbers of students have been removed. Though there is a need to report as much data as possible, there is also a paramount need to maintain the confidential aspects of individual scores. When scores are reported in what is commonly called "small cells" where very few students may be categorized, there is the possibility of revealing individual scores when numbers are reported. Numbers are reported to each district in a confidential report that accompanies the public Interim Performance Report.

2008-2009

INTERIM PERFORMANCE REPORT

School: Athens-Chilesburg Elementary

District: Fayette County

Code: 165045

Grade: PRIMARY-05

CONTENTS OF THIS REPORT

Introduction	1
Academic Trend Data	
Reading Results	2-8
Mathematics Results	9-15
Science Results	16-18
Social Studies Results	19-21
Writing Results	22-24

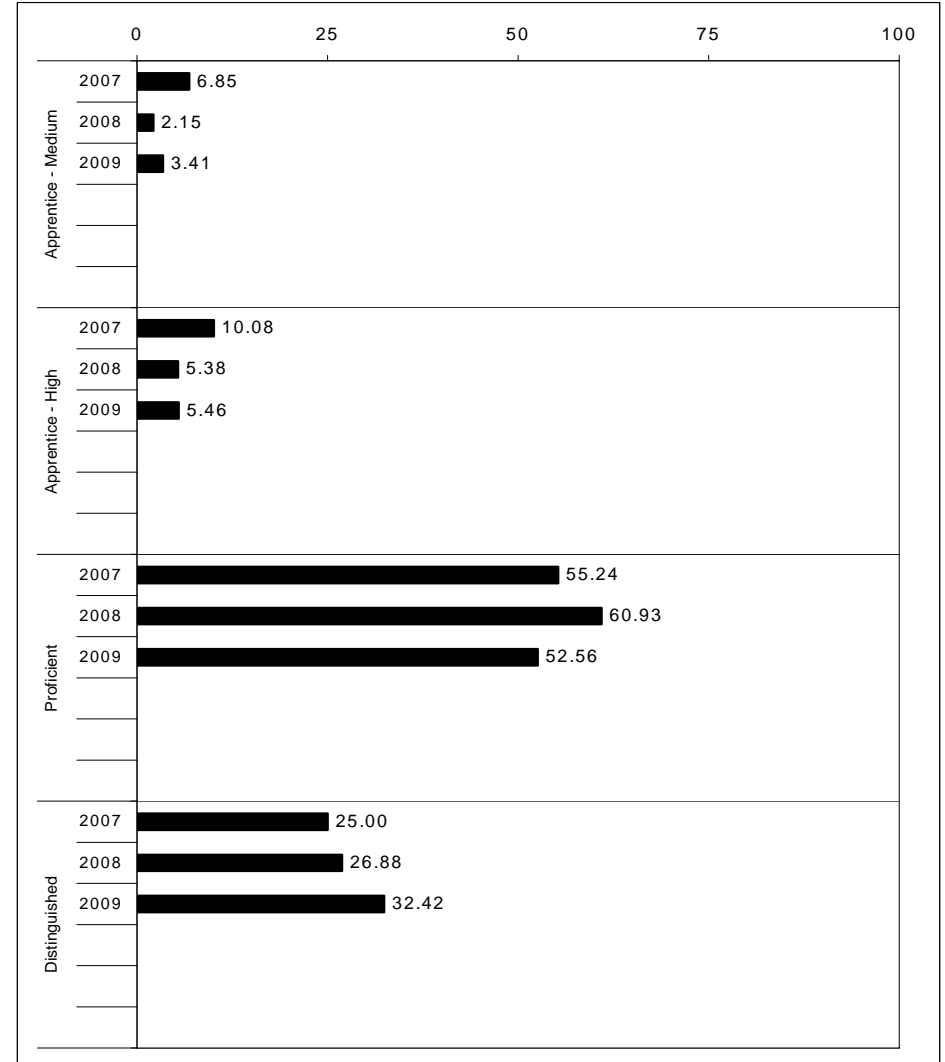
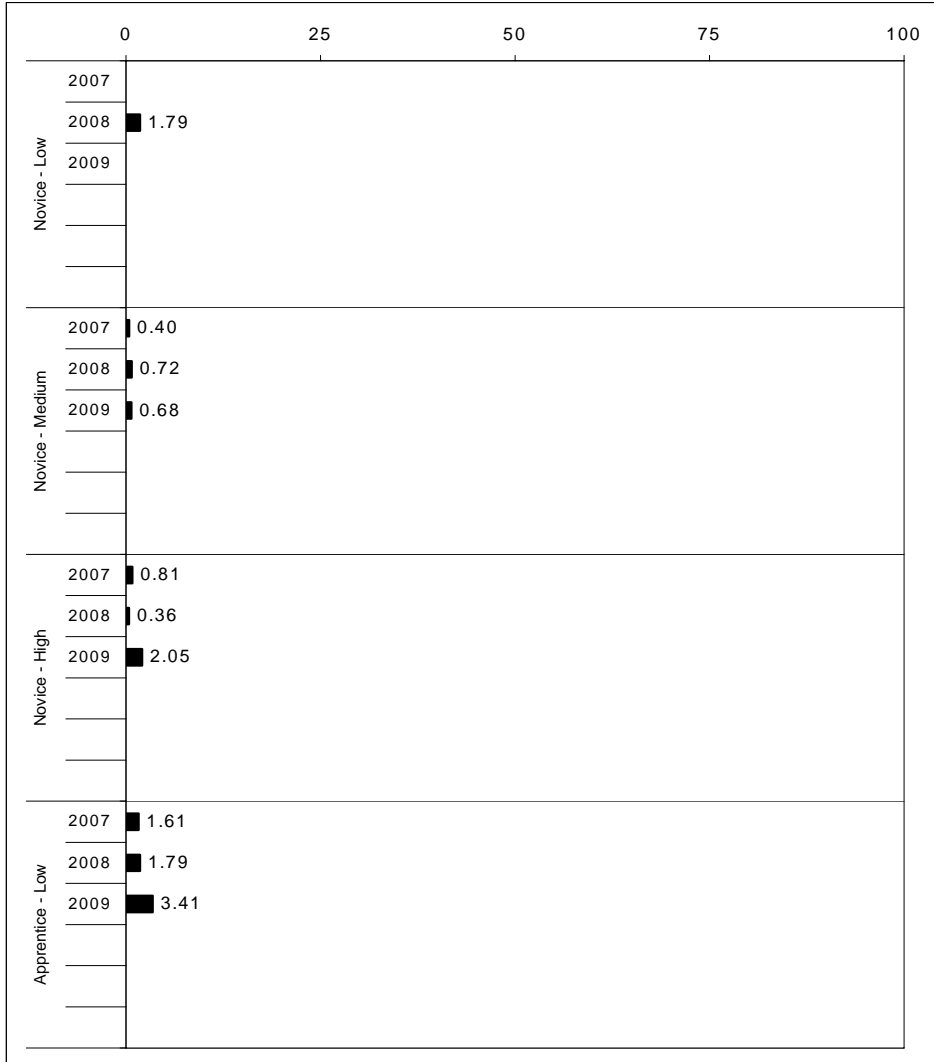
For more information, refer to the 2009 Interim Assessment Interpretative Guide on the Kentucky Department of Education Web site (www.education.ky.gov).





2008-2009
INTERIM PERFORMANCE REPORT
READING TREND DATA
Performance Level Percents

School: Athens-Chilesburg Elementary
 District: Fayette County
 Code: 165045
 Grade: ELEMENTARY



The horizontal bar represents the percent of students scoring at a performance level within a particular year. Percentages may not sum to 100% due to rounding.

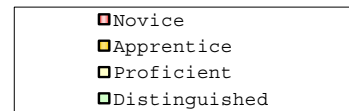


**2008-2009
INTERIM PERFORMANCE REPORT
READING DISAGGREGATION
Performance Level Percents**

School: Athens-Chilesburg Elementary
District: Fayette County
Code: 165045
Grade: 03

		0%	10%	20%	30%	40%	50%	60%	70%	80%	90%	100%	N%	A%	P%	D%	P+D%		
All Students	Tested	4	13	53				30											
	Accountable	4	13	51				32											
Female	Tested	4	6	48				42											
	Accountable	4	6	48				42											
Male	Tested	5	18	56				21											
	Accountable	3	19	54				24											
White (Non-Hispanic)	Tested	3	9	51				37											
	Accountable	2	9	49				40											
African-American	Tested	8	17	67				8											
	Accountable	9	18	64				9											
Hispanic	Tested																		
	Accountable																		
Asian	Tested	23		69				8											
	Accountable	23		69				8											
Migrant	Tested																		
	Accountable																		
Identified LEP	Tested																		
	Accountable																		
Free/Reduced Lunch Approved	Tested	22		13	57				9										
	Accountable	18		14	59				9										
Disability	Tested	20		20		60													
	Accountable																		

		N%	A%	P%	D%	P+D%
Tested Students						
Total		4	13	53	30	82.76
Female		4	6	48	42	90.00
Male		5	18	56	21	77.27
White (Non-Hispanic)		3	9	51	37	87.36
African-American		8	17	67	8	75.00
Hispanic						
Asian		0	23	69	8	76.92
Other	Unreportable*					
Title I						
Migrant	Unreportable*					
Identified LEP	Unreportable*					
Extended Sch Services		8	42	42	8	50.00
Gifted/Talented		0	0	42	58	100.00
F/R Lunch Approved		22	13	57	9	65.22
Vocational/2 Credits						
Disability		20	20	60	0	60.00
Alternate Assessment	Unreportable*					
NCLB Accountable Students						
Total		4	13	51	32	83.49
Female		4	6	48	42	90.00
Male		3	19	54	24	77.97
White (Non-Hispanic)		2	9	49	40	88.89
African-American		9	18	64	9	72.73
Hispanic						
Asian		0	23	69	8	76.92
Other	Unreportable*					
Title I						
Migrant	Unreportable*					
Identified LEP	Unreportable*					
Extended Sch Services		5	41	45	9	54.55
Gifted/Talented		0	0	42	58	100.00
F/R Lunch Approved		18	14	59	9	68.18
Vocational/2 Credits						
Disability	Unreportable*					
Alternate Assessment	Unreportable*					



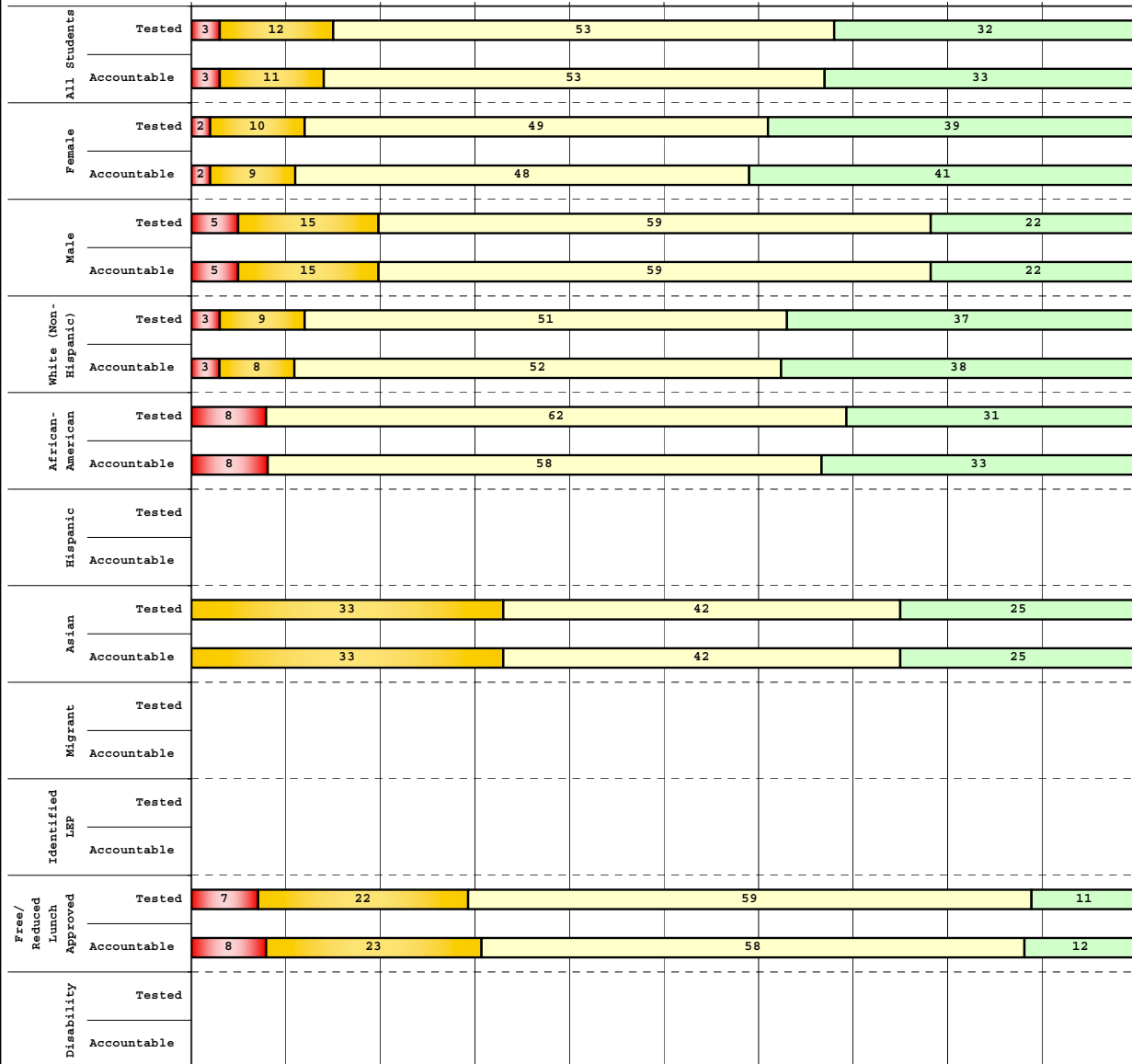
Percentage may not sum to 100% due to rounding. 'Unreportable*' indicates subpopulations with fewer than 10 students or subpopulations where all students score at the same performance level.



**2008-2009
INTERIM PERFORMANCE REPORT
READING DISAGGREGATION
Performance Level Percents**

School: Athens-Chilesburg Elementary
District: Fayette County
Code: 165045
Grade: 04

0% 10% 20% 30% 40% 50% 60% 70% 80% 90% 100%

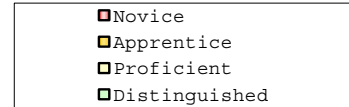


Tested Students

	N%	A%	P%	D%	P+D%
Total	3	12	53	32	85.00
Female	2	10	49	39	88.14
Male	5	15	59	22	80.49
White (Non-Hispanic)	3	9	51	37	88.24
African-American	8	0	62	31	92.31
Hispanic	Unreportable*				
Asian	0	33	42	25	66.67
Other	Unreportable*				
Title I					
Migrant					
Identified LEP	Unreportable*				
Extended Sch Services	10	24	62	5	66.67
Gifted/Talented	0	0	28	72	100.00
F/R Lunch Approved	7	22	59	11	70.37
Vocational/2 Credits					
Disability	Unreportable*				
Alternate Assessment	Unreportable*				

NCLB Accountable Students

	N%	A%	P%	D%	P+D%
Total	3	11	53	33	85.57
Female	2	9	48	41	89.29
Male	5	15	59	22	80.49
White (Non-Hispanic)	3	8	52	38	89.39
African-American	8	0	58	33	91.67
Hispanic	Unreportable*				
Asian	0	33	42	25	66.67
Other	Unreportable*				
Title I					
Migrant					
Identified LEP	Unreportable*				
Extended Sch Services	10	25	60	5	65.00
Gifted/Talented	0	0	28	72	100.00
F/R Lunch Approved	8	23	58	12	69.23
Vocational/2 Credits					
Disability	Unreportable*				
Alternate Assessment	Unreportable*				



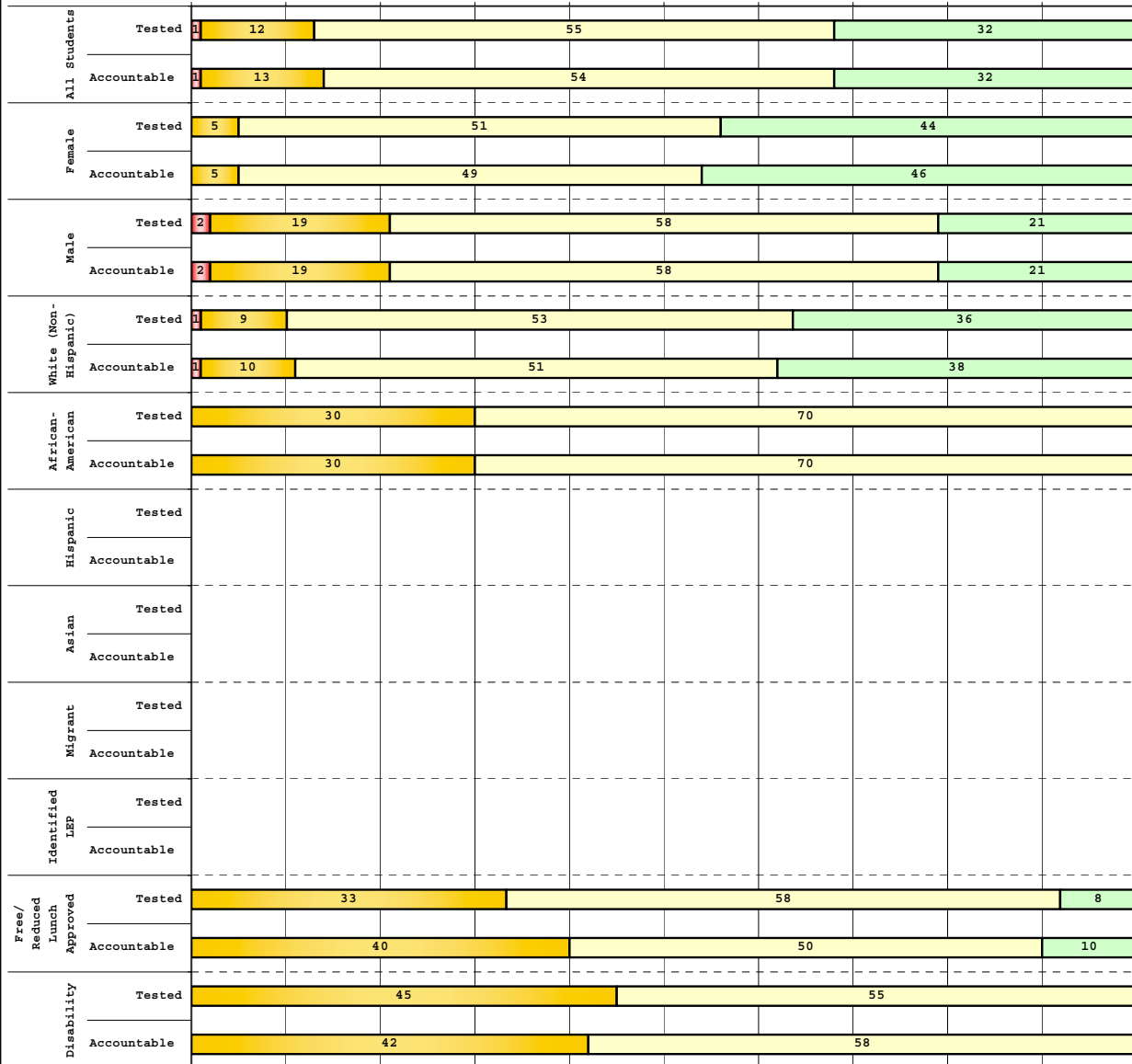
Percentage may not sum to 100% due to rounding. 'Unreportable*' indicates subpopulations with fewer than 10 students or subpopulations where all students score at the same performance level.



**2008-2009
INTERIM PERFORMANCE REPORT
READING DISAGGREGATION
Performance Level Percents**

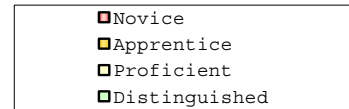
School: Athens-Chilesburg Elementary
District: Fayette County
Code: 165045
Grade: 05

0% 10% 20% 30% 40% 50% 60% 70% 80% 90% 100%



Tested Students

	N%	A%	P%	D%	P+D%
Total	1	12	55	32	86.81
Female	0	5	51	44	95.35
Male	2	19	58	21	79.17
White (Non-Hispanic)	1	9	53	36	89.33
African-American	0	30	70	0	70.00
Hispanic					
Asian					
Other					
Title I					
Migrant					
Identified LEP					
Extended Sch Services					
Gifted/Talented	0	3	44	53	97.06
F/R Lunch Approved	0	33	58	8	66.67
Vocational/2 Credits					
Disability	0	45	55	0	54.55
Alternate Assessment					
NCLB Accountable Students					
Total	1	13	54	32	86.21
Female	0	5	49	46	94.87
Male	2	19	58	21	79.17
White (Non-Hispanic)	1	10	51	38	88.89
African-American	0	30	70	0	70.00
Hispanic					
Asian					
Other					
Title I					
Migrant					
Identified LEP					
Extended Sch Services					
Gifted/Talented	0	3	44	53	97.06
F/R Lunch Approved	0	40	50	10	60.00
Vocational/2 Credits					
Disability	0	42	58	0	58.33
Alternate Assessment					



Percentage may not sum to 100% due to rounding. 'Unreportable*' indicates subpopulations with fewer than 10 students or subpopulations where all students score at the same performance level.



2008-2009
INTERIM PERFORMANCE REPORT
READING CORE CONTENT

School: Athens-Chilesburg Elementary
 District: Fayette County
 Code: 165045
 Grade: 03

	No. Items	No. Observations	SCHOOL								Std. Err.	No. Observations	STATE								School -State Mean
			B	0	1	2	3	4	Mean	B			0	1	2	3	4	Mean			
OPEN RESPONSE																					
2.0.x - Developing Understanding	2	214	0	6	28	48	17	2	1.8	0.1	100,212	0	10	30	44	14	2	1.7	0.1		
3.0.x - Interpreting Text	2	214	0	6	28	48	17	2	1.8	0.1	100,212	0	10	30	44	14	2	1.7	0.1		
MULTIPLE CHOICE																					
1.0.x - Forming a Foundation	32	843	88	12	0				0.88	0.01	392,589	83	17	0				0.83	0.05		
2.0.x - Developing Understanding	89	2,115	83	17	0				0.83	0.01	993,477	80	20	0				0.80	0.03		
3.0.x - Interpreting Text	31	991	84	16	0				0.84	0.01	468,115	77	23	0				0.77	0.07		
5.0.x - Critical Stance	15	458	83	17	0				0.83	0.02	208,359	79	21	0				0.79	0.04		



2008-2009
INTERIM PERFORMANCE REPORT
READING CORE CONTENT

School: Athens-Chilesburg Elementary
 District: Fayette County
 Code: 165045
 Grade: 04

	No. Items	No. Observations	SCHOOL							Mean	Std. Err.	No. Observations	STATE							Mean	School -State Mean
			B	0	1	2	3	4	B				0	1	2	3	4				
OPEN RESPONSE																					
2.0.x - Developing Understanding	5	159	0	1	13	45	33	8	2.3	0.1	81,849	0	3	24	52	18	3	1.9	0.4		
3.0.x - Interpreting Text	6	255	0	1	13	37	41	8	2.4	0.1	131,199	0	4	22	45	23	5	2.0	0.4		
MULTIPLE CHOICE																					
1.0.x - Forming a Foundation	34	796	75	25	0				0.75	0.02	401,452	72	28	0				0.71	0.04		
2.0.x - Developing Understanding	76	1,683	76	24	0				0.76	0.01	868,422	73	27	0				0.73	0.03		
3.0.x - Interpreting Text	29	546	82	18	0				0.82	0.02	278,648	79	21	0				0.79	0.03		
5.0.x - Critical Stance	9	300	82	18	0				0.82	0.03	155,704	74	26	0				0.74	0.08		



2008-2009
INTERIM PERFORMANCE REPORT
READING CORE CONTENT

School: Athens-Chilesburg Elementary
 District: Fayette County
 Code: 165045
 Grade: 05

	No. Items	No. Observations	SCHOOL								Mean	Std. Err.	No. Observations	STATE								Mean	School -State Mean
			B	0	1	2	3	4	B	0				1	2	3	4						
OPEN RESPONSE																							
2.0.x - Developing Understanding	6	157	0	1	22	42	22	13	2.3	0.1	89,507	0	5	23	48	20	5	2.0	0.3				
3.0.x - Interpreting Text	6	225	0	2	17	48	24	9	2.2	0.1	130,403	0	5	21	50	19	4	2.0	0.2				
MULTIPLE CHOICE																							
1.0.x - Forming a Foundation	28	466	83	17	0				0.83	0.02	268,187	74	26	0				0.74	0.09				
2.0.x - Developing Understanding	71	1,423	86	14	0				0.86	0.01	823,068	80	20	0				0.80	0.06				
3.0.x - Interpreting Text	27	599	88	12	0				0.88	0.02	341,653	81	19	0				0.81	0.07				
5.0.x - Critical Stance	17	528	85	15	0				0.84	0.02	300,671	75	25	0				0.75	0.09				



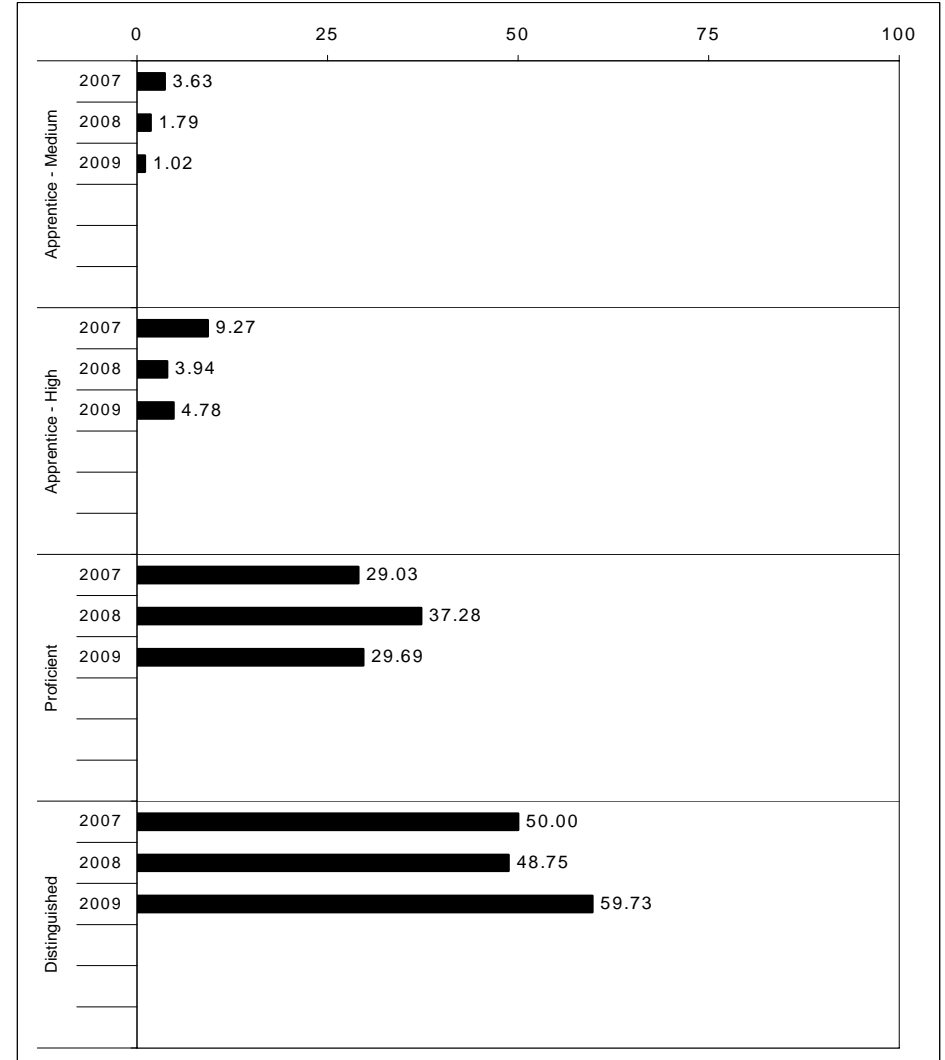
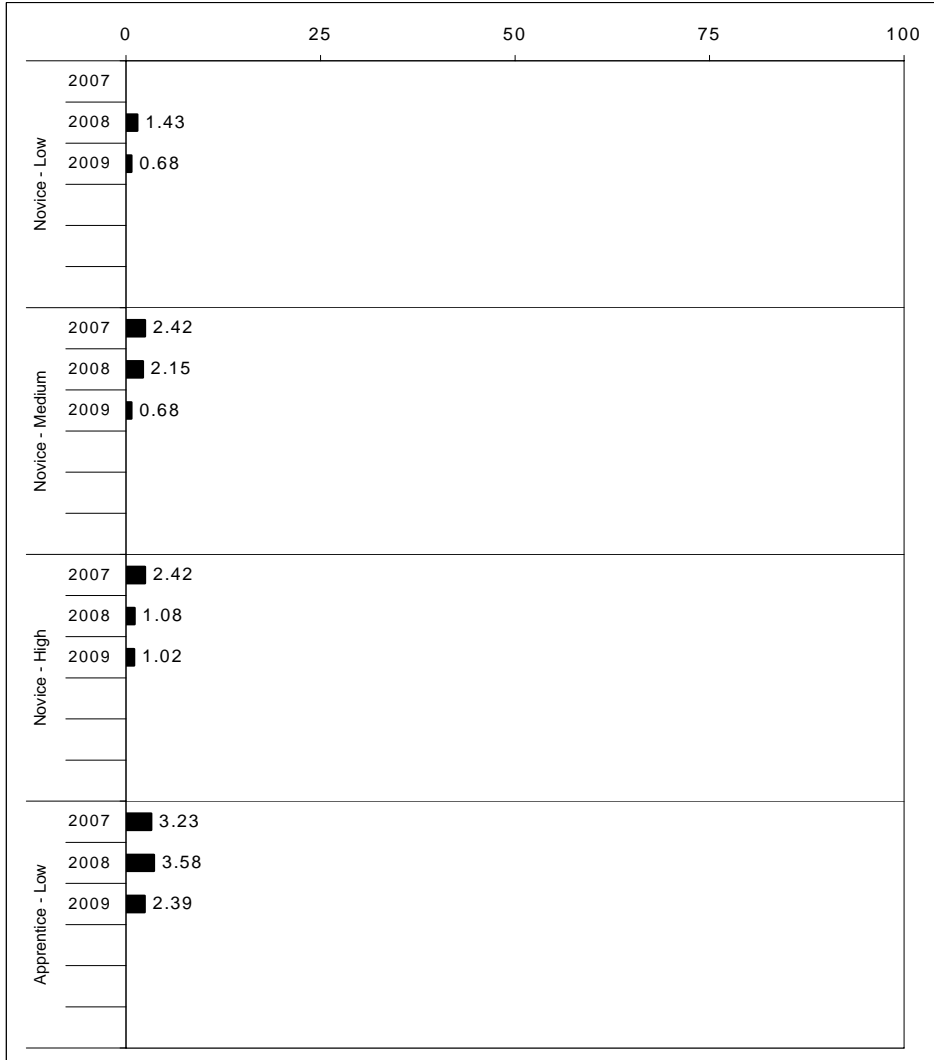
2008-2009
INTERIM PERFORMANCE REPORT
MATHEMATICS TREND DATA
Performance Level Percents

School: Athens-Chilesburg Elementary

District: Fayette County

Code: 165045

Grade: ELEMENTARY



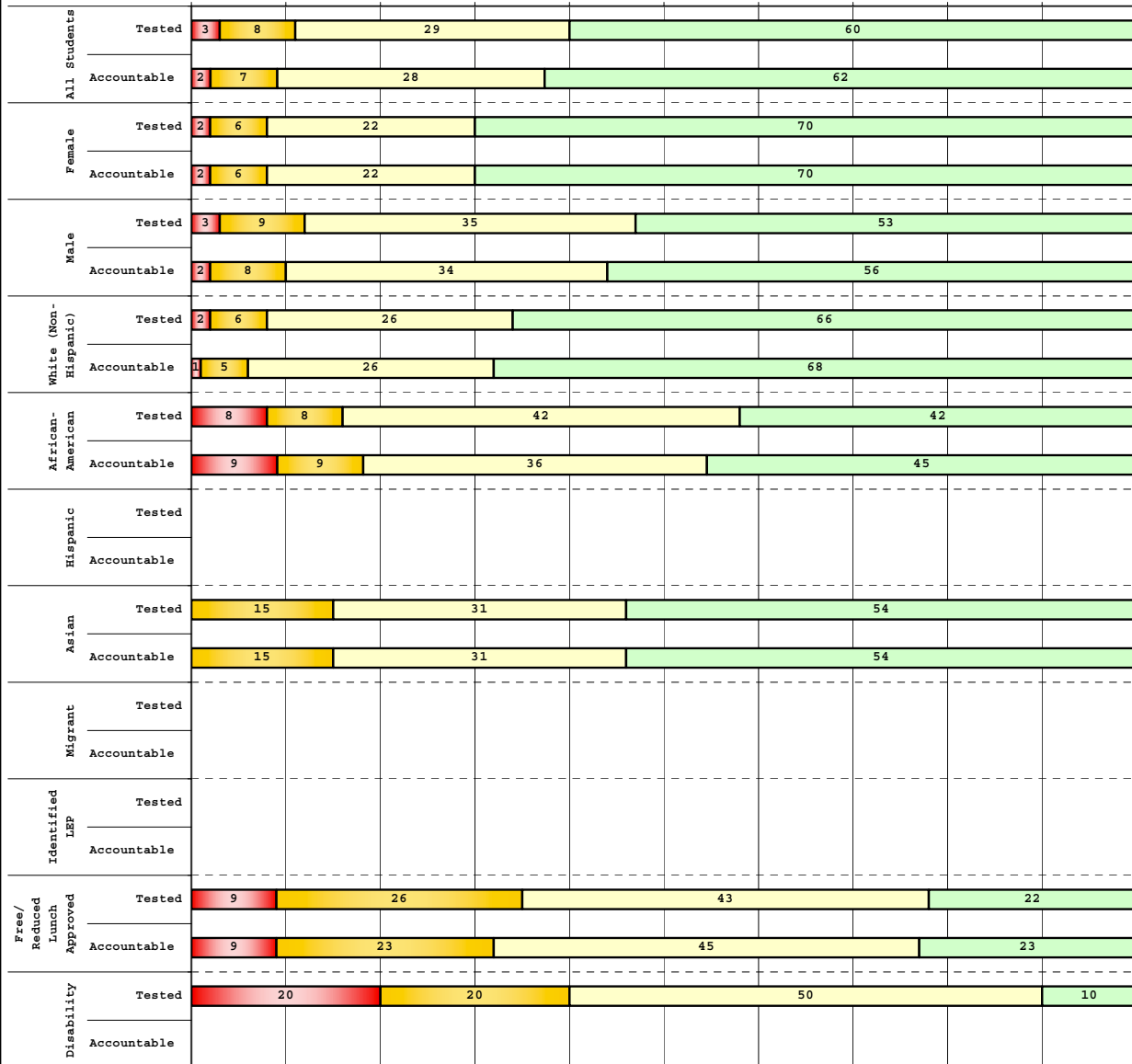
The horizontal bar represents the percent of students scoring at a performance level within a particular year. Percentages may not sum to 100% due to rounding.



2008-2009
INTERIM PERFORMANCE REPORT
MATHEMATICS DISAGGREGATION
Performance Level Percents

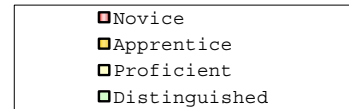
School: Athens-Chilesburg Elementary
 District: Fayette County
 Code: 165045
 Grade: 03

0% 10% 20% 30% 40% 50% 60% 70% 80% 90% 100%



Tested Students

	N%	A%	P%	D%	P+D%
Total	3	8	29	60	89.66
Female	2	6	22	70	92.00
Male	3	9	35	53	87.88
White (Non-Hispanic)	2	6	26	66	91.95
African-American	8	8	42	42	83.33
Hispanic					
Asian	0	15	31	54	84.62
Other	Unreportable*				
Title I	Unreportable*				
Migrant	Unreportable*				
Identified LEP	Unreportable*				
Extended Sch Services	8	25	58	8	66.67
Gifted/Talented	Unreportable*				
F/R Lunch Approved	9	26	43	22	65.22
Vocational/2 Credits	Unreportable*				
Disability	20	20	50	10	60.00
Alternate Assessment	Unreportable*				
NCLB Accountable Students					
Total	2	7	28	62	90.83
Female	2	6	22	70	92.00
Male	2	8	34	56	89.83
White (Non-Hispanic)	1	5	26	68	93.83
African-American	9	9	36	45	81.82
Hispanic					
Asian	0	15	31	54	84.62
Other	Unreportable*				
Title I	Unreportable*				
Migrant	Unreportable*				
Identified LEP	Unreportable*				
Extended Sch Services	5	23	64	9	72.73
Gifted/Talented	Unreportable*				
F/R Lunch Approved	9	23	45	23	68.18
Vocational/2 Credits	Unreportable*				
Disability	Unreportable*				
Alternate Assessment	Unreportable*				



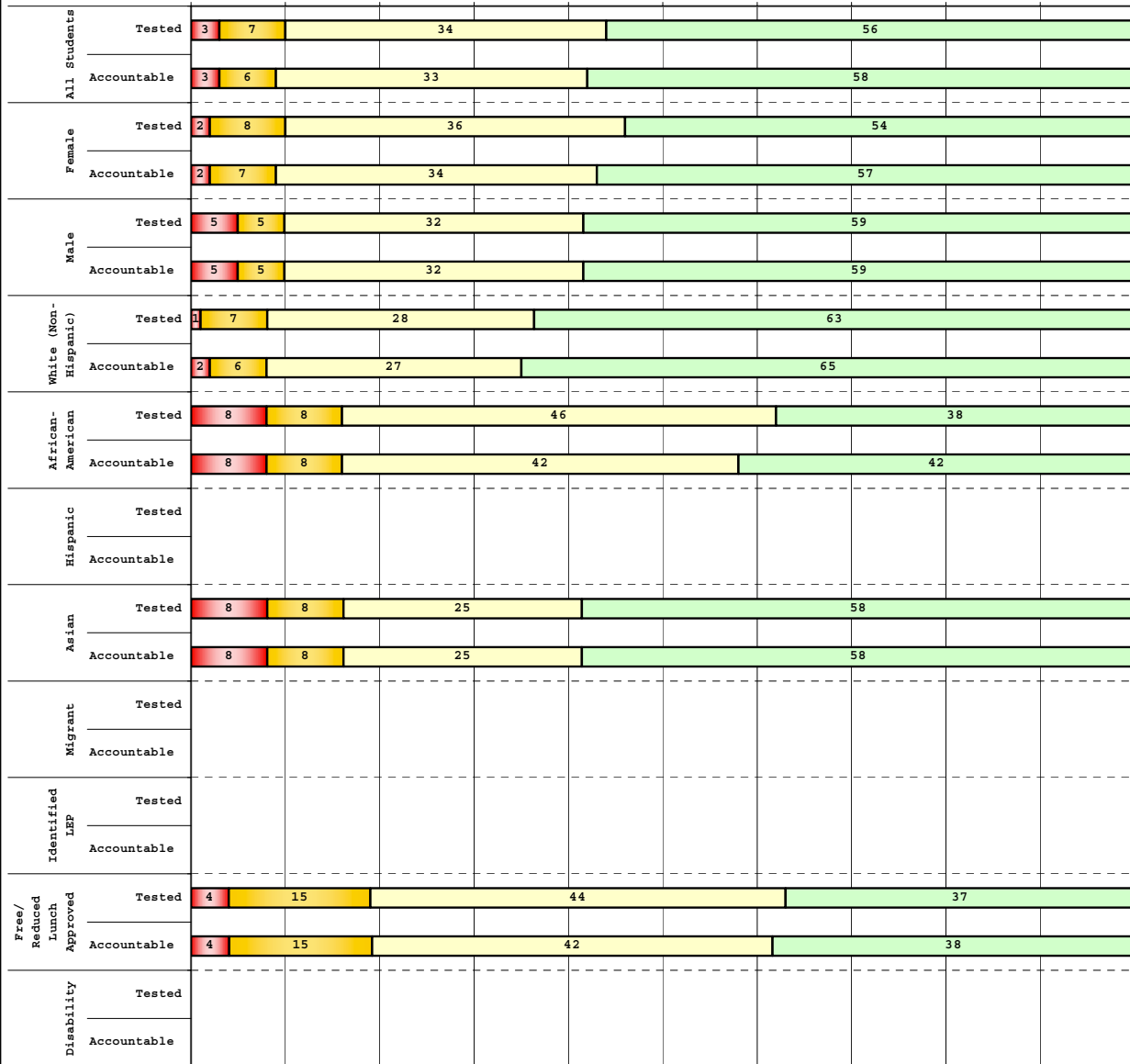
Percentage may not sum to 100% due to rounding. 'Unreportable*' indicates subpopulations with fewer than 10 students or subpopulations where all students score at the same performance level.



2008-2009
INTERIM PERFORMANCE REPORT
MATHEMATICS DISAGGREGATION
Performance Level Percents

School: Athens-Chilesburg Elementary
 District: Fayette County
 Code: 165045
 Grade: 04

0% 10% 20% 30% 40% 50% 60% 70% 80% 90% 100%



Tested Students

	N%	A%	P%	D%	P+D%
Total	3	7	34	56	90.00
Female	2	8	36	54	89.83
Male	5	5	32	59	90.24
White (Non-Hispanic)	1	7	28	63	91.18
African-American	8	8	46	38	84.62
Hispanic	Unreportable*				
Asian	8	8	25	58	83.33
Other	Unreportable*				
Title I					
Migrant					
Identified LEP	Unreportable*				
Extended Sch Services	5	19	62	14	76.19
Gifted/Talented	Unreportable*				
F/R Lunch Approved	4	15	44	37	81.48
Vocational/2 Credits					
Disability	Unreportable*				
Alternate Assessment	Unreportable*				
NCLB Accountable Students					
Total	3	6	33	58	90.72
Female	2	7	34	57	91.07
Male	5	5	32	59	90.24
White (Non-Hispanic)	2	6	27	65	92.42
African-American	8	8	42	42	83.33
Hispanic	Unreportable*				
Asian	8	8	25	58	83.33
Other	Unreportable*				
Title I					
Migrant					
Identified LEP	Unreportable*				
Extended Sch Services	5	20	60	15	75.00
Gifted/Talented	Unreportable*				
F/R Lunch Approved	4	15	42	38	80.77
Vocational/2 Credits					
Disability	Unreportable*				
Alternate Assessment	Unreportable*				

- Novice
- Apprentice
- Proficient
- Distinguished

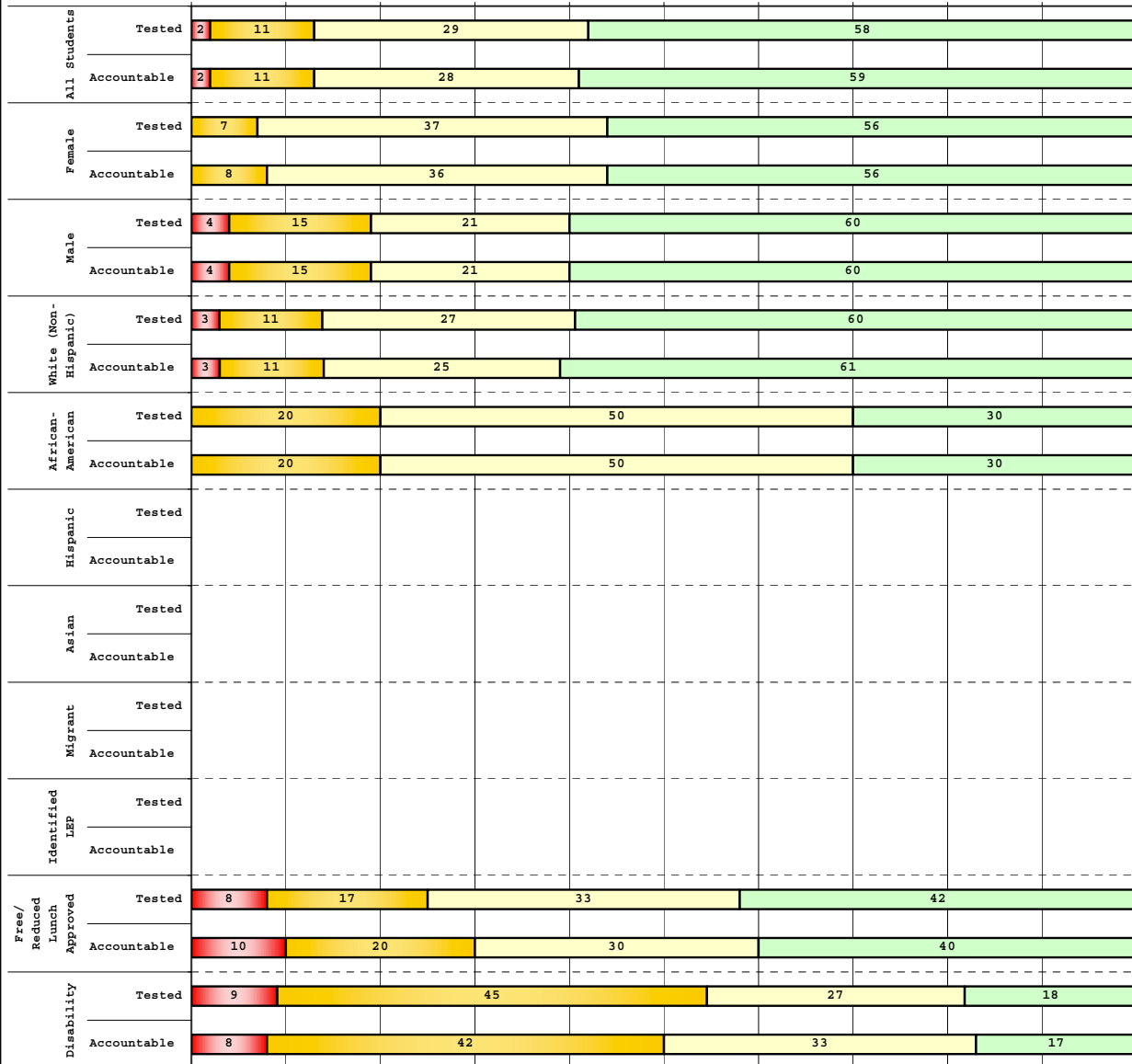
Percentage may not sum to 100% due to rounding. 'Unreportable*' indicates subpopulations with fewer than 10 students or subpopulations where all students score at the same performance level.



**2008-2009
INTERIM PERFORMANCE REPORT
MATHEMATICS DISAGGREGATION
Performance Level Percents**

School: Athens-Chilesburg Elementary
District: Fayette County
Code: 165045
Grade: 05

0% 10% 20% 30% 40% 50% 60% 70% 80% 90% 100%



	N%	A%	P%	D%	P+D%
Tested Students					
Total	2	11	29	58	86.81
Female	0	7	37	56	93.02
Male	4	15	21	60	81.25
White (Non-Hispanic)	3	11	27	60	86.67
African-American	0	20	50	30	80.00
Hispanic					
Asian	Unreportable*				
Other	Unreportable*				
Title I					
Migrant					
Identified LEP	Unreportable*				
Extended Sch Services	Unreportable*				
Gifted/Talented	0	6	6	88	94.12
F/R Lunch Approved	8	17	33	42	75.00
Vocational/2 Credits					
Disability	9	45	27	18	45.45
Alternate Assessment	Unreportable*				
NCLB Accountable Students					
Total	2	11	28	59	86.21
Female	0	8	36	56	92.31
Male	4	15	21	60	81.25
White (Non-Hispanic)	3	11	25	61	86.11
African-American	0	20	50	30	80.00
Hispanic					
Asian	Unreportable*				
Other	Unreportable*				
Title I					
Migrant					
Identified LEP	Unreportable*				
Extended Sch Services	Unreportable*				
Gifted/Talented	0	6	6	88	94.12
F/R Lunch Approved	10	20	30	40	70.00
Vocational/2 Credits					
Disability	8	42	33	17	50.00
Alternate Assessment	Unreportable*				

■ Novice
■ Apprentice
■ Proficient
■ Distinguished

Percentage may not sum to 100% due to rounding. 'Unreportable*' indicates subpopulations with fewer than 10 students or subpopulations where all students score at the same performance level.



2008-2009
INTERIM PERFORMANCE REPORT
MATHEMATICS CORE CONTENT

School: Athens-Chilesburg Elementary
 District: Fayette County
 Code: 165045
 Grade: 03

	No. Items	No. Observations	SCHOOL								STATE								School -State Mean
			Percents						Mean	Std. Err.	Percents						Mean		
			B	0	1	2	3	4					No. Observations	B	0	1		2	3
OPEN RESPONSE																			
1.x.x - Number Prop Oper	5	268	0	11	32	29	15	13	1.9	0.1	125,243	0	21	35	26	10	8	1.5	0.4
2.x.x - Measurement	1	19	5	0	0	37	21	37	2.8	0.3	8,325	0	25	5	30	14	25	2.1	0.7
3.x.x - Geometry	2	37	0	5	24	38	14	19	2.2	0.2	16,777	0	8	24	35	13	20	2.1	0.1
4.x.x - Data Analysis & Probabilit	1	107	0	6	12	12	24	46	2.9	0.1	50,106	0	9	13	19	27	32	2.6	0.3
5.x.x - Algebraic Thinking	2	123	0	5	13	11	29	41	2.9	0.1	58,404	0	9	14	19	28	31	2.6	0.3
MULTIPLE CHOICE																			
			Correct	Incorrect	Omit/Mult							Correct	Incorrect	Omit/Mult					
1.x.x - Number Prop Oper	32	1,733	86	14	0	0.86	0.01	810,106	74	26	0	0.74	0.12						
2.x.x - Measurement	7	391	88	12	0	0.88	0.02	183,647	81	18	0	0.81	0.07						
3.x.x - Geometry	18	856	91	9	0	0.91	0.01	400,848	85	15	0	0.85	0.06						
4.x.x - Data Analysis & Probabilit	8	412	81	19	0	0.81	0.02	192,126	69	31	0	0.69	0.12						
5.x.x - Algebraic Thinking	11	460	87	13	0	0.87	0.02	217,089	78	22	0	0.78	0.09						



2008-2009
INTERIM PERFORMANCE REPORT
MATHEMATICS CORE CONTENT

School: Athens-Chilesburg Elementary
 District: Fayette County
 Code: 165045
 Grade: 04

	No. Items	No. Observations	SCHOOL								STATE								School -State Mean
			Percents						Mean	Std. Err.	Percents						Mean		
			B	0	1	2	3	4					No. Observations	B	0	1		2	3
OPEN RESPONSE																			
1.x.x - Number Prop Oper	4	143	0	10	13	29	26	22	2.4	0.1	73,656	0	17	24	29	19	12	1.9	0.5
2.x.x - Measurement	1	13	0	23	8	8	38	23	2.3	0.4	8,195	0	43	13	10	20	13	1.5	0.8
3.x.x - Geometry	2	113	0	4	13	19	21	42	2.8	0.1	57,352	0	11	20	17	19	33	2.4	0.4
4.x.x - Data Analysis & Probabilit	1	18	0	6	17	33	44	0	2.2	0.2	8,152	0	5	36	29	23	6	1.9	0.3
5.x.x - Algebraic Thinking	2	110	0	2	14	34	33	18	2.5	0.1	57,508	0	5	27	32	25	11	2.1	0.4
MULTIPLE CHOICE																			
			Correct	Incorrect	Omit/Mult							Correct	Incorrect	Omit/Mult					
1.x.x - Number Prop Oper	31	1,290	78	23	0	0.78	0.01	664,194	67	33	0	0.67	0.11						
2.x.x - Measurement	7	270	75	25	0	0.75	0.03	139,170	62	38	0	0.62	0.13						
3.x.x - Geometry	14	553	87	13	0	0.87	0.02	278,460	77	23	0	0.77	0.10						
4.x.x - Data Analysis & Probabilit	12	584	85	15	0	0.85	0.02	303,394	71	29	0	0.71	0.14						
5.x.x - Algebraic Thinking	11	498	83	17	0	0.83	0.02	253,829	69	31	0	0.69	0.14						



2008-2009
INTERIM PERFORMANCE REPORT
MATHEMATICS CORE CONTENT

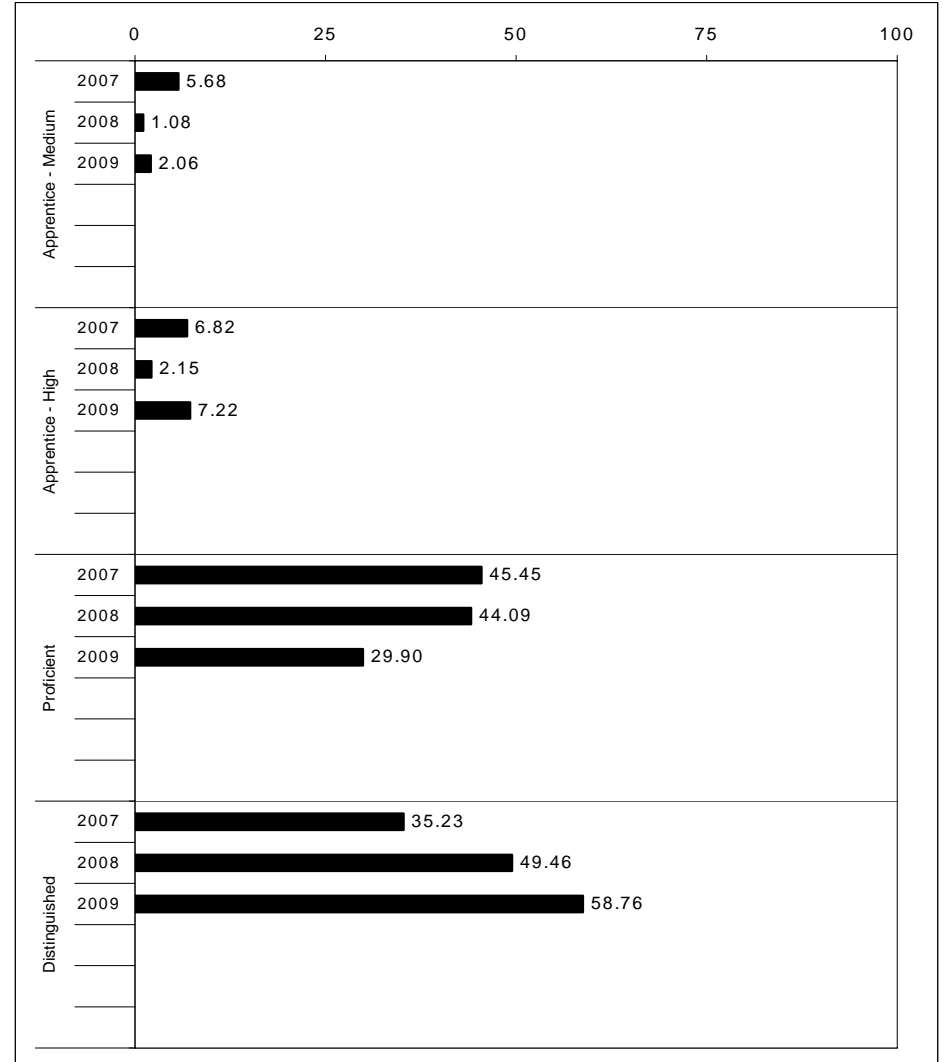
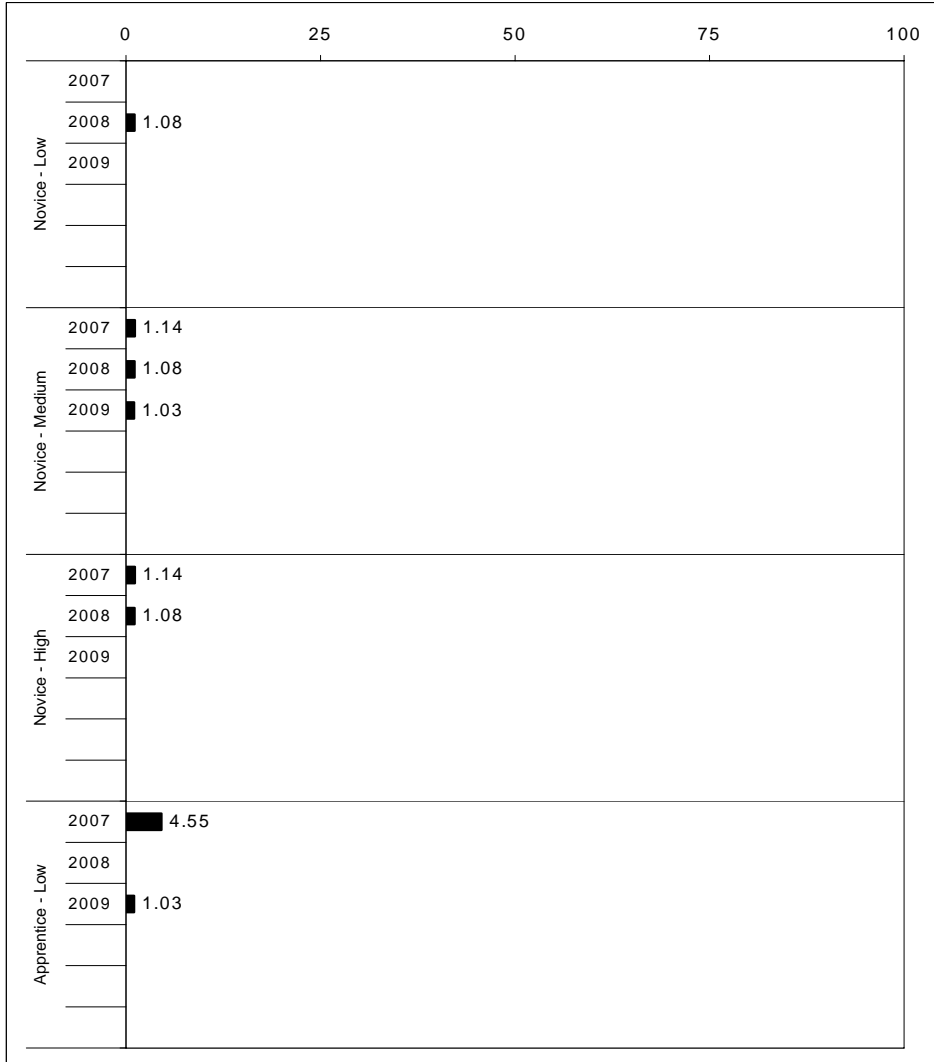
School: Athens-Chilesburg Elementary
 District: Fayette County
 Code: 165045
 Grade: 05

	No. Items	No. Observations	SCHOOL								STATE								School -State Mean
			Percents						Mean	Std. Err.	Percents						Mean		
			B	0	1	2	3	4					No. Observations	B	0	1		2	3
OPEN RESPONSE																			
1.x.x - Number Prop Oper	4	127	0	3	11	15	23	48	3.0	0.1	73,199	0	8	20	18	25	29	2.5	0.5
2.x.x - Measurement	1	13	0	15	23	8	38	15	2.2	0.4	8,380	0	37	30	13	10	11	1.3	0.9
3.x.x - Geometry	2	100	0	2	19	28	28	23	2.5	0.1	56,900	0	6	24	30	26	14	2.2	0.3
4.x.x - Data Analysis & Probabilit	1	85	0	12	9	16	16	46	2.8	0.2	48,828	0	15	18	15	17	35	2.4	0.4
5.x.x - Algebraic Thinking	1	15	0	0	13	13	13	60	3.2	0.4	8,005	0	13	15	20	17	35	2.5	0.7
MULTIPLE CHOICE																			
1.x.x - Number Prop Oper	29	1,118	Correct	Incorrect	Omit/Mult				0.78	0.01	643,144	Correct	Incorrect	Omit/Mult				0.63	0.15
2.x.x - Measurement	9	270	78	22	0				0.79	0.03	154,489	62	37	0				0.62	0.17
3.x.x - Geometry	14	482	79	20	0				0.87	0.02	276,516	78	22	0				0.78	0.09
4.x.x - Data Analysis & Probabilit	11	440	87	13	0				0.80	0.02	252,212	64	36	0				0.64	0.16
5.x.x - Algebraic Thinking	10	425	80	20	0				0.82	0.02	244,140	64	36	0				0.64	0.16
			82	18	0							65	35	0				0.65	0.17



2008-2009
INTERIM PERFORMANCE REPORT
SCIENCE TREND DATA
Performance Level Percents

School: Athens-Chilesburg Elementary
 District: Fayette County
 Code: 165045
 Grade: 04



The horizontal bar represents the percent of students scoring at a performance level within a particular year. Percentages may not sum to 100% due to rounding.



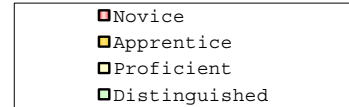
**2008-2009
INTERIM PERFORMANCE REPORT
SCIENCE DISAGGREGATION
Performance Level Percents**

School: Athens-Chilesburg Elementary
 District: Fayette County
 Code: 165045
 Grade: 04

		0%	10%	20%	30%	40%	50%	60%	70%	80%	90%	100%	N%	A%	P%	D%	P+D%	
All Students	Tested	1	10	31	58													
	100 Days	1	10	30	59													
Female	Tested		12	37	51													
	100 Days		13	36	52													
Male	Tested	2	7	22	68													
	100 Days	2	7	22	68													
White (Non-Hispanic)	Tested	1	4	25	69													
	100 Days	2	5	23	71													
African-American	Tested		23	54	23													
	100 Days		25	58	17													
Hispanic	Tested																	
	100 Days																	
Asian	Tested		25	25	50													
	100 Days		25	25	50													
Migrant	Tested																	
	100 Days																	
Identified LEP	Tested																	
	100 Days																	
Free/Reduced Lunch Approved	Tested		22	59	19													
	100 Days		23	58	19													
Disability	Tested																	
	100 Days																	

Tested Students		N%	A%	P%	D%	P+D%
Total		1	10	31	58	89.00
Female		0	12	37	51	88.14
Male		2	7	22	68	90.24
White (Non-Hispanic)		1	4	25	69	94.12
African-American		0	23	54	23	76.92
Hispanic	Unreportable*					
Asian		0	25	25	50	75.00
Other	Unreportable*					
Title I						
Migrant						
Identified LEP	Unreportable*					
Extended Sch Services		0	24	57	19	76.19
Gifted/Talented		0	0	8	92	100.00
F/R Lunch Approved		0	22	59	19	77.78
Vocational/2 Credits						
Disability	Unreportable*					
Alternate Assessment	Unreportable*					

100 Day Students		N%	A%	P%	D%	P+D%
Total		1	10	30	59	88.66
Female		0	13	36	52	87.50
Male		2	7	22	68	90.24
White (Non-Hispanic)		2	5	23	71	93.94
African-American		0	25	58	17	75.00
Hispanic	Unreportable*					
Asian		0	25	25	50	75.00
Other	Unreportable*					
Title I						
Migrant						
Identified LEP	Unreportable*					
Extended Sch Services		0	25	55	20	75.00
Gifted/Talented		0	0	8	92	100.00
F/R Lunch Approved		0	23	58	19	76.92
Vocational/2 Credits						
Disability	Unreportable*					
Alternate Assessment	Unreportable*					



Percentage may not sum to 100% due to rounding. 'Unreportable*' indicates subpopulations with fewer than 10 students or subpopulations where all students score at the same performance level.



2008-2009
INTERIM PERFORMANCE REPORT
SCIENCE CORE CONTENT

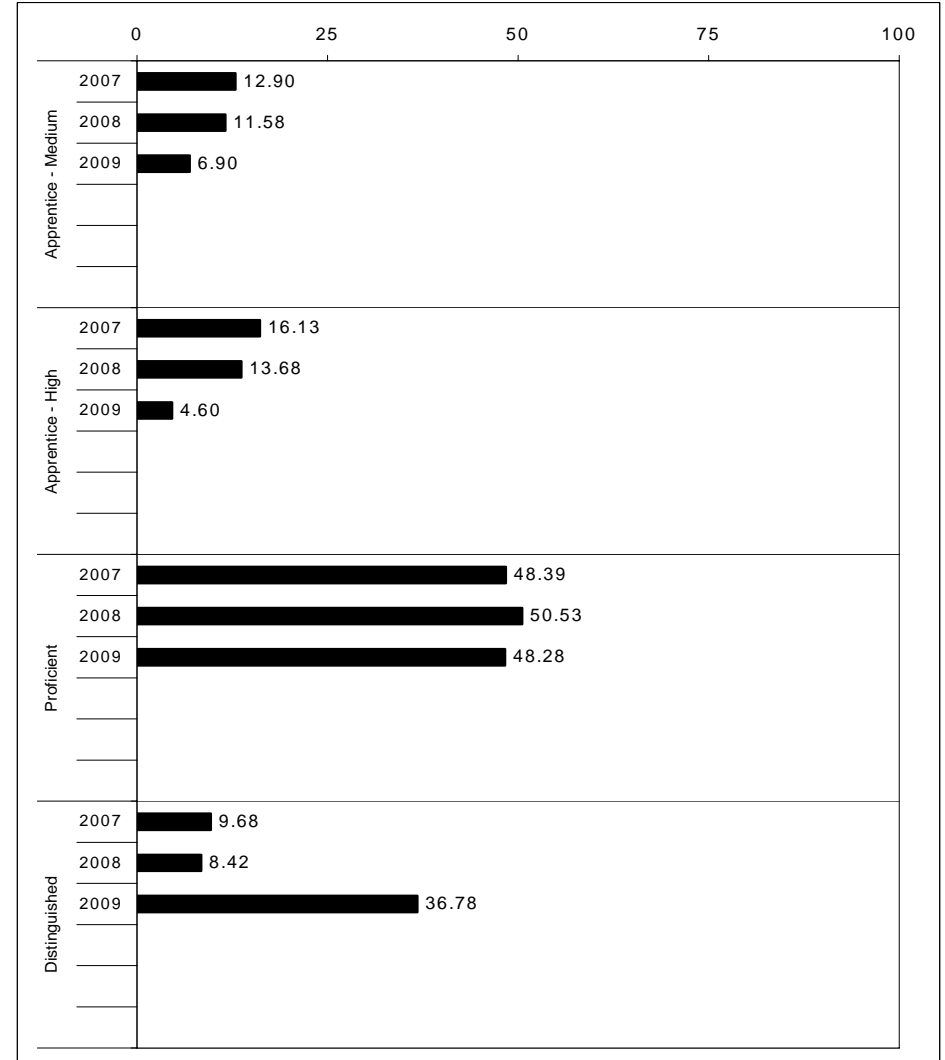
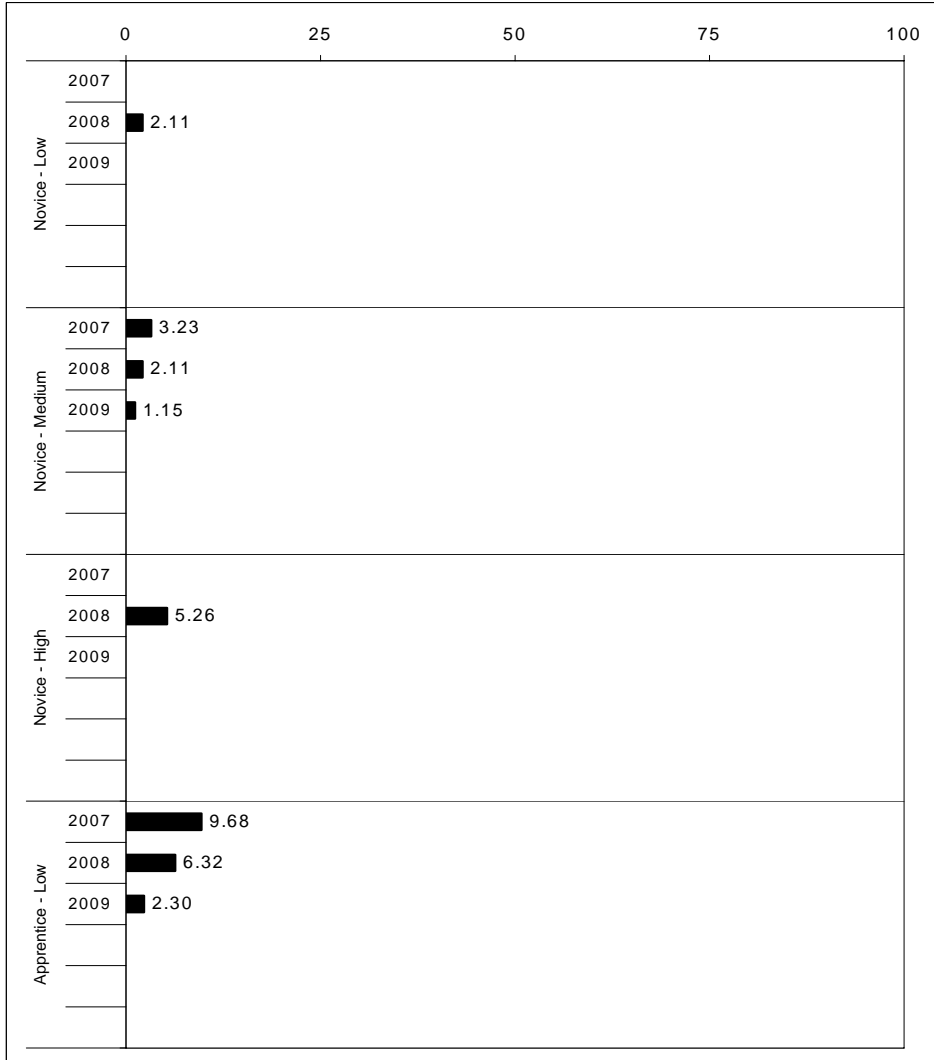
School: Athens-Chilesburg Elementary
 District: Fayette County
 Code: 165045
 Grade: 04

	No. Items	No. Observations	SCHOOL								STATE								School -State Mean
			Percents						Mean	Std. Err.	Percents						Mean		
			B	0	1	2	3	4					No. Observations	B	0	1		2	3
OPEN RESPONSE																			
1.x.x - Physical Science	2	35	0	9	14	40	26	11	2.2	0.2	16,337	0	17	19	42	17	5	1.7	0.5
2.x.x - Earth Space Science	3	125	0	6	11	37	40	6	2.3	0.1	65,658	0	12	22	35	26	4	1.9	0.4
3.x.x - Biological Science	3	128	0	1	6	17	55	20	2.9	0.1	65,506	0	2	11	33	44	9	2.5	0.4
4.x.x - Unifying Concepts	2	110	0	0	5	15	41	39	3.1	0.1	57,508	0	3	13	33	35	15	2.5	0.6
MULTIPLE CHOICE																			
			Correct	Incorrect	Omit/Mult							Correct	Incorrect	Omit/Mult					
1.x.x - Physical Science	18	768	89	11	0				0.89	0.01	393,336	82	18	0				0.81	0.08
2.x.x - Earth Space Science	19	786	77	23	0				0.77	0.02	401,488	71	29	0				0.71	0.06
3.x.x - Biological Science	22	912	90	10	0				0.90	0.01	467,138	78	22	0				0.78	0.12
4.x.x - Unifying Concepts	14	624	93	7	0				0.93	0.01	319,534	84	15	0				0.84	0.09



2008-2009
INTERIM PERFORMANCE REPORT
SOCIAL STUDIES TREND DATA
Performance Level Percents

School: Athens-Chilesburg Elementary
 District: Fayette County
 Code: 165045
 Grade: 05



The horizontal bar represents the percent of students scoring at a performance level within a particular year. Percentages may not sum to 100% due to rounding.



**2008-2009
INTERIM PERFORMANCE REPORT
SOCIAL STUDIES DISAGGREGATION
Performance Level Percents**

School: Athens-Chilesburg Elementary
District: Fayette County
Code: 165045
Grade: 05

		0%	10%	20%	30%	40%	50%	60%	70%	80%	90%	100%	N%	A%	P%	D%	P+D%	
All Students	Tested	1	13	49	36								Tested Students					
	100 Days	1	14	48	37								Total	1	13	49	36	85.71
Female	Tested	9	47	44								Female	0	9	47	44	90.70	
	100 Days	10	41	49								Male	2	17	52	29	81.25	
Male	Tested	2	17	52	29								White (Non-Hispanic)	1	13	43	43	85.33
	100 Days	2	17	54	27								African-American	0	20	70	10	80.00
White (Non-Hispanic)	Tested	1	13	43	43								Hispanic					
	100 Days	1	14	42	43								Asian	Unreportable*				
African-American	Tested	20	70	10								Other	Unreportable*					
	100 Days	20	70	10								Title I						
Hispanic	Tested												Migrant					
	100 Days												Identified LEP	Unreportable*				
Asian	Tested												Extended Sch Services	Unreportable*				
	100 Days												Gifted/Talented	0	3	29	68	97.06
Migrant	Tested												F/R Lunch Approved	8	33	50	8	58.33
	100 Days												Vocational/2 Credits					
Identified LEP	Tested												Disability	9	36	55	0	54.55
	100 Days												Alternate Assessment	Unreportable*				
Free/Reduced Lunch Approved	Tested	8	33	50	8								100 Day Students					
	100 Days	10	40	40	10								Total	1	14	48	37	85.06
Disability	Tested	9	36	55								Female	0	10	41	49	89.74	
	100 Days	8	33	58								Male	2	17	54	27	81.25	

■	Novice
■	Apprentice
■	Proficient
■	Distinguished

Percentage may not sum to 100% due to rounding. 'Unreportable*' indicates subpopulations with fewer than 10 students or subpopulations where all students score at the same performance level.



2008-2009
INTERIM PERFORMANCE REPORT
SOCIAL STUDIES CORE CONTENT

School: Athens-Chilesburg Elementary
 District: Fayette County
 Code: 165045
 Grade: 05

	No. Items	No. Observations	SCHOOL								STATE								School -State Mean
			Percents						Mean	Std. Err.	Percents						Mean		
			B	0	1	2	3	4					No. Observations	B	0	1		2	3
OPEN RESPONSE																			
1.x.x - Government & Civics	2	98	0	4	13	50	26	7	2.2	0.1	56,903	0	5	37	45	10	2	1.7	0.5
2.x.x - Cultures & Societies	1	16	0	0	13	63	19	6	2.2	0.2	8,151	0	4	21	56	15	4	1.9	0.3
3.x.x - Economics	1	85	0	8	31	36	21	4	1.8	0.1	48,828	0	11	33	41	12	3	1.6	0.2
4.x.x - Geography	2	30	0	0	27	33	30	10	2.2	0.2	16,077	0	9	32	39	17	3	1.7	0.5
5.x.x - Historical Perspective	3	111	0	4	22	57	15	3	1.9	0.1	65,353	0	7	35	46	10	2	1.7	0.2
MULTIPLE CHOICE																			
			Correct	Incorrect	Omit/Mult							Correct	Incorrect	Omit/Mult					
1.x.x - Government & Civics	14	554	77	24	0		0.77	0.02			317,571	66	34	0				0.66	0.11
2.x.x - Cultures & Societies	11	367	79	21	0		0.79	0.02			211,383	70	30	0				0.69	0.10
3.x.x - Economics	11	438	85	15	0		0.85	0.02			252,215	73	27	0				0.73	0.12
4.x.x - Geography	16	654	72	28	0		0.72	0.02			374,337	66	34	0				0.66	0.06
5.x.x - Historical Perspective	27	1,018	81	19	0		0.81	0.01			586,076	69	31	0				0.69	0.12



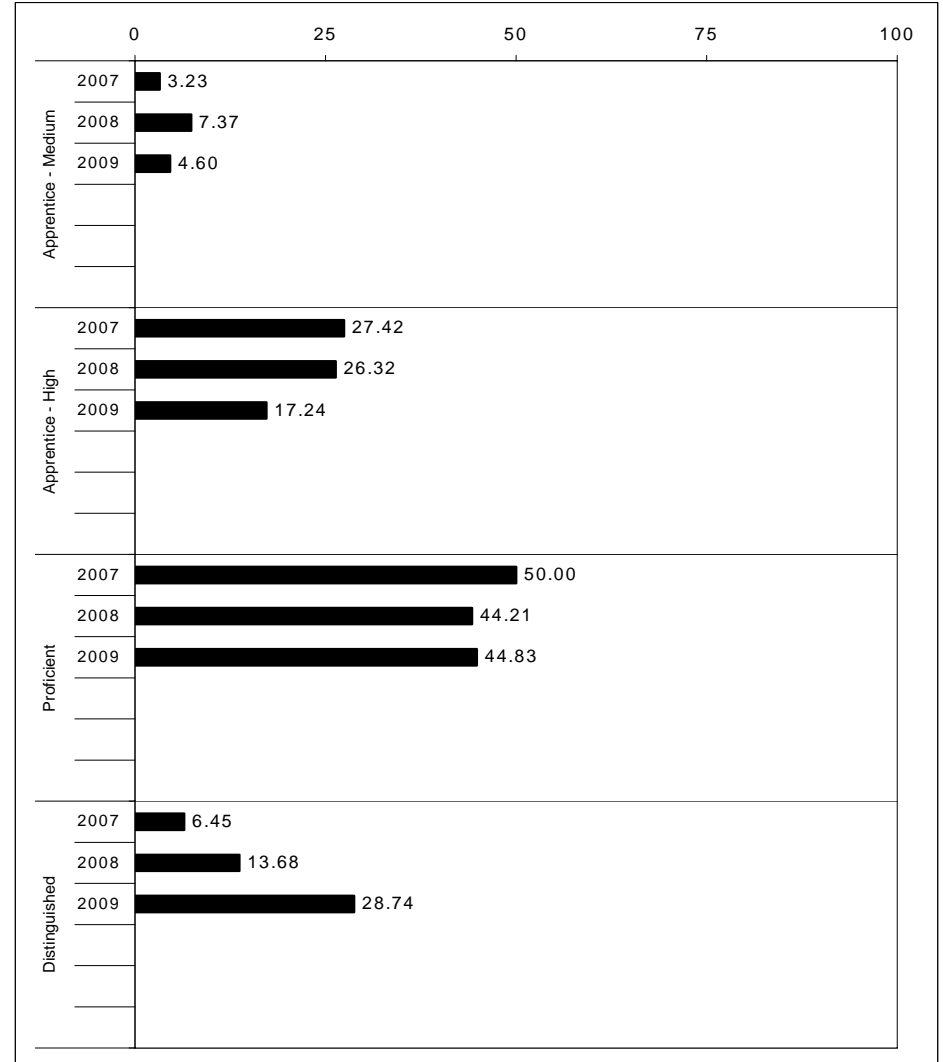
2008-2009
INTERIM PERFORMANCE REPORT
WRITING ON-DEMAND TREND DATA
Performance Level Percents

School: Athens-Chilesburg Elementary

District: Fayette County

Code: 165045

Grade: 05

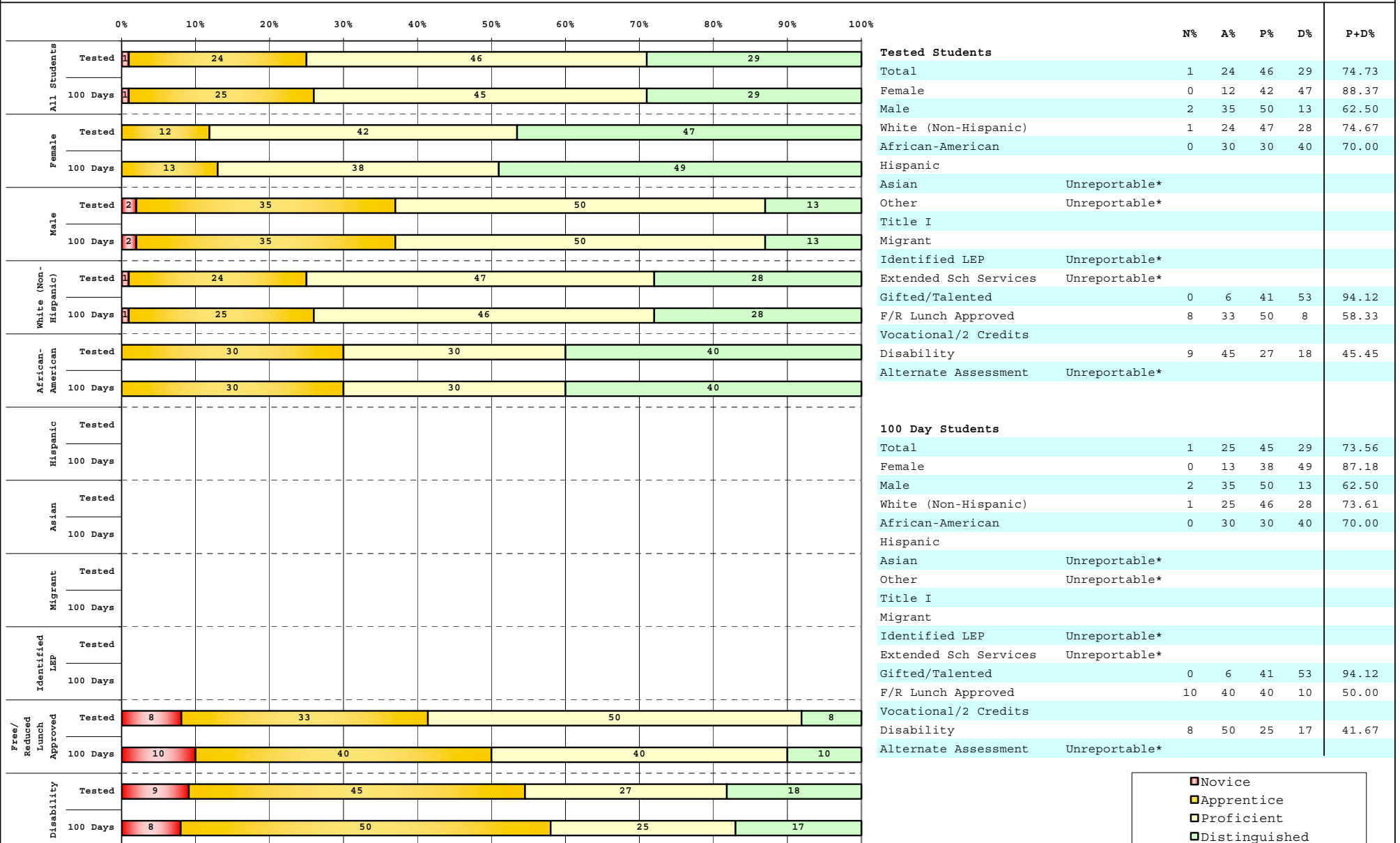


The horizontal bar represents the percent of students scoring at a performance level within a particular year. Percentages may not sum to 100% due to rounding.



2008-2009
INTERIM PERFORMANCE REPORT
WRITING ON-DEMAND DISAGGREGATION
Performance Level Percents

School: Athens-Chilesburg Elementary
 District: Fayette County
 Code: 165045
 Grade: 05



■	Novice
■	Apprentice
■	Proficient
■	Distinguished

Percentage may not sum to 100% due to rounding. 'Unreportable*' indicates subpopulations with fewer than 10 students or subpopulations where all students score at the same performance level.



2008-2009
INTERIM PERFORMANCE REPORT
WRITING ON-DEMAND CORE CONTENT

School: Athens-Chilesburg Elementary
 District: Fayette County
 Code: 165045
 Grade: 05

WRITING PROMPT	SCHOOL												STATE												School
	No. Observations	Percents											Mean	Percents											Mean
	B	0	1	2	3	4	5	6	7	8		B	0	1	2	3	4	5	6	7	8				
Inform																									
1.X.X - Content	28	0	0	0	11	7	25	25	18	4	11	4.86	0	1	1	9	9	34	18	21	4	2	4.43	0.43	
2.X.X - Structure	28	0	0	0	11	7	29	25	21	4	4	4.64	0	1	2	9	10	35	19	19	3	1	4.33	0.31	
3.X.X - Convention	28	0	0	0	11	7	25	25	25	4	4	4.71	0	0	0	12	11	34	19	19	3	1	4.38	0.33	
Narrate for a purpose																									
1.X.X - Content	28	0	0	0	7	4	18	25	36	0	11	5.21	0	1	1	10	9	36	18	21	3	1	4.35	0.86	
2.X.X - Structure	28	0	0	0	7	4	18	21	39	0	11	5.25	0	1	2	10	10	37	17	19	3	1	4.27	0.98	
3.X.X - Convention	28	0	0	0	11	0	18	21	39	0	11	5.21	0	0	0	12	10	36	18	19	3	1	4.33	0.88	
Persuade																									
1.X.X - Content	29	0	0	0	0	7	24	14	28	10	17	5.62	0	1	1	8	8	33	19	21	5	3	4.50	1.12	
2.X.X - Structure	29	0	0	0	0	7	28	21	17	14	14	5.45	0	2	2	9	10	33	19	20	5	2	4.42	1.03	
3.X.X - Convention	29	0	0	0	0	7	24	21	21	14	14	5.52	0	0	0	11	10	32	19	20	5	2	4.50	1.02	

MULTIPLE CHOICE	No. Items	SCHOOL						STATE						School
		No. Observations	Percents			Mean	Std. Err.	No. Observations	Percents			Mean	-State Mean	
			Correct	Incorrect	Omit/Mult			Correct	Incorrect	Omit/Mult				
4.x.x - Writing Process	52	1,020	81	19	0	0.81	0.01	585,936	73	27	0	0.73	0.08	
4.10.x - Revising	16	224	80	20	0	0.80	0.03	130,317	66	34	0	0.66	0.14	
4.11.x - Editing	36	796	81	19	0	0.81	0.02	455,619	75	24	0	0.75	0.06	